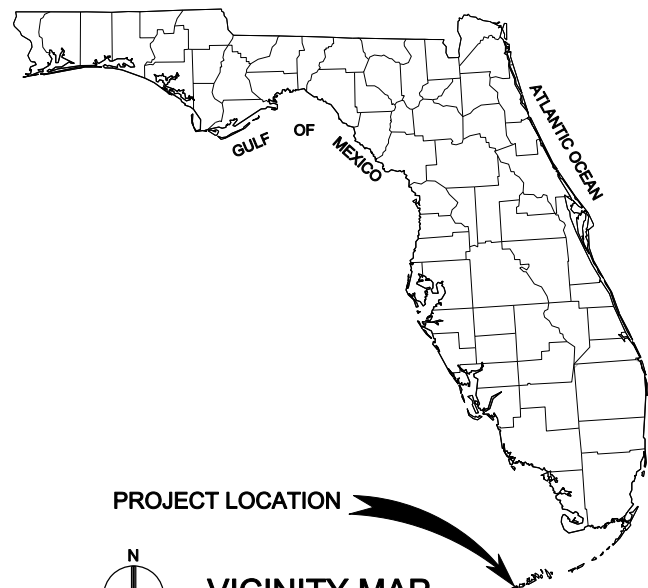


CONTRACT DOCUMENTS
FOR THE CONSTRUCTION OF THE
**PUMP STATION F
FORCE MAIN**
PREPARED FOR
CITY OF KEY WEST



VICINITY MAP



MAYOR: CRAIG CATES
COMMISSIONERS:

BARRY GIBSON
JIMMY WEEKLEY
BILLY WARDLOW

Drawings

MARK ROSSI
CLAYTON LOPEZ
TERI JOHNSTON

INDEX TO DRAWINGS

GENERAL

G-01 GENERAL NOTES, LEGEND AND ABBREVIATIONS

CIVIL

C-01 OVERALL SITE PLAN
C-02 PLAN AND PROFILE
C-03 PLAN AND PROFILE
C-04 PLAN AND PROFILE
C-05 PLAN AND PROFILE
C-06 PLAN AND PROFILE
C-07 PLAN AND PROFILE
C-08 DETAILS

SURVEY

1 OF 3 14TH STREET (GLYNN ARCHER DRIVE)
ABOVE GROUND UTILITY LOCATIONS & INVERTS
2 OF 3 14TH STREET (GLYNN ARCHER DRIVE)
ABOVE GROUND UTILITY LOCATIONS & INVERTS
3 OF 3 14TH STREET (GLYNN ARCHER DRIVE)
ABOVE GROUND UTILITY LOCATIONS & INVERTS

BID DOCUMENTS

For information regarding
this project, contact:

ANDREW SMYTH P.E.
6410 5th Street, Suite 2-A
Key West, FL 33040
305/294-1645

CH2MHILL

CH2M Hill Project No. 406518

AUGUST 2010

GENERAL SITE NOTES:

- SOURCE OF TOPOGRAPHY SHOWN ON THE CIVIL PLANS ARE BASE MAPS PROVIDED BY AVIROM & ASSOCIATES, INC, DATED 7/09/2010 (SEE SURVEY AT END OF PLAN SET). ADDITIONAL MAPPING HAS BEEN ADDED FROM AS-BUILT DATA AND SUPPLEMENT SURVEY FROM CH2M HILL, THE FLORIDA KEYS AQUEDUCT AUTHORITY, AND THE CITY OF KEY WEST. EXISTING CONDITIONS MAY VARY FROM THOSE SHOWN ON THESE PLANS. THE CONTRACTOR SHALL VERIFY EXISTING CONDITIONS AND ADJUST WORK PLAN ACCORDINGLY PRIOR TO BEGINNING CONSTRUCTION.
- EXISTING TOPOGRAPHY, STRUCTURES, AND SITE FEATURES ARE SHOWN SCREENED AND/OR LIGHT-LINED. NEW FINISH GRADE, STRUCTURES, AND SITE FEATURES ARE SHOWN HEAVY-LINED.
- HORIZONTAL DATUM: NORTH AMERICAN DATUM, 1983 (NAD 83). FLORIDA STATE PLANE COORDINATE SYSTEM.
- VERTICAL DATUM: NATIONAL GEODETIC VERTICAL DATUM, 1929 (NGVD 29).
- ALL UNITS ARE IN US SURVEY FEET.
- MAINTAIN, RELOCATE, OR REPLACE EXISTING SURVEY MONUMENTS, CONTROL POINTS, AND STAKES WHICH ARE DISTURBED OR DESTROYED. PERFORM THE WORK TO PRODUCE THE SAME LEVEL OF ACCURACY AS THE ORIGINAL MONUMENT(S) IN A TIMELY MANNER, AND AT THE CONTRACTOR'S EXPENSE.
- CONTRACTOR SHALL BE RESPONSIBLE FOR SECURING A STAGING AREA. CONTRACTOR TO PROVIDE WRITTEN RELEASE FROM PROPERTY OWNER.
- AT A MINIMUM, PROVIDE TEMPORARY FENCING AS NECESSARY TO MAINTAIN SECURITY AT ALL TIMES.
- ELEVATIONS GIVEN ARE TO FINISH GRADE AND PIPE INVERT UNLESS OTHERWISE SHOWN.
- ALL DISTURBED AREAS NOT RECEIVING A HARD SURFACE SHALL BE COVERED WITH GRASS.
- CONTRACTOR SHALL BE RESPONSIBLE FOR IMPLEMENTING AND MAINTAINING EROSION CONTROL DEVICES DURING CONSTRUCTION. EROSION CONTROL DEVICES SHOWN ARE THE MINIMUM REQUIRED.
- CONTRACTOR SHALL TAKE ALL OTHER MEASURES TO POSITIVELY PRECLUDE EROSION MATERIALS FROM LEAVING THE SITE. CONTRACTOR TO SUBMIT EROSION CONTROL PLAN.
- LIMIT CONSTRUCTION OPERATIONS TO WITHIN THE RIGHT-OF-WAY EASEMENTS AND ANY OTHER DESIGNATED WORK AREAS AS INDICATED. THE CONTRACTOR IS SOLELY RESPONSIBLE FOR ANY DAMAGES AS A RESULT OF CONSTRUCTION ACTIVITIES OUTSIDE OF RIGHT-OF-WAY. EASEMENTS AND ANY OTHER DESIGNATED WORK AREAS SHOWN ON THE DRAWINGS.
- CONTRACTOR SHALL COORDINATE ANY CLOSING OF DRIVEWAYS WITH THE PROPERTY OWNERS.
- CONTRACTOR SHALL REPLACE ALL SIDEWALKS, DRIVEWAYS, CURBING, MAILBOXES, PAVEMENTS, PAVEMENT MARKINGS, SIGNS, AND REFLECTIVE MARKERS DISTURBED OR REMOVED DURING CONSTRUCTION.
- TREE AND SHRUB REMOVAL AND/OR TRIMMING MUST BE COMPLETED BY A CITY APPROVED ISA CERTIFIED ARBORIST.

GENERAL PIPING AND UTILITIES NOTES:

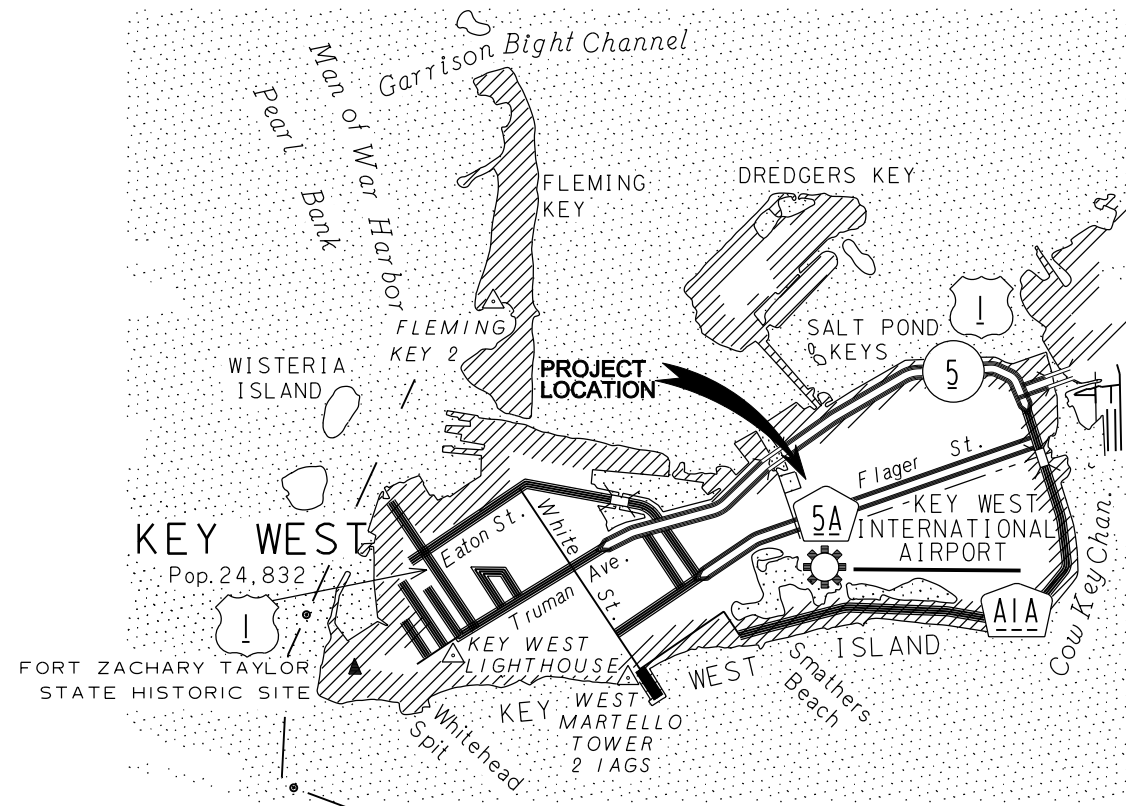
- EXISTING UNDERGROUND UTILITIES OBTAINED FROM AS-BUILTS AND FROM FIELD SURVEY AND HAS NOT BEEN FIELD VERIFIED FOR ACCURACY. CONTRACTOR SHALL FIELD VERIFY DEPTH AND LOCATION OF ALL UTILITIES PRIOR TO EXCAVATION. PROTECT ALL EXISTING UTILITIES DURING CONSTRUCTION.
- EXISTING PIPING AND EQUIPMENT ARE SHOWN SCREENED, LIGHT-LINED, OR NOTED AS EXISTING. NEW PIPING AND EQUIPMENT ARE SHOWN BOLD AND/OR HEAVY-LINED.
- UNLESS OTHERWISE SHOWN ALL PIPING SHALL HAVE A MINIMUM OF 36" COVER.
- ALL PIPES SHALL HAVE A CONSTANT SLOPE BETWEEN INVERT ELEVATIONS UNLESS A FITTING IS SHOWN.
- FOR TRENCHING AND BACKFILL, SEE §123-110 .
- FOR SURFACE RESTORATION OF ASPHALT CONCRETE, SEE §123-115 .
- MINIMUM ALLOWABLE CLEARANCE BETWEEN PIPES AT CROSSINGS SHALL BE 12".
- PIPELINE STATIONING AND LENGTHS OF PIPE INDICATED ARE BASED ON HORIZONTAL PROJECTION OF THE PIPE CENTERLINE.
- VERIFY THE ACTUAL LOCATION, ELEVATION AND CONDITION OF POINTS OF CONNECTION TO EXISTING FACILITIES AND PROVIDE NOTICE OF ANY DISCREPANCIES.
- SIZE OF FITTINGS SHOWN ON PLANS SHALL CORRESPOND TO ADJACENT STRAIGHT RUN OF PIPE, UNLESS OTHERWISE INDICATED. TYPE OF JOINT AND FITTING MATERIAL SHALL BE THE SAME AS SHOWN FOR ADJACENT STRAIGHT RUN OF PIPE.
- ALL JOINTS SHALL BE WATERTIGHT.
- ALL BURIED PIPING SPECIFIED TO BE PRESSURE TESTED, EXCEPT FLANGED, WELDED, OR SCREWED PIPING, SHALL BE PROVIDED WITH THRUST RESTRAINT, AS SPECIFIED AT ALL DIRECTIONAL CHANGES AND DEAD ENDS, UNLESS OTHERWISE NOTED.

LEGEND

	EXISTING WATER METER
	EXISTING TELEPHONE SERVICE BOX
	EXISTING ELECTRIC SERVICE BOX
	EXISTING CATCH BASIN
	EXISTING SIGN
	EXISTING BOLLARD
	EXISTING LIGHT POLE
	EXISTING CONCRETE UTILITY POLE
	EXISTING WOOD UTILITY POLE
	EXISTING DRAINAGE MANHOLE
	EXISTING TELEPHONE MANHOLE
	EXISTING SANITARY MANHOLE
	EXISTING SANITARY CLEANOUT
	EXISTING FIRE HYDRANT
	EXISTING VALVE
	EXISTING OVER HEAD ELECTRIC POWER
	EXISTING STORM SEWER
	EXISTING WATER LINE
	EXISTING SEWER LINE
	EXISTING CHAIN LINK FENCE
	EXISTING WOOD FENCE
	EXISTING RW LINE
	FUTURE STORM SEWER
	FUTURE IMPROVEMENTS
	TRENCHING LIMITS
	TEMPORARY CONSTRUCTION EASEMENT
	PROPOSED PIPE WITH STATIONING

ABBREVIATIONS

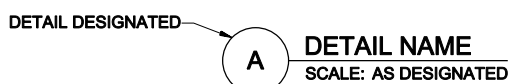
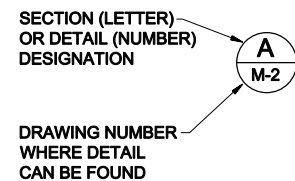
@	AT
CONC	CONCRETE
DI	DUCTILE IRON
DIA	DIAMETER
EA	EAST
ECC	ECCENTRIC
EL	ELEVATION
EX OR EXIST	EXISTING
EW	EACH WAY
HORIZ	HORIZONTAL
INV	INVERT
LT	LEFT
MAX	MAXIMUM
MH	MANHOLE
MJ	MECHANICAL JOINT
MIN	MINIMUM
N	NORTH
NO	NUMBER
NTS	NOT TO SCALE
OC	ON CENTER
OD	OUTSIDE DIAMETER
PL	PROPERTY LINE
PP	POWER POLE
PVC	POLYVINYLCHLORIDE
RCP	REINFORCED CONCRETE PIPE
RD	ROAD
REQD	REQUIRED
RJ	RESTRAINED JOINT
RT	RIGHT
R/W	RIGHT OF WAY
S	SOUTH
SPEC'D	SPECIFIED
SST	STAINLESS STEEL
STA	STATION
TYP	TYPICAL
VERT	VERTICAL
W	WEST, WEST
W/	WITH
WT	WEIGHT



LOCATION MAP
Copyright for this map is registered by the State of Florida, Department of Transportation

SECTION AND DETAIL IDENTIFICATION

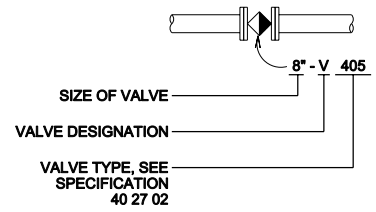
SECTION AND DETAIL DESIGNATORS



ON DRAWING WHERE DETAIL IS DRAWN:

VALVE DESIGNATIONS

MANUAL VALVES AND CHECK VALVES



Call 48 hours before you dig

It's the Law! 811

Sunshine State One Call of Florida, Inc.

NO.	DATE	DR	APVD	BY	APVD
DGSN			CHK	APVD	APVD
C CHILDRESS			A SMYTH	A MALONE	
A MALONE			A MALONE		

3011 S.W. WILLISTON ROAD
GAINESVILLE, FLORIDA 32608
E80000072 AAC001982

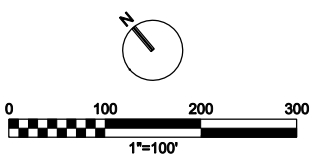
PUMP STATION F
FORCE MAIN
CITY OF KEY WEST
KEY WEST, FLORIDA

CH2MHILL

CIVIL

GENERAL NOTES, LEGEND AND ABBREVIATIONS

VERIFY SCALE	
BAR IS ONE INCH ON ORIGINAL DRAWING.	
DATE	AUGUST 2010
PROJ	406518
DWG	G-01
SHEET	



NO.	DATE	DR	CHK	REVISION	BY	APVD

3011 S.W. WILLISTON ROAD
 GAINESVILLE, FLORIDA 32608
 EB0000072 AAC001682

PUMP STATION F
 FORCE MAIN
 CITY OF KEY WEST
 KEY WEST, FLORIDA

CH2MHILL

CIVIL

OVERALL SITE PLAN

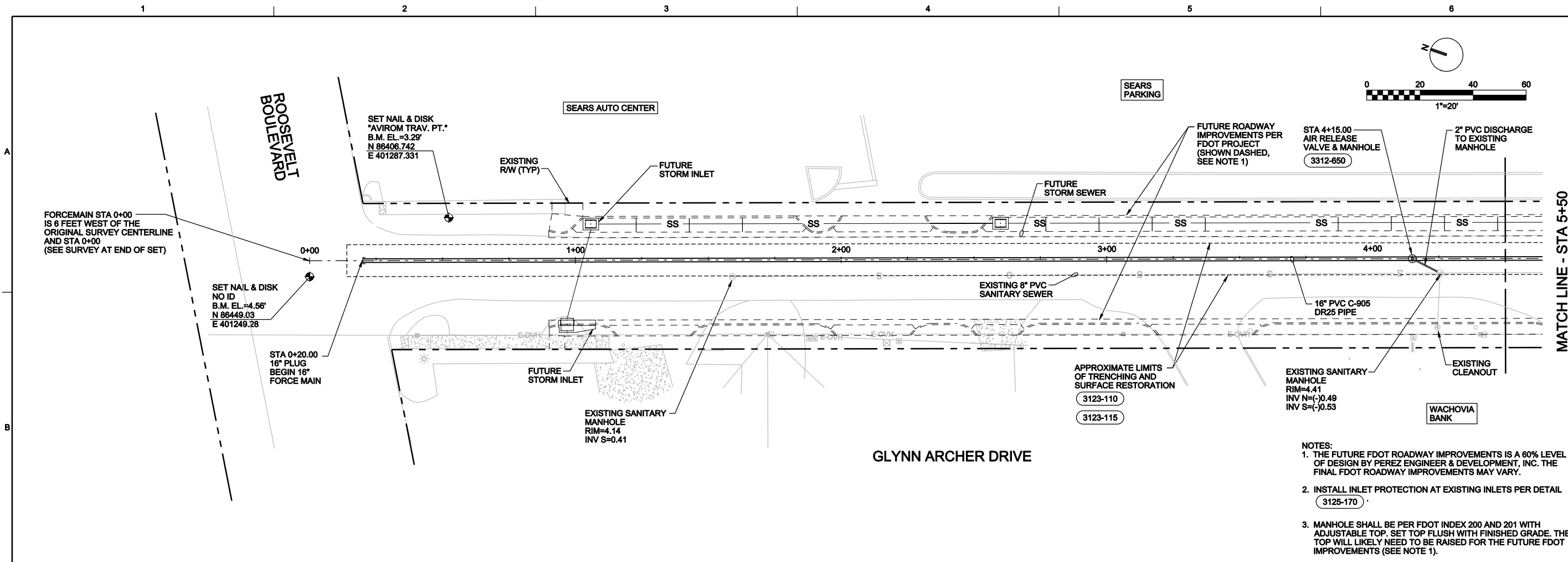
1" = 100'

VERIFY SCALE

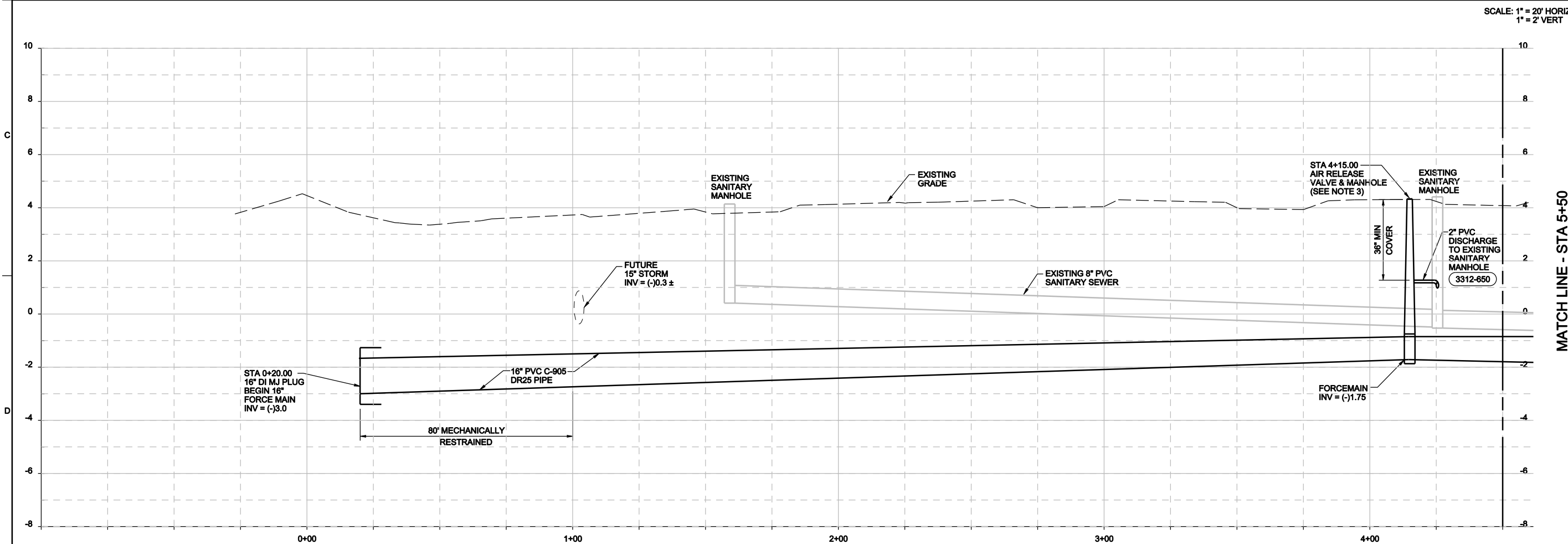
BAR IS ONE INCH ON ORIGINAL DRAWING.

DATE	AUGUST 2010
PROJ	406518
DWG	C-01
SHEET	

REUSE OF DOCUMENTS: THIS DOCUMENT, AND THE IDEAS AND DESIGNS INCORPORATED HEREIN, AS AN INSTRUMENT OF PROFESSIONAL SERVICE, IS THE PROPERTY OF CH2M HILL AND IS NOT TO BE USED, IN WHOLE OR IN PART, FOR ANY OTHER PROJECT WITHOUT THE WRITTEN AUTHORIZATION OF CH2M HILL. © CH2M HILL 2009. ALL RIGHTS RESERVED.



- NOTES:
1. THE FUTURE FDOT ROADWAY IMPROVEMENTS IS A 60% LEVEL OF DESIGN BY PEREZ ENGINEER & DEVELOPMENT, INC. THE FINAL FDOT ROADWAY IMPROVEMENTS MAY VARY.
 2. INSTALL INLET PROTECTION AT EXISTING INLETS PER DETAIL 3125-170.
 3. MANHOLE SHALL BE PER FDOT INDEX 200 AND 201 WITH ADJUSTABLE TOP. SET TOP FLUSH WITH FINISHED GRADE. THE TOP WILL LIKELY NEED TO BE RAISED FOR THE FUTURE FDOT IMPROVEMENTS (SEE NOTE 1).



NO.	DATE	DR	CHK	BY	APVD

3011 S.W. WILLISTON ROAD
 GAINESVILLE, FLORIDA 32608
 EB0000072 AAC001962

PUMP STATION F
 FORCE MAIN
 CITY OF KEY WEST
 KEY WEST, FLORIDA

CH2MHILL

CIVIL

PLAN AND PROFILE

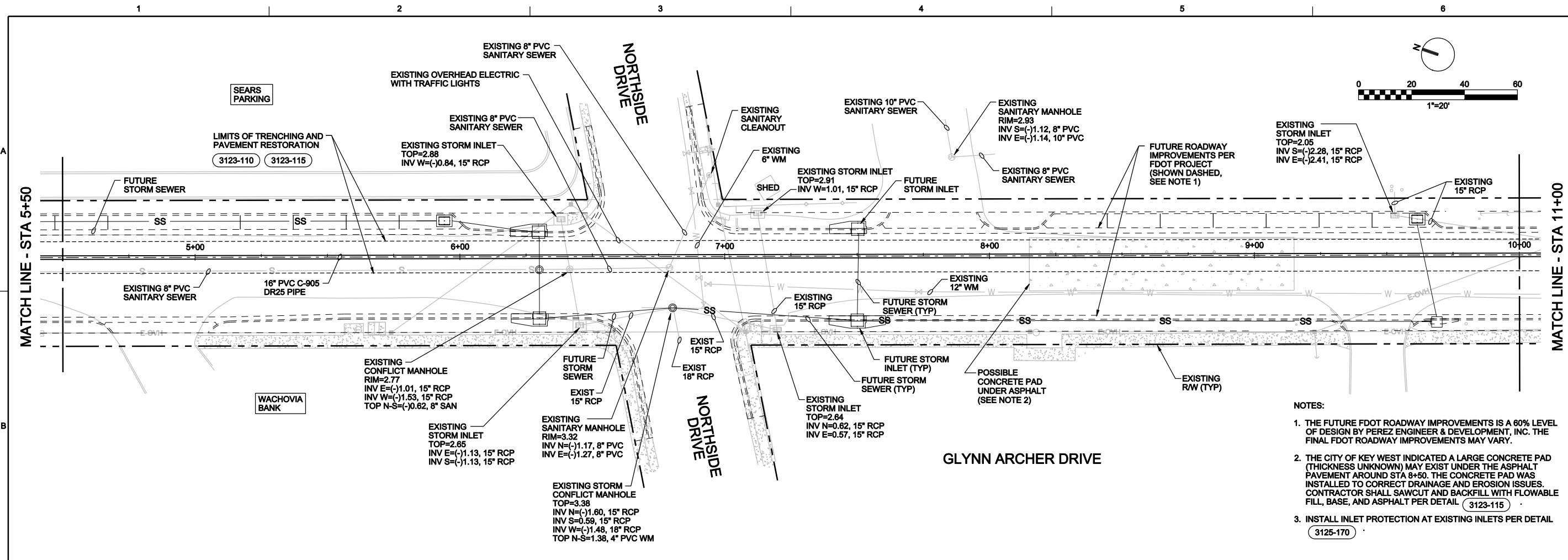
1" = 20'

VERIFY SCALE

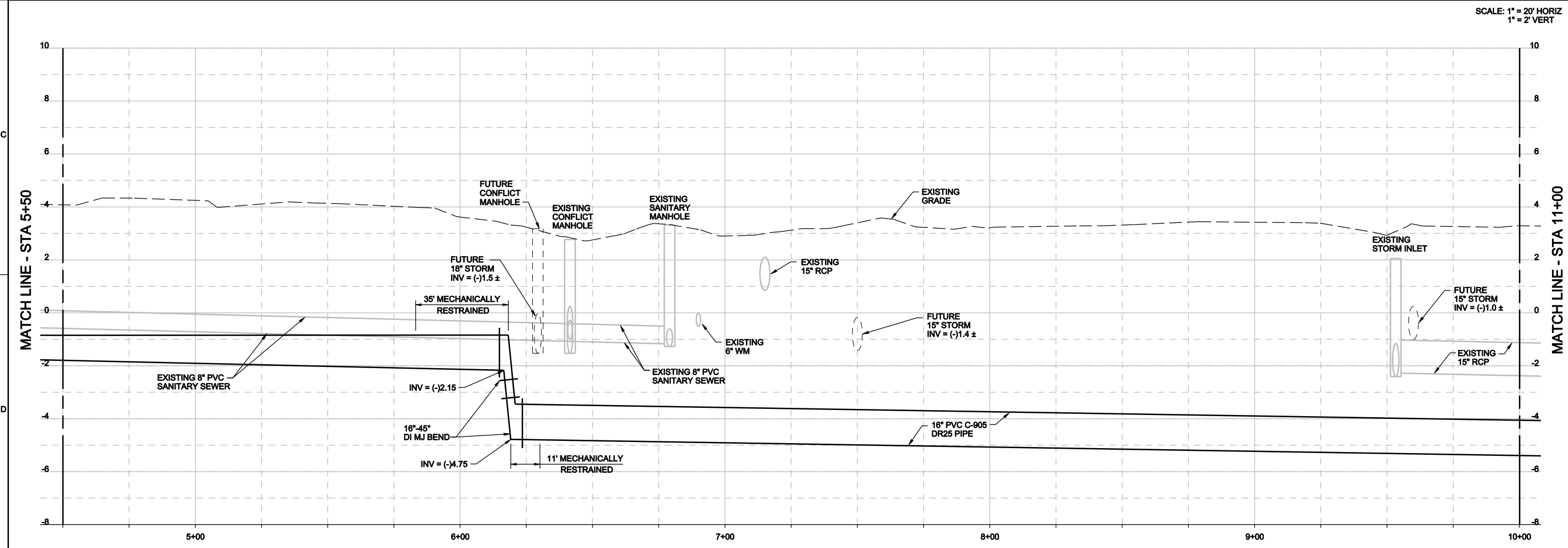
BAR IS ONE INCH ON ORIGINAL DRAWING.

DATE AUGUST 2010
 PROJ 406518
 DWG C-02
 SHEET

A MALONE A MALONE C CHILDRESS A SMYTH A MALONE
 REUSE OF DOCUMENTS: THIS DOCUMENT, AND THE IDEAS AND DESIGNS INCORPORATED HEREIN, AS AN INSTRUMENT OF PROFESSIONAL SERVICE, IS THE PROPERTY OF CH2M HILL AND IS NOT TO BE USED, IN WHOLE OR IN PART, FOR ANY OTHER PROJECT WITHOUT THE WRITTEN AUTHORIZATION OF CH2M HILL. © CH2M HILL 2009. ALL RIGHTS RESERVED.



- NOTES:
1. THE FUTURE FDOT ROADWAY IMPROVEMENTS IS A 60% LEVEL OF DESIGN BY PEREZ ENGINEER & DEVELOPMENT, INC. THE FINAL FDOT ROADWAY IMPROVEMENTS MAY VARY.
 2. THE CITY OF KEY WEST INDICATED A LARGE CONCRETE PAD (THICKNESS UNKNOWN) MAY EXIST UNDER THE ASPHALT PAVEMENT AROUND STA 8+50. THE CONCRETE PAD WAS INSTALLED TO CORRECT DRAINAGE AND EROSION ISSUES. CONTRACTOR SHALL SAWCUT AND BACKFILL WITH FLOWABLE FILL, BASE, AND ASPHALT PER DETAIL (3123-115)
 3. INSTALL INLET PROTECTION AT EXISTING INLETS PER DETAIL (3125-170)



NO.	DATE	DR	CHK	REVISION	BY	APVD

3011 S.W. WILLISTON ROAD
 GAINESVILLE, FLORIDA 32608
 EB0000072 AAC001662

PUMP STATION F
 FORCE MAIN
 CITY OF KEY WEST
 KEY WEST, FLORIDA

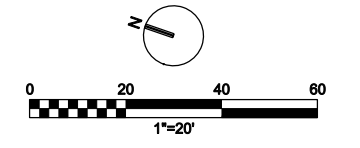
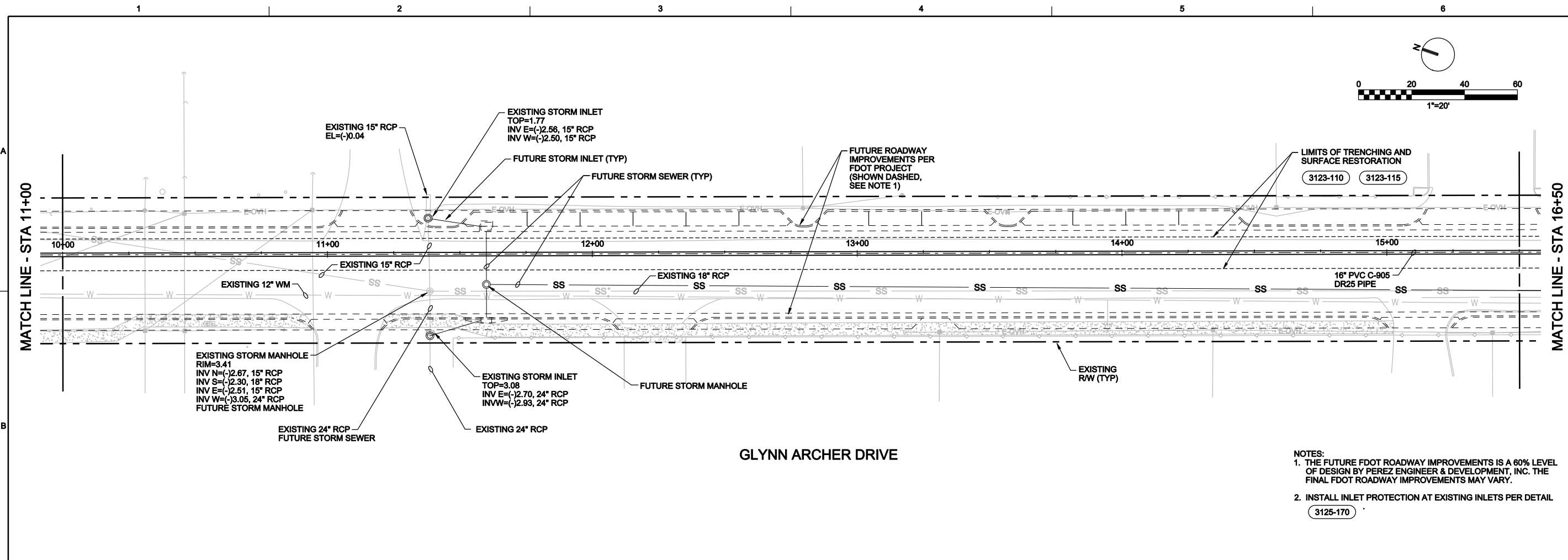
CH2MHILL

CIVIL

PLAN AND PROFILE

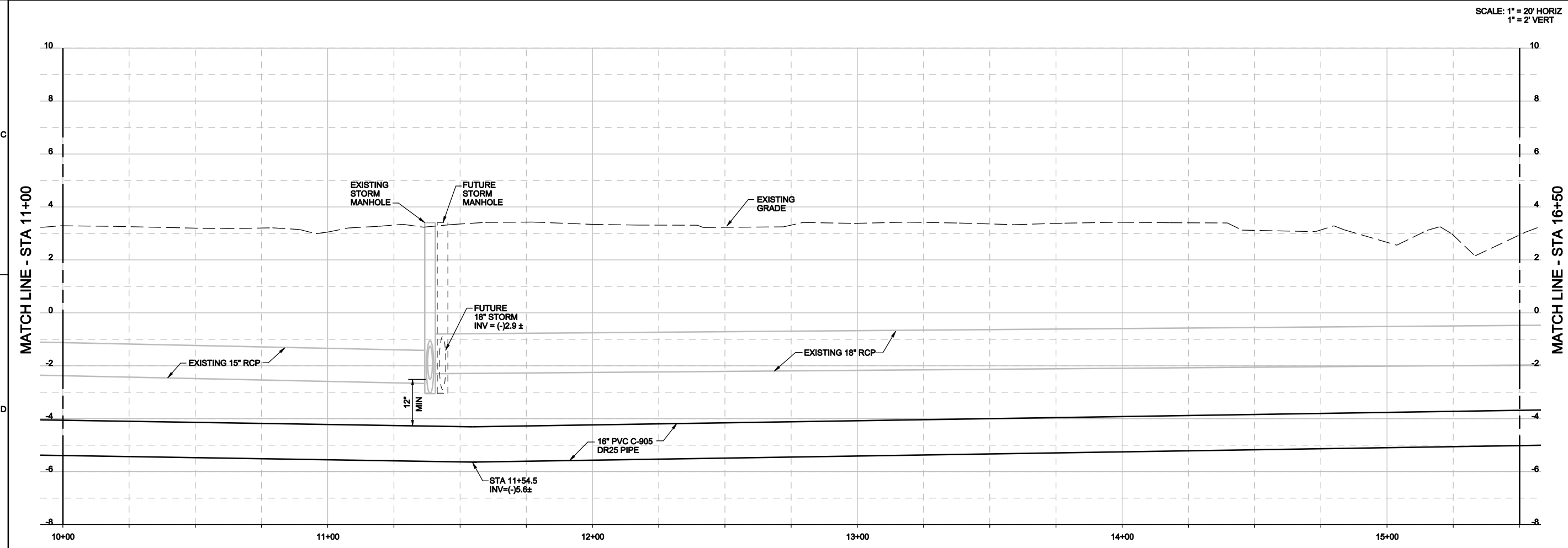
DATE	AUGUST 2010
PROJ	406518
DWG	C-03
SHEET	

REUSE OF DOCUMENTS: THIS DOCUMENT, AND THE IDEAS AND DESIGNS INCORPORATED HEREIN, AS AN INSTRUMENT OF PROFESSIONAL SERVICE, IS THE PROPERTY OF CH2M HILL AND IS NOT TO BE USED, IN WHOLE OR IN PART, FOR ANY OTHER PROJECT WITHOUT THE WRITTEN AUTHORIZATION OF CH2M HILL. © CH2M HILL 2009. ALL RIGHTS RESERVED.



GLYNN ARCHER DRIVE

- NOTES:**
1. THE FUTURE FDOT ROADWAY IMPROVEMENTS IS A 60% LEVEL OF DESIGN BY PEREZ ENGINEER & DEVELOPMENT, INC. THE FINAL FDOT ROADWAY IMPROVEMENTS MAY VARY.
 2. INSTALL INLET PROTECTION AT EXISTING INLETS PER DETAIL.



SCALE: 1" = 20' HORIZ
1" = 2' VERT

NO.	DATE	DR	REVISION	BY	APVD

3011 S.W. WILLISTON ROAD
GAINESVILLE, FLORIDA 32608
E80000072 AAC001982

PUMP STATION F
FORCE MAIN
CITY OF KEY WEST
KEY WEST, FLORIDA

CH2MHILL

CIVIL

PLAN AND PROFILE

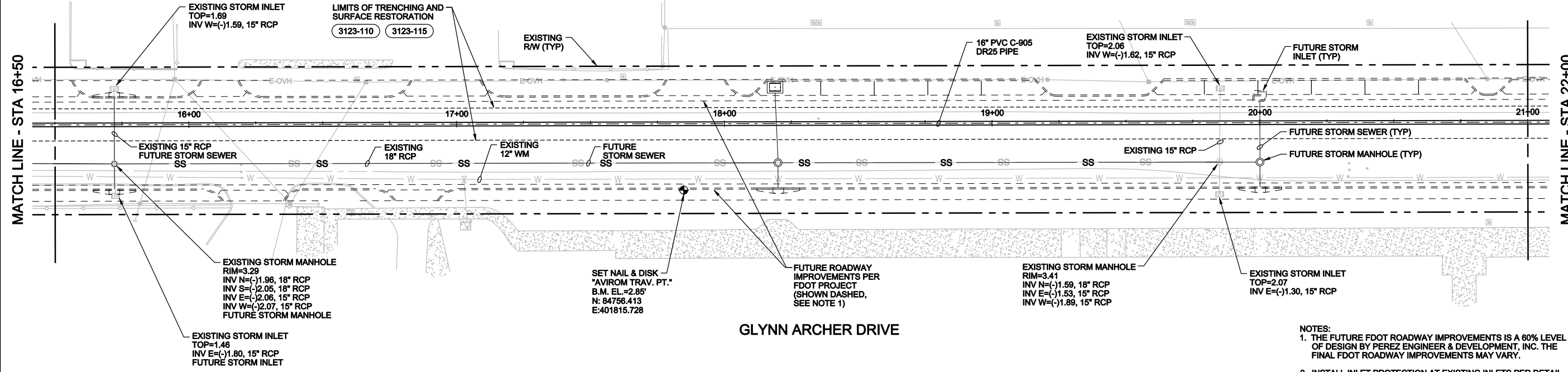
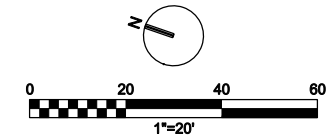
1" = 20'

VERIFY SCALE

BAR IS ONE INCH ON ORIGINAL DRAWING.

DATE	AUGUST 2010
PROJ	406518
DWG	C-04
SHEET	

REUSE OF DOCUMENTS: THIS DOCUMENT, AND THE IDEAS AND DESIGNS INCORPORATED HEREIN, AS AN INSTRUMENT OF PROFESSIONAL SERVICE, IS THE PROPERTY OF CH2M HILL AND IS NOT TO BE USED, IN WHOLE OR IN PART, FOR ANY OTHER PROJECT WITHOUT THE WRITTEN AUTHORIZATION OF CH2M HILL. © CH2M HILL 2009. ALL RIGHTS RESERVED.

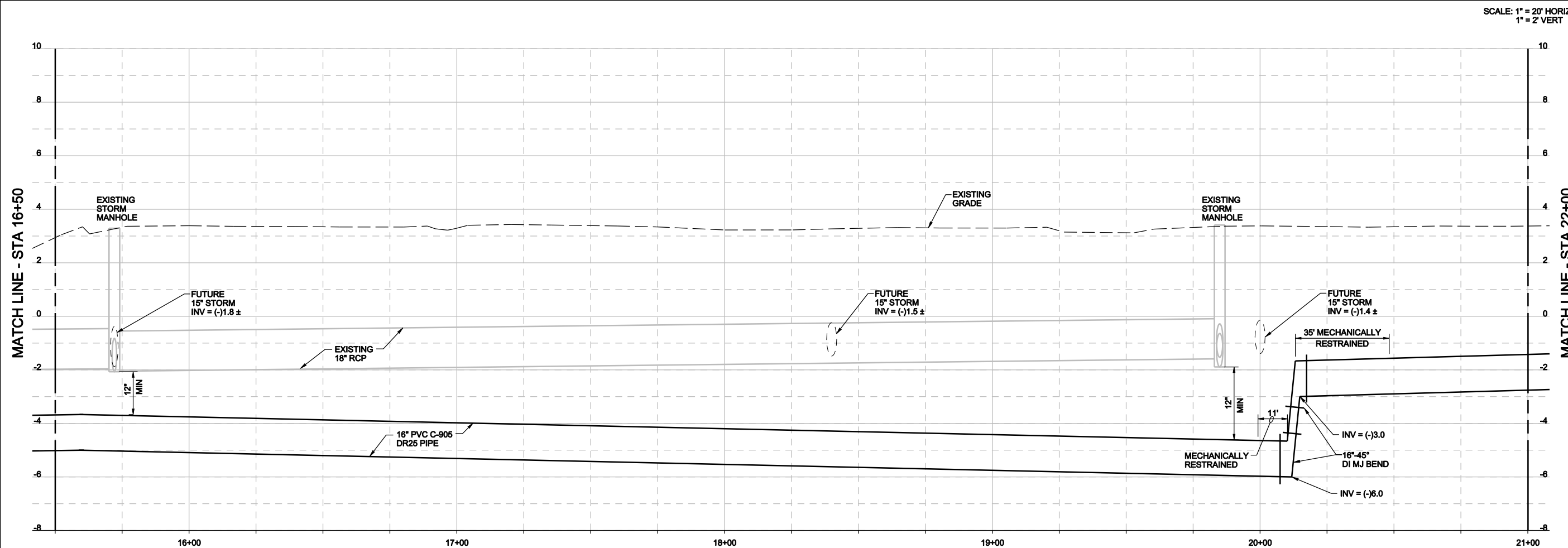


MATCH LINE - STA 16+50

MATCH LINE - STA 22+00

GLYNN ARCHER DRIVE

- NOTES:
1. THE FUTURE FDOT ROADWAY IMPROVEMENTS IS A 60% LEVEL OF DESIGN BY PEREZ ENGINEER & DEVELOPMENT, INC. THE FINAL FDOT ROADWAY IMPROVEMENTS MAY VARY.
 2. INSTALL INLET PROTECTION AT EXISTING INLETS PER DETAIL 3125-170



MATCH LINE - STA 16+50

MATCH LINE - STA 22+00

SCALE: 1" = 20' HORIZ
1" = 2' VERT

NO.	DATE	DR	REVISION	CHK	BY	APVD

3011 S.W. WILLISTON ROAD
GAINESVILLE, FLORIDA 32608
E8000072 AAC001692

PUMP STATION F
FORCE MAIN
CITY OF KEY WEST
KEY WEST, FLORIDA

CH2MHILL

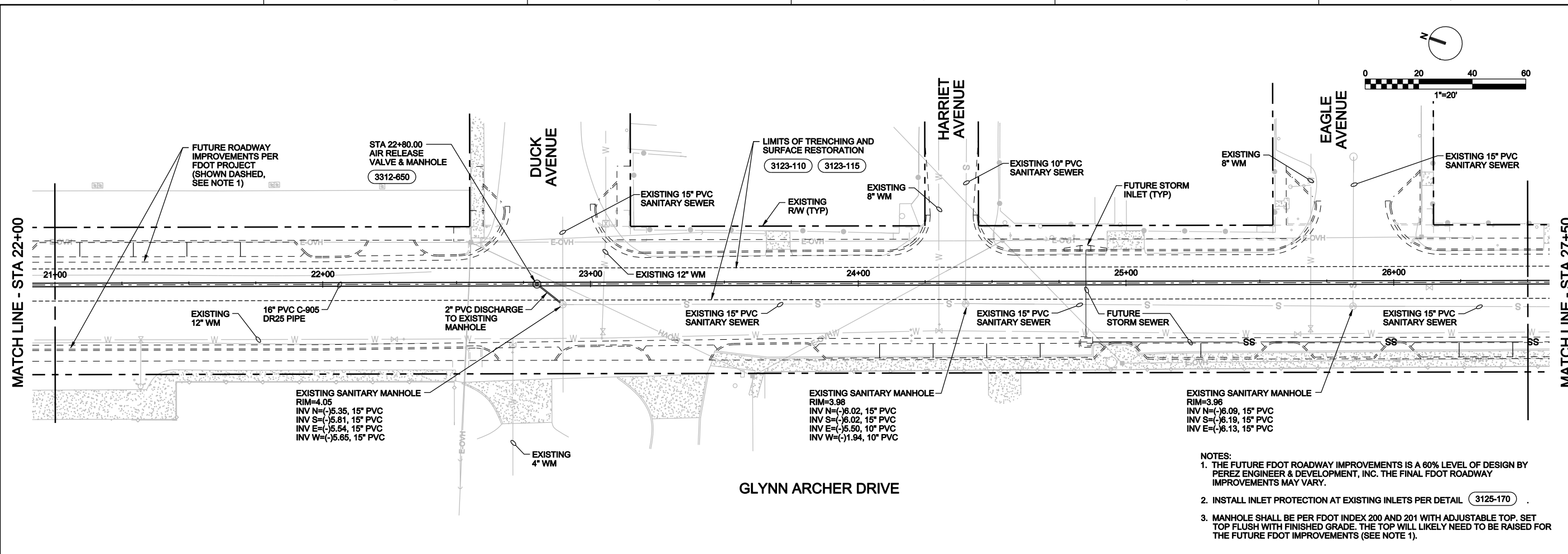
CIVIL

PLAN AND PROFILE

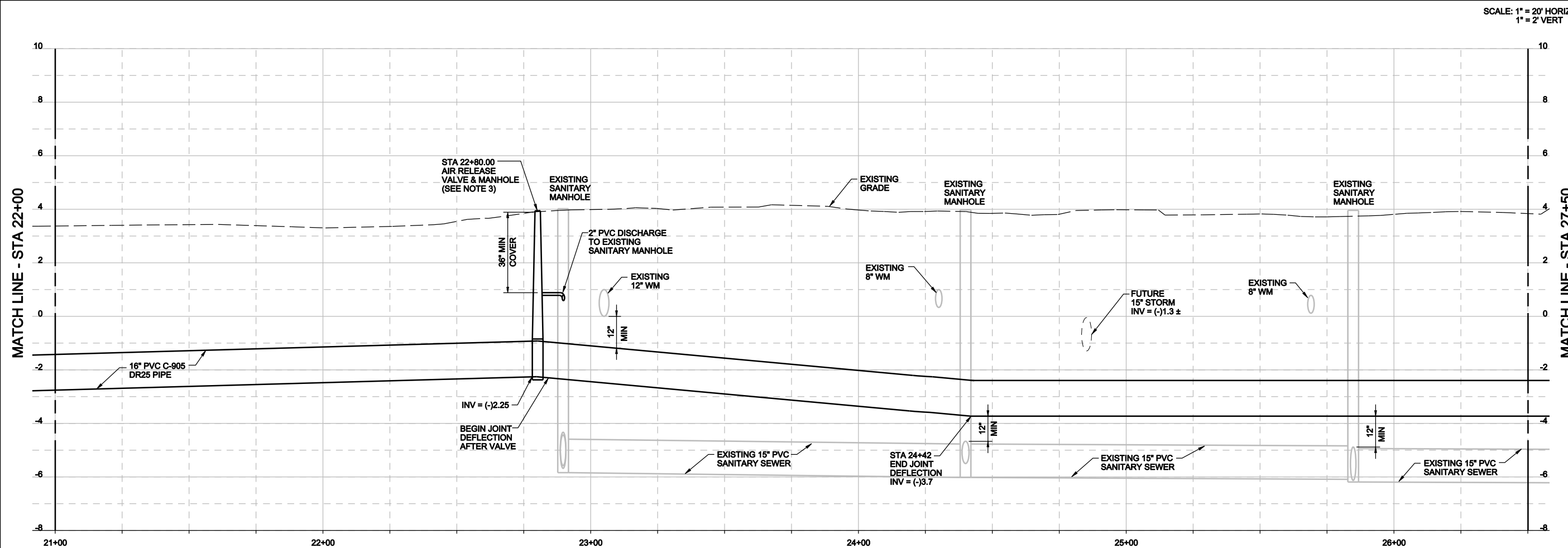
1" = 20'
VERIFY SCALE
BAR IS ONE INCH ON ORIGINAL DRAWING.

DATE	AUGUST 2010
PROJ	406518
DWG	C-05
SHEET	

REUSE OF DOCUMENTS: THIS DOCUMENT AND THE IDEAS AND DESIGNS INCORPORATED HEREIN, AS AN INSTRUMENT OF PROFESSIONAL SERVICE, IS THE PROPERTY OF CH2M HILL AND IS NOT TO BE USED, IN WHOLE OR IN PART, FOR ANY OTHER PROJECT WITHOUT THE WRITTEN AUTHORIZATION OF CH2M HILL. © CH2M HILL 2009. ALL RIGHTS RESERVED.



- NOTES:
1. THE FUTURE FDOT ROADWAY IMPROVEMENTS IS A 60% LEVEL OF DESIGN BY PEREZ ENGINEER & DEVELOPMENT, INC. THE FINAL FDOT ROADWAY IMPROVEMENTS MAY VARY.
 2. INSTALL INLET PROTECTION AT EXISTING INLETS PER DETAIL 3125-170.
 3. MANHOLE SHALL BE PER FDOT INDEX 200 AND 201 WITH ADJUSTABLE TOP. SET TOP FLUSH WITH FINISHED GRADE. THE TOP WILL LIKELY NEED TO BE RAISED FOR THE FUTURE FDOT IMPROVEMENTS (SEE NOTE 1).



SCALE: 1" = 20' HORIZ
1" = 2' VERT

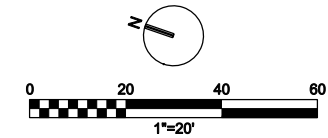
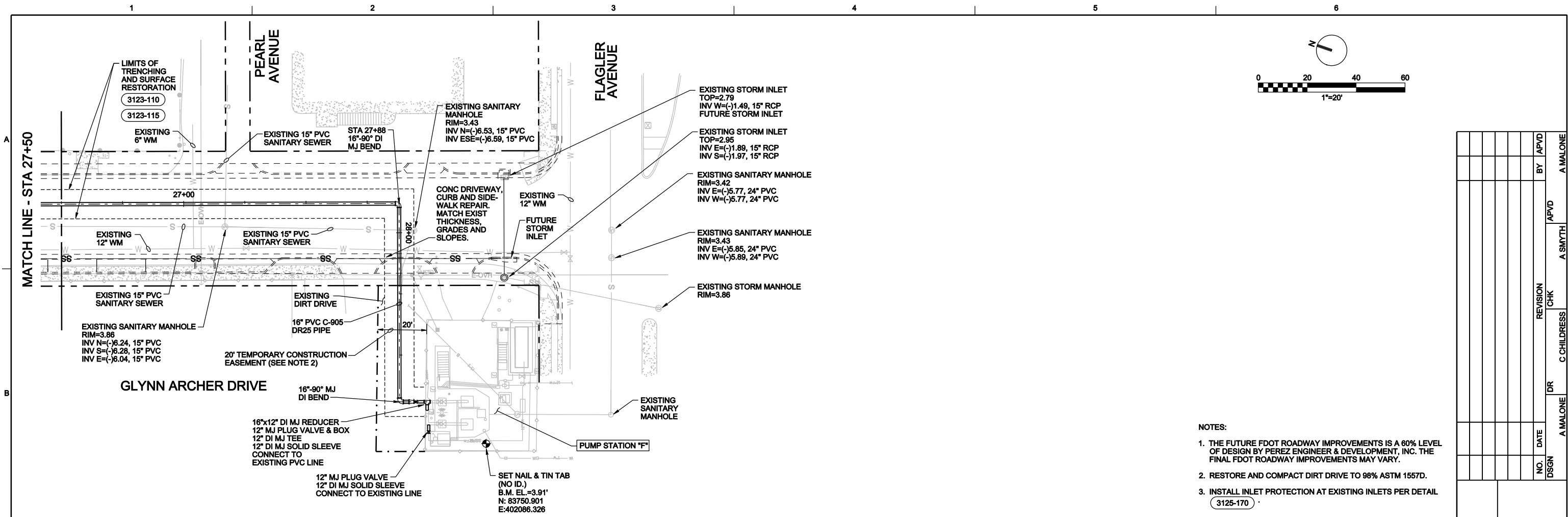
NO.	DATE	DR	REVISION	CHK	BY

PUMP STATION F
FORCE MAIN
CITY OF KEY WEST
KEY WEST, FLORIDA

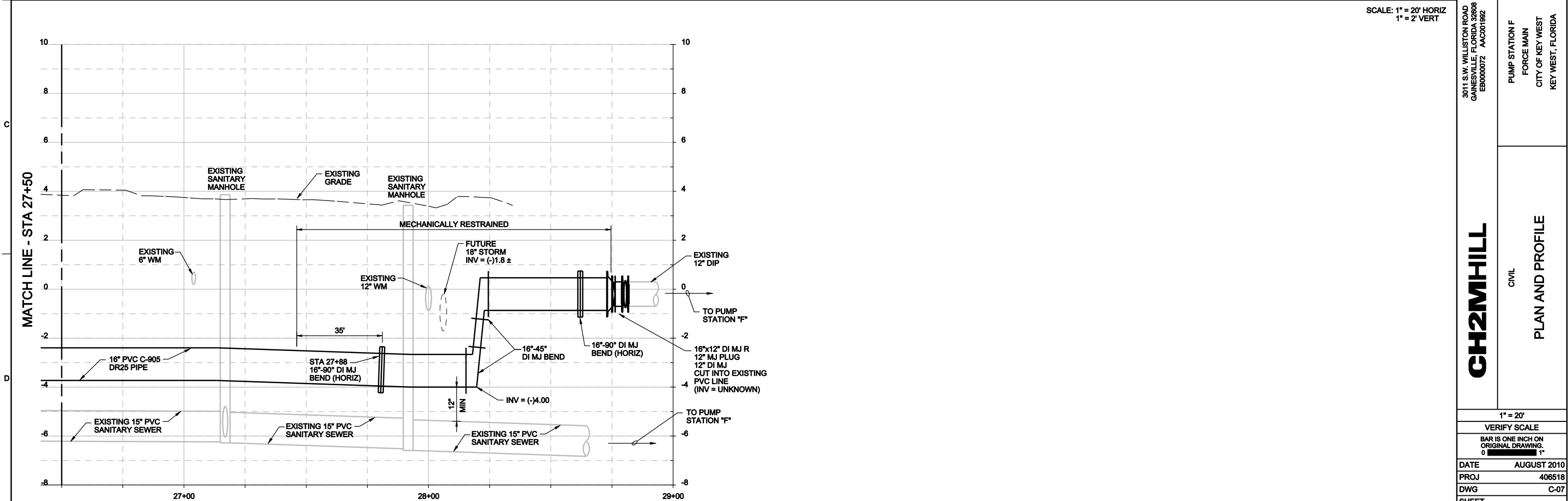
CH2MHILL
CIVIL
PLAN AND PROFILE

1" = 20'
VERIFY SCALE
BAR IS ONE INCH ON ORIGINAL DRAWING.

DATE	AUGUST 2010
PROJ	406518
DWG	C-06
SHEET	



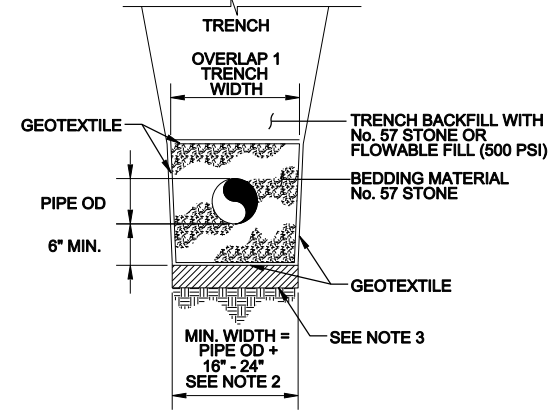
- NOTES:
1. THE FUTURE FDOT ROADWAY IMPROVEMENTS IS A 60% LEVEL OF DESIGN BY PEREZ ENGINEER & DEVELOPMENT, INC. THE FINAL FDOT ROADWAY IMPROVEMENTS MAY VARY.
 2. RESTORE AND COMPACT DIRT DRIVE TO 98% ASTM 1557D.
 3. INSTALL INLET PROTECTION AT EXISTING INLETS PER DETAIL (3125-170)



SCALE: 1" = 20' HORIZ
1" = 2' VERT

3123-110		3123-115		3125-170	
NO.	DATE	DR	CHK	REVISION	BY
A MALONE			A MALONE		
C CHILDRESS			A SMYTH		
A MALONE			A MALONE		
3011 S.W. WILLISTON ROAD GAINESVILLE, FLORIDA 32608 E80000072 AAC001662					
PUMP STATION F FORCE MAIN CITY OF KEY WEST KEY WEST, FLORIDA					
CH2MHILL					
CIVIL					
PLAN AND PROFILE					
1" = 20'					
VERIFY SCALE					
BAR IS ONE INCH ON ORIGINAL DRAWING.					
DATE	AUGUST 2010				
PROJ	406518				
DWG	C-07				
SHEET					

REUSE OF DOCUMENTS: THIS DOCUMENT AND THE IDEAS AND DESIGNS INCORPORATED HEREIN AS AN INSTRUMENT OF PROFESSIONAL SERVICE IS THE PROPERTY OF CH2M HILL AND IS NOT TO BE USED, IN WHOLE OR IN PART, FOR ANY OTHER PROJECT WITHOUT THE WRITTEN AUTHORIZATION OF CH2M HILL. © CH2M HILL 2009. ALL RIGHTS RESERVED.

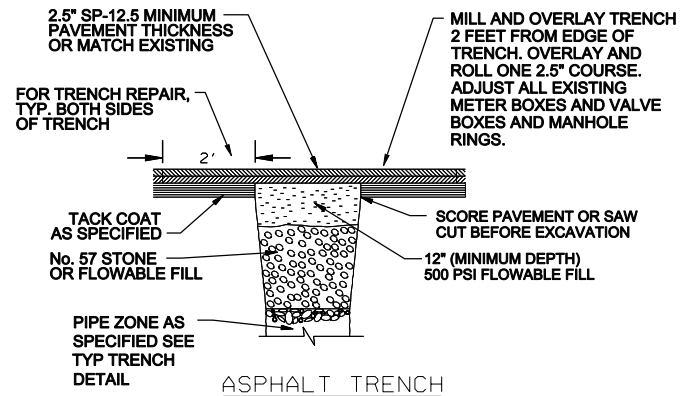


- NOTES:**
1. GEOTEXTILE MATERIAL SHALL BE PLACED AROUND BEDDING MATERIAL.
 2. IF MUCK IS ENCOUNTERED IN TRENCH BED OVEREXCAVATE AND BACKFILL WITH A MINIMUM OF 2 FEET OF No. 57 ROCK OR FLOWABLE FILL (500 PSI).

TYPICAL TRENCH

NTS

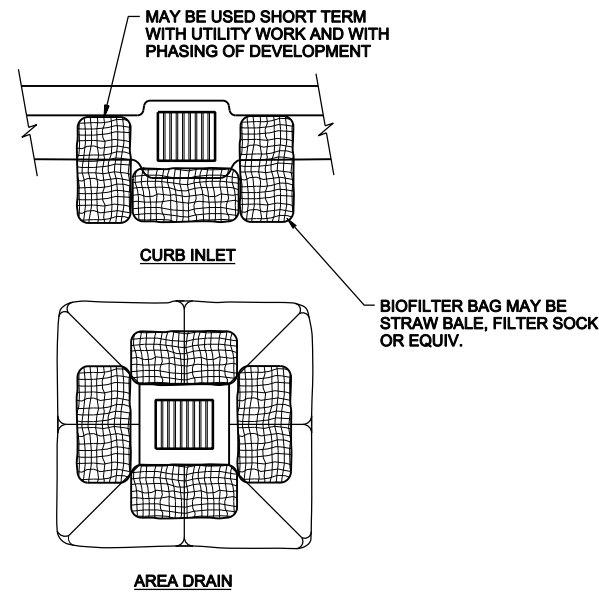
3123-110



ASPHALT SURFACE REPAIR FOR TRENCH

NTS

3123-115

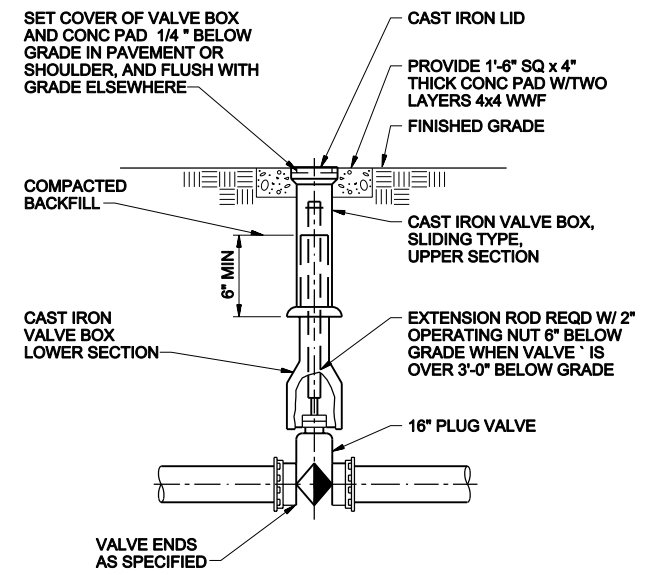


- NOTES:**
1. CONTRACTOR SHALL INSTALL BIOFILTER BAGS AROUND INLETS IF AREA IS DISTURBED. CONTRACTOR SHALL REMOVE BIOFILTER BAG AFTER THE AREA IS PAVED AND STABILIZED.

INLET PROTECTION

NTS

3125-170



BURIED PLUG VALVE BOX

NTS

4027-640

SEWAGE AIR RELEASE VALVE

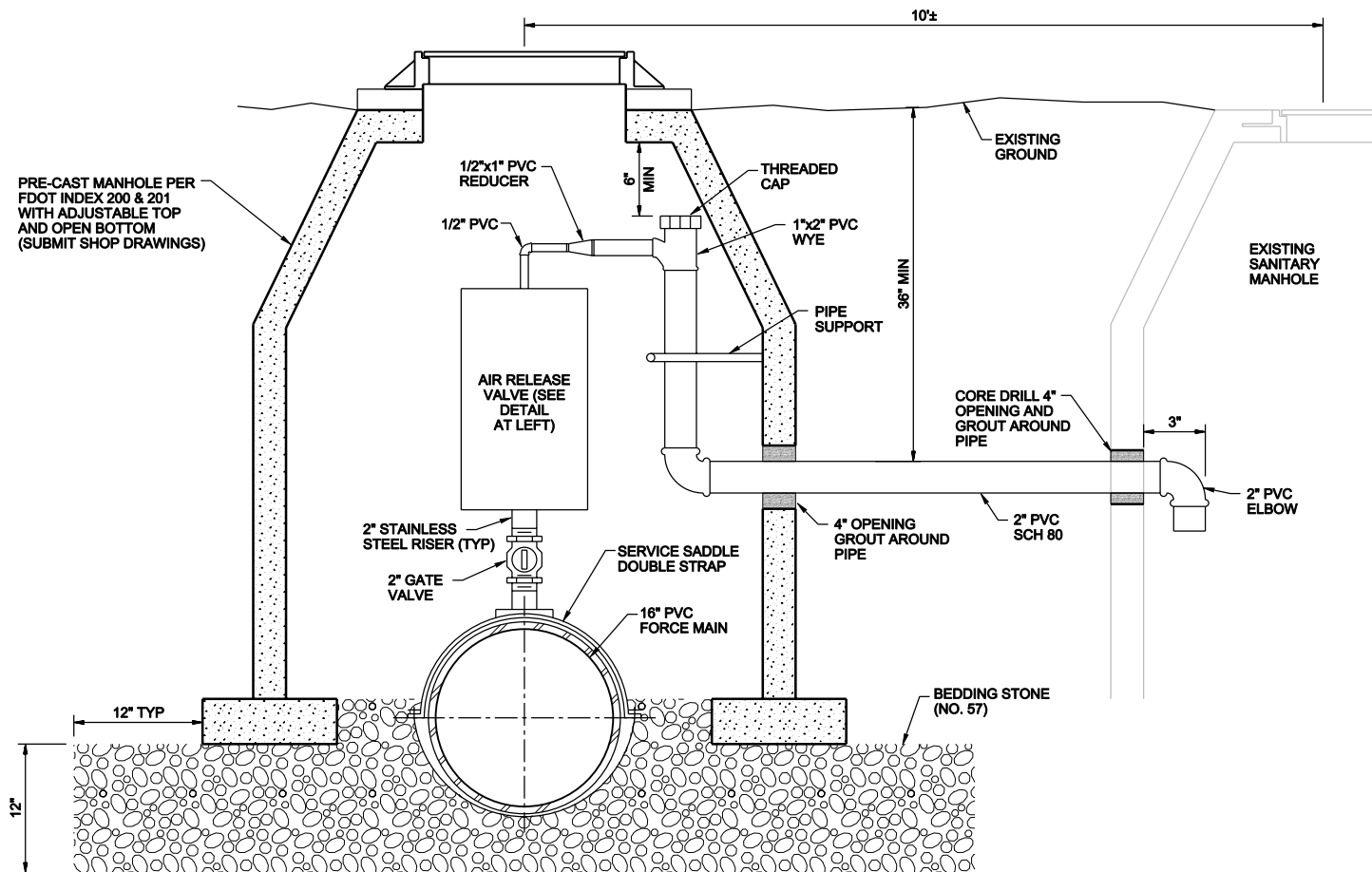
INLET-ORIFICE SELECTION CHART				
OPERATING PRESSURE PSI	ORIFICE DIA	INLET SIZE		
		2NPT	3NPT	4NPT
0-50	5/16			
51-150	1/4	STD		
151-300	5/32			

DET.	DESCRIPTION	MATERIAL
1	BODY	CAST IRON ASTM A126 GR.B
2	COVER	CAST IRON ASTM A126 GR.B
3	COVER GASKET	LEXIDE (non-asbestos)
4	COVER BOLT	STEEL ASTM A307 GR.B
5	LEVERAGE FRAME	STAINLESS STEEL ASTM 351 CF-8M
6	SEAT (3/8 orifice only)	STAINLESS STEEL ASTM A276 T316
7	NEEDLE	BUNA-N
9	NEEDLE LEVER	STAINLESS STEEL ASTM A351 CF-8M
10	LEVER PIN	STAINLESS STEEL A581 T303
11	RETAINING RING	STAINLESS STEEL PH15-7MO
12	CONNECTING LINK	STAINLESS STEEL ASTM A276 T316
13	FLOAT LEVER	STAINLESS STEEL ASTM A351 CF-8M
14	FLOAT *	STAINLESS STEEL ASTM A240 T304
17	1/2 NPT PIPE PLUG	STEEL COMM'L
25	1" NPT DRAIN PLUG	MALLEABLE IRON COMM'L
33	FLOAT STEM	STAINLESS STEEL ASTM A213

* CONCAVE FLOAT PATENTED

DATE: **09-01-03** DRWG. NO. **S-400**

APCO
VALVE AND PRIMER CORPORATION



SEWAGE AIR RELEASE VALVE ASSEMBLY

NTS

3312-650

NO.	DATE	REVISION	CHK	APVD	BY	APVD

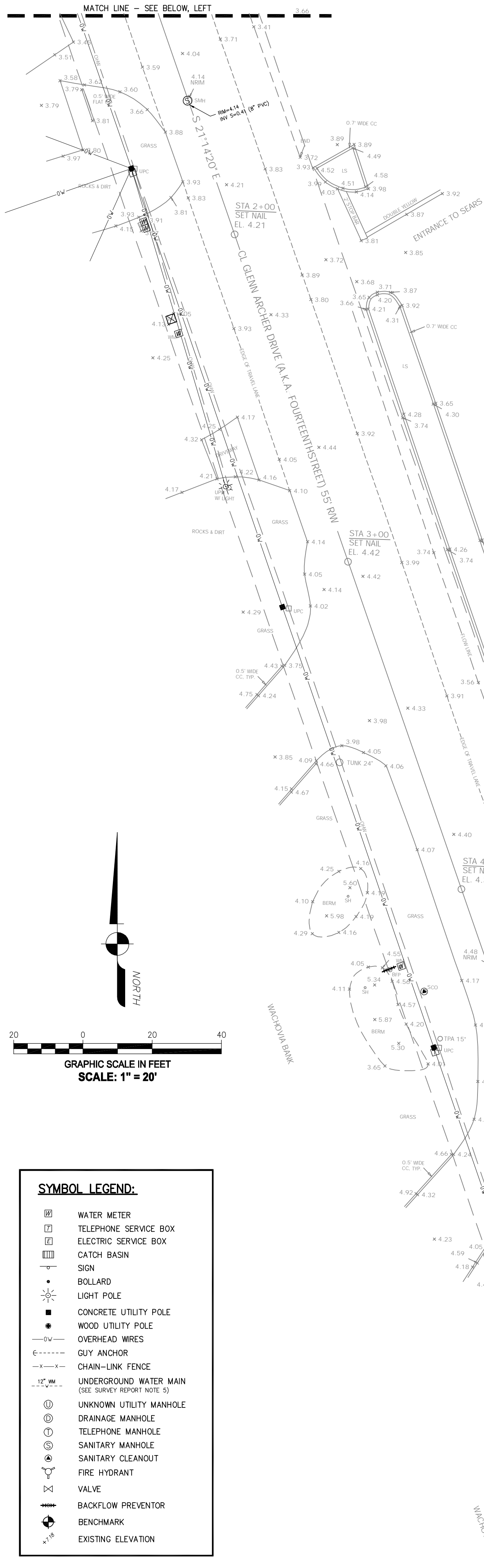
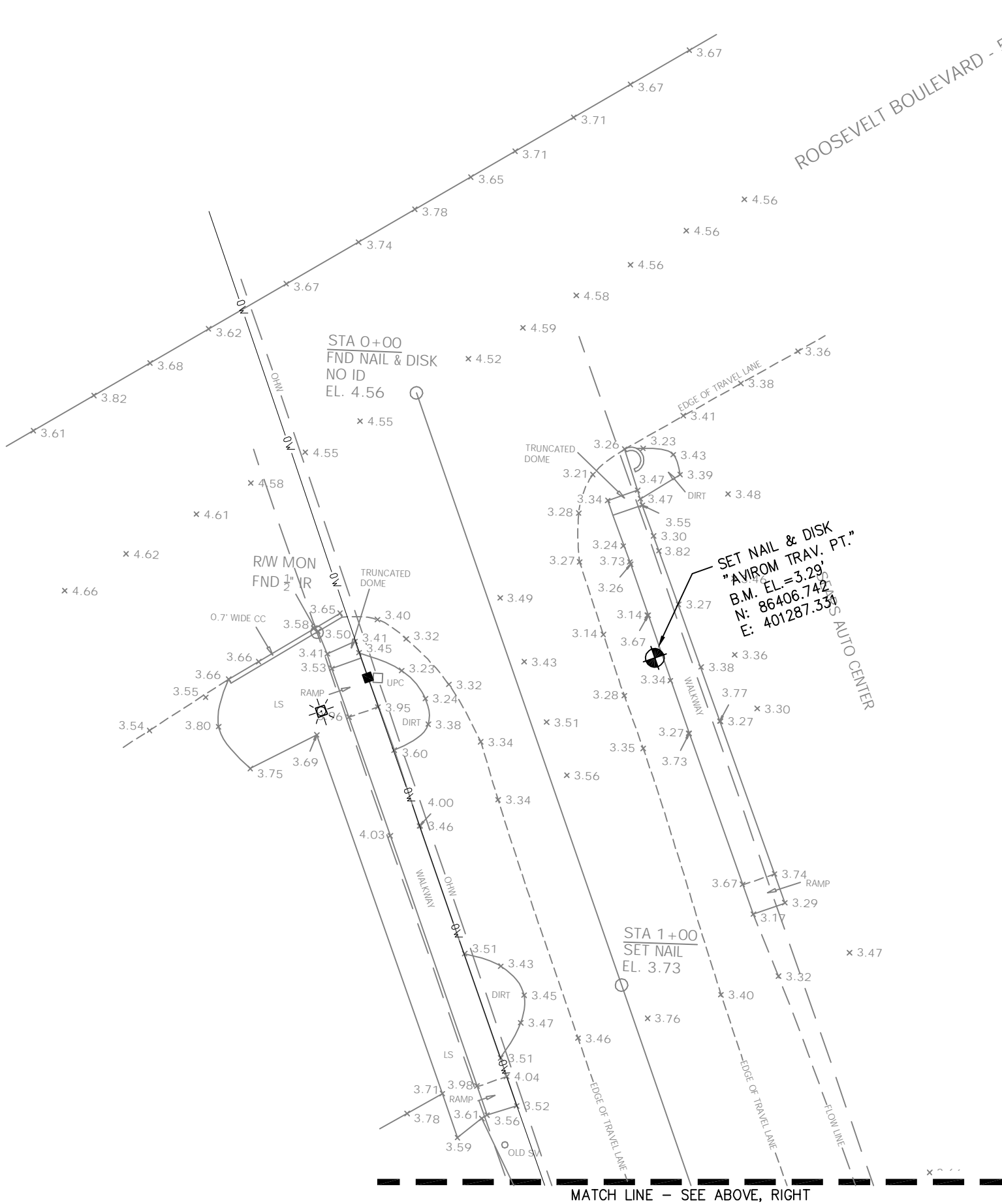
CH2MHILL

CIVIL
DETAILS

PUMP STATION F
FORCE MAIN
CITY OF KEY WEST
KEY WEST, FLORIDA

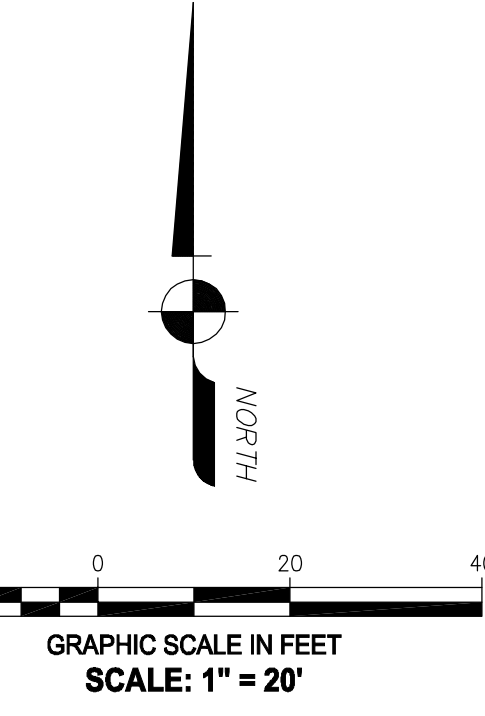
3011 S.W. WILLISTON ROAD
GAINESVILLE, FLORIDA 32608
E80000072 AAC001982

VERIFY SCALE	
DATE	AUGUST 2010
PROJ	406518
DWG	C-08
SHEET	



SURVEY and MAP REPORT:

1. Reproductions of this Sketch are not valid without the signature and the original raised seal of a Florida licensed surveyor and mapper.
2. No Title Opinion or Abstract to the subject property has been provided. It is possible that there are Deeds, Easements, or other instruments (recorded or unrecorded) which may affect the subject property. No search of the Public Records has been made by the Surveyor.
3. The specific purpose of this survey is to locate the existing above ground utilities and invert information within the right-of-way of Glenn Archer Drive as well as the lift station at the intersection with Flagler Avenue.
4. Data shown hereon was compiled from instrument(s) of record and does not constitute a boundary survey.
5. The underground utilities shown hereon are based on as-built drawing provided by others. The surveyor makes no warranties that the underground utilities shown comprise all such utilities in the area, either in service or abandoned. The surveyor further does not warrant that the underground utilities shown are in the exact location indicated although he does certify that they are shown as accurately as possible from information available. The surveyor has not physically located the underground utilities.
6. This map is intended to be displayed at a scale of 1:240 (1"=20').
7. The Grid coordinates shown hereon are based on the North American Datum of 1983, adjustment of 1990 (NAD 83/90), of the Florida State Plane Coordinate System (Transverse Mercator Projection), East Zone established by a Real-time Kinematic (RTK) GPS Control Survey which is certified to a 2 centimeter local accuracy (as defined in the FGDC Geospatial Positioning Accuracy Standards, Part 2: National Standard for Spatial Data Accuracy), relative to the nearest control point within the National Geodetic Survey's (NGS) Geodetic Control Network. Redundant ties were made to the following NGS horizontal control stations:
 1. "BAYOU" (PID Number AA0028)
 2. "WEST MARTELLO TOWER 2" (PID Number AA1146)
 Equipment Used: Trimble R8 GNSS Dual Frequency Receiver (Serial No. 4627118155)
 Processing Software: Trimble Geomatics Office, Version 1.63
8. Elevations shown hereon are based on the National Geodetic Vertical Datum of 1929 established by closed loop three-wire differential leveling closure to the following NGS's benchmark:
 1. "BAYOU" (PID Number AA0028) - Elevation 4.2290' (NGVD 29)
 The vertical controls meet or exceed Third Order, as defined in FGDC Geospatial Positioning Accuracy Standards, Part 4: Standards for Architecture, Engineering, Construction (A/E/C) and Facility Management.
9. Units of measurement are in U.S. Survey Feet and decimal parts thereof. Well identified features in this survey were field measured to a horizontal positional accuracy of 0.10'. The elevations on impervious surfaces were field measured to 0.03' and on ground surfaces to 0.1'.
10. Some inverts, accessories, pipe sizes, and types were inaccessible due to obstruction (filled with debris, solid waste and/or water).
11. Abbreviation Legend: ASPH.= Asphalt; B.M.= Benchmark; CONC.= Concrete; DIP= Ductile Iron Pipe; E= Easting; EL= Elevation; ELEC.= Electric; FD= Found; FGDC= Federal Geographic Data Committee; GPS= Global Positioning System; HORZ.= Horizontal; ID= Identification; IV= Invert Elevation; LB= Licensed Business; N= North; N&D= Nail and Disk; NGS= National Geodetic Survey; NGVD= National Geodetic Vertical Datum; OW= Overhead Wires; PLS.= Professional Land Surveyor; PID= Point Identifier; PT= Point; PVC= Polyvinyl-chloride Pipe; RIM= Rim Elevation; RTK= Real-time Kinematic; T.O.P.= Top of Pipe Elevation; TRAV.= Traverse; UNK.= Unknown; VERT.= Vertical; WM= Water Main.



SYMBOL LEGEND:

[Symbol]	WATER METER
[Symbol]	TELEPHONE SERVICE BOX
[Symbol]	ELECTRIC SERVICE BOX
[Symbol]	CATCH BASIN
[Symbol]	SIGN
[Symbol]	BOLLARD
[Symbol]	LIGHT POLE
[Symbol]	CONCRETE UTILITY POLE
[Symbol]	WOOD UTILITY POLE
[Symbol]	OVERHEAD WIRES
[Symbol]	GUY ANCHOR
[Symbol]	CHAIN-LINK FENCE
[Symbol]	UNDERGROUND WATER MAIN (SEE SURVEY REPORT NOTE 3)
[Symbol]	UNKNOWN UTILITY MANHOLE
[Symbol]	DRAINAGE MANHOLE
[Symbol]	TELEPHONE MANHOLE
[Symbol]	SANITARY MANHOLE
[Symbol]	SANITARY CLEANOUT
[Symbol]	FIRE HYDRANT
[Symbol]	VALVE
[Symbol]	BACKFLOW PREVENTOR
[Symbol]	BENCHMARK
[Symbol]	EXISTING ELEVATION

CERTIFICATION:

I HEREBY CERTIFY that the attached Specific Purpose Survey of the hereon delineated property is true and correct to the best of my knowledge and belief as prepared under my direction. I FURTHER CERTIFY that this Specific Purpose Survey meets the Minimum Technical Standards set forth in Chapter 5J-17.05, Florida Administrative Code, pursuant to Section 472.027, Florida Statutes.

Date: _____

KEITH M. CHEE-A-TOW, P.L.S.
 Florida Registration No. 5328
 AVIROM & ASSOCIATES, INC.
 L.B. No. 3300

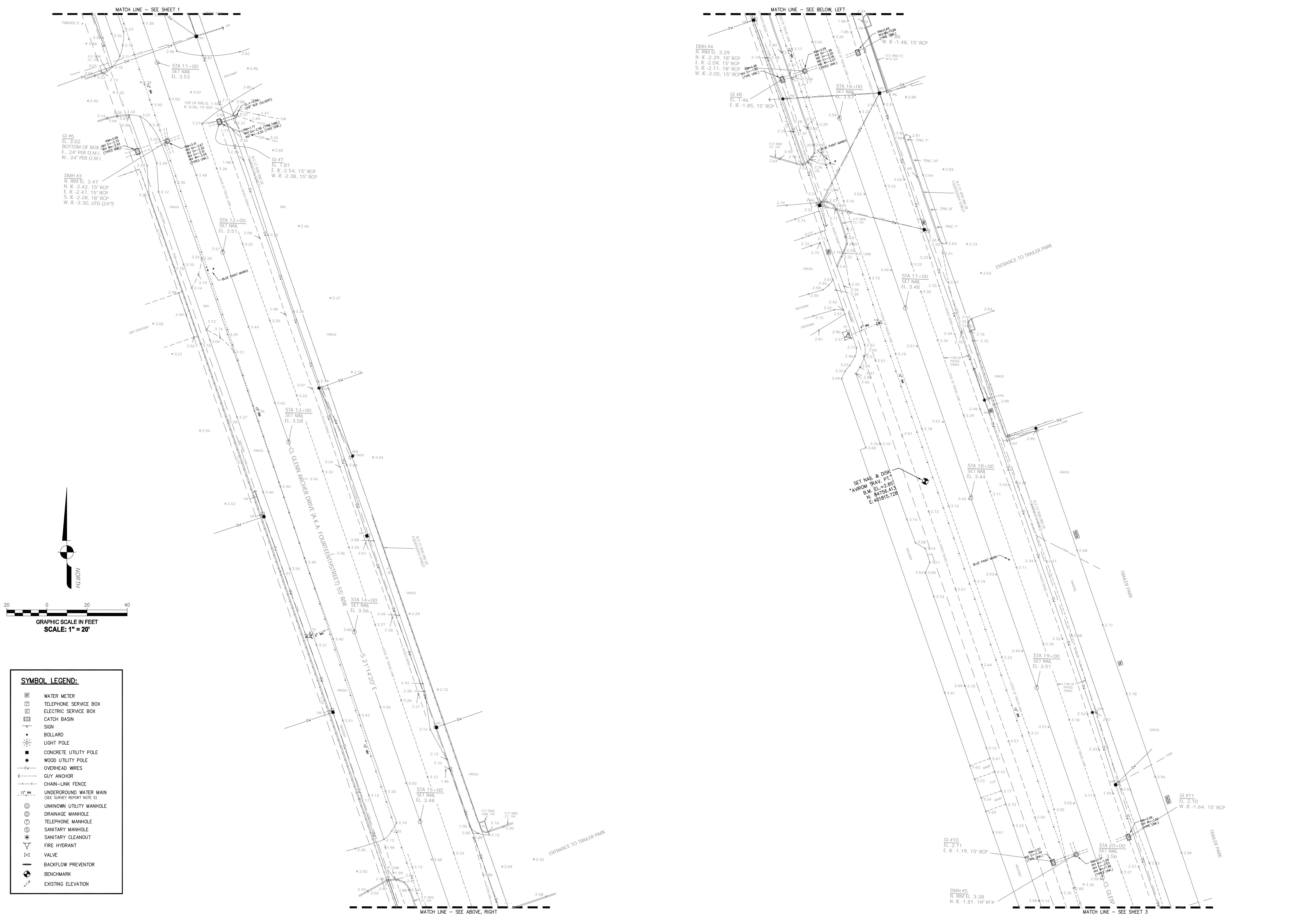
AVIROM & ASSOCIATES, INC.
 SURVEYING & MAPPING
 50 S.W. 2ND AVENUE, SUITE 102
 BOCA RATON, FLORIDA 33432
 TEL: (561) 392-2694, FAX: (561) 394-7125
 WWW.AVIROM.COM
 All rights reserved.
 This sketch is the property of AVIROM & ASSOCIATES, INC. and should not be reproduced or copied without written permission.

DATE	BY	REVISIONS

SPECIFIC PURPOSE SURVEY
KEY WEST
 14TH STREET (GLENN ARCHER DRIVE)
 ABOVE GROUND UTILITY LOCATIONS & INVERTS

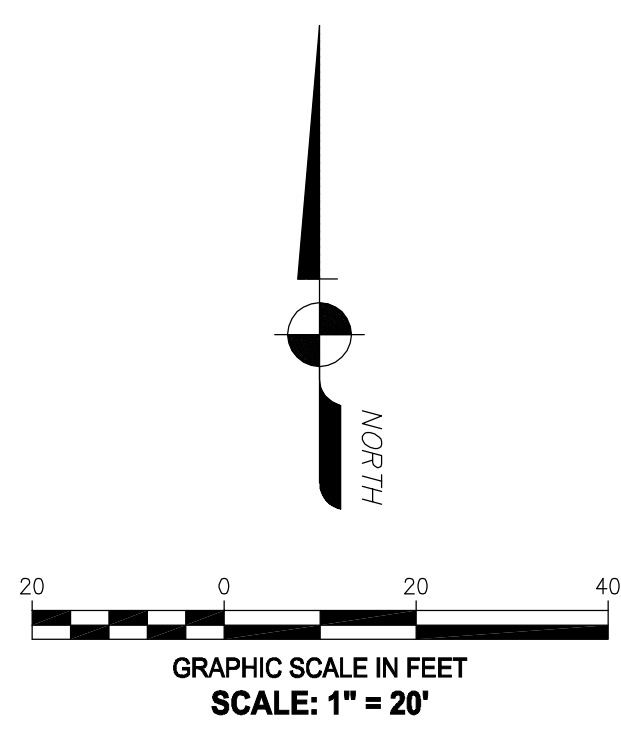
CITY OF KEY WEST,
MONROE COUNTY, FLORIDA

SCALE:	1" = 20'
DATE:	07/09/2010
BY:	S.A.M.
CHECKED:	K.M.C.
F.B. #	1542
PG.	37-55
SHEET	1 OF 3



MATCH LINE - SEE SHEET 1

MATCH LINE - SEE BELOW LEFT



SYMBOL LEGEND:

	WATER METER
	TELEPHONE SERVICE BOX
	ELECTRIC SERVICE BOX
	CATCH BASIN
	SIGN
	BOLLARD
	LIGHT POLE
	CONCRETE UTILITY POLE
	WOOD UTILITY POLE
	OVERHEAD WIRES
	GUY ANCHOR
	CHAIN-LINK FENCE
	UNDERGROUND WATER MAIN (SEE SURVEY REPORT NOTE 5)
	UNKNOWN UTILITY MANHOLE
	DRAINAGE MANHOLE
	TELEPHONE MANHOLE
	SANITARY MANHOLE
	SANITARY CLEANOUT
	FIRE HYDRANT
	VALVE
	BACKFLOW PREVENTOR
	BENCHMARK
	EXISTING ELEVATION

MATCH LINE - SEE ABOVE, RIGHT

MATCH LINE - SEE SHEET 3

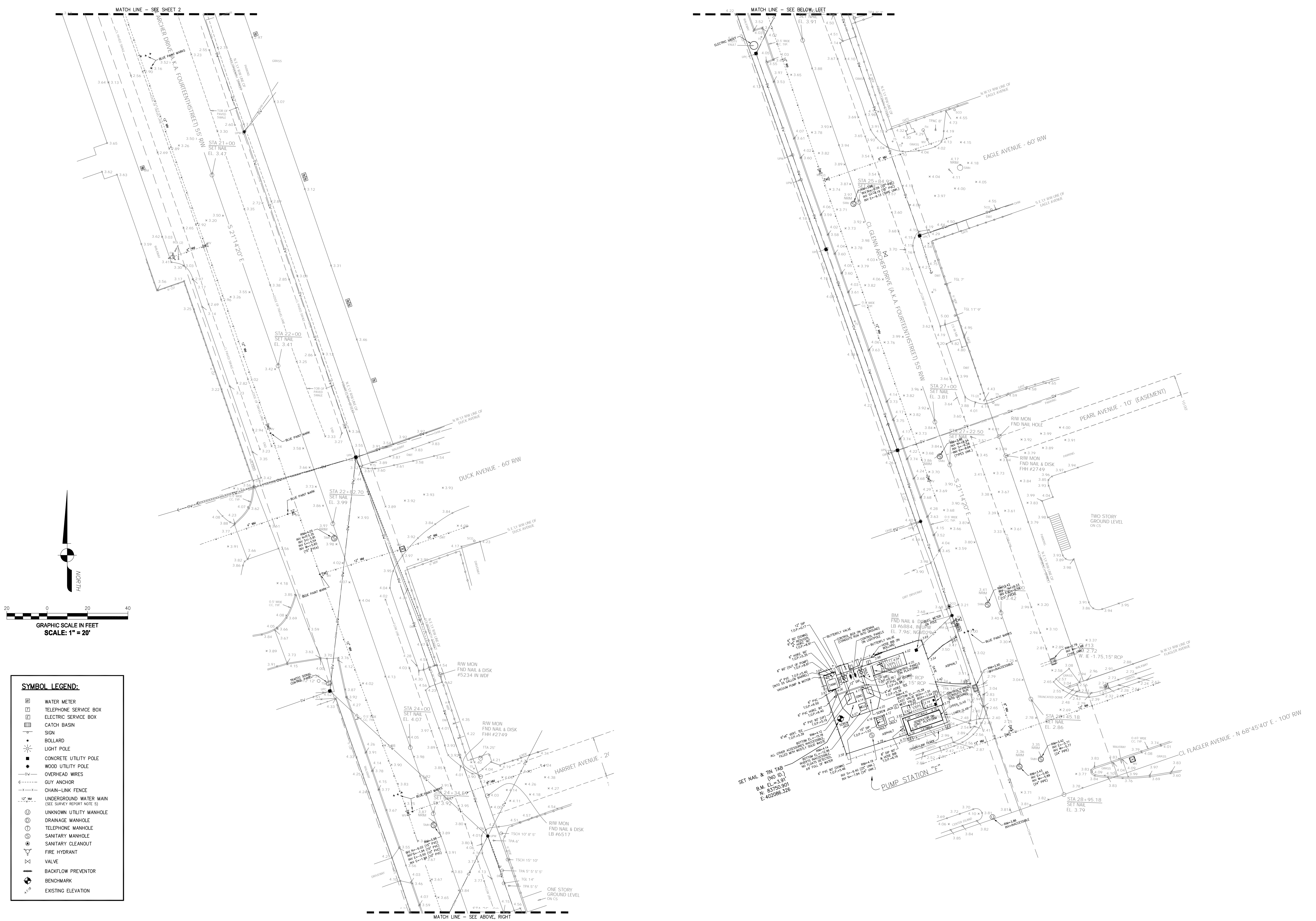
AVIROM & ASSOCIATES, INC.
 SURVEYING & MAPPING
 50 S.W. 2ND AVENUE, SUITE 102
 BOCA RATON, FLORIDA 33432
 TEL: (561) 392-2594, FAX: (561) 394-7125
 WWW.AVIROM.COM
 This sketch is the property of AVIROM & ASSOCIATES, INC. and should not be reproduced or copied without written permission.

REVISIONS	DATE	F.B./P.G.	BY	CKD	REVISIONS	DATE	F.B./P.G.	BY	CKD

SPECIFIC PURPOSE SURVEY
KEY WEST
 14TH STREET (GL/N ARCHER DRIVE)
 ABOVE GROUND UTILITY LOCATIONS & INVERTS
 CITY OF KEY WEST,
 MONROE COUNTY, FLORIDA

SCALE:	1" = 20'
DATE:	07/09/2010
BY:	S.A.M.
CHECKED:	K.M.C.
F.B.:	1542 PG. 37-55
SHEET:	2 OF 3

JOB #: **8713**



SYMBOL LEGEND:

	WATER METER
	TELEPHONE SERVICE BOX
	ELECTRIC SERVICE BOX
	CATCH BASIN
	SIGN
	BOLLARD
	LIGHT POLE
	CONCRETE UTILITY POLE
	WOOD UTILITY POLE
	OVERHEAD WIRES
	GUY ANCHOR
	CHAIN-LINK FENCE
	UNDERGROUND WATER MAIN (SEE SURVEY REPORT NOTE 5)
	UNKNOWN UTILITY MANHOLE
	DRAINAGE MANHOLE
	TELEPHONE MANHOLE
	SANITARY MANHOLE
	SANITARY CLEANOUT
	FIRE HYDRANT
	VALVE
	BACKFLOW PREVENTOR
	BENCHMARK
	EXISTING ELEVATION

AVIROM & ASSOCIATES, INC.
SURVEYING & MAPPING
 50 S.W. 2ND AVENUE, SUITE 102
 BOCA RATON, FLORIDA 33432
 TEL: (561) 392-2894, FAX: (561) 394-7125
 © 2010 AVIROM & ASSOCIATES, INC. All rights reserved.
 This sketch is the property of AVIROM & ASSOCIATES, INC. and should not be reproduced or copied without written permission.

AVIROM & ASSOCIATES
 ESTABLISHED 1978

REVISIONS	DATE	F.B./P.G.	BY	CKD	REVISIONS	DATE	F.B./P.G.	BY	CKD

SPECIFIC PURPOSE SURVEY
KEY WEST
 14TH STREET (BL/N ARCHER DRIVE)
 ABOVE GROUND UTILITY LOCATIONS & INVERTS

CITY OF KEY WEST,
 MONROE COUNTY, FLORIDA

SCALE:	1" = 20'
DATE:	07/09/2010
BY:	S.A.M.
CHECKED:	K.M.C.
F.B.:	1542
PG.:	37-55
SHEET:	3 OF 3

JOB #: **8713**