

TREPANIER



& ASSOCIATES INC

LAND USE PLANNING
DEVELOPMENT CONSULTANTS

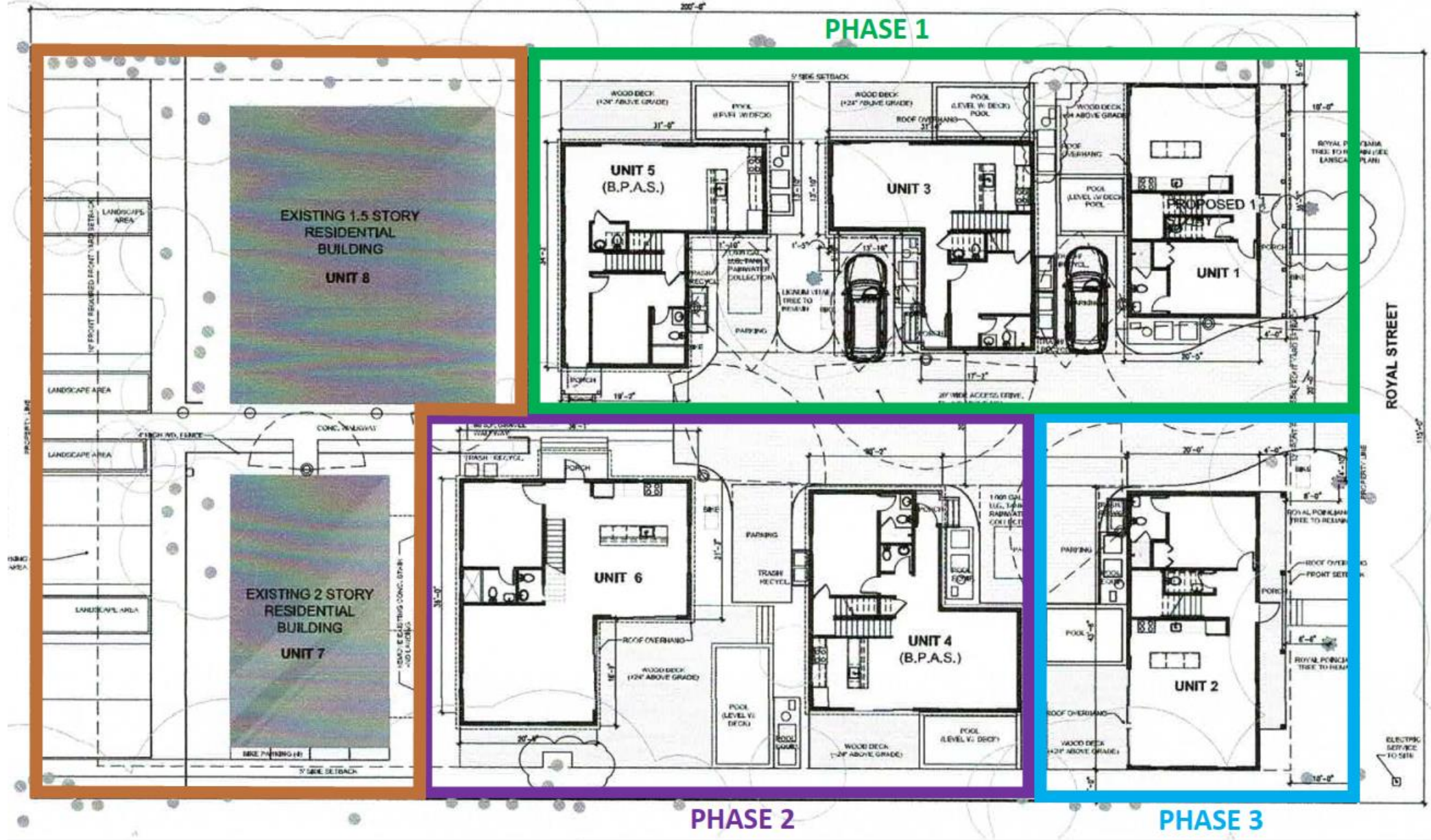


1316 Royal St - 1319 William St

Phasing Modification of Major Development Plan Res. No. 2021-197

Linked Affordables – 1703 Von Phister St

Phase	Units	Commencement
1	1	<i>Commenced</i>
	3	<i>Commenced</i>
	5	<i>Commenced</i>
2	4	04/15/24
	6	04/15/24
3	2	04/15/26



Phasing Diagram



View from neighbor property
(site visit with Property Manager)

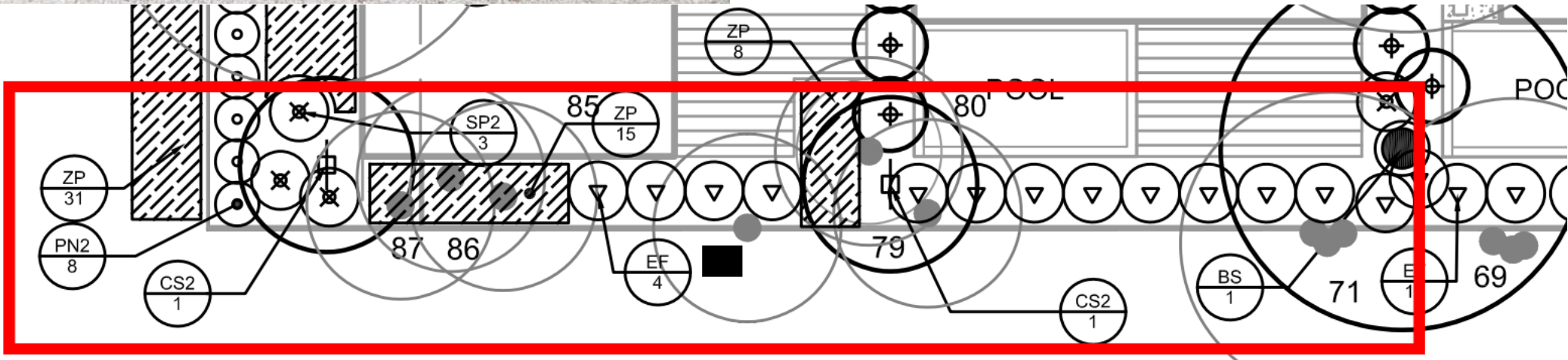
Concerned about view from property line

Approved plans show very densely planted area:

- 5 Canopy Trees (Gumbo Limbos, Satan leaf...)
- 7 Palms (adonidia, arecas...)
- 20 understory/ large tropical shrubs (stoppers, capers)
- 26 large tropical grasses (salt meadow and coontie...)

Plus – Agrees to install:

- 6-ft fence
- Add'l palms in any areas that remain open



TREPANIER



& ASSOCIATES INC

LAND USE PLANNING
DEVELOPMENT CONSULTANTS



1316 Royal St - 1319 William St

Phasing Modification of Major Development Plan Res. No. 2021-197

Linked Affordables – 1703 Von Phister St