

DEVELOPMENT DOCUMENTS for:
MARTY'S PLACE
AH of MONROE COUNTY INC
KEY WEST FL 33040

DESIGN BUILD CONTRACTOR:

KENMAR GENERAL CONTRACTING, LLC

SBA Certified 8(a) WOSB Design/Build Construction Company
Jacksonville Office: 31 W. Adams Street, Suite 102, Jacksonville, FL 32202
Key West Office: 923 White Street, Key West, FL 33040
www.kenmargc.com
PHONE: 305-797-5344 Fax: 866-941-6701

CONSTRUCTION DOCUMENTS

FEBRUARY 17, 2014

DEVELOPMENT CONSULTANT:

TREPANIER & ASSOCIATES

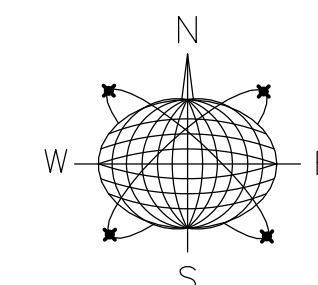
402 APPLEROUTH LANE, Key West Florida 33040 PHONE: 305-293-8983
Fax: 305-293-8748

INTERIOR DESIGN:

M INTERIOR DESIGN

923 White Street, Key West Florida 33040
PHONE: 305-509-2659 Fax: 305-320-0521

RICHARD J. MILELLI
FL PE # 58315

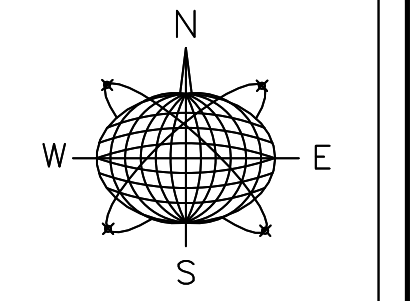
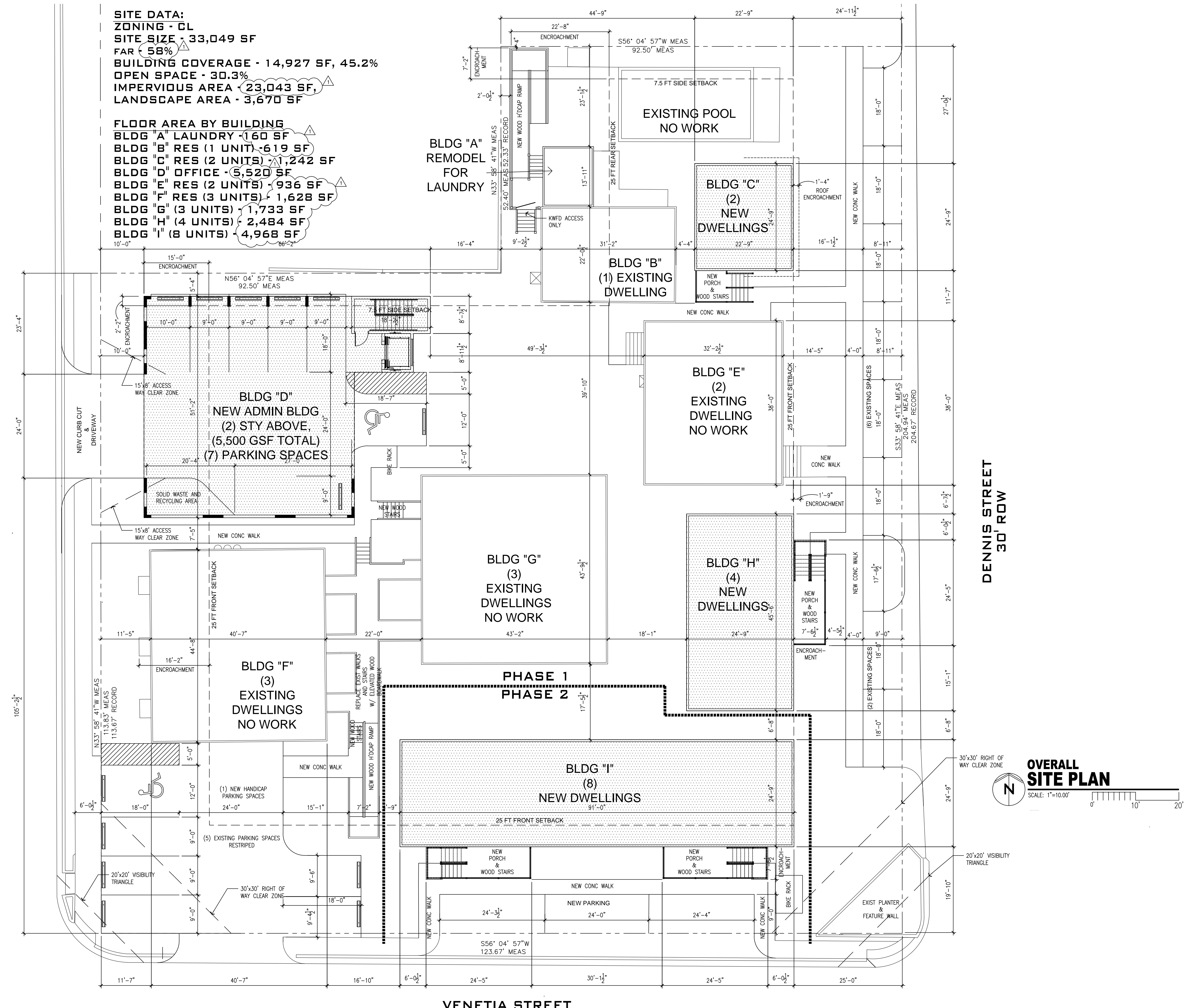


MERIDIAN ENGINEERING, LLC

201 FRONT STREET, SUITE 209, KEY WEST FL 33040, PHONE 305-293-3263, FAX 305-293-4899, AUTHORIZATION NO. 29401

SITE DATA:
 ZONING - CL
 SITE SIZE - 33,049 SF
 FAR - 58%
 BUILDING COVERAGE - 14,927 SF, 45.2%
 OPEN SPACE - 30.3%
 IMPERVIOUS AREA - 23,043 SF,
 LANDSCAPE AREA - 3,670 SF

FLOOR AREA BY BUILDING
 BLDG "A" LAUNDRY - 160 SF
 BLDG "B" RES (1 UNIT) - 619 SF
 BLDG "C" RES (2 UNITS) - 1,242 SF
 BLDG "D" OFFICE - 5,520 SF
 BLDG "E" RES (2 UNITS) - 936 SF
 BLDG "F" RES (3 UNITS) - 1,628 SF
 BLDG "G" (3 UNITS) - 1,733 SF
 BLDG "H" (4 UNITS) - 2,484 SF
 BLDG "I" (8 UNITS) - 4,968 SF



Meridian Engineering LLC
 201 Front Street, Suite 210
 Key West, Florida 33040
 AUTHORIZATION #29401
 ph:305-293-5263 fax:293-4899

Seal:

NOT VALID FOR CONSTRUCTION UNLESS
 SIGNED AND SEALED IN THIS BLOCK
 RICHARD J. MILELLI
 PE #56315

General Notes:

AH of MONROE COUNTY INC.
 P.O. BOX 4374
 KEY WEST, FL 33040

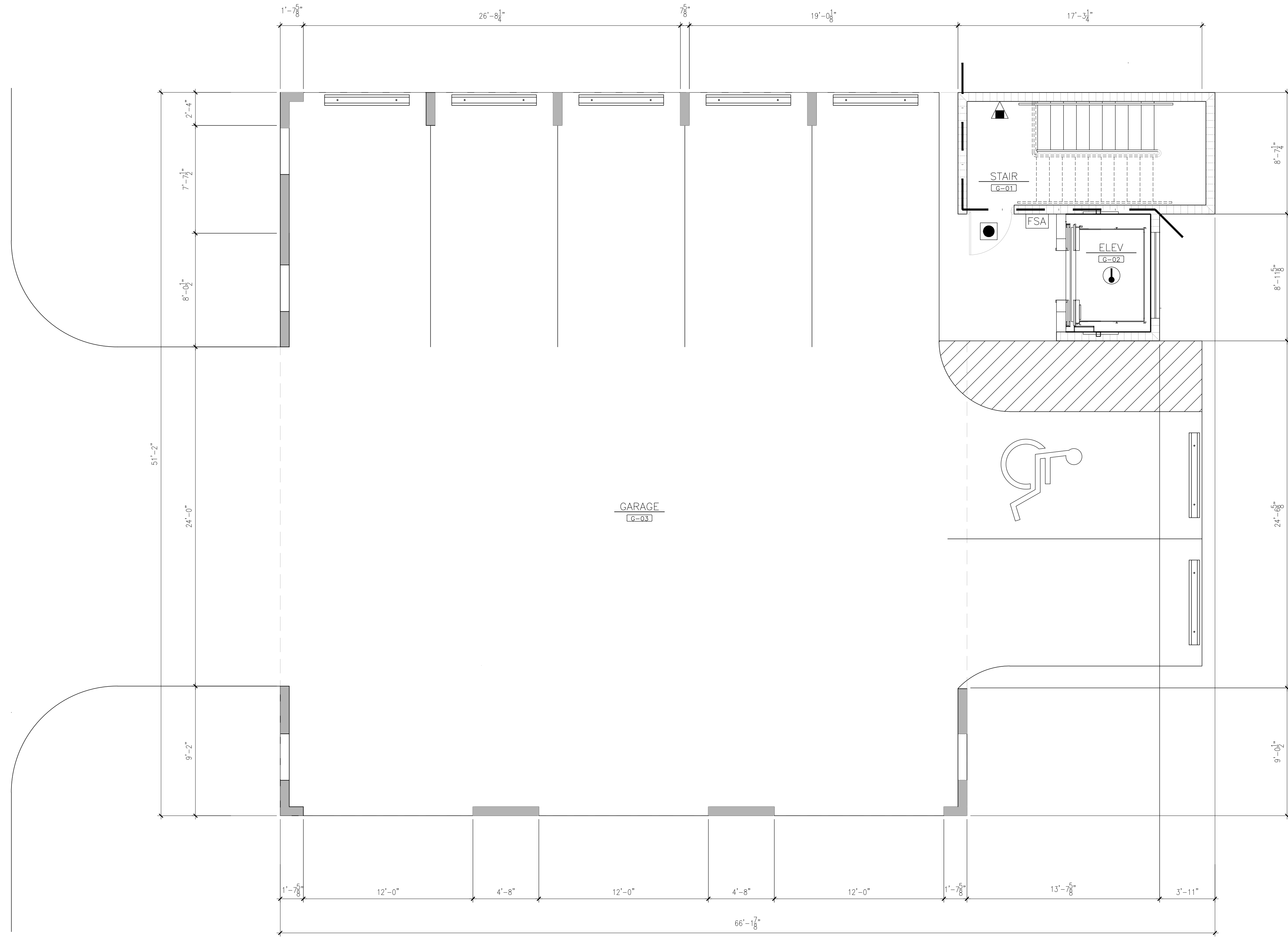
Drawn By: MT
 Checked By: RJM
 Project No: 11-0102
 Scale: AS NOTED

HTA AutoCad File No.

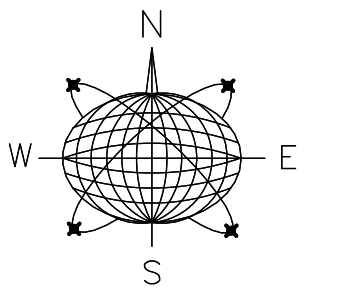
| Revisions: |
|------------|
| |
| |
| |
| |
| |
| |
| |
| |
| |
| |
| |
| |
| |
| |
| |
| |
| |
| |
| |
| |

Title: FIRST FLOOR PLAN

Sheet Number: **1**
 Date: 04.14.14



GROUND FLOOR PLAN
 SCALE: 1/4"=1'-0"
 0' 4' 8'



Meridian Engineering LLC
 201 Front Street, Suite 210
 Key West, Florida 33040
 AUTHORIZATION #29401
 ph:305-293-3263 fax:293-4899

Seal:

NOT VALID FOR CONSTRUCTION UNLESS
 SIGNED AND SEALED BY THE BLOCK
 RICHARD J. MILELLI
 PE #55315

General Notes:

AH of MONROE COUNTY INC.

P.O. BOX 4374
 KEY WEST, FL 33040

| | |
|-------------|-------------|
| Drawn By: | Checked By: |
| MT | RJM |
| Project No: | Scale: |
| 11-0102 | AS NOTED |

HTA AutoCad File No.

| Revisions: |
|------------|
| |
| |
| |
| |
| |
| |
| |
| |
| |
| |
| |

Title:
GROUND FLOOR PLAN

Sheet Number:
2

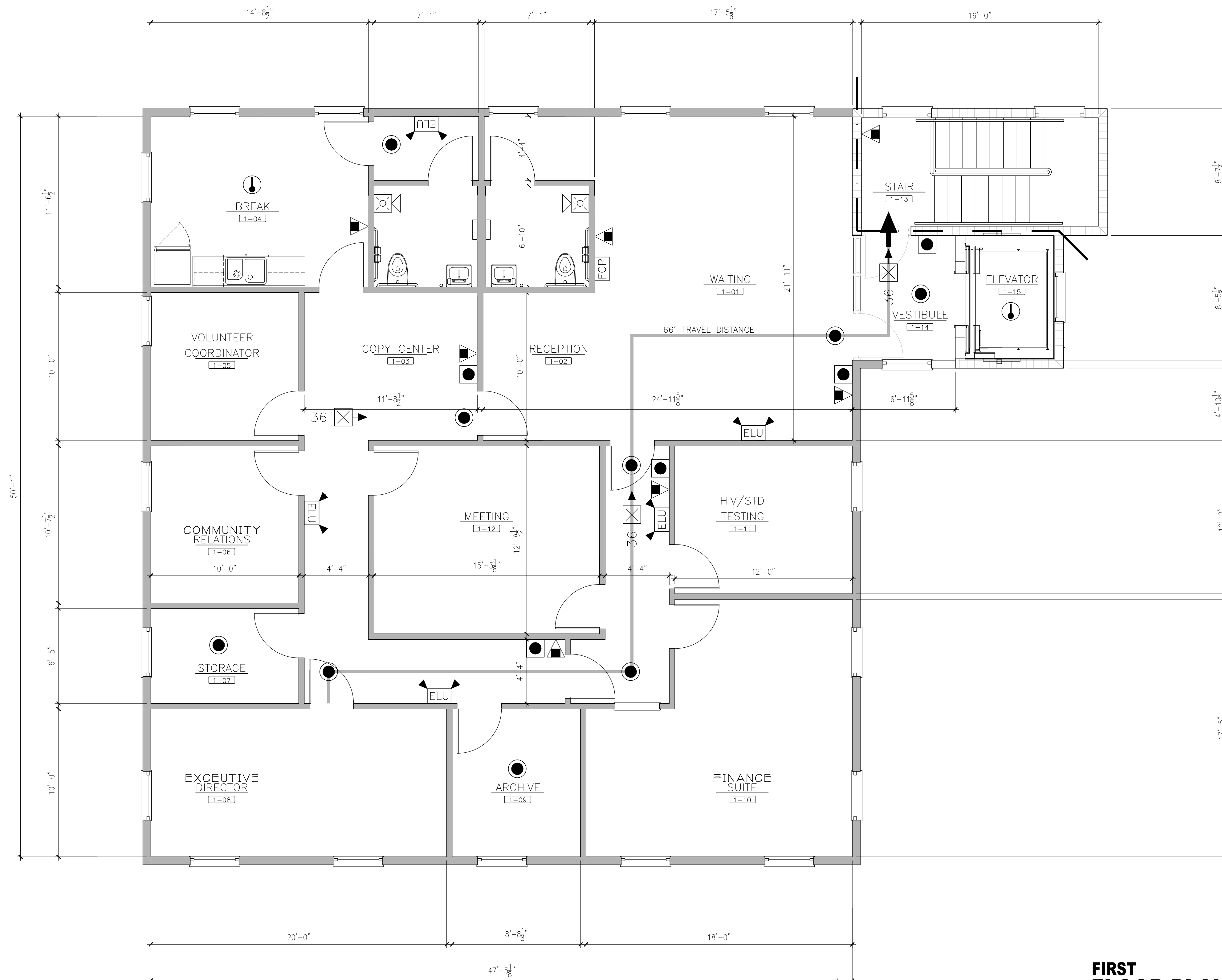
Date: 02.18.14

LIFE SAFETY LEGEND

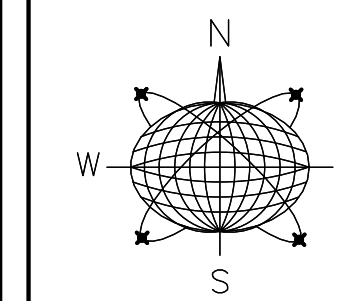
- FOUR HOUR FIRE / SMOKE
- FOUR HOUR FIRE
- THREE HOUR FIRE / SMOKE
- THREE HOUR FIRE
- TWO HOUR FIRE / SMOKE
- TWO HOUR FIRE
- ONE HOUR FIRE / SMOKE
- ONE HOUR FIRE
- SMOKE RESISTANT TO DECK
- SMOKE RESISTANT TO 4" ABOVE CLG.
- ELU EMERGENCY LIGHT
- HEAT DETECTOR
- PULL STATION
- HEAT DETECTOR
- HORN WITH STROBE
- 36 ILLUMINATED EXIT SIGN WITH DIRECTION ARROW AND EXIT WIDTH
- FCP FIRE ALARM CONTROL PANEL
- PSA FIRE SYSTEM ANNUNCIATOR
- DOOR HOLDER
- FIRE EXTINGUISHER
- FIRE EXTINGUISHER CABINET RECESS WITH RED PANEL BEHIND 6" OUTSIDE CABINET
- SC SMOKE COMPARTMENT
- PRIMARY EXIT
- SECONDARY EXIT

GENERAL NOTES

1. REFER TO A7'S SHEETS FOR SIGN LOCATIONS




FIRST FLOOR PLAN
 SCALE: 1/4"=1'-0"

Meridian Engineering LLC
 201 Front Street, Suite 210
 Key West, Florida 33040
 AUTHORIZATION #29401
 ph:305-293-5263 fax:293-4899

Seal:

NOT VALID FOR CONSTRUCTION UNLESS
 SIGNED AND SEALED IN THIS BLOCK
 RICHARD J. MILELLI
 PE #58315

General Notes:

AH of MONROE COUNTY INC.

P.O. BOX 4374
 KEY WEST, FL 33040

Drawn By: MT Checked By: RJM

Project No. 11-0102 Scale: AS NOTED

HTA AutoCad File No.

| Revisions: |
|------------|
| |
| |
| |
| |
| |
| |
| |
| |
| |

Title:
 SECOND FLOOR PLAN

Sheet Number:

3

Date: 02.18.14

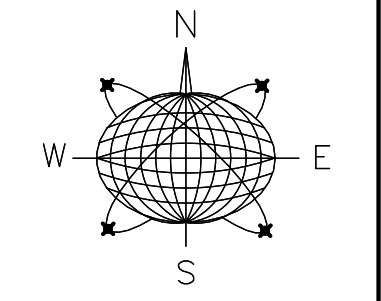
LIFE SAFETY LEGEND

- [Symbol: Dashed line] FOUR HOUR FIRE / SMOKE
- [Symbol: Dotted line] FOUR HOUR FIRE
- [Symbol: Dash-dot line] THREE HOUR FIRE / SMOKE
- [Symbol: Long-dash line] THREE HOUR FIRE
- [Symbol: Short-dash line] TWO HOUR FIRE / SMOKE
- [Symbol: Dash-dot-dot line] TWO HOUR FIRE
- [Symbol: Solid line] ONE HOUR FIRE / SMOKE
- [Symbol: Solid line] ONE HOUR FIRE
- [Symbol: Dashed line] SMOKE RESISTANT TO DECK
- [Symbol: Dotted line] SMOKE RESISTANT TO 4" ABOVE CLG.

- [Symbol: ELU] EMERGENCY LIGHT
- [Symbol: Square with dot] HEAT DETECTOR
- [Symbol: Square with circle] PULL STATION
- [Symbol: Square with circle] HEAT DETECTOR
- [Symbol: Square with X] HORN WITH STROBE
- [Symbol: Square with X and arrow] ILLUMINATED EXIT SIGN WITH DIRECTION ARROW AND EXIT WIDTH
- [Symbol: Square with X] EXIT WIDTH
- [Symbol: Square with circle] FACP FIRE ALARM CONTROL PANEL
- [Symbol: Square with circle] FSA FIRE SYSTEM ANNUNCIATOR
- [Symbol: Circle with vertical line] DOOR HOLDER
- [Symbol: Triangle with dot] FIRE EXTINGUISHER
- [Symbol: Triangle with dot] FIRE EXTINGUISHER CABINET RECESS WITH RED PANEL BEHIND 6" OUTSIDE CABINET
- [Symbol: SC] SMOKE COMPARTMENT
- [Symbol: Arrow] PRIMARY EXIT
- [Symbol: Arrow] SECONDARY EXIT

GENERAL NOTES

1. REFER TO A7'S SHEETS FOR SIGN LOCATIONS



Meridian Engineering LLC
201 Front Street, Suite 210
Key West, Florida 33040
AUTHORIZATION #29401
ph:305-293-5263 fax:293-4899

Seal:

NOT VALID FOR CONSTRUCTION UNLESS
SIGNED AND SEALED BY THIS BLOCK

RICHARD J. MILELLI
PE #55315

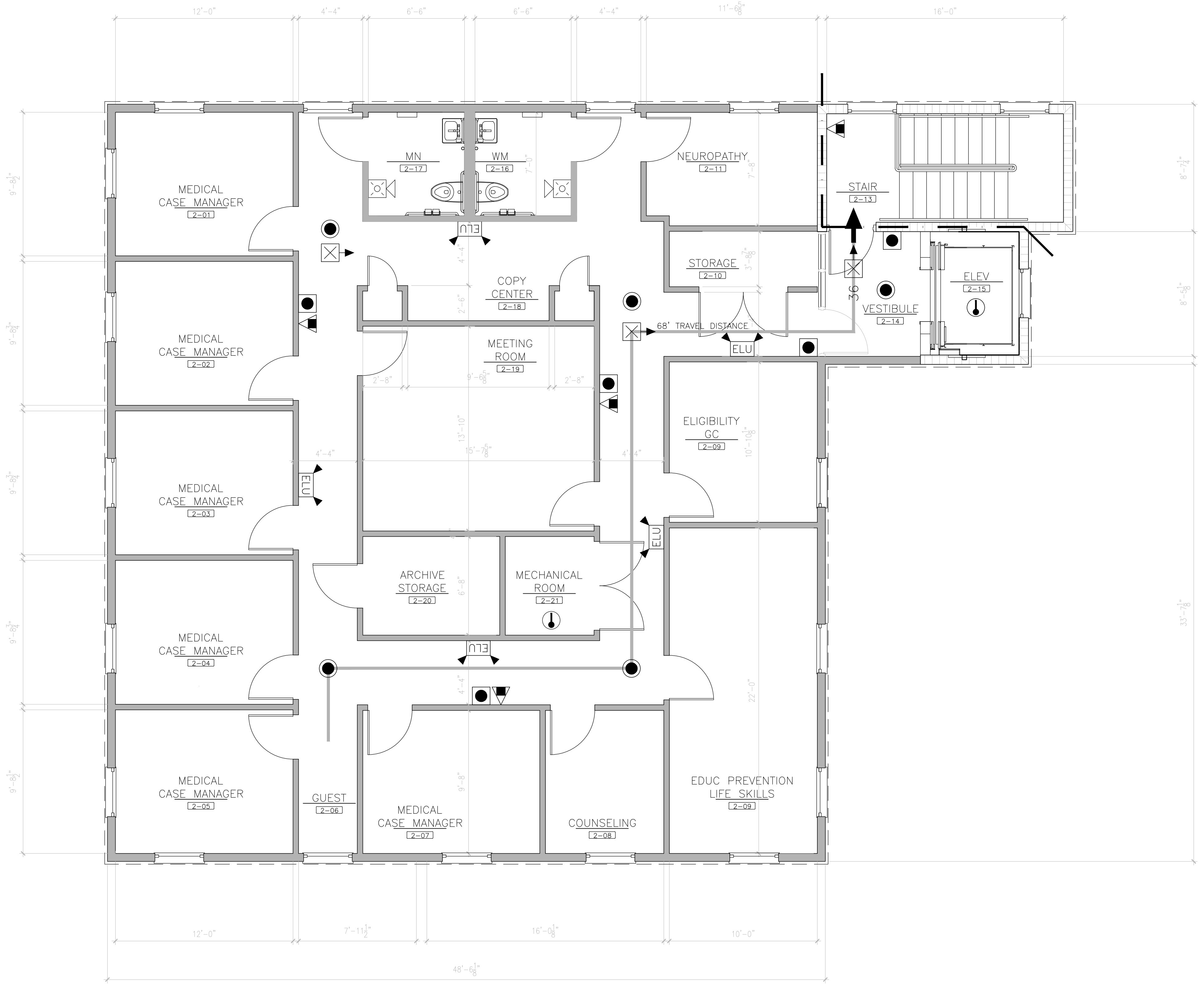
General Notes:

AH of MONROE COUNTY INC.
P.O. BOX 4374
KEY WEST, FL 33040

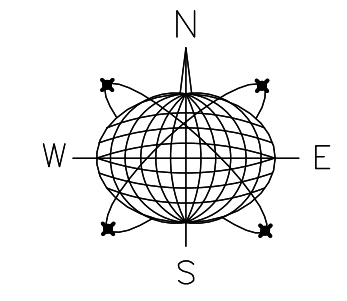
Drawn By: MT
Checked By: RJM
Project No: 11-0102
Scale: AS NOTED
HTA AutoCad File No.

| Revisions: | |
|------------|--|
| | |
| | |
| | |
| | |
| | |
| | |
| | |
| | |
| | |
| | |

Title: SECOND FLOOR PLAN
Sheet Number: **4**
Date: 02.18.14



SECOND FLOOR FLOOR PLAN
SCALE: 1/4"=1'-0"
0' 4' 8'



Meridian Engineering LLC
201 Front Street, Suite 210
Key West, Florida 33040
AUTHORIZATION #29401
ph:305-293-5263 fax:293-4899

Seal:

NOT VALID FOR CONSTRUCTION UNLESS
SIGNED AND SEALED BY THE BLOCK
RICHARD J. MILELLI
PE #58315

General Notes:

AH of MONROE COUNTY INC.
P.O. BOX 4374
KEY WEST, FL 33040

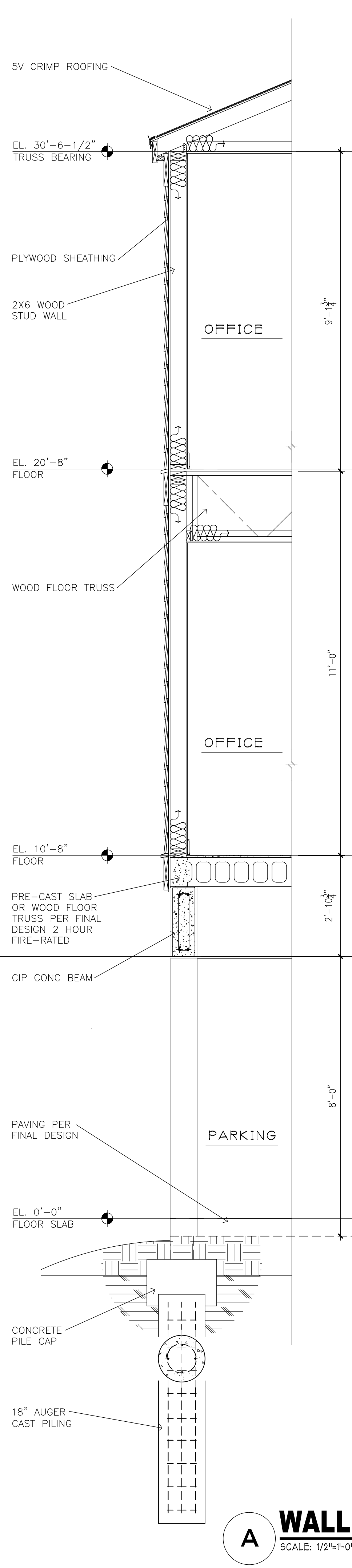
Drawn By: MT
Checked By: RJM
Project No: 11-0102
Scale: AS NOTED
HTA AutoCad File No.

| Revisions: |
|------------|
| |
| |
| |
| |
| |
| |
| |
| |
| |
| |

Title:
EXTERIOR ELEVATIONS

Sheet Number:
5

Date: 02.18.14



WEST ELEVATION
SCALE: 3/16"=1'-0"



NORTH ELEVATION
SCALE: 3/16"=1'-0"

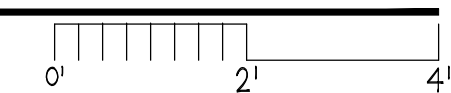


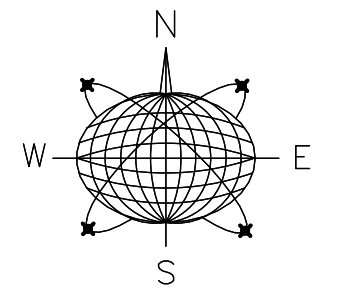
EAST ELEVATION
SCALE: 3/16"=1'-0"



SOUTH ELEVATION
SCALE: 3/16"=1'-0"

A WALL SECTION
SCALE: 1/2"=1'-0"



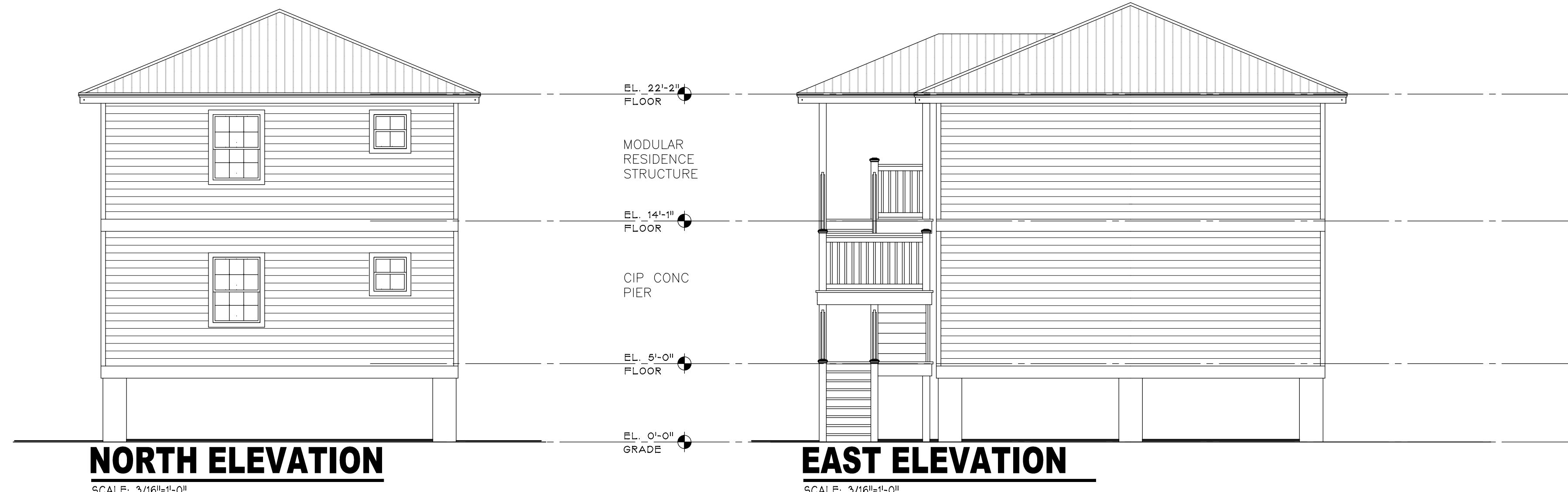


Meridian Engineering LLC
 201 Front Street, Suite 210
 Key West, Florida 33040
 AUTHORIZATION #29401
 ph 305-293-5263 fax 293-4899

Seal:

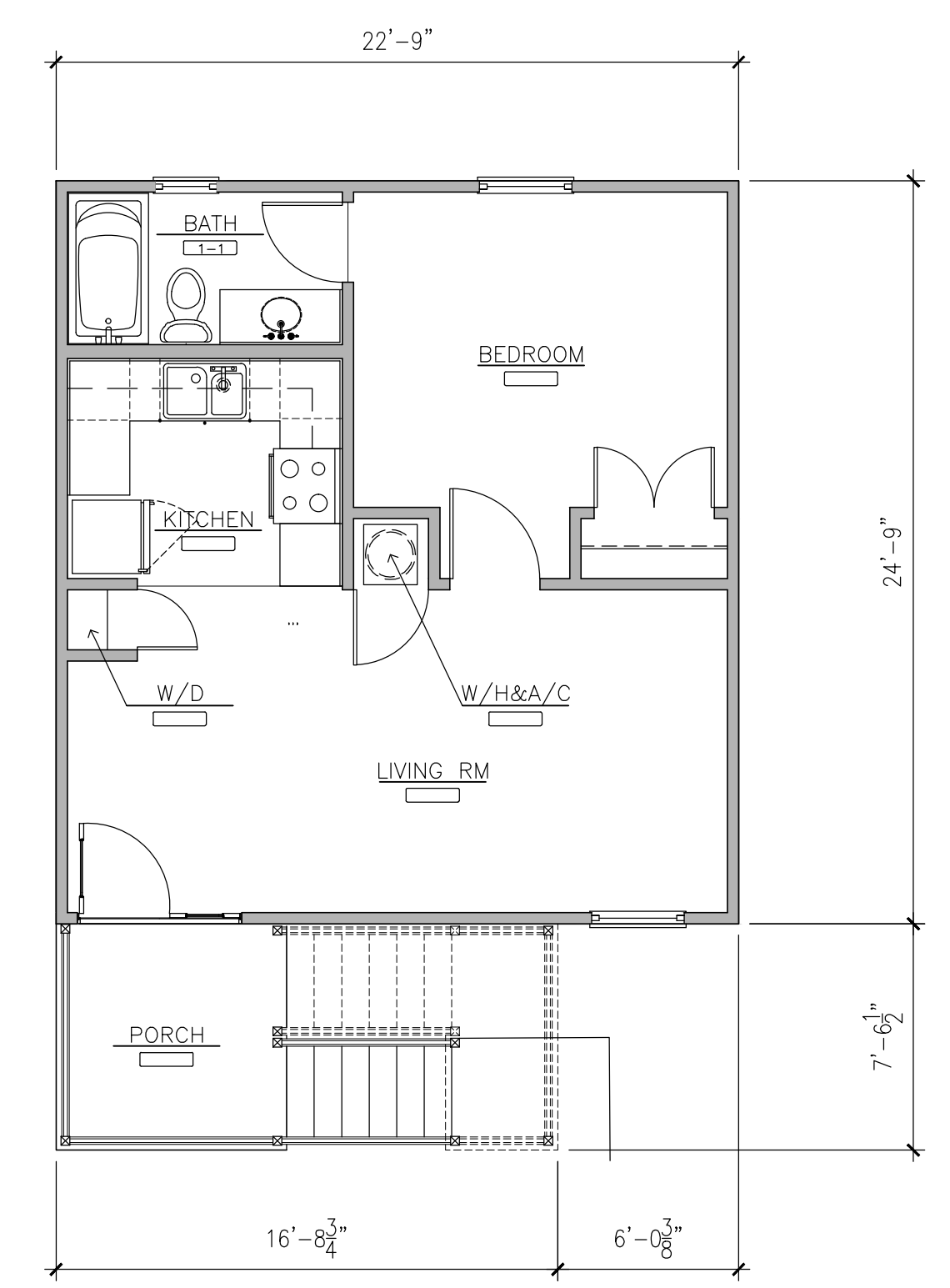
NOT VALID FOR CONSTRUCTION UNLESS
 SIGNED AND SEALED BY THE DESIGNER
 RICHARD J. MILELLI
 PE #58315

General Notes:



NORTH ELEVATION
 SCALE: 3/16"=1'-0"

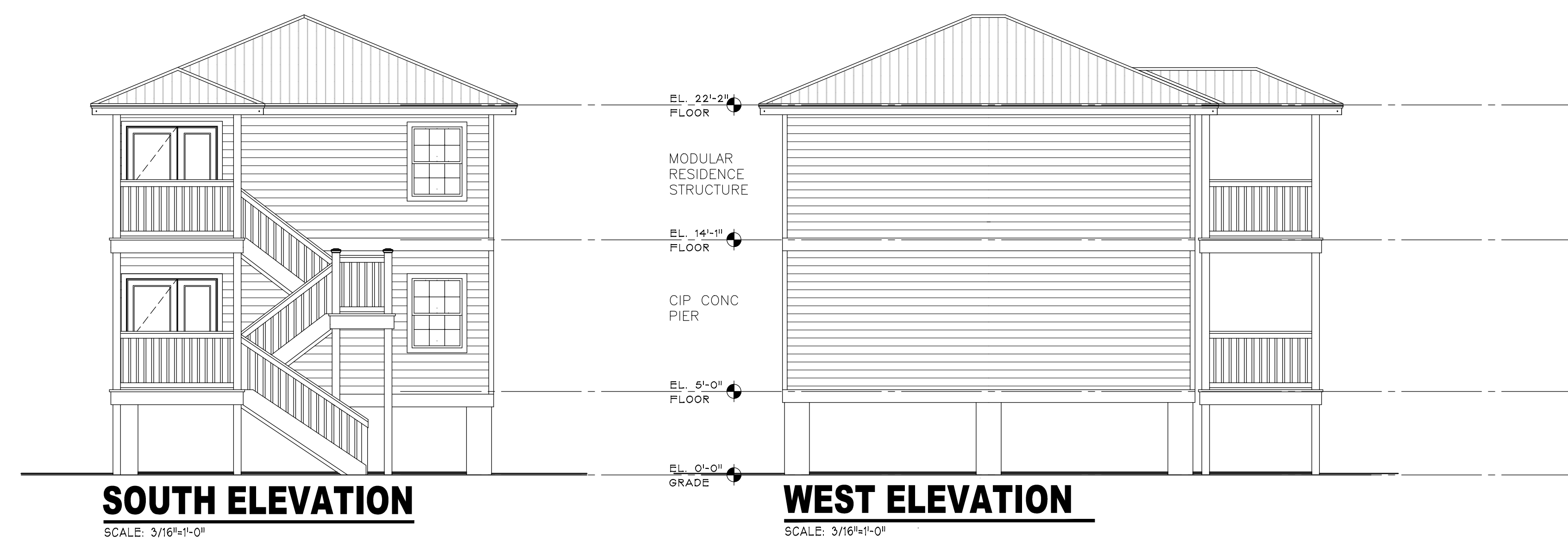
EAST ELEVATION
 SCALE: 3/16"=1'-0"



SEE 4 UNIT PLAN SHEET 7
 FOR DIMENSIONS,
 INFORMATION AND DETAILS



**2 UNIT
 FLOOR PLAN**
 SCALE: 3/16"=1'-0"



SOUTH ELEVATION
 SCALE: 3/16"=1'-0"

WEST ELEVATION
 SCALE: 3/16"=1'-0"

AH of MONROE COUNTY INC.
 P.O. BOX 4374
 KEY WEST, FL 33040

| | |
|------------------------|--------------------|
| Drawn By: MT | Checked By: RJM |
| Project No. 11-0102 | Scale: AS NOTED |

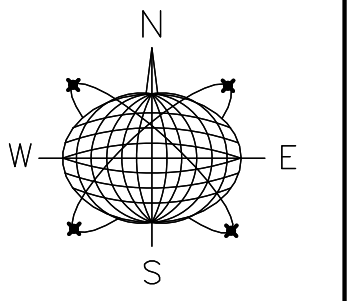
HTA AutoCad File No.

| |
|------------|
| Revisions: |
| |
| |
| |
| |
| |
| |

Title:
**2 UNIT
 FLOOR PLAN
 &
 ELEVATIONS**

Sheet Number:
6

Date: 02.18.14



Meridian Engineering LLC
201 Front Street, Suite 210
Key West, Florida 33040
AUTHORIZATION #29401
ph:305-293-5263 fax:293-4899

Seal:

NOT VALID FOR CONSTRUCTION UNLESS
SIGNED AND SEALED IN THIS BLOCK
RICHARD J. MILELLI
PE #58315

General Notes:

AH of MONROE COUNTY INC.
P.O. BOX 4374
KEY WEST, FL 33040

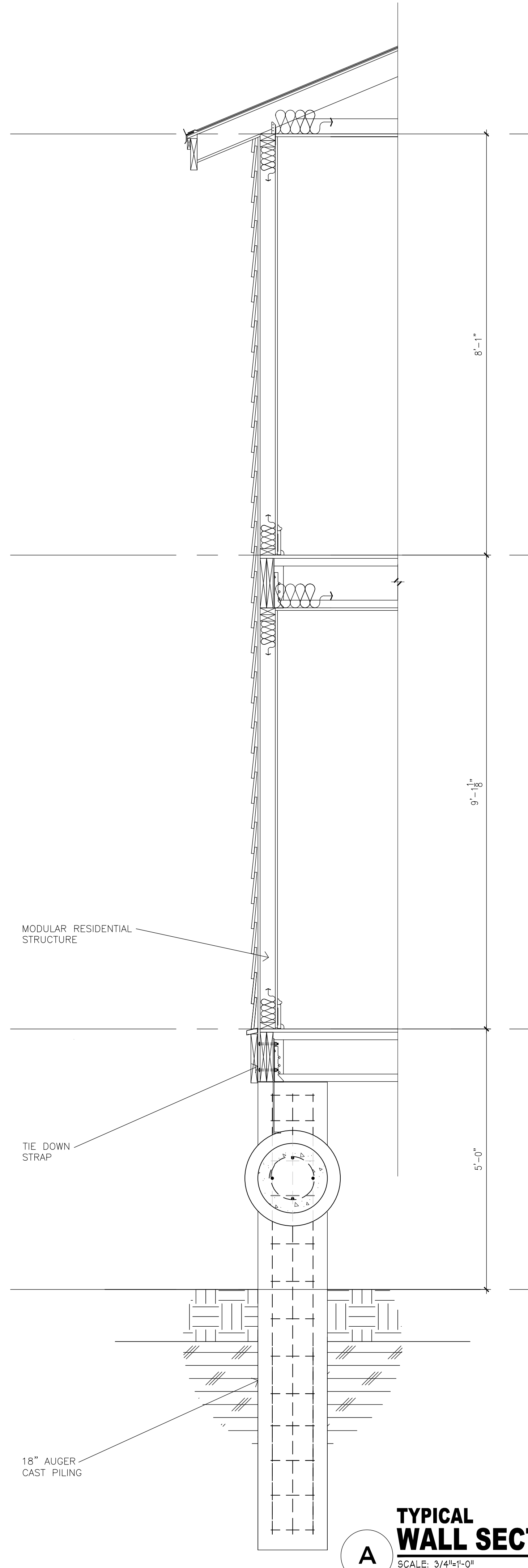
Drawn By: MT Checked By: RJM
Project No. 11-0102 Scale: AS NOTED
HTA AutoCad File No.

| Revisions: |
|------------|
| |
| |
| |
| |
| |
| |
| |
| |
| |
| |

Title:
4 UNIT FLOOR PLAN & ELEVATIONS

Sheet Number:
7

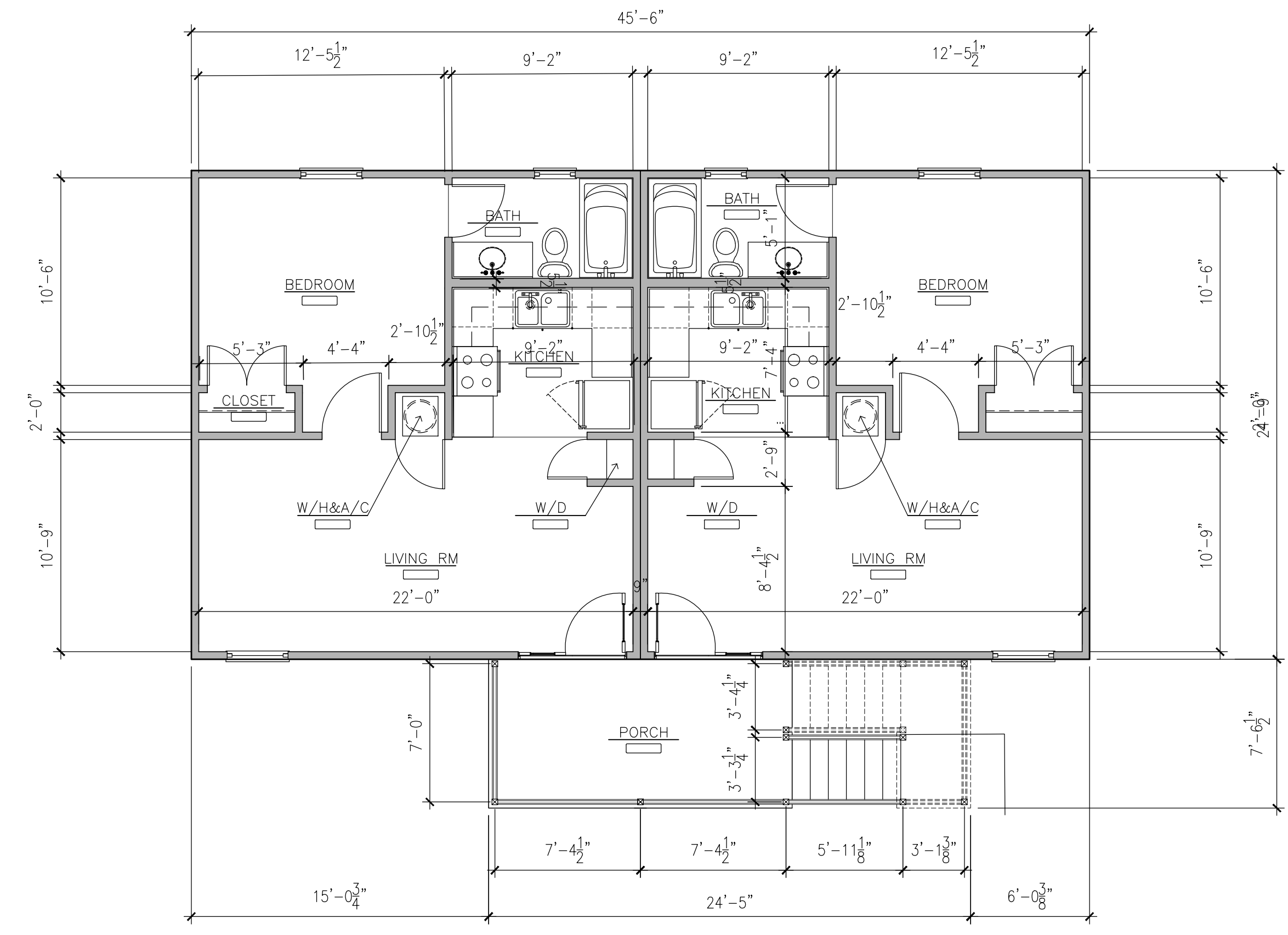
Date: 02.18.14



NORTH ELEVATION
SCALE: 3/16"=1'-0"



EAST ELEVATION
SCALE: 3/16"=1'-0"



4 UNIT FLOOR PLAN
SCALE: 3/16"=1'-0"



WEST ELEVATION
SCALE: 3/16"=1'-0"



SOUTH ELEVATION
SCALE: 3/16"=1'-0"

