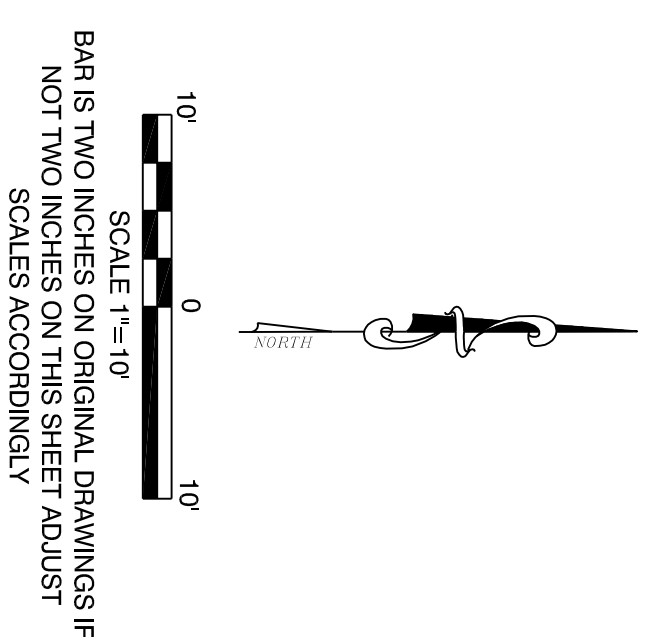
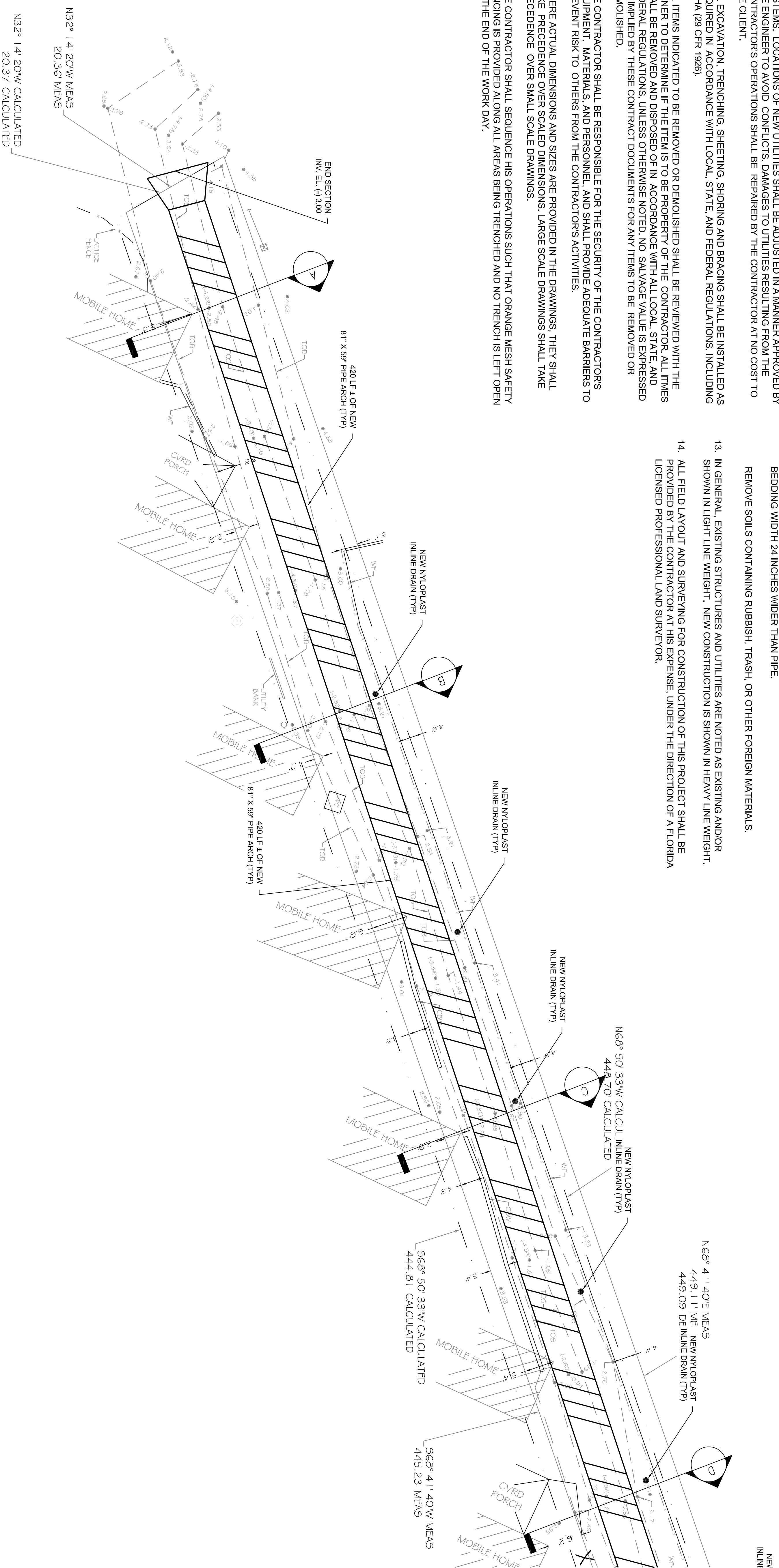


GENERAL NOTES

1. THE CONTRACTOR SHALL REVIEW ALL DRAWINGS AND SPECIFICATIONS AND ADVISE THE ENGINEER OF ANY CONFLICTS OF REPRESENTATION BETWEEN DRAWINGS AND/OR SPECIFICATIONS PRIOR TO COMMENCING WITH CONSTRUCTION.
2. THE CONTRACTOR SHALL FIELD-VERIFY EXISTING CONDITIONS PRIOR TO PERFORMING ANY WORK UNDER THIS CONTRACT AND NOTIFY THE ENGINEER IN WRITING OF ANY DIFFERENCES BEFORE COMMENCING WITH ANY CONSTRUCTION.
3. HORIZONTAL COORDINATES ARE BASED ON FLORIDA STATE PLANE COORDINATE SYSTEM. VERTICAL ELEVATIONS ARE BASED ON NGVD 1929 DATUM.
4. THE LOCATIONS, SIZES, AND ELEVATIONS OF EXISTING UTILITIES AS SHOWN ARE APPROXIMATE. THE CONTRACTOR SHALL COORDINATE WITH THE ENGINEER TO OBTAIN ANY AVAILABLE RECORD DRAWINGS AND SHALL DETERMINE THE EXACT LOCATION AND ELEVATION IN THE FIELD. THE CONTRACTOR SHALL ANTICIPATE THAT SCANNING AND EXCAVATION USING LIGHT EQUIPMENT AND HAND METHODS WILL BE NECESSARY IN AREAS NEAR EXISTING UTILITIES AND STRUCTURES TO AVOID DAMAGING THESE FACILITIES. THE CONTRACTOR SHALL CONTACT BELLSOUTH, THE LOCAL TELEPHONE COMPANY, AND COMCAST, THE LOCAL CABLE TV PROVIDER, TO VERIFY THE LOCATION OF BURIED TELEPHONE AND CABLE TV UTILITIES. NONE HAVE BEEN INDICATED ON THE DRAWINGS. CALL 1-800-432-4770 BEFORE DIGGING OR TRENCHING OPERATIONS BEGIN. CONTRACTOR SHALL ALSO CONTACT KEYS ENERGY TO LOCATE SECONDARY ELECTRIC LINES.
5. THE CONTRACTOR SHALL DETERMINE THE EXACT LOCATION AND ELEVATION IN THE FIELD PRIOR TO INSTALLING ANY NEW WORK THAT CROSSES OR CONNECTS TO EXISTING UTILITY SYSTEMS. LOCATIONS OF NEW UTILITIES SHALL BE ADJUSTED IN A MANNER APPROVED BY THE ENGINEER TO AVOID CONFLICTS, DAMAGES TO UTILITIES RESULTING FROM THE CONTRACTOR'S OPERATIONS SHALL BE REPAIRED BY THE CONTRACTOR AT NO COST TO THE CLIENT.
6. ALL EXCAVATION, TRENCHING, SHEETING, SHORING AND BRACING SHALL BE INSTALLED AS REQUIRED IN ACCORDANCE WITH LOCAL, STATE AND FEDERAL REGULATIONS, INCLUDING OSHA (29 CFR 1926).
7. ALL ITEMS INDICATED TO BE REMOVED OR DEMOLISHED SHALL BE REVIEWED WITH THE OWNER TO DETERMINE IF THE ITEM IS TO BE PROPERTY OF THE CONTRACTOR. ALL ITEMS SHALL BE REMOVED AND DISPOSED OF IN ACCORDANCE WITH ALL LOCAL, STATE, AND FEDERAL REGULATIONS, UNLESS OTHERWISE NOTED. NO SALVAGE VALUE IS EXPRESSED OR IMPLIED BY THESE CONTRACT DOCUMENTS FOR ANY ITEMS TO BE REMOVED OR DEMOLISHED.
8. THE CONTRACTOR SHALL BE RESPONSIBLE FOR THE SECURITY OF THE CONTRACTOR'S EQUIPMENT, MATERIALS, AND PERSONNEL, AND SHALL PROVIDE ADEQUATE BARRIERS TO PREVENT RISK TO OTHERS FROM THE CONTRACTOR'S ACTIVITIES.
9. WHERE ACTUAL DIMENSIONS AND SIZES ARE PROVIDED IN THE DRAWINGS, THEY SHALL TAKE PRECEDENCE OVER SCALED DIMENSIONS. LARGE SCALE DRAWINGS SHALL TAKE PRECEDENCE OVER SMALL SCALE DRAWINGS.
10. THE CONTRACTOR SHALL SEQUENCE HIS OPERATIONS SUCH THAT ORANGE MESH SAFETY FENCING IS PROVIDED ALONG ALL AREAS BEING TRENCHED AND NO TRENCH IS LEFT OPEN AT THE END OF THE WORK DAY.

11. NO CONNECTIONS FOR THE PURPOSE OF OBTAINING WATER SUPPLY DURING CONSTRUCTION SHALL BE MADE TO ANY FIRE HYDRANT OR BLOW-OFF STRUCTURE WITH OUT FIRST OBTAINING A CONSTRUCTION METER FROM THE FLORIDA KEYS AQUEDUCT AUTHORITY.
 12. IF UNSATISFACTORY MATERIAL FOR ADEQUATE BEARING IS ENCOUNTERED AT THE NORMAL SUBGRADE, THE UNSATISFACTORY MATERIAL SHALL BE REMOVED AND REPLACED WITH SUITABLE FOUNDATION STABILIZATION MATERIAL AS SPECIFIED. REMOVE SOILS AND OTHER MATERIALS THAT ARE NOT SUITABLE MATERIALS FOR TRENCH BOTTOM TO SIX INCHES UNDER PIPE, MINIMUM.
- REMOVE WET, YIELDING, OR MUCKY SOILS. REMOVE THE FOLLOWING SOILS:
- a. TYPE CH AND TYPE MH CLASS IV SOILS.
 - b. ALL CLASS V SOILS.
- REMOVE ORGANIC MATERIAL INCLUDING ROOTS, MULCH OR OTHER VEGETABLE MATTER, WHICH IN THE OPINION OF THE ENGINEER WILL RESULT IN UNSATISFACTORY FOUNDATION CONDITIONS.
- REMOVE SOILS CONTAINING COBBLES, BOULDERS OR STONES LARGER THAN ONE AND ONE-HALF INCHES (1-1/2") IN DIAMETER.
- REMOVE LEDGE ROCK AND HARDPAN. REMOVE ROCK AND HARDPAN TO PROVIDE BEDDING WIDTH 24 INCHES WIDER THAN PIPE.
- REMOVE SOILS CONTAINING RUBBISH, TRASH, OR OTHER FOREIGN MATERIALS.
13. IN GENERAL, EXISTING STRUCTURES AND UTILITIES ARE NOTED AS EXISTING AND/OR SHOWN IN LIGHT LINE WEIGHT. NEW CONSTRUCTION IS SHOWN IN HEAVY LINE WEIGHT.
 14. ALL FIELD LAYOUT AND SURVEYING FOR CONSTRUCTION OF THIS PROJECT SHALL BE PROVIDED BY THE CONTRACTOR AT HIS EXPENSE. UNDER THE DIRECTION OF A FLORIDA LICENSED PROFESSIONAL LAND SURVEYOR.



PRELIMINARY PLANS

CITY OF KEY WEST
UTILITY DEPARTMENT
1300 WHITE STREET
KEY WEST, FL. 33040

DONALD AVENUE DITCH
SITE PLAN

REVISIONS:	ORIGINAL:	MAY 2017
1		
2		
3		
4		
5		
6		

ALLEN E. PEREZ, P.E.
 Florida P.E. NO. 51468
 May 31, 2017

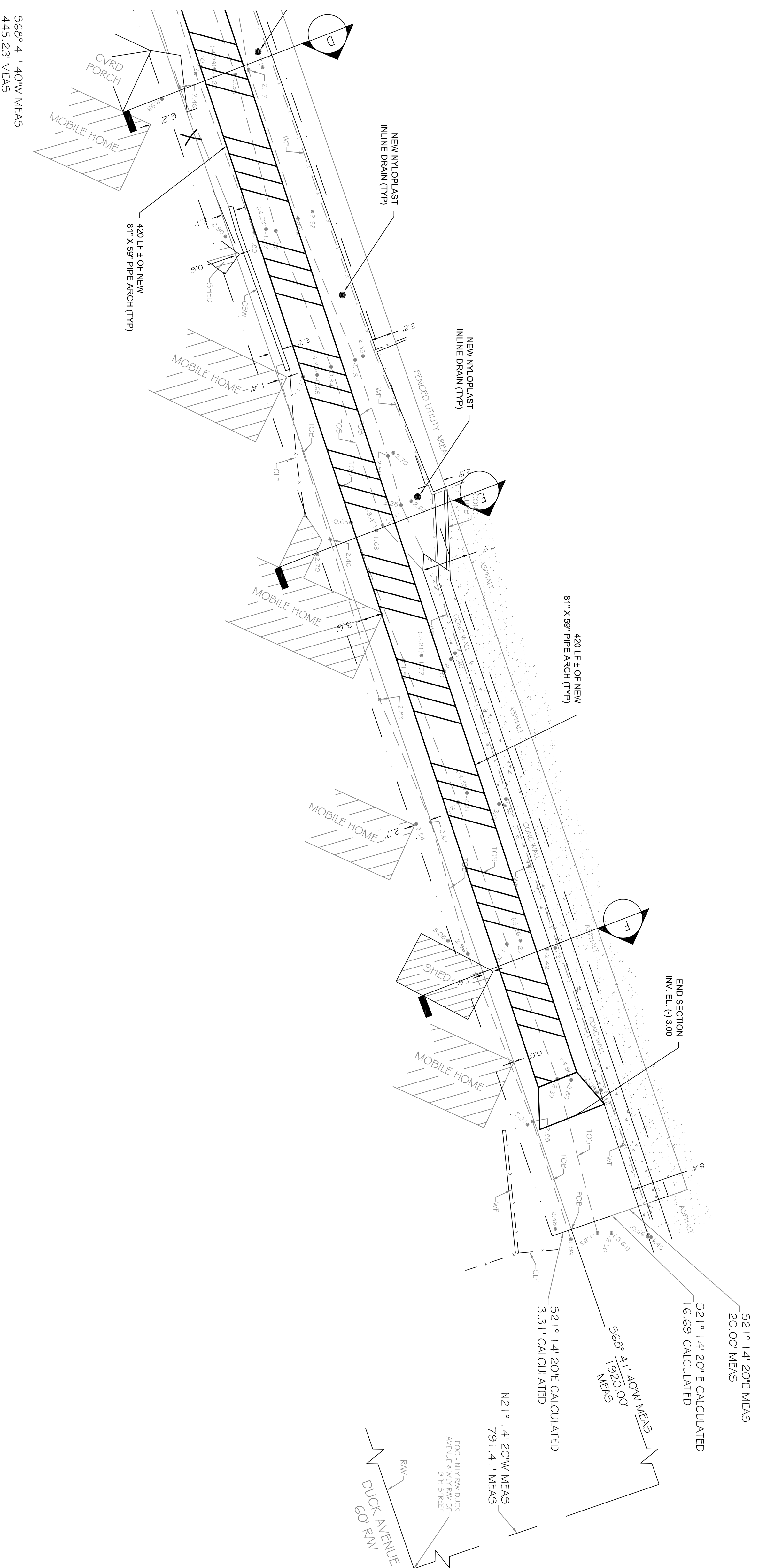
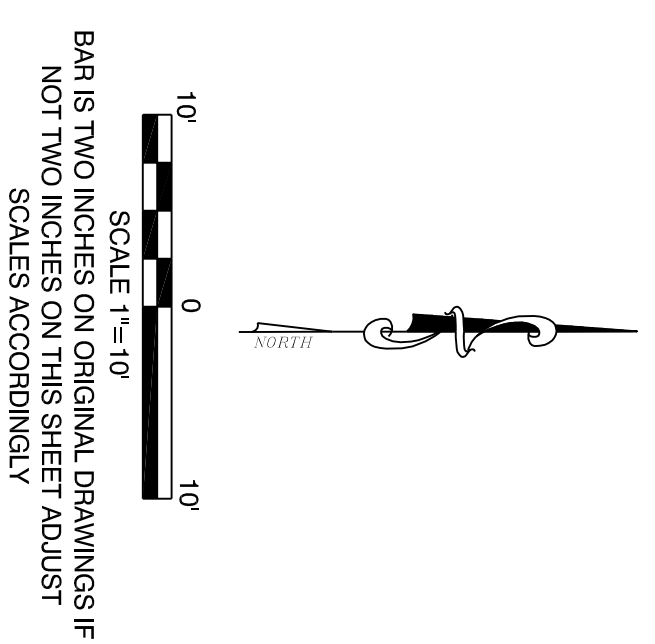
CIVIL ENGINEERING • REGULATORY PERMITTING • CONSTRUCTION MANAGEMENT



PEREZ ENGINEERING & DEVELOPMENT, INC.
 CERTIFICATE OF AUTHORIZATION NO. 8579

KEY WEST OFFICE
 1010 EAST KENNEDY DRIVE, SUITE 201
 KEY WEST, FLORIDA 33040
 TEL: (305) 293-9440 FAX: (305) 296-0243

JOB NO. 171019
 DRAWN AEP
 DESIGNED AEP
 CHECKED AEP
 QC SHEET C-1



PRELIMINARY PLANS

CITY OF KEY WEST
UTILITY DEPARTMENT
 1300 WHITE STREET
 KEY WEST, FL. 33040

DONALD AVENUE DITCH
 SITE PLAN

REVISIONS:	ORIGINAL: MAY 2017
1	
2	
3	
4	
5	
6	

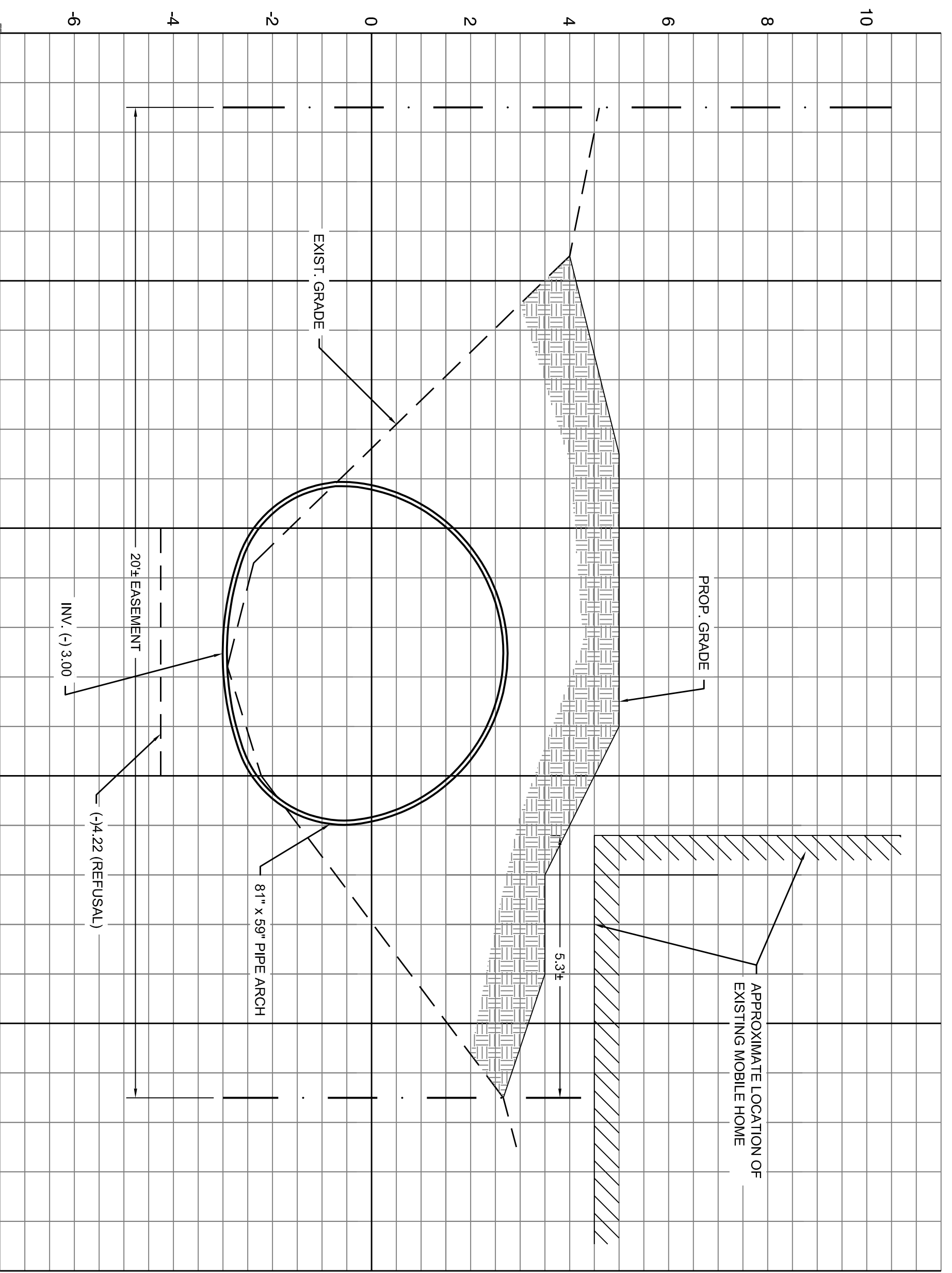
ALLEN E. PEREZ, P.E.
 Florida P.E. NO. 51468
 May 31, 2017

CIVIL ENGINEERING • REGULATORY PERMITTING • CONSTRUCTION MANAGEMENT

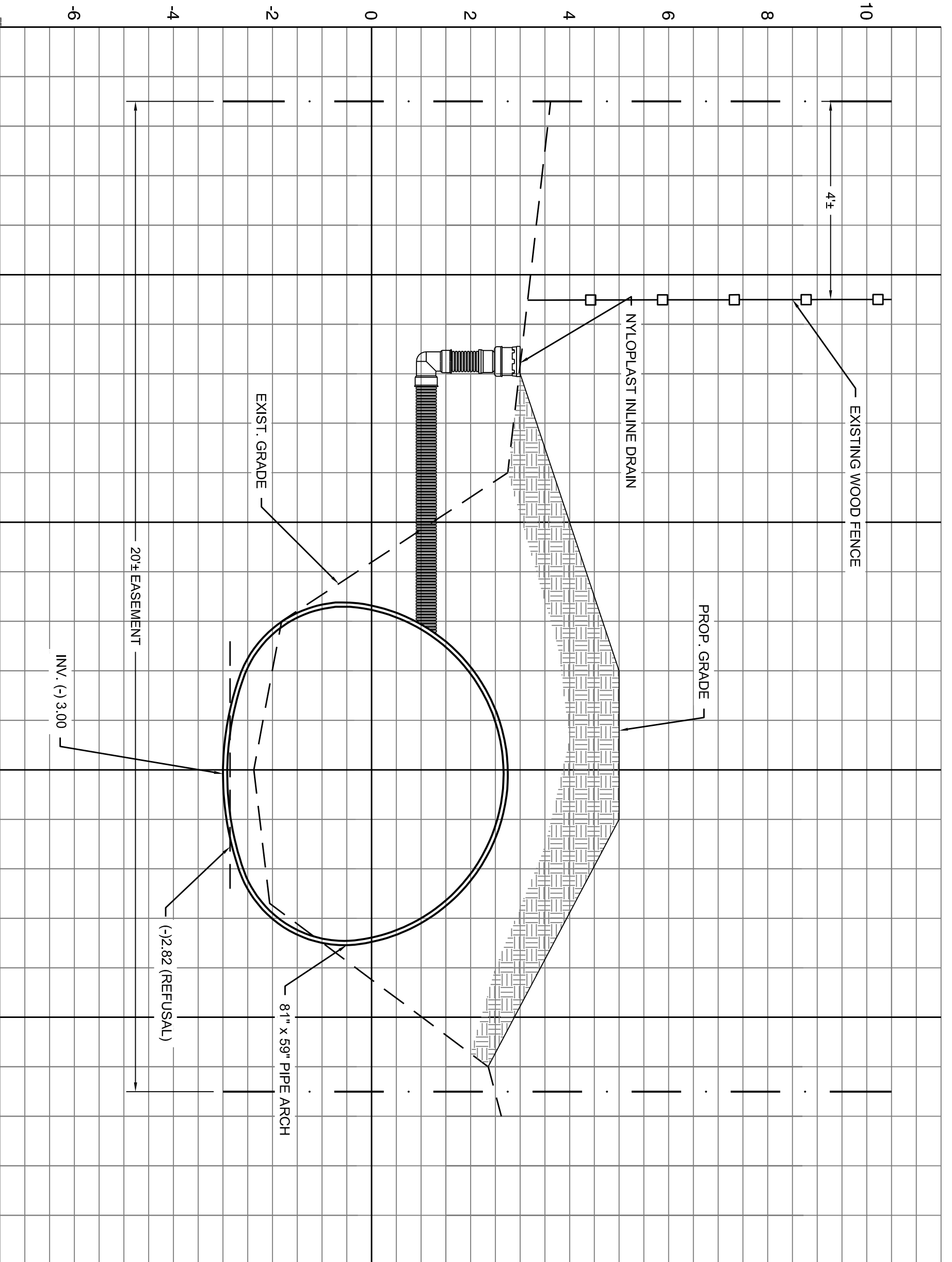
PEREZ ENGINEERING & DEVELOPMENT, INC.
 CERTIFICATE OF AUTHORIZATION No. B579

KEY WEST OFFICE
 1010 EAST KENNEDY DRIVE, SUITE 201
 KEY WEST, FLORIDA 33040
 TEL: (305) 293-9440 FAX: (305) 296-0243

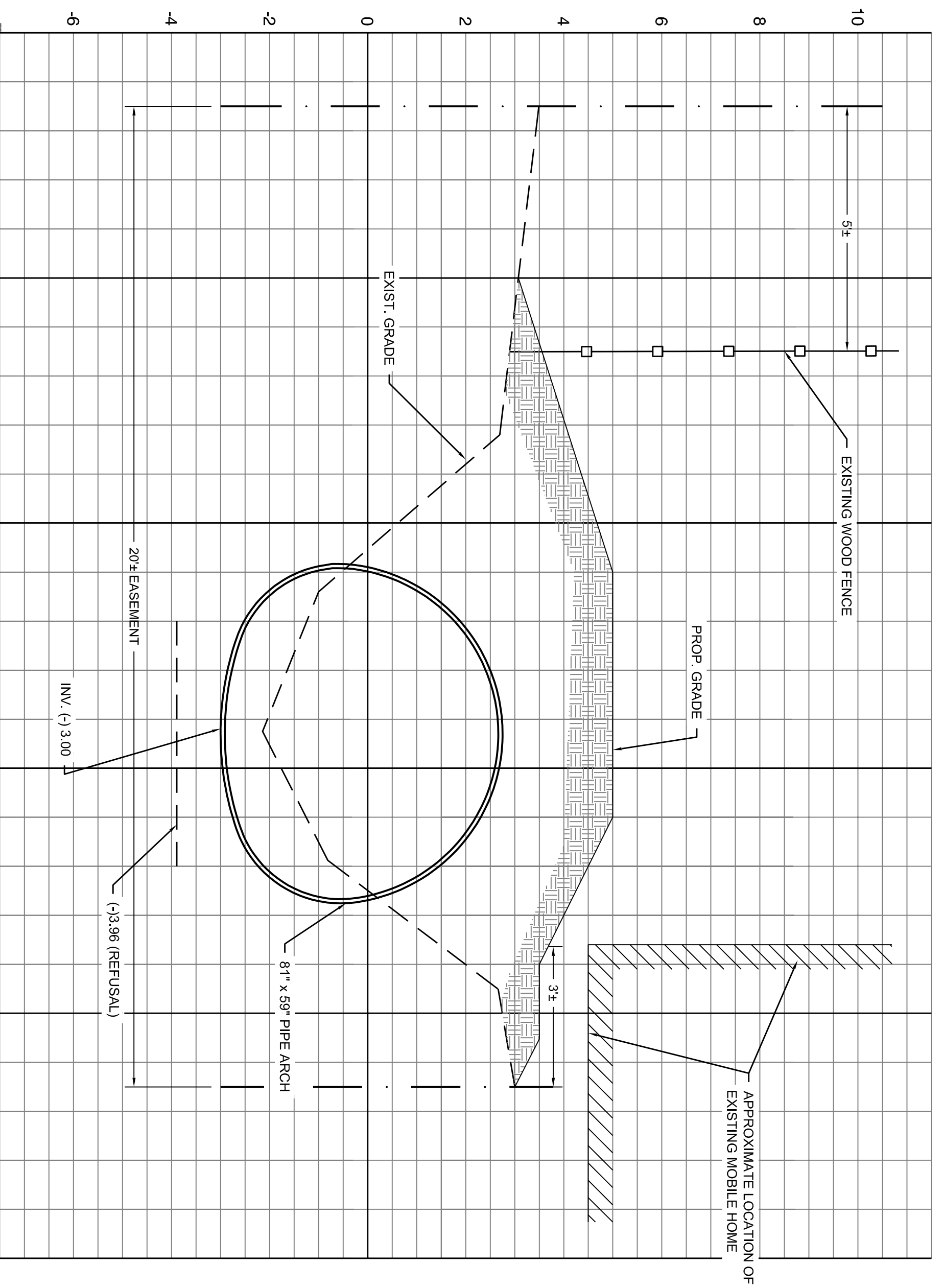
JOB NO. 171019
 DRAWN AEP
 DESIGNED AEP
 CHECKED AEP
 DC
 SHEET C-2



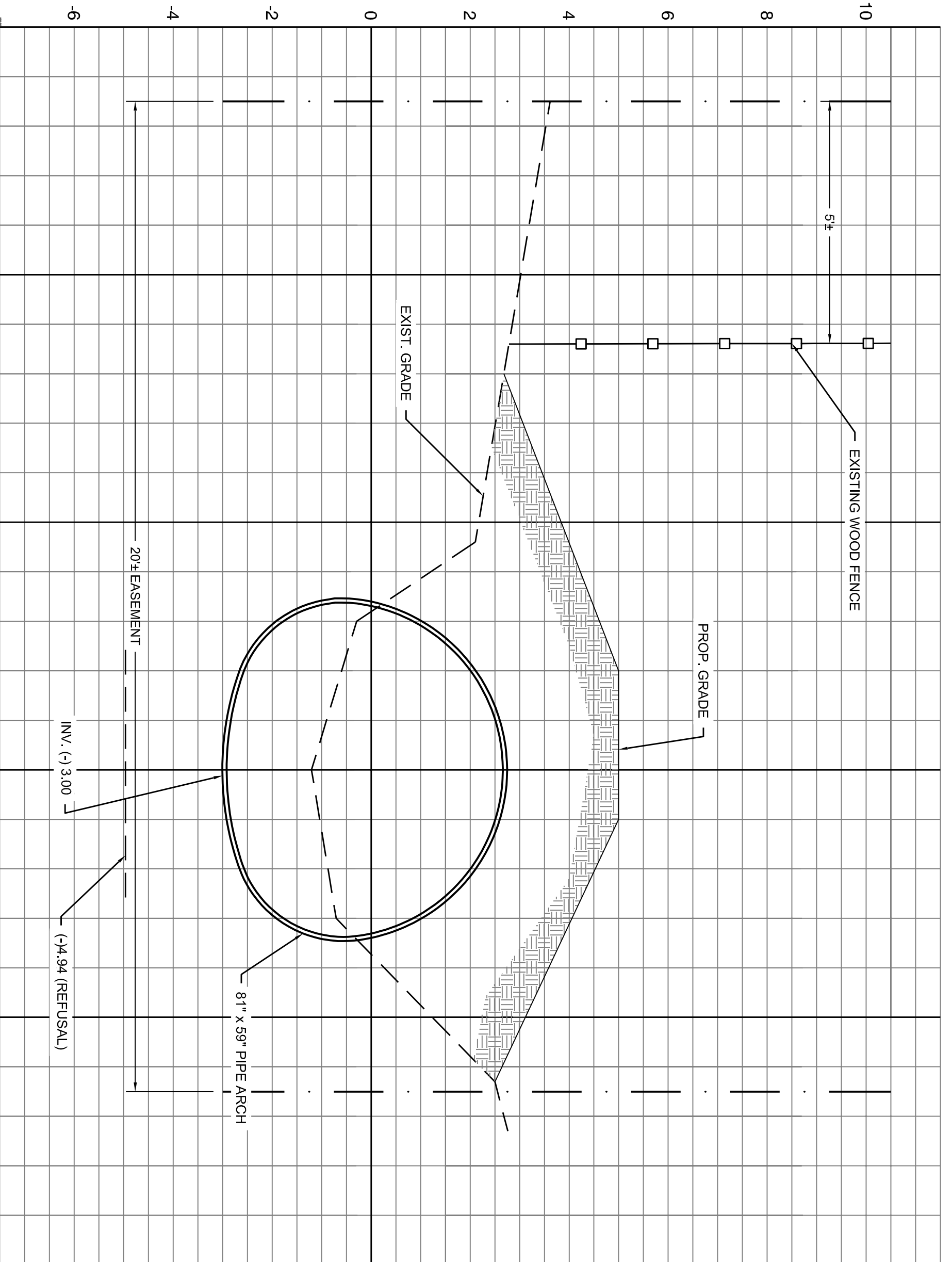
A
 1" = 20' HORIZ.
 1" = 2' VERT.



B
 1" = 20' HORIZ.
 1" = 2' VERT.



C
 1" = 20' HORIZ.
 1" = 2' VERT.



D
 1" = 20' HORIZ.
 1" = 2' VERT.

PRELIMINARY PLANS

REVISIONS:	ORIGINAL: MAY 2017
1	
2	
3	
4	
5	
6	

ALLEN E. PEREZ, P.E.
 Florida P.E. NO. 51468
 May 31, 2017

CIVIL ENGINEERING • REGULATORY PERMITTING • CONSTRUCTION MANAGEMENT



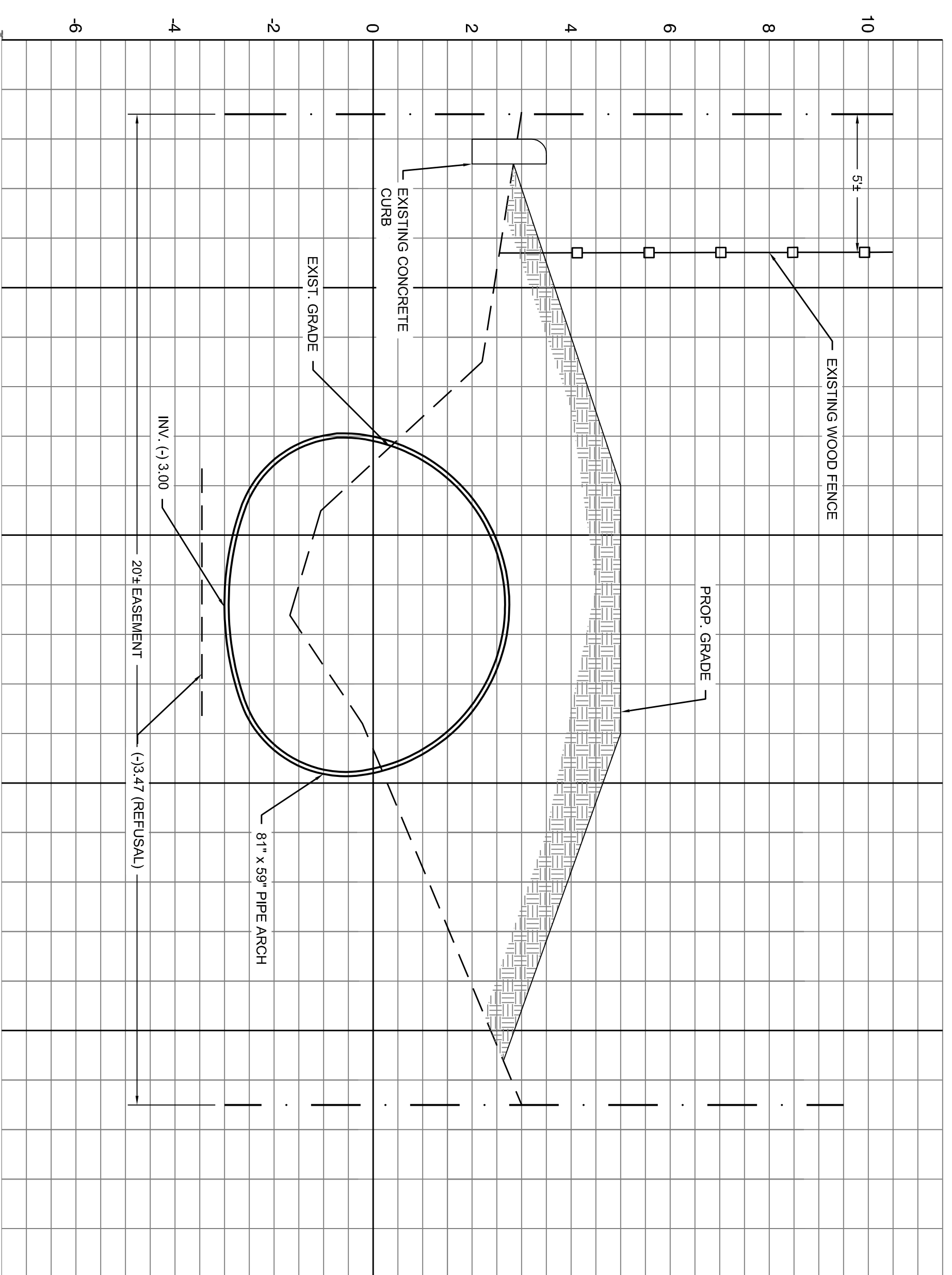
PEREZ ENGINEERING & DEVELOPMENT, INC.
 CERTIFICATE OF AUTHORIZATION No. 8579

KEY WEST OFFICE
 1010 EAST KENNEDY DRIVE, SUITE 201
 KEY WEST, FLORIDA 33040
 TEL: (305) 293-9440 FAX: (305) 296-0243

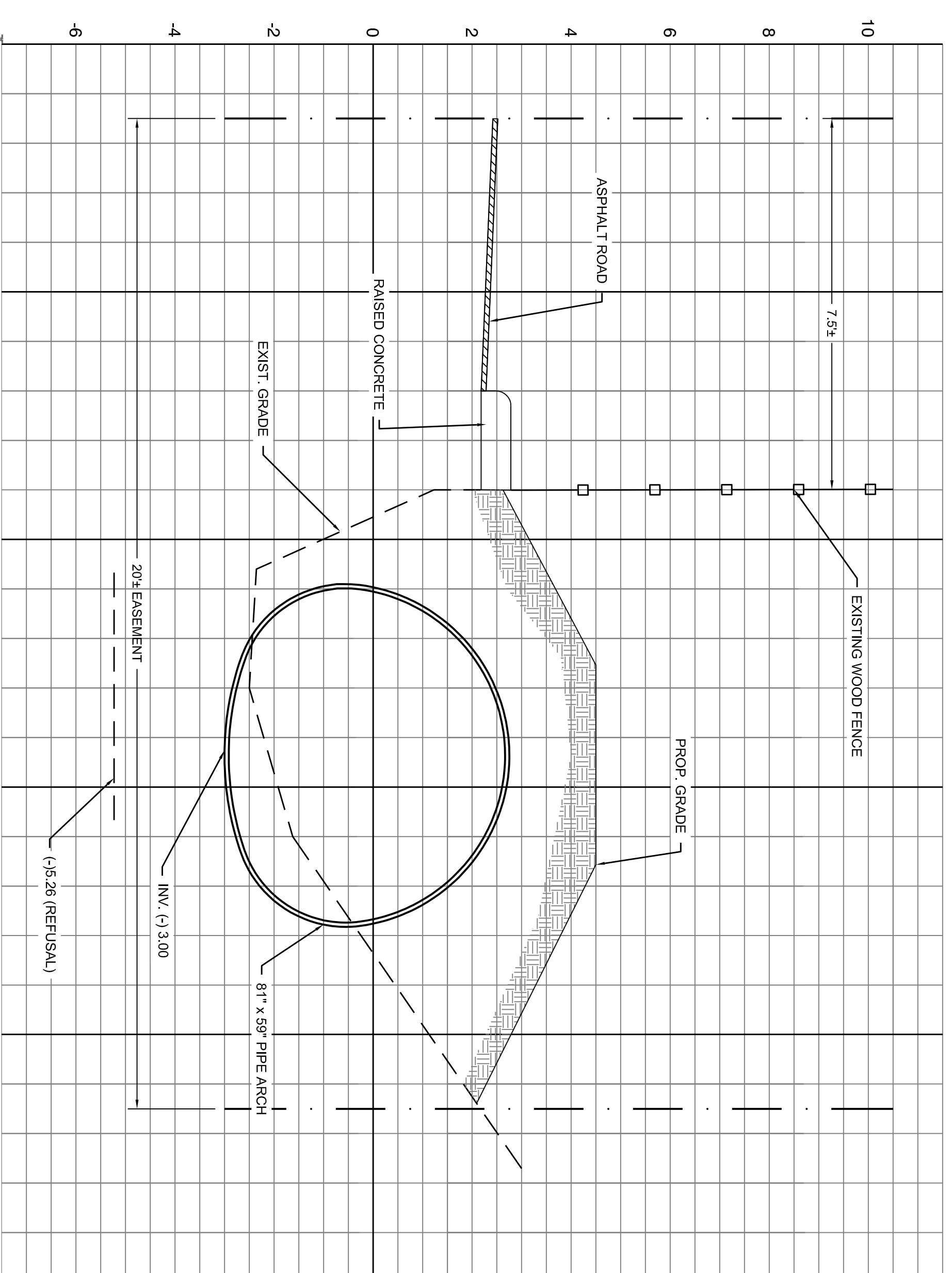
JOB NO. 171019
 DRAWN AEP
 DESIGNED AEP
 CHECKED AEP
 QC
 SHEET

CITY OF KEY WEST
UTILITY DEPARTMENT
 1300 WHITE STREET
 KEY WEST, FL. 33040

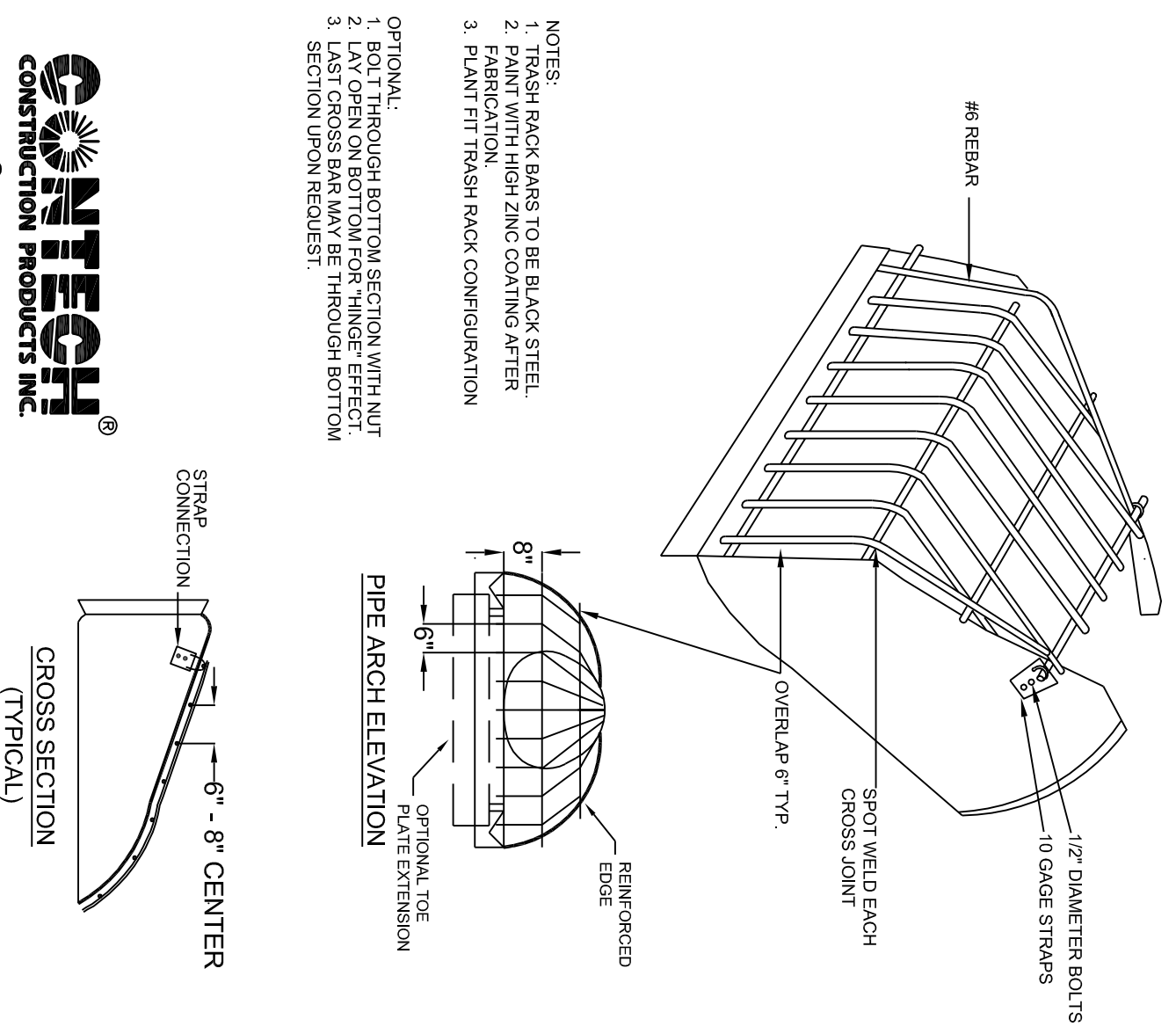
DONALD AVENUE DITCH
PLAN SECTIONS



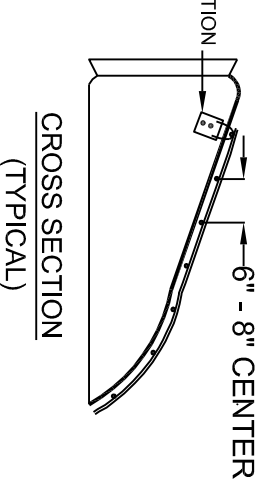
E
 1" = 20' HORIZ.
 1" = 2' VERT.
 Cross Section E



F
 1" = 20' HORIZ.
 1" = 2' VERT.
 Cross Section F



- NOTES:
 1. TRASH RACK BARS TO BE BLACK STEEL.
 2. FABRICATION TO BE IN ACCORDANCE WITH PLAN.
 3. PLANT FIT TRASH RACK CONFIGURATION.



1
 Trash Rack for End Sections

REVISIONS:

1	ORIGINAL: MAY 2017
2	
3	
4	
5	
6	

ALLEN E. PEREZ, P.E.
 Florida P.E. NO. 51468
 May 31, 2017

CIVIL ENGINEERING • REGULATORY PERMITTING • CONSTRUCTION MANAGEMENT

PEREZ ENGINEERING & DEVELOPMENT, INC.
 CERTIFICATE OF AUTHORIZATION No. B579

KEY WEST OFFICE
 1010 EAST KENNEDY DRIVE, SUITE 201
 KEY WEST, FLORIDA 33040
 TEL: (305) 293-9440 FAX: (305) 296-0243

CITY OF KEY WEST
UTILITY DEPARTMENT
 1300 WHITE STREET
 KEY WEST, FL. 33040

DONALD AVENUE DITCH

PLAN SECTIONS AND DETAILS

JOB NO. 171019
 DRAWN AEP
 DESIGNED AEP
 CHECKED AEP
 QC

PRELIMINARY PLANS