

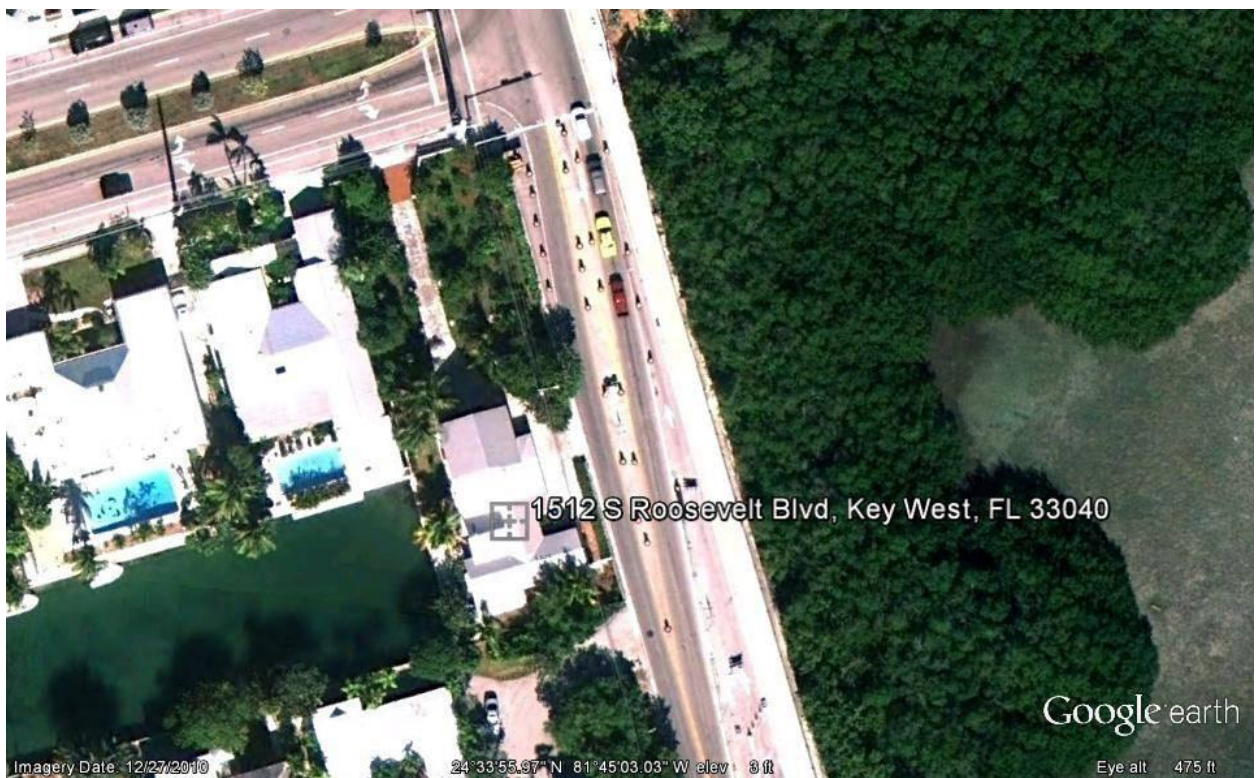
MEMORANDUM

DATE: December 22, 2011

RE: 1512 S. Roosevelt Blvd

FROM: Karen DeMaria, Interim Urban Forestry Manager, City of Key West

On December 12, 2011, I received a phone call about the improper trimming of a tree at the corner of Go Lane and South Roosevelt Blvd (A1A). An inspection of the area found two native trees had been cut, a gumbo limbo and a sea grape tree.



1512 S. Roosevelt Blvd cont...page 2

Google Earth Street View: Photo taken before trees cut.



It appears that a large gumbo limbo and a large sea grape tree were severely trimmed. The gumbo limbo has been hatracked and the sea grape has been cut to a hedge level (therefore, removing all the canopy and most of the tree structure).

Violation to the City Tree Ordinance: Sec 110-256 Tree Abuse

B (3) Cutting upon any tree which permanently reduces the function of the tree or causes it to go into shock.

B (4) Cutting upon a tree which destroys its natural shape.

B(5) Hatracking as defined in section 110-252.

1512 S. Roosevelt Blvd cont...page 3

Photo of tree taken December 12, 2011:





