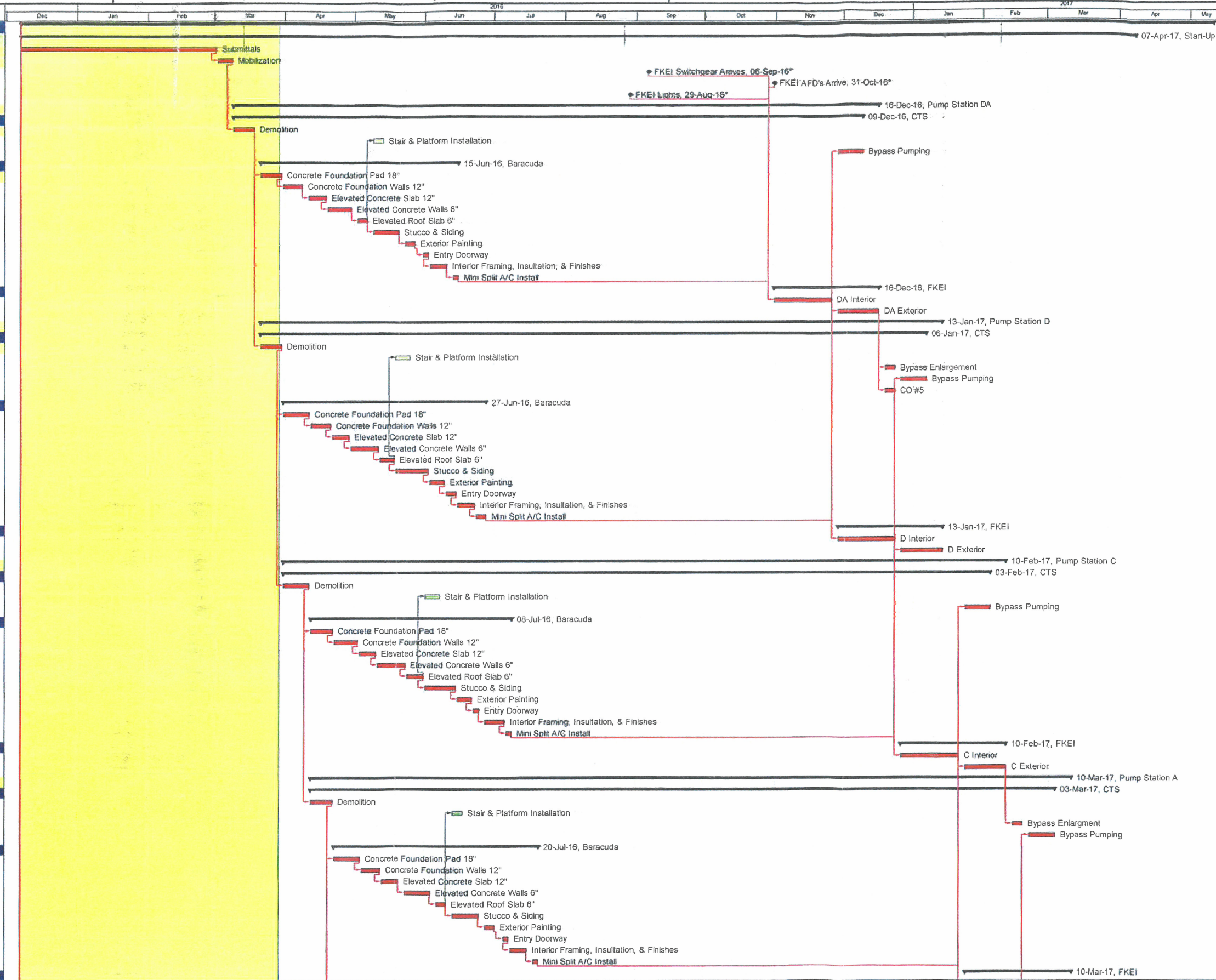
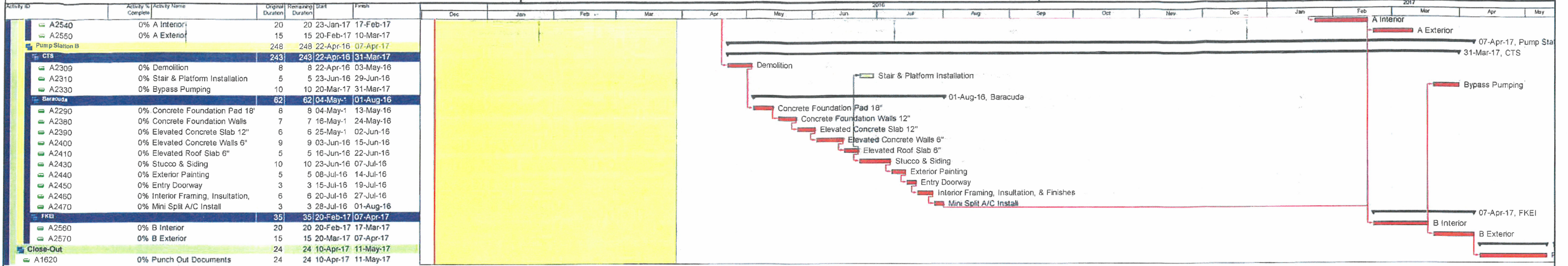


Activity ID	Activity % Complete	Activity Name	Original Duration	Remaining Duration	Start	Finish
<b>VFD Upgrades</b>			<b>369</b>	<b>369</b>	<b>07-Dec-15</b>	<b>11-May-17</b>
<b>Start-Up</b>			<b>345</b>	<b>345</b>	<b>07-Dec-15</b>	<b>07-Apr-17</b>
A1000	0%	Submittals	60	60	07-Dec-15	01-Mar-16
A1010	0%	Mobilization	5	5	02-Mar-16	08-Mar-16
A1060	0%	FKEI Switchgear Arrives	0	0	06-Sep-1	
A1080	0%	FKEI AFD's Arrive	0	0	31-Oct-1	
A1130	0%	FKEI Lights	0	0	29-Aug-1	
<b>Pump Station DA</b>			<b>200</b>	<b>200</b>	<b>09-Mar-16</b>	<b>16-Dec-16</b>
<b>CTS</b>			<b>195</b>	<b>195</b>	<b>09-Mar-16</b>	<b>09-Dec-16</b>
A1069	0%	Demolition	8	8	09-Mar-16	18-Mar-16
A1070	0%	Stair & Platform Installation	5	5	09-May-1	13-May-16
A1090	0%	Bypass Pumping	10	10	28-Nov-16	09-Dec-16
<b>Baracuda</b>			<b>62</b>	<b>62</b>	<b>21-Mar-16</b>	<b>15-Jun-16</b>
A1040	0%	Concrete Foundation Pad 18"	8	8	21-Mar-16	30-Mar-16
A1041	0%	Concrete Foundation Walls 12"	7	7	31-Mar-16	08-Apr-16
A1042	0%	Elevated Concrete Slab 12"	6	6	11-Apr-16	18-Apr-16
A1043	0%	Elevated Concrete Walls 6"	9	9	19-Apr-16	29-Apr-16
A1044	0%	Elevated Roof Slab 6"	5	5	02-May-1	06-May-16
A1054	0%	Stucco & Siding	10	10	09-May-1	20-May-16
A1064	0%	Exterior Painting	5	5	23-May-1	27-May-16
A1074	0%	Entry Doorway	3	3	31-May-1	02-Jun-16
A1084	0%	Interior Framing, Insulation,	6	6	03-Jun-16	10-Jun-16
A1094	0%	Mini Split A/C Install	3	3	13-Jun-16	15-Jun-16
<b>FKEI</b>			<b>35</b>	<b>35</b>	<b>31-Oct-16</b>	<b>16-Dec-16</b>
A2480	0%	DA Interior	20	20	31-Oct-16	25-Nov-16
A2490	0%	DA Exterior	15	15	28-Nov-16	16-Dec-16
<b>Pump Station D</b>			<b>212</b>	<b>212</b>	<b>21-Mar-16</b>	<b>13-Jan-17</b>
<b>CTS</b>			<b>207</b>	<b>207</b>	<b>21-Mar-16</b>	<b>06-Jan-17</b>
A1079	0%	Demolition	8	8	21-Mar-16	30-Mar-16
A1680	0%	Stair & Platform Installation	5	5	19-May-1	25-May-16
A1690	0%	Bypass Enlargement	5	5	19-Dec-16	23-Dec-16
A1700	0%	Bypass Pumping	10	10	26-Dec-16	06-Jan-17
A1701	0%	CO #5	5	5	19-Dec-16	23-Dec-16
<b>Baracuda</b>			<b>62</b>	<b>62</b>	<b>31-Mar-16</b>	<b>27-Jun-16</b>
A1660	0%	Concrete Foundation Pad 18"	8	8	31-Mar-16	11-Apr-16
A1750	0%	Concrete Foundation Walls 12"	7	7	12-Apr-16	20-Apr-16
A1760	0%	Elevated Concrete Slab 12"	6	6	21-Apr-16	28-Apr-16
A1770	0%	Elevated Concrete Walls 6"	9	9	29-Apr-16	11-May-16
A1780	0%	Elevated Roof Slab 6"	5	5	12-May-1	18-May-16
A1800	0%	Stucco & Siding	10	10	19-May-1	02-Jun-16
A1810	0%	Exterior Painting	5	5	03-Jun-16	09-Jun-16
A1820	0%	Entry Doorway	3	3	10-Jun-16	14-Jun-16
A1830	0%	Interior Framing, Insulation,	6	6	15-Jun-16	22-Jun-16
A1840	0%	Mini Split A/C Install	3	3	23-Jun-16	27-Jun-16
<b>FKEI</b>			<b>35</b>	<b>35</b>	<b>28-Nov-16</b>	<b>13-Jan-17</b>
A2500	0%	D Interior	20	20	28-Nov-16	23-Dec-16
A2510	0%	D Exterior	15	15	26-Dec-16	13-Jan-17
<b>Pump Station C</b>			<b>224</b>	<b>224</b>	<b>31-Mar-16</b>	<b>10-Feb-17</b>
<b>CTS</b>			<b>219</b>	<b>219</b>	<b>31-Mar-16</b>	<b>03-Feb-17</b>
A1889	0%	Demolition	8	8	31-Mar-16	11-Apr-16
A1890	0%	Stair & Platform Installation	5	5	01-Jun-16	07-Jun-16
A1910	0%	Bypass Pumping	10	10	23-Jan-17	03-Feb-17
<b>Baracuda</b>			<b>62</b>	<b>62</b>	<b>12-Apr-16</b>	<b>08-Jul-16</b>
A1870	0%	Concrete Foundation Pad 18"	8	8	12-Apr-16	21-Apr-16
A1960	0%	Concrete Foundation Walls 12"	7	7	22-Apr-16	02-May-16
A1970	0%	Elevated Concrete Slab 12"	6	6	03-May-1	10-May-16
A1980	0%	Elevated Concrete Walls 6"	9	9	11-May-1	23-May-16
A1990	0%	Elevated Roof Slab 6"	5	5	24-May-1	31-May-16
A2010	0%	Stucco & Siding	10	10	01-Jun-16	14-Jun-16
A2020	0%	Exterior Painting	5	5	15-Jun-16	21-Jun-16
A2030	0%	Entry Doorway	3	3	22-Jun-16	24-Jun-16
A2040	0%	Interior Framing, Insulation,	6	6	27-Jun-16	05-Jul-16
A2050	0%	Mini Split A/C Install	3	3	06-Jul-16	08-Jul-16
<b>FKEI</b>			<b>35</b>	<b>35</b>	<b>26-Dec-16</b>	<b>10-Feb-17</b>
A2520	0%	C Interior	20	20	26-Dec-16	20-Jan-17
A2530	0%	C Exterior	15	15	23-Jan-17	10-Feb-17
<b>Pump Station A</b>			<b>236</b>	<b>236</b>	<b>12-Apr-16</b>	<b>10-Mar-17</b>
<b>CTS</b>			<b>231</b>	<b>231</b>	<b>12-Apr-16</b>	<b>03-Mar-17</b>
A2099	0%	Demolition	8	8	12-Apr-16	21-Apr-16
A2100	0%	Stair & Platform Installation	5	5	13-Jun-16	17-Jun-16
A2119	0%	Bypass Enlargement	5	5	13-Feb-17	17-Feb-17
A2120	0%	Bypass Pumping	10	10	20-Feb-17	03-Mar-17
<b>Baracuda</b>			<b>62</b>	<b>62</b>	<b>22-Apr-16</b>	<b>20-Jul-16</b>
A2080	0%	Concrete Foundation Pad 18"	8	8	22-Apr-16	03-May-16
A2170	0%	Concrete Foundation Walls 12"	7	7	04-May-1	12-May-16
A2180	0%	Elevated Concrete Slab 12"	6	6	13-May-1	20-May-16
A2190	0%	Elevated Concrete Walls 6"	9	9	23-May-1	03-Jun-16
A2200	0%	Elevated Roof Slab 6"	5	5	06-Jun-16	10-Jun-16
A2220	0%	Stucco & Siding	10	10	13-Jun-16	24-Jun-16
A2230	0%	Exterior Painting	5	5	27-Jun-16	01-Jul-16
A2240	0%	Entry Doorway	3	3	05-Jul-16	07-Jul-16
A2250	0%	Interior Framing, Insulation,	6	6	08-Jul-16	15-Jul-16
A2260	0%	Mini Split A/C Install	3	3	18-Jul-16	20-Jul-16
<b>FKEI</b>			<b>35</b>	<b>35</b>	<b>23-Jan-17</b>	<b>10-Mar-17</b>



█ Actual Level of Effort   
 █ Remaining Work   
 ◆ Milestone  
█ Actual Work   
 █ Critical Remaining Work   
 ▼ summary





Actual Level of Effort    
  Remaining Work    
  Milestone    
  Actual Work    
  Critical Remaining Work    
  summary

