

Project Update



Truman Waterfront Park

History

- Master Plan Developed - Resolution 12-065
- LRA Approved Master Plan - Resolutions 12-129 & 12-285
- Phase I Design - LRA Resolution 14-095
- Full Build-out of Master Plan Estimate – \$58.5M (2013)

Milestones

- Phase I Design Commenced - May 2014
- NAS Key West Concept Plan Acceptance - August 2014
- 50% Design Submittal - September 2014
- Sub-Phasing Plan Developed – November 2014
- Navy and FDEP Acceptance of Soil Management Plan – March 2015
- FDEP Memorandum for Ft. Zachary Entrance – March 2015

Milestones

- Navy Concurrence with Outer Mole Entry Control Point and State Park Entrance – April 2015
- 90% Design Submittal - April 2015
- SFWMD Stormwater Permit Submittal – May 2015
- 100% Construction Document Submittal – July 2015
- Bidding – September 2015
- Commission Approval of Phase IA Construction - October 2015
- Commence Phase IA NTP 1 Construction – November 2015

Concept Plan



Fort Zachary Taylor Park

Mole Pier

Future Fort Access

Amphitheater

NOAA Dock Facilities

USCGC Ingham

Pedestrian Promenade

Turn Around

30' Navy Property Setback

KWPD Horse Stables

Public Parking - 67 spaces

Transit Stop

8' wide Bike Path

Scooter Parking 12 spaces

Transit Stop

Community Center

NOAA Employee Parking

NOAA Facility (existing)

Community Playgrounds

Multi Use Recreation Field

Boat Launch

Commissioner Merrill McCoy Public Gardens

Proposed Pedestrian/Bicycle Bridge

20' Setback

30' Setback

Future Pedestrian Access

Future Vehicular Access

US Navy Base

Development Site

Navy Access (30' width)

Scooter Parking - 12 spaces

Public Parking - 66 spaces

Building 103

EDDIE ST
SOUTHARDS ST
AGLE ST
GEPALDING ST
FORT ST
PETERSONS ST

Transit Stop

Public Parking - 92 spaces

Scooter Parking - 12 spaces

Pedestrian Access

LEGEND

- Navy Property
- Future Development Site
- State Property



This site is subject to the Code of Federal Regulations Citation CFR 334.610, restricting access to any person and/or any vessel other than Government-owned vessels to the Truman Harbor.

Phase I

- Phase I Design Commenced May 2014 – LRA Resolution 14-095
 - Park Infrastructure
 - Central Park Area
 - North Park Area
 - Fort Zachary Entrance / Navy Entry Control Point / Mole Access
 - Multi-Purpose Field
 - Community Center
 - Horse Stables

Phase I

- Staff Goal to Maximize Park Development with Available and Projected Funding
- Project Sub-Phases and “Notice to Proceeds” (NTP) based on 50% Drawings Cost Estimate
- To Match Funding, Park to be Developed as Phase IA with Multiple NTPs and Phase IB

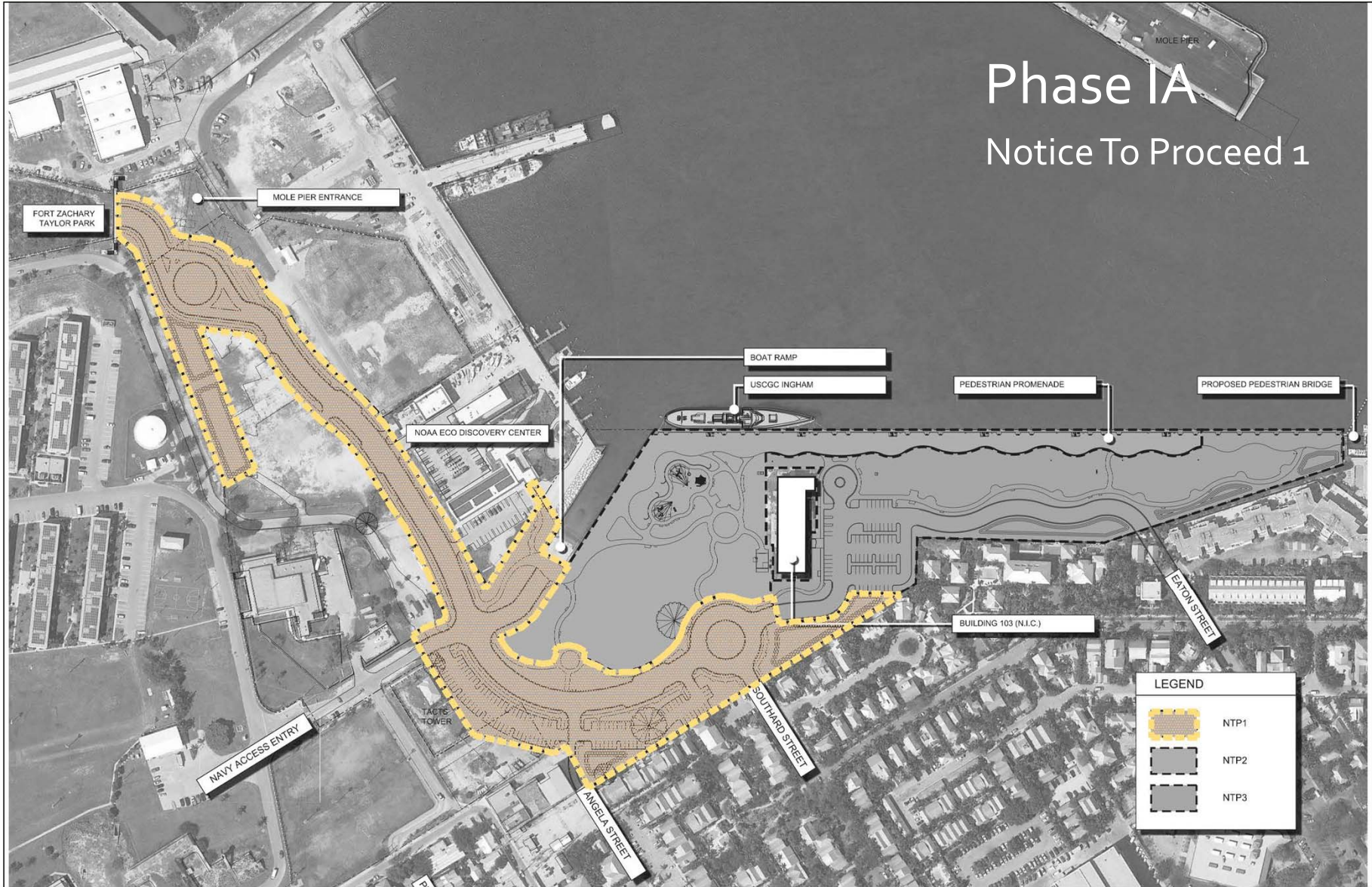
Phase IA



ENVIRONMENTAL LAND USE CONTROLS NOTE:
PRIOR TO ANY AND ALL CONSTRUCTION ACTIVITIES, THE CONTRACTOR IS RESPONSIBLE FOR VERIFYING IF LOCATION OF CONSTRUCTION ACTIVITIES ARE SUBJECT TO ENVIRONMENTAL LAND USE CONTROLS (LUC). ANY AND ALL

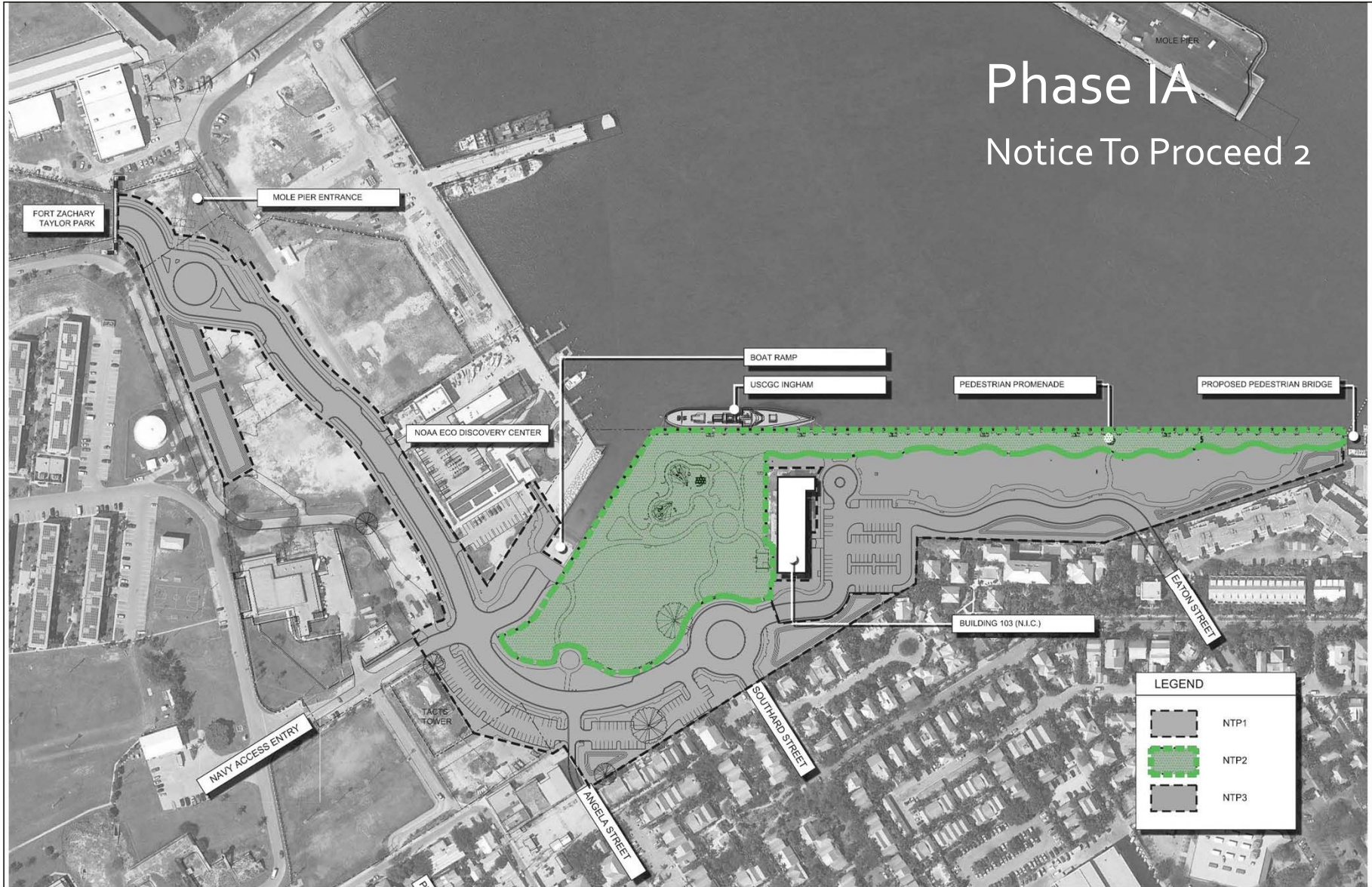
Phase IA

Notice To Proceed 1



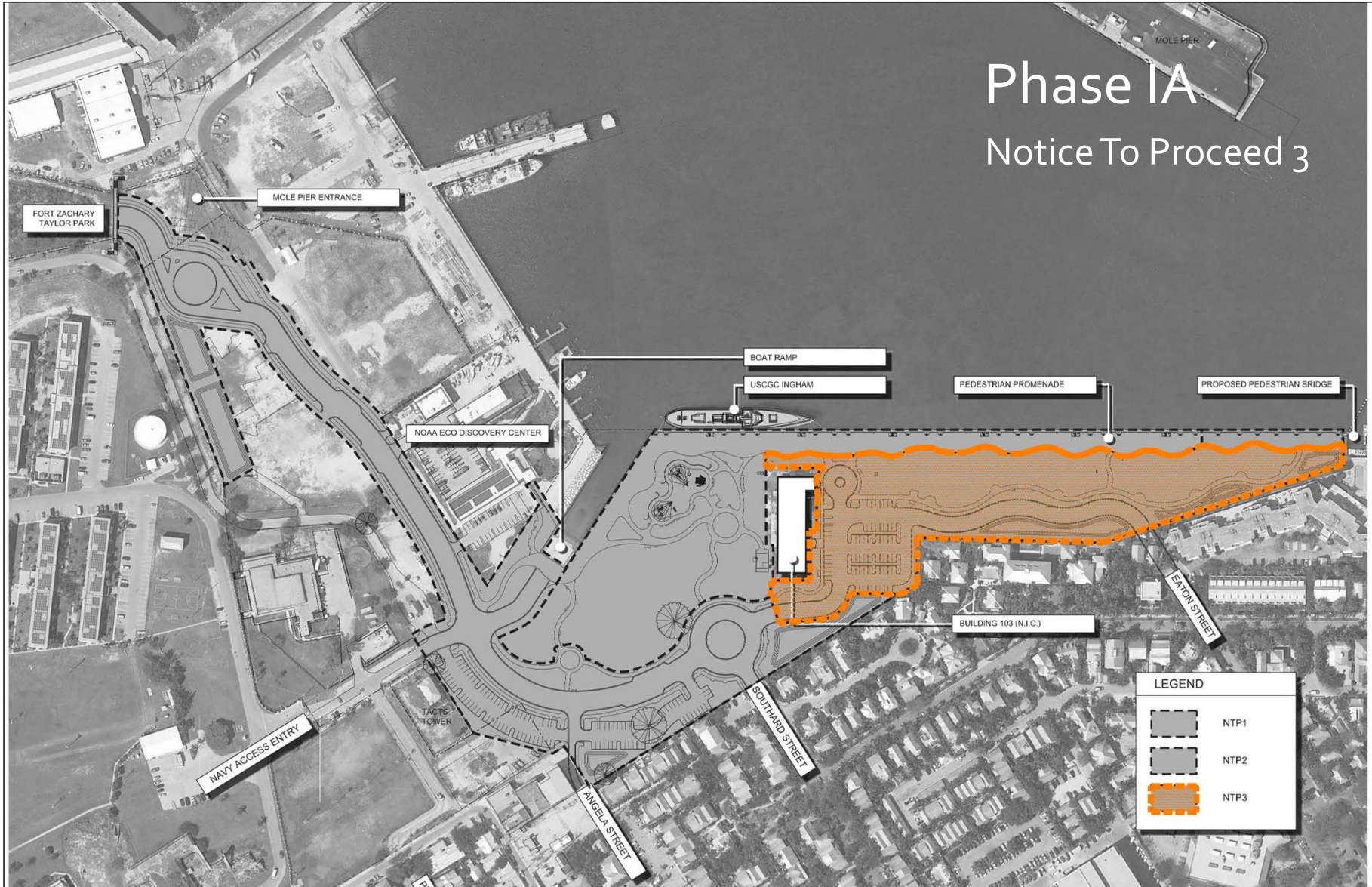
Phase IA

Notice To Proceed 2



Phase IA

Notice To Proceed 3



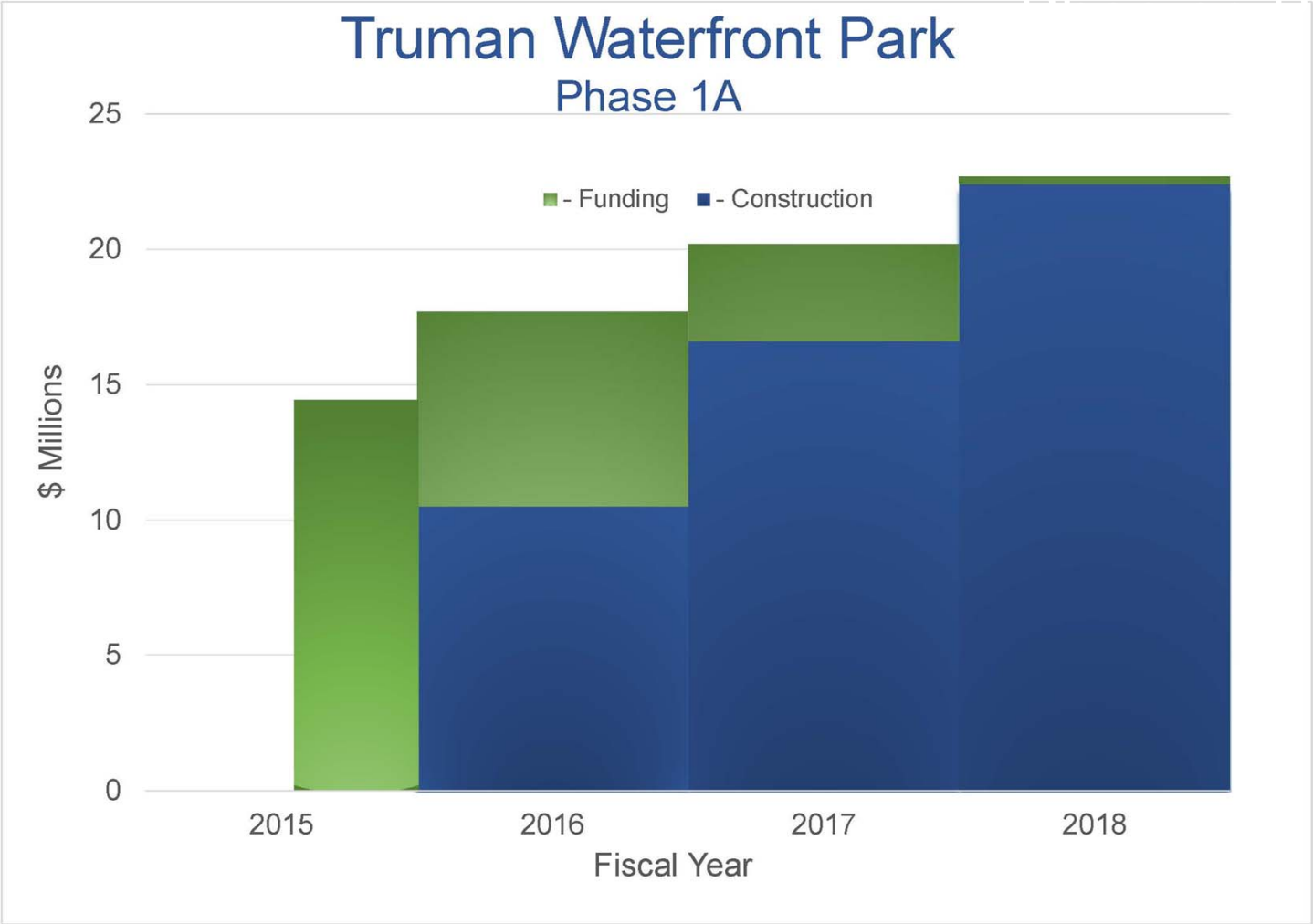
Phase I

- Phase IA Design Plans are at 90% Complete Stage
- Phase IB Design Plans are 75% Complete
 - Multi-Purpose Field
 - Community Center
 - Horse Stables
- Phase IB On Hold due to Available Funding
- Continue to Utilize Former Galley for PAL Activities

Cost vs. Funding

- Phase IA Construction Sequencing
 - Based on 90% Cost Estimate
 - Annual \$2.5M City Funding

Truman Waterfront Park Phase 1A



Construction Schedule

- Phase IA

- Bid Documents Complete & Advertise August 2015
- Bid Opening September 2015
- Commission Approval to Award October 2015
- Construction
 - NTP 1 Nov. 2015 - 2016
 - NTP 2 2016 - 2017
 - NTP 3 2018 – 2019
- Phase IA Complete 2019

Questions



Truman Waterfront Park