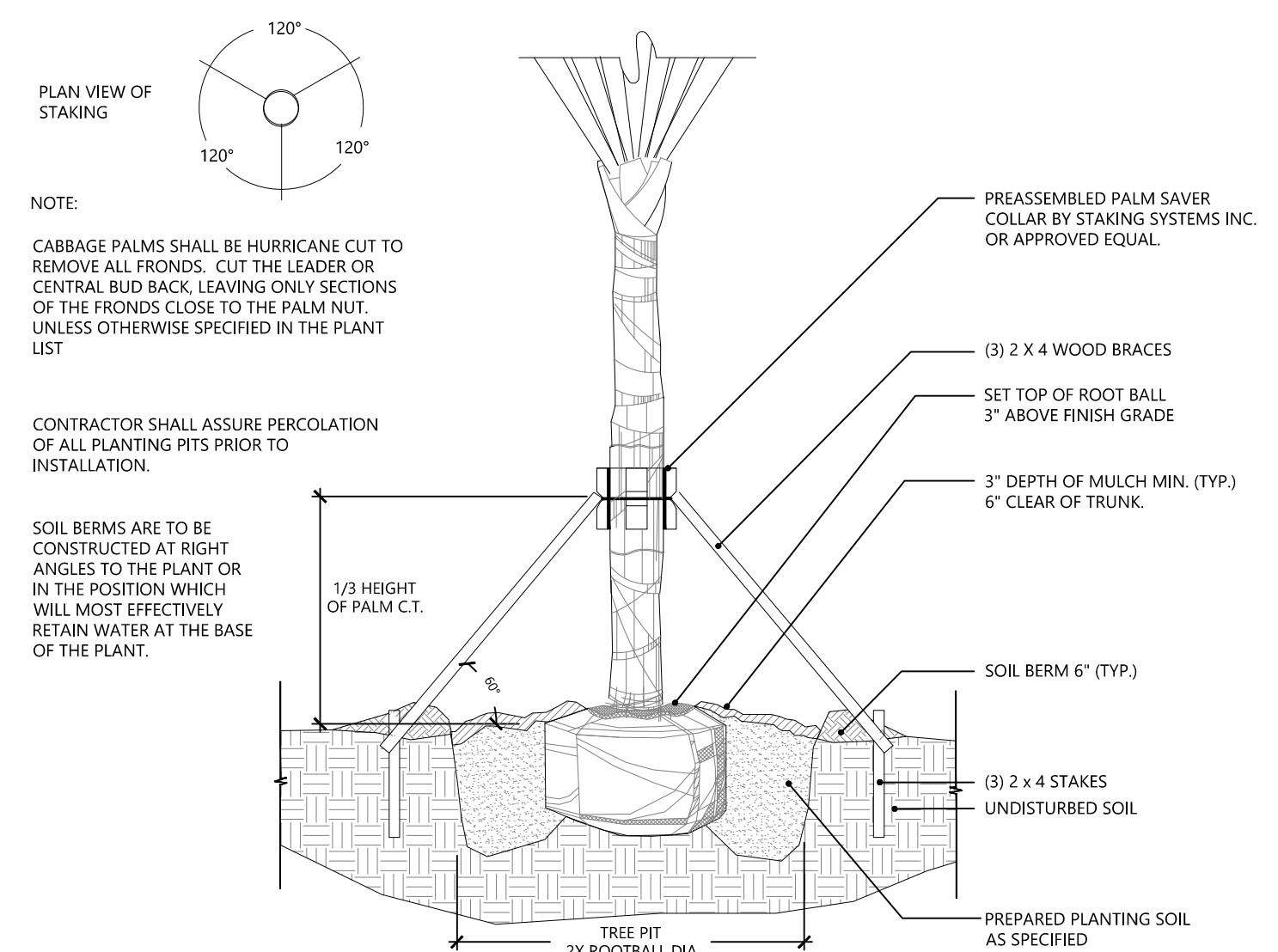


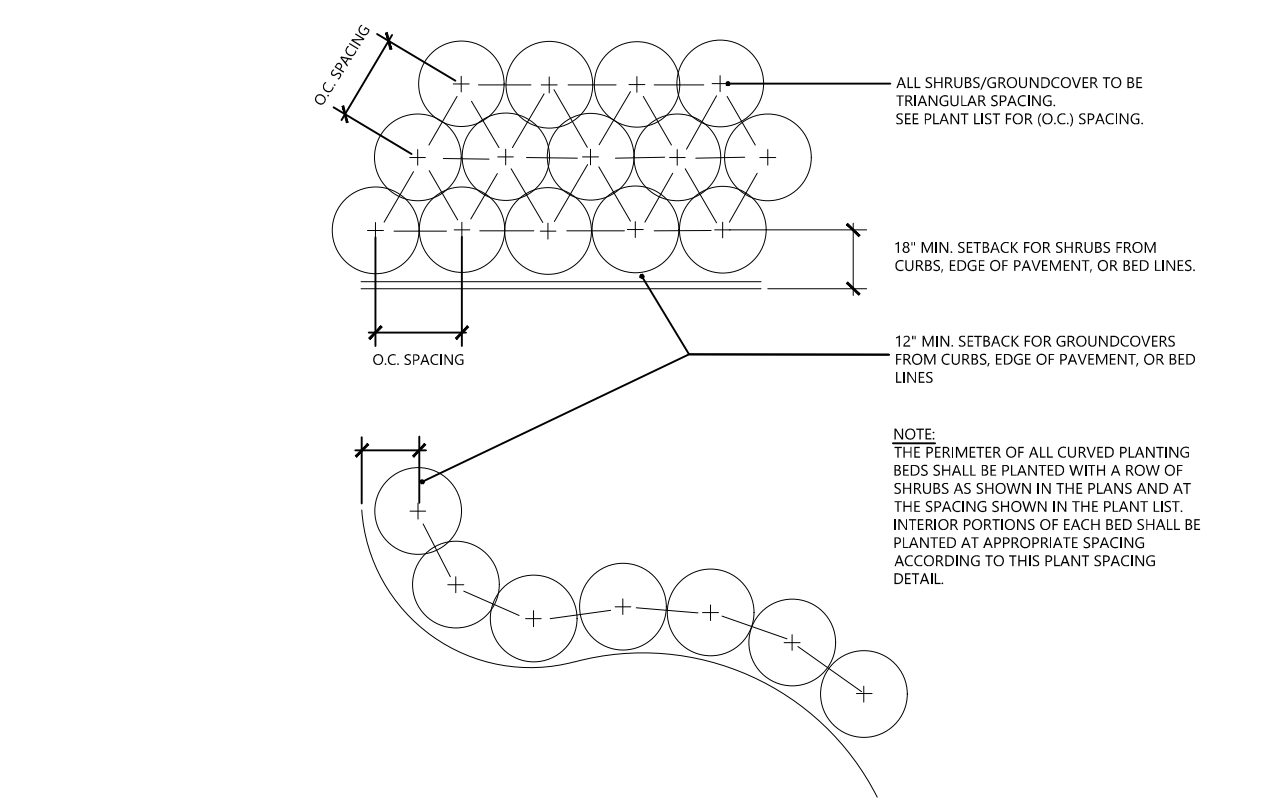
1 LANDSCAPE PLAN
SCALE: 1"=10'-0"

PLANT SCHEDULE

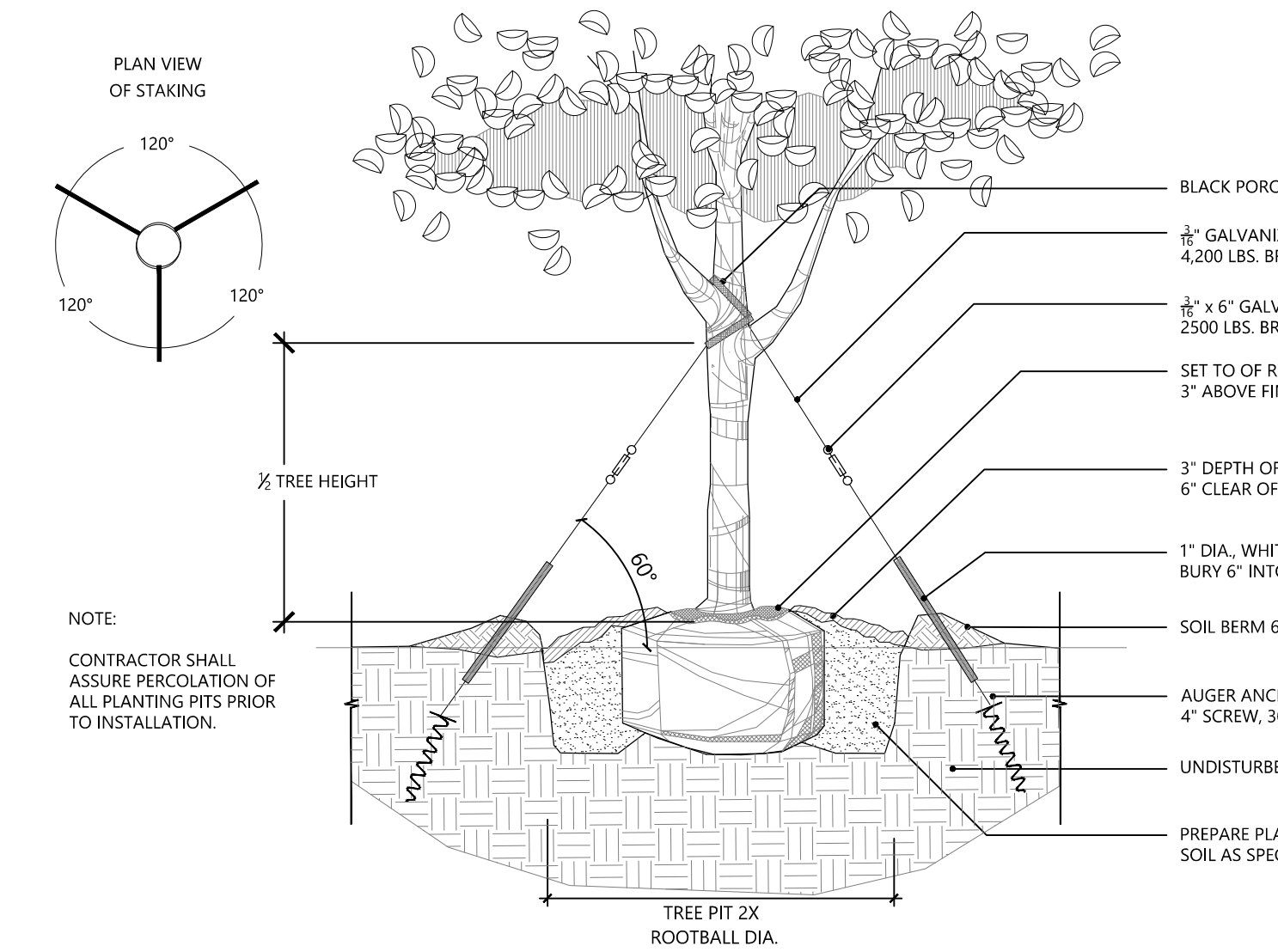
TREES	CODE	QTY	BOTANICAL NAME	COMMON NAME	CONT	SIZE
	CE	2	Conocarpus erectus	Buttonwood	7 gal.	STANDARD
	PI	1	Piscidia piscipula	Jamaican Dogwood	45 gal.	14'-16' HT., 6' CT
	PK	1	Pithecellobium keyense	Florida Keys Blackbead	FG.	3" CAL.
	PE	1	Ptychosperma elegans	Alexander Palm	FG.	SINGLE, 14' CT
	PE2	3	Ptychosperma elegans	Alexander Palm	FG.	TRIPLE, 12'-16' CT
SHRUBS	CODE	QTY	BOTANICAL NAME	COMMON NAME	CONT	SIZE
	CC	14	Codiaeum variegatum 'Curlyboy'	Curlyboy Croton	3 gal	18"-24" X 18"-24". FULL
	CR	8	Cordyline fruticosa 'Red'	Red Ti	3 gal.	24"-30", 3 PPP, FULL
SHRUB AREAS	CODE	QTY	BOTANICAL NAME	COMMON NAME	SIZE	SPACING
	CS2	17	Clusia guttifer	Small-Leaf Clusia	30 Gal., 24"-36" x 24"-36"	36" o.c.
	DRV	14	Dracaena reflexa 'Variegata'	Song of India	3 gal.	24" o.c.
	MC	46	Muhlenbergia capillaris	Pink Muhly	3 Gal., 24"-30" OA. full	30" o.c.
	SB2	18	Spartina patens	Salt Meadow Cord Grass	3 Gal., 24"-30" OA. full	36" o.c.
GROUND COVERS	CODE	QTY	BOTANICAL NAME	COMMON NAME	SIZE	SPACING
	CB	48	Canavalia rosea	Beach Bean	1 GAL., FULL IN POT, 18" O.C.	18" o.c.
	FG	22	Ficus microcarpa 'Green Island'	Green Island Ficus	1 Gal., 18"-24" OA	24" o.c.



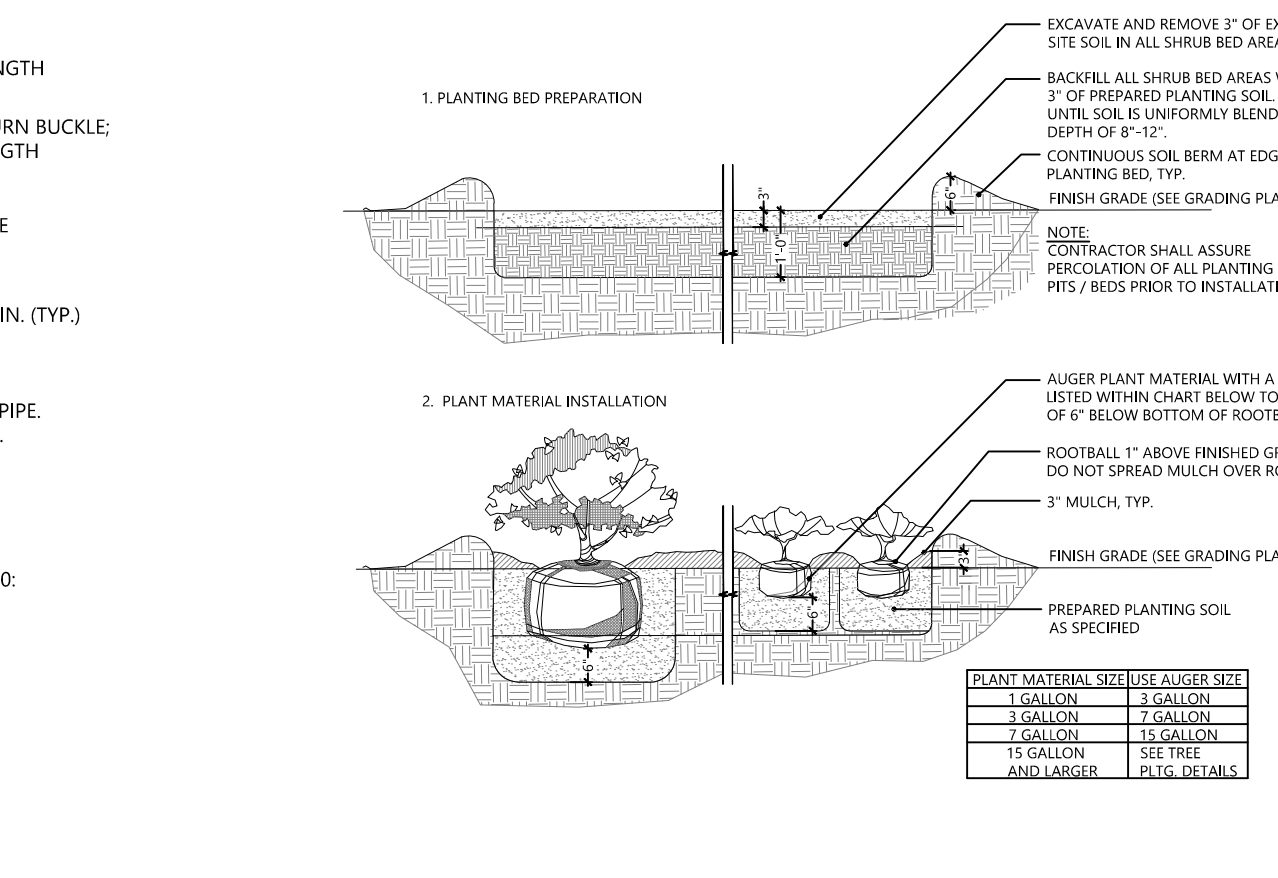
2 PALM PLANTING
SCALE: N.T.S.



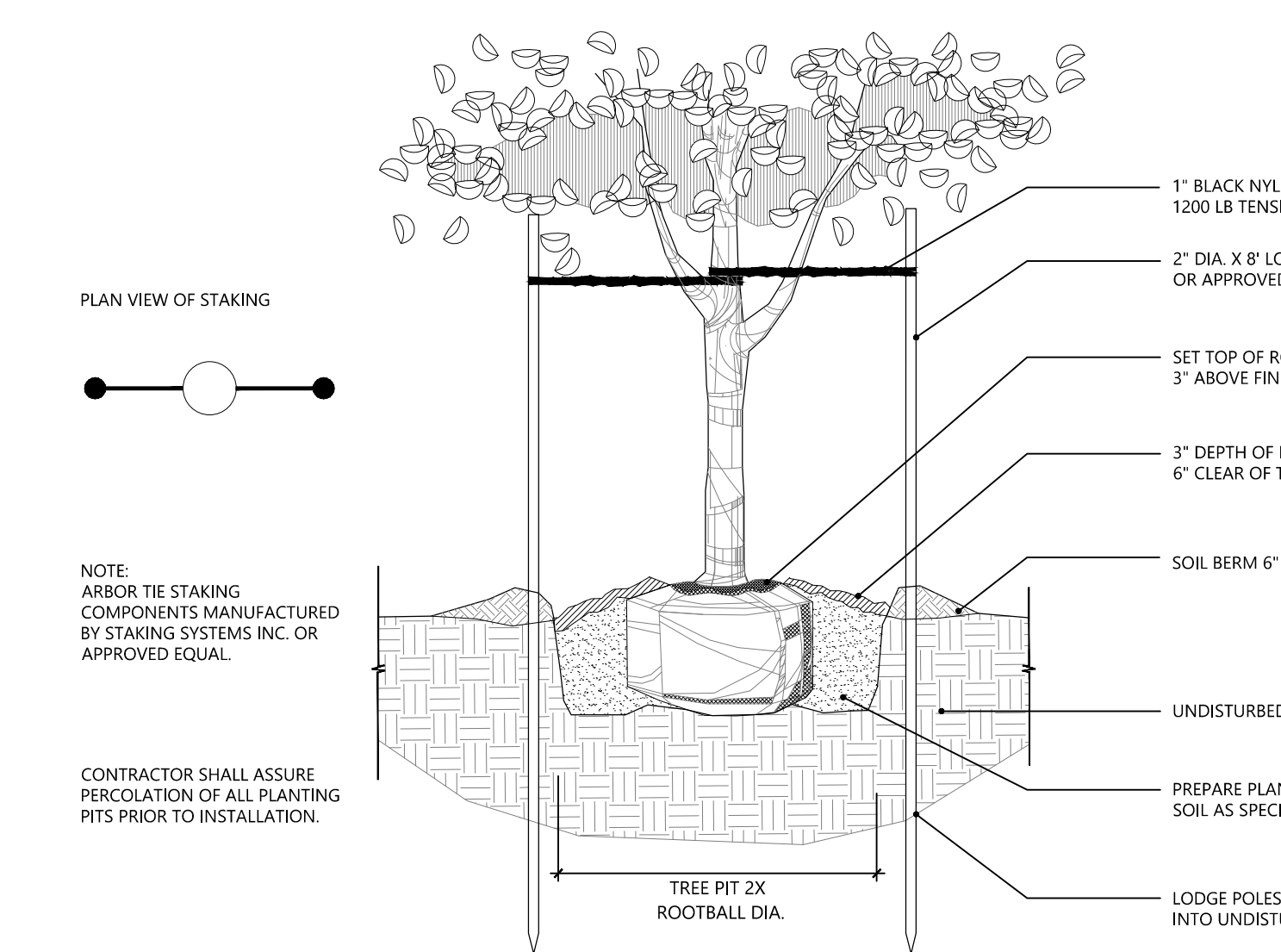
3 SHRUB AND GROUNDCOVER SPACING
SCALE: N.T.S.



4 TREE PLANTING - OVER 3" CAL.
SCALE: N.T.S.



5 SHRUB AND GROUNDCOVER PLANTING
SCALE: N.T.S.



6 TREE PLANTING - UP TO 3" CAL.
SCALE: N.T.S.

TRUMAN AVE
NEW COMMERCIAL BUILDINGS & TWO
RESIDENTIAL UNITS
 KEY WEST, FL

NO.	DATE	DESCRIPTION	BY	CHK	APV
06.18.18		TREE COMMISSION SUBMITTAL	IM	KO	KO

PROJECT NUMBER
1028-1030
 DRAWING NUMBER
L3.0
 DRAWING NAME
LANDSCAPE PLAN & DETAILS