

Glynn Archer

Urban Context

The building has a monumental scale since it is an institutional structure. The historic building is located on a double side corner, making the White and United Streets the principal façades and Seminary Street a secondary façade. The back façade faces Grinnell Street.

Glynn Archer as it looks today



Glynn Archer

Design Concept

The complex has two large “H” shape two story structures, from which the front one was built in 1923, connected with one story colonnaded corridors facing Seminary and United Streets. In the center of both structures there is a rectangular one story building which houses the auditorium.

As a later addition a one story structure was attached to the back façade, altering the symmetry as well as architectural elements of the historic façade.

Key West High School 1928. Cornerstone was laid on May 30, 1923 and construction was finished in December of that same year!



Glynn Archer

Urban Concept

The buildings were built with poured concrete. Its architectural style is neoclassical in character and its decorating elements are all high reliefs. The main entrance of the building is towards White Street, which is reinforced with a one story colonnaded front entrance, centralized in the façade. The central bay of the façade is crowned with a pediment. High reliefs, crowning and base moldings ornate all facades.

Key West High School 1924. Main façade facing White Street and secondary façade facing Seminary Street.

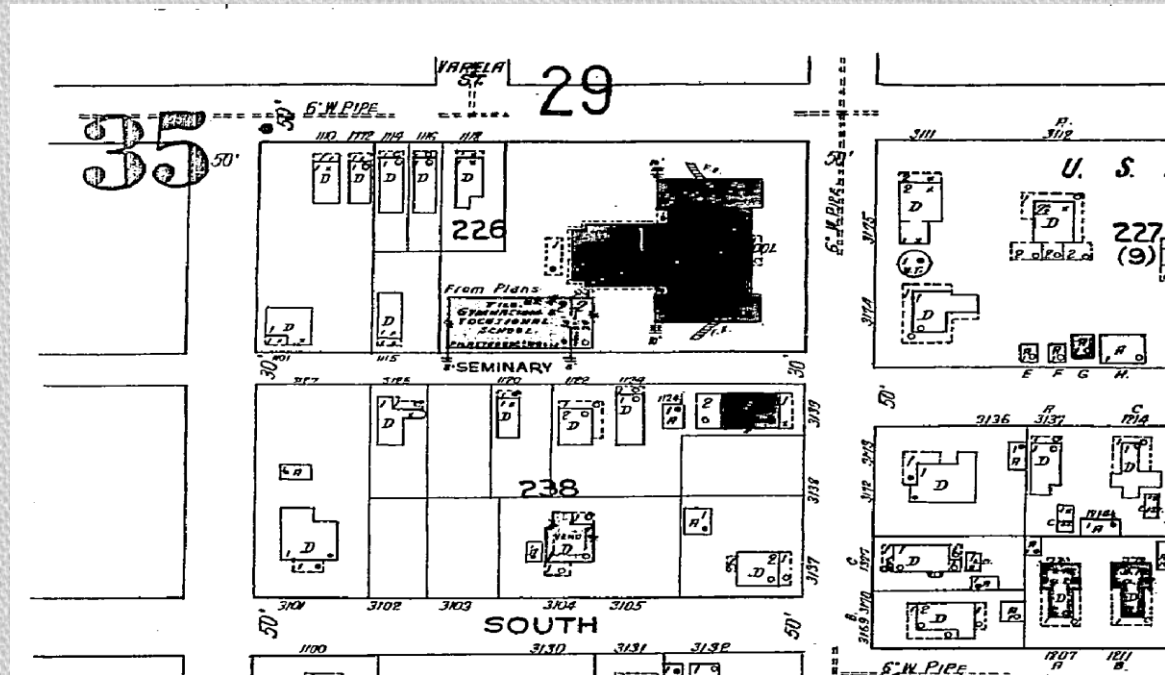


Glynn Archer

Building Morphology

According to the 1926 Sanborn map the original structures that were built were the main building facing White Street and the auditorium. By that time the lot was within one urban block. In 1927 the back “H” shape building and the Gym were built.

Key West 1926 Sanborn Map. The building towards Seminary Street has the following note; “From Plans- Tile Gymnasium and Vocational School” 2 stories. The building was never built in the location.

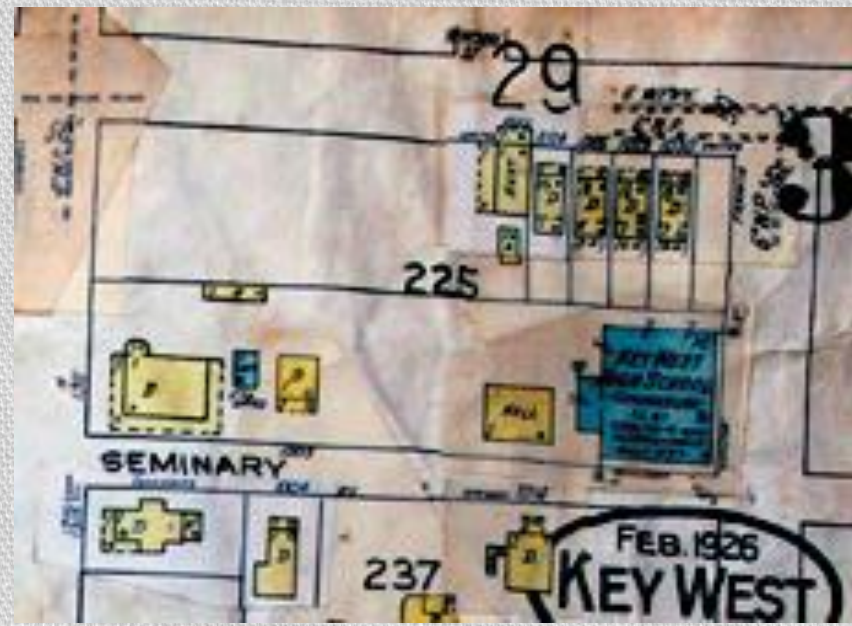


Glynn Archer

Urban Context

Historically the High School complex was surrounded by a majority of one story structures towards United and Seminary Streets. Opposite to White Street there was a US Navy Complex that by 1948 the front portion towards White Street became vacant. During the 1950's the vacant lot became a Trailer park and today the lot houses the Weather Station building, a building contemporary in design.

Key West 1948 Sanborn Map. The back portion of the complex was built by 1927.



Glynn Archer

Key West High School ca. 1942.



Glynn Archer

Urban Context

White Street has been transformed through times. From a residential neighborhood up to the mid 1960's to a mix of commercial and residential structures, mostly from Truman Avenue up to United Street. The scale of structures here are predominantly two stories while the buildings are wider than traditional commercial buildings in Old Town.

White Street



Glynn Archer

Urban Context

White Street is mostly a commercial corridor at the 1300 block. The National Weather Service building is located across the future City hall. Although it is mostly a one story structure its contemporary design creates a harmonious balance between the contemporary vs. historic. Towards the 1400 block less commercial properties are found. Building scale varies on each block.

White Street



Glynn Archer Urban Context

White Street looking south



White Street looking west



Glynn Archer

Urban Context

United Street comprises of single family frame structures, which the majority of them are one story. Towards the urban block between White and Varela Street we found the Montessori school with one and a half and two story frame structures. Towards White Street north west corner there is a two story mix use cbs structure.

United Street



Glynn Archer

Urban Context

Across the parking lot the majority of the structures are one story frame houses. Houses here are typical frame vernacular. Towards Watson Street intersection two story frame structures are dominates the streetscape.

United Street



Glynn Archer Urban Context

United Street



United Street



Glynn Archer

Urban Context

Seminary Street is strictly a residential street. The majority of the structures here are one story with the exception of the corner cbs structure and the third house on the south side of the block. A variety of styles are found, but frame vernacular homes are more prominent.

Seminary Street



Glynn Archer

Urban Context

Seminary Street is strictly a residential street. The majority of the structures here are one story with the exception of the corner cbs structure and the third house on the south side of the block. A variety of styles are found, but frame vernacular homes are more prominent.

Seminary Street



Glynn Archer Urban Context

Seminary Street



Seminary Street



Glynn Archer Urban Context

Seminary Street



Seminary Street

