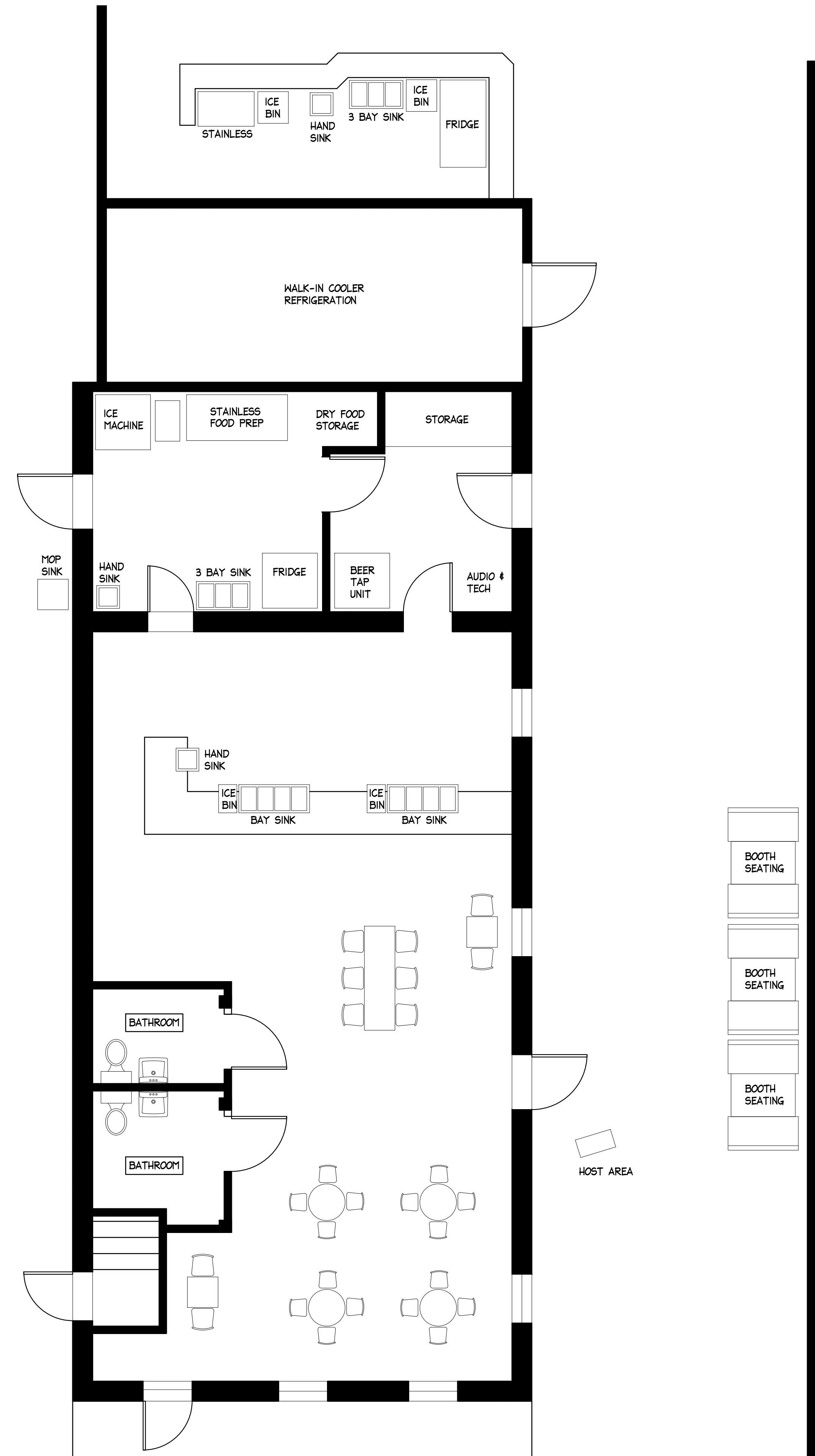
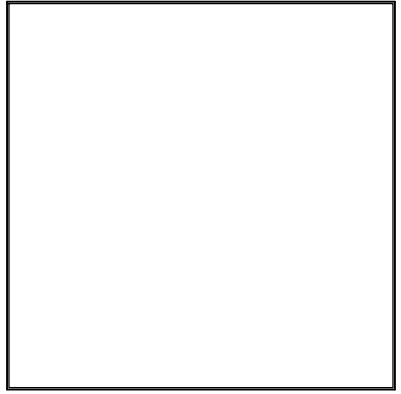
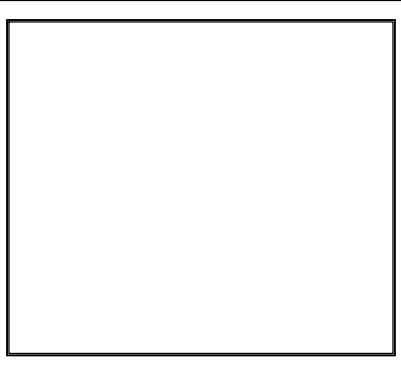


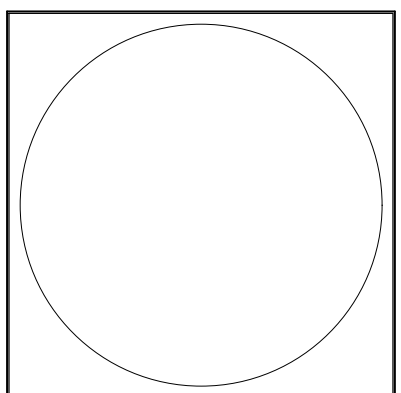
2 EXISTING SECOND FLOOR
 A1 SCALE: 1/4"=1'-0"



1 EXISTING FIRST FLOOR
 A1 SCALE: 1/4"=1'-0"



423 CAROLINE STREET
 KEY WEST, FLORIDA



410 Angela Street
 Key West, Florida 33040
 Telephone (305) 296-1347
 Facsimile (305) 296-2727
 Florida License AAC002022

Bender & Associates
 ARCHITECTS
 p.a.

Project No: ---
 Date: 12/11/2023

A1

**423 CAROLINE ST LIFE SAFETY CODE CALCULATIONS:
FLORIDA BUILDING CODE 2020, BUILDING**

Section 304 Occupancy Classification:
 Bar: Group 'A-2' Assembly
 Building Area:
 2nd Floor: 932 s.f.
 Total: 932 s.f.

Table 601 Construction Type: Type V-B construction, non-sprinklered.
 Primary structural frame: 0 hours.
 Exterior / Interior Bearing walls: 0 hours.
 Exterior Non-bearing walls: 0 hours.
 Interior Non-bearing walls: 0 hours.
 Floor construction / Secondary members: 0 hours.
 Roof construction / secondary members: 0 hours.

Table 503 Allowable Building Heights & Areas (Type V-B):

Group	# Stories Allowed	Area Allowed	Bldg. Height
Allowed:			
A-2	1	6,000 sf/floor	40'

Table 1004.1.2 Occupancy Loads:
 2nd Floor: A-2
 716 s.f. / 15 net (unconcentrated) = 48 persons
 Bar : 102 sf. / 200 = 1 persons

Table 707.3.9 Fire Resistant Separations:

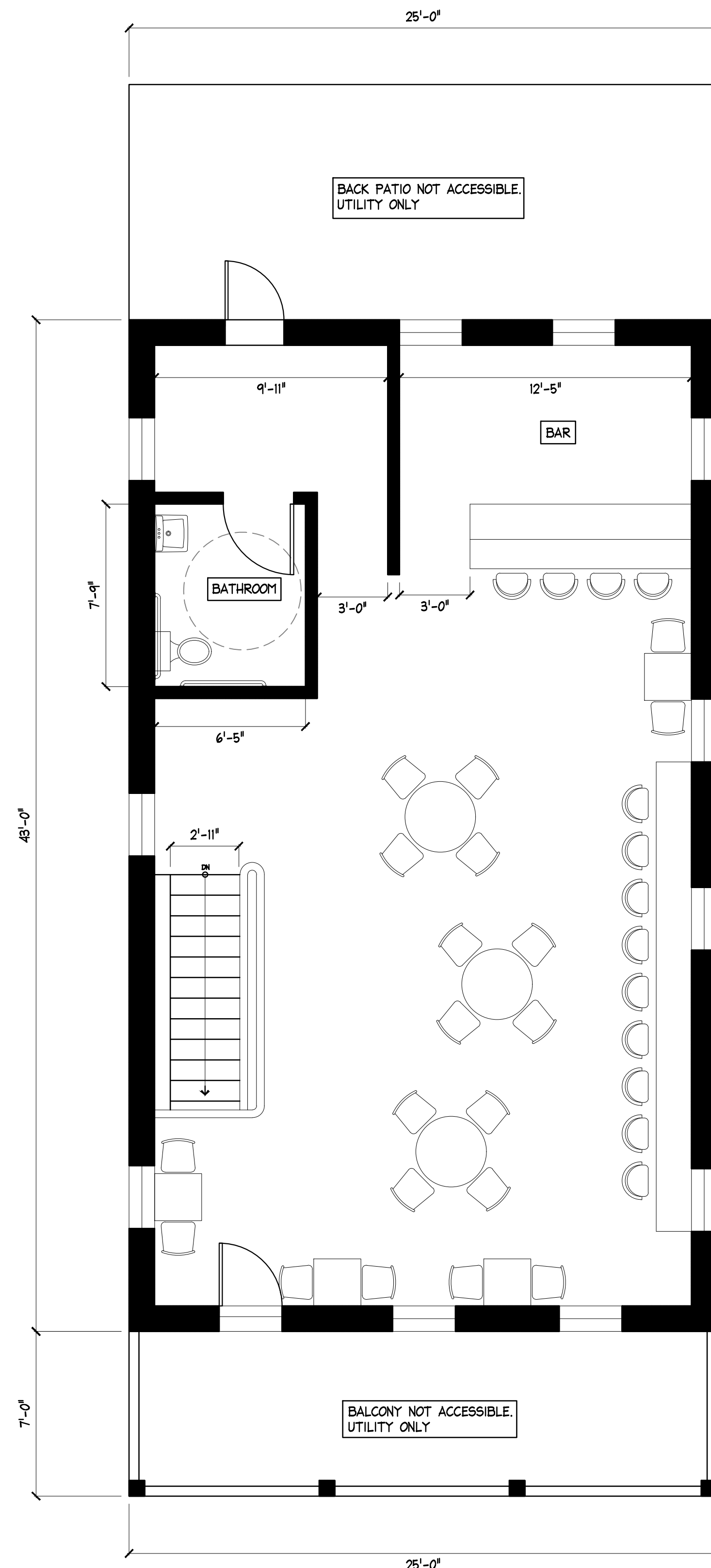
Group:	Separation:
A-2	N/A

Table 1006.3.3(2) Number of Exits Required:
 2nd floor: 1 (MAXIMUM OCCUPANT LOAD PER STORY = 49)
 (MAXIMUM COMMON PATH OF EGRESS TRAVEL DISTANCE (feet) = 75)

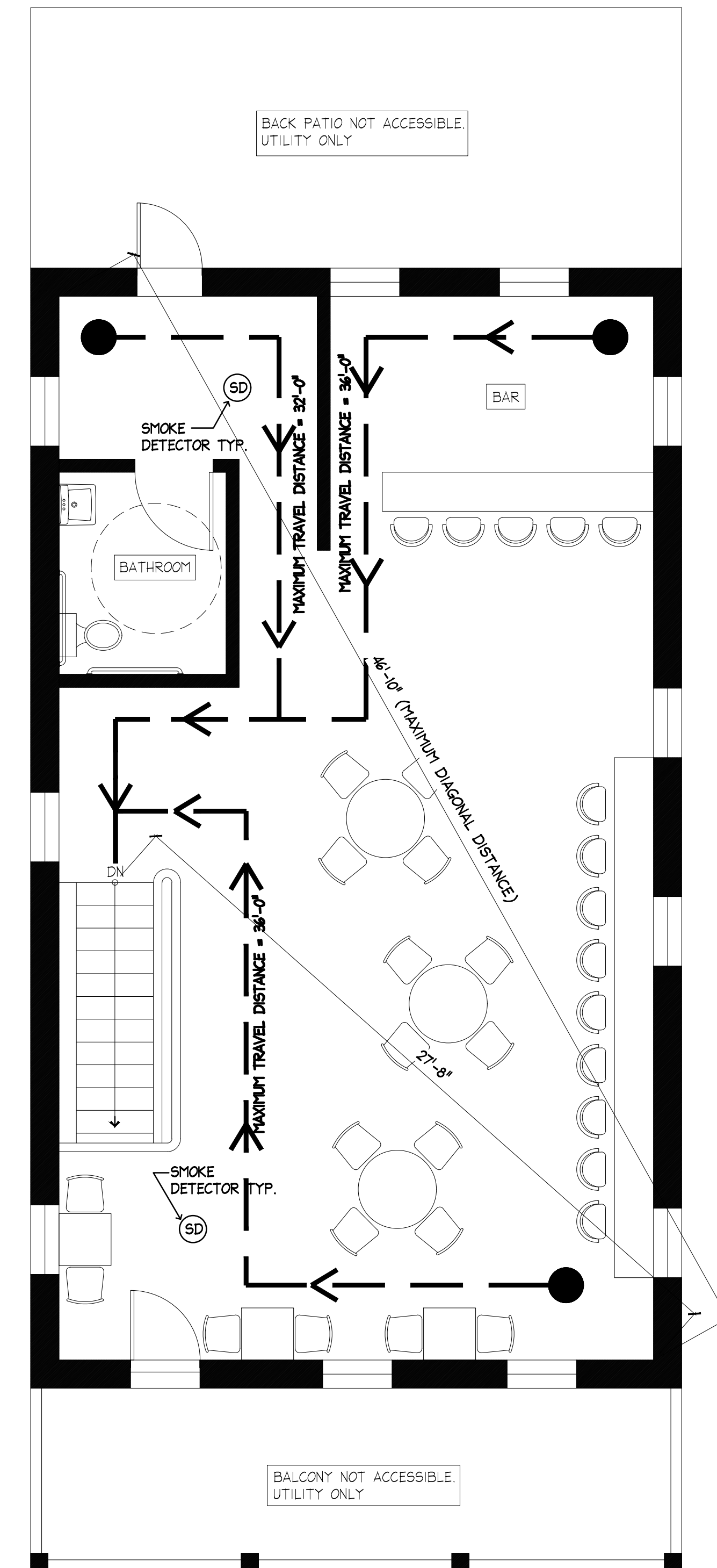
Section 1005.1 Exit Access Travel Distance:

Occupancy Group:	Travel Distance:
A-2 : ASSEMBLY	36' (200' allowable) OK.

Egress Width:
 2nd Floor: 49 persons x .2' = 10' (32' provided)

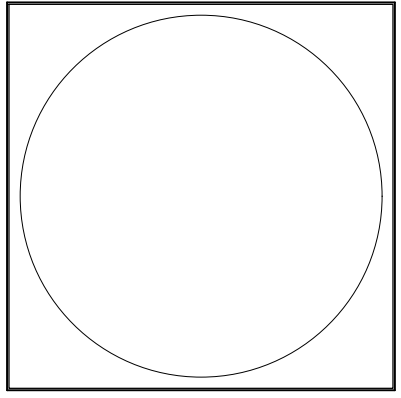


2 PROPOSED SECOND FLOOR
 A1 SCALE: 1/4"=1'-0"



1 LIFE SAFETY PLAN
 LS SCALE: 1/4"=1'-0"

423 CAROLINE STREET
 KEY WEST, FLORIDA



410 Angela Street
 Key West, Florida 33040
 Telephone (305) 296-1347
 Facsimile (305) 296-2727
 Florida License AAC002022

Bender & Associates
 ARCHITECTS
 p.c.

Project No: ---
 Date: 12/11/2023

LS