



BERMELLO AJAMIL & PARTNERS • INC

Architecture • Engineering • Planning
Interior Design • Landscape Architecture
2601 South Bayshore Drive
Suite 1000
Miami, Florida 33133
(305) 859-2050
Fax (305) 860-3700

PREPARED FOR/OWNER:
CITY OF KEY WEST, FL
P. O. BOX 1409
3140 FLAGLER AVENUE
KEY WEST, FL 33041



PROJECT NAME:

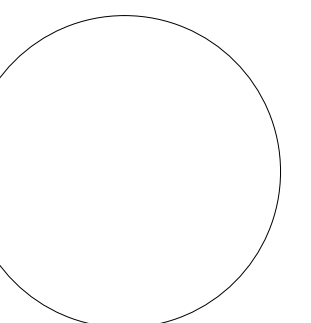
**TRUMAN
WATERFRONT
PARK**

PROJECT LOCATION/ADDRESS:

**TRUMAN WATERFRONT PARK
WEST OF FORT STREET AND THE
TRUMAN ANNEX DEVELOPMENT,
NORTH OF KEY WEST NAVAL BASE**

SUB-CONSULTANT INFORMATION:

PROFESSIONAL SEAL:



KIRK J. OLNEY
FLORIDA REGISTERED LANDSCAPE
LA0001705

SUBMITTAL DESCRIPTION / MILESTONE:

**DEVELOPMENT
APPLICATION
March 3, 2014**

REVISIONS:

DRAWING SHEET INFORMATION

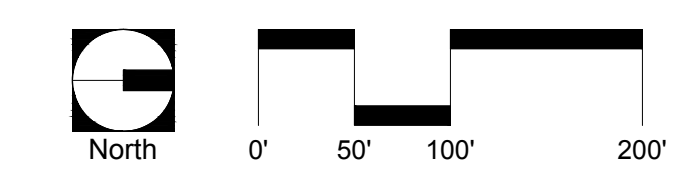
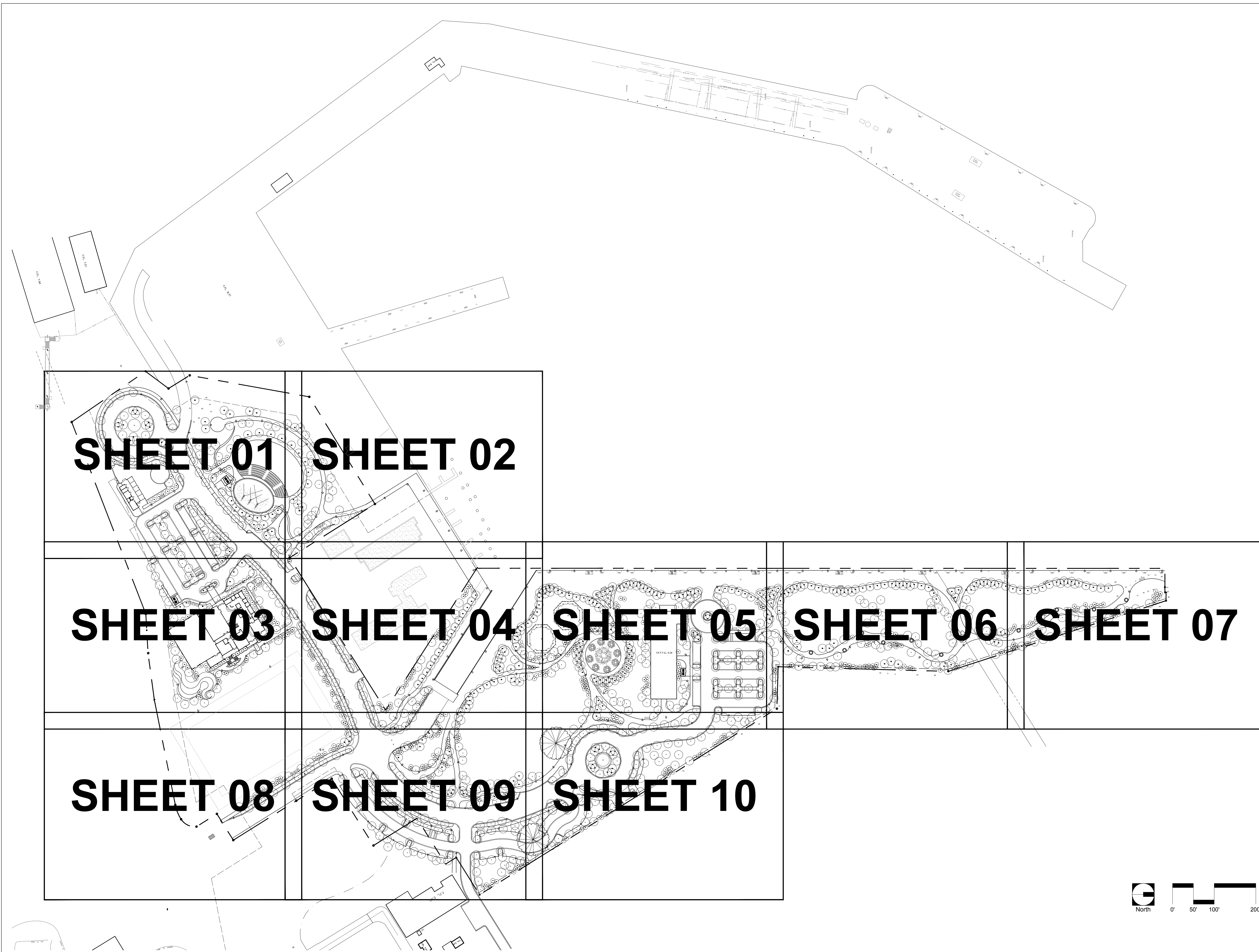
BA PROJECT NO.: 12010
SCALE: 1" = 100'-0"
DATE: February 12, 2014
DRAWN BY: KJO
CHECKED BY: RPH
CADD FILE: X:\Truman Waterfront Base.dwg

DRAWING TITLE:

**LANDSCAPE
PLAN
KEY SHEET**

SHEET NO.

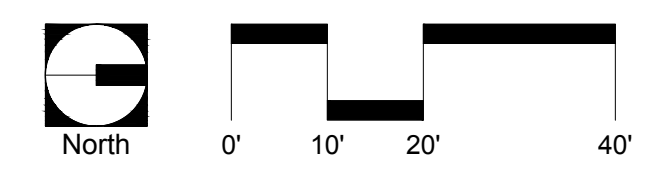
LL-00



NOTE:
FOR TREE SYMBOL
LEGEND SEE LL-11



MATCHLINE - SHEET 01
MATCHLINE - SHEET 03



MATCHLINE - SHEET 01
MATCHLINE - SHEET 03



**BERMELLO AJAMIL
& PARTNERS • INC**
Architecture • Engineering • Planning
Interior Design • Landscape Architecture
2601 South Bayshore Drive
Suite 1000
Miami, Florida 33133
(305) 859-2050
Fax (305) 860-3700

PREPARED FOR/OWNER:
CITY OF KEY WEST, FL
P. O. BOX 1409
3140 FLAGLER AVENUE
KEY WEST, FL 33041

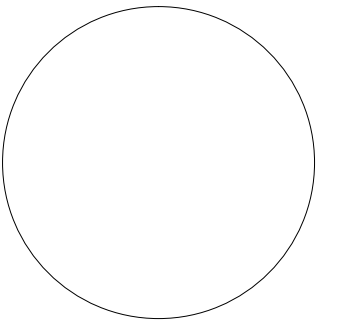


PROJECT NAME:
**TRUMAN
WATERFRONT
PARK**

PROJECT LOCATION/ADDRESS:
**TRUMAN WATERFRONT PARK
WEST OF FORT STREET AND THE
TRUMAN ANNEX DEVELOPMENT,
NORTH OF KEY WEST NAVAL BASE**

SUB-CONSULTANT INFORMATION:

PROFESSIONAL SEAL:



KIRK J. OLNEY
FLORIDA REGISTERED LANDSCAPE
LA0001705

SUBMITTAL DESCRIPTION / MILESTONE:

**DEVELOPMENT
APPLICATION
March 3, 2014**

REVISIONS:

DRAWING SHEET INFORMATION

BA PROJECT NO.: 12010
SCALE: 1" = 20'-0"
DATE: February 12, 2014
DRAWN BY: KJO
CHECKED BY: RPH
CADD FILE: X:\Truman Waterfront Base.dwg

DRAWING TITLE:
**LANDSCAPE
PLAN**

SHEET NO.

LL-01



**BERMELLO AJAMIL
& PARTNERS • INC**

Architecture • Engineering • Planning
Interior Design • Landscape Architecture
2601 South Bayshore Drive
Suite 1000
Miami, Florida 33133
(305) 859-2050
Fax (305) 860-3700

PREPARED FOR/OWNER:
CITY OF KEY WEST, FL
P. O. BOX 1409
3140 FLAGLER AVENUE
KEY WEST, FL 33041



PROJECT NAME:

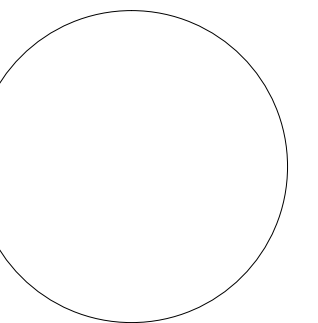
**TRUMAN
WATERFRONT
PARK**

PROJECT LOCATION/ADDRESS:

TRUMAN WATERFRONT PARK
WEST OF FORT STREET AND THE
TRUMAN ANNEX DEVELOPMENT,
NORTH OF KEY WEST NAVAL BASE

SUB-CONSULTANT INFORMATION:

PROFESSIONAL SEAL:



KIRK J. OLNEY
FLORIDA REGISTERED LANDSCAPE
LA0001705

SUBMITTAL DESCRIPTION / MILESTONE:

**DEVELOPMENT
APPLICATION
March 3, 2014**

REVISIONS:

DRAWING SHEET INFORMATION

BA PROJECT NO.: 12010
SCALE: 1" = 20'-0"
DATE: February 12, 2014
DRAWN BY: KJO
CHECKED BY: RPH
CADD FILE: X:\Truman Waterfront Base.dwg

DRAWING TITLE:

**LANDSCAPE
PLAN**

SHEET NO.

LL-02



MATCHLINE - SHEET 01
MATCHLINE - SHEET 03

MATCHLINE - SHEET 01
MATCHLINE - SHEET 03

NOTE:
FOR TREE SYMBOL
LEGEND SEE LL-11

PROPERTY BOUNDARY

50' NAVAL SETBACK

PROPERTY BOUNDARY

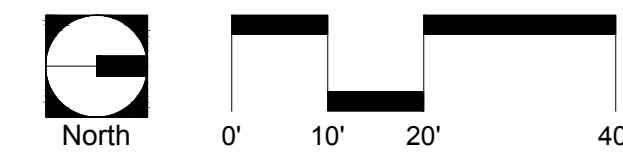
PROPERTY BOUNDARY

50' NAVAL SETBACK

MATCHLINE - SHEET 03
MATCHLINE - SHEET 04

MATCHLINE - SHEET 03
MATCHLINE - SHEET 08

MATCHLINE - SHEET 03
MATCHLINE - SHEET 08



**BERMELLO AJAMIL
& PARTNERS • INC**
Architecture • Engineering • Planning
Interior Design • Landscape Architecture
2601 South Bayshore Drive
Suite 1000
Miami, Florida 33133
(305) 859-2050
Fax (305) 860-3700

PREPARED FOR/OWNER:
CITY OF KEY WEST, FL
P. O. BOX 1409
3140 FLAGLER AVENUE
KEY WEST, FL 33041

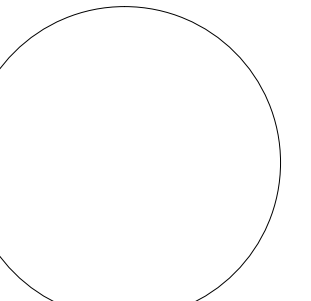


PROJECT NAME:
**TRUMAN
WATERFRONT
PARK**

PROJECT LOCATION/ADDRESS:
TRUMAN WATERFRONT PARK
WEST OF FORT STREET AND THE
TRUMAN ANNEX DEVELOPMENT,
NORTH OF KEY WEST NAVAL BASE

SUB-CONSULTANT INFORMATION:

PROFESSIONAL SEAL:



KIRK J. OLNEY
FLORIDA REGISTERED LANDSCAPE
LA0001705

SUBMITTAL DESCRIPTION / MILESTONE:

**DEVELOPMENT
APPLICATION
March 3, 2014**

REVISIONS:

NO.	DESCRIPTION

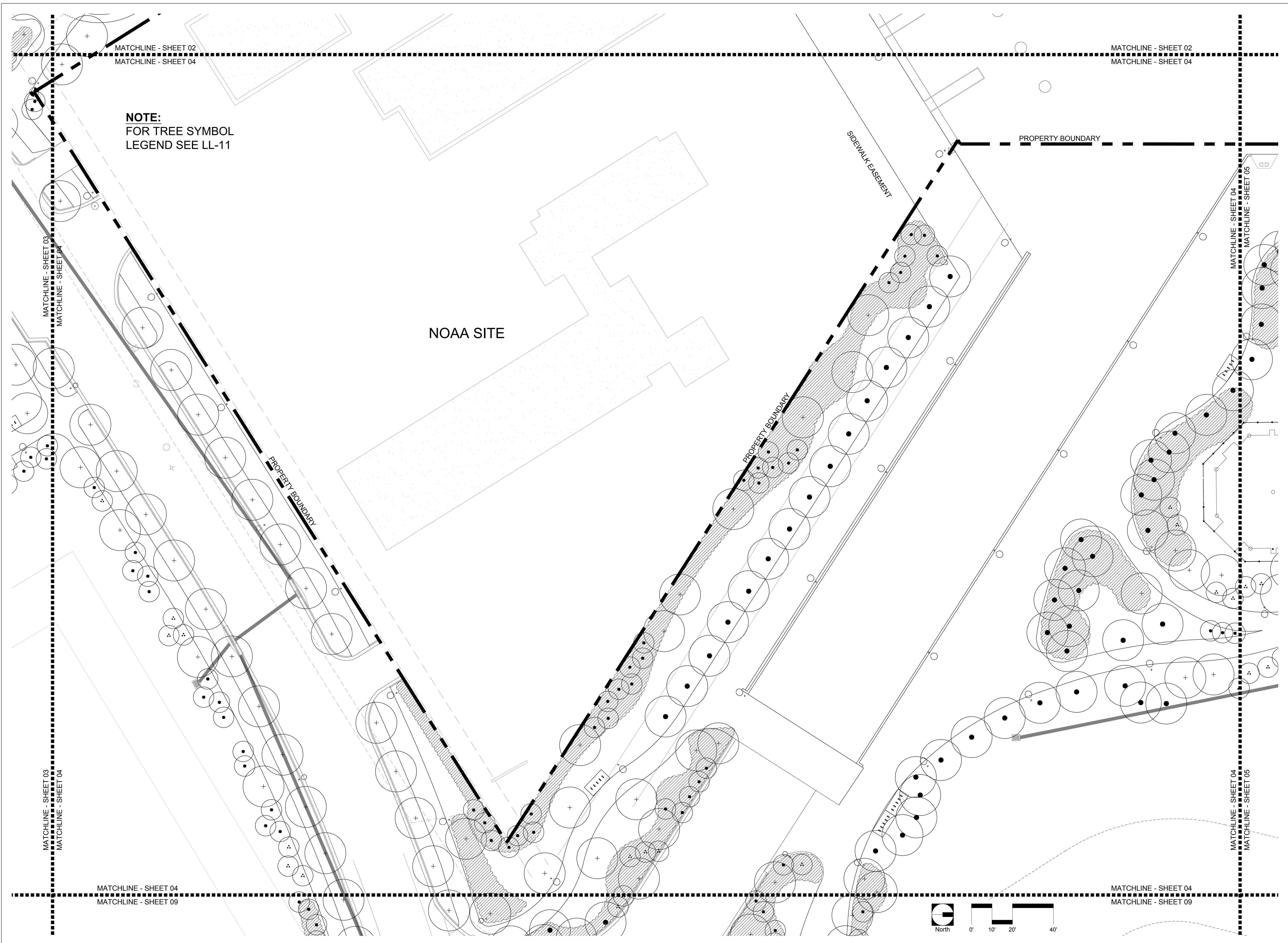
DRAWING SHEET INFORMATION

BA PROJECT NO.: 12010
SCALE: 1" = 20'-0"
DATE: February 12, 2014
DRAWN BY: KJO
CHECKED BY: RPH
CADD FILE: X:\Truman Waterfront Base.dwg

DRAWING TITLE:
**LANDSCAPE
PLAN**

SHEET NO.

LL-03



NOTE:
FOR TREE SYMBOL
LEGEND SEE LL-11

NOAA SITE

SIDEWALK EASEMENT

PROPERTY BOUNDARY

PROPERTY BOUNDARY



**BERMELLO AJAMIL
& PARTNERS • INC**
Architecture • Engineering • Planning
Interior Design • Landscape Architecture
2601 South Bayshore Drive
Suite 1000
Miami, Florida 33133
(305) 859-2050
Fax (305) 860-3700

PREPARED FOR/OWNER:
CITY OF KEY WEST, FL
P. O. BOX 1409
3140 FLAGLER AVENUE
KEY WEST, FL 33041

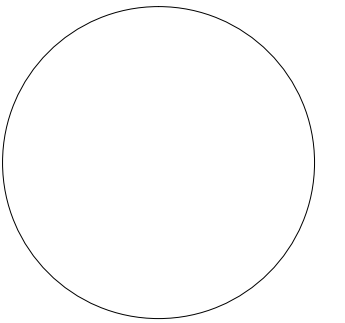


PROJECT NAME:
**TRUMAN
WATERFRONT
PARK**

PROJECT LOCATION/ADDRESS:
TRUMAN WATERFRONT PARK
WEST OF FORT STREET AND THE
TRUMAN ANNEX DEVELOPMENT,
NORTH OF KEY WEST NAVAL BASE

SUB-CONSULTANT INFORMATION:

PROFESSIONAL SEAL:



KIRK J. OLNEY
FLORIDA REGISTERED LANDSCAPE
LA0001705

SUBMITTAL DESCRIPTION / MILESTONE:

**DEVELOPMENT
APPLICATION
March 3, 2014**

REVISIONS:

DRAWING SHEET INFORMATION

BA PROJECT NO.: 12010
SCALE: 1" = 20'-0"
DATE: February 12, 2014
DRAWN BY: KJO
CHECKED BY: RPH
CADD FILE: X:\Truman Waterfront Base.dwg

DRAWING TITLE:
**LANDSCAPE
PLAN**

SHEET NO.

LL-04



**BERMELLO AJAMIL
& PARTNERS • INC**

Architecture • Engineering • Planning
Interior Design • Landscape Architecture
2601 South Bayshore Drive
Suite 1000
Miami, Florida 33133
(305) 859-2050
Fax (305) 860-3700

PREPARED FOR/OWNER:
**CITY OF KEY WEST, FL
P. O. BOX 1409
3140 FLAGLER AVENUE
KEY WEST, FL 33041**

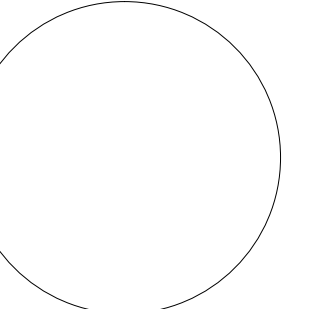


PROJECT NAME:
**TRUMAN
WATERFRONT
PARK**

PROJECT LOCATION/ADDRESS:
**TRUMAN WATERFRONT PARK
WEST OF FORT STREET AND THE
TRUMAN ANNEX DEVELOPMENT,
NORTH OF KEY WEST NAVAL BASE**

SUB-CONSULTANT INFORMATION:

PROFESSIONAL SEAL:



**KIRK J. OLNEY
FLORIDA REGISTERED LANDSCAPE
LA0001705**

SUBMITTAL DESCRIPTION / MILESTONE:

**DEVELOPMENT
APPLICATION
March 3, 2014**

REVISIONS:

DRAWING SHEET INFORMATION

BA PROJECT NO.: 12010
SCALE: 1" = 20'-0"
DATE: February 12, 2014
DRAWN BY: KJO
CHECKED BY: RPH
CADD FILE: X:\Truman Waterfront Base.dwg

DRAWING TITLE:
**LANDSCAPE
PLAN**

SHEET NO.

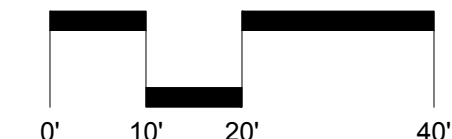
LL-05

**NOTE:
FOR TREE SYMBOL
LEGEND SEE LL-11**

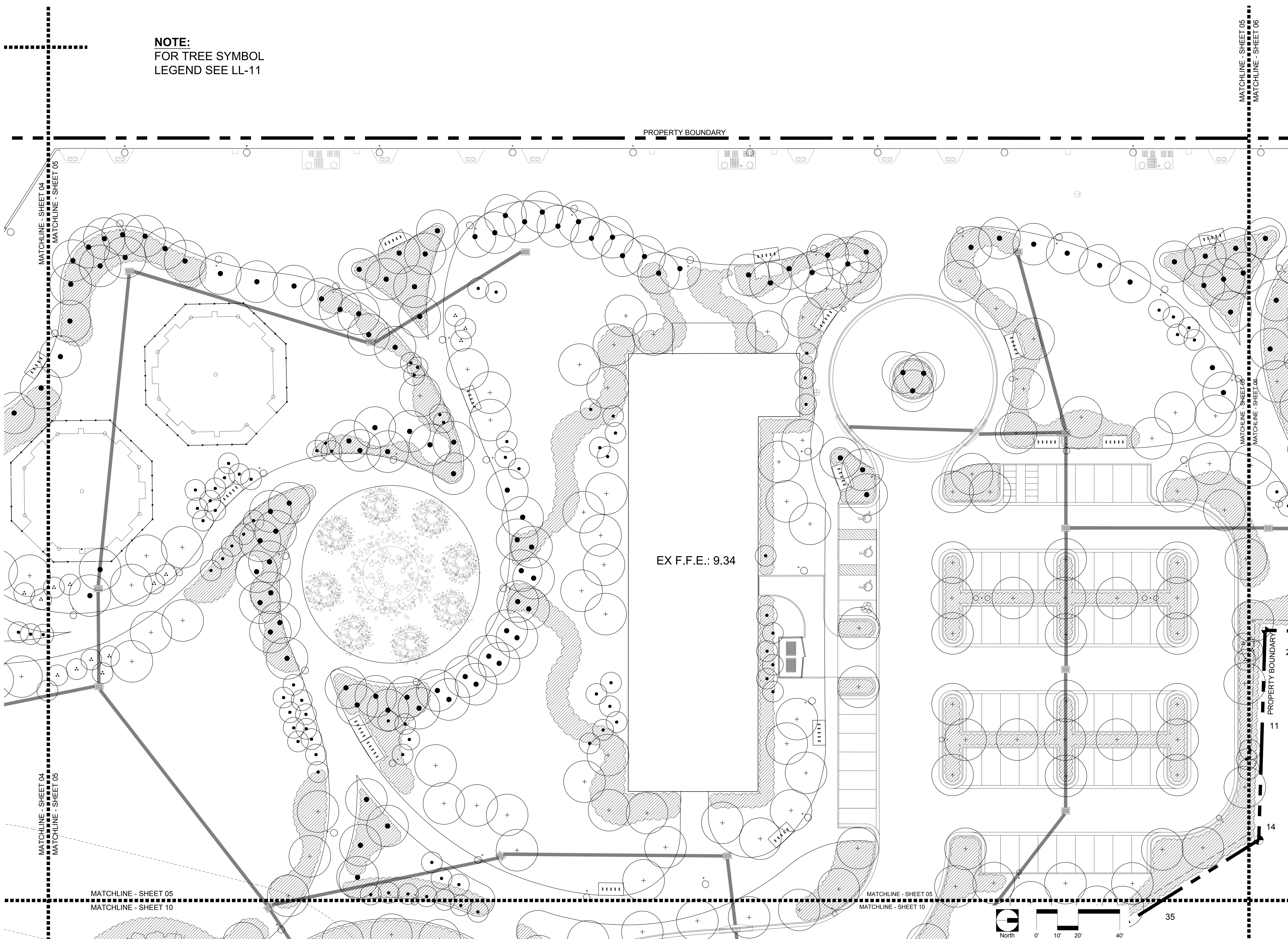
PROPERTY BOUNDARY

EX F.F.E.: 9.34

PROPERTY BOUNDARY
2
11
14



35





BERMELLO AJAMIL & PARTNERS • INC

Architecture • Engineering • Planning
Interior Design • Landscape Architecture
2601 South Bayshore Drive
Suite 1000
Miami, Florida 33133
(305) 859-2050
Fax (305) 860-3700

PREPARED FOR/OWNER:
CITY OF KEY WEST, FL
P. O. BOX 1409
3140 FLAGLER AVENUE
KEY WEST, FL 33041

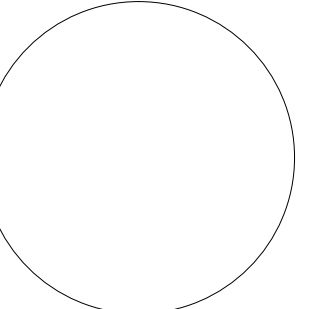


PROJECT NAME:
TRUMAN WATERFRONT PARK

PROJECT LOCATION/ADDRESS:
TRUMAN WATERFRONT PARK
WEST OF FORT STREET AND THE
TRUMAN ANNEX DEVELOPMENT,
NORTH OF KEY WEST NAVAL BASE

SUB-CONSULTANT INFORMATION:

PROFESSIONAL SEAL:



KIRK J. OLNEY
FLORIDA REGISTERED LANDSCAPE
LA0001705

SUBMITTAL DESCRIPTION / MILESTONE:

DEVELOPMENT APPLICATION
March 3, 2014

REVISIONS:

DRAWING SHEET INFORMATION

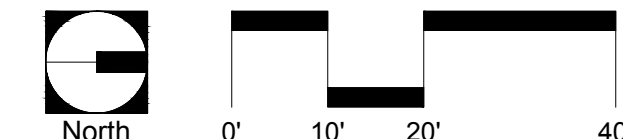
BA PROJECT NO.: 12010
SCALE: 1" = 20'-0"
DATE: February 12, 2014
DRAWN BY: KJO
CHECKED BY: RPH
CADD FILE: X:\Truman Waterfront Base.dwg

DRAWING TITLE:
LANDSCAPE PLAN

SHEET NO.

LL-06

NOTE:
FOR TREE SYMBOL
LEGEND SEE LL-11





BERMELLO AJAMIL & PARTNERS • INC

Architecture • Engineering • Planning
Interior Design • Landscape Architecture
2601 South Bayshore Drive
Suite 1000
Miami, Florida 33133
(305) 859-2050
Fax (305) 860-3700

PREPARED FOR/OWNER:
CITY OF KEY WEST, FL
P. O. BOX 1409
3140 FLAGLER AVENUE
KEY WEST, FL 33041

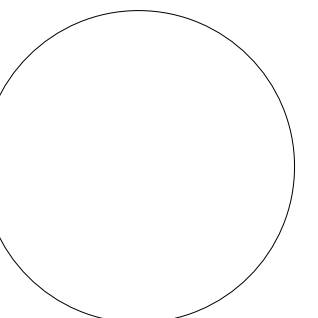


PROJECT NAME:
**TRUMAN
WATERFRONT
PARK**

PROJECT LOCATION/ADDRESS:
TRUMAN WATERFRONT PARK
WEST OF FORT STREET AND THE
TRUMAN ANNEX DEVELOPMENT,
NORTH OF KEY WEST NAVAL BASE

SUB-CONSULTANT INFORMATION:

PROFESSIONAL SEAL:



KIRK J. OLNEY
FLORIDA REGISTERED LANDSCAPE
LA0001705

SUBMITTAL DESCRIPTION / MILESTONE:

**DEVELOPMENT
APPLICATION
March 3, 2014**

REVISIONS:

DRAWING SHEET INFORMATION

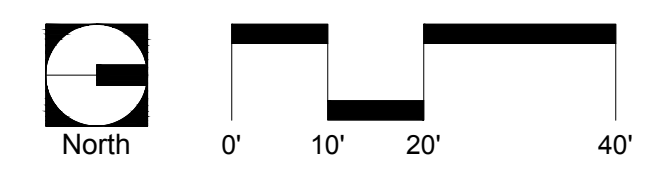
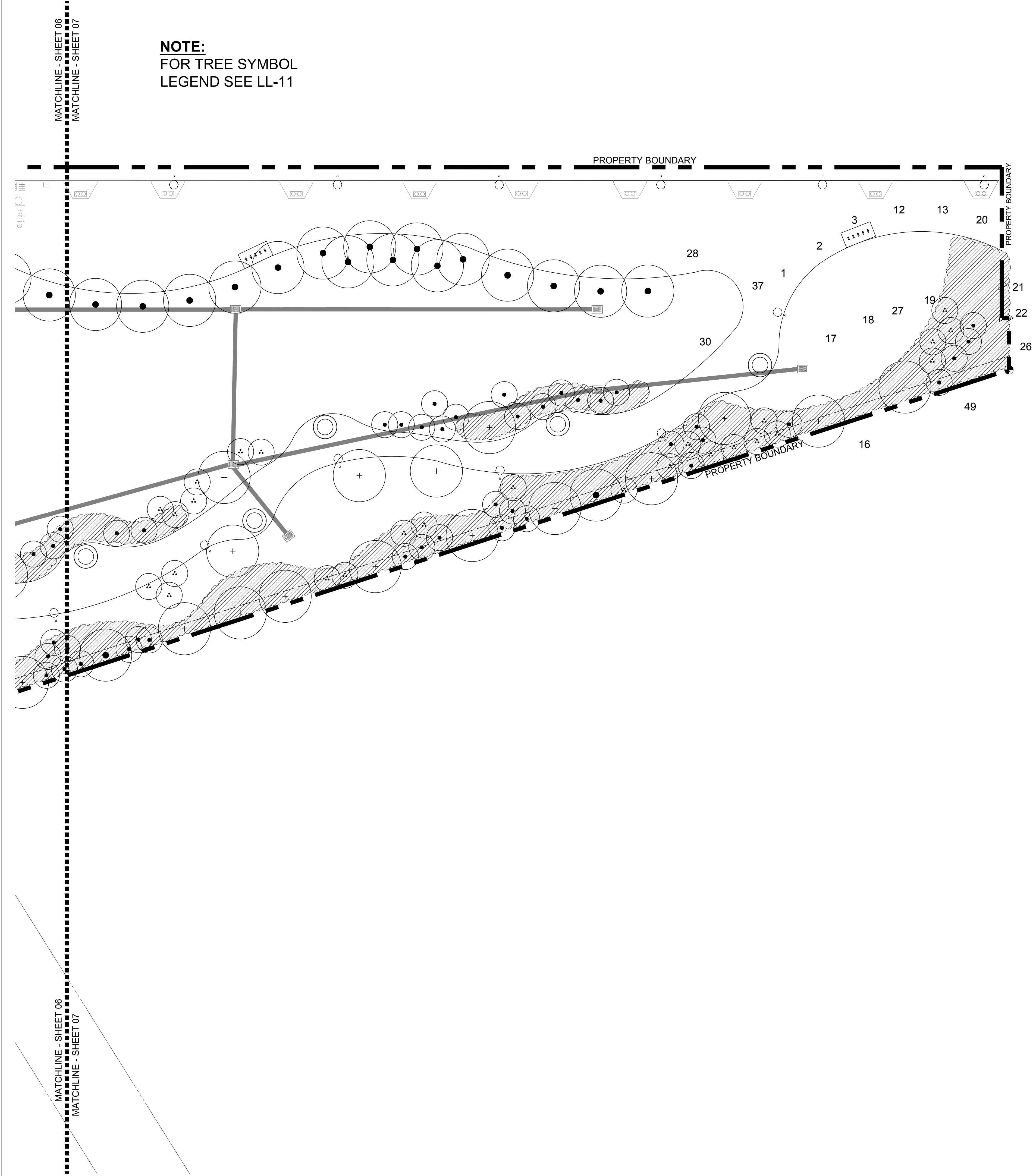
BA PROJECT NO.: 12010
SCALE: 1" = 20'-0"
DATE: February 12, 2014
DRAWN BY: KJO
CHECKED BY: RPH
CADD FILE: X:\Truman Waterfront Base.dwg

DRAWING TITLE:
**LANDSCAPE
PLAN**

SHEET NO.

LL-07

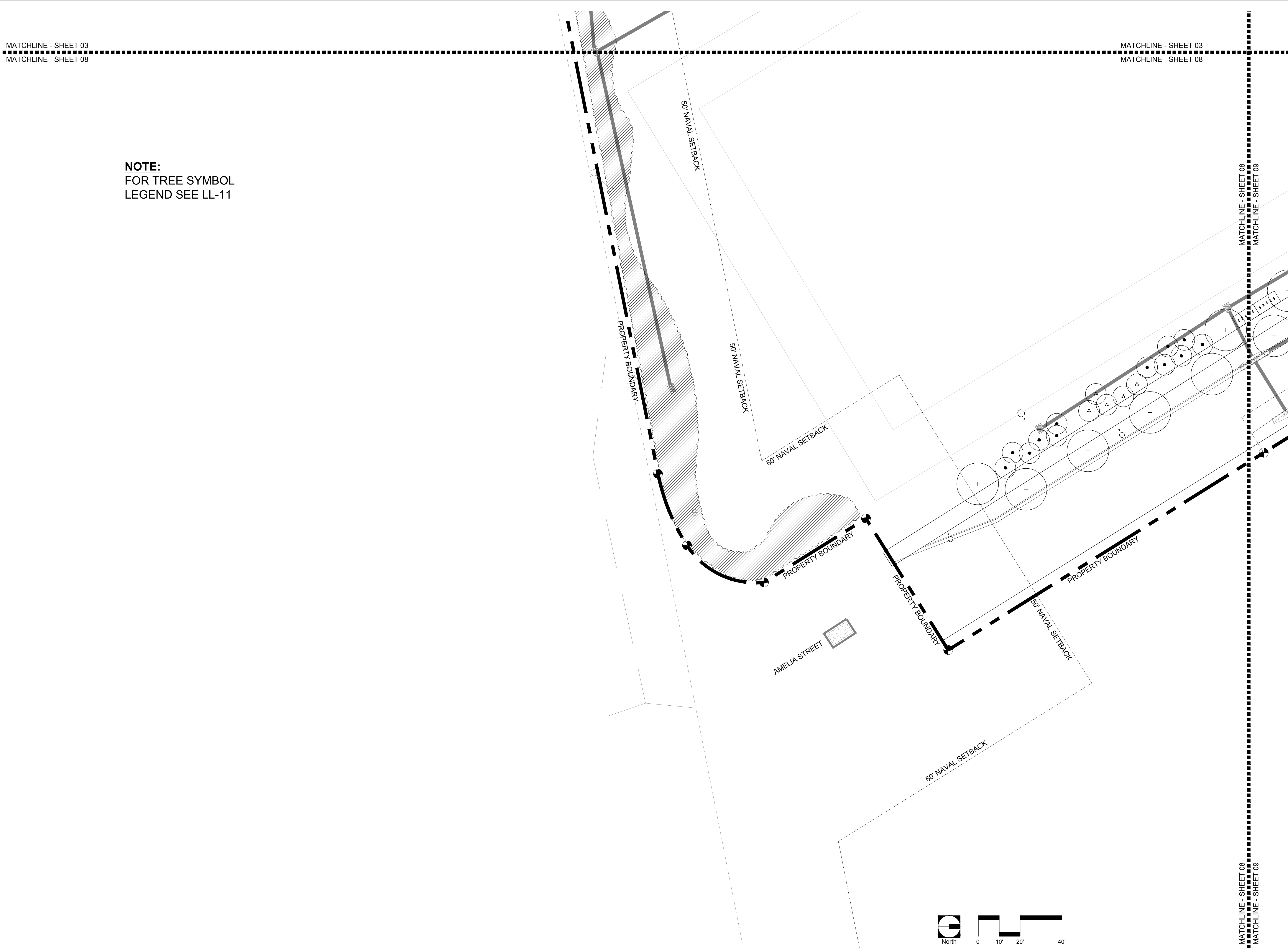
NOTE:
FOR TREE SYMBOL
LEGEND SEE LL-11



MATCHLINE - SHEET 03
MATCHLINE - SHEET 08

MATCHLINE - SHEET 03
MATCHLINE - SHEET 08

NOTE:
FOR TREE SYMBOL
LEGEND SEE LL-11



**BERMELLO AJAMIL
& PARTNERS • INC**

Architecture • Engineering • Planning
Interior Design • Landscape Architecture
2601 South Bayshore Drive
Suite 1000
Miami, Florida 33133
(305) 859-2050
Fax (305) 860-3700

PREPARED FOR/OWNER:
CITY OF KEY WEST, FL
P. O. BOX 1409
3140 FLAGLER AVENUE
KEY WEST, FL 33041

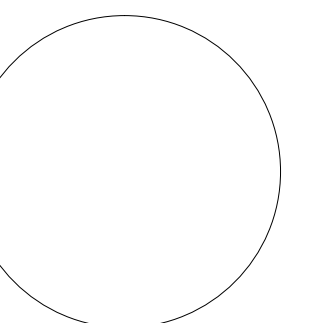


PROJECT NAME:
**TRUMAN
WATERFRONT
PARK**

PROJECT LOCATION/ADDRESS:
TRUMAN WATERFRONT PARK
WEST OF FORT STREET AND THE
TRUMAN ANNEX DEVELOPMENT,
NORTH OF KEY WEST NAVAL BASE

SUB-CONSULTANT INFORMATION:

PROFESSIONAL SEAL:



KIRK J. OLNEY
FLORIDA REGISTERED LANDSCAPE
LA0001705

SUBMITTAL DESCRIPTION / MILESTONE:

**DEVELOPMENT
APPLICATION
March 3, 2014**

REVISIONS:

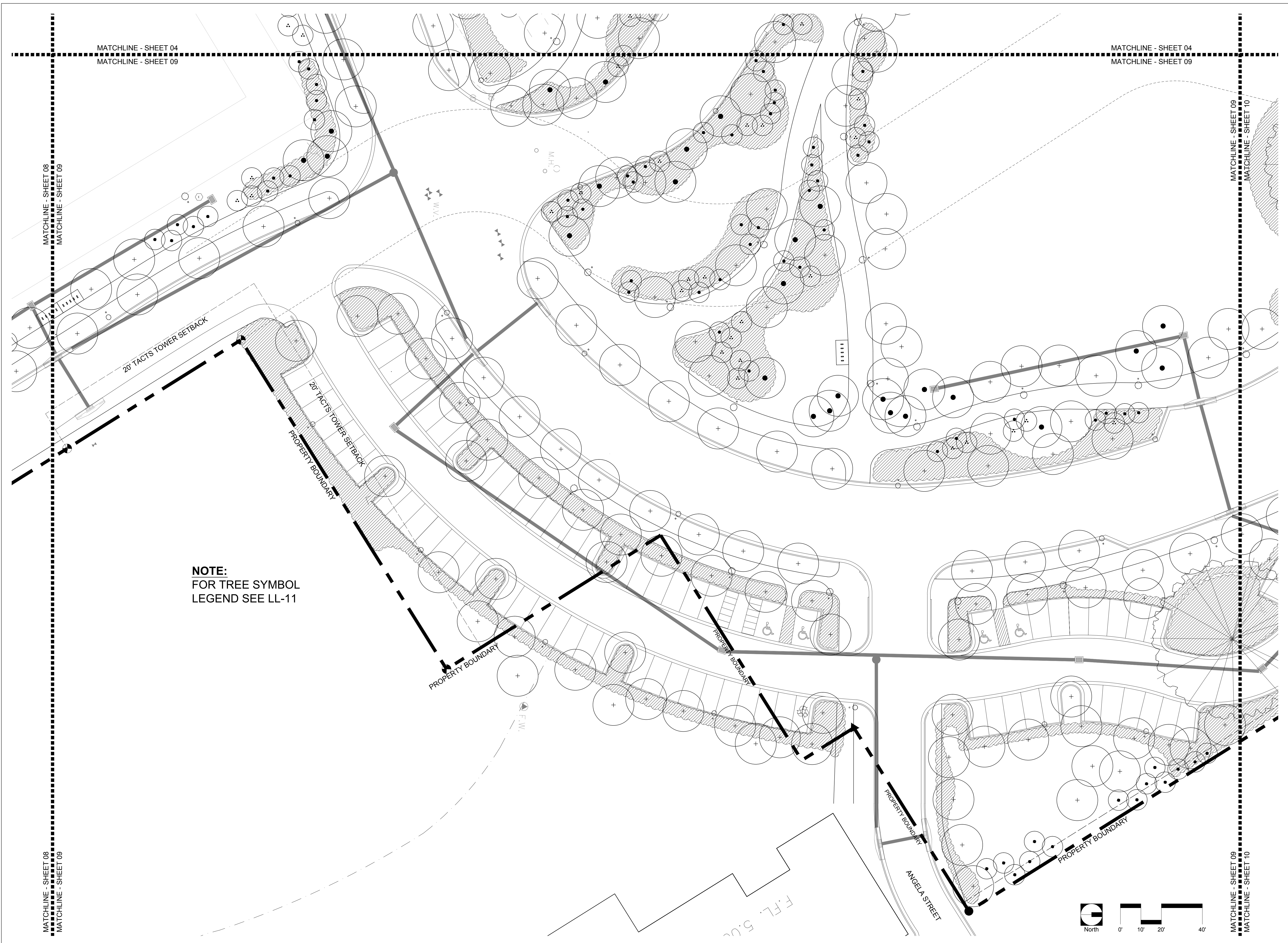
DRAWING SHEET INFORMATION

BA PROJECT NO.: 12010
SCALE: 1" = 20'-0"
DATE: February 12, 2014
DRAWN BY: KJO
CHECKED BY: RPH
CADD FILE: X:\Truman Waterfront Base.dwg

DRAWING TITLE:
**LANDSCAPE
PLAN**

SHEET NO.

LL-08



BERMELLO AJAMIL & PARTNERS • INC
 Architecture • Engineering • Planning
 Interior Design • Landscape Architecture
 2601 South Bayshore Drive
 Suite 1000
 Miami, Florida 33133
 (305) 859-2050
 Fax (305) 860-3700

PREPARED FOR/OWNER:
CITY OF KEY WEST, FL
 P. O. BOX 1409
 3140 FLAGLER AVENUE
 KEY WEST, FL 33041

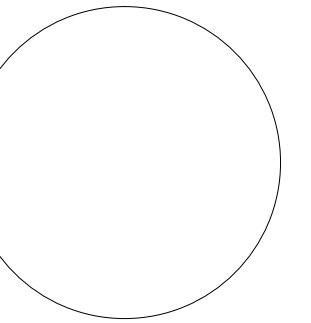


PROJECT NAME:
TRUMAN WATERFRONT PARK

PROJECT LOCATION/ADDRESS:
**TRUMAN WATERFRONT PARK
 WEST OF FORT STREET AND THE
 TRUMAN ANNEX DEVELOPMENT,
 NORTH OF KEY WEST NAVAL BASE**

SUB-CONSULTANT INFORMATION:

PROFESSIONAL SEAL:



KIRK J. OLNEY
 FLORIDA REGISTERED LANDSCAPE
 ARCHITECT
 LA0001705

SUBMITTAL DESCRIPTION / MILESTONE:

**DEVELOPMENT APPLICATION
 March 3, 2014**

REVISIONS:

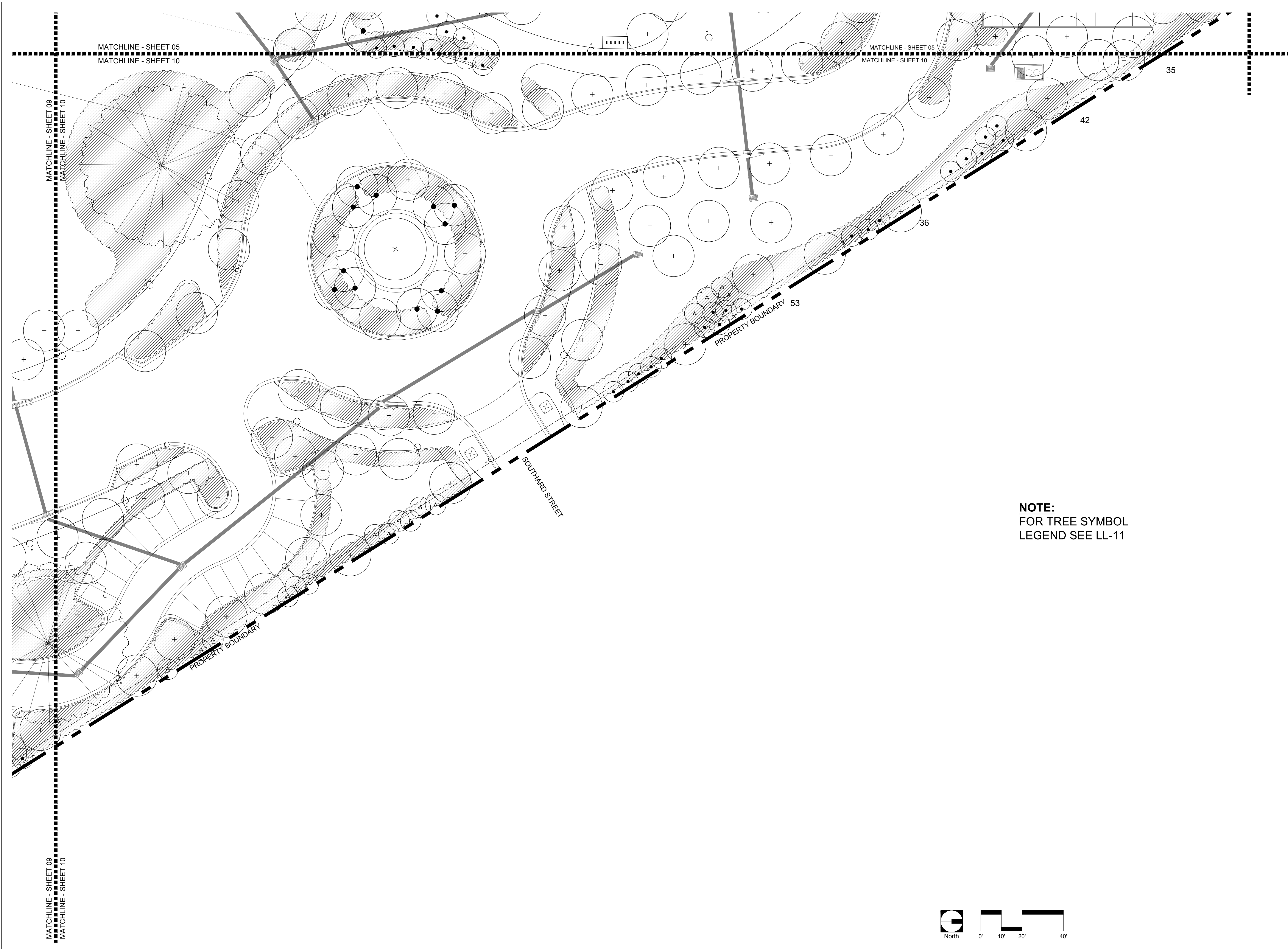
DRAWING SHEET INFORMATION

BA PROJECT NO.: 12010
 SCALE: 1" = 20'-0"
 DATE: February 12, 2014
 DRAWN BY: KJO
 CHECKED BY: RPH
 CADD FILE: X:\Truman Waterfront Base.dwg

DRAWING TITLE:
LANDSCAPE PLAN

SHEET NO.

LL-09



**BERMELLO AJAMIL
& PARTNERS • INC**

Architecture • Engineering • Planning
Interior Design • Landscape Architecture
2601 South Bayshore Drive
Suite 1000
Miami, Florida 33133
(305) 859-2050
Fax (305) 860-3700

PREPARED FOR/OWNER:
CITY OF KEY WEST, FL
P. O. BOX 1409
3140 FLAGLER AVENUE
KEY WEST, FL 33041



PROJECT NAME:

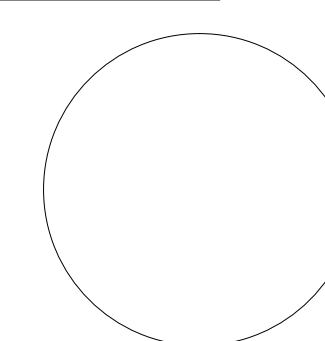
**TRUMAN
WATERFRONT
PARK**

PROJECT LOCATION/ADDRESS:

TRUMAN WATERFRONT PARK
WEST OF FORT STREET AND THE
TRUMAN ANNEX DEVELOPMENT,
NORTH OF KEY WEST NAVAL BASE

SUB-CONSULTANT INFORMATION:

PROFESSIONAL SEAL:



KIRK J. OLNEY
FLORIDA REGISTERED LANDSCAPE
LA0001705

SUBMITTAL DESCRIPTION / MILESTONE:

**DEVELOPMENT
APPLICATION
March 3, 2014**

REVISIONS:

DRAWING SHEET INFORMATION

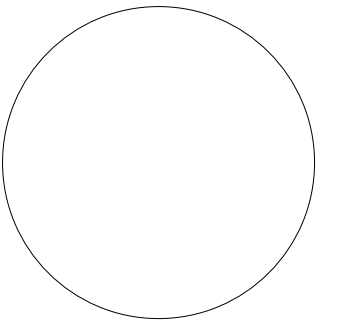
BA PROJECT NO.: 12010
SCALE: AS NOTED
DATE: February 12, 2014
DRAWN BY: KJO
CHECKED BY: RPH
CADD FILE: X:\Truman Waterfront Base.dwg

DRAWING TITLE:

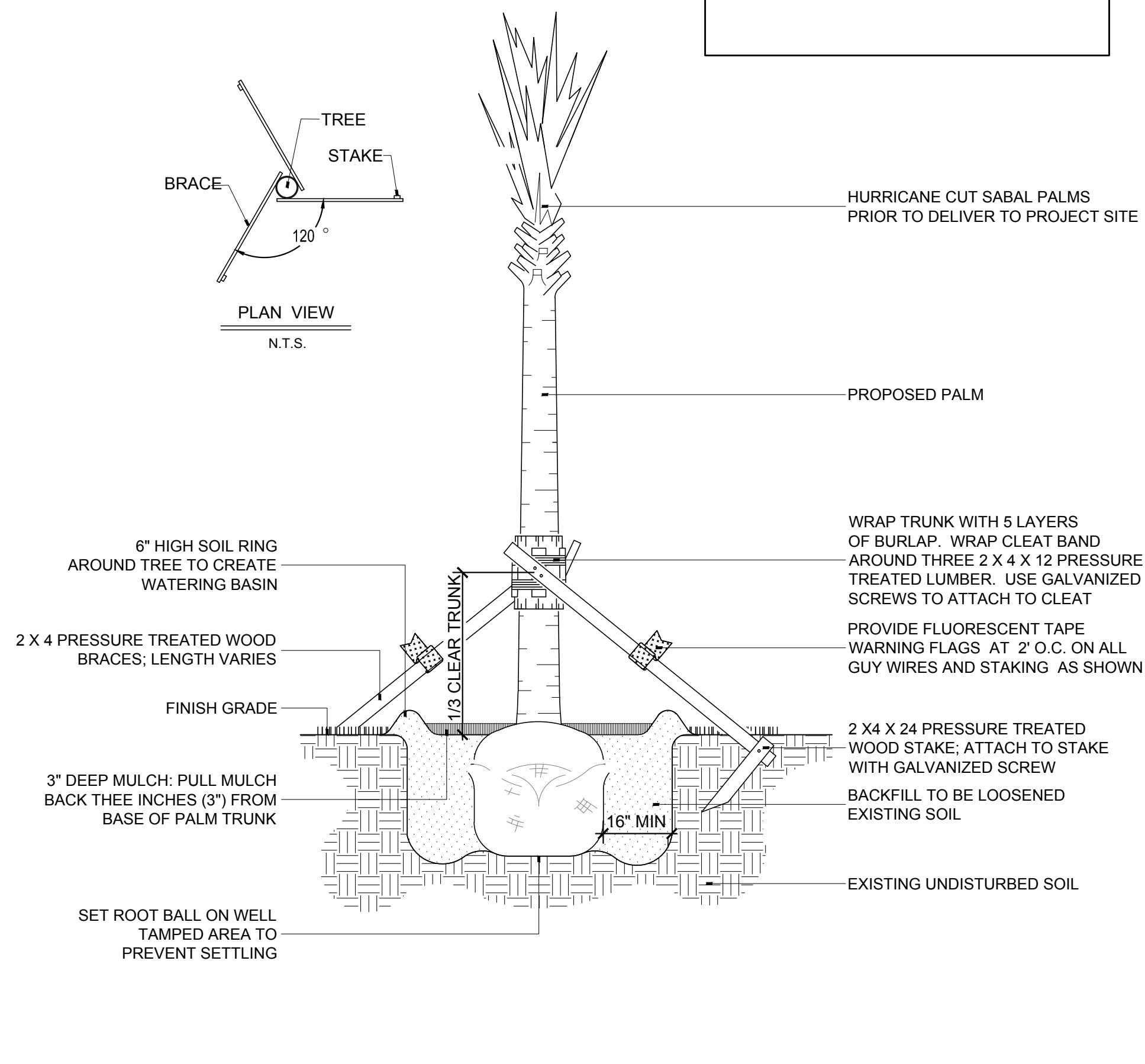
**LANDSCAPE
PLAN**

SHEET NO.

LL-10

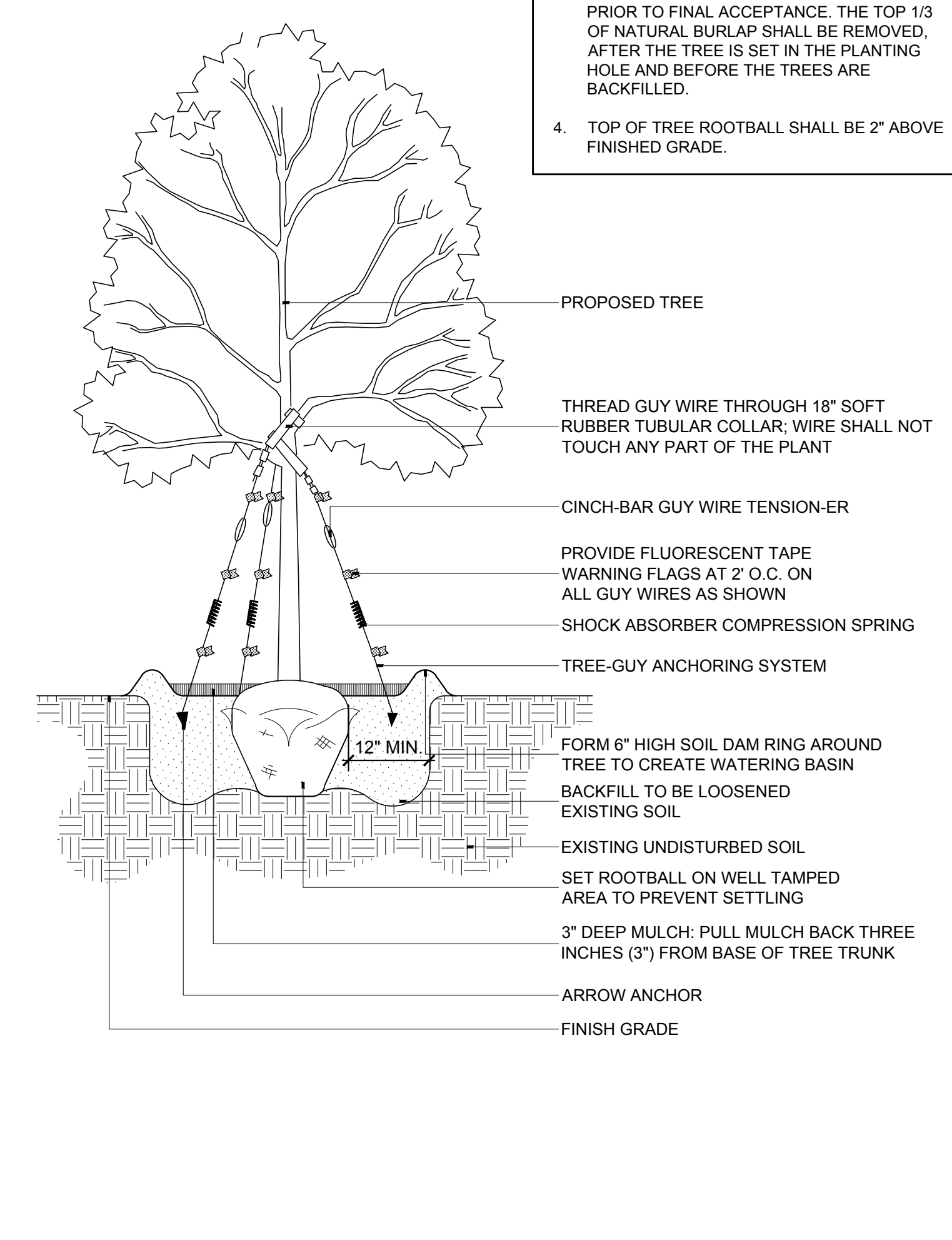


- PALM INSTALLATION NOTES:**
1. CABBAGE PALMS TO HAVE HURRICANE CUT.
 2. ALL PALMS ARE TO BE PLANTED WITH THE ROOT-BALL 1"-2" ABOVE FINISHED GRADE.
 3. ALL PLANTING AREAS AND PLANTING PITS SHALL BE TESTED FOR SUFFICIENT PERCOLATION (AT A RATE OF 1" OF STANDING WATER IN 10 MINUTES) PRIOR TO INSTALLATION OF PLANT MATERIAL TO ENSURE SUFFICIENT DRAINAGE.
 4. PLANT BEDS COMPACTED BY EQUIPMENT AND MACHINERY SHALL BE LOOSENEED SO THAT THE SPECIFIED DRAINAGE/PERCOLATION RATE IS ACHIEVED.
 5. TOP OF ROOTBALL SHALL BE 2" ABOVE FINISH GRADE.

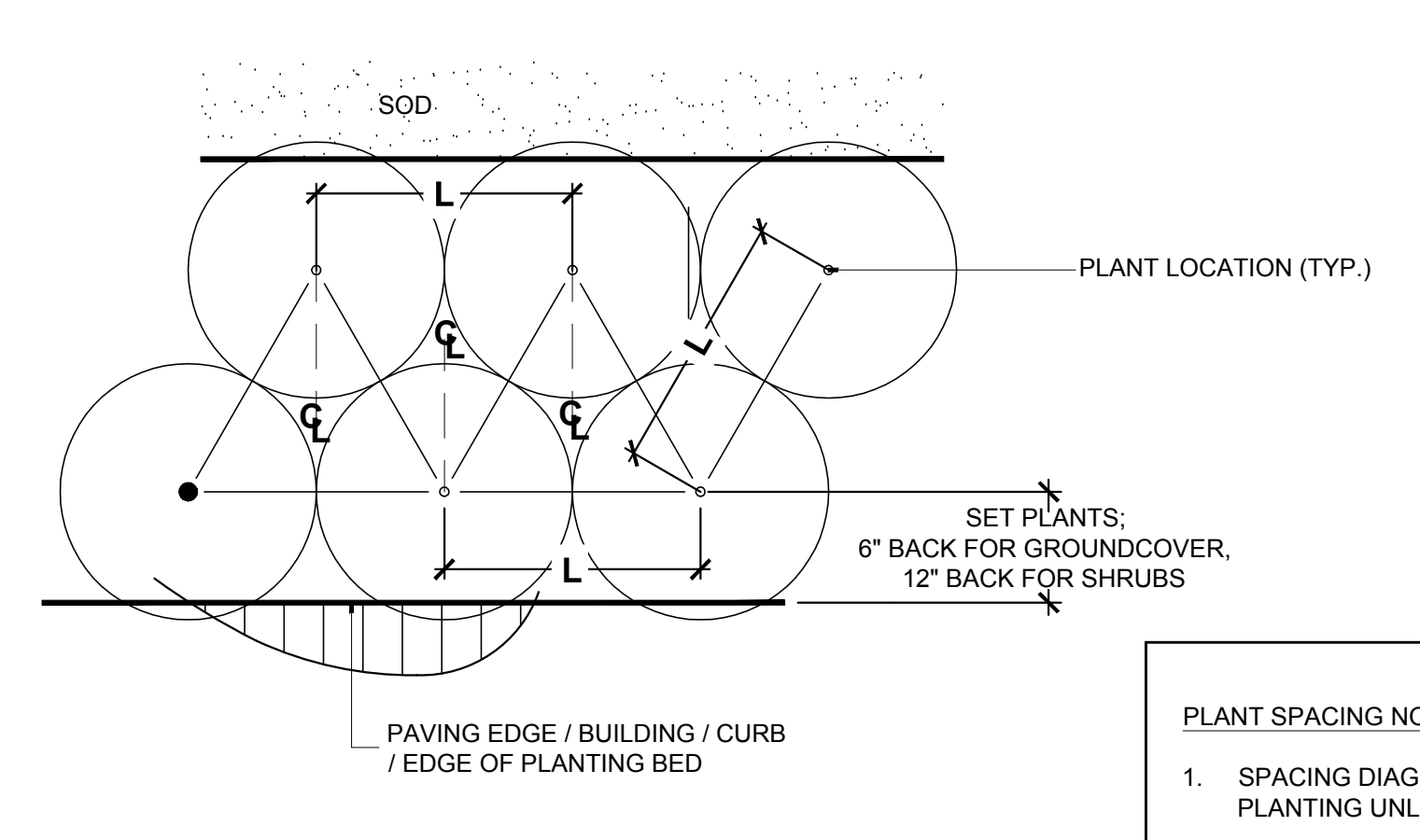


1 SABAL PALM PLANTING DETAIL
LL-12 SCALE: N.T.S

- TREE INSTALLATION NOTES:**
1. ALL PLANTING AREAS AND PLANTING PITS SHALL BE TESTED FOR SUFFICIENT PERCOLATION (AT A RATE OF 1" OF STANDING WATER IN 10 MINUTES) PRIOR TO INSTALLATION OF PLANT MATERIAL TO ENSURE SUFFICIENT DRAINAGE.
 2. PLANT BEDS IN PARKING LOTS AND IN AREAS COMPACTED BY EQUIPMENT AND MACHINERY SHALL BE LOOSENEED SO THAT THE SPECIFIED DRAINAGE/PERCOLATION RATE IS ACHIEVED.
 3. ALL SYNTHETIC BURLAP, STRING, CORDS OR WIRE BASKETS SHALL BE REMOVED BEFORE TREES ARE PLANTED, WITHOUT BREAKING THE SOIL BALL. ALL SYNTHETIC TAPE SHALL BE REMOVED FROM BRANCHES AND TRUNKS PRIOR TO FINAL ACCEPTANCE. THE TOP 1/3 OF NATURAL BURLAP SHALL BE REMOVED, AFTER THE TREE IS SET IN THE PLANTING HOLE AND BEFORE THE TREES ARE BACKFILLED.
 4. TOP OF TREE ROOTBALL SHALL BE 2" ABOVE FINISHED GRADE.



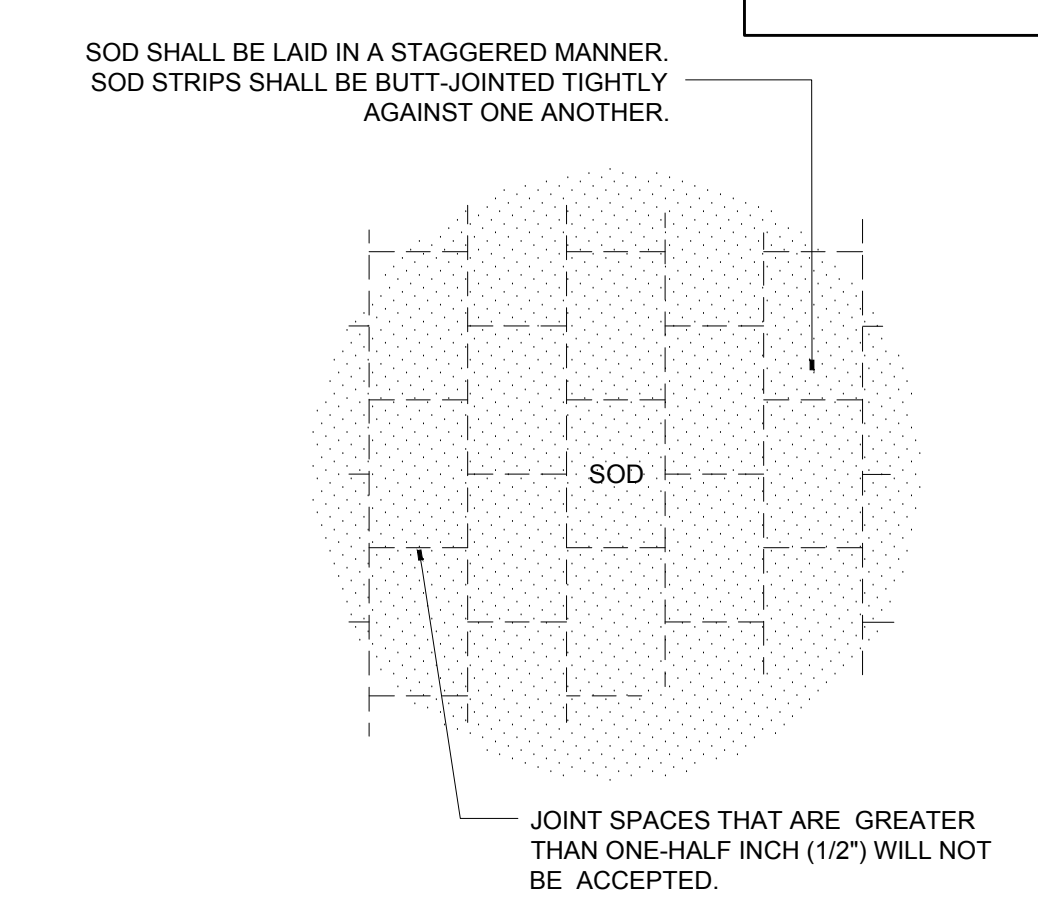
3 TREE PLANTING DETAIL
LL-12 SCALE: N.T.S



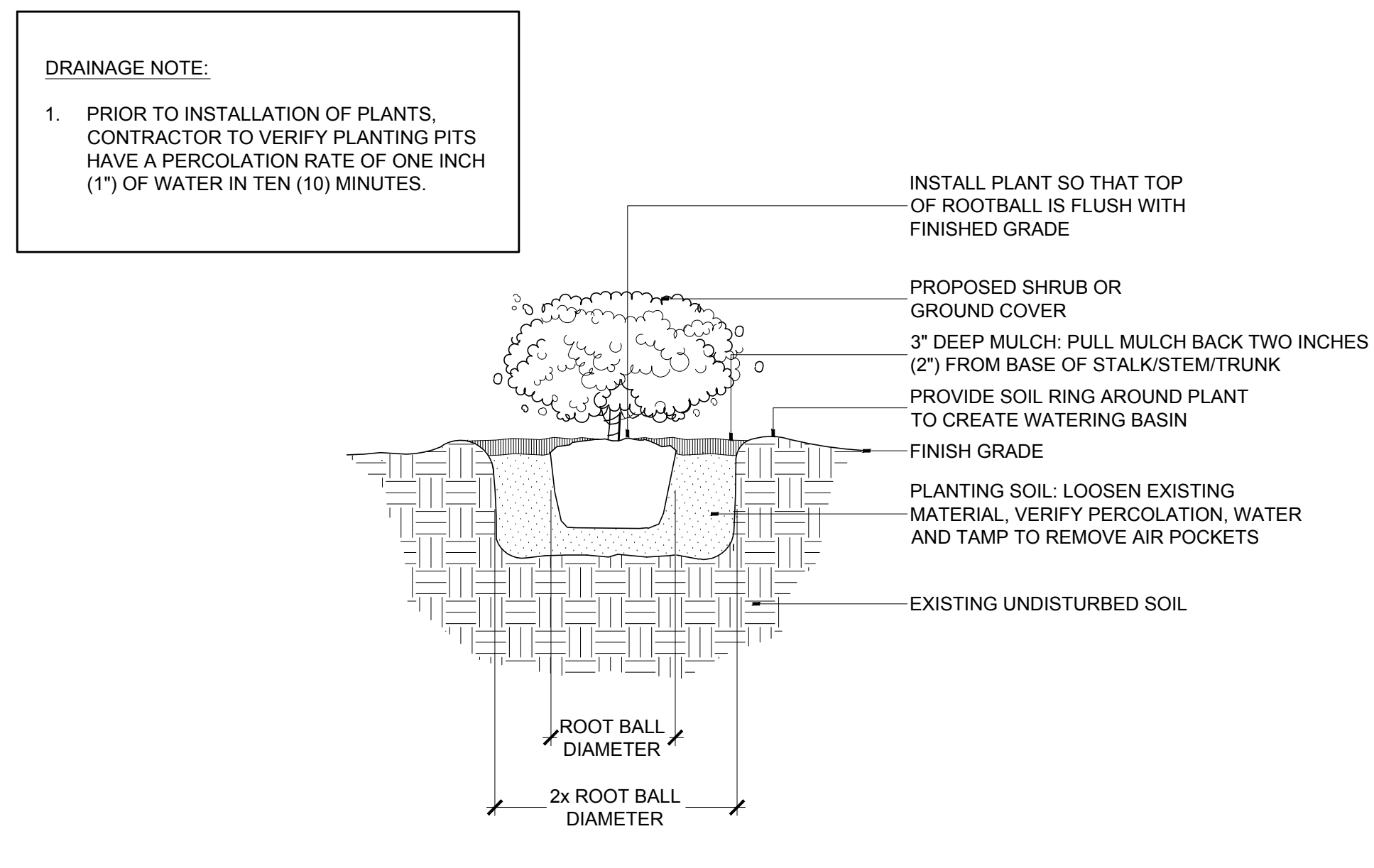
5 SHRUB AND GROUND COVER LAYOUT DETAIL
LL-12 SCALE: N.T.S

- PLANT SPACING NOTES:**
1. SPACING DIAGRAM REFERS TO ALL PLANTING UNLESS NOTED OTHERWISE
 2. L= SPACING AS CALLED FOR IN PLANTING PLAN AND PLANT LIST

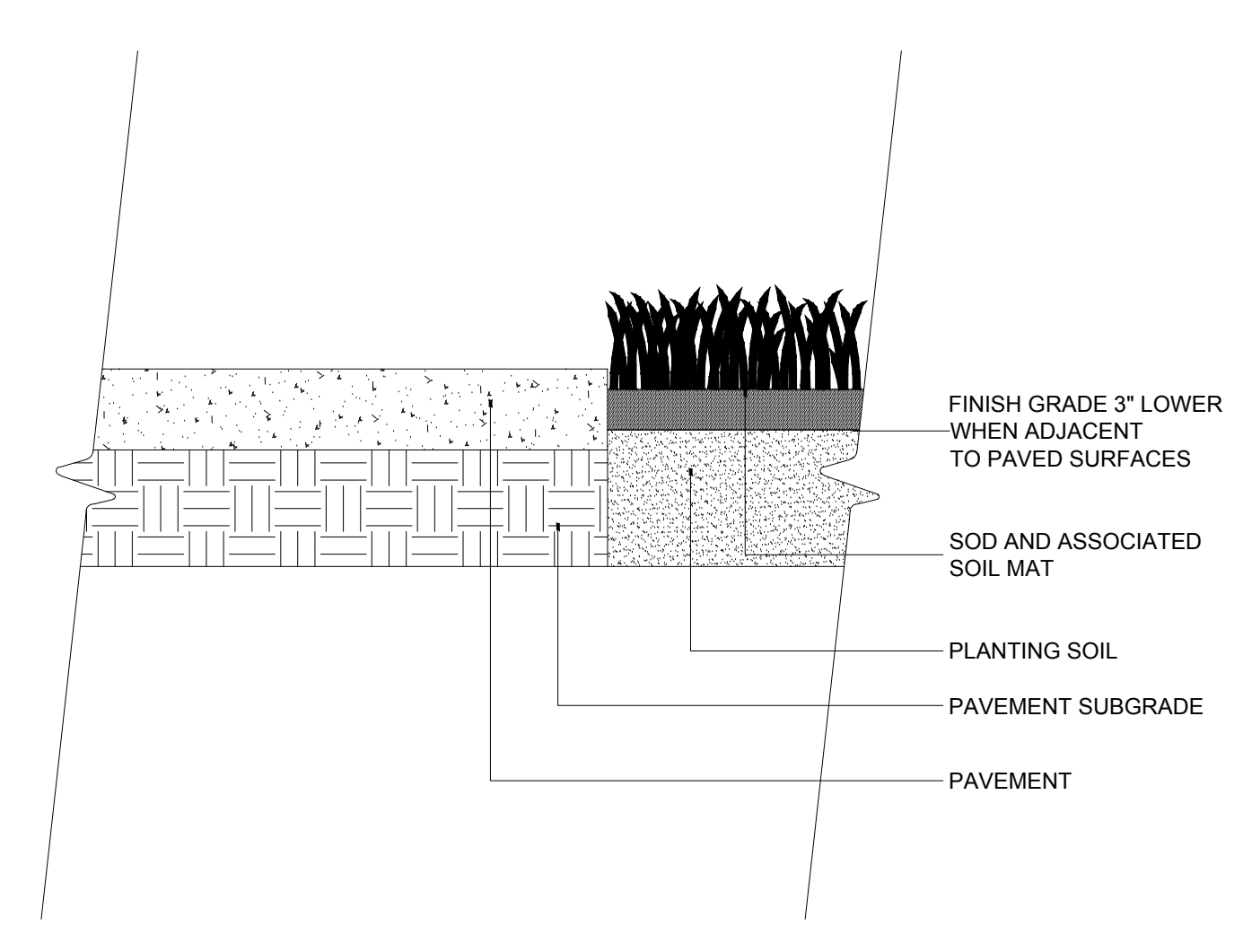
- SOD LAYOUT AND INSTALLATION NOTES:**
1. WHERE SOD IS PROPOSED ADJACENT TO CURB, SIDEWALKS, FURNITURE PADS OR PAVEMENT, FINISH GRADE SHALL BE 3" LOWER PRIOR TO INSTALLATION OF SAID SOD.



6 SOD LAYOUT AND INSTALLATION DETAIL
LL-12 SCALE: N.T.S



2 SHRUB AND GROUND COVER PLANTING DETAIL
LL-12 SCALE: N.T.S



4 SOD INSTALLATION DETAIL
LL-12 SCALE: N.T.S

1. A 100% FULL COVERAGE SYSTEM SHALL BE PROVIDED FOR ALL PROPOSED LANDSCAPE.
2. IRRIGATION SYSTEM SHALL BE DESIGNED TO MAXIMIZE WATER CONSERVATION AND SHALL CONFORM TO CHAPTER 74, ARTICLE 3, SUBDIVISION 2, SECTION 74-295 THROUGH SECTION 74-300 AND CHAPTER 108, ARTICLE VI, DIVISION 4, SECTION 108-515 OF THE CITY OF KEY WEST, FLORIDA CODE OF ORDINANCES.

7 IRRIGATION NOTES
LL-12 SCALE: N/A