



THE CITY OF KEY WEST  
Tree Commission

Post Office Box 1409 - Key West, FL 33041-1409  
Telephone: 305-809-3723

---

July 31, 2017

Ocean Walk Key West Owner LLC  
119 Washington Avenue  
Suite 505  
Miami Beach FL 33139

To Whom It May Concern:

The City of Key West Tree Commission recently considered your permit application, T17-8487, for Final Landscape Design with Tree Removal for 3900 S Roosevelt Blvd, Key West, Florida, at their regularly scheduled meeting on July 11, 2017.

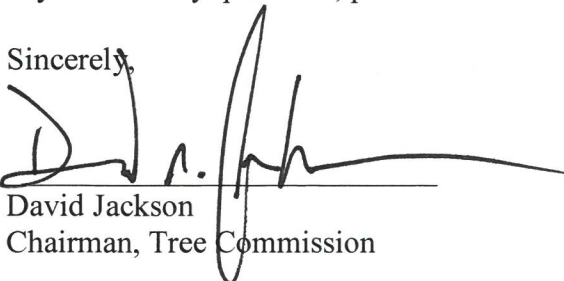
The Tree Commission conceptually approved the Final Landscape Plan with Tree Removal to include the removal of (17) Buttonwood, (8) Mahogany, (6) Pongam, (5) Blackbead, (4) Autograph, (2) Blolly, (2) Poisonwood, (2) Verawood, (1) Gumbo Limbo, (1) Pigeon Plum, (1) Shortleaf Fig, (1) Spanish Stopper, and (3) Alexander Palms, as identified in the existing tree maps and list, to be replaced with 664" caliper inches of approved native dicot trees, FL#1, and (3) native palms, 4 foot tall and the transplantation of (3) Autograph Trees, (2) Buttonwood trees, (40) Coconut palms, (8) Christmas palms, (7) Alexander palms, and (1) Date palm to be incorporated into the approved landscape plan. The Tree Commission requested more trees in the parking areas and required that all the required replacement inches be incorporated into the landscape plan. Their vote also stated that the Urban Forestry Manager would make the final approval once the updated plan is received.

On July 28, 2017, an updated Final Landscape Plan was received and reviewed by the Urban Forester. The updated Final Landscape Plan dated July 24, 2017 is approved.

**The permits to actually remove these trees will not be issued until demolition and/or building permits have been issued for each phase of the project.**

If you have any questions, please call the office at (305) 809-3768.

Sincerely,



David Jackson  
Chairman, Tree Commission

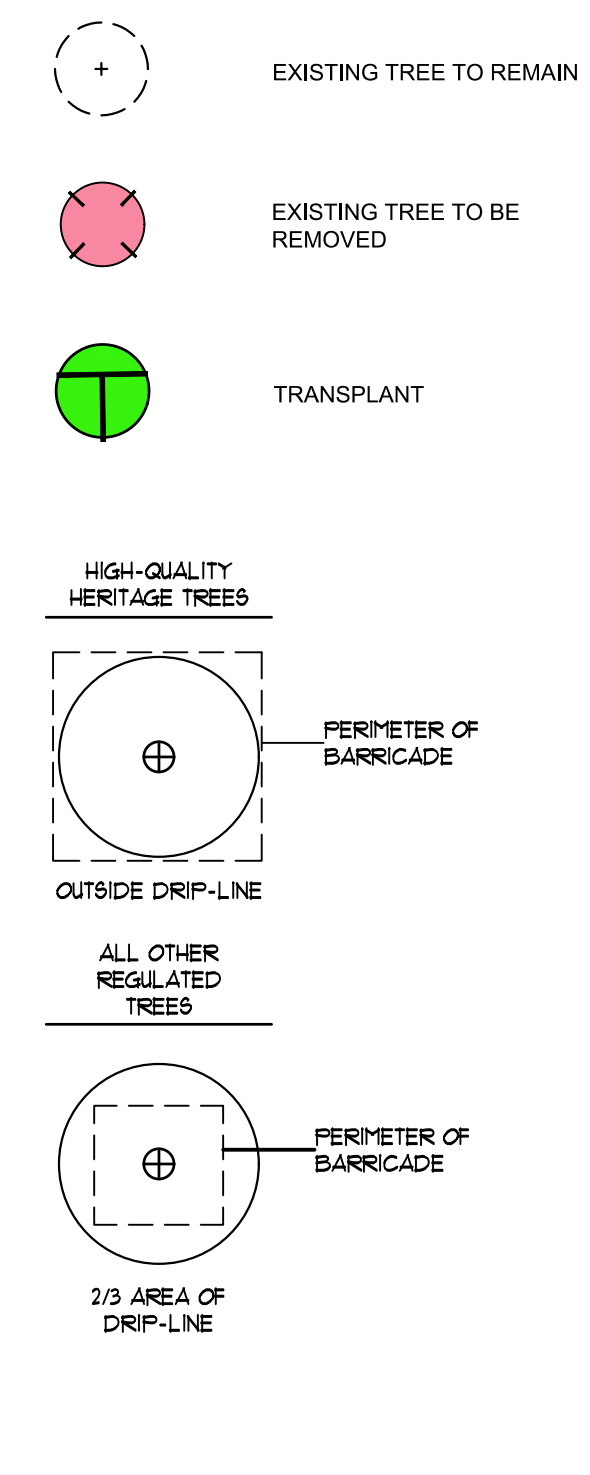


Karen DeMaria  
Urban Forestry Manager  
[kdemaria@cityofkeywest-fl.gov](mailto:kdemaria@cityofkeywest-fl.gov)

G:\Projects\2016\527116021\dwg\_Construction\527116021-10.01.dwg-10.01 Jul 28, 2017 - 3:54pm imarcan



**LEGEND & SYMBOLS**



MAP ID	Latin Name	Common Name	DBH / Clear Wood (ft)	Regulated	Impact
P1	Cocos nucifera	Coconut Palm	15.1	REG	Transplant
P2	Cocos nucifera	Coconut Palm	4	REG	Transplant
P3	Cocos nucifera	Coconut Palm	6.2	REG	Transplant
P4	Cocos nucifera	Coconut Palm	3	REG	Transplant
P5	Phoenix canariensis	Canary Island Date Palm	5	N	Remove
P6	Cocos nucifera	Coconut Palm	2	REG	Transplant
P7	Cocos nucifera	Coconut Palm	2.5	REG	Transplant
P8	Cocos nucifera	Coconut Palm	6.7	REG	Transplant
P9	Phoenix roebelenii	Pygmy Date Palm	6.5	N	Remove
P10A	Adonia merillii	Christmas Palm	11.8	REG	Transplant
P10B	Adonia merillii	Christmas Palm	11.8	REG	Transplant
P11A	Adonia merillii	Christmas Palm	11.8	REG	Transplant
P11B	Adonia merillii	Christmas Palm	11.8	REG	Transplant
P12	Phoenix canariensis	Canary Island Date Palm	9.1	N	Remove
P13A	Adonia merillii	Christmas Palm	11.1	REG	Transplant
P13B	Adonia merillii	Christmas Palm	11.1	REG	Transplant
P14A	Adonia merillii	Christmas Palm	11.1	REG	Transplant
P14B	Adonia merillii	Christmas Palm	11.1	REG	Transplant
P15	Cocos nucifera	Coconut Palm	2	REG	Transplant
P16	Cocos nucifera	Coconut Palm	4	REG	Transplant
P17	Phoenix canariensis	Canary Island Date Palm	4	N	Remove
P18	Cocos nucifera	Coconut Palm	1	REG	Transplant
P19	Cocos nucifera	Coconut Palm	1	REG	Transplant
P20	Cocos nucifera	Coconut Palm	3	REG	Transplant
P21	Cocos nucifera	Coconut Palm	15.4	REG	Transplant
P22	Cocos nucifera	Coconut Palm	15.4	REG	Transplant
P23	Cocos nucifera	Coconut Palm	15.9	REG	Transplant
P24	Cocos nucifera	Coconut Palm	15.9	REG	Transplant
P25	Cocos nucifera	Coconut Palm	13.2	REG	Transplant
P26	Cocos nucifera	Coconut Palm	24.2	REG	Transplant
P27	Cocos nucifera	Coconut Palm	18.5	REG	Transplant
P28	Cocos nucifera	Coconut Palm	15.4	REG	Transplant
P29	Cocos nucifera	Coconut Palm	17.1	REG	Transplant
P30	Cocos nucifera	Coconut Palm	25.3	REG	Transplant
P31	Cocos nucifera	Coconut Palm	21	REG	Transplant
P32	Cocos nucifera	Coconut Palm	17.9	REG	Transplant
P33	Cocos nucifera	Coconut Palm	15.11	REG	Transplant
P34	Cocos nucifera	Coconut Palm	16.1	REG	Transplant
P35	Cocos nucifera	Coconut Palm	16.1	REG	Transplant
P36	Cocos nucifera	Coconut Palm	20.11	REG	Transplant
P37	Cocos nucifera	Coconut Palm	23.3	REG	Transplant
P38	Cocos nucifera	Coconut Palm	20.6	REG	Transplant
P39	Cocos nucifera	Coconut Palm	18.7	REG	Transplant
P40	Cocos nucifera	Coconut Palm	15.4	REG	Transplant
P41	Cocos nucifera	Coconut Palm	18.1	REG	Transplant
P42	Cocos nucifera	Coconut Palm	19.2	REG	Transplant
P43	Bismarckia nobilis	Bismarck Palm	1	N	Remove
P44	Bismarckia nobilis	Bismarck Palm	1	N	Remove
P45	Bismarckia nobilis	Bismarck Palm	2	N	Remove
P46	Bismarckia nobilis	Bismarck Palm	2	N	Remove
P47	Phoenix canariensis	Canary Island Date Palm	5.7	N	Remove
P48	Cocos nucifera	Coconut Palm	18.7	REG	Transplant
P49	Cocos nucifera	Coconut Palm	20.9	REG	Transplant
P50	Cocos nucifera	Coconut Palm	18.1	REG	Transplant
P51	Cocos nucifera	Coconut Palm	18.1	REG	Transplant
P52	Psychosperma elegans	Alexander Palm	19.11	REG	Remove
P53	Phoenix canariensis	Canary Island Date Palm	9.1	N	Transplant
P54	Phoenix canariensis	Canary Island Date Palm	10.8	REG	Transplant
P55	Cocos nucifera	Coconut Palm	17.6	REG	Remove
P56	Phoenix canariensis	Canary Island Date Palm	4	N	Remove
P57	Cocos nucifera	Coconut Palm	17.2	REG	Remove
P58	Psychosperma elegans	Alexander Palm	19	REG	Remove
P59	Psychosperma elegans	Alexander Palm	15	REG	Remove
P60A	Psychosperma elegans	Alexander Palm	15.5	REG	Remove
P60B	Psychosperma elegans	Alexander Palm	15.5	REG	Remove
P61	Bismarckia nobilis	Bismarck Palm	2	N	Transplant
P62	Psychosperma elegans	Alexander Palm	15	REG	Remove
P63	Psychosperma elegans	Alexander Palm	15	REG	Remove
P64	Cocos nucifera	Coconut Palm	17.11	REG	Transplant
P65A	Phoenix roebelenii	Pygmy Date Palm	6	N	Remove
P65B	Phoenix roebelenii	Pygmy Date Palm	6	N	Remove

Total Palms	70
Total Regulated Palms	56
Regulated Palms to Remain	6
Regulated Palms Transplanted	47
Regulated Palms to be Removed	3
Total Regulated Palms Provided	53
Not Regulated Palms to be Transplanted	4
Not Regulated Palms to be Removed	9
Not Regulated Palms to Remain	1

MAP ID	Latin Name	Common Name	DBH / Clear Wood (ft)	Existing Condition	Impact	Regulated	Location	Species	Condition	Value	Total
1	Clusia rosea	Autograph Tree	2.2	Good	Remove	REG	90	100	80	90	2.0
2	Clusia rosea	Autograph Tree	2.2	Good	Remove	REG	90	100	80	90	2.0
3	Clusia rosea	Autograph Tree	2.5	Good	Remove	REG	90	100	80	90	2.3
4	Clusia rosea	Autograph Tree	2.8	Good	Remove	REG	90	100	80	90	2.5
5	Pongamia pinnata	Pongam Tree	10	Good	Remove	REG	50	80	73	7.3	
6	Conocarpus erectus	Buttonwood	26.6	Good	Remove	REG	100	100	80	93	24.7
7	Conocarpus erectus	Buttonwood	13.5	Good	Remove	REG	100	100	80	93	12.6
8	Pithecellobium keyense	Blackbead	19	Good	Remove	REG	100	100	80	93	17.7
9	Conocarpus erectus	Buttonwood	66.3	Good	Remove	REG	100	100	80	93	61.7
10	Pongamia pinnata	Pongam Tree	12.1	Good	Remove	REG	90	50	80	73	8.8
11	Pongamia pinnata	Pongam Tree	10.3	Good	Remove	REG	90	50	80	73	7.5
12	Pongamia pinnata	Pongam Tree	19.4	Good	Remove	REG	90	50	80	73	14.2
13	Pithecellobium keyense	Blackbead	0.2	Good	Remove	REG	100	100	80	93	0.2
14	Erihalia fruticosa	Blacktooth	1.8	Fair	Remove	---	---	---	---	---	0.0
15	Pithecellobium keyense	Blackbead	0.8	Good	Remove	REG	100	100	80	93	0.7
16	Conocarpus erectus	Buttonwood	38.6	Good	Remove	REG	100	100	80	93	35.9
17	Guajira discolor	Bibely	1	Good	Remove	REG	100	100	80	93	0.9
18	Eugenia foetida	Spanish Stopper	2	Good	Remove	REG	100	100	80	93	1.9
19	Conocarpus erectus	Buttonwood	13.3	Good	Remove	REG	100	100	80	90	12.0
20	Pithecellobium keyense	Blackbead	9	Good	Remove	REG	100	100	80	93	8.4
21	Guajira discolor	Bibely	14	Good	Remove	REG	100	100	80	93	13.0
22	Pongamia pinnata	Pongam Tree	3	Good	Remove	---	---	---	---	---	0.0
23	Ficus dritifolia	Shortleaf Fig	4	Good	Remove	REG	100	100	80	93	3.7
24	Conocarpus erectus	Buttonwood	52	Good	Remove	REG	100	100	80	93	48.4
25	Conocarpus erectus	Buttonwood	20	Poor	Remove	REG	100	100	40	80	16.0
26	Bunera simariba	Gumbo Limbo	4.8	Good	Remove	REG	100	100	80	93	4.5
27	Metopium toxiferum	Poisonwood	5	Good	Remove	REG	100	100	80	93	4.7
28	Pongamia pinnata	Pongam Tree	6	Good	Remove	REG	100	50	80	77	4.6
29	Metopium toxiferum	Poisonwood	5	Good	Remove	REG	100	100	80	93	4.7
30	Conocarpus erectus	Buttonwood	32.8	Good	Remove	REG	100	100	80	93	30.5
31	Conocarpus erectus	Buttonwood	13	Good	Remove	REG	100	100	80	93	12.1
32	Conocarpus erectus	Buttonwood	3.5	Good	Remove	REG	100	100	80	93	3.3
33	Conocarpus erectus	Buttonwood	13.5	Good	Remove	REG	100	100	80	93	12.6
34	Conocarpus erectus	Buttonwood	7	Good	Remove	REG	100	100	80	93	6.5
35	Conocarpus erectus	Buttonwood	14.5	Good	Remove	REG	100	100	80	93	13.5
36	Conocarpus erectus	Buttonwood	11.5	Good	Remove	REG	100	100	80	93	10.7
37	Pithecellobium keyense	Blackbead	1	Good	Remove	REG	100	100	80	93	0.9
38	Swietenia mahagoni	Mahogany	10.2	Poor	Remove	REG	80	100	40	73	7.4
39	Swietenia mahagoni	Mahogany	12.6	Good	Remove	REG	80	100	80	87	11.0
40	Swietenia mahagoni	Mahogany	14.9	Good	Remove	REG	80	100	80	87	13.0
41	Swietenia mahagoni	Mahogany	13.6	Good	Remove	REG	80	100	80	87	11.8
42	Conocarpus erectus	Buttonwood	15.6	Good	Remove	REG	80	100	80	87	13.6
43	Swietenia mahagoni	Mahogany	20.5	Poor	Remove	REG	80	100	40	73	15.0
44	Swietenia mahagoni	Mahogany	11.4	Poor	Remove	REG	80	100	40	73	8.5
45	Swietenia mahagoni	Mahogany	15.7	Fair	Remove	REG	80	100	60	80	12.6
46	Swietenia mahagoni	Mahogany	11.2	Fair	Remove	REG	80	100	60	80	9.0
47	Pongamia pinnata	Pongam Tree	28.2	Good	Remove	REG	80	50	80	70	19.7
48	Conocarpus erectus	Buttonwood	71.5	Good	Remove	REG	90	100	80	90	64.4
49	Conocarpus erectus	Buttonwood	52.7	Good	Remove	REG	90	100	80	90	47.4
50	Bulnesia arborea	Verawood	5.5	Good	Remove	REG	80	50	80	70	3.9
51	Bulnesia arborea	Verawood	6.5	Good	Remove	REG	80	50	80	70	4.6
52	Coccoloba diversifolia	Pigeon Plum	6.5	Good	Remove	REG	80	100	80	70	4.6
53	Coccoloba diversifolia	Pigeon Plum	6.5	Good	Remove	REG	80	100	80	87	5.7
Total "Poor/Fair" Inches Removed											91
Total "Good" Inches Removed											677
Total Mitigation Required											664
Total Inches Provided											694
Total Inches to Mitigate											-30

**PROVIDED CALCULATIONS (See Plant Schedule, L3.00)**

QTY	Latin Name	Common Name	Caliper (Inches)	Inches Provided
74	Conocarpus erectus	Buttonwood	2.0	148
18	Piscidia piscipula	Jamaican Dogwood	3.0	54
42	*Pithecellobium keyense	Florida Keys Blackbead	3.0	252
15	*Swietenia mahagoni	West Indian Mahogany	8.0	240

\* Endangered or Threatened Trees = 2 Times Caliper Inches Credit

R#	Latin Name	Common Name	Caliper (Inches)	Condition	Action
R1	Clusia rosea	Autograph Tree	3.2	Good	Transplant
R2	Clusia rosea	Autograph Tree	3	Good	Transplant
R3	Conocarpus erectus	Buttonwood	5.8	Good	Transplant
R4	Conocarpus erectus	Buttonwood	6	Good	Transplant
R5	Conocarpus erectus	Buttonwood	6	Good	Transplant
R6	Clusia rosea	Autograph Tree	3.2	Good	Transplant
R7	Viburnum sp	Viburnum	4	Good	Remain
R8	Viburnum sp	Viburnum	4	Good	Remain

**S&M E**  
 WWW.SMEINC.COM  
 1615 Edgewater Drive, Suite 200, Orlando, Florida 32804  
 T 407.973.1278 F 407.973.1276  
 Jensen D. Bair, P.E., L.S. 7380  
 Keith Orsopo, L.A. LU0001023  
 Florida Firm Registration No. F-0176

**OCEAN WALK**  
 KEY WEST, FL

REGISTERED LANDSCAPE ARCHITECT  
 LA 0001023  
 STATE OF FLORIDA

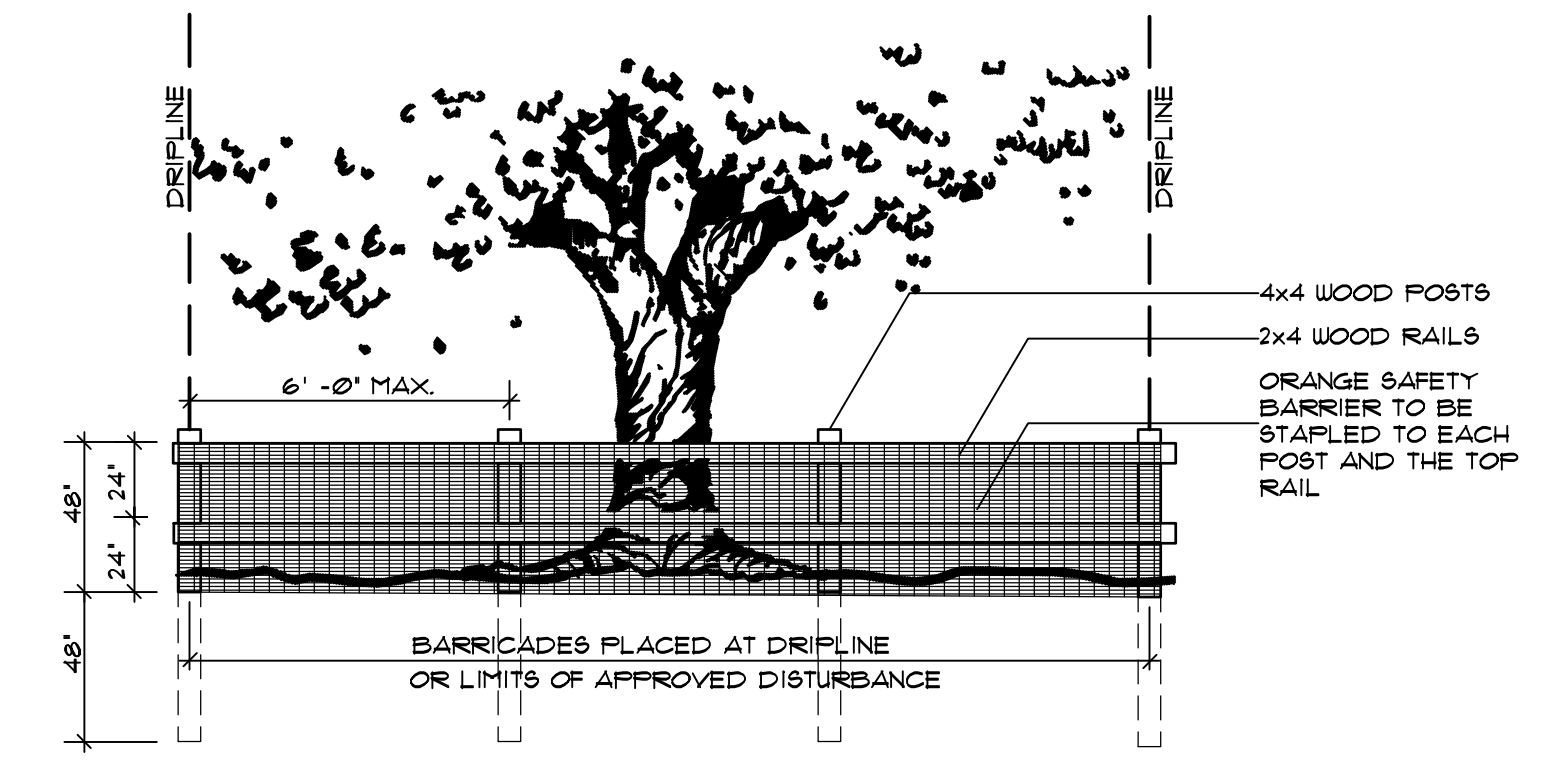
07.24.17	PER TREE COMMISSION
06.19.17	REVISED BASE
01.06.17	PER CITY COMMENTS
DATE	REVISIONS
12.30.16	

**L0.01**  
 DEMOLITION PLAN

G:\Projects\2016\527116021\dwg\Construction\527116021-10.01.dwg--L0.02 Jul 24, 2017 - 11:18am imaranon

WWW.S&ME.COM

**TREE PROTECTION- BARRIER PLACEMENT**



**TREE PROTECTION & BARRICADE ELEVATION**

**PROTECTIVE BARRIER REQUIREMENTS FOR EXISTING TREES TO REMAIN**

1. PROTECT DESIGNATED EXISTING TREES SCHEDULED TO REMAIN AGAINST:
  - UNNECESSARY CUTTING, BREAKING, OR SKINNING OF ROOTS
  - SKINNING AND BRUISING OF BARK
  - SMOTHERING OF TREES BY STOCKPILING CONSTRUCTION OR EXCAVATION MATERIALS WITHIN
2. CALL PLANNING SERVICES AT (352) 393-8188 TO SCHEDULE A BARRICADE INSPECTION BEFORE CLEARING AND GRUBBING WORK COMMENCES.
3. AUTOMATIC IRRIGATION SYSTEM SHOULD BE PROVIDED FOR THE DEVELOPMENT AND PROVIDED BUBBLERS BY EACH TREE TO BE INSTALLED FOR THE DEVELOPMENT.
4. PROTECTION BARRIERS (TREE BARRICADES) SHALL BE PLAINLY VISIBLE AND SHALL CREATE A CONTINUOUS BOUNDARY AROUND TREES OR VEGETATION CLUSTERS IN ORDER TO PREVENT ENCROACHMENT BY WOOD CHIPS AT LEAST 8 INCHES COVER THE SOIL WITHIN THE BARRICADE.
5. HIGH QUALITY HERITAGE TREES SHALL BE PROTECTED BY GALVANIZED CHAIN LINK FENCING A MINIMUM OF 48 INCHES HIGH, 11-GAUGE WIRE, AND 2 INCH MESH SIZE SECURED WITH 1-7/8" LINE POSTS NO FURTHER THAN 10 FEET APART SECURED AT A DEPTH OF 3 FEET BELOW SOIL LINE. CORNERS SHALL BE SECURED WITH 2-3/8" LINE POSTS SECURED TO A DEPTH OF 4 FEET BELOW SOIL LINE.
6. FOR ALL OTHER TREES TO BE PRESERVED, SEE DETAIL THIS SHEET
7. NO GRADE CHANGES SHALL BE MADE WITHIN THE PROTECTIVE BARRIER ZONES WITHOUT PRIOR APPROVAL OF THE CITY MANAGER OR DESIGNEE.
8. THE METHOD OF PROTECTION IS TO MAKE CERTAIN THAT 50% OF THE AREA UNDER THE CANOPY DRIPLINE REMAINS UNDISTURBED (NO GRADE CHANGE OR ROOT CUT) AND THERE SHALL BE NO DISTURBANCE TO THE ROOT PLATE.
9. WHERE ROOTS GREATER THAN ONE INCH IN DIAMETER ARE DAMAGED OR EXPOSED SHALL BE CUT CLEANLY AND RE-COVERED WITH SOIL WITHIN ONE HOUR OF DAMAGE OR EXPOSURE.
10. GENERAL CONTRACTOR SHALL BE RESPONSIBLE FOR THE REPLACEMENT AND MITIGATION COSTS OF TREES DAMAGED BEYOND REPAIR THAT HAVE BEEN IDENTIFIED AS PROTECTED AND PRESERVED. IF TREES ARE HARMED THROUGH LACK OF PROTECTION OR THROUGH NEGLIGENCE ON THE PART OF THE CONTRACTOR, THE CONTRACTOR SHALL BEAR THE BURDEN OF THE COST OF REPAIR OR REPLACEMENT.

**S&ME**  
 WWW.S&ME.COM  
 1615 Edgewater Drive, Suite 200, ORLANDO, FLORIDA 32804  
 T 407.975.1278 F 407.975.1278 www.s&me.com  
 Jason D. Barz LA 0001023  
 Keith Oropesa LA 0001023  
 Florida Firm Registration No. F-0176

**OCEAN WALK**  
 KEY WEST, FL



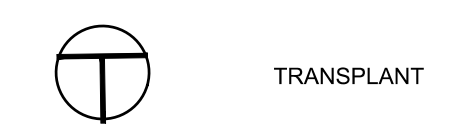
07.24.17	PER TREE COMMISSION
06.19.17	REVISED BASE
01.06.17	PER CITY COMMENTS
DATE	REVISIONS
12.30.16	

**L0.02**  
 TREE PROTECTION  
 DETAILS & NOTES

G:\Projects\2016\527116021\dwg\_Construction\527116021-L0.01.dwg - L0.03 Jul 25, 2017 - 11:16am imaranan



LEGEND & SYMBOLS



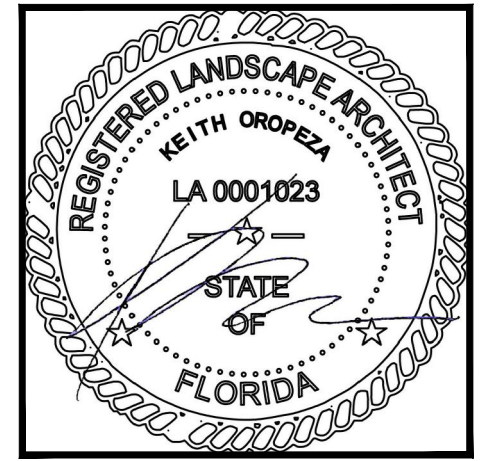
TRANSPLANT

LANDSCAPE TRANSPLANT HOLDING NOTES:

1. ALL TRANSPLANTED LANDSCAPE MATERIAL SHALL HAVE TEMPORARY IRRIGATION TO PROVIDE ADEQUATE WATER WHILE IN THE HOLDING LOCATION.

**S&ME**  
 WWW.SMEINC.COM  
 1615 Edgewater Drive, Suite 200, Orlando, Florida 32804  
 T 407.973.1278 F 407.973.1278  
 Jason D. Bay, P.E., L.S. 73803  
 Keith Oropeza, L.A. L0001023  
 Florida Firm Registration No. F-0176

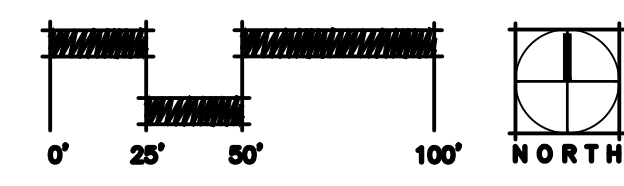
**OCEAN WALK**  
 KEY WEST, FL



DATE	REVISIONS
07.24.17	PER TREE COMMISSION
06.19.17	REVISED BASE
01.06.17	PER CITY COMMENTS
12.30.16	

**L0.03**  
 TRANSPLANT  
 HOLDING PLAN

G:\Projects\2016\527116021\dwg\_Construction\527116021-L3.00.dwg-L2.00 Jul 25, 2017 - 12:00pm imaranan



**S&ME**  
 WWW.SMEINC.COM  
 1615 Edgewater Drive, Suite 200, ORLANDO, FLORIDA 32804  
 T 407.973.1278 F 407.973.1278 www.smeinc.com  
 Jason D. Bay, P.E., L.S. 73803  
 Keith Oropeza, L.A. L0001023  
 Florida Firm Registration No. F-0176

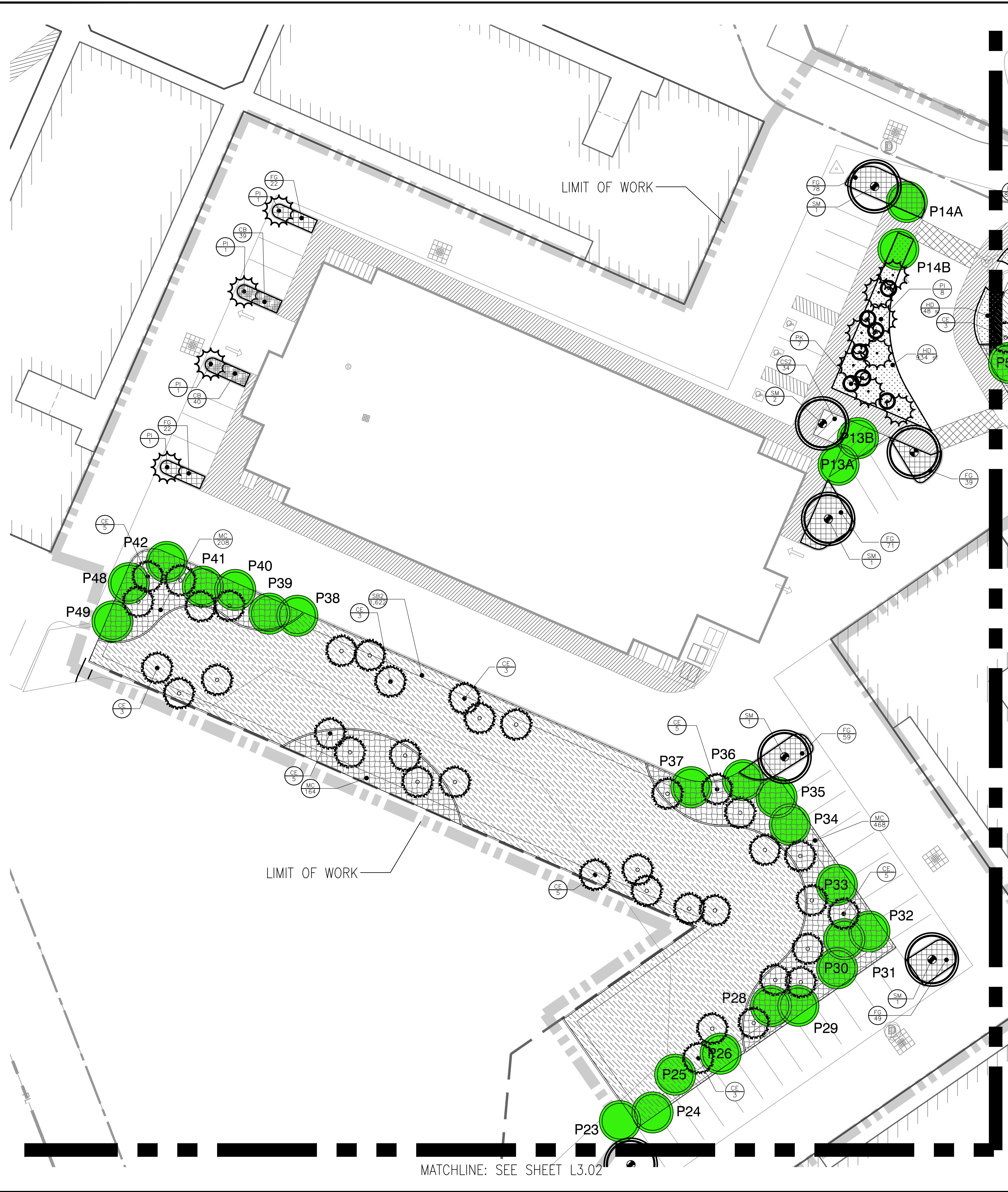
**OCEAN WALK**  
 KEY WEST, FL



DATE	REVISIONS
07.24.17	PER TREE COMMISSION
06.19.17	REVISED BASE
01.06.17	PER CITY COMMENTS
12.30.16	

**L2.00**  
 OVERALL  
 LANDSCAPE PLAN

G:\Projects\2016\527116021\dwg\_Construction\527116021-L3.00.dwg-L3.00 ul 25, 2017 - 11:59am imaranan



LANDSCAPE REQUIREMENTS		
<b>Minimum Landscape Areas</b>	<b>Required</b>	<b>Provided</b>
Site Area 136,343 SF X 20% Minimum Area of Building Site	27,269 SF/20%	62,726/46%
<b>Minimum Native Plant Requirement 70%</b>	<b>Total Provided</b>	<b>Percent Provided</b>
Native Plants	5151	80%
Exotic Plants	1255	20%
<b>Total Native &amp; Exotic Plants</b>	<b>6406</b>	
<b>Minimum Parking Lot Perimeter Landscaping</b>	<b>Total Required</b>	<b>Total Provided</b>
10' Perimeter Landscape Width Buffer	25 Canopy Trees	25 Canopy
856 LF Parking Lot Buffer/35 LF= 25	250 Shrubs	735 Shrubs
1 Canopy Tree x 25		
10 Shrubs x 25		
<b>Nonvehicular Open Space (NOS) Landscape Requirements</b>	<b>Total Required</b>	<b>Total Provide</b>
34% or 17,085 SF of Site Nonvehicular Open Space	27.3	29
Requires 4 Trees/2,500 SF of NOS		
17,085 SF/2,500=6.83 SF X 4 Trees		

**IRRIGATION REQUIREMENTS:**  
 1" of water over 1.44 acres of pervious surfaces=8,960 gallons of water per watering cycle

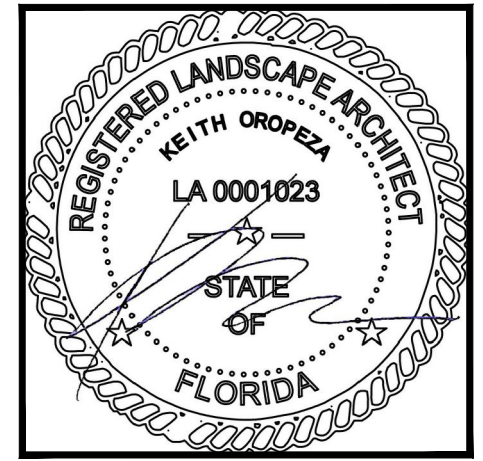
1. Water Source: 2- 12,096 gallon cisterns
2. Water Available: 24,192 gallons
3. Anticipated Water Use: 8,960 gallons per cycle twice a week= 17,920 gal/wk

**PLANT SCHEDULE**

TREES	CODE	QTY	BOTANICAL NAME	COMMON NAME	SIZE	CAL	SIZE
	CE	74	CONCARPUS ERECTUS	BUTTONWOOD	30 GAL., 8'-10' HT. MT		
	PI	18	PISCIDIA PISCIPULA	JAMAICAN DOGWOOD	45 GAL., 14'-16' HT., 6' CT		
	PK	42	PITHECELLOBIUM KEYENSE	FLORIDA KEYS BLACKBEAD	FG.	3" CAL.	12'-14' HT. X 5'-6" SPRD
	SM	15	SWIETENIA MAHAGONI	WEST INDIAN MAHOGANY	FG.	8" CAL.	SPECIMEN
SHRUB AREAS	CODE	QTY	BOTANICAL NAME	COMMON NAME	CONTI	SIZE	SPACING
	CS2	148	CLUSIA GUTTIFERA	SMALL-LEAF CLUSIA	30 GAL., 24"-36" X 24"-36"		36" o.c.
	MC	3,389	MUHLENBERGIA CAPILLARIS	PINK MUHLY	3 GAL., 24"-30" OA. FULL		30" o.c.
	SB2	3,873	SPARTINA PATENS	SALT MEADOW CORD GRASS	3 GAL., 24"-30" OA. FULL		36" o.c.
GROUND COVERS	CODE	QTY	BOTANICAL NAME	COMMON NAME	CONTI	SIZE	SPACING
	CB	752	CANAVALIA ROSEA	BEACH BEAN	1 GAL., FULL IN POT, 18" O.C.		18" o.c.
	FG	834	FICUS MICROCARPA 'GREEN ISLAND'	GREEN ISLAND FICUS	1 GAL., 18"-24" OA		24" o.c.
	HD	7,152 SF	HELIANTHUS DEBILIS	BEACH SUNFLOWER	SOD		

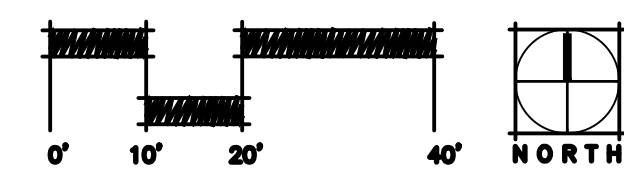
MATCHLINE: SEE SHEET L3.01

**OCEAN WALK**  
KEY WEST, FL

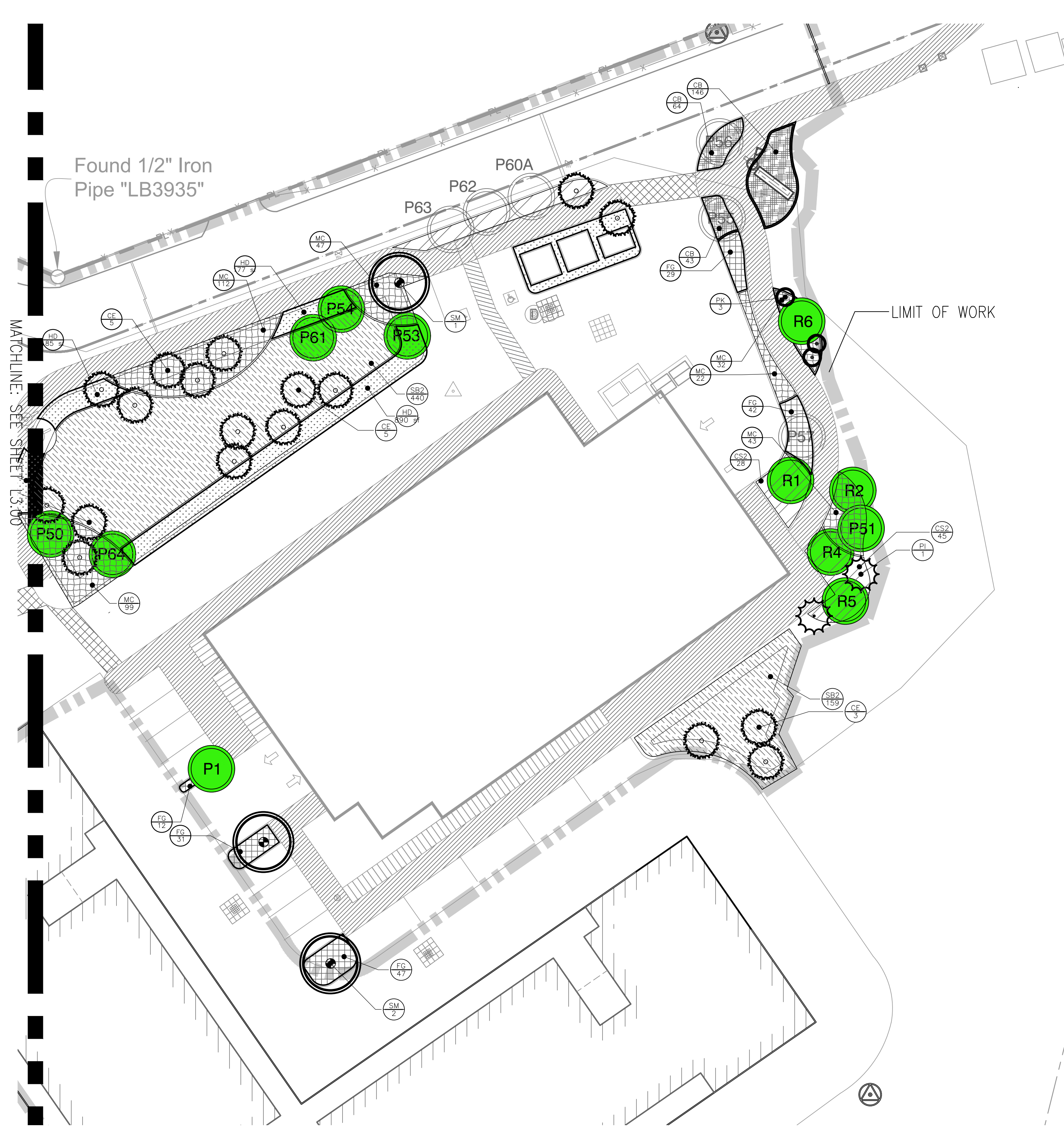


DATE	REVISIONS
07.24.17	PER TREE COMMISSION
06.19.17	REVISED BASE
01.06.17	PER CITY COMMENTS
12.30.16	

**L3.00**  
LANDSCAPE PLAN



**S&ME**  
WWW.SMEINC.COM  
1615 Edgewater Drive, Suite 200, ORLANDO, FLORIDA 32804  
T 407.979.4122  
F 407.973.1278  
www.smeinc.com  
Keith Cropez LA 0001023  
Florida Firm Registration No. F-0176



LANDSCAPE REQUIREMENTS		
<b>Minimum Landscape Areas</b>	<b>Required</b>	<b>Provided</b>
Site Area 136,343 SF X 20% Minimum Area of Building Site	27,269 SF/20%	62,726/46%
<b>Minimum Native Plant Requirement 70%</b>	<b>Total Provided</b>	<b>Percent Provided</b>
Native Plants	5151	80%
Exotic Plants	1255	20%
<b>Total Native &amp; Exotic Plants</b>	<b>6406</b>	
<b>Minimum Parking Lot Perimeter Landscaping</b>		
10' Perimeter Landscape Width Buffer		
856 LF Parking Lot Buffer/35 LF= 25		
	<b>Total Required</b>	<b>Total Provided</b>
1 Canopy Tree x 25	25 Canopy Trees	25 Canopy
10 Shrubs x 25	250 Shrubs	735 Shrubs
<b>Nonvehicular Open Space (NOS) Landscape Requirements</b>		
34% or 17,085 SF of Site Nonvehicular Open Space		
Requires 4 Trees/2,500 SF of NOS		
	<b>Total Required</b>	<b>Total Provide</b>
17,085 SF/2,500=6.83 SF X 4 Trees	27.3	29

**IRRIGATION REQUIREMENTS:**  
 1" of water over 1.44 acres of pervious surfaces=8,960 gallons of water per watering cycle

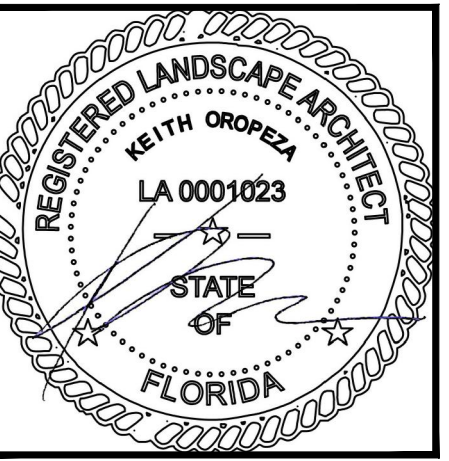
1. Water Source: 2- 12,096 gallon cisterns
2. Water Available: 24,192 gallons
3. Anticipated Water Use: 8,960 gallons per cycle twice a week= 17,920 gal/wk

**PLANT SCHEDULE**

TREES	CODE	QTY	BOTANICAL NAME	COMMON NAME	SIZE	CAL	SIZE
	CE	74	CONOCARPUS ERECTUS	BUTTONWOOD	30 GAL., 8'-10' HT. MT		
	PI	18	PISCIDIA PISCIPULA	JAMAICAN DOGWOOD	45 GAL., 14'-16' HT., 6' CT		
	PK	42	PITHECELLOBIUM KEYENSE	FLORIDA KEYS BLACKBEAD	FG.	3" CAL.	12'-14' HT. X 5'-6' SPRD
	SM	15	SWIETENIA MAHAGONI	WEST INDIAN MAHOGANY	FG.	8" CAL.	SPECIMEN
SHRUB AREAS	CODE	QTY	BOTANICAL NAME	COMMON NAME	CONT.	SIZE	SPACING
	CS2	148	CLUSIA GUTTIFERA	SMALL-LEAF CLUSIA	30 GAL., 24"-36" X 24"-36"		36" o.c.
	MC	3,389	MUHLENBERGIA CAPILLARIS	PINK MUHLY	3 GAL., 24"-30" OA. FULL		30" o.c.
	SB2	3,873	SPARTINA PATENS	SALT MEADOW CORD GRASS	3 GAL., 24"-30" OA. FULL		36" o.c.
GROUND COVERS	CODE	QTY	BOTANICAL NAME	COMMON NAME	CONT.	SIZE	SPACING
	CB	752	CANAVALLA ROSEA	BEACH BEAN	1 GAL., FULL IN POT, 18" O.C.		18" o.c.
	FG	834	FICUS MICROCARPA 'GREEN ISLAND'	GREEN ISLAND FIGUS	1 GAL., 18"-24" OA		24" o.c.
	HD	7,152 SF	HELIANTHUS DEBIUS	BEACH SUNFLOWER	SOD		

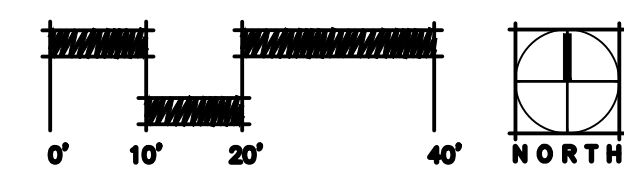
**S&ME**  
 WWW.SMEINC.COM  
 1615 Edgewater Drive, Suite 200, ORLANDO, FLORIDA 32804  
 T: 407.979.7278 F: 407.979.1278  
 Jensen D. Beard, L.C.S., L.S., L.P.  
 Keith Orsop, L.A. LA0001023  
 Florida Firm Registration No. F-0176

**OCEAN WALK**  
 KEY WEST, FL



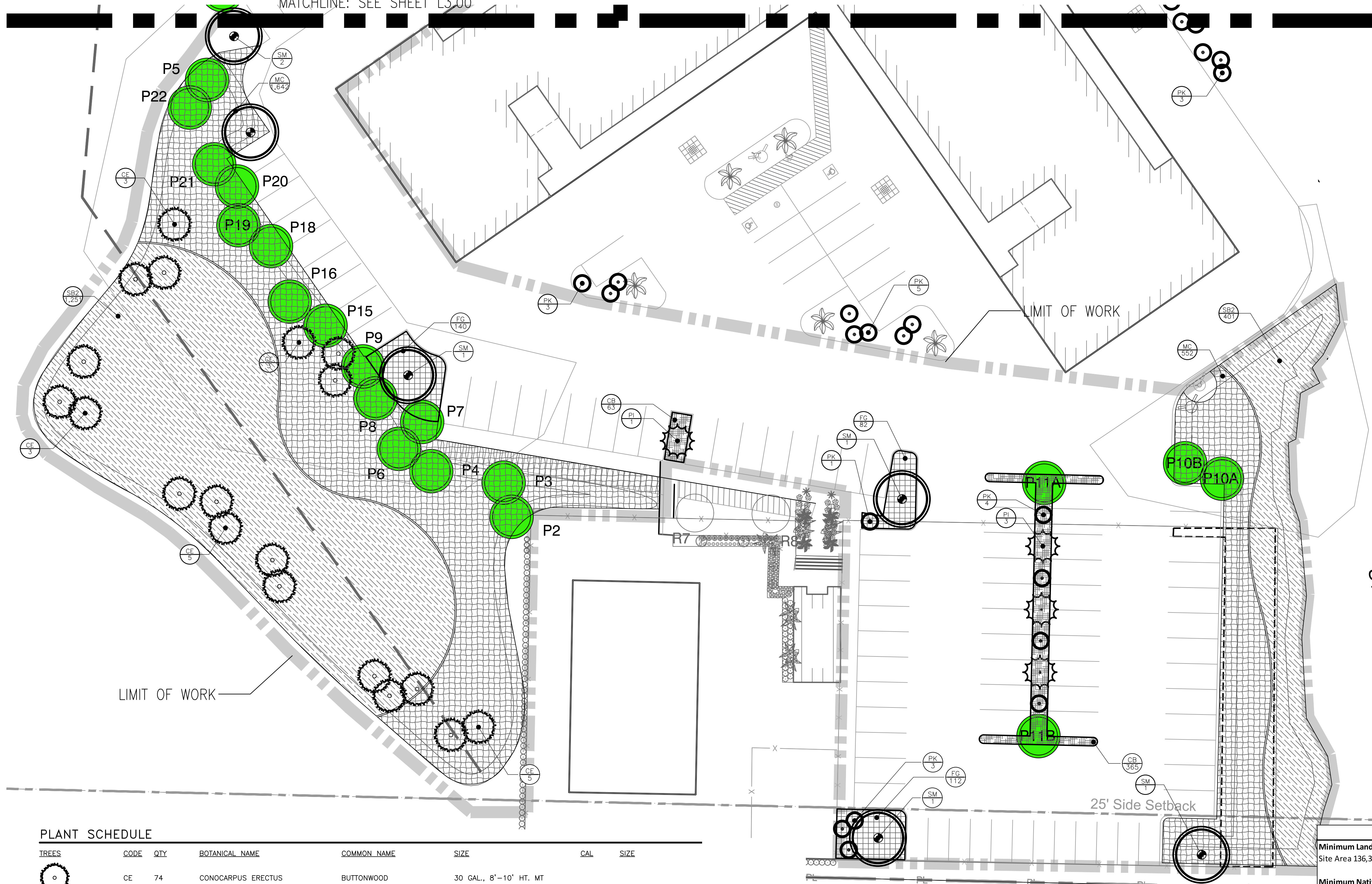
07.24.17	PER TREE COMMISSION
06.19.17	REVISED BASE
01.06.17	PER CITY COMMENTS
DATE	REVISIONS
12.30.16	

**L3.01**  
 LANDSCAPE PLAN



G:\Projects\2016\527116021\dwg\_Construction\527116021-L3.00.dwg-L3.01 Jul 25, 2017 - 11:58am imaranan

MATCHLINE: SEE SHEET L3.00

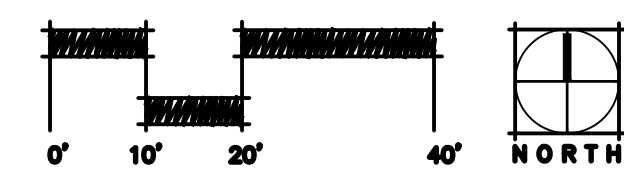


**PLANT SCHEDULE**

TREES	CODE	QTY	BOTANICAL NAME	COMMON NAME	SIZE	CAL	SIZE
	CE	74	CONOCARPUS ERECTUS	BUTTONWOOD	30 GAL., 8'-10' HT. MT		
	PI	18	PISCIDIA PISCIPULA	JAMAICAN DOGWOOD	45 GAL., 14'-16' HT., 6' CT		
	PK	42	PITHECELLOBIUM KEYENSE	FLORIDA KEYS BLACKBEAD	FG.	3" CAL.	12'-14' HT. X 5'-6'
	SM	15	SWIETENIA MAHAGONI	WEST INDIAN MAHOGANY	FG.	8" CAL.	SPECIMEN
SHRUB AREAS	CODE	QTY	BOTANICAL NAME	COMMON NAME	CONT	SIZE	
	CS2	148	CLUSIA GUTTIFERA	SMALL-LEAF CLUSIA	30 GAL., 24"-36" X 24"-36"		
	MC	3,389	MUHLENBERGIA CAPILLARIS	PINK MUHLY	3 GAL., 24"-30" OA. FULL		
	SB2	3,873	SPARTINA PATENS	SALT MEADOW CORD GRASS	3 GAL., 24"-30" OA. FULL		
GROUND COVERS	CODE	QTY	BOTANICAL NAME	COMMON NAME	CONT	SIZE	
	CB	752	CANAVALIA ROSEA	BEACH BEAN	1 GAL., FULL IN POT, 18" O.C.		
	FG	834	FICUS MICROCARPA 'GREEN ISLAND'	GREEN ISLAND FICUS	1 GAL., 18"-24" OA		
	HD	7,152 SF	HELIANTHUS DEBILIS	BEACH SUNFLOWER	SOD		

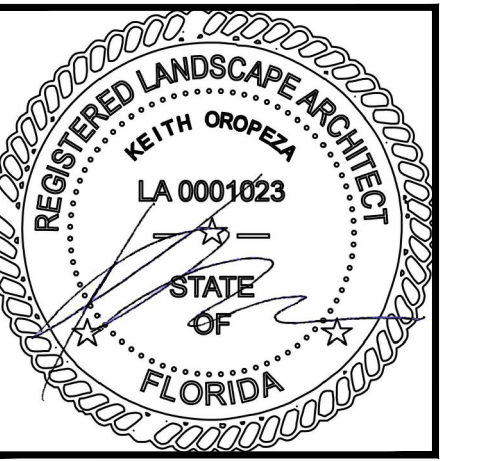
LANDSCAPE REQUIREMENTS		
<b>Minimum Landscape Areas</b>	<b>Required</b>	<b>Provided</b>
Site Area 136,343 SF X 20% Minimum Area of Building Site	27,269 SF/20%	62,726/46%
<b>Minimum Native Plant Requirement 70%</b>	<b>Total Provided</b>	<b>Percent Provided</b>
Native Plants	5151	80%
Exotic Plants	1255	20%
<b>Total Native &amp; Exotic Plants</b>	<b>6406</b>	
<b>Minimum Parking Lot Perimeter Landscaping</b>	<b>Total Required</b>	<b>Total Provided</b>
10' Perimeter Landscape Width Buffer	25 Canopy Trees	25 Canopy
856 LF Parking Lot Buffer/35 LF= 25	250 Shrubs	735 Shrubs
<b>Nonvehicular Open Space (NOS) Landscape Requirements</b>	<b>Total Required</b>	<b>Total Provide</b>
34% or 17,085 SF of Site Nonvehicular Open Space	27.3	29
Requires 4 Trees/2,500 SF of NOS		
17,085 SF/2,500=6.83 SF X 4 Trees		

- IRRIGATION REQUIREMENTS:**  
 1" of water over 1.44 acres of pervious surfaces=8,960 gallons of water per watering cycle
1. Water Source: 2- 12,096 gallon cisterns
  2. Water Available: 24,192 gallons
  3. Anticipated Water Use: 8,960 gallons per cycle twice a week= 17,920 gal/wk



**S&ME**  
 WWW.SMEINC.COM  
 1615 Edgewater Drive, Suite 200, ORLANDO, FLORIDA 32804  
 T 407.975.1278 F 407.975.1278  
 Keith Orsopa LA 0001023  
 Florida Firm Registration No. F-0176

**OCEAN WALK**  
 KEY WEST, FL



DATE	REVISIONS
07.24.17	PER TREE COMMISSION
06.19.17	REVISED BASE
01.06.17	PER CITY COMMENTS
DATE	REVISIONS

**L3.02**  
 LANDSCAPE PLAN & PLANT LIST

G:\Projects\2016\527116021\dwg\_Construction\527116021-L3.00.dwg - L3.02 Jul 25, 2017 - 11:58am imaranan