



THE CITY OF KEY WEST  
Tree Commission

Post Office Box 1409 - Key West, FL 33041-1409  
Telephone: 305-809-3723

January 3, 2024

Land 10031 LLC/Land 2421 LLC/Land 113 LLC/Land 7009 LLC/Land 1701 LLC/Land 8351 LLC/Land 2708  
LLC/Land 4027 LLC/Land 8601 LLC  
4900 W. Hundred Road  
Chester, VA 23831

To Whom It May Concern:

The City of Key West Tree Commission recently considered your application, TP2023-0008, for Conceptual Landscape Plan approval for a major modification to a minor development plan to redevelop the property at 3228 Flagler Avenue (3221 Riviera Drive), Key West, Florida, at their regularly scheduled meeting on January 2, 2024.

The Tree Commission approved the Conceptual Landscape Plan dated December 8, 2023, (see attached plans) that includes the removal of (1) Washingtonian palm and (1) Gumbo Limbo tree to be replaced with (1) native palm, minimum 4 ft tall, and 3.3 caliper inches of approved trees, FL#1, to be planted on site as part of the approved landscape plans.

This approval now allows the project to proceed through the review process with the Planning Board. Once you have received approvals from this board, an application should be made again to the Tree Commission for Final Landscape Plan approval. If no significant changes have occurred to the plan, then the Urban Forestry Manager will be able to file a memo into the file regarding Final landscape plan approval.

If you have any questions, please call the office at (305) 809-3768.

Sincerely,

Misha McRAE  
Chairman, Tree Commission

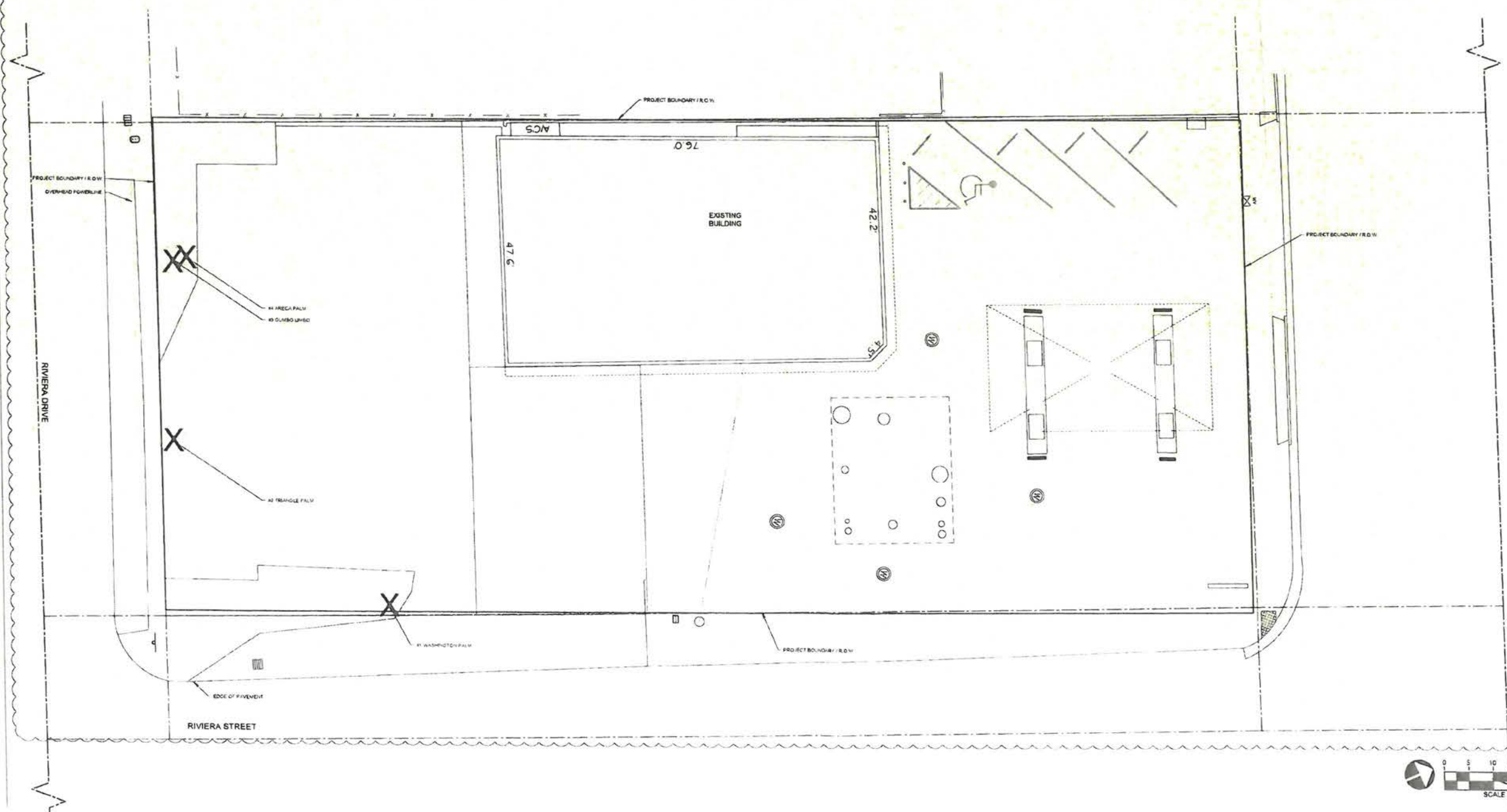
Karen DeMaria  
Urban Forestry Manager  
[tree@cityofkeywest-fl.gov](mailto:tree@cityofkeywest-fl.gov)

1-19-24

ec: Owen Trepanier, Trepanier & Associates

EXISTING TREE IMPACT SCHEDULE													
TREE #	COMMON NAME	BOTANICAL NAME	NOTES	APPRX. DSH	HEIGHT	SPREAD	REMOVE	LOCATION	CONDITION (VALUE %)	VALUE X DSH			
									SPECIES	CONDITION	MIT. REQ.	TOTAL VALUE	INCHES REQUIRED
3	Gumbo Limbo	Bursea simaruba	Native - poor condition	4'	8'	6'	X	80	100	50	Y	20	3.3"
										TOTAL TREE MITIGATION INCHES REQUIRED	20	3.3"	

PALM #	COMMON NAME	BOTANICAL NAME	NOTES	APPRX. DSH	HEIGHT	SPREAD	REMOVE	REPLACEMENT QTY	MIT. REQ.	TOTAL	
1	Washington Palm	Washingtonia robusta	NH- replace w/4" native palm	12"	10' ea	10'	X	1	Y	1	
2	Triangle Palm	Dypsis decaryi	NH- replace w/4" native palm	12"	8' ea	8'	X	1	N	0	
4	Jareca Palm	Dypsis lutescens	NH- not protected	na	6'	4'	X	0	N	0	
										TOTAL PALMS REQUIRED	2



**THE STUDIOS ON RIVIERA**  
**CODE MINIMUM LANDSCAPE PLANS**  
**KEY WEST, FLORIDA**

PROJECT NO: 23005335  
DATE: 09/12/2023  
DRAWN: WL  
REVIEWED: WL

REVISIONS:  
▲ PLANNING COMMENTS-13/09/2023

EXISTING TREE PLAN

L1.1



1-2-24  
1-19-24  
[Signature]

1ST SUBMITTAL



SYMBOL	CODE	QTY	BOTANICAL NAME	COMMON NAME	SIZE	COL	CONT	NATIVE	DROUGHT TOLERANT	DETAIL	REMARKS
	01	1	Cordia alliodora	Fig Tree	12-14 GA	12" GA	80	YES	NO		
	02	1	Chorizanthe lucida	Star Anemone	12-14 GA	12" GA	20	YES	YES		
	03	1	Psychotria sp.	Star Anemone	12-14 GA	12" GA	20	YES	YES		
	04	1	Thryx palm	Key Thatch Palm	4-6 GA	4" GA	10	YES	NO		
	05	1	Thryx palm	Key Thatch Palm	4-6 GA	4" GA	10	YES	NO		

SYMBOL	CODE	QTY	BOTANICAL NAME	COMMON NAME	SIZE	CONTAINER	NATIVE	DROUGHT TOLERANT	DETAIL	REMARKS	
	01	24	Chorizanthe lucida	Star Anemone	24" x 18"	18"	NO	YES	YES		
	02	24	Psychotria sp.	Star Anemone	24" x 18"	18"	NO	YES	YES		
	03	24	Psychotria sp.	Star Anemone	24" x 18"	18"	NO	YES	YES		

SYMBOL	CODE	QTY	BOTANICAL NAME	COMMON NAME	SIZE	CONTAINER	NATIVE	DROUGHT TOLERANT	DETAIL	REMARKS	
	01	1	Styctopus sp.	Star Anemone	24" x 18"	18"	NO	YES	YES		
	02	1	Styctopus sp.	Star Anemone	24" x 18"	18"	NO	YES	YES		

**CODE MINIMUM REQUIREMENTS PER LDC**

SEC. 108-412 - MINIMUM LANDSCAPING REQUIREMENTS  
 MINIMUM LANDSCAPED AREAS, THE MINIMUM AREA OF A BUILDING SITE WHICH SHALL BE LANDSCAPED WITH TREES, INCLUDING CANOPY TREES, SHRUBS AND GROUND COVER, AND OTHER LANDSCAPING AS DEFINED IN THIS ARTICLE SHALL BE A MINIMUM OF 20 PERCENT OF THE BUILDING SITE AREA.

SEC. 108-413 - REQUIREMENTS ALONG STREET FRONTAGE  
 CALCULATION OF LANDSCAPING, LANDSCAPING SHALL BE REQUIRED TO BE LOCATED WITHIN THE PROPERTY LINE AND/OR BUILDING SETBACK AS ESTABLISHED BY THE LAND DEVELOPMENT REGULATIONS OR AS OTHERWISE ESTABLISHED. LANDSCAPING, WHEN REQUIRED IN EASEMENTS, MAY BE ADJUSTED BY THE PLANNING BOARD, A DECISION ON ANY RELATED ISSUE DECIDED UPON BY THE PLANNING BOARD BUT REMAINING IN DISPUTE SHALL BE RESOLVED BY THE CITY COMMISSION.

SEC. 108-414 - REQUIREMENTS FOR INTERIOR AREAS  
 (SCOPE) THIS SECTION PRESENTS A SUMMARY OF THE MINIMUM REQUIREMENTS FOR LANDSCAPING AND TREE PLANTING WITHIN THE INTERIOR OF PARKING LOTS AND ALONG THE OTHER PERIMETERS OF A PARKING LOT.

SEC. 108-415 - PERIMETER LANDSCAPE REQUIREMENTS  
 (SCOPE) STANDARDS PERIMETER LANDSCAPING DEFINES PARKING AREAS AND PREVENTS TWO ADJACENT LOTS FROM BECOMING ONE LARGE EXPANSE OF PAVING. PERIMETER LANDSCAPED AREAS FOR ALL OFF-STREET PARKING AREAS, EXCEPT SINGLE-FAMILY HOMES AND PARKING LOTS FOR SIX OR FEWER VEHICLES, MUST MEET THE FOLLOWING STANDARDS.

Area of Site	Width of Required Landscaping (Linear Feet)	Number of Plant Units* Required per 100 Linear Feet of Property Line or Right-of-Way
Less than 0.5 acre	10	40
0.5 to 1 acre	20	80
1 to 3 acres	30	120
3 or more acres	40	160

\*A plant unit is a measurement describing the amount of required plant material in flexible units based on the unit values in the following table.

Type of Plant Material	Number of Plant Units
One canopy or shade tree	10
One evergreen or ornamental tree	3
One shrub	1

ALL PROPERTY OTHER THAN THE REQUIRED LANDSCAPED STRIP LYING BETWEEN THE RIGHT-OF-WAY AND OFF-STREET PARKING AREA OR OTHER VEHICULAR USE AREA SHALL BE LANDSCAPED WITH GRASS OR OTHER GROUND COVER.

(REQUIRED SCREENING MATERIAL, ANY COMBINATION OF BARRIERS, SHRUB OR LANDSCAPED BERM SHALL BE PLANTED OR INSTALLED ALONG THE ENTIRE LENGTH OF EACH REQUIRED LANDSCAPE STRIP IN ALL RESIDENTIAL OR COMMERCIAL OR MIXED USE DISTRICTS. THE BARRIER, SHRUB OR LANDSCAPED BERM (BERM WITH SHRUBS) SHALL BE A MINIMUM OF 1.5 FEET IN HEIGHT, EXCEPT IN COMMERCIAL DISTRICTS, WHERE THE BARRIER, SHRUB OR LANDSCAPED BERM ALONG STREET RIGHTS-OF-WAY SHALL BE A MINIMUM OF THREE FEET IN HEIGHT.

SEC. 108-414 - REQUIREMENTS FOR INTERIOR AREAS  
 (SCOPE) THIS SECTION PRESENTS A SUMMARY OF THE MINIMUM REQUIREMENTS FOR LANDSCAPING AND TREE PLANTING WITHIN THE INTERIOR OF PARKING LOTS AND ALONG THE OTHER PERIMETERS OF A PARKING LOT.

SEC. 108-415 - PERIMETER LANDSCAPE REQUIREMENTS  
 (SCOPE) STANDARDS PERIMETER LANDSCAPING DEFINES PARKING AREAS AND PREVENTS TWO ADJACENT LOTS FROM BECOMING ONE LARGE EXPANSE OF PAVING. PERIMETER LANDSCAPED AREAS FOR ALL OFF-STREET PARKING AREAS, EXCEPT SINGLE-FAMILY HOMES AND PARKING LOTS FOR SIX OR FEWER VEHICLES, MUST MEET THE FOLLOWING STANDARDS.

SEC. 108-416 - OTHER LANDSCAPE REQUIREMENTS FOR NONVEHICULAR USE AREAS  
 (TREES) TREES SHALL BE PLANTED IN THE NONVEHICULAR OPEN SPACE, EXCLUDING THE REQUIRED STREET FRONTAGE LANDSCAPE STRIPS, THE INTERIOR PARKING LOT LANDSCAPE STRIPS, AND THE PERIMETER LANDSCAPE STRIPS, TO MEET THE FOLLOWING REQUIREMENTS:

PERCENT OF SITE IN NONVEHICULAR OPEN SPACE (NOS) (PERCENT) TREE REQUIREMENT	LESS THAN 20%	20 TO 30%	30 TO 40%	40 TO 50%	50 TO 60%	60 OR MORE
	4 TREES/2,000 SQ. FT. NOS	4 TREES/2,000 SQ. FT. NOS	4 TREES/2,000 SQ. FT. NOS	4 TREES/2,000 SQ. FT. NOS	4 TREES/2,000 SQ. FT. NOS	4 TREES/2,000 SQ. FT. NOS

(GRASS) GROUND COVER, SHRUBS, AND OTHER LANDSCAPING MATERIALS SHALL BE USED TO TREAT ALL GROUND NOT COVERED BY BUILDING, PAVING, OR OTHER STRUCTURES. ALL STRUCTURES SHALL BE TREATED WITH LANDSCAPING SO AS TO ENHANCE THE APPEARANCE OF THE STRUCTURE AND TO SCREEN ANY UNSIGHTLY FEATURES. TREES, AS REQUIRED IN THIS SECTION, SHALL BE SPACED IN CLUSTERS OR SITUATED IN STRATEGIC LOCATIONS CONSISTENT WITH GOOD PRINCIPLES OF DESIGN AND PLANT INSTALLATION.

SEC. 108-416 - OTHER LANDSCAPE REQUIREMENTS FOR NONVEHICULAR USE AREAS  
 (TREES) TREES SHALL BE PLANTED IN THE NONVEHICULAR OPEN SPACE, EXCLUDING THE REQUIRED STREET FRONTAGE LANDSCAPE STRIPS, THE INTERIOR PARKING LOT LANDSCAPE STRIPS, AND THE PERIMETER LANDSCAPE STRIPS, TO MEET THE FOLLOWING REQUIREMENTS:

SEC. 108-416 - OTHER LANDSCAPE REQUIREMENTS FOR NONVEHICULAR USE AREAS  
 (TREES) TREES SHALL BE PLANTED IN THE NONVEHICULAR OPEN SPACE, EXCLUDING THE REQUIRED STREET FRONTAGE LANDSCAPE STRIPS, THE INTERIOR PARKING LOT LANDSCAPE STRIPS, AND THE PERIMETER LANDSCAPE STRIPS, TO MEET THE FOLLOWING REQUIREMENTS:

PERCENT OF SITE IN NONVEHICULAR OPEN SPACE (NOS) (PERCENT) TREE REQUIREMENT	LESS THAN 20%	20 TO 30%	30 TO 40%	40 TO 50%	50 TO 60%	60 OR MORE
	4 TREES/2,000 SQ. FT. NOS	4 TREES/2,000 SQ. FT. NOS	4 TREES/2,000 SQ. FT. NOS	4 TREES/2,000 SQ. FT. NOS	4 TREES/2,000 SQ. FT. NOS	4 TREES/2,000 SQ. FT. NOS

(GRASS) GROUND COVER, SHRUBS, AND OTHER LANDSCAPING MATERIALS SHALL BE USED TO TREAT ALL GROUND NOT COVERED BY BUILDING, PAVING, OR OTHER STRUCTURES. ALL STRUCTURES SHALL BE TREATED WITH LANDSCAPING SO AS TO ENHANCE THE APPEARANCE OF THE STRUCTURE AND TO SCREEN ANY UNSIGHTLY FEATURES. TREES, AS REQUIRED IN THIS SECTION, SHALL BE SPACED IN CLUSTERS OR SITUATED IN STRATEGIC LOCATIONS CONSISTENT WITH GOOD PRINCIPLES OF DESIGN AND PLANT INSTALLATION.

GENERAL NOTES:  
 100% IRRIGATION COVERAGE SHALL BE PROVIDED TO ALL PROPOSED PLANTING AREAS. SAID SYSTEM SHALL BE DESIGNED TO MAXIMIZE WATER CONSERVATION. THIS SYSTEM SHALL BE CONNECTED TO WATER METER AND INSTALLED IN ACCORDANCE WITH GOVERNING CODE AND REQUIREMENTS. AN AS-BUILT OF THE INSTALLED SYSTEM SHALL BE PROVIDED UPON COMPLETION.

- SEC. 108-416: 70% OF ALL CODE REQUIRED PLANTS SHALL BE NATIVE 10%+40% NATIVE.
- ALL TREES TO BE PROVIDED WITH A RUBBER.
- ALL SHRUBS MUST BE POSITIONED AT THE BACK OF BEDS AWAY FROM PEDESTRIAN CIRCULATION.
- COORDINATE CONTROLLER LOCATION WITH GENERAL CONTRACTOR/OWNER.
- WATER SOURCE, METERED WATER VERIFY ON SITE.
- PLANT SIZE TO TAKE PRECEDENCE OVER CONTAINER SIZE WHERE SPECIFIED.
- COORDINATE ALL MATERIAL SUBSTITUTIONS WITH LANDSCAPE ARCHITECT/OWNER PRIOR TO INSTALLATION.
- COORDINATE ALL STEEP SLOPE DISCREPANCIES WITH LANDSCAPE ARCHITECT.
- VERIFY ALL UNDERGROUND UTILITIES PRIOR TO DIGGING.
- SOIL GRADE ADJACENT TO HARDSCAPE TO BE 1" BELOW.
- SYNTHETIC TURF TO MEET HARDSCAPE FLUSH.

**PERIMETER LANDSCAPING REQUIRED**  
 SEC. 108-415 (20,000-50,000 SF BLDG - 1.5' WIDE STRIP)

	Required	Provided
1 CANOPY TREE PER 35 LF	1.14	1
10 SHRUBS PER 35 LF	11.4	12

NOTES: 40 LF OF FRONTAGE

**INTERIOR LANDSCAPING REQUIRED**  
 SEC. 108-414 (20% OF TOTAL PARKING) - 1,612 SF

	Required	Provided
LANDSCAPE AREA	322.4	322 SF
1 CANOPY TREE PER 100 SF	3.22	3.3

NOTES: LANDSCAPE AREA MUST CONTAIN GRASS OR SHRUB

**STREET FRONTAGE REQUIREMENT**  
 SEC. 108-413 (<.5 ACRE - 238 LF FRONTAGE)

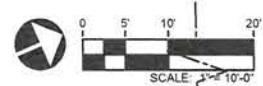
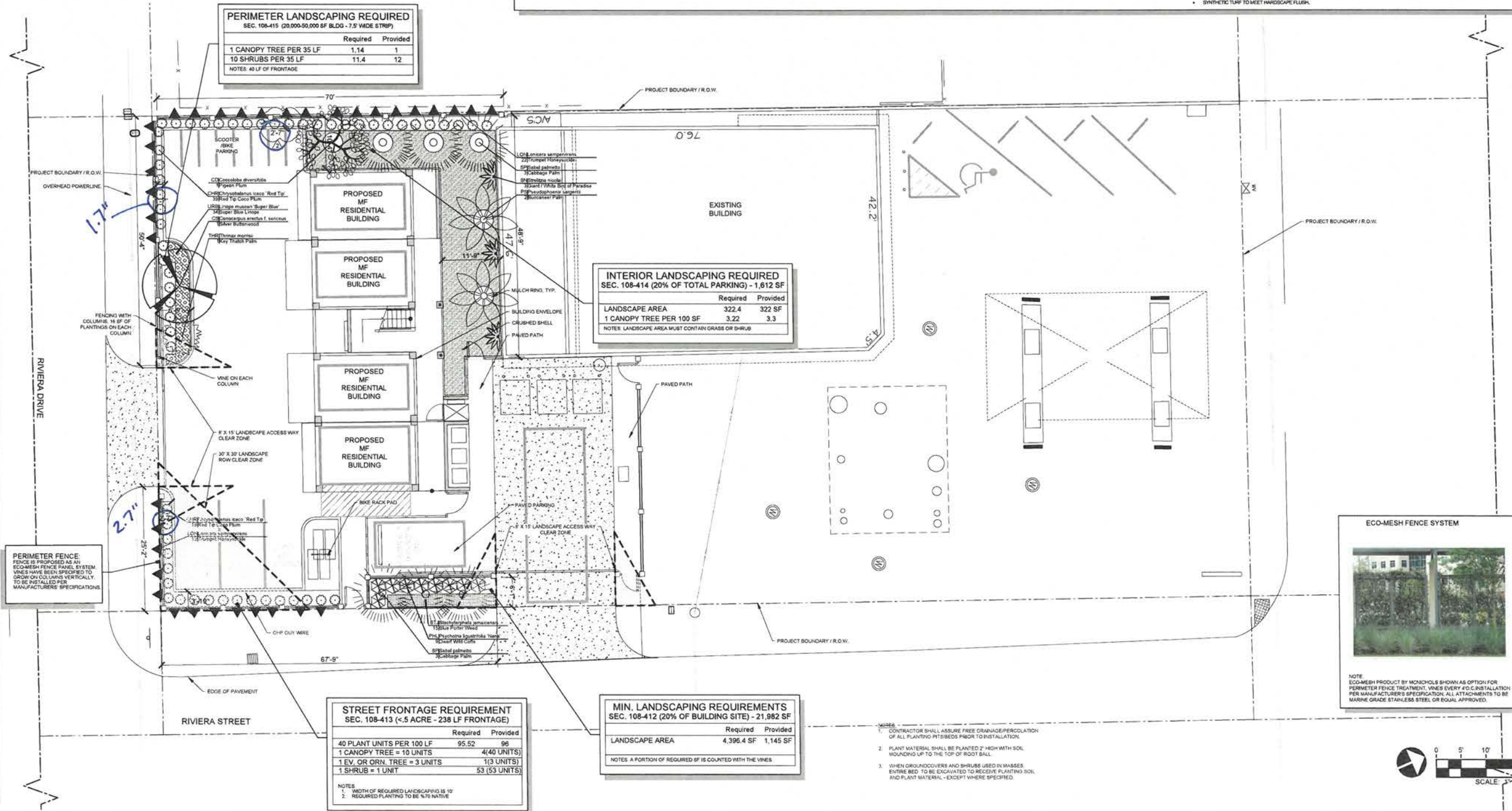
	Required	Provided
40 PLANT UNITS PER 100 LF	95.52	96
1 CANOPY TREE = 10 UNITS	4(40 UNITS)	
1 EV. OR ORN. TREE = 3 UNITS	1(3 UNITS)	
1 SHRUB = 1 UNIT	53 (53 UNITS)	

NOTES:  
 1. WIDTH OF REQUIRED LANDSCAPING IS 10'  
 2. REQUIRED PLANTING TO BE 6/10 NATIVE

**MIN. LANDSCAPING REQUIREMENTS**  
 SEC. 108-412 (20% OF BUILDING SITE) - 21,982 SF

	Required	Provided
LANDSCAPE AREA	4,396.4 SF	1,145 SF

NOTES: A PORTION OF REQUIRED SF IS COUNTED WITH THE VINES.



Digitally signed by Tianyang Liu  
 Date: 2024.01.04 19:05:11-05'00'

TIANYANG LIU  
 P.L.S. 2024.01.04  
 Sunshine811  
 Call 811 or visit sunshine811.com two full business days before digging to have buried facilities located and marked. Check positive - customer codes before you dig!

**THE STUDIOS ON RIVIERA**  
 CODE MINIMUM LANDSCAPE PLANS  
 KEY WEST, FLORIDA

PROJECT NO: 23005335  
 DATE: 08/12/2023  
 DRAWN: WL  
 REVIEWED: WL

REVISIONS:  
 1. PLANNING COMMENTS-12/08/2023  
 2. PLANNING COMMENTS-01/04/2024

LANDSCAPE PLAN

L1

1ST SUBMITTAL



**IRRIGATION NOTES**

- 1) THIS IRRIGATION PLAN IS SCHEMATIC AND IS FOR PERMITTING PURPOSES ONLY.
- 2) MAX WATER USE TO COMPLY WITH WATER USE PERMIT
- 3) CALCULATIONS ARE FOR ALL THE PERVIOUS AREA WITHIN THE SITE. INDIVIDUAL LOT IRRIGATION WILL BE PROVIDED AT THE TIME OF LOT CONSTRUCTION.
- 4) THE CONTRACTOR SHALL PROVIDE AS-BUILT DRAWINGS SHOWING ALL HEADS, VALVES, AND PIPE LINES TO SCALE AFTER COMPLETION OF PIPING INSTALLATION. THE OWNER SHALL PROVIDE INSTRUCTION SHEETS AND PARTS LIST COVERING EQUIPMENT.
- 5) THE CONTRACTOR SHALL MAKE EVERY POSSIBLE EFFORT TO PRESERVE EXISTING PLANT MATERIAL THAT HAS BEEN TAGGED. WHERE SUCH TABLE FALLS IN THE PATH OF TRENCHING, THE CONTRACTOR SHALL REROUTE THE PIPE OR HAND TRENCH AS NECESSARY TO PROTECT THE DESIGNATED PLANT MATERIAL. THE CONTRACTOR MUST STORE ANY NEW PLANT MATERIAL OR ACCEPTANCE.
- 6) THE OWNER MUST APPROVE ANY SUBSTITUTION MADE.
- 7) ALL PIPE AND CONTROL LINES SHALL BE SLEEVED WITH SCHEDULE 40 PVC AND PLACED A MINIMUM OF 3" BELOW GRADE AND BACKFILLED WITH CLEAN SAND. NO ROCK IS TO BE IN CONTACT WITH THE PVC PIPE. THE CONTRACTOR SHALL PROVIDE METRIC MARKERS AT EACH END OF THE SLEEVE. SLEEVE SHALL BE 4" MINIMUM.
- 8) THE CONTRACTOR SHALL BE RESPONSIBLE FOR CONSTRUCTING THE SYSTEM IN COMPLETE ACCORDANCE WITH ALL APPLICABLE CODES, ORDINANCES AND LAWS. ANY MODIFICATIONS MADE TO CONFORM WITH SAG CODES, LAWS AND ORDINANCES SHALL BE COMPLETED AT THE CONTRACTOR'S EXPENSE AT NO ADDITIONAL COST TO THE CLIENT.
- 9) ALL CIRCUIT PIPING IS TO BE CLASS 100 PVC OR A HIGHER GRADE.
- 10) ALL MAIN FITTINGS SHALL BE REINFORCED WITH 200#PSI POURED CONCRETE THRUST BLOCKS.
- 11) THE IRRIGATION CONTRACTOR IS FULLY RESPONSIBLE FOR THE WORK UNTIL THE OWNER GIVES FINAL ACCEPTANCE.
- 12) CONTRACTOR WILL GUARANTEE THE QUALITY OF HIS MATERIALS AND WORK FOR ONE (1) YEAR. THIS PERIOD BEGINS WITH THE FINAL ACCEPTANCE OF THE OWNER.
- 13) CONTRACTORS ARE EXPECTED TO PERSONALLY EXAMINE THE SITE AND FULLY ACQUAINT THEMSELVES WITH ALL OF THE EXISTING CONDITIONS SO THAT NO MISUNDERSTANDINGS MAY AFTERWARDS ARISE TO THE CHARACTER OR AS TO THE EXTENT OF THE WORK TO BE DONE. THIS WILL ALSO ENSURE THE CONTRACTOR WILL BE AWARE OF WHAT PRECAUTIONS NEED TO BE TAKEN TO AVOID INJURY TO PEOPLE OR DAMAGE TO PROPERTY.
- 14) THE CONTRACTOR IS RESPONSIBLE FOR PROVIDING A COMPLETE AND OPERABLE SYSTEM FOR THE IRRIGATION OF ALL LANDSCAPE PLANTING ON SITE. PLANS AND SPECIFICATIONS MAY NOT INDICATE ALL ITEMS NECESSARY FOR THE PROPER IRRIGATION OF THE PROJECT AND THE CONTRACTOR HOLDS THE RESPONSIBILITY FOR FURNISHING LABOR, MATERIALS AND EQUIPMENT REQUIRED FOR A COMPLETE AND PROPER PROJECT EVEN IF NOT IN THE INITIAL SPECIFICATIONS.
- 15) ALL IRRIGATION WATER MAINS SHALL BE SEPARATED FROM WATER MAINS BY A MINIMUM HORIZONTAL DISTANCE OF SIX (6) FEET MEASURED EDGE TO EDGE AND A VERTICAL DISTANCE OF SIXTEEN (16) INCHES FROM THE BOTTOM OF THE UPPER PIPE TO THE TOP OF THE LOWER PIPE.

**COVERAGE AND BACKFLOW REQUIREMENTS**

- 1) IRRIGATION HEADS SHALL BE PLACED IN TRIANGULAR SPACING TO PROVIDE 100% HEAD-TO-HEAD COVERAGE.
- 2) IT IS THE CONTRACTOR'S RESPONSIBILITY TO ADJUST THE HEAD LOCATION, TYPE AND SIZE AND ANY OTHER SYSTEM COMPONENTS TO COMPLY WITH THE REQUIREMENTS OF LANDSCAPE PLANTING AS INSTALLED. THESE ADJUSTMENTS MUST BE COMPLETED AT THE CONTRACTOR'S EXPENSE TO THE OWNER EXCEPT WHEN AUTHORIZED IN WRITING.
- 3) NON-POTABLE IRRIGATION SUPPLY DOES NOT REQUIRE BACKFLOW PREVENTOR, HOWEVER, WHERE EXISTING MAINLINE PRESSURES EXCEED TO PSI, PRESSURE CONTROL VALVES SHALL BE INSTALLED.
- 4) AN APPROVED RAIN SENSOR IS REQUIRED.
- 5) CONTRACTOR SHALL MINIMIZE OUTFLOW ONTO ROADS, SIDEWALKS OR OTHER HARDSCAPE AREAS AND ADJACENT PROPERTY OR CONSERVATION AREAS.

**IRRIGATION SCHEDULE**

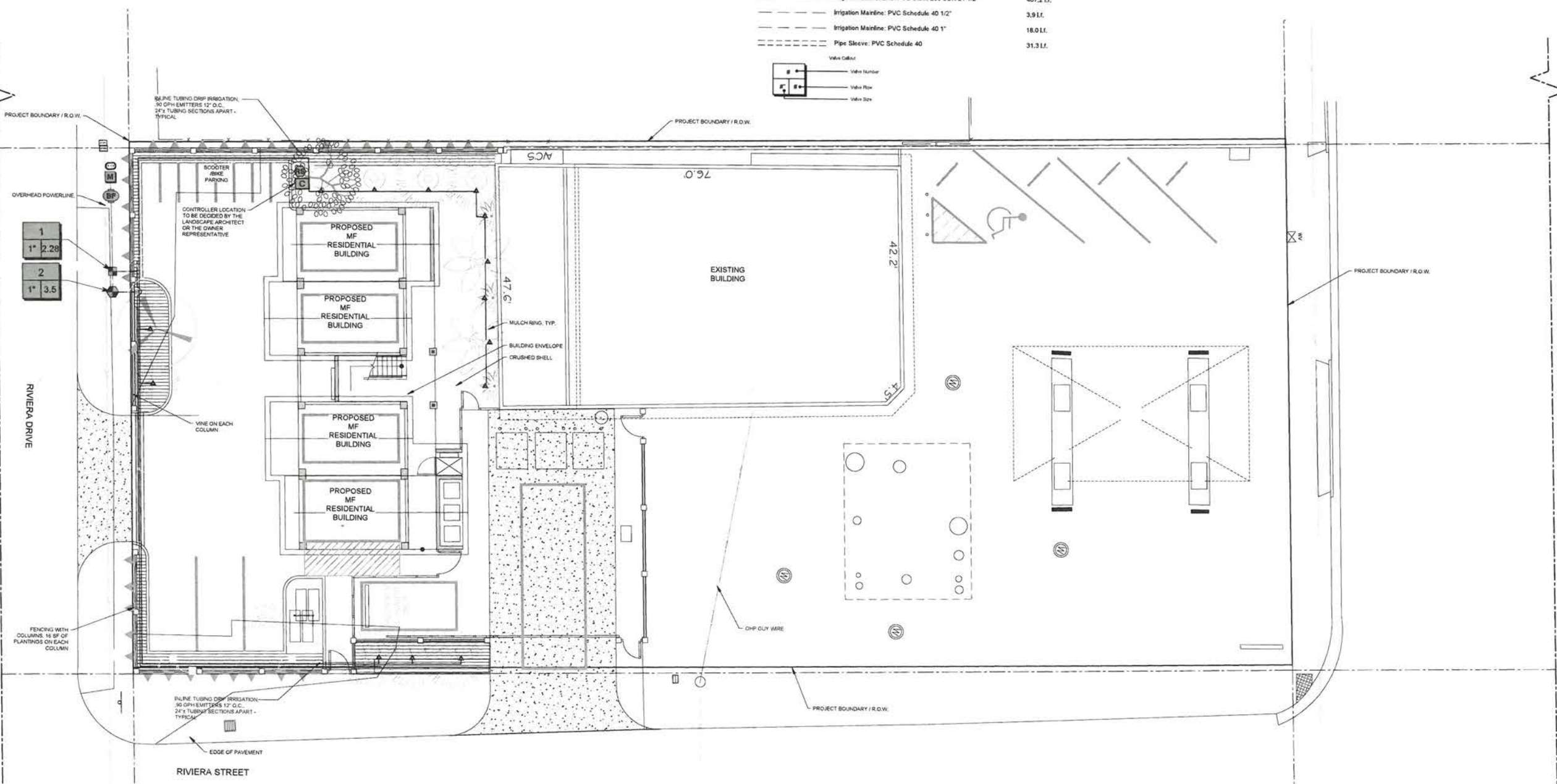
SYMBOL	MANUFACTURER/MODEL/DESCRIPTION	QTY	ARC	PSI	GPM	RADIUS	DETAIL
▲	Rain Bird 1804-1400 Flood 1401	14	360	20	0.25	3'	DETAIL
■	Rain Bird XCZ-100-N/MQ 1" Wide Flow I/M Drip Control Kit for Commercial Applications. 1in. Ball Valve with 1in. PESBIVM Smart Valve w/ factory installed IVAS-SOL 0.3-20 ppm and 1in. Pressure Regulating 40psi Quick-Check Basket Filter 0.3-20 ppm	1					DETAIL
▨	Area to Receive Dripine Rain Bird XFS-09-12 XFS Sub-Surface Pressure Compensating Dripine w/Copper Shield Technology. 0.9 GPH emitters at 24" O.C. Laterals spaced at 24" apart, with emitters offset for triangular pattern. UV Resistant. Specify X2" insert fittings.	303.2 LI.					DETAIL
●	Rain Bird PGA Globe 1" 1in., 1-1/2in., 2in. Electric Remote Control Valve, Globe.	1					DETAIL
⊖	Febco 825Y 1" Reduced Pressure Backflow Preventer	1					DETAIL
⊕	Rain Bird ESPAM33 4 Station, Hybrid Modular Outdoor Controller. For Residential or Light Commercial Use. LNK WiFi Module and Flow Sensor Ready.	1					DETAIL
⊗	Rain Bird RSD-BEX Rain Sensor, with metal latching bracket, extension wire.	1					DETAIL
⊙	Water Meter 1"	1					DETAIL
---	Irrigation Lateral Line: PVC Class 200 SDR 21 1/2"	407.2 LI.					DETAIL
---	Irrigation Mainline: PVC Schedule 40 1/2"	3.9 LI.					DETAIL
---	Irrigation Mainline: PVC Schedule 40 1"	18.0 LI.					DETAIL
---	Pipe Sleeve: PVC Schedule 40	31.3 LI.					DETAIL

**WATERING SCHEDULE**

NUMBER	MODEL	TYPE	PRECIP	N/WEEK	MIN./WEEK	GAL./WEEK	GAL./DAY
1	Rain Bird XCZ-100-N/MQ	Area for Dripine	0.35 in/h	1	167	391	190
2	Rain Bird PGA Globe	Bubbler	0.86 in/h	1	71	249	124
TOTALS					238	629.3	314.6

**VALVE SCHEDULE**

NUMBER	MODEL	SIZE	TYPE	GPM	WIRE	PSI	PSI @ POC	PRECIP
1	Rain Bird XCZ-100-N/MQ	1"	Area for Dripine	2.28	54.4	22.2		0.36 in/h
2	Rain Bird PGA Globe	1"	Bubbler	3.5	58.3	26.6		0.86 in/h



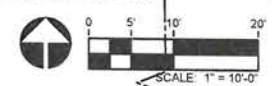
TIANYANG LIU  
 P.L. LICENSED LANDSCAPE ARCHITECT

**THE STUDIOS ON RIVIERA**  
 CODE MINIMUM LANDSCAPE PLANS  
 KEY WEST, FLORIDA

PROJECT NO: 23005335  
 DATE: 09/12/2023  
 DRAWN: WL  
 REVIEWED: WL

- REVISIONS
- ▲ PLANNING COMMENTS-12/09/2023
  - ▲ PLANNING COMMENTS-01/04/2024

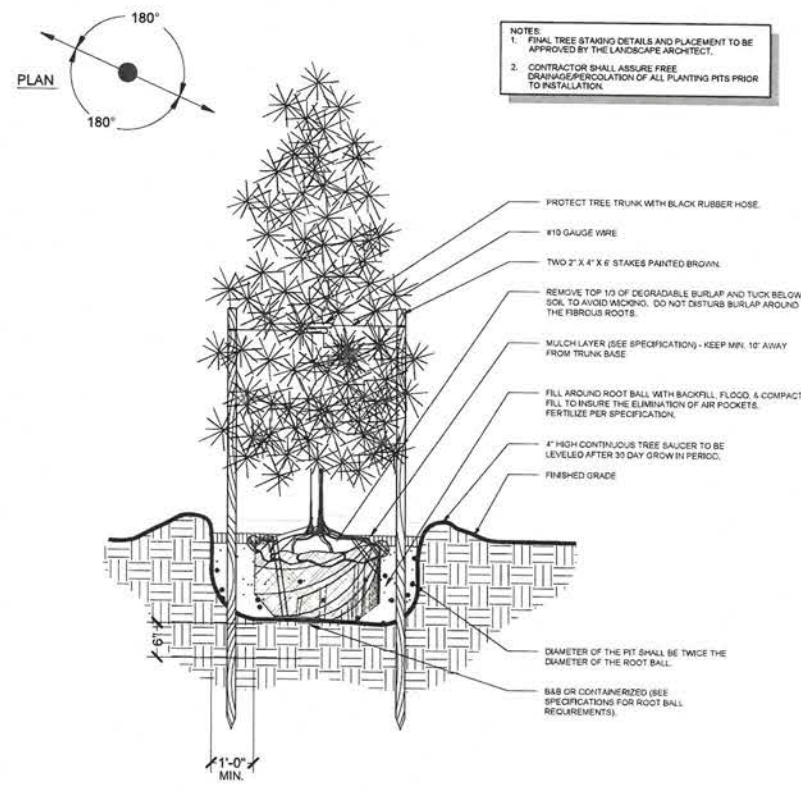
**IRRIGATION PLAN**



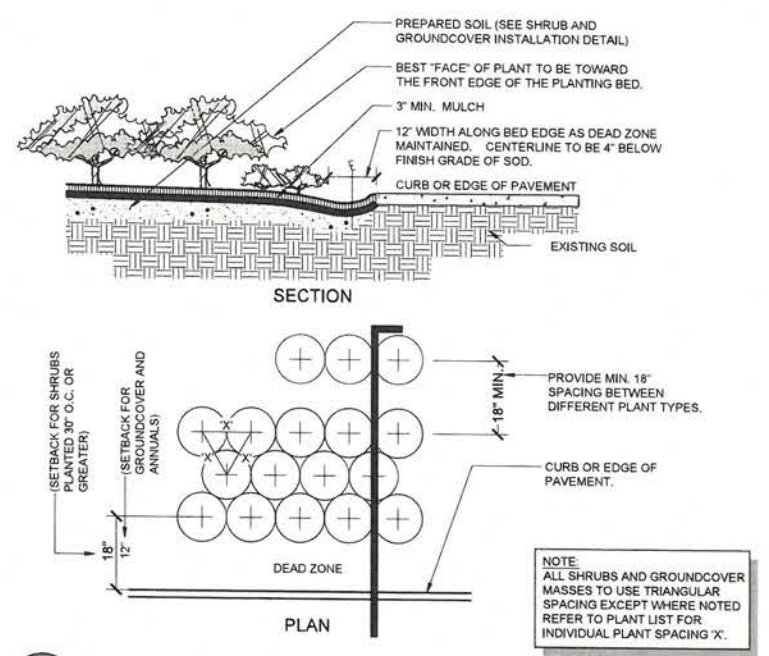
L2

1ST SUBMITTAL

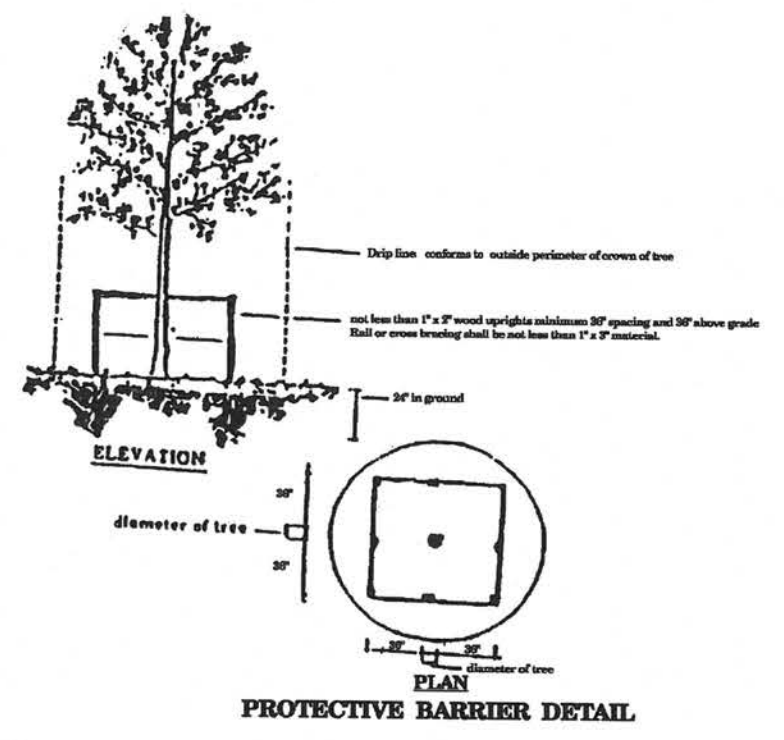




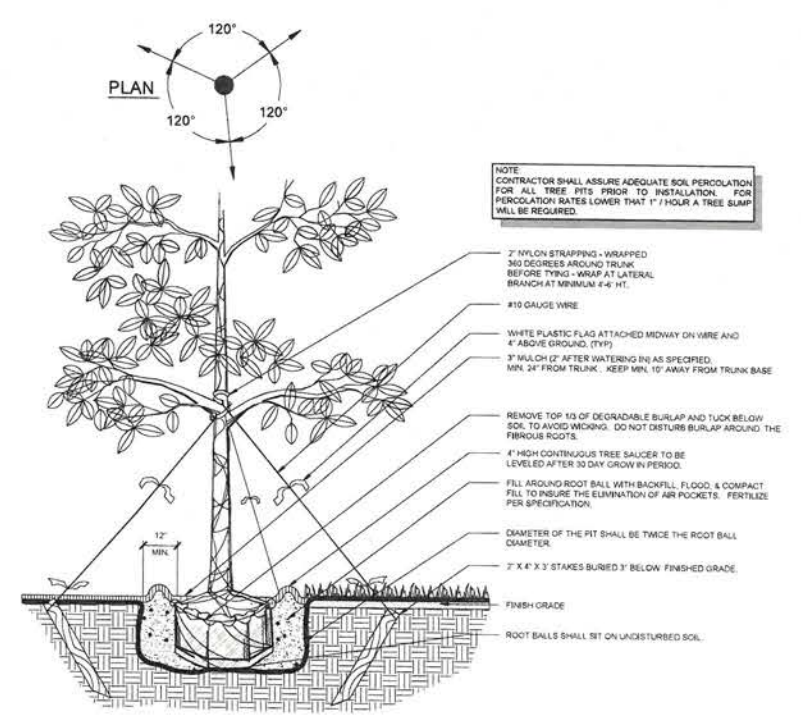
**D** SMALL TREE INSTALLATION  
SCALE: N.T.S.



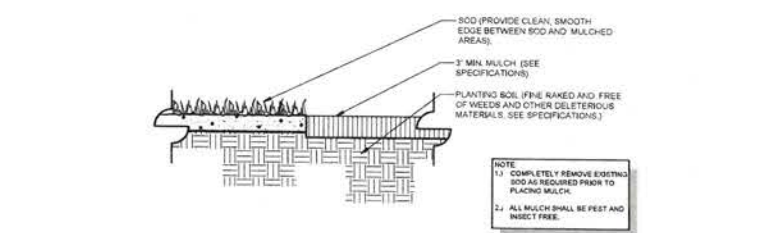
**E** TYPICAL PLANT SPACING DIAGRAM  
SCALE: N.T.S.



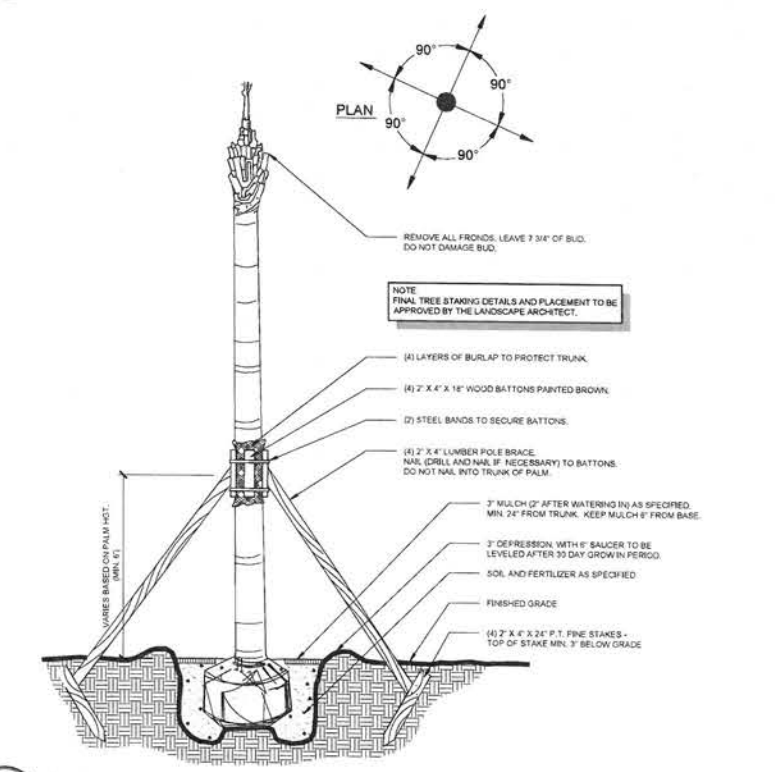
**F** PROTECTIVE BARRIER PER LDC  
SCALE: N.T.S.



**A** LARGE TREE INSTALLATION & STAKING  
SCALE: N.T.S.



**B** MULCH APPLICATION  
SCALE: N.T.S.



**C** CABBAGE PALM INSTALLATION  
SCALE: N.T.S.