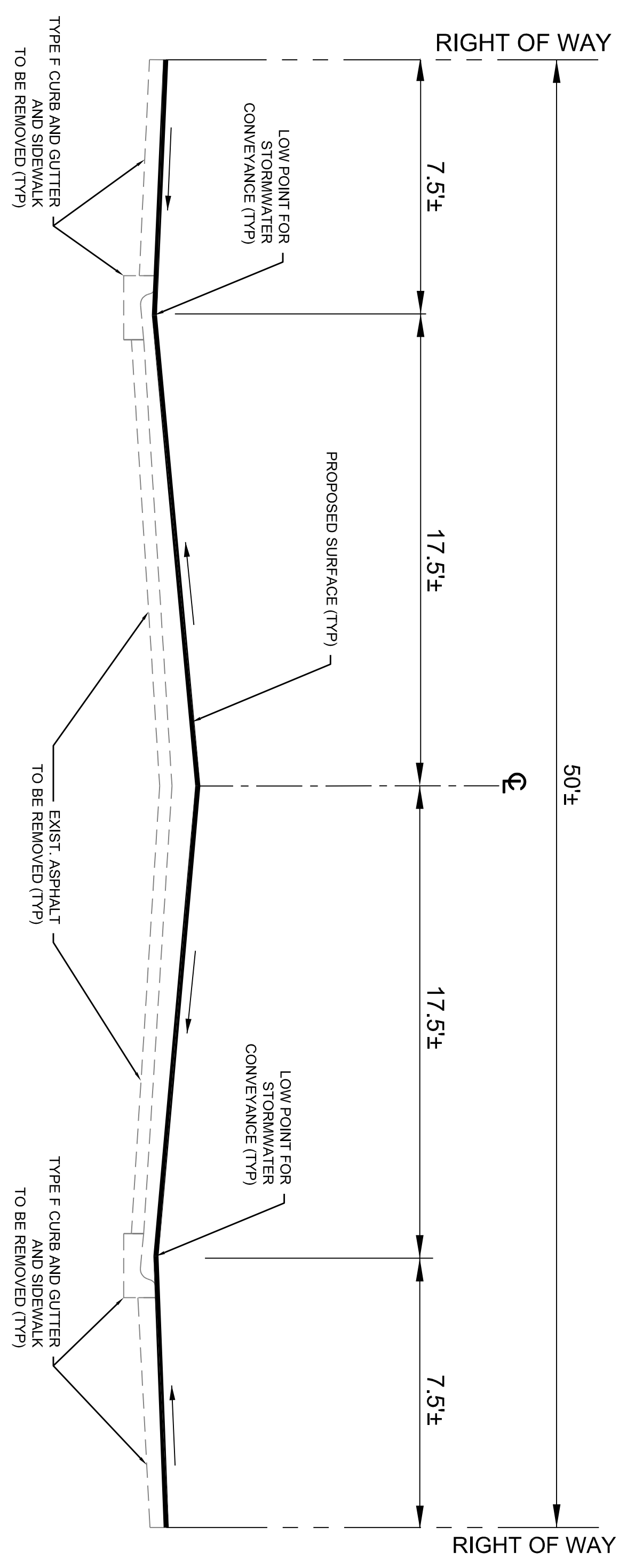
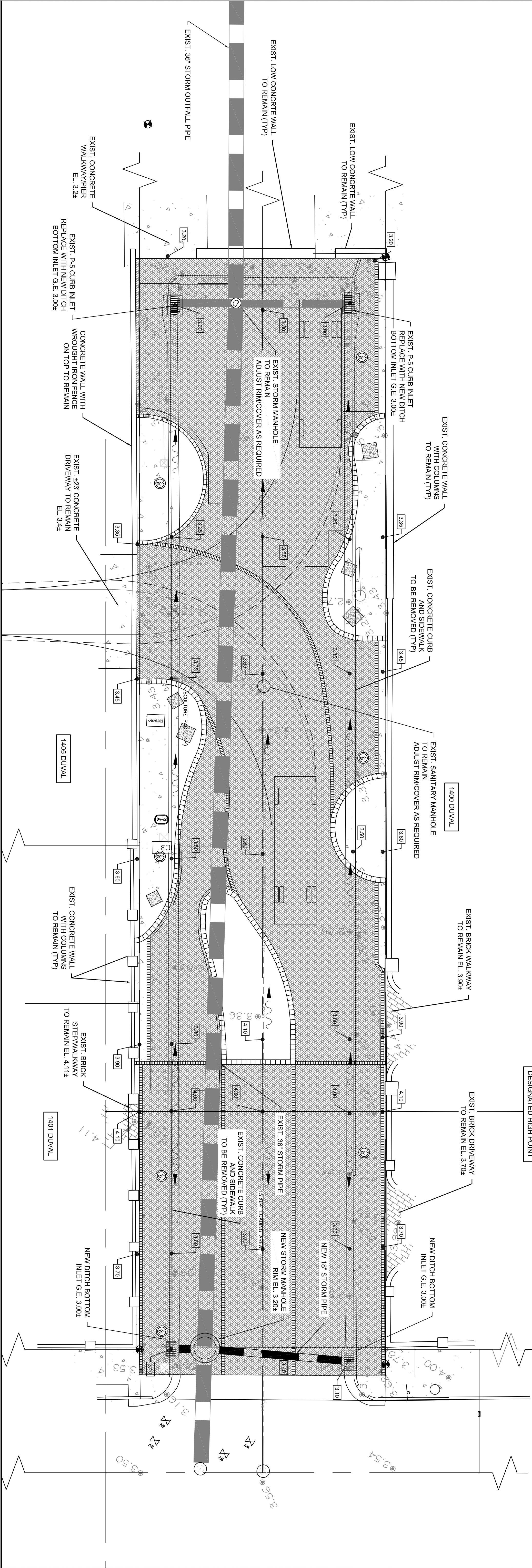
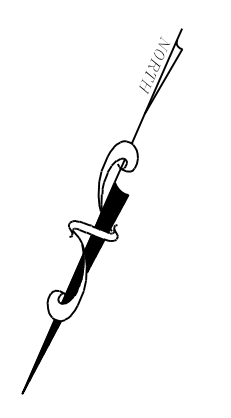
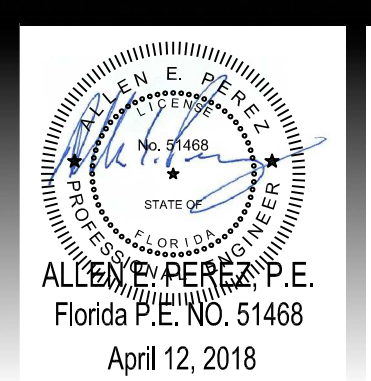


SCALE 1"=10'
 BAR IS TWO INCHES ON THIS SHEET ADJUST
 SCALES ACCORDINGLY



TYPICAL PROPOSED SECTION
 N.T.S.

REVISIONS:	ORIGINAL: APRIL 2018
1	
2	
3	
4	
5	
6	



CIVIL ENGINEERING • REGULATORY PERMITTING • CONSTRUCTION MANAGEMENT

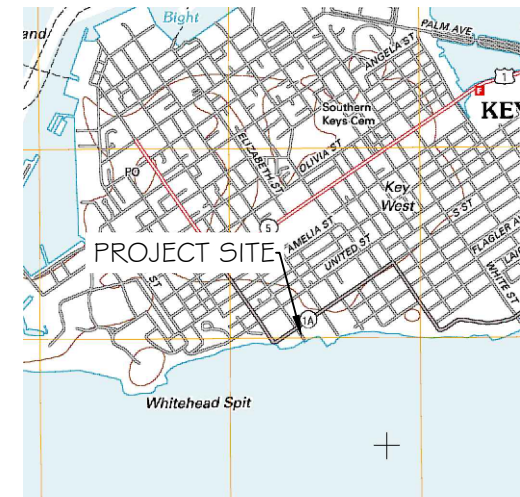
Perez Engineering & Development, Inc.
 CERTIFICATE OF AUTHORIZATION No. 8579

Key West Office
 1010 EAST KENNEDY DRIVE, SUITE 201
 KEY WEST, FLORIDA 33040
 TEL: (305) 293-9440 FAX: (305) 296-0243

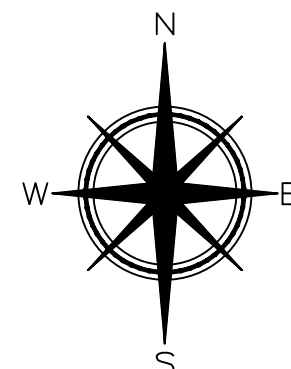
DUVAL STREET PARK	DUVAL STREET PARK
SOUTH DUVAL	KEY WEST, FL 33040
KEY WEST, FL 33040	CONCEPTUAL DRAINAGE PLAN

JOB NO.	181014
DRAWN	AEP
DESIGNED	AEP
CHECKED	AEP
OC	

SHEET
C-1



LOCATION MAP - NTS
SEC. 06-T685-R25E

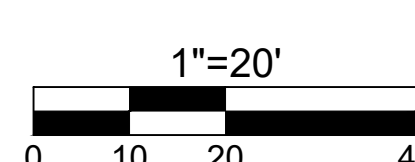


GRID NORTH

FOUND NAIL # DISC 'NORBY'
N:78502.84
E:391423.23
ELEV=3.49' (NGVD 1929)

FOUND NAIL # DISC 'FHH'
ONLINE (RW OF DUVAL ST)
3.00' NWLY

MAG NAIL W/ RED DISC
STAMPED 'FKLS 1341'
N:78283.21
E:391626.71
ELEV=3.98' (NGVD 1929)



1"=20'
*VERIFY ORIGINAL SCALE OF 2"

ABBREVIATION LEGEND:

BFP = BACK FLOW PREVENTER
BL = BASELINE
BM = BENCHMARK
CB = CONCRETE BLOCK
CBW = CONCRETE BLOCK WALL
CL = CENTERLINE
CLF = CHAINLINK FENCE
CM = CONCRETE MONUMENT
CONC = CONCRETE
CPP = CONCRETE POWER POLE
EL = ELEVATION
ENCL = ENCLOSURE
EP = EDGE OF PAVEMENT
FL = FLOW LINE
FH = FIRE HYDRANT
FND = FOUNDINGUY = GUY WIRE
LS = LANDSCAPING
MB = MAILBOX
MEAS = MEASURED
MF = METAL FENCE
NGS = NATIONAL GEODETIC SURVEY
NGVD = NATIONAL GEODETIC VERTICAL DATUM (1929)

PRM = PERMANENT REFERENCE MONUMENT
RW = RIGHT OF WAY LINE
SSCO = SANITARY SEWER CLEAN-OUT
SW = SIDE WALK
TBM = TEMPORARY BENCHMARK
TS = TRAFFIC SIGN
TYP = TYPICAL
UJR = UNREADABLE
WF = WOOD FENCE
WM = WATER METER
WPP = WOOD POWER POLE
WV = WATER VALVE
NTS = NOT TO SCALE
OH = ROOF OVERHANG
OHW = OVERHEAD WIRES
PC = POINT OF CURVE
PM = PARKING METER
PCC = POINT OF COMPOUND CURVE
PCP = PERMANENT CONTROL POINT
PK = PARKER KALON NAIL
PI = POINT OF INTERSECTION

SYMBOL LEGEND:

BENCHMARK
CATCH BASIN
DRAINAGE MANHOLE
CONCRETE UTILITY POLE
BOLLARD
FIRE HYDRANT
GUY WIRE
PARKING STATION PAY KIOSK
SANITARY CLEANOUT
SANITARY MANHOLE
SIGN
PARKING METER
WATER VALVE
WATER METER
LIGHT POLE / TRAFFIC LIGHT
WOOD UTILITY POLE
UTILITY CONTROL BOX
SPOT GRADE ELEVATION (TYPICAL)

SURVEYORS NOTES

- THIS IS NOT A BOUNDARY SURVEY, ANY BOUNDARY OR RIGHT OF WAY LINES SHOWN HEREON ARE FOR REFERENCE PURPOSES ONLY, AND ARE A GRAPHICAL REPRESENTATION OF THE BOUNDARY BASED ON THE RECOVERY OF SUFFICIENT BOUNDARY MONUMENTATION TO SPATIALLY DEFINE THE BOUNDARY LINES. NO ATTEMPT WAS MADE TO RESOLVE CONFLICTS BETWEEN THE RECOVERED BOUNDARY INFORMATION AND THE OCCUPATIONAL LINES. NO BOUNDARY OR RIGHT OF WAY LINES ARE SHOWN ON THIS SURVEY.
- HORIZONTAL COORDINATES AND BEARINGS SHOWN ARE REFERENCED TO GRID NORTH, BASED ON THE 2011 ADJUSTMENT OF THE NORTH AMERICAN DATUM OF 1983 (NAD 83/2011), OF THE FLORIDA STATE PLANE COORDINATE SYSTEM (TRANSVERSE MERCATOR PROJECTION), EAST ZONE (0901).
- COORDINATES WERE ESTABLISHED BY A REAL-TIME KINEMATIC (RTK) GNSS CONTROL SURVEY WHICH IS CERTIFIED TO A 2 CENTIMETER LOCAL ACCURACY, RELATIVE TO THE NEAREST CONTROL POINT WITHIN THE NATIONAL GEODETIC SURVEY (NGS) GEODETIC CONTROL NETWORK. METHOD: WIDE AREA CONTINUOUSLY OPERATING GPS REFERENCE STATION NETWORK (TRIMBLE VRS). ELEVATIONS SHOWN HEREON ARE IN FEET AND BASED ON THE NATIONAL GEODETIC VERTICAL DATUM OF 1929 (NGVD 1929).
- BENCHMARK DESCRIPTION: NATIONAL GEODETIC SURVEY BENCHMARK: DESIGNATION D 121, P.I.D. A40020, ELEVATION 3.91' (NGVD 1929).
- ADDITIONS OR DELETIONS TO SURVEY MAP OR REPORT BY OTHERS THAN THE SIGNING PARTY IS PROHIBITED WITHOUT THE WRITTEN CONSENT OF THE SIGNING PARTY.
- LEGAL DESCRIPTIONS HAVE BEEN FURNISHED BY THE CLIENT OR HIS/HER REPRESENTATIVE, PUBLIC RECORDS HAVE NOT BEEN RESEARCHED BY THE SURVEYOR TO DETERMINE THE ACCURACY OF THESE DESCRIPTIONS NOR HAVE ADJOINING PROPERTIES BEEN RESEARCHED TO DETERMINE OVERLAPS OR HIATUS.
- THE BOLD LINE SHOWN HEREON REPRESENTS THE SURVEYORS OPINION OF THE DEED LINES.
- THE UNDERGROUND UTILITIES SHOWN HEREON HAVE BEEN LOCATED FROM FIELD EVIDENCE. THE SURVEYOR MAKES NO GUARANTIES THAT THE UNDERGROUND UTILITIES SHOWN HEREON ENCOMPASS ALL SUCH UTILITIES IN THE AREA, EITHER IN SERVICE OR ABANDONED. FURTHERMORE THE SURVEYOR DOES NOT WARRANT THAT THE UNDERGROUND UTILITIES SHOWN ARE IN THE EXACT LOCATION INDICATED ALTHOUGH HE DOES CERTIFY THAT THEY ARE LOCATED AS ACCURATELY AS POSSIBLE FROM THE EVIDENCE AVAILABLE. NO UNDERGROUND UTILITIES WERE LOCATED FOR THIS SURVEY.
- STREET ADDRESS: 1400 BLOCK DUVAL STREET, KEY WEST, FL 33040.
- ALL UNITS ARE SHOWN IN U.S. SURVEY FEET.
- ALL FIELD DATA WAS ACQUIRED BETWEEN 02/20/2018 - 02/27/2018.
- COMMUNITY NO.: 120168; MAP NO.: 12087C-1516K; MAP DATE: 02-18-2005; FLOOD ZONE(S): AE & VE; BASE ELEVATION(S): AE-8, AE-9, VE-10 & VE-12.

TOPOGRAPHIC SURVEY OF A PORTION OF
THE 1400 BLOCK OF DUVAL STREET
KEY WEST, MONROE COUNTY, STATE OF FLORIDA



FLORIDA KEYS
LAND SURVEYING

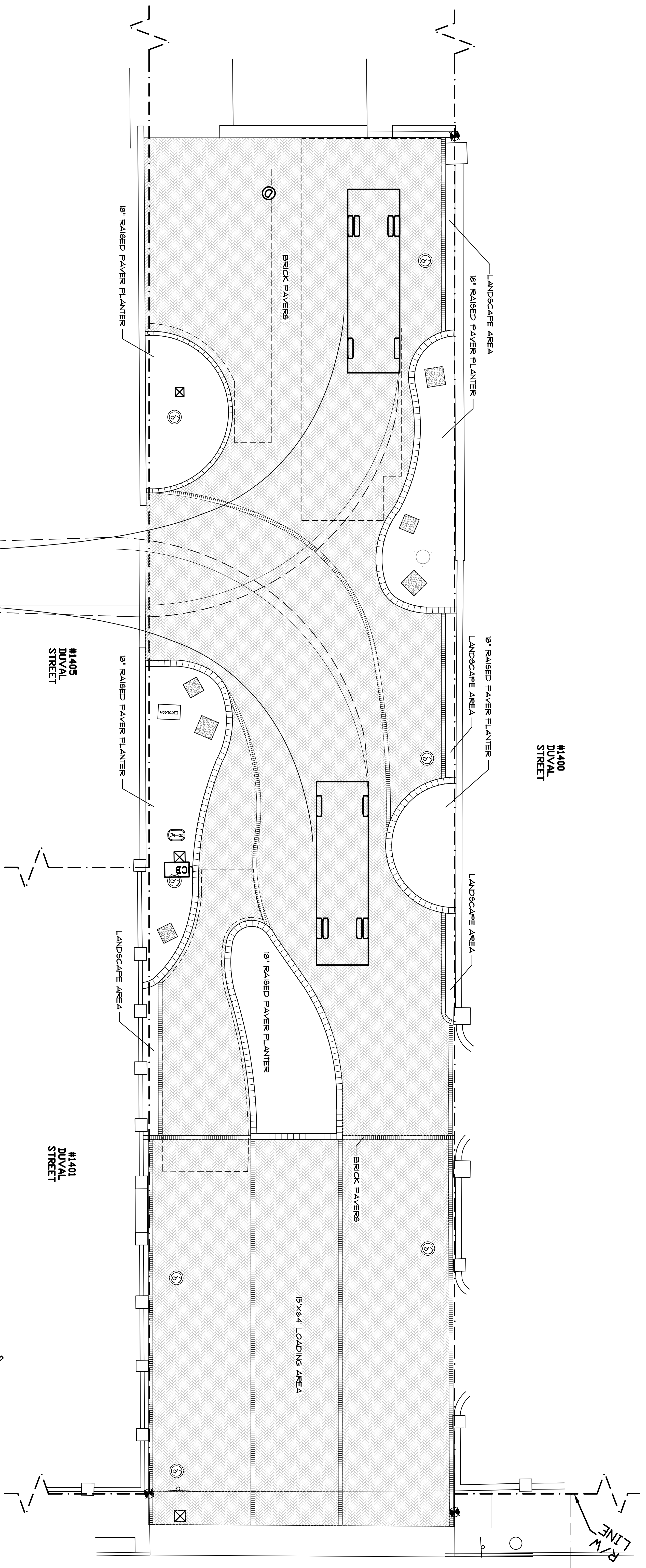
19960 OVERSEAS HIGHWAY
SUGARLOAF KEY, FL 33042
PHONE: (305) 394-3690
FAX: (305) 509-7373
EMAIL: FKL5email@Gmail.com

I HEREBY CERTIFY THAT THIS SURVEY WAS MADE UNDER MY RESPONSIBLE CHARGE AND MEETS THE STANDARDS OF PRACTICE AS SET FORTH BY THE FLORIDA BOARD OF PROFESSIONAL SURVEYORS AND MAPPERS IN CHAPTER 5J-17, FLORIDA ADMINISTRATIVE CODE, PURSUANT TO SECTION 472.027, FLORIDA STATUTES AND COMPLIES WITH CHAPTER 177, FLORIDA STATUTES.

SIGNED

ERIC A. ISAACS, PSM #6783, PROFESSIONAL SURVEYOR AND MAPPER, LB# 7847

DATE: 03/08/2018	SURVEY BY: EAI	PROJECT: KW-1400 DUVAL
ORDER:	DRAWN BY: MPB	H. SCALE: 1"=20'
CKW P0# 086173	CHECKED BY:	SHEET 1 OF 1



- KEY SCHEDULE**
- EXISTING LIGHT POLE
 - ART INSTALLATION SLAB
 - BRICK PAVERS
 - BRICK PAVERS
 - BRICK PAVERS
 - EXISTING UTILITY
 - EXISTING UTILITY

PATH OF FRONT WHEEL
 PATH OF OVER

Site Plan
 1/8" = 1' - 0"

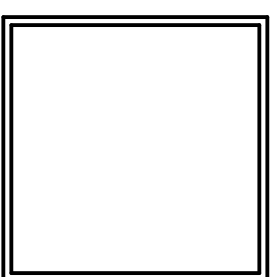
1400 Block Duval Street	
Zoning	HCT
Flood Zone	AE 9, VE 10
Site Area (SF)	11,614
Max FAR	1
Max Impervious Area	70%
Min Open Space Ratio	0.20
Height	Max
Setbacks	35'
Front	5'
Rear	10'
Street Side	5'
Side	5'
Site Areas	
Asphalt	7,680
Concrete Curb	3,934
Brick Pavers	9,295
Planters	281
Art Installation Slabs	46
Site Area (SF)	11,614
Site Area (AC)	0.27
Total Impervious Area (SF)	11,614
Impervious Area (%)	1.00
Total Open Space (SF)	0
Open Space Ratio	0.00

Sheet:
A0.1

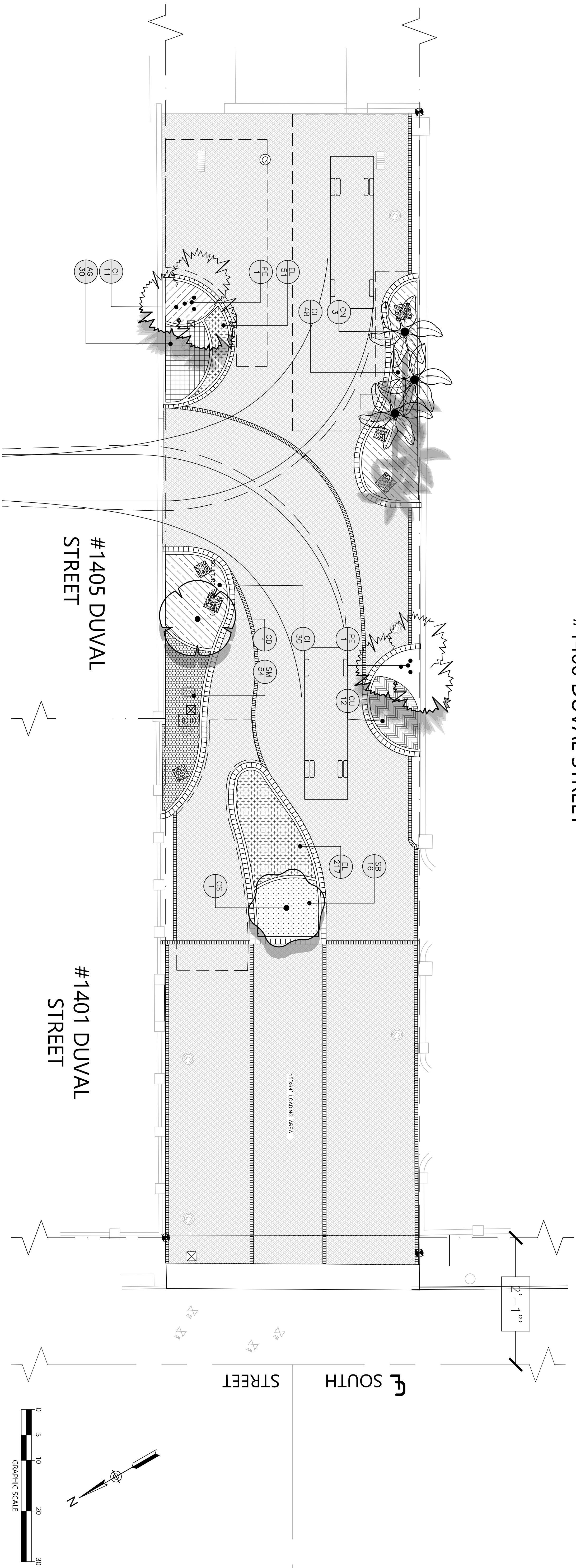
date:
 3/28/18
 revision:

THOMAS E. POPE, P.A.
 POPE-SCARBROUGH-ARCHITECTS
 (305) 296 3611 610 White St, Key West FL

Duval Street Park
 1400 Block Duval St Key West, FL



#1400 DUVAL STREET



#1405 DUVAL STREET

#1401 DUVAL STREET

PLANT SCHEDULE

TREES		CODE	QTY	BOTANICAL NAME	COMMON NAME	CONT	GAL	SIZE
CD 1		1		COCCOLOBA DIVERSIFOLIA	PIGEON PLUM	--	2.5" CAL.	12' HT MIN
CN 3		3		COCCOS NUCCIFERA STRAIGHT TRUNK	COCONUT PALM	--		12' GW
CS 1		1		CONOCARPUS ERECTUS SERICEUS	SILVER BUTTON WOOD	--	2.5" CAL.	8'-10' HT.
PE 2		2		PHYGOSPERMA ELEGANS TRIPLE	ALEXANDER PALM	--		10'-12' HT
SHRUB AREAS		CODE	QTY	BOTANICAL NAME	COMMON NAME	CONT	SIZE	SPACING
CI 89		89		CHRYSOBALANUS ICACO	COCO PLUM	3 GAL.: FULL PLANT	18-24" HT X 18-24" SPRD	30" o.c.
CU 12		12		COCCOLOBA UVIFERA	SEA GRAPE	3 GAL.	20"-24" OA	36" o.c.
GROUND COVERS		CODE	QTY	BOTANICAL NAME	COMMON NAME	CONT	SIZE	SPACING
AG 30		30		ARGUSIA GNAPHALODES	SEA ROSEMARY	3 GAL.	24"-28" OA	24" o.c.
EL 268		268		ERNODEA LITORALIS	GOLDEN CREEPER	1 GAL.	12"-14" OA	12" o.c.
SB 16		16		SPARTINA BAKERI	SAND CORO GRASS	3 GAL.	24"-28" OA	36" o.c.
SM 54		54		SURIANA MARTINA	BAY CEDAR	3 GAL.	24"-28" OA	24" o.c.

1615 EDEGATER DRIVE, STE 200,
ORLANDO, FLORIDA 32804
P. 407.975.1212
F. 407.975.1218
www.srnflc.com

DUVAL STREET PARK
KEY WEST, FLORIDA



NO.	DATE	DESCRIPTION	BY	CHK	APV
	4/10/18	PROGRESS SET	CR	KO	KO

PROJECT NUMBER
DRAWING NUMBER
L1.0
DRAWING NAME
LANDSCAPE PLAN