

Composite Exhibit A

CONCH TOUR TRAIN OF KEY WEST

VEHICLE SPECIFICATIONS

Max Length: Bus - 35' taken from the roof overhang front to rear.

Train -64' taken from the roof overhang front to rear.

Max Width: Bus - Body 99" taken from the outsides of the wheel arches.

Train- 6' taken from the outsides of the wheel arches.

Max Height: Bus - 11'6"

Train – 8'

Max GVW: Bus -22,500 lbs.

Train – 22,000 lbs.

Max Net Weight: Bus – 18,000 lbs. (Defender Bus as stated on the Registration)

Train – 12,000 lbs.

Fuel Type: Bus - Dedicated LPG and Dual Fuel Gasoline/LPG

Train – Dedicated LPG

Turning Radius: Bus - 30'

Train – 30' L /b 31' R

Max Capacity:

Bus #	Capacity		Train #	Capacity
566	32		14/97	64
567	32		20/98	64
			98/102	64
			72/104	64
			89/105	64
			37/106	64
			99/108	64
			5/109	64
			175/110	64
			188/111	64

CONCH TOUR TRAIN VEHICLE INVENTORY

Vehicle Type (VT)

TV = Train Tour Vehicle

BUS= Bus/Shuttle

Vehicle #	VT
1. 14/97	TV
2. 20/98	TV
3. 98/102	TV
4. 72/104	TV
5. 89/105	TV
6. 37/106	TV
7. 99/108	TV
8. 5/109	TV
9. 175/110	TV
10. 188/111	TV
11. 566	BUS
12. 567	BUS

97



98



102



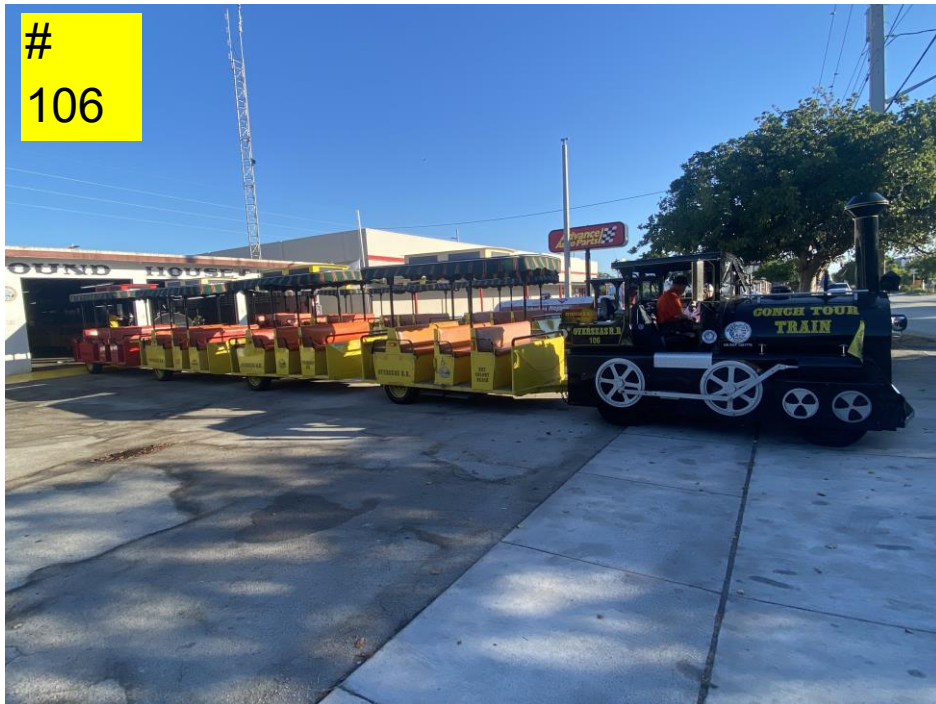
104



105



106





110



111



