

City of Key West

Request for Qualifications 10-009

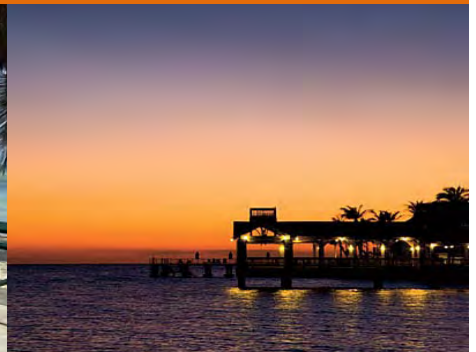
Carrying Capacity Traffic Study

Date: April 16, 2010 - Time: 3:30 P.M.



Statement of Qualification

Submitted to: City Clerk, City of Key West, 525 Angela Street, Key West, FL 33040



Calvin, Giordano & Associates, Inc.
EXCEPTIONAL SOLUTIONS



THE CITY OF KEY WEST
Request for Qualifications (RFQ) #10-009
Carrying Capacity Traffic Study
April 16, 2010

CONTENTS

1	Cover Letter
2	Information Page
3	Organization Chart
4	Company Information
5	Methodology and Approach
6	Personnel
7	Qualifications
8	Representative Carrying Capacity Traffic Study Projects and Client References
9	References
10	Required Forms <ul style="list-style-type: none">• Anti-Kickback Affidavit• Public Entity Crimes Form• Addendum 1• Addendum 2• Notice of Advertisement



April 16, 2010

City of Key West
525 Angela Street
Key West, FL 33040

**RE: City of Key West Request for Qualification (RFQ) #10-009
Carrying Capacity Traffic Study**

Dear Selection Committee Members:


Calvin, Giordano & Associates, Inc. (CGA) is pleased to submit our *Statement of Qualifications* to provide professional consulting services for the above-referenced contract. We are a well-established, multi-disciplinary firm with offices located in Ft. Lauderdale, West Palm Beach, St. Lucie County, Homestead and Orlando. For over 70 years, our firm has been providing municipal consulting services – mostly to the South Florida area. Our experience, gained through long-standing relationships with local governments and our diverse personnel, makes us uniquely qualified to deliver the required quality services stipulated in the RFQ's *Scope of Services*. If selected, Shelley Eichner, AICP, will serve as Principal-in-Charge and Jeffery Maxwell, P.E., PTOE will serve as Project Manager of the assembled Team.

EXPERIENCE THAT COUNTS. Ms. Eichner has over 30 years experience providing transportation planning services to local municipalities throughout South Florida. Mr. Maxwell has been a leader in the Traffic Engineering industry for over 16 years representing the interests of municipal and state agencies. Mr. Maxwell currently leads the CGA Traffic Engineering department in providing Traffic Engineering services to numerous jurisdictions such as the Cities of Weston, Homestead, Sunny Isles Beach and Westpark, as well as the Towns of Medley and Surfside, to name just a few. The CGA Traffic Engineering team has also been providing ongoing transportation planning services to the Florida Department of Transportation since 2004 and was recently awarded a contract extension through Year 2012.

WHY THE CGA TEAM. At CGA we recognize the City's need to contract a consultant that comprehends the City's character and scale and, as such, can provide services that integrate and contribute to the branding, community improvements, quality-of-life enhancements and uniquely individual environments expected. As such, CGA also comprehends that demanding time schedules, budgets and excellence in delivery are important components and metrics of a job and service well done. We are committed to providing the City of Key West with such quality services that both benefit the local community and contribute to the City's international appeal. **Our entire in-house team** includes professionals of all the intersecting Transportation Planning and Traffic Engineering expertise as well as Emergency Management Services, Surveying, Engineering, Landscape Architecture and GIS staff. The availability of these coordinating services is inherently included in our team approach and commitment to serving the City of Key West.

Thank you for giving us the opportunity to respond to this solicitation. I know that given the opportunity, the City will benefit from our extensive experience in the industry.

Sincerely,
CALVIN, GIORDANO & ASSOCIATES, INC.


Shelley Eichner, AICP
Vice President

Engineering
Construction Engineering
& Inspection
Municipal Engineering
Transportation Planning
& Traffic Engineering
Surveying & Mapping
Planning
Landscape Architecture
& Environmental Services
Construction Services
Indoor Air Quality
Data Technologies
& Development
Emergency Management
Services
Building Code Services
Governmental Services

1800 Eller Drive, Suite 600
Fort Lauderdale, FL 33316
Phone: 954.921.7781
Fax: 954.921.8807

www.calvin-giordano.com

SECTION 2 INFORMATION PAGE

PROJECT NAME	RFQ #10-009, Carrying Capacity Traffic Study
NAME OF FIRM	CALVIN, GIORDANO & ASSOCIATES, INC.
ADDRESS	1800 Eller Drive Suite 600 Fort Lauderdale, Florida 33316
PHONE	(954) 921-7781
FAX	(954) 921-8807
PROJECT MANAGER	Jeffery Maxwell, P.E., PTOE (Director of Traffic Engineering)
EMAIL ADDRESS FOR PM	jmaxwell@calvin-giordano.com
NAME/TITLE OF PERSON WITH SIGNING AUTHORITY	Dennis J. Giordano/President Shelley Eichner, AICP/Vice President
EMAIL ADDRESS	dgiordano@calvin-giordano.com eichners@calvin-giordano.com

SECTION 3 ORGANIZATION CHART



PRINCIPAL-IN-CHARGE

Shelley Eichner, AICP
Calvin, Giordano & Associates

PROJECT MANAGER

Jeffery Maxwell, PE, PTOE
Calvin, Giordano & Associates

TRAFFIC ENGINEERING

James Spinks, PE, PTOE
Bryan Kelly, EI
Claudia Russell, EI
Calvin, Giordano & Associates

CODE ENFORCEMENT

William Johnson
Calvin, Giordano & Associates

ROADWAY DESIGN

Raymond Pippitt, PE
Calvin, Giordano & Associates

SURVEY & MAPPING

Robert Jackson, PSM
Calvin, Giordano & Associates

GIS

Michael Green
Calvin, Giordano & Associates

EMERGENCY MANAGEMENT

Helene Wetherington
Calvin, Giordano & Associates

PLANNING

Lorraine Tappen AICP
Calvin, Giordano & Associates

All staff located in the Fort Lauderdale Office at 1800 Eller Drive, Suite 600, Fort Lauderdale 33316

SECTION 4 COMPANY INFORMATION

Calvin, Giordano & Associates, Inc. (CGA) is a multi-disciplinary firm that has been located in South Florida for more than seventy (70) years. In 1937, the company started as a small, two-person surveying firm. By the mid-1970's, the services expanded to include engineering. Today, with approximately two hundred (200) employees, CGA provides a broad range of services, including:

- *Engineering*
- *Municipal Engineering*
- *Surveying & Mapping*
- *Landscape Architecture*
- *Construction Services*
- *Data Technologies & Development*
- *Building Code Services*
- *Construction Engineering & Inspection*
- *Transportation Planning & Traffic Engineering*
- *Planning*
- *Environmental Services*
- *Indoor Air Quality*
- *Emergency Management Services*
- *Redevelopment & Urban Design*

Since its inception, CGA has served as professional consultant to various municipalities throughout Florida including the Towns of Surfside, Lake Park and Davie, and the cities of Dania Beach, Hollywood, North Lauderdale, North Miami Beach, Pembroke Pines, Bay Harbor Islands, Sunny Isles Beach and Weston, many of which have been repeat clients for more than ten (10) years.

SERVICES:

TRANSPORTATION PLANNING & TRAFFIC ENGINEERING SERVICES

Since 1997, the CGA Transportation Engineering and Planning Division has specialized in the provision of transportation planning and traffic engineering services to a variety of municipalities, offering an in-depth understanding of the regulatory framework and fiscal boundaries under which local governments operate. Our division is skilled and responsive to a wide variety of transportation planning and traffic operations requests that may originate from City Staff, Mayor and Commissioners, the public and all the municipality's various clients – developers, contractors and other service providers.

By bringing integrity and innovation to the profession, the CGA Transportation Engineering and Planning Division has established itself as a leader in the municipal transportation services field. Our workload is highly specialized and often encompasses unique situations that are technically complex or challenging within the regulatory framework. As a result, our services can range anywhere from the development of traffic performance standards for a newly incorporated City, to the design and implementation of new signal technology along a historically congested corridor.



From our collective experience managing projects for the Florida Department of Transportation (FDOT), the School District of Palm Beach County, municipal and private-sector transportation projects, we have been able to develop a unique and successful approach that integrates both

“agency” and “private-sector” perspectives. This approach has proven to be mutually beneficial for both our public and private sector clientele allowing for projects to proceed more efficiently and cost-effectively.

CGA traffic engineering services include:

<ul style="list-style-type: none"> ▪ Traffic Impact Analysis Reviews (based on Traffic Performance Standards) ▪ Signal Warrant Studies, ▪ Signal Retiming/Phasing Adjustments, ▪ 4-Way and 2-Way Stop Sign Control Evaluations, ▪ Speed and Safety Studies, School Zone Traffic Safety Issues, ▪ Maintenance of Traffic evaluations, ▪ Corridor Studies, ▪ Signing and Marking Recommendations, ▪ Parking and Circulation Studies, ▪ Traffic Forecasting and Needs Assessment, ▪ Site Plan Reviews 	<ul style="list-style-type: none"> ▪ Traffic Impact Study Reviews ▪ Traffic Forecasting Design/Major Roadway Improvements Assessments ▪ Regional Transportation Travel Demand Modeling ▪ “Traffic Calming” and Neighborhood Traffic Intrusion Studies ▪ Traffic Signal Warrant Studies/Signal Design ▪ Preparation/Review of Maintenance of Traffic plans ▪ Traffic Safety Studies and School Zone Considerations ▪ Corridor Studies 	<ul style="list-style-type: none"> ▪ Attendance at City Council meetings to provide Traffic Engineering expertise and support ▪ Representation at DRC, Planning & Zoning, and City Council meetings ▪ Site Plan reviews of proposed development and redevelopment properties ▪ Access Management and Driveway Spacing Reviews ▪ Emergency Evacuation Studies and Planning ▪ Transportation Grant Applications ▪ Comprehensive Traffic Planning ▪ Intergovernmental Agency Coordination and Representation
---	--	---

ROADWAY DESIGN

CGA has considerable roadway design experience with a variety of municipalities and the Florida Department of Transportation. Our past projects encompass a range from small local roads in existing neighborhoods to large interstate highways. The roadway design staff consists of five licensed P.E.’s and one licensed E.I. **The roadway design department provides a full range of services including the design of geometric roadway features, traffic calming measures, signing & pavement markings, pedestrian and bicycle accommodations, site drainage, and maintenance of traffic; full utility coordination, as well as obtaining all permits required for the project.** Several of our projects have included traffic calming measures such as roundabouts as part of an overall streetscape improvement project. Our staff is familiar with industry CADD standards and is able to provide AutoCAD plans (.dwg format) to our clients. Our roadway design staff is experienced in the preparation and maintenance of project schedules and construction cost estimates. Throughout the design phase, our staff controls construction costs through constructible, cost-effective designs.

CIVIL ENGINEERING

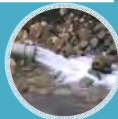
CGA's Civil Engineering department has extensive experience serving as consulting engineers to over twelve (12) municipalities and six (6) drainage districts. An area of increased environmental concern is storm water collection and disposal. CGA is at the forefront of the latest storm water modeling software and techniques utilized to quantify pollution discharge and remedial technologies to improve water quality and runoff attenuation. Our experience and rapport with local and State agencies in charge of water management permitting has given way to innovative solutions to complex surface water management challenges. Throughout all phases of a project, CGA makes a commitment to provide the utmost levels of quality control and professionalism in the realization of the client's vision and plan. Additionally, we take great pride in always seeking mechanisms and means through which projects can be more sustainable on our economy and environment.

CGA engineering staff also creates, review, and update the codes, standards and ordinances for a number of municipalities. In addition we perform engineering site plan and engineering construction permit reviews for Dania Beach, West Park, and Weston.

Our staff wide range of experience allows us to provide comprehensive civil engineering services such as:

- Force main replacement
- Watermain
- Sanitary sewer
- Sanitary pump station
- Stormwater management
- Special assessments
- Water and Wastewater Treatment Plants
- Stormwater Management
- Municipal Facility Design & Permitting

CIVIL



- Cost estimating for horizontal improvements
- Expansion plans
- Odor control systems
- Design and permitting of municipal facilities
- Computer modeling for water distribution, wastewater conveyance, and stormwater management systems
- Utility rate studies
- Feasibility studies
- Design-build for utility infrastructure
- Design and permitting for infrastructure improvements

ENGINEERING



- Construction inspection and observation
- Municipal staff consultant reviewer for Site Plan and construction permit submittals
- Development of city engineering or planning standards, code, and ordinances
- Design of subaqueous and aerial crossings
- Utility bond program (\$100,000,000+)
- Special assessments and utility taxes
- State revolving fund (SRF)
- Preparation of a risk management program
- Storage tanks
- Evaluation of existing water distribution, wastewater conveyance, and stormwater management systems

SERVICES



STORMWATER MANAGEMENT

CGA has been the Drainage/Stormwater Management Engineer for the South Broward Drainage District (SBDD) since 1990. The firm was originally contracted to develop the first and only district-wide basin hydrologic and hydraulic analysis and stormwater comprehensive plan. CGA is also the District Engineer for Indian Trace Development District and Bonaventure Development District and has completed basin wide hydrologic and hydraulic modeling, including the master drainage system modeling, analysis and pumping station upgrades, large scale mitigation/wetlands plans and the updates of the comprehensive plan. CGA uses the latest in advance computer-assisted software technologies such as the Interconnected Pond Routing (ICPR), Hydraflow, Cascade and other current computer programs.

As District Engineer for ITDD, and BDD, our responsibilities include the review of all construction plans and specifications for conformance with the District criteria, as well as representation at District Board meetings to address technical and engineering issues. In addition, CGA has been successful in obtaining several millions of dollars in grants to accomplish the District's goals and objectives

Furthermore, CGA has also developed stormwater master plans for several municipalities including the Cities of Dania Beach, Lauderdale, Weston and the Town of Surfside. Within these cities we have provided a number of stormwater-related activities such as stormwater modeling, drainage calculations, pump station design and/or pump station rehabilitation, NPDES MS4 compliance, culvert design, canal extensions and other related hydraulic structures.

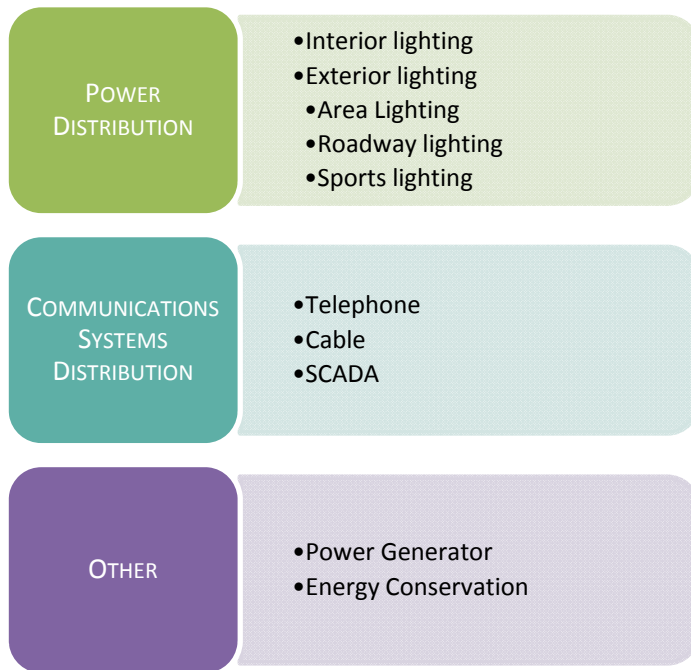


Our experienced drainage engineers keep abreast of the latest EPA, FDEP and SFWMD regulations with respect to drainage issues. They regularly summarize new regulations, their impact on clients and recommend actions to comply with the new regulation(s). As a result, the Department of Environmental Resources Management (DERM) invited CGA to conduct a presentation entitled "**Florida Unified Stormwater Rule**" on site March 27th, 2009. DERM Engineers and many South Florida consulting firms attended the presentation.

ELECTRICAL ENGINEERING

The CGA Electrical Department has broad capabilities for the infrastructure and the end use development for commercial, industrial and multi-housing residential projects.

The types of services provided include:



LAND SURVEYING & MAPPING

The Surveying and Mapping Division of CGA utilizes the latest in cutting edge technology when preparing surveys including GPS equipment, automated data collection, Laser Scanners, Underground utility detection technologies and a Vacuum/Slurry subsurface excavation system called the VaXcavator that exposes existing underground utilities. Operated by one of the field survey crews, it allows us to obtain sub-surface horizontal and vertical locations required for design, while realizing cost and time savings for our clients.

Additionally, our state-of-the-art Hypack software with Odom sounder allows us to offer hydrographic surveying services. By integrating with our Trimble GPS units, the equipment creates a three-dimensional model of the water body being surveyed and significant savings for our clients. Recognizing the value to our clients, CGA was among the first firms in Florida to acquire the 3D Laser ScanStation. **Our Surveying and Mapping staff can now scan virtually anything in half the time of conventional methods**, with a level of detail not available before.



The ScanStation can take a virtual, detailed snapshot of a site including ceilings, undersides of bridges, elevated pipe racks, tall facades, columns and towers. Areas that were previously difficult to access. It collects millions of data points of all items in a 360° horizontal and 270° vertical field of view, allowing a full field of view. This eliminates an additional



visit to capture data not covered in the original scope of work or the question as to where a shot was taken of an object. The **ScanStation** captures all the items at once in a permanent record that can be filed, including hundreds of high quality photos, and graphics or animations, from 3D to virtual walk-throughs of sites. It is **ideal for litigations, client presentations or commission meetings**. For added convenience, the survey data can be exported to whatever format our clients need, whether CADD or other software.

Process

The process we employ is equally as important as the equipment we deploy. All survey requests are assigned to a licensed surveyor and mapper who acts as the project manager. In addition, fieldwork is researched and calculated in the office for the crews prior to going out into the field. The required data is collected electronically using total station instruments, and then downloaded at the end of the day into our computer system for analysis and processing. This data is then provided to our technicians to create the final product, all under the watchful eye of the project manager. The final product is delivered to the client after undergoing our Quality Assurance/Quality Control process.

Safety

Safety is a primary concern at CGA. Therefore, a mandatory maintenance of traffic (MOT) training is held twice a year for our field crews and field crew supervisors. Monthly Safety meetings are held for the field personnel with a different topic discussed each month. Our field vehicles are equipped with strobe lights, proper signage, safety vests and cones.

One-stop Shopping

The Surveying and Mapping Division offers the services, staff and technology to ensure that every survey project is executed successfully, and to our clients' satisfaction.



- Boundary surveys
- Record (as-built surveys)
- Sub-surface utility location surveys



- Condominium document preparation
- Right-of-way mapping
- Topographic Surveys
- Utility and infrastructure layout
- Prepare legal descriptions



- Hydrographic survey
- Route surveys for engineering design
- Platting services
- Annexation maps

Diverse Clientele-Cities, Utilities and the General Public

The Surveying and Mapping Division client base includes land development clients, FPL, Florida Department of Transportation, Broward County Real Property Division and many cities within Broward, Dade and Palm Beach Counties, as well as the general public.

Survey Crews and Equipment

The Survey department maintains seven (7) field crews out of the Fort Lauderdale office and three (3) field crews out of our West Palm Beach office. Our firm has nine (9) survey grade GPS systems available and we are capable of both static and RTK GPS surveying. A standard inventory of survey equipment for each crew includes:

CGA	SURVEY	EQUIPMENT
<ul style="list-style-type: none">• Total Stations data collectors and levels• Hydrotrac HT 100 Echo Sounder• Geopack CAICE, EFB, CEFB• Civil 3D 2008	<ul style="list-style-type: none">• Vector (GPS baseline processing)• Cyclone 5.6 Laser Scanning software• Tracemaster Pipe and Cable Locator• Leica Scan Station II	<ul style="list-style-type: none">• Microstation V8• AutoCAD• AutoCAD LDD 2008• Trimble Geomatic Office• VSI VaXcavator (slurry excavation system)

INFORMATION TECHNOLOGY SERVICES

CGA Data Technologies Development Department offers professional and experience in the field of IT. Our knowledge spans from Desktop Support to complex Network implementations. We have been involved with municipal agencies ranging from stepping into managing an existing environment to designing, planning and implementation a new environment. Our different levels of expertise allow us to provide the right professional depending on the task required. We tailor our service specifically to your needs. As a Microsoft Gold Business Partner, CGA staff has full benefits and endless resources to assist in any technically related scenarios that may arise. What this means for our clients is full backup, support and business continuity.

Data Technology Development

CGA Data Technologies Development Department offers the latest in GIS software, and experience in GIS Application Development, 3D Visual Animation and Information Technology. CGA strives to bring new cutting edge technology to our ever expanding client base as soon as it is available, for that reason, ESRI, the world leader in the GIS software industry, invited CGA to join its team of business partners.

Application/Database Development

CGA has also integrated Application/Database Development into the department to escalate the value of custom end-user applications to our clients, and to provide custom-designed interactive web-based applications. With CGA as the Application Service provider (server host), our clients benefit from the latest technology and systems architecture that is required for the current competitive market. CGA's fundamental understanding of Application Development and Networking infrastructures provides a reliable and scalable solution.

Membership(s):	Authorized ESRI Business Partner Certified Microsoft Gold Partner
Certification(s):	FEMA Certified HAZUS Vendor
Product Development:	Developers of INKforce a GIS based mobile application for Code Enforcement Tracking (CET) Building and Permitting Tracking (BPT) Fire Inspections Tracking (FIT) Planning and Zoning (PNZ) Point of Sale (POS)

3D Animation

CGA realized the importance of 3D visual animation in helping clients “see” what a subdivision will look like before breaking ground or being able to “see” the interior of a model, room by room. CGA provides these innovative services to existing clients, and the feedback has been exciting. Clients recognize the impact this technology has when presenting projects to investors, City Commissions, bankers, and potential homebuyers. Imagine the value of visually flying through a subdivision, seeing every aspect of the development or selecting specific upgrades inside a model home and virtually walking inside, inspecting every room, such is the benefit of using 3D Animation.

Clients

CGA is currently providing full-scale GIS data development or implementation for the cities of Weston, West Park, Sunny Isles Beach, the Towns of Malabar, and Surfside, and the South Broward Drainage District. For the City of Lauderhill, CGA completed multiple data conversion projects involving public utilities and data conversion into the ArcGIS 9.1 environment.

BUILDING CODE SERVICES

The Building Code Services Division offers government customers the ability to help control costs and personnel concerns without losing control of those services. As an independent resource, CGA can tailor services and personnel to suit a specific public sector client. CGA can staff a full-service building department, providing technicians, inspectors, plans examiners and the building official. On the other hand, CGA offers a la carte services, with specific personnel and services on call for the specific needs of the municipality or government agency. Whichever scenario is utilized, whether ALL services are out-sourced to CGA or any portion of those vital services are contracted, the key to success for both the client and their citizens is that the municipality at all times maintains control over those services. *We the Contract Service Provider take our direction from the in-house staff and the appropriated appointed administrator.*

A key benefit to CGA’s flexible plan is that the public organization does not have to deal with fluctuation in workload or other personnel issues. As the private contractor, CGA can utilize more or less personnel to meet changing demands. Additionally, the public agency does not have to worry when personnel resign or retire from a position, since the private provider is the one to ensure that adequate staffing is in place at all times.

The types of services Building Code Services CGA provides include Building Department Administration, Plan Review for Permit Issuance, and Inspection Services.

BUILDING DEPARTMENT ADMINISTRATION	PLAN REVIEW FOR PERMIT ISSUANCE	INSPECTION SERVICES
<ul style="list-style-type: none"> • Software development and support • Permit technicians and permit administrators • File Maintenance and organization • Preparation and filing of all required forms and documents • Development and comparative analysis of permit fee schedules 	<ul style="list-style-type: none"> • Plan review for all building code disciplines by certified professionals with complete knowledge and understanding of the code • Establish turnaround times for all project types • Establish plan review for clients where timing is crucial • Peer review completed for quality assurance • FEMA requirements checked for compliance 	<ul style="list-style-type: none"> • All building code inspections conducted by certified professionals with a complete knowledge and understanding of the code • Inspections completed (pass or fail) the following business day, thoroughly and completely • Special needs inspections for code compliance • After hours, weekend and holiday inspections are available • Handicap accessibility a priority • Personal vehicle radio provided



As an off-shoot of CGA’s Government Contract Services, CGA officially launched INKforce™ in 2004. Using a Panasonic Toughbook, wireless connection and web browser, INKforce™ allows city and county inspectors to schedule, track and monitor the life cycle of all permitting and inspections directly from the field.

Now a leading developer of software solutions for government agencies, INKforce™ is a model system allowing for the increase in productivity, efficiency and collaboration in the areas of Code Enforcement Tracking (CET), Building Permitting Tracking (BPT), Planning & Zoning Tracking (PNZ), Fire Inspection Tracking (FIT) and Point of Sale (POS).

Miami-Dade County, an INKforce™ user, estimated the system increased productivity and efficiency by 30 percent, generating an estimated savings of \$500,000. The National Association of Counties (NACO) honored Miami-Dade’s exceptional improvement in its operations with a 2009 achievement award.

REDEVELOPMENT AND URBAN DESIGN

The newly formed Redevelopment and Urban Design Division was created to focus on the physical development of urban sites. Led by a veteran International City/County Management (ICMA)-recognized professional, the Redevelopment segment works on behalf of local Community Redevelopment Agencies (CRAs); the Urban



Design segment helps facilitate community design challenges. Employing an integrated multi-disciplinary approach, the division boasts a team with extensive academic backgrounds and experience in engineering, traffic engineering, surveying, construction management, code inspection, planning and zoning, landscape architecture, web design and management and geographic information systems services.

With expertise available under one roof, and extensive experience working with government officials and stakeholders, CGA seamlessly develops sustainable cities, downtowns and neighborhoods. Focusing on the built environment, we incorporate land use planning and development –from architecture and urban design, to transportation and system design, to transportation and systems design – into an overall realistic urban design that relates well to the community and region. We consider the past obstacles, as well as environmental impact and the diverse populations within the community. The result is balance of aesthetic, economic, environmental, social and political challenges to meet the public’s needs. Recent land use projects include urban revitalization, suburban subdivisions, ski and golf resorts and retail/office/commercial development. In every case, clients enjoy the convenience of “one-stop” shopping and a rational appraisal of the land’s limits to development.

LANDSCAPE ARCHITECTURE

The Landscape Architecture Department has a unique blend of qualified professionals that provide a variety of personal expertise as an underlay to their Landscape Architectural professions. They are educators, community leaders, activists, volunteers, artists, architects, sculptors and **LEED Accredited Professionals**. This mix of talent allows CGA to provide our Clients with holistic, well-rounded design solutions that, beyond considering all the functional and implementation issues needed to be resolved, ensure a design product that, once built, will provide for longevity, experience, value and unique identities. Our staff counts on Registered Landscape Architects with more than sixty (60) years of collective professional experience, supported by a strong team of experts.

Personnel breakdown:



2 registered landscape architects
1 urban designer and branding specialist
4 landscape designers; two with advanced graphic design and 3-D capabilities for presentation



3 registered arborists
4 landscape inspectors
2 environmental planners/biologists
1 environmental inspector

The Landscape Architecture group has considerable talent and ability within its ranks and also has the resources of the rest of the company to provide all services – expected as well as unexpected – that may be needed during the course of any project. The group has been able to successfully complete less traditional tasks such as applying for and obtaining grants to fund their landscaping projects: the City of Weston was the beneficiary of two separate grants for roadside landscaping. CGA was also responsible for the City of Dania Beach receiving a grant for median improvements landscaping.

The award-winning Landscape Architecture group prides themselves on their ability to coalesce and develop designs that speak to the uniqueness of each ‘place’. Community identity and branding are fundamentally important considerations for every project’s approach, principally because agencies, municipalities and residents increasingly are becoming aware of the civic value in developing projects that speak to the uniqueness of their communities. These can be built upon the existing architectural character of an area, as we have done in Bay Harbor Islands and their incredible concentration of MiMo buildings, or it can be built upon existing unique natural resources, quality of life considerations, or character of life issues. At CGA, we are not in the business of producing imposing one-size-fits-all approaches to projects.

Customer satisfaction is our primary goal, whether a project involves development or redevelopment, inspection, reporting or design, private client or a public entity. Our broad range of project experience includes:

Landscape Architecture experience includes:

<ul style="list-style-type: none"> • comprehensive plans • master planning • historic preservation • landscape and site planning • urban revitalization • hardscape • greenway and streetscape design • graphic design and presentation • recreational facilities design • trail open space design • environmental impact studies • feasibility studies • site analysis evaluation • habitat restoration 	<ul style="list-style-type: none"> • Environmental permitting and coordination with all required agencies • Vegetative habitat delineations and assessments • Vegetation surveys • Arborist and tree mitigation services • Natural resources and preservation monitoring and reporting services • Invasive exotic vegetation monitoring and reporting services • Wildlife habitat assessments 	<ul style="list-style-type: none"> • Wetland delineations and wetland functionality assessments • Development of wetland mitigation options with an option of profitable cost • Design of wetland mitigation plans for habitat • Development of wetland mitigation options with an option of profitable cost • Design of wetland mitigation plans for habitat creation or enhancement on or off site • Wetland mitigation monitoring and reporting services • Community branding
--	--	---

GENERAL PLANNING SERVICES

CGA is dedicated to providing innovative planning services that exceed our Clients’ expectations. With a diverse team of professionals and technical staff, CGA possesses the expertise and experience that encompasses all facets of the planning and development process. The firm provides complete development and site-plan review services, including due diligence report

writing, re-zonings, land use plan amendments, and comprehensive planning. CGA's planning staff possesses a thorough and complete understanding of planning processes from both a private and public perspective, ranging from the municipal to state-wide scales.

Several of our CGA planners currently serve as consulting staff members, as well as Community Development Directors, for several municipalities in Florida. This responsibility requires a complete understanding of planning policies and historic precedence to equitably administer zoning and developmental codes.

This role also requires stellar communication skills and the ability to maintain professional, working relationships with not only colleagues and staff persons but also with municipal officials, neighborhood activists and the community at-large. CGA anticipates regular dialogue and constant communication with City staff and stakeholders to ensure all work products satisfy all the necessary requirements.



CGA staff has worked on the Land Development and Zoning Codes for the cities of Miramar, Weston, Sunny Isles Beach, Treasure Island and the recently incorporated City of West Park in southern Broward County. Similarly, the Town of Surfside directed CGA to create a new form-based zoning code with much reliance on public input. A team of CGA planners and urban designers held a series of workshops, resulting in a document that was both generated through and is a reflection of citizen input.

Similar to our land development and zoning code experience, we provide current, comprehensive planning and/or zoning services to several municipalities throughout Florida and have acted as the primary Development Review Committee (DRC) consultant for a number of municipalities. These cities utilize CGA to perform site plan review services which include zoning, landscaping, engineering and traffic engineering. The applicants pay a cost recovery fee, which reflects the actual cost to perform the review. Through this mechanism, tax dollars are not used to cover the costs of site plan review. CGA's planning staff reviews the development plans within a timeframe established by the City, compiles comments, forwards the written comments to the City and attends the required meetings where they will be discussed.

ENVIRONMENTAL SPECIALTIES AND PERMITTING

The diverse and in-depth work experience of our environmental staff provides us with a critical understanding of current local and regional environmental planning and permitting issues and the historic impacts that have affected the southeast region, as well as the adaptive strategies that will be necessary to address climate change and rising sea levels. CGA's multi-disciplinary approach is reflected in the integrated



partnership of our environmental department with the many disciplines of our firm.

The integration of technical field skills, regulatory details and overall project requirements allows us to address project needs from inception to completion. Our environmental staff routinely coordinates details with owners, developers, design engineers, surveyors, as well as governmental agency. It is our goal to obtain reasonable, environmentally sensible solutions for our clients.

Our services include:

ENVIRONMENTAL	SPECIALTIES	PERMITTING
<ul style="list-style-type: none">•Ecosystem assessments - wetlands, wildlife corridors, endangered plants/animals, critical habitats, salt and freshwater marshes, cypress sloughs, mangrove swamps, lake and estuaries, coastal dunes and upland habitats.•Jurisdictional wetland (fresh and saltwater) delineations (USACOE, SFWMD, FDEP)•Site development and feasibility studies	<ul style="list-style-type: none">•Develop new Comp Plan Conservation and Coastal Management Elements, draft plan amendments and conduct evaluation and appraisal reports. Develop new data, inventory and analysis•Draft environmental land development codes•Construction Contract Administration•Grant Administration	<ul style="list-style-type: none">•Environmental Impact Assessments•Design wetland mitigation projects, conduct monitoring and compliance reporting•Environmental resource permitting for land development (wetland impacts, lake excavations, dredge-and-fill applications)•Consumptive Use Permitting

CONSTRUCTION MANAGEMENT SERVICES

Since 1983, the Construction Services Division has been an integral part of CGA providing a wide range of construction management services for municipalities and clients in the private sector.

From design through certification, CGA has an outstanding in-house Construction Management team with the training, certifications, and experience to handle any roadway, bridge, building, park or utility construction project including urban roadway reconstruction, rural widening or resurfacing, fixed and movable bridges, drainage, lighting and signalization, as well as landscape installation/relocation inspection and maintenance monitoring services.

In addition, our team possesses the expertise to assist with numerous specialized construction services such as constructability reviews, traffic control plan analysis, environmental services, public information, survey, utility coordination, schedule and claims analysis, innovative contracting method recommendations, value engineering



proposals, and innovative, project-specific special provision development to address unique technical or administrative aspects of a project.

Our knowledgeable staff will ensure the construction of successful, quality projects that are completed on time and within budget, yet with minimal impact to local residents, business owners and the public.

CONSTRUCTION ENGINEERING AND INSPECTION SERVICES (CEI)

Launched in 2002, the CEI Division primarily serves FDOT including the Florida turnpike, but also pursues contract with other transportation agencies such as the Miami-Dade Expressway Authority, Orange County Expressway Authority and the Department of Environmental Resources Management (DERM), providing construction management and inspection services for upcoming projects. We also engage in General Assign contracts, providing construction claims and critical path method scheduling analysis, as well as inspection services on an as-needed basis. Our expert engineering staff includes:

- Construction Project managers
- Office Engineers
- Construction Claim Analysts
- Project Engineers
- Scheduling Engineers
- Federal Construction Regulation Compliance Specialists
- Construction Inspectors
- Constructability Review Engineers
- Expert Witnesses
- Value Engineering Specialists

MICROBIAL ASSESSMENT AND INDOOR AIR QUALITY

CGA continues to take a leading role in the providing services that best suit the needs of clients in the South Florida region, with the addition of the Microbial Assessment and Indoor Air Quality Division. With the recent increase of mold claims and building-associated illnesses in South Florida, CGA now offers this vital service to an array of clients needing assistance with indoor air quality concerns. The department provides a full scope of indoor air quality consulting services ranging from baseline assessments to mold remediation oversight for the construction, development, insurance, investment, real estate, and property management industries. CGA employs state-of-the-art methodology and instrumentation for this line of services and maintains a staff of certified IAQ professionals to handle any concerns addressed by our clients.

CGA can provide the client with the following indoor air quality services:

INDOOR	AIR QUALITY	SERVICES
<ul style="list-style-type: none"> •Mold investigation •Mold sampling, pre-and post remediation •Baseline indoor air quality assessments •Bacteria sampling 	<ul style="list-style-type: none"> •Airborne pathogen sampling •Certified and experienced, unbiased recommendations •Moisture intrusion assessments •Mold remediation oversight and supervision 	<ul style="list-style-type: none"> •Sick Building Syndrome investigations •Volatile chemical sampling •Long-term datalogging of various indoor air parameters

EMERGENCY MANAGEMENT

The Emergency Management Services Division offers local governments and businesses comprehensive emergency management planning, mitigation, training, exercise and regulatory compliance services. CGA is an innovative consulting firm with an extensive history of providing contractual government services for cities throughout South Florida. Our longstanding municipal partnerships and government experience enables CGA to offer a comprehensive package of contracting services to local governments of which public safety is a vital component. Our experienced emergency managers, planners, public administrators, engineers, public utility specialists, and information technology staff can pool their talents to comprehensively address the full-range of disaster preparedness, response, and recovery needs of your organization.

Specifically, CGA's Emergency Management department provides:

EMERGENCY	MANAGEMENT	SERVICES
<ul style="list-style-type: none">•Comprehensive emergency management plans and Redevelopment Plans•Exercise and corrective action program with HSEEP Compliance•Long Term recovery plan and post disaster redevelopment	<ul style="list-style-type: none">•Comprehensive emergency management plans and redevelopment•Human resources and responder family plans•Evacuation shelter plans	<ul style="list-style-type: none">•Comprehensive training and outreach program•Continuity of operations and business continuity plans•Resource analysis and resource management plans

GRANTS APPLICATION SERVICES

CGA maintains a staff of approximately twelve (12) different professionals from a variety of disciplines including: Planning, Engineering, Landscape Architecture, GIS, Emergency Management, and Building Code Services; who are engaged in various aspects of Grants Applications Services. For over two decades these professionals have successfully identified, researched, applied for, received, administered and conducted contract compliance for a wide range of local, state and federal grants. Procuring and implementing these various grant programs have allowed numerous projects to become a reality serving the local communities; whereas otherwise a lack of funding would have prevented their fruition. CGA's experienced Grants Application Services staff understands not only the process which needs to be pursued, but also the creative nature of this specialized service, and the implementation aspect which ultimately leads to the desired results. Services can be provided on an hourly, or project by project basis depending on the client's needs and circumstances.



SECTION 5 METHODOLOGY AND APPROACH

METHODOLOGY

There are many scientific methodologies available to conduct a traffic carrying capacity analysis. However, it is important to consider the unique characteristics of Key West when applying them. For instance, in order to understand the vehicular delay experienced on a particular corridor, a travel time delay study can be employed. But for Key West, consideration needs to be given to outside factors such as Conch Tour routes, residential routes, prevalence of locations with transient licenses en route, availability of parking facilities, availability of bike routes, time of day utilization factors, and so on.

We will employ state-of-the-practice traffic analysis tools, but will calibrate them to accurately reflect the unique nature of Key West.

TRAVEL TIME DELAY

Using vehicles equipped with GPS travel time delay software, CGA will develop travel time delay runs on primary roadways throughout the Key West study area. This will allow us to understand how efficiently vehicular traffic is currently processed. These travel time delay runs will be conducted under numerous scenarios including the following:

BASELINE: minimal interference along roadway segments

PEAK-HOUR: maximum utilization of roadway segments

PEAK-HOUR USAGE SPECIFIC: delay runs when a tour operation is present, for example

TRAVEL TIME DELAY - BASELINE

In order to establish a baseline or optimal travel time delay result, CGA will conduct travel time delay runs during off peak hours when there is little vehicular and pedestrian activity. These will likely occur in the early morning hours **before tours and deliveries begin** and after **higher pedestrian volumes from nightlife have subsided**. This baseline will allow us to understand how well the streets are currently operating when no interference is present. This will provide a “best case” comparative so we can understand just how well the Old Town streets would perform without interference.



TRAVEL TIME DELAY – PEAK TRAFFIC

CGA will conduct comprehensive travel time delay runs during peak traffic periods to determine how well the existing roadway network functions when fully occupied. We will take before and after travel time delay runs on Conch Tour routes to determine the delay caused by the tours. This will help to quantify the impacts felt by residents along tour routes as well as motorists crossing the tour routes en

route to their final destination. Peak hour traffic will also include bicycles and pedestrians in addition to more traditional traffic. This will help to quantify the costs in terms of delay caused by non-traditional modes of transportation.



3-D TRAFFIC SIMULATION

CGA will develop a computer-generated microscopic traffic simulation for all primary intersections and roadway segments within the Key West study area. This will allow a comprehensive understanding of how well the roadway network is currently operating. It will also allow us to **develop limitless alternative scenarios** to examine the effects of various conditions including event traffic routing, construction detours and re-routing, and congestion management strategies. The traffic simulation can be utilized to develop optimal traffic signal timing and progression as well as primary and secondary routing systems. It is important to note that the **model developed for the City will be very cost effective and easy to modify as conditions change over time.**

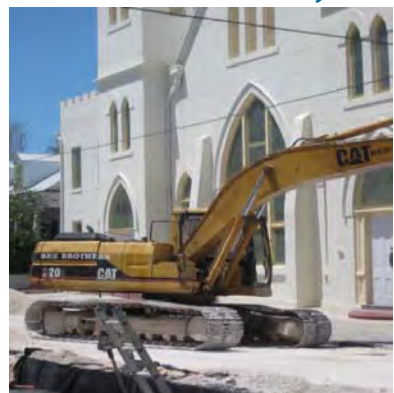


**3-D TRAFFIC SIMULATIONS:
DELIVERY TRUCKS**

CGA will develop alternatives analyses to consider the effects of transient deliveries on the overall transportation network. Our 3-D traffic simulation will account for roadway blockages and will demonstrate how motorists compensate for these inconveniences. This will assist city planners in developing effective truck routes and delivery schedules throughout the study area.



**3-D TRAFFIC SIMULATIONS:
CONSTRUCTION PROJECTS/DETOURS**



CGA will develop alternatives analyses to evaluate the true effects of construction projects on local traffic patterns throughout the Key West study area. This will lay the groundwork for congestion pricing so that city planners will have a clear understanding of the true costs (in terms of vehicular/pedestrian delay and conflicts) associated with construction project locations as well as time of day and day of year phasing. This information will help city planners to minimize impacts from construction projects, whenever possible, and will also allow for a clearer understanding of the pressures that will likely be experienced by nearby alternative travel routes.

**3D TRAFFIC SIMULATION:
NON-TRADITIONAL STREETS**

CGA traffic engineering team members have developed a high level of expertise in developing 3D traffic simulation models applicable to non-traditional streets and roadways. This will be particularly helpful in applying traditional traffic modeling techniques to the unique roadway network in the Key West study area. Model calibrations include narrow rights-of-way, alternative surface treatments, limited sight distances, co-mingled motorized, non-motorized and commercial utilization.



**3D TRAFFIC SIMULATION:
TRANSIT RIDERSHIP ALTERNATIVES**

CGA will develop alternatives analyses based upon varying transit ridership participation and availability. This will help city planners understand the costs/benefits of the provision of transit facilities in terms of overall impact to the Key West study area transportation network. Our traffic simulation model will be available for limitless alternatives analysis as existing and proposed transit routes are modified and ridership information is updated.

TRAFFIC DATA COLLECTION

CGA will compile existing and historical traffic data including:

- Average Daily Traffic (ADT) volume counts
- Peak-hour traffic counts
- Traffic accident data
- Intersection geometrics and control
- Right-of-way locations
- Parking facilities
- Lighting conditions
- Speed limits
- Availability of multi-modal facilities

Our data collection equipment includes passenger cars and mopeds equipped with **GPS based Travel Time Delay** monitoring devices. These vehicles are in-descript and **will not draw attention** throughout the data collection process. All of the CGA data collection equipment is designed to be



inconspicuous and will allow for implementation without disruption of background activity. Our 3-D laser scanners used to collect survey data can be stationed at the busiest intersections with heavy pedestrian and vehicular traffic and collect thousands of data points without any interruption of daily events. This will be very important when collecting data in and around the cruise ship docks as well as Duval Street and throughout Key West in general. CGA will also work to insure that the **residents of Key West do not experience any interruption of their daily lives** throughout this extensive data collection process.

NOISE ABATEMENT

CGA will monitor noise levels associated with various modes of transportation prevalent throughout the Key West study area. These may include tour trains/vehicles, buses, mopeds, passenger cars, motorcycles and pedestrians.



TRIP GENERATION, ORIGIN-DESTINATION STUDY

Counting vehicular traffic or pedestrian traffic has one big shortcoming; it doesn't tell you the number of people who WANT to get to a particular attraction. Counts will only tell you the number of people that actually get to (or through) a particular location. The roadway facilities in Key West



have physical limitations, they may not be processing all people trying to get to a particular attraction in the most direct and effective way. For example, ask any local if they would be willing to drive to the Southernmost Point monument and park to take a picture. Not many would take you up on that because the locals know just how congested that intersection can be. Instead, they may suggest you park a few blocks away and walk, or take a tour bus to the monument. So if we only take a traffic count for the monument, we will miss hundreds if not thousands of trips...This becomes very important later when we make

recommendations for improvements. For this reason, CGA will conduct comprehensive trip generation analyses throughout the Key West study area. This will highlight the actual number of trips that existing land uses are responsible for, rather than just the number of trips actually produced. By taking this traffic phenomenon into account, we can avoid under-representing the natural traffic patterns of Key West that may not be reflected by traditional traffic counting methods.



CONGESTION PRICING

We will work to quantify the costs (in terms of travel time delay, noise, levels of service, capacity and serviceability, to name a few) of traditional and non-traditional transportation modes and the subsequent effects on primary and secondary travel routes.

PUBLIC OUTREACH

One essential and integral aspect of our design processes is public participation. CGA has coordinated workshops to present, discuss and obtain feedback for many issues revolving around our varied and experienced municipal work. After we typically involve the community in establishing the goals, objectives and policies for the project, we engage them in the development of scenario alternatives and in design resolutions for the issues that are either shared by the community at large or which need to be compromised.

CGA has coordinated and moderated a series of different types of methods for community participation, each with a different focus and tailored to each Client relative to the requirements of the final product. These are itemized as follows:

PROJECT: **NORTHWEST DADE REGIONAL URBAN DESIGN**
Public Participation Type: Charrette and workshops
Capacity: Coordinator, Event moderator
Project Components: Urban design of existing conditions to improve traffic connectivity, improved character areas, pedestrian connectivity, livability, walkability, recreation use opportunities, public transportation improvements, and land use changes to include the redesign of shopping centers into planned mixed-use, town-center type, developments with particular attention to density and intensity

PROJECT: **DORAL BOULEVARD BEAUTIFICATION MASTER PLAN**
Public Participation Type: Workshop
Capacity: Moderator
Project Components: A community meeting was held to itemize the desires and priorities established by the community

PROJECT: **MIAMI GARDENS TOWN CENTER**
Public Participation Type: Community Workshop
Capacity: Event Moderator
Project Components: The project consisted of the development of a Transit-Oriented-Development master plan that addressed the unique issues present at the designated Town Center District by the City Council; composed of residential, commercial, and mixed-use components, coupled with a civic center planned around a network of character streets and open spaces; provisions for affordable housing; development of regulatory implementations; attention to pedestrian connectivity, livability, walkability, recreation use opportunities, public transportation improvements, and land use changes to include the redesign of a defunct shopping center into a planned mixed-use, town-center type, development with particular attention to massing, volume and architectural relationship to streetscapes.

PROJECT: **SUNNY ISLES BEACH TOWN CENTER**
Public Participation Type: Workshop
Capacity: Facilitator
Project Components: Urban design of existing conditions to improve traffic connectivity, improved character areas, pedestrian connectivity, livability, walkability and land use changes to include the redesign of shopping centers into planned mixed-use, town-center type, developments with particular attention to density and intensity.

PROJECT: **TPL OVERTOWN COMMUNITY PARK**
Public Participation Type: Charrette
Capacity: Coordinator and event moderator
Project Components: design of a 3/4 acre community park to serve as a center for community and neighborhood activity, in conjunction with the YWCA which had a strong presence as a civic participant

PROJECT: **AIA-150 MIAMI: EVERGLADES-BISCAYNE NATIONAL PARKS GREENWAY CHARRETTE**
Public Participation Type: Charrette
Capacity: Coordinating team member and event moderator
Project Components: Design of a system of Greenways and components of each over a distance of 38 miles of trails that cross agricultural, rural and urbanized areas, connecting Everglades National Park with Biscayne National Park. Components included a visitor’s center, bicycle recreational trails and crossings, environmental and sustainability treatments, canoe and kayak launch sites and quality of life issues.

These processes aided in obtaining the Community’s input and on gaining buy-in from the parties involved. CGA’s Landscape Architecture and Planning departments have worked and partnered successfully on several types of projects, integrating policy issues with those of the design of the built environment. This has resulted in a series of projects that showcase our portfolio, including:

Transit-Oriented Development Master Planning:

- Miami-Gardens Town Center Master Plan

Gateway Feature Design:

- Weston Entry Signs
- Doral Boulevard Gateways

Streetscapes and Corridor Planning:

- Doral Boulevard Master Plan
- Kane Concourse Improvements
- Weston Streetscapes

Multi-use Trail/Path Design:

- Weston City-wide Bike Paths
- Hurricane Monument Trail
- Heritage Trail Component
- Surfside Beachwalk

Urban Design/Neighborhood Planning:

- Surfside City-wide Design Guidelines
- Bay Harbor Neighborhood Improvements
- Indian Creek Master Plan
- Bonaventure Master Plan

Park Design:

- Weston Vista Park
- Fruit and Spice Park
- Sombrero Beach Park
- Mischon Park

Historic Preservation:

- Charles E. Deering Estate

SECTION 6 PERSONNEL

SHELLEY EICHNER, AICP

Vice President

SUMMARY OF QUALIFICATIONS

Ms. Eichner has almost 30 years of diversified planning and platting experience that includes securing land development approvals, land use plan amendments and local government planning. Ms. Eichner is a Vice President and a Partner of Calvin Giordano & Associates and oversees all private sector and public sector planning activities.

Ms. Eichner previously served as Senior Planner for the Broward County's Department of Planning and Environmental Protection. This required plat application management and supervision, creating a permit monitoring system, and monitoring compliance with all aspects of development approvals. Duties included coordinating the Development Review agencies in the preparation and adoption of the ordinances amending the Weston Development of Regional Impact.

PROJECT EXPERIENCE

Growth Management Director and Provision of General Planning Services: City of West Park, City of Weston, Town of Surfside, Town of Loxahatchee Groves. Responsible for all planning activities including plat and site plan review as well as the creation and modification of land development regulations; establishment of zoning, landscaping, sign codes; and, preparation of a master park plan. Oversees communication and coordination between City management, elected officials, major developers, and residents.

Site Plan Review: City of Miramar, City of North Lauderdale. Supervised preparation and presentation of site plan reviews and reports for the City of Miramar under ongoing cost recovery process. Plans from the City are distributed to various plan review disciplines and the final reports are presented in a cohesive and consistent manner.

Comprehensive Planning: Supervised preparation of Comprehensive Plan Evaluation and Appraisal Reports, EAR-based Amendments, Water Supply Plan Goals, and Capital Improvements Element Updates for various local governments.

Transit Oriented Development: Sheridan Station-side Village, Hollywood, Florida. Coordinated all planning and engineering services for the site plan application and land use plan amendment for the Sheridan Station-side Village, a mixed-use development integrating an existing Tri-rail station and other transit services.

Zoning Codes: City Weston, City of West Park, City of Sunny Isles Beach, Town of Surfside. Responsible for preparation, presentation and adoption of the City's first Zoning Code. This involved the coordination of workshops and consensus building between the elected officials, residents and developers in the City.

Town Center Zoning Overlay Districts: City of Hollywood, City of Miami Gardens, City of Sunny Isles Beach. Responsible for development of Zoning Overlay District to include zoning criteria, architectural, and landscape requirements leading to Town Center Master Plan implementation and for special districts.

EDUCATION

M.P.A., Florida Atlantic University, Boca Raton, Florida

B.A., Psychology and Management, McGill University, Montreal, Canada

PROFESSIONAL REGISTRATION

American Institute of Certified Planners
No. 116948

PROFESSIONAL ASSOCIATIONS

American Planning Association
Past President of Broward Chapter

PROFESSIONAL MEMBERSHIPS

Broward County Management Efficiency and Study Committee, Member – Appointed by County Commission; Chair of Growth Management Subcommittee, 2004-2006, & 2009-2011

Technical Advisory Group to the Broward County League of Cities, Chair, 2003-2006

Broward County Ad-Hoc Affordable Housing Committee, Member, 2005 – 2007

Staff Working Group for Public School Concurrency, 2005-Present, Chair 2008

JEFFERY A. MAXWELL, PE, PTOE

Director of Traffic Engineering

SUMMARY OF QUALIFICATIONS

Mr. Maxwell has 12 years of management experience in traffic, transportation and land development engineering. He has a strong record of success in managing new markets and territories while simultaneously creating and strengthening traffic engineering departments. He has extensive experience working directly with governmental review agencies including the Florida DOT, Colorado DOT, Arizona DOT and Nevada DOT as well as MPO's and local government agencies.

PROJECT EXPERIENCE

SR 80 Access Control Plan in the Vicinity of Loxahatchee Groves, Palm Beach County, Florida. Traffic and transportation analysis and design for an access control plan of SR 80 in the vicinity of Loxahatchee Groves. The project included intersection analysis, site access analysis, definition of performance standards, stakeholder and general public outreach and coordination with FDOT and adjacent communities.

Master Roadway, Equestrian and Greenways Plan, Loxahatchee Groves, Florida. Traffic and transportation analysis and design for an overall master roadway plan for the Town of Loxahatchee Groves Florida. The project included traffic analysis on all local, collector and arterial roadways throughout the Town, definition of design and performance standards as well as coordination with FDOT, stakeholders and the general public.

City of Weston, City Traffic Engineer, Weston, Florida. Perform all traffic and transportation analysis for the City of Weston including intersection analysis, traffic signal warrant analysis, alternative intersection design analysis including roundabouts, roadway signing and marking, development review including site plans and traffic studies and review of Developments of Regional Impact.

Traffic Engineering Consultant: City of Homestead, City of Greenacres, City of Parkland, City of Westpark, City of Sunny Isles Beach, Town of Surfside, Florida. Provide ongoing traffic and transportation engineering services as needed including review of developer site plans and traffic studies, intersection analysis, traffic signal warrant analysis, alternative intersection design analysis including roundabouts, roadway signing and marking

FDOT District IV General Planning Consultant, Florida. Provide traffic and transportation analysis and review for FDOT District IV on an ongoing basis. Recent projects have included review of Developments of Regional Impact, Interstate corridor studies, IOAR and IMR reviews.

EDUCATION

Bachelor of Science –
Civil Engineering

Master of Science -
Transportation

PROFESSIONAL CREDENTIALS

Professional Traffic
Operations Engineer
No. 821

Professional Engineer,
CO, No. 35848

Professional Engineer,
AZ, No. 41711

Professional Engineer,
NV, No. 17338

PROFESSIONAL AFFILIATIONS

Institute of Transportation
Engineers

American Society
of Civil Engineers

JAMES E. SPINKS III, PE, PTOE

Traffic Engineer

SUMMARY OF QUALIFICATIONS

Mr. Spinks currently serves as a Project Manager with extensive experience in the traffic engineering and transportation planning fields. Mr. Spinks has been involved in traffic operations, transportation planning, and ITS planning for more than seven (7) years. He has previous experience servicing a variety of clients such as the Florida Marlins, City of Miami, Broward County, Miami-Dade County, Florida's Turnpike Enterprise, and Florida Department of Transportation, Districts Four and Six. Currently, Mr. Spinks provides a variety of traffic engineering services for several cities within the South Florida area such as Weston, West Park, Sunny Isles Beach, Homestead, and the Town of Surfside which include traffic calming, site plan review, traffic impact study reviews, access management, and level of service analysis. In addition, he provides traffic impact services for several developments within South Florida. Mr. Spinks has the capability to develop scope and budget, and man-hour management. He is proficient in the use of several commonly-used traffic engineering software such as HCS, Synchro, Sim-Traffic, Corsim, Signal2000, as well as being familiar with Vissum, MicroStation, ArcView, ArcMap and GIS.

PROJECT EXPERIENCE

Arts Park Village at Young's Circle, Hollywood, Florida. As Project Manager for this mixed-use development located in downtown Hollywood, Mr. Spinks' tasks include traffic impact studies, parking inventory studies, shared parking analysis, level of service analysis, arterial and intersection analyses, and development of recommendations for approval of the proposed development.

Sheridan Station Transit Oriented Development (TOD), Hollywood, Florida. Mr. Spinks is the project manager for this mixed-use transit oriented development located in Hollywood, near the Sheridan Station Tri-Rail Station. Various traffic engineering and planning tasks will be performed for the proposed TOD including traffic impact studies, arterial and intersection level of service analyses, and development of recommendations for approval of the proposed TOD.

174 Street Median Closure Study, Sunny Isles Beach, Florida. Mr. Spinks serves as the project manager for this arterial study along SR-A1A near NW 174 Street in Sunny Isles, Florida, within Miami-Dade County. This study includes analysis of nearly a half-mile segment of SR A1A, which includes crash analysis, existing condition and future level of service analysis, access management review, benefit-cost analysis and recommendations.

Fort Lauderdale-Hollywood International Airport, Automated People Mover DEIS/FEIS, General Consultant, Broward County, Florida. Mr. Spinks served as a transportation engineer on this contract, performing a series of tasks for the proposed connection between the Fort Lauderdale-Hollywood International Airport and Port Everglades including: Travel Demand Data Collection and Analysis which includes development of a calibrated operational model that would properly reflect existing unique travel characteristics in the area; Planned Regional Impact Project Analysis which will determine the level of impact and identify any mitigation needed when these projects are in place; and Travel Demand Forecast using the Southeast Regional Planning Model 6.0 (SERPM6) which will refine the current Broward County MPO regional model in order to include parameters that would help in planning the future mode of access to support the planned improvements.

EDUCATION

B.S. in Civil Engineering,
University of Missouri,
Rolla, December 1998

PROFESSIONAL REGISTRATION

Professional Engineer,
State of Florida,
PE No. 66775, 2007

Professional Engineer,
Puerto Rico, 2006

PROFESSIONAL ASSOCIATIONS

Member of ITE

Member of National
Society of Black
Engineers

Member of American
Society of Civil Engineers

BRYAN KELLEY, EI

Traffic Engineer

SUMMARY OF QUALIFICATIONS

Mr. Kelley has 2 year of experience in traffic engineering and transportation planning for the private sector and local government. His traffic engineering experience includes: traffic impact analysis for private developers resulting in recommended roadway and operational improvements, access management plans, intersection operational analysis, signal warrant analysis, queuing analysis, crash analysis, roundabout analysis, shared parking analysis, traffic calming recommendations, Evaluation and Appraisal Reports (EAR), and Transportation Elements. He is knowledgeable of several software applications including Synchro, SimTraffic, HCS, Artplan, Rodel, AutoCad, and Microsoft Office.

PROJECT EXPERIENCE

Midway Road PD&E Study, St. Lucie County, Florida. Modeled and analyzed the existing and future traffic operations of the Midway Road arterial from South 25th Street to US-1 using Synchro and SimTraffic software. Included analysis of traffic operations of various proposed Midway Road cross-sections.

Florida Department of Transportation (FDOT) District 4 General Planning Contract, Ft. Lauderdale, Florida. Providing traffic engineering and planning services including Traffic Forecasting for FDOT road design projects. Review services provided for Interchange Justification Reports (IJR), Developments of Regional Impact (DRI), and Traffic Impact Studies (TIS).

Palm Beach County School Board, West Palm Beach, Florida. Provide traffic impact analysis for Manatee Elementary and Seminole Trails Elementary schools in Palm Beach County. Services include link and traffic operational analysis following the Palm Beach County Traffic Performance Standards guidelines to satisfy concurrency requirements. Services also include queuing analysis, and turn lane recommendations.

Traffic Sign Inventory Analysis, Weston, Florida. Reviewed and analyzed all existing traffic signs within the City of Weston. Recommendations of installing or removing traffic signs were made in compliance with MUTCD and the State of Florida requirements.

Site Plan Reviews: Lake Park, Jupiter, and Greenacres, Florida. Reviewed and prepared traffic study comments and site plan review comments of commercial and residential developments for municipalities of Lake Park, Jupiter, and Greenacres.

City of Weston General Planning & Platting Services, Weston, Florida. Performed signal warrant analysis, left turn analysis, and roundabout analysis for numerous intersections in the City of Weston. Modeled and analyzed signalized intersections and made recommendations for operational improvements including signal timing and phasing modifications and roadway geometrical improvements. Additional services include creating an inventory of substandard roadway striping and making recommendations based on priority.

SR 80 Access Control Plan in the Vicinity of Loxahatchee Groves, Palm Beach County, Florida. Mr. Kelley designed an access management plan of SR 80 in the vicinity of Loxahatchee Groves. The project limits included many of the local roadways located within the Town of Loxahatchee Groves. The project included projecting future development and traffic within the area as well as intersection operational analysis.

EDUCATION

B.S., Civil Engineering
University of Florida, 2007

CLAUDIA RUSSELL, EI

Traffic Engineer

SUMMARY OF QUALIFICATIONS

Ms. Russell is a Project Engineer at Calvin, Giordano & Associates with over three years of experience in the transportation planning and engineering field. She has software expertise in MS Office, MathCAD, Microstation, Geopak, AutoCAD Civil 3D, and MATLAB.

PROJECT EXPERIENCE

Engineer, Calvin, Giordano & Associates, Fort Lauderdale, FL.

Signal Design Experience

- **Pines/I-75.** Created signal component for 4 new mast arm installations and 1 span wire modification due to redesign of interchange from rural to urbanized area.
- **SR-7 and Isla Verde Dr.** Designed mast arm signal within FDOT right of way based on signal warrant for new development.
- **SW 184th Ave.** Adjusted signal heads based on new approaching lane configuration. Added mast arms for school zone flashers over multilane roadway.
- **Paloma Lakes.** Design of mast arm signal due to land development project which impacted 50% of existing span wire at the project intersection.
- **Hollywood Station.** Design of two new signal locations and modifying two existing mast arms due to driveways from new development. Coordinated the signal timing around railroad that ran parallel to the major street.
- **Joe DiMaggio.** Analysis of existing span wire system to determine if one pole could be relocated to accommodate proposed widening.
- Used soil information from geotech reports to determine foundation dimensions
- Loading analysis for all signal projects

Roadway Design

- **Manatee Isles in Weston.** Milling and resurfacing existing 2 mile roadway, converting from rural to urban typical section. Creating plans to show widening and median modifications to add bike plans for school parking. Adding curb and gutter and modifying drainage structures to collect additional runoff and avoid impacting adjacent wetlands.
- **SW 184th in Pembroke Pines.** Worked on paving plan during construction, on this design-build project, to provide proper cross slopes for the resurfaced roadway from the median to the existing swale. Adjusted MOT phase layout to accommodate changes in roadway construction. Provided plans for installation of school flasher on mast arms.
- Preparing construction cost estimate
- Quality Control and Review of Plans
- Develop signing and pavement marking plan component

Traffic Engineering and Planning

- Preparation of Transportation Element for Comprehensive Plans
- Level of service and capacity analysis of roadway network
- Site plan review for various municipalities and applicants
- Check LRTP for planned roadway improvements to mitigate roadway deficiencies
- Traffic Impact Studies
- Travel Demand Forecasting

EDUCATION

Bachelor of Science
Civil Engineering
Georgia Institute of
Technology, Atlanta, GA
2005

HONORS

Briaerean Cooperative
Education Honor Society

Chi Epsilon Civil
Engineering Honor Society

WIE Excellence Award

WILLIAM S. JOHNSON

Code Enforcement Director

SUMMARY OF QUALIFICATIONS

Mr. Johnson is the Director of Code Enforcement, a division of the Governmental Services Department with Calvin, Giordano & Associates, Inc. (CGA) since 2006. As Code Enforcement Director, he is responsible for managing all Code Enforcement Services contracts as it relate to operations and personnel. Prior to joining CGA, Mr. Johnson served as the Chief Zoning/Code Enforcement Division for the City of Dania Beach, Florida for 15 years.

PROJECT EXPERIENCE

Code Enforcement Supervisor, City of West Park, Florida (2006 to present). Mr. Johnson successfully implemented a Code Enforcement system with the emphasis on education and with the use of the CGA's created software system Ink Force. Mr. Johnson is also part of the City of West Park's Emergency Management Planning Team and its Adopt-A-Street Coordinator.

Chief Zoning/Code Enforcement Division Supervisor, City of Dania Beach, Florida (1990 to 2006). Mr. Johnson duties include managing the Code Enforcement Division and supervising four (4) code inspectors and four (4) administrative clerical employees. Also he performed administrative, supervisory and skilled technical work examining code and zoning plans and specifications, and coordinating and scheduling field inspections to determine compliance with all City zoning codes. Mr. Johnson was responsible for the comprehensive review of plans prior to the issuance of any permits and occupational licenses for both commercial and residential establishments and the field inspection thereof. A significant part of the job entailed discussions with contractors, builders, and owners regarding approval or disapproval of submitted plans for conformity with design and safety aspect requirements of the zoning code.

Code Enforcement Inspector, City of Dania Beach, Florida, Community Development Department, (1985 to 1990). Mr. Johnson was responsible for enforcing the City of Dania Beach code and ordinances. Mr. Johnson was also part of the City of Dania Beach Code Team which included the Building Official, Fire Marshall and the Broward Sheriff Office which was responsible for targeting the city's unsafe structures, particularly the drug/crack houses.

United States Air Force, (1982-1985). Mr. Johnson gained the rank of Staff Sergeant in charge of administrative duties for his unit.

EDUCATION

Golden Gate University,
Attended 1982-1984

Florida Memorial University,
Attended 1978-1979

David Lipscomb University,
Attended 1977-1978

Hollywood Hills High
School, Graduated 1977

PROFESSIONAL MEMBERSHIP

Florida Association of
Code Enforcement
(F.A.C.E.)

RAYMOND J. PIPPITT, PE

Director, Highway Design

SUMMARY OF QUALIFICATIONS

Mr. Pippitt has 35 years of experience in project management and is CGA's Director of Highway Design. His primary area of expertise is highway design, work zone traffic, quality control and project management. Mr. Pippitt's experience in managing transportation projects has included more than 100 projects. His extensive experience includes bridge replacement, bridge rehabilitation, new roadway construction, widening and reconstruction, milling and resurfacing and several traffic capacity and safety improvement projects. Mr. Pippitt served in the capacity of Deputy District Design Engineer in the Florida Department of Transportation's District 4 office for 10 years. His responsibilities included managing the District's Quality Control section, acting as the District Pavement Design Engineer, District Estimates Engineer and District Specifications Engineer. He also served an additional 9 years as a project manager with FDOT.

PROJECT EXPERIENCE

I-75 at Pines Boulevard (SR-820) LAP project FDOT/City of Pembroke Pines, FL. Acting as Engineer of Record Mr. Pippitt was in responsible charge of all design elements of the roadway design. Specifically related to Design Groups 3.3, 7.1 and 7.3, for the urbanization of this interstate interchange. City of Pembroke Pines City Engineer: Joe McLaughlin, PE (954) 435-6511 and FDOT PM: Leslie Wetherell, P.E. (954) 777-4438.

I-75/Alligator Alley FDOT, Broward County, FL. Acting as Engineer of Record Mr. Pippitt was in responsible charge of all design elements of the roadway design. Specifically related to Design Groups 3.3 and 7.1, for the Interstate RRR project to resurface and widen the inside shoulders for 12 miles of interstate. FDOT Project Managers: Christine Bacomo, P.E. (954) 777-4147 and Ronald Wallace, P.E. (954) 777-4641.

Lake Shore Drive from Lake Park Marina to US-1. Acting as Engineer of Record Mr. Pippitt was in responsible charge of all design elements of the roadway and drainage design. The project's objective was to correct a historic flooding problem in the area. The Town Manager for the Town of Lake Park Maria Davis (561) 881-3304.

I-95 Design/Build from the Broward/Palm Beach County Line to south of Linton Blvd., FDOT, Palm Beach County, FL. Design for the resurfacing of I-95, guardrail replacement and upgrade to current standards, bridge deck repairs, addition of shoulder barrier Noise Wall, drainage, ramp improvements, and signing and pavement markings. FDOT Project Manager: Henry Oaikhena, PE, (954) 777-4445.

SR-7/US441 FDOT, Broward County, FL. Acting as Engineer of Record for the median modification, addition of turn lanes and signing and pavement markings for this safety project. FDOT Project Manager: Ronald Wallace, P.E. (954) 777-4641.

SR-820/Pines Boulevard, Pembroke Pines, FL. These improvements along SR-820 were designed in a cooperative effort between the FDOT and the City of Pembroke Pines to facilitate needed roadway improvements in the City. These projects included milling and resurfacing, pavement reconstruction, widening, drainage, permitting, sidewalk, utility construction and relocation. City of Pembroke Pines PM: Paul Edelstein (954) 437-1115

EDUCATION

B.S. Civil Engineering,
Newark College of
Engineering (NJIT),
Newark, New Jersey

PROFESSIONAL REGISTRATION

Registered Professional
Engineer, State of Florida,
No. 33878

State of New Jersey
No. GE028506

Registered Professional
Planner, State of New
Jersey No. L1002752

PROFESSIONAL AFFILIATIONS

FICE Transportation
Committee

Florida Engineering Society

National Society of
Professional Engineers

Institute of Transportation
Engineers

American Society of
Highway Engineers

CERTIFICATIONS

FDOT - Advanced Work
Zone Traffic Control

FDEP - Stormwater, Erosion
and Sedimentation Control
Inspector

Raymond Pippitt, PE, page 2

Pembroke Roadway Corridor Improvements, Pembroke Pines, Florida. These improvements to seven project segments in southwest Pembroke Pines included milling resurfacing, roadway widening, median construction, pavement reconstruction, drainage, permitting, sidewalk, signing and maintenance of traffic. City of Pembroke Pines Project Manager: Paul Edelstein (954) 437-1115

I-95 at Oakland Park Blvd, FDOT, Broward County, Florida. Design of the widening of Oakland Park Blvd and ramp reconstruction for the I-95 interchange to provide for triple left turns from the southbound to eastbound ramp and triple right turns on the northbound to eastbound ramp. Signalization, lighting, bridge widening, signing and pavement markings and utility coordination. FDOT PM: Fausto Gomez, P.E. (954) 777-4466.

SR-A1A from West McArthur Boulevard to Hutchinson House West, Martin County, Florida. Acting as Engineer of Record Mr. Pippitt was in responsible charge of all design elements of the roadway design. Specifically related to Design Group 3.2 and 7.1 for the milling and resurfacing and widening of this 2 lane rural roadway. FDOT Project Manager: Fernando Morales, P.E. (954) 777-4687.

SR-845 Powerline Road from Oakland Park Boulevard to 29th Street, Broward County, Florida. Acting as Engineer of Record for the milling, resurfacing median modification safety project. FDOT Project Manager: Fausto Gomez, P.E. (954) 777-4466.

SR-704/Okeechobee Boulevard from Jog Road to Florida's Turnpike, Palm Beach County, Florida (1/13/03 – 1/24/05). Acting as Engineer of Record Mr. Pippitt was in responsible charge of all design elements of the roadway design. Specifically related to Design Group 3.3, Mr. Pippitt designed the maintenance of traffic plan for the section of Florida's Turnpike to facilitate the construction of two new pedestrian overpasses. Palm Beach County Project Manager: Morton Rose, P.E. (561) 684-4048

I-95 Weigh-in-Motion Stations Design, FDOT, Martin County, Florida. Design for construction of two weigh stations on I-95 in Martin County for FDOT's Motor Carrier Compliance Office. Blend of roadway and site development included grading, paving, drainage, architectural, lighting, permitting, utilities, signalization, weigh-in-motion instrumentation, surveillance system and lighting dissipation system. I was working in the capacity of Project Manager for FDOT reporting to Robert Bostian, P.E. (954) 777-4427.

I-95 HOV from Forest Hill Boulevard to South of Southern Boulevard, Palm Beach County, Florida. Design for the addition of HOV lanes on this section I-95. Project included milling and resurfacing, widening, drainage, permitting, utilities, lighting, retaining walls, and bridge widening. I was working in the capacity of Project Manager for FDOT reporting to Robert Bostian, P.E. (954) 777-4427.

I-95 HOV from North of Southern Boulevard to North of Congress Avenue, Palm Beach County, Florida. Design for the addition of HOV lanes on this section I-95. Project included milling and resurfacing, widening, drainage, permitting, utilities, lighting, retaining walls, and replacement of two bridges crossing I-95. I was working in the capacity of Project Manager for FDOT reporting to Robert Bostian, P.E. (954) 777-4427.

SR-805/SR-5 Dixie Highway/Olive Avenue Corridor Improvements. These seven projects along US-1 were designed in a cooperative effort between the FDOT and the City of West Palm Beach to facilitate needed roadway improvements and redevelopment efforts in the City. These projects included milling and resurfacing, pavement reconstruction, drainage, permitting curb and gutter, sidewalk, utility construction and relocation, signing and signalization. The projects also provided for traffic calming and aesthetic enhancements: roadway narrowing, decorative lighting, raised intersection design, landscaped bulb-outs and the construction of circular plaza. I was working in the capacity of Project Manager for FDOT reporting to Robert Bostian, P.E. (954) 777-4427.

ROBERT JACKSON, PSM

Director of Surveying and Mapping

SUMMARY OF QUALIFICATIONS

Mr. Jackson has 40 years of experience in all phases of land surveying including boundary, coastal control, hydrographic, route surveys, topographic, and as-built surveys; sketch and descriptions; legal descriptions, record plats; and, boundary descriptions for annexations and de-annexations for municipalities.

Mr. Jackson is highly active in professional surveying organizations and is currently President of the Florida Surveying and Mapping Society. In this role, he reviews Florida surveying laws and is helping to develop a plan to professionally address GIS mapping and new technologies in surveying. As part of this, he implemented memorandums of understanding with allied professions (planners, geologists, biologists, environmental scientists, lawyers, engineers, architects, landscape architects). He assisted the promotion of an effective voice in the Florida legislature and taught Florida Laws, a six-hour course required for professional surveyors. He supports the four-year-degree requirement and to benefit the University of Florida Scholarship Fund for the Geomatics program, he has organized golf tournaments which raised approximately \$10,000. As part of the Planting Seeds Program, he is spear-heading a plan to introduce the surveying profession to students throughout the nation. Prior to CGA, Mr. Jackson worked for the Florida Department of Transportation as a rodman, instrument man, and party chief. His last position there was in the Right-of-Way (R/W) Engineering Department Calculation Section, where he prepared R/W maps.

PROJECT EXPERIENCE

Diplomat Hotel, Hollywood, Florida. Prepared coastal control surveys for the 38-story Diplomat Hotel in accordance with 61G17-6 and 62B-33.09 of the Florida Administrative Code. Consultant for compliance with FEMA requirements; provided exhibits and elevation certificates that reflected compliance with FEMA.

Broward Boulevard (SR-7 to Andrews Avenue), Fort Lauderdale, Florida. Responsible for coordinate geometry calculations and R/W.

Survey Project Manager, Carr Residential Investments, Hampton Isles. Oversight of ingress/egress, drainage easements, and boundary surveys, topographic surveys, tree surveys for this 24-building condo project.

Survey Project Manager, Westbrooke Communities Projects – Pine Island, Miramar DRI, Quantum, Merrick Preserve, Meadow Pines. Oversight of projects that includes ingress/egress, drainage easements, and boundary surveys, topographic surveys, route surveys, and hydrographic surveys and letter of map revisions to the Federal Emergency Management Agency for various condominium projects including Canterbury in the City of Boynton, Monterey Bay in the City of Boynton Beach, Cobblestone in the City of Pembroke Pines, Cimarron in the Town of Davie, Merrick Preserve in the City of Margate and Montclair in the City of Miramar.

City of Weston, Florida. Serves as the FEMA Administrator as a function of a multi-service, multi-year contract that CGA has with the City.

PROFESSIONAL REGISTRATION

Professional Surveyor
and Mapper, State of
Florida No. 4158

PROFESSIONAL ORGANIZATIONS

President, Florida Surveying
and Mapping Society

Robert Jackson, PSM, page 2

SR-706, Palm Beach County, Florida. Responsible for coordinate geometry calculations of recorded plats, lot lines, and review of the title work for ownership. Worked with the Maintenance Engineer and the Location Survey Department to determine the maintained R/W.

FEMA Administration for the Cities of West Park and Weston, Florida.

Diplomat Condominium, Hollywood Beach, Florida. Surveyor for a 30-story high-rise. Mr. Jackson prepared condo exhibits survey and coordinated with the City of Hollywood on FEMA requirements.

Harbor Isles, Dania Beach, Florida. Oversight of project that includes ingress/egress easements, drainage easements, and boundary surveys, topographic surveys, for a 56-building condo project.

Thunderbird, Dania Beach, Florida. 10-building condo project.

Siena , Hollywood, Florida. 13-buildng condo project.

Tesoro, Miramar, Florida. 521-unit condo project

Alexan, Miramar, Florida. 28-rental buildings for Trammell Crow.

Ram Development. 15 rental buildings.

Annexation/De-annexation sketch and descriptions. Prepare sketch and descriptions incorporating or removing areas within a municipality that goes to vote in the legislative session. City of Dania Beach and the City of Lauderhill are two just to name a few.

MICHAEL LAWRENCE GREEN

GIS Specialist

SUMMARY OF QUALIFICATIONS

Mr. Green is a graduate of Florida Atlantic University. During Mr. Green's employment at Calvin Giordano and Associates, he has worked extensively on various projects with other departments including Planning, Engineering, Landscape and Emergency Management Services. The majority of Planning based projects have dealt with Municipal Comprehensive Plans and EAR based Amendments. These planning projects include Spatial & Tabular analysis of all relevant data and creation of custom map products & reports for each client. These map elements are created from scratch utilizing the most up-to-date data sources relevant to the client in question. In addition to his wide-ranging experience in mapping for communities around South Florida, Mr. Green has worked with mobile GPS solutions for internal departments and external clientele. The GPS solutions include an extensive knowledge of Topcon and Trimble mobile GIS handheld units, used in creating stand-alone GIS applications for field inventories. Some key projects using these stand-alone applications include a full tree inventory for the City of Weston and the City of Lauderdale Lakes. The applications utilize fully customizable menus that assist the field workers in data collection. Finally, Mr. Green has experience utilizing FEMA's HAZUS product for emergency management. A major project completed for the Seminole Tribe of Florida utilizing this software included the creation of custom wind and debris scenarios for all of the Seminole Reservations within Florida. The final product included a full HAZUS analysis that was broken down into three different storm scenarios. The data from the final scenarios was input into final reports to assist the Seminole Tribe in determining the amount of assistance they will need during the aftermath of a hurricane event.

Mr. Green has applied knowledge of ESRI GIS 9.3, ArcSDE, ArcInfo, ArcEditor, ArcView, ArcPad 8.0, ArcPad Application Builder 8.0, ArcScene/3d Analyst, HAZUS-MH MR3, Geocoding, Network Analyst, Spatial Analyst, ESRI ArcCatalog, Microsoft Office Suite, Adobe Photoshop, and Google's Sketch Up.

PROJECT EXPERIENCE

Research Assistant, Center for Urban and Environmental Solutions, Florida Atlantic University, Fort Lauderdale, Florida (August 2005–August 2007)

- **Marine Facilities Project**
 - Developed a comprehensive database of recreational boating facilities statewide for the Florida Fish and Wildlife Conservation Commission.
 - Created a methodology for the location and analysis of recreational boating facilities using Geographic Information Systems

- **Marina Site Suitability Project**
 - Conducted a marina site suitability analysis of Lee County, Florida using Geographic Information Systems
 - Drafted a marina siting methodology for use in additional counties throughout Florida

- **General GIS support**

EDUCATION

Master of Urban and Regional Planning with a specialization in Visual Planning Technology, Florida Atlantic University, May 2007

Bachelor of Arts in Geography with a specialization: Urban and Regional Systems, Ohio State University, Columbus, OH, June 2004

PROFESSIONAL ASSOCIATIONS

Florida Chapter of the American Planning Association

Florida Atlantic Planning Society

Broward County GIS Users Group

Delta Chi Fraternity

Michael Lawrence Green, page 2

GIS Specialist, Calvin, Giordano & Associates,
Fort Lauderdale, Florida (August 2007- Current)

- **Weston Sign Inventory**
 - Assisted in the Development and maintenance of a full Arcpad Mobile GIS Application. Including but not limited to creating attribute domains, creating ArcPad forms and developing look-up tables for database population.
 - Maintained the daily sign inventory data as well as completed the check in and check out process for data quality assurance.

- **Lauderdale Lakes Tree and Street Feature Inventory**
 - Assisted in the development and maintenance of a full Arcpad Mobile GIS Application. Including but not limited to creating attribute domains, creating ArcPad forms and developing look-up tables for database population.
 - Maintained the daily Tree and Street feature inventory including check-in and check-out process of the daily data collection for data quality assurance.
 - Combined all data into single shapefiles for a complete citywide dataset.
 - Completed analysis and created maps to show Tree and Street Feature coverage throughout the city of Lauderdale Lakes.

- **City of Greenacres Street Sign Inventory**
 - Utilizing data received from City Staff a database was created cataloging all street signs within the City of Greenacres
 - All signs were plotted utilizing the X/Y coordinate from field analysis by Public Works Staff.
 - All street signs were symbolized according the type of sign.
 - A map book was created utilizing the final symbolized database for use by Public Works staff.
 - A final interactive PDF was developed utilizing all pages of the Street Sign map book, each page was linked together to form a fluid document that can be utilized in the field.

- **Comprehensive Plan / EAR Based Amendment Projects**
 - Developed data and map elements for various Municipalities including:
 - Town of Malabar
 - City of Weston
 - City of West Park
 - Town of Loxahatchee Groves
 - Town of Pahokee
 - Town of Surfside

 - Worked in conjunction with the Planning Department to create all relevant maps for each element within the EAR.
 - Each element comprised of the essential maps to assist in visualizing the goals, objectives and policies stated within the Comprehensive Plan/EAR document.
 - All data used was obtained through various government agencies to assure the highest quality and accuracy during analysis.
 - Final map documents and data were archived for future review.

Michael Lawrence Green, page 3

- **Seminole HAZUS**

- Worked in conjunction with the Emergency Management Department to create Hurricane Wind and Debris disaster scenario's for the Seminole Tribe of Florida.
- Developed scenario's for 7 Seminole Tribe reservation utilizing ArcGIS and HAZUS-MH MR3.
- All final reports were developed utilizing the outputs from the HAZUS scenarios and final maps depicting the study region were created to show the impacts of each disaster scenario.

Intern, Ohio Department of Transportation, Department of Aerial Engineering, Columbus, Ohio (August 2003-May 2004)

- Scanned aerial photography for clients using high end scanners and Adobe Photoshop
- Digitized aerial photographs into ArcGIS shapefiles for use in transportation studies

HELENE WETHERINGTON, AICP, CEM

Director of Emergency Management Services

SUMMARY OF QUALIFICATIONS

Ms. Wetherington has more than 16 years of federal, state and local emergency preparedness, planning, response, and recovery experience. She has overseen comprehensive emergency management planning efforts with over 100 public, private, and non-profit organizations. In addition, she has developed state and local hazard-specific plans for terrorism response, wild land fires, radiological emergency preparedness, mass migration events, dike breach, flooding, and hurricanes. She has coordinated FEMA and state sponsored training programs, instructed numerous curriculums nationwide including FEMA's Evacuation and Re-entry Course. She participated in the Palm Beach County Transportation Study update and was instrumental in collection of the LIDAR data for update of the hurricane evacuation zones. She coordinated GIS integration efforts into the emergency management planning process in Palm Beach County and supported implementation of the persons with special needs and evacuation transportation assistance program. She has responded to over 20 federally declared disasters including hurricanes, floods, tornadoes, terrorism biological attack, wild land fires and mass casualty events. She is a certified emergency manager, EMAP assessor, and AICP certified planner.

PROJECT EXPERIENCE

Calvin, Giordano & Associates, Inc. (2005 to present). Ms Wetherington is the Emergency Management Services Director for the emergency management services division at CGA which focuses its services on the ongoing support of municipal and county emergency management programs in Florida. For Palm Beach County, she led planning efforts, a regional summit, behavioral survey, transportation study, and outreach products for Palm Beach County's vulnerable Lake Okeechobee / Herbert Hoover Dike response effort. She is managing the long-term development and maintenance of two municipal emergency management programs (West Park, and Weston) and supports numerous other local governments in the development of CEMPs, NIMS compliance, Continuity of Operations Plans, Post Disaster Redevelopment Plan, Economic Recovery Plans, training and ongoing exercises. CGA served as technical advisors and planning staff to the FEMA sponsored catastrophic planning effort in South Florida where CGA was responsible for developing numerous plan components.

ICF Consulting, Emergency Management and Homeland Security Practice, Senior Associate (2004-2005). Ms. Wetherington was the Project Manager for the National Capital Region (NCR) Regional Emergency Management Accreditation Program (EMAP) assessment which is a national pilot program to evaluate the emergency management capability of 18 jurisdictions in the NCR against national standards. She participated in the NCR 2005 evacuation exercise. She supported the development of the NIMS compliant Emergency Operations Plan for the City of Chicago. Ms. Wetherington supported the implementation of Homeland Security Presidential Directives 5 and 7 by drafting elements of the Universal Task List and the Target Capability List. She also supported the development of the National Infrastructure Protection Program as a subject matter expert to the healthcare and public health sector. Furthermore, she provided direct support to the Office for Domestic Security in the revisions to the Homeland Security Exercise and Evaluation Program (HSEEP) and served as a HSEEP instructor. She has served as exercise evaluator on homeland security related exercises in the State of Nebraska and Massachusetts. She also supported the development of the Family of Emergency Workers Plan for the regional planning agency in Massachusetts.

EDUCATION

Masters of Science in Public Administration - Florida Atlantic University, Boca Raton, Florida, 2004
Masters of Science in Urban and Regional Planning, Florida State University, Tallahassee, Florida, 1993
Bachelor of Arts in Political Science, Magna Cum Laude, University of North Florida, Jacksonville, Florida, 1991

PROFESSIONAL AFFILIATIONS

Florida Emergency Preparedness Association
American Planning Association
American Society for Public Administration
International Association of Emergency Managers
National Emergency Management Assessment Program (EMAP) Assessor
Governor's Hurricane Conference, Program Committee
South Florida Hurricane Conference

AWARDS

Palm Beach County Administrator's Golden Palm Award 2002 for Anti-Terrorism Program and plan development (2002)
1000 Friends of Florida Carl Feiss Award for excellence in planning (1999)

Helene Wetherington, AICP, CEM, page 2

Palm Beach County, Division of Emergency Management (DEM), Assistant Director (1998–2004). Ms. Wetherington administered DEM programs and personnel for planning, public outreach, training and exercise, recovery and mitigation programs. She served as liaison and coordinated with 37 municipalities, 100+ public/private/nonprofit partner organizations, state and federal government agencies ensuring consistency with State and National Response plans. Ms. Wetherington provided policy guidance in evacuation and shelter programs, as well as radiological emergency preparedness and anti-terrorism response programs. The Re-entry Plan developed in Palm Beach County under her leadership continues to be featured as a model in FEMA's Evacuation and Re-entry Course. The county introduced numerous evacuation and reentry related policy revisions during her tenure including the revision of the transportation analysis, collection and application of LIDR data to redefine hurricane evacuation zones, GIS integration into the decision-making process, and development of evacuation decision making time delineation tools for local evacuation decision making. She oversaw personnel and strategic planning processes, grants and contracts, and 14 million dollar budget. Ms. Wetherington was a member of the Regional Domestic Security Task Force and played a key role in response to over a dozen natural disasters and terrorist events in Palm Beach County. During her tenure with Palm Beach County, she responded to over a dozen large scale disasters including Hurricanes, Floods, Tornadoes, and the Boca Raton Anthrax attack. Her responsibilities included management of the Emergency Operations Center during activations and coordination with internal and external organizations at all levels of government.

Florida Department of Community Affairs, Division of Emergency Management, Area Coordinator and Community Assistance Consultant (1993–1998). Ms. Wetherington participated in statewide disaster deployments to over 10 federally declared disasters in Florida acting as response liaison in local EOCs and in the DFO during recover operations. As a state representative in the local EOC, she was responsible for supporting local evacuation decision making and regional coordination among counties. She provided planning and training support related to all hazards preparedness, response, recovery, and mitigation. Ms. Wetherington monitored county EMPA grants totaling \$800,000, and reviewed Comprehensive Emergency Management Plans (CEMPs) and five year strategic plans. She administered regional training programs, evaluated table-top and full-scale exercises, and conducted area meetings and presentations. Ms. Wetherington also served as State liaison to local, federal, private, and volunteer organizations on all related programs and policies. She coordinated development, review and exercise of SARA Title III hazardous materials plans (EPCRA) and CEMPs. Ms. Wetherington served as Coordinator between state, regional, and local government entities and federal funds distribution and provided staff support, research, and policy development recommendations for the State Emergency Response Commission.

Florida Coastal Management Program, Planner IV (1992–1993). Ms. Wetherington served as the Intergovernmental coordinator for the coastal information exchange between government agencies. She coordinated reporting requirements of coastal permitting and enforcement activities of coastal agencies. Ms. Wetherington also reviewed competitive grant applications for federal funding and conducted public outreach including presentations, training sessions, and articles for the newsletter.

LORRAINE TAPPEN, AICP

Senior Planner

SUMMARY OF QUALIFICATIONS

Ms. Tappen is a Senior Planner at Calvin, Giordano & Associates, Inc. working in both the Fort Lauderdale and West Palm Beach offices. She has over 7 years of experience in planning including preparing comprehensive plan amendments, zoning ordinances and community redevelopment plans.

PROJECT EXPERIENCE

Senior Planner, Calvin Giordano & Associates, Inc., Fort Lauderdale, Florida (May 2006- Present)

- Evaluation and Appraisal Reports: Martin County, St. Lucie County, City of Pahokee, Town of Malabar, Town of Surfside
- EAR-based amendments: City of Hollywood, City of Homestead (Transportation Element), City of Pahokee, City of Parkland, City of Weston, Town of Malabar, Town of Medley, Town of Surfside
- Complete Rewrite of the City of Fort Pierce Comprehensive Plan
- First Comprehensive Plans: City of West Park, Town of Loxahatchee Groves
- Capital Improvement Element Updates: City of Hollywood, City of Pahokee, City of West Park, City of Weston, Town of Malabar, Town of Medley, Town of Surfside
- 10-Year Water Supply Plan and Related Comprehensive Plan Amendments: City of Pahokee, Town of Medley
- Proportionate Fair Share and Concurrency Management System Ordinance for the City of Fort Pierce
- Annexation Study: Town of Medley

Senior Planner, Iler Planning Group, Palm Beach Gardens, Florida (2/04-4/ 06)

- Evaluation and Appraisal Reports: City of North Miami, Town of Medley
- Comprehensive Plan amendments: City of North Miami, City of Sebastian
- Community Redevelopment Plan for the City of Oakland Park
- Downtown Mixed Use District zoning code for the City of Oakland Park

Assistant Planner, City of Coral Springs, Coral Springs, Florida (9/01-1/ 04)

- Land development regulations to establish the Coral Springs Public Art Program
- Administration of neighborhood grant programs including landscaping and signage projects
- GIS maps for the city manager and planning and zoning departments
- Review of sign permit and paint color approval applications

PRESENTATIONS

"Using GIS to Promote Habitat for Humanity Programs," Florida Chapter of the American Planning Association Annual Conference, 2001.

"Creating Community Indicators to Help Meet Community Goals," Florida Chapter of the American Planning Association Annual Conference, 2002.

TRAINING

LEED for New Construction, U.S. Green Building Council, February 2008.

EDUCATION

Master in Urban and Regional Planning, Florida Atlantic University, December 2002

Bachelor of Science in Political Science, University of Miami, May 1988

PROFESSIONAL REGISTRATION

American Institute of Certified Planners (AICP), No. 019628

AWARDS AND ACTIVITIES

Member, U.S. Green Building Council

Vice President, Florida Atlantic Planning Society, April 2001 to April 2002

SECTION 7 QUALIFICATIONS

MASTER ROADWAY EQUESTRIAN AND GREENWAY PLAN **Loxahatchee Groves, Florida**



CGA completed a comprehensive Master Roadway, Equestrian and Greenway plan for the Town of Loxahatchee Groves which included a determination of **carrying capacities for non-traditional roadways** and transportation networks throughout the Town. CGA traffic engineers developed a Town-specific traffic engineering model to replicate existing roadway conditions that were not represented by traditional traffic modeling software. This enabled the Town to gain a clear understanding of the true impacts to the local roadway network posed by future land use modifications. Interactive public workshops were conducted throughout the planning process to solicit input from residents and stakeholders. Numerous presentations were made to the Town Council to receive feedback and direction from Town leaders as well as comments from the general public. The project included the **establishment of roadway carrying capacity thresholds for all roadways within the Town**. The project included traffic operational analyses on all primary intersections throughout the Town, definition of design and performance standards, analysis and coordination of non-motorized transportation networks and recommendations for roadway and greenway improvements. CGA team members developed ongoing working relationships with citizen's advisory committees, Town leaders and adjacent communities throughout the year-long project.

Client

Town of
Loxahatchee Groves

Contact information at time of project:

Mathew Lippman
Town Clerk
Frank Spence
Town Manager
14579 Southern Blvd
Suite 2
Loxahatchee Groves, FL
33470
(561) 793-2418

Project Date

2008-2009

Services Provided

Planning
Traffic Engineering
Civil Engineering

Principal in Charge

Shelley Eichner, AICP

Team Members

Jeffery Maxwell, PE, PTOE
James Spinks, PE, PTOE
Bryan Kelley, EI

Consultant Cost

\$68,000

CITY-WIDE CARRYING CAPACITY ANALYSIS

Weston, Florida



CGA traffic engineers have worked with City of Weston officials since 1996 to establish and maintain roadway and intersection operational levels of service throughout the city roadway network. This has been a multi-task project focusing on the development of a cost-feasible needs program. The analysis included trip generation and assignment of the revised Equitable Increment III (Park of Commerce) Development of Regional Impact development program, and subarea forecasting of corridor traffic demand with the five-year and build out year planning horizons using the Broward County Build out (FSUTMS) Model. The roadway program was developed to maintain Level of Service (LOS) D throughout the network, while minimizing the width of primary corridors due to physical constraints. Interconnectivity of multi-modal facilities was prioritized throughout the carrying capacity analysis. New signal locations were determined based on side street forecasts and were incorporated into the future capacity analysis using ART-PLAN. Signalization in-outs were based on signal timing parameters developed for each intersection based on anticipated demand. Final improvement program components have been included in the City's Five-Year Capital Improvements Program with annual review and updates. Funding for improvements and new signals was identified through a combination of grants and City funding sources.

Client

City of Weston

Contact information at time of project:

John Flint
City Manager
17200 Royal Palm
Boulevard
Weston, Florida 33326
(954) 385-2000

Project Date

1996 to the Present

Services Provided

General Traffic Engineering
Consulting Services

Principal in Charge

Shelley Eichner, AICP

Team Members

Jeffery Maxwell, PE, PTOE
James Spinks, PE, PTOE
Bryan Kelley, EI

Company Role

Prime

Consultant Cost

\$224,000/year

Change Orders

None

NORTH SHORE AND PARK ISLAND NEIGHBORHOOD IMPROVEMENTS

Miami Beach, Florida



As part of the City of Miami Beach Right-of-Way (ROW) Infrastructure Improvement Program, Calvin Giordano and Associates designed improvements for the North Shore and Park Island neighborhoods based upon documented recommendations in the North Shore Basis of Design Report (BODR). Improvements included traffic calming and streetscape enhancements such as crosswalks, bulb-outs, median enhancements, sidewalk enhancements and improved parking facilities to increase capacity and access. Locations included:

- 72nd Street
- 73rd Street
- 74th Street
- 75th Street
- 85th Street
- Parkview Island
- Dickens Avenue and Byron Avenue
- Tatum Waterway Drive and Bonita Drive

Client

City of Miami Beach

Contact information at time of project:

Richard W. Saltrick
City of Miami Beach
1700 Convention Center Dr.
Miami Beach, FL 33139
(305) 673-7071

Project Date

2009

Services Provided

Traffic Engineering
and Design

Principal In Charge

Shelley Eichner, AICP

Team Members

Jeffery Maxwell, PE, PTOE
James Spinks, PE, PTOE
Bryan Kelley, EI

Consultant Cost

Varies

TATUM WATERWAY DRIVE TRAFFIC ANALYSIS

Miami Beach, Florida



Calvin, Giordano & Associates developed a comprehensive traffic analysis of Tatum Waterway Drive. The analysis considered converting Tatum Waterway Drive between 77th Street and 79th Street from the existing two-way traffic flow to one-way only operation.

CGA collected existing conditions data and performed alternatives analysis using Synchro traffic simulation software. Consideration was given to the existing school access patterns within the project vicinity.

Client

City of Miami Beach

Contact Information at Time of Project

Richard W. Saltrick
City of Miami Beach
1700 Convention Center Dr.
Miami Beach, FL 33139
(305) 673-7071

Project Date

2009

Services Provided

Traffic Engineering
Analysis

Principal in Charge

Shelley Eichner, AICP

Team Members

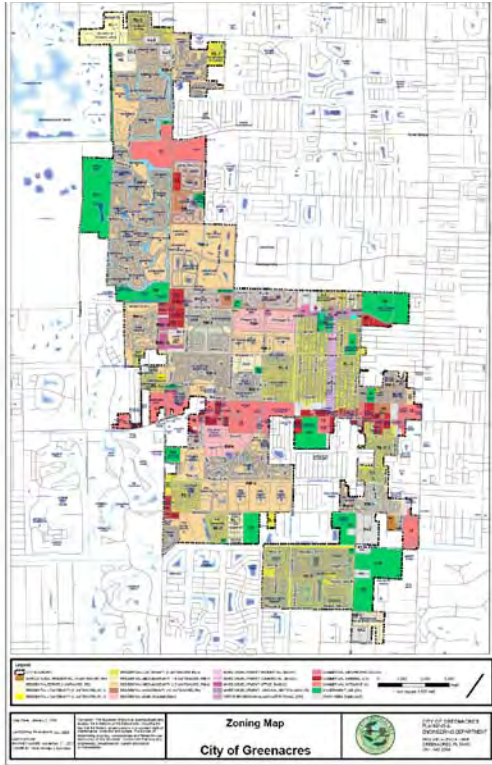
Jeffery Maxwell, PE, PTOE
James Spinks, PE, PTOE
Bryan Kelley, EI

Consultant Cost

\$50,000

TRAFFIC ENGINEERING

Greenacres, Florida



As part of CGA's Traffic engineering consultant contract with the City of Greenacres, the firm serves at the City's transportation engineering consultant. Some of the duties CGA is responsible for are but not limited to: attendance of land development and committee meetings; review of development petitions such as: site plans, special exceptions, temporary uses, traffic impact studies in compliance with Palm Beach County's Traffic Performance Standards and City Codes; the coordinator between the City and the petitioner's consultants to resolve issues related to the interpretation and implementation of the Traffic Performance Standards; investigation of existing facilities and review of impacts of the development on surrounding areas; review of proposed roadway improvement recommendations for established design criteria. After reviewing the information provided by the city CGA is responsible for offering responses to ensure that the proposed development meets County and City standards and develops reports for the City to review at the committee meetings. In addition to the Transportation Engineering Services CGA provides to the City we also recently added GIS services.

Client

City of Greenacres

Contact information at time of project:

Jaime Carrillo
Engineering Coordinator
5800 Melaleuca Lane
Greenacres, FL 33463
(561) 642-2055

Project Date

Ongoing

Services Provided

General Transportation
Engineering
Planning
GIS Services

Principal in Charge

Shelley Eichner, AICP

Team Members

Jeffery Maxwell, PE, PTOE
James Spinks, PE, PTOE
Bryan Kelley, EI

Company Role

Prime

Consultant Cost

\$77,000.00

CONCURRENCY MANAGEMENT SYSTEMS Homestead, Fort Pierce and Pahokee, FL



Calvin, Giordano & Associates, Inc. was responsible for the development and maintenance of diverse Concurrency Management Systems in diverse municipalities including the cities of Homestead, Pahokee and Fort Pierce. CGA also developed traffic study special districts in the City of Hollywood (Memorial Hospital) including phasing and implementation plans.

Client

Cities of Homestead, Pahokee, Fort Pierce, and Hollywood, Florida

Contact information at time of project:

Varies

Project Date

Ongoing

Services Provided

Traffic Engineering

Principal in Charge

Shelley Eichner, AICP

Team Members

Jeffery Maxwell, PE, PTOE
James Spinks, PE, PTOE
Bryan Kelley, EI

Consultant Cost

Varies

FDOT DISTRICT IV GENERAL TRANSPORTATION PLANNING SERVICES

Broward County, Florida



As part of CGA's district-wide general planning consultant contract with the Florida Department of Transportation District IV, the firm provides a wide range of transportation planning services for the five-county study area. These services include:

- Design Traffic Forecasting
- Access Management Studies
- Development of Regional Impact (DRI) reviews
- Broward County Action Plan Reviews
- Park-and-Ride Lot Studies
- IJR, IMR, and IOAR Studies
- Microscopic Simulation Studies (CORSIM)

Determination and evaluation of future travel demand was conducted at more than 300 intersections and corridors, including the proposed Indian Street Bridge alignment along SR-714, SR-818/Griffin Road, and Orange Drive crossover bridges from Nob Hill Road to Pine Island Road, I-75 from the Sawgrass Expressway to Miramar Parkway, and I-95 from Commercial Boulevard to Glades Road.

Client

Florida Department of
Transportation, District IV

Contact information at time of project:

Chon Wong
Project Manager
3400 W. Commercial Blvd.
Fort Lauderdale, FL 33309
(954) 777 4659

Project Date

Ongoing

Services Provided

General Transportation
Engineering
Planning

Principal in Charge

Shelley Eichner, AICP

Team Members

Jeffery Maxwell, PE, PTOE
James Spinks, PE, PTOE
Bryan Kelley, EI

Contract Amount

\$450,000/yr

SR 80 / SOUTHERN BLVD ACCESS MGMT PLAN

Loxahatchee Groves, Florida



Traffic and transportation analysis and design for an access control plan of SR 80 in the vicinity of Loxahatchee Groves. The project included intersection analysis, site access analysis, definition of performance standards, stakeholder and general public outreach and coordination with FDOT and adjacent communities.

Client

Town of
Loxahatchee Groves

Contact information at time of project:

Mathew Lippman
Town Clerk
Frank Spence
Town Manager
14579 Southern Blvd
Suite 2
Loxahatchee Groves, FL
33470
(561) 793-2418

Project Date

2009

Services Provided

Planning
Traffic Engineering
Civil Engineering

Principal in Charge

Shelley Eichner, AICP

Team Members

Jeffery Maxwell, PE, PTOE
Bryan Kelley, EI

TOWN-WIDE NEIGHBORHOOD TRAFFIC CALMING Surfside, Florida



 **TRAFFIC MANAGEMENT PROGRAM**
BYRON AVENUE AND ABBOTT AVENUE  MARCH 2009

As the Town's traffic engineering consultant, CGA conducted a town-wide traffic analysis to determine appropriate neighborhood traffic mitigation measures. The analysis included conversion of two-way stop control intersections to four-way stop control, installation of speed tables and the conversion of two-way roadway segments to one-way operation.

The analysis included the development of a comprehensive traffic flow model to determine the impacts of proposed traffic calming measures. CGA also provided extensive public outreach and coordination between citizen groups and Town staff.

Client

Town of Surfside

Contact information at time of project:

Gary Word
Town Manager
9293 Harding Avenue
Surfside, Florida 33154
(305) 861-4863

Project Date

2009

Services Provided

Traffic Engineering

Principal in Charge

Shelley Eichner, AICP

Team Members

Jeffery Maxwell, PE, PTOE
James Spinks, PE, PTOE
Bryan Kelley, EI

Consultant Cost

\$100,000

TRAFFIC ENGINEERING CONSULTING SERVICES Parkland, FL



As part of CGA's Traffic engineering consultant contract with the City of Parkland, the firm serves as the City's transportation engineering consultant and has been since 2005. Some of the duties CGA is responsible for are but not limited to: attendance of land development committee meetings; review of development petitions such as: site plans, special exceptions, temporary uses, traffic impact studies in compliance with Palm Beach County's Traffic Performance Standards and City Codes; coordinator between the City and the petitioner's consultants to resolve issues related to the interpretation and implementation of the Traffic Performance Standards; investigation of existing facilities and review of impacts of development on surrounding areas; review of proposed roadway improvement recommendations for established design criteria.

After reviewing information provided by the City of Parkland, CGA is responsible for offering responses to ensure that the proposed development meets County and City standards and develops reports for the City to review at the committee meetings. In addition to the Transportation Engineering Services CGA provides to the City we also provide civil engineering, land surveying, and planning to various projects throughout the City.

Client

City of Parkland

Contact information at time of project:

Caryn Gardner-Young
City Manager
6600 University Drive
Parkland, FL 33067
(954) 753-5040

Project Date

Ongoing

Services Provided

General Transportation
Engineering
Planning

Principal in Charge

Shelley Eichner, AICP

Team Members

Jeffery Maxwell, PE, PTOE
James Spinks, PE, PTOE
Bryan Kelley, EI

Consultant Role

Prime

Consultant Cost

\$92,000.00

TRAFFIC IMPACT ANALYSIS

Lake Park, Florida



CGA is providing transportation engineering review services, in accordance with Article 12: Traffic Performance Standards of the Palm Beach County Unified Land Development Code. CGA's services ensure that proposed development does not place an undue burden upon the area transportation network beyond what the system is capable of accommodating at an acceptable level of service. CGA's traffic impact study reviews also evaluated the necessity to provide left and right-turn lanes at strategic locations, based upon Palm Beach County's Parking Lot and Street Access Design Criteria and Standards.

Because of the joint effort between numerous government agencies with jurisdiction along Northlake Boulevard, a collective approach to traffic management along this corridor was established. This extensive governmental agency coordination was also required with officials from Palm Beach County, FDOT, and local municipalities. Further, access management issues were addressed pursuant to Rules 14-96 and 14-97, and evaluated against ADA regulations.

Client

Town of Lake Park

Contact information at time of project:

Maria V. Davis
Town Manager
650 Old Dixie Highway
Lake Park, Florida 33403
(561) 881-3304

Project Date

Ongoing

Services Provided

Transportation Engineering
Planning
Civil Engineering

Principal in Charge

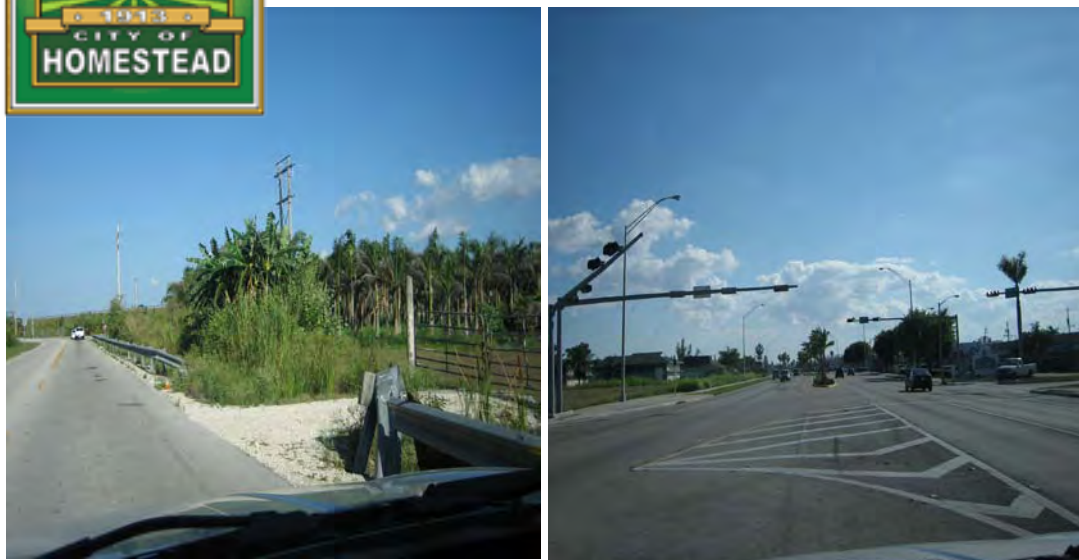
Shelley Eichner, AICP

Team Members

Jeffery Maxwell, PE, PTOE

TRAFFIC CONSULTANT SERVICES

Homestead, Florida



Calvin, Giordano & Associates, Inc. (CGA) serves as the Traffic Consultant firm to the City of Homestead. Duties consist of the creation and maintenance of the City's Concurrency Management System, Continuous and on-going Concurrency and Traffic Reviews to Site Plan Applications, Land Use Amendments and Rezoning throughout the City. Additionally, CGA has been implementing the City's Transportation and Transit Master Plan through a series of tools such as updates to the Code of Ordinances, the Creation of Traffic Performance Standards, and collaborating with the City's Urban Designer and City staff on the Commercial Design Guidelines.

CGA has continued to provide seamless traffic and transportation coordination with different intergovernmental organizations throughout the different stages of the planning process. CGA also provides continuous support to City staff through Development of Regional Impact reviews and large scale reviews working together with City staff. CGA has also works with City staff in implementing the Code of Ordinances, the Comprehensive Plan, the Commercial Design Guidelines, the Transportation and Transit Master Plan, the Concurrency Master Plan, the Proportionate Fair Share and all other tools that have been created and tailored specially for the City of Homestead by CGA staff in cooperation with City staff.

Client

City of Homestead

Contact information at time of project:

Sergio Purrinos
Director of Development Services
790 N. Homestead Blvd
Homestead, FL 33030
(305) 224-4510

Project Date

2006 – Present

Services Provided

Transportation Planning
Traffic Engineering

Principal in Charge

Shelley Eichner, AICP

Team Members

Jeffery Maxwell, PE, PTOE
James Spinks, PE, PTOE
Bryan Kelley, EI

Consultant Cost

\$263,942.00

TRAFFIC ENGINEERING

Palm Beach County School District



As part of CGA's continued work with the Palm Beach County School District Traffic Impact Analysis is performed to evaluate the traffic impacts associated with the proposed developments in accordance with Article 12: Palm Beach County Traffic Performance Standards of the Palm Beach County Unified Land Development Code. The Palm Beach County Unified Land Development Code is used to identify any potential traffic concurrency problems that may arise due to the school construction or reconstruction. Traffic Impact Analysis has been performed for the construction or expansion of the following Palm Beach County Schools:

- H.L. Watkins Middle School
- Panther Run Elementary School
- Liberty Park Elementary School
- Birkdale Elementary School
- Berkshire Elementary School
- Coral Reef Elementary School
- Palm Beach Gardens High School
- Barton Elementary School
- Eisenhower Elementary School
- CO Taylor Elementary School
- Citrus Cove Elementary School
- Banyan Creek Elementary School
- Northboro Elementary School

Client

Palm Beach County
School District

Contact information at time of project:

Glen Armbruster
Senior Planner
3300 Forest Hill Blvd
West Palm Bch, FL 33406
(561) 434-8000

Project Date

Ongoing

Services Provided

General Transportation
Engineering

Principal in Charge

Shelley Eichner, AICP

Team Members

Jeffery Maxwell, PE, PTOE
James Spinks, PE, PTOE
Bryan Kelley, EI

Company Role

Prime

Consultant Cost

\$242,000.00

**SECTION 8 REPRESENTATIVE CARRYING CAPACITY TRAFFIC
STUDY PROJECTS AND CLIENT REFERNCES**

CITY-WIDE CARRYING CAPACITY ANALYSIS

Weston, Florida



CGA traffic engineers have worked with City of Weston officials since 1996 to establish and maintain roadway and intersection operational levels of service throughout the city roadway network. This has been a multi-task project focusing on the development of a cost-feasible needs program. The analysis included trip generation and assignment of the revised Equitable Increment III (Park of Commerce) Development of Regional Impact development program, and subarea forecasting of corridor traffic demand with the five-year and build out year planning horizons using the Broward County Build out (FSUTMS) Model. The roadway program was developed to maintain Level of Service (LOS) D throughout the network, while minimizing the width of primary corridors due to physical constraints. Interconnectivity of multi-modal facilities was prioritized throughout the carrying capacity analysis. New signal locations were determined based on side street forecasts and were incorporated into the future capacity analysis using ART-PLAN. Signalization in-outs were based on signal timing parameters developed for each intersection based on anticipated demand. Final improvement program components have been included in the City's Five-Year Capital Improvements Program with annual review and updates. Funding for improvements and new signals was identified through a combination of grants and City funding sources.

Client

City of Weston

Contact information at time of project:

John Flint
City Manager
17200 Royal Palm
Boulevard
Weston, Florida 33326
(954) 385-2000

Project Date

1996 to the Present

Services Provided

General Traffic Engineering
Consulting Services

Principal in Charge

Shelley Eichner, AICP

Team Members

Jeffery Maxwell, PE, PTOE
James Spinks, PE, PTOE
Bryan Kelley, EI

Company Role

Prime

Consultant Cost

\$224,000/year

Change Orders

None

MASTER ROADWAY EQUESTRIAN AND GREENWAY PLAN Loxahatchee Groves, Florida



CGA completed a comprehensive Master Roadway, Equestrian and Greenway plan for the Town of Loxahatchee Groves which included a determination of **carrying capacities for non-traditional roadways** and transportation networks throughout the Town. CGA traffic engineers developed a Town-specific traffic engineering model to replicate existing roadway conditions that were not represented by traditional traffic modeling software. This enabled the Town to gain a clear understanding of the true impacts to the local roadway network posed by future land use modifications. Interactive public workshops were conducted throughout the planning process to solicit input from residents and stakeholders. Numerous presentations were made to the Town Council to receive feedback and direction from Town leaders as well as comments from the general public. The project included the **establishment of roadway carrying capacity thresholds for all roadways within the Town**. The project included traffic operational analyses on all primary intersections throughout the Town, definition of design and performance standards, analysis and coordination of non-motorized transportation networks and recommendations for roadway and greenway improvements. CGA team members developed ongoing working relationships with citizen's advisory committees, Town leaders and adjacent communities throughout the year-long project.

Client

Town of
Loxahatchee Groves

Contact information at time of project:

Mathew Lippman
Town Clerk
Frank Spence
Town Manager
14579 Southern Blvd
Suite 2
Loxahatchee Groves, FL
33470
(561) 793-2418

Project Date

2008-2009

Services Provided

Planning
Traffic Engineering
Civil Engineering

Principal in Charge

Shelley Eichner, AICP

Team Members

Jeffery Maxwell, PE, PTOE
James Spinks, PE, PTOE
Bryan Kelley, EI

Consultant Cost

\$68,000

SECTION 9 REFERENCES

TRAFFIC OPERATIONS REPORT

St. Lucie County, Florida



As a part of a widening project for St. Lucie County, Calvin, Giordano & Associates, Inc. as a sub consultant to H.W. Lochner, Inc. developed traffic projections for Midway Road from Florida's Turnpike to South 25th Street to be used in the evaluation of corridor design alternatives..

Traffic projections for the study area of Midway Road between Florida's Turnpike and South 25th Street was developed using the FDOT District Four adopted traffic projection methodology. The expected year open to traffic is 2010, with an anticipated design year of 2030.

Jenkins Road, which is within this study's limits, is planned to be widened and connected from Midway Road to Angle Road, after 2010 per the 2030 St. Lucie County Long Range Transportation Plan (LRTP). This reconstruction is expected to significantly impact Midway Road, existing Jenkins Road, and Selvitz Road. Therefore, reasonable assumptions were made in order to take this impact into account for future traffic projections.

Client

H.W. Lochner, Inc.

Contact information at time of project:

John (Jack) Box, P.E.
Sr Transportation Engineer
13577 Feather Sound Drive
Suite 600
Clearwater, FL 33762
(727) 572-7111
(727) 571-3371 (Fax)
jbox@hwlochner.com

Project Date

2007 to the present

Project Value

\$100,000

Services Provided

Traffic Operation Report
Traffic Signal Design

Team Members

Jeffery Maxwell, PE, PTOE

TRAFFIC ENGINEERING CONSULTING SERVICES Parkland, FL



As part of CGA's Traffic engineering consultant contract with the City of Parkland, the firm serves as the City's transportation engineering consultant and has been since 2005. Some of the duties CGA is responsible for are but not limited to: attendance of land development committee meetings; review of development petitions such as: site plans, special exceptions, temporary uses, traffic impact studies in compliance with Palm Beach County's Traffic Performance Standards and City Codes; coordinator between the City and the petitioner's consultants to resolve issues related to the interpretation and implementation of the Traffic Performance Standards; investigation of existing facilities and review of impacts of development on surrounding areas; review of proposed roadway improvement recommendations for established design criteria.

After reviewing information provided by the City of Parkland, CGA is responsible for offering responses to ensure that the proposed development meets County and City standards and develops reports for the City to review at the committee meetings. In addition to the Transportation Engineering Services CGA provides to the City we also provide civil engineering, land surveying, and planning to various projects throughout the City.

Client

City of Parkland

Contact information at time of project:

Caryn Gardner-Young
City Manager
6600 University Drive
Parkland, FL 33067
(954) 753-5040

Project Date

Ongoing

Services Provided

General Transportation
Engineering
Planning

Principal in Charge

Shelley Eichner, AICP

Team Members

Jeffery Maxwell, PE, PTOE
James Spinks, PE, PTOE
Bryan Kelley, EI

Consultant Role

Prime

Consultant Cost

\$92,000.00

TOWN-WIDE NEIGHBORHOOD TRAFFIC CALMING Surfside, Florida



 **TRAFFIC MANAGEMENT PROGRAM**
BYRON AVENUE AND ABBOTT AVENUE  MARCH 2009

As the Town's traffic engineering consultant, CGA conducted a town-wide traffic analysis to determine appropriate neighborhood traffic mitigation measures. The analysis included conversion of two-way stop control intersections to four-way stop control, installation of speed tables and the conversion of two-way roadway segments to one-way operation.

The analysis included the development of a comprehensive traffic flow model to determine the impacts of proposed traffic calming measures. CGA also provided extensive public outreach and coordination between citizen groups and Town staff.

Client

Town of Surfside

Contact information at time of project:

Gary Word
Town Manager
9293 Harding Avenue
Surfside, Florida 33154
(305) 861-4863

Project Date

2009

Services Provided

Traffic Engineering

Principal in Charge

Shelley Eichner, AICP

Team Members

Jeffery Maxwell, PE, PTOE
James Spinks, PE, PTOE
Bryan Kelley, EI

Consultant Cost

\$100,000

SECTION 10 REQUIRED FORMS

ANTI-KICKBACK AFFIDAVIT

STATE OF FLORIDA

SS:

COUNTY OF MONROE

I the undersigned hereby duly sworn, depose and say that no portion of the sum herein response will be paid to any employee of the City of Key West as a commission, kickback, reward or gift, directly or indirectly by me or any member of my firm or by an officer of the corporation.

BY: 
Dennis J. Giordano, President

sworn and prescribed before me this 31 day of March 2010


NOTARY PUBLIC, State of Florida



My commission expires:

SWORN STATEMENT PURSUANT TO SECTION 287.133(3)(A)
FLORIDA STATUTES, ON PUBLIC ENTITY CRIMES

THIS FORM MUST BE SIGNED AND SWORN TO IN THE PRESENCE OF A NOTARY PUBLIC OR OTHER OFFICIAL AUTHORIZED TO ADMINISTER OATHS,

1. This sworn statement is submitted to the City of Key West
by Dennis J. Giordano, President

(print individual's name and title)

for Calvin, Giordano & Associates, Inc.

(print name of entity submitting sworn statement)

whose business address is

1800 Eller Drive, Suite 600, Fort Lauderdale, Florida 33316

and (if applicable) its Federal Employer Identification Number (FEIN) is

65-0013869 (if the entity has no FEIN, include the Social Security
Number of the individual signing this sworn statement):

2. I understand that a "public entity crime" as defined in Paragraph 287.133(1)(g), Florida Statutes, means a violation of any state or federal law by a person with respect to and directly related to the transaction of business with any public entity or with an agency or political subdivision of any other state or of the United States, including, but not limited to, any bid or contract for goods or services to be provided to any public entity or an agency or political subdivision of any other state or of the United States and involving antitrust, fraud, theft, bribery, collusion, racketeering, conspiracy, or material misrepresentation.
3. I understand that "conviction" as defined in Paragraph 287.133(1)(g), Florida Statutes, means a finding of guilt or a conviction of a public entity crime, with or without an adjudication of guilt, in any federal or state trial court of record relating to charges brought by indictment or information after July 01, 1989, as a result of a jury verdict, nonjury trial, or entry of a plea of guilty or nolo contendere.
4. I understand that an "affiliate" as defined in Paragraph 287.133(1)(a), Florida Statutes, means:
 1. A predecessor or successor of a person convicted of a public entity crime: or
 2. An entity under the control of any natural person who is active in the management of the entity and who has been convicted of a public entity

crime. The term "affiliate" includes those officers, directors, executives, partners, shareholders, employees, members and agent who are active in the management of an affiliate. The ownership by one person of shares constituting a controlling interest in another person, or a pooling of equipment of income among persons when not for fair market value under an arm's length agreement, shall be a prima facie case that one person controls another person. A person who knowingly enters into a joint venture with a person who has been convicted of a public entity crime in Florida during the preceding 36 months shall be considered an affiliate.

5. I understand that a "person" as defined in Paragraph 287.133(1)(e), Florida Statute means any natural person or entity organized under the laws of any state or of the United States with the legal power to enter into a binding contract and which bids or applies to bid on contracts for the provision of goods or services let by a public entity, or which otherwise transacts or applies to transact business with a public entity. The term "person" includes those officers, directors, executives, partners, shareholders, employees, members, and agents who are active in management of an entity.
6. Based on information and belief, the statement which I have marked below is true in relation to the entity submitting this sworn statement (indicate which statement applies).

Neither the entity submitting this sworn statement, or any of its officers, directors, executives, partners, shareholders, employees, members, or agents who are active in the management of the entity, nor any affiliate of the entity has been charged with and convicted of a public entity crime subsequent to July, 1989.

The entity submitting this sworn statement, or one or more of its officers, directors, executives, partners, shareholders, employees, members, or agents who are active in the management of the entity or an affiliate of the entity has been charged with and convicted of a public entity crime subsequent to July 01, 1989.

The entity submitting this sworn statement, or one or more of its officers, directors, executives, partners, shareholders, employees, members, or agents who are active in the management of the entity or an affiliate of the entity has been charged with and convicted of a public entity crime subsequent to July 01, 1989. However, there has been a subsequent proceeding before a Hearing Officer of the State of Florida, Division of Administrative Hearings and the Final Order entered by the Hearing Officer determined that it was not in the public interest to place the entity submitting this sworn statement on the convicted vendor list. (attach a copy of the final order)

I UNDERSTAND THAT THE SUBMISSION OF THIS FORM TO THE CONTRACTING

OFFICER FOR THE PUBLIC ENTITY IDENTIFIED IN PARAGRAPH ONE (1) ABOVE IS FOR THAT PUBLIC ENTITY ONLY AND, THAT THIS FORM IS VALID THROUGH DECEMBER 31 OF THE CALENDAR YEAR IN WHICH IT IS FILED. I ALSO UNDERSTAND THAT I AM REQUIRED TO INFORM THE PUBLIC ENTITY PRIOR TO ENTERING INTO A CONTRACT IN EXCESS OF THE THRESHOLD AMOUNT PROVIDED IN SECTION 287.017, FLORIDA STATUTES, FOR THE CATEGORY TWO OF ANY CHANGE IN THE INFORMATION CONTAINED IN THIS FORM.



(SIGNATURE)

03/31/10

(DATE)

STATE OF Florida
COUNTY OF Broward

PERSONALLY APPEARED BEFORE ME, the undersigned authority
Dennis Giordano who, after first being sworn by me,
(name of individual)
affixed his/her signature in the space provided above on this
31 day of March, 2010


NOTARY PUBLIC

My commission expires:



ADDENDUM NO. ONE

Request for Qualifications
Carrying Capacity Traffic Study


To All Bidders:

The following change is hereby made a part of RFQ 10-009 as fully and as completely as if the same were fully set forth therein:

The City has assembled available traffic and transportation studies on the Planning Department Webpage in an effort to provide background references for the Carrying Capacity Traffic Study RFQ 10-009. Please review the transportation studies prior to submitting your response. The link is as follows:

<http://www.keywestcity.com/egov/apps/services/index.egov?path=details&action=i&id=247>

All Bidders shall acknowledge receipt and acceptance of this Addendum No. 1 by acknowledging Addendum in their proposal or by submitting the addendum with the bid package. Bids submitted without acknowledgement or without this Addendum may be considered non-responsive.



Signature

Calvin, Giordano & Associates, Inc.

Name of Business

ADDENDUM NO. 2

To All Bidders:

The following change is hereby made a part of RFQ 10-009 Carrying Capacity Traffic as fully as completely as if the same were fully set forth therein:

All Requests for Information shall be submitted no later than April 10th, 2010.

All Bidders shall acknowledge receipt and acceptance of this Addendum No. 1 by acknowledging Addendum in their proposal or by submitting the addendum with the bid package. Bids submitted without acknowledgement or without this Addendum may be considered non-responsive.



Signature
Shelley Eichner, AICP, Vice President

Calvin, Giordano & Associates, Inc.

Name of Business

NOTICE OF ADVERTISEMENT – REQUEST FOR QUALIFICATIONS

NOTICE is hereby given to prospective proposers that responses will be received by the CITY of KEY WEST, FLORIDA by the office of the City Clerk, 525 Angela Street, Key West, Florida 33040 until 3:30 p.m. April 16, 2010 for the “Request For Qualifications 10-009 – Carrying Capacity Traffic Study” in the Office of the City Clerk. Any responses received after the time announced will not be considered.

Scope of Services and Response Documents may be obtained from DemandStar by Onvia at www.demandstar.com/supplier or call toll-free at 1-800-711-1712. One (1) original and ten (10) copies of the responses are to be enclosed in two (2) sealed envelopes, one within the other, each clearly marked on the outside: **“Request For Qualifications # 10-009– Carrying Capacity Traffic Study”** the due date, and the respondent’s name, addressed and delivered to:

CITY CLERK, CITY OF KEY WEST, FLORIDA
CITY HALL, 525 ANGELA STREET
KEY WEST, FLORIDA 33040

At the time of the proposal, the successful Responder must show satisfactory documentation of state licenses (if applicable).

Any permit and/or license requirement and subsequent costs are located within the response documents. The successful Responder must also be able to satisfy the City Attorney as to such insurance coverage, and legal requirements as may be demanded by the response in question. The City may reject responses: (1) for budgetary reasons, (2) if the responder misstates or conceals a material fact in its response, (3) if the response does not strictly conform to the law or is non-responsive to the response requirements, (4) if the response is conditional, or (5) if a change of circumstances occurs making the purpose of the response unnecessary, (6) if such rejection is in the best interest of the City. The City may also waive any minor formalities or irregularities in any response.

Sue Snider, Purchasing Agent

We began as M. E. Berry & Associates in 1937 and became Berry & Calvin in 1985. Twelve years later, the transformation was made to Calvin, Giordano & Associates, Inc. (CGA). From the beginning, much of our reputation was built on repeat business with clients from the public and private sectors. Our success is reflected in the quality of work we consistently provide and also in the personal approach we take with each client.

Founded in Hollywood, our main office is now in Fort Lauderdale, within Port Everglades. To better serve our growing client base, we opened a second office in West Palm Beach in 1992. Our Homestead office opened in 2004 and most recently offices opened in Orlando and Fort Pierce. Today our firm employs nearly 200 professionals who provide a broad range of services including:

- Engineering
- Construction Engineering & Inspection
- Municipal Engineering
- Transportation Planning & Traffic Engineering
- Survey & Mapping
- Planning
- Landscape Architecture & Environmental Services
- Construction Services
- Indoor Air Quality
- Data Technologies & Development
- Emergency Management
- Building Code Services
- Utility & Community Maintenance Services



Calvin, Giordano & Associates, Inc.
EXCEPTIONAL SOLUTIONS

1800 Eller Drive, Suite 600, Fort Lauderdale, Florida 33316
Tel: 954.921.7781 • Fax: 954.921.8807 • www.calvin-giordano.com

Fort Lauderdale • West Palm Beach • Orlando • Homestead