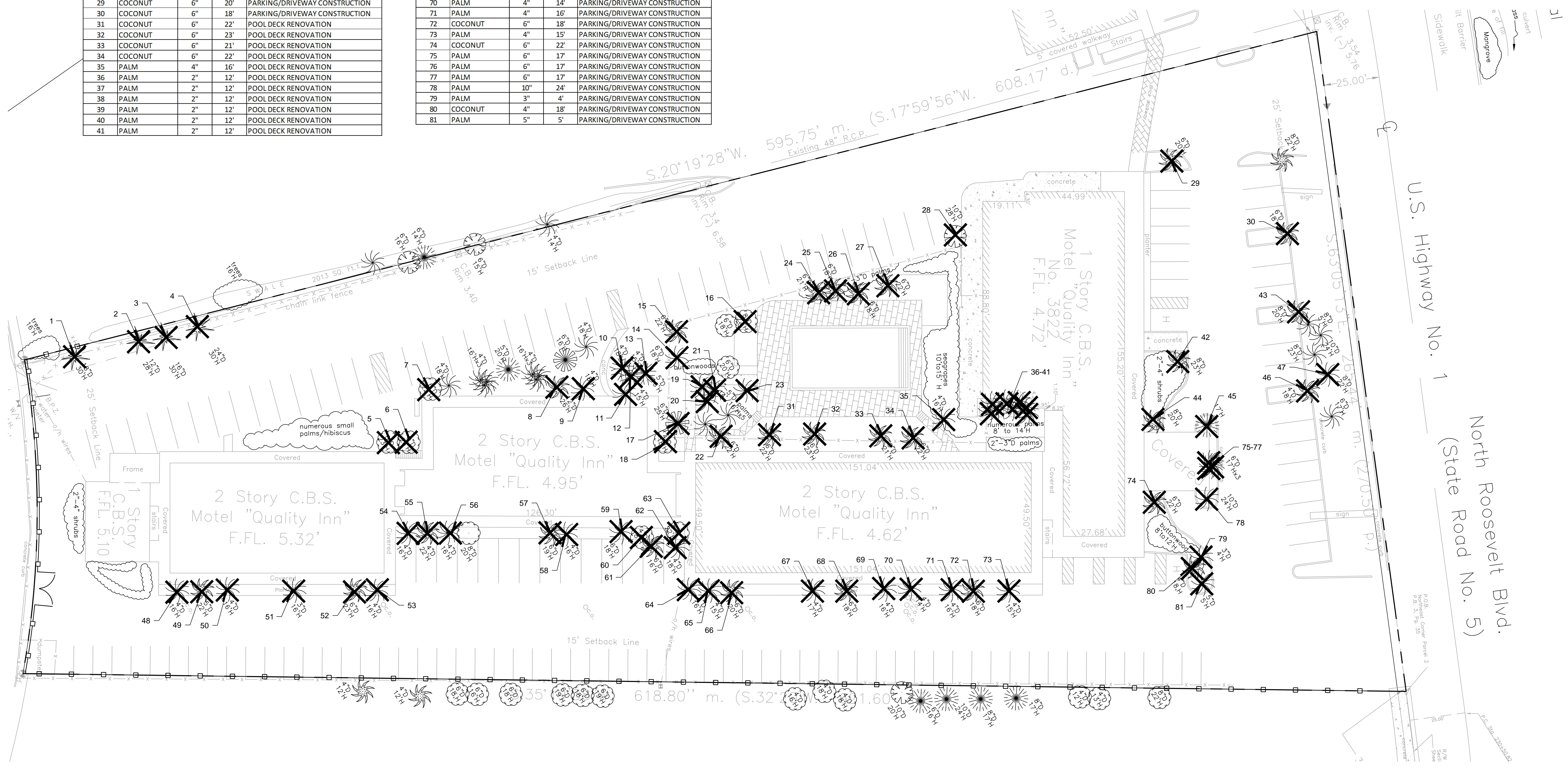


TABLE OF REMOVED TREES

NO.	TYPE	DBH	HEIGHT	REASON REMOVED
1	PINE	18"	30'	NON-NATIVE
2	PINE	12"	28'	NON-NATIVE
3	PINE	16"	30'	NON-NATIVE
4	PINE	24"	30'	NON-NATIVE
5	UMBRELLA	8"	23'	NEW CONSTRUCTION
6	UMBRELLA	8"	26'	NEW CONSTRUCTION
7	UMBRELLA	6"	22'	NEW CONSTRUCTION
8	COCONUT	12"	26'	NEW CONSTRUCTION
9	PALM	4"	18'	NEW CONSTRUCTION
10	FICUS	4"	18'	NEW CONSTRUCTION
11	PALM	4"	15'	NEW CONSTRUCTION
12	PALM	4"	15'	NEW CONSTRUCTION
13	FICUS	5"	16'	NEW CONSTRUCTION
14	PALM	6"	18'	NEW CONSTRUCTION
15	COCONUT	6"	22'	NEW CONSTRUCTION
16	UMBRELLA	8"	22'	NEW CONSTRUCTION
17	BUTTON WOOD	6"	25'	NEW CONSTRUCTION
18	UMBRELLA	4"	18'	NEW CONSTRUCTION
19	PALM	4"	15'	NEW CONSTRUCTION
20	PALM	4"	15'	NEW CONSTRUCTION
21	PALM	4"	15'	NEW CONSTRUCTION
22	COCONUT	6"	22'	NEW CONSTRUCTION
23	PALM	4"	15'	NEW CONSTRUCTION
24	COCONUT	6"	21'	POOL DECK RENOVATION
25	COCONUT	6"	18'	POOL DECK RENOVATION
26	COCONUT	6"	18'	POOL DECK RENOVATION
27	COCONUT	6"	22'	POOL DECK RENOVATION
28	GUMBO LIMBO	10"	28'	NEW CONSTRUCTION
29	COCONUT	6"	20'	PARKING/DRIVEWAY CONSTRUCTION
30	COCONUT	6"	18'	PARKING/DRIVEWAY CONSTRUCTION
31	COCONUT	6"	22'	POOL DECK RENOVATION
32	COCONUT	6"	23'	POOL DECK RENOVATION
33	COCONUT	6"	21'	POOL DECK RENOVATION
34	COCONUT	6"	22'	POOL DECK RENOVATION
35	PALM	4"	16'	POOL DECK RENOVATION
36	PALM	2"	12'	POOL DECK RENOVATION
37	PALM	2"	12'	POOL DECK RENOVATION
38	PALM	2"	12'	POOL DECK RENOVATION
39	PALM	2"	12'	POOL DECK RENOVATION
40	PALM	2"	12'	POOL DECK RENOVATION
41	PALM	2"	12'	POOL DECK RENOVATION

NO.	TYPE	DBH	HEIGHT	REASON REMOVED
42	COCONUT	8"	23'	PARKING/DRIVEWAY CONSTRUCTION
43	COCONUT	8"	20'	PARKING/DRIVEWAY CONSTRUCTION
44	COCONUT	8"	20'	NEW CONSTRUCTION
45	UNKNOWN		17'	NEW CONSTRUCTION
46	COCONUT	4"	18'	PARKING/DRIVEWAY CONSTRUCTION
47	PALM	8"	22'	PARKING/DRIVEWAY CONSTRUCTION
48	PALM	4"	16'	PARKING/DRIVEWAY CONSTRUCTION
49	COCONUT	5"	22'	PARKING/DRIVEWAY CONSTRUCTION
50	PALM	4"	16'	PARKING/DRIVEWAY CONSTRUCTION
51	PALM	3"	16'	PARKING/DRIVEWAY CONSTRUCTION
52	COCONUT	6"	23'	PARKING/DRIVEWAY CONSTRUCTION
53	PALM	4"	16'	PARKING/DRIVEWAY CONSTRUCTION
54	PALM	4"	16'	PARKING/DRIVEWAY CONSTRUCTION
55	COCONUT	4"	22'	PARKING/DRIVEWAY CONSTRUCTION
56	PALM	4"	16'	PARKING/DRIVEWAY CONSTRUCTION
57	COCONUT	6"	19'	PARKING/DRIVEWAY CONSTRUCTION
58	PALM	4"	16'	PARKING/DRIVEWAY CONSTRUCTION
59	PALM	6"	18'	PARKING/DRIVEWAY CONSTRUCTION
60	UMBRELLA	4"	8'	PARKING/DRIVEWAY CONSTRUCTION
61	COCONUT	6"	16'	PARKING/DRIVEWAY CONSTRUCTION
62	PALM	4"	18'	PARKING/DRIVEWAY CONSTRUCTION
63	UMBRELLA	8"	22'	PARKING/DRIVEWAY CONSTRUCTION
64	PALM	4"	16'	PARKING/DRIVEWAY CONSTRUCTION
65	PALM	4"	15'	PARKING/DRIVEWAY CONSTRUCTION
66	COCONUT	6"	20'	PARKING/DRIVEWAY CONSTRUCTION
67	PALM	4"	17'	PARKING/DRIVEWAY CONSTRUCTION
68	COCONUT	6"	18'	PARKING/DRIVEWAY CONSTRUCTION
69	PALM	4"	16'	PARKING/DRIVEWAY CONSTRUCTION
70	PALM	4"	14'	PARKING/DRIVEWAY CONSTRUCTION
71	PALM	4"	16'	PARKING/DRIVEWAY CONSTRUCTION
72	COCONUT	6"	18'	PARKING/DRIVEWAY CONSTRUCTION
73	PALM	4"	15'	PARKING/DRIVEWAY CONSTRUCTION
74	COCONUT	6"	22'	PARKING/DRIVEWAY CONSTRUCTION
75	PALM	6"	17'	PARKING/DRIVEWAY CONSTRUCTION
76	PALM	6"	17'	PARKING/DRIVEWAY CONSTRUCTION
77	PALM	6"	17'	PARKING/DRIVEWAY CONSTRUCTION
78	PALM	10"	24'	PARKING/DRIVEWAY CONSTRUCTION
79	PALM	3"	4'	PARKING/DRIVEWAY CONSTRUCTION
80	COCONUT	4"	18'	PARKING/DRIVEWAY CONSTRUCTION
81	PALM	5"	5'	PARKING/DRIVEWAY CONSTRUCTION



SCOPE DOCUMENTS

The Construction Documents have not been completed therefore this drawing may be incomplete or not coordinated. The documents issued indicate the general scope of the Project. The Contractor is responsible for complete and coordinated pricing and Work, and shall include all items necessary for the proper execution and completion of the Project, whether indicated or not. All components of the Project shall comply with any and all requirements of national, state, and local codes. The Contractor shall inform the Owner and Architect of any omissions, inconsistencies or errors in the information provided. If no notice is given and any omissions, inconsistencies or errors are discovered, the Architect's decisions on items of Work included in the scope shall be binding on the Contractor, when consistent with the general scope and quality of the Project.

ISSUANCES		
No.	Drawing Issue Description	Date
1	SCHEMATIC DESIGN	12/17/2012
2	DESIGN DEVELOPMENT	04/25/2013
3	100% CDS	05/25/2013

KEY WEST HOTEL COLLECTION UNBRANDED (SITE C)

3824 North Roosevelt Boulevard
Key West, Florida 33040

J.L. Woode Ltd.

EXISTING SITE PLAN

BOB NEAL	20120295
MANNY DOMINGUEZ	05/08/13
ANDRES RUBIO	
T. JACK BAGBY	
GARY WARNER	



PROJECT NUMBER: 20120295 PROJECT NAME: KEY WEST HOTEL COLLECTION - HAMPTON INN & SUITES - (SITE C)
SHEET NUMBER: A2.01 - COMPOSITE FLOOR PLANS
DATE: 12/20/2012 9:14:36 AM
DRAWING NUMBER: 7 drawings 6/7-1 rev/users/20120295_2011_hampton_peter.rvt