

## Technical Preservation Services

National Park Service  
U.S. Department of the Interior



[Home](#) > [The Standards](#) > [Applying Rehabilitation Standards](#) > [Successful Rehabilitations](#) > Window Documentation

## Planning Successful Rehabilitation Projects

### [Acquired Significance and Standard 4](#)

### [Continued Historic Use and Standard 1](#)

#### Windows

### [Evaluating Historic Windows for Repair or Replacement](#)

### [Replacement Windows that Meet the Standards](#)

Documentation Requirements for Proposed Window Replacement

#### Interior treatments

### [Identifying Primary and Secondary Interior Spaces in Historic Buildings](#)

### [Changing Secondary Interior Spaces in Historic Buildings](#)

### [Historically-Finished Secondary Spaces—Avoiding Problematic Treatments at Project Completion](#)

### [Subdividing Assembly Spaces in Historic Buildings](#)

### [Retaining Corridors and Other Circulation Spaces in Historic Buildings](#)

### [Interior Spaces, Features, and Materials in Highly Deteriorated Condition and Standard 2](#)

#### New additions and related new construction

### [New Additions to Historic Buildings](#)

### [New Construction within the Boundaries of Historic Properties](#)

#### Modern requirements and new technologies and materials

### [Codes and Regulatory Requirements for Rehabilitating Historic Buildings](#)

### [Energy Efficiency, Sustainability, and Green Building Practices in Historic Buildings](#)

### [Evaluating Substitute Materials in Historic Buildings](#)

## Documentation Requirements for Proposed Window Replacement

Property owners are encouraged to repair and retain existing historic windows. Yet, there are projects where replacement of the existing windows is an appropriate treatment. In order to review proposed replacement windows for conformance with the [Secretary of the Interior's Standards for Rehabilitation](#), the State Historic Preservation Office and the National Park need the following minimum documentation:

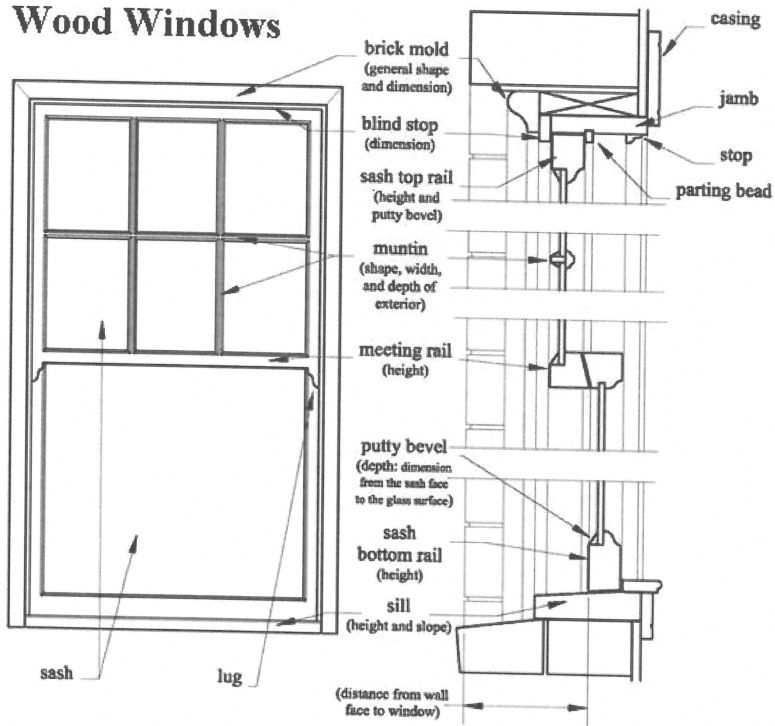
- Clear photographs of existing windows. When windows are boarded over, remove boards from typical windows in order to take photographs.
- Drawings showing the elevation and horizontal and vertical sections of existing historic windows. Include muntins, mullions, transoms, and other window components. For historic steel industrial windows that contain operable units, drawings must include this feature.
- Drawings showing the elevation and horizontal and vertical sections of proposed replacement windows. In the case of a hung window, provide section drawings of both the upper and lower sash, including meeting rail. For replacement steel windows, include sections of both operable and fixed units. See note below regarding manufacturers' standard cut sheets.

Drawings should be at the same scale and large enough to clearly show construction details. Scale should be provided, measurements noted, and materials indicated for the main components of the window. Drawings of the existing historic window should be accurate, based on field measurements. See examples of drawings for wood and industrial steel windows below. [Download the drawings for easy reference.](#)

Replacement windows must accurately replicate the appearance of existing historic windows. Manufacturers' standard cut sheets usually are not an adequate substitute for detailed drawings since they are not drawn specifically for the proposed window replacement and do not show custom applications or installation details required for the project. In small projects where windows are being replaced and the historic or existing window is simple in design, manufacturers' standard cut sheets may be substituted for actual section drawings of the proposed window provided there is sufficient detail for review.

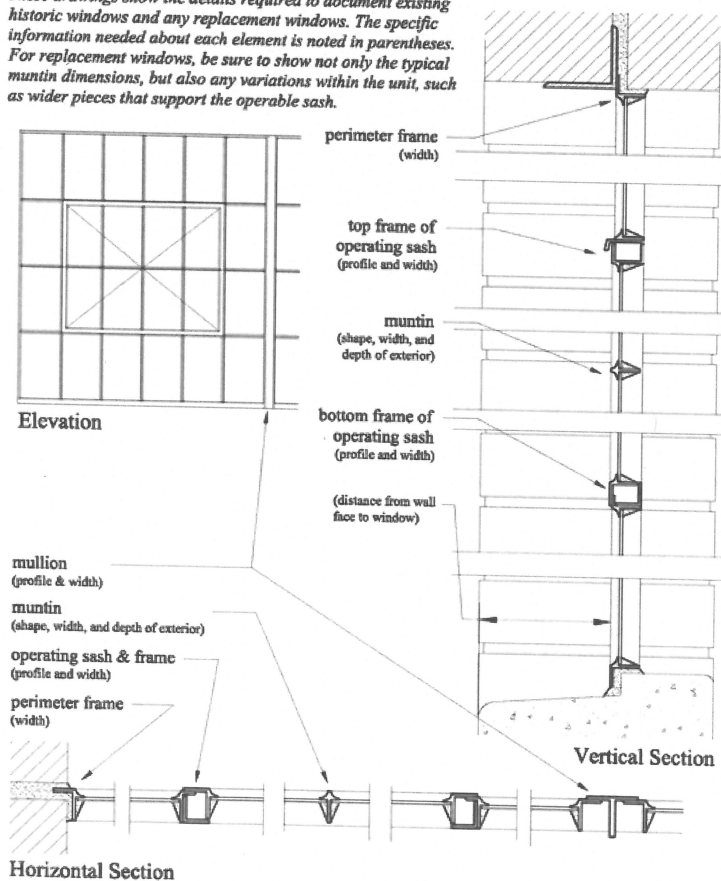
Window sections must show the profiles of muntins, meeting rails, sash, frames, moldings, and other features. Construction details must be apparent, including joinery. For all projects, the window's relationship to the existing wall plane must also be provided for both the existing historic windows, when present, and the proposed replacement window.

## Wood Windows



## Industrial Steel Windows

*These drawings show the details required to document existing historic windows and any replacement windows. The specific information needed about each element is noted in parentheses. For replacement windows, be sure to show not only the typical muntin dimensions, but also any variations within the unit, such as wider pieces that support the operable sash.*





EXPERIENCE YOUR AMERICA™