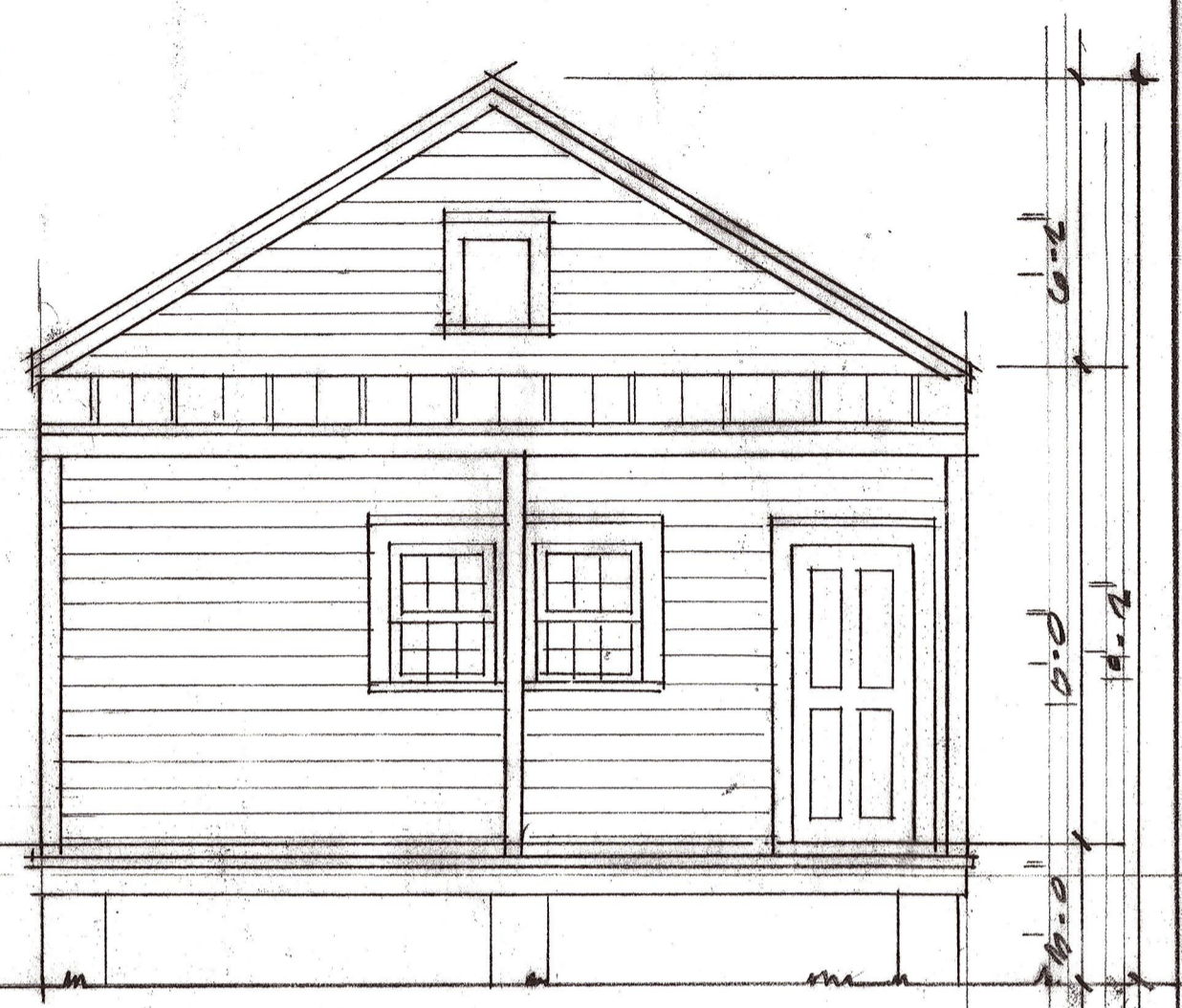


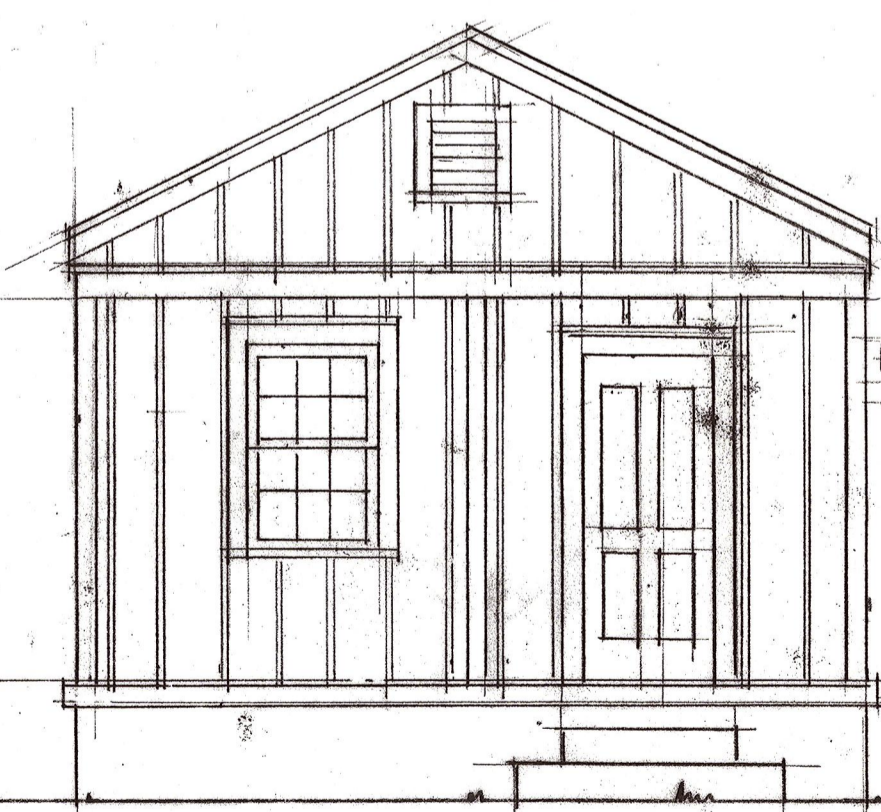
118 VIRGINIA ST
14'-0"



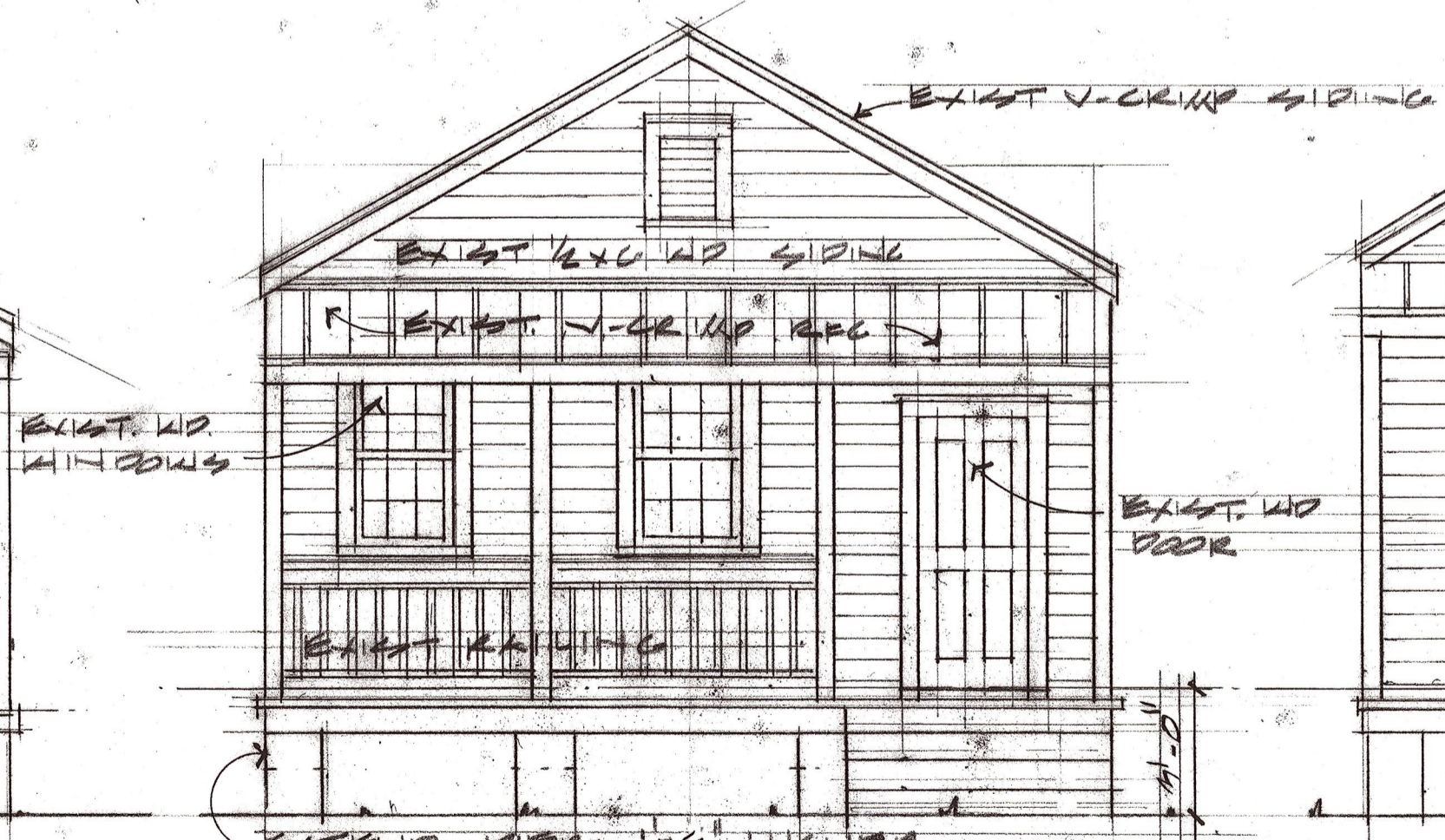
116 VIRGINIA ST
14'-0"



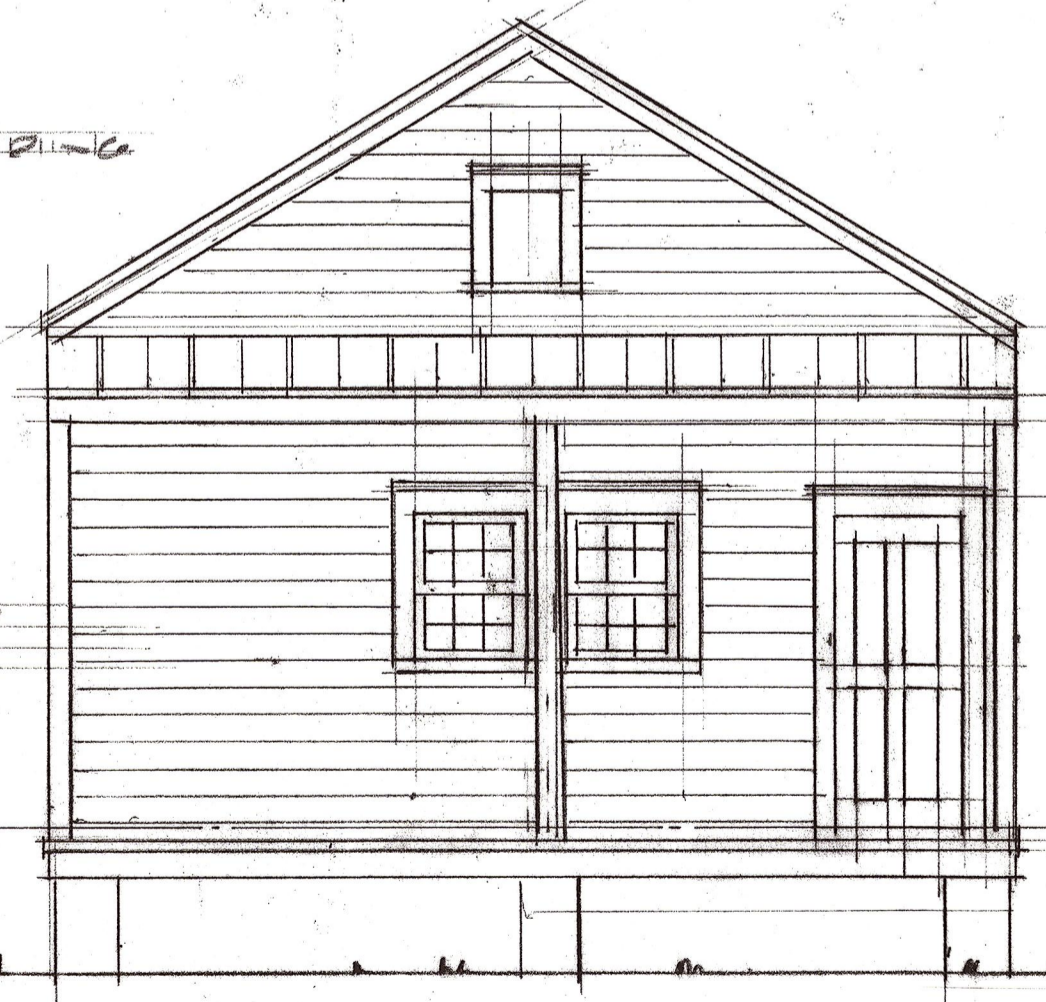
114 VIRGINIA ST
14'-0"



110 VIRGINIA ST
14'-0"



106 VIRGINIA ST
14'-0"



104 VIRGINIA ST
14'-0"

A. SCOLLARD
ARCHITECT
KEY WEST FL

9-10-2

118 VIRGINIA ST
116 VIRGINIA ST
114 VIRGINIA ST
110 VIRGINIA ST
106 VIRGINIA ST
104 VIRGINIA ST

9-10-2
9-10-2

19.0
15.6