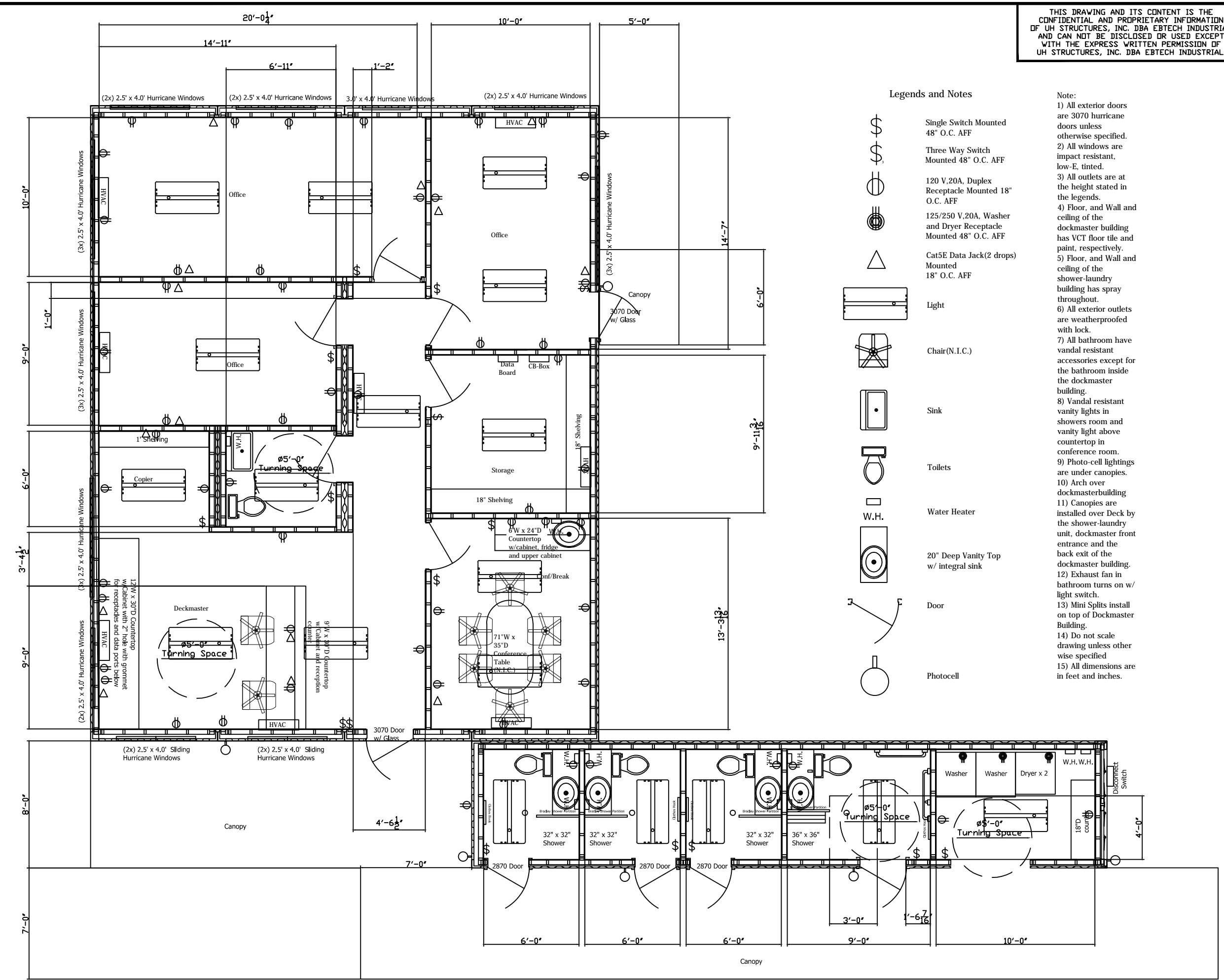


THIS DRAWING AND ITS CONTENT IS THE CONFIDENTIAL AND PROPRIETARY INFORMATION OF UH STRUCTURES, INC. DBA EBTECH INDUSTRIAL AND CAN NOT BE DISCLOSED OR USED EXCEPT WITH THE EXPRESS WRITTEN PERMISSION OF UH STRUCTURES, INC. DBA EBTECH INDUSTRIAL.



Legends and Notes

- Single Switch Mounted 48" O.C. AFF
- Three Way Switch Mounted 48" O.C. AFF
- 120 V.20A Duplex Receptacle Mounted 18" O.C. AFF
- 125/250 V.20A Washer and Dryer Receptacle Mounted 48" O.C. AFF
- Cat5E Data Jack(2 drops) Mounted 18" O.C. AFF
- Light
- Chair(N.I.C.)
- Sink
- Toilets
- Water Heater
- 20" Deep Vanity Top w/ integral sink
- Door
- Photocell

- Note:**
- 1) All exterior doors are 3070 hurricane doors unless otherwise specified.
 - 2) All windows are impact resistant, low-E, tinted.
 - 3) All outlets are at the height stated in the legends.
 - 4) Floor, and Wall and ceiling of the dockmaster building has VCT floor tile and paint, respectively.
 - 5) Floor, and Wall and ceiling of the shower-laundry building has spray throughout.
 - 6) All exterior outlets are weatherproofed with lock.
 - 7) All bathroom have vandal resistant accessories except for the bathroom inside the dockmaster building.
 - 8) Vandal resistant vanity lights in showers room and vanity light above countertop in conference room.
 - 9) Photo-cell lightings are under canopies.
 - 10) Arch over dockmasterbuilding
 - 11) Canopies are installed over Deck by the shower-laundry unit, dockmaster front entrance and the back exit of the dockmaster building.
 - 12) Exhaust fan in bathroom turns on w/ light switch.
 - 13) Mini Splits install on top of Dockmaster Building.
 - 14) Do not scale drawing unless otherwise specified
 - 15) All dimensions are in feet and inches.

Dock Master		Port and Marine Services		Key West, FL		Plan View	
DIMENSIONS	55' x 64' x 14'	Rev	H	SYSTEM / PANEL	Conex		
INTERIOR COLOR	TBD	EXTERIOR COLOR	TBD	POST DOOR COLOR	TBD		
P.O. NUMBER	-	CONTACT	Karen Olson	LEAD TIME AFTER APPROVAL	18 weeks		
ORDER DATE	-	DATE DRAWN	03-17-2015	SCALE	NTS		
ORDER OR QUOTE #	18131-2	SALESPERSON	JN	DRAWN BY	JN		
EBTECH INDUSTRIAL		Connellsville, PA		FAX (412) 774-2429			
SHEET		1		OF 1			