

In-Car Digital Video Recording System

EDGE



CAMERA FEATURES

- Up to 6 Cameras
- 18X Optical Zoom, 12X Digital Zoom
- 0.7 Lux at 60 fps
- Night Mode 0.01 Lux w/ Infrared
- 48° Viewing Angle; Optional 68° Wide Angle Lens

MICROPHONE FEATURES

- 900 MHz for least interference
- Clear up to 1000'
- Up to 10 Hours Talk Time
- Multichannel w/ Automatic Synchronization
- Rechargeable Li-Ion Battery
- 14-Day Standby Time

MONITOR FEATURES

- Sunlight Readable LED Monitor
- Glove Friendly Touchscreen
- Anti-Glare

HARD DRIVE OPTIONS

- Tested and Certified to Mil-Spec 810G
- Three Year Hardware Warranty
- Proven Reliability and Durability

5.7" Touchscreen Monitor. User-friendly interface designed for easy operation. Easily tag videos with the correct ID and enter data after a stop.

H.264 Video Format. Recording video in the most up-to-date industry H.264 standard means your video is the most portable.

Hands-Free System Updates. Use wireless download (or removable hard drive) to update software or change system settings. Reduce the chance of human error and eliminate downtime during updates.

Smart Power Module. Sophisticated logic and built-in, uninterrupted power supply (UPS) regulate vehicle voltage and protect the vehicle battery and the system's own power supply.

Near-Zero Lux Night Mode. Provides clear details for recording video in low light when recording in IR mode.

Wireless Capabilities (802.11 a/g/n and optional WiMax). Multiple standards provide flexibility for uploading and wireless updates.

Video Streaming Enabled. No additional hardware necessary. (Requires 3G/4G connection and proper bandwidth.)

Fail-Safe Recording. The highest availability of video evidence out there: dual stream, fail-safe recording. Video is captured twice onto two independent media. We've got your back.

Instant Replay. Travel back in time. This patent-pending feature constantly records in background to provide unlimited pre-events. Easily locate an earlier point and make a new video clip.

Removable Solid-State Hard Drive offers a long life cycle and fast read/write speeds. Reliable and fastest method of video upload; also a great choice when wireless upload is unavailable.

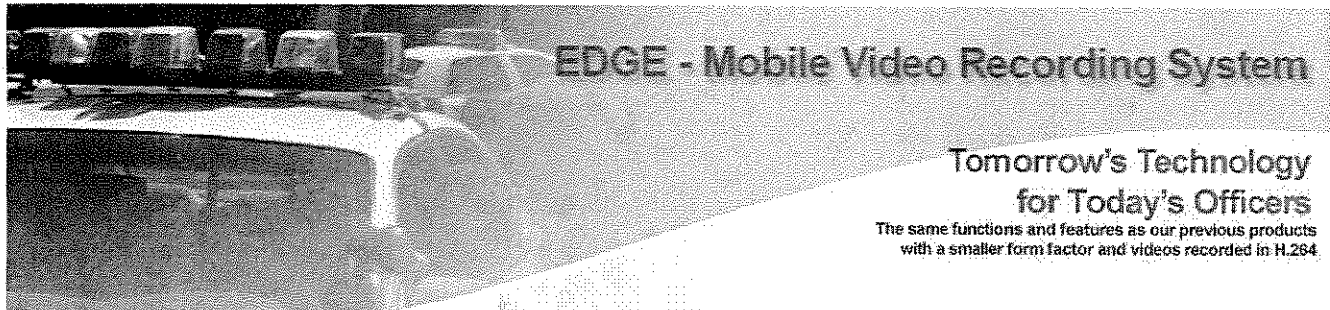
Rugged 900 MHz, Bidirectional, Water-Resistant Mics. Clear up to 1000 feet, talk time up to 10 hours. Two agency-defined, programmable buttons offer multiple functions.

ALPR-Ready (Automatic License Plate Recognition). Including ALPR as part of the system turns EDGE into a highly cost-effective combination video-ALPR system. See the *Vision-ALPR* brochure for more information.

COBAN Technologies

For information please call 281.925.0488 or www.cobantech.com

V10.11


[Home](#) - [Sitemap](#)
[HOME](#)
[PRODUCTS](#)
[MEDIA](#)
[SUPPORT](#)
[CONTACT](#)
[ABOUT](#)


EDGE - Mobile Video Recording System

Tomorrow's Technology for Today's Officers

The same functions and features as our previous products
with a smaller form factor and videos recorded in H.264

Features

System Overview

- **5.7" touchscreen** with user-friendly interface
- 32GB solid-state **internal, fail-safe hard drive** (upgradable to 64GB), more durable and faster than standard CF, SDHC, or P2 cards
- 32GB solid-state ruggedized, **removable hard drive** (upgradable to 64GB)
- **Instant Replay** feature (patent pending): Unlimited pre/post-event recording setting, department definable
- Multiple, **configurable recording triggers** (lightbar, speed, etc.)
- MD5 Hash Algorithm maintains video integrity by producing a **unique digital signature** when videos are created

Video

- Records in industry standard **H.264** video format (D1 at 30 fps)
- Supports up to **six separate cameras**; records simultaneously from up to five
- Records up to **75 hours of 30 fps video**

Camera

- Wide viewing angle
- 18X optical zoom, 12X digital zoom
- IR cut filter for **low light or night mode recording** (0.01 lux in IR mode)

Audio

- Supports up to **three mics**; syncs and records 2 wireless body mics while recording the back seat, as well
- Wireless mic operating range of **up to 1000 feet**
- Talk time up to **10 hours**
- Two **programmable mic buttons** for functions such as bookmark, mute, snapshot, auto-zoom, covert interview, and partner alert

Data Transfer

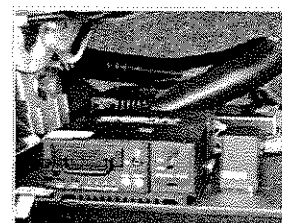
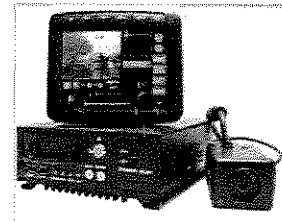
- **Hands-free system updates** via wireless, wired, or removable drive
- **Wireless** upload/download support (802.11 a/g/n and optional WiMax)
- Long life-cycle, **removable solid-state hard drive** with fast read/write speeds
- **Wired** upload/download support via high-speed Gigabit Ethernet for fast video transfer
- **Checkpoint video transfer** allows vehicles to halt a wireless upload and resume transfer from the same point at a later time without data loss

Durable

- Removable, ruggedized, hard drive functions as a backup upload solution if wireless is unavailable
- **Tested to MIL SPEC standards** (MIL STD 810-F) for temperature, shock, and vibration

Images

[Click to Enlarge](#)



Event Data and Meta Data

- **Log event data** such as event type, offender information, ticket number, case number, and more
- Each video can synchronize information such as GPS, radar, and speed

ALPR Ready

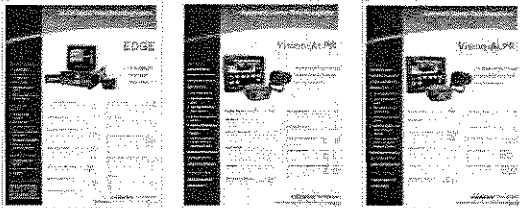
- EDGE-ALPR is a **video plus ALPR system**
- COBAN provides the **most cost-effective video/ALPR systems** in the industry
- See the [Vision-ALPR](#) or [EDGE-ALPR](#) product page for more information

Request More Information

[LEARN MORE](#): Request information about COBAN In-Car Recording Systems directly from one of our sales representatives.

Brochures

Download a brochure about the COBAN EDGE In-Car Recording System, EDGE-ALPR, or Vision-ALPR System.



COBAN Technologies, Inc. © 2010 | [Privacy Policy](#)



Birmingham Police Department

1710 1st Ave. North
Birmingham, AL 35203
Contact: Sgt. Cedric Roberts
cedric.roberts@birminghamal.gov
Phone: 205-410-8233
Customer Since: 2009

Products:

- TITAN M7 VMDT
- VMDT

Horry County Sheriff's Office

2560 Main St.
Conway, SC 29526
Contact: Lt. Jason Freer
freerj@horrycounty.org
Phone: 843-915-7987
Customer Since: 2008

Products:

- Interview Room
- TopCam In Car Video
- Wireless Transfer "G"

Madison Police Department

100 Hughes Road
Madison, AL 35758
Contact: Sgt. Don Monk
don.monk@madisonal.gov
Phone: 256-755-1038
Customer Since: 2006

Products:

- EDGE In Car Video
- Video Mobile Computer

Fort Lauderdale Police Department

1300 West Broward Blvd
Fort Lauderdale, FL
Contact: Craig Richards ~ (I.T.)
crichards@fortlauderdale.gov
Phone: 954-828-6917
Customer Since: 2008

Products:

- TopCam In Car Video
- Wireless Transfer "G"

Key West Police Department

1004 N. Roosevelt Blvd.
Key West, FL 33040
Contact: Lt. James Benkoczy
jbenkocz@keywestcity.com
Phone: (305) 809-1027
Customer Since: 2012

Products:

- Interview Room
- TopCam In Car Video
- Wireless Transfer "N"

Osceola County Sheriff's Office

2601 E. Irlo Bronson Hwy
Kissimmee, FL 34744
Contact: Sgt. Brian Adams
bada@osceola.org
Phone: 407-709-9098
Customer Since: 2012

Products:

- EDGE In Car Video
- Wireless Transfer "N"

Hollywood Police Department

3250 Hollywood Blvd
Hollywood, FL 33021
Contact: Sgt. Jim Barnick
jbarnick@hollywoodfl.org
Phone: 954-967-4388
Customer Since: 2007

Products:

- TopCam In Car Video
- Wireless Transfer "G"

Leon County Sheriff's Office

2825 Municipal Way
Tallahassee, FL 32404
Contact: Wes Brigman (I.T.)
lcsohelp@leoncountyfl.gov
Phone: 850-528-8434
Customer Since: 2007

Products:

- Prisoner Transport Video
- TopCam In Car Video

Palmetto Police Department

1115 10th St West
Palmetto, FL 34221
Contact: Lt. Scott Tyler
Phone: 941-721-2000
styler@palmettopolice.com
Contact: Todd Williams (~IT)
todd@bi-itconsulting.com
Phone: 941-812-2190
Customer Since: 2006

Products:

- EDGE In Car Video
- VMDT



Pinellas County Sheriff's Office

10750 Ulmerton Rd. (State Rd 688)
Largo, FL 33778
Contact: Lt. Richard Nalven
rnalven@pcsonet.com
Phone: 727-582-6110
Customer Since: 2005

Products:

- EDGE In Car Video
- Prisoner Transport Video
- TopCam In Car Video

Savannah Police Department

201 Habersham Street
Savannah, GA 31412
Contact: Damien Hoffman (I.T.)
dhoffman@savannahga.gov
Phone: 912 651-6923
Customer Since: 2010

Products:

- Body Cameras
- EDGE In Car Video
- TITAN M7 MDC
- Wireless Transfer "N"

Tallahassee Police Department

234 E. 7th avenue
Tallahassee, FL 32303
Contact: Amber Daughtry (I.T.)
amber.daughtry@talgov.com
Phone: 850-891-4249
Customer Since: 2006

Products:

- Body Camera
- EDGE In Car Video
- Interview Room
- Motorcycle Video System
- Prisoner Transport Video
- TopCam In Car Video

CONFIDENTIAL