

MEMORANDUM

DATE: February 15, 2024

RE: **638 United Street (#TP2023-0007) addressed as 634, 636, & 638 United Street and 1302 Villa Mill Alley. (Final Landscape Plan Review)**

FROM: Karen DeMaria, City of Key West Urban Forestry Manager

A request was made for Final Landscape Plan approval for the above referenced property, for a development plan project to build 4 residential units.

The project received Conceptual Landscape plan approval with tree removal at the October 16, 2023 Tree Commission meeting (TP2023-00005) to include the removal of (9) young Spanish Lime trees including tree #3, #5, & #6b, (1) Gumbo Limbo (tree #7b), (2) Arborvitae (tree #7a & #8), and (1) Fishtail Palm (tree#6a NPR) to be replaced with a total of 29.1 caliper inches of approved trees from the approved list, to be planted on site and incorporated into the landscape plan. The fishtail palm is not regulated. The Tree Commission also gave approval of the review and a memo into the file for final landscape plan approval by the Urban Forestry Manager if no significant changes occur to the landscape plan during the review process.

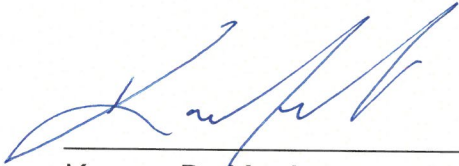
A large, Spanish Lime tree, (1) large Gumbo Limbo, and (1) large Tamarind tree growing along the southwestern property line of the property are to remain and be protected. Information received during the review process indicates a swale planned near the large Spanish Tree behind Unit 4 will need to be reduced or moved and fill is being brought to elevate the property. No excavation of soil or installation of more than 4 inches of fill within 10 ft of the base of the trees is authorized.

A Sec 108 landscaping memorandum was created on December 7, 2023, which identified the need for landscape waivers. The Planning Board approved the development plan with landscape waivers on December 12, 2024. HARC approval of the project was received on January 23, 2024.

No significant changes have been made to the landscape plan since Tree Commission approval therefore, the landscape and irrigation plans dated February 6, 2024, from Keith Oropeza is approved.

CONDITIONS:

1. A tree removal application must be submitted prior to finalization of building permits, for issuance of the tree removal permit.
2. No excavation of soil or installation of more than 4 inches of fill within 10 ft of the base of the trees is authorized. Tree protection must be installed and maintained during the construction process.

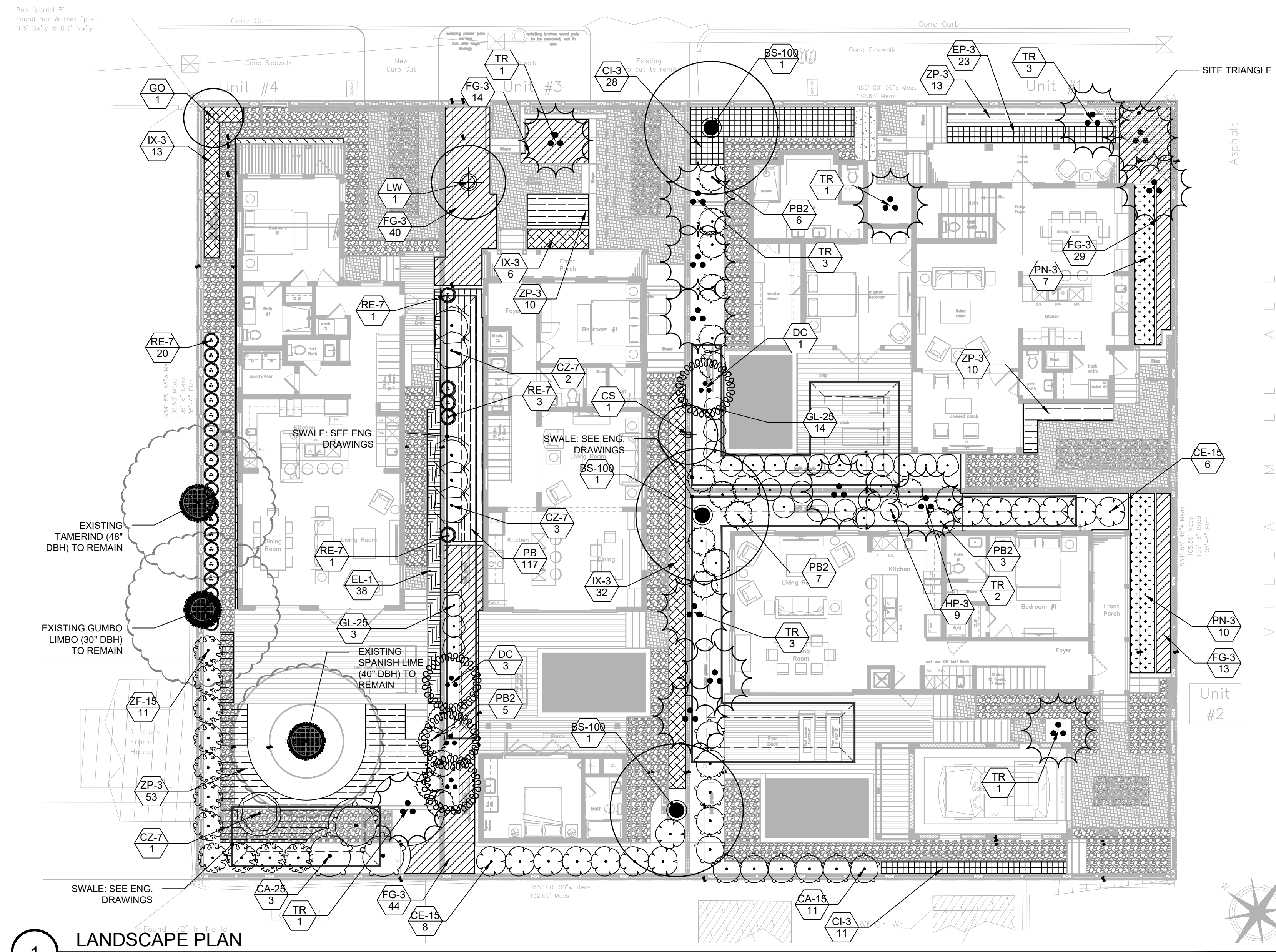


Karen DeMaria
Urban Forestry Manager
305-809-3768
Tree@cityofkeywest-fl.gov

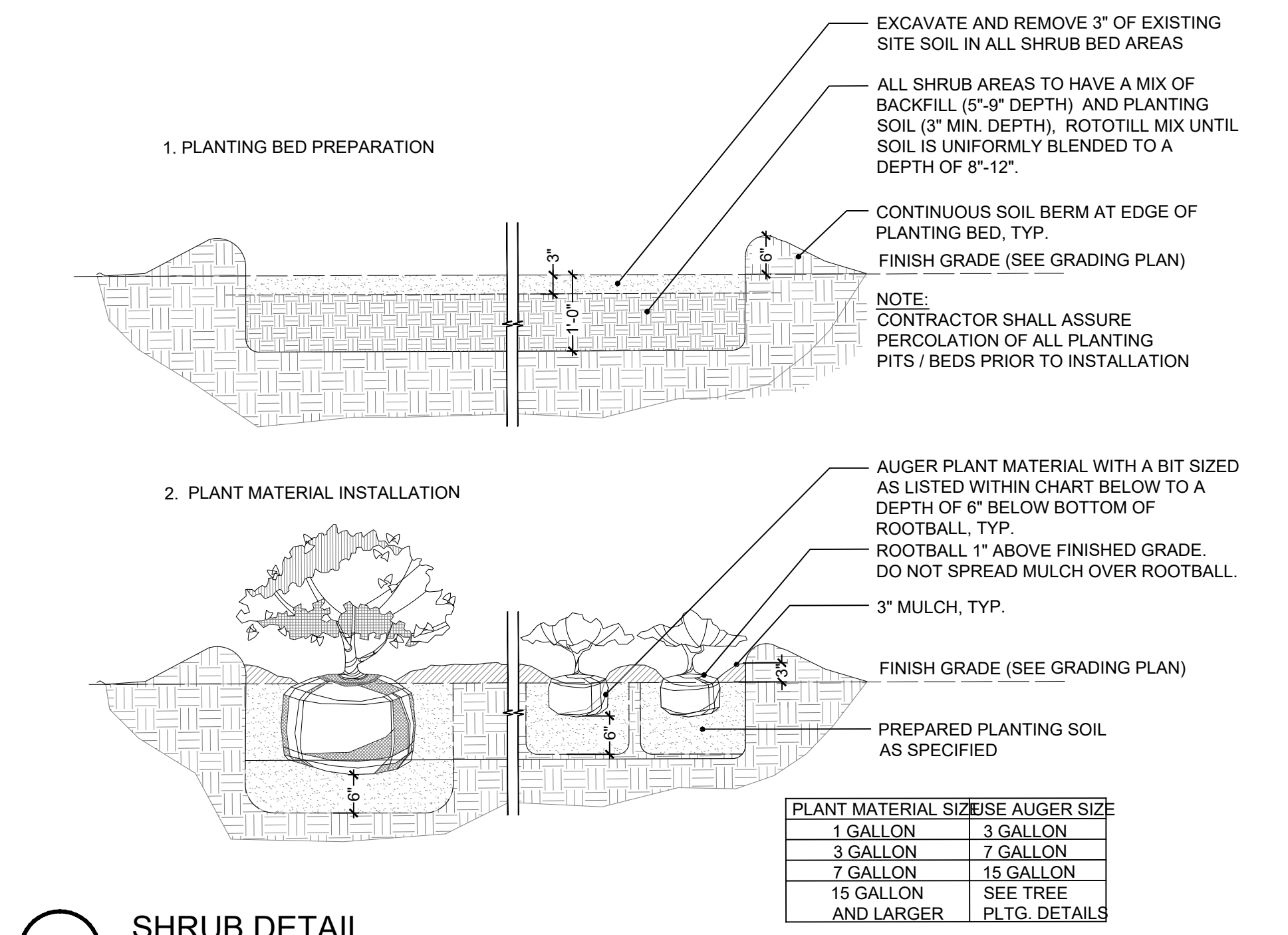
ISSUANCE	DD MMM YY
TREE COMMISSION	23 OCT 23
Permit	06Feb24

PLANT SCHEDULE

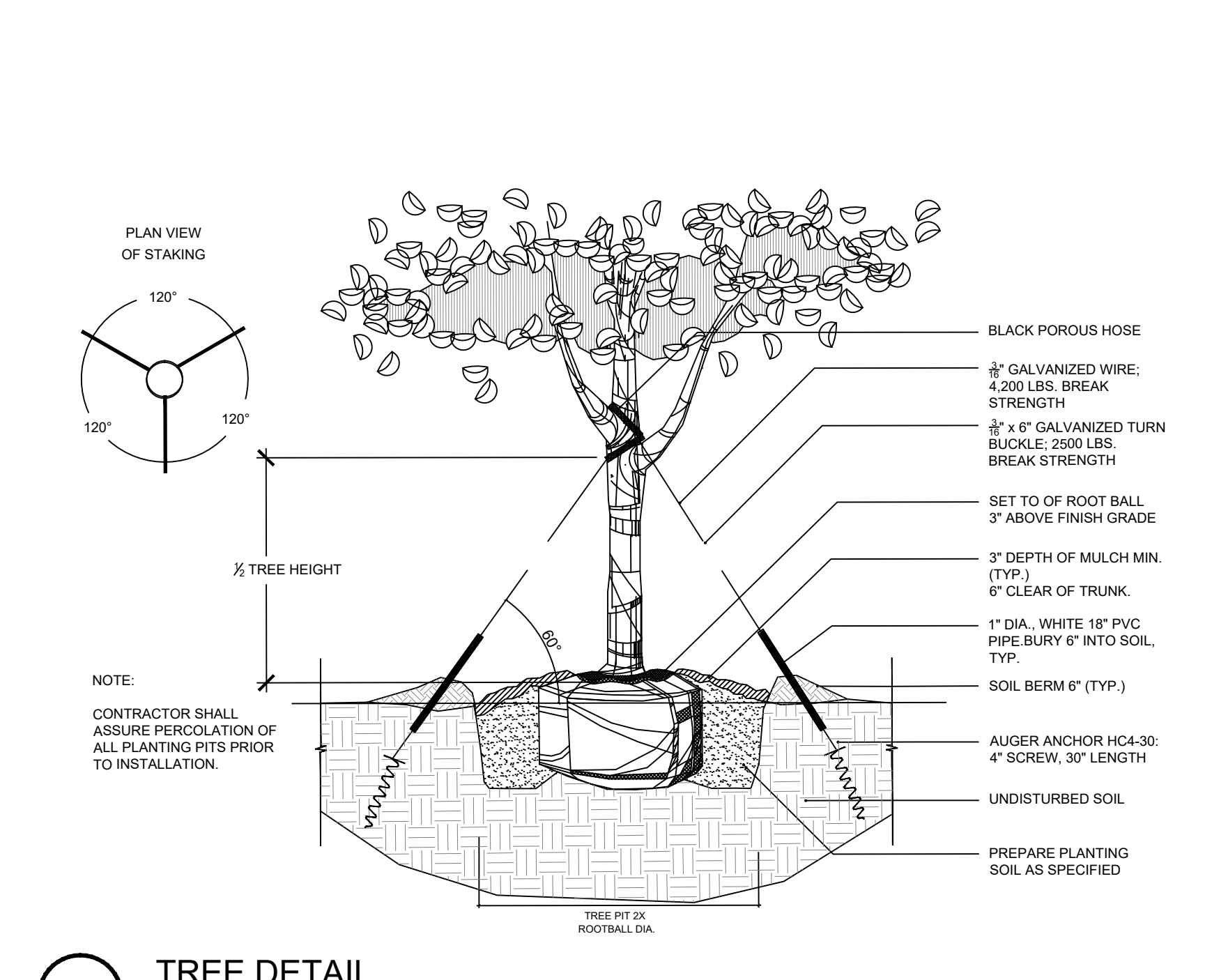
TREES	CODE	QTY	BOTANICAL / COMMON NAME	CONTAINER	SIZE	
	BS-100	3	Bursera simaruba / Gumbo Limbo	100 GAL.	6" CAL. 16' HT X 8' SPRD	
	CS	1	Cordia sebestena / Orange Geiger Tree	F.G.	12' MIN HT. X 6' SPRD., 6' CT.	
	DC	4	Dypsis cabadae / Cabada Palm	45 GAL.	10'-12' HT. X 5'-6' SPRD., 6" C.T., 3" MIN. CAL., SINGLE LEADER	
	GO	1	Guaiacum officinale / Lignum Vitae	F.G.	3" CAL. 12'-14' HT	
	LW	1	Lysiloma latisiliqua / Wild Tamarind	FG	3" CAL. 12'-14' GW	
	TR	15	Thrinax radiata / Florida Thatch Palm	FG	12' OA	
SHRUBS	CODE	QTY	BOTANICAL / COMMON NAME	CONTAINER	SIZE	
	CZ-7	6	Calyptranthes zuziygium / Myrtle of the River	7 GAL.	36" HT MIN	
	CA-15	11	Clusia rosea / Autograph Tree	15 GAL.	4'-5' HT	
	CA-25	3	Clusia rosea / Autograph Tree	25 gal.	8' HT X 3' SPRD	
	CE-15	14	Conocarpus erectus / Silver Buttonwood	15 GAL.	6' HT X 3' SPRD	
	GL-25	17	Gymnanthes lucida / Crabwood	25 gal.	8' HT X 3' SPRD	
	HP-3	9	Hamelia patens / Firebush	3 GAL.	20" OA MIN.	
	PB2	21	Philodendron bipinnatifidum / Cut Leaf Philodendron	3 GAL.	FULL	
	RE-7	25	Rhapis excelsa / Lady Palm	7 GAL.	3' OA	
	ZF-15	11	Zamia furfuracea / Cardboard Palm	15 GAL.	30"-36" OA	
SHRUB AREAS	CODE	QTY	BOTANICAL / COMMON NAME	CONTAINER	SIZE	SPACING
	CI-3	39	Chrysobalanus icaco / Coco Plum	3 GAL.	24" OA. MIN.	24" o.c.
	EL-1	38	Ernodea lottoralis / Golden Creeper	1 GAL.	10"-14" HT. X 5-7 PPP	18" o.c.
	EP-3	23	Exothea paniculata / Inkwood	3 GAL.		18" o.c.
	FG-3	140	Ficus microcarpa 'Green Island' / Green Island Ficus	3 GAL.	18"-24" OA.	24" o.c.
	IX-3	51	Ixora x 'Nora Grant' / Ixora 'Nora Grant	3 GAL.	18"-24" OA.	24" o.c.
	PB	117	Philodendron x 'Burlie Marx' / Burlie Marx Philodendron	1 GAL.	12" SPRD., FULL	12" o.c.
	PN-3	17	Psychotria nervosa / Wild Coffee	3 GAL.		36" o.c.
	ZP-3	91	Zamia pumila / Coontie	3 GAL.	18"-24" OA.	24" o.c.



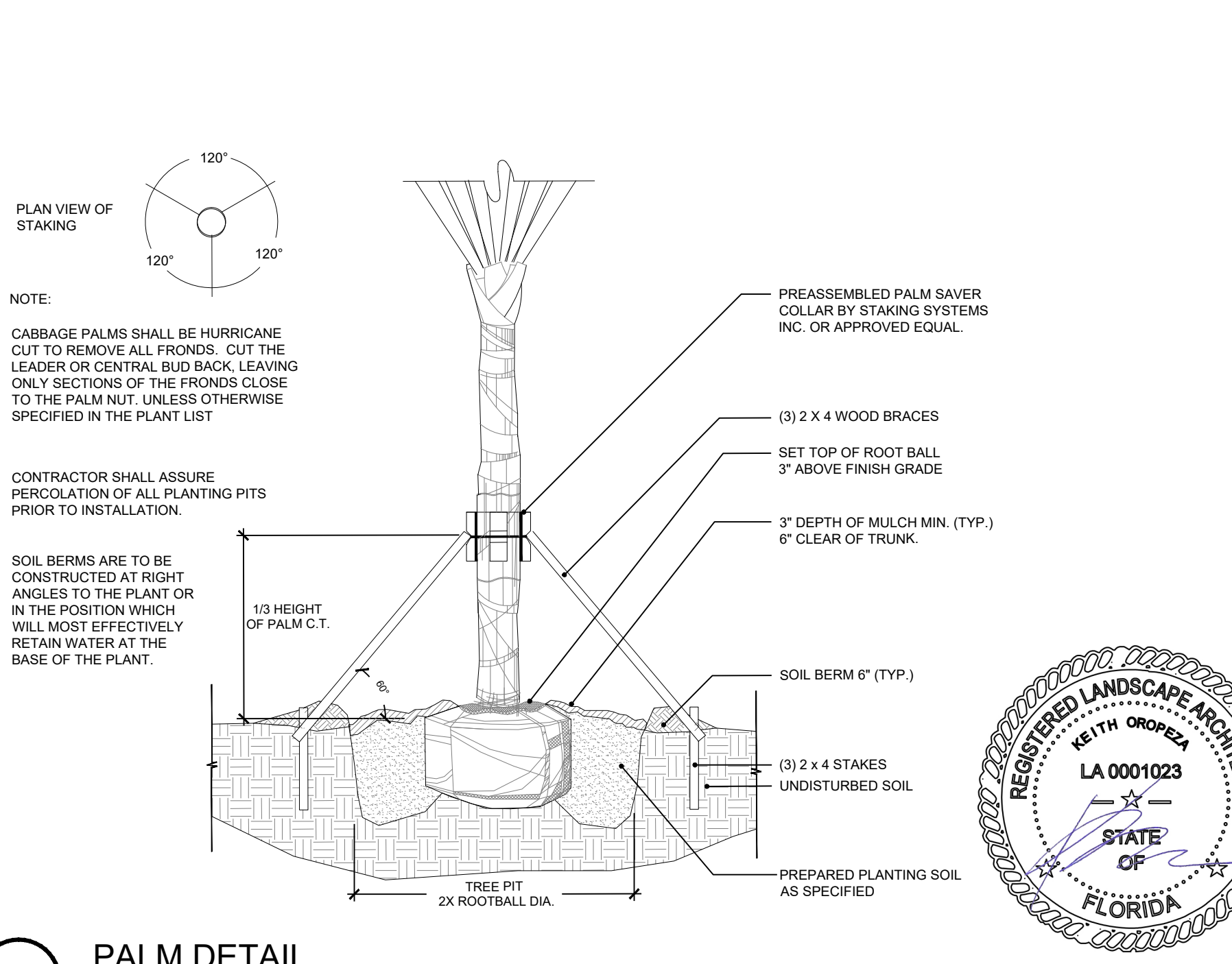
1 LANDSCAPE PLAN
Scale: 1"=10'-0"



2 SHRUB DETAIL
Scale: NTS



3 TREE DETAIL
Scale: NTS



4 PALM DETAIL
Scale: NTS

File Name: C:\Users\MARIA\OneDrive - CA CONSULTANTS, INC\PROJECTS\NEW RESIDENTIAL DEVELOPMENT\LANDSCAPE PLAN AND DETAILS\LD-100.dwg
 User: MARIA OROPEZA
 Date: 10/23/2023 11:03 AM

