

**Previous Approved Plans
September 22, 2009**

CITY OF KEY WEST

ADMINISTRATION BUILDING COMPLEX



Drawing Index

- A0.1.1 - Cover
- A1.1.1 - Architectural Site Plan
- A2.1.1 - 1st Floor Plan Admin Bldg
- A2.1.2 - 2nd Floor Plan Admin Bldg
- A2.1.3 - 1st Floor Plan Parking Garage
- A2.1.5 - 3rd Floor Plan Parking Garage
- A2.3.1 - Admin Bldg Roof Plan
- A3.1.1 - Overall Elevations
- A3.1.2 - Admin Bldg Elevations
- A3.1.3 - Admin Bldg Elevations
- A3.1.4 - Parking Garage Elevations

525 ANGELA STREET, KEY WEST, FLORIDA 33040

HARC SUBMISSION
AUGUST 14, 2009

mbi | k2m
ARCHITECTURE, INC.

1001 Whitehead Street
Key West, Florida 33040
Tel: 305.292.7722
Fax: 305.292.2162
Email: info@mbi-k2m.com
URL: www.mbi-k2m.com
Mr. Michael B. Ingram

SUBMISSIONS

2009.08.14 HARC Submission

KEY WEST ADMINISTRATION
BUILDING COMPLEX

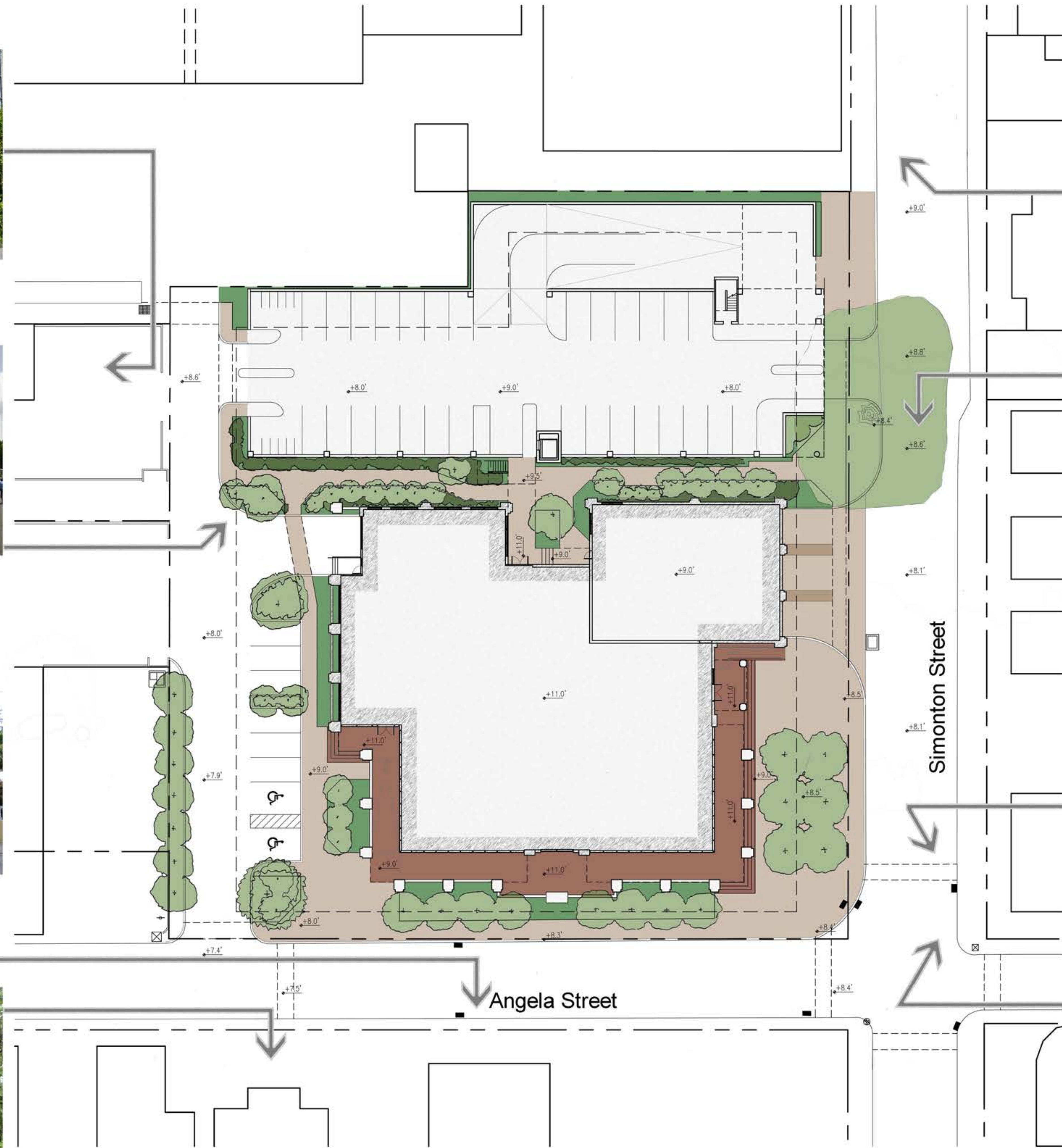
Project No. MK-08021	Phase: Schematic Design
-------------------------	----------------------------

COVER SHEET

A0.1.1

DATE: August 14, 2009

PLOTTED: 8/18/2009 8:37 AM



01 ARCHITECTURAL SITE PLAN
SCALE: 1"=20'-0"

ARCHITECT:
mbi | k2m
ARCHITECTURE, INC.
Architecture, Interior Design,
Procurement,
Owner Representation,
Specialty Consulting
1001 Whitehead St., Unit 101
Key West, Florida 33040
Tel: 305-292-7722
Fax: 305-292-2162
Email: info@mbi-k2m.com
URL: www.mbi-k2m.com

Seal:

Consultants:
STRUCTURAL ENGINEER:
TKW Engineers
CIVIL ENGINEER:
Perez Engineering
MEP / FP ENGINEER:
TLC Engineering
PLANNER:
The Craig Co.
LANDSCAPE ARCHITECT:
Elizabeth Newland

Revisions:



KEY WEST ADMINISTRATION
BUILDING COMPLEX
575 ANGELA STREET
KEY WEST, FL 33040

NOTED: 8/17/2009 8:31 AM
Drawing Size: 24x36 Project #: MK-08021D
Drawn By: ADS Checked By: MBI
Title: ARCHITECTURAL SITE PLAN
Sheet Number: A1.1.1
Date: - AUGUST 14, 2009
©2009 by mbi | k2m Architecture, Inc.

\\101.168.222.222\shared\VC04-Shawn\Jobs\2009\Key-08021-City of Key West\Bldg\Drawings\Arch\A1.1.1_SitePlan.dwg, 8/17/2009 8:31 AM, scale: 1"=20'-0", author: mbi

Seal:

Consultants:

STRUCTURAL ENGINEER:
TKW Engineers

CIVIL ENGINEER:
Perez Engineering

MEP / FP ENGINEER:
TLC Engineering

PLANNER:
The Craig Co.

LANDSCAPE ARCHITECT:
Elizabeth Newland

Revisions:

KEY WEST ADMINISTRATION
BUILDING COMPLEX
575 ANGELA STREET
KEY WEST, FL 33040

NOTED: 8/18/2009 8:38 AM

Drawing Size 24x36	Project #: MK-08021D
Drawn By: WBS	Checked By: MBI

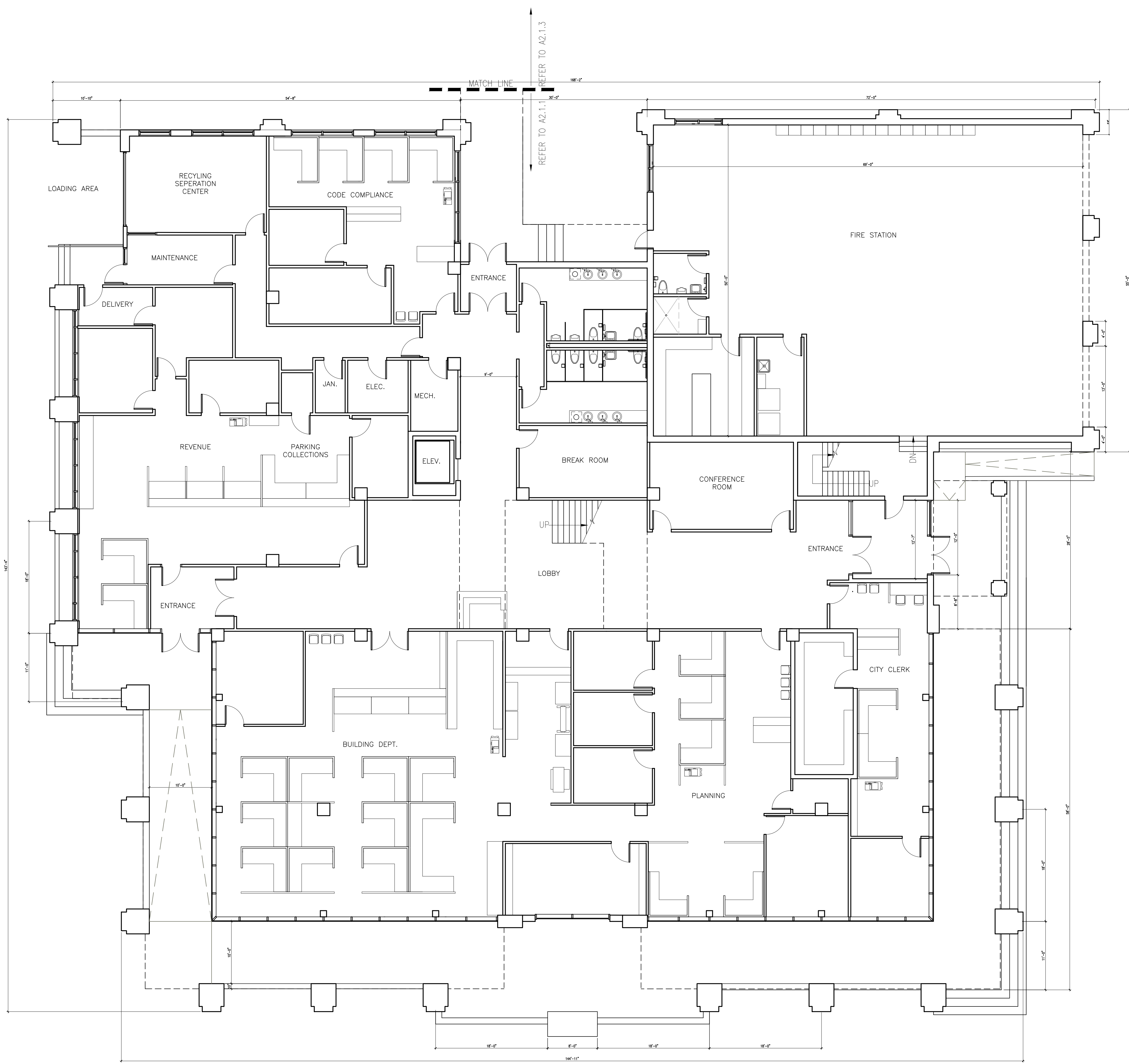
Title:
FIRST FLOOR PLAN

Sheet Number:

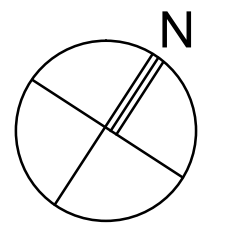
A2.1.1

Date: - AUGUST 14, 2009

1 000000 000000 000000 000000



1
A2.1.1
FIRST FLOOR PLAN
SCALE: 1/8"=1'-0"



Seal:

Consultants:

STRUCTURAL ENGINEER:
TKW Engineers

CIVIL ENGINEER:
Perez Engineering

MEP / FP ENGINEER:
TLC Engineering

PLANNER:
The Craig Co.

LANDSCAPE ARCHITECT:
Elizabeth Newland

Revisions:

**KEY WEST ADMINISTRATION
BUILDING COMPLEX**

575 ANGELA STREET
KEY WEST, FL 33040



NOTED: 8/18/2009 8:39 AM

Drawing Size 24x36	Project #: MK-08021D
Drawn By: WBS	Checked By: MBI

Title:
SECOND FLOOR PLAN

Sheet Number:

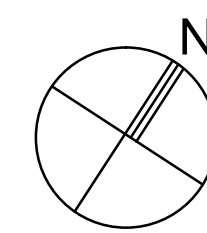
A2.1.2

Date: - AUGUST 14, 2009

1 2 3 4 5 6 7 8 9 10 11 12



1 SECOND FLOOR PLAN
A2.1.2 SCALE: 1/8"=1'-0"



\\Fs11682222\shared\W204-Shawn\Jobs\2009\MK-08021-City of Key Admin Bldg\Drawings\Arch\A2.1.2_A2.1.2.dwg, 8/18/2009 8:39 AM, scale: 1'-0" = 1'-0", author: shawn

Seal:

Consultants:

STRUCTURAL ENGINEER:
TKW Engineers
CIVIL ENGINEER:
Perez Engineering
MEP / FP ENGINEER:
TLC Engineering
PLANNER:
The Craig Co.
LANDSCAPE ARCHITECT:
Elizabeth Newland

Revisions:

NO.	DESCRIPTION	DATE

**KEY WEST ADMINISTRATION
BUILDING COMPLEX**
575 ANGELA STREET
KEY WEST, FL 33040

NOTED: 8/18/2009 9:48 AM

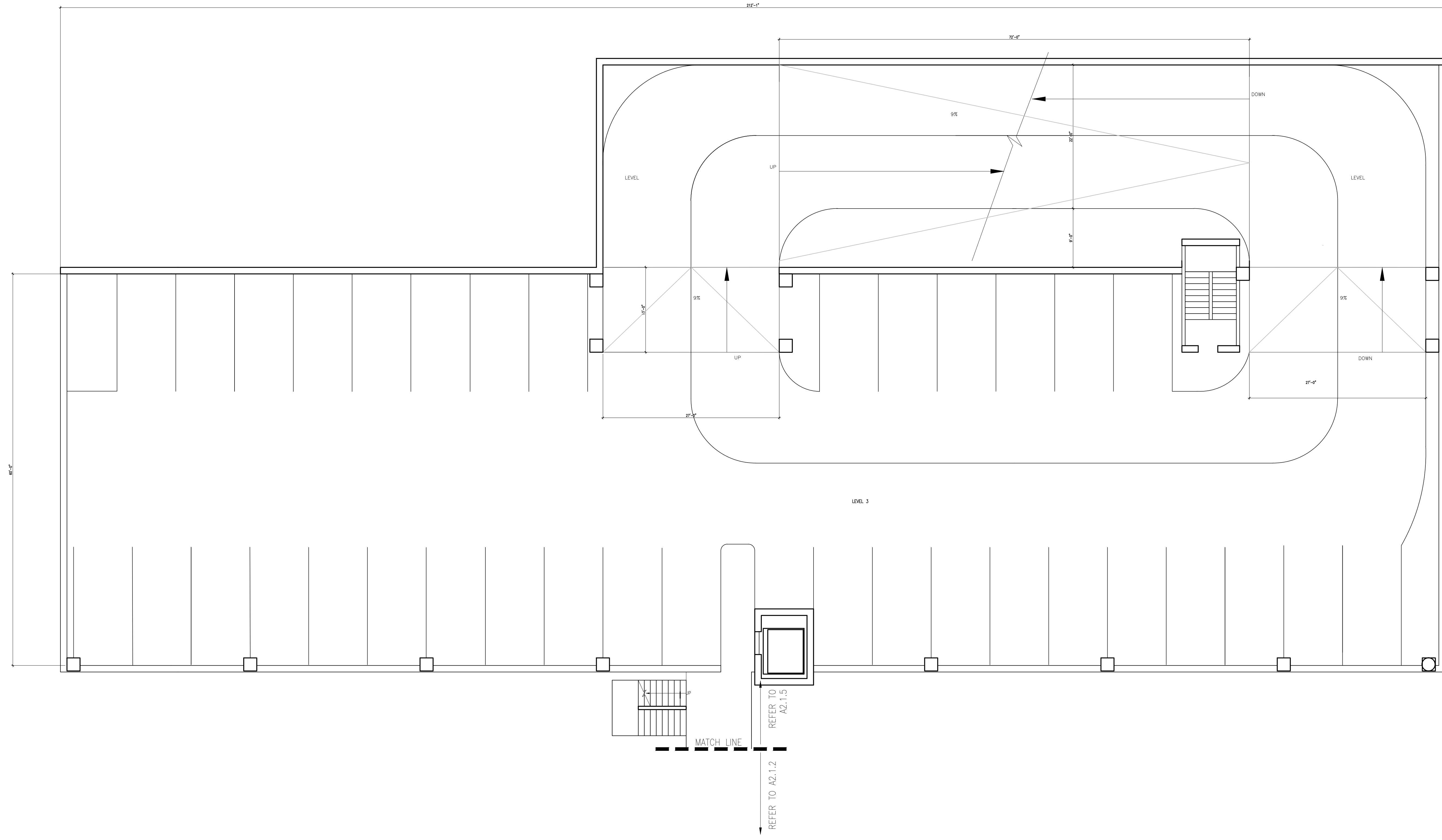
Drawing Size 24x36	Project #: MK-08021D
Drawn By: WBS	Checked By: MBI

Title:
**PARKING GARAGE
THIRD LEVEL PLAN**

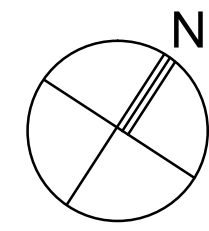
Sheet Number:

A2.1.5

Date: - AUGUST 14, 2009



1
A2.1.5 **THIRD LEVEL PLAN**
SCALE: 1/8"=1'-0"



\\192.168.222.222\share\share\job\2009\mk-08021-City of KW Admin Bldg\Design\Arch\A2.1.5_21436.dwg, 8/18/2009 9:48 AM, scale: 1'-0" = 1'-0", author: wmo

Seal:

Consultants:

STRUCTURAL ENGINEER:
TKW Engineers

CIVIL ENGINEER:
Perez Engineering

MEP / FP ENGINEER:
TLC Engineering

PLANNER:
The Craig Co.

LANDSCAPE ARCHITECT:
Elizabeth Newland

Revisions:

No.	Description

**KEY WEST ADMINISTRATION
BUILDING COMPLEX**
 5/5 ANGELA STREET
 KEY WEST, FL 33040

NOTED: 8/18/2009 8:37 AM

Drawing Size 24x36	Project #: MK-08021D
Drawn By: ADS	Checked By: MBI

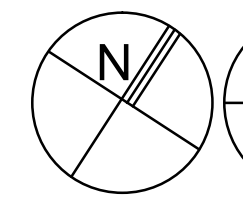
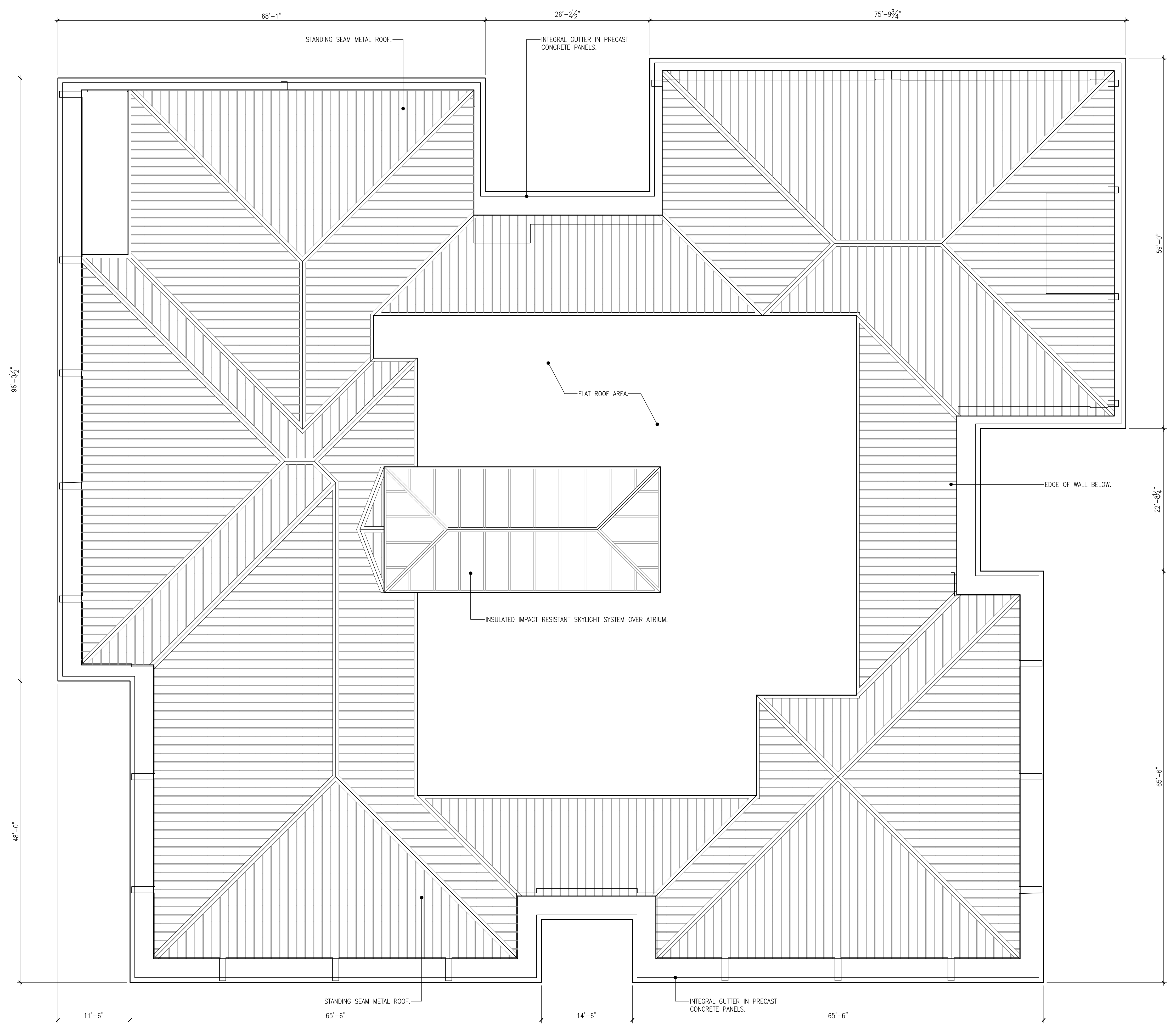
Title:
**ADMINISTRATION
BUILDING
ROOF
PLAN**

Sheet Number:

A2.3.1

Date: - AUGUST 14, 2009

1 000000 00 000000 00 000000 00 000000 00 000000 00 000000



01
A2.3.1

ADMINISTRATION BUILDING ROOF PLAN

SCALE: 1/8"=1'-0"

\\161.188.222.222\jshen\Share\Jobs\2009\MK-08021\City of KW Admin Bldg\Drawings\Arch\A2.3.1_A2.3.1.dwg, 8/19/2009 8:37 AM, scale: 1'-0" = 1'-0", author: jshen

Seal:

Consultants:

STRUCTURAL ENGINEER:
TKW Engineers
CIVIL ENGINEER:
Perez Engineering
MEP / FP ENGINEER:
TLC Engineering
PLANNER:
The Craig Co.
LANDSCAPE ARCHITECT:
Elizabeth Newland

Revisions:

Table with 2 columns for revision number and description.

KEY WEST ADMINISTRATION
BUILDING COMPLEX
575 ANGELA STREET
KEY WEST, FL 33040

NOTED: 8/18/2009 8:24 AM

Table with 2 columns: Drawing Size (24x36) and Project # (MK-08021D); Drawn By (ADS) and Checked By (MBI).

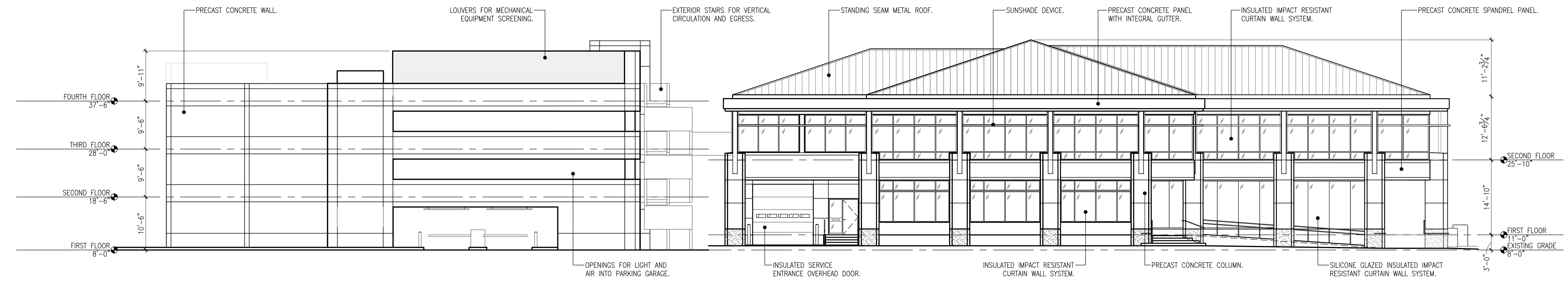
Title: OVERALL EXTERIOR ELEVATIONS

Sheet Number:

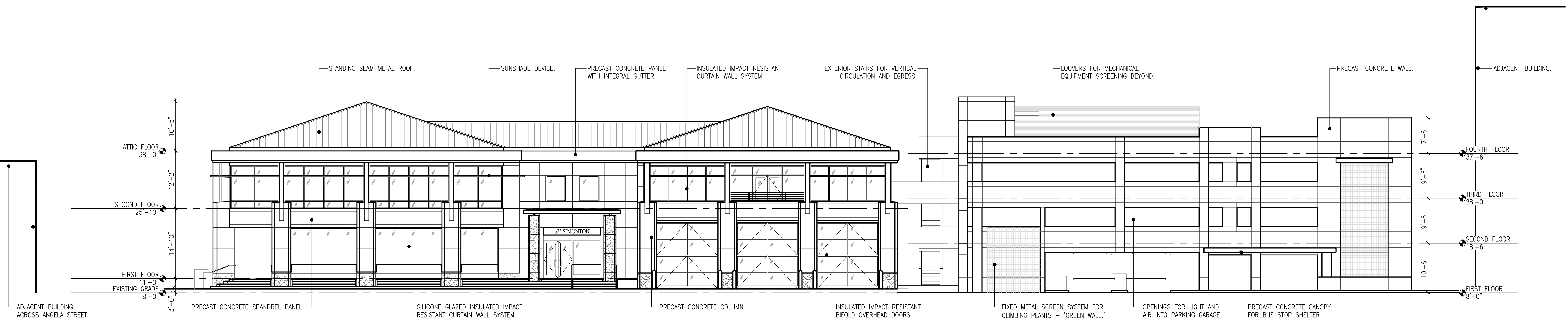
A3.1.1

Date: - AUGUST 14, 2009

1 0 2 3 4 5 6 7 8 9 10 11 12



02 WEST ELEVATION - OVERALL
A3.1.1 SCALE: 3/32"=1'-0"



01 EAST ELEVATION - OVERALL
A3.1.1 SCALE: 3/32"=1'-0"

\\192.168.222.222\jshen\Share\Arch\A3.1.1_24x36.dwg, 8/19/2009 8:24 AM, scale: 1'-0" = 1'-0", author: jshen

Seal:

Consultants:

STRUCTURAL ENGINEER:
TKW Engineers

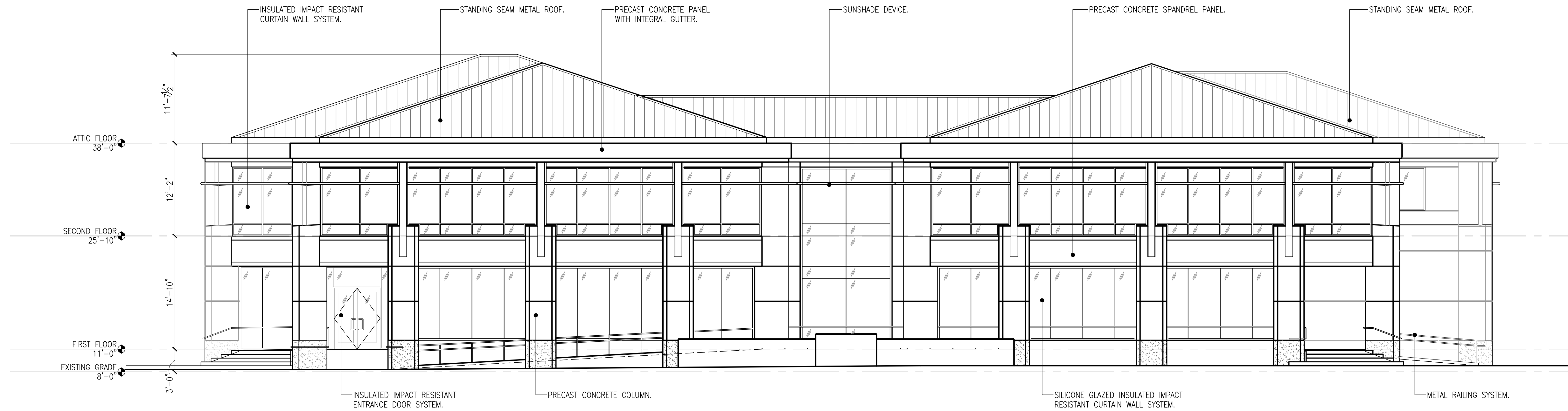
CIVIL ENGINEER:
Perez Engineering

MEP / FP ENGINEER:
TLC Engineering

PLANNER:
The Craig Co.

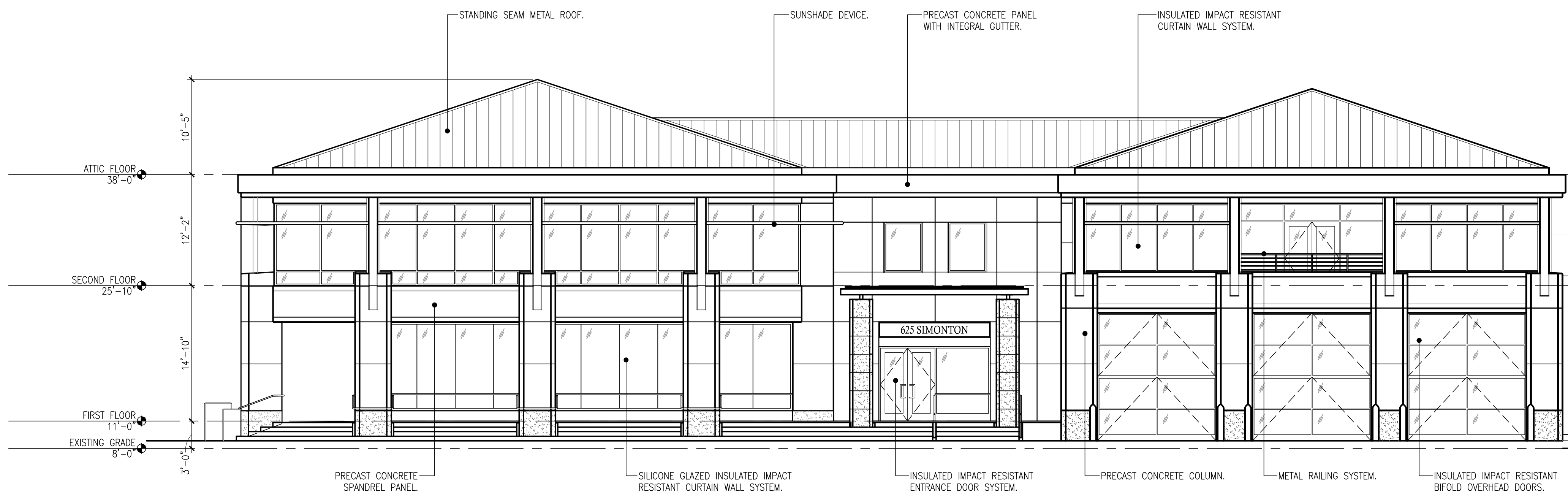
LANDSCAPE ARCHITECT:
Elizabeth Newland

Revisions:



0 8 16 24
GRAPHIC SCALE: 1/8" = 1'-0"

02 SOUTH ELEVATION - ADMINISTRATION BUILDING
SCALE: 1/8"=1'-0"
A3.1.2



0 8 16 24
GRAPHIC SCALE: 1/8" = 1'-0"

01 EAST ELEVATION - ADMINISTRATION BUILDING
SCALE: 1/8"=1'-0"
A3.1.2

KEY WEST ADMINISTRATION
BUILDING COMPLEX
575 ANGELA STREET
KEY WEST, FL 33040

PLOTTED: 8/18/2009 8:31 AM

Drawing Size 24x36	Project #: MK-08021D
Drawn By: ADS	Checked By: MBI

Title:

EXTERIOR
ELEVATIONS
ADMINISTRATION
BUILDING

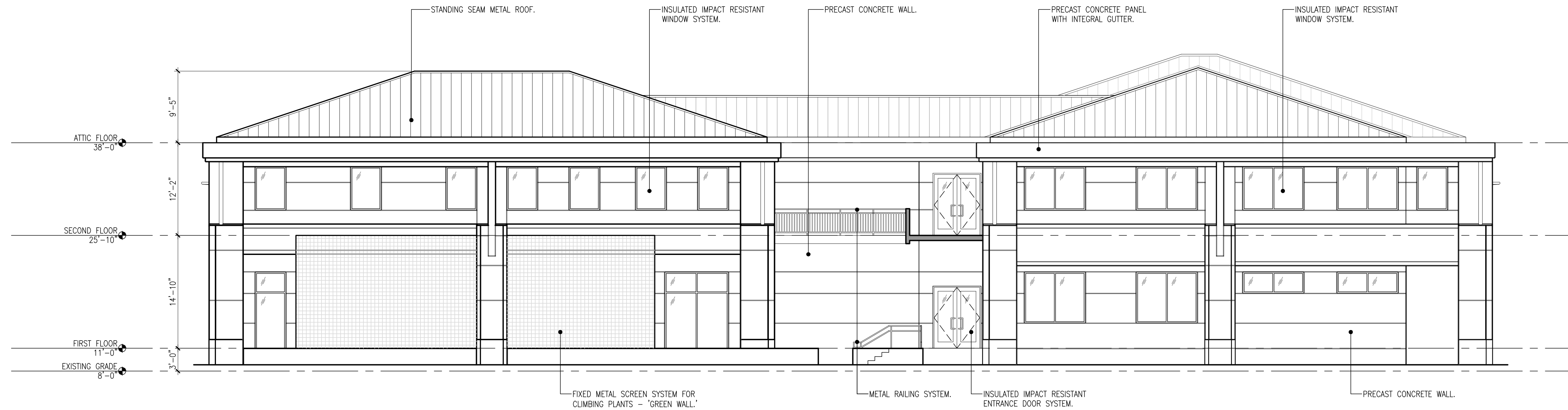
Sheet Number:

A3.1.2

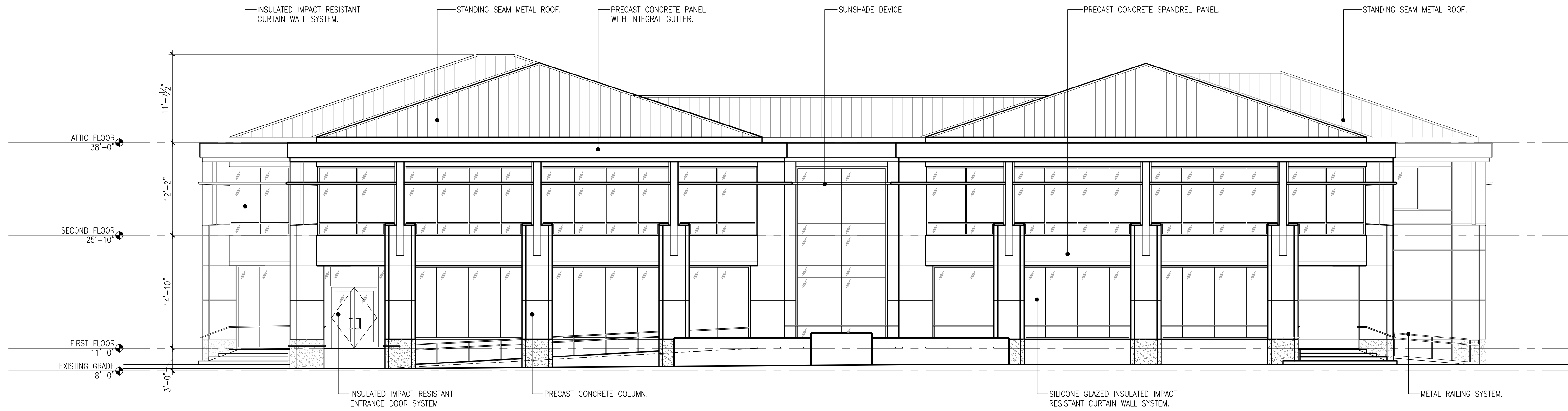
Date: - AUGUST 14, 2009

1 00000 1/8" 1/4" 3/8" 1/2" 3/4" 1" 1 1/2" 2" 3" 4" 6" 8" 12" 18" 24"

\\161.188.222.222\johnt\Share\Jobs\2009\MK-08021_City of KW Admin Bldg\Drawings\Arch\A3.1.2_24x36.dwg, 8/19/2009 8:31 AM, scale: 1'-0" = 1'-0", author: jarno



02 NORTH ELEVATION - ADMINISTRATION BUILDING
SCALE: 1/8"=1'-0"



01 WEST ELEVATION - ADMINISTRATION BUILDING
SCALE: 1/8"=1'-0"

Seal:

Consultants:

STRUCTURAL ENGINEER:
TKW Engineers

CIVIL ENGINEER:
Perez Engineering

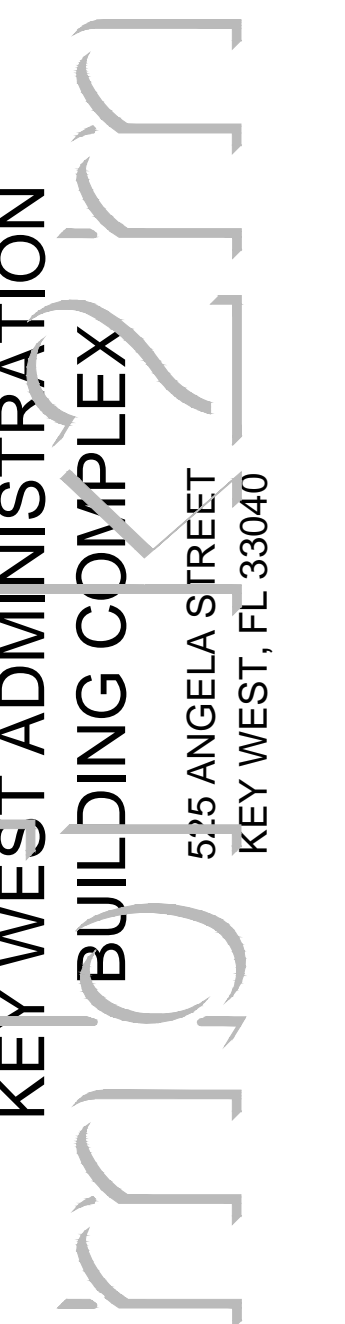
MEP / FP ENGINEER:
TLC Engineering

PLANNER:
The Craig Co.

LANDSCAPE ARCHITECT:
Elizabeth Newland

Revisions:

NO.	DESCRIPTION	DATE



NOTED: 8/18/2009 8:34 AM

Drawing Size 24x36	Project #: MK-08021D
Drawn By: ADS	Checked By: MBI

Title:
EXTERIOR
ELEVATIONS
ADMINISTRATION
BUILDING

Sheet Number:

A3.1.3

Date: - AUGUST 14, 2009

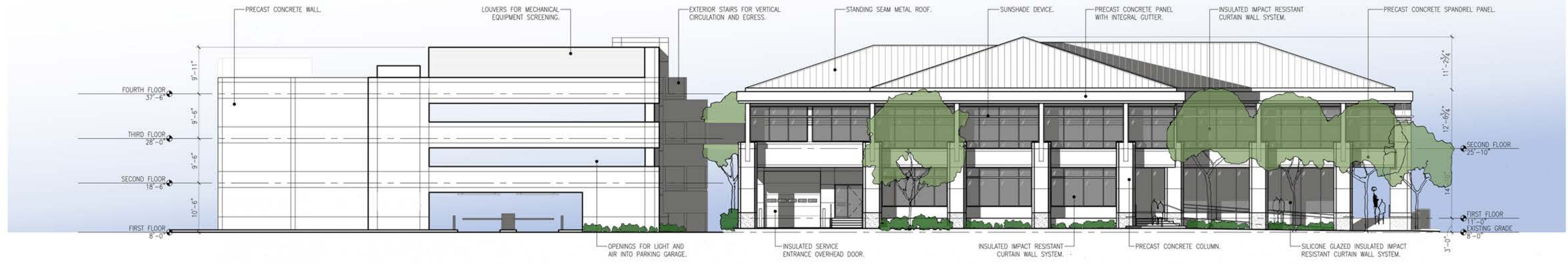
1 08214 A 0000 G 02/09/09 10:00 AM

\\192.168.222.222\share\shawn\work\08021\08021.dwg, 8/18/2009 8:34 AM, scale: 1'-0" = 1'-0", author: shawn

Seal:

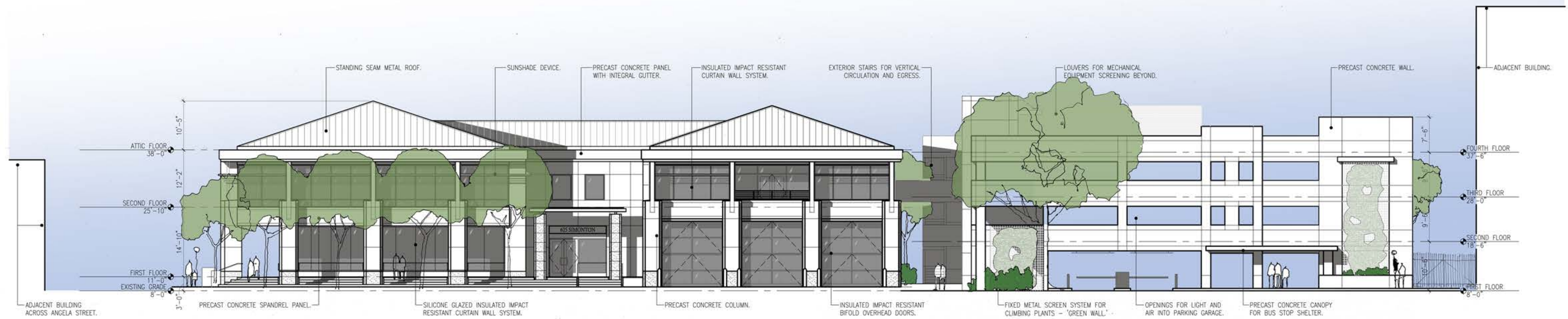
Consultants:
STRUCTURAL ENGINEER:
TKW Engineers
CIVIL ENGINEER:
Perez Engineering
MEP / FF ENGINEER:
TLC Engineering
PLANNER:
The Craig Co.
LANDSCAPE ARCHITECT:
Elizabeth Newland

Revisions:



0 8 16 32
GRAPHIC SCALE: 3/32" = 1'-0"

02 WEST ELEVATION - OVERALL
A3.1.1 SCALE: 3/32"=1'-0"



0 8 16 32
GRAPHIC SCALE: 3/32" = 1'-0"

01 EAST ELEVATION - OVERALL
A3.1.1 SCALE: 3/32"=1'-0"

KEY WEST ADMINISTRATION
BUILDING COMPLEX
5/25 ANGELA STREET
KEY WEST, FL 33040

NOTED: 8/24/2009 9:58 AM

Drawing Size: 24x36 Project #: MK-08021D
Drawn By: ADS Checked By: MBI

Title: OVERALL EXTERIOR ELEVATIONS

Sheet Number:

A3.1.1

Date: - AUGUST 14, 2009

©2009 by mbi | k2m Architecture, Inc.

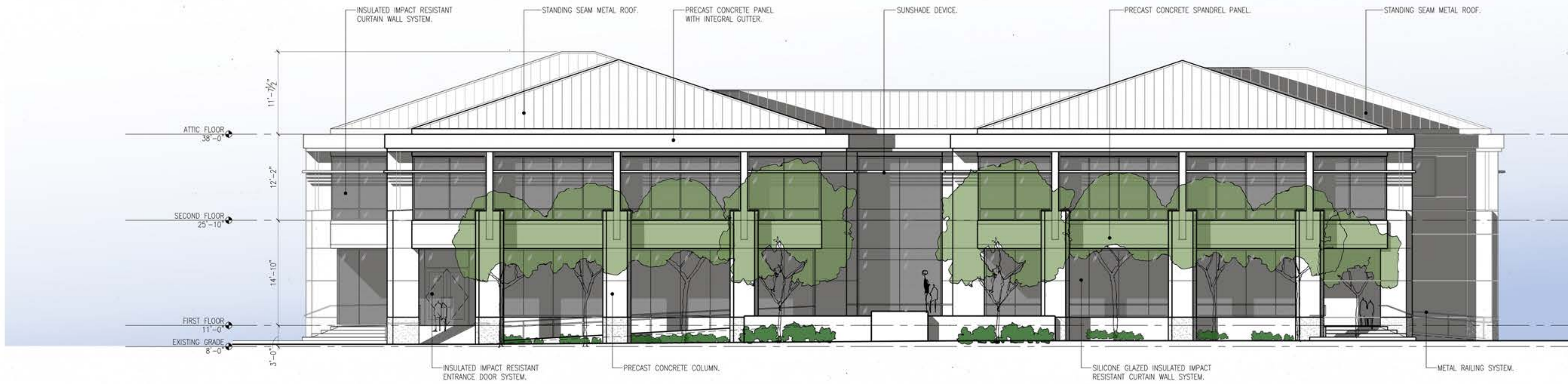
\\101.168.222.222\shared\Users\k2m\Projects\KeyWest\08021D\08021D.dwg, 8/17/2009 9:58 AM, scale: 1'-0" = 1'-0", author: mbi

Seal:

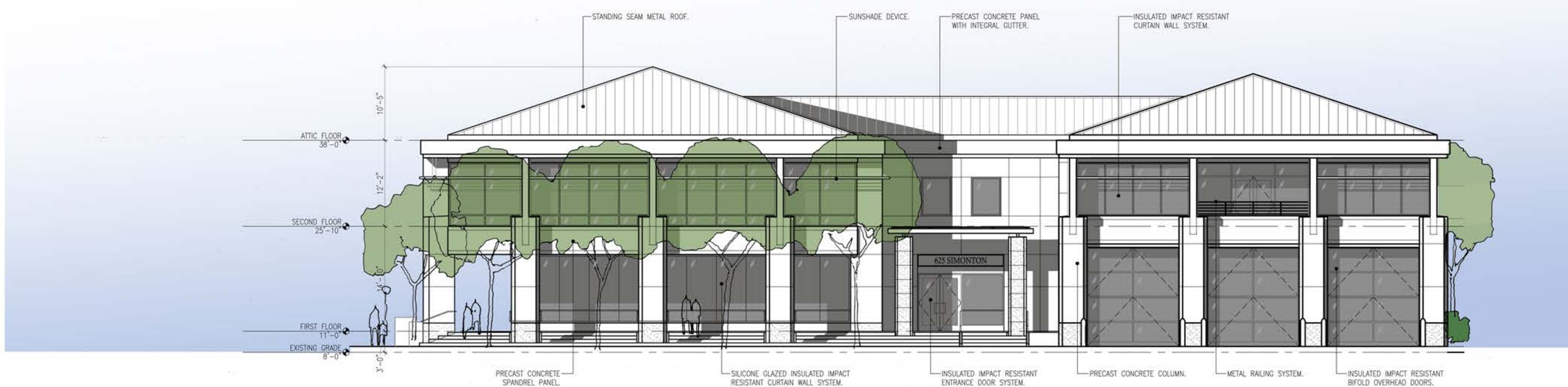
Consultants:

- STRUCTURAL ENGINEER:
TKW Engineers
- CIVIL ENGINEER:
Perez Engineering
- MEP / FF ENGINEER:
TLC Engineering
- PLANNER:
The Craig Co.
- LANDSCAPE ARCHITECT:
Elizabeth Newland

Revisions:



02 SOUTH ELEVATION - ADMINISTRATION BUILDING
A3.1.2 SCALE: 1/8"=1'-0"



01 EAST ELEVATION - ADMINISTRATION BUILDING
A3.1.2 SCALE: 1/8"=1'-0"

KEY WEST ADMINISTRATION BUILDING COMPLEX
 575 ANGELA STREET
 KEY WEST, FL 33040

DATE: 8/24/2009 9:59 AM

Drawing Size 24x36	Project # MK-08021D
Drawn By: ADS	Checked By: MBI

Title:
EXTERIOR ELEVATIONS
ADMINISTRATION BUILDING

Sheet Number:

A3.1.2

Date: - AUGUST 14, 2009
©2009 by mbi | k2m Architecture, Inc.

I:\101.168.222\222\Drawn\Drawn\Drawn\Arch\A3.1.2_A3.1.2.dwg, 8/24/2009 9:59 AM, scale: 1'-0" = 1'-0", author: mario