

100' 0 100'
SCALE 1"=100'
BAR IS TWO INCHES ON ORIGINAL DRAWINGS IF
NOT TWO INCHES ON THIS SHEET ADJUST
SCALES ACCORDINGLY



**BERMELLO AJAMIL
& PARTNERS • INC**

Architecture • Engineering • Planning
Interior Design • Landscape Architecture
2601 South Bayshore Drive
Suite 1000
Miami, Florida 33133
(305) 859-2050
Fax (305) 860-3700

PREPARED FOR/OWNER:
CITY OF KEY WEST, FL
P. O. BOX 1409
3140 FLAGLER AVENUE
KEY WEST, FL 33041



PROJECT NAME:

**TRUMAN
WATERFRONT
PARK**

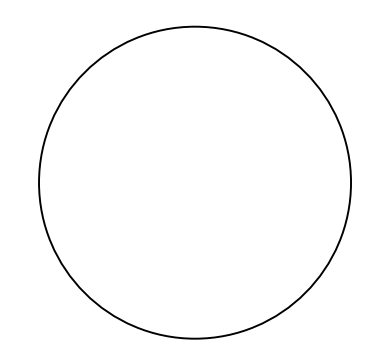
PROJECT LOCATION/ADDRESS:
**TRUMAN WATERFRONT PARK
WEST OF FORT STREET AND THE
TRUMAN ANNEX DEVELOPMENT,
NORTH OF KEY WEST NAVAL BASE**

SUB-CONSULTANT INFORMATION:

**PEREZ ENGINEERING &
DEVELOPMENT, INC.**
Certificate of Authorization No. 8579

1010 Kennedy Drive
Suite 201
Key West, Florida 33040
(305) 293-9440
Fax (305) 296-0243

PROFESSIONAL SEAL:



ALLEN E. PEREZ, P.E.
FLORIDA REGISTERED ENGINEER
51468

SUBMITTAL DESCRIPTION / MILESTONE:

**DEVELOPMENT
APPLICATION
March 3, 2013**

REVISIONS:

- 1 02/22/2013
- 2 02/25/2014

DRAWING SHEET INFORMATION

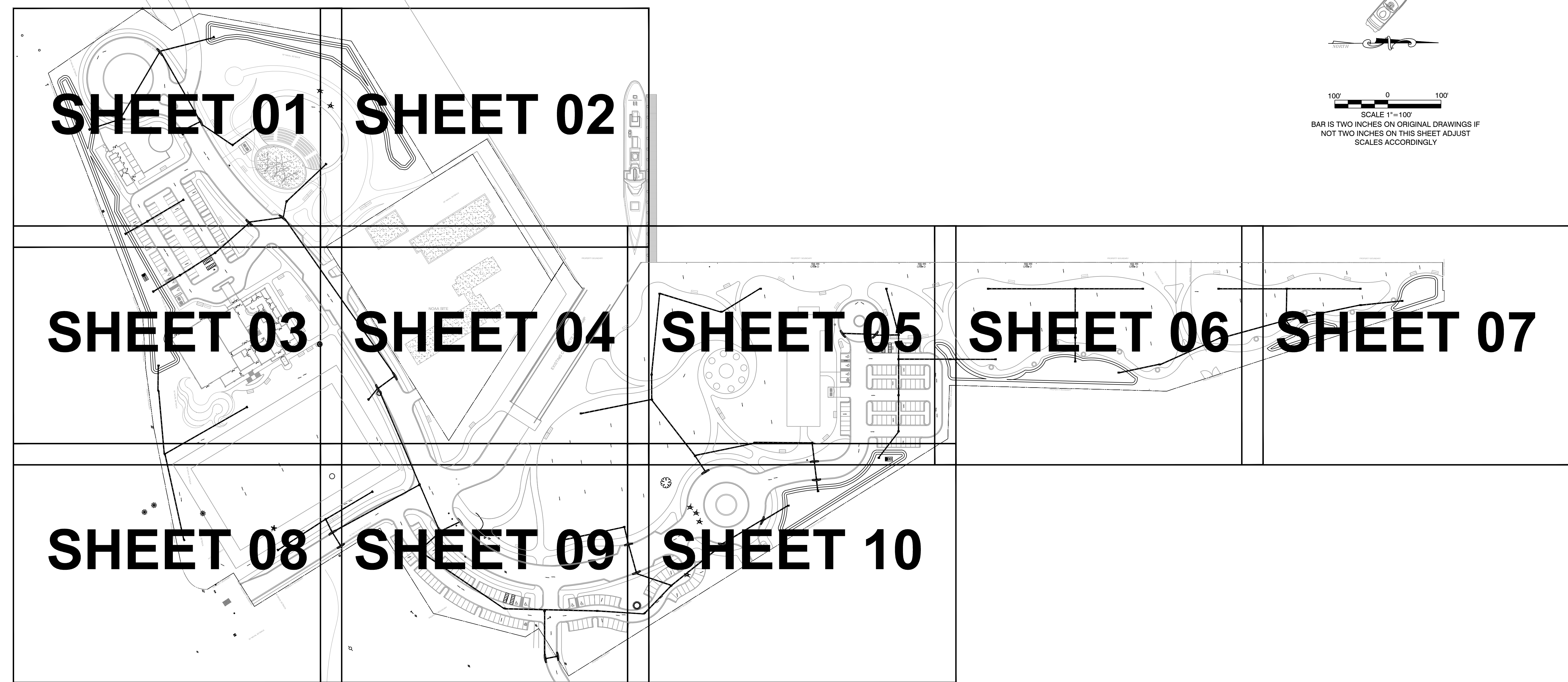
BA PROJECT NO.: 12010
SCALE: 1" = 100'
DATE: January 14, 2013
DRAWN BY: RTM
CHECKED BY: AEP
CADD FILE: X Truman Waterfront Base.dwg

DRAWING TITLE:

**CONCEPTUAL
DRAINAGE
PLAN**

SHEET NO.

CC-00



Drainage Calculations			
<i>Water Quantity - Predevelopment</i>			
Total Project Area	28.21	ac	1,228,828
Upland Project Area	28.21	ac	1,228,828
PerVIOUS Area	17.04	ac	742,262
Impervious Area	11.69	ac	509,216
% Impervious	0.41		
Rainfall for 25yr/24hr event (P)	9.00	in	
Rainfall for 25yr/3day event (P)	12.23	in	
Depth to Water Table	4.00	ft	
Predeveloped Available Storage	8.18	in	
Soil Storage (S)	4.79	in	
Qpre = (P - 0.2S)/2 (P + 0.8S)	7.91	in	
<i>Water Quantity - Postdevelopment</i>			
Project Area	28.21	ac	1,228,828
PerVIOUS Area	18.30	ac	797,148
Impervious Area	9.91	ac	431,680
% Impervious	35.13%		
Rainfall for 25yr/24hr event (P)	9	in	
Rainfall for 25yr/3day event (P)	12.23	in	
Depth to Water Table	4.00	ft	
Developed Available Storage	8.18	in	
Soil Storage (S)	5.31	in	
Qpost = (P - 0.2S)/2 (P + 0.8S)	7.57	in	
Runoff Volume from 25 year/ 3 day storm	213.62	ac-in	
<i>Postdevelopment - Predevelopment</i>			
Qpost - Qpre	-0.34	in	
Volume = QA	-9.56	ac-in	

Water Quality			
Project Area	28.21	ac	1,228,828
Surface Water	0.00	ac	0
Roof Area	0.94	ac	40,946
Pavement/Walkways	9.48	ac	412,949
PerVIOUS area	18.30	ac	797,148
Site area for Water Quality (Total area - (water surface + roof area))	27.27	ac	1,187,881
Impervious area for water Quality (Site area for Water Quality - PerVIOUS area)	8.97	ac	390,733
% Impervious	33%		
A) One and a half inches of runoff from project area	42.32	ac-in	
B) 3.75 inches times percent impervious (3.75 x percent impervious x (site area - surface water))	34.80	ac-in	
<i>Comparison of Water Quality Methods</i>			
	42.32	>	34.80
50 % reduction due to retention	21.16	ac-in	78,802
Pond A			29,137
Pond B			20,522
Pond C			10,317
Pond D			2,206
Pond E			3,107
Pond F			
Total Volume Provided			81,964



BERMELLO AJAMIL & PARTNERS • INC

Architecture • Engineering • Planning
Interior Design • Landscape Architecture
2601 South Bayshore Drive
Suite 1000
Miami, Florida 33133
(305) 859-2050
Fax (305) 860-3700

PREPARED FOR/OWNER:
CITY OF KEY WEST, FL
P. O. BOX 1409
3140 FLAGLER AVENUE
KEY WEST, FL 33041



PROJECT NAME:

**TRUMAN
WATERFRONT
PARK**

PROJECT LOCATION/ADDRESS:

TRUMAN WATERFRONT PARK
WEST OF FORT STREET AND THE
TRUMAN ANNEX DEVELOPMENT,
NORTH OF KEY WEST NAVAL BASE

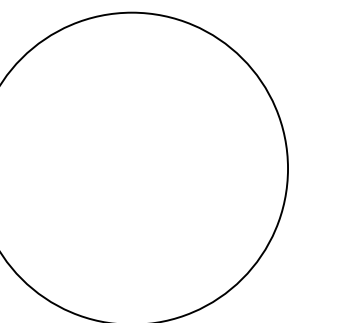
SUB-CONSULTANT INFORMATION:

**PEREZ ENGINEERING &
DEVELOPMENT, INC.**

Certificate of Authorization No. 8579

1010 Kennedy Drive
Suite 201
Key West, Florida 33040
(305) 293-9440
Fax (305) 296-0243

PROFESSIONAL SEAL:



ALLEN E. PEREZ, P.E.
FLORIDA REGISTERED ENGINEER
51468

SUBMITTAL DESCRIPTION / MILESTONE:

**DEVELOPMENT
APPLICATION
March 3, 2013**

REVISIONS:

- 1 02/22/2013
- 2 02/25/2014

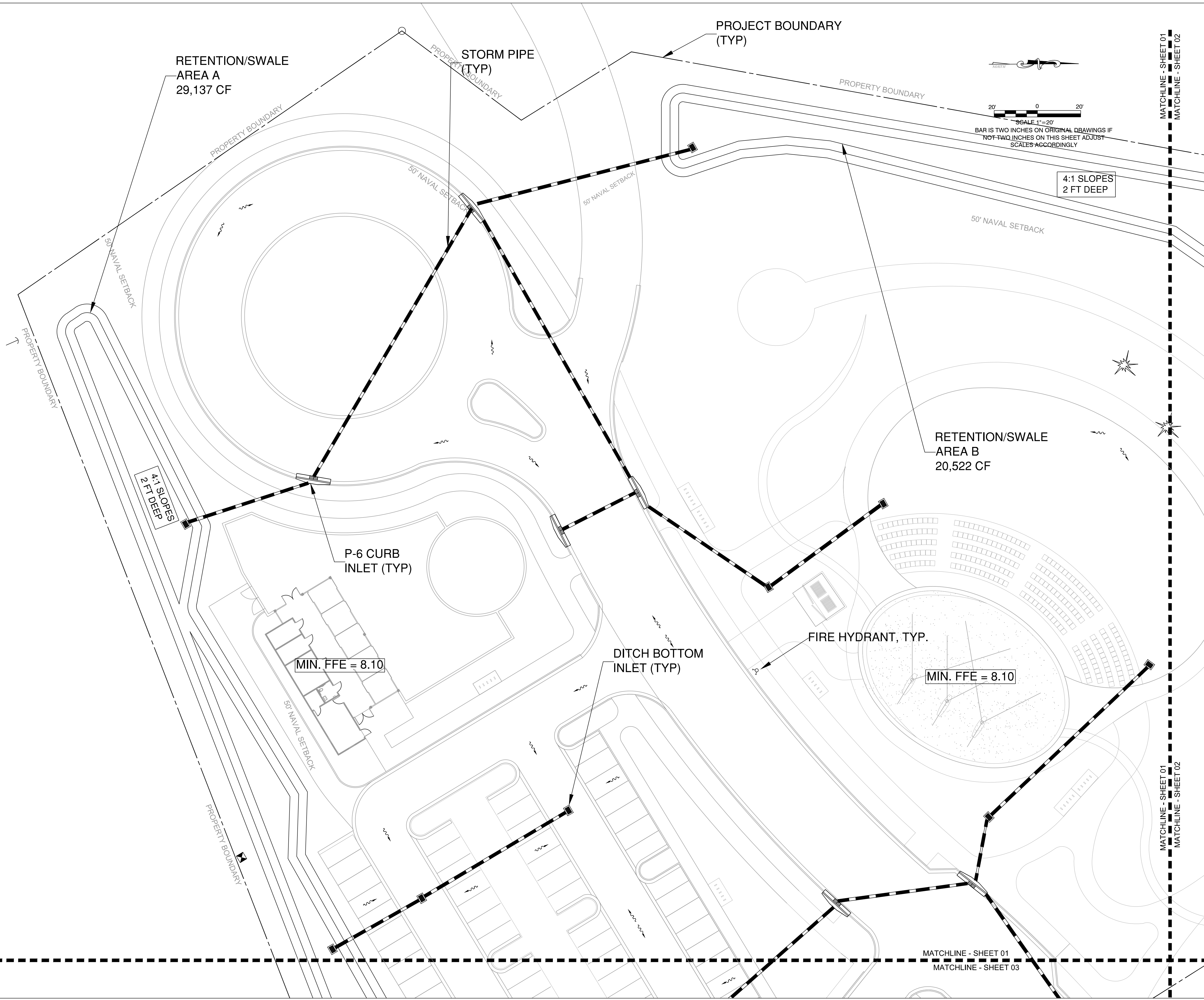
DRAWING SHEET INFORMATION

BA PROJECT NO.: 12010
SCALE: 1" = 20'
DATE: January 14, 2013
DRAWN BY: RTM
CHECKED BY: AEP
CADD FILE: X Truman Waterfront Base.dwg

DRAWING TITLE:
**CONCEPTUAL
DRAINAGE
PLAN**

SHEET NO.

CC-01

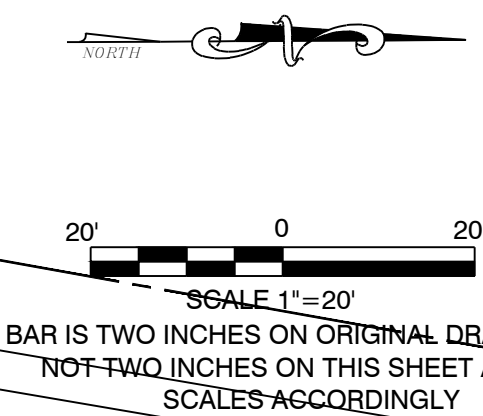


MATCHLINE - SHEET 01
MATCHLINE - SHEET 03

MATCHLINE - SHEET 01
MATCHLINE - SHEET 03

MATCHLINE - SHEET 01
MATCHLINE - SHEET 02

MATCHLINE - SHEET 01
MATCHLINE - SHEET 02





BERMELLO AJAMIL & PARTNERS • INC

Architecture • Engineering • Planning
Interior Design • Landscape Architecture
2601 South Bayshore Drive
Suite 1000
Miami, Florida 33133
(305) 859-2050
Fax (305) 860-3700

PREPARED FOR/OWNER:
CITY OF KEY WEST, FL
P. O. BOX 1409
3140 FLAGLER AVENUE
KEY WEST, FL 33041



PROJECT NAME:

TRUMAN WATERFRONT PARK

PROJECT LOCATION/ADDRESS:

TRUMAN WATERFRONT PARK
WEST OF FORT STREET AND THE
TRUMAN ANNEX DEVELOPMENT,
NORTH OF KEY WEST NAVAL BASE

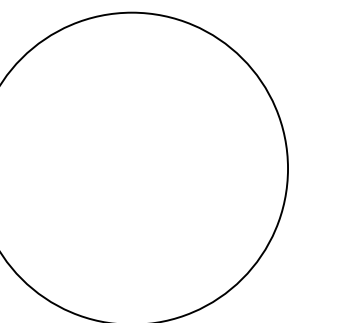
SUB-CONSULTANT INFORMATION:

PEREZ ENGINEERING & DEVELOPMENT, INC.

Certificate of Authorization No. 8579

1010 Kennedy Drive
Suite 201
Key West, Florida 33040
(305) 293-9440
Fax (305) 296-0243

PROFESSIONAL SEAL:



ALLEN E. PEREZ, P.E.
FLORIDA REGISTERED ENGINEER
51468

SUBMITTAL DESCRIPTION / MILESTONE:

DEVELOPMENT APPLICATION
March 3, 2013

REVISIONS:

- | | |
|---|------------|
| 1 | 02/22/2013 |
| 2 | 02/25/2014 |
| | |
| | |
| | |
| | |
| | |
| | |
| | |
| | |

DRAWING SHEET INFORMATION

BA PROJECT NO.: 12010
SCALE: 1" = 20'
DATE: January 14, 2013
DRAWN BY: RTM
CHECKED BY: AEP
CADD FILE: X Truman Waterfront Base.dwg

DRAWING TITLE:

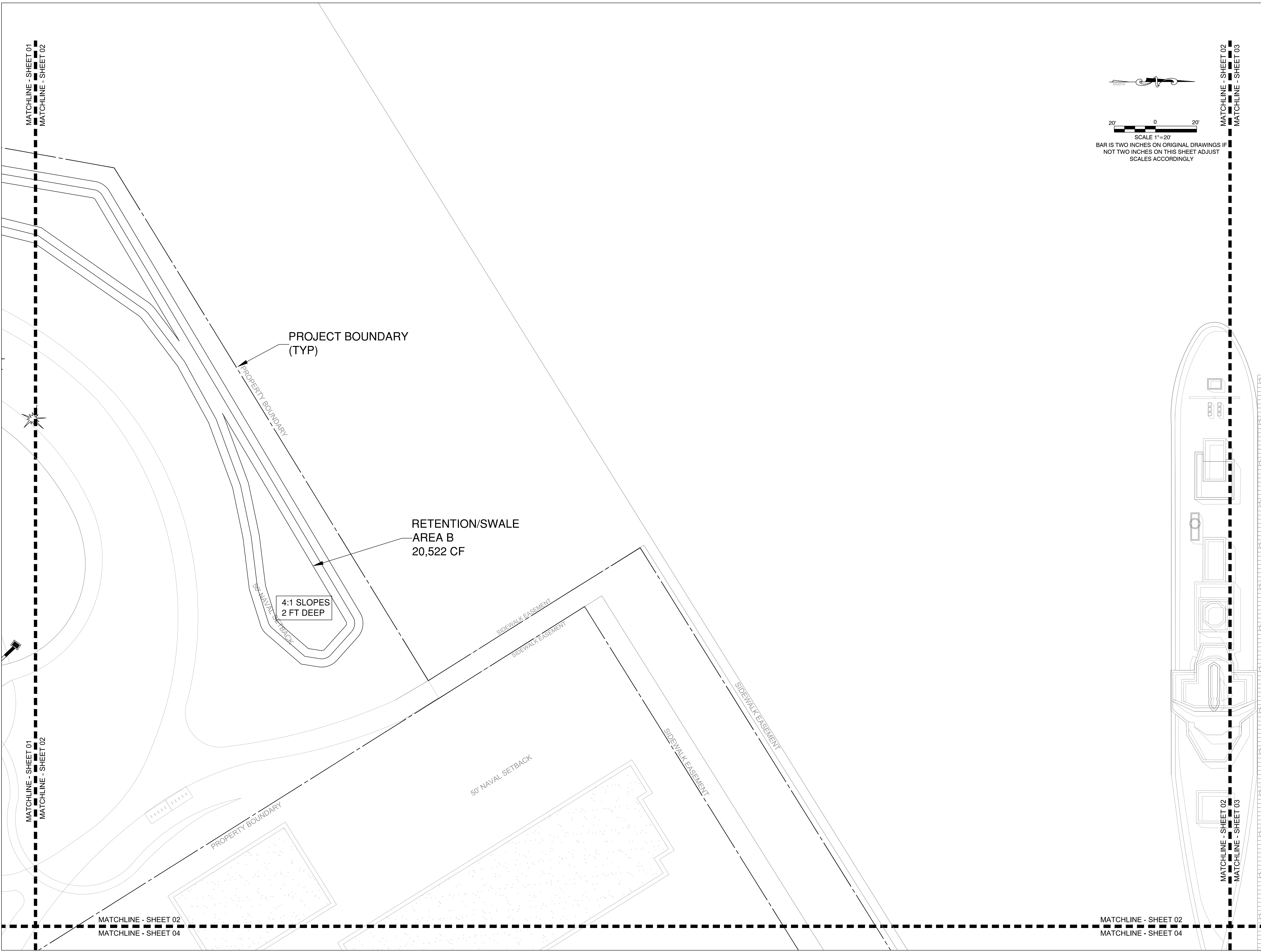
CONCEPTUAL DRAINAGE PLAN

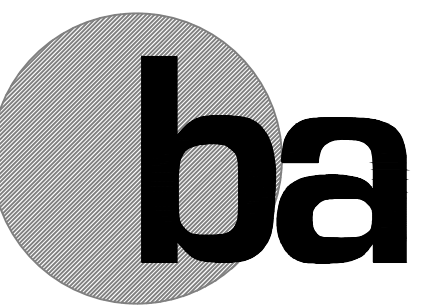
SHEET NO.

CC-02



SCALE 1"=20'
BAR IS TWO INCHES ON ORIGINAL DRAWINGS IF
NOT TWO INCHES ON THIS SHEET ADJUST
SCALES ACCORDINGLY





BERMELLO AJAMIL & PARTNERS • INC

Architecture • Engineering • Planning
Interior Design • Landscape Architecture
2601 South Bayshore Drive
Suite 1000
Miami, Florida 33133
(305) 859-2050
Fax (305) 860-3700

PREPARED FOR/OWNER:
CITY OF KEY WEST, FL
P. O. BOX 1409
3140 FLAGLER AVENUE
KEY WEST, FL 33041



PROJECT NAME:

TRUMAN WATERFRONT PARK

PROJECT LOCATION/ADDRESS:

TRUMAN WATERFRONT PARK
WEST OF FORT STREET AND THE
TRUMAN ANNEX DEVELOPMENT,
NORTH OF KEY WEST NAVAL BASE

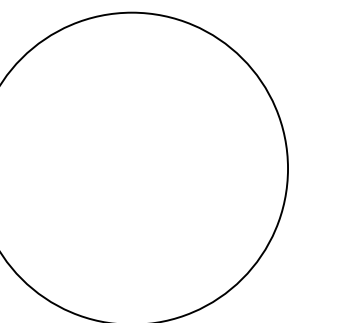
SUB-CONSULTANT INFORMATION:

PEREZ ENGINEERING & DEVELOPMENT, INC.

Certificate of Authorization No. 8579

1010 Kennedy Drive
Suite 201
Key West, Florida 33040
(305) 293-9440
Fax (305) 296-0243

PROFESSIONAL SEAL:



ALLEN E. PEREZ, P.E.
FLORIDA REGISTERED ENGINEER
51468

SUBMITTAL DESCRIPTION / MILESTONE:

DEVELOPMENT APPLICATION
March 3, 2013

REVISIONS:

1 02/22/2013
2 02/25/2014

DRAWING SHEET INFORMATION

BA PROJECT NO.: 12010
SCALE: 1" = 20'
DATE: January 14, 2013
DRAWN BY: RTM
CHECKED BY: AEP
CADD FILE: X Truman Waterfront Base.dwg

DRAWING TITLE:
CONCEPTUAL DRAINAGE PLAN
SHEET NO.

CC-03

MATCHLINE - SHEET 01
MATCHLINE - SHEET 03

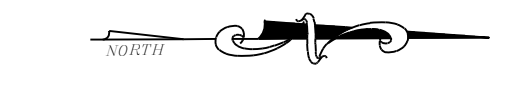
MATCHLINE - SHEET 01
MATCHLINE - SHEET 03

MATCHLINE - SHEET 03
MATCHLINE - SHEET 04

MATCHLINE - SHEET 03
MATCHLINE - SHEET 04

MATCHLINE - SHEET 03
MATCHLINE - SHEET 08

MATCHLINE - SHEET 03
MATCHLINE - SHEET 08



SCALE 1"=20'
BAR IS TWO INCHES ON ORIGINAL DRAWINGS IF NOT TWO INCHES ON THIS SHEET ADJUST SCALES ACCORDINGLY

PROJECT BOUNDARY (TYP)

TRIPLE CHAMBER
BAFFLE BOX
WITH WELL

RETENTION/SWALE
AREA A
29,137 CF

FIRE HYDRANT, TYP.

STORM PIPE
(TYP)

MIN. FFE = 7.10

4:1 SLOPES
2 FT DEEP

DITCH BOTTOM
INLET (TYP)

PROPERTY BOUNDARY

PROPERTY BOUNDARY

PROPERTY BOUNDARY

50' NAVAL SETBACK

50' NAVAL SETBACK



BERMELLO AJAMIL & PARTNERS • INC

Architecture • Engineering • Planning
Interior Design • Landscape Architecture
2601 South Bayshore Drive
Suite 1000
Miami, Florida 33133
(305) 859-2050
Fax (305) 860-3700

PREPARED FOR/OWNER:
CITY OF KEY WEST, FL
P. O. BOX 1409
3140 FLAGLER AVENUE
KEY WEST, FL 33041



PROJECT NAME:

TRUMAN WATERFRONT PARK

PROJECT LOCATION/ADDRESS:
TRUMAN WATERFRONT PARK
WEST OF FORT STREET AND THE
TRUMAN ANNEX DEVELOPMENT,
NORTH OF KEY WEST NAVAL BASE

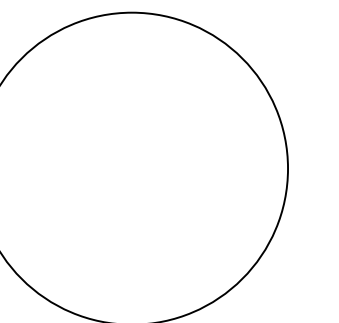
SUB-CONSULTANT INFORMATION:

PEREZ ENGINEERING & DEVELOPMENT, INC.

Certificate of Authorization No. 8579

1010 Kennedy Drive
Suite 201
Key West, Florida 33040
(305) 293-9440
Fax (305) 296-0243

PROFESSIONAL SEAL:



ALLEN E. PEREZ, P.E.
FLORIDA REGISTERED ENGINEER
51468

SUBMITTAL DESCRIPTION / MILESTONE:

DEVELOPMENT APPLICATION
March 3, 2013

REVISIONS:

- 1 02/22/2013
- 2 02/25/2014

DRAWING SHEET INFORMATION

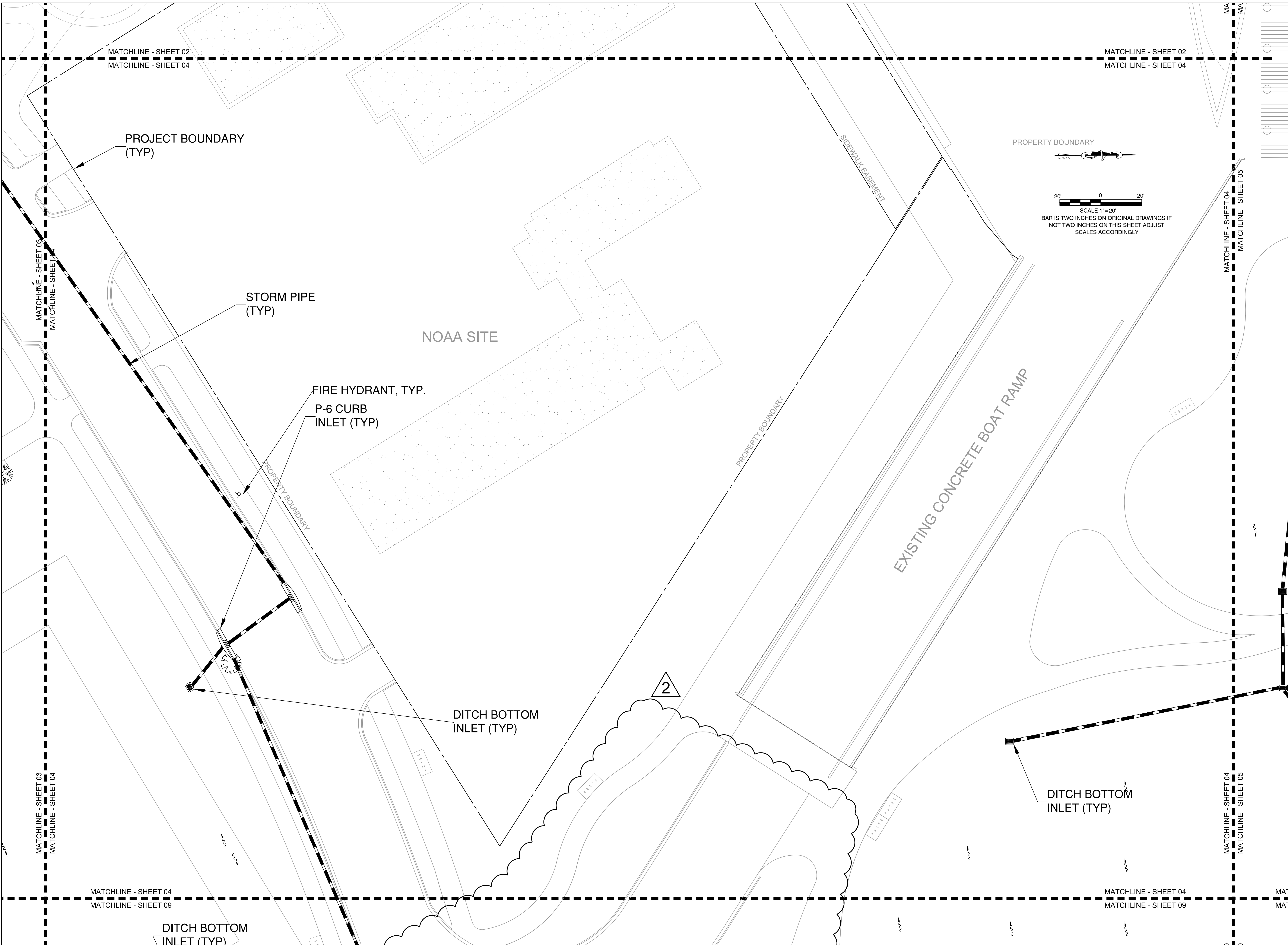
BA PROJECT NO.: 12010
SCALE: 1" = 20'
DATE: January 14, 2013
DRAWN BY: RTM
CHECKED BY: AEP
CADD FILE: X Truman Waterfront Base.dwg

DRAWING TITLE:

CONCEPTUAL DRAINAGE PLAN

SHEET NO.

CC-04





BERMELLO AJAMIL & PARTNERS • INC

Architecture • Engineering • Planning
Interior Design • Landscape Architecture
2601 South Bayshore Drive
Suite 1000
Miami, Florida 33133
(305) 859-2050
Fax (305) 860-3700

PREPARED FOR/OWNER:
CITY OF KEY WEST, FL
P. O. BOX 1409
3140 FLAGLER AVENUE
KEY WEST, FL 33041



PROJECT NAME:

TRUMAN WATERFRONT PARK

PROJECT LOCATION/ADDRESS:

TRUMAN WATERFRONT PARK
WEST OF FORT STREET AND THE
TRUMAN ANNEX DEVELOPMENT,
NORTH OF KEY WEST NAVAL BASE

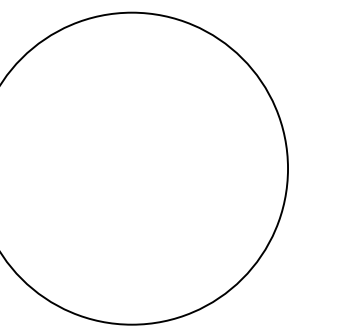
SUB-CONSULTANT INFORMATION:

PEREZ ENGINEERING & DEVELOPMENT, INC.

Certificate of Authorization No. 8579

1010 Kennedy Drive
Suite 201
Key West, Florida 33040
(305) 293-9440
Fax (305) 296-0243

PROFESSIONAL SEAL:



ALLEN E. PEREZ, P.E.
FLORIDA REGISTERED ENGINEER
51468

SUBMITTAL DESCRIPTION / MILESTONE:

DEVELOPMENT APPLICATION
March 3, 2013

REVISIONS:

1	02/22/2013
2	02/25/2014

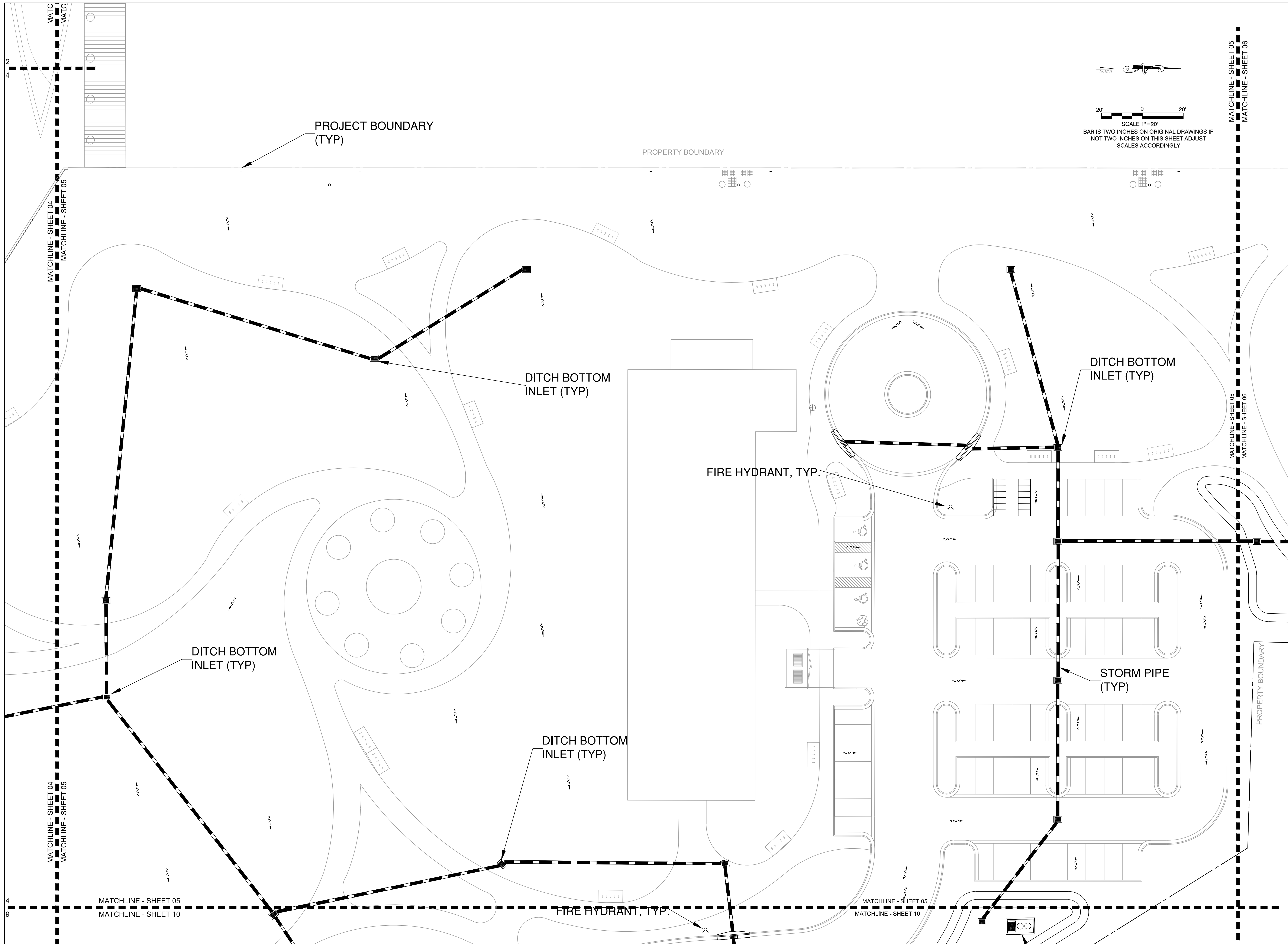
DRAWING SHEET INFORMATION

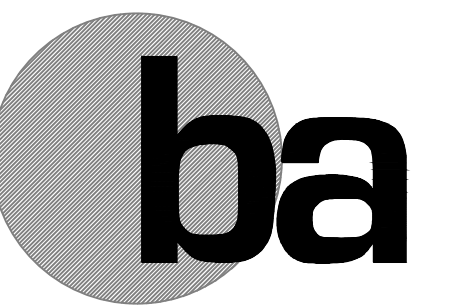
BA PROJECT NO.: 12010
SCALE: 1" = 20'
DATE: January 14, 2013
DRAWN BY: RTM
CHECKED BY: AEP
CADD FILE: X Truman Waterfront Base.dwg

DRAWING TITLE:
CONCEPTUAL DRAINAGE PLAN

SHEET NO.

CC-05





BERMELLO AJAMIL & PARTNERS • INC

Architecture • Engineering • Planning
Interior Design • Landscape Architecture
2601 South Bayshore Drive
Suite 1000
Miami, Florida 33133
(305) 859-2050
Fax (305) 860-3700

PREPARED FOR/OWNER:
CITY OF KEY WEST, FL
P. O. BOX 1409
3140 FLAGLER AVENUE
KEY WEST, FL 33041



PROJECT NAME:

TRUMAN WATERFRONT PARK

PROJECT LOCATION/ADDRESS:

TRUMAN WATERFRONT PARK
WEST OF FORT STREET AND THE
TRUMAN ANNEX DEVELOPMENT,
NORTH OF KEY WEST NAVAL BASE

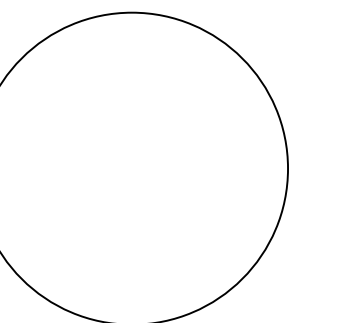
SUB-CONSULTANT INFORMATION:

Perez Engineering & Development, Inc.

Certificate of Authorization No. 8579

1010 Kennedy Drive
Suite 201
Key West, Florida 33040
(305) 293-9440
Fax (305) 296-0243

PROFESSIONAL SEAL:



ALLEN E. PEREZ, P.E.
FLORIDA REGISTERED ENGINEER
51468

SUBMITTAL DESCRIPTION / MILESTONE:

DEVELOPMENT APPLICATION
March 3, 2013

REVISIONS:

- 1 02/22/2013
- 2 02/25/2014

DRAWING SHEET INFORMATION

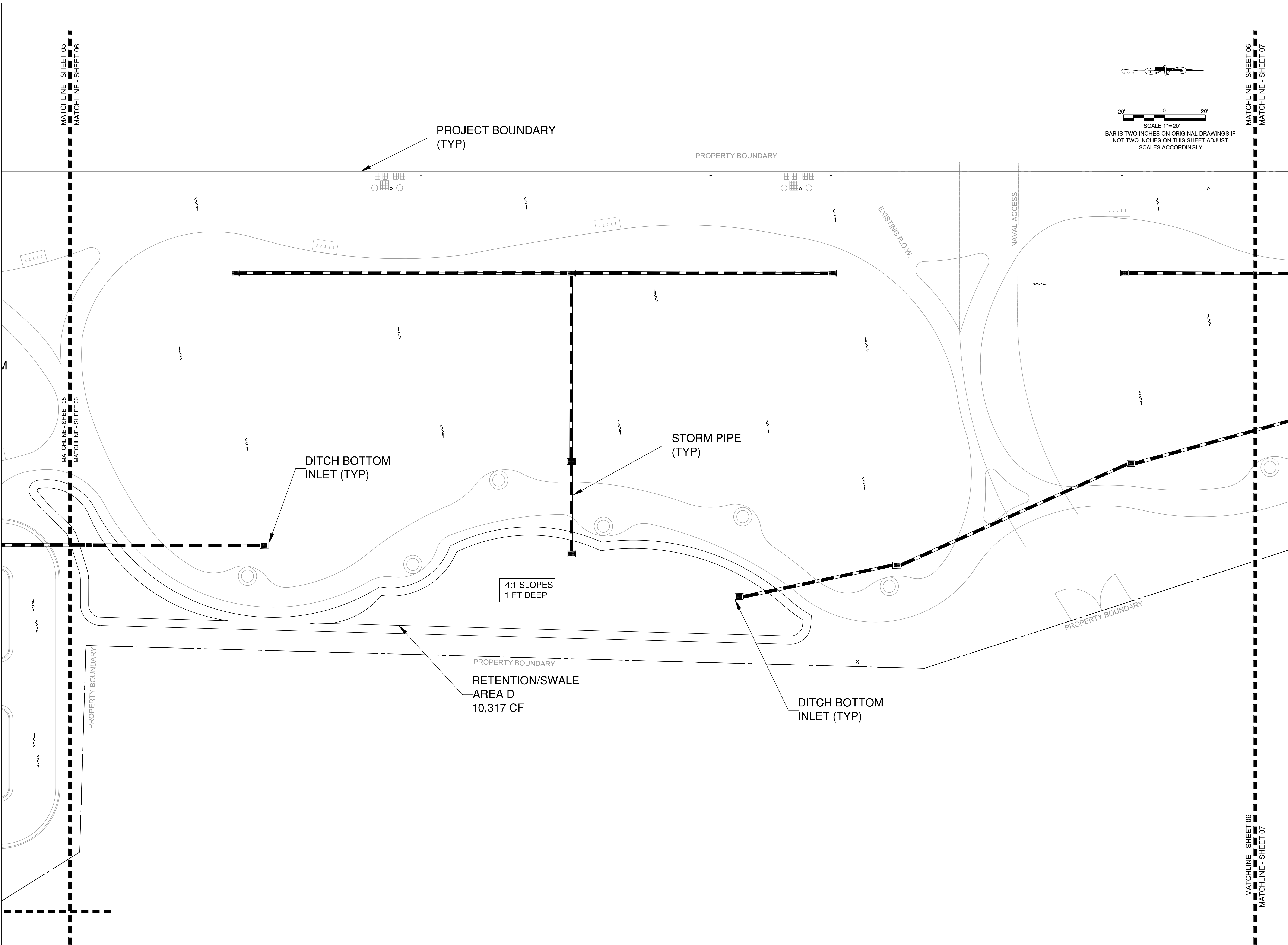
BA PROJECT NO.: 12010
SCALE: 1" = 20'
DATE: January 14, 2013
DRAWN BY: RTM
CHECKED BY: AEP
CADD FILE: X Truman Waterfront Base.dwg

DRAWING TITLE:

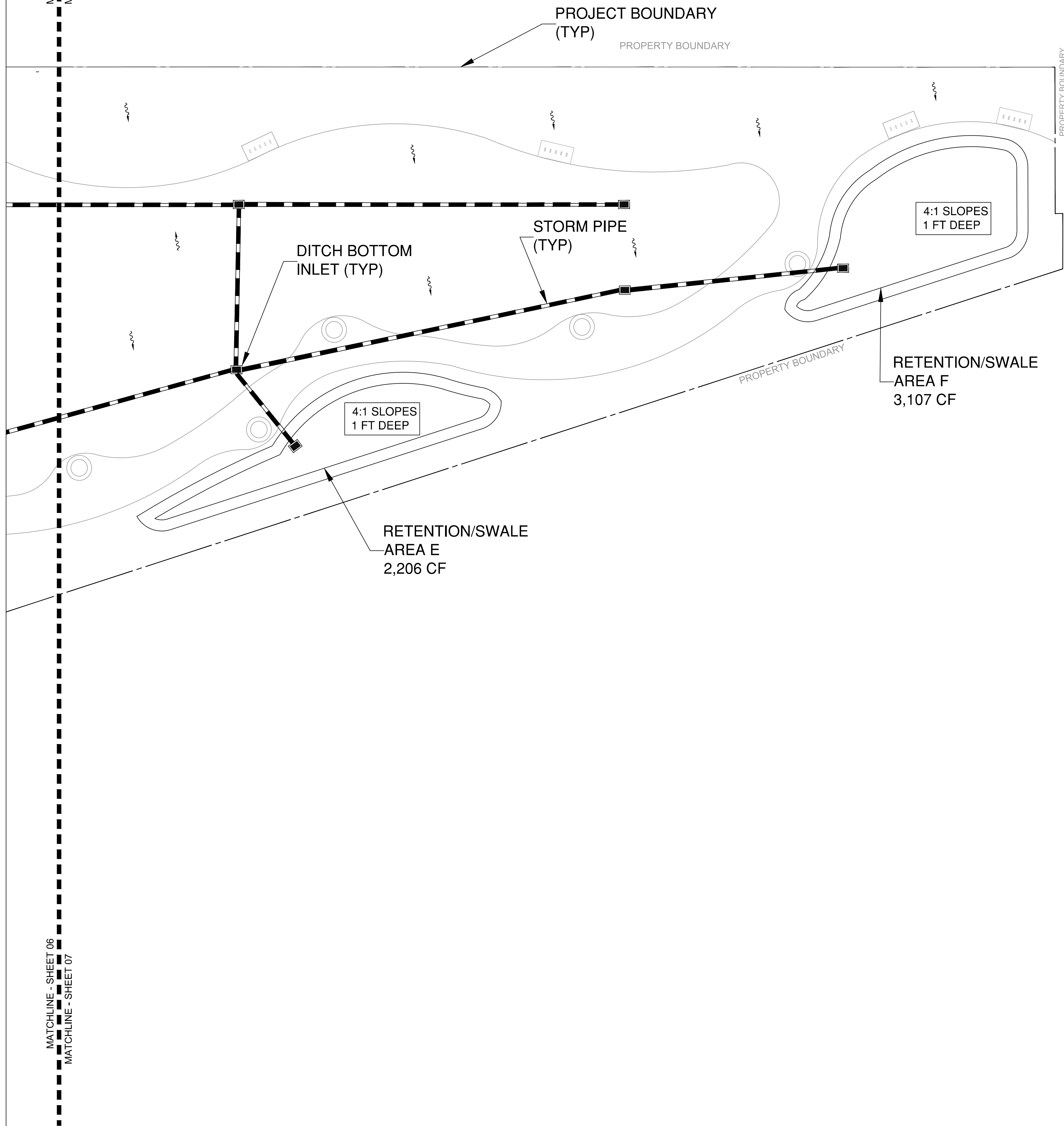
CONCEPTUAL DRAINAGE PLAN

SHEET NO.

CC-06



MATCHLINE - SHEET 06
MATCHLINE - SHEET 07



SCALE 1" = 20'
 BAR IS TWO INCHES ON ORIGINAL DRAWINGS IF
 NOT TWO INCHES ON THIS SHEET ADJUST
 SCALES ACCORDINGLY



**BERMELLO AJAMIL
& PARTNERS • INC**

Architecture • Engineering • Planning
 Interior Design • Landscape Architecture
 2601 South Bayshore Drive
 Suite 1000
 Miami, Florida 33133
 (305) 859-2050
 Fax (305) 860-3700

PREPARED FOR/OWNER:
CITY OF KEY WEST, FL
 P. O. BOX 1409
 3140 FLAGLER AVENUE
 KEY WEST, FL 33041



PROJECT NAME:

**TRUMAN
WATERFRONT
PARK**

PROJECT LOCATION/ADDRESS:

TRUMAN WATERFRONT PARK
 WEST OF FORT STREET AND THE
 TRUMAN ANNEX DEVELOPMENT,
 NORTH OF KEY WEST NAVAL BASE

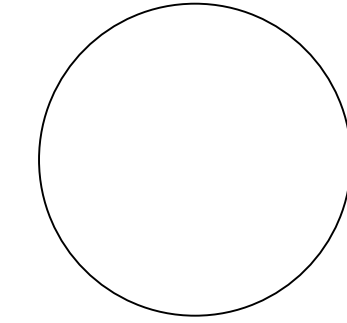
SUB-CONSULTANT INFORMATION:

**PEREZ ENGINEERING &
DEVELOPMENT, INC.**

Certificate of Authorization No. 8579

1010 Kennedy Drive
 Suite 201
 Key West, Florida 33040
 (305) 293-9440
 Fax (305) 296-0243

PROFESSIONAL SEAL:



ALLEN E. PEREZ, P.E.
 FLORIDA REGISTERED ENGINEER
 51468

SUBMITTAL DESCRIPTION / MILESTONE:

**DEVELOPMENT
APPLICATION
March 3, 2013**

REVISIONS:

1	02/22/2013	
2	02/25/2014	

DRAWING SHEET INFORMATION

BA PROJECT NO.: 12010
 SCALE: 1" = 20'
 DATE: January 14, 2013
 DRAWN BY: RTM
 CHECKED BY: AEP
 CADD FILE: X Truman Waterfront Base.dwg

DRAWING TITLE:

**CONCEPTUAL
DRAINAGE
PLAN**

SHEET NO.

CC-07

MATCHLINE - SHEET 03
MATCHLINE - SHEET 08

MATCHLINE - SHEET 03
MATCHLINE - SHEET 08



**BERMELLO AJAMIL
& PARTNERS • INC**

Architecture • Engineering • Planning
Interior Design • Landscape Architecture
2601 South Bayshore Drive
Suite 1000
Miami, Florida 33133
(305) 859-2050
Fax (305) 860-3700

PREPARED FOR/OWNER:
CITY OF KEY WEST, FL
P. O. BOX 1409
3140 FLAGLER AVENUE
KEY WEST, FL 33041



PROJECT NAME:

**TRUMAN
WATERFRONT
PARK**

PROJECT LOCATION/ADDRESS:

TRUMAN WATERFRONT PARK
WEST OF FORT STREET AND THE
TRUMAN ANNEX DEVELOPMENT,
NORTH OF KEY WEST NAVAL BASE

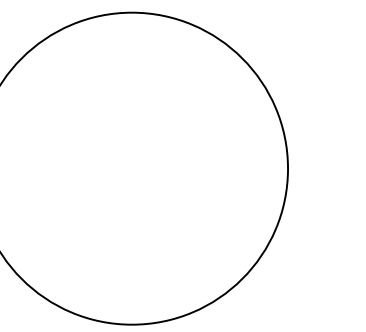
SUB-CONSULTANT INFORMATION:

**PEREZ ENGINEERING &
DEVELOPMENT, INC.**

Certificate of Authorization No. 8579

1010 Kennedy Drive
Suite 201
Key West, Florida 33040
(305) 293-9440
Fax (305) 296-0243

PROFESSIONAL SEAL:



ALLEN E. PEREZ, P.E.
FLORIDA REGISTERED ENGINEER
51468

SUBMITTAL DESCRIPTION / MILESTONE:

**DEVELOPMENT
APPLICATION
March 3, 2013**

REVISIONS:

1 02/22/2013
2 02/25/2014

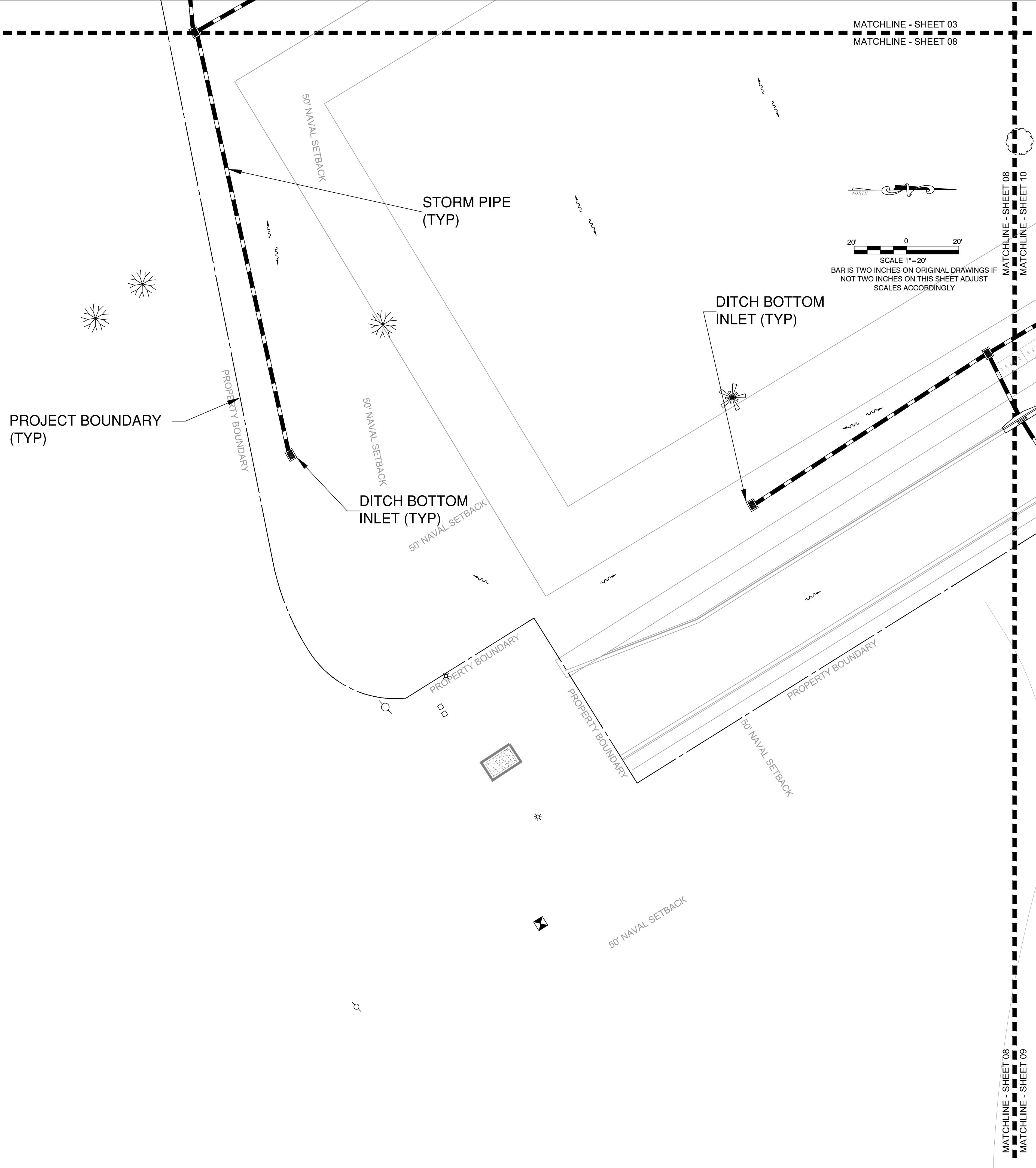
DRAWING SHEET INFORMATION

BA PROJECT NO.: 12010
SCALE: 1" = 20'
DATE: January 14, 2013
DRAWN BY: RTM
CHECKED BY: AEP
CADD FILE: X Truman Waterfront Base.dwg

DRAWING TITLE:
**CONCEPTUAL
DRAINAGE
PLAN**

SHEET NO.

CC-08



MATCHLINE - SHEET 08

MATCHLINE - SHEET 10

MATCHLINE - SHEET 09

MATCHLINE - SHEET 08



BERMELLO AJAMIL & PARTNERS • INC

Architecture • Engineering • Planning
Interior Design • Landscape Architecture
2601 South Bayshore Drive
Suite 1000
Miami, Florida 33133
(305) 859-2050
Fax (305) 860-3700

PREPARED FOR/OWNER:
CITY OF KEY WEST, FL
P. O. BOX 1409
3140 FLAGLER AVENUE
KEY WEST, FL 33041



PROJECT NAME:

**TRUMAN
WATERFRONT
PARK**

PROJECT LOCATION/ADDRESS:

TRUMAN WATERFRONT PARK
WEST OF FORT STREET AND THE
TRUMAN ANNEX DEVELOPMENT,
NORTH OF KEY WEST NAVAL BASE

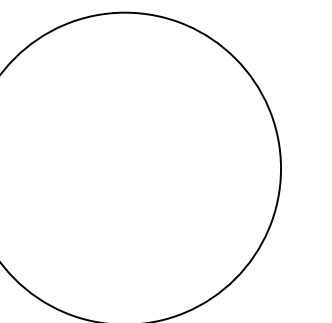
SUB-CONSULTANT INFORMATION:

**PEREZ ENGINEERING &
DEVELOPMENT, INC.**

Certificate of Authorization No. 8579

1010 Kennedy Drive
Suite 201
Key West, Florida 33040
(305) 293-9440
Fax (305) 296-0243

PROFESSIONAL SEAL:



ALLEN E. PEREZ, P.E.
FLORIDA REGISTERED ENGINEER
51468

SUBMITTAL DESCRIPTION / MILESTONE:

**DEVELOPMENT
APPLICATION
March 3, 2013**

REVISIONS:

- 1 02/22/2013
- 2 02/25/2014

DRAWING SHEET INFORMATION

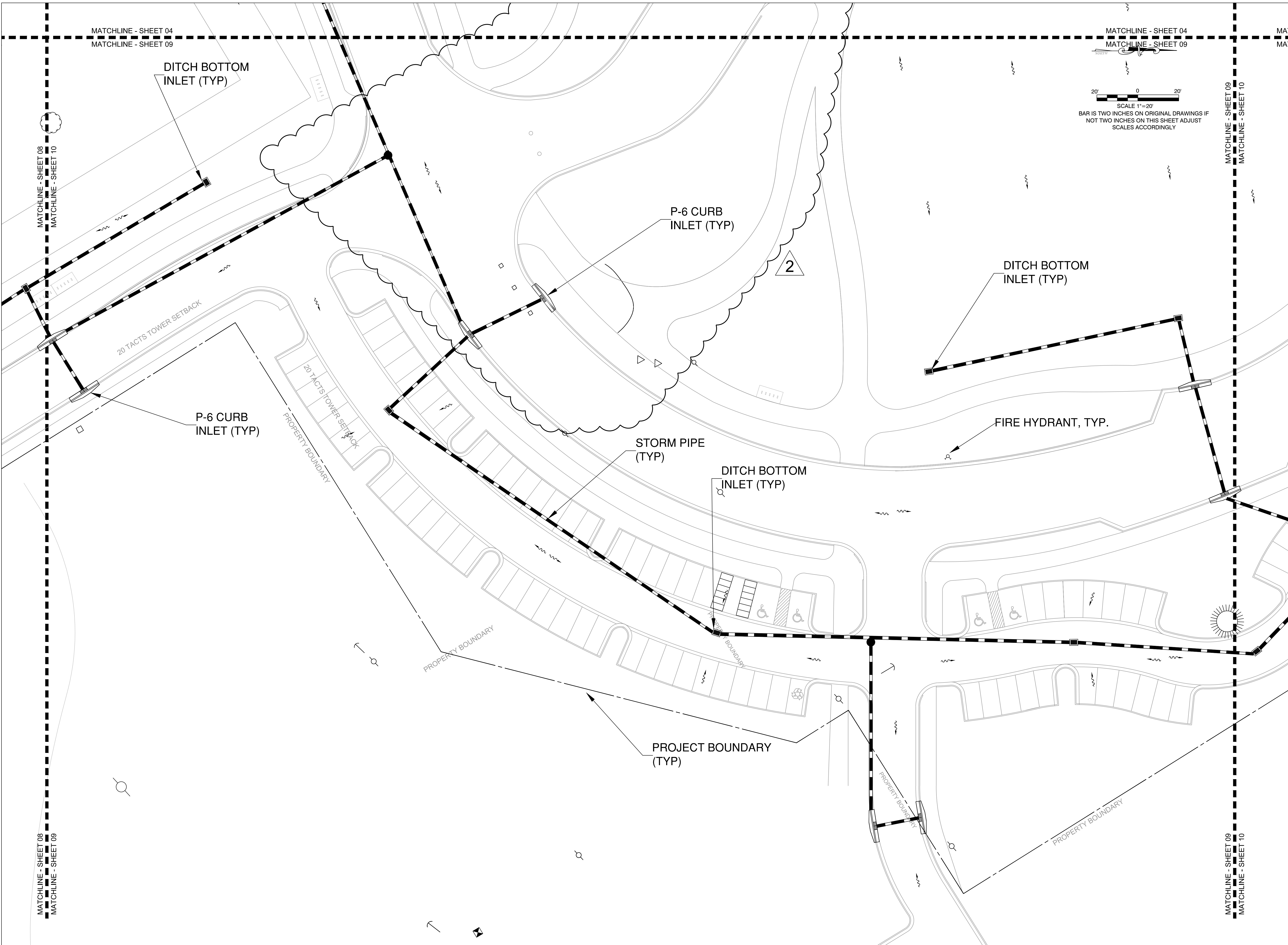
BA PROJECT NO.: 12010
SCALE: 1" = 20'
DATE: January 14, 2013
DRAWN BY: RTM
CHECKED BY: AEP
CADD FILE: X Truman Waterfront Base.dwg

DRAWING TITLE:

**CONCEPTUAL
DRAINAGE
PLAN**

SHEET NO.

CC-09



MATCHLINE - SHEET 04
MATCHLINE - SHEET 09

MATCHLINE - SHEET 04
MATCHLINE - SHEET 09

MATCHLINE - SHEET 09
MATCHLINE - SHEET 10

MATCHLINE - SHEET 08
MATCHLINE - SHEET 10

MATCHLINE - SHEET 08
MATCHLINE - SHEET 09

MATCHLINE - SHEET 09
MATCHLINE - SHEET 10

DITCH BOTTOM
INLET (TYP)

P-6 CURB
INLET (TYP)

DITCH BOTTOM
INLET (TYP)

P-6 CURB
INLET (TYP)

STORM PIPE
(TYP)

DITCH BOTTOM
INLET (TYP)

FIRE HYDRANT, TYP.

PROJECT BOUNDARY
(TYP)

20 TACTS TOWER SETBACK

20 TACTS TOWER SETBACK

PROPERTY BOUNDARY

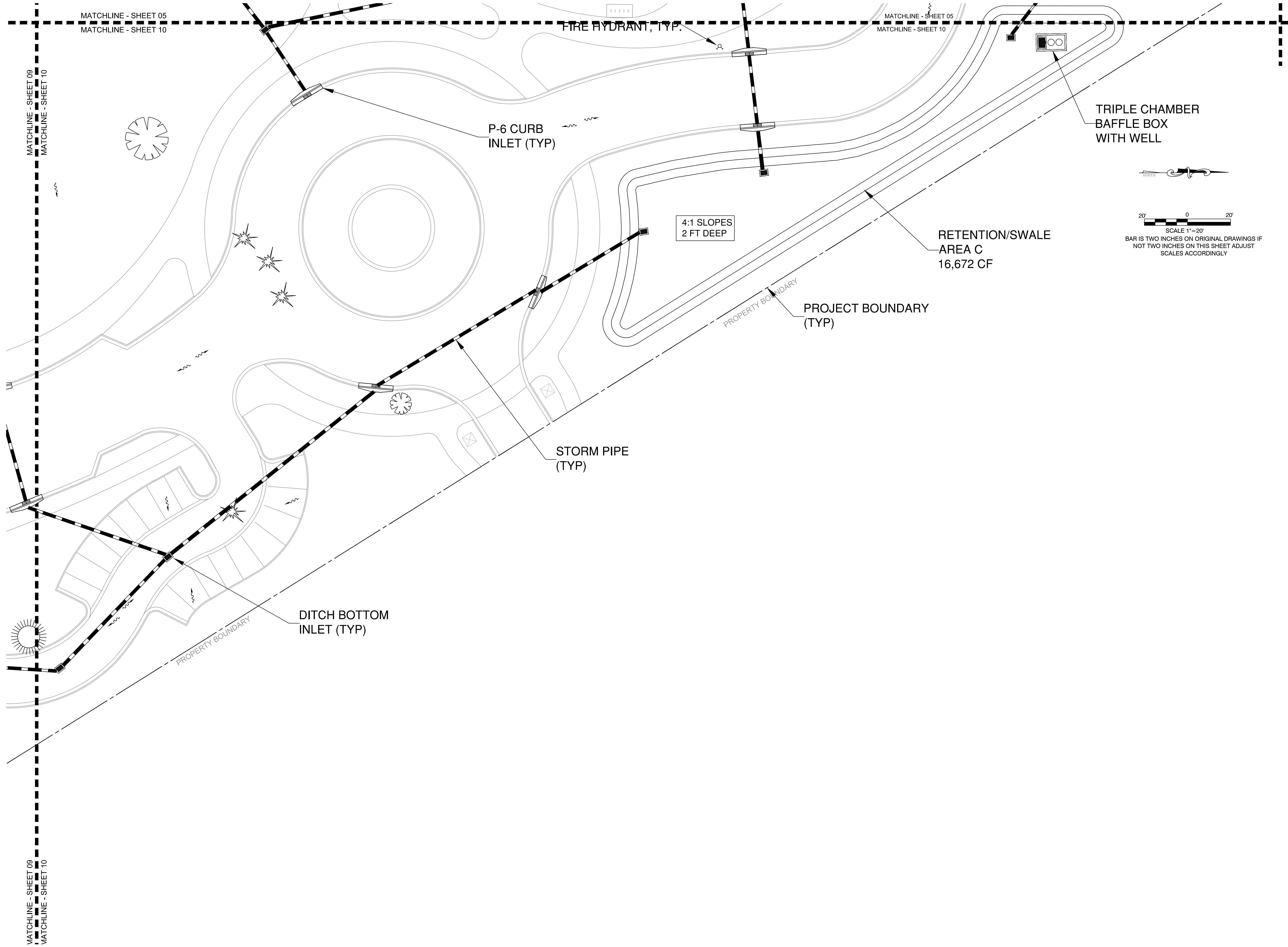
PROPERTY BOUNDARY

PROPERTY BOUNDARY

PROPERTY BOUNDARY

PROPERTY BOUNDARY

2



BERMELLO AJAMIL & PARTNERS • INC

Architecture • Engineering • Planning
Interior Design • Landscape Architecture
2601 South Bayshore Drive
Suite 1000
Miami, Florida 33133
(305) 859-2050
Fax (305) 860-3700

PREPARED FOR/OWNER:
CITY OF KEY WEST, FL
P. O. BOX 1409
3140 FLAGLER AVENUE
KEY WEST, FL 33041



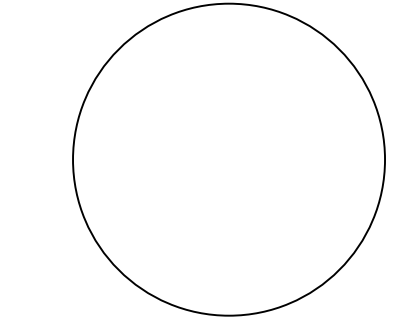
PROJECT NAME:
TRUMAN WATERFRONT PARK

PROJECT LOCATION/ADDRESS:
TRUMAN WATERFRONT PARK
WEST OF FORT STREET AND THE
TRUMAN ANNEX DEVELOPMENT,
NORTH OF KEY WEST NAVAL BASE

SUB-CONSULTANT INFORMATION:
PEREZ ENGINEERING & DEVELOPMENT, INC.
Certificate of Authorization No. 8579

1010 Kennedy Drive
Suite 201
Key West, Florida 33040
(305) 293-9440
Fax (305) 296-0243

PROFESSIONAL SEAL:



ALLEN E. PEREZ, P.E.
FLORIDA REGISTERED ENGINEER
51468

SUBMITTAL DESCRIPTION / MILESTONE:

DEVELOPMENT APPLICATION
March 3, 2013

REVISIONS:

1	02/22/2013	
2	02/25/2014	

DRAWING SHEET INFORMATION
BA PROJECT NO.: 12010
SCALE: 1" = 20'
DATE: January 14, 2013
DRAWN BY: RTM
CHECKED BY: AEP
CADD FILE: X Truman Waterfront Base.dwg

DRAWING TITLE:
CONCEPTUAL DRAINAGE PLAN
SHEET NO.

CC-10