



Jim Scholl
City Manager

THE CITY OF KEY WEST
P.O. BOX 1409
KEY WEST, FL 33041-1409

525 Angela Street
(305) 809-3888
FAX 809-3886
jscholl@keywestcity.com

May 22, 2011

Subject: Emergency Authorization of Resolution 12-2400: Approval of Task Order 5-12 with CH2MHILL for evaluation, testing and development of a Statement of Work of the electrical switchgear located at the Navy Mole Pier

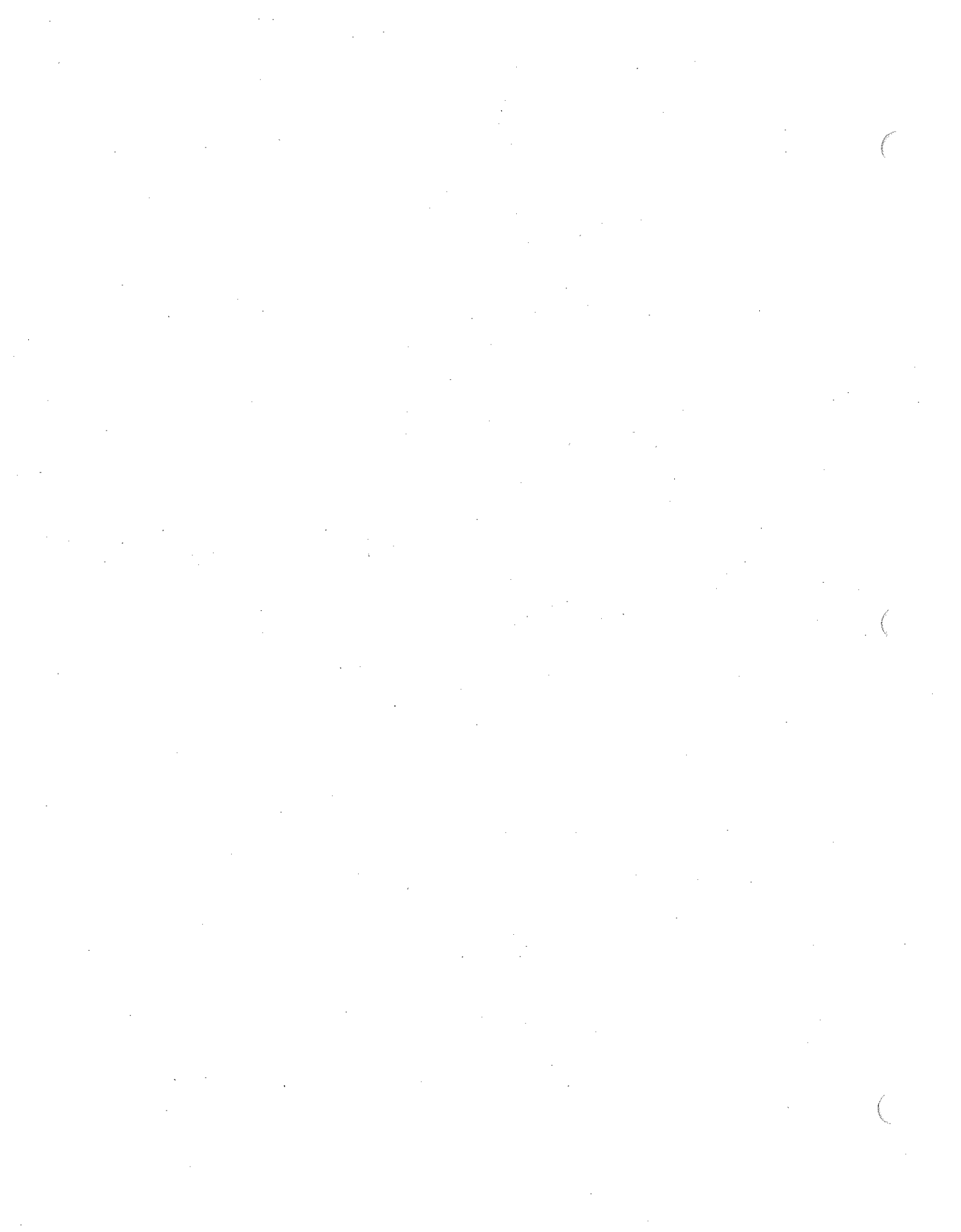
Dear City Commission,

Due to the Navy's request that this Task Order be completed by 24 April 2012 to enable repairs to be completed by 1 September in support of a Navy Fleet Exercise, I am authorizing that this task order be approved on this date. This work shall be in concurrence with the In-Kind Project Approval Letter dated 22 March 2012 and the attached Executive Summary.

Sincerely,

A handwritten signature in cursive script, appearing to read "J Scholl".

Jim Scholl
City Manager



TASK ORDER 5-12 PORTS

ENGINEERING SERVICES FOR THE EVALUATION, TESTING AND STATEMENT OF WORK FOR MAINTENANCE AND REPAIRS OF THE NAVY MOLE ELECTRICAL DISTRIBUTION SYSTEM

This TASK ORDER 5-12 PORTS is issued under the terms and conditions of the MASTER AGREEMENT TO FURNISH GENERAL ENGINEERING SERVICES TO THE CITY OF KEY WEST ("AGREEMENT") between the City of Key West ("CITY") and CH2M HILL Engineers, Inc. ("ENGINEER") executed on September 18, 2007, which is incorporated herein by this reference.

A. SCOPE OF SERVICES

Specific services which the ENGINEER agrees to furnish are summarized on the attached statement entitled TASK ORDER 5-12 PORTS "SCOPE OF SERVICES." The "Scope of Services" defines the work effort anticipated for the Task Order. This Task Order, when executed, shall be incorporated in and shall become an integral part of the September 18, 2007, Master Agreement.

B. TIME OF COMPLETION

Work under this Task Order will begin immediately following acceptance and completed expeditiously subject to coordination with the City of Key West staff. Work may be performed at any time as requested by the CITY within 12 months after the date of execution of this Task Order, at which time the Task Order will expire.

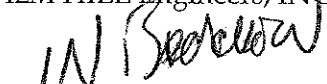
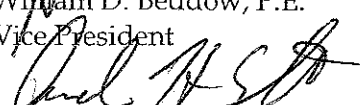
C. COMPENSATION

Compensation for labor portion of TASK ORDER 5-12 PORTS, Task A will be on a lump sum fee basis as stipulated in Article 2, Paragraph 2.1 of the AGREEMENT. Compensation for all expenses will be on a Cost Reimbursable-Per Diem basis as stipulated in Article 2, Paragraph 2.2 of the AGREEMENT. The estimated compensation is shown on the attached statement entitled TASK ORDER 5-12 PORTS COMPENSATION.


D. ACCEPTANCE

By signature, the parties each accept the provisions of this TASK ORDER 5-12 PORTS, and authorize the ENGINEER to proceed at the direction of the CITY's representative in accordance with the "SCOPE OF SERVICES." Start date for this project will be no later than ten (10) days after execution of this authorization.

For CH2M HILL Engineers, INC.

By: 
William D. Beddow, P.E.
Vice President

Andrew H. Smyth, P.E.
Key West Office Manager

For CITY OF KEY WEST

By: 
Jim Scholl
City Manager

Dated the 26TH day of MARCH, 2012

ATTEST: 



TASK ORDER 5-12 PORTS
**ENGINEERING SERVICES FOR THE EVALUATION,
TESTING AND STATEMENT OF WORK FOR
MAINTENANCE AND REPAIRS OF THE NAVY MOLE
ELECTRICAL DISTRIBUTION SERVICES**

SCOPE OF SERVICES

Project Description

The City of Key West (CITY) is working with the Navy to repair the existing electrical services on at the Mole Pier. The Navy has performed a visual inspection of the four (4) existing 13.8 kV to 480 V unit substations with corresponding switchgear that are used to provide shore power to ships berthed at the Mole Pier. The report identified that all electrical equipment is showing signs of significant deterioration due to the high salt environment. This equipment is further described in the design drawings (Exhibit A) navy drawings contract number N62427-03-C-0154 sheets E-1 through E-20A and as further described in field report dated February 2012 (Exhibit B)

The Navy is scheduling the arrival of a large number of Navy vessels planned to be berthed at the Mole Pier in September of this year. The Navy, in conjunction with the CITY has a mutual goal of making the required maintenance, repair and/or replacement to the existing equipment prior to the vessels arriving.

Due to the accelerated schedule and limited time to accomplish the repairs, the CITY has requested that the ENGINEER provide the services required to prepare a "statement of work" that will be utilized by the CITY and Navy to bid and construct the improvements.

Purpose

The CITY has requested that the ENGINEER provide engineering services for the evaluation, testing and preparation of statement of work for the Mole Pier electrical maintenance and repairs.

Scope of Services

The scope of services provided below addresses the work to be completed for the project. The scope of work for this project will result in the following deliverables:

- Evaluation and testing of the existing electrical equipment
- Provide an engineer's statement of probable construction costs.
- Prepare Statement of Work for recommended repairs

Task A – Evaluation, Testing and Statement of Work

The Engineer will provide data collection, field investigations, testing and evaluations sufficient to provide a detailed statement of work to be used to construct the electrical repairs at the Mole Pier.

A.1 Field Assessment

The Engineer will visit the site to gather existing data, evaluate, document and photograph the existing electrical equipment and current condition. During the site visit the Engineer will obtain existing data, including record drawings and manufacturers information use in developing the standards for the Statement of work.

Additionally the engineer will determine the amount of electrical testing required and will develop a scope of work for maintenance, repair and testing to be used in Task A.2.

A.2 Electrical Maintenance, Repair and Testing

The Engineer shall retain services of a InterNational Electrical Testing Association (NETA) certified technician(s) to perform maintenance, repair, and testing services on the existing equipment according to ANSI/NETA 2011 Standard for Maintenance Testing Specifications.

The testing services will be summarized in a report which will include equipment suggested for replacement or repair and equipment which may be retained in current condition. The testing report will also confirm the level of effort and the amount of repair/replacement of materials that will be included in the Statement of Work.

The Engineer and certified technician will prepare an evaluation report documenting the results of the maintenance, repairs, and testing required to bring entire electrical shore power on Mole pier up to 100% operation by August 31, 2012. The report will include a discussion of field procedures, test data, and a bill of materials for equipment requiring replacement.

Based on the information obtained in the report and the forthcoming modified statement of work the ENGINEER will finalize the results and recommendations for repair and replacement.

An allowance of \$20,000 is included as part of this task to cover the cost of retaining a NETA certified technician.

The equipment to be evaluated and tested:

1. Six (6) S&C, SF-6, 15 kV rated switches
2. Four Unit Substations – each unit substation includes:
 - a. Oil Filled Transformer
 - b. 480 Volt Cutler Hammer Circuit Breakers, CTs, relays, and control circuitry
 - c. 15 kV cable from SF-6 switch to each termination cabinet of each unit substation

Deliverables

- Four (4) copies of the testing report.

A.3 Statement of Work

During this subtask, the ENGINEER will prepare the Statement of Work for the Navy and City to utilize for procuring construction services.

Specific work activities in this task are identified below:

- Draft preliminary Statement of work for Navy/City review;
 - Develop technical information required for the replacement and repair of the existing electrical equipment.
 - Prepare/modify existing drawings with photo references for use with the construction package
- Prepare engineer's statement of probable construction costs.
- Conduct a review meeting and incorporate review comments from City and Navy into design documents, and submit final Statement of Work to the CITY

Deliverables

- Electronic copies: Draft Statement of Work
- Two (2) copies: Engineers probable construction cost estimate
- Eight (8) copies: Final Statement of Work, including drawings and technical information and two (2) CD's in PDF format.

Assumptions

The following assumptions were used in the development of this Task Order

- The Configuration of connection existing at the MOLE pier for water, sewer and electrical are compatible with the vessels which will moor at the existing MOLE Piers
- Bid phase and construction phase services are not included in this scope of work.
- No permits are required for the proposed work. Any local permits required will be obtained by awarded construction contractor.
- Electrical equipment can be de-energized during evaluations and testing tasks.
- No work will be completed on the existing water and sewer utilities.
- Work on this entire project, including all maintenance, repairs and testing will be completed by August 31, 2012. This task order shall be completed and delivered by May 4, 2012.
- Meetings will be held in Key West and attended by up to two (2) consultant's staff, additional consultants staff may attend via conference call.
- Consultants and City's QC reviews will occur concurrently in order to meet schedule.
- The design will be based on the federal, state and local codes and standards in effect at the start of the project. Any changes in these codes may necessitate a change in scope.

- The Statement of Work documents will be prepared for a single construction contract.
- It will be assumed that all projects will be located in City/Navy owned property.
- The City will coordinate and assist in all Navy involvement and Engineers site visits.
- Bid phase services will be completed by City/Navy.
- Any labor and expenses required to address construction claims, unforeseen subsurface considerations or additional construction time requested by the CONTRACTOR or OWNER will be considered as "Additional Services".

Obligations of the CITY

To assist meeting schedule and budget estimates contained in this proposal, the CITY will provide the following:

- The CITY will provide available drawings and manufacturer's information for electrical, water and wastewater utilities.
- Prompt review and comment on all deliverables. Review comments shall be submitted back to the Consultant within one week of deliverable.
- Facilitate access to any required facilities.
- Attendance of key personnel at meeting as requested.

Additional Services

The ENGINEER will, as directed, provide additional services that are related to the project but not included within this Scope of Services. These and other services can be provided, if desired by the CITY, as an amendment to the Task Order. Work will begin for the Additional Services after receipt of a written notice to proceed from the CITY. Additional services may include, but are not limited to, the following:

- Additional design services if requested by the City
- Permitting phase services
- Bid Phase Services
- Procurement Services
- Construction Phase Services

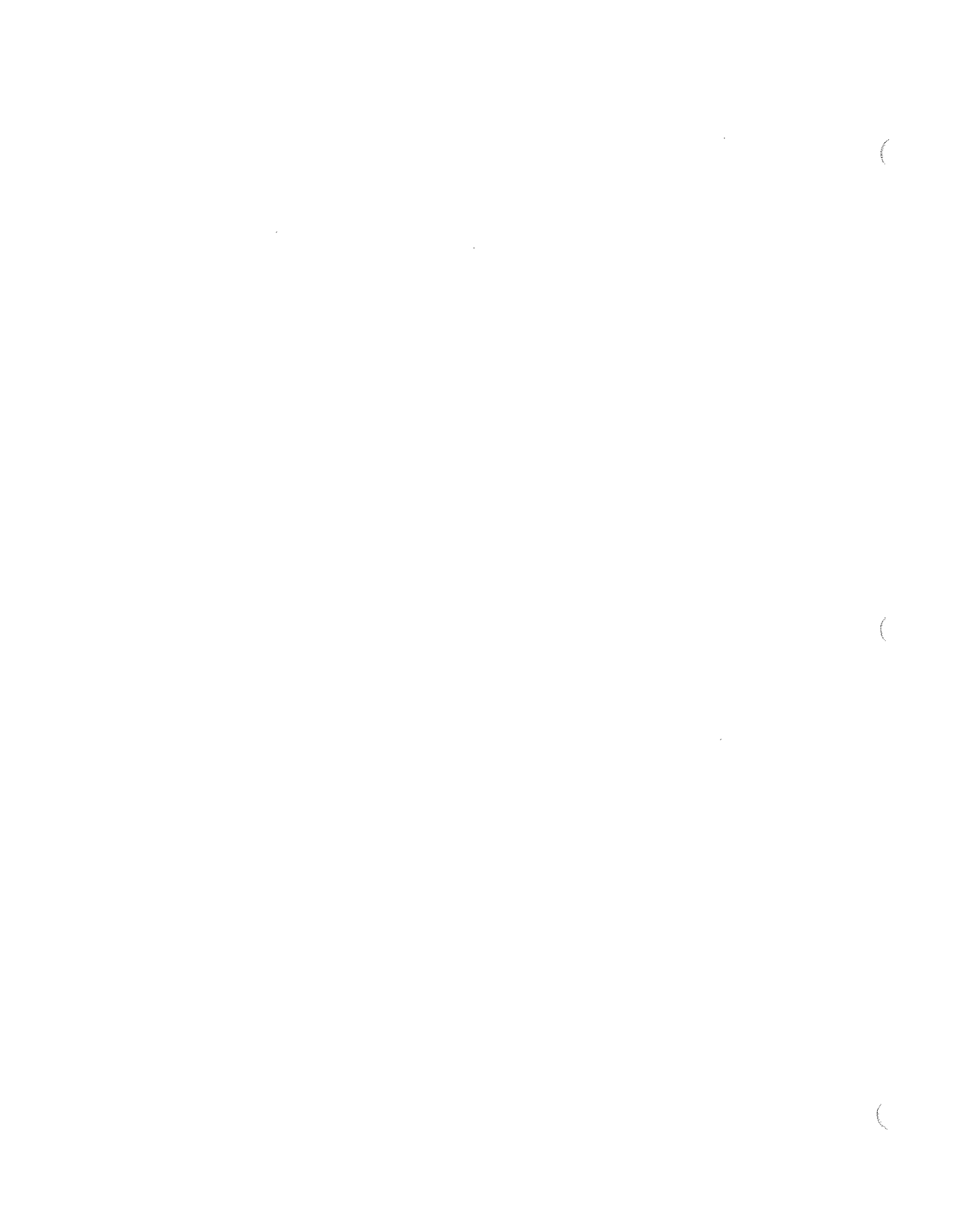
Compensation

The estimated compensation for TASK ORDER 5-12 PORTS is shown on Attachment A entitled TASK ORDER 5-12 PORTS, COMPENSATION.

Completion Dates

The proposed completion dates for the tasks are as follows:

Site Visit	2 weeks after notice to proceed
Draft Statement of Work and Testing Scope	1 week after site visit
Electrical Testing and Cleaning	TBD
Submit Final Statement of Work	2 weeks after receipt of City draft review comments



Attachment A
TASK ORDER 5-12 PORTS COMPENSATION

TASK ORDER 5-12 PORTS COMPENSATION

**ENGINEERING SERVICES FOR THE EVALUATION, TESTING AND STATEMENT OF WORK FOR
MAINTENANCE AND REPAIRS OF THE NAVY MOLE ELECTRICAL DISTRIBUTION SYSTEM**

Task	Hours	Labor	Expenses	Total Cost
Task A - Evaluation, Testing and Statement of Work	207	\$27,150	\$22,200	\$49,350
Total	207	\$27,150	\$22,200	\$49,350

COMPENSATION BREAKDOWN

Task Order 5-12 PORTS

TASK NO.	TASK DESCRIPTION	HOURLY RATE	TOTAL HOURS	LABOR	EXPENSES	TOTAL COST
A	Evaluation, Testing, SOW					
	Principal PM/Principal Technologist	\$172.00	22	\$3,784		\$3,784
	Senior Technologist/Senior PM	\$158.00	45	\$7,110		\$7,110
	Senior Professional	\$148.00	76	\$11,248		\$11,248
	Project Professional	\$122.00	8	\$976		\$976
	Assoc Engineer	\$110.00	0	\$0		\$0
	Tech 4	\$ 93.00	16	\$1,488		\$1,488
	Specification Processor	\$ 84.00	8	\$672		\$672
	Senior Project Assistant	\$ 63.00	14	\$882		\$882
	Clerical	\$ 55.00	18	\$990		\$990
	(2) - 2 Day trip to KWF				\$2,000	\$2,000
	Electrical Testing Sub Allowance				\$20,000	\$20,000
	Printing/Reprographics/Shipping				\$200	\$200
	Evaluation, Testing, SOW SUBTOTAL		207	\$27,150	\$22,200	\$49,350
PROJECT TOTALS						
	TOTAL HOURS		207			
	TOTAL FEE ESTIMATE			\$27,150	\$22,200	\$49,350
	TO 5-12 PORTS TOTAL		207	\$27,150	\$22,200	\$49,350

Exhibit A

NAVY DRAWINGS CONTRACT NO. N62427-03-C-0154

SHEETS E-1 THROUGH E-20A



DESIGNED BY	
CHECKED BY	
DATE	
PROJECT NO.	
SHEET NO.	
TOTAL SHEETS	
URSI Group, Inc.	

KEY WEST, FLORIDA

TRUMAN HARBOR REPAIRS

ELECTRICAL LOCATION PLAN

NAVAL AIR FACILITY

Southern Division

Naval Facilities Engineering Command

90% SUBMITTAL

17 MARCH 2003

REVISION DATE

NO. 1

NO. 2

NO. 3

NO. 4

NO. 5

NO. 6

NO. 7

NO. 8

NO. 9

NO. 10

NO. 11

NO. 12

NO. 13

NO. 14

NO. 15

NO. 16

NO. 17

NO. 18

NO. 19

NO. 20

NO. 21

NO. 22

NO. 23

NO. 24

NO. 25

NO. 26

NO. 27

NO. 28

NO. 29

NO. 30

NO. 31

NO. 32

NO. 33

NO. 34

NO. 35

NO. 36

NO. 37

NO. 38

NO. 39

NO. 40

NO. 41

NO. 42

NO. 43

NO. 44

NO. 45

NO. 46

NO. 47

NO. 48

NO. 49

NO. 50

NO. 51

NO. 52

NO. 53

NO. 54

NO. 55

NO. 56

NO. 57

NO. 58

NO. 59

NO. 60

NO. 61

NO. 62

NO. 63

NO. 64

NO. 65

NO. 66

NO. 67

NO. 68

NO. 69

NO. 70

NO. 71

NO. 72

NO. 73

NO. 74

NO. 75

NO. 76

NO. 77

NO. 78

NO. 79

NO. 80

NO. 81

NO. 82

NO. 83

NO. 84

NO. 85

NO. 86

NO. 87

NO. 88

NO. 89

NO. 90

NO. 91

NO. 92

NO. 93

NO. 94

NO. 95

NO. 96

NO. 97

NO. 98

NO. 99

NO. 100

NO. 101

NO. 102

NO. 103

NO. 104

NO. 105

NO. 106

NO. 107

NO. 108

NO. 109

NO. 110

NO. 111

NO. 112

NO. 113

NO. 114

NO. 115

NO. 116

NO. 117

NO. 118

NO. 119

NO. 120

NO. 121

NO. 122

NO. 123

NO. 124

NO. 125

NO. 126

NO. 127

NO. 128

NO. 129

NO. 130

NO. 131

NO. 132

NO. 133

NO. 134

NO. 135

NO. 136

NO. 137

NO. 138

NO. 139

NO. 140

NO. 141

NO. 142

NO. 143

NO. 144

NO. 145

NO. 146

NO. 147

NO. 148

NO. 149

NO. 150

NO. 151

NO. 152

NO. 153

NO. 154

NO. 155

NO. 156

NO. 157

NO. 158

NO. 159

NO. 160

NO. 161

NO. 162

NO. 163

NO. 164

NO. 165

NO. 166

NO. 167

NO. 168

NO. 169

NO. 170

NO. 171

NO. 172

NO. 173

NO. 174

NO. 175

NO. 176

NO. 177

NO. 178

NO. 179

NO. 180

NO. 181

NO. 182

NO. 183

NO. 184

NO. 185

NO. 186

NO. 187

NO. 188

NO. 189

NO. 190

NO. 191

NO. 192

NO. 193

NO. 194

NO. 195

NO. 196

NO. 197

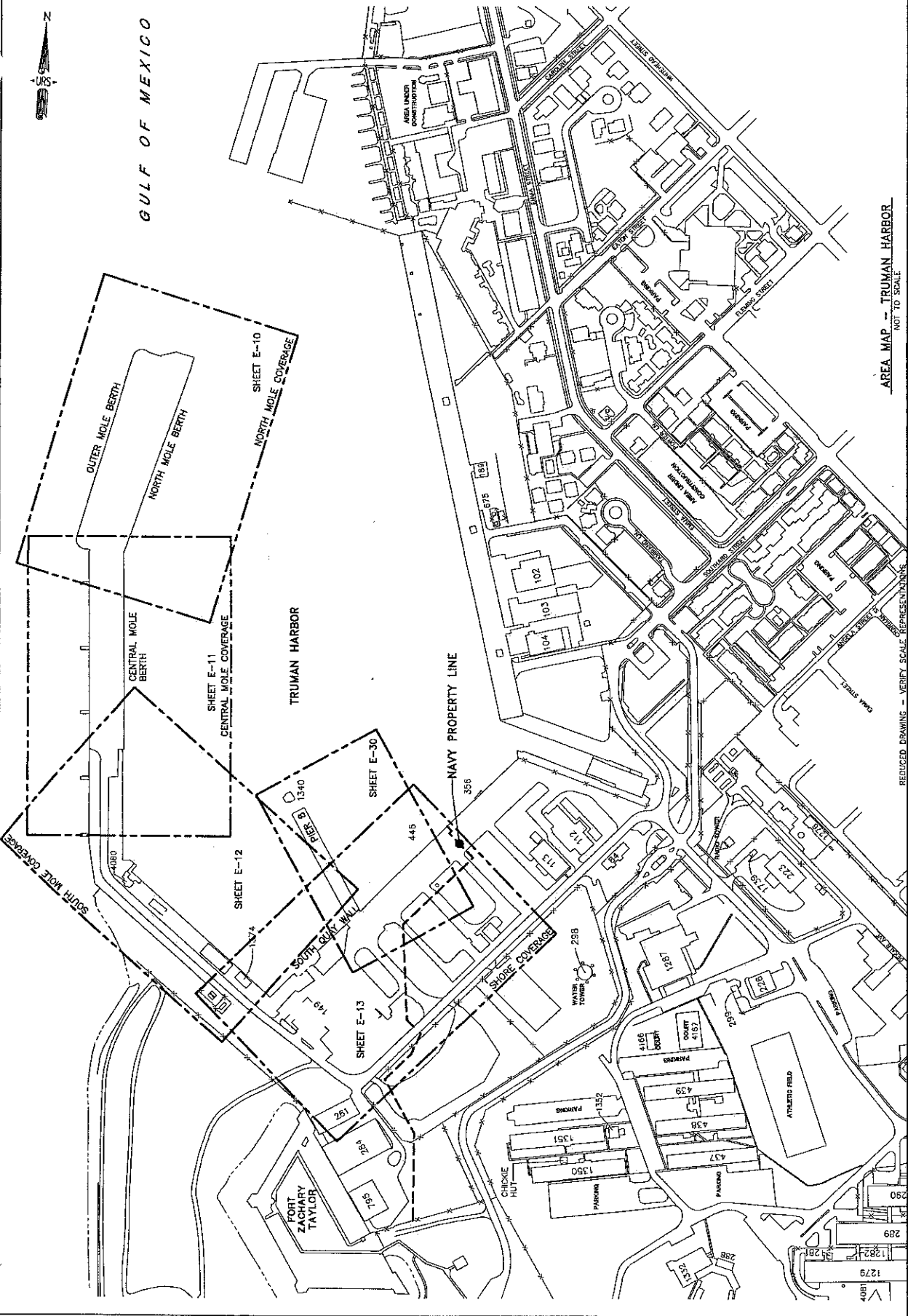
NO. 198

NO. 199

NO. 200

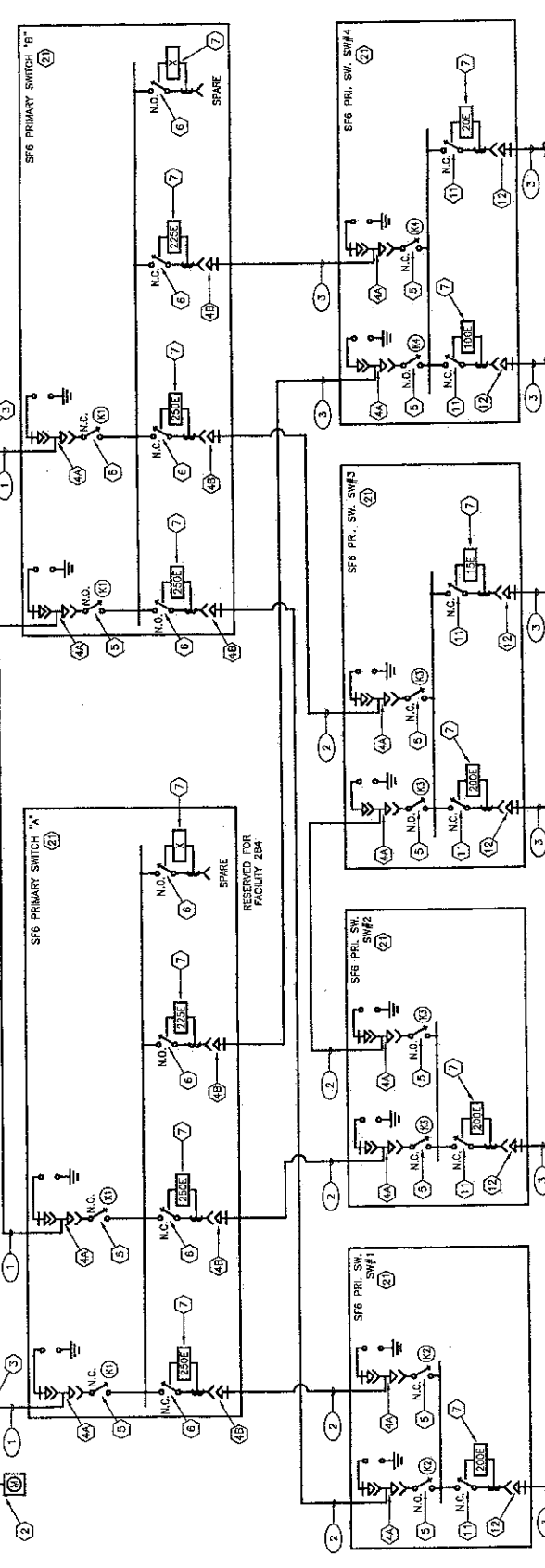
AREA MAP - TRUMAN HARBOR

NOT TO SCALE



REDUCED DRAWING - VERIFY SCALE REPRESENTATIONS

SECRET. CIRCUIT DATA FROM SOURCE AVAILABLE TO SUBMITTER ONLY. AVAILABLE TO SUBMITTER ONLY. POSITIVE SEQUENCE IMPEDANCE, Z(+)= 0.31186 + j0.468011 ZERO SEQUENCE IMPEDANCE, Z(0) = 1.03784 + j1.94828



1. ARRANGE, SCHEDULE, COORDINATE, AND PAY FOR THE SERVICES OF THE ELECTRICAL POWER UTILITY SERVICE PROVIDER TO COMPLETE THE WORK SPECIFIED TO BE PROVIDED BY THE ELECTRICAL POWER UTILITY SERVICE PROVIDER.
- KEY NOTES:**
- (1) OVERHEAD 13.8KV DISTRIBUTION UTILITY POLE WITH METER
 - (2) UTILITY POLE WITH METER
 - (3) UTILITY POLE WITH SERVICE DROPS TO BE PROVIDED BY UTILITY PROVIDER AT TOP OF UTILITY POLE FOR TERMINATION BY ELECTRICAL POWER UTILITY SERVICE PROVIDER WITH ELECTRICAL POWER UTILITY SERVICE PROVIDER. FURNISH PRIMARY CABLE TERMINATION KITS TO THE ELECTRICAL POWER UTILITY SERVICE PROVIDER FOR THEIR USE IN TERMINATING THE PRIMARY CABLES.
 - (4) 600A DEADBREAK ELBOW CONNECTOR WITH PROVISIONS FOR PICKUPBACK 200A LOADBREAK ELBOW STYLE LIGHTNING ARRESTERS (MOV) AND INSERTS.
 - (5) 600A DEADBREAK ELBOW CONNECTOR AND INSERTS.
 - (6) 600A LOADBREAK SWITCH WAY.
 - (7) PROGRAMMABLE PROTECTIVE TRIP DEVICE. PROTECTIVE DEVICES SHALL EMULATE 4-POSITION (A-LOAD, B-LOAD, A-B, A-B-LOAD) UNDER OIL SWITCH.
 - (8) MAIN PROGRAMMABLE OVERCURRENT PROTECTIVE RELAY MONITORING TOTAL CURRENT CURVES AND INTENDED SYSTEM COORDINATION.
 - (9) PROGRAMMABLE PROTECTIVE STATIC TRIP UNIT INTEGRAL TO COORDINATION.
 - (10) BRANCH PROGRAMMABLE OVERCURRENT PROTECTIVE RELAY MONITORING CURRENT CURVES AND INTENDED SYSTEM COORDINATION.
 - (11) 200A LOADBREAK PROTECTED WAY.
 - (12) 200A LOADBREAK ELBOW TERMINATORS AND INSERTS.
 - (13) 200A LOADBREAK ELBOW STYLE LIGHTNING ARRESTER.
 - (14) LOOP FEED 4-POSITION (A-LOAD, B-LOAD, A-B, A-B-LOAD) UNDER OIL SWITCH.
 - (15) 480 POWER OUTLET RECEPTACLE.
 - (16) MAIN DIGITAL MULTIMETER.
 - (17) <NOT USED>
 - (18) REMOTE POWER CONTROLLER. REFER TO DRAWING E-B FOR REMOTE CIRCUIT BREAKER CONTROL SCHEMATIC WIRING DIAGRAM.
 - (19) CURRENT TRANSFORMERS (CTS) LOCATED ON SECONDARY BUSBARS OF UNIT SUBSTATION STYLE TRANSFORMERS.
 - (20) CURRENT TRANSFORMERS AS INTEGRAL PART OF POWER CIRCUIT BREAKERS FINAL CHAMBERS TO BE DETERMINED BY POWER CIRCUIT BREAKER MANUFACTURER.
 - (21) SF6 MEDIUM VOLTAGE SWITCH. RATED MAXIMUM VOLTAGE = 17.5 KV. RATED INTERRUPTING CURRENT = 650A. SHORT-CIRCUIT INTERRUPTING CURRENT = 12KA RMS SYM.
 - (22) MOTOR OPERATED POWER CIRCUIT BREAKER.

- KEY NOTES, CONT'D:**
- (23) SUBSTATION #1 REFER TO DRAWING E-3 FOR CONTINUATION
 - (24) SUBSTATION #2 REFER TO DRAWING E-4 FOR CONTINUATION
 - (25) SUBSTATION #3 REFER TO DRAWING E-5 FOR CONTINUATION
 - (26) SUBSTATION #4 (MOLE PIER POWER CENTER PANEL) REFER TO DRAWING E-B FOR CONTINUATION
 - (27) TRANSFORMER T43 REFER TO DRAWING E-B FOR CONTINUATION
 - (28) TRANSFORMER T44 (MOLE PIER POWER CENTER PANEL) REFER TO DRAWING E-B FOR CONTINUATION
 - (29) TRANSFORMER T40 REFER TO DRAWING E-6 FOR CONTINUATION

- FEEDER LEGEND:**
- (1) (3) 750KCHIL PH. PRIMARY CABLE AND (1) #2 AWG THIN GND.
 - (2) (3) 250KCHIL PH. PRIMARY CABLE AND (1) #4 AWG THIN GND.
 - (3) (3) 1/2 AWG PH. PRIMARY CABLE AND (1) #4 AWG THIN GND.
 - (4) (6) SETS: (3) 750KCHIL PH. AND (1) 750KCHIL GND.
 - (5) (3) 750KCHIL PH. AND (1) #2 AWG GND.
 - (6) (3) 1/2 AWG PH. AND (1) 1/4 AWG GROUND SERVICE CONDUCTOR.
 - (7) (3) #4 AWG PH. AND (1) #4 AWG NEUT. AND (1) #8 AWG GND.
 - (8) (3) #4 AWG PH. AND (1) #8 AWG GND.
 - (9) (3) #4 AWG PH. AND (1) #8 AWG GND.
 - (10) (3) #4 AWG PH. AND (1) #8 AWG NEUT. AND (1) #8 AWG GND.
 - (11) (2) #8 AWG PH. AND (1) #10 AWG GND.
 - (12) (1) #10 AWG PH. AND (1) #10 AWG NEUT. AND (1) #12 AWG GND.
 - (13) (1) #12 AWG PH. AND (1) #12 AWG NEUT. AND (1) #12 AWG GND.

- GENERAL NOTES:**
- (17) <NOT USED>
 - (18) REMOTE POWER CONTROLLER. REFER TO DRAWING E-B FOR REMOTE CIRCUIT BREAKER CONTROL SCHEMATIC WIRING DIAGRAM.
 - (19) CURRENT TRANSFORMERS (CTS) LOCATED ON SECONDARY BUSBARS OF UNIT SUBSTATION STYLE TRANSFORMERS.
 - (20) CURRENT TRANSFORMERS AS INTEGRAL PART OF POWER CIRCUIT BREAKERS FINAL CHAMBERS TO BE DETERMINED BY POWER CIRCUIT BREAKER MANUFACTURER.
 - (21) SF6 MEDIUM VOLTAGE SWITCH. RATED MAXIMUM VOLTAGE = 17.5 KV. RATED INTERRUPTING CURRENT = 650A. SHORT-CIRCUIT INTERRUPTING CURRENT = 12KA RMS SYM.
 - (22) MOTOR OPERATED POWER CIRCUIT BREAKER.
- KIRK KEY INTERLOCK GROUPING.**
- (K1) INTERLOCK SWITCHES SO THAT AT LEAST ONE OF THE FOUR PRIMARY SWITCHES ARE OPEN AT ANY MOMENT IN TIME.
 - (K2) INTERLOCK SWITCHES SO THAT AT LEAST ONE OF THE TWO LINESIDE SWITCHES ARE OPEN AT ANY MOMENT IN TIME.
 - (K3) SAME AS GROUPING 1 ABOVE.
 - (K4) SAME AS GROUPING 2 ABOVE.

CT RATINGS:

CT RATIO	RELAY CLASS	RF	METERING CLASS
400/5	C100	4.0	0.3 THRU B-0.2
2000/5	---	1.5	0.3 THRU B-1.0
3000/5	---	1.5	0.3 THRU B-1.0
5000/5	CR00	1.5	0.3 THRU B-1.0

REDUCED DRAWING - VERIFY SCALE REPRESENTATIONS. E-2

REVISIONS	DATE	BY	CHKD	APP'D

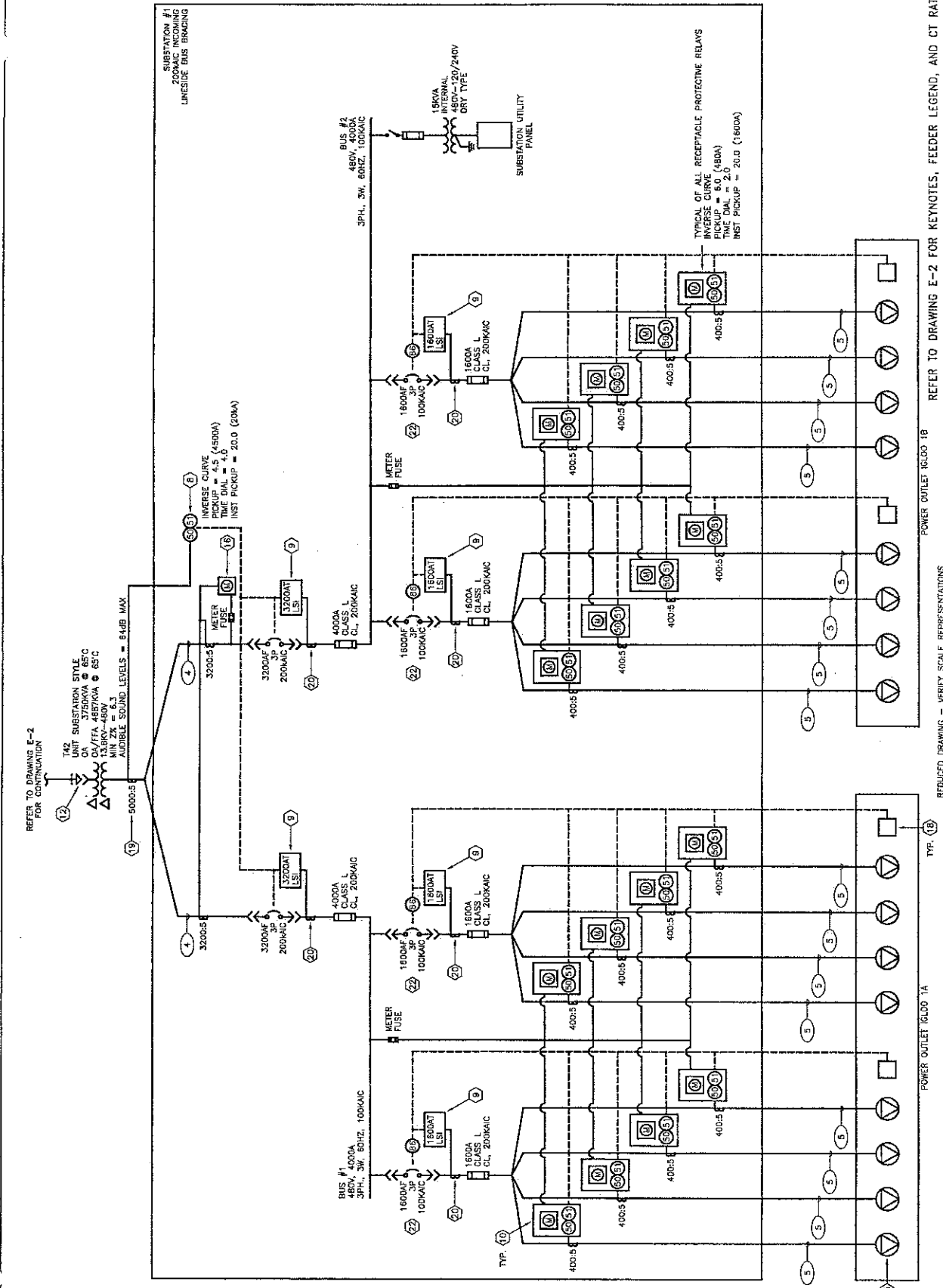
KEY WEST, FLORIDA
 TRUMAN HARBOR REPAIRS
 SECONDARY ONE LINE DIAGRAM - SUBSTATION #1

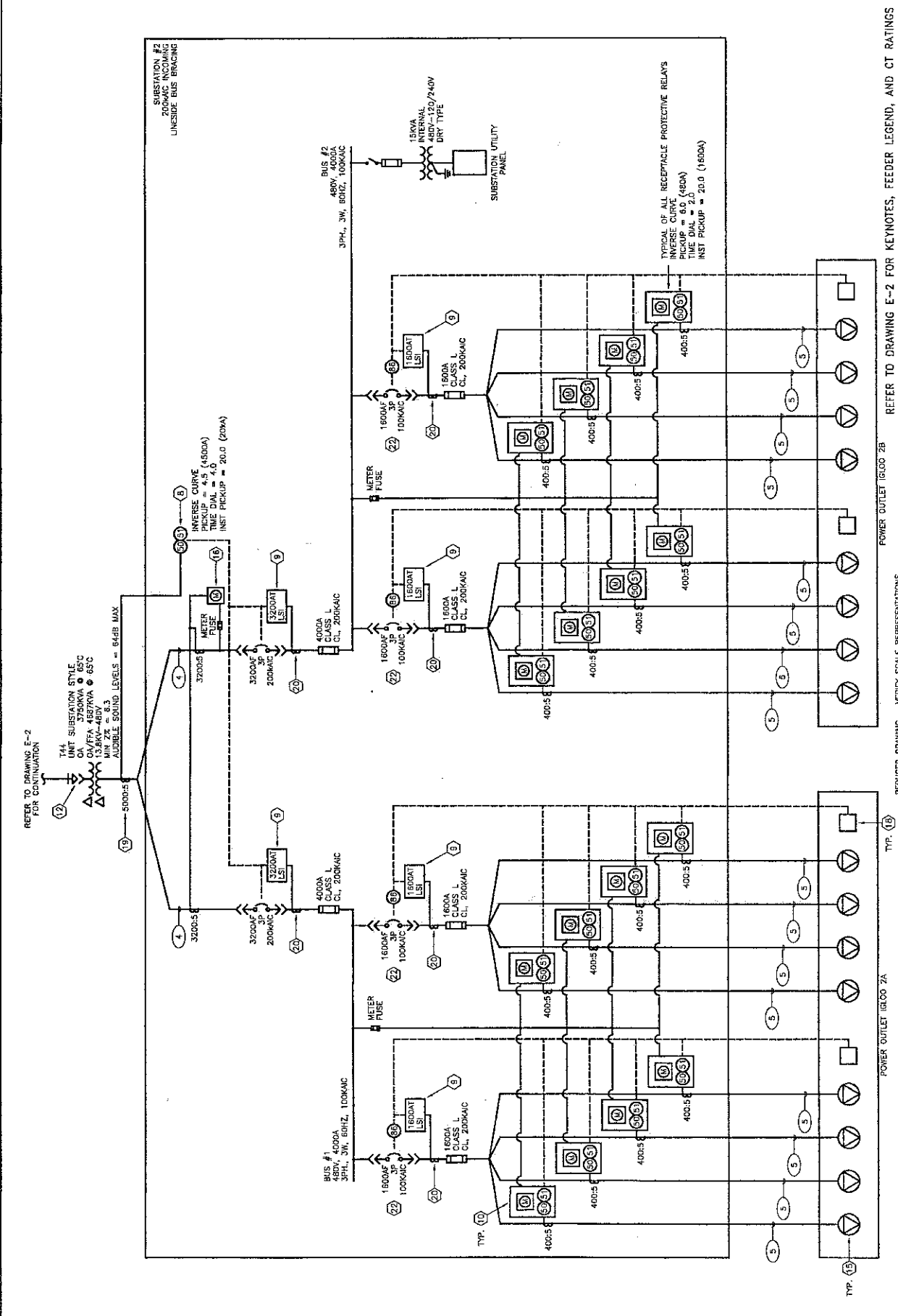
NAVY FACILITIES ENGINEERING COMMAND
 Southern Division
 Building, South Docking

90% SUBMITTAL
 17 MARCH 2003

RECORD DRAWING DATE:	
CODE LG. NO.:	
DRAWING SIZE:	
DESIGNER:	
CHECKER:	
CONTRACT NO.:	
PROJECT NO.:	
SCALE:	

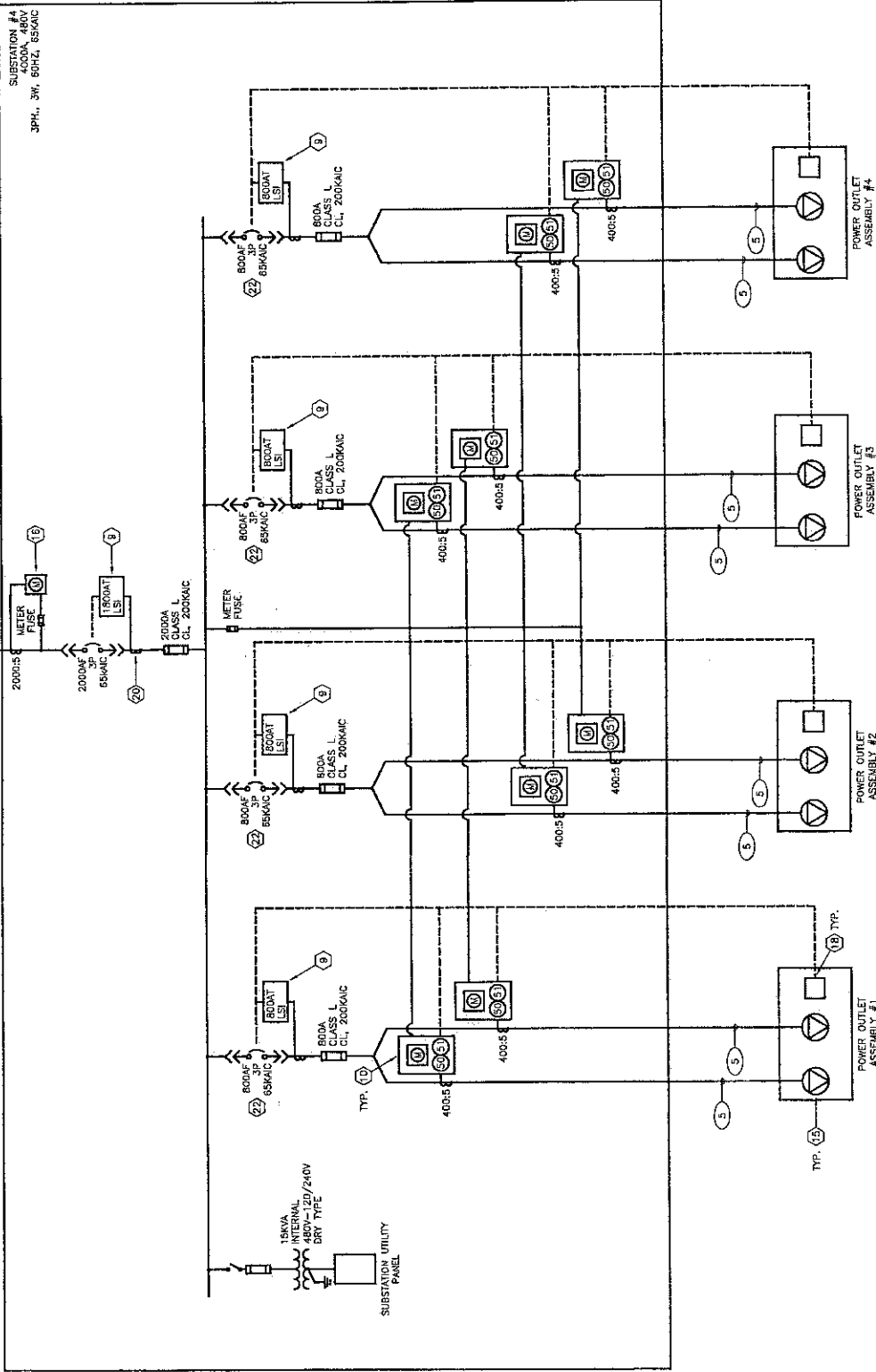
E-3





REFER TO DRAWING E-2 FOR CONTINUATION

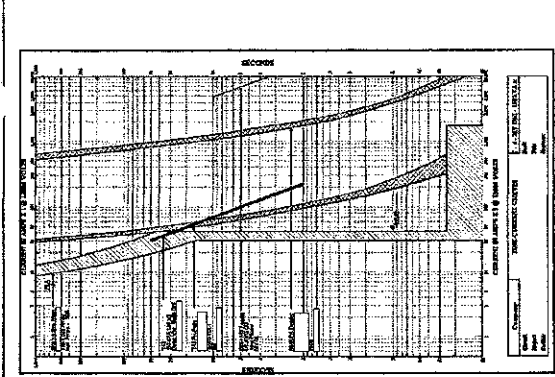
T42 UNIT SUBSTATION STYLE
 1500KVA @ 55°C
 DA/FA 1725KVA @ 55°C
 MIN. 21-150-132
 AUDIBLE SOUND LEVELS - 61DB MAX



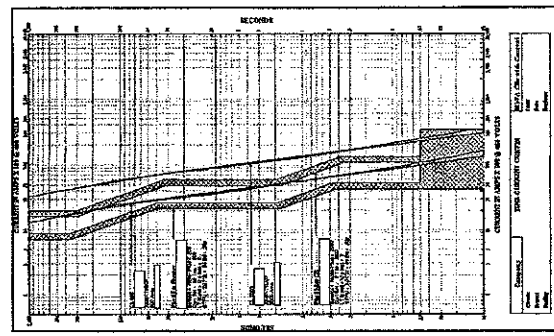
REDUCED DRAWING - VERIFY SCALE REPRESENTATIONS

REFER TO DRAWING E-2 FOR KEYNOTES, FEEDER LEGEND, AND CT RATINGS

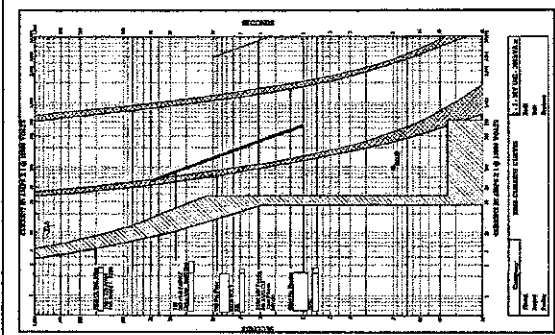
URS Group, Inc. 7850 West Century Parkway Suite 100 Fort Worth, TX 76102 Tel: 817-732-5500 Fax: 817-732-5501 www.urscorp.com	Naval Air Facility Key West, Florida TRUMAN HARBOR REPAIRS SECONDARY ONE LINE DIAGRAM - SUBSTATION #4 DTIC REFERENCE NUMBER:	Naval Facilities Engineering Command Southern Division Division South Center	90% SUBMITTAL 17 MARCH 2003	RECORD DRAWING DATE: DESIGNED BY: DRAWN BY: CHECKED BY: DATE: APPR:	SHEET OF E-6
--	--	--	--------------------------------	--	---------------------------



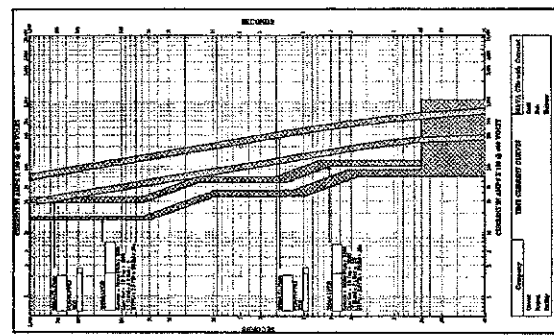
4 MV - UTIL THRU 150KVA XFMR MAIN
 E-7 NIS



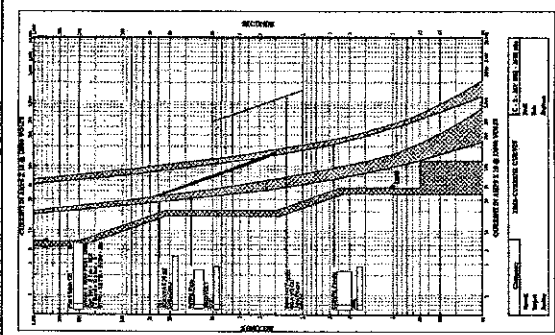
8 LV - PIER B CURRENT LIMITING FUSES
 E-7 NIS



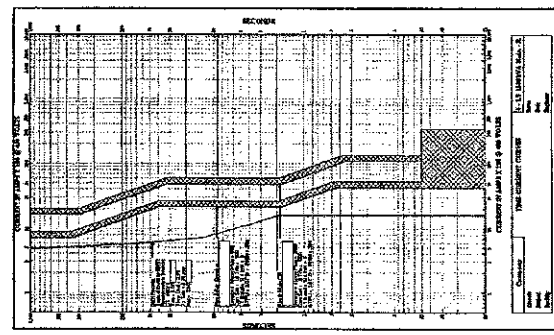
3 MV - UTIL THRU 300KVA XFMR MAIN
 E-7 NIS



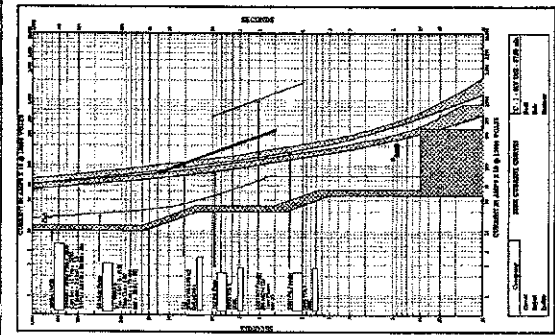
7 LV - MOLE PIER CURRENT LIMITING FUSES
 E-7 NIS



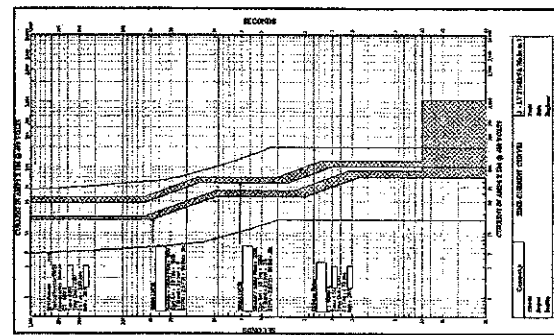
2 MV - UTIL THRU 1500KVA XFMR MAIN
 E-7 NIS



6 LV - 1500KVA XFMR MAIN THRU RECP.
 E-7 NIS



1 MV - UTIL THRU 3750KVA XFMR MAIN
 E-7 NIS



5 LV - 3750KVA XFMR MAIN THRU RECP.
 E-7 NIS

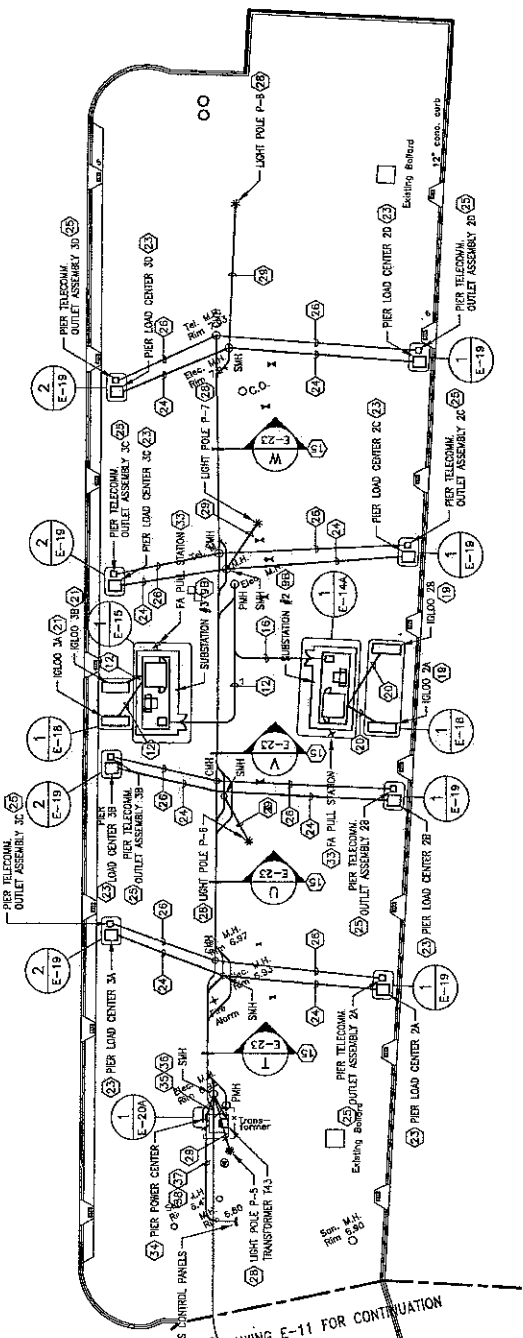
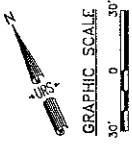
REDUCED DRAWING - VERIFY SCALE REPRESENTATIONS

DATE	17 MARCH 2003
PROJECT	TRUMAN HARBOR REPAIRS
DESIGNER	NAVY AIR FACILITY
CHECKER	KEY WEST, FLORIDA
DATE	17 MARCH 2003
PROJECT	TRUMAN HARBOR REPAIRS
DESIGNER	NAVY AIR FACILITY
CHECKER	KEY WEST, FLORIDA
DATE	17 MARCH 2003
PROJECT	TRUMAN HARBOR REPAIRS
DESIGNER	NAVY AIR FACILITY
CHECKER	KEY WEST, FLORIDA

KEY WEST, FLORIDA
 TRUMAN HARBOR REPAIRS
 ELECTRICAL PLAN NORTH MOLE

NAVY AIR FACILITY
 Key West, South Carolina
 Southern Division
 Naval Facilities Engineering Command

90% SUBMITTAL
 17 MARCH 2003
 RECORD DRAWING DATE
 SHEET NO. 17
 SHEET TOTAL 17



REFER TO DRAWING E-11 FOR CONTINUATION

REDUCED DRAWING - VERIFY SCALE REPRESENTATIONS REFER TO DRAWING E-9 FOR GENERAL AND KEY NOTES APPLICABLE TO THIS DRAWING

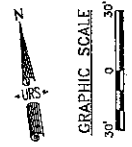
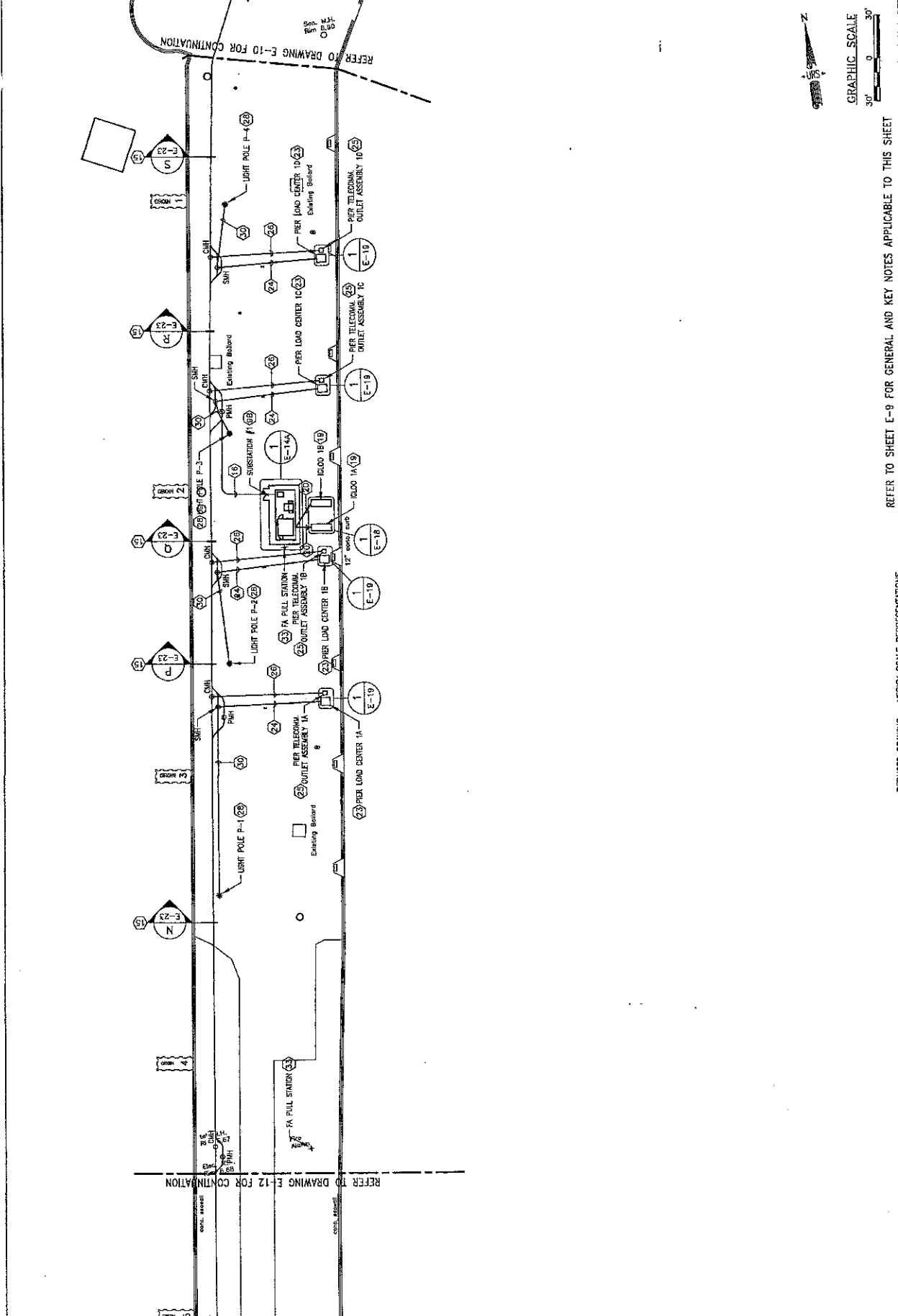
DESIGNED BY:	DATE:
CHECKED BY:	DATE:
APPROVED BY:	DATE:
PROJECT NO.:	PROJECT NAME:
SCALE:	DATE:

KEY WEST, FLORIDA
 TRUMAN HARBOR REPAIRS
 ELECTRICAL PLAN CENTRAL MOLE

Naval Air Facility
 Southern Division
 Lockheed South Carolina
 Hovell Fockitts Engineering Command

90% SUBMITTA
 17 MARCH 2002

RECORD DRAWING DATE:
 CODE NO. 100-1000
 DRAWING NO. 100-1000
 SHEET NO. 100-1000
 TOTAL SHEETS 100-1000

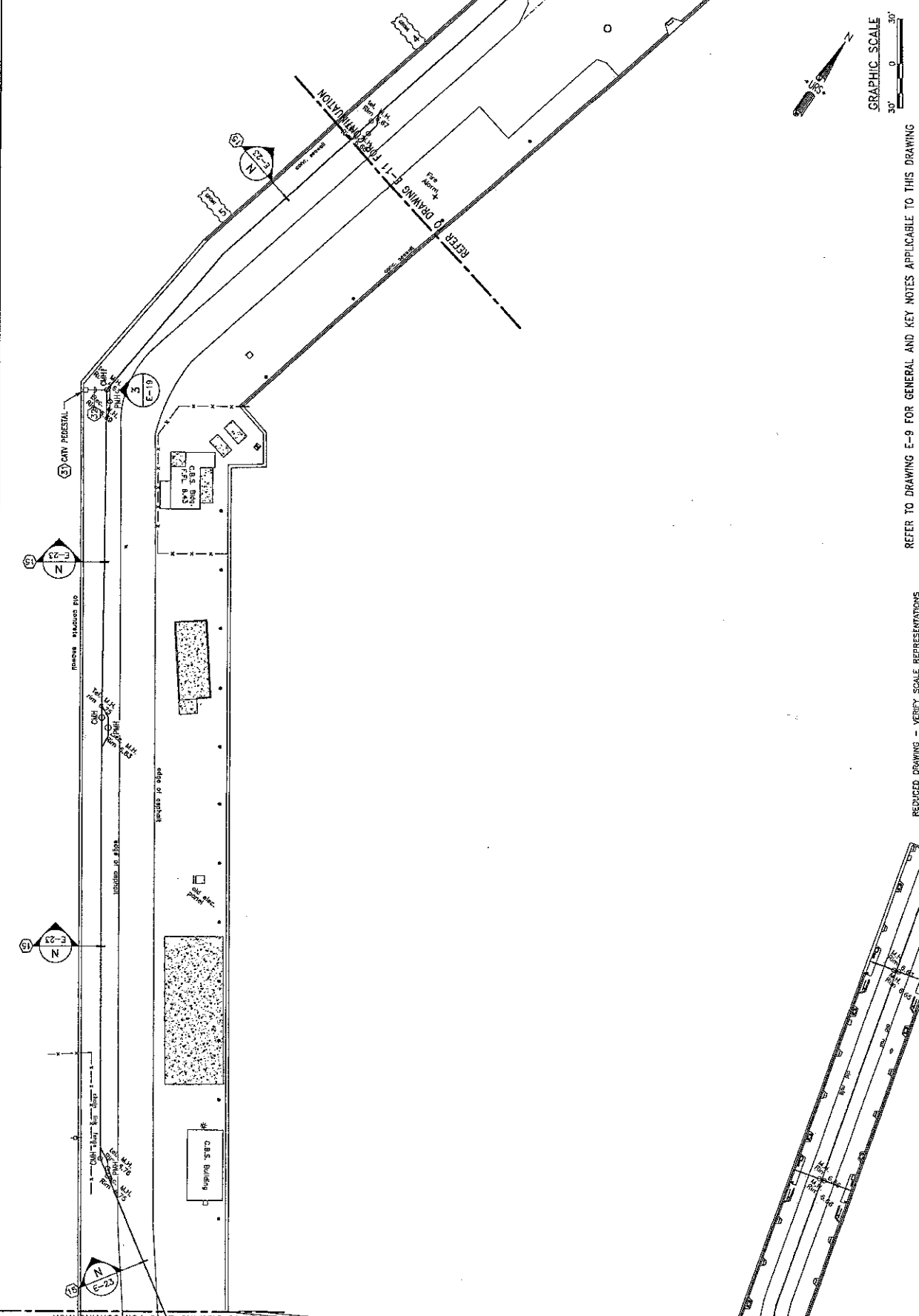


REFER TO SHEET E-9 FOR GENERAL AND KEY NOTES APPLICABLE TO THIS SHEET

REDUCED DRAWING - VERY SCALE REPRESENTATIONS

REFER TO SHEET E-10 FOR CONTINUATION

REFER TO SHEET E-12 FOR CONTINUATION



DESIGNED BY	DATE
CHECKED BY	DATE
APPROVED BY	DATE
PROJECT NO.	
DRAWING NO.	
REV. NO.	
REV. DESCRIPTION	
REV. DATE	
REV. BY	
REV. DATE	
REV. BY	
REV. DATE	
REV. BY	
REV. DATE	

KEY WEST, FLORIDA
 TRUMAN HARBOR REPAIRS
 SUBSTATIONS #1 AND #2 DETAILS - SHEET 1 OF 2

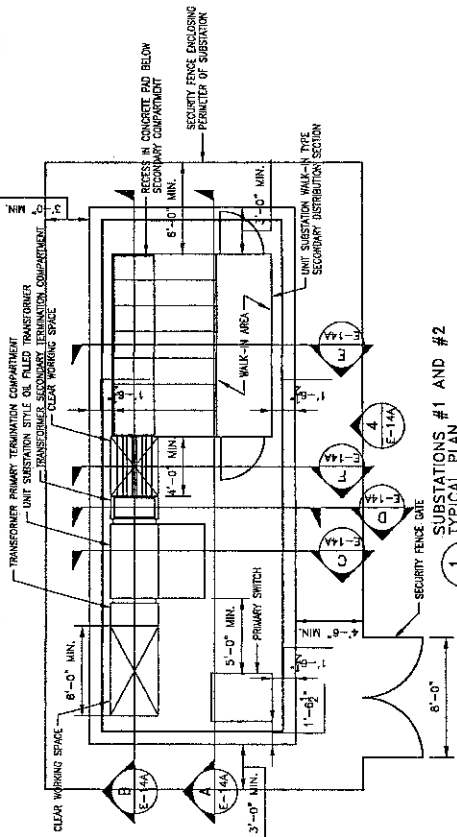
Naval Facilities Engineering Command
 Southern Division
 Christian, South Carolina

90% SUBMITTAL
 17 MARCH 2003

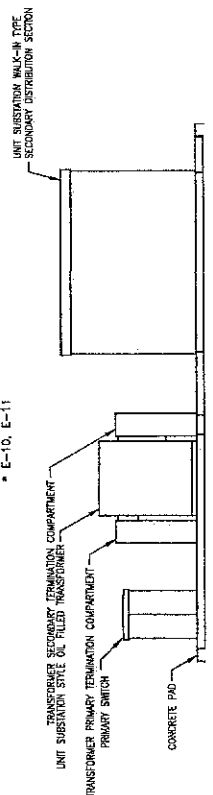
RECORD DRAWING DATE:
 CODE U.S. N.S. (SHEET)
 DRAWING SIZE:
 SHEET NO. OF TOTAL SHEETS:
 PROJECT NO. (U.S. N.S.):
 DRAWING NO. (U.S. N.S.):
 SHEET NO. OF TOTAL SHEETS:
 SHEET NO. OF TOTAL SHEETS:
 SHEET NO. OF TOTAL SHEETS:

E-14A

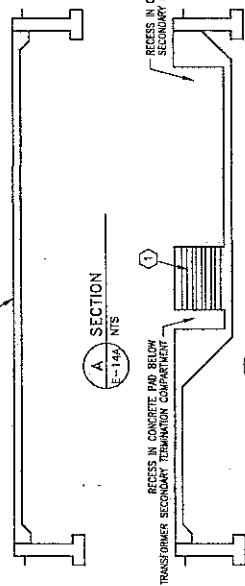
KEY NOTES:
 1 PROVIDE ONE 1" AND SIXTEEN 4" SCH. 40 PVC CONDUITS BETWEEN RECESSES. USE THE CONDUITS TO MOUNT THE TRANSFORMER AND THE TRANSFORMER MOUNTED ON THE SECONDARY BUSBARS OF THE TRANSFORMER AND THE MAIN PROTECTIVE RELAY IN THE UNIT SUBSTATION SECONDARY DISTRIBUTION SECTION.



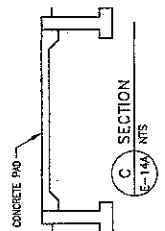
1 TYPICAL PLAN
 SUBSTATIONS #1 AND #2
 NTS
 E-10, E-11



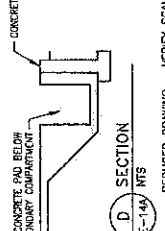
4 ELEVATION
 NTS
 E-14a



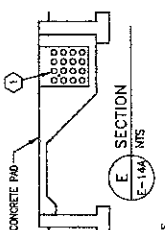
A SECTION
 NTS
 E-14a



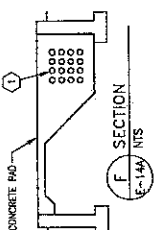
B SECTION
 NTS
 E-14a



C SECTION
 NTS
 E-14a



D SECTION
 NTS
 E-14a



E SECTION
 NTS
 E-14a



F SECTION
 NTS
 E-14a

REDUCED DRAWING - VERIFY SCALE REPRESENTATIONS

DATE	17 MARCH 2003
REVISION	
BY	
CHECKED	
DESIGNED	
APPROVED	

TRUMAN HARBOR REPAIRS
SUBSTATIONS #1 AND #2 DETAILS - SHEET 2 OF 2

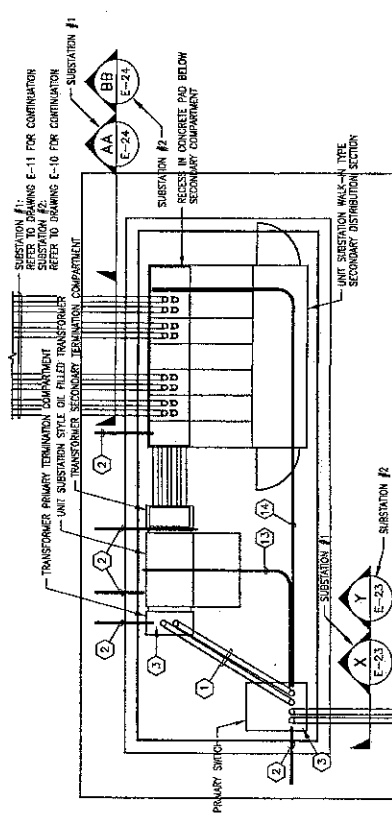
Naval Facilities Engineering Command
Southern Division
Duck Creek, South Carolina

90X SUBMITTAL
17 MARCH, 2003

E-14B

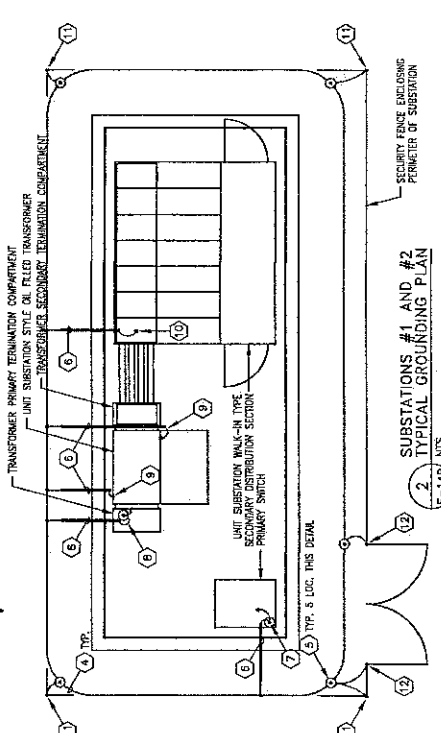
- GENERAL NOTES:**
- CUT OFF AND BUSH CONDUITS STUBBED UP UNDER PAD MOUNT EQUIPMENT 3" ABOVE CONCRETE PAD. SEAL JOINTS AROUND CONDUIT PENETRATIONS THROUGH CONCRETE PAD WITH WATER- AND OIL-RESISTANT GULCHING OR SEALANT.
 - GROUND PAD MOUNT EQUIPMENT IN ACCORDANCE WITH NFPA 70 AND IEEE C2. ALL GROUNDING MATERIALS SHALL COMPLY WITH UL 487.
 - PROVIDE HEAVY DUTY INDUSTRIAL CORROSION-RESISTANT PAD LOCKS FOR ALL PAD AND RACK MOUNT EQUIPMENT OR ENCLOSURE DOORS HAVING PROVISIONS FOR PAD LOCKING. PAD LOCKS SHALL BE NOMINAL 2" WIDE LAMINATED STEEL BODY WITH HARDENED BURR LOCKING SURFACE. CONDUIT SHALL BE 3-SPOKE PIN TUMBLER CHANDLER BALL BEARING LOCKING MECHANISM WITH PLASTIC COVER. ALL PAD LOCKS PROVIDED AS PART OF THIS PROJECT SHALL BE KEVED ALIVE.

- KEY NOTES:**
- PROVIDE TWO #4 SCH. 40 PVC CONDUITS FOR PRIMARY FEEDER TO TRANSFORMER, ONE ACTIVE AND ONE SPARE.
 - PROVIDE 1" SCH. 40 PVC CONDUIT DIRECT BURIED WITH A MINIMUM OF 24" EARTH COVER, STUBBED OUT 24" BEYOND CONCRETE PAD. USE THIS CONDUIT TO ROUTE GROUNDING CONDUCTOR BETWEEN GROUNDING ELECTRODE CONDUCTOR LOOP AND PAD MOUNT EQUIPMENT.
 - PROVIDE 1/2" DIA. 40 PVC CONDUIT SLEEVE IN CONCRETE PAD. USE SLEEVE TO INSTALL GROUND ROD.
 - PROVIDE 3/4" DIA. FINISHED COPPER GROUNDING ELECTRODE CONDUCTOR LOOP, DIRECT BURIED WITH 24" EARTH COVER AND LOCATED 30" OUTSIDE PERIMETER OF CONCRETE PAD.
 - PROVIDE 3/4" BARE STRANDED COPPER GROUNDING CONDUCTOR IN CONDUIT UP TO PAD MOUNT EQUIPMENT.
 - PROVIDE GROUND ROD THROUGH SLEEVE. DRIVE GROUND ROD UNTIL ITS TOP IS 6" BELOW FINAL GRADE.
 - PROVIDE GROUND ROD THROUGH SLEEVE. DRIVE GROUND ROD UNTIL ITS TOP PROJECTS 6" ABOVE CONCRETE PAD. BOND GROUNDING CONDUCTOR TO GROUND ROD. BOND GROUNDING CONDUCTOR BETWEEN PRIMARY SWITCH GROUND LUG AND GROUND ROD. BOND GROUNDING CONDUCTOR AND PRIMARY CABLE TERMINATION SHIELDS TO GROUND ROD.
 - PROVIDE GROUND ROD THROUGH SLEEVE. DRIVE GROUND ROD UNTIL ITS TOP PROJECTS 6" ABOVE CONCRETE PAD. PROVIDE 3/4" BARE STRANDED COPPER GROUNDING CONDUCTOR BETWEEN TRANSFORMER TANK PRIMARY COMPARTMENT GROUND LUG AND GROUND ROD. BOND GROUNDING CONDUCTORS AND PRIMARY CABLE TERMINATION SHIELDS TO GROUND ROD.
 - BOND GROUNDING CONDUCTOR TO TRANSFORMER GROUND PAD.
 - BOND GROUNDING CONDUCTOR TO UNIT SUBSTATION GROUND BUS.
 - PROVIDE #4 BARE STRANDED COPPER GROUNDING CONDUCTOR BETWEEN FENCE CORNER POST AND GROUND ROD. BOND GROUNDING CONDUCTOR TO GROUND ROD.
 - PROVIDE #4 BARE STRANDED COPPER GROUNDING CONDUCTOR BETWEEN FENCE CORNER POST AND GROUND ROD. BOND GROUNDING CONDUCTOR TO GROUND ROD. PROVIDE FIDUCIAL BRANDED COPPER BONDING JUMPER BETWEEN GATE SECTION AND GATE POST.
 - PROVIDE 1" DIA. COATED BBS CONDUIT EMPTY FOR FUTURE CONTROLS. FEED CONDUIT UP TO ABOVE CONCRETE PAD. ADJUST TO TRANSFORMER CONTROLS AREA AND CAP. STUB CONDUIT UP 3" ABOVE CONCRETE PAD IN PRIMARY SWITCH TERMINATION COMPARTMENT.
 - PROVIDE 1" DIA. COATED BBS CONDUIT EMPTY FOR FUTURE 120V AC POWER FOR CONTROLS. STUB CONDUIT UP 3" ABOVE CONCRETE PAD IN RECESS BELOW SECONDARY TERMINATION COMPARTMENT. CONDUIT UP 3" ABOVE CONCRETE PAD IN PRIMARY SWITCH TERMINATION COMPARTMENT.



1 TYPICAL UNDERGROUND CONDUIT PLAN
E-14B NTS

SUBSTATION #1:
REFER TO DRAWING E-11 FOR CONTINUATION
SUBSTATION #2:
REFER TO DRAWING E-10 FOR CONTINUATION



2 TYPICAL GROUNDING PLAN
E-14B NTS

REDUCED DRAWING - VERIFY SCALE REPRESENTATIONS

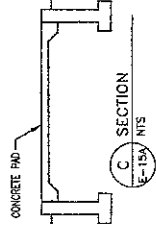
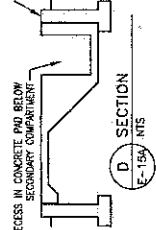
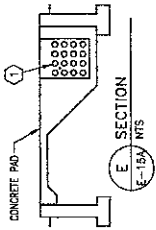
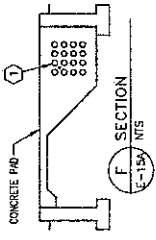
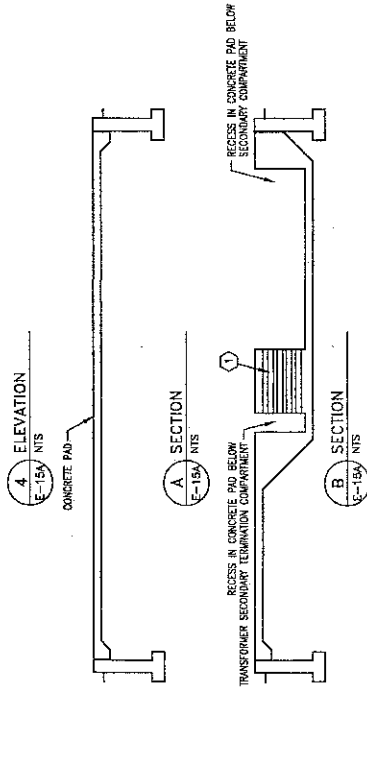
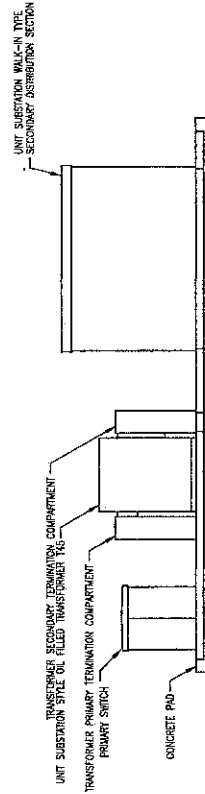
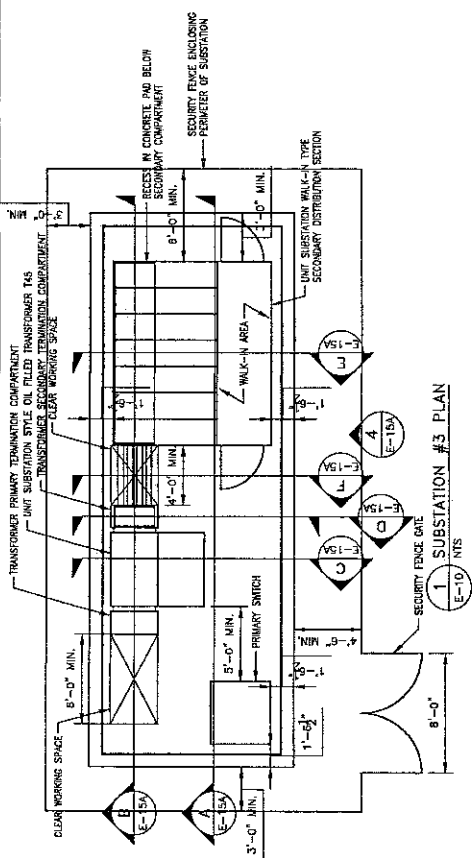
DATE	DESCRIPTION
17 MARCH 2003	90% SUBMITTAL
17 MARCH 2003	90% SUBMITTAL
17 MARCH 2003	90% SUBMITTAL
17 MARCH 2003	90% SUBMITTAL
17 MARCH 2003	90% SUBMITTAL
17 MARCH 2003	90% SUBMITTAL
17 MARCH 2003	90% SUBMITTAL
17 MARCH 2003	90% SUBMITTAL
17 MARCH 2003	90% SUBMITTAL
17 MARCH 2003	90% SUBMITTAL

KEY WEST, FLORIDA
 TRUMAN HARBOR REPAIRS
 SUBSTATION #3 DETAILS - SHEET 1 OF 2
 DRAWING REVISIONS

Naval Facilities Engineering Command
 Southern Division
 Charleston, South Carolina

90% SUBMITTAL
 17 MARCH 2003
 E-15A

KEY NOTES:
 1 PROVIDE ONE 1" AND SIXTEEN #4 SCH. 40 PVC CONDUITS BETWEEN RECESSES. USE THE
 1" CONDUIT TO ROUTE THE CURRENT TRANSFORMER WIRING BETWEEN THE CURRENT
 TRANSFORMERS MOUNTED ON THE SECONDARY BUSBARS OF THE TRANSFORMER AND THE
 MAIN PROTECTIVE RELAY IN THE UNIT SUBSTATION SECONDARY DISTRIBUTION SECTION.



REDUCED DRAWING - VERIFY SCALE REPRESENTATIONS

NO.	REV.	DESCRIPTION

KEY WEST, FLORIDA

TRUMAN HARBOR REPAIRS

SUBSTATION #3 DETAILS - SHEET 2 OF 2

Naval Facilities Engineering Command
 Southern Division
 Chief, South Division

90% SUBMITTAL
 17 MARCH 2003

RECORD DRAWING DATE:
 DRAWING DATE:
 DRAWING BY:
 CHECKED BY:
 DESIGNED BY:
 NO. 2487-03-C-0154
 SURFACE DRAINAGE R/L

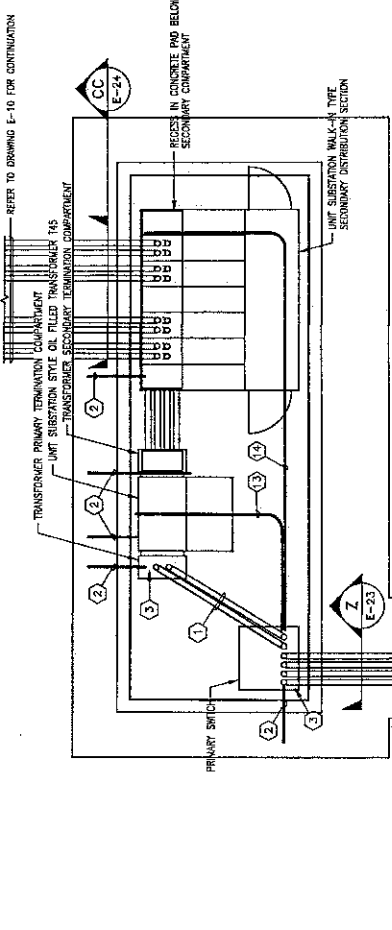
E-15B
 SHEET 2

GENERAL NOTES:

- CUT OFF AND BUSH CONCANTS STUBBED UP UNDER PAD MOUNT EQUIPMENT 3" ABOVE CONCRETE PAD. SIZE PDS AS SHOWN CONDUIT PENETRATIONS THROUGH CONCRETE PAD WITH WARE-AND-TEAR RESISTANT GASKETS ON SEQUENT.
- GROUND PAD MOUNT EQUIPMENT IN ACCORDANCE WITH NFPA 70 AND IEEE C2. ALL GROUNDING MATERIALS SHALL COMPLY WITH UL 467.
- PROVIDE HEAVY DUTY INDUSTRIAL CORROSION-RESISTANT PAD LOCKS FOR ALL PAD AND RACK MOUNT EQUIPMENT OR ENCLOSURE DOORS HAVING PROVISIONS FOR PAD LOCKING. PAD LOCKS SHALL BE NOMINAL 2" WIDE LAMINATED STEEL BODY WITH HARDENED BORON STEEL KEYS. LOCKS SHALL BE PROVIDED WITH PLASTIC CYLINDER COVER. ALL PAD LOCKS PROVIDED AS PART OF THIS PROJECT SHALL BE METAL ALK.

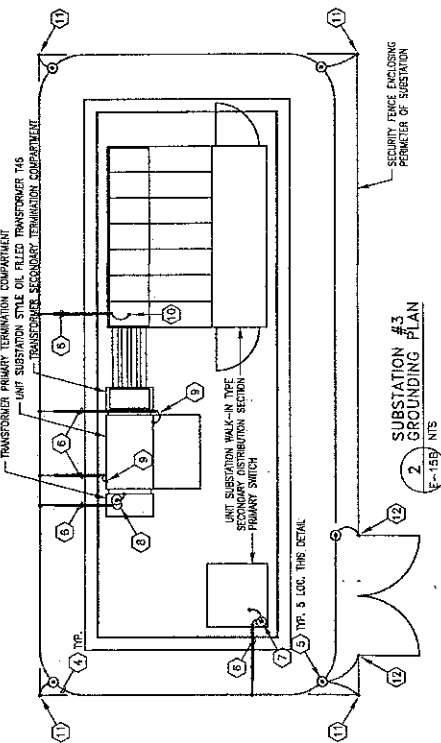
KEY NOTES:

- PROVIDE TWO (2) SCH. 40 PVC CONDUITS FOR PRIMARY FEEDER TO TRANSFORMER, ONE ACTIVE AND ONE SPARE.
- PROVIDE 1" SCH. 40 PVC CONDUIT DIRECT BURIED WITH A MINIMUM OF 24" EARTH COVER, STUBBED OUT 24" BEYOND CONCRETE PAD. USE THIS CONDUIT TO ROUTE GROUNDING CONDUCTOR BETWEEN GROUNDING ELECTRODE CONDUCTOR LOOP AND PAD MOUNT EQUIPMENT.
- PROVIDE 1/2" SCH. 40 PVC CONDUIT SLEEVE IN CONCRETE PAD. USE SLEEVE TO INSTALL GROUND ROD.
- PROVIDE 3/8" BARE STRANDED COPPER GROUNDING ELECTRODE CONDUCTOR LOOP DIRECT BURIED WITH 24" EARTH COVER AND LOCATED 30" OUTSIDE PERIMETER OF CONCRETE PAD.
- PROVIDE GROUND ROD. DRIVE GROUND ROD UNTIL ITS TOP IS 5" BELOW FINAL GRADE.
- PROVIDE 3/8" BARE STRANDED COPPER GROUNDING CONDUCTORS IN CONDUIT UP TO PAD MOUNT EQUIPMENT.
- PROVIDE GROUND ROD THROUGH SLUICE. BOND GROUND ROD UNTIL ITS TOP PROJECTS 6" ABOVE TOP OF CONCRETE PAD. PROVIDE 3/8" BARE STRANDED COPPER GROUNDING CONDUCTOR BETWEEN PRIMARY SWITCH GROUND LUG AND GROUND ROD. BOND GROUNDING CONDUCTORS AND PRIMARY CABLE TERMINATION SHELDS TO GROUND ROD.
- PROVIDE GROUND ROD THROUGH SLUICE. DRIVE GROUND ROD UNTIL ITS TOP PROJECTS 6" ABOVE TOP OF CONCRETE PAD. PROVIDE 3/8" BARE STRANDED COPPER GROUNDING CONDUCTOR BETWEEN TRANSFORMER TANK PRIMARY COMPARTMENT GROUND LUG AND GROUND ROD. BOND GROUNDING CONDUCTORS AND PRIMARY CABLE TERMINATION SHELDS TO GROUND ROD.
- BOND GROUNDING CONDUCTOR TO TRANSFORMER GROUND PAD.
- BOND GROUNDING CONDUCTOR TO UNIT SUBSTATION GROUND BUS.
- PROVIDE #4 BARE STRANDED COPPER GROUNDING CONDUCTOR BETWEEN FENCE CORNER POST AND GROUND ROD. BOND GROUNDING CONDUCTOR TO GROUND ROD.
- PROVIDE #4 BARE STRANDED COPPER GROUNDING CONDUCTOR BETWEEN FENCE GATE POST AND GROUND ROD. BOND GROUNDING CONDUCTOR TO GROUND ROD. PROVIDE FLEXIBLE BROWSED COPPER BOWING JUMPER BETWEEN GATE SECTION AND GATE POST.
- PROVIDE 1" PVC COATED RGS CONDUIT EMPTY FOR FUTURE CONTROLS. STUB CONDUIT UP 3" ABOVE CONCRETE PAD ADJACENT TO TRANSFORMER CONTROLS AREA AND CAP. STUB CONDUIT UP 3" ABOVE CONCRETE PAD IN PRIMARY SWITCH TERMINATION COMPARTMENT.
- PROVIDE 1" PVC COATED RGS CONDUIT EMPTY FOR FUTURE 120V AC POWER FOR CONTROLS. STUB CONDUIT UP 3" ABOVE CONCRETE PAD IN PRIMARY SWITCH TERMINATION COMPARTMENT. STUB CONDUIT UP 3" ABOVE CONCRETE PAD IN PRIMARY SWITCH TERMINATION COMPARTMENT.



1
 SUBSTATION #3
 UNDERGROUND CONDUIT PLAN
 E-15B/ NTS

REFER TO DRAWING E-10 FOR CONTINUATION

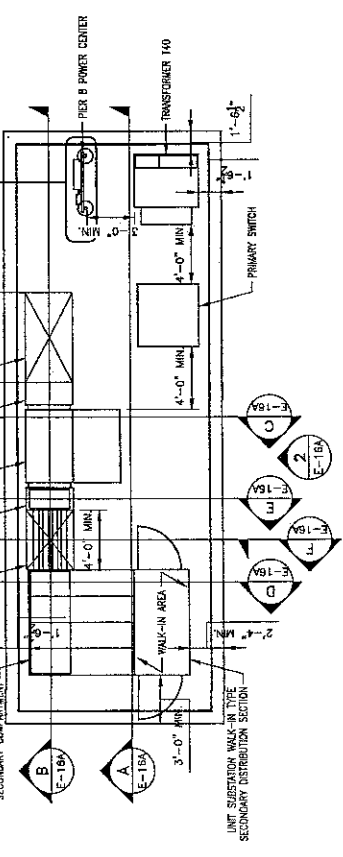


2
 SUBSTATION #3
 GROUNDING PLAN
 E-15B/ NTS

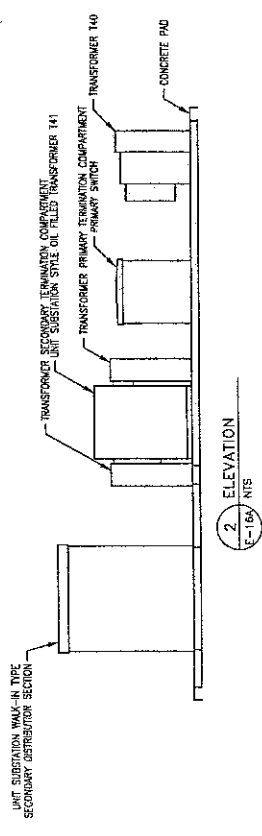
REDUCED DRAWING - VERIFY SCALE REPRESENTATIONS

KEY NOTES:

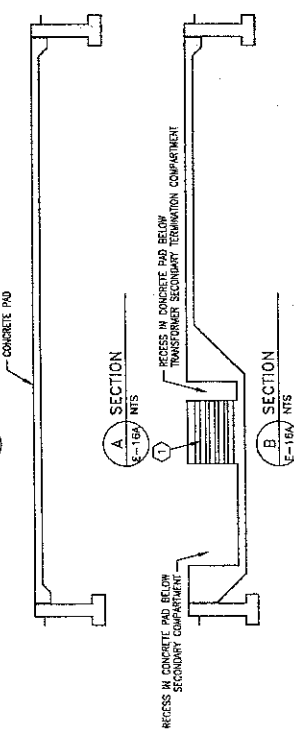
1 PROVIDE ONE 1" AND SIXTEEN 4" SCH. 40 PVC CONDUITS BETWEEN RECESSES AS SPECIFIED. USE THE CONDUIT TO ROUTE THE PRIMARY AND SECONDARY WIRING BETWEEN THE RECESSES. THE CONDUIT SHALL BE INSTALLED ABOVE THE PRIMARY TRANSFORMER AND THE MAIN PROTECTIVE RELAY IN THE UNIT SUBSTATION SECONDARY DISTRIBUTION SECTION.



1 SUBSTATION #4 PLAN
 E-13
 NTS

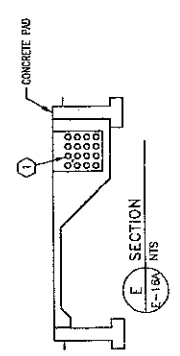


2 ELEVATION
 E-16A
 NTS



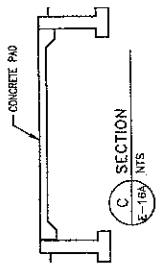
A SECTION
 E-16A
 NTS

B SECTION
 E-16A
 NTS



E SECTION
 E-16A
 NTS

F SECTION
 E-16A
 NTS



C SECTION
 E-16A
 NTS

D SECTION
 E-16A
 NTS

REDUCED DRAWING - VERY SCALE REPRESENTATIONS

DATE	DESCRIPTION	BY	CHKD
17 MAR 200	ISSUED FOR CONSTRUCTION	W. J.
17 MAR 200	REVISED

KEY WEST, FLORIDA
 TRUMAN HARBOR REPAIRS
 PRIMARY SWITCHES "A" AND "B" DETAILS

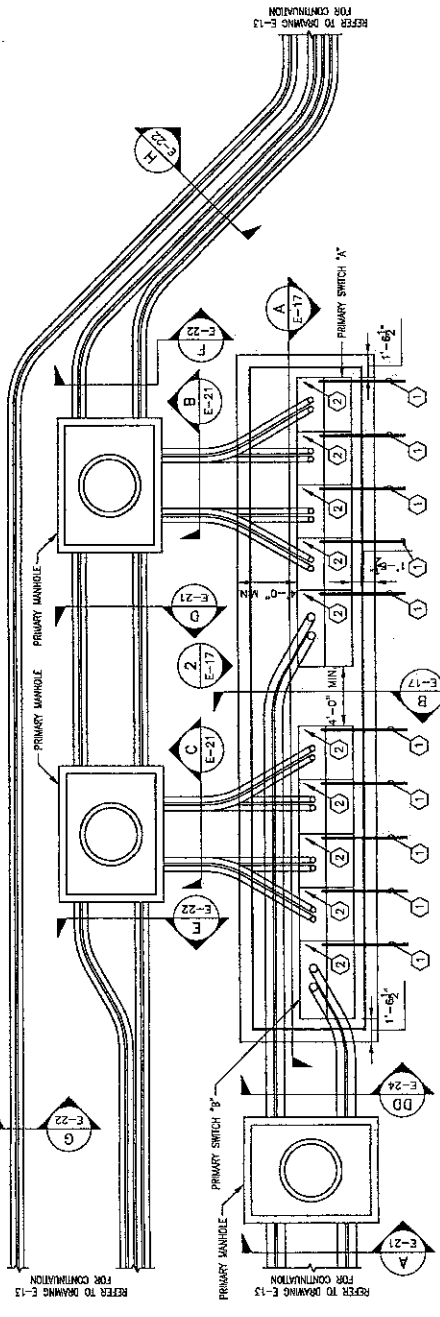
Naval Facilities Engineering Command
 Southern Division
 Charleston, South Carolina

90% SUBMITTA
 17 MARCH 200

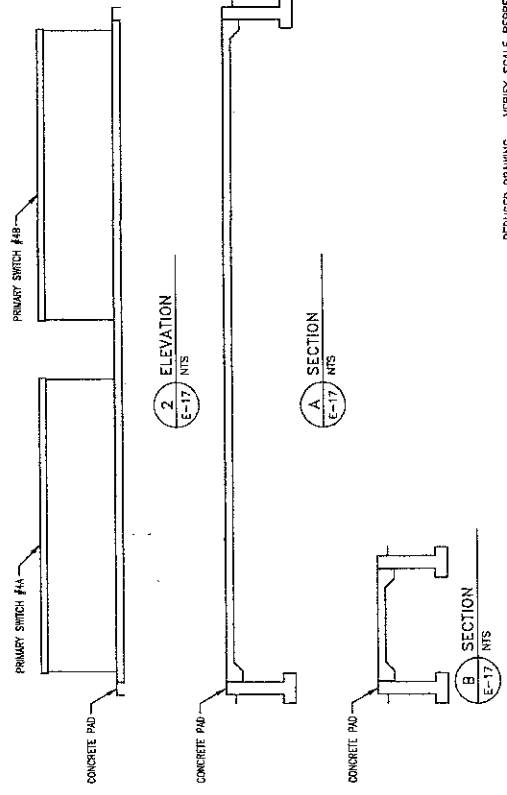
RECORD DRAWING OF
 CODE U.S. NO. 881E
 PROJECT NO. 68-03-01
 DRAWING NO. 11
 SHEET NO. 11
 DRAWING TITLE
 SHEET OF
 E-17

- GENERAL NOTES:**
- CUT SET AND BUSH CONDUITS THROUGH UP UNDER PAD MOUNT EQUIPMENT 3" ABOVE CONCRETE PAD. SEA VOIDS AROUND CONDUIT PENETRATIONS THROUGH CONCRETE PAD WITH WATER- AND OIL-RESISTANT CAULKING OR SEALANT.
 - GROUND PAD MOUNT EQUIPMENT IN ACCORDANCE WITH NFPA 70 AND IEEE C2. ALL GROUNDING MATERIALS SHALL COMPLY WITH UL 467.
 - PROVIDE HEAVY DUTY INDUSTRIAL CORROSION-RESISTANT PAD LOCKS FOR ALL PAD AND CONDUIT PENETRATIONS THROUGH CONCRETE PAD. ALL PAD LOCKS SHALL BE NOMINAL 2" WIDE LAMINATED STEEL BODY WITH HARDENED BORON ALLOY SHOCKLE, REMOVABLE/REPLACABLE 3-SPOOL PIN TUMBLER CYLINDER, BALL BEARING LOCKING MECHANISM, WITH PLASTIC CYLINDER COVER. ALL PAD LOCKS PROVIDED AS PART OF THIS PROJECT SHALL BE KEED AIDE.

- KEY NOTES:**
- PROVIDE 1" SCH. 40 PVC CONDUIT DIRECT BURIED WITH A MINIMUM OF 24" EARTH COVER, EXTENDED OUT 24" BEYOND CONCRETE PAD. USE THIS CONDUIT TO ROUTE GROUNDING CONDUCTOR BETWEEN GROUNDING ELECTRODE CONDUCTOR LOOP AND PAD MOUNT EQUIPMENT.
 - PROVIDE 1/2" SCH. 40 PVC CONDUIT SLEEVE IN CONCRETE PAD. USE SLEEVE TO INSTALL GROUND ROD.
 - PROVIDE 3/8" BARE STRANDED COPPER GROUNDING ELECTRODE CONDUCTOR LOOP DIRECT BURIED WITH 24" EARTH COVER AND LOCATED 30" OUTSIDE PERIMETER OF CONCRETE PAD.
 - PROVIDE GROUND ROD. DRIVE GROUND ROD UNTIL ITS TOP IS 6" BELOW FINAL GRADE.
 - PROVIDE 3/8" BARE STRANDED COPPER GROUNDING CONDUCTOR IN CONDUIT UP TO PAD MOUNT EQUIPMENT.
 - PROVIDE GROUND ROD THROUGH SLEEVE. DRIVE GROUND ROD UNTIL ITS TOP PROJECTS 1" ABOVE TOP OF CONCRETE PAD. PROVIDE 3/8" BARE STRANDED COPPER GROUNDING CONDUCTOR THROUGH SLEEVE AND PROVIDE 1/2" SCH. 40 PVC CONDUIT SLEEVE TO GROUND ROD. BAND GROUNDING CONDUCTORS AND PRIMARY CABLE TERMINATION SHELVES TO GROUND ROD.
 - PROVIDE GROUND ROD THROUGH SLEEVE. DRIVE GROUND ROD UNTIL ITS TOP PROJECTS 1" ABOVE TOP OF CONCRETE PAD. PROVIDE 3/8" BARE STRANDED COPPER GROUNDING CONDUCTOR THROUGH SLEEVE AND PROVIDE 1/2" SCH. 40 PVC CONDUIT SLEEVE TO GROUND ROD. BAND GROUNDING CONDUCTORS AND PRIMARY CABLE TERMINATION SHELVES TO GROUND ROD.



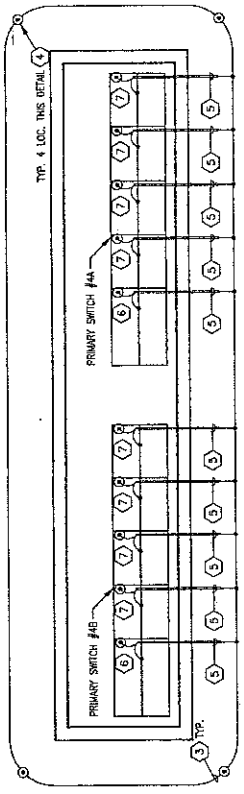
1 PRIMARY SWITCHES "A" AND "B" PLAN
 E-13 NTS



2 ELEVATION
 E-17 NTS

A SECTION
 E-17 NTS

B SECTION
 E-17 NTS



3 PRIMARY SWITCHES "A" AND "B"
 GROUNDING PLAN
 E-17 NTS

REDUCED DRAWING - VERIFY SCALE REPRESENTATIONS

Exhibit B
FIELD REPORT DATED FEBRUARY 2012

(

(

(

Report on Mole Pier Vacuum switches

FEBRUARY 2012

After an equipment visual inspection, we found the following equipment/materials deficiencies on Mole Pier, Key West.

Vacuum Switch for Switchgear #1

Condition of Vacuum Switch

1. High voltage cables insulation has salt buildup and evidence of tracking.
2. Ground wiring, switch tank and connections are showing signs of corrosion.
3. Vacuum switch seals are cracked and deteriorated.

Switchgear #1

Enclosure:

1. Door seals are worn and cracked allowing rain to enter the control area of the switchgear.
2. Cabinet heater for humidity control corroded and shorted out.
3. Overcurrent relays were in decent shape, most of them were recently replaced.
4. Most of the electronic controls are being exposed to the salt air corrosion and leading to failures of the safety devices installed on the breakers.

Breakers:

Breaker #1:

12 - Bad current transformers (housing cracked/broken)

Breaker #2:

10 - Bad current transformers (housing cracked/broken)

Breaker #3: Breaker Not in Place.

10 - Bad current transformers (housing cracked/broken)

1 Set of 750kcmil THHN cables from switchgear to shore power was removed.

Breaker #4:

10 - Bad current transformers (housing cracked/broken)

Vacuum Switch for Switchgear #2

Condition of Vacuum Switch

1. Ground wiring and connections are showing signs of corrosion.
2. Vacuum switch seals are cracked and deteriorated.
3. Gas meter gauge was indicating low levels of gas.

Switchgear #2

Enclosure:

1. Door seals are worn and cracked allowing rain to enter the control area of the switchgear.
2. Cabinet heater for humidity control corroded and shorted out.
3. Overcurrent relays were in decent shape, most of them were recently replaced.
4. Most of the electronic controls are being exposed to the salt air corrosion and leading to failures of the safety devices installed on the breakers.

Breakers:

Breaker #1:

12 - Bad current transformers (housing cracked/broken)

Breaker #2:

2 - Bad current transformers (housing cracked/broken)

Breaker #3:

6 - Bad current transformers (housing cracked/broken)
Cable connections are loose at SWGR connection point.

Breaker #4:

7 - Bad current transformers (housing cracked/broken)

Vacuum Switch for Switchgear #4

Condition of Vacuum Switch

1. Ground wiring and connections are showing signs of corrosion.
2. Vacuum switch seals are cracked and deteriorated.

Switchgear #4

Enclosure:

1. Door seals are worn and cracked allowing rain to enter the control area of the switchgear.
2. Cabinet heater for humidity control corroded and shorted out.
3. Overcurrent relays were in decent shape, most of them were recently replaced.

Breakers:

Breaker #1:

- 7 - Bad current transformers (housing cracked/broken).
- Broken 800A breaker.

Breaker #2:

- 7 - Bad current transformers (housing cracked/broken).
- 1 Set of 750kcmil THHN cables from switchgear to shore power were burned out and needs replacement.

Breaker #4:

- 1 Set of 750kcmil THHN cables from switchgear to shore power were burned out and needs replacement.

Switchgear #3 was not inspected at this moment due to cruises activity on the pier.

*It is expected to have mayor damage at this switchgear due to the location of the equipment.

NOTE:

A lot of maintenance effort has been provided already in order to keep the electrical equipment up and running against the weather environment from last condition reported back in 2011. Cleaning of equipments (switch gear and shore igloos), new CT's, new overcurrent devices, cable replacement/removal and changed breakers were part of the provided maintenance.

- The above equipment should be replaced/fix, in addition to any internal not operating equipment that was not detected at the moment of inspection and is not mentioned in this report.
- Existing cable is THHN. This type of cable is not designed to be in water continuously. This is leading to breakdowns in the insulation and causing the cables to short to ground. Existing THHN cables shall be replaced with **RHW** type insulation cables.

- In my opinion, all CT's should be replaced in order to ensure proper operation. Any "good" CT's can be kept as spare for future replacement.

Report on Mole Pier Vacuum switches

Main Vacuum Switches by gate to mole pier

1. Condition of Vacuum switch #1
 - a. Door seals are worn and cracked allowing rain to enter the control area of the switch.
 - b. Water leaking in from top and sides around joints
 - c. High voltage cables insulation has salt buildup and evidence of tracking.
 - d. Overcurrent relays on switches have deteriorated wiring harness leading to exposed wiring.
 - e. Ground wiring and connections are showing signs of corrosion.
1. Condition of Vacuum switch #2
 - a. Door seals are worn and cracked allowing rain to enter the control area of the switch.
 - b. Water leaking in from top and sides around joints
 - c. High voltage cables insulation has salt buildup and evidence of tracking.
 - d. Overcurrent relays on switches have deteriorated wiring harness leading to exposed wiring.
 - e. Ground wiring and connections are showing signs of corrosion.

Vacuum Switch for Switchgear #1

1. Condition of Vacuum switch enclosure
 - a. Water leaking in from top and sides around joints
2. Condition of Vacuum Switch
 - a. High voltage cables insulation has salt buildup and evidence of tracking.
 - b. Overcurrent relays on switches have deteriorated wiring harness leading to exposed wiring.
 - c. Ground wiring and connections are showing signs of corrosion

Switchgear #1

1. Condition of Enclosure
 - a. Door seals are worn and cracked allowing rain to enter the control area of the switchgear.
 - b. Cabinet heater for humidity control corroded and shorted out
 - c. Water leaking in from roof and sides around joints
2. Breakers
 - a. Breaker #1 Shore Power
 - (1) 2 bad CT's (Current transformers) housing cracked
 - c. Breaker #3 Shore Power
 - (1) Control switch nonoperational
 - (2) Output feeder cable to Shore power station damaged
 - (3) Bolts and hardware rusted
 - (4) 8 bad CT's (Current transformers) housing cracked
 - (5) Connection plug between breaker and switchgear broken
 - (6) Overcurrent Relay BE1-951 damaged due to salt corrosion-nonoperational
 - d. Breaker #4 Shore Power
 - (1) 2 bad CT's (Current transformers) housing cracked
 - (2) Secondary connector plug broken. Needs replaced
 - (3) Cables going to pier have grounds. Resistance to ground is less than 1000 ohms
3. Main Switchgear Transformer
 - a. Low on Oil
 - b. Rust on cooling Fins, vents, mounting bolts, and Ground connections

Switchgear #2

1. Condition of Enclosure
 - a. Door seals are worn and cracked allowing rain to enter the control area of the switchgear.
 - b. Cabinet heater for humidity control corroded and shorted out
 - c. Water leaking in from roof and sides around joints
2. Breakers
 - a. Breaker #1 Shore Power
 - (1) Output feeder cable to Shore power station damaged
 - (2) Secondary connector plug broken. Needs replaced
 - b. Breaker #2 Shore Power
 - (1) Output feeder cable to Shore power station damaged
 - (2) 11 bad CT's (Current transformers) housing cracked
 - c. Breaker #3 Shore Power
 - (1) Output feeder cable to Shore power station damaged
3. Main Switchgear Transformer
 - a. Rust on cooling Fins, vents, mounting bolts, and Ground connections
4. Condition of Vacuum switch supplying transformer
 - a. Seals leaking
 - b. High voltage cables insulation has salt buildup and evidence of tracking.

Switchgear #3

1. Condition of Enclosure
 - a. Door seals are worn and cracked allowing rain to enter the control area of the switchgear.
 - b. Cabinet heater for humidity control corroded and shorted out
 - c. Rubber Insulation on Bus Bars is melting and exposing live bus
 - d. Water leaking in from roof and sides around joints
2. Breakers
 - a. Breaker #1 Shore Power--Repaired
 - b. Breaker #2 Shore Power-Repaired
 - c. Breaker #3 Shore Power--Repaired
 - d. Breaker #4 Shore Power
 - (1) Control switch nonoperational
 - (2) Output feeder cable to Shore power station damaged
 - (3) Bolts and hardware rusted
3. Main Breakers supplying Shore power Breakers
 - a. Breaker #1
 - b. Breaker #2
4. Main Switchgear Transformer
 - a. Rust on cooling Fins, vents, mounting bolts, and Ground connections
5. Condition of Vacuum switch supplying transformer
 - a. Seals leaking
 - b. High voltage cables insulation has salt buildup and evidence of tracking.

Switchgear #4 Feeding Pier 8

1. Condition of Enclosure
 - a. Door seals are worn and cracked allowing rain to enter the control area of the switchgear.
 - b. Cabinet heater for humidity control corroded and shorted out
 - c. Water leaking in from roof and sides around joints
 2. Breakers
 - a. Breaker #1 Shore Power
 - (1) Output feeder cable to Shore power station damaged
 - (2) Bolts and hardware rusted.
 - (3) One set of cables to shore power station grounded and arcing to ground.
 - b. Breaker #2 Shore Power
 - (1) Output feeder cable to Shore power station damaged
 - (2) Bolts and hardware rusted
 - c. Breaker #3 Shore Power
 - (1) Output feeder cable to Shore power station damaged
 - (2) Bolts and hardware rusted
 - d. Breaker #4 Shore Power
 - (1) Control switch nonoperational
 - (2) Output feeder cable to Shore power station damaged
 - (3) Bolts and hardware rusted
 - (4) Breaker nonoperational without bypassing safeties.
- Cables for Shore power station #1 Grounded Distance 530 ft 6-cables 530 ft ea total 3180 ft of cable
3. Main Breakers supplying Shore power Breakers
 - a. Breaker #1
 - (1) Salt corrosion on control relays
 - b. Breaker #2
 - (1) Salt corrosion on control relays
 4. Main Switchgear Transformer
 - a. Rust on cooling Fins, vents, mounting bolts, and Ground connections
 5. Condition of Vacuum switch supplying transformer
 - a. Seals leaking
 - b. High voltage cables insulation has salt buildup and evidence of tracking.

Shore Power stations on Mole Pier

1. Switchgear #1

a. Igloo for Breakers #1&2

- (1) Seals on enclosures worn and cracked
- (2) Concrete has spalling and is breaking off in chunks
- (3) One set of cables to shore power station grounded and arcing to ground.

b. Igloo for Breakers #3&4

- (1) Seals on enclosures worn and cracked
- (2) Concrete has spalling and is breaking off in chunks
- (3) Shore power plug Phase C removed because of damage

1. Switchgear #2

a. Igloo for Breakers #1&2

- (1) Seals on enclosures worn and cracked
- (2) Concrete has spalling and is breaking off in chunks

b. Igloo for Breakers #3&4

- (1) Seals on enclosures worn and cracked
- (2) Concrete has spalling and is breaking off in chunks

1. Switchgear #3

a. Igloo for Breakers #1&2

- (1) Seals on enclosures worn and cracked
- (2) Concrete has spalling and is breaking off in chunks

b. Igloo for Breakers #3&4

- (1) Seals on enclosures worn and cracked
- (2) Concrete has spalling and is breaking off in chunks

1. Switchgear #4

a. Igloo for Breakers #1

- (1) Seals on enclosures worn and cracked
- (2) Igloo nonoperational due to blown cables

b. Igloo for Breakers # 2

- (1) Seals on enclosures worn and cracked

c. Igloo for Breakers # 3

- (1) Seals on enclosures worn and cracked

d. Igloo for Breakers # 4

- (1) Seals on enclosures worn and cracked

Overall condition is poor. Supply cables to shore power stations (750 MCM THHN) have the outer shielding damaged and the insulation of the cables is compromised in the duct banks. This has led to the cables shorting out to ground in the duct banks. The wire is THHN insulation, meaning it is suitable for dry or damp locations. The insulation that is damaged is the flame retardant insulation leaving the heat-resistant insulation as the sole insulation. Since the switchgears are not weather proof the base of the switchgears are filling up with water from salt water spray and rain, and this is causing the ducts to fill with a mixture of fresh and salt water. The THHN is not designed to be in water continuously. This is leading to breakdowns in the insulation and causing the cables to short to ground. With the Ct's having the cracked housings from over tightening of the mounting bolts during construction, the CT windings are now exposed to the elements. This is causing the CT's to give false readings to the control circuits of the breakers and not allowing them to operate correctly. Even though the exterior is made of Stainless steel,

the interior components are mad of mild steel. Most of the electronic controls are being exposed to the salt air corrosion and leading to failures of the safety devices installed on the breakers. Without the constant preventive maintenance and cleaning, the switchgears are slowly deteriorating to a point that an explosive electrical failure is possible. The only way to curtail further damage is to have a positive enclosure installed. Instead of maybe 2-3 years left of functioning equipment we could get 10-15.

I am trying to get pricing on repair parts and what we have so far is,

Overcurrent relays --\$2250 ea total of 5 \$11,250

CT's--around \$700 to \$800 ea total of 77 \$ 61,600

Control Pin connectors—Finally found and ordered

Cable 750MCM THHN total of 7780 feet.--\$19,500 per 1000 ft reel--\$156,000 in cable alone

Breaker control switches--\$950 ea total of 5 \$4750

Totals for estimates so far: \$250,000

For the Fresh water valves and the wastewater valve stations

Fresh Water

At all 16 stations we have 4 valves, one backflow preventer, and one meter.

All 16 stations have extensive rust on the piping and valves which is preventing the proper operation of the stations. The relief valve tubing on the backflows are cracked and in need of replacement. Meters are due for calibration.

Sewage

At all 16 stations we have one valve.

All 16 stations have extensive rust on the piping and valve which is preventing the proper operation of the stations.

Lift Station on Mole Pier

Needs a new control cabinet. Controls are rusting and have signs of hydrogen sulfide corrosion.

