



THE CITY OF KEY WEST

CHANGE ORDER

CHANGE ORDER NO. 1

CHANGE ORDER DESCRIPTION: **ADD:** 100 Amp Riser \$1,750.00
DEDUCT: Unnecessary ground wires (\$ 728.00)
ADD: Provide & Install five (5) waterproof enclosures \$ 9,450.00
ADD: 120 Days for Contract Completion

PROJECT NAME: E.B. Knight Pier Lighting Improvements

PROJECT CODE: HU1701G07

CONTRACTOR NAME: Pedro Falcon Contractors, Inc.

THE FOLLOWING MODIFICATIONS TO THE CONTRACT ARE HEREBY ORDERED:
(Detail provided on additional page(s). Yes x or No)

<u>CONTRACT VALUE</u>		<u>CONTRACT TIME (CALENDAR DAYS)</u>	
ORIGINAL CONTRACT	\$ <u>126,700.00</u>	ORIGINAL CONTRACT	<u>90</u> DAYS
PREVIOUS CHANGE ORDERS	\$ <u>0.00</u>	PREVIOUS CHANGE ORDERS	<u>0</u> DAYS
THIS CHANGE ORDER	\$ <u>10,472.00</u>	THIS CHANGE ORDER	<u>120</u> DAYS
REVISED CONTRACT VALUE	\$ <u>137,172.00</u>	REVISED CONTRACT TIME	<u>210</u> DAYS

REVISED CONTRACT COMPLETION DATE: January 14, 2019

By:

City of Key West

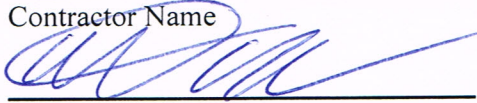
Authorized Signature

Printed Name

Title

Date

By:

Pedro Falcon Contractors, Inc.
Contractor Name


Authorized Signature

Christian Brisson
Printed Name

as President
Title

10/23/18
Date



PEDRO FALCON CONTRACTORS, INC.

31160 Avenue C, Big Pine Key, FL 33043-4516
(305) 872-2200 - Fax (305) 872-2219
EC 13003416 / CGC 1507617
www.pedrofalcon.com

Request for Change Order

Date Submitted: 10/23/18

Project: Edward B. Knight Pier Lighting

KW PO#:

Change Order Request No: One

Description:

Scope of Work:

- Provide material and labor to replace existing Electrical Riser that has excessive wear and corrosion.
- Provide material and labor to install 5 ea. Boxco Waterproof enclosures with transparent cover and mounting plate for: Meter Can, Main Disconnect, Lighting Contactor, Time Switch and Load Center.
- Provide proper penetration for Waterproof enclosures.

Contractor's Work

Materials.....	\$ 4,847.72
Labor and Equipment.....	\$ 5,205.57
Others, small tools and Consumables.....	\$ 128.53
Subtotal.....	\$ 10,181.82
Profit and Overhead @ 10%.....	\$ 1,018.18
Subtotal.....	\$ 11,200

Credit from previous work..... (\$ 728)
TOTAL ADDITIONAL COST FOR THE ABOVE..... \$10,472.00

Permit Fees and Design Drawings are Not Included in this proposal. If additional permit fees are required the Owner is to reimburse all permit fees.

Net Amount of Request for Change Order \$10,472.00

Additional Time Requested for Change:

- Request extending the contract time for 120 days due to backorder Pier Lights.

Respectfully Submitted,



Roman Sviridenko
Project Manager

Name of Project: Edward B. Knight Pier Electrical
Type of Submittal: Electrical Submittal Package
Date Submitted: Sept 19, 2018
Reviewed By: John Longinotti
Date Reviewed: Sept 19, 2018

NO EXCEPTIONS TAKEN SUBMIT SPECIFIED ITEM
 REJECTED REVISE AND RESUBMIT
 MAKE CORRECTIONS NOTED – DON'T RESUBMIT

CHECKING IS ONLY FOR GENERAL CONFORMANCE WITH THE DESIGN CONCEPT OF THE PROJECT AND GENERAL COMPLIANCE WITH THE INFORMATION GIVEN IN THE CONTRACT DOCUMENTS. ANY ACTION SHOWN IS SUBJECT TO THE REQUIREMENTS OF THE PLANS AND SPECIFICATIONS. CONTRACTOR IS RESPONSIBLE FOR ALL DIMENSIONS AND QUANTITIES WHICH SHALL BE CONFIRMED AND CORRELATED AT THE JOB SITE. IT IS HIGHLY RECOMMENDED AND REQUIRED THAT ALL DIMENSIONS ARE FIELD VERIFIED PRIOR TO ORDERING OR FABRICATION. FABRICATION PROCESSES AND TECHNOLOGIES OF CONSTRUCTION COORDINATION OF THEIR WORK AND THAT OF ALL OTHER TRADES AND THE SATISFACTORY PERFORMANCE OF THEIR WORK IS THE RESPONSIBILITY OF THE SUBMITTER AND / OR GENERAL TRADES CONTRACTOR.

k2m Design, Inc.

Date: 9/19/2018

Reviewed: John Longinotti

Comments are as follows and as noted on the enclosed submittal documents:

Approved as submitted.

Architect Information:

K2M Design, Inc.
 1150 Virginia Street
 Key West, Florida 33040

Point of Contact: Erica Poole
 Phone: 305-307-5840
 Email: epoole@k2mdesign.com



ENCLOSURE CATALOGUE

BOXCO® Boxco enclosures are the products with quality recognized from all over the world

■ Features of plastic material of BOXCO

1. Ultraviolet Stabilizer is added to protect the enclosures for outdoor usage. Few colour changes will be noticed even after a long time of use.
2. Anti-static material is used to protect sensitive electronic instruments from static electricity.
3. It is made of high impact resistant material which is very strong against external impact and also prevents breakage during hole and press processing.
4. Special spec can be added besides standard specification. We can supply optimized products with the spec and material you choose.

■ Flammability of BOXCO material

ABS (Grey Color) : 94-HB(standard)or 94-V-O (optional for terminal block series)

ABS (Grayish blue Color) : 94-5VB or 94-V-O

PC / ABS : 94-5VA

PC (Transparent) : 94-HB(standard)or 94-V-O (optional for terminal block series)

PC (Grey) : 94-V-O

■ Materials of BOXCO plastic products

ABS : Acrylonitrile Butadiene Styrene

PC (Transparent) : Polycarbonate

PBT / PC : Polybutylene Terephthalate + Polycarbonate

Material can be changed for Quality improving

PC/ABS : Polycarbonate + Acrylonitrile Butadiene Styrene

PC (Grey) : Polycarbonate or Polycarbonate + Glass Fiber

■ Plastic materials by model

BC-AGP , AGH, AGS, AGM : Cover(ABS), Base(ABS)

BC-PGP , PGH, PGS, PGM : Cover(PC/ABS), Base(PC/ABS)

BC-CGP , CGH, CGS, CGM : Cover(PC), Base(PC)

BC-ATP , ATH, ATS, ATM : Cover(PC), Base(ABS)

BC-PTP , PTH, PTS, PTM : Cover(PC), Base(PC/ABS)

BC-CTP , CTH, CTS, CTM : Cover(PC), Base(PC)

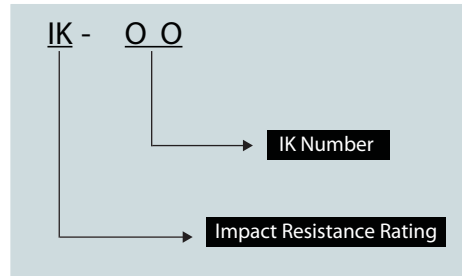
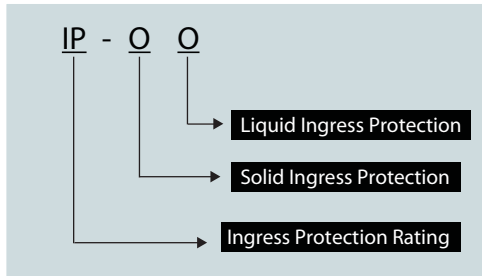


The Control Box, Terminal Box, Switch Box, Joint Box, Cable Gland..... with BOXCO.

IP.IK BOXCO Ingress Protection Grade

IP 66/67, IK 07/08 protection plastic enclosure

IP 66/67, IK 09/10 protection aluminium enclosure



IEC (International Electrotechnical Commission) defines protection structure of electric instruments or protection boxes as follows :

1 FIRST NUMBER	PROTECTION AGAINST SOLID	2 SECOND NUMBER	PROTECTION AGAINST LIQUID	IK CODE	PROTECTION AGAINST MECHANICAL IMPACT
IP	TEST	IP	TEST	IK	TEST
0	No Protection	0	No Protection	0	No Protection
1	Protected against solid objects up to 50mm, e.g. accidental touch by hands.	1	Protected against vertically falling drops of water e.g. condensation.	01 05	Impact { 1 joule
2	Protected against solid objects up to 12mm, e.g. fingers.	2	Protected against direct sprays of water up to 15° from the vertical.	06	Impact = 1 joule
3	Protected against solid objects over 2.5mm (tools and wires).	3	Protected against direct sprays of water up to 60° from the vertical.	07	Impact = 2 joule
4	Protected against solid objects over 1mm (tools, wires and small wires).	4	Protected against water sprays from all directions ° limited ingress permitted.	08	Impact = 5 joule
5	Protected against dust limited ingress (no harmful deposit).	5	Protected against low pressure jets of water from all directions ° limited ingress.	09	Impact = 10 joule
6	Totally protected against dust	6	Protected against low pressure jets of water, e.g. for use on ship decks- limited ingress permitted.	10	Impact = 20 joule
		7	Protected against the effect of immersion between 15cm and 1m for 30 minutes.		
		8	Protected against long periods of immersion under pressure.		

P Series - Draw Latch

Main part of the draw latch are made of stainless steel so it is very strong



Bracket Mounting Point

By using brass insert in injection molding, it helps to fix the enclosure tightly onto other surfaces



P Series - Integrated Hinge

Hinge is made of plastic and is integrated with the enclosure. Bearing is made of stainless steel to increase the life span.



Mounting Plate Attachment Part

Internal mounting plate can be fixed tightly onto the brass inserted injection molding to handle heavy equipments installed inside the enclosure



P Series - Roof Function

Both ends of the P series are protruded to protect against penetration of water when using it outdoor and penetration of dust when opening/closing the cover



Pre-molded Mounting Screw Nuts

You can easily fix DIN RAIL or other equipment onto the pre-molded screw nuts



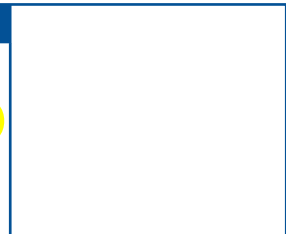
H Series - SUS Latch

It has double lock system and has been tested to prevent loosening during vibration



Plastic Mounting Plate

The plate is made from ABS materials and it is easy to drill holes and has excellent insulation property



H Series - SUS Hinge

Available in different sizes to suit different size of enclosures



Steel Mounting Plate

Very strong steel mounting plate designed to handle heavy equipments installed inside the enclosure



S Series - Cover Bolt Mounting Point

Screw thread was made in injection molding to ensure maximum strength



Gasket

The gasket is injected by super precise CNC robot machine to produce excellent waterproof and dust-proof performance



M Series - Low Profile Cover Screw Type

It has low profile cover design for attachment of membrane keyboard



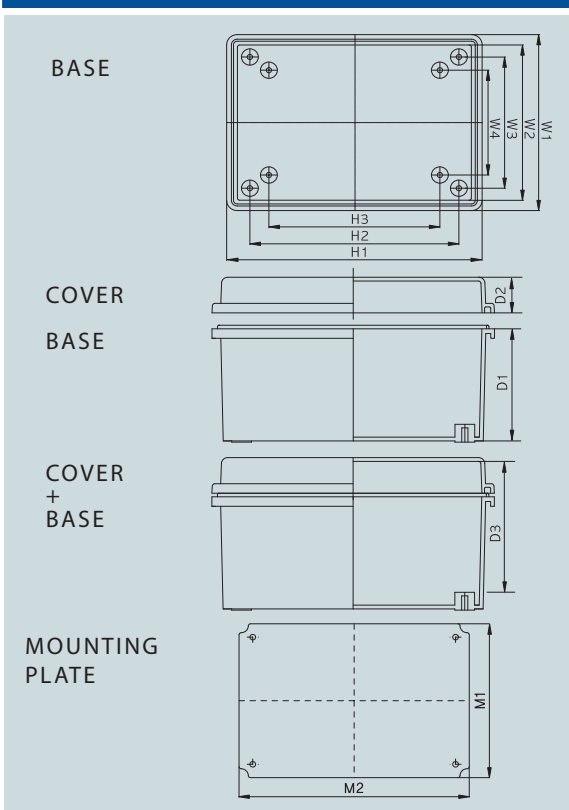
Knock-out Holes

Easy to knock-out holes available in Knock-out Boxes, Push Button Boxes and Terminal Block Boxes





DIMENSION (±1 mm)



Size	Division	W1	W2	W3	W4	H1	H2	H3	D1	D2	D3
90 x 120 x 70		90	77.5	50	0	128.4	80	69	50	20	51.5
90 x 120 x 85		90	77.5	50	0	128.4	80	69	65	20	66.5
100 x 150 x 70		100	87.5	60	0	158.4	110	99	50	20	51.5
100 x 150 x 85		100	87.5	60	0	158.4	110	99	65	20	66.5
110 x 210 x 75		110	87.7	70	0	218.4	170	158	55	20	56.5
110 x 210 x 100		110	87.7	70	0	218.4	170	158	80	20	81.5
110 x 260 x 75		110	87.7	70	0	268.4	220	208	55	20	56.5
110 x 260 x 100		110	87.7	70	0	268.4	220	208	80	20	81.5
135 x 155 x 85		135	115	105	0	150	119.3	110	65	20	67.5
135 x 185 x 85		135	108	95	0	193.4	145	140	65	20	67.5
135 x 185 x 100		135	108	95	0	193.4	145	140	80	20	82.5
150 x 150 x 90		150	130	120	0	150	120	110	70	20	71.5
150 x 150 x 120		150	130	120	0	150	120	110	100	20	101.5
160 x 210 x 100		160	137	120	0	218.4	170	160	75	25	81.5
160 x 210 x 130		160	137	120	0	218.4	170	160	105	25	111.5
160 x 260 x 100		160	144.6	120	0	268.4	220	210	75	25	85.5
160 x 260 x 130		160	144.6	120	0	268.4	220	210	105	25	111.5
170 x 220 x 110		170	149.6	132	0	228.4	182	160	80	30	93
170 x 270 x 110		170	149.6	132	0	278.4	232	210	80	30	93
190 x 280 x 100		190	173.5	148	120	228.4	238	210	70	30	108.5
190 x 280 x 140		190	173.5	148	120	228.4	238	210	110	30	128.5
200 x 300 x 130		200	181.8	152	129	308.4	252	226	100	30	108
200 x 300 x 150		200	181.8	152	129	308.4	252	226	120	30	128.5
200 x 300 x 180		200	181.8	152	129	308.4	252	226	150	30	158.5
210 x 210 x 100		210	192.3	170	120	218.4	170	150	75	25	81.5
210 x 210 x 130		210	192.3	170	120	218.4	170	150	105	25	111.5
250 x 350 x 150		250	231.8	202	180	358.4	302	271	120	30	130
250 x 350 x 180		250	231.8	202	180	358.4	302	271	150	30	160
280 x 280 x 130		280	264.1	238	210	288.4	338	310	100	30	108
280 x 380 x 130		280	264.1	238	210	388.4	338	310	100	30	108
300 x 300 x 150		300	283.3	252	230	308.4	252	219	120	30	131.5
300 x 300 x 180		300	283.3	252	230	308.4	252	219	150	30	161.5
300 x 400 x 120		300	275.5	252	228	408.4	352	325	90	30	98.5
300 x 400 x 150		300	275.5	252	228	408.4	352	325	120	30	128.5
300 x 400 x 180		300	275.5	252	228	408.4	352	325	150	30	158.5
350 x 350 x 150		350	333.8	302	270	358.4	302	270	120	30	132
350 x 350 x 180		350	333.8	302	270	358.4	302	270	150	30	162
350 x 450 x 120		350	325.4	300	274	457.4	400	365	90	30	98
350 x 450 x 150		350	325.4	300	274	457.4	400	365	130	30	138
350 x 450 x 180		350	325.4	300	274	457.4	400	365	170	30	178
400 x 500 x 160		400	370.5	352	328	511.4	452	428	130	35	137
400 x 500 x 200		400	370.5	352	328	511.4	452	428	170	35	178
400 x 600 x 180		401	370.5	352	328	611.4	552	525	150	35	158
400 x 600 x 230		401	370.5	352	328	611.4	552	525	200	35	208
530 x 630 x 185		530	487.4	462	426	641.4	562	526	150	35	163
530 x 630 x 255		530	487.4	462	426	641.4	562	526	220	35	233
530 x 730 x 185		530	487.4	462	426	741.4	662	626	150	35	163
530 x 730 x 255		530	487.4	462	426	741.4	662	626	220	35	233
630 x 830 x 185		630	581.9	562	526	841.4	762	726	150	35	163
630 x 830 x 285		630	581.9	562	526	841.4	762	726	220	35	253

Water proof	IP 66/67
Impact proof	IK 07/08
Temperature	ABS : -40~+85 PC: -40~+120
Flammability	ABS : 94-HB PC : 94-HB, 94-V-0~5VA

PRODUCT CHARACTERISTICS

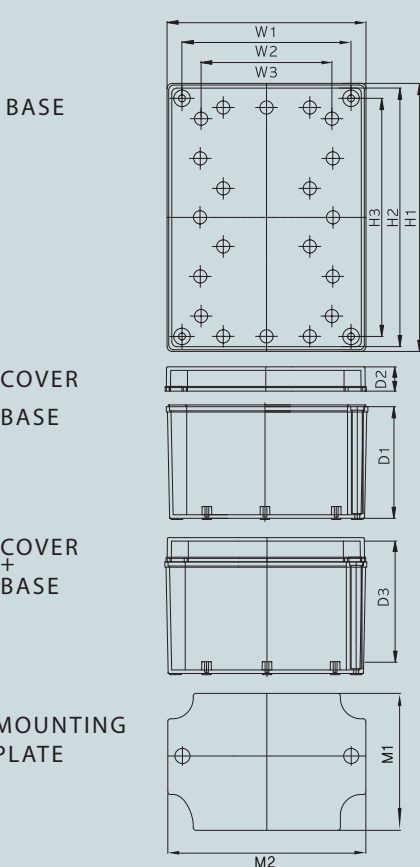
1. A roof is extended from the top and bottom sides of the enclosure base. This design prevents rain and dust from penetrating.
2. Enclosure cover and base can be easily separated. This allows the use to attach or detach them easily for processing and printing.
3. Hinge is inserted to the product. Hinge connection pins and critical parts of draw latch are made of stainless steel which is very strong and resistant against corrosion and rust.





The dimension of mounting plate is based on the plastic mounting plate and the dimension with a round bracket is steel mounting plate

DIMENSIONS (±1 mm)

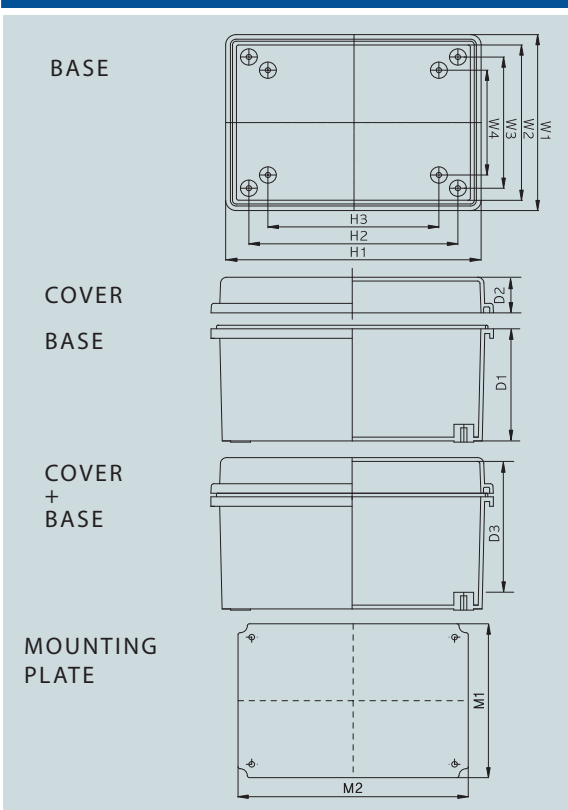


Size	Division			H1	H2	H3	D1	D2	D3
	W1	W2	W3						
80 x 130 x 35	80	62	40	130	112	90	25	10	21.5
80 x 130 x 60	80	62	40	130	112	90	50	10	46.5
80 x 130 x 75	80	62	40	130	112	90	65	10	61.5
80 x 130 x 85	80	62	40	130	112	90	50	35	71.5
80 x 130 x 100	80	62	40	130	112	90	90	10	87.5
80 x 130 x 125	80	112	40	130	112	90	90	35	111.5
130 x 130 x 35	130	112	90	130	112	90	25	10	21.5
130 x 130 x 60	130	112	90	130	112	90	50	10	46.5
130 x 180 x 35	130	112	90	180	162	140	25	10	21.5
130 x 180 x 60	130	132	90	180	162	140	50	10	46.5
150 x 180 x 60	150	162	110.5	180	162	140	50	10	45.5
180 x 180 x 60	180	162	140	180	162	140	50	10	45.5
180 x 180 x 75	180	162	140	180	162	140	65	10	59.5
180 x 180 x 100	180	162	140	180	162	140	90	10	84.5
180 x 180 x 125	180	162	140	180	162	140	115	10	109.5
180 x 255 x 75	180	162	140	255	244	201.5	60	15	59.5
180 x 255 x 100	180	162	140	255	94	201.5	85	15	84.5
180 x 255 x 125	180	162	140	255	94	201.5	110	15	109.5

Water proof	IP 66/67
Impact proof	IK 07/08
Temperature	ABS :-40~+85 PC:-40~+120
Flammability	ABS :94-HB PC : 94-HB, 94-V-0~5VA



DIMENSION (+1 mm)



Division	W1	W2	W3	W4	H1	H2	H3	D1	D2	D3
90 x 120 x 70	90	77.5	50	0	128.4	80	69	50	20	51.5
90 x 120 x 85	90	77.5	50	0	128.4	80	69	65	20	66.5
100 x 150 x 70	100	87.5	60	0	158.4	110	99	50	20	51.5
100 x 150 x 85	100	87.5	60	0	158.4	110	99	65	20	66.5
110 x 210 x 75	110	87.7	70	0	218.4	170	158	55	20	56.5
110 x 210 x 100	110	87.7	70	0	218.4	170	158	80	20	81.5
110 x 260 x 75	110	87.7	70	0	268.4	220	208	55	20	56.5
110 x 260 x 100	110	87.7	70	0	268.4	220	208	80	20	81.5
135 x 155 x 85	135	115	105	0	150	119.3	110	65	20	67.5
135 x 185 x 85	135	108	95	0	193.4	145	140	65	20	67.5
135 x 185 x 100	135	108	95	0	193.4	145	140	80	20	82.5
150 x 150 x 90	150	130	120	0	150	120	110	70	20	71.5
150 x 150 x 120	150	130	120	0	150	120	110	100	20	101.5
160 x 210 x 100	160	137	120	0	218.4	170	160	75	25	81.5
160 x 210 x 130	160	137	120	0	218.4	170	160	105	25	111.5
160 x 260 x 100	160	144.6	120	0	268.4	220	210	75	25	85.5
160 x 260 x 130	160	144.6	120	0	268.4	220	210	105	25	111.5
170 x 220 x 110	170	149.6	132	0	228.4	182	160	80	30	93
170 x 270 x 110	170	149.6	132	0	278.4	232	210	80	30	93
190 x 280 x 100	190	173.5	148	120	228.4	238	210	70	30	108.5
190 x 280 x 140	190	173.5	148	120	228.4	238	210	110	30	128.5
200 x 300 x 130	200	181.8	152	129	308.4	252	226	100	30	108
200 x 300 x 150	200	181.8	152	129	308.4	252	226	120	30	128.5
200 x 300 x 180	200	181.8	152	129	308.4	252	226	150	30	158.5
210 x 210 x 100	210	192.3	170	120	218.4	170	150	75	25	81.5
210 x 210 x 130	210	192.3	170	120	218.4	170	150	105	25	111.5
250 x 350 x 150	250	231.8	202	180	358.4	302	271	120	30	130
250 x 350 x 180	250	231.8	202	180	358.4	302	271	150	30	160
280 x 280 x 130	280	264.1	238	210	288.4	238	210	100	30	108
280 x 380 x 130	280	264.1	238	210	388.4	338	310	100	30	108
300 x 300 x 150	300	283.3	252	230	308.4	252	219	120	30	131.5
300 x 300 x 180	300	283.3	252	230	308.4	252	219	150	30	161.5
300 x 400 x 120	300	275.5	252	228	408.4	352	325	90	30	98.5
300 x 400 x 150	300	275.5	252	228	408.4	352	325	120	30	128.5
300 x 400 x 180	300	275.5	252	228	408.4	352	325	150	30	158.5
350 x 350 x 150	350	333.8	302	270	358.4	302	270	120	30	132
350 x 350 x 180	350	333.8	302	270	358.4	302	270	150	30	162
350 x 450 x 120	350	325.4	300	274	457.4	400	365	90	30	98
350 x 450 x 150	350	325.4	300	274	457.4	400	365	130	30	138
350 x 450 x 180	350	325.4	300	274	457.4	400	365	170	30	178
400 x 500 x 160	400	370.5	352	328	511.4	452	428	130	35	137
400 x 500 x 200	400	370.5	352	328	511.4	452	428	170	35	178
400 x 600 x 180	401	370.5	352	328	611.4	552	525	150	35	158
400 x 600 x 230	401	370.5	352	328	611.4	552	525	200	35	208
530 x 630 x 185	530	487.4	462	426	641.4	562	526	150	35	163
530 x 630 x 255	530	487.4	462	426	641.4	562	526	220	35	233
530 x 730 x 185	530	487.4	462	426	741.4	662	626	150	35	163
530 x 730 x 255	530	487.4	462	426	741.4	662	626	220	35	233
630 x 830 x 185	630	581.9	562	526	841.4	762	726	150	35	163
630 x 830 x 285	630	581.9	562	526	841.4	762	726	220	35	253

Water proof	IP 66/67
Impact proof	IK 07/08
Temperature	ABS : -40~+85 PC: -40~+120
Flammability	ABS : 94-HB PC : 94-HB, 94-V-0~5VA

PRODUCT CHARACTERISTICS

1. A roof is extended from the top and bottom sides of the enclosure base. This design prevents rain and dust from penetrating.
2. Enclosure cover and base can be easily separated. This allows the use to attach or detach them easily for processing and printing.
3. Hinge is inserted to the product. Hinge connection pins and critical parts of draw latch are made of stainless steel which is very strong and resistant against corrosion and rust.



MODEL AND SIZE

Size (cover included)	Product Model				Plate Model		Plate Size	
Width x Length x Height (mm)	ABS		PC		Steel Mounting Plate 1.6mm	Plastic Mounting Plate 3~4.5 mm	M1	M2
	Grey Cover	Transparent Cover	Grey Cover	Transparent Cover				
90 x 120 x 70	BC-AGP-091207	BC-ATP-091207	BC-CGP-091207	BC-CTP-091207	0912 S	0912 P	65	95
90 x 120 x 85	BC-AGP-091208	BC-ATP-091208	BC-CGP-091208	BC-CTP-091208	0912 S	0912 P	65	95
100 x 150 x 70	BC-AGP-101507	BC-ATP-101507	BC-CGP-101507	BC-CTP-101507	1015 S	1015 P	65	115
100 x 150 x 85	BC-AGP-101508	BC-ATP-101508	BC-CGP-101508	BC-CTP-101508	1015 S	1015 P	65	115
110 x 210 x 75	BC-AGP-112107	BC-ATP-112107	BC-CGP-112107	BC-CTP-112107	1121 S	1121 P	88	189
110 x 210 x 100	BC-AGP-112110	BC-ATP-112110	BC-CGP-112110	BC-CTP-112110	1121 S	1121 P	88	189
110 x 260 x 75	BC-AGP-112607	BC-ATP-112607	BC-CGP-112607	BC-CTP-112607	1126 S	1126 P	85	232
110 x 260 x 100	BC-AGP-112610	BC-ATP-112610	BC-CGP-112610	BC-CTP-112610	1126 S	1126 P	85	232
135 x 155 x 85	BC-AGP-131508	BC-ATP-131508	BC-CGP-131508	BC-CTP-131508	1315 S	1315 P	101	126
135 x 185 x 85	BC-AGP-131808	BC-ATP-131808	BC-CGP-131808	BC-CTP-131808	1318 S	1318 P	113	161
135 x 185 x 100	BC-AGP-131810	BC-ATP-131810	BC-CGP-131810	BC-CTP-131810	1318 S	1318 P	113	161
150 x 150 x 90	BC-AGP-151509	BC-ATP-151509	BC-CGP-151509	BC-CTP-151509	1515 S	1515 P	123	123
150 x 150 x 120	BC-AGP-151512	BC-ATP-151512	BC-CGP-151512	BC-CTP-151512	1515 S	1515 P	123	123
160 x 210 x 100	BC-AGP-162110	BC-ATP-162110	BC-CGP-162110	BC-CTP-162110	1621 S	1621 P	129	179
160 x 210 x 130	BC-AGP-162113	BC-ATP-162113	BC-CGP-162113	BC-CTP-162113	1621 S	1621 P	129	179
160 x 260 x 100	BC-AGP-162610	BC-ATP-162610	BC-CGP-162610	BC-CTP-162610	1626 S	1626 P	129	224
160 x 260 x 130	BC-AGP-162613	BC-ATP-162613	BC-CGP-162613	BC-CTP-162613	1626 S	1626 P	129	224
170 x 220 x 110	BC-AGP-172211	BC-ATP-172211	BC-CGP-172211	BC-CTP-172211	1722 S	1722 P	129	179
170 x 270 x 110	BC-AGP-172711	BC-ATP-172711	BC-CGP-172711	BC-CTP-172711	1727 S	1727 P	129	224
190 x 280 x 100	BC-AGP-192810	BC-ATP-192810	BC-CGP-192810	BC-CTP-192810	1928 S	1928 P	159	248
190 x 280 x 140	BC-AGP-192814	BC-ATP-192814	BC-CGP-192814	BC-CTP-192814	1928 S	1928 P	159	248
200 x 300 x 130	BC-AGP-203013	BC-ATP-203013	BC-CGP-203013	BC-CTP-203013	2030 S	2030 P	166	266
200 x 300 x 150	BC-AGP-203015	BC-ATP-203015	BC-CGP-203015	BC-CTP-203015	2030 S	2030 P	166	266
200 x 300 x 180	BC-AGP-203018	BC-ATP-203018	BC-CGP-203018	BC-CTP-203018	2030 S	2030 P	166	266
210 x 210 x 100	BC-AGP-212110	BC-ATP-212110	BC-CGP-212110	BC-CTP-212110	2121 S	2121 P	179	179
210 x 210 x 130	BC-AGP-212113	BC-ATP-212113	BC-CGP-212113	BC-CTP-212113	2121 S	2121 P	179	179
250 x 350 x 150	BC-AGP-253515	BC-ATP-253515	BC-CGP-253515	BC-CTP-253515	2535 S	2535 P	216	316
250 x 350 x 180	BC-AGP-253518	BC-ATP-253518	BC-CGP-253518	BC-CTP-253518	2535 S	2535 P	216	316
280 x 280 x 130	BC-AGP-282813	BC-ATP-282813	BC-CGP-282813	BC-CTP-282813	2828 S	2828 P	248	248
280 x 380 x 130	BC-AGP-283813	BC-ATP-283813	BC-CGP-283813	BC-CTP-283813	2838 S	2838 P	248	348
300 x 300 x 150	BC-AGP-303015	BC-ATP-303015	BC-CGP-303015	BC-CTP-303015	3030 S	3030 P	262	262
300 x 300 x 180	BC-AGP-303018	BC-ATP-303018	BC-CGP-303018	BC-CTP-303018	3030 S	3030 P	262	262
300 x 400 x 120	BC-AGP-304012	BC-ATP-304012	BC-CGP-304012	BC-CTP-304012	3040 S	3040 P	265	365
300 x 400 x 150	BC-AGP-304015	BC-ATP-304015	BC-CGP-304015	BC-CTP-304015	3040 S	3040 P	265	365
300 x 400 x 180	BC-AGP-304018	BC-ATP-304018	BC-CGP-304018	BC-CTP-304018	3040 S	3040 P	265	365
350 x 350 x 150	BC-AGP-353515	BC-ATP-353515	BC-CGP-353515	BC-CTP-353515	3535 S	3535 P	320	320
350 x 350 x 180	BC-AGP-353518	BC-ATP-353518	BC-CGP-353518	BC-CTP-353518	3535 S	3535 P	320	320
350 x 450 x 120	BC-AGP-354512	BC-ATP-354512	BC-CGP-354512	BC-CTP-354512	3545 S	3545 P	306	407
350 x 450 x 160	BC-AGP-354516	BC-ATP-354516	BC-CGP-354516	BC-CTP-354516	3545 S	3545 P	306	407
350 x 450 x 200	BC-AGP-354520	BC-ATP-354520	BC-CGP-354520	BC-CTP-354520	3545 S	3545 P	306	407
400 x 500 x 160	BC-AGP-405016	BC-ATP-405016	BC-CGP-405016	BC-CTP-405016	4050 S	4050 P	358	458
400 x 500 x 200	BC-AGP-405020	BC-ATP-405020	BC-CGP-405020	BC-CTP-405020	4050 S	4050 P	358	458
400 x 600 x 180	BC-AGP-406018	BC-ATP-406018	BC-CGP-406018	BC-CTP-406018	4060 S	4060 P	358	558
400 x 600 x 230	BC-AGP-406023	BC-ATP-406023	BC-CGP-406023	BC-CTP-406023	4060 S	4060 P	358	558
530 x 630 x 185	BC-AGP-506018	BC-ATP-506018	BC-CGP-506018	BC-CTP-506018	5060 S	5060 P	450	555
530 x 630 x 255	BC-AGP-506025	BC-ATP-506025	BC-CGP-506025	BC-CTP-506025	5060 S	5060 P	450	555
530 x 730 x 185	BC-AGP-507018	BC-ATP-507018	BC-CGP-507018	BC-CTP-507018	5070 S	5070 P	450	655
530 x 730 x 255	BC-AGP-507025	BC-ATP-507025	BC-CGP-507025	BC-CTP-507025	5070 S	5070 P	450	655
630 x 830 x 185	BC-AGP-608018	BC-ATP-608018	BC-CGP-608018	BC-CTP-608018	6080 S		550	755
630 x 830 x 255	BC-AGP-608028	BC-ATP-608028	BC-CGP-608028	BC-CTP-608028	6080 S		550	755

ACCESSORIES



Steel mounting plate (Zinc plating)



Plastic mounting plate (ABS)



Key ring (K40)



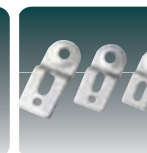
Locker (SK)



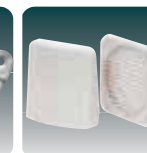
Plastic locker (PK)



(PSK)



Wall mounting bracket (B40, B50, B60)



Vent (V60, V80)

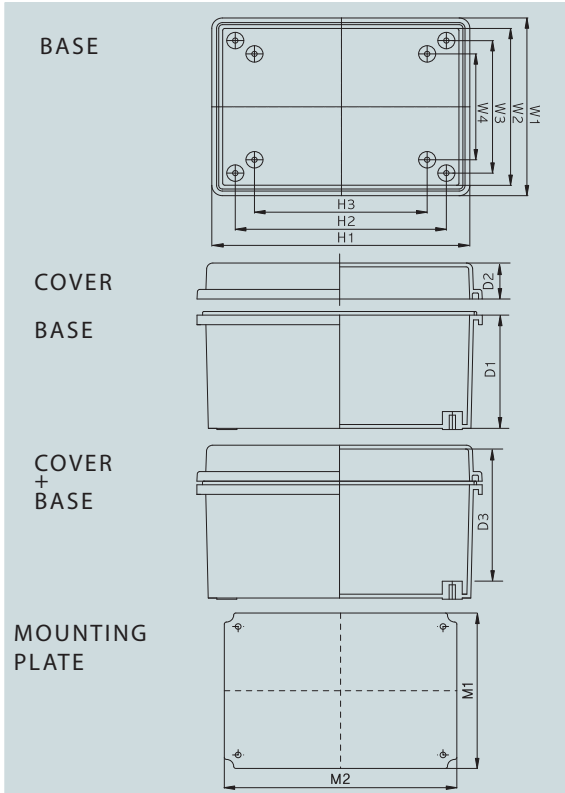


Plastic bracket (PB 20, 25)



The dimension of mounting plate is based on the plastic mounting plate and the dimension with a round bracket is steel mounting plate

DIMENSION (± 1 mm)



Size	Division								D1	D2	D3
	W1	W2	W3	W4	H1	H2	H3	H4			
225 x 275 x 120	225	219	204.6	183	276	270	234	210	90	30	98
275 x 225 x 120	276	270	234	210	225	219	204	183	90	30	98
200 x 300 x 150	200	180	152	129	300	280	252	226	120	30	128.5
300 x 200 x 150	300	280	252	226	200	180	152	129	120	30	128.5
200 x 300 x 180	200	180	152	129	300	280	252	226	150	30	158.5
300 x 200 x 180	300	280	252	226	200	180	152	129	150	30	158.5
250 x 350 x 150	250	230	206	180	350	330	306	269	120	30	128.5
350 x 250 x 150	350	330	306	269	250	230	206	180	120	30	128.5
300 x 400 x 150	300	280	252	230	400	380	352	325	120	30	128
400 x 300 x 150	400	380	352	325	300	280	252	230	120	30	128
300 x 400 x 180	300	280	252	230	400	380	352	325	150	30	158
400 x 300 x 180	400	380	352	325	300	280	252	230	150	30	158
350 x 450 x 160	350	323	298	276	450	423	398	376	130	30	138
450 x 350 x 160	450	423	398	376	350	323	298	276	130	30	138
350 x 450 x 200	350	323	298	276	450	423	398	376	170	30	178
450 x 350 x 200	450	423	398	376	350	323	298	276	170	30	178
400 x 500 x 200	402	375	352	328	502	475	452	428	170	30	178
500 x 400 x 200	502	475	452	428	402	375	352	328	170	30	178
400 x 600 x 230	402	375	352	328	602	575	552	525	200	30	208
600 x 400 x 230	602	575	552	525	402	375	352	328	200	30	208

Water proof	IP 66/67
Impact proof	IK 07/08
Temperature	ABS : -40~+85 PC: -40~+120
Flammability	ABS : 94-HB PC : 94-HB, 94-V-0~5VA

PRODUCT CHARACTERISTICS

1. The enclosure is equipped with stainless steel hinge and draw latch ensuring a long lasting service life.
2. The size of hinge and draw latch is increased with respect to the size of the enclosure. This provides the enclosure with perfect air tightness.
3. The enclosure is constructed using strong material and structure which can be used in inferior or dangerous industrial fields.



MODEL AND SIZE

Size (cover included)	Product Model				Plate Model		Plate Size	
	ABS		PC		Steel Mounting Plate 1.6mm	Plastic Mounting Plate 3~4.5 mm	M1	M2
Width x Length x Height (mm)	Grey Cover	Tranparent Cover	Grey Cover	Tranparent Cover				
225 x 275 x 120	BC-AGH-222712	BC-ATH-222712	BC-CGH-222712	BC-CTH-222712	2227 S	2227 P	190	242
275 x 225 x 120	BC-AGH-272212	BC-ATH-272212	BC-CGH-272212	BC-CTH-272212	2227 S	2227 P	190	242
200 x 300 x 150	BC-AGH-203015	BC-ATH-203015	BC-CGH-203015	BC-CTH-203015	2030 S	2030 P	166	266
300 x 200 x 150	BC-AGH-302015	BC-ATH-302015	BC-CGH-302015	BC-CTH-302015	2030 S	2030 P	166	266
200 x 300 x 180	BC-AGH-203018	BC-ATH-203018	BC-CGH-203018	BC-CTH-203018	2030 S	2030 P	166	266
300 x 200 x 180	BC-AGH-302018	BC-ATH-302018	BC-CGH-302018	BC-CTH-302018	2030 S	2030 P	166	266
250 x 350 x 150	BC-AGH-253515	BC-ATH-253515	BC-CGH-253515	BC-CTH-253515	2535 S	2535 P	216	316
350 x 250 x 150	BC-AGH-352515	BC-ATH-352515	BC-CGH-352515	BC-CTH-352515	2535 S	2535 P	216	316
300 x 400 x 150	BC-AGH-304015	BC-ATH-304015	BC-CGH-304015	BC-CTH-304015	3040 S	3040 P	265	365
400 x 300 x 150	BC-AGH-403015	BC-ATH-403015	BC-CGH-403015	BC-CTH-403015	3040 S	3040 P	265	365
300 x 400 x 180	BC-AGH-304018	BC-ATH-304018	BC-CGH-304018	BC-CTH-304018	3040 S	3040 P	265	365
400 x 300 x 180	BC-AGH-403018	BC-ATH-403018	BC-CGH-403018	BC-CTH-403018	3040 S	3040 P	265	365
350 x 450 x 160	BC-AGH-354516	BC-ATH-354516	BC-CGH-354516	BC-CTH-354516	3545 S	3545 P	306	407
450 x 350 x 160	BC-AGH-453516	BC-ATH-453516	BC-CGH-453516	BC-CTH-453516	3545 S	3545 P	306	407
350 x 450 x 200	BC-AGH-354520	BC-ATH-354520	BC-CGH-354520	BC-CTH-354520	3545 S	3545 P	306	407
450 x 350 x 200	BC-AGH-453520	BC-ATH-453520	BC-CGH-453520	BC-CTH-453520	3545 S	3545 P	306	407
400 x 500 x 200	BC-AGH-405020	BC-ATH-405020	BC-CGH-405020	BC-CTH-405020	4050 S	4050 P	358	458
500 x 400 x 200	BC-AGH-504020	BC-ATH-504020	BC-CGH-504020	BC-CTH-504020	4050 S	4050 P	358	458
400 x 600 x 230	BC-AGH-406023	BC-ATH-406023	BC-CGH-406023	BC-CTH-406023	4060 S	4060 P	358	458
600 x 400 x 230	BC-AGH-604023	BC-ATH-604023	BC-CGH-604023	BC-CTH-604023	4060 S	4060 P	358	458

ACCESSORIES



Steel mounting plate(Zinc plating)



Plastic mounting plate(ABS)



Key ring(K40)

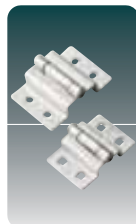
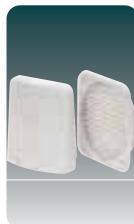
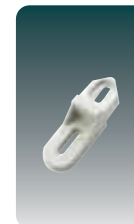


Locker (SK)



Plastic locker (PK)


 Wall mounting bracket
(B40, B50, B60)

 Draw latch
(M65, M75)

 Hinge
(H65, H75)

 Vent
(V60, V80)

 Plastic bracket
(PB 25)



The dimension of mounting plate is based on the plastic mounting plate and the dimension with a round bracket is steel mounting plate

DIMENSION (±1 mm)

BASE		Division	W1	W2	W3	W4	H1	H2	H3	H4	D1	D2	D3
		Size											
		190 x 190 x 130	190	170	165	120	190	170	165	120	98	30	112
		190 x 280 x 130	190	170	165	120	280	266	255	210	98	30	112
		280 x 190 x 130	280	266	255	210	190	170	165	120	98	30	112
		190 x 280 x 180	190	170	165	120	280	266	255	210	150	30	159
		280 x 190 x 180	280	266	255	210	190	170	165	210	150	30	159
		190 x 380 x 130	190	170	165	120	380	359	355	310	98	30	109
		380 x 190 x 130	380	359	355	310	190	170	165	120	98	30	109
		190 x 380 x 180	190	170	165	120	380	360	355	310	150	30	159
		380 x 190 x 180	380	359	355	310	190	170	165	120	150	30	159
		280 x 280 x 130	280	265	254.7	210	280	210	255	210	98	30	112
		280 x 340 x 130	280	259	254.7	210	340	319	315	270	100	30	111
		340 x 280 x 130	340	319	315	270	280	259	254.7	210	100	30	111
		280 x 380 x 130	280	266	255	210	380	359	315	310	98	30	111
		380 x 280 x 130	380	359	355	310	280	266	255	210	98	30	111
		280 x 380 x 180	280	266	255	210	380	359	355	310	148	30	161.5
		380 x 280 x 180	380	359	355	310	280	266	255	210	148	30	161.5
		280 x 560 x 130	280	266	255	210	560	535	505	490	100	30	120
		560 x 280 x 130	560	535	505	490	280	266	255	210	100	30	120
		330 x 430 x 180	330	310	266	250	430	410	386	350	150	30	160
		430 x 330 x 180	430	410	386	350	330	310	266	250	150	30	160
		380 x 560 x 180	380	366	355	310	560	535	505	490	150	30	160
		560 x 380 x 180	560	535	505	490	380	366	355	310	150	30	160

Water proof	IP 66/67
Impact proof	IK 07/08
Temperature	ABS : -40~+85 PC: -40~+120
Flammability	ABS : 94-HB PC : 94-HB, 94-V-0~5VA

PRODUCT CHARACTERISTICS

1. The enclosure is equipped with stainless steel hinge and draw latch ensuring a long lasting service life.
2. It is designed to give excellent air tightness. Hinge and draw latch are made of stainless steel.
3. Holes can be easily made on the enclosure.

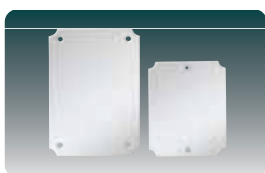


MODEL AND SIZE

Size (cover included)	Product Model				Plate Model		Plate Size	
	ABS		PC		Steel Mounting Plate 1.6mm	Plastic Mounting Plate 3~4.5 mm	M1	M2
Width x Length x Height (mm)	Grey Cover	Transparent Cover	Grey Cover	Transparent Cover				
190 x 190 x 130	BC-AGH-191913	BC-ATH-191913	BC-CGH-191913	BC-CTH-191913	1919 S	1919 P	159	159
190 x 280 x 130	BC-AGH-192813	BC-ATH-192813	BC-CGH-192813	BC-CTH-192813	1928 S	1928 P	159	248
280 x 190 x 130	BC-AGH-281913	BC-ATH-281913	BC-CGH-281913	BC-CTH-281913	2819 S	2819 P	159	248
190 x 280 x 180	BC-AGH-192818	BC-ATH-192818	BC-CGH-192818	BC-CTH-192818	1928 S	1928 P	159	248
280 x 190 x 180	BC-AGH-281918	BC-ATH-281918	BC-CGH-281918	BC-CTH-281918	2819 S	2819 P	159	248
190 x 380 x 130	BC-AGH-193813	BC-ATH-193813	BC-CGH-193813	BC-CTH-193813	1938 S	1938 P	159	348
380 x 190 x 130	BC-AGH-381913	BC-ATH-381913	BC-CGH-381913	BC-CTH-381913	3819 S	3819 P	159	348
190 x 380 x 180	BC-AGH-193818	BC-ATH-193818	BC-CGH-193818	BC-CTH-193818	1938 S	1938 P	159	348
380 x 190 x 180	BC-AGH-381918	BC-ATH-381918	BC-CGH-381918	BC-CTH-381918	3819 S	3819 P	159	348
280 x 280 x 130	BC-AGH-282813	BC-ATH-282813	BC-CGH-282813	BC-CTH-282813	2828 S	2828 P	248	248
280 x 340 x 130	BC-AGH-283413	BC-ATH-283413	BC-CGH-283413	BC-CTH-283413	2834 S	2834 P	248	308
340 x 280 x 130	BC-AGH-342813	BC-ATH-342813	BC-CGH-342813	BC-CTH-342813	3428 S	3428 P	308	248
280 x 380 x 130	BC-AGH-283813	BC-ATH-283813	BC-CGH-283813	BC-CTH-283813	2838 S	2838 P	248	348
380 x 280 x 130	BC-AGH-382813	BC-ATH-382813	BC-CGH-382813	BC-CTH-382813	3828 S	3828 P	248	348
280 x 380 x 180	BC-AGH-283818	BC-ATH-283818	BC-CGH-283818	BC-CTH-283818	2838 S	2838 P	248	348
380 x 280 x 180	BC-AGH-382818	BC-ATH-382818	BC-CGH-382818	BC-CTH-382818	3828 S	3828 P	348	348
280 x 560 x 130	BC-AGH-285613	BC-ATH-285613	BC-CGH-285613	BC-CTH-285613	2856 S		(232)	(535)
560 x 280 x 130	BC-AGH-562813	BC-ATH-562813	BC-CGH-562813	BC-CTH-562813	5828 S		(232)	(535)
330 x 430 x 180	BC-AGH-334318	BC-ATH-334318	BC-CGH-334318	BC-CTH-334318	3343 S	3343 P	(295)	(395)
430 x 330 x 180	BC-AGH-433318	BC-ATH-433318	BC-CGH-433318	BC-CTH-433318	4333 S	4333 P	(295)	(395)
380 x 560 x 180	BC-AGH-385618	BC-ATH-385618	BC-CGH-385618	BC-CTH-385618	3856 S		(345)	(535)
560 x 380 x 180	BC-AGH-563818	BC-ATH-563818	BC-CGH-563818	BC-CTH-563818	5638 S		(345)	(535)

560 x 280 x 130, 560 x 380 x 180 is for non water proof product.

ACCESSORIES



Steel mounting plate (Zinc plating)



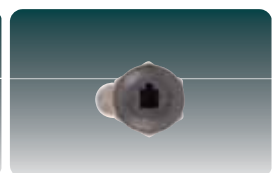
Plastic mounting plate (ABS)



Key ring (K 40)



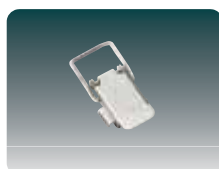
Lock (S K)



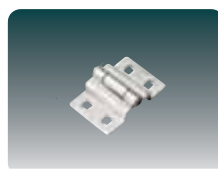
Plastic locker (P K)



Wall mounting bracket (B50)



Draw latch (M 65)



Hinge (H 65)



Stopper (M 22)



Vent (V60, V80)

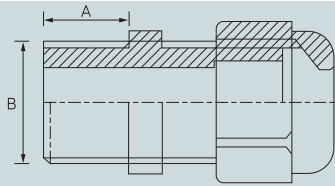


Plastic bracket (PB25)

BC-PG CABLE GLAND



BASE



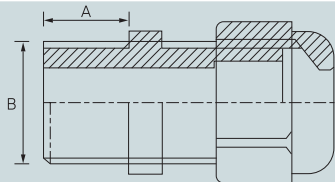
MODEL AND SIZE

Model No.			Size	A	B
Gray	Dark Gray	Black	Cable \varnothing mm	(mm)	(mm)
BC-PG7-G	BC-PG7-D	BC-PG7-B	3 ~ 6	8	12.5
BC-PG9-G	BC-PG9-D	BC-PG9-B	4 ~ 8	8	15.2
BC-PG11-G	BC-PG11-D	BC-PG11-B	5 ~ 10	8	18.6
BC-PG13.5-G	BC-PG13.5-D	BC-PG13.5-B	6 ~ 12	9	20.4
BC-PG16-G	BC-PG16-D	BC-PG16-B	10 ~ 14	10	22.5
BC-PG19-G	BC-PG19-D	BC-PG19-B	12 ~ 15	10	23.5
BC-PG21-G	BC-PG21-D	BC-PG21-B	13 ~ 18	10	28.3
BC-PG25-G	BC-PG25-D	BC-PG25-B	15 ~ 19	11	29.5
BC-PG29-G	BC-PG29-D	BC-PG29-B	18 ~ 25	12	37
BC-PG36-G	BC-PG36-D	BC-PG36-B	22 ~ 32	13.5	47
BC-PG42-G	BC-PG42-D	BC-PG42-B	30 ~ 38	14.5	54
BC-PG48-G	BC-PG48-D	BC-PG48-B	34 ~ 44	14	59
BC-PG63-G	BC-PG63-D	BC-PG63-B	42 ~ 50	27	70

BC-PG-L LONG CABLE GLAND



BASE



MODEL AND SIZE

Model No.	Size	A	B
Gray	Cable (\varnothing mm)	(mm)	(mm)
BC-PG7L-G	3.5 ~ 6	15	12
BC-PG9L-G	4 ~ 8	15	16
BC-PG11L-G	5 ~ 10	15	18
BC-PG13.5L-G	6 ~ 12	15	20
BC-PG16L-G	10 ~ 14	15	22

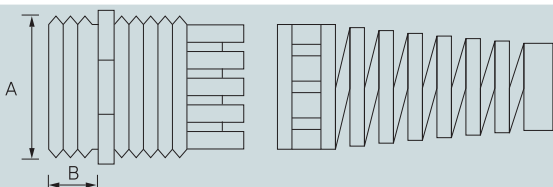
PRODUCT CHARACTERISTICS

Material : Nylon plastic
 Hermetic Seal : Nitrile rubber
 IP rating : IP66
 Ambient temperature : -20°C ~ 65°C
 Supply color : Grey

BC-BP-PG BEND PROOF CABLE GLAND



BASE



MODEL AND SIZE

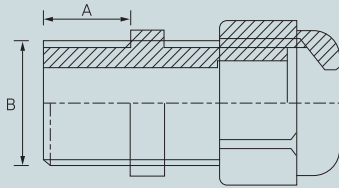
Article No.	Cable Range (mm)	A (mm)	Panel Mounting Hole
BC-BP-PG7	3 ~ 5.5	12.5	12.5 ~ 12.8
BC-BP-PG9	8 ~ 4.5	15.2	15.2 ~ 15.5
BC-BP-PG11	6 ~ 10	18.6	18.6 ~ 18.9
BC-BP-PG13.5	7 ~ 12.5	20.4	20.4 ~ 20.7
BC-BP-PG16	8.5 ~ 14	22.5	22.5 ~ 22.8
BC-BP-PG21	12.5 ~ 18	28.3	28.3 ~ 28.7

PRODUCT CHARACTERISTICS

Material : Nylon plastic
 Hermetic Seal : Nitrile rubber
 Ambient temperature : quiescent state -40°C to 100°C, short time to 120°C dynamic -20°C to 80°C, short time to 100°C
 Supply color : Grey

BC-MPG METAL CABLE GLAND


BASE


MODEL AND SIZE

Article No.	Thread Dimension	Clamping range (mm)	A (mm)	B (mm)	Wrench size (mm)
BC-MPG7	PG7	3 ~ 6.5	5	12.5	14
BC-MPG9	PG9	4 ~ 8	6	15.2	17
BC-MPG11	PG11	5 ~ 10	6	18.6	20
BC-MPG13	PG13.5	6 ~ 12	7	20.4	22
BC-MPG16	PG16	8 ~ 14	7	22.5	24
BC-MPG21	PG21	13 ~ 18	8	28.3	30
BC-MPG29	PG29	18 ~ 25	8	37	40
BC-MPG36	PG36	22 ~ 32	9	47	50
BC-MPG42	PG42	30 ~ 38	9	54	60
BC-MPG48	PG48	37 ~ 44	10	59.3	65

PRODUCT CHARACTERISTICS

Material : Body : Nickel-plated brass seal : Polymide 66, Sealing : NBR

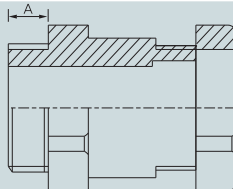
Protection degree : Within the clamping range, its protection degree can reach IP68.

Properties : Succeed in the experiment of IEC-60077-1999 resistance vibration and impact.

Temperature Range : Stat : Min-40°C, Max 100°C, Short-term 120°C
 Dyn. : Min-20°C, Max 80°C, Short-term 100°C

BC-PKM-P PKM METAL CABLE GLAND


BASE


MODEL AND SIZE

Article No.	Thread Dimension	Clamping range (mm)	A (mm)	Wrench size (mm)
BC-PKM-P7	PG7	6 ~ 8	5	15
BC-PKM-P9	PG9	8 ~ 10	6	17
BC-PKM-P11	PG11	10 ~ 12	6	22
BC-PKM-P13	PG13.5	12 ~ 14	7	24

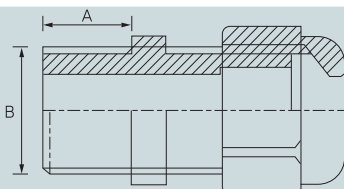
PRODUCT CHARACTERISTICS

Material : Body : nickel-plated brass Sealing : NBR

Protection degree : Within the clamping range, its protection degree can reach IP65

BC-HSK-EX-P EX PLASTIC CABLE GLAND


BASE


MODEL AND SIZE

Article No.	Clamping range (mm)	A (mm)	B (mm)	Wrench size (mm)
BC-HSK-EX-P7	3 ~ 6.5	8	12.5	15
BC-HSK-EX-P9	4 ~ 8	8	15.2	19
BC-HSK-EX-P11	5 ~ 10	8	18.6	22
BC-HSK-EX-P13	6 ~ 12	9	20.4	24
BC-HSK-EX-P16	8 ~ 14	10	22.5	27
BC-HSK-EX-P21	13 ~ 18	11	28.3	33
BC-HSK-EX-P29	18 ~ 25	11	37	42
BC-HSK-EX-P36	22 ~ 32	13	47	52
BC-HSK-EX-P42	30 ~ 38	14	54	60
BC-HSK-EX-P48	37 ~ 44	15	59.3	65

PRODUCT CHARACTERISTICS

Material : Body : Polymide 66, Sealing : NBR

Color : Grey white (RAL 7035), Black (RAL 9005)

Protection degree : Using suitable 0-sealings within the clamping range, its protection degree can reach IP68

Temperature Range : Stat : Min-40°C, Max 100°C, Short-term 120°C
 Dyn. : Min-20°C, Max 80°C, Short-term 100°C

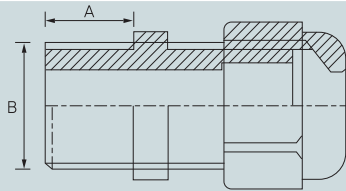
Properties : V2(94), free of halogen, phosphor and cadmium passed RoHS UV-resistance, ageing-resistance certificates

EX degree : Exe II T5 Certificate No. : CNE07.0311U

BC-HSM-EX-P EX METAL CABLE GLAND



BASE



MODEL AND SIZE

Article No.	Thread Dimension	Clamping range (mm)	A (mm)	B (mm)	Wrench size (mm)
BC-HSM-EX-P7	PG7	3 ~ 6,5	5	12,5	14
BC-HSM-EX-P9	PG9	4 ~ 8	6	15,2	17
BC-HSM-EX-P11	PG11	5 ~ 10	6	18,6	20
BC-HSM-EX-P13	PG13.5	6 ~ 12	7	20,4	22
BC-HSM-EX-P16	PG16	8 ~ 14	7	22,5	24
BC-HSM-EX-P21	PG21	13 ~ 18	8	28,3	30
BC-HSM-EX-P29	PG29	18 ~ 25	8	37	40
BC-HSM-EX-P36	PG36	22 ~ 32	9	47	50
BC-HSM-EX-P42	PG42	30 ~ 38	9	54	60
BC-HSM-EX-P48	PG48	37 ~ 44	10	59,3	65

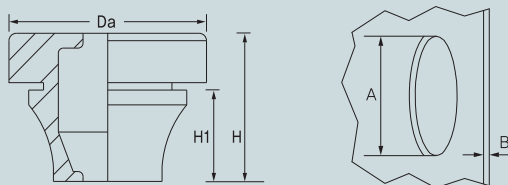
PRODUCT CHARACTERISTICS

Material : Body : Nickel-plated brass seal : Polymide 66, Sealing : NBR
 Protection degree : Within the clamping range, its protection degree can reach IP68.
 Properties : Succeeded in the experiment of IEC-60077-1999 resistance to vibration and impact.
 Temperature Range : Stat : Min-40°C, Max 100°C, Short-term 120°C
 Dyn. : Min-20°C, Max 80°C, Short-term 100°C
 Ex degree : Exe II T5 Certifacte No : CNEx07.03126

BC-RG-PG RUBBER GROMMET PG



BASE



MODEL AND SIZE

Article No.	Thread AD (mm)	Ømm (cable)	A (mm)	B (mm)	Da (mm)	H (mm)	H1 (mm)
BC-RG-PG7	12,5	3 ~ 5	13	0,5 ~ 2	20	12,6	5,4
BC-RG-PG9	15,2	5 ~ 7	16	1 ~ 4	21	17,8	10,3
BC-RG-PG11	18,6	7 ~ 10	19	1 ~ 4	24	19,8	12,7
BC-RG-PG16	22,5	10 ~ 14	23	1 ~ 4	28	21,6	14,7
BC-RG-PG21	28,3	14 ~ 20	29	1 ~ 4	35	24,6	17,6
BC-RG-PG29	37	20 ~ 26	38	1 ~ 4	46	28,5	20
BC-RG-PG36	47	26 ~ 35	48	1 ~ 4	58	34,9	23,9

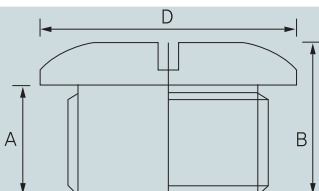
PRODUCT CHARACTERISTICS

Mode of Protection : IP67 acc. to EN 60529
 Temperature Range : -40°C ... +100°C
 Test standard : EMKO TUI(03-SEC) FI001/84
 Semko report : 410375
 Halogen - Free

BC-SP-PG SCREW PLUG



BASE



MODEL AND SIZE

Article No.	A (mm)	B (mm)	D (mm)
BC-SP-PG7	8,5	12,5	15
BC-SP-PG9	8,5	13	19
BC-SP-PG11	9	13	22
BC-SP-PG13.5	9	13	25
BC-SP-PG16	10,5	15	27
BC-SP-PG21	8,5	13,5	33
BC-SP-PG29	11,5	16	44
BC-SP-PG36	13,5	18	55
BC-SP-PG42	13,5	18,5	62
BC-SP-PG48	14,5	19,5	68

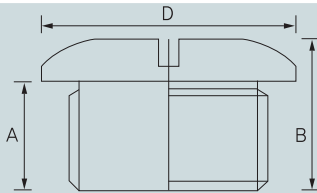
PRODUCT CHARACTERISTICS

Material : nylon plastic
 Protection degree : IP54
 Ambient temperature : -40°C to 100°C
 Supply color : Grey, Black

BC-MSP-PG METAL SCREW PLUG



BASE



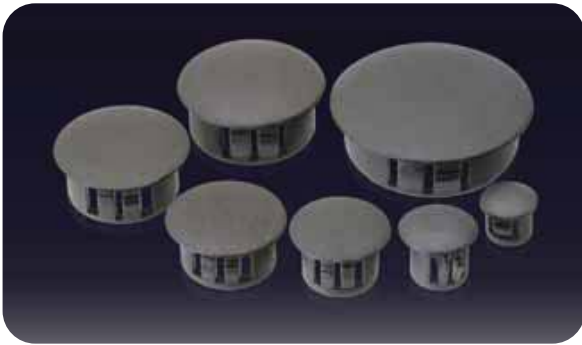
MODEL AND SIZE

Article No.	A (mm)	B (mm)	Wrench size (mm)
BC-MSP-PG7	5	8	14
BC-MSP-PG9	6	9	17
BC-MSP-PG11	6	9	20
BC-MSP-PG13.5	6.5	9.5	22
BC-MSP-PG16	6.5	9.5	24
BC-MSP-PG21	7	11	30
BC-MSP-PG29	8	12	39
BC-MSP-PG36	9	15	50
BC-MSP-PG42	10	16	57
BC-MSP-PG48	10	16	64

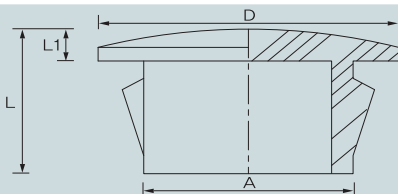
PRODUCT CHARACTERISTICS

Material : Nickel-plated brass
 Protection degree : IP68

BC-HP-PG HOLE PLUG



BASE



MODEL AND SIZE

Article No.	A	D	L1	L
	Aperture of the steel board	OD of the plug	Thickness	Total length
BC-HP-PG8	7.8	11.9	1.6	8
BC-HP-PG10	9.5	13	1.6	10.5
BC-HP-PG13	12.7	16.9	1.6	10.5
BC-HP-PG16	15.9	19.8	1.6	10.5
BC-HP-PG19	19	22.9	1.6	10.5
BC-HP-PG22	22.2	24.9	1.6	11.5
BC-HP-PG26	25.5	28.3	1.6	11.5
BC-HP-PG30	30	34.2	1.6	11.5

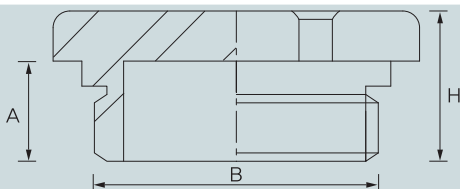
PRODUCT CHARACTERISTICS

Material : PA66, 94-V2
 Color : Black (RAL 9005)
 Temperature Range : Min -40°C, Max 100°C
 Application : To cover the spares holes, by pushing the plug with your hand, you can finish the assembly easily without additional tools, suitable for the steel board below 3.2mm

BC-DPM-P HEXAGON PLUG



BASE



MODEL AND SIZE

Article No.	Thread Dimension	A (mm)	B (mm)	Wrench size (mm)	H (mm)
BC-DPM-P7	PG7	5	12.5	14	8
BC-DPM-P9	PG9	6	15.2	17	9
BC-DPM-P11	PG11	6	18.6	20	9
BC-DPM-P13	PG13.5	7	20.4	22	10
BC-DPM-P16	PG16	7	22.5	24	10
BC-DPM-P21	PG21	7	28.3	30	11
BC-DPM-P29	PG29	8	37	40	12
BC-DPM-P36	PG36	9	47	50	15
BC-DPM-P42	PG42	10	54	60	16
BC-DPM-P48	PG48	10	59.3	65	16

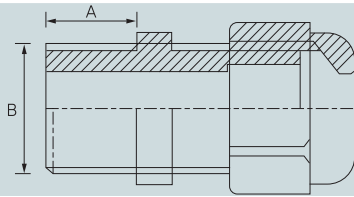
PRODUCT CHARACTERISTICS

Material : Nickel-plated brass
 Protection degree : IP68

BC-M CABLE GLAND



BASE



MODEL AND SIZE

Model No.	Size (Cable Ø)	A (mm)	B (mm)
BC-M-12	3 ~ 6.5	8	12
BC-M-16	4 ~ 8	8	16
BC-M-20	6 ~ 12	9	20
BC-M-25	13 ~ 18	11	25
BC-M-32	18 ~ 25	11	32
BC-M-40	22 ~ 32	13	40
BC-M-50	32 ~ 38	13	50
BC-M-63	37 ~ 44	14	63

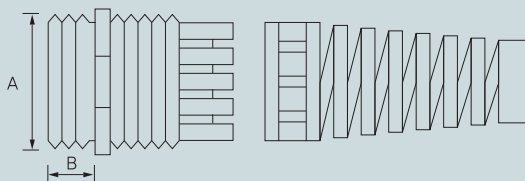
PRODUCT CHARACTERISTICS

Material : Nylon plastic
 Hermetic seal: Nitrile rubber
 IP rating: IP66
 Ambient temperature : -20°C ~ 65°C

BC-BP-M BEND PROOF CABLE GLAND



BASE



MODEL AND SIZE

Model No.	Size (Cable Ø)	A (mm)	B (mm)
BC-BP-M-12	3 ~ 6.5	8	12
BC-BP-M-16	4 ~ 8	8	16
BC-BP-M-20	6 ~ 12	9	20
BC-BP-M-25	13 ~ 18	11	25

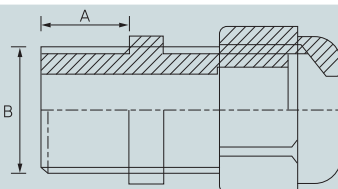
PRODUCT CHARACTERISTICS

Material : Nylon plastic
 Hermetic seal: Nitrile rubber
 Ambient temperature : quiescent state -40°C to 100°C, short time to 120°C, dynamic -20°C to 80°C, short time to 100°C
 Supply color : Grey

BC-MM METAL CABLE GLAND



BASE



MODEL AND SIZE

Model No.	Size (Cable Ø)	A (mm)	B (mm)
BC-MM-12	3 ~ 6.5	6.5	12
BC-MM-16	4 ~ 8	6	16
BC-MM-20	6 ~ 12	6	20
BC-MM-25	13 ~ 18	7	25
BC-MM-32	18 ~ 25	8	32
BC-MM-40	22 ~ 32	8	40
BC-MM-50	32 ~ 38	9	50
BC-MM-63	37 ~ 44	10	63

PRODUCT CHARACTERISTICS

Material : Body : nickel-plated brass Seal : Polyimide 66, Sealing : NBR
 Protection degree: within the clamping range, its protection degree can reach IP68.
 Properties : succeed in the experiment of IEC-60077-1999 resistance to vibration and impact.
 Temperature range : Stat: Min -40°C, Max 100°C, Short-term 120°C
 Dyn. : Min -20°C, Max 80°C, Short-term 100°C

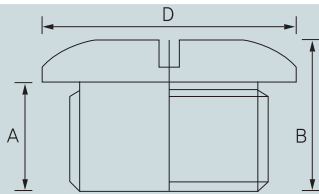
BC-SP-M SCREW PLUG



MODEL AND SIZE

Article No.	A (mm)	B (mm)	D (mm)
BC-SP-M-12	8,5	12,5	15
BC-SP-M-16	8,5	13	19
BC-SP-M-18	9	13	22
BC-SP-M-20	9	13	25
BC-SP-M-22	10,5	15	27
BC-SP-M-25	10,5	15,5	30
BC-SP-M-27	10,5	15,5	33
BC-SP-M-32	10,5	16	38
BC-SP-M-40	11,5	16	46
BC-SP-M-50	13,5	18	56
BC-SP-M-63	14	19	68

BASE



PRODUCT CHARACTERISTICS

Material : Nylon plastic
 Protection degree : IP54
 Ambient temperature : -40°C to 100°C
 Supply color : Grey, Black

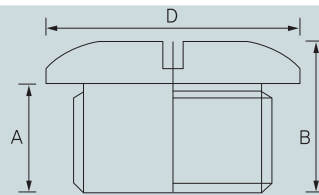
BC-MSP-M METAL SCREW PLUG



MODEL AND SIZE

Article No.	A (mm)	B (mm)	Wrench size (mm)
BC-MSP-M12	5	8	14
BC-MSP-M16	6	9	18
BC-MSP-M18	6	9	20
BC-MSP-M20	6,5	9,5	22
BC-MSP-M22	6,5	9,5	24
BC-MSP-M25	7	11	28
BC-MSP-M32	8	12	35
BC-MSP-M40	9	15	44
BC-MSP-M50	10	16	54
BC-MSP-M63	10	16	70

BASE

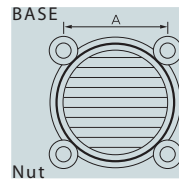


PRODUCT CHARACTERISTICS

Material : Nickel-plated brass
 Protection degree : IP68



BC-V60, V80 VENT



MODEL AND SIZE

Article No.	A	Processing Size	Ventilation Fan Size
BC-V 60	50 ± 0.3 mm	63 ~ 65 ∅	60 ∅
BC-V 80	71.5 ± 0.3 mm	88 ~ 90 ∅	80 ∅

PRODUCT CHARACTERISTICS

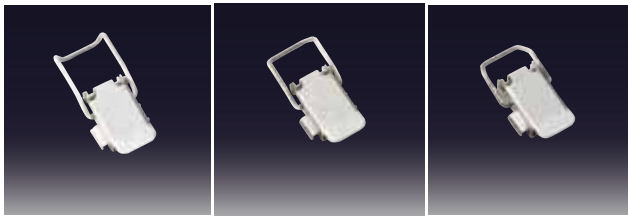
1. It is easy to dissipate heat from inside of box to outside.
2. It is easy to install cooling fan inside the box.
3. It is designed to prevent penetration of rain.

DRAW LATCH

Material : SUS 304
BC-L75

BC-L65

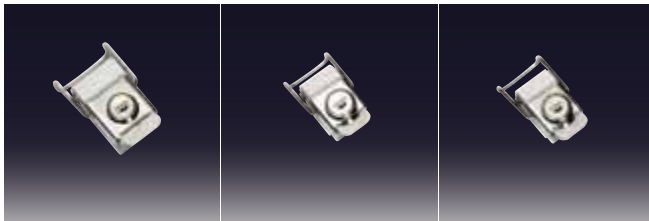
BC-L55



DRAW LATCH LOCK

Material : SUS 304

Use only P-type

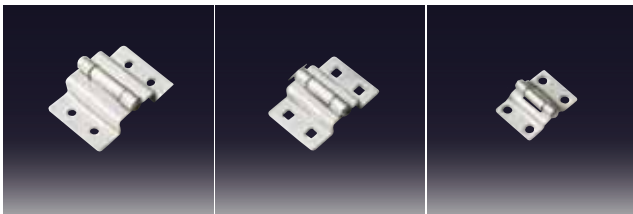


HINGE

Material : SUS 304
BC-H75

BC-H65

BC-H55



DUAL DOOR

Material : ABS
Including : frame, pillar, hinge, handle

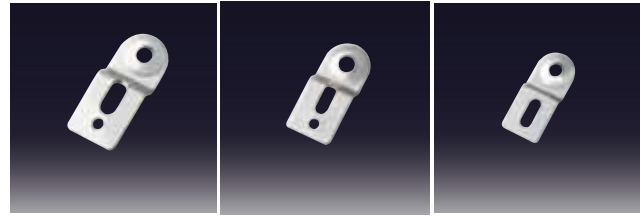


WALL MOUNTING BRACKET

Material : SUS 304
BC-B60

BC-B50

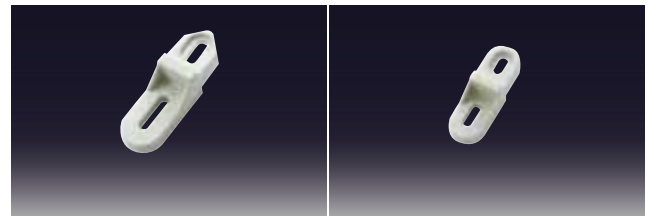
BC-B40



PLASTIC BRACKET

Material : PC/ABS
PB25

PB20



DUCT RING

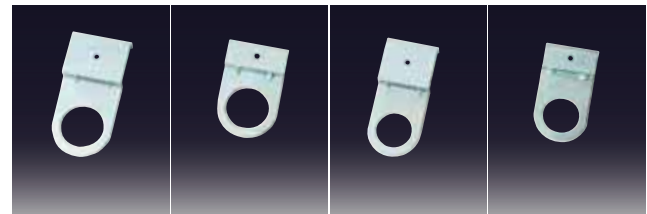
Material : Steel (zinc plating)

BC-D30L

BC-D30S

BC-D25L

BC-D25S



PLASTIC BRACKET

Material : SUS 304

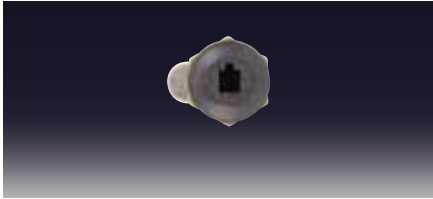
BC-ES



PLASTIC LOCK

Material : Nylon

Available for all hinge type enclosure

**LOCK**

Material : SUS 304 etc.

Available for all hinge type enclosure

**KEY RING**

Material : SUS 304

Available for all hinge type enclosure

**COVER BOLT**

Material : ABS

CB 20-

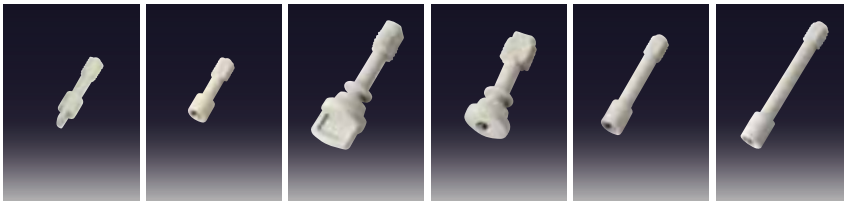
CB 20

CB 28-

CB 28

CB 35

CB 50

**DUAL DOOR MOUNTING PLATE**

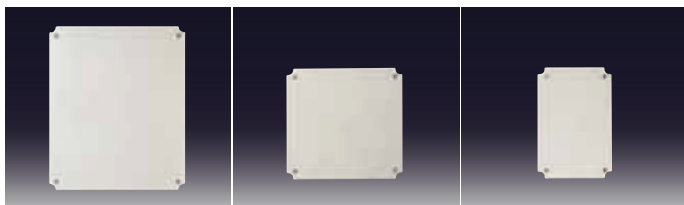
Material : Aluminium

Medium and large plastic enclosure

**PLASTIC MOUNTING PLATE**

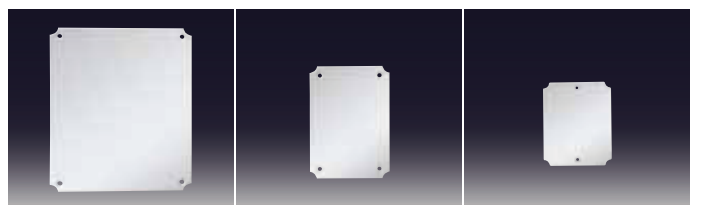
Material : ABS

All of plastic enclosure

**STEEL MOUNTING PLATE**

Material : Steel (Zinc plating)

All of plastic and aluminium enclosure





OFFICE ADDRESS
9E PIERMARK DRIVE
ALBANY, AUCKLAND
NEW ZEALAND

POSTAL ADDRESS
PO Box 305489
TRITON PLAZA
ALBANY, AUCKLAND
NEW ZEALAND


PHONE: +64 9 477 0177

Fax: +64 9 479 9163

Online Catalogue: nz.wellforces.com

Online Resources: nz.wellforces.com/resources

contact@wellforces.co.nz

 www.facebook.com/wellforces

 [@Wellforces](https://twitter.com/Wellforces)

