

Seal:

ELIZABETH NEWLAND
Registered Landscape Architect
LA0001288
State of Florida

Consultants:

Revisions:

Dockmaster Building
GARRISON BIGHT
KEY WEST, FLORIDA

Drawing Size: 24x36 Project #: _____
Drawn By: EN Checked By: EN

Title:
EXISTING
TREE & PALM
DISPOSITION
PLAN

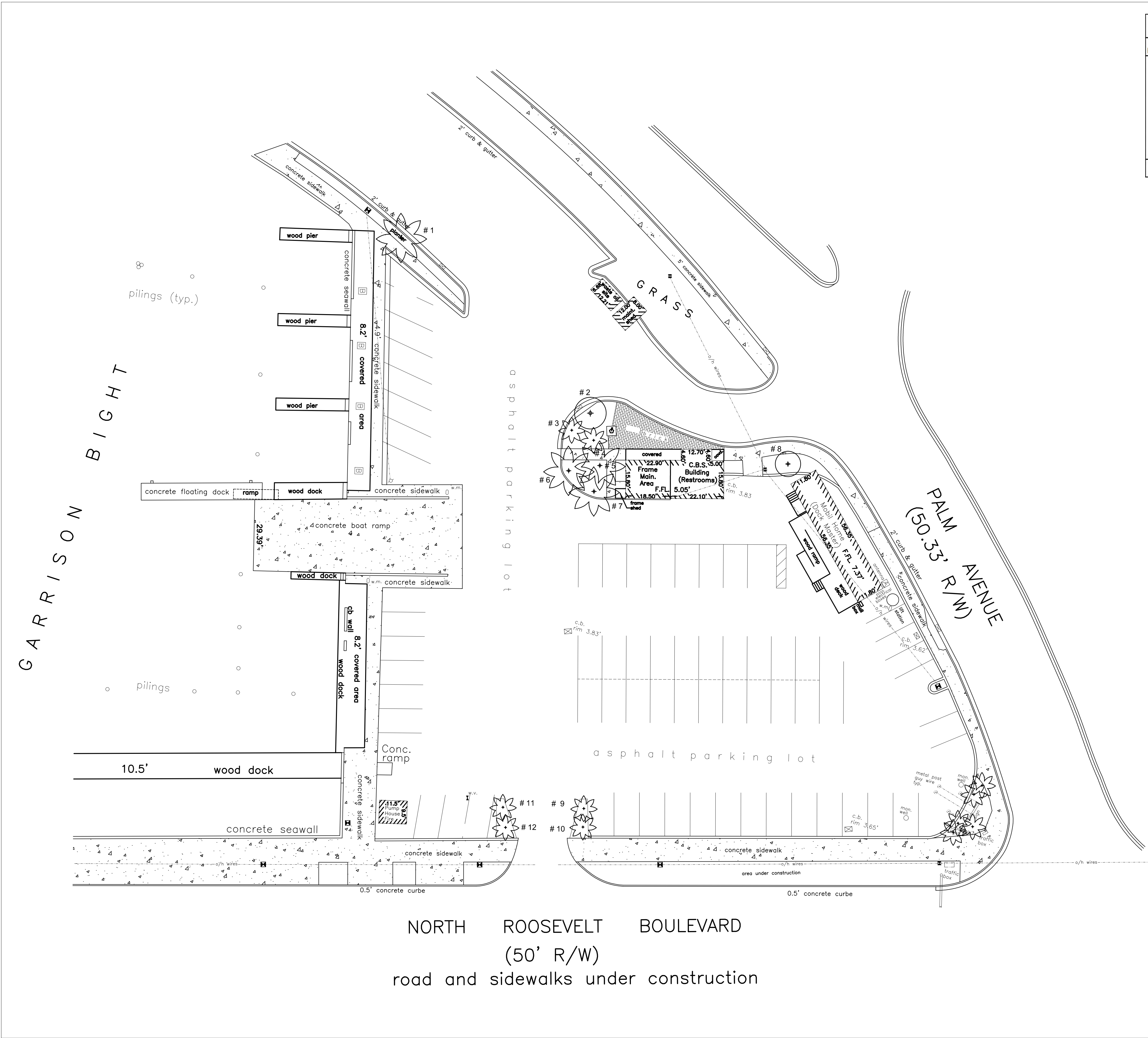
Sheet Number:

L-1.0

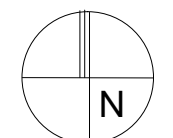
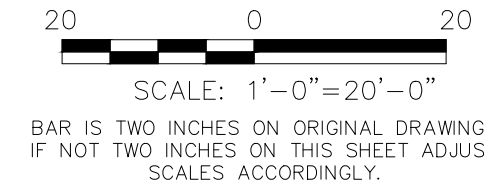
Date: FEBRUARY 28, 2013

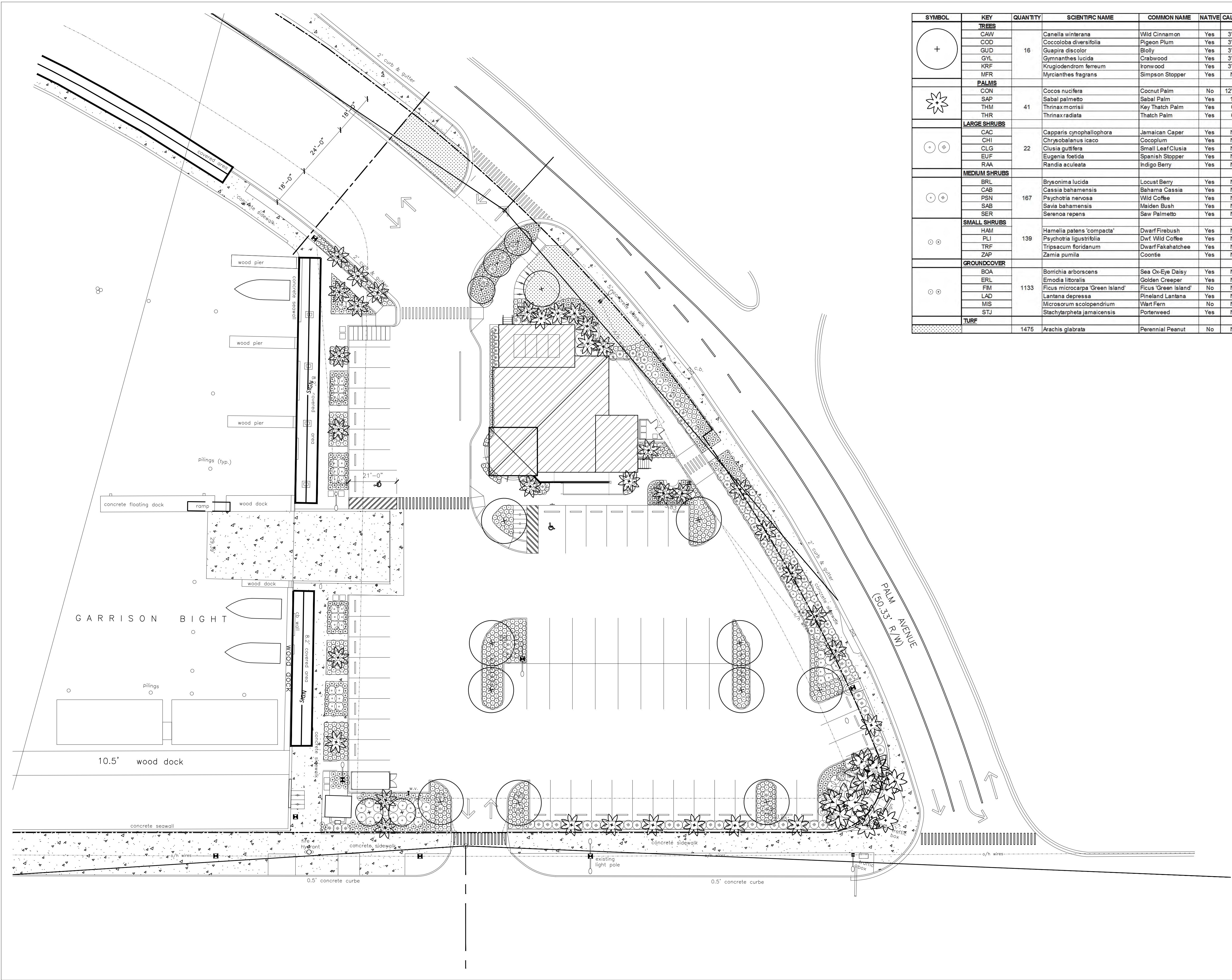
City of Key West Dockmaster Building Existing Tree Disposition Schedule							
NUMBER	BOTANICAL NAME	COMMON NAME	HEIGHT	SPREAD	CALIPER	CONDITION	STATUS
1	Cocos nucifera	Coconut	20'-25'	15'-20'	8"-10"	Poor/Double	Remove
2	Cordia sebestena	Geiger Tree	15'-20'	10'-15'	4"-6"	Poor/V Crotch	Remove
3	Thrinax monisii	Key Thatch Palm	8'-10'	4'-6"	4"-6"	Fair	Transplant
4	Thrinax monisii	Key Thatch Palm	8'-10'	4'-6"	4"-6"	Fair	Transplant
5	Cocos nucifera	Coconut	20'-25'	15'-20'	8"-10"	Fair	Transplant
6	Cocos nucifera	Coconut	25'-30'	15'-20'	8"-10"	Poor	Remove
7	Cocos nucifera	Coconut	20'-25'	15'-20'	8"-10"	Fair	Transplant
8	Plumeria rubra	Frangipani	10'-12'	10'-12'	4"-6"	Poor	Remove
9	Thrinax radiata	Thatch Palm	10'-12'	8'-10"	4"-6"	Good	Transplant
10	Thrinax radiata	Thatch Palm	10'-12'	8'-10"	4"-6"	Good	Transplant
11	Thrinax radiata	Thatch Palm	10'-12'	8'-10"	4"-6"	Good	Transplant
12	Thrinax radiata	Thatch Palm	10'-12'	8'-10"	4"-6"	Good	Transplant

All Shrubs/Vegetation/Stumps Not Shown On This Schedule Within the Project Limits Are To Be Removed



NOTE: LOCATION OF EXISTING TREES AND PALMS ARE APPROXIMATE ONLY





SYMBOL	KEY	QUANTITY	SCIENTIFIC NAME	COMMON NAME	NATIVE	CALIPER	HEIGHT	CANOPY	CONTAINER	SPACING	CONDITION
+	TREES										
	CAW	16	Canella winterana	Wild Cinnamon	Yes	3'-4"	12'-14"	8'-10"	100 Gal	As Shown	5' CT
	COD		Coccoloba diversifolia	Pigeon Plum	Yes	3'-4"	12'-14"	8'-10"	100 Gal	As Shown	5' CT
	GUD		Guapira discolor	Blolly	Yes	3'-4"	12'-14"	8'-10"	100 Gal	As Shown	5' CT
	GYL		Gymnanthes lucida	Crabwood	Yes	3'-4"	12'-14"	8'-10"	100 Gal	As Shown	5' CT
	KRF		Krugiodendrom ferreum	Ironwood	Yes	3'-4"	12'-14"	8'-10"	100 Gal	As Shown	5' CT
MFR		Myrcianthes fragrans	Simpson Stopper	Yes	NA	12'-14"	8'-10"	100 Gal	As Shown	5' CT	
*	PALMS										
	CON	41	Cocos nucifera	Coconut Palm	No	12'-16"	20'-25' OA	15'-20'	B&B	As Shown	Transplant on Site
	SAP		Sabal palmetto	Sabal Palm	Yes	12"	10'-12' OA	8'-10"	B&B	As Shown	Slick with Boots on Top
	THM		Thrinax morrisii	Key Thatch Palm	Yes	6"	8'-10"	4'-6"	B&B	As Shown	Transplant on Site
	THR		Thrinax radiata	Thatch Palm	Yes	6"	10'-12'	4'-6"	B&B	As Shown	Transplant on Site
⊙	LARGE SHRUBS										
	CAC	22	Capparis cynophallophora	Jamaican Caper	Yes	NA	6'-8"	3'-4"	45 Gal	As Shown	Shrub Type
	CHI		Chrysobalanus icaco	Coccolum	Yes	NA	24'-36"	24'-36"	7 Gal	As Shown	Shrub Type
	CLG		Clusia guttifer	Small Leaf Clusia	Yes	NA	6'-8"	3'-4"	45 Gal	As Shown	Shrub Type
	EUF		Eugenia foetida	Spanish Stopper	Yes	NA	6'-8"	3'-4"	45 Gal	As Shown	Shrub Type
	RAA		Randia aculeata	Indigo Berry	Yes	NA	6'-8"	3'-4"	45 Gal	As Shown	Shrub Type
⊙	MEDIUM SHRUBS										
	BRL	167	Brysonima lucida	Locust Berry	Yes	NA	24'-36"	24'-36"	7 Gal	As Shown	
	CAB		Cassia bahamensis	Bahama Cassia	Yes	NA	24'-36"	24'-36"	7 Gal	As Shown	
	PSN		Psychotria nervosa	Wild Coffee	Yes	NA	24'-36"	24'-36"	7 Gal	As Shown	
	SAB		Savia bahamensis	Maiden Bush	Yes	NA	24'-36"	24'-36"	7 Gal	As Shown	
	SER		Serenoa repens	Saw Palmetto	Yes	NA	24'-36"	24'-36"	15 Gal	As Shown	
⊙	SMALL SHRUBS										
	HAM	139	Hamelia patens 'compacta'	Dwarf Firebush	Yes	NA	18"-24"	18"-24"	3 Gal	As Shown	
	PLI		Psychotria ligustrifolia	Dwf. Wild Coffee	Yes	NA	18"-24"	18"-24"	3 Gal	As Shown	
	TRF		Tripsacum floridanum	Dwarf Fakahatchee	Yes	NA	18"-24"	18"-24"	3 Gal	As Shown	
	ZAP		Zamia pumila	Coontie	Yes	NA	18"-24"	18"-24"	3 Gal	As Shown	
⊙	GROUND COVER										
	BOA	1133	Borrhchia arborescens	Sea Ox-Eye Daisy	Yes	NA	12"-18"	12"-18"	1 Gal	As Shown	
	ERL		Emodia littoralis	Golden Creeper	Yes	NA	12"-18"	12"-18"	1 Gal	As Shown	
	FIM		Ficus microcarpa 'Green Island'	Ficus 'Green Island'	No	NA	18"-24"	18"-24"	3 Gal	As Shown	
	LAD		Lantana depressa	Pineand Lantana	Yes	NA	12"-18"	12"-18"	1 Gal	As Shown	
	MIS		Microsorium scolopendrium	Wart Fern	No	NA	12"-18"	12"-18"	1 Gal	As Shown	
STJ		Stachytarpheta jamaicensis	Porterweed	Yes	NA	18"-24"	18"-24"	1 Gal	As Shown		
⊙	TURF	1475	Arachis glabrata	Perennial Peanut	No	NA			SF		

ELIZABETH NEWLAND
 LANDSCAPE ARCHITECTURE, LLC

2525 Ponce de Leon Blvd., Suite 300
 Coral Gables, Florida 33134
 305.481.6301
 liznewland@bellsouth.net

Seal:
 ELIZABETH NEWLAND
 Registered Landscape Architect
 # LA0001288
 State of Florida

Consultants:

Revisions:

Dockmaster Building
 GARRISON BIGHT
 KEY WEST, FLORIDA

Drawing Size: 24x36 Project #: _____
 Drawn By: EN Checked By: EN
 Title: **LANDSCAPE PLANTING PLAN**
 Sheet Number: **L-2.0**
 Date: FEBRUARY 28, 2013

