

NOTE: FOUNDATIONS BENEATH THE SURFACE ARE NOT SHOWN. MEASURED DIMENSIONS EQUAL PLATTED OR DESCRIBED DIMENSIONS UNLESS INDICATED OTHERWISE.
THE FOLLOWING IS A LIST OF ABBREVIATIONS THAT MAY BE FOUND ON THIS SHEET.

- | | | | | | | | | | | | | | | | | | | | | | | | | | | | | | | | | | | | | | | | | | | | |
|---------------------------|---------------|-----------------------------------|---------------------|---------------------------|------------------|-----------------------|------------------------|------------------|-----------------------------|--|-----------------------|---------------------------|----------------------|---------------------|-----------------------|-------------------------------|-------------------------------|------------------------|--------------------------|-----------------------------|-----------------------------|------------------------------|------------------------------------|-----------------------|------------|------------------------|---------------------------------|----------------|---------------------------|-------------------|--------------------|-----------------|-------------------|---------------|------------------|------------------------|----------------|-----------------|-------------------|------------------|-----------------------|--------------------------------------|------------------|
| BFP = BACK-FLOW PREVENTER | BO = BLOW OUT | C 4 G = 2" CONCRETE CURB & GUTTER | CB = CONCRETE BLOCK | CBW = CONCRETE BLOCK WALL | CL = CENTERLINE | CLF = CHAINLINK FENCE | CM = CONCRETE MONUMENT | CONC = CONCRETE | CPP = CONCRETE POWER POLE | CRVD = COVERED | DELTA = CENTRAL ANGLE | DEASE = DRAINAGE EASEMENT | EL = ELEVATION | ENCL = ENCLOSURE | EP = EDGE OF PAVEMENT | FF = FINISHED FLOOR ELEVATION | FH = FIRE HYDRANT | FI = FENCE INSIDE | FL = FLOW LINE | FND = FOUND | FOL = FENCE OUTSIDE | FOL = FENCE ON LINE | | | | | | | | | | | | | | | | | | | | | |
| GUY = GUY WIRE | HB = HOSE BIB | IP = IRON PIPE | IR = IRON ROD | L = ARC LENGTH | LS = LANDSCAPING | MB = MAILBOX | MEAS = MEASURED | MF = METAL FENCE | MHWL = MEAN HIGH WATER LINE | NGVD = NATIONAL GEODETIC VERTICAL DATUM (1929) | NTS = NOT TO SCALE | OH = ROOF OVERHANG | OHW = OVERHEAD WIRES | PC = POINT OF CURVE | PM = PARKING METER | PCC = POINT OF COMPOUND CURVE | PCP = PERMANENT CONTROL POINT | PK = PARKER KALON NAIL | POB = POINT OF BEGINNING | POI = POINT OF INTERSECTION | POC = POINT OF COMMENCEMENT | PRC = POINT OF REVERSE CURVE | PRM = PERMANENT REFERENCE MONUMENT | PT = POINT OF TANGENT | R = RADIUS | RW = RIGHT OF WAY LINE | SSCO = SANITARY SEWER CLEAN-OUT | SW = SIDE WALK | TBM = TEMPORARY BENCHMARK | TOB = TOP OF BANK | TOS = TOE OF SLOPE | TR = TOP OF RIM | TS = TRAFFIC SIGN | TYP = TYPICAL | UIR = UNREADABLE | UIE = UTILITY EASEMENT | WD = WOOD DECK | WF = WOOD FENCE | WL = WOOD LANDING | WM = WATER METER | WPP = WOOD POWER POLE | WRACK LINE = LINE OF DEBRIS ON SHORE | WV = WATER VALVE |

NOTE: LEGAL DESCRIPTIONS HAVE BEEN FURNISHED BY THE CLIENT OR HIS/HER REPRESENTATIVE, PUBLIC RECORDS HAVE NOT BEEN RESEARCHED BY THE SURVEYOR TO DETERMINE THE ACCURACY OF THESE DESCRIPTIONS NOR HAVE ADJOINING PROPERTIES BEEN RESEARCHED TO DETERMINE OVERLAPS OR HIATUS. THE BOLD LINE SHOWN HEREON REPRESENTS THE SURVEYOR'S OPINION OF THE DEED LINES. THE MEAN HIGH WATER LINE WAS NOT DETERMINED FOR THIS SURVEY, THE APPARENT MEAN HIGH WATER LINE IS SHOWN FOR REFERENCE ONLY.

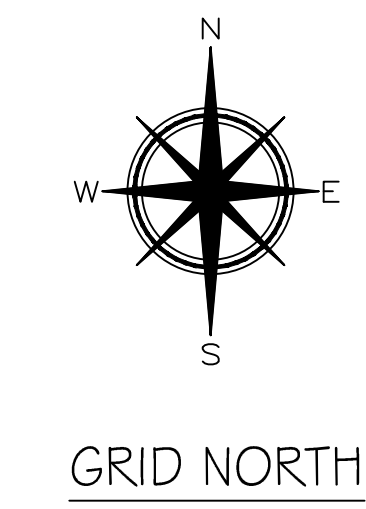
SURVEYORS CERTIFICATION

I HEREBY CERTIFY THAT THIS SURVEY WAS MADE UNDER MY RESPONSIBLE CHARGE AND MEETS THE MINIMUM TECHNICAL STANDARDS AS SET FORTH IN CHAPTER 5J-17.05, FLORIDA ADMINISTRATIVE CODE, PURSUANT TO SECTION 472.027, FLORIDA STATUTES AND COMPLIES WITH CHAPTER 177, PART II, FLORIDA STATUTES.

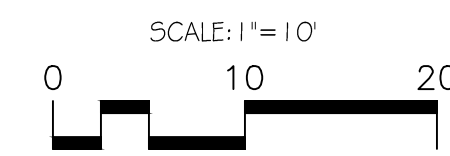
SIGNED _____

ERIC A. ISAACS, PSM #6783, PROFESSIONAL SURVEYOR AND MAPPER, LB# 7847

NOT VALID WITHOUT THE SIGNATURE AND THE RAISED SEAL OF A FLORIDA SURVEYOR AND MAPPER



GRID NORTH

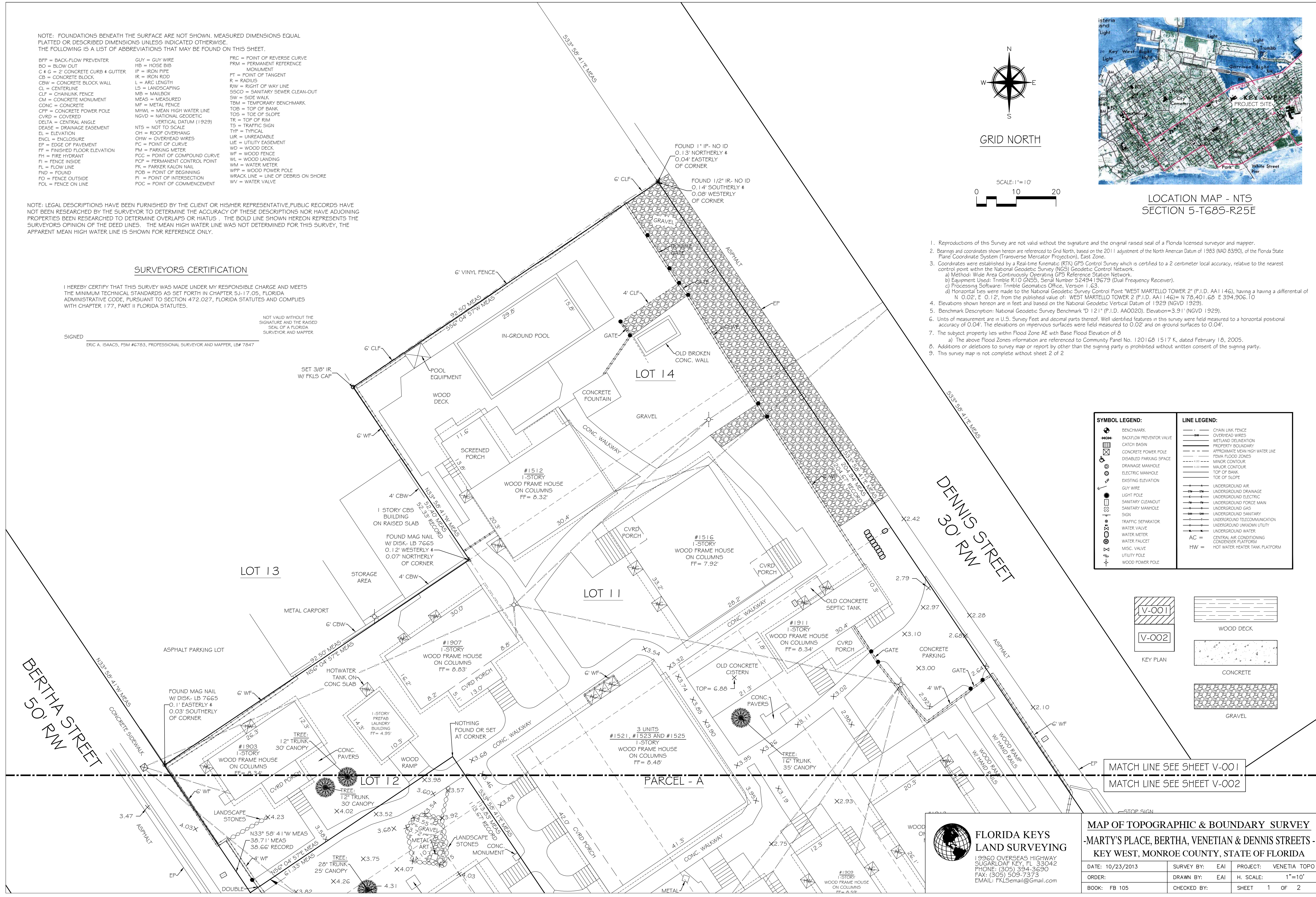


LOCATION MAP - NTS SECTION 5-T685-R25E

- Reproductions of this Survey are not valid without the signature and the original raised seal of a Florida licensed surveyor and mapper.
- Bearings and coordinates shown hereon are referenced to Grid North, based on the 2011 adjustment of the North American Datum of 1983 (NAD 83/90), of the Florida State Plane Coordinate System (Transverse Mercator Projection), East Zone.
- Coordinates were established by a Real-time Kinematic (RTK) GPS Control Survey which is certified to a 2 centimeter local accuracy, relative to the nearest control point within the National Geodetic Survey (NGS) Geodetic Control Network.
 - Method: Wide Area Continuously Operating GPS Reference Station Network.
 - Equipment Used: Trimble R10 GNSS, Serial Number 5249419679 (Dual Frequency Receiver).
 - Processing Software: Trimble Geomatics Office, Version 1.63.
 - Horizontal ties were made to the National Geodetic Survey Control Point "WEST MARTELLO TOWER 2" (P.I.D. AA1146), having a differential of N 0.02', E 0.12', from the published value of: WEST MARTELLO TOWER 2 (P.I.D. AA1146) = N 78,401.68' E 394,906.10'
- Elevations shown hereon are in feet and based on the National Geodetic Vertical Datum of 1929 (NGVD 1929).
- Benchmark Description: National Geodetic Survey Benchmark "D 121" (P.I.D. AA0020), Elevation=3.91' (NGVD 1929).
- Units of measurement are in U.S. Survey Feet and decimal parts thereof. Well identified features in this survey were field measured to a horizontal positional accuracy of 0.04'. The elevations on impervious surfaces were field measured to 0.02' and on ground surfaces to 0.04'.
- The subject property lies within Flood Zone AE with Base Flood Elevation of 8.
 - The above Flood Zones information are referenced to Community Panel No. 12016B 1517 K, dated February 18, 2005.
- Additions or deletions to survey map or report by other than the signing party is prohibited without written consent of the signing party.
- This survey map is not complete without sheet 2 of 2

SYMBOL LEGEND:	LINE LEGEND:

KEY PLAN	TEXTURE



MATCH LINE SEE SHEET V-001
MATCH LINE SEE SHEET V-002

FLORIDA KEYS LAND SURVEYING
1996 OVERSEAS HIGHWAY
SUGARLOAF KEY, FL 33042
PHONE: (305) 394-3690
FAX: (305) 509-7373
EMAIL: FKLSEmail@gmail.com

MAP OF TOPOGRAPHIC & BOUNDARY SURVEY			
-MARTY'S PLACE, BERTHA, VENETIAN & DENNIS STREETS - KEY WEST, MONROE COUNTY, STATE OF FLORIDA			
DATE: 10/23/2013	SURVEY BY: EAI	PROJECT: VENETIA TOPO	
ORDER:	DRAWN BY: EAI	H. SCALE: 1"=10'	
BOOK: FB 105	CHECKED BY:	SHEET 1 OF 2	