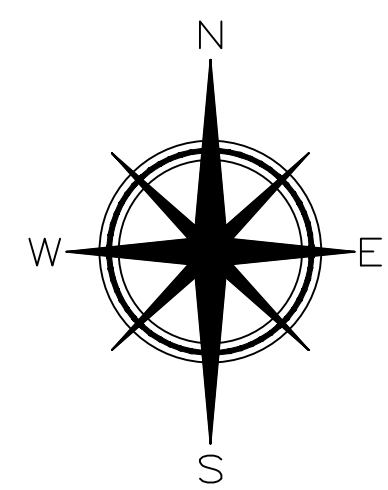
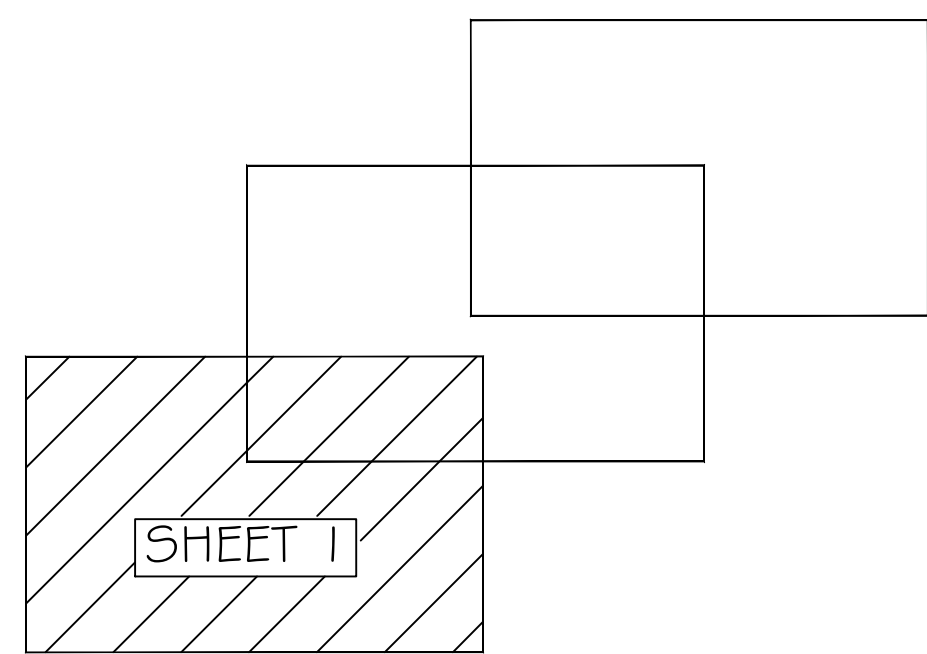




LOCATION MAP - N.T.S.
5-T 68 5-R 25 E



1"=20'-0"
0 10 20 40
*VERIFY ORIGINAL SCALE OF 2"

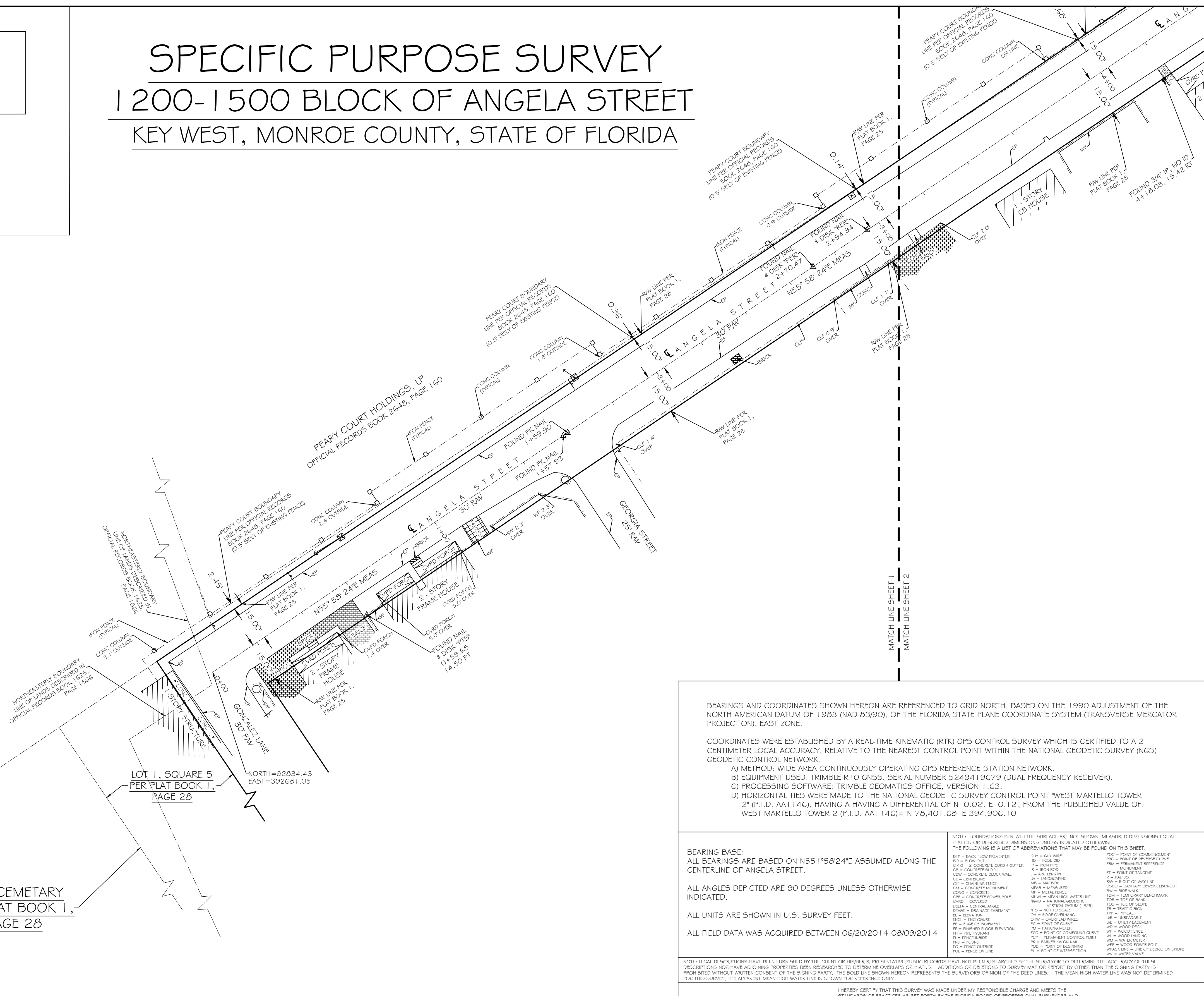


KEY PLAN

SPECIFIC PURPOSE SURVEY

1200-1500 BLOCK OF ANGELA STREET

KEY WEST, MONROE COUNTY, STATE OF FLORIDA



BEARINGS AND COORDINATES SHOWN HEREON ARE REFERENCED TO GRID NORTH, BASED ON THE 1990 ADJUSTMENT OF THE NORTH AMERICAN DATUM OF 1983 (NAD 83/90), OF THE FLORIDA STATE PLANE COORDINATE SYSTEM (TRANSVERSE MERCATOR PROJECTION), EAST ZONE.

COORDINATES WERE ESTABLISHED BY A REAL-TIME KINEMATIC (RTK) GPS CONTROL SURVEY WHICH IS CERTIFIED TO A 2 CENTIMETER LOCAL ACCURACY, RELATIVE TO THE NEAREST CONTROL POINT WITHIN THE NATIONAL GEODETIC SURVEY (NGS) GEODETIC CONTROL NETWORK.

A) METHOD: WIDE AREA CONTINUOUSLY OPERATING GPS REFERENCE STATION NETWORK.
 B) EQUIPMENT USED: TRIMBLE R10 GN55, SERIAL NUMBER 5249419679 (DUAL FREQUENCY RECEIVER).
 C) PROCESSING SOFTWARE: TRIMBLE GEOMATICS OFFICE, VERSION 1.63.
 D) HORIZONTAL TIES WERE MADE TO THE NATIONAL GEODETIC SURVEY CONTROL POINT WEST MARTELLO TOWER 2 (P.I.D. AA1146), HAVING A HAVING A DIFFERENTIAL OF N 0.02', E 0.12', FROM THE PUBLISHED VALUE OF: WEST MARTELLO TOWER 2 (P.I.D. AA1146)= N 78.401.68 E 394.906.10

NOTE: FOUNDATIONS BENEATH THE SURFACE ARE NOT SHOWN. MEASURED DIMENSIONS EQUAL PLATTED OR DESORBED DIMENSIONS UNLESS INDICATED OTHERWISE.

THE FOLLOWING IS A LIST OF ABBREVIATIONS THAT MAY BE FOUND ON THIS SHEET:

BL = BASELINE	BO = BLOW OUT	CB = CONCRETE BLOCK	CL = CENTERLINE	CM = CONCRETE MONUMENT	CONC = CONCRETE	CPP = CONCRETE POWER POLE	EL = ELEVATION	ENCL = ENCLOSURE	EP = EDGE OF PAVEMENT	FL = FLOW LINE	FH = FIRE HYDRANT	FND = FOUNDATION	IS = LANDSCAPING	MB = MAILBOX	MEAS = MEASURED	MF = METAL FENCE	NGS = NATIONAL GEODETIC SURVEY	NGVD = NATIONAL GEODETIC VERTICAL DATUM (1929)	PRM = PERMANENT REFERENCE MONUMENT	RAW = RIGHT OF WAY LINE	SSCO = SANITARY SEWER CLEAN-OUT	SW = SIDE WALK	TBM = TEMPORARY BENCHMARK	TS = TRAFFIC SIGN	UR = UNREADABLE	WF = WOOD FENCE	WM = WATER METER	WPP = WOOD POWER POLE	OH = OVERHEAD WIRES	PC = POINT OF CURVE	PM = PARKING METER	PCC = POINT OF COMPOUND CURVE	PCP = PERMANENT CONTROL POINT	PK = PARKER SALON MAIL	PI = POINT OF INTERSECTION	CONCRETE UTILITY POLE	ELECTRIC MANHOLE	FIRE HYDRANT	GLY WIRE	MAILBOX	SANITARY CLEANOUT	SANITARY MANHOLE	SIGN	TELEPHONE MANHOLE	WATER VALVE	WATER METER	WELL TEST STATION	WOOD UTILITY POLE	CONCRETE UTILITY POLE	ELECTRIC MANHOLE	FIRE HYDRANT	GLY WIRE	MAILBOX	SANITARY CLEANOUT	SANITARY MANHOLE	SIGN	TELEPHONE MANHOLE	WATER VALVE	WATER METER	WELL TEST STATION	WOOD UTILITY POLE
---------------	---------------	---------------------	-----------------	------------------------	-----------------	---------------------------	----------------	------------------	-----------------------	----------------	-------------------	------------------	------------------	--------------	-----------------	------------------	--------------------------------	--	------------------------------------	-------------------------	---------------------------------	----------------	---------------------------	-------------------	-----------------	-----------------	------------------	-----------------------	---------------------	---------------------	--------------------	-------------------------------	-------------------------------	------------------------	----------------------------	-----------------------	------------------	--------------	----------	---------	-------------------	------------------	------	-------------------	-------------	-------------	-------------------	-------------------	-----------------------	------------------	--------------	----------	---------	-------------------	------------------	------	-------------------	-------------	-------------	-------------------	-------------------

BEARING BASE:
ALL BEARINGS ARE BASED ON N55°58'24"E ASSUMED ALONG THE CENTERLINE OF ANGELA STREET.

ALL ANGLES DEPICTED ARE 90 DEGREES UNLESS OTHERWISE INDICATED.

ALL UNITS ARE SHOWN IN U.S. SURVEY FEET.

ALL FIELD DATA WAS ACQUIRED BETWEEN 06/20/2014-08/09/2014

NOTE: LEGAL DESCRIPTIONS HAVE BEEN FURNISHED BY THE CLIENT OR HIS/HER REPRESENTATIVE. PUBLIC RECORDS HAVE NOT BEEN RESEARCHED BY THE SURVEYOR TO DETERMINE THE ACCURACY OF THESE DESCRIPTIONS NOR HAVE ADJOINING PROPERTIES BEEN RESEARCHED TO DETERMINE OVERLAPS OR MARGINS. ADDITIONS OR OMISSIONS TO SURVEY MAP OR REPORT BY OTHER THAN THE SIGNING PARTY IS PROHIBITED WITHOUT WRITTEN CONSENT OF THE SIGNING PARTY. THE BOLD LINE SHOWN HEREON REPRESENTS THE SURVEYOR'S OPINION OF THE DEED LINES. THE MEAN HIGH WATER LINE WAS NOT DETERMINED FOR THIS SURVEY. THE APPARENT MEAN HIGH WATER LINE IS SHOWN FOR REFERENCE ONLY.

I HEREBY CERTIFY THAT THIS SURVEY WAS MADE UNDER MY RESPONSIBLE CHARGE AND MEETS THE STANDARDS OF PRACTICES AS SET FORTH BY THE FLORIDA BOARD OF PROFESSIONAL SURVEYORS AND MAPPERS IN CHAPTERS 2014-17 & 2015-17, FLORIDA ADMINISTRATIVE CODE, PURSUANT TO SECTION 472.027, FLORIDA STATUTES AND COMPLIES WITH CHAPTER 177, PART 9 FLORIDA STATUTES.

DRAFT

NOT VALID WITHOUT THE SIGNATURE AND THE RAISED SEAL OF A FLORIDA SURVEYOR AND MAPPER

ERIC A. ISAACS, PSM #6783, PROFESSIONAL SURVEYOR AND MAPPER, LBM 7847

ABBREVIATION LEGEND:		SYMBOL LEGEND:	
BL = BASELINE	PRM = PERMANENT REFERENCE MONUMENT	CONCRETE UTILITY POLE	CONCRETE UTILITY POLE
BM = BENCHMARK	RAW = RIGHT OF WAY LINE	ELECTRIC MANHOLE	ELECTRIC MANHOLE
CB = CONCRETE BLOCK	SSCO = SANITARY SEWER CLEAN-OUT	FIRE HYDRANT	FIRE HYDRANT
CL = CENTERLINE	SW = SIDE WALK	GLY WIRE	GLY WIRE
CLP = CHANLINK FENCE	TBM = TEMPORARY BENCHMARK	MAILBOX	MAILBOX
CM = CONCRETE MONUMENT	TS = TRAFFIC SIGN	SANITARY CLEANOUT	SANITARY CLEANOUT
CONC = CONCRETE	UR = UNREADABLE	SANITARY MANHOLE	SANITARY MANHOLE
CPP = CONCRETE POWER POLE	WF = WOOD FENCE	SIGN	SIGN
EL = ELEVATION	WM = WATER METER	TELEPHONE MANHOLE	TELEPHONE MANHOLE
ENCL = ENCLOSURE	WPP = WOOD POWER POLE	WATER VALVE	WATER VALVE
EP = EDGE OF PAVEMENT	OH = OVERHEAD WIRES	WATER METER	WATER METER
FL = FLOW LINE	PC = POINT OF CURVE	WELL TEST STATION	WELL TEST STATION
FH = FIRE HYDRANT	PM = PARKING METER	WOOD UTILITY POLE	WOOD UTILITY POLE
FND = FOUNDATION	PCC = POINT OF COMPOUND CURVE		
IS = LANDSCAPING	PCP = PERMANENT CONTROL POINT		
MB = MAILBOX	PK = PARKER SALON MAIL		
MEAS = MEASURED	PI = POINT OF INTERSECTION		
MF = METAL FENCE			
NGS = NATIONAL GEODETIC SURVEY			
NGVD = NATIONAL GEODETIC VERTICAL DATUM (1929)			

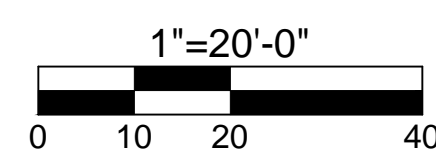
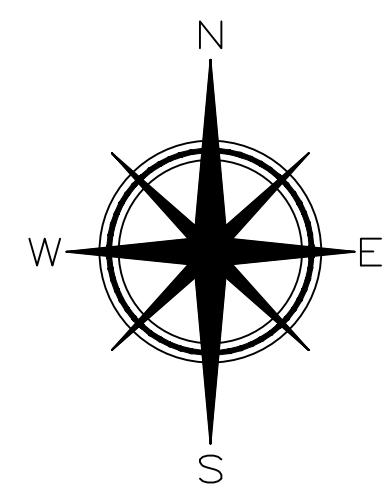
FLORIDA KEYS LAND SURVEYING
 19860 OVERSEAS HIGHWAY
 SUGARLOAF KEY, FL 33042
 PHONE: (305) 394-3690
 FAX: (305) 509-7373
 EMAIL: FKL5email@Gmail.com

SPECIFIC PURPOSE SURVEY
 1200-1500 BLOCK OF ANGELA STREET
 KEY WEST, MONROE COUNTY, STATE OF FLORIDA

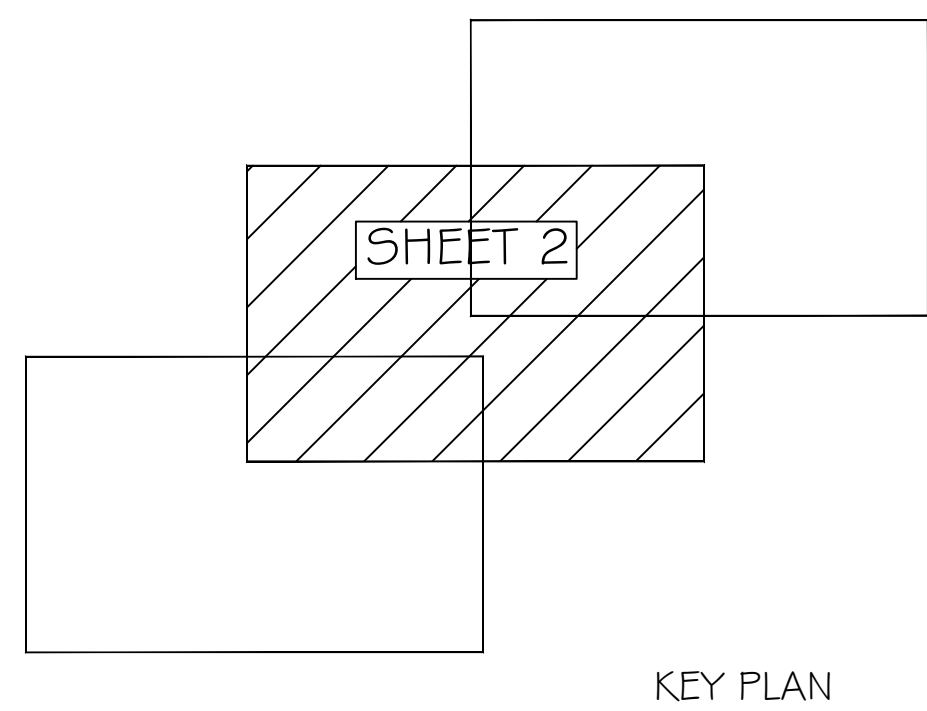
DATE: PRELIMINARY 8/11/14 SURVEY BY: EAI PROJECT: CKW PO#077066
 ORDER: DRAWN BY: MPB H. SCALE: 1"=20'
 BOOK: CHECKED BY: SHEET 1 OF 3



LOCATION MAP - N.T.S.
5-T 68 5-R 25 E



1"=20'-0"
*VERIFY ORIGINAL SCALE OF 2"

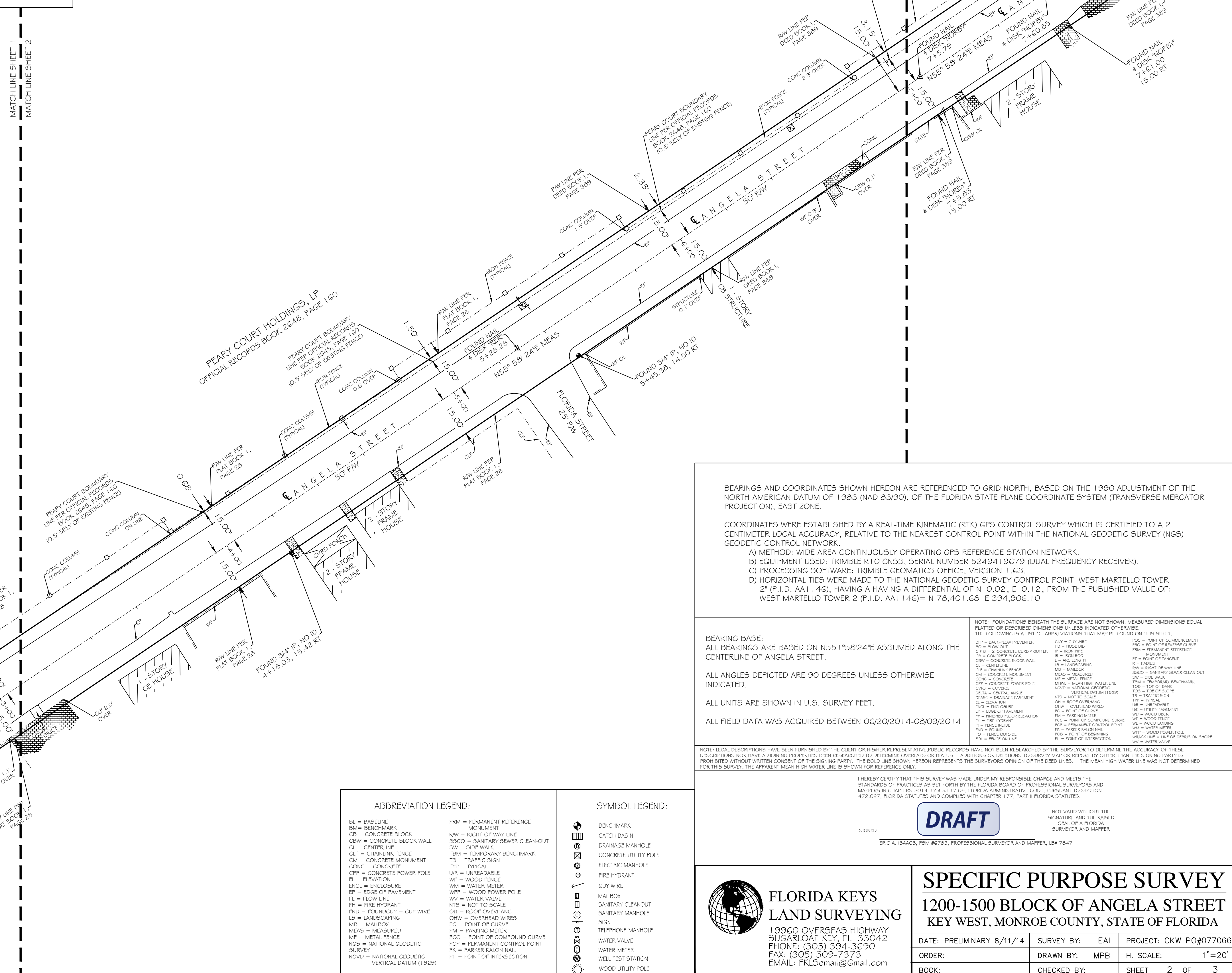


KEY PLAN

SPECIFIC PURPOSE SURVEY

1200-1500 BLOCK OF ANGELA STREET

KEY WEST, MONROE COUNTY, STATE OF FLORIDA



BEARINGS AND COORDINATES SHOWN HEREON ARE REFERENCED TO GRID NORTH, BASED ON THE 1990 ADJUSTMENT OF THE NORTH AMERICAN DATUM OF 1983 (NAD 83/90), OF THE FLORIDA STATE PLANE COORDINATE SYSTEM (TRANSVERSE MERCATOR PROJECTION), EAST ZONE.

COORDINATES WERE ESTABLISHED BY A REAL-TIME KINEMATIC (RTK) GPS CONTROL SURVEY WHICH IS CERTIFIED TO A 2 CENTIMETER LOCAL ACCURACY, RELATIVE TO THE NEAREST CONTROL POINT WITHIN THE NATIONAL GEODETTIC SURVEY (NGS) GEODETTIC CONTROL NETWORK.

A) METHOD: WIDE AREA CONTINUOUSLY OPERATING GPS REFERENCE STATION NETWORK.
 B) EQUIPMENT USED: TRIMBLE R10 GNSS, SERIAL NUMBER 5249419679 (DUAL FREQUENCY RECEIVER).
 C) PROCESSING SOFTWARE: TRIMBLE GEOMATICS OFFICE, VERSION 1.63.
 D) HORIZONTAL TIES WERE MADE TO THE NATIONAL GEODETTIC SURVEY CONTROL POINT "WEST MARTELLO TOWER 2" (P.I.D. AA1146), HAVING A HAVING A DIFFERENTIAL OF N 0.02', E 0.12', FROM THE PUBLISHED VALUE OF: WEST MARTELLO TOWER 2 (P.I.D. AA1146)= N 78,401.68 E 394,906.10

NOTE: FOUNDATIONS BENEATH THE SURFACE ARE NOT SHOWN. MEASURED DIMENSIONS EQUAL PLATTED OR DESORBED DIMENSIONS UNLESS INDICATED OTHERWISE.

BEARING BASE:
ALL BEARINGS ARE BASED ON N55°58'24"E ASSUMED ALONG THE CENTERLINE OF ANGELA STREET.

ALL ANGLES DEPICTED ARE 90 DEGREES UNLESS OTHERWISE INDICATED.

ALL UNITS ARE SHOWN IN U.S. SURVEY FEET.

ALL FIELD DATA WAS ACQUIRED BETWEEN 06/20/2014-08/09/2014

NOTE: LEGAL DESCRIPTIONS HAVE BEEN FURNISHED BY THE CLIENT OR HIS/HER REPRESENTATIVE. PUBLIC RECORDS HAVE NOT BEEN RESEARCHED BY THE SURVEYOR TO DETERMINE THE ACCURACY OF THESE DESCRIPTIONS NOR HAVE ADJOINING PROPERTIES BEEN RESEARCHED TO DETERMINE DISCREPANCIES OR OMISSIONS TO SURVEY MAP OR REPORT BY OTHER THAN THE SIGNING PARTY. IT IS PROHIBITED WITHOUT WRITTEN CONSENT OF THE SIGNING PARTY, THE BOLD LINE SHOWN HEREON REPRESENTS THE SURVEYOR'S OPINION OF THE DEED LINES. THE MEAN HIGH WATER LINE WAS NOT DETERMINED FOR THIS SURVEY. THE APPARENT MEAN HIGH WATER LINE IS SHOWN FOR REFERENCE ONLY.

I HEREBY CERTIFY THAT THIS SURVEY WAS MADE UNDER MY RESPONSIBLE CHARGE AND MEETS THE STANDARDS OF PRACTICES AS SET FORTH BY THE FLORIDA BOARD OF PROFESSIONAL SURVEYORS AND MAPPERS IN CHAPTERS 20-14-17 & 20-17-09, FLORIDA ADMINISTRATIVE CODE, PURSUANT TO SECTION 472.027, FLORIDA STATUTES AND COMPLIES WITH CHAPTER 177, PART 9 FLORIDA STATUTES.

DRAFT

NOT VALID WITHOUT THE SIGNATURE AND THE RAISED SEAL OF A FLORIDA SURVEYOR AND MAPPER

ERIC A. ISAACS, PSM #2783, PROFESSIONAL SURVEYOR AND MAPPER, LSW 7847

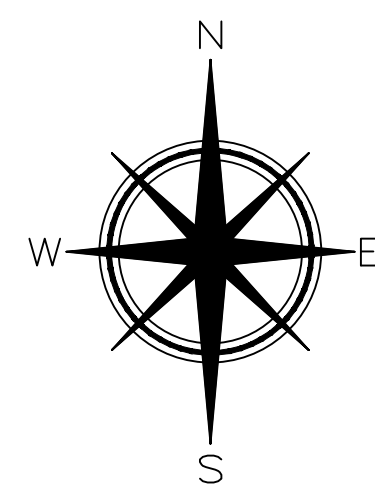
ABBREVIATION LEGEND:		SYMBOL LEGEND:	
BL = BASELINE	FRM = PERMANENT REFERENCE MONUMENT	BENCHMARK	(Symbol)
BM = BENCHMARK	RAW = RIGHT OF WAY LINE	CATCH BASIN	(Symbol)
CB = CONCRETE BLOCK WALL	SSCO = SANITARY SEWER CLEAN-OUT	DRAINAGE MANHOLE	(Symbol)
CL = CENTERLINE	SW = SIDE WALK	CONCRETE UTILITY POLE	(Symbol)
CLP = CHAINLINK FENCE	TBM = TEMPORARY BENCHMARK	ELECTRIC MANHOLE	(Symbol)
CM = CONCRETE MONUMENT	TS = TRAFFIC SIGN	FIRE HYDRANT	(Symbol)
CONC = CONCRETE	UR = UNREADABLE	GLY WIRE	(Symbol)
CPP = CONCRETE POWER POLE	WF = WOOD FENCE	MAILBOX	(Symbol)
EL = ELEVATION	WM = WATER METER	SANITARY CLEANOUT	(Symbol)
ENCL = ENCLOSURE	WPP = WOOD POWER POLE	SANITARY MANHOLE	(Symbol)
EP = EDGE OF PAVEMENT	OH = OVERHEAD WIRES	WATER VALVE	(Symbol)
FL = FLOW LINE	NTS = NOT TO SCALE	WATER METER	(Symbol)
FH = FIRE HYDRANT	OH = ROOF OVERHANG	WELL TEST STATION	(Symbol)
FND = FOUNDATION - GUY WIRE	LS = LANDSCAPING	WOOD UTILITY POLE	(Symbol)
LS = LANDSCAPING	MF = METAL FENCE		
MB = MAILBOX	PC = POINT OF CURVE		
MEAS = MEASURED	PM = PARKING METER		
MF = METAL FENCE	PCC = POINT OF COMPOUND CURVE		
NGS = NATIONAL GEODETTIC SURVEY	PK = PARKER SALON HALL		
NGVD = NATIONAL GEODETTIC VERTICAL DATUM (1929)	PI = POINT OF INTERSECTION		

FLORIDA KEYS LAND SURVEYING
 19960 OVERSEAS HIGHWAY
 SUGARLOAF KEY, FL 33042
 PHONE: (305) 394-3690
 FAX: (305) 509-7373
 EMAIL: FKL5email@Gmail.com

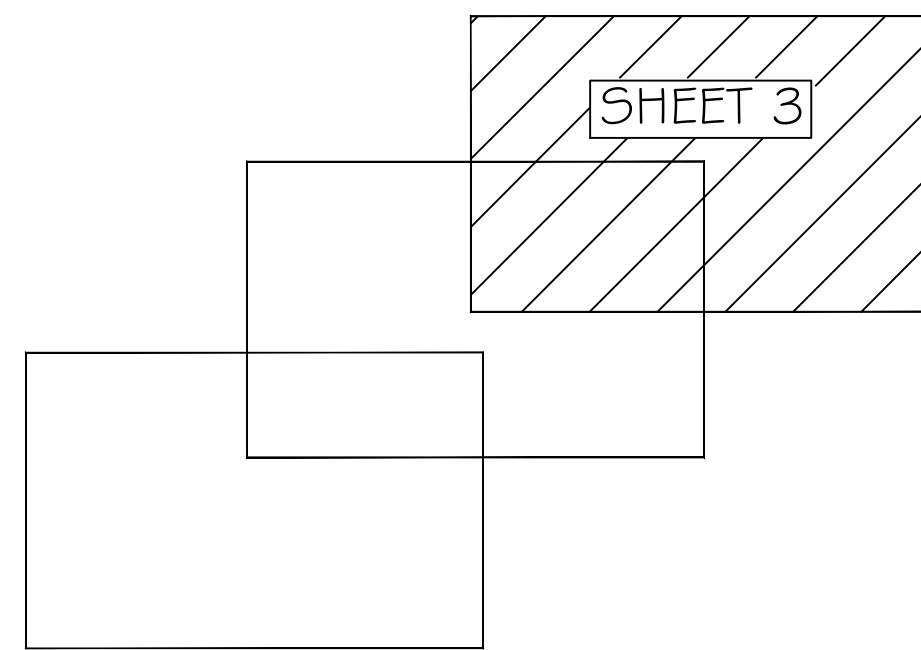
SPECIFIC PURPOSE SURVEY			
1200-1500 BLOCK OF ANGELA STREET KEY WEST, MONROE COUNTY, STATE OF FLORIDA			
DATE: PRELIMINARY 8/11/14	SURVEY BY: EAI	PROJECT: CKW PO#077066	
ORDER:	DRAWN BY: MPB	H. SCALE: 1"=20'	
BOOK:	CHECKED BY:	SHEET 2 OF 3	



LOCATION MAP - N.T.S.
5-T 68 5-R 25 E

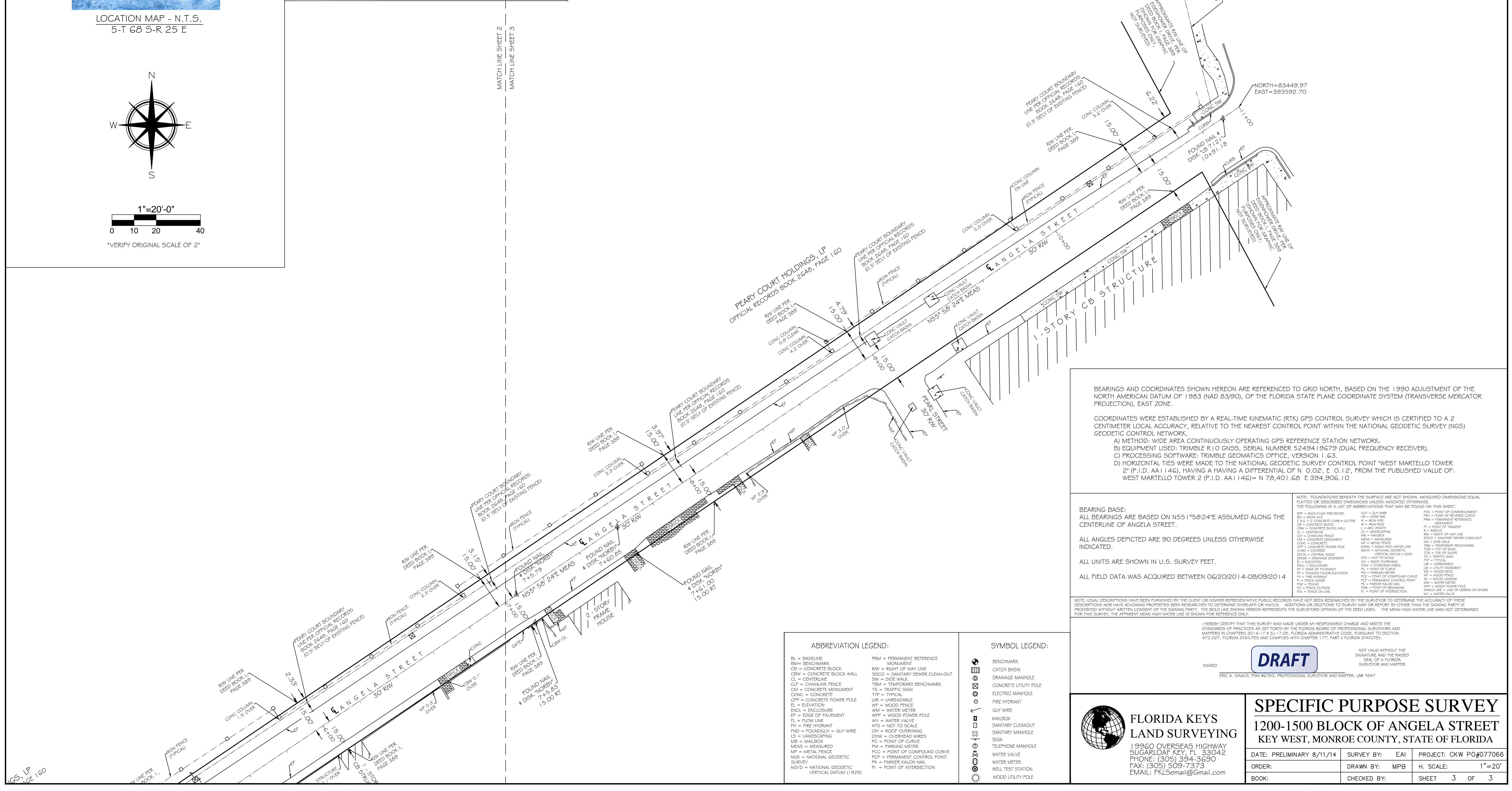


1"=20'-0"
0 10 20 40
*VERIFY ORIGINAL SCALE OF 2"



KEY PLAN

SPECIFIC PURPOSE SURVEY 1200-1500 BLOCK OF ANGELA STREET KEY WEST, MONROE COUNTY, STATE OF FLORIDA



BEARINGS AND COORDINATES SHOWN HEREON ARE REFERENCED TO GRID NORTH, BASED ON THE 1990 ADJUSTMENT OF THE NORTH AMERICAN DATUM OF 1983 (NAD 83/90), OF THE FLORIDA STATE PLANE COORDINATE SYSTEM (TRANSVERSE MERCATOR PROJECTION), EAST ZONE.

COORDINATES WERE ESTABLISHED BY A REAL-TIME KINEMATIC (RTK) GPS CONTROL SURVEY WHICH IS CERTIFIED TO A 2 CENTIMETER LOCAL ACCURACY, RELATIVE TO THE NEAREST CONTROL POINT WITHIN THE NATIONAL GEODETIC SURVEY (NGS) GEODETIC CONTROL NETWORK.

A) METHOD: WIDE AREA CONTINUOUSLY OPERATING GPS REFERENCE STATION NETWORK.
B) EQUIPMENT USED: TRIMBLE R10 GNSS, SERIAL NUMBER 5249419679 (DUAL FREQUENCY RECEIVER).
C) PROCESSING SOFTWARE: TRIMBLE GEOMATICS OFFICE, VERSION 1.63.
D) HORIZONTAL TIES WERE MADE TO THE NATIONAL GEODETIC SURVEY CONTROL POINT WEST MARTELLO TOWER 2' (P.I.D. AA1146), HAVING A HAVING A DIFFERENTIAL OF N 0.02', E 0.12', FROM THE PUBLISHED VALUE OF: WEST MARTELLO TOWER 2 (P.I.D. AA1146)= N 78.401.68 E 394.906.10

BEARING BASE:
ALL BEARINGS ARE BASED ON N55°58'24"E ASSUMED ALONG THE CENTERLINE OF ANGELA STREET.

ALL ANGLES DEPICTED ARE 90 DEGREES UNLESS OTHERWISE INDICATED.

ALL UNITS ARE SHOWN IN U.S. SURVEY FEET.

ALL FIELD DATA WAS ACQUIRED BETWEEN 06/20/2014-09/09/2014

NOTE: FOUNDATIONS BENEATH THE SURFACE ARE NOT SHOWN. MEASURED DIMENSIONS EQUAL PLATTED OR DESCRIBED DIMENSIONS UNLESS INDICATED OTHERWISE.

THE FOLLOWING IS A LIST OF ABBREVIATIONS THAT MAY BE FOUND ON THIS SHEET:

BM = BENCHMARK	CB = CONCRETE BLOCK WALL	CD = CENTERLINE	CL = CHAINLINK FENCE	CONC = CONCRETE	CPP = CONCRETE POWER POLE	EL = ELEVATION	ENCL = ENCLOSURE	EP = EDGE OF PAVEMENT	FL = FLOW LINE	FR = FIRE HYDRANT	FND = FOUNDATION	LS = LANDSCAPING	MB = MAILBOX	MEAS = MEASURED	MF = METAL FENCE	NSG = NATIONAL GEODETIC SURVEY	NGVD = NATIONAL GEODETIC VERTICAL DATUM (1929)
GR = GRASS	IR = IRON ROD	IS = IRON SIGN	IS = IRON SIGN	IS = IRON SIGN	IS = IRON SIGN	IS = IRON SIGN	IS = IRON SIGN	IS = IRON SIGN	IS = IRON SIGN	IS = IRON SIGN	IS = IRON SIGN	IS = IRON SIGN	IS = IRON SIGN	IS = IRON SIGN	IS = IRON SIGN	IS = IRON SIGN	IS = IRON SIGN

ABBREVIATION LEGEND:	
BL = BASELINE	FRM = PERMANENT REFERENCE MONUMENT
BM = BENCHMARK	RAW = RIGHT OF WAY LINE
CB = CONCRETE BLOCK WALL	SSCO = SANITARY SEWER CLEAN-OUT
CL = CENTERLINE	SW = SIDE WALK
CLF = CHAINLINK FENCE	TBM = TEMPORARY BENCHMARK
CONC = CONCRETE	TS = TRAFFIC SIGN
CPP = CONCRETE POWER POLE	UR = UNREADABLE
EL = ELEVATION	WM = WATER METER
ENCL = ENCLOSURE	WPP = WOOD POWER POLE
EP = EDGE OF PAVEMENT	OW = OVERHEAD WIRES
FL = FLOW LINE	NTS = NOT TO SCALE
FR = FIRE HYDRANT	OH = ROOF OVERHANG
FND = FOUNDATION	OWH = OVERHEAD WIRE
LS = LANDSCAPING	PC = POINT OF CURVE
MB = MAILBOX	PCC = POINT OF COMPOUND CURVE
MEAS = MEASURED	PK = PARKER SALON HALL
MF = METAL FENCE	PI = POINT OF INTERSECTION
NSG = NATIONAL GEODETIC SURVEY	
NGVD = NATIONAL GEODETIC VERTICAL DATUM (1929)	

SYMBOL LEGEND:	
	BENCHMARK
	CATCH BASIN
	DRAINAGE MANHOLE
	CONCRETE UTILITY POLE
	ELECTRIC MANHOLE
	FIRE HYDRANT
	GUY WIRE
	MAILBOX
	SANITARY CLEANOUT
	SANITARY MANHOLE
	SIGN
	TELEPHONE MANHOLE
	WATER VALVE
	WATER METER
	WELL TEST STATION
	WOOD UTILITY POLE

NOT VALID WITHOUT THE SIGNATURE AND THE RAISED SEAL OF A FLORIDA SURVEYOR AND MAPPER

ERIC A. ISAACS, PSM #6783, PROFESSIONAL SURVEYOR AND MAPPER, LSW 7847

FLORIDA KEYS LAND SURVEYING
19960 OVERSEAS HIGHWAY
SUGARLOAF KEY, FL 33042
PHONE: (305) 394-3690
FAX: (305) 509-7373
EMAIL: FKL5email@Gmail.com

SPECIFIC PURPOSE SURVEY
1200-1500 BLOCK OF ANGELA STREET
KEY WEST, MONROE COUNTY, STATE OF FLORIDA

DATE: PRELIMINARY 8/11/14	SURVEY BY: EAI	PROJECT: CKW PO#077066
ORDER:	DRAWN BY: MPB	H. SCALE: 1"=20'
BOOK:	CHECKED BY:	SHEET 3 OF 3