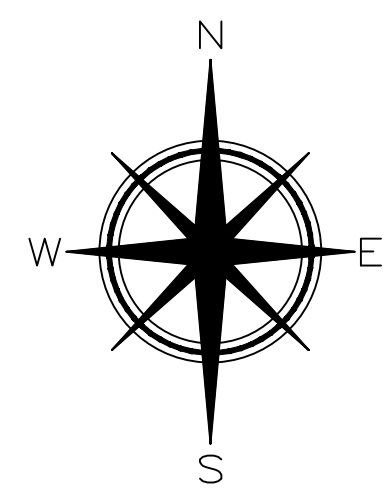
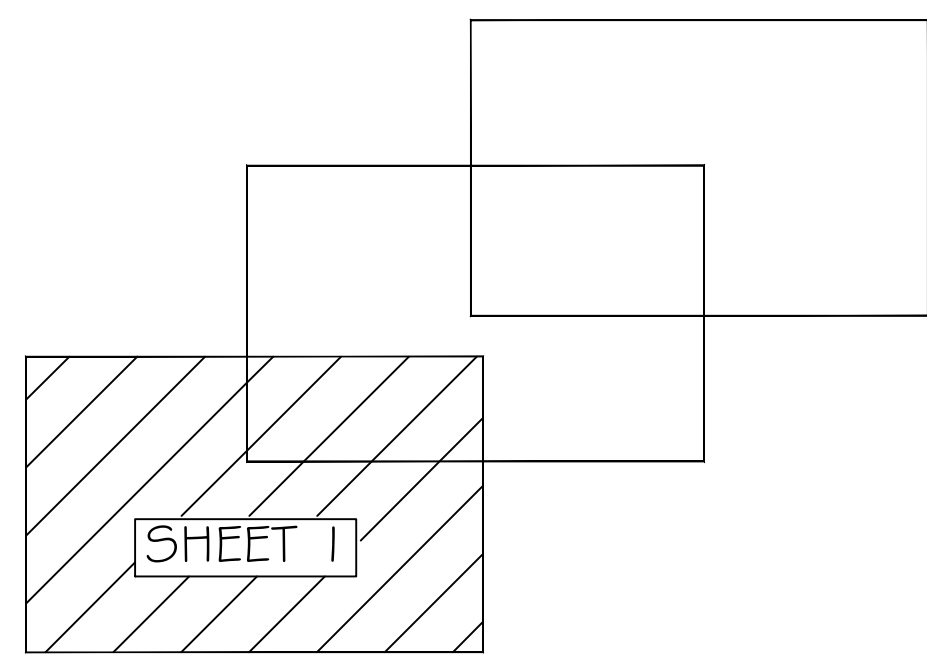




LOCATION MAP - N.T.S.
5-T 68 5-R 25 E



1"=20'-0"
0 10 20 40
*VERIFY ORIGINAL SCALE OF 2"

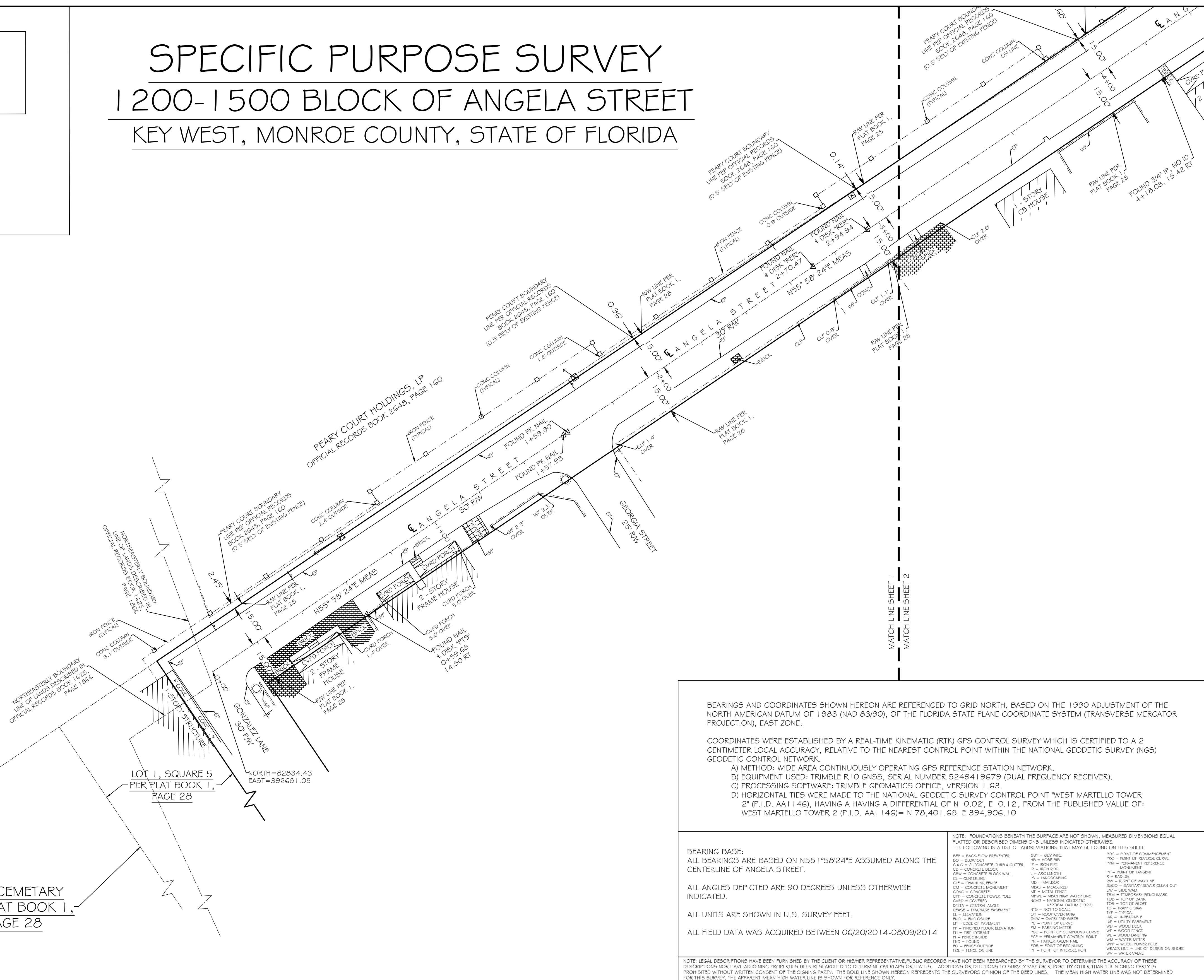


KEY PLAN

SPECIFIC PURPOSE SURVEY

1200-1500 BLOCK OF ANGELA STREET

KEY WEST, MONROE COUNTY, STATE OF FLORIDA



BEARINGS AND COORDINATES SHOWN HEREON ARE REFERENCED TO GRID NORTH, BASED ON THE 1990 ADJUSTMENT OF THE NORTH AMERICAN DATUM OF 1983 (NAD 83/90), OF THE FLORIDA STATE PLANE COORDINATE SYSTEM (TRANSVERSE MERCATOR PROJECTION), EAST ZONE.

COORDINATES WERE ESTABLISHED BY A REAL-TIME KINEMATIC (RTK) GPS CONTROL SURVEY WHICH IS CERTIFIED TO A 2 CENTIMETER LOCAL ACCURACY, RELATIVE TO THE NEAREST CONTROL POINT WITHIN THE NATIONAL GEODETIC SURVEY (NGS) GEODETIC CONTROL NETWORK.

A) METHOD: WIDE AREA CONTINUOUSLY OPERATING GPS REFERENCE STATION NETWORK.
 B) EQUIPMENT USED: TRIMBLE R10 GN55, SERIAL NUMBER 5249419679 (DUAL FREQUENCY RECEIVER).
 C) PROCESSING SOFTWARE: TRIMBLE GEOMATICS OFFICE, VERSION 1.63.
 D) HORIZONTAL TIES WERE MADE TO THE NATIONAL GEODETIC SURVEY CONTROL POINT WEST MARTELLO TOWER 2 (P.I.D. AA1146), HAVING A HAVING A DIFFERENTIAL OF N 0.02', E 0.12', FROM THE PUBLISHED VALUE OF: WEST MARTELLO TOWER 2 (P.I.D. AA1146)= N 78.401.68 E 394.906.10

NOTE: FOUNDATIONS BENEATH THE SURFACE ARE NOT SHOWN. MEASURED DIMENSIONS EQUAL PLATTED OR DESORBED DIMENSIONS UNLESS INDICATED OTHERWISE.

THE FOLLOWING IS A LIST OF ABBREVIATIONS THAT MAY BE FOUND ON THIS SHEET:

BL = BASELINE	BO = BLOW OUT	CB = CONCRETE BLOCK	CL = CENTERLINE	CM = CONCRETE MONUMENT	CONC = CONCRETE	CP = CONCRETE POWER POLE	EL = ELEVATION	ENCL = ENCLOSURE	EP = EDGE OF PAVEMENT	FL = FLOW LINE	FH = FIRE HYDRANT	FND = FOUNDATION	IS = LANDSCAPING	MB = MAILBOX	MEAS = MEASURED	MF = METAL FENCE	NGS = NATIONAL GEODETIC SURVEY	NGVD = NATIONAL GEODETIC VERTICAL DATUM (1929)	PRM = PERMANENT REFERENCE MONUMENT	RAW = RIGHT OF WAY LINE	SSCO = SANITARY SEWER CLEAN-OUT	SW = SIDE WALK	TBM = TEMPORARY BENCHMARK	TS = TRAFFIC SIGN	UR = UNREADABLE	WF = WOOD FENCE	WM = WATER METER	WPP = WOOD POWER POLE	OH = OVERHEAD WIRES	PC = POINT OF CURVE	PM = PARKING METER	PCC = POINT OF COMPOUND CURVE	PCP = PERMANENT CONTROL POINT	PK = PARKER SALON MAIL	PI = POINT OF INTERSECTION	CONCRETE UTILITY POLE	CONCRETE MANHOLE	CONCRETE UTILITY POLE	ELECTRIC MANHOLE	FIRE HYDRANT	GLY WIRE	MAILBOX	SANITARY CLEANOUT	SANITARY MANHOLE	SIGN	TELEPHONE MANHOLE	WATER VALVE	WATER METER	WELL TEST STATION	WOOD UTILITY POLE	CONCRETE UTILITY POLE	CONCRETE MANHOLE	CONCRETE UTILITY POLE	ELECTRIC MANHOLE	FIRE HYDRANT	GLY WIRE	MAILBOX	SANITARY CLEANOUT	SANITARY MANHOLE	SIGN	TELEPHONE MANHOLE	WATER VALVE	WATER METER	WELL TEST STATION	WOOD UTILITY POLE
---------------	---------------	---------------------	-----------------	------------------------	-----------------	--------------------------	----------------	------------------	-----------------------	----------------	-------------------	------------------	------------------	--------------	-----------------	------------------	--------------------------------	--	------------------------------------	-------------------------	---------------------------------	----------------	---------------------------	-------------------	-----------------	-----------------	------------------	-----------------------	---------------------	---------------------	--------------------	-------------------------------	-------------------------------	------------------------	----------------------------	-----------------------	------------------	-----------------------	------------------	--------------	----------	---------	-------------------	------------------	------	-------------------	-------------	-------------	-------------------	-------------------	-----------------------	------------------	-----------------------	------------------	--------------	----------	---------	-------------------	------------------	------	-------------------	-------------	-------------	-------------------	-------------------

ABBREVIATION LEGEND:		SYMBOL LEGEND:	
BL = BASELINE	PRM = PERMANENT REFERENCE MONUMENT	CONCRETE UTILITY POLE	CONCRETE MANHOLE
BO = BLOW OUT	RAW = RIGHT OF WAY LINE	CONCRETE UTILITY POLE	ELECTRIC MANHOLE
CB = CONCRETE BLOCK WALL	SSCO = SANITARY SEWER CLEAN-OUT	CONCRETE UTILITY POLE	FIRE HYDRANT
CL = CENTERLINE	SW = SIDE WALK	CONCRETE UTILITY POLE	GLY WIRE
CLP = CHANLINK FENCE	TBM = TEMPORARY BENCHMARK	CONCRETE UTILITY POLE	MAILBOX
CM = CONCRETE MONUMENT	TS = TRAFFIC SIGN	CONCRETE UTILITY POLE	SANITARY CLEANOUT
CONC = CONCRETE	UR = UNREADABLE	CONCRETE UTILITY POLE	SANITARY MANHOLE
CP = CONCRETE POWER POLE	WF = WOOD FENCE	CONCRETE UTILITY POLE	SIGN
EL = ELEVATION	WM = WATER METER	CONCRETE UTILITY POLE	TELEPHONE MANHOLE
ENCL = ENCLOSURE	WPP = WOOD POWER POLE	CONCRETE UTILITY POLE	WATER VALVE
EP = EDGE OF PAVEMENT	OH = OVERHEAD WIRES	CONCRETE UTILITY POLE	WATER METER
FL = FLOW LINE	PC = POINT OF CURVE	CONCRETE UTILITY POLE	WELL TEST STATION
FH = FIRE HYDRANT	PM = PARKING METER	CONCRETE UTILITY POLE	WOOD UTILITY POLE
FND = FOUNDATION	PCC = POINT OF COMPOUND CURVE	CONCRETE UTILITY POLE	
IS = LANDSCAPING	PCP = PERMANENT CONTROL POINT	CONCRETE UTILITY POLE	
MB = MAILBOX	PK = PARKER SALON MAIL	CONCRETE UTILITY POLE	
MEAS = MEASURED	PI = POINT OF INTERSECTION	CONCRETE UTILITY POLE	
MF = METAL FENCE		CONCRETE UTILITY POLE	
NGS = NATIONAL GEODETIC SURVEY		CONCRETE UTILITY POLE	
NGVD = NATIONAL GEODETIC VERTICAL DATUM (1929)		CONCRETE UTILITY POLE	

BEARING BASE:
ALL BEARINGS ARE BASED ON N55°58'24"E ASSUMED ALONG THE CENTERLINE OF ANGELA STREET.

ALL ANGLES DEPICTED ARE 90 DEGREES UNLESS OTHERWISE INDICATED.

ALL UNITS ARE SHOWN IN U.S. SURVEY FEET.

ALL FIELD DATA WAS ACQUIRED BETWEEN 06/20/2014-08/09/2014

NOT VALID WITHOUT THE SIGNATURE AND THE RAISED SEAL OF A FLORIDA SURVEYOR AND MAPPER

DRAFT

ERIC A. ISAACS, PSM #6783, PROFESSIONAL SURVEYOR AND MAPPER, LBM 7847

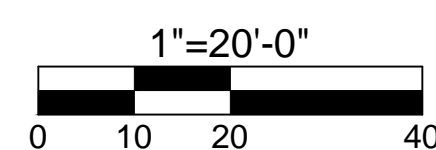
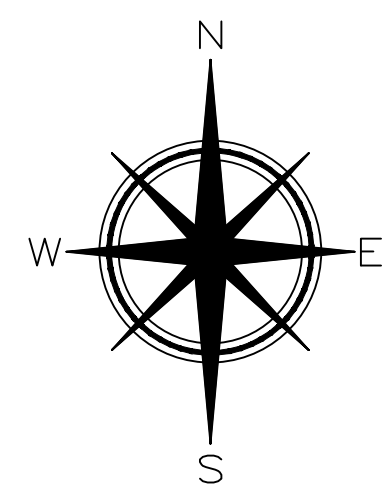
FLORIDA KEYS LAND SURVEYING
 19860 OVERSEAS HIGHWAY
 SUGARLOAF KEY, FL 33042
 PHONE: (305) 394-3690
 FAX: (305) 509-7373
 EMAIL: FKL5email@gmail.com

SPECIFIC PURPOSE SURVEY
 1200-1500 BLOCK OF ANGELA STREET
 KEY WEST, MONROE COUNTY, STATE OF FLORIDA

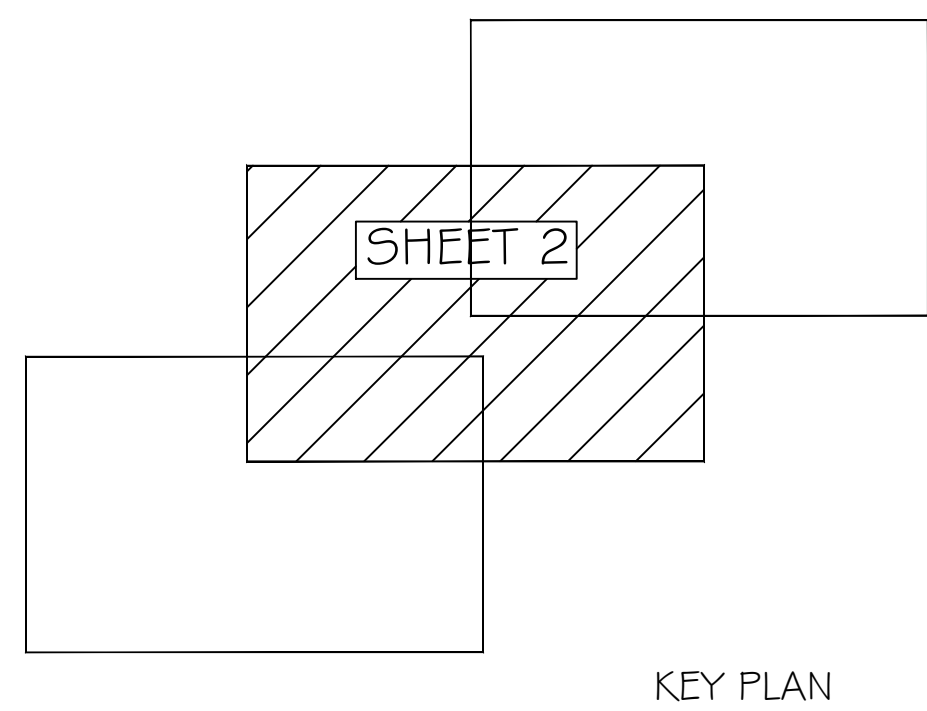
DATE: PRELIMINARY 8/11/14	SURVEY BY: EAI	PROJECT: CKW PO#077066
ORDER:	DRAWN BY: MPB	H. SCALE: 1"=20'
BOOK:	CHECKED BY:	SHEET 1 OF 3



LOCATION MAP - N.T.S.
5-T 68 5-R 25 E



1"=20'-0"
*VERIFY ORIGINAL SCALE OF 2"

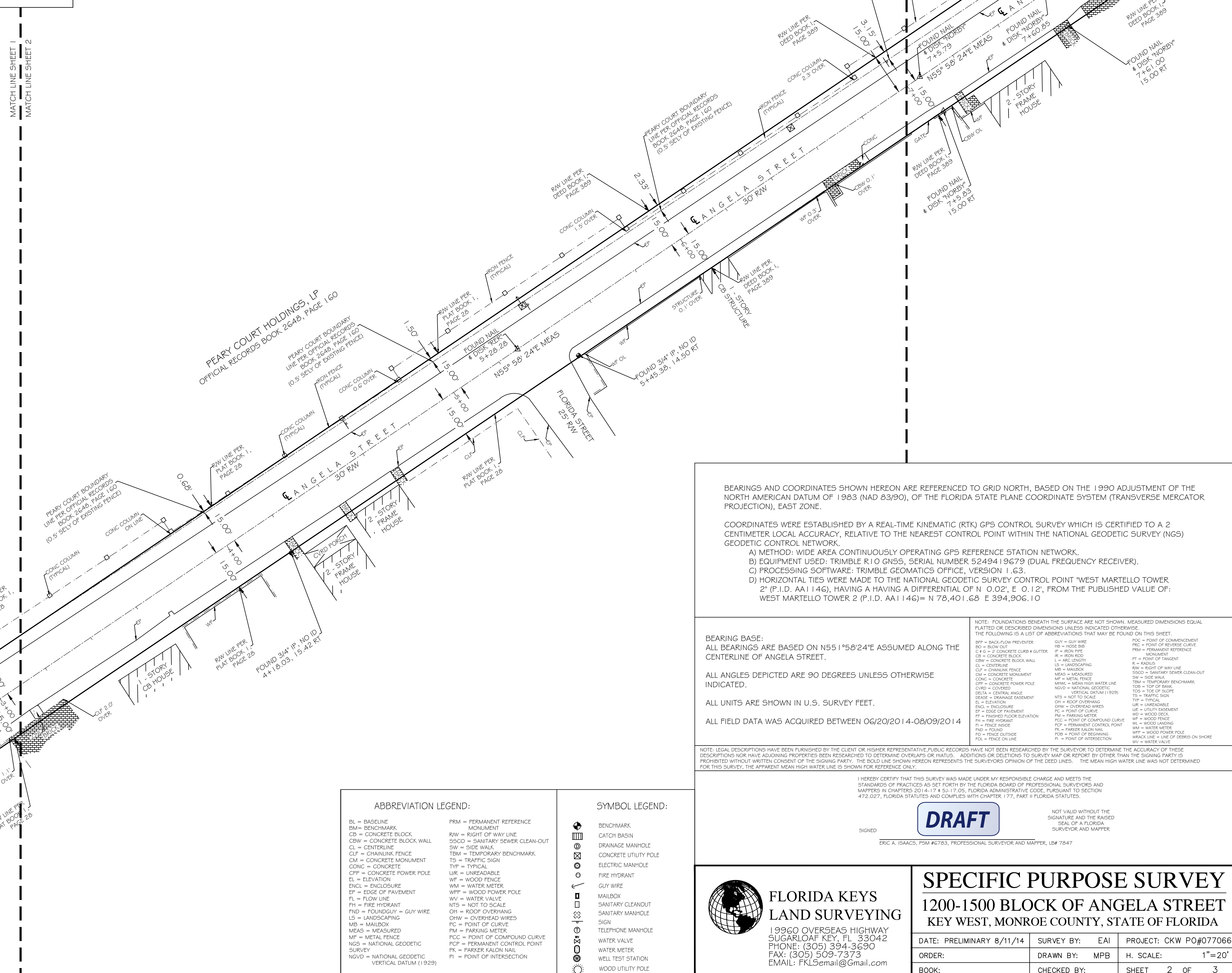


KEY PLAN

SPECIFIC PURPOSE SURVEY

1200-1500 BLOCK OF ANGELA STREET

KEY WEST, MONROE COUNTY, STATE OF FLORIDA



BEARINGS AND COORDINATES SHOWN HEREON ARE REFERENCED TO GRID NORTH, BASED ON THE 1990 ADJUSTMENT OF THE NORTH AMERICAN DATUM OF 1983 (NAD 83/90), OF THE FLORIDA STATE PLANE COORDINATE SYSTEM (TRANSVERSE MERCATOR PROJECTION), EAST ZONE.

COORDINATES WERE ESTABLISHED BY A REAL-TIME KINEMATIC (RTK) GPS CONTROL SURVEY WHICH IS CERTIFIED TO A 2 CENTIMETER LOCAL ACCURACY, RELATIVE TO THE NEAREST CONTROL POINT WITHIN THE NATIONAL GEODETIC SURVEY (NGS) GEODETIC CONTROL NETWORK.

A) METHOD: WIDE AREA CONTINUOUSLY OPERATING GPS REFERENCE STATION NETWORK.
 B) EQUIPMENT USED: TRIMBLE R10 GNSS, SERIAL NUMBER 5249419679 (DUAL FREQUENCY RECEIVER).
 C) PROCESSING SOFTWARE: TRIMBLE GEOMATICS OFFICE, VERSION 1.63.
 D) HORIZONTAL TIES WERE MADE TO THE NATIONAL GEODETIC SURVEY CONTROL POINT "WEST MARTELLO TOWER 2" (P.I.D. AA1146), HAVING A HAVING A DIFFERENTIAL OF N 0.02', E 0.12', FROM THE PUBLISHED VALUE OF: WEST MARTELLO TOWER 2 (P.I.D. AA1146)= N 78,401.68 E 394,906.10

NOTE: FOUNDATIONS BENEATH THE SURFACE ARE NOT SHOWN. MEASURED DIMENSIONS EQUAL PLATTED OR DESORBED DIMENSIONS UNLESS INDICATED OTHERWISE.

BEARING BASE:
ALL BEARINGS ARE BASED ON N55°58'24"E ASSUMED ALONG THE CENTERLINE OF ANGELA STREET.

ALL ANGLES DEPICTED ARE 90 DEGREES UNLESS OTHERWISE INDICATED.

ALL UNITS ARE SHOWN IN U.S. SURVEY FEET.

ALL FIELD DATA WAS ACQUIRED BETWEEN 06/20/2014-08/09/2014

NOTE: LEGAL DESCRIPTIONS HAVE BEEN FURNISHED BY THE CLIENT OR HIS/HER REPRESENTATIVE. PUBLIC RECORDS HAVE NOT BEEN RESEARCHED BY THE SURVEYOR TO DETERMINE THE ACCURACY OF THESE DESCRIPTIONS NOR HAVE ADJOINING PROPERTIES BEEN RESEARCHED TO DETERMINE DISCREPANCIES OR OMISSIONS TO SURVEY MAP OR REPORT BY OTHER THAN THE SIGNING PARTY. IT IS PROHIBITED WITHOUT WRITTEN CONSENT OF THE SIGNING PARTY, THE BOLD LINE SHOWN HEREON REPRESENTS THE SURVEYOR'S OPINION OF THE DEED LINES. THE MEAN HIGH WATER LINE WAS NOT DETERMINED FOR THIS SURVEY. THE APPARENT MEAN HIGH WATER LINE IS SHOWN FOR REFERENCE ONLY.

I HEREBY CERTIFY THAT THIS SURVEY WAS MADE UNDER MY RESPONSIBLE CHARGE AND MEETS THE STANDARDS OF PRACTICES AS SET FORTH BY THE FLORIDA BOARD OF PROFESSIONAL SURVEYORS AND MAPPERS IN CHAPTERS 20-14-17 & 20-17-09, FLORIDA ADMINISTRATIVE CODE, PURSUANT TO SECTION 472.027, FLORIDA STATUTES AND COMPLIES WITH CHAPTER 177, PART 9 FLORIDA STATUTES.

DRAFT

NOT VALID WITHOUT THE SIGNATURE AND THE RAISED SEAL OF A FLORIDA SURVEYOR AND MAPPER

ERIC A. ISAACS, PSM #2783, PROFESSIONAL SURVEYOR AND MAPPER, LSW 7847

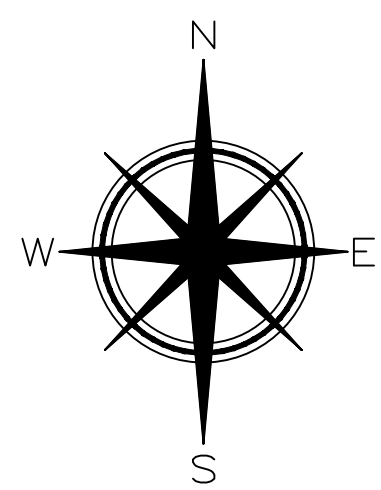
ABBREVIATION LEGEND:		SYMBOL LEGEND:	
BL = BASELINE	FRM = PERMANENT REFERENCE MONUMENT	BENCHMARK	(Symbol)
BM = BENCHMARK	RAW = RIGHT OF WAY LINE	CATCH BASIN	(Symbol)
CB = CONCRETE BLOCK WALL	SSCO = SANITARY SEWER CLEAN-OUT	DRAINAGE MANHOLE	(Symbol)
CL = CENTERLINE	SW = SIDE WALK	CONCRETE UTILITY POLE	(Symbol)
CLP = CHAINLINK FENCE	TBM = TEMPORARY BENCHMARK	ELECTRIC MANHOLE	(Symbol)
CM = CONCRETE MONUMENT	TS = TRAFFIC SIGN	FIRE HYDRANT	(Symbol)
CONC = CONCRETE	UR = UNREADABLE	GLY WIRE	(Symbol)
CPP = CONCRETE POWER POLE	WF = WOOD FENCE	MAILBOX	(Symbol)
EL = ELEVATION	WM = WATER METER	SANITARY CLEANOUT	(Symbol)
ENCL = ENCLOSURE	WPP = WOOD POWER POLE	SANITARY MANHOLE	(Symbol)
EP = EDGE OF PAVEMENT	OH = OVERHEAD WIRES	WATER VALVE	(Symbol)
FL = FLOW LINE	OW = OVERHEAD WIRE	WATER METER	(Symbol)
FH = FIRE HYDRANT	PC = POINT OF CURVE	WELL TEST STATION	(Symbol)
FND = FOUNDATION - GUY WIRE	PC = POINT OF COMPOUND CURVE	WOOD UTILITY POLE	(Symbol)
LS = LANDSCAPING	PK = PARKER SALON HALL		
MB = MAILBOX	PI = POINT OF INTERSECTION		
MEAS = MEASURED			
MF = METAL FENCE			
NSG = NATIONAL GEODETIC SURVEY			
NGVD = NATIONAL GEODETIC VERTICAL DATUM (1929)			

FLORIDA KEYS LAND SURVEYING
 19960 OVERSEAS HIGHWAY
 SUGARLOAF KEY, FL 33042
 PHONE: (305) 394-3690
 FAX: (305) 509-7373
 EMAIL: FKL5email@Gmail.com

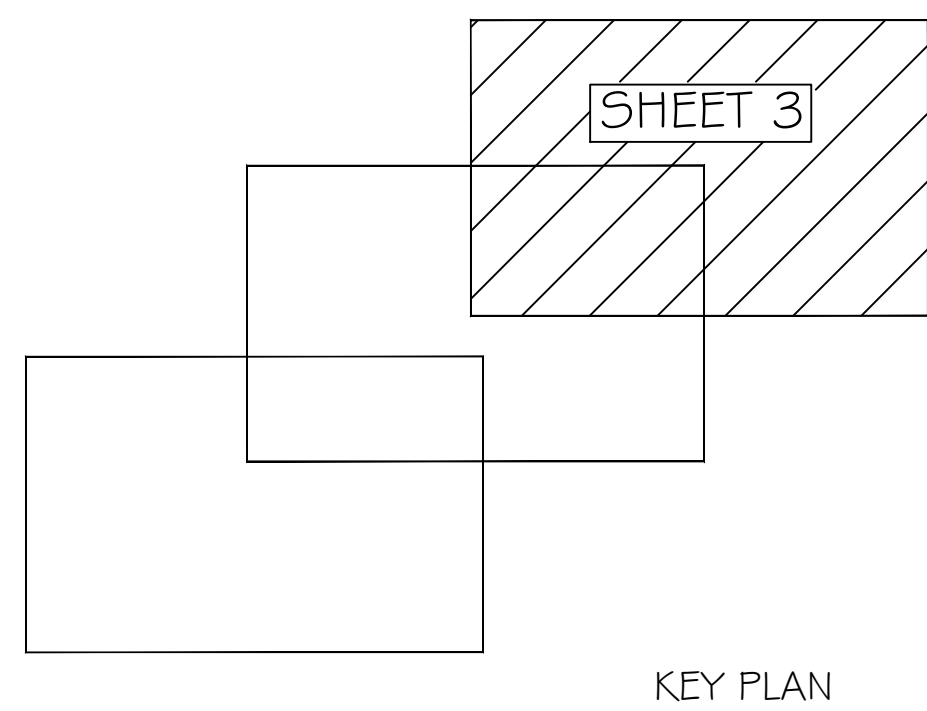
SPECIFIC PURPOSE SURVEY			
1200-1500 BLOCK OF ANGELA STREET KEY WEST, MONROE COUNTY, STATE OF FLORIDA			
DATE: PRELIMINARY 8/11/14	SURVEY BY: EAI	PROJECT: CKW PO#077066	
ORDER:	DRAWN BY: MPB	H. SCALE: 1"=20'	
BOOK:	CHECKED BY:	SHEET 2 OF 3	



LOCATION MAP - N.T.S.
5-T 68 5-R 25 E



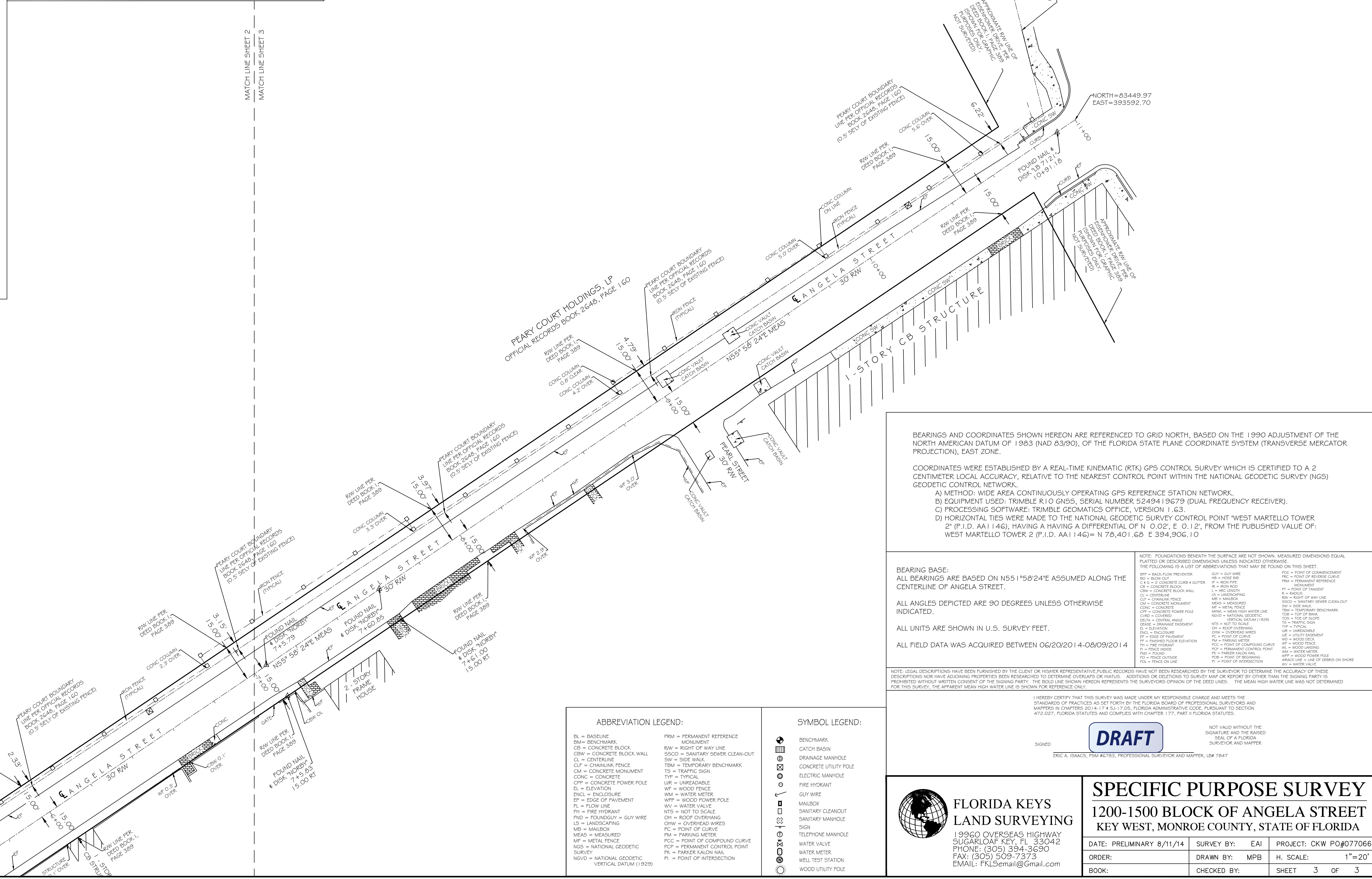
1"=20'-0"
0 10 20 40
*VERIFY ORIGINAL SCALE OF 2"



SPECIFIC PURPOSE SURVEY

1200-1500 BLOCK OF ANGELA STREET

KEY WEST, MONROE COUNTY, STATE OF FLORIDA



BEARINGS AND COORDINATES SHOWN HEREON ARE REFERENCED TO GRID NORTH, BASED ON THE 1990 ADJUSTMENT OF THE NORTH AMERICAN DATUM OF 1983 (NAD 83/90), OF THE FLORIDA STATE PLANE COORDINATE SYSTEM (TRANSVERSE MERCATOR PROJECTION), EAST ZONE.

COORDINATES WERE ESTABLISHED BY A REAL-TIME KINEMATIC (RTK) GPS CONTROL SURVEY WHICH IS CERTIFIED TO A 2 CENTIMETER LOCAL ACCURACY, RELATIVE TO THE NEAREST CONTROL POINT WITHIN THE NATIONAL GEODETIC SURVEY (NGS) GEODETIC CONTROL NETWORK.

A) METHOD: WIDE AREA CONTINUOUSLY OPERATING GPS REFERENCE STATION NETWORK.
 B) EQUIPMENT USED: TRIMBLE R10 GNSS, SERIAL NUMBER 5249419679 (DUAL FREQUENCY RECEIVER).
 C) PROCESSING SOFTWARE: TRIMBLE GEOMATICS OFFICE, VERSION 1.63.
 D) HORIZONTAL TIES WERE MADE TO THE NATIONAL GEODETIC SURVEY CONTROL POINT "WEST MARTELLO TOWER 2" (P.I.D. AA1146), HAVING A HAVING A DIFFERENTIAL OF N 0.02'; E 0.12'; FROM THE PUBLISHED VALUE OF: WEST MARTELLO TOWER 2 (P.I.D. AA1146)= N 78.401.68 E 394.906.10

NOTE: FOUNDATIONS BENEATH THE SURFACE ARE NOT SHOWN. MEASURED DIMENSIONS EQUAL PLATTED OR DESCRIBED DIMENSIONS UNLESS INDICATED OTHERWISE.

BEARING BASE:
ALL BEARINGS ARE BASED ON N55°58'24"E ASSUMED ALONG THE CENTERLINE OF ANGELA STREET.

ALL ANGLES DEPICTED ARE 90 DEGREES UNLESS OTHERWISE INDICATED.

ALL UNITS ARE SHOWN IN U.S. SURVEY FEET.

ALL FIELD DATA WAS ACQUIRED BETWEEN 06/20/2014-09/09/2014

NOTE: LEGAL DESCRIPTIONS HAVE BEEN FURNISHED BY THE CLIENT OR HIS/HER REPRESENTATIVE. PUBLIC RECORDS HAVE NOT BEEN RESEARCHED BY THE SURVEYOR TO DETERMINE THE ACCURACY OF THESE DESCRIPTIONS NOR HAVE ADJOINING PROPERTIES BEEN RESEARCHED TO DETERMINE OVERLAPS OR VIOLATIONS. ADDITIONS OR OMISSIONS TO SURVEY MAP OR REPORT BY OTHER THAN THE SIGNING PARTY IS PROHIBITED WITHOUT WRITTEN CONSENT OF THE SIGNING PARTY. THE BOLD LINE SHOWN HEREON REPRESENTS THE SURVEYOR'S OPINION OF THE DEED LINES. THE MEAN HIGH WATER LINE WAS NOT DETERMINED FOR THIS SURVEY. THE APPARENT MEAN HIGH WATER LINE IS SHOWN FOR REFERENCE ONLY.

I HEREBY CERTIFY THAT THIS SURVEY WAS MADE UNDER MY RESPONSIBLE CHARGE AND MEETS THE STANDARDS OF PRACTICES AS SET FORTH BY THE FLORIDA BOARD OF PROFESSIONAL SURVEYORS AND MAPPERS IN CHAPTERS 2014-17 & 2015-17, FLORIDA ADMINISTRATIVE CODE, PURSUANT TO SECTION 472.027, FLORIDA STATUTES AND COMPLIED WITH CHAPTER 177, PART 9 FLORIDA STATUTES.

DRAFT

NOT VALID WITHOUT THE SIGNATURE AND THE RAISED SEAL OF A FLORIDA SURVEYOR AND MAPPER

ERIC A. ISAACS, PSM #6783, PROFESSIONAL SURVEYOR AND MAPPER, LSW 7847

ABBREVIATION LEGEND:		SYMBOL LEGEND:	
BL = BASELINE	FRM = PERMANENT REFERENCE MONUMENT	⊕ = BENCHMARK	⊕ = BENCHMARK
CB = CONCRETE BLOCK WALL	RAW = RIGHT OF WAY LINE	⊕ = CATCH BASIN	⊕ = DRAINAGE MANHOLE
CL = CENTERLINE	SSCO = SANITARY SEWER CLEAN-OUT	⊕ = CONCRETE UTILITY POLE	⊕ = CONCRETE UTILITY POLE
CLF = CHAINLINK FENCE	SW = SIDE WALK	⊕ = ELECTRIC MANHOLE	⊕ = ELECTRIC MANHOLE
CONC = CONCRETE MONUMENT	TBM = TEMPORARY BENCHMARK	⊕ = FIRE HYDRANT	⊕ = FIRE HYDRANT
CONC = CONCRETE	TS = TRAFFIC SIGN	⊕ = GUY WIRE	⊕ = GUY WIRE
CPP = CONCRETE POWER POLE	UR = UNREADABLE	⊕ = MAILBOX	⊕ = MAILBOX
EL = ELEVATION	WF = WOOD FENCE	⊕ = SANITARY CLEANOUT	⊕ = SANITARY CLEANOUT
ENCL = ENCLOSURE	WM = WATER METER	⊕ = SANITARY MANHOLE	⊕ = SANITARY MANHOLE
EP = EDGE OF PAVEMENT	WPP = WOOD POWER POLE	⊕ = SIGN	⊕ = SIGN
FL = FLOW LINE	OW = OVERHEAD WIRES	⊕ = TELEPHONE MANHOLE	⊕ = TELEPHONE MANHOLE
FH = FIRE HYDRANT	NTS = NOT TO SCALE	⊕ = WATER VALVE	⊕ = WATER VALVE
FND = FOUNDATION	OH = ROOF OVERHANG	⊕ = WELL TEST STATION	⊕ = WELL TEST STATION
LS = LANDSCAPING	OWH = OVERHEAD WIRES	⊕ = WOOD UTILITY POLE	⊕ = WOOD UTILITY POLE
MB = MAILBOX	PC = POINT OF CURVE		
MEAS = MEASURED	PCP = POINT OF COMPOUND CURVE		
MF = METAL FENCE	PK = PARKER SALON HALL		
NSG = NATIONAL GEODETIC SURVEY	PI = POINT OF INTERSECTION		
NGVD = NATIONAL GEODETIC VERTICAL DATUM (1929)			

FLORIDA KEYS LAND SURVEYING
 19960 OVERSEAS HIGHWAY
 SUGARLOAF KEY, FL 33042
 PHONE: (305) 394-3690
 FAX: (305) 509-7373
 EMAIL: FKL5email@Gmail.com

SPECIFIC PURPOSE SURVEY
 1200-1500 BLOCK OF ANGELA STREET
 KEY WEST, MONROE COUNTY, STATE OF FLORIDA

DATE: PRELIMINARY 8/11/14	SURVEY BY: EAI	PROJECT: CKW PO#077066
ORDER:	DRAWN BY: MPB	H. SCALE: 1"=20'
BOOK:	CHECKED BY:	SHEET 3 OF 3