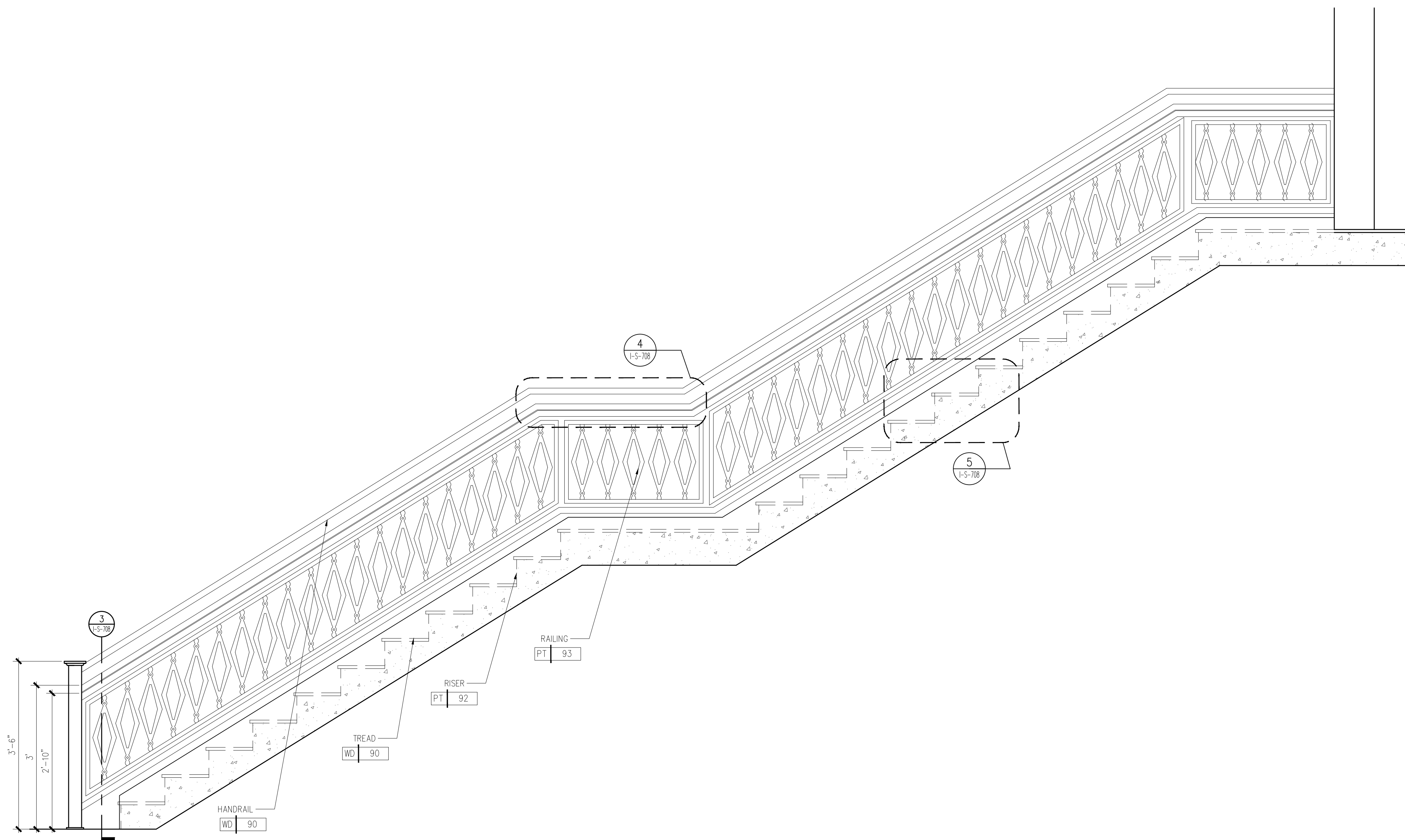
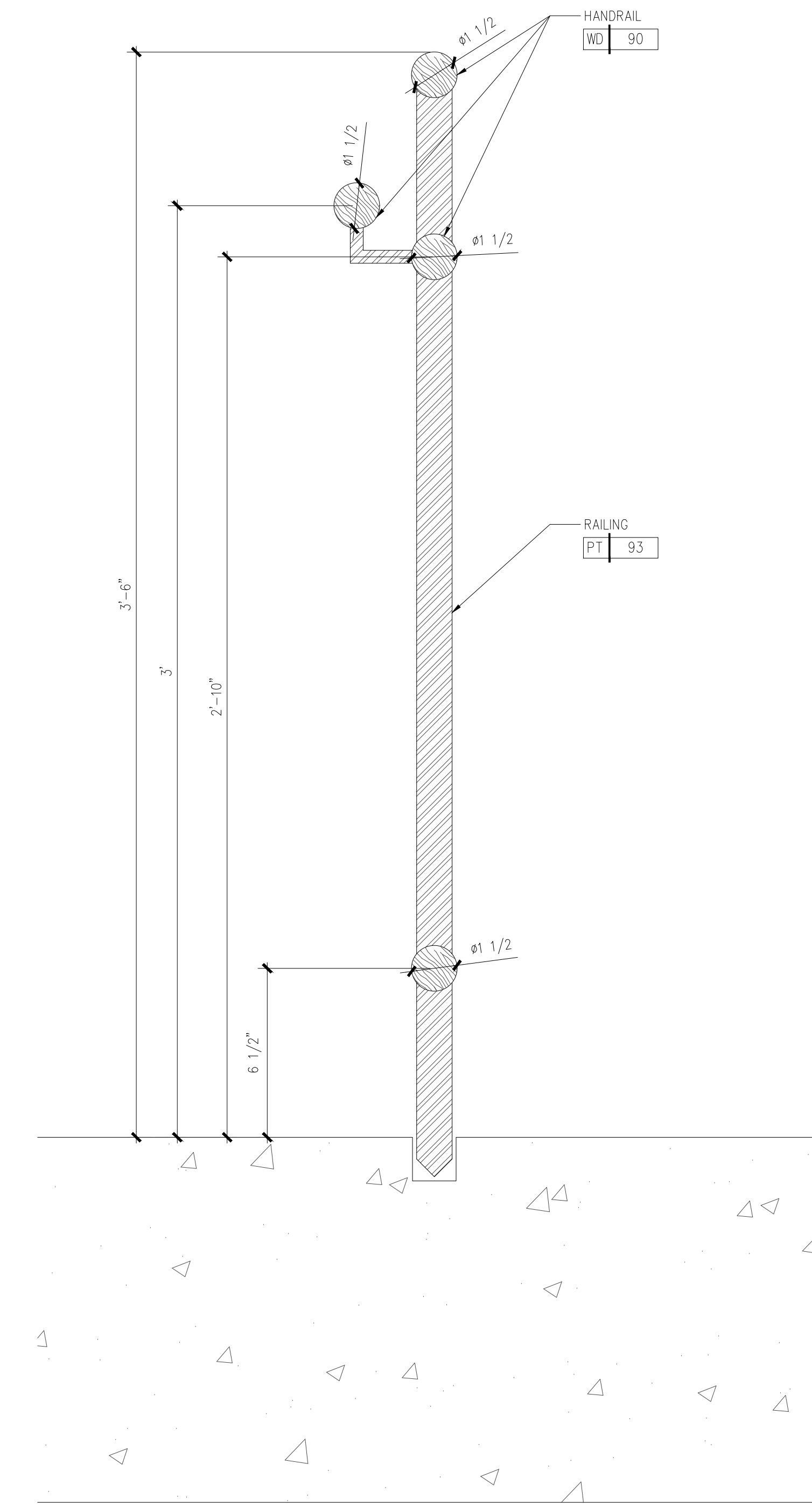


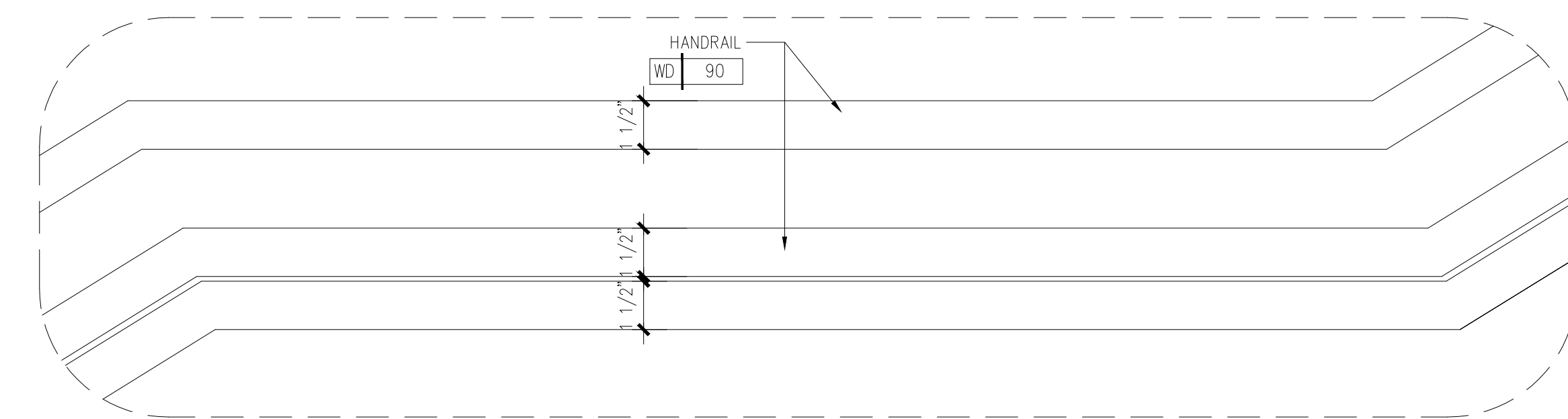
01 STAIRCASE DETAIL : PLAN  
3/4" = 1'-0"



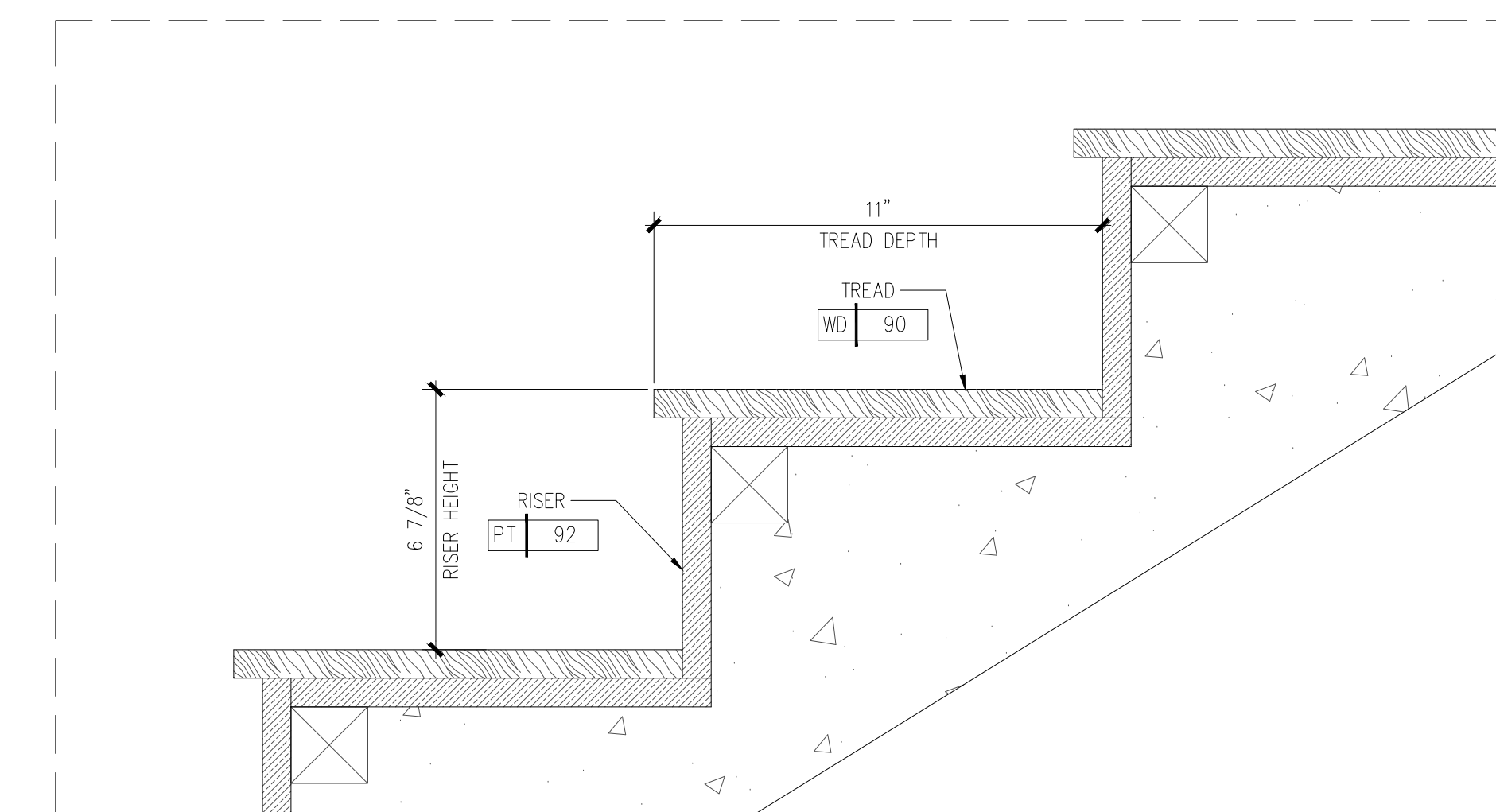
02 STAIRCASE DETAIL : SECTIONAL ELEVATION  
3/4" = 1'-0"



03 STAIRCASE DETAIL : HANDRAIL SECTION  
3" = 1'-0"



04 STAIRCASE DETAIL : HANDRAIL  
3" = 1'-0"



05 STAIRCASE DETAIL : RISER  
3" = 1'-0"

GENERAL NOTE:  
ARCH TO CONFIRM STAIR CODE REQUIREMENTS

Wimberly  
INTERIORS

strategy planning architecture landscape interiors  
New York | NY | 212 274 2626 watg.com

PARK  
HOTELS & RESORTS

CURIO  
COLLECTION  
by Hilton™

CASA MARINA  
KEY WEST, FLORIDA  
SUN SUN  
POOL BAR & GRILL

ISSUES AND REVISIONS

100% DD SET	22 MAY 2023
100% CD SET	06 JUNE 2023

Copyright © 2015 WATG. All rights reserved.

SHEET TITLE

STAIRCASE DETAILS

PROJECT NO. 195066

DATE: 03/28/2023

SHEET NO.

I-S-708

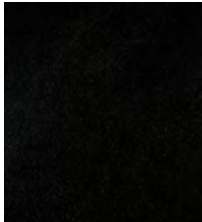
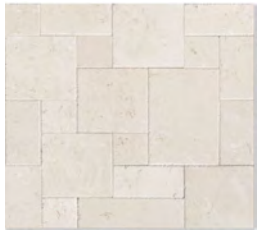
**FINISH SCHEDULE - STONE**

**GUESTROOMS AND PUBLIC AREAS**



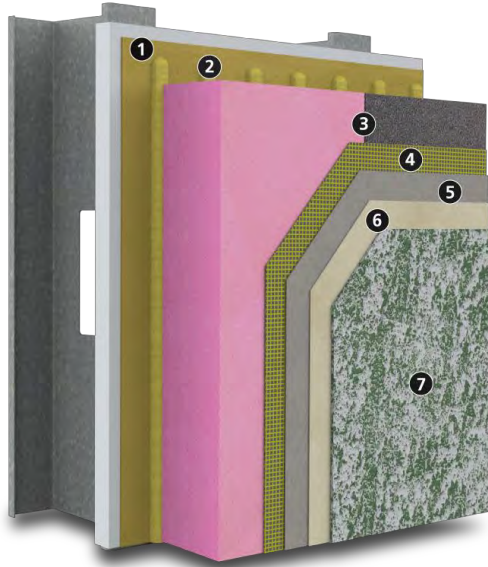
**286 Madison Avenue, 17th Fl  
New York, NY 10017  
Tel: 1-212-274-2626  
Fax: 1-212-274-2627**

Project Name: Casa Marina  
Project Number: 195038  
Date: 01/27/2023  
Revision: 06/06/2023

Code	Description	Manufacturer	Image
ST-83	Stone at Restrooms Threshold Name: Absolute black / SL10552 Type: Granite Size/ Thickness: Full jamb. 3/4" thick Finish: Polished / To be sealed	Marble Systems 15 East 16th Street New York, NY 10003 Attn: Arda Dalkikic T: 973.610.7180 E: arda@marblesystems.com	
ST-90	Stone at Sun Sun 1st fl Flooring and Base Type/Color: Limestone / beige Name: Rigo Beige Size- Thickness: 12" x 12", 12" x 6", 6" x 6" / Base 12" x 4" Finish: Sandblasted	Stone Source 215 Park Avenue South T: 212.979.6400 Cell: 646.981.0423 Att: David Seltzer <a href="mailto:dseltzer@stonesource.com">dseltzer@stonesource.com</a>	
ST-91	Stone at Sun Sun 1st fl bar base Type/Color: Limestone / beige Name: Rigo Beige Size- Thickness: Slab 7" h Finish: Sandblasted Grout:	Stone Source 215 Park Avenue South T: 212.979.6400 Cell: 646.981.0423 Att: David Seltzer <a href="mailto:dseltzer@stonesource.com">dseltzer@stonesource.com</a>	

# StoTherm® ci XPS

Decorative cladding with R-5 continuous insulation and StoGuard® Air and Water-resistive Barrier combined with Sto high performance finishes



Substrate: Glass Mat Gypsum sheathing in compliance with ASTM C1177, Exterior or Exposure I wood-based sheathing (plywood or OSB), cement board in compliance with ASTM C1325, or code compliant concrete, concrete masonry or portland cement plaster, existing structurally sound, uncoated brick or other masonry wall construction.

1)	Air Barrier and Water-resistive Barrier: StoGuard
2)	Adhesive: Sto TurboStick®
3)	Insulation: XPS Type X Insulation listed by Sto Corp.: <ul style="list-style-type: none"> <li>Owens Corning® Foamular® CI-C or NGX™ CI-C</li> <li>Dupont™ Styrofoam™ Brand Panel Core ST-100</li> </ul>
4)	Reinforcement: Sto Mesh (embedded in Sto base coat)
5)	Base Coat options: Sto BTS Plus, Sto BTS Xtra, Sto Primer/Adhesive, Sto Primer/Adhesive-B
6)	Primer: StoPrime Sand (optional)
7)	Finish: choose among, <ul style="list-style-type: none"> <li>Sto Textured Finishes</li> <li>StoCast Finishes</li> <li>Sto Signature and Sto Specialty Finishes</li> </ul>

System Accessory: StoSeal STPE Sealant for use as an exterior weather seal around wall penetrations, at dynamic joints in wall construction, and as an interior air seal for air barrier continuity

## System Description

StoTherm ci XPS is a decorative and protective exterior wall cladding that combines superior air and weather tightness with excellent thermal performance and durability. It incorporates continuous exterior insulation and StoGuard Air and Water-resistive Barrier with Sto's high performance finishes in a fully tested wall cladding assembly.

## Uses

StoTherm ci XPS can be used in residential or commercial wall construction where energy efficiency, superior aesthetics, and air and moisture control are essential in the climate extremes of North America.

Features	Benefits
Design versatility	Aesthetic and curb appeal easy to achieve
Continuous exterior insulation, R-5 per inch, no mechanical fasteners	Energy efficient, reduced heating and cooling costs
Quick-set adhesive, no mechanical fasteners	Fast installation, no thermal bridging
Continuous air and water-resistive barrier	Protects against mold and moisture problems
ICC-ES listed and evaluated	Fully tested building code compliant assembly

## Properties

Weight (not including sheathing and frame)	< 2 psf (10 kg/m <sup>2</sup> )
Thickness (insulation)	1 to 6 inches (25 – 152 mm)
R-value (not including sheathing and frame)	5.0 – 30 ft <sup>2</sup> •h•°F / Btu (0.88-5.28 m <sup>2</sup> •K / W)
Wind Load Resistance	Tested up to ± 175 psf (8.37 kPa)
Compliance	<ul style="list-style-type: none"> <li>IBC, IRC, IECC - 2015, 2018</li> <li>ASHRAE 90.1-2019</li> </ul>
Construction Types and Fire Resistance	<ul style="list-style-type: none"> <li>I-V, NFPA 285 tested for types I-IV</li> <li>1&amp;2 hour rated walls (based on engineering judgements)</li> </ul>

## Warranty

10, 12, or 15 year Limited Warranty, depending on options selected

## Maintenance

Requires periodic cleaning to maintain appearance, repair to cracks and impact damage if they occur, recoating to enhance appearance of weathered finish. Sealants and other façade components must be maintained to prevent water infiltration.

## System Bulletin

# StoTherm® ci XPS

Decorative cladding with R-5 continuous insulation and StoGuard® Air and Water-resistive Barrier combined with Sto high performance finishes

Limitations
Minimum insulation board thickness is 1 inch (25 mm). Maximum insulation board thickness is 6 inches (305 mm) with Sto Textured Finishes. If StoCast Finishes are used on noncombustible construction maximum thickness is 2 inches (51mm) with Dupont Styrofoam Panel Core ST-100, or 3 inches (70mm) with Owens Corning Foamular CI-C or NGX CI-C. Refer to ICC ESR 1748 for system components when used in noncombustible construction (Types I-IV).
Fire resistance rated assemblies limited to 4 inches (102mm) maximum insulation board thickness, except as noted above for noncombustible construction
Structural back-up wall must be level to ¼ inch in 10 ft (6mm in 3.0m)
Wind load resistance: ± 175 psf (8.37 kPa) ultimate loads achieved. Ultimate wind load resistance also depends on sheathing, sheathing attachment, and stiffness of supporting construction. Design for maximum allowable deflection of L/240.
Impact resistance: supplemental reinforcing mesh layers, cement board overlay or other design adjustments may be prudent for areas adjacent to heavy pedestrian traffic or other areas of high impact or abuse. Refer to Sto Guide Details.
For use on vertical above grade walls only. Do not use below grade or on roofs or roof-like surfaces.
Insulation material is flammable. Keep away from flame, ignition sources, high heat, and temperatures in excess of 165°F [74° C]).
Dark finish colors with LRV (Light Reflectance Value) < 20 are not recommended.
Air Barrier, insulation board, and base coat materials are not intended for prolonged weather exposure. Allow 180 days maximum between application of air and water-resistive barrier and insulation board.
Refer to specific component product bulletins and packaging for other limitations that may apply involving use, handling, and storage of component materials.

Sustainable Design	
<b>Air Quality and VOC Compliance</b>	
All finish coatings, adhesives, air barrier detail components and coatings meet US EPA (40 CFR 59) and South Coats AQMD (Rule 1113) emission standards for Building Envelope Coatings: VOC less than 50 g/L.	
<b>Sustainability</b>	
The system has high potential for LEED and other sustainability program credits based on efficient and effective use of a continuous air barrier and continuous exterior insulation and the resulting reductions in energy use and greenhouse gas emissions. The use of light weight metal studs and light weight finishes has positive impacts on life cycle energy use by reducing dead loads and structural support requirements when compared to mass wall and full thickness/weight veneer units. Insulation boards are available with reduced HFC blowing agent and GWP, depending on State regulatory requirements. Refer to <a href="#">Owens-Corning</a> or <a href="#">Dupont</a> for more information.	
<b>Regulatory Compliance and Standards Testing</b>	
ICC ESR No. 1748 covering StoTherm ci XPS	Complies with 2015 and 2018 IBC, IRC and IECC
ICC ESR No. 1233 covering StoGuard	Complies with 2015 and 2018 IBC, IRC and IECC
ASHRAE 90.1-2019	Complies with Section 5, Building Envelope, air barrier and continuous insulation requirements
ASTM E 2357	Air and Water-resistive Barrier system meets air leakage resistance criteria of ≤ 0.04 cfm/ft <sup>2</sup> at 1.57 psf (0.2 L/s•m <sup>2</sup> at 75 Pa)
NFPA 285	Meets acceptance criteria for use on Types I, II, III, IV (noncombustible) construction with up to 6 inch (152mm) thick Sto listed XPS Type X insulation board and Sto Textured Finishes, up to 3 inch (76mm) thick with StoCast Finishes and Owens Corning Foamular CI-C or NGX CI-C, 2 inch (51mm) thick with StoCast Finishes and Dupont Styrofoam Panel Core ST-100. Refer to ICC ESR-1748 for details.
ASTM E 119	Meets requirements for use over fire-resistance-rated wall assemblies (refer to ICC ESR-1748 for details) with maximum 4 inch (102mm) thick insulation board, except as noted above for noncombustible construction

<b>Sto Corp.</b> 3800 Camp Creek Parkway Building 1400, Suite 120 Atlanta, GA 30331  Tel: 404-346-3666 Toll Free: 1-800-221-2397 Fax: 404 346-3119 <b>www.stocorp.com</b>	<b>SB-5300</b> Revision: 013 Date: 05/2023	<p style="text-align: center;"><b>Attention</b></p> <p>Sto products are intended for use by qualified professional contractors, not consumers, as a component of a larger construction assembly as specified by a qualified design professional, general contractor or builder. They should be installed in accordance with those specifications and Sto's instructions. Sto Corp. disclaims all, and assumes no, liability for on-site inspections, for its products applied improperly, or by unqualified persons or entities, or as part of an improperly designed or constructed building, for the nonperformance of adjacent building components or assemblies, or for other construction activities beyond Sto's control. Improper use of Sto products or use as part of an improperly designed or constructed larger assembly or building may result in serious damage to this product, and to the structure of the building or its components. <b>STO CORP. DISCLAIMS ALL WARRANTIES EXPRESS OR IMPLIED EXCEPT FOR EXPLICIT LIMITED WRITTEN WARRANTIES ISSUED TO AND ACCEPTED BY BUILDING OWNERS IN ACCORDANCE WITH STO'S WARRANTY PROGRAMS WHICH ARE SUBJECT TO CHANGE FROM TIME TO TIME.</b> For the fullest, most current information on proper application, clean-up, mixing and other specifications and warranties, cautions and disclaimers, please refer to the Sto Corp. website, <a href="http://www.stocorp.com">www.stocorp.com</a>.</p>
---	--	--



DEPARTMENT OF REGULATORY AND ECONOMIC RESOURCES (RER)  
BOARD AND CODE ADMINISTRATION DIVISION

**NOTICE OF ACCEPTANCE (NOA)**

MIAMI-DADE COUNTY  
PRODUCT CONTROL SECTION  
11805 SW 26 Street, Room 208  
Miami, Florida 33175-2474  
T (786) 315-2590 F (786) 315-2599  
[www.miamidade.gov/economy](http://www.miamidade.gov/economy)

**Sto Corporation**  
**3800 Camp Creek Parkway**  
**Bldg 1400, Ste 120**  
**Atlanta, GA 30331**

**SCOPE:** This NOA is being issued under the applicable rules and regulations governing the use of construction materials. The documentation submitted has been reviewed and accepted by Miami-Dade County RER-Product Control Section to be used in Miami-Dade County and other areas where allowed by the Authority Having Jurisdiction (AHJ).

This NOA shall not be valid after the expiration date stated below. The Miami-Dade County Product Control Section (In Miami-Dade County) and/ or the AHJ (in areas other than Miami-Dade County) reserve the right to have this product or material tested for quality assurance purposes. If this product or material fails to perform in the accepted manner, the manufacturer will incur the expense of such testing and the AHJ may immediately revoke, modify, or suspend the use of such product or material within their jurisdiction. RER reserves the right to revoke this acceptance, if it is determined by Miami-Dade County Product Control Section that this product or material fails to meet the requirements of the applicable building code.

This product is approved as described herein and has been designed to comply with the Florida Building Code, including the High Velocity Hurricane Zone.

**DESCRIPTION: Sto Therm ci LM 180 CMU EIF System – L.M.I.**

**APPROVAL DOCUMENT:** Drawing titled “Sto Therm ci LM. 180. CMU. D”, sheets 1 through 3 of 3, prepared by Sto Corporation, dated 10/21/2014 and last revised on 06/22/21, prepared by Sto Corporation, signed and sealed by Kurt W. Heinrichs, P.E., bearing the Miami-Dade County Product Control revision stamp with the Notice of Acceptance number and expiration date by the Miami-Dade County Product Control Section.

**MISSILE IMPACT RATING: Large and Small Missile Impact Resistant**

**LABELING:** Each unit shall bear a permanent label with the manufacturer's name or logo, city, state, model/series and following statement: "Miami-Dade County Product Control Approved", unless otherwise noted herein. Components of this product come in different size buckets or drums. Each container needs to be labeled. Unit is further defined as each individual board of insulation and roll of reinforcing mesh.

**RENEWAL** of this NOA shall be considered after a renewal application has been filed and there has been no change in the applicable building code negatively affecting the performance of this product.

**TERMINATION** of this NOA will occur after the expiration date or if there has been a revision or change in the materials, use, and/ or manufacture of the product or process. Misuse of this NOA as an endorsement of any product, for sales, advertising or any other purposes shall automatically terminate this NOA. Failure to comply with any section of this NOA shall be cause for termination and removal of NOA.

**ADVERTISEMENT:** The NOA number preceded by the words Miami-Dade County, Florida, and followed by the expiration date may be displayed in advertising literature. If any portion of the NOA is displayed, then it shall be done in its entirety.

**INSPECTION:** A copy of this entire NOA shall be provided to the user by the manufacturer or its distributors and shall be available for inspection at the job site at the request of the Building Official.

This NOA **revises NOA #20-0211.04** and consists of this page 1 and evidence pages E-1, E-2 and E-3, as well as approval document mentioned above.

The submitted documentation was reviewed by **Ishaq I. Chanda, P.E.**



*Ishaq I. Chanda*

**NOA No. 21-0708.13**  
**Expiration Date: May 21, 2025**  
**Approval Date: September 09, 2021**  
**Page 1**

**Sto Corporation**

**NOTICE OF ACCEPTANCE: EVIDENCE SUBMITTED**

**1. EVIDENCE SUBMITTED UNDER PREVIOUS NOA's**

**A. DRAWINGS “Submitted under NOA # 15-0226.03”**

1. Drawing titled “Sto Therm ci LM. 180. CMU. D”, sheets 1 through 3 of 3, prepared by Sto Corporation, dated 10/21/2014, signed and sealed by Kurt W. Heinrichs, P.E.

**B. TESTS “Submitted under NOA # 15-0226.03”**

1. Test reports on 1) Uniform Static Air Pressure Test, Loading per FBC TAS 202-94  
2) Cyclic Wind Pressure Loading per FBC, TAS 203-94  
along with marked-up drawings and installation diagram of a Sto Therm ci HI-CM-180 EIFS over CMU, prepared by Intertek/Architectural Testing, Inc., Test Report No. **D7521.01-550-18**, dated 09/12/2014, signed and sealed by Shawn G. Collins, P.E.

**C. CALCULATIONS**

1. None.

**D. QUALITY ASSURANCE**

1. Miami-Dade Department of Regulatory and Economic Resources (RER)

**E. MATERIAL CERTIFICATIONS “Submitted under NOA # 15-0226.03”**

1. Notice of Acceptance No. **11-1222.01**, issued to Carpenter Company, for their Carpenter EPS Block Type Insulation, approved on 11/29/2012, and expiring on 04/11/2017.

**F. STATEMENTS “Submitted under NOA # 15-0226.03”**

1. Statement letter of code conformance to the 2010 and 5<sup>th</sup> edition (2014) FBC issued by NOVA Engineering and Environmental, dated 02/16/2015, signed and sealed by Kurt W. Heinrichs, P.E.
2. Statement letter of no financial interest issued by NOVA Engineering and Environmental, dated 02/16/2015, signed and sealed by Kurt W. Heinrichs, P.E.

*Ishaq I. Chanda*

---

**Ishaq I. Chanda , P.E.**  
**Product Control Unit Supervisor**  
**NOA No. 21-0708.13**  
**Expiration Date: May 21, 2025**  
**Approval Date: September 09, 2021**

**Sto Corporation**

**NOTICE OF ACCEPTANCE: EVIDENCE SUBMITTED**

**2. Evidence submitted under NOA #18-0319.14**

**A. DRAWINGS**

1. Drawing No. Sto Therm ci LM. 180. CMU. D”, sheets 1 through 3 of 3, prepared by Sto Corporation, dated February 2018, signed and sealed by Kurt W. Heinrichs, P.E.

**B. TESTS**

1. None.

**C. CALCULATIONS**

1. None.

**D. QUALITY ASSURANCE**

1. Miami-Dade Department of Regulatory and Economic Resources (RER)

**E. MATERIAL CERTIFICATIONS**

1. Notice of Acceptance No. **17-0417.01**, issued to Carpenter Company, for their Carpenter EPS Block Type Insulation, approved on 07/20/2017, and expiring on 04/11/2022.

**F. STATEMENTS**

1. Statement letter of code conformance to **FBC 6<sup>th</sup> Edition (2017)**, issued and prepared by NOVA Engineering and Environmental, dated 03/07/2018, signed and sealed by Kurt W. Heinrichs, P.E.

*Ishaq I. Chanda*

---

**Ishaq I. Chanda , P.E.**  
**Product Control Unit Supervisor**  
**NOA No. 21-0708.13**  
**Expiration Date: May 21, 2025**  
**Approval Date: September 09, 2021**

**Sto Corporation**

**NOTICE OF ACCEPTANCE: EVIDENCE SUBMITTED**

**3. New Evidence submitted**

**A. DRAWINGS**

1. Drawing titled “Sto Therm ci LM. 180. CMU. D”, sheets 1 through 3 of 3, prepared by Sto Corporation, dated 10/21/2014 and last revised on 06/22/21, prepared by Sto Corporation, signed and sealed by Kurt W. Heinrichs, P.E.

Note: This revision is for FBC 2020 update only.

**B. TESTS**

1. None.

**C. CALCULATIONS**

1. None.

**D. QUALITY ASSURANCE**

1. Miami-Dade Department of Regulatory and Economic Resources (RER).

**E. MATERIAL CERTIFICATIONS**

1. Notice of Acceptance No. **17-0417.01**, issued to Carpenter Company, for their Carpenter EPS Block Type Insulation, approved on 07/20/2017, and expiring on 04/11/2022.

**F. STATEMENTS**

1. Statement letter of code conformance to **FBC 7<sup>th</sup> Edition (2020)**, issued and prepared by NOVA Engineering and Environmental, dated 06/22/21, signed and sealed by Kurt W. Heinrichs, P.E.
2. Statement letter dated June 16, 2021, issued by Sto requesting Product for FBC 2020 update, signed by Kevin Schroeder, Senior Tech Rep.

**G. OTHER**

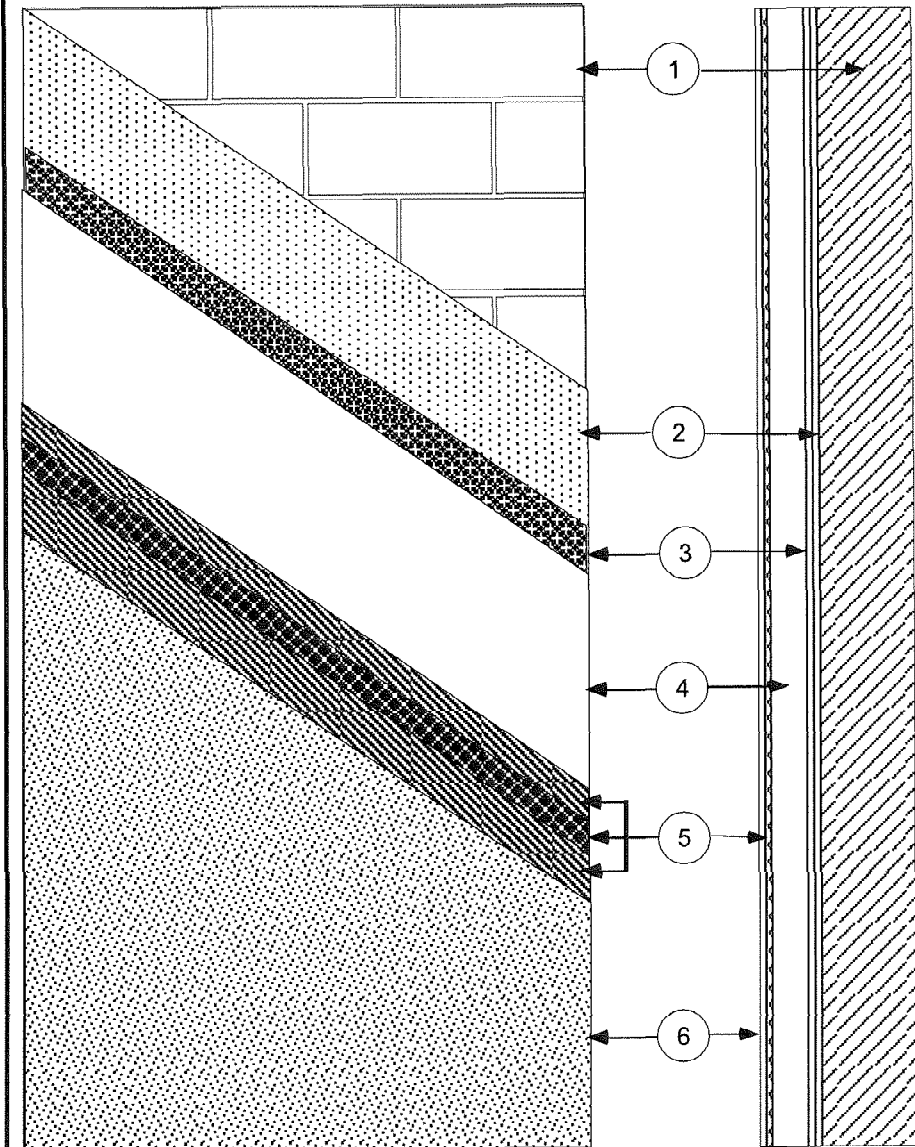
1. This NOA revises NOA # **20-0211.04**, expiring 05/21/2025.

*Ishaq I. Chanda*

---

**Ishaq I. Chanda, P.E.**  
**Product Control Unit Supervisor**  
**NOA No. 21-0708.13**  
**Expiration Date: May 21, 2025**  
**Approval Date: September 09, 2021**





**DESCRIPTION: STOTHERM CI HI-CM 180**

**COMPONENTS AND INSTALLATION**

- 1 MINIMUM 8" WIDE CMU CONSTRUCTION COMPLYING WITH APPLICABLE PROVISIONS OF FLORIDA BUILDING CODE.
- 2 STO GOLD COAT AIR/MOISTURE BARRIER APPLIED PER MANUFACTURERS PUBLISHED PRODUCT INSTRUCTIONS.
- 3 STO PRIMER/ADHESIVE-B, APPLIED AS ADHESIVE TO BACK OF INSULATION BOARDS IN VERTICAL RIBBONS PER MANUFACTURERS PUBLISHED PRODUCT INSTRUCTIONS.
- 4 MINIMUM 1" THICK EPS INSULATION BOARD. EPS SHALL BE SUPPLIED BY STO LICENSED BOARD MOLDER WITH A CURRENT MIAMI-DADE COUNTY NOA.
- 5 STO MESH (4.5 OZ/SQ.YD.) EMBEDDED IN STO PRIMER/ADHESIVE-B, APPLIED AS REINFORCED BASE COAT PER MANUFACTURERS PUBLISHED PRODUCT INSTRUCTIONS.
- 6 STO TEXTURED FINISH APPLIED PER MANUFACTURERS PUBLISHED PRODUCT INSTRUCTIONS.

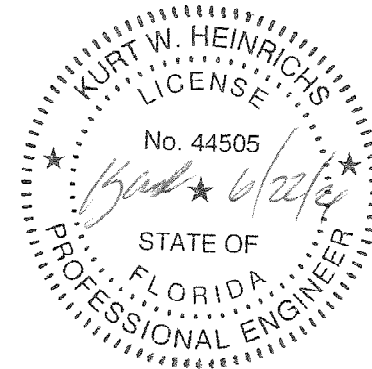
**GENERAL NOTES**

- 1 THIS SYSTEM HAS BEEN DESIGNED IN ACCORDANCE WITH THE 2020 FLORIDA BUILDING CODE.
- 2 THIS SYSTEM HAS BEEN TESTED IN ACCORDANCE WITH FLORIDA BUILDING CODE PROTOCOLS TAS-202 AND TAS-203, STRUCTURAL AND CYCLIC TESTING.
- 3 THIS SYSTEM SHALL BE APPLIED BY A LICENSED PLASTERING CONTRACTOR FOLLOWING THE RECOMMENDATIONS OF STO CORP., THIS NOTICE OF ACCEPTANCE, AND APPLICABLE SECTIONS OF THE FLORIDA BUILDING CODE.
- 4 THE ENGINEER AND/OR ARCHITECT OF RECORD FOR EACH PROJECT USING THIS SYSTEM SHALL ENSURE CONFORMANCE AS REQUIRED BY GOVERNING CODES AND THIS DOCUMENT.
- 5 INSULATION SHALL BE APPLIED IN A RUNNING BOND PATTERN.
6. ALL MASONRY CONCRETE MASONRY UNITS SHALL COMPLY WITH ASTM C90 AND TYPE S MORTAR PER ASTM C270.
- 7 DETAILS ON PAGES 2 AND 3 OF THESE DRAWINGS ARE TYPICAL AND SHOW INTENT TO PREVENT WATER INFILTRATION INTO AND BEHIND THE SYSTEM. ALTERNATE DETAILS AND SPECIFIC CONDITIONS NOT COVERED BY THE TYPICAL DETAILS ARE THE RESPONSIBILITY OF THE LICENSED DESIGN PROFESSIONAL IN CONSULTATION WITH STO CORP.

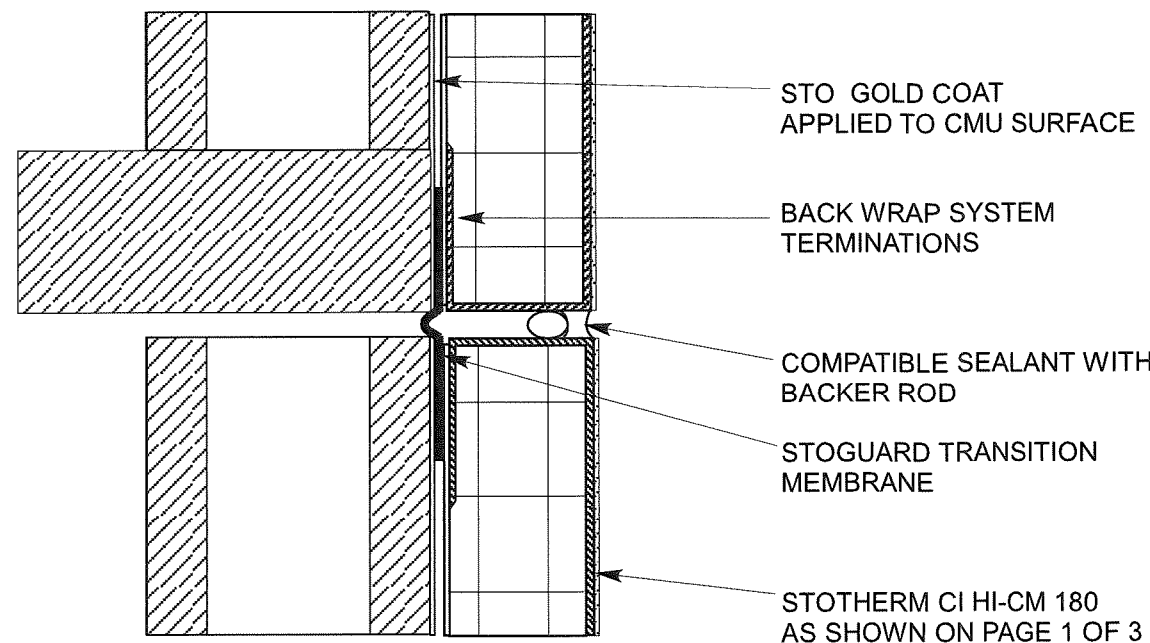
Design Pressure Rating  
- 180 psf

**PRODUCT REVISED**  
as complying with the Florida  
Building Code  
NOA-No. **21-0708.13**  
Expiration Date **05/21/2025**  
By Ishag I. Chank  
Miami-Dade Product Control

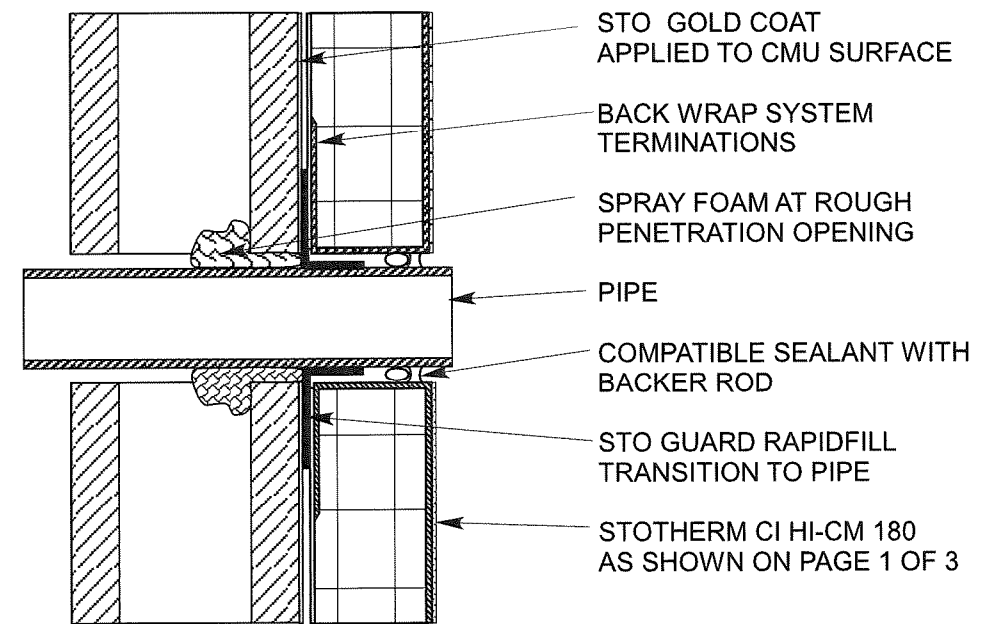
Review by:



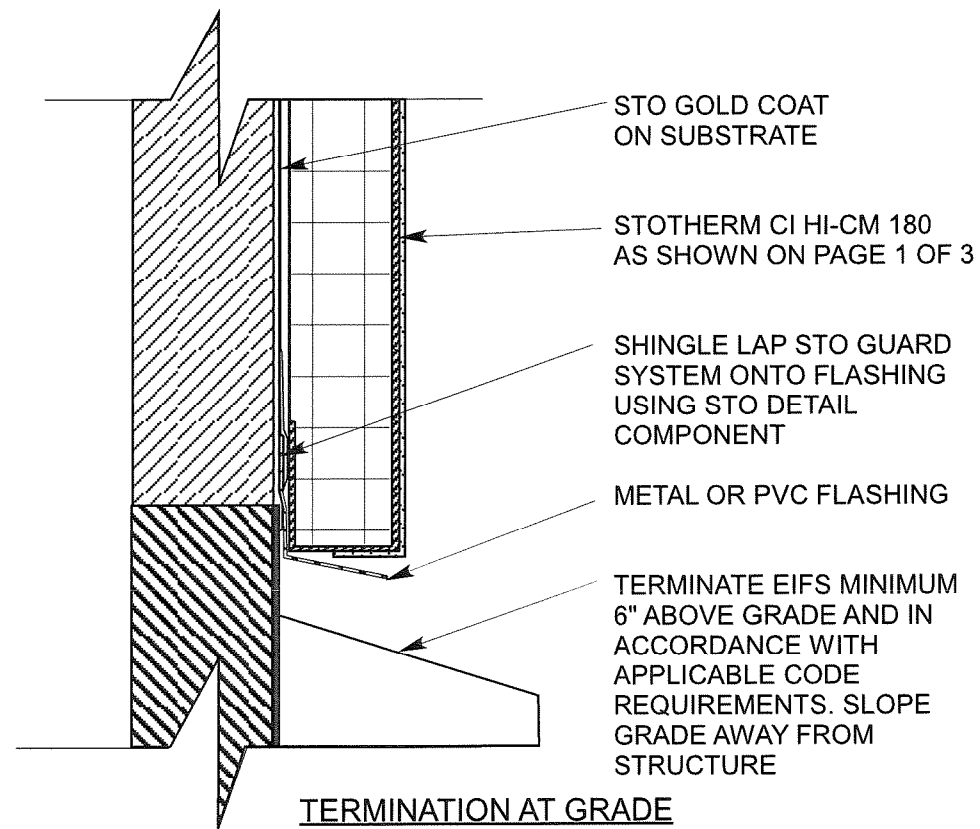
<b>StoTherm ci HI-CM 180</b> Large Missile Impact System Over Concrete Masonry Construction		
Sto Corp. 3800 Camp Creek Pkwy Bldg. 1400, Ste 120 Atlanta, GA 30331		Drawing: HI-CM 180 1 of 3
April 2021	Not to Scale	Drawn by: TLV



**FLOOR LINE SEALANT JOINT**



**PIPE OR MECHANICAL PENETRATION**



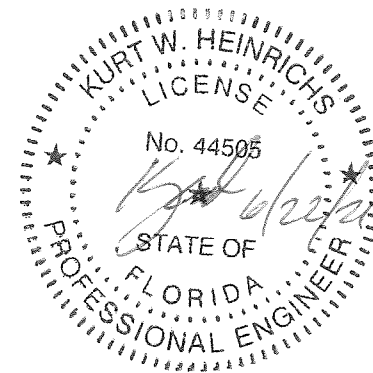
**TERMINATION AT GRADE**

**PRODUCT REVISED**  
 as complying with the Florida  
 Building Code  
 NOA-No. **21-0708.13**

Expiration Date **05/21/2025**

By *Ishag I. Chank*  
 Miami-Dade Product Control

Review by:



**TYPICAL DETAIL SHEET**

**StoTherm ci HI-CM 180**  
 Large Missile Impact System  
 Over Concrete Masonry Construction

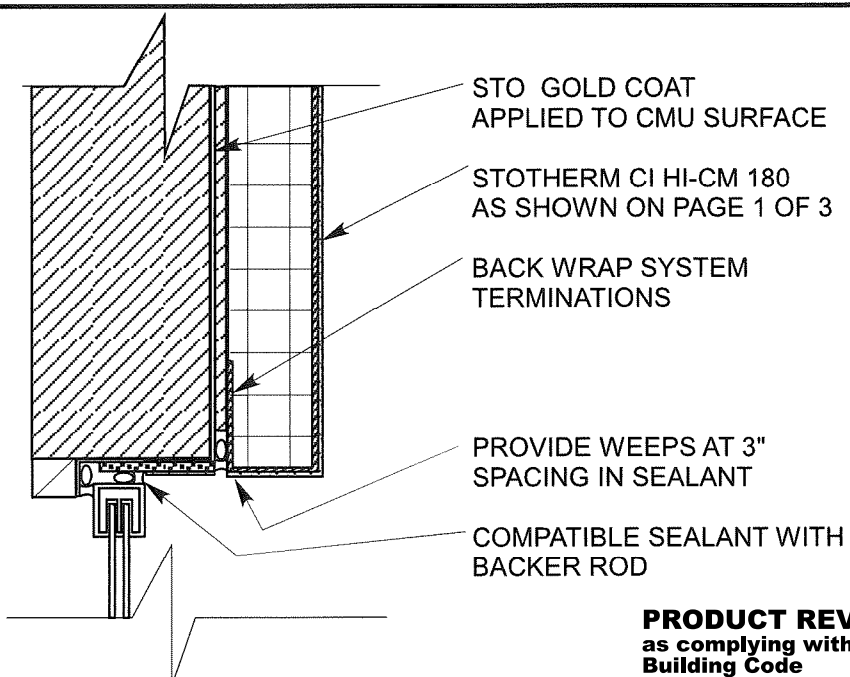
Sto Corp.  
 3800 Camp Creek Pkwy  
 Bldg. 1400, Ste 120  
 Atlanta, GA 30331

Drawing:  
 HI-CM 180  
 2 of 3

April 2021

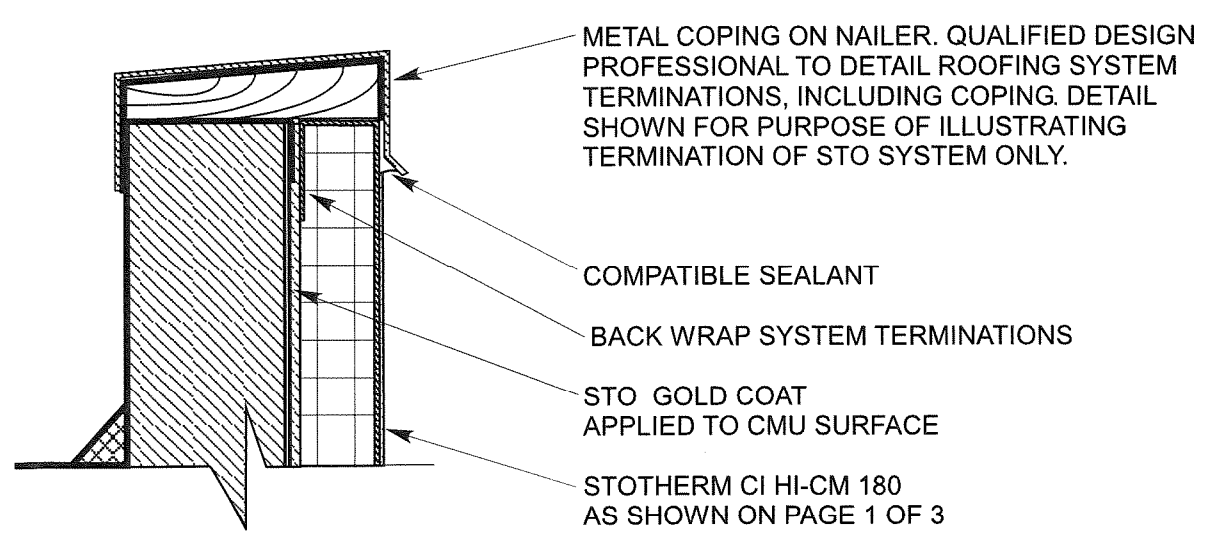
Not to Scale

Drawn by: TLV

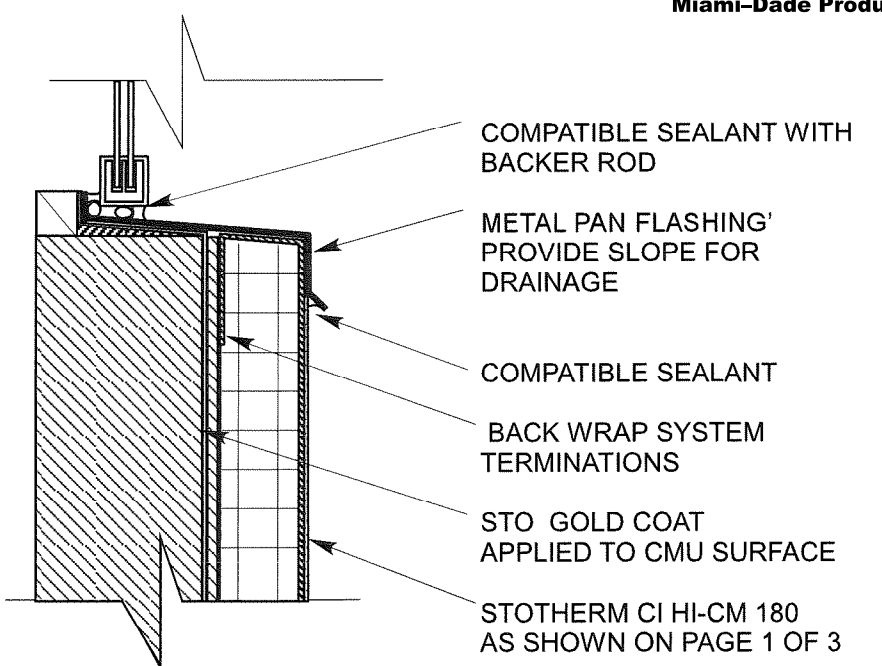


WINDOW HEAD

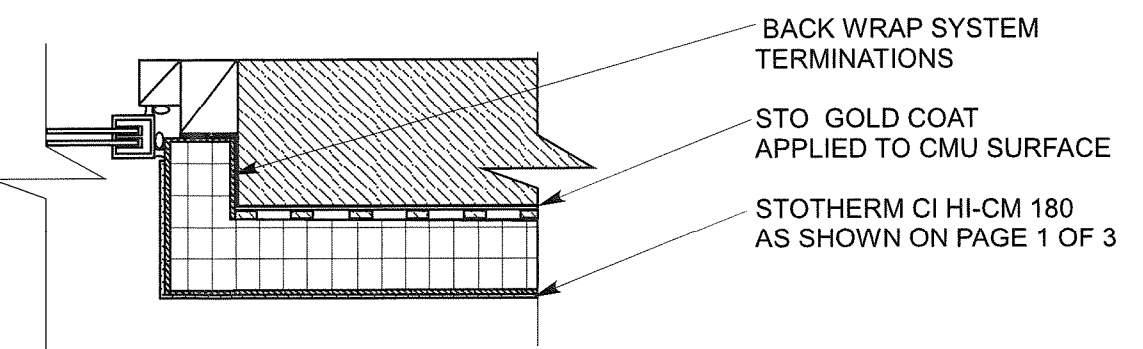
**PRODUCT REVISED**  
 as complying with the Florida Building Code  
 NOA-No. **21-0708.13**  
 Expiration Date **05/21/2025**  
 By *Ishtay I. Chank*  
 Miami-Dade Product Control



PARAPET CAP



WINDOW SILL



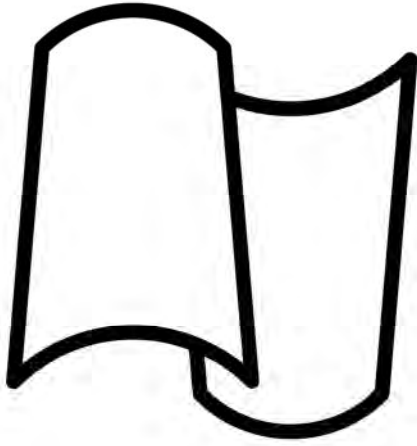
WINDOW JAMB

TYPICAL DETAIL SHEET

Review by:

KURT W. HEINRICHS  
 LICENSE  
 No. 44505  
 STATE OF FLORIDA  
 PROFESSIONAL ENGINEER

<b>StoTherm ci HI-CM 180</b> Large Missile Impact System Over Concrete Masonry Construction		
Sto Corp. 3800 Camp Creek Pkwy Bldg. 1400, Ste 120 Atlanta, GA 30331		Drawing: HI-CM 180 3 of 3
April 2021	Not to Scale	Drawn by: TLV



# Verea

Clay Roof Tile

2023 CATALOG



[www.VereaClayTile.com](http://www.VereaClayTile.com)

# THE VEEVA DIFFERENCE

- ✓ **LIFETIME WARRANTY**  
We offer a lifetime warranty free of charge.
- ✓ **COLOR PERMANENCE**  
Our products are ASTM GRADE 1 and offer unparalleled color permanence and are guaranteed to not discolor or fade over time.
- ✓ **MILDEW RESISTANCE**  
Our tile is known to be very mildew resistant due to our superior clay and our state-of-the-art manufacturing process.
- ✓ **INSULATING**  
Clay tile is an excellent thermal insulator and is a much cooler system than shingle, slate, concrete roof tile, or metal roofing.
- ✓ **DURABILITY**  
Our tile are known to be among the hardest in the industry. Our traverse breaking strength tests results often exceed industry requirements by over 300%.
- ✓ **SUSTAINABILITY**  
Our tiles are natural products made of high grade clay and water, which are inert and harmless to the environment.
- ✓ **LOWEST BREAKAGE**  
Packaging is one of our core competencies and we are well known to have the lowest breakage in the entire roof tile industry.

*Verea Clay Roof Tile combines old-world craftsmanship with twenty-first century technology to bring to market the highest quality and greatest value in roof tile.*

## TABLE OF CONTENTS

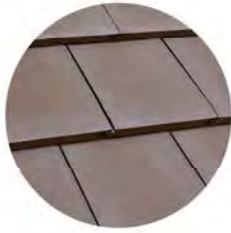
TILE OPTIONS & SPECIFICATIONS .....	3
JACOBEA .....	5
SANTIAGO .....	6
CAPCANA .....	7
AÑEJA .....	8
VINTAGE .....	9
FUME .....	10
GRAPHITE .....	11
BROWN .....	12
MOCHA .....	13
OHIO RED .....	14
RED .....	15
PEACH .....	16
CUSTOM BLENDS .....	17
FLAT TILE .....	19
ACCESSORIES .....	21
MANUFACTURING .....	22

# FLAT ROOF TILE

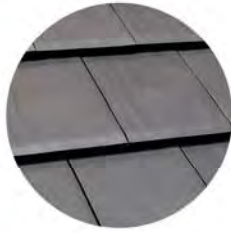
Our interlocking flat tile is a lightweight, Grade 1 roof tile that fits a wide range of architectural styles.



RED



GRAPHITE



SLATE



SLATE TXT



WHITE

INDIVIDUAL COLORS

# CARIBBEAN S ROOF TILE

This alternate S profile is generally used for repairs or additions to roofs done with other manufacturer's tile.



RED

# TILE SPECIFICATIONS

TILE PROFILE	LENGTH	WIDTH	WEIGHT /UNIT	PIECES /PALLET	SQ. /PALLET	WEIGHT /PALLET	TILES /SQUARE	WEIGHT /SQUARE	MIAMI-DADE NOA	FL APPROVAL #
SPANISH S	19.5 in.	11 in.	7.8 lbs.	378	4.3	2,963 lbs.	88 pcs.	686 lbs.	20-0902.02	FL17152-R4
BARREL	19.5 in.	8.25 in.	5.6 lbs.	432	2.8	2,435 lbs.	154 pcs.	862 lbs.	20-0902.03	FL17152-R4
FLAT	15.75 in.	10 in.	6.4 lbs.	344	2.8	2,225 lbs.	123 pcs.	794 lbs.	19-0513.08	FL17152-R4
CARIBBEAN S	18.75 in.	10.75 in.	6.5 lbs.	378	3.9	2,472 lbs.	97 pcs.	630 lbs.	20-0902.01	N/A



## LIFE TIME WARRANTY

All Verea roof tile come with a LIFETIME WARRANTY. Our products offer unparalleled color permanence and are GUARANTEED to not discolor or fade over time. Enjoy the peace of mind of knowing that your roof will maintain the same appearance for the entirety of it's service life.

# FLAT TILE

Our interlocking flat tile is a lightweight, Grade 1 roof tile that fits a wide range of architectural styles.



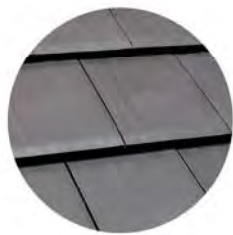




RED



GRAPHITE



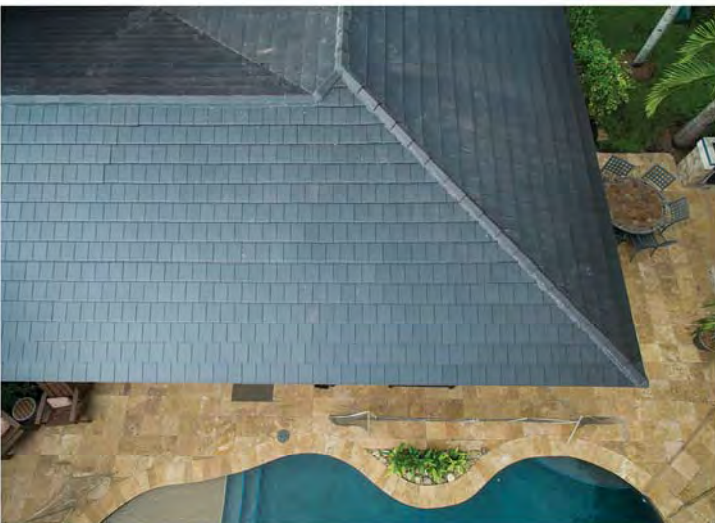
SLATE



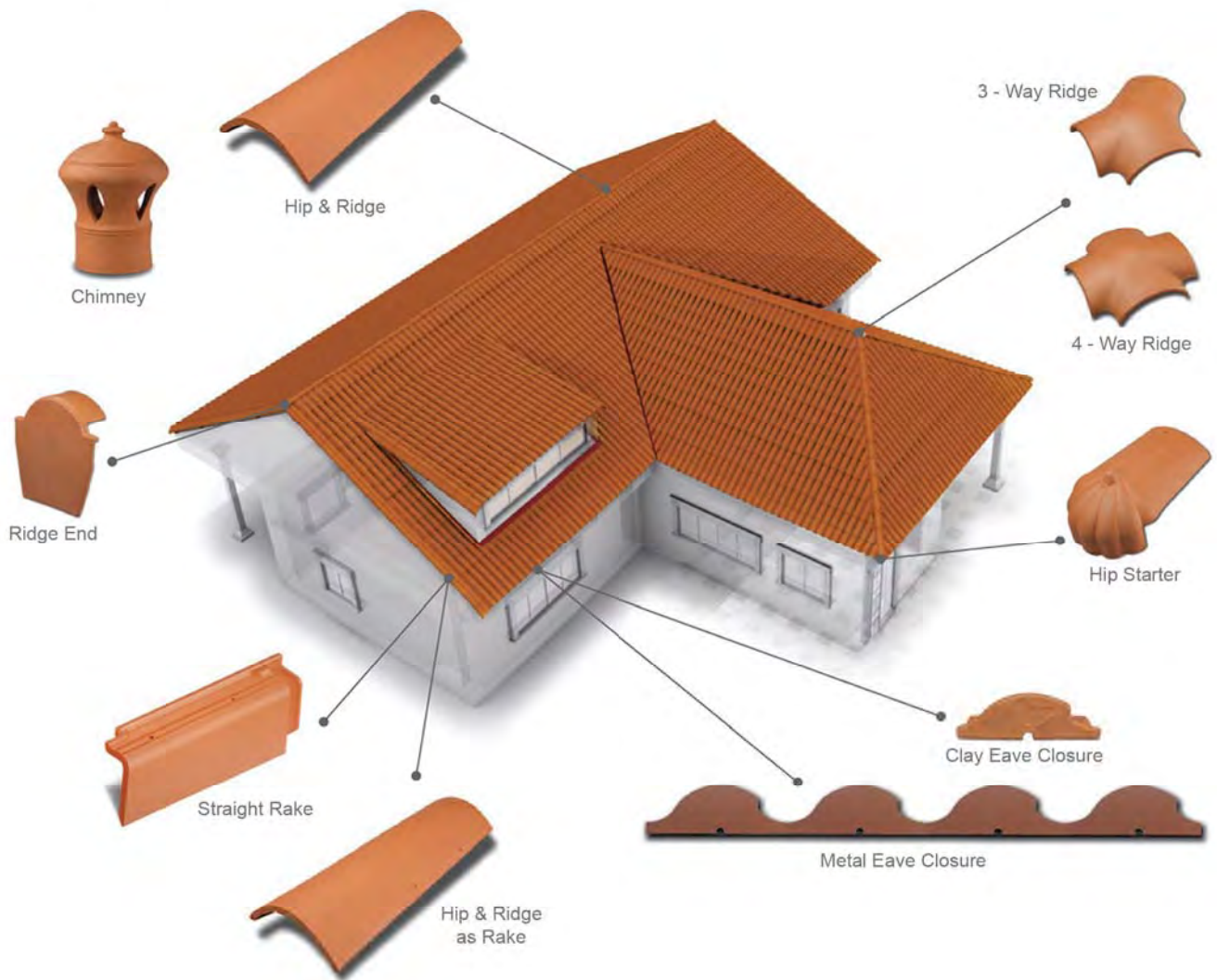
SLATE TEXTURE



WHITE



# ACCESSORIES







TILE PROFILE	MIAMI-DADE NOA	FL APPROVAL #
SPANISH S	22-1202.02	FL17152-R4
BARREL	22-1202.03	FL17152-R4
FLAT	21-0303.01	FL17152-R4
CARIBBEAN S	22-1202.01	N/A



Phone: 786-641-9154  
 Email: [info@vereaclaytile.com](mailto:info@vereaclaytile.com)  
 Website: [www.vereaclaytile.com](http://www.vereaclaytile.com)  
 In Europe: [www.tejasverea.com](http://www.tejasverea.com)

7275 NW 61<sup>st</sup> Street  
 Miami, FL 33166 USA

[www.VereaClayTile.com](http://www.VereaClayTile.com)



DEPARTMENT OF REGULATORY AND ECONOMIC RESOURCES (RER)  
BOARD AND CODE ADMINISTRATION DIVISION

MIAMI-DADE COUNTY  
PRODUCT CONTROL SECTION  
11805 SW 26 Street, Room 208  
Miami, Florida 33175-2474  
T (786) 315-2590 F (786) 315-2599  
[www.miamidade.gov/pera](http://www.miamidade.gov/pera)

**NOTICE OF ACCEPTANCE (NOA)**

**Tejas Vereá S.A.**  
**Lanza S/N 15685**  
**Mesía (Coruña) Spain**

**SCOPE:**

This NOA is being issued under the applicable rules and regulations governing the use of construction materials. The documentation submitted has been reviewed and accepted by Miami-Dade County RER - Product Control Section to be used in Miami Dade County and other areas where allowed by the Authority Having Jurisdiction (AHJ).

This NOA shall not be valid after the expiration date stated below. The Miami-Dade County Product Control Section (In Miami Dade County) and/or the AHJ (in areas other than Miami Dade County) reserve the right to have this product or material tested for quality assurance purposes. If this product or material fails to perform in the accepted manner, the manufacturer will incur the expense of such testing and the AHJ may immediately revoke, modify, or suspend the use of such product or material within their jurisdiction. RER reserves the right to revoke this acceptance, if it is determined by Miami-Dade County Product Control Section that this product or material fails to meet the requirements of the applicable building code.

This product is approved as described herein, and has been designed to comply with the Florida Building Code including the High Velocity Hurricane Zone of the Florida Building Code.

**DESCRIPTION: Vereá Flat Grade 1**

**LABELING:** Each unit shall bear a permanent label with the manufacturer's name or logo, city, state and following statement: "Miami-Dade County Product Control Approved", unless otherwise noted herein.

**RENEWAL** of this NOA shall be considered after a renewal application has been filed and there has been no change in the applicable building code negatively affecting the performance of this product.

**TERMINATION** of this NOA will occur after the expiration date or if there has been a revision or change in the materials, use, and/or manufacture of the product or process. Misuse of this NOA as an endorsement of any product, for sales, advertising or any other purposes shall automatically terminate this NOA. Failure to comply with any section of this NOA shall be cause for termination and removal of NOA.

**ADVERTISEMENT:** The NOA number preceded by the words Miami-Dade County, Florida, and followed by the expiration date may be displayed in advertising literature. If any portion of the NOA is displayed, then it shall be done in its entirety.

**INSPECTION:** A copy of this entire NOA shall be provided to the user by the manufacturer or its distributors and shall be available for inspection at the job site at the request of the Building Official.

This NOA revises NOA# 19-0513.08 and consists of pages 1 through 5.  
The submitted documentation was reviewed by Alex Tigera.



NOA No.: 21-0303.01  
Expiration Date: 04/24/24  
Approval Date: 11/24/21  
Page 1 of 5

## ROOFING ASSEMBLY APPROVAL

**Category:** Roofing  
**Sub Category:** Roofing Tiles  
**Material:** Clay

### 1. SCOPE

This approves a roofing system using **Verea Flat Grade 1** manufactured by **Tejas Verea S.A.** in **La Coruña, Spain** and is distributed by **Ceramica Verea, USA Corp.**, as described in Section 2 of this Notice of Acceptance. For locations where the pressure requirements, as determined by applicable Building Code does not exceed the design pressure values obtained by calculations in compliance with RAS 127 using the values listed in section 4 herein. The attachment calculations shall be done as a moment based system.

### 2. PRODUCT DESCRIPTION

<u>Manufactured by Applicant</u>	<u>Dimensions</u>	<u>Test Specifications</u>	<u>Product Description</u>
Verea Flat Grade 1	L = 15.65” W = 9.96” Thickness: 0.45”	ASTM C1167 Type III Grade 1	Flat profile clay roof tile. For direct deck, adhesive set applications.
Trim Pieces	Length: varies Width: varies varying thickness	ASTM C1167	Accessory trim, clay roof pieces for use at hips, rakes, ridges and valley terminations manufactured for each tile profile.

#### 2.1 MANUFACTURING LOCATION

2.1.1. Mesia (La Coruña) España

#### 2.2 EVIDENCE SUBMITTED

<u>Test Agency</u>	<u>Test Identifier</u>	<u>Test Name/Report</u>	<u>Date</u>
American Test Lab of South Florida	RT1220.01-13	ASTM C 1167	12/30/13
	RT0131.01-14	TAS 101	02/24/14
	RT0116.03-19	ASTM C 1167	01/24/19

### 3. LIMITATIONS:

- 3.1 Fire classification is not part of this acceptance.
- 3.2 For mortar or adhesive set tile applications, a static field uplift test in accordance with TAS 106 may required, refer to applicable building code.
- 3.3 Applicant shall retain the services of a Miami-Dade County Certified Laboratory to perform quarterly test in accordance with TAS 112, appendix ‘A’. Such testing shall be submitted to the Building and Neighborhood Compliance Department – Product Control Section for review.
- 3.4 Minimum underlayment shall be in compliance with the applicable Roofing Applications Standards listed section 4.1 herein.
- 3.5 30/90 hot mopped underlayment applications may be installed perpendicular to the roof slope unless stated otherwise by the underlayment material manufacturers published literature.
- 3.6 This acceptance is for wood deck applications. Minimum deck requirements shall be in compliance with applicable building code.



NOA No.: 21-0303.01  
Expiration Date: 04/24/24  
Approval Date: 11/24/21  
Page 2 of 5

## 4. INSTALLATION

- 4.1 Verea Flat Grade 1 and its components shall be installed in strict compliance with Roofing Application Standard RAS-120.
- 4.2 Data For Attachment Calculations.

Table 1: Average Weight (W) and Dimensions (l x w )			
Tile Profile	Weight-W (lbf)	Length-l (ft)	Width-w (ft)
Verea Flat Grade 1	6.4	1.304	0.83

Table 2: Aerodynamic Multipliers - $\lambda$ (ft <sup>3</sup> )		
Tile Profile	$\lambda$ (ft <sup>3</sup> ) Batten Application	$\lambda$ (ft <sup>3</sup> ) Direct Deck Application
Verea Flat Grade 1	N/A	0.21

Table 3: Restoring Moments due to Gravity - $M_g$ (ft-lbf)						
Tile Profile	2":12"	3":12"	4":12"	5":12"	6":12"	7":12" or Greater
Verea Flat Grade 1	Direct Deck	Direct Deck	Direct Deck	Direct Deck	Direct Deck	Direct Deck
	3.82	3.77	3.71	3.63	3.54	3.44

Table 6: Attachment Resistance Expressed as a Moment - $M_r$ (ft-lbf) for Single Patty Adhesive Set Systems		
Tile Profile	Tile Application	Minimum Attachment Resistance
Verea Flat Grade 1	ICP Adhesives Polyset AH-160	38.71 <sup>1</sup>
<sup>1</sup> Medium paddy placement weight 24.6 grams (approx. 2" x 10" paddy) of ICP Adhesives Polyset AH-160 Adhesive AH-160.		

## 5. LABELING

- 5.1 All tiles shall bear the imprint or identifiable marking of the manufacturer's name or logo as detailed below, or following statement: "Miami-Dade County Product Control Approved".

# verea

**LABEL FOR VEREA FLAT GRADE 1  
(LOCATED ON THE SIDE OF TILE)**



NOA No.: 21-0303.01  
 Expiration Date: 04/24/24  
 Approval Date: 11/24/21  
 Page 3 of 5

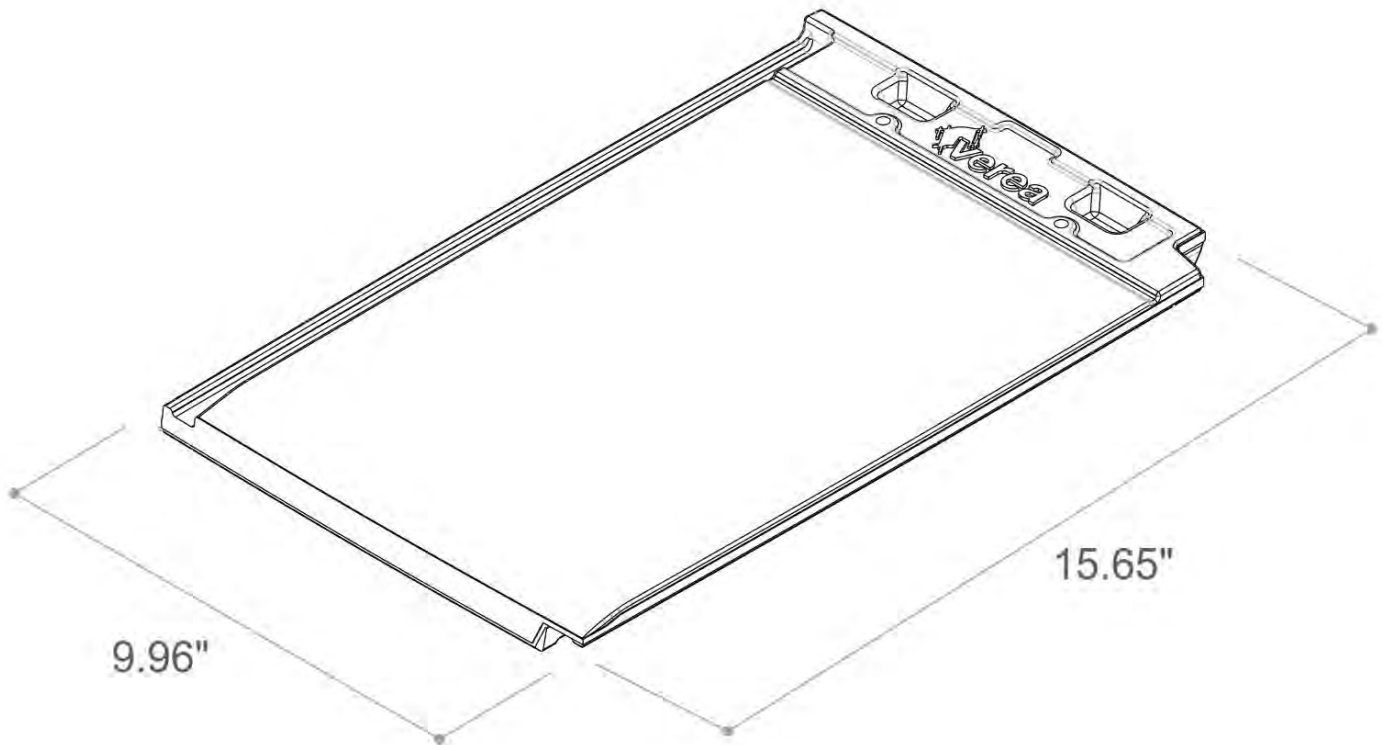
## 6. BUILDING PERMIT REQUIREMENTS:

6.1 Application for building permit shall be accompanied by copies of the following:

6.1.1 This Notice of Acceptance.

6.1.2 Any other documents required by Building Official or Applicable building code in order to properly evaluate the installation of this system.

### PROFILE DRAWING



VEREA FLAT GRADE 1

**END OF THIS ACCEPTANCE**



NOA No.: 21-0303.01  
Expiration Date: 04/24/24  
Approval Date: 11/24/21  
Page 4 of 5



## GREEN SUSTAINABLE ATTRIBUTES (GSA)

**SCOPE:** This document is solely for the purpose of verification of Sustainable Attributes of construction materials. The documentation submitted has been reviewed by Miami-Dade County Product Control Section.

### G.1 - SOLAR REFLECTANCE AND THERMAL EMMITANCE

<u>Component Name</u>	<u>Initial Reflectance</u>	<u>Aged Reflectance</u>	<u>Initial Emittance</u>	<u>Aged Emittance</u>	<u>Solar Reflectance Index (SRI)</u>
1. Verea Flat Grade 1	0.39	Pending	0.83	Pending	41

### G.2 - THERMAL RESISTANCE

<u>R-Value</u>	<u>Insulation / Thickness</u>	<u>Assemblies:</u>
2.09	0.46	Verea Flat Grade 1

### G.3 - LOW VOC COMPONENTS

<u>Component Name</u>	<u>Content</u>	<u>Emission</u>
1. Verea Flat Grade 1	0% COV's	0%

### G.4 - RECYCLED CONTENT / BIO-BASED MATERIAL / RAPIDLY RENEWABLE MATERIAL

<u>Component Name</u>	<u>% Recycled Content at Manuf.</u>	<u>% Recycled at Disposal</u>	<u>% Bio-based Material</u>	<u>% Renewable Material</u>
1. Verea Flat Grade 1	20%			100%

### G.6 - ROOF SYSTEM LIFE CYCLE

<u>Years</u>	<u>Assemblies:</u>
150	Verea Clay Roof Tile Grade 1

### G.7 - REGIONALLY MANUFACTURED COMPONENTS

<u>Component Name</u>	<u>Manufacturing Location</u>
1. Verea Flat Grade 1	Quarry-Cruceiro 22 Frades; quartz extracted in surrounding councils Mesía /Frades (La Coruña) – Spain. Local extraction less than 5 km

