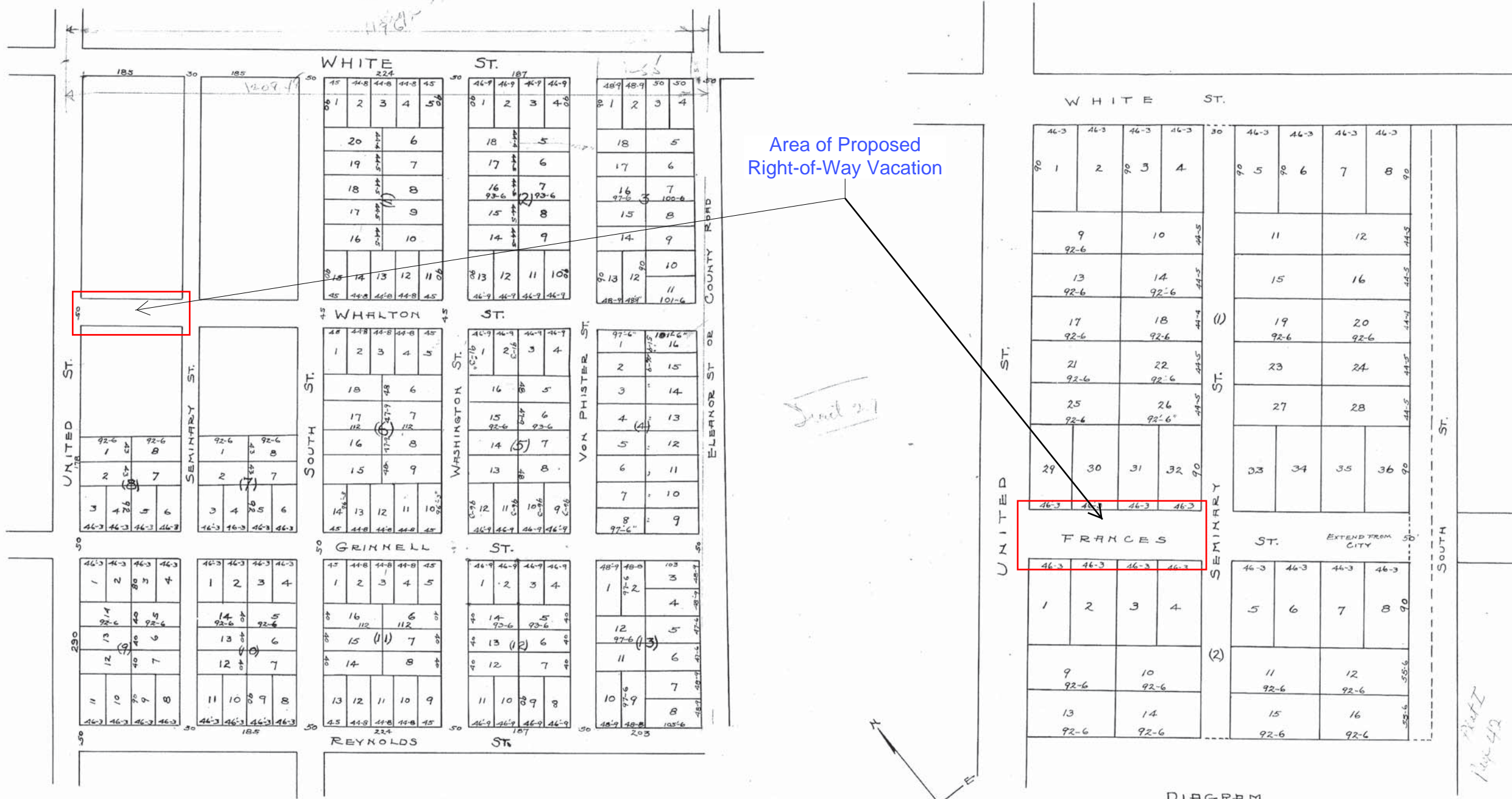


Original 1905 Plat Map of the George W. Nichols / Webb Realty Co. subdivision
 (Whalton Street was formerly known as Frances Street.)



Area of Proposed Right-of-Way Vacation

DIAGRAM OF PART OF TRACT 18
 PLATTED BY THE WEBB REALTY CO.
 JUNE 15th, 1905.
 FILED AND RECORDED JUNE 6, 1905
 E.W. RUSSELL
 CLERK

DIAGRAM
 OF THE
 LAND
 PURCHASED
 BY
 GEORGE W. NICHOLS, ESQ
 FROM
 MRS. VON PFISTER
 PART TRACT 18
 SURVEYED AND PLATTED FROM MAP
 OF C.W. TIFT, CO. SURVEYOR. DATED
 JULY 1874. TRACT LINES SURVEYED ACCORDING
 TO MAP OF W. WHITEHEAD DATED 1829
 KEY WEST, FLA. J.J. ASHE
 NOV 7 1881 CO. SURVEYOR

RECORDED MAR. 7 1905
 E.W. RUSSELL
 CLERK

Part I
 Page 49