



COOPER CARRY

Site D

3820 N. Roosevelt Boulevard
Key West, FL 33040

Key West Hotel Collection

TREES & PALMS TO BE REMOVED

Type	Size	Quantity	Size	Quantity
Palm	8'	2	15'	2
	12'	13	16'	10
	14'	1		
Coconut Palm	22'	1	30'	1
	25'	1	34'	1
	26'	1		
Pine	20'	4	30'	1
	28'	1		
Unknown	8'	1	20'	2
	18'	2	30'	1

TREES & PALMS TO REMAIN IN PLACE

Type	Size	Quantity	Size	Quantity
Palm	10'	2	19'	1
	14'	2	20'	4
	16'	7	24'	3
	18'	12	28'	1
Coconut Palm	18'	3	26'	2
	20'	5	28'	1
	22'	3		
Gumbo Limbo	15'	1	16'	1
Ficus	16'	2		
Unknown	14'	1	20'	1

PROPOSED LANDSCAPE TREE/PALM CALCULATIONS

103 Trees New	97 Trees on Key West Plant List	
78 Palms New	54 Palms on Key West Plant List	
181 New Trees & Palms	151 Trees & Palms on Key West Plant List	83%

Site D

3820 N. Roosevelt Boulevard
Key West, FL 33040

Key West Hotel Collection

PROPOSED PLANT LIST REVISIONS

Sea Grape (*Cocoloba uvifera*) replaced with Dahoon Holly (*Ilex cassine dahoon*)

Loblolly Bay (*Gordonia lasianthus*) removed

Yaupon Holly (*Ilex vomitoria*) replaced with Florida Slash Pine (*Pinus elliottii 'densa'*)

Live Oak (*Quercus virginiana*) replaced with Buttonwood (*Conocarpus erectus*)

Coconut Palm (*Cocos nucifera*) replaced with Florida Royal Palm (*Roystonea elata*)



COOPER CARRY

ATLANTA WASHINGTON NEW YORK NEWPORT BEACH

© Copyright Cooper Carry 2013

SCOPE DOCUMENTS

The Construction Documents have not been completed therefore this drawing may be incomplete or not coordinated. The documents issued indicate the general scope of the Project. The Contractor is responsible for complete and coordinated pricing and Work, and shall include all items necessary for the proper execution and completion of the Project, whether indicated or not. All components of the Project shall comply with any and all requirements of national, state, and local codes. The Contractor shall inform the Owner and Architect of any omissions, inconsistencies or errors in the information provided. If no notice is given and any omissions, inconsistencies or errors are discovered, the Architect's decisions on items of Work included in the scope shall be binding on the Contractor, when consistent with the general scope and quality of the Project.

ISSUANCES

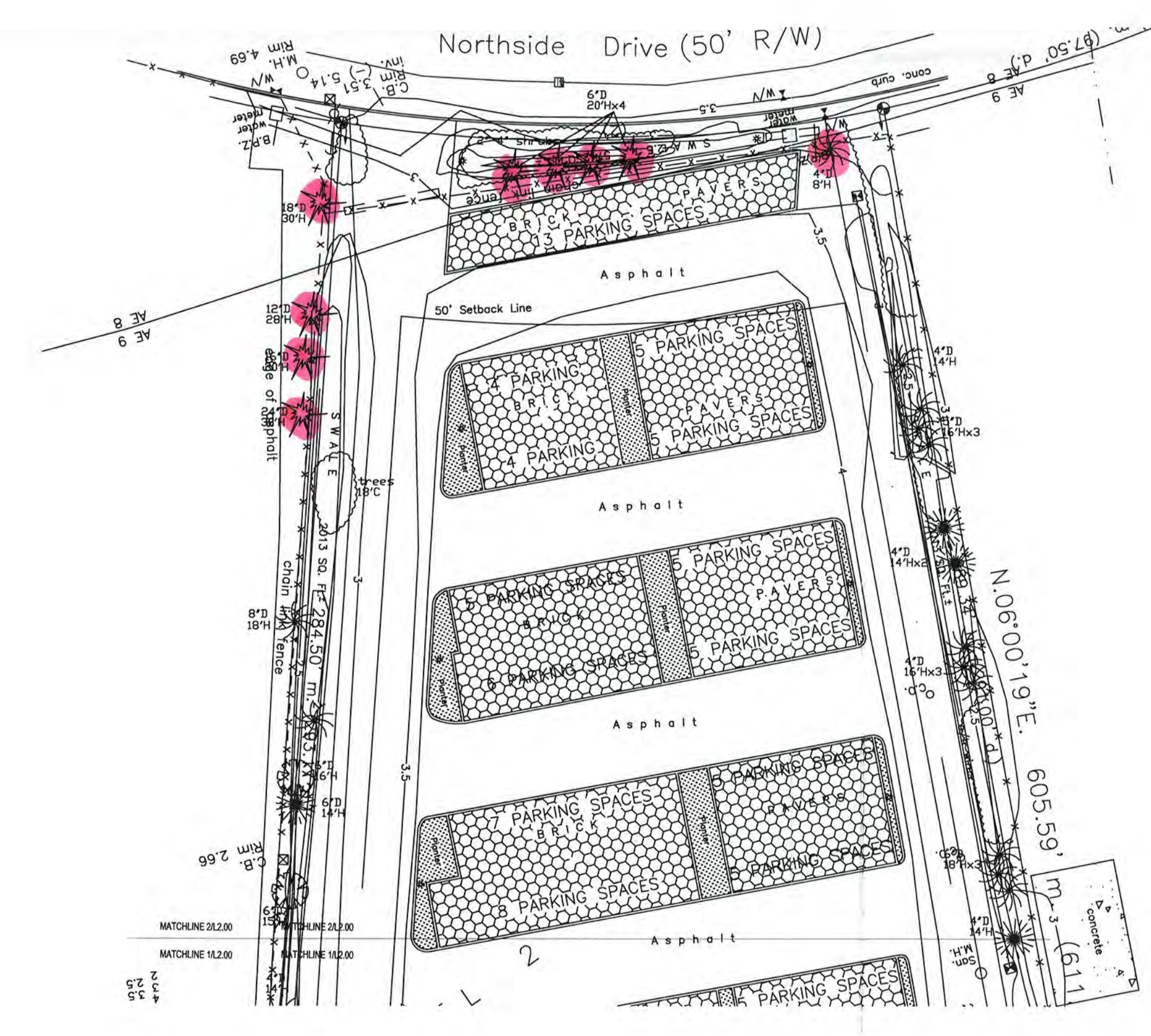
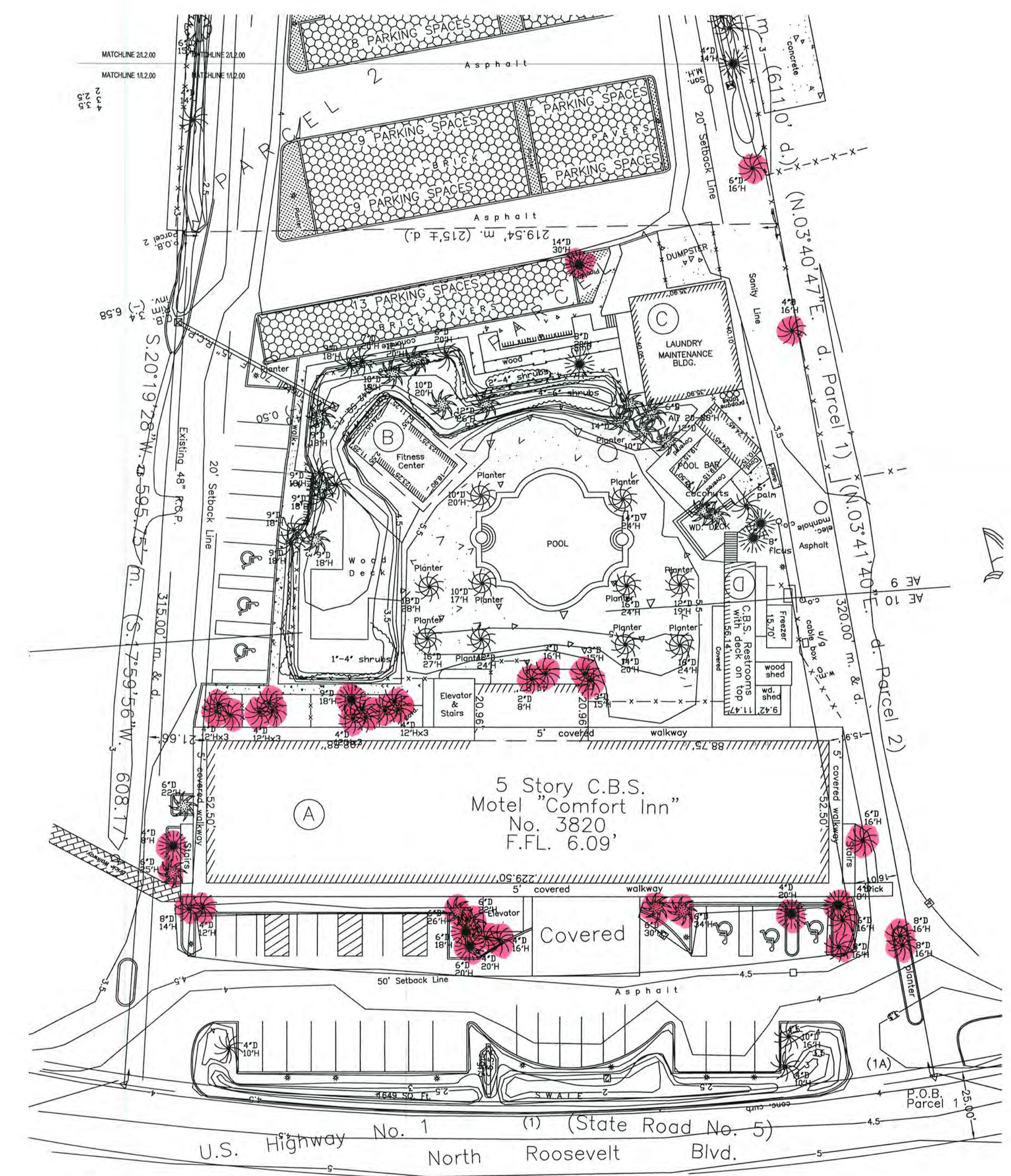
No.	Drawing Issue Description	Date
	DEVELOPMENT PLAN	02/01/2013
	TREE PERMIT APPLICATION	02/20/2013

EXISTING TREE LEGEND

- D = Diameter of tree.
- H = Height of tree
- = Palm
- = Almond
- = Buttonwood
- = Tree, Unknown
- = Coconut
- = Pine
- = Gumbo Limbo
- = Umbrella
- = Ficus
- = Papaya
- = Rubber
- = Hong Kong Tulip
- = Seagrape

NOTE: SURVEY DONE BY OTHERS. ALL INVASIVE EXOTIC PLANTS TO BE REMOVED.

EXISTING TREE TO BE REMOVED



PROJECT NUMBER: 20120295 PROJECT NAME: KEY WEST HOTEL COLLECTION - HAMPTON INN & SUITES - (SITE D)
SHEET NUMBER: AX-XX - UNNAMED
M:\2012\20120295\ax-7 drawings\ax-7-1 rev\users\20120295_2011_hampton_peter.rvt
1/29/2013 11:12:51 AM

1 EXISTING SITE PLAN
L2.00 SCALE: 1" = 30'-0"

2 EXISTING SITE PLAN PARKING
L2.00 SCALE: 1" = 30'-0"



KEY WEST HOTEL COLLECTION - HAMPTON INN & SUITES - (SITE D)

3820 North Roosevelt Boulevard
Key West, Florida 33040

J.L. Woode Ltd.

EXISTING SITE PLAN

BOB NEAL Principal-in-Charge	20120295 Project No.
MANNY DOMINGUEZ Design Director	02/01/2013 Date
ANDRES RUBIO Project Manager	
T.JACK BAGBY Project Architect	

L2.00

ISSUED FOR TREE PERMIT APPLICATION ONLY



COOPER CARRY

ATLANTA WASHINGTON NEW YORK NEWPORT BEACH

© Copyright Cooper Carry 2013

SCOPE DOCUMENTS

The Construction Documents have not been completed therefore this drawing may be incomplete or not coordinated. The documents issued indicate the general scope of the Project. The Contractor is responsible for complete and coordinated pricing and Work, and shall include all items necessary for the proper execution and completion of the Project, whether indicated or not. All components of the Project shall comply with any and all requirements of national, state, and local codes. The Contractor shall inform the Owner and Architect of any omissions, inconsistencies or errors in the information provided. If no notice is given and any omissions, inconsistencies or errors are discovered, the Architect's decisions on items of Work included in the scope shall be binding on the Contractor, when consistent with the general scope and quality of the Project.

ISSUANCES

No.	Drawing Issue Description	Date
	DEVELOPMENT PLAN	02/01/2013
	TREE PERMIT APPLICATION	02/20/2013

KEY WEST HOTEL COLLECTION - HAMPTON INN & SUITES - (SITE D)

3820 North Roosevelt Boulevard
Key West, Florida 33040

J.L. Woode Ltd.

CONCEPTUAL LANDSCAPE PLAN

BOB NEAL	20120295
Principal-in-Charge	Project No.
MANNY DOMINGUEZ	02/01/2013
Design Director	Date
ANDRES RUBIO	
Project Manager	
T.JACK BAGBY	
Project Architect	

L1.00

ISSUED FOR TREE PERMIT APPLICATION ONLY

EXISTING TREE LEGEND.

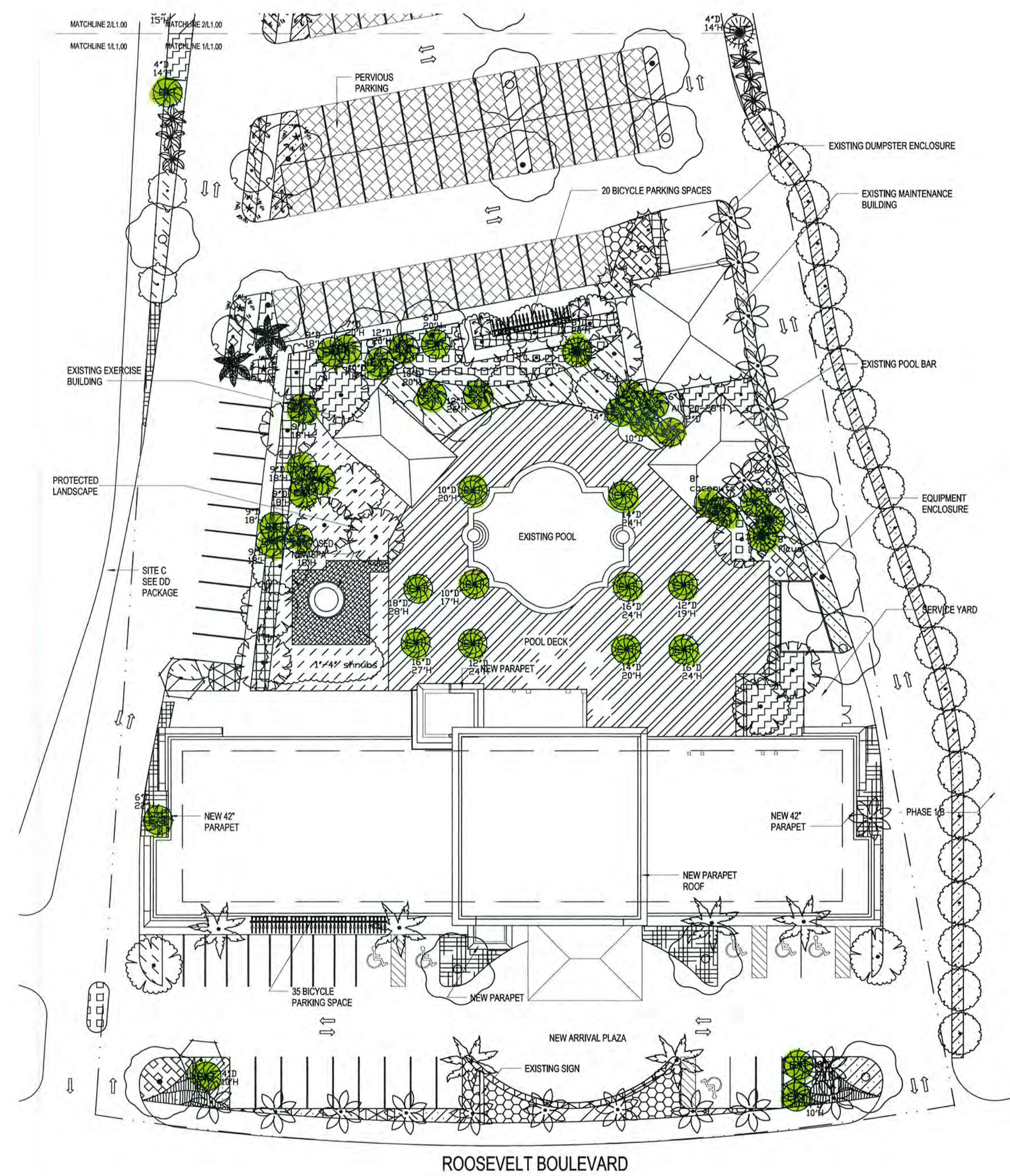
- 6"D = Diameter of tree.
- 12"C = Canopy diameter of tree.
- = Palm
- = Almond
- = Buttonwood
- = Tree, Unknown
- = Coconut
- = Pine
- = Gumbo Limbo
- = Umbrella
- = Ficus
- = Papaya
- = Rubber
- = Hong Kong Tulp
- = Seagrape

EXISTING TREE TO REMAIN

TREE	QTY	BOTANICAL NAME	COMMON NAME	TYPE	SIZE
10	1	BURSERIA SPINOSA	GUMBO LIMBO	SAB OR FG	3" CAL
30	1	ILEX CASPINE	DAPHNODIUM	2.5' H	15'-12" HT
3	1	CORDEX TREBISTENA	ORANGE CEDAR TREE	SAB OR FG	8'-12" HT
18	1	EXISTING TREE TO REMAIN	NA	VARIES	
10	1	CORDON ROSEUM	LYCONEY BAY	SAB OR FG	2.5' H
10	1	PAVUS ELLIOTTI	DENSEA SLASH PINE	SAB OR FG	8'-12" HT
2	1	MADROLA VIRGAWAN	SWEET BAY	SAB OR FG	15'-12" HT
15	1	SCUTELLARIA	LYTICALWOODS	SAB OR FG	3" CAL
8	1	SHAWCERIA GLAUCA	PARADISE TREE	SAB OR FG	8'-12" HT
10	1	SWETENA MANSONI	WEST INDIAN MANICAWAY	SAB OR FG	14'-16" HT
1	1	ODONDA ALBERTA	DOGWOOD PALM	FG	12'-0" H
2	1	PHOENIX DACTYLIFERA MEDIOX	DATE PALM	FG	10' CT
2	1	PHOENIX DACTYLIFERA	FLORIDA ROYAL PALM	FG	14' CT
9	1	SABAL PALMETTO	CABBAGE PALMETTO	FG	10' CT
9	1	SABAL PALMETTO	CABBAGE PALMETTO	FG	12' CT
9	1	SABAL PALMETTO	CABBAGE PALMETTO	FG	14' CT
10	1	DIAGLUS ROMANOFFIANA SILVER QUEEN	SILVER QUEEN PALM	8.8.8	10'-12" HT
12	1	WODNETIA SPURGATA	FORTAL PALM	FG	10' CT
202	1	BLECHNUM BERRILLATUM	SWAMP FERN	3.5' @ 3' @ 0' 0'	
202	1	CHRYSOBLANUS KOCO	COCO PALM	3.5' @ 3' @ 0' 0'	
300	1	HOVA COCCINEA	RED BONA	3.5' @ 3' @ 0' 0'	
216	1	NEPHELEPS BISSERRATA	GIANT SWAMP FERN	3.5' @ 3' @ 0' 0'	
24	1	PODOCARPUS MACROPHYLLUS	YEW PINE	8' HT @ 12' 0' 0'	
30	1	PSYCHOTRIA NERVOISA	WILD COFFEE	3.5' @ 3' @ 0' 0'	
1,323	1	BOHAEFFERIA FRUTESCENS	FLORIDA BOKWOOD	1.5' @ 12' 0' 0'	
108	1	SEEDONIA REFINE	SAB PALMETTO	3.5' @ 3' @ 0' 0'	
608	1	SHOLA FANCIOLATA	SEA OATS	3.5' @ 3' @ 0' 0'	
73	1	ZANNA FLUPURANCEA	CARDIGATE PALM	3.5' @ 3' @ 0' 0'	
383	1	ZANNA PAMLA	COONITE	3.5' @ 3' @ 0' 0'	
1,989	1	BLECHNUM BERRILLATUM	SWAMP FERN	1.5' @ 12' 0' 0'	
1,985	1	CRIBUM AMERICANUM	SEVEN SISTERS	1.5' @ 12' 0' 0'	
2,884 SF	1	STENOCTAPHYRUM RECOMBATUM	ST. AUGUSTINE GRASS	500	
143	1	FRANCOGASTRIA CHENSIS MISS. LOWMEY	SPIDERWORT	1.5' @ 12' 0' 0'	

TREE PERMIT APPLICATION NOTES
 PALMS TO BE REPLACED: 33
 NATIVE PALMS PLANTED: 33⁵⁴
 NON NATIVE PALMS TO BE PLANTED: 45²⁵
 CANOPY TREES TO BE REPLACED: 16¹²
 NATIVE CANOPY TREES TO BE PLANTED: 13²⁹
 NON NATIVE CANOPY TREES TO BE PLANTED: 8⁶
 EXISTING TREES TO REMAIN ON SITE: 58⁵²

NOTE:
ALL TREES AND PALMS TO BE FLORIDA GRADE #1



PROJECT NUMBER: 20120295 PROJECT NAME: KEY WEST HOTEL COLLECTION - HAMPTON INN & SUITES - (SITE D)
 SHEET NUMBER: L1.00 UNNAMED
 FILE: 20120295\47_drawing\47-1_rev\users\20120295_2011_hampton_peter.rvt
 1/29/2013 11:12:51 AM

1 LANDSCAPE PLAN
SCALE: 1" = 30'-0"



2 LANDSCAPE PLAN PARKING
SCALE: 1" = 30'-0"