

STAFF REPORT

DATE: May 2, 2024

RE: **500-899 South Street & 1300-1399 Reynolds Street**
(permit application # T2024-0130)

FROM: Karen DeMaria, City of Key West Urban Forestry Manager

An application was received from the City engineering department regarding the proposed redesign of South Street to improve pedestrian and bicyclist transportation. A review of the trees and palms along the route identified that 1-Royal Poinciana tree should be removed along with 1-not regulated Black Olive tree and one young, not regulated white indigo berry tree. Palms proposed to be removed include (16) Coconut Palms, (10) Christmas Palms, and (2) Queen Palms. Five Thatch Palms will be transplanted off site.

Tree Species: Royal Poinciana (Delonix regia)











04/18/2024



04/18/2024







04/18/2024



04/18/2024



Diameter: 25.1"

Location: 70% (very visible tree, canopy in utility lines.)

Species: 100% (on protected tree list)

Condition: 50% (overall condition is fair to poor-growth lean toward sidewalk, many decay areas at old cuts and breaks in canopy branches and trunks.)

Total Average Value = 73%

Value x Diameter = 18.3 replacement caliper inches



704

04/18/2024

Application



Tree Permit Application

Please Clearly Print All Information unless indicated otherwise. Date: 04/15/2024

Tree Address 500-899 South St and 1300-1399 Reynolds St

Cross/Corner Street

List Tree Name(s) and Quantity Please see attached

Reason(s) for Application: South Street roadwork

Remove Tree Health Safety Other/Explain below

Transplant New Location Same Property Other/Explain below

Heavy Maintenance Trim Branch Removal Crown Cleaning/Thinning Crown Reduction

Additional Information and Explanation South St is being redesigned to improve pedestrian and bicyclist transportation. 50 Tree wells are included in the design to facilitate city canopy while minimizing impacts to sidewalks and roadways.

Property Owner Name City of Key West

Property Owner email Address citymanager@cityofkeywest-fl.gov

Property Owner Mailing Address 1300 White St, Key West, FL 33040

Property Owner Phone Number 305-809-3944

Property Owner Signature

***Representative Name** Ryan Stachurski, Multimodal Coordinator, Engineering

Representative email Address multimodal@cityofkeywest-fl.gov

Representative Mailing Address 1300 White St, Key West, FL 33040

Representative Phone Number 305-809-3867

*NOTE: A Tree Representation Authorization form must accompany this application if someone other than the owner will be representing the owner at a Tree Commission meeting or picking up an issued Tree Permit.

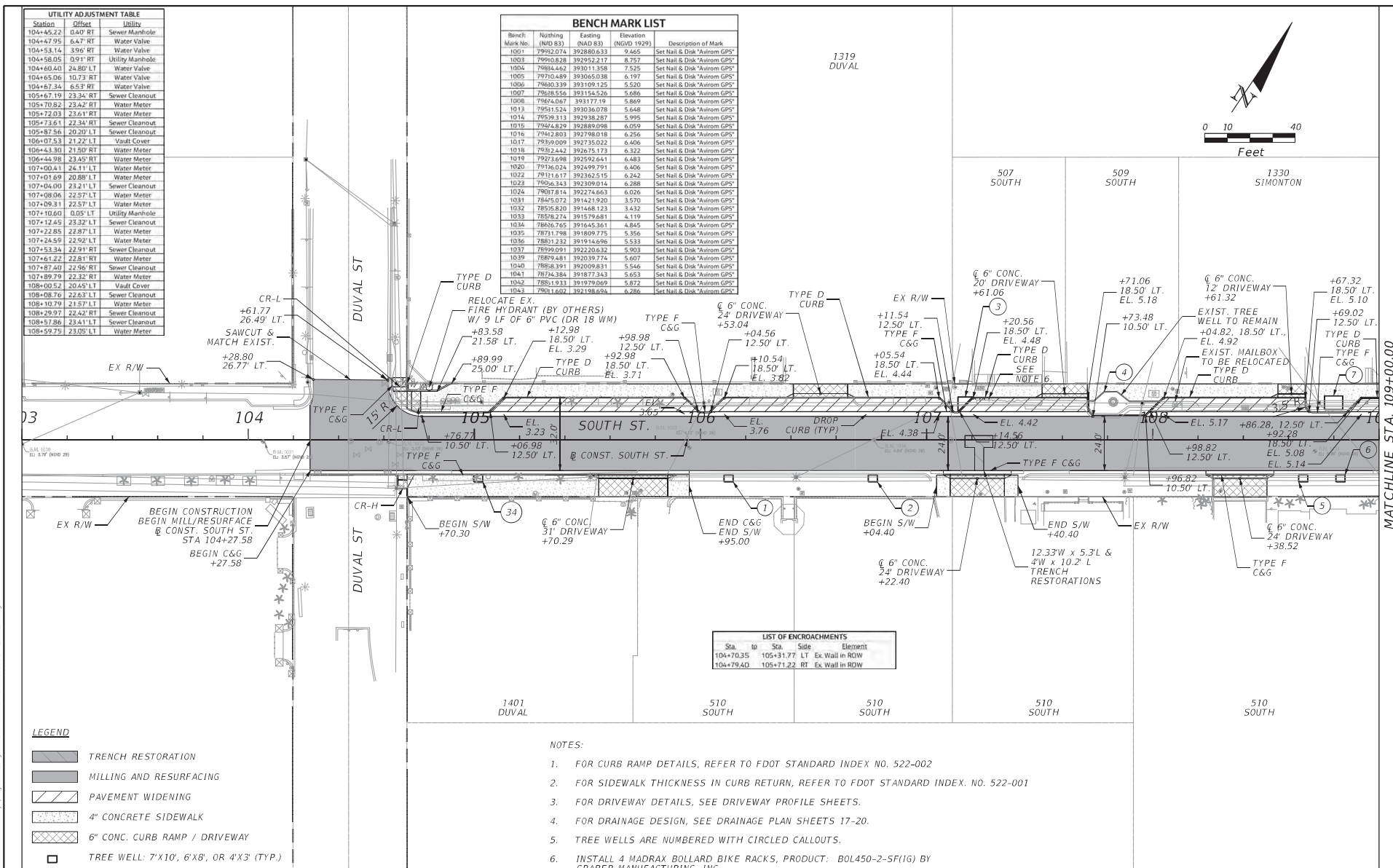
Reviewed for Legal Sufficiency
4/16/24
Rishad Ramsingh, City Attorney

As of August 1, 2022, application fees are required. See back of application for fee amounts.


Sketch location of tree (aerial view) including cross/corner street. Please identify tree(s) on the property regarding this application with colored tape or ribbon.

Please See Attached

10/22/2024 10:22:35 AM Karen E. Falkenberg, P.E. at jacobson.com
 C:\Users\KFA\OneDrive\appdata\local\temp\projectwise\jacobs-america-01\dms89931\PLANR01.dwg



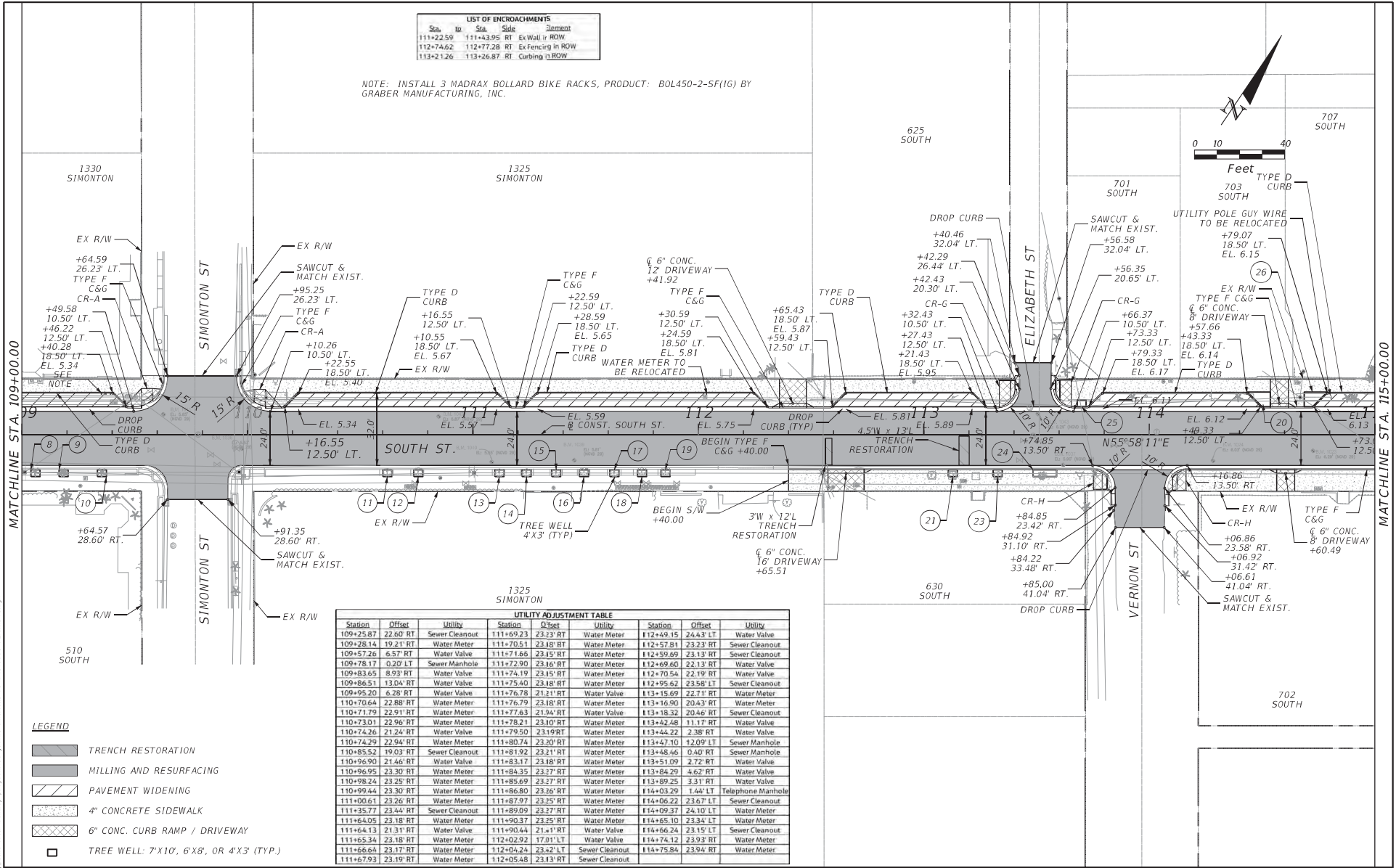
DATE	DESCRIPTION	DATE	DESCRIPTION

KAREN E. FALKENBERG, P.E. P.E. LICENSE NUMBER 54015 JACOBS ENGINEERING GROUP, INC. 200 W. FORSYTH ST, STE 1520 JACKSONVILLE, FL 32202		TASK ORDER 9-22 PROJECT: SOUTH STREET IMPROVEMENTS	ROADWAY PLAN (1) SHEET NO. 11
---------------------------------------------------------------------------------------------------------------------------------------------------	---------------------------------------------------------------------------------------	----------------------------------------------------------------------------	-------------------------------------------------------

MATCHLINE STA. 109+00.00
 THE OFFICIAL RECORD OF THIS SHEET IS THE ELECTRONIC FILE DIGITALLY SIGNED AND SEALED UNDER RULE 61G15-23.004, F.A.C.

Sta.	To	Sta.	Side	Element
111+22.59	111+43.95	RT		Ex Wall Ir ROW
112+74.62	112+77.28	RT		Ex Fencing Ir ROW
113+21.26	113+26.87	RT		Curbing Ir ROW

NOTE: INSTALL 3 MADRAX BOLLARD BIKE RACKS, PRODUCT: BOL450-2-5F(1G) BY GRABER MANUFACTURING, INC.



Station	Offset	Utility	Station	Offset	Utility	Station	Offset	Utility
109+25.87	22.60 RT	Sewer Cleanout	111+69.23	23.23 RT	Water Meter	112+49.15	24.43 LT	Water Valve
109+28.14	19.21 RT	Water Meter	111+70.51	23.18 RT	Water Meter	112+57.81	23.29 RT	Sewer Cleanout
109+57.26	6.57 RT	Water Valve	111+71.66	23.45 RT	Water Meter	112+59.69	23.13 RT	Sewer Cleanout
109+78.17	0.20 LT	Sewer Manhole	111+72.90	23.16 RT	Water Meter	112+69.60	22.13 RT	Water Valve
109+83.65	8.93 RT	Water Valve	111+74.19	23.15 RT	Water Meter	112+70.54	22.19 RT	Water Valve
109+86.51	13.04 RT	Water Valve	111+75.40	23.18 RT	Water Meter	112+95.62	23.58 LT	Sewer Cleanout
109+95.20	6.28 RT	Water Valve	111+76.78	23.11 RT	Water Valve	113+15.69	22.71 RT	Water Meter
110+70.64	22.88 RT	Water Meter	111+76.79	23.18 RT	Water Meter	113+16.90	20.43 RT	Water Meter
110+71.79	22.91 RT	Water Meter	111+77.63	23.04 RT	Water Valve	113+18.32	20.46 RT	Sewer Cleanout
110+73.01	22.96 RT	Water Meter	111+78.21	23.10 RT	Water Meter	113+42.48	11.17 RT	Water Valve
110+74.26	21.24 RT	Water Valve	111+79.50	23.19 RT	Water Meter	113+44.22	2.38 RT	Water Valve
110+74.29	22.94 RT	Water Meter	111+80.74	23.20 RT	Water Meter	113+47.10	12.09 LT	Sewer Manhole
110+85.52	19.03 RT	Sewer Cleanout	111+81.92	23.21 RT	Water Meter	113+48.46	0.40 RT	Sewer Manhole
110+95.90	21.46 RT	Water Valve	111+83.17	23.25 RT	Water Meter	113+51.09	2.72 RT	Water Valve
110+96.95	23.30 RT	Water Meter	111+84.35	23.37 RT	Water Meter	113+84.29	4.62 RT	Water Valve
110+98.24	23.25 RT	Water Meter	111+85.69	23.37 RT	Water Meter	113+89.25	3.31 RT	Water Valve
110+99.44	23.30 RT	Water Meter	111+86.80	23.26 RT	Water Meter	114+03.29	1.44 LT	Telephone Manhole
111+00.61	23.26 RT	Water Meter	111+87.97	23.25 RT	Water Meter	114+06.22	2.67 RT	Sewer Cleanout
111+35.77	23.44 RT	Sewer Cleanout	111+89.09	23.37 RT	Water Meter	114+09.37	24.10 LT	Water Meter
111+64.05	23.18 RT	Water Meter	111+90.37	23.25 RT	Water Meter	114+65.10	23.34 LT	Water Meter
111+64.13	23.11 RT	Water Valve	111+90.44	21.11 RT	Water Valve	114+66.24	23.15 LT	Sewer Cleanout
111+65.34	23.18 RT	Water Meter	112+02.92	17.01 LT	Water Valve	114+74.12	23.93 RT	Water Meter
111+66.64	23.17 RT	Water Meter	112+04.24	23.42 LT	Sewer Cleanout	114+75.84	23.94 RT	Water Meter
111+67.93	23.19 RT	Water Meter	112+05.48	23.13 RT	Sewer Cleanout			

- LEGEND**
- TRENCH RESTORATION
 - MILLING AND RESURFACING
 - PAVEMENT WIDENING
 - 4" CONCRETE SIDEWALK
 - 6" CONC. CURB RAMP / DRIVEWAY
 - TREE WELL: 7'X10', 6'X8', OR 4'X3' (TYP)

REVISIONS			
DATE	DESCRIPTION	DATE	DESCRIPTION

KAREN E. FALKENBERY, P.E.
 P.E. LICENSE NUMBER 54015
 JACOBS ENGINEERING GROUP, INC.
 200 W. FORSYTH ST., STE 1520
 JACKSONVILLE, FL 32202



TASK ORDER 9-22
 PROJECT:
 SOUTH STREET IMPROVEMENTS

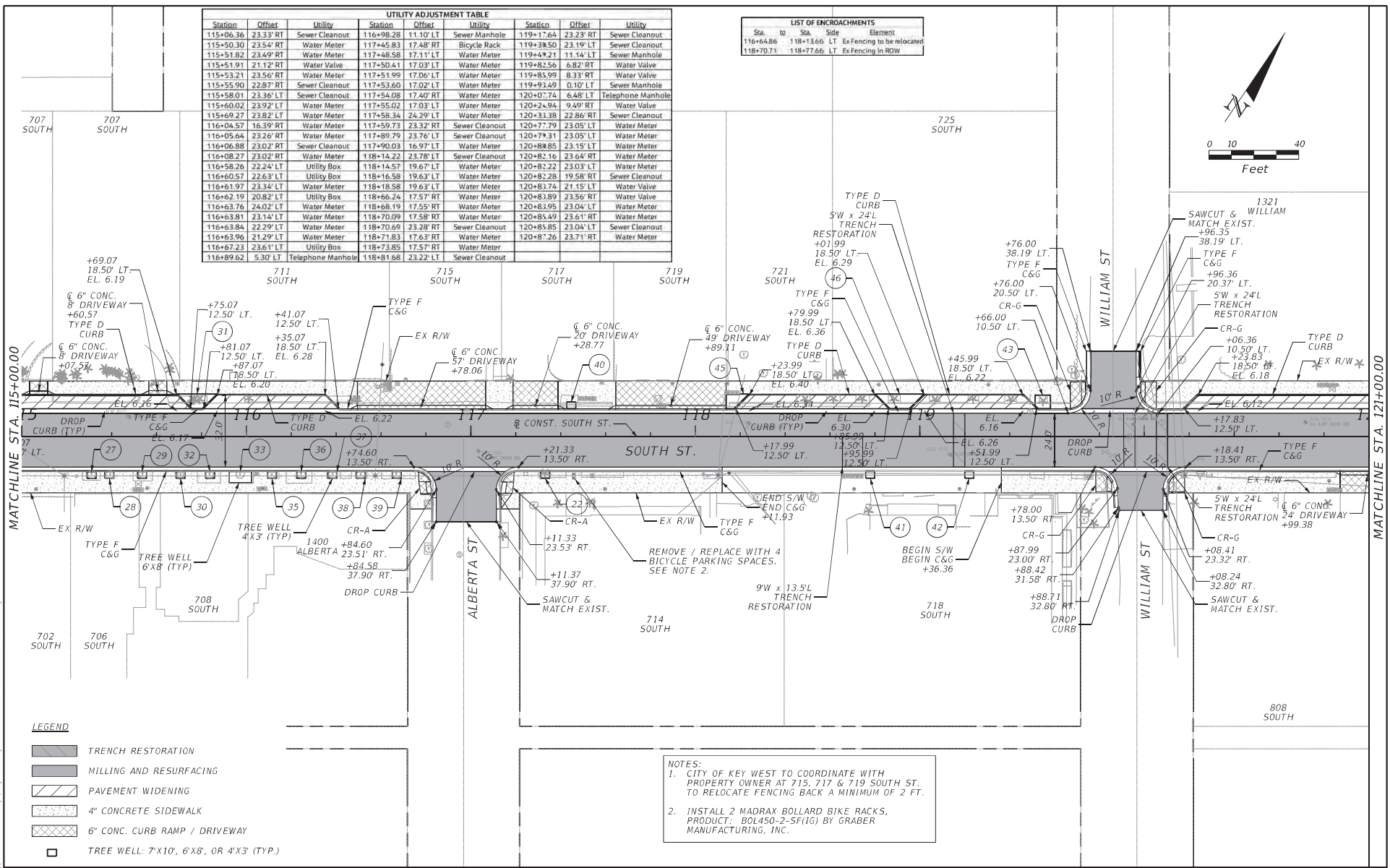
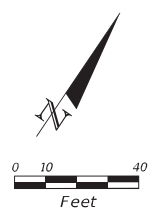
ROADWAY PLAN (2)
 SHEET NO. 12

10/22/2024 AM Karen.Falkenberg@jacobs.com
 c:\Users\ktalkenb\appdata\local\temp\projectwise\jacobs-americas-01\dms89931\PLANRD01.dgn

THE OFFICIAL RECORD OF THIS SHEET IS THE ELECTRONIC FILE DIGITALLY SIGNED AND SEALED UNDER RULE 61G15-23.004, F.A.C.

UTILITY ADJUSTMENT TABLE					
Station	Offset	Utility	Station	Offset	Utility
115+06.36	23.33 RT	Sewer Cleanout	116+98.28	11.10 LT	Sewer Manhole
115+50.30	23.34 RT	Water Meter	117+45.83	17.48 RT	Bicycle Rack
115+51.82	23.49 RT	Water Meter	117+48.58	17.11 LT	Water Meter
115+51.91	21.12 RT	Water Valve	117+50.41	17.03 LT	Water Meter
115+53.21	23.56 RT	Water Meter	117+51.99	17.06 LT	Water Meter
115+55.90	22.87 RT	Sewer Cleanout	117+53.60	17.02 LT	Water Meter
115+58.01	23.36 LT	Sewer Cleanout	117+54.08	17.40 RT	Water Meter
115+60.02	23.92 LT	Water Meter	117+55.02	17.03 LT	Water Meter
115+69.27	23.82 LT	Water Meter	117+58.34	24.29 LT	Water Meter
116+04.57	16.39 RT	Water Meter	117+59.73	23.32 RT	Sewer Cleanout
116+05.64	23.26 RT	Water Meter	117+89.79	23.76 LT	Sewer Cleanout
116+06.88	23.02 RT	Sewer Cleanout	117+90.03	16.97 LT	Water Meter
116+08.27	23.02 RT	Water Meter	118+14.22	23.78 LT	Sewer Cleanout
116+58.26	22.24 LT	Utility Box	118+14.57	19.67 LT	Water Meter
116+60.57	22.63 LT	Utility Box	118+16.58	19.63 LT	Water Meter
116+61.97	23.34 LT	Water Meter	118+18.58	19.63 LT	Water Meter
116+62.19	20.82 LT	Utility Box	118+66.24	17.57 RT	Water Meter
116+63.76	24.02 LT	Water Meter	118+68.19	17.55 RT	Water Meter
116+63.81	23.14 LT	Water Meter	118+70.09	17.58 RT	Water Meter
116+63.84	22.29 LT	Water Meter	118+70.69	23.28 RT	Sewer Cleanout
116+63.96	21.29 LT	Water Meter	118+71.83	17.63 RT	Water Meter
116+67.23	23.61 LT	Utility Box	118+73.85	17.57 RT	Water Meter
116+89.62	5.30 LT	Telephone Manhole	118+81.68	23.22 LT	Sewer Cleanout

LIST OF ENCROACHMENTS			
Sta	To Sta	Side	Element
116+64.86	118+13.66	LT	Ex Fencing to be relocated
118+70.71	118+77.66	LT	Ex Fencing in ROW



MATCHLINE STA. 115+00.00

MATCHLINE STA. 121+00.00

LEGEND

	TRENCH RESTORATION
	MILLING AND RESURFACING
	PAVEMENT WIDENING
	4" CONCRETE SIDEWALK
	6" CONC. CURB RAMP / DRIVEWAY
	TREE WELL: 7'X10', 6'X8', OR 4'X3' (TYP.)

NOTES:

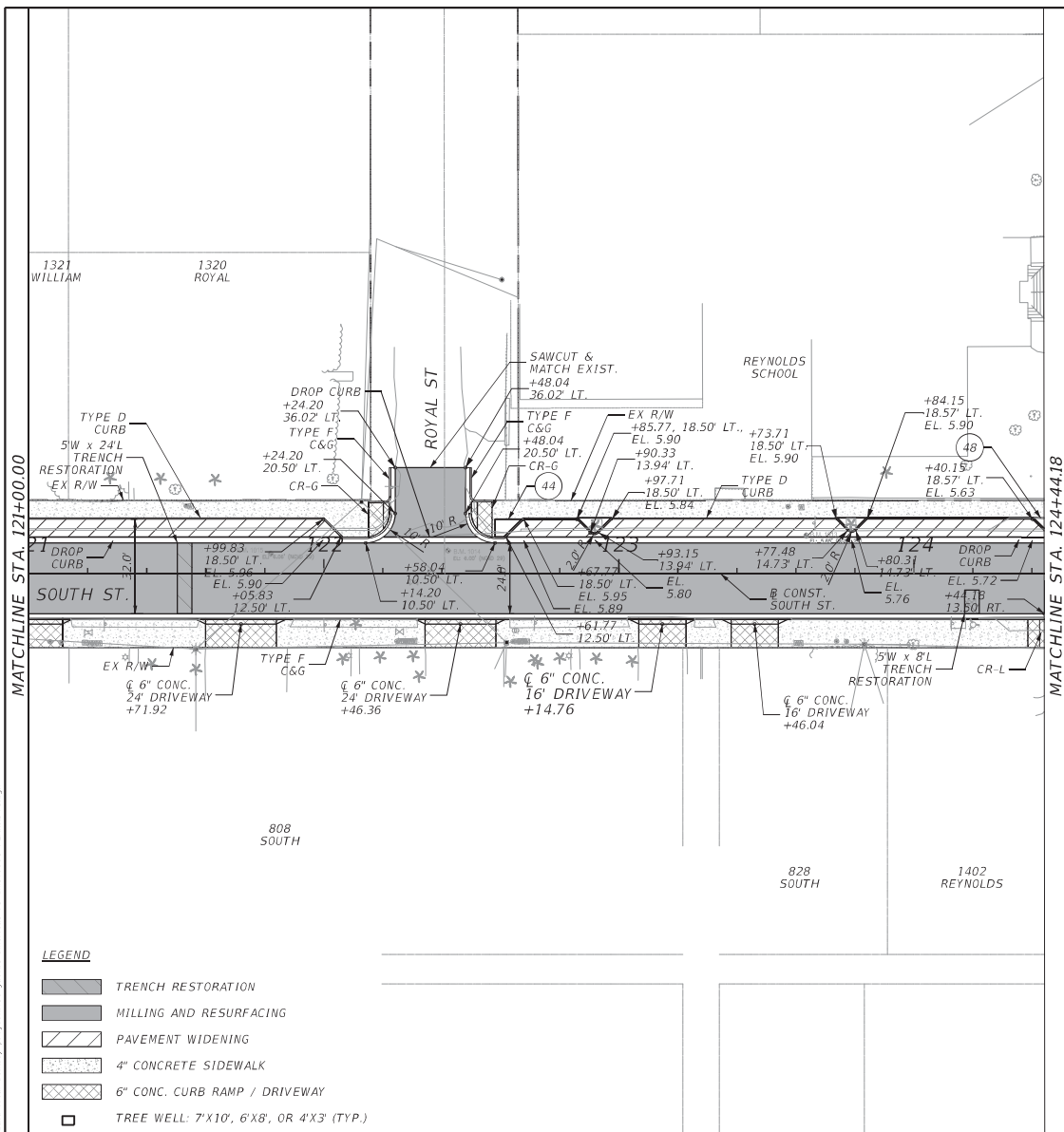
- CITY OF KEY WEST TO COORDINATE WITH PROPERTY OWNER AT 715, 717 & 719 SOUTH ST. TO RELOCATE FENCING BACK A MINIMUM OF 2 FT.
- INSTALL 2 MADRAX BOLLARD BIKE RACKS, PRODUCT: BOL450-2-SF(1G) BY GRABER MANUFACTURING, INC.

REVISIONS				TASK ORDER 9-22	PROJECT: SOUTH STREET IMPROVEMENTS	ROADWAY PLAN (3)	SHEET NO. 13
DATE	DESCRIPTION	DATE	DESCRIPTION				

2/2/2024 10:24:05 AM Karen E. Falkenberg, P.E. @ jacobs.com
c:\users\kfalkenb\appdata\local\temp\projectwise\jacobs-americas-01\dms89931\PLANRD01.dgn

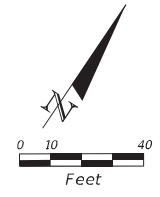
THE OFFICIAL RECORD OF THIS SHEET IS THE ELECTRONIC FILE DIGITALLY SIGNED AND SEALED UNDER RULE 61G15-23.004, F.A.C.

10/24/2024 10:24:31 AM Karen E. Falkenbergry@jacobs.com
 C:\Users\KAFalkenb\appdata\local\temp\projectwise\jacobs-america-01\dms89931\PLANRD01.dwg
 Karen.Falkenbergry@jacobs.com



LIST OF ENCROACHMENTS

Sta. to	Sta.	Side	Element
302+32.95	302+79.78	RT	Ex Fencing in ROW
303+26.09	303+46.65	RT	Ex Fencing in ROW
304+58.09	304+95.43	RT	Ex Fencing in ROW
304+98.42	305+07.16	RT	Ex Fencing in ROW
305+31.79	305+53.94	LT	Ex Bldg in ROW
305+53.44	305+96.11	RT	Ex Pavers in ROW
305+67.37	305+80.07	LT	Ex Wall in ROW
305+67.36	306+32.16	LT	Ex Fencing in ROW
305+97.55	306+04.13	LT	Ex Gate in ROW



UTILITY ADJUSTMENT TABLE

Station	Offset	Utility	Station	Offset	Utility
121+07.27	23.01' RT	Sewer Cleanout	122+65.46	2289' RT	Water Meter
121+10.93	23.23' RT	Sewer Cleanout	122+66.64	2287' RT	Water Meter
121+19.07	23.30' RT	Water Meter	122+67.76	2283' RT	Water Meter
121+20.22	19.84' RT	Sewer Valve	122+68.90	2289' RT	Water Meter
121+20.78	23.50' RT	Water Meter	122+30.49	2.68' RT	Water Valve
121+22.22	23.52' RT	Water Meter	122+36.43	0.18' LT	Sewer Manhole
121+23.91	23.53' RT	Water Meter	123+57.35	2282' LT	Sewer Cleanout
121+53.36	23.01' LT	Sewer Cleanout	123+60.23	2344' RT	Water Meter
121+54.83	22.89' LT	Water Meter	123+61.55	2347' RT	Water Meter
122+24.80	22.84' RT	Sewer Cleanout	123+61.89	2257' LT	Water Meter
122+25.66	19.64' RT	Water Valve	123+73.82	2280' RT	Sewer Cleanout
122+26.02	22.80' RT	Water Meter	124+19.65	9.58' RT	Water Valve
122+27.16	22.84' RT	Water Meter	124+58.41	8.76' RT	Water Valve
122+28.36	22.82' RT	Water Meter	124+61.49	5.96' RT	Water Valve
122+29.50	22.81' RT	Water Meter	124+63.68	12.06' RT	Water Valve
122+30.64	22.74' RT	Water Meter	124+66.66	9.18' RT	Water Valve
122+64.11	22.95' RT	Sewer Cleanout	124+69.87	0.29' LT	Sewer Manhole
122+64.97	19.18' RT	Utility Box			

UTILITY ADJUSTMENT TABLE (REYNOLDS ST)

Station	Offset	Utility
303+02.20	23.05' RT	Sewer Valve
303+17.99	22.75' RT	Water Meter
303+25.11	23.73' LT	Sewer Valve
303+40.87	21.95' RT	Sewer Valve
303+87.97	23.41' RT	Sewer Valve
303+89.54	23.61' RT	Water Meter
304+28.81	9.56' RT	Water Valve
304+32.81	23.82' LT	Sewer Valve
304+33.75	38.47' RT	Sewer Manhole
304+34.00	23.76' LT	Water Meter
304+41.86	24.26' LT	Sewer Valve
304+43.09	12.11' LT	Telephone Manhole
304+75.31	24.31' LT	Water Meter
305+04.12	22.52' RT	Water Meter
305+05.58	22.52' RT	Sewer Valve
305+18.29	22.87' RT	Sewer Valve
305+28.38	20.95' LT	Water Meter
305+29.51	20.92' LT	Sewer Valve
305+30.80	20.79' LT	Sewer Valve
305+31.95	20.76' LT	Water Meter
305+72.23	22.66' RT	Water Meter
305+73.95	22.77' RT	Water Meter
305+75.89	22.93' RT	Sewer Valve
306+05.23	1.27' LT	Sewer Manhole

LEGEND

- TRENCH RESTORATION
- MILLING AND RESURFACING
- PAVEMENT WIDENING
- 4" CONCRETE SIDEWALK
- 6" CONC. CURB RAMP / DRIVEWAY
- TREE WELL: 7'X10', 6'X8', OR 4'X3' (TYP.)

REVISIONS			
DATE	DESCRIPTION	DATE	DESCRIPTION

KAREN E. FALKENBERG, P.E.
 P.E. LICENSE NUMBER 54015
 JACOBS ENGINEERING GROUP, INC.
 200 W. FORSYTH ST., STE 1520
 JACKSONVILLE, FL 32202

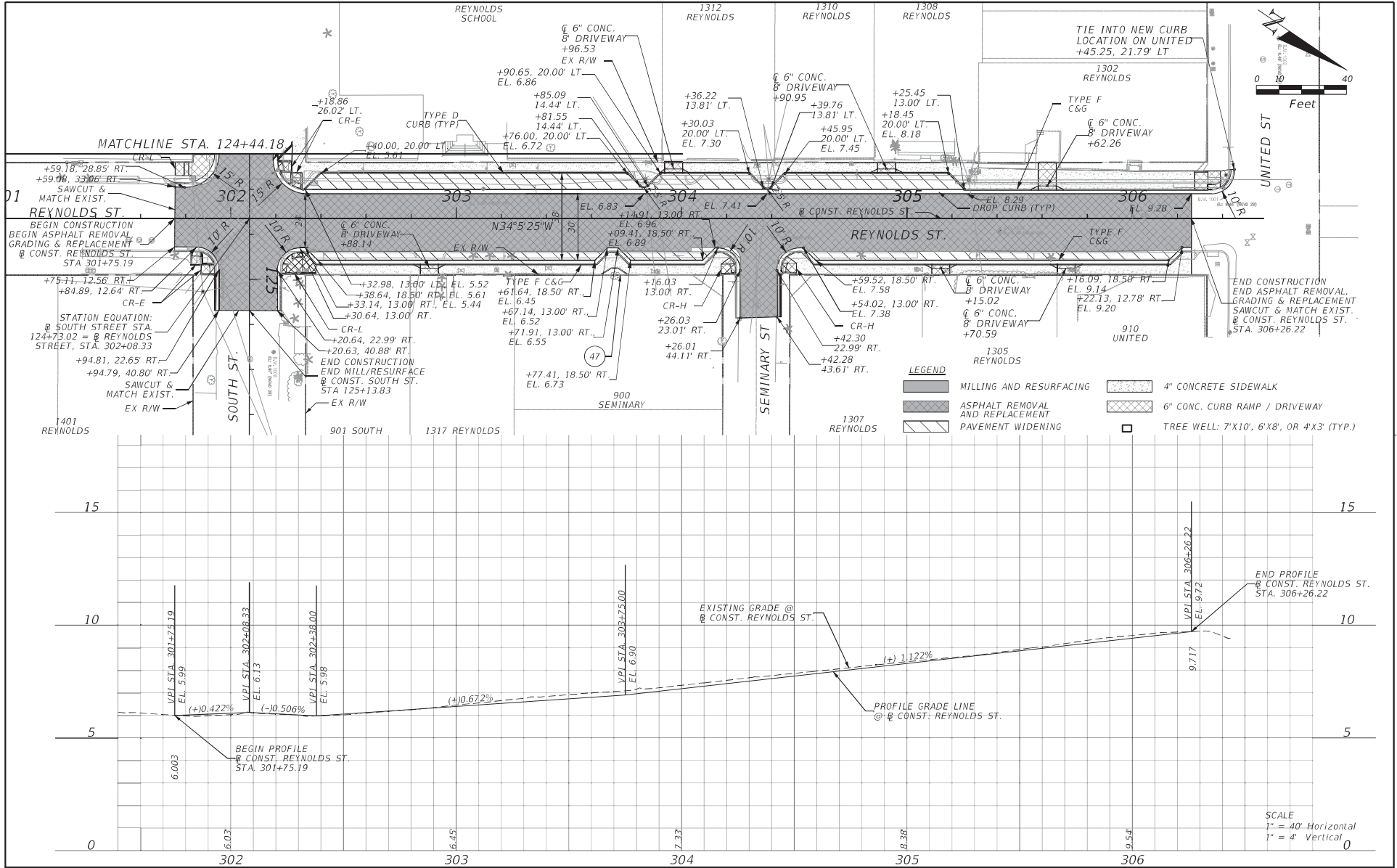


TASK ORDER 9-22
PROJECT: SOUTH STREET IMPROVEMENTS

ROADWAY PLAN (4)

SHEET NO.
14

THE OFFICIAL RECORD OF THIS SHEET IS THE ELECTRONIC FILE DIGITALLY SIGNED AND SEALED UNDER RULE 61G15-23.004, F.A.C.



REVISIONS		REVISIONS	
DATE	DESCRIPTION	DATE	DESCRIPTION

KAREN E. FALKENBERRY, P.E.
 P.E. LICENSE NUMBER 54015
 JACOBS ENGINEERING GROUP, INC.
 200 W. FORSYTH ST., STE 1520
 JACKSONVILLE, FL 32202

TASK ORDER 9-22

PROJECT:
SOUTH STREET IMPROVEMENTS

ROADWAY PLAN & PROFILE

SHEET NO.
15


THE OFFICIAL RECORD OF THIS SHEET IS THE ELECTRONIC FILE DIGITALLY SIGNED AND SEALED UNDER RULE 61G15-23.004, F.A.C.

Tree Inventory and Disposition

Zone	No.	Plant	Station	Side	Dia.	Size (HxW)	Existing Condition	Notes	Disposition	Tree Well #	Replacement Tree Information			
											Plant	Dia.	Size (HxW)	
1	1	Thrinax radiata Thatch Palm	104+81.74	RT	---	10'-12' o.a. 5'-6'	Fair	1401 Duval: soil planter	Transplant Remove	---	---	---	---	TRANSPLANT
1	2	Thrinax radiata Thatch Palm	105+01.04	RT	---	10'-13' o.a. 5'-6'	Fair	1401 Duval: soil planter, leaning over s/w	Transplant Remove	---	---	---	---	TRANSPLANT
1	3	Thrinax radiata Thatch Palm	105+19.50	RT	---	15'-20' o.a. 10'-12'	Fair	1401 Duval: soil planter	Transplant Remove	---	---	---	---	TRANSPLANT
1	4	Thrinax radiata Thatch Palm	105+38.11	RT	---	13'-15' o.a. 8'-10'	Poor	1401 Duval: soil planter	Remove	---	---	---	---	TRANSPLANT
--	--	Thrinax radiata Thatch Palm	106+12.43	RT	---	10'-12' o.a.	---	Selected specimen to be FL #1 or better	---	1	GREEN BUTTONWOOD	---	---	
--	--	Thrinax radiata Thatch Palm	106+76.21	RT	---	10'-12' o.a.	---	Selected specimen to be FL #1 or better	---	2	SILVER BUTTONWOOD	---	---	
--	--	Thrinax radiata Thatch Palm	108+66.47	RT	---	10'-12' o.a.	---	Selected specimen to be FL #1 or better	---	5	SILVER BUTTONWOOD	---	---	
--	--	Thrinax radiata Thatch Palm	108+82.94	RT	---	10'-12' o.a.	---	Selected specimen to be FL #1 or better	---	6	GREEN BUTTONWOOD	---	---	
1	5	Adonidia merrillii Christmas Palm	109+06.02	RT	---	15'-16' o.a. 8'-10'	Fair	510 South: grass tree lawn, under utility lines	Replace	8	Thrinax radiata Thatch Palm	---	10'-12' o.a.	
1	6	Adonidia merrillii Christmas Palm DBL	109+18.47	RT	---	1-15' o.a. 2-9' o.a.	1 - Fair 2 - Poor	510 South: grass tree lawn, under utility lines	Replace	9	Thrinax radiata Thatch Palm	---	10'-12' o.a.	
1	7	Adonidia merrillii Christmas Palm	109+35.47	RT	---	15' o.a.	Poor	510 South: grass tree lawn, under utility lines	Replace	10	Thrinax radiata Thatch Palm	---	10'-12' o.a.	
1	8	Cocos nucifera Coconut Palm	105+43.09	LT	---	30'-35' o.a. 15'-18'	Fair	1319 Duval: soil planter, leaning over parking area	Remove	---	---	---	---	
1	9	Cocos nucifera Coconut Palm	105+63.34	LT	---	15'-18' o.a. 8'-10'	Fair	1319 Duval: soil planter, leaning over parking area	Remove	---	---	---	---	
1	10	Cocos nucifera Coconut Palm	105+82.11	LT	---	40'-50' o.a. 20'-25'	Fair	1319 Duval: soil planter, leaning over parking area	Remove	---	---	---	---	
--	--	Thrinax radiata Thatch Palm	107+17.10	LT	---	10'-12' o.a.	---	Selected specimen to be FL #1 or better	---	3	SILVER BUTTONWOOD	---	---	
1	11	Swietenia mahagoni Mahogany Tree	107+80.00	LT	42.6"	55'-60' o.a. 50'-60'	Good RETAIN PROTECT	1330 Simonton: Soil planter, utility lines through canopy, sidewalk lifted. Replace concrete w/Flexi-pave.	To Remain	4	---	---	---	
--	--	Thrinax radiata Thatch Palm	108+79.95	LT	---	10'-12' o.a.	---	Selected specimen to be FL #1 or better	---	7	GUMBO LIMBO	---	---	
2	1	Conocarpus erectus var. sericeus Silver Buttonwood	110+62.08	RT	4.9"	13'-15' x 10'-11'	Fair	1401 Simonton: grass/stone, maintained/hedge, under utility lines	To Remain	11	---	---	---	
2	2	Conocarpus erectus var. sericeus Silver Buttonwood	110+75.78	RT	4.5"	12'-14' x 9'x10'	Poor	1401 Simonton: grass/stone, maintained/hedge, leaning under utility	To Remain	12	---	---	---	
2	3	Conocarpus erectus var. sericeus Silver Buttonwood	111+11.74	RT	8.5"	15'-18' x 15'-18'	Fair	1401 Simonton: grass/stone, maintained/hedge, leaning under utility	To Remain	13	---	---	---	
2	4	Conocarpus erectus var. sericeus Silver Buttonwood	111+23.81	RT	3"	8'-9' x 6'-7'	Poor	1401 Simonton: grass/stone, maintained/hedge, under utility lines	To Remain	14	---	---	---	
2	5	Conocarpus erectus var. sericeus Silver Buttonwood	111+36.96	RT	7.3"	15'-18' x 16'-18'	Poor	1401 Simonton: grass/stone, maintained/hedge, leaning under utility	To Remain	15	---	---	---	
2	6	Conocarpus erectus var. sericeus Silver Buttonwood	111+49.28	RT	7"	18'-20' x 16'-18'	Poor	1401 Simonton: grass/stone, maintained/hedge, under utility lines	To Remain	16	---	---	---	
2	7	Conocarpus erectus var. sericeus Silver Buttonwood	111+62.74	RT	6.8"	18'-20' x 12'-13'	Fair	1401 Simonton: grass/stone, maintained/hedge, slight lean under utility	To Remain	17	---	---	---	
2	8	Conocarpus erectus var. sericeus Silver Buttonwood	111+74.99	RT	5.6"	13'-18' x 12'-13'	Fair	1401 Simonton: grass/stone, maintained/hedge, slight lean	To Remain	18	---	---	---	
2	9	Conocarpus erectus var. sericeus Silver Buttonwood	111+85.37	RT	4.7"	10'-12' x 6'x8'	Poor	1401 Simonton: grass/stone, maintained/hedge, leaning/under utility	To Remain	19	---	---	---	
2	10	Capparis cynophallophora Jamaica Caper	113+03.56	RT	0.9"	6 x 5'	Poor	630 South: soil planter	Remove	---	---	---	---	TO REMAIN
2	11	Conocarpus erectus var. sericeus Silver Buttonwood	113+12.83	RT	4"	8 x 8'	Poor	630 South: soil planter, slightly leaning	Replace	21	Conocarpus erectus var. sericeus Silver Buttonwood	2"-4"	10'-15' o.a.	TO REMAIN
2	12	Ficus macrocarpa Green Island Ficus	113+22.99	RT	---	2 x 3'	Fair	630 South: soil planter, ground cover	Remove	---	---	---	---	N/A

1/31/2024 1:42:48 PM Karen.Falkenberry@jacobs.com
c:\users\kfalkenb\appdata\local\bentley\projectwise\jacobs-americas-01\dms89931\LANDRD01.dgn

THE OFFICIAL RECORD OF THIS SHEET IS THE ELECTRONIC FILE DIGITALLY SIGNED AND SEALED UNDER RULE 61G15-23.004, F.A.C.

REVISIONS DATE DESCRIPTION DATE DESCRIPTION		KAREN E. FALKENBERRY, P.E. P.E. LICENSE NUMBER 54015 JACOBS ENGINEERING GROUP, INC. 200 W. FORSYTH ST., STE 1520 JACKSONVILLE, FL 32202		TASK ORDER 9-22 PROJECT: SOUTH STREET IMPROVEMENTS	LANDSCAPE TABLE (1)	SHEET NO.
						24

Tree Inventory and Disposition Continued

Zone	No.	Plant	Station	Side	Dia.	Size (HxW)	Existing Condition	Notes	Disposition	Tree Well #	Replacement Tree Information			
											Plant	Dia.	Size (HxW)	
2	13	Genipa clusiifolia Seven-Year Apple	113+32.75	RT	0.6"	7' x 6'	Fair	630 South: soil planter	Replace	23	Conocarpus erectus var. sericeus	2'-4"	10'-15' o.a.	TO REMAIN
2	14	Delonix regia Poinciana Tree	113+53.65	RT	4.5"	18'-20' x 28'-30'	Very Poor	630 South: soil planter, leaning, mechanical damage	Replace	24	Conocarpus erectus var. sericeus Silver Buttonwood	2'-4"	10'-15' o.a.	
3	1	Syagrus romanzoffiana Queen Palm	113+92.50	LT	---	19'-20' o.a. 10'-12'	Poor	701 South: grass tree lawn	Remove	---	---	---	---	
--	--	Cassia javanica Apple Blossom Tree	113+70.00	LT	3"	14'-16'	---	Selected specimen to be FL #1 or better	---	25	YELLOW TABEBUIA	---	---	
3	2	Cocos nucifera Coconut Palm DBL	114+39.46	LT	---	W: 30'-35' o.a. x 18'-20' E: 35'-40' o.a. x 20'-25'	W: Fair E: Fair	703 South: grass tree lawn	Remove	---	---	---	---	
--	--	Cassia bakeriana Pink Shower Tree	114+50.00	LT	3"-4"	12'-14' o.a.	---	Selected specimen to be FL #1 or better	---	20	---	---	---	
--	--	Cassia javanica Apple Blossom Tree	114+72.37	LT	3"	14'-16'	---	Selected specimen to be FL #1 or better	---	26	---	---	---	
3	3	Adonidia merrillii Christmas Palm DBL	114+87.73	LT	---	W: 19'-20' o.a. x 14'-16' E: 20'-25' o.a. x 15'-18'	W: Poor E: Poor	707 South: grass tree lawn	Remove	---	---	---	---	
3	4	Adonidia merrillii Christmas Palm	114+90.01	LT	---	19'-20' o.a. 14'-16'	Poor	707 South: grass tree lawn	Remove	---	---	---	---	
3	5	Adonidia merrillii Christmas Palm DBL	115+75.83	LT	---	W: 21'-23' o.a. x 19'-20' E: 21'-23' o.a. x 19'-20'	W: Poor E: Poor	711 South: grass tree lawn	To Remain	31	---	---	---	
3	6	Adonidia merrillii Christmas Palm	115+76.70	LT	---	21'-23' o.a. 19'-20'	Poor	711 South: grass tree lawn	To Remain	31	---	---	---	
3	7	Cocos nucifera Coconut Palm	115+79.18	LT	---	65'-70' o.a. 45'-50'	Fair	711 South: grass tree lawn	To Remain	31	---	---	---	
3	8	Carissa macrocarpa Natal Plum (15)	116+01.12	LT	---	5.5' x 20'	Fair	711 South: thorns, hedged grass tree lawn	Remove	---	N/A	---	---	
--	--	Thrinax radiata Thatch Palm	105+01.73	RT	---	10'-12' o.a.	---	Selected specimen to be FL #1 or better	---	34	---	---	---	
3	9	Adonidia merrillii Christmas Palm	116+47.13	LT	---	20'-25' o.a. 12'-15'	Fair/Poor	711 South: grass tree lawn	Remove	---	---	---	---	
3	10	Adonidia merrillii Christmas Palm	116+49.16	LT	---	20'-25' o.a. 12'-15'	Fair/Poor	711 South: grass tree lawn	Remove	---	---	---	---	
3	11	Bucida buceras Black Olive Tree	115+31.07	RT	15.8"	45'-50' x 25'-30'	Fair	706 South: utility lines thru canopy, flexi-pave planter	Replace	27	Tabebuia aurea Yellow Trumpet Tree	4'-6"	10'-15' o.a.	TO REMAIN
3	12	Bucida buceras Black Olive Tree	115+38.94	RT	10.9"	45'-50' x 25'-30'	Poor	706 South: utility lines thru canopy, rock planter	Replace	28	Tabebuia aurea Yellow Trumpet Tree	4'-6"	10'-15' o.a.	REMOVE
3	13	Bucida buceras Black Olive Tree	115+53.56	RT	10.1"	35'-40' x 15'-20'	Fair	706 South: utility lines thru canopy, flexi-pave planter	Replace	29	Tabebuia aurea Yellow Trumpet Tree	4'-6"	10'-15' o.a.	TO REMAIN
3	14	Bucida buceras Black Olive Tree	115+70.66	RT	5.4"	15'-18' x 15'	Poor	708 South: utility lines thru canopy, rock planter	Replace	30	Tabebuia aurea Yellow Trumpet Tree	4'-6"	10'-15' o.a.	TO REMAIN
3	15	Bucida buceras Black Olive Tree	115+83.85	RT	12.8"	35'-40' x 25'-30'	Fair	708 South: utility lines thru canopy, flexi-pave planter	Replace	32	Tabebuia aurea Yellow Trumpet Tree	4'-6"	10'-15' o.a.	TO REMAIN
3	16	Bucida buceras Black Olive Tree	115+97.31	RT	12"	35'-40' x 25'-30'	Poor	708 South: utility lines thru canopy, flexi-pave planter	Replace	33	Tabebuia aurea Yellow Trumpet Tree	4'-6"	10'-15' o.a.	TO REMAIN
3	17	Bucida buceras Black Olive Tree	116+11.42	RT	6.6"	18'-20' x 15'-18'	Fair	1400 Alberta: utility lines thru canopy, rock planter	Replace	35	Tabebuia aurea Yellow Trumpet Tree	4'-6"	10'-15' o.a.	TO REMAIN
3	18	Bucida buceras Black Olive Tree	116+24.43	RT	15.6"	45'-50' x 30'-35'	Poor	1400 Alberta: utility lines thru canopy, flexi-pave planter	Replace	36	Tabebuia aurea Yellow Trumpet Tree	4'-6"	10'-15' o.a.	TO REMAIN
3	19	Bucida buceras Black Olive Tree	116+38.33	RT	13.5"	45'-50' x 25'-30'	Fair	1400 Alberta: utility lines thru canopy, rock planter	Replace	37	Tabebuia aurea Yellow Trumpet Tree	4'-6"	10'-15' o.a.	TO REMAIN
3	20	Bucida buceras Black Olive Tree	116+50.97	RT	9.2"	35'-40' x 15'-20'	Poor	1400 Alberta: utility lines thru canopy, rock planter	Replace	38	Tabebuia aurea Yellow Trumpet Tree	4'-6"	10'-15' o.a.	TO REMAIN

1/29/2024 1:11:04 PM Karen.Falkenberry@jacobs.com
c:\users\kfalkenb\appdata\local\bentley\projectwise\jacobs-americas-01\dms89931\LANDRD01.dgn

THE OFFICIAL RECORD OF THIS SHEET IS THE ELECTRONIC FILE DIGITALLY SIGNED AND SEALED UNDER RULE 61G15-23.004, F.A.C.

REVISIONS			
DATE	DESCRIPTION	DATE	DESCRIPTION

KAREN E. FALKENBERRY, P.E.
P.E. LICENSE NUMBER 54015
JACOBS ENGINEERING GROUP, INC.
200 W. FORSYTH ST., STE 1520
JACKSONVILLE, FL 32202



TASK ORDER 9-22
PROJECT:
SOUTH STREET IMPROVEMENTS

LANDSCAPE TABLE (2)

SHEET NO.
25

Tree Inventory and Disposition Continued

Zone	No.	Plant	Station	Side	Dia.	Size (HxW)	Existing Condition	Notes	Disposition	Tree Well #	Replacement Tree Information			
											Plant	Dia.	Size (HxW)	
3	21	Bucida buceras Black Olive Tree	116+66.98	RT	11"	35'-40' x 25'-30'	Poor	1400 Alberta: utility lines thru canopy, rock planter	Replace	39	Tabebuia aurea Yellow Trumpet Tree	4"-6"	10'-15' o.a.	TO REMAIN
3	22	Cocos nucifera Coconut Palm	117+33.11	RT	---	35'-40' o.a. 18'-20'	Fair	714 South: leaning into street	To Remain	22	---	---	---	
--	--	Cassia javanica Apple Blossom Tree	117+44.71	LT	3"	14'-16'	---	Selected specimen to be FL #1 or better	---	40	---	---	---	
---	---	Cassia bakeriana Pink Shower Tree	118+16.66	LT	3"-4"	12'-14' o.a.	---	Selected specimen to be FL #1 or better	---	45	---	---	---	
3	23	Cocos nucifera Coconut Palm	118+48.87	LT	---	35'-40' o.a. 18'-20'	Fair	721 South: leaning into street	Remove	---	---	---	---	
3	24	Cocos nucifera Coconut Palm	118+61.51	LT	---	35'-40' o.a. 20'-25'	Poor	721 South: leaning into street	Remove	---	---	---	---	
3	25	Cocos nucifera Coconut Palm	118+74.35	LT	---	35'-40' o.a. 20'-25'	Poor	725 South: leaning into street, lethal yellowing	Remove	---	---	---	---	
--	--	Lysiloma sabicu Sabicu	118+77.90	RT	5" min.	12'-14' o.a.	---	Selected specimen to be FL #1 or better	---	41	---	---	---	
3	26	Cocos nucifera Coconut Palm	118+88.64	LT	---	40'-45' o.a. 25'-30'	Poor	725 South: leaning into street	Remove	---	---	---	---	
--	--	Cassia bakeriana Pink Shower Tree	118+90.99	LT	3"-4"	12'-14' o.a.	---	Selected specimen to be FL #1 or better	---	46	---	---	---	
--	--	Lysiloma sabicu Sabicu	119+21.99	RT	5" min.	12'-14' o.a.	---	Selected specimen to be FL #1 or better	---	42	---	---	---	
3	27	Cocos nucifera Coconut Palm	119+06.71	LT	---	40'-45' o.a. 30'-35'	Poor	725 South: leaning into street, lethal yellowing	Remove	---	---	---	---	
3	28	Cocos nucifera Coconut Palm	119+23.80	LT	---	45'-50' o.a. 30'-35'	Poor	725 South: Leaning into street, lethal yellowing	Remove	---	---	---	---	
3	29	Cocos nucifera Coconut Palm	119+40.46	LT	---	35'-40' o.a. 20'-25'	Fair	725 South: leaning into street	Remove	---	---	---	---	
3	30	Cocos nucifera Coconut Palm	119+54.71	LT	---	35'-40' o.a. 20'-25'	Poor	725 South: leaning into street, lethal yellowing	Replace	43	Lysiloma sabicu Sabicu	5" min.	12'-14' o.a.	
3	31	Tabebuia heterophylla Pink Trumpet Tree	119+61.52	LT	Codom 10" + 8"	35'-40' x 15'-20'	Poor	725 South: Wrought iron fence embedded into trunk	Remove	---	---	---	---	
4	1	Syagrus romanzoffiana Queen Palm	122+10.86	RT	---	20'-25' o.a. 12'-16'	Fair	810 South: Grass lawn	Remove	---	---	---	---	
--	--	Lysiloma sabicu Sabicu	122+62.55	LT	5" min.	12'-14' o.a.	---	Selected specimen to be FL #1 or better	---	44	---	---	---	
4	2	Cocos nucifera Coconut Palm	122+91.97	LT	---	20'-25' o.a. 12'-16'	Poor	Reynolds School soil planter, lethal yellowing	To Remain	49	BULNESIA	---	---	REMOVE
4	3	Cocos nucifera Coconut Palm	123+78.71	LT	---	30'-35' o.a. 15'-20'	Fair	Reynolds School soil planter	To Remain	50	RED STOPPER	---	---	REMOVE
--	--	Lysiloma sabicu Sabicu	124+40.00	LT	5" min.	12'-18' o.a.	---	Selected specimen to be FL #1 or better	---	48	---	---	---	
5	1	Ground covers - various	303+02.00	RT	---	1' x 1'	Fair/Poor	901 South: Liriope, Fakahatchee grass, Flax, sago soil planter	Remove	---	N/A	---	---	
5	2	Thrinax radiata FL Thatch Palm	303+02.00	RT	---	3' o.a. 3'	Good	901 South: soil planter	Remove Transplant	---	---	---	---	TRANSPLANT
5	3	Ficus benjamina Ficus	303+02.00	RT	1.5"	6'-8' x 4'-5'	Fair	901 South: soil planter	Remove	---	N/A	---	---	
5	4	Aloe	303+02.00	RT	1"	1' x 1'	Fair	901 South: soil planter	Remove	---	N/A	---	---	
5	5	Adonidia merrillii Christmas Palm	303+07.65	RT	---	18'-20' o.a. 10'-12'	Fair	1317 Reynolds: leaning into street, soil planter	Remove	---	---	---	---	
5	6	Adonidia merrillii Christmas Palm	303+14.94	RT	---	20'-25' o.a. 12'-15'	Fair	1317 Reynolds: leaning into street, soil planter	Remove	---	---	---	---	
5	7	Cocos nucifera Coconut Palm	303+24.80	RT	---	35'-40' o.a. 20'-25'	Fair	1317 Reynolds: leaning into street, soil planter	Remove	---	---	---	---	
5	8	Melicoccus bijugatu Spanish Lime	303+70.38	RT	28"	30'-35' x 18'-20'	PROTECT	1315 Reynolds: Shared tree trunk and root system on City property, flexi-pave	To Remain	47	---	---	---	
5	9	Adonidia merrillii Christmas Palm	304+79.68	RT	---	16'-18' o.a. 10'-12'	Fair	1307 Reynolds: leaning into street, soil planter	Remove	---	---	---	---	
5	10	Cocos nucifera Coconut Palm	305+63.84	RT	---	30'-35' o.a. 15'-20'	Fair	1305 Reynolds: leaning into street, soil planter	Remove	---	---	---	---	
5	11	Randia aculeata White Indigo Berry Tree	306+00.00	RT	0.5"	3' x 3'	Fair	910 United: seedling, soil planter	Remove	---	---	---	---	

1/29/2024 1:11:22 PM Karen.Falkenberry@jacobs.com
c:\users\kfalkenb\appdata\local\bentley\projectwise\jacobs-americas-01\dms89931\LANDRD01.dgn

THE OFFICIAL RECORD OF THIS SHEET IS THE ELECTRONIC FILE DIGITALLY SIGNED AND SEALED UNDER RULE 61G15-23.004, F.A.C.

REVISIONS DATE DESCRIPTION DATE DESCRIPTION		KAREN E. FALKENBERRY, P.E. P.E. LICENSE NUMBER 54015 JACOBS ENGINEERING GROUP, INC. 200 W. FORSYTH ST., STE 1520 JACKSONVILLE, FL 32202		TASK ORDER 9-22 PROJECT: SOUTH STREET IMPROVEMENTS	LANDSCAPE TABLE (3)	SHEET NO.
						26

CONTRACT PLANS COMPONENTS

ROADWAY PLANS
SIGNING AND PAVEMENT MARKING PLANS

CITY OF KEY WEST

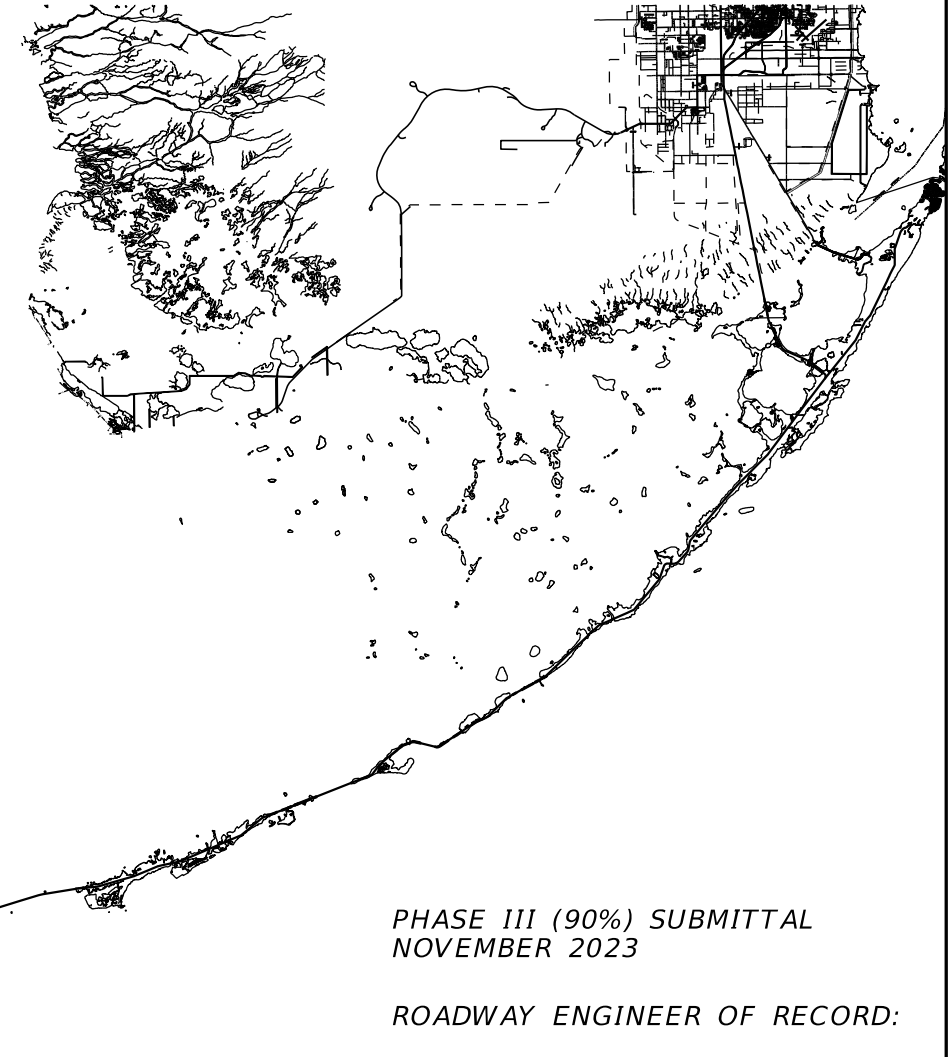
TASK ORDER 9-22
SOUTH STREET IMPROVEMENTS

MONROE COUNTY

ROADWAY PLANS

INDEX OF ROADWAY PLANS

SHEET NO.	SHEET DESCRIPTION
1	KEY SHEET
2	SIGNATURE SHEET
3	SUMMARY OF PAY ITEMS
4	GENERAL NOTES
5	TREE PROTECTION NOTES
6 - 7	TYPICAL SECTION
8 - 10	DETAILS
11 - 14	ROADWAY PLAN
15	ROADWAY PLAN/PROFILE
16	DRAINAGE DETAILS
17 - 21	DRAINAGE PLAN
22	ROADWAY SOILS SURVEY
23	ROADWAY SOIL PROFILES
24 - 26	LANDSCAPE TABLE



PROJECT LOCATION

PHASE III (90%) SUBMITTAL
NOVEMBER 2023

ROADWAY ENGINEER OF RECORD:

KAREN E. FALKENBERRY P.E.
P.E. LICENSE NUMBER 54015
JACOBS ENGINEERING GROUP INC.
200 W. FORSYTH ST., STE 1520
JACKSONVILLE, FLORIDA 32202

CITY PROJECT MANAGER:

GARY J. VOLENEC, P.E.

GOVERNING STANDARD PLANS:

Florida Department of Transportation, FY 2023-24 Standard Plans for Road and Bridge Construction and applicable Interim Revisions (IRs).

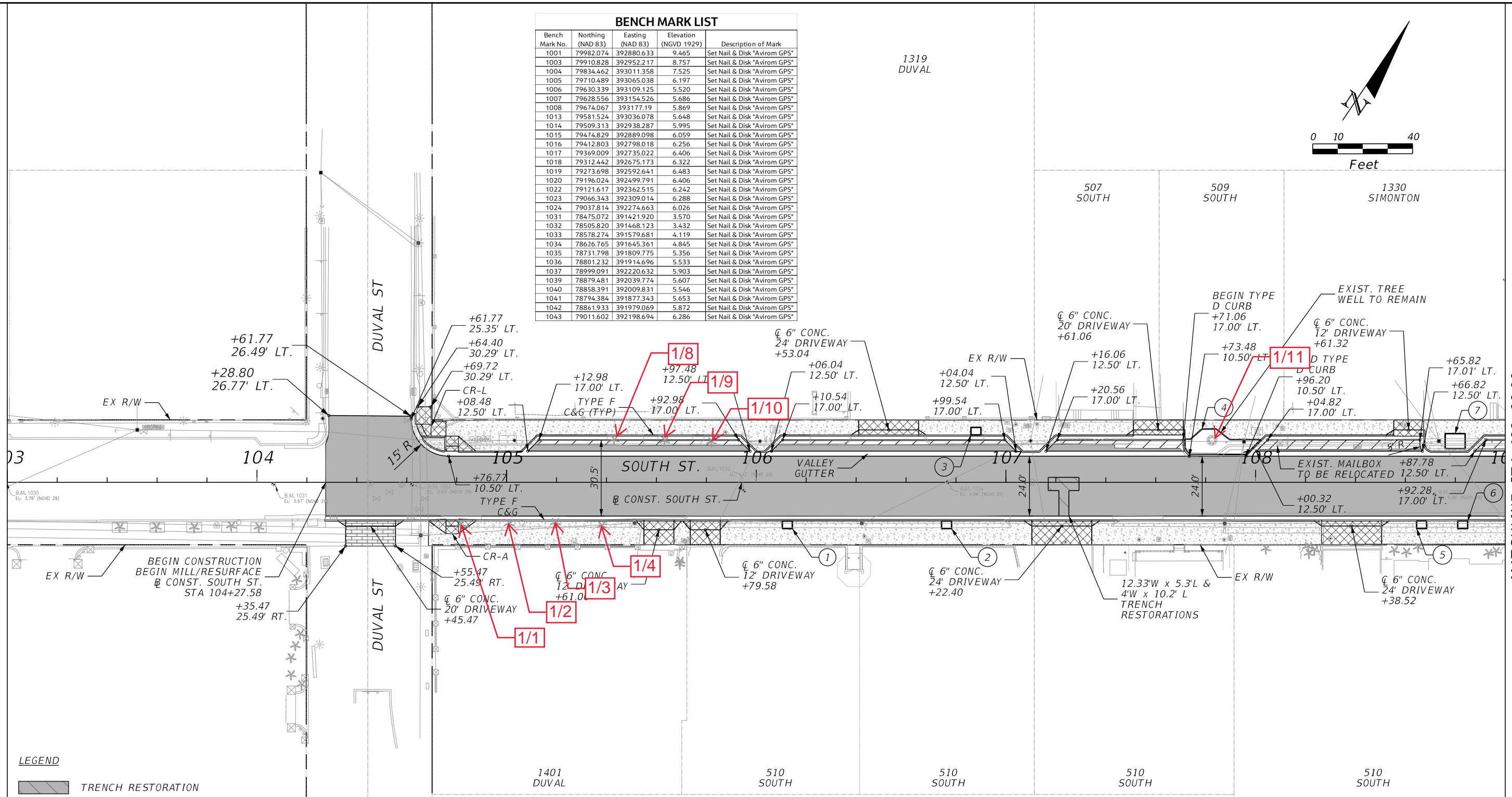
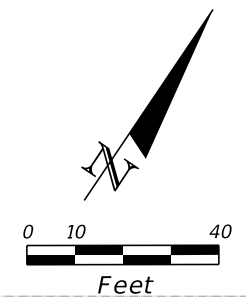
Standard Plans for Road Construction and associated IRs are available at the following website: <http://www.fdot.gov/design/standardplans>

GOVERNING STANDARD SPECIFICATIONS:

Florida Department of Transportation, FY 2023-24 Standard Specifications for Road and Bridge Construction at the following website: <http://www.fdot.gov/programmanagement/Implemented/SpecBooks>

CONSTRUCTION CONTRACT NO.	FISCAL YEAR	SHEET NO.
	24	1

BENCH MARK LIST				
Bench Mark No.	Northing (NAD 83)	Easting (NAD 83)	Elevation (NGVD 1929)	Description of Mark
1001	79982.074	392880.633	9.465	Set Nail & Disk "Avirom GPS"
1003	79910.828	392952.217	8.757	Set Nail & Disk "Avirom GPS"
1004	79834.462	393011.358	7.525	Set Nail & Disk "Avirom GPS"
1005	79710.489	393065.038	6.197	Set Nail & Disk "Avirom GPS"
1006	79630.339	393109.125	5.520	Set Nail & Disk "Avirom GPS"
1007	79628.556	393154.526	5.686	Set Nail & Disk "Avirom GPS"
1008	79674.067	393177.19	5.869	Set Nail & Disk "Avirom GPS"
1013	79581.524	393036.078	5.648	Set Nail & Disk "Avirom GPS"
1014	79509.313	392938.287	5.995	Set Nail & Disk "Avirom GPS"
1015	79474.829	392889.098	6.059	Set Nail & Disk "Avirom GPS"
1016	79412.803	392798.018	6.256	Set Nail & Disk "Avirom GPS"
1017	79369.009	392735.022	6.406	Set Nail & Disk "Avirom GPS"
1018	79312.442	392675.173	6.322	Set Nail & Disk "Avirom GPS"
1019	79273.698	392592.641	6.483	Set Nail & Disk "Avirom GPS"
1020	79196.024	392499.791	6.406	Set Nail & Disk "Avirom GPS"
1022	79121.617	392362.515	6.242	Set Nail & Disk "Avirom GPS"
1023	79066.343	392309.014	6.288	Set Nail & Disk "Avirom GPS"
1024	79037.814	392274.663	6.026	Set Nail & Disk "Avirom GPS"
1031	78475.072	391421.920	3.570	Set Nail & Disk "Avirom GPS"
1032	78505.820	391468.123	3.432	Set Nail & Disk "Avirom GPS"
1033	78578.274	391579.681	4.119	Set Nail & Disk "Avirom GPS"
1034	78626.765	391645.361	4.845	Set Nail & Disk "Avirom GPS"
1035	78731.798	391809.775	5.356	Set Nail & Disk "Avirom GPS"
1036	78801.232	391914.696	5.533	Set Nail & Disk "Avirom GPS"
1037	78999.091	392220.632	5.903	Set Nail & Disk "Avirom GPS"
1039	78879.481	392039.774	5.607	Set Nail & Disk "Avirom GPS"
1040	78858.391	392009.831	5.546	Set Nail & Disk "Avirom GPS"
1041	78794.384	391877.343	5.653	Set Nail & Disk "Avirom GPS"
1042	78861.933	391979.069	5.872	Set Nail & Disk "Avirom GPS"
1043	79011.602	392198.694	6.286	Set Nail & Disk "Avirom GPS"



LEGEND

	TRENCH RESTORATION
	MILLING AND RESURFACING
	ASPHALT REMOVAL AND REPLACEMENT
	PAVEMENT WIDENING
	4" CONCRETE SIDEWALK
	6" CONC. CURB RAMP / DRIVEWAY
	PAVERS
	TREE WELL: 7'X10', 6'X8', OR 4'X3' (TYP.)

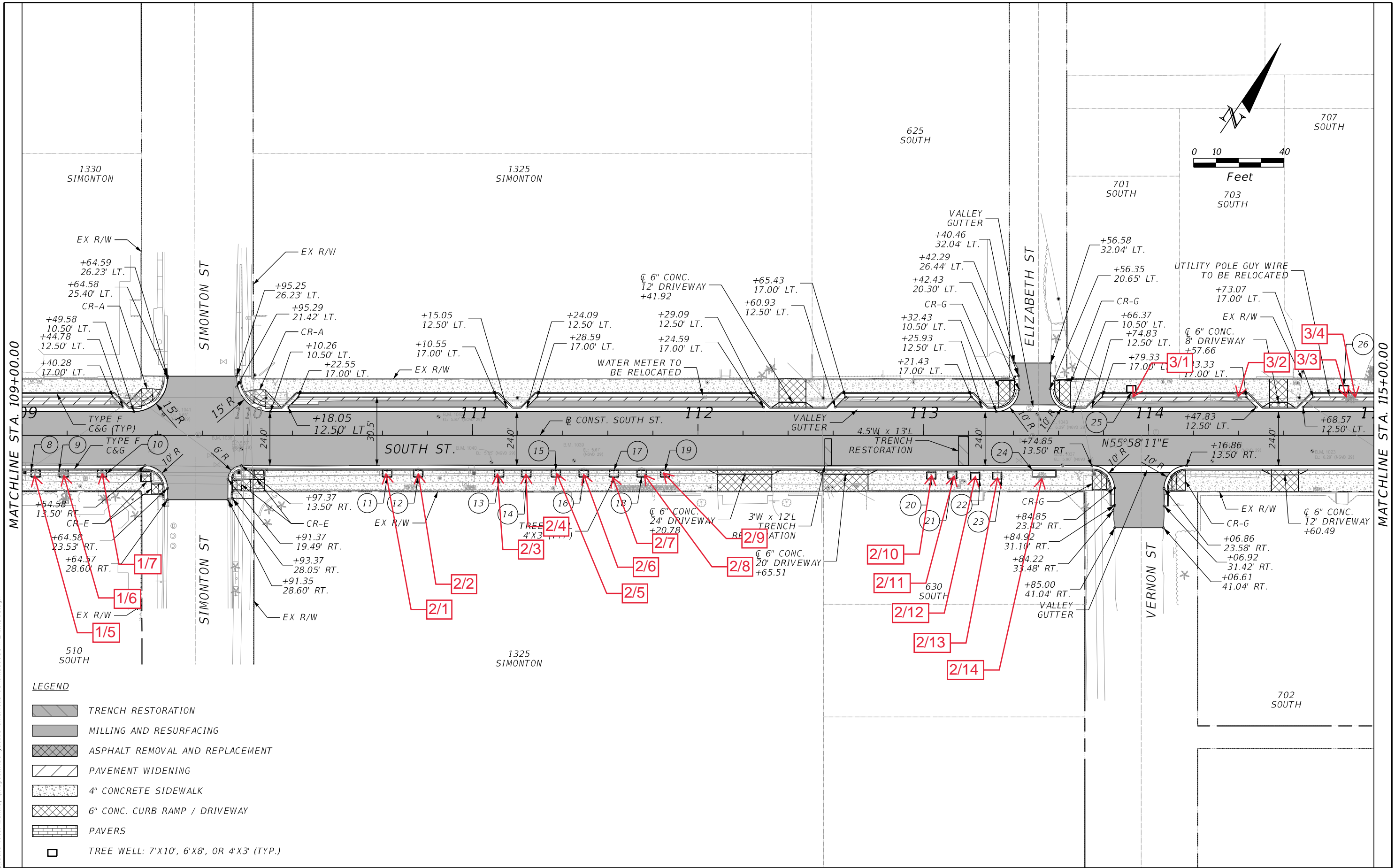
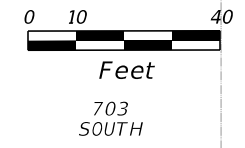
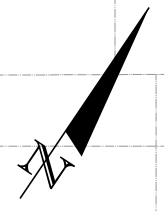
- NOTE:**
- FOR CURB RAMP DETAILS, REFER TO FDOT STANDARD INDEX NO. 522-002
 - FOR SIDEWALK THICKNESS IN CURB RETURN, REFER TO FDOT STANDARD INDEX. NO. 522-001
 - FOR DRIVEWAY DETAILS, SEE DRIVEWAY PROFILE SHEETS.
 - FOR DRAINAGE DESIGN, SEE DRAINAGE PLAN SHEETS 17-20.
 - TREE WELLS ARE NUMBERED WITH CIRCLED CALLOUTS.

Existing Tree Designation:
1/1: Corresponds to Zone 1, Number 1 in the Tree Inventory and Disposition Table.

11/16/2023 8:56:35 AM Karen.Falkenberry@jacobs.com c:\users\kfalkenb\appdata\local\bentley\projectwise\jacobs-america-01\dms89931\PLANRD01.dgn

MATCHLINE STA. 109+00.00 THE OFFICIAL RECORD OF THIS SHEET IS THE ELECTRONIC FILE DIGITALLY SIGNED AND SEALED UNDER RULE 61G15-23.004, F.A.C.

REVISIONS		KAREN E. FALKENBERRY, P.E. P.E. LICENSE NUMBER 54015 JACOBS ENGINEERING GROUP, INC. 200 W. FORSYTH ST., STE 1520 JACKSONVILLE, FL 32202		TASK ORDER 9-22	PROJECT: SOUTH STREET IMPROVEMENTS	ROADWAY PLAN (1)	SHEET NO. 11
DATE	DESCRIPTION						



MATCHLINE STA. 109+00.00

MATCHLINE STA. 115+00.00

- LEGEND**
- TRENCH RESTORATION
 - MILLING AND RESURFACING
 - ASPHALT REMOVAL AND REPLACEMENT
 - PAVEMENT WIDENING
 - 4" CONCRETE SIDEWALK
 - 6" CONC. CURB RAMP / DRIVEWAY
 - PAVERS
 - TREE WELL: 7'X10', 6'X8', OR 4'X3' (TYP.)

REVISIONS	
DATE	DESCRIPTION

KAREN E. FALKENBERRY, P.E.
 P.E. LICENSE NUMBER 54015
 JACOBS ENGINEERING GROUP, INC.
 200 W. FORSYTH ST., STE 1520
 JACKSONVILLE, FL 32202



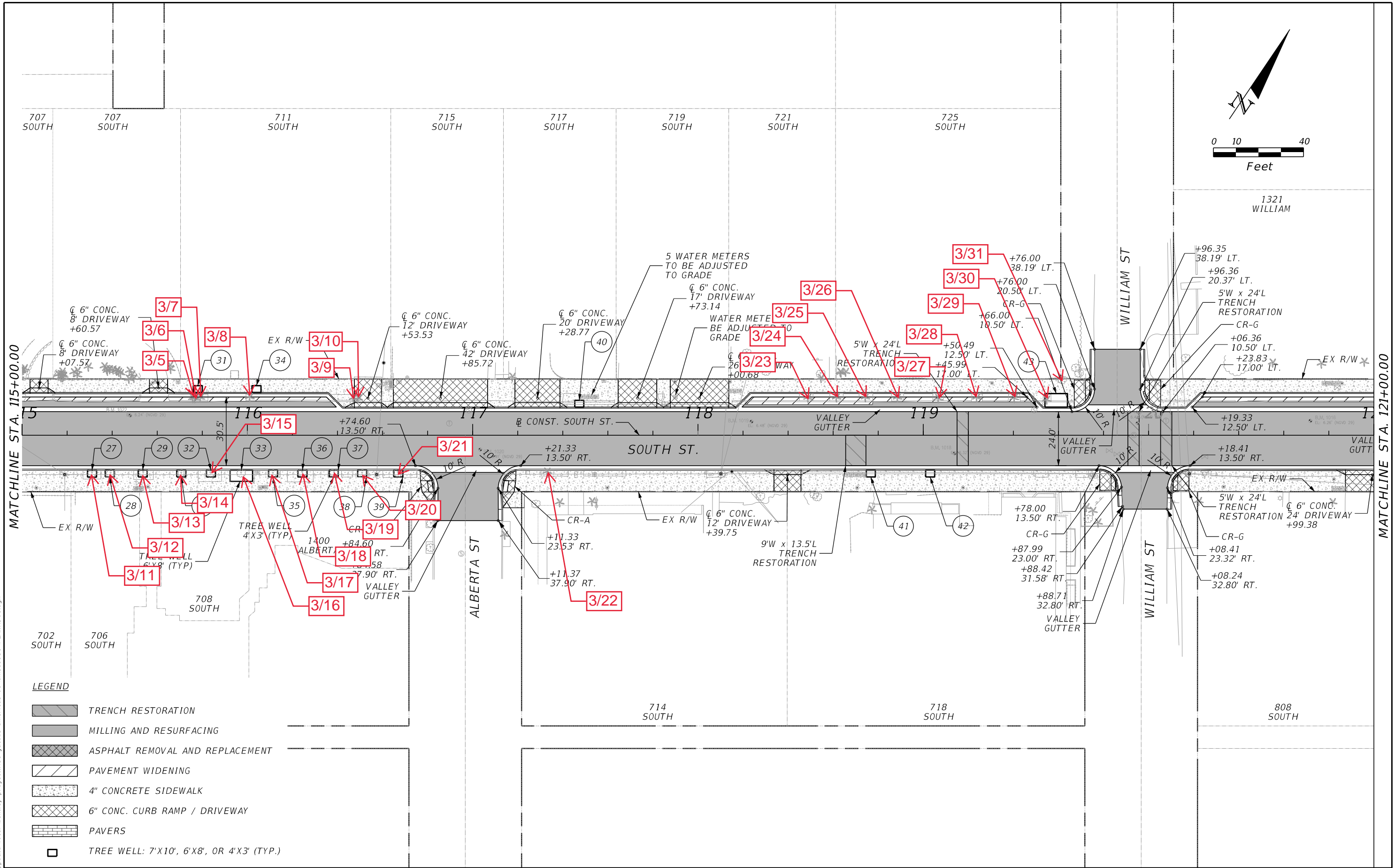
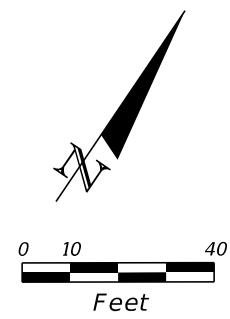
TASK ORDER 9-22
 PROJECT:
 SOUTH STREET IMPROVEMENTS

ROADWAY PLAN (2)

SHEET NO.
 12

11/16/2023 8:57:04 AM Karen.Falkenberry@jacobs.com c:\users\kfalkenb\appdata\local\bentley\projectwise\jacobs-america-01\dms89931\PLANRD01.dgn

THE OFFICIAL RECORD OF THIS SHEET IS THE ELECTRONIC FILE DIGITALLY SIGNED AND SEALED UNDER RULE 61G15-23.004, F.A.C.



11/16/2023 8:57:29 AM Karen.Falkenberry@jacobs.com c:\users\kfalkenb\appdata\local\bentley\projectwise\jacobs-america-01\dms89931\PLANRD01.dgn

THE OFFICIAL RECORD OF THIS SHEET IS THE ELECTRONIC FILE DIGITALLY SIGNED AND SEALED UNDER RULE 61G15-23.004, F.A.C.

LEGEND

	TRENCH RESTORATION
	MILLING AND RESURFACING
	ASPHALT REMOVAL AND REPLACEMENT
	PAVEMENT WIDENING
	4" CONCRETE SIDEWALK
	6" CONC. CURB RAMP / DRIVEWAY
	PAVERS
	TREE WELL: 7'X10', 6'X8', OR 4'X3' (TYP.)

REVISIONS			
DATE	DESCRIPTION	DATE	DESCRIPTION

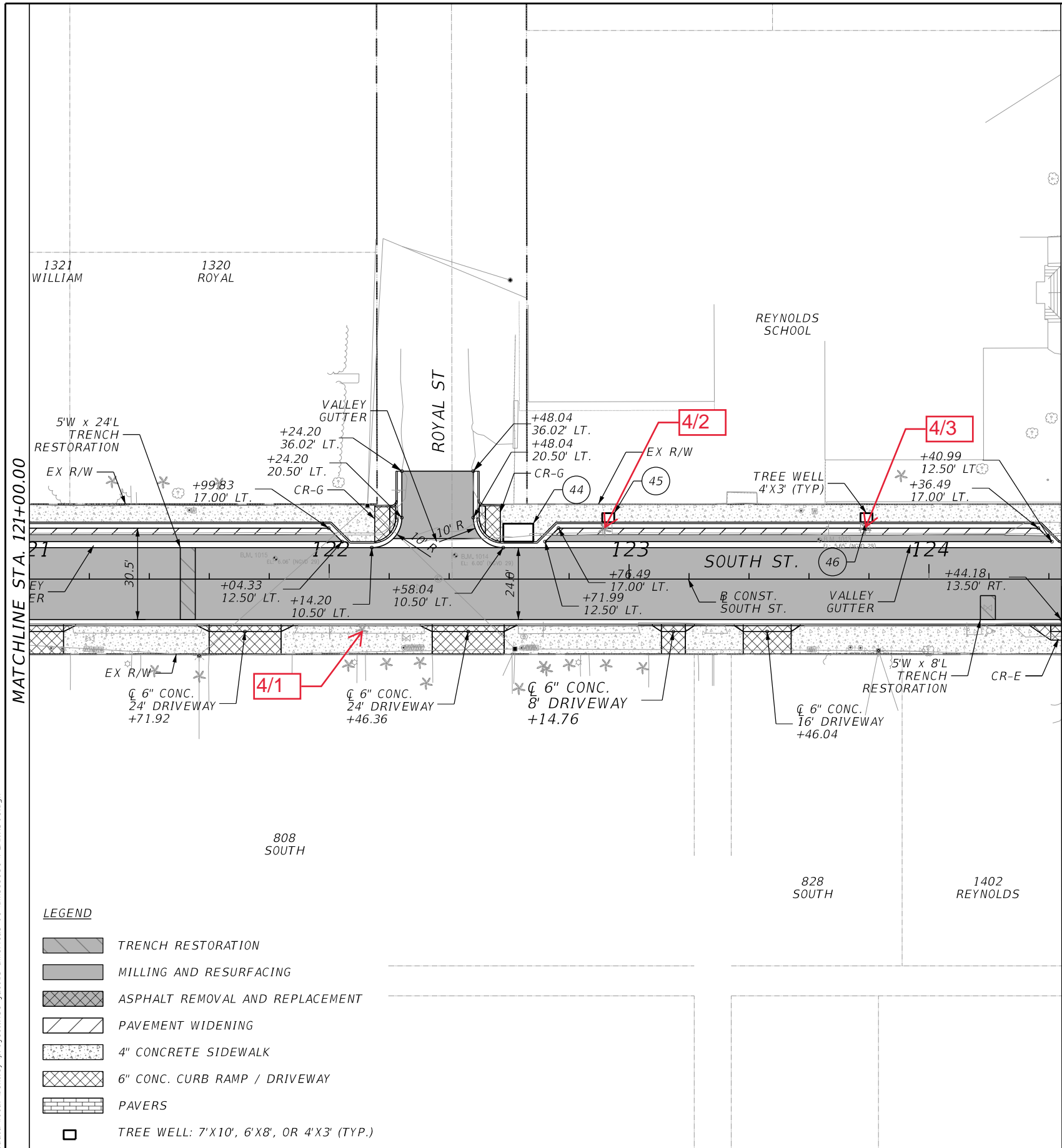
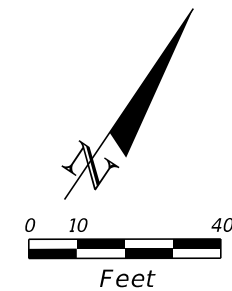
KAREN E. FALKENBERRY, P.E.
 P.E. LICENSE NUMBER 54015
 JACOBS ENGINEERING GROUP, INC.
 200 W. FORSYTH ST., STE 1520
 JACKSONVILLE, FL 32202



TASK ORDER 9-22
 PROJECT:
 SOUTH STREET IMPROVEMENTS

ROADWAY PLAN (3)

SHEET NO.
 13



MATCHLINE STA. 121+00.00

MATCHLINE STA. 124+44.18

- LEGEND**
- TRENCH RESTORATION
 - MILLING AND RESURFACING
 - ASPHALT REMOVAL AND REPLACEMENT
 - PAVEMENT WIDENING
 - 4" CONCRETE SIDEWALK
 - 6" CONC. CURB RAMP / DRIVEWAY
 - PAVERS
 - TREE WELL: 7'X10', 6'X8', OR 4'X3' (TYP.)

REVISIONS			
DATE	DESCRIPTION	DATE	DESCRIPTION

KAREN E. FALKENBERRY, P.E.
 P.E. LICENSE NUMBER 54015
 JACOBS ENGINEERING GROUP, INC.
 200 W. FORSYTH ST., STE 1520
 JACKSONVILLE, FL 32202



TASK ORDER 9-22

PROJECT:
SOUTH STREET IMPROVEMENTS

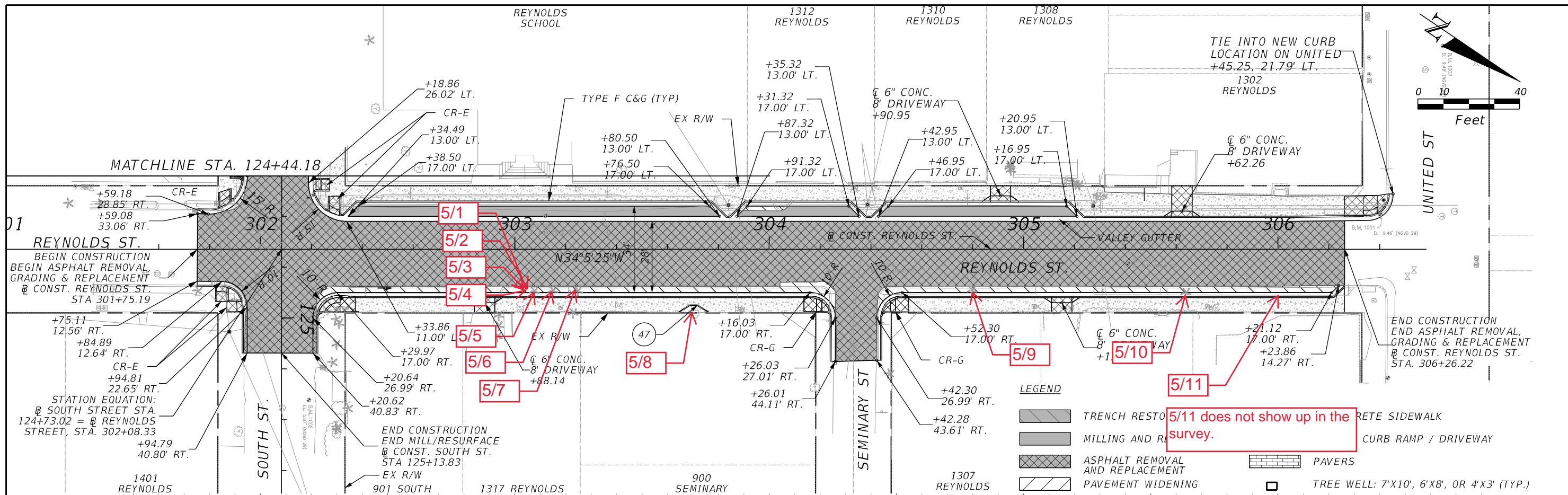
ROADWAY PLAN (4)

SHEET
NO.

14

11/16/2023 8:57:55 AM Karen.Falkenberry@jacobs.com c:\users\kfalkenb\appdata\local\bentley\projectwise\jacobs-americas-01\dms89931\PLANRD01.dgn

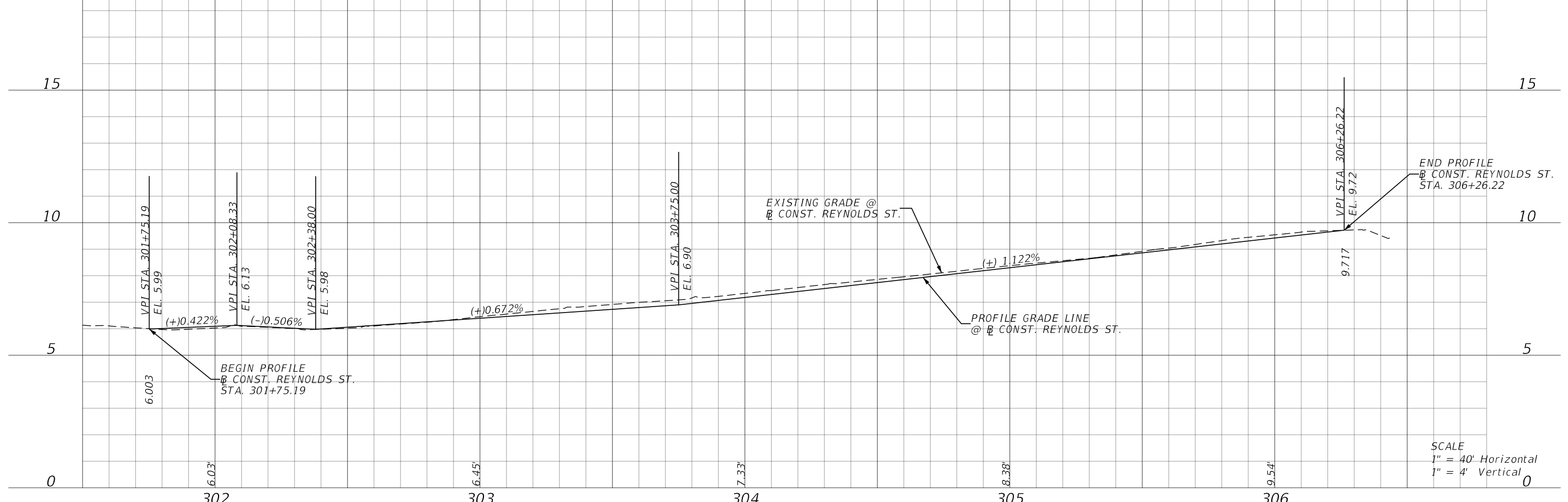
THE OFFICIAL RECORD OF THIS SHEET IS THE ELECTRONIC FILE DIGITALLY SIGNED AND SEALED UNDER RULE 61G15-23.004, F.A.C.



5/11 does not show up in the survey.

LEGEND

	TRENCH RESTORATION		CONCRETE SIDEWALK
	MILLING AND REPLACEMENT		CURB RAMP / DRIVEWAY
	ASPHALT REMOVAL AND REPLACEMENT		PAVERS
	PAVEMENT WIDENING		TREE WELL: 7'X10', 6'X8', OR 4'X3' (TYP.)



SCALE
1" = 40' Horizontal
1" = 4' Vertical

REVISIONS				KAREN E. FALKENBERRY, P.E. P.E. LICENSE NUMBER 54015 JACOBS ENGINEERING GROUP, INC. 200 W. FORSYTH ST., STE 1520 JACKSONVILLE, FL 32202		TASK ORDER 9-22	PROJECT: SOUTH STREET IMPROVEMENTS	SHEET NO. 15
DATE	DESCRIPTION	DATE	DESCRIPTION					

THE OFFICIAL RECORD OF THIS SHEET IS THE ELECTRONIC FILE DIGITALLY SIGNED AND SEALED UNDER RULE 61G15-23.004, F.A.C.