

REVISIONS			
DATE	DESCRIPTION	DATE	DESCRIPTION

KCA
KISINGER CAMPO & ASSOCIATES

201 N. Franklin Street, Suite 400
Tampa, Florida 33602
Florida Certificate of Authorization No. 02317
EOR: Deborah Hernandez-Cedeno
P.E. No.: 74754

**GARRISON BIGHT BRIDGE REPAIR
BRIDGE #904025
FPID: 431918-1-38-01**

MONROE COUNTY
ENGINEERING SERVICES DEPARTMENT

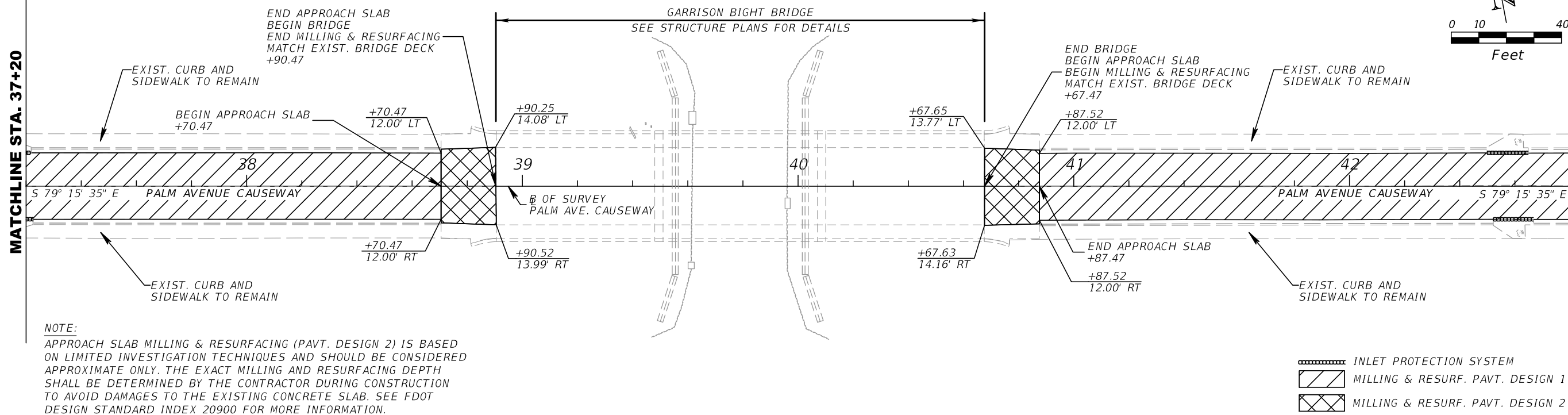
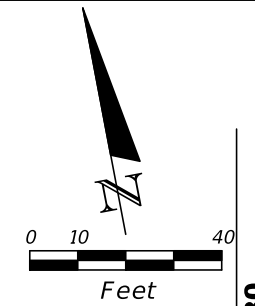
**ROADWAY AND PAVT.
MARKINGS PLANS (1)**

SHEET NO.
5

THE OFFICIAL RECORD OF THIS SHEET IS THE ELECTRONIC FILE DIGITALLY SIGNED AND SEALED UNDER RULE 61G15-23.004, F.A.C.

MATCHLINE STA. 37+20

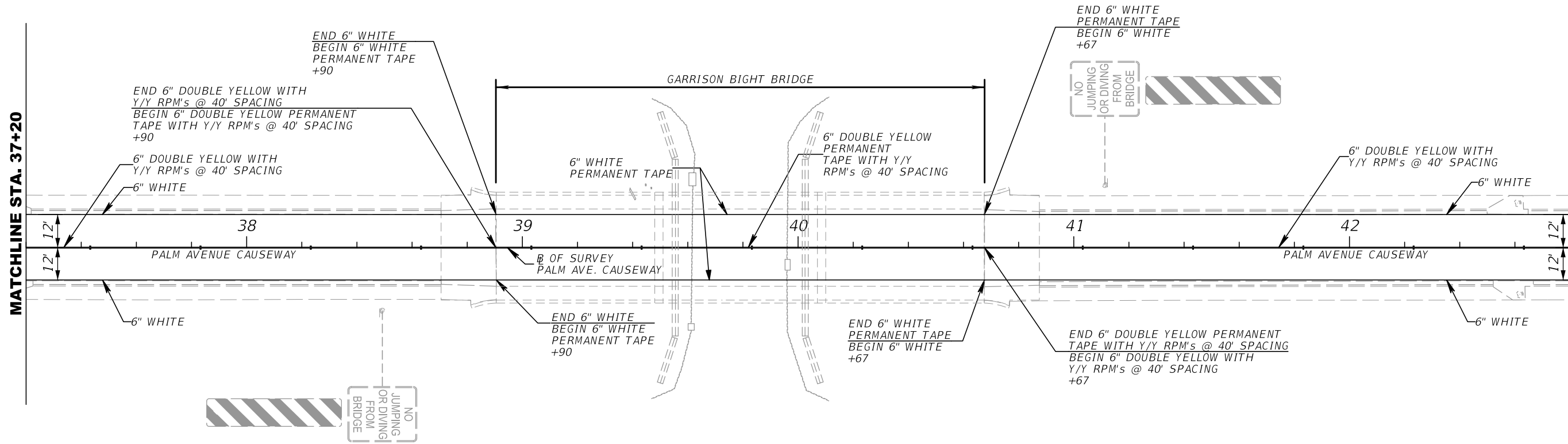
MATCHLINE STA. 42+80



NOTE:
 APPROACH SLAB MILLING & RESURFACING (PAVT. DESIGN 2) IS BASED ON LIMITED INVESTIGATION TECHNIQUES AND SHOULD BE CONSIDERED APPROXIMATE ONLY. THE EXACT MILLING AND RESURFACING DEPTH SHALL BE DETERMINED BY THE CONTRACTOR DURING CONSTRUCTION TO AVOID DAMAGES TO THE EXISTING CONCRETE SLAB. SEE FDOT DESIGN STANDARD INDEX 20900 FOR MORE INFORMATION.

MATCHLINE STA. 37+20

MATCHLINE STA. 42+80



REVISIONS			
DATE	DESCRIPTION	DATE	DESCRIPTION

KCA
 KISINGER CAMPO & ASSOCIATES
 201 N. Franklin Street, Suite 400
 Tampa, Florida 33602
 Florida Certificate of Authorization No. 02317
 EOR: Deborah Hernandez-Cedeno
 P.E. No.: 74754

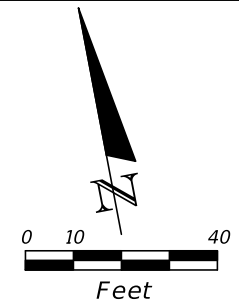


GARRISON BIGHT BRIDGE REPAIR
BRIDGE #904025
FPID: 431918-1-38-01
 MONROE COUNTY
 ENGINEERING SERVICES DEPARTMENT

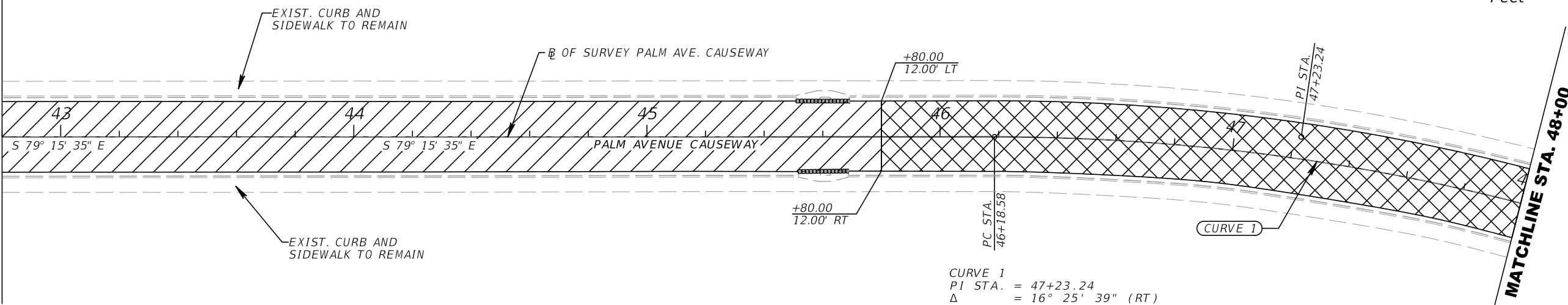
ROADWAY AND PAVT. MARKINGS PLANS (2)

SHEET NO.
 6

THE OFFICIAL RECORD OF THIS SHEET IS THE ELECTRONIC FILE DIGITALLY SIGNED AND SEALED UNDER RULE 61G15-23.004, F.A.C.



MATCHLINE STA. 42+80

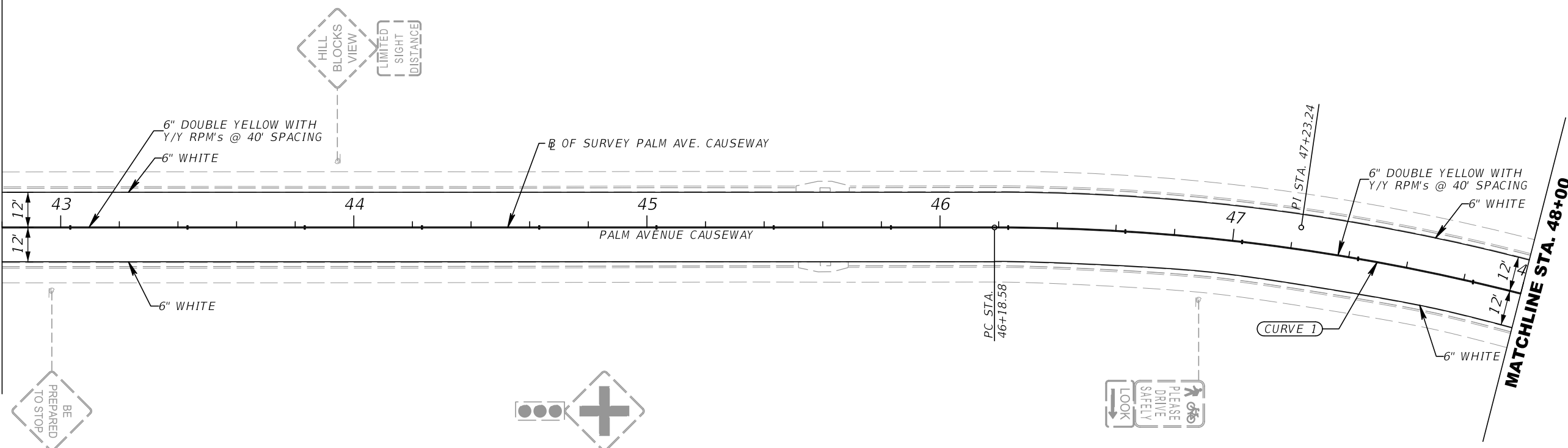


MATCHLINE STA. 48+00

CURVE 1
 PI STA. = 47+23.24
 Δ = 16° 25' 39" (RT)
 D = 7° 54' 10"
 T = 104.65
 L = 207.87
 R = 725.00
 PC STA. = 46+18.58
 PT STA. = 48+26.45

- INLET PROTECTION SYSTEM
- MILLING & RESURF. PAVT. DESIGN 1
- MILLING & RESURF. PAVT. DESIGN 2

MATCHLINE STA. 42+80



MATCHLINE STA. 48+00

REVISIONS			
DATE	DESCRIPTION	DATE	DESCRIPTION

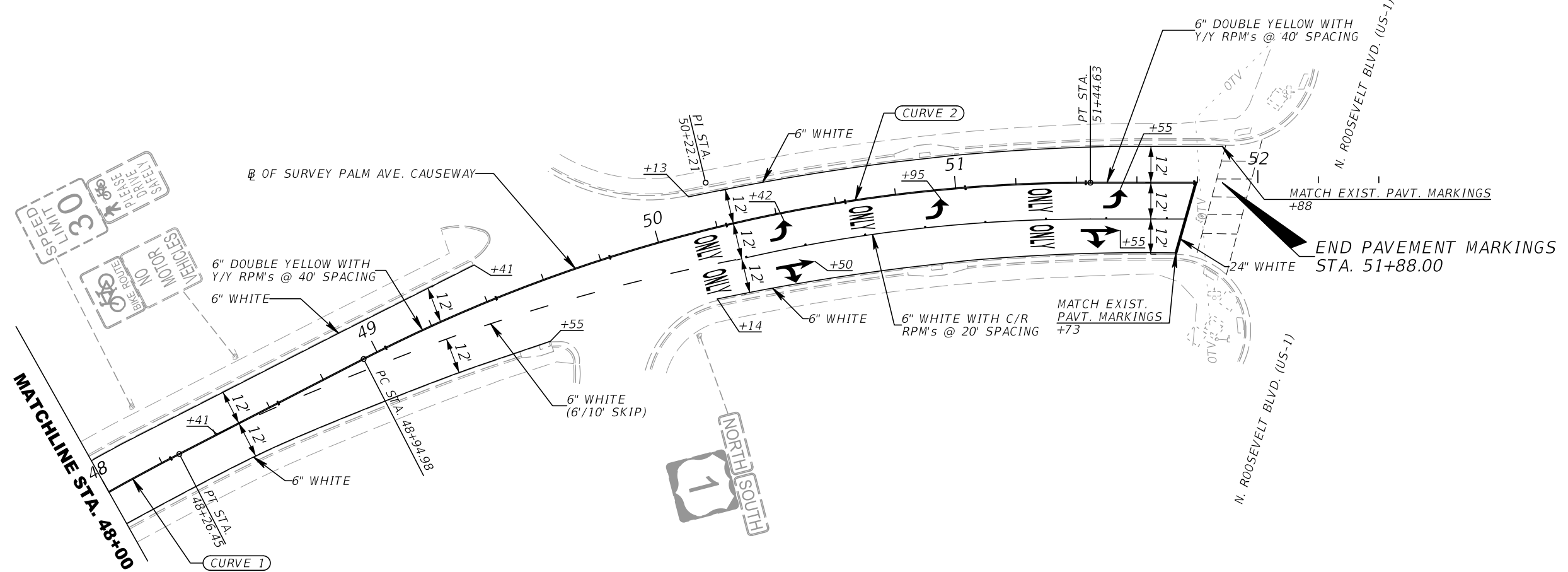
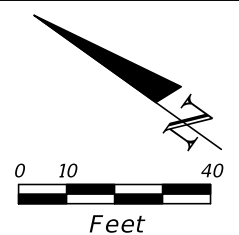
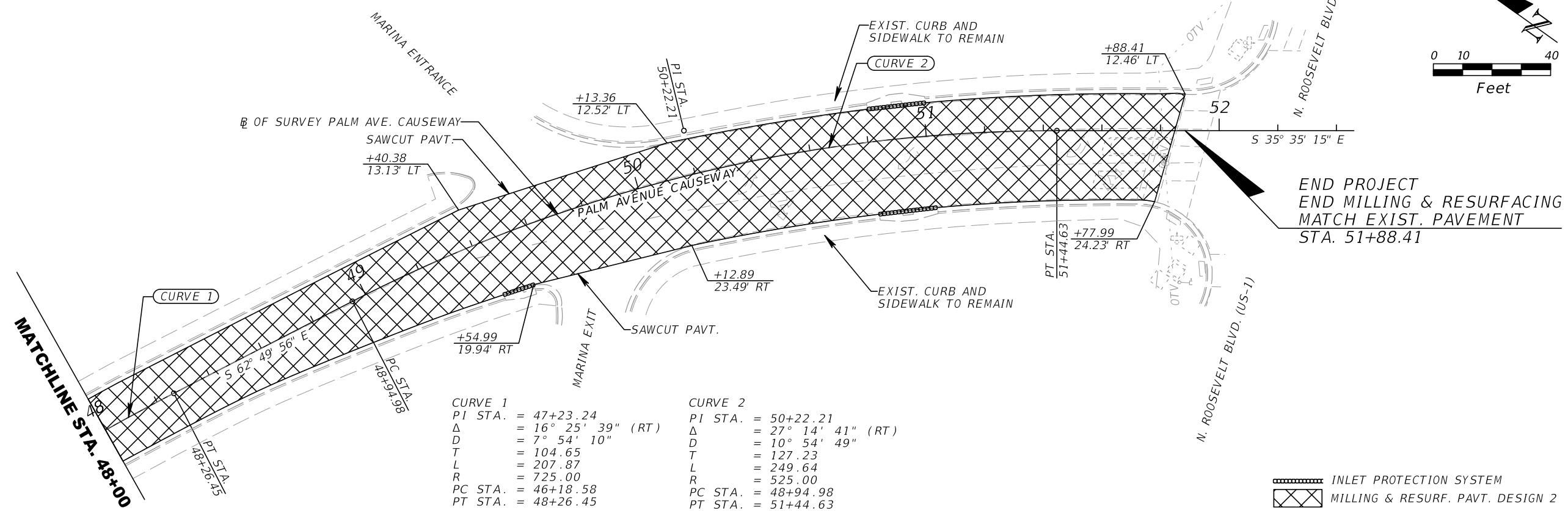
KCA
 KISINGER CAMPO & ASSOCIATES
 201 N. Franklin Street, Suite 400
 Tampa, Florida 33602
 Florida Certificate of Authorization No. 02317
 EOR: Deborah Hernandez-Cedeno
 P.E. No.: 74754

GARRISON BIGHT BRIDGE REPAIR
BRIDGE #904025
FPID: 431918-1-38-01
 MONROE COUNTY
 ENGINEERING SERVICES DEPARTMENT

ROADWAY AND PAVT. MARKINGS PLANS (3)

SHEET NO.
7

THE OFFICIAL RECORD OF THIS SHEET IS THE ELECTRONIC FILE DIGITALLY SIGNED AND SEALED UNDER RULE 61G15-23.004, F.A.C.



REVISIONS			
DATE	DESCRIPTION	DATE	DESCRIPTION

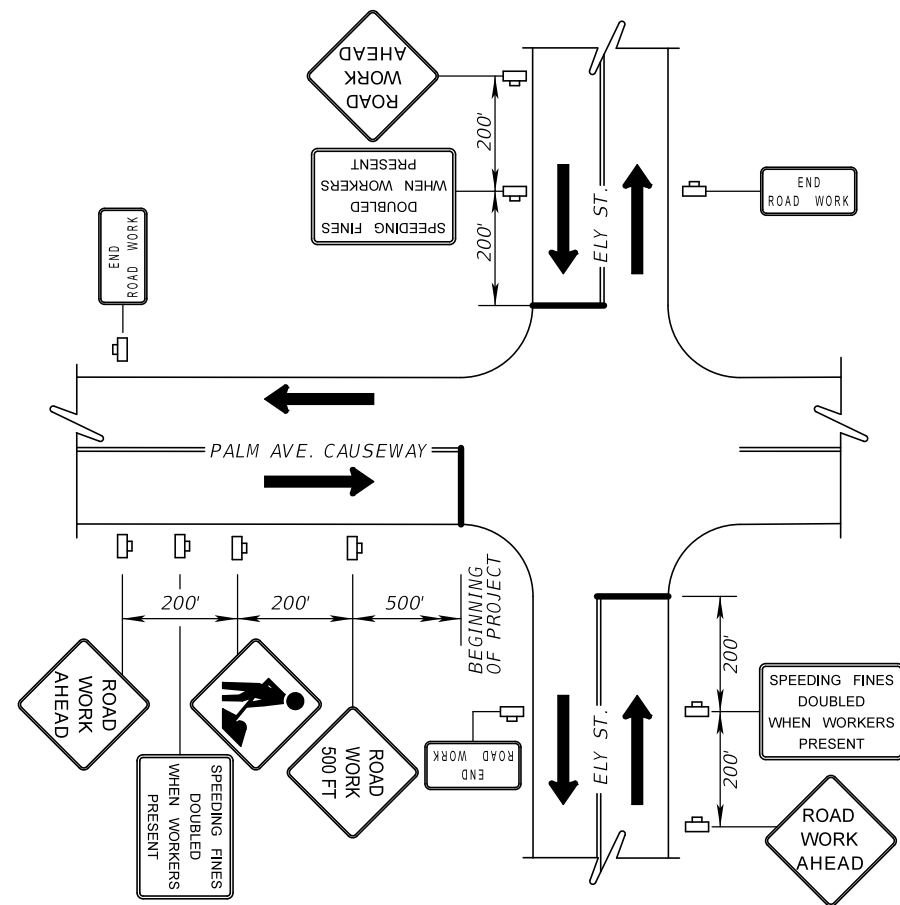
KCA
 KISINGER CAMPO & ASSOCIATES
 201 N. Franklin Street, Suite 400
 Tampa, Florida 33602
 Florida Certificate of Authorization No. 02317
 EOR: Deborah Hernandez-Cedeno
 P.E. No.: 74754

GARRISON BIGHT BRIDGE REPAIR
BRIDGE #904025
FPID: 431918-1-38-01
 MONROE COUNTY
 ENGINEERING SERVICES DEPARTMENT

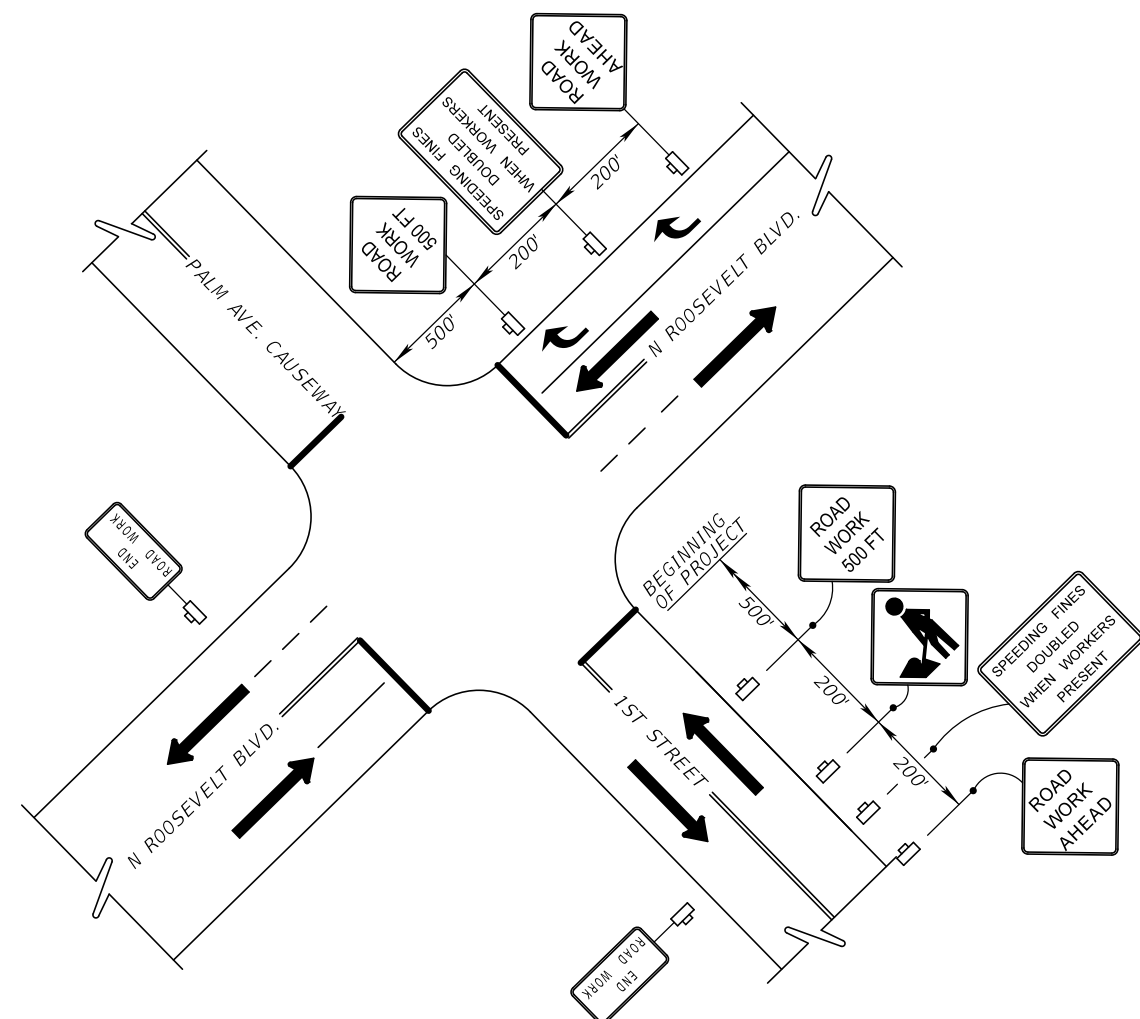
ROADWAY AND PAVT. MARKINGS PLANS (4)

SHEET NO. 8

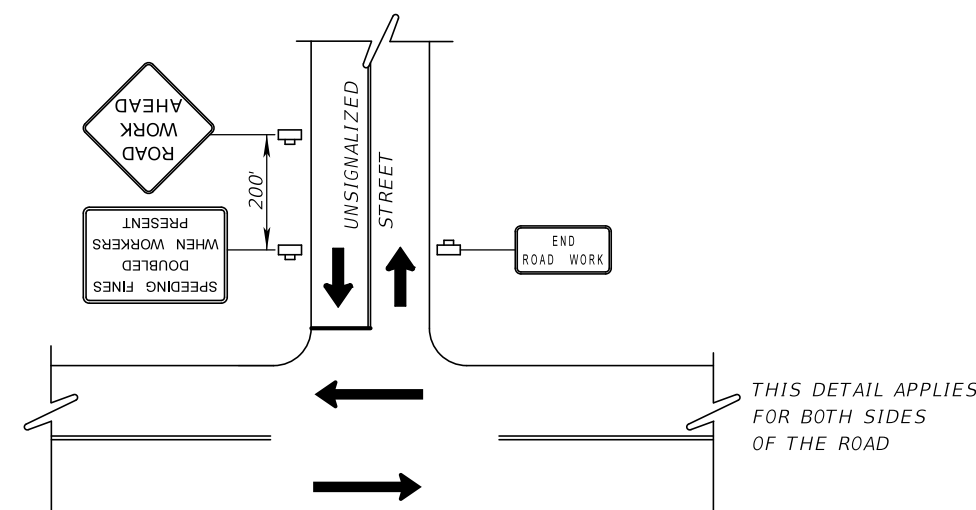
THE OFFICIAL RECORD OF THIS SHEET IS THE ELECTRONIC FILE DIGITALLY SIGNED AND SEALED UNDER RULE 61G15-23.004, F.A.C.



BEGINNING OF PROJECT ADVANCED WARNINGS



END OF PROJECT ADVANCED WARNINGS



THIS DETAIL APPLIES FOR BOTH SIDES OF THE ROAD

- UNSIGNALIZED INTERSECTIONS:
 * EISENHOWER DRIVE
 * MARINA EXITS

TEMPORARY TRAFFIC CONTROL ADVANCED WARNING LAYOUT
 NTS

LEGEND	
↑	Lane Identification and Direction of Traffic
☐	Work Zone Sign

REVISIONS			
DATE	DESCRIPTION	DATE	DESCRIPTION

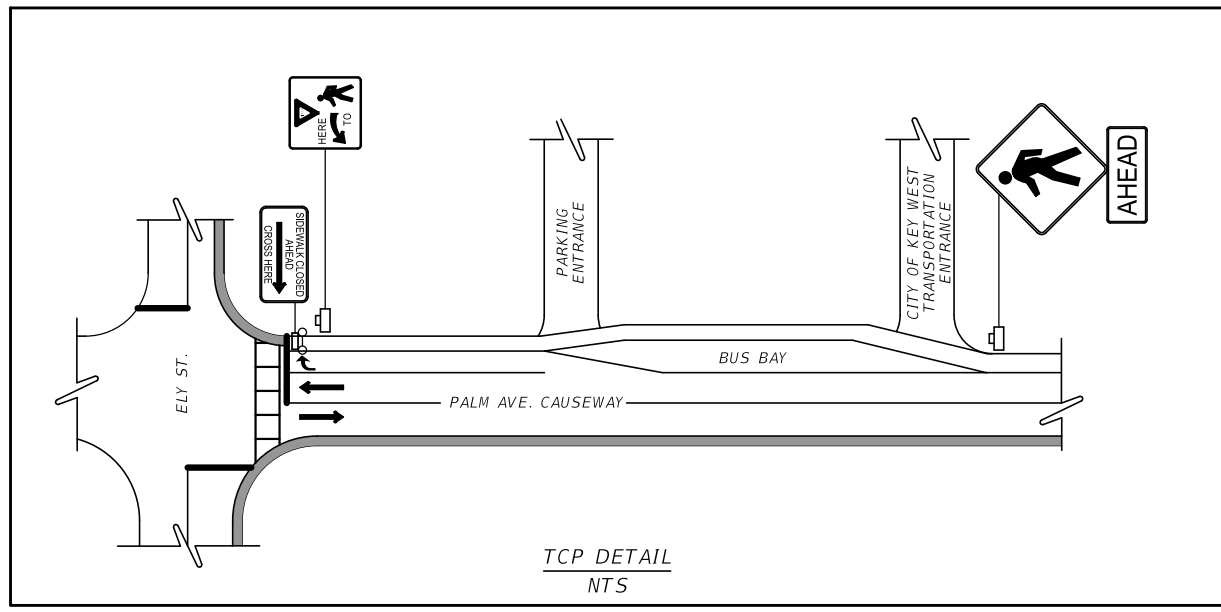
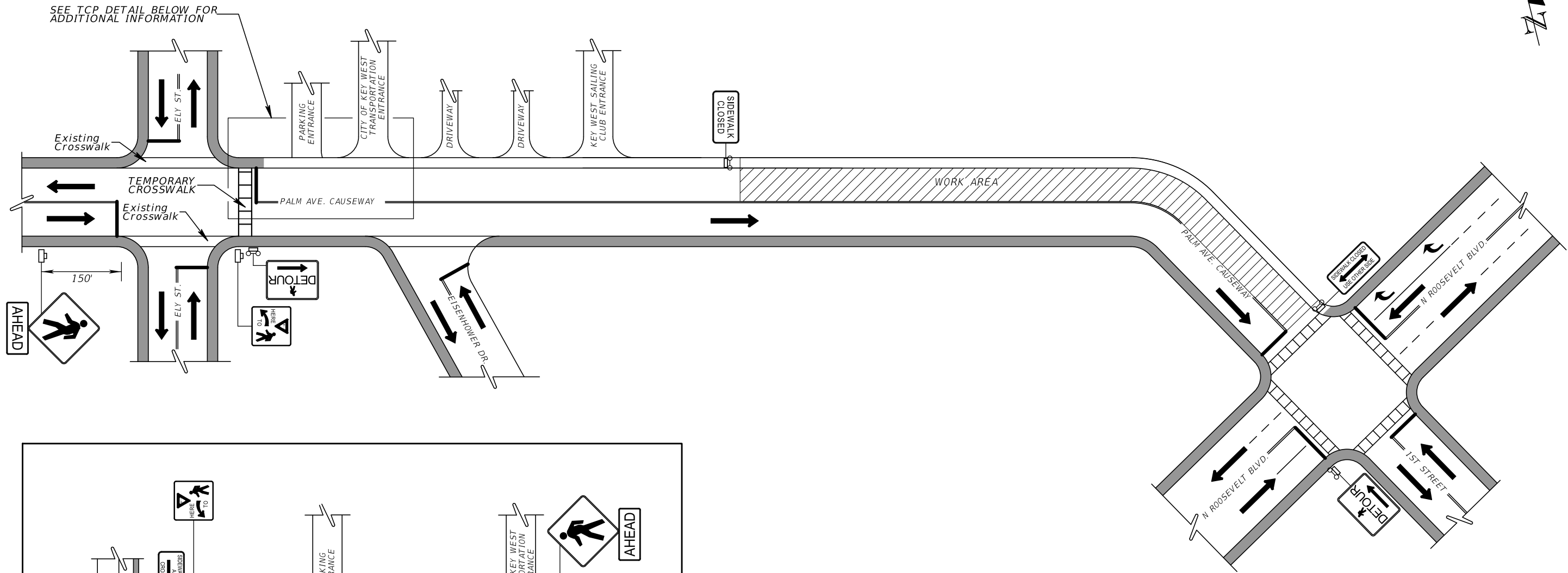
KCA
 KISINGER CAMPO & ASSOCIATES
 201 N. Franklin Street, Suite 400
 Tampa, Florida 33602
 Florida Certificate of Authorization No. 02317
 EOR: Deborah Hernandez-Cedeno
 P.E. No.: 74754

**GARRISON BIGHT BRIDGE REPAIR
 BRIDGE #904025
 FPID: 431918-1-38-01**
 MONROE COUNTY
 ENGINEERING SERVICES DEPARTMENT

**TEMPORARY TCP
 ADVANCE WARNING LAYOUT**

SHEET NO.	10
-----------	----

THE OFFICIAL RECORD OF THIS SHEET IS THE ELECTRONIC FILE DIGITALLY SIGNED AND SEALED UNDER RULE 61G15-23.004, F.A.C.



NOTE: SEE TEMPORARY TCP EASTBOUND LANE CLOSURE FOR MORE DETAILS

LEGEND	
↑	Lane Identification and Direction of Traffic
▬	Available walkway
⊞	Pedestrian Longitudinal Channelizing Device with Mounted Work Zone Sign
⊞	Work Zone Sign

TEMPORARY PEDESTRIAN CONTROL LAYOUT (WESTBOUND LANE CLOSED)
NTS

REVISIONS			
DATE	DESCRIPTION	DATE	DESCRIPTION

KCA
KISINGER CAMPO & ASSOCIATES
201 N. Franklin Street, Suite 400
Tampa, Florida 33602
Florida Certificate of Authorization No. 02317
EOR: Deborah Hernandez-Cedeno
P.E. No.: 74754

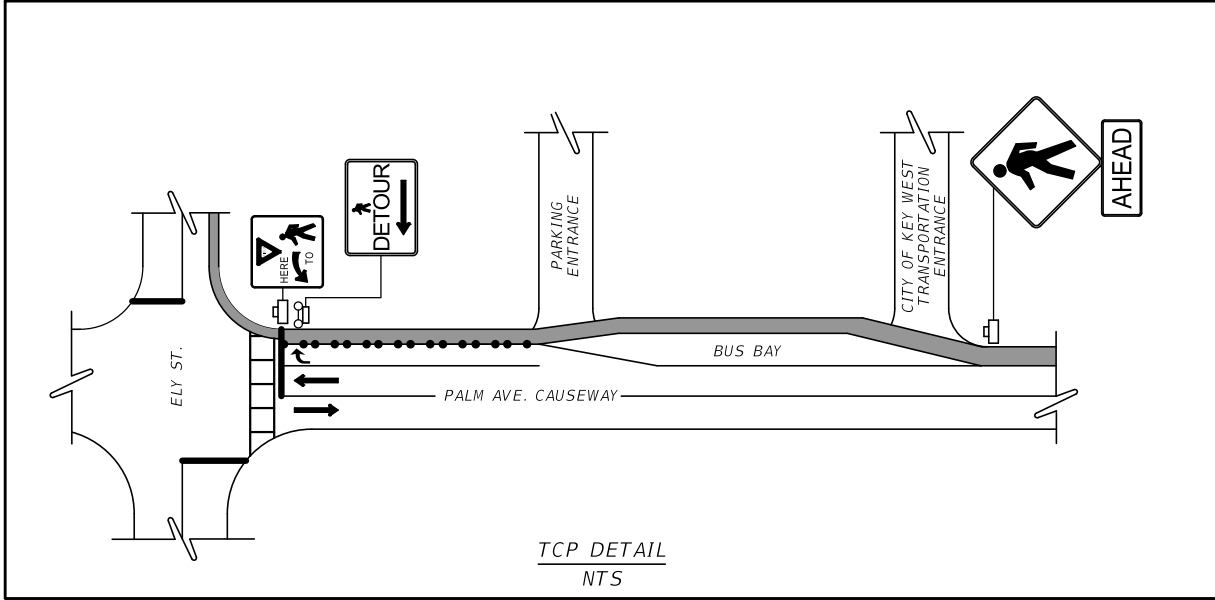
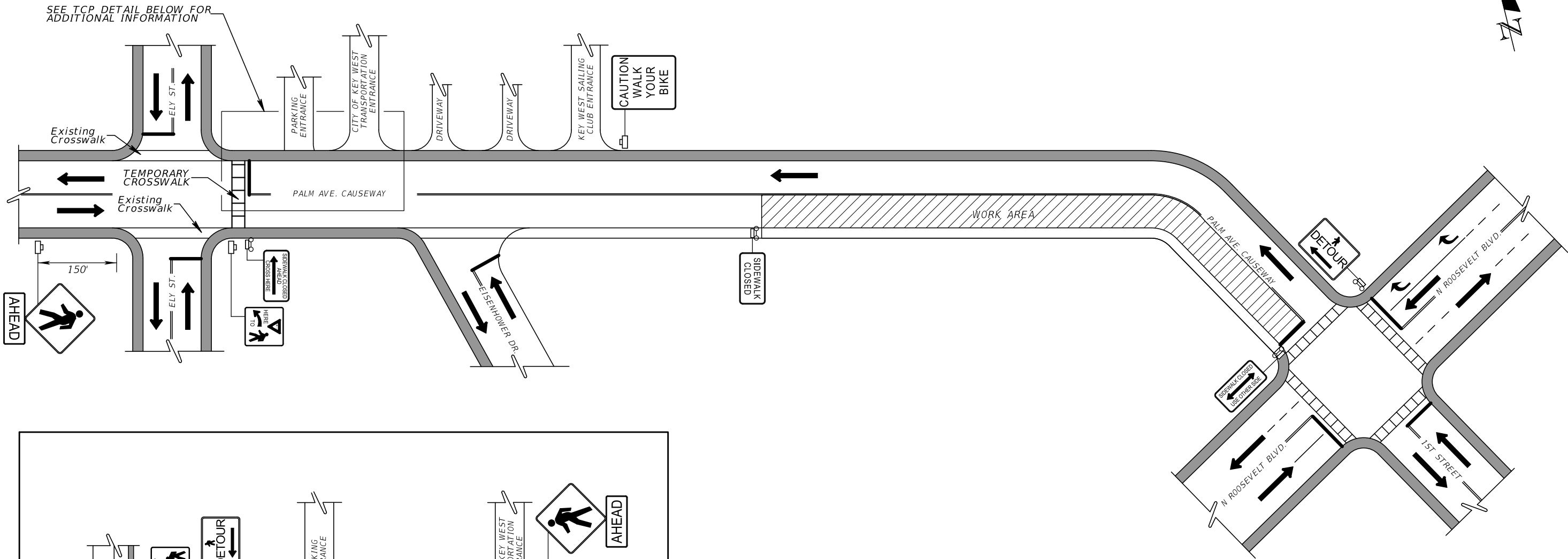


**GARRISON BIGHT BRIDGE REPAIR
BRIDGE #904025
FPID: 431918-1-38-01**
MONROE COUNTY
ENGINEERING SERVICES DEPARTMENT

**TEMPORARY TCP
PEDESTRIAN CONTROL (1)**

SHEET NO.	11
-----------	----

THE OFFICIAL RECORD OF THIS SHEET IS THE ELECTRONIC FILE DIGITALLY SIGNED AND SEALED UNDER RULE 61G15-23.004, F.A.C.



TEMPORARY PEDESTRIAN CONTROL LAYOUT (EASTBOUND LANE CLOSED)
NTS

NOTE: SEE TEMPORARY TCP WESTBOUND LANE CLOSURE FOR MORE DETAILS

LEGEND	
	Lane Identification and Direction of Traffic
	Available walkway
	Pedestrian Longitudinal Channelizing Device with Mounted Work Zone Sign
	Pedestrian Longitudinal Channelizing Device (LCD)
	Work Zone Sign

REVISIONS			
DATE	DESCRIPTION	DATE	DESCRIPTION

KCA
KISINGER CAMPO & ASSOCIATES

201 N. Franklin Street, Suite 400
Tampa, Florida 33602
Florida Certificate of Authorization No. 02317
EOR: Deborah Hernandez-Cedeno
P.E. No.: 74754



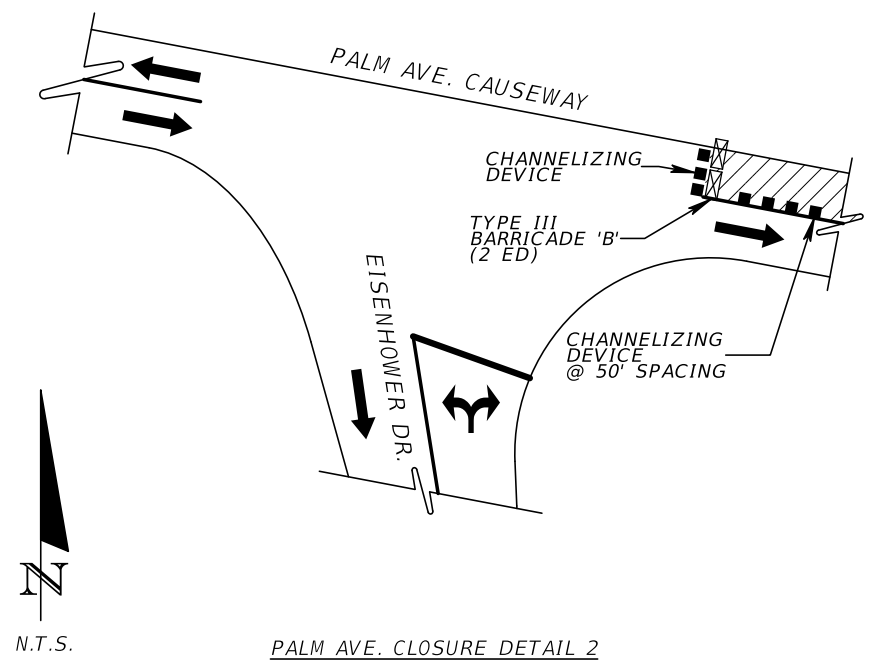
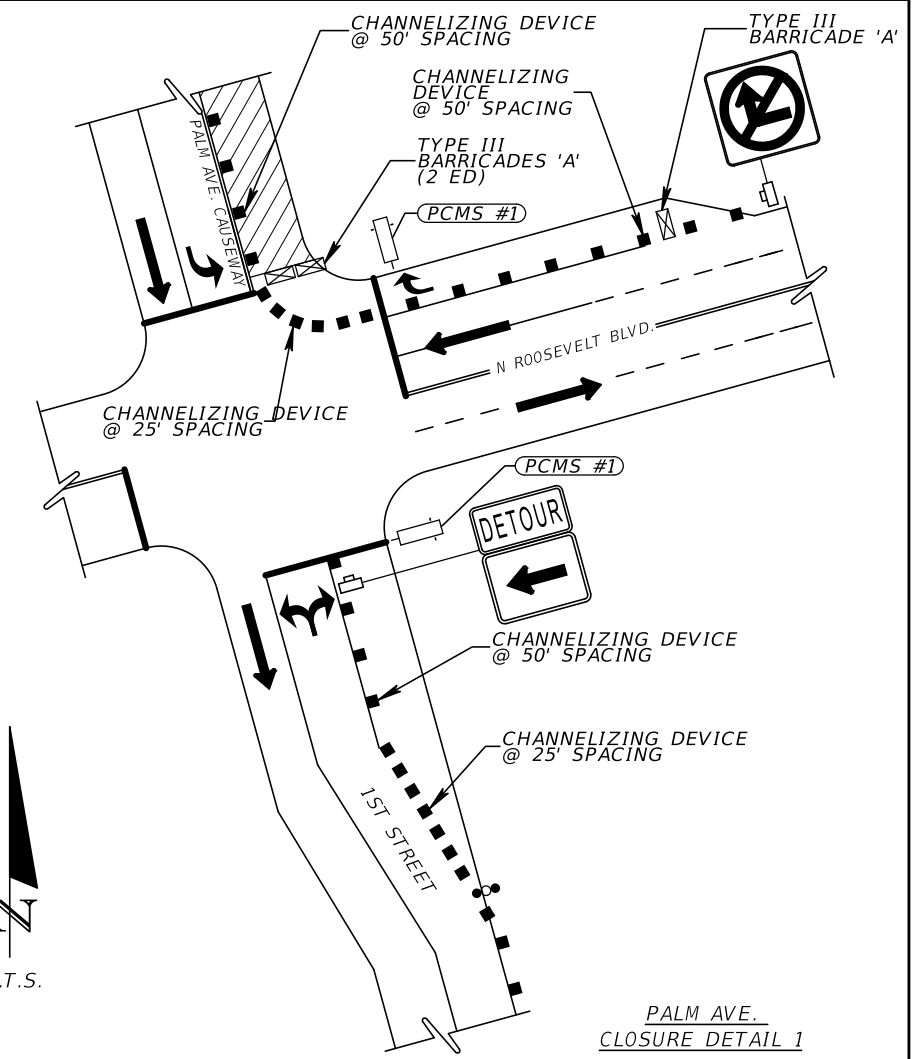
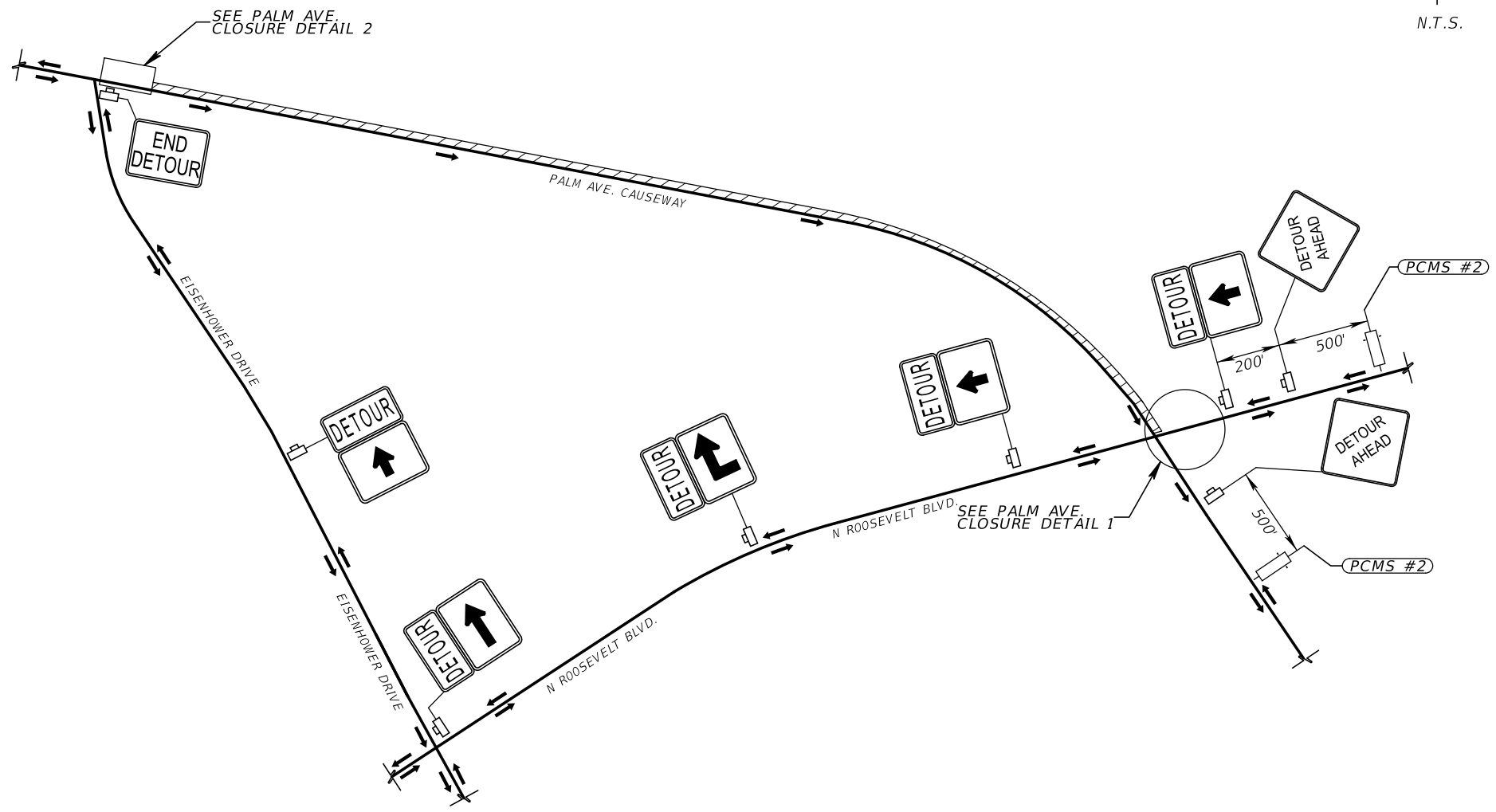
**GARRISON BIGHT BRIDGE REPAIR
BRIDGE #904025
FPID: 431918-1-38-01**

MONROE COUNTY
ENGINEERING SERVICES DEPARTMENT

**TEMPORARY TCP
PEDESTRIAN CONTROL (2)**

SHEET NO.	12
-----------	----

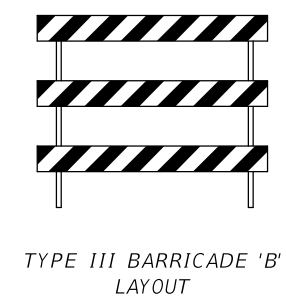
THE OFFICIAL RECORD OF THIS SHEET IS THE ELECTRONIC FILE DIGITALLY SIGNED AND SEALED UNDER RULE 61G15-23.004, F.A.C.



LEGEND	
	Lane Identification and Direction of Traffic
	Work Area
	Work Zone Sign
	Channelizing Device (See Index 600)
	Advance Warning Arrow Panel
	Portable Changeable (Variable) Message Sign

PCMS #1 SEVEN DAYS PRIOR TO LANE CLOSURE	

PCMS #2 DURING LANE CLOSURE	



REVISIONS			
DATE	DESCRIPTION	DATE	DESCRIPTION

KCA
KISINGER CAMPO & ASSOCIATES

201 N. Franklin Street, Suite 400
Tampa, Florida 33602
Florida Certificate of Authorization No. 02317
EOR: Deborah Hernandez-Cedeno
P.E. No.: 74754

GARRISON BIGHT BRIDGE REPAIR
BRIDGE #904025
FPID: 431918-1-38-01

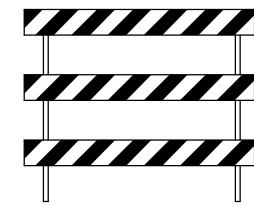
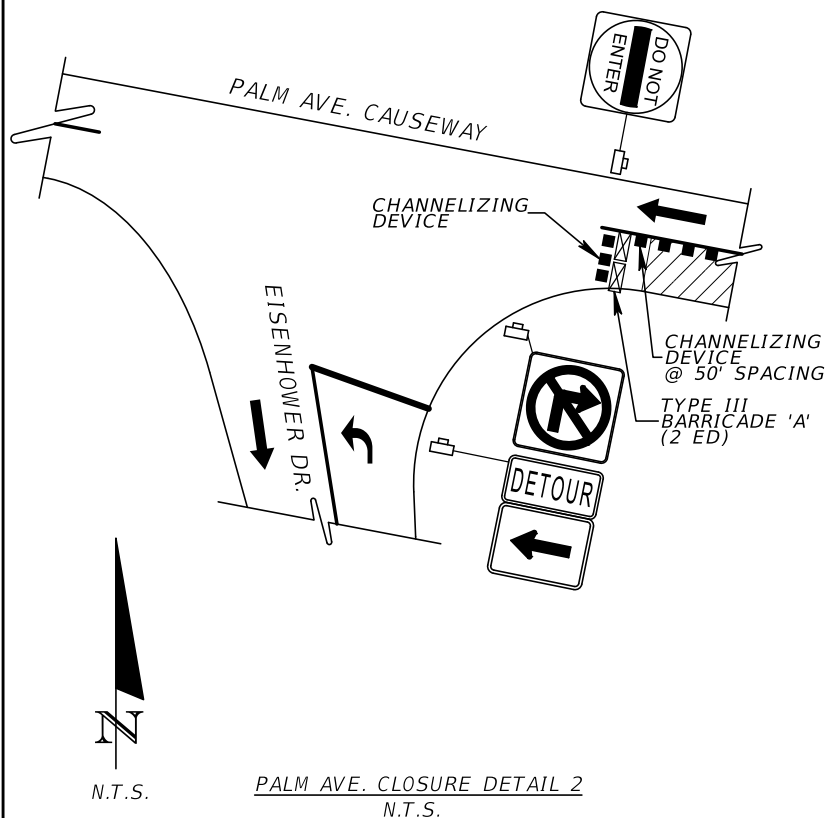
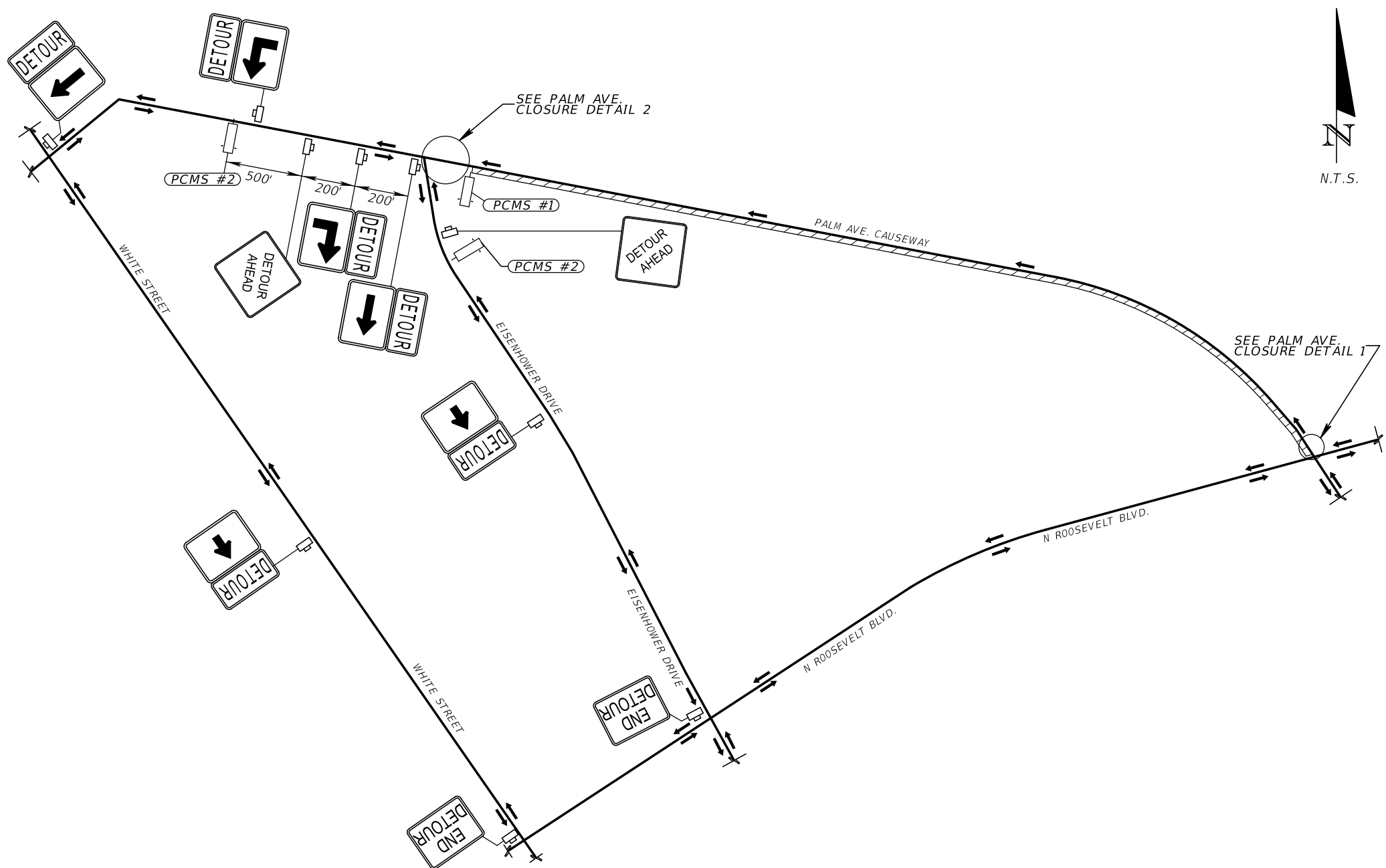
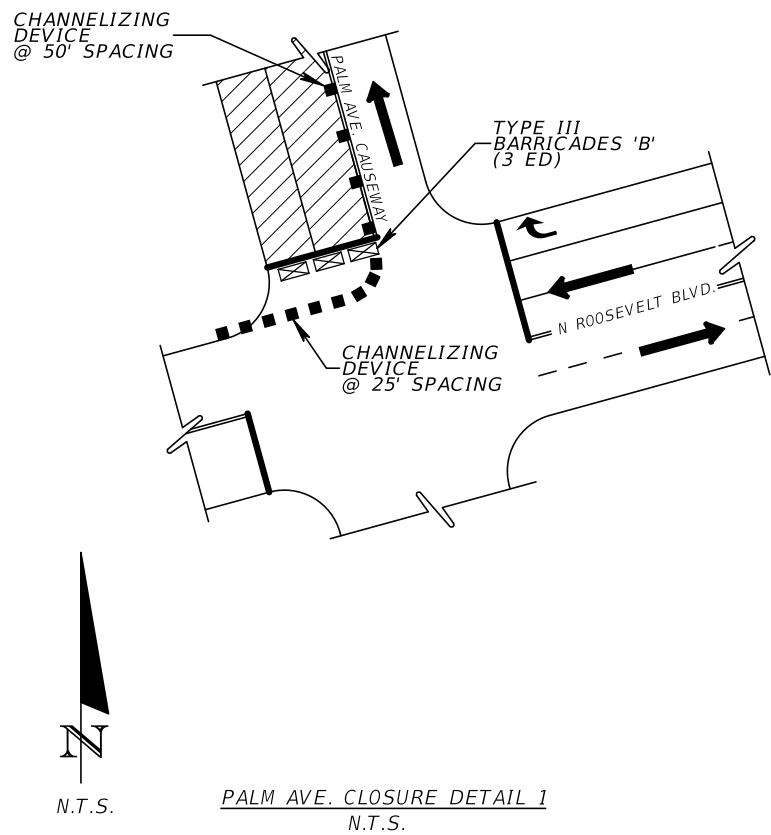
MONROE COUNTY
ENGINEERING SERVICES DEPARTMENT

TEMPORARY TCP
WESTBOUND LANE CLOSURE

SHEET NO.	13
-----------	----

THE OFFICIAL RECORD OF THIS SHEET IS THE ELECTRONIC FILE DIGITALLY SIGNED AND SEALED UNDER RULE 61G15-23.004, F.A.C.





PCMS #1
SEVEN DAYS PRIOR TO LANE CLOSURE



PCMS #2
DURING LANE CLOSURE



LEGEND	
	Lane Identification and Direction of Traffic
	Work Area
	Work Zone Sign
	Channelizing Device (See Index 600)
	Portable Changeable (Variable) Message Sign

REVISIONS			
DATE	DESCRIPTION	DATE	DESCRIPTION

KCA
KISINGER CAMPO & ASSOCIATES

201 N. Franklin Street, Suite 400
Tampa, Florida 33602
Florida Certificate of Authorization No. 02317
EOR: Deborah Hernandez-Cedeno
P.E. No.: 74754



**GARRISON BIGHT BRIDGE REPAIR
BRIDGE #904025
FPID: 431918-1-38-01**

MONROE COUNTY
ENGINEERING SERVICES DEPARTMENT

**TEMPORARY TCP
EASTBOUND LANE CLOSURE**

SHEET NO.

14

THE OFFICIAL RECORD OF THIS SHEET IS THE ELECTRONIC FILE DIGITALLY SIGNED AND SEALED UNDER RULE 61G15-23.004, F.A.C.