



BERMELLO AJAMIL & PARTNERS • INC

Architecture • Engineering • Planning
Interior Design • Landscape Architecture
2601 South Baysshore Drive
Suite 1000
Miami, Florida 33133
(305) 859-2050
Fax (305) 860-3700

PREPARED FOR/OWNER:
CITY OF KEY WEST, FL
P. O. BOX 1409
3140 FLAGLER AVENUE
KEY WEST, FL 33041

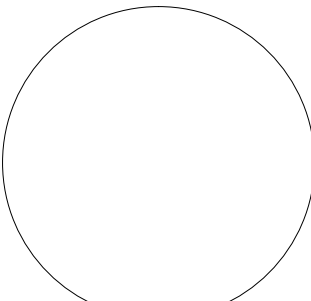


PROJECT NAME:
TRUMAN WATERFRONT PARK

PROJECT LOCATION/ADDRESS:
TRUMAN WATERFRONT PARK
WEST OF FORT STREET AND THE
TRUMAN ANNEX DEVELOPMENT,
NORTH OF KEY WEST NAVAL BASE

SUB-CONSULTANT INFORMATION:

PROFESSIONAL SEAL:



KIRK J. OLNEY
FLORIDA REGISTERED LANDSCAPE
LA0001705

SUBMITTAL DESCRIPTION / MILESTONE:

DEVELOPMENT APPLICATION
March 3, 2014

REVISIONS:

DRAWING SHEET INFORMATION

BA PROJECT NO.: 12010
SCALE: 1" = 100'-0"
DATE: February 12, 2014
DRAWN BY: KJO
CHECKED BY: RPH
CADD FILE: X:\Truman Waterfront Base.dwg

DRAWING TITLE:
TREE DISPOSITION KEY SHEET
SHEET NO.

LT-00

TREE PROTECTION AND RELOCATION NOTES:

1. EVERY EFFORT HAS BEEN MADE TO PRESERVE OR RELOCATE EXISTING TREES.
2. SPECIMEN TREES WILL BE PRESERVED PER CHAPTER 110, ARTICLE VI, DIVISION 1, SECTION 110-251 THROUGH SECTION 110-260; CHAPTER 110 ARTICLE VI, DIVISION 4, SECTIONS 110-366 THROUGH SECTION 110-369 AND CHAPTER 108, ARTICLE VI, DIVISION 3 OF THE CITY OF KEY WEST, FLORIDA CODE OF ORDINANCES.
3. MEASURES WILL BE TAKEN DURING CONSTRUCTION TO NEGATE IMPACTS TO THE ROOT SYSTEM OF EXISTING TREES TO BE PROTECTED.
4. TREE RELOCATION WILL BE PERFORMED IN ACCORDANCE WITH CHAPTER 110, ARTICLE VI, DIVISION 3 OF THE CITY OF KEY WEST, FLORIDA CODE OF ORDINANCES.
5. PER CHAPTER 110, ARTICLE VI, DIVISION 1, SECTION 110-254 OF THE CITY OF KEY WEST, FLORIDA CODE OF ORDINANCES, EXISTING TREES THAT ARE CONSIDERED "UNPROTECTED" WILL BE REMOVED WITHOUT RESERVATION OR PERMIT.

SHEET 01

SHEET 02

SHEET 03

SHEET 04

SHEET 05

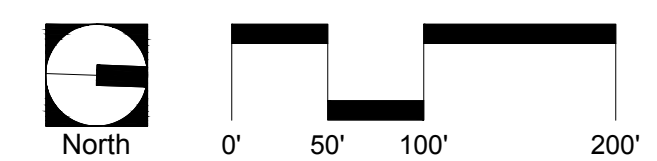
SHEET 06

SHEET 07

SHEET 08

SHEET 09

SHEET 10





BERMELLO AJAMIL & PARTNERS • INC

Architecture • Engineering • Planning
Interior Design • Landscape Architecture
2601 South Bayshore Drive
Suite 1000
Miami, Florida 33133
(305) 859-2050
Fax (305) 860-3700

PREPARED FOR/OWNER:
CITY OF KEY WEST, FL
P. O. BOX 1409
3140 FLAGLER AVENUE
KEY WEST, FL 33041

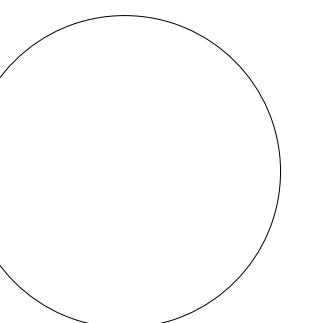


PROJECT NAME:
TRUMAN WATERFRONT PARK

PROJECT LOCATION/ADDRESS:
TRUMAN WATERFRONT PARK
WEST OF FORT STREET AND THE
TRUMAN ANNEX DEVELOPMENT,
NORTH OF KEY WEST NAVAL BASE

SUB-CONSULTANT INFORMATION:

PROFESSIONAL SEAL:



KIRK J. OLNEY
FLORIDA REGISTERED LANDSCAPE
LA0001705

SUBMITTAL DESCRIPTION / MILESTONE:

DEVELOPMENT APPLICATION
March 3, 2014

REVISIONS:

DRAWING SHEET INFORMATION

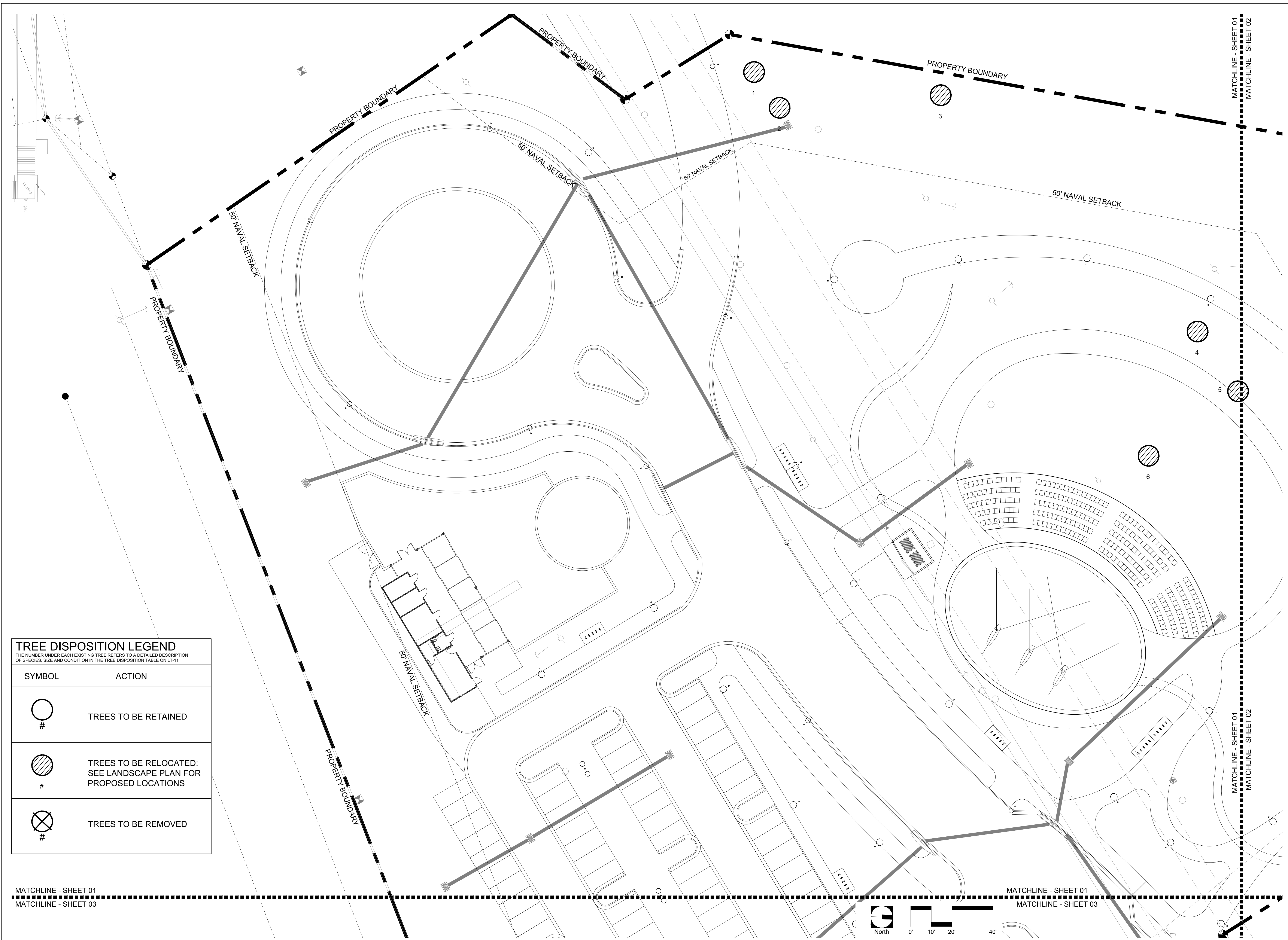
BA PROJECT NO.: 12010
SCALE: 1" = 20'-0"
DATE: February 12, 2014
DRAWN BY: KJO
CHECKED BY: RPH
CADD FILE: X:\Truman Waterfront Base.dwg

DRAWING TITLE:

TREE DISPOSITION PLAN

SHEET NO.

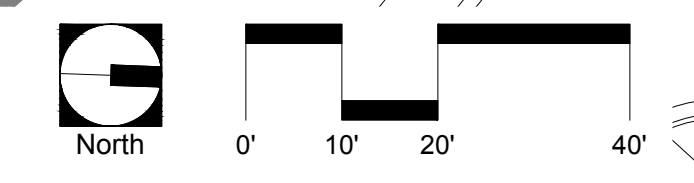
LT-01



TREE DISPOSITION LEGEND
THE NUMBER UNDER EACH EXISTING TREE REFERS TO A DETAILED DESCRIPTION OF SPECIES, SIZE AND CONDITION IN THE TREE DISPOSITION TABLE ON LT-11

SYMBOL	ACTION
○ #	TREES TO BE RETAINED
⊗ #	TREES TO BE RELOCATED: SEE LANDSCAPE PLAN FOR PROPOSED LOCATIONS
⊗ #	TREES TO BE REMOVED

MATCHLINE - SHEET 01
MATCHLINE - SHEET 03



MATCHLINE - SHEET 01
MATCHLINE - SHEET 03



TREE DISPOSITION LEGEND	
THE NUMBER UNDER EACH EXISTING TREE REFERS TO A DETAILED DESCRIPTION OF SPECIES, SIZE AND CONDITION IN THE TREE DISPOSITION TABLE ON LT-11	
SYMBOL	ACTION
○ #	TREES TO BE RETAINED
⊗ #	TREES TO BE RELOCATED: SEE LANDSCAPE PLAN FOR PROPOSED LOCATIONS
⊗ #	TREES TO BE REMOVED

PREPARED FOR/OWNER:
 CITY OF KEY WEST, FL
 P. O. BOX 1409
 3140 FLAGLER AVENUE
 KEY WEST, FL 33041

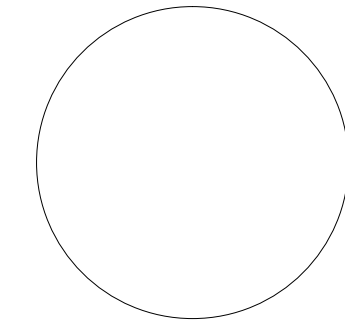


PROJECT NAME:
TRUMAN WATERFRONT PARK

PROJECT LOCATION/ADDRESS:
 TRUMAN WATERFRONT PARK
 WEST OF FORT STREET AND THE
 TRUMAN ANNEX DEVELOPMENT,
 NORTH OF KEY WEST NAVAL BASE

SUB-CONSULTANT INFORMATION:

PROFESSIONAL SEAL:



KIRK J. OLNEY
 FLORIDA REGISTERED LANDSCAPE
 LA0001705

SUBMITTAL DESCRIPTION / MILESTONE:

DEVELOPMENT APPLICATION
 March 3, 2014

REVISIONS:

DRAWING SHEET INFORMATION

BA PROJECT NO.: 12010
 SCALE: 1" = 20'-0"
 DATE: February 12, 2014
 DRAWN BY: KJO
 CHECKED BY: RPH
 CADD FILE: X:\Truman Waterfront Base.dwg

DRAWING TITLE:
TREE DISPOSITION PLAN
 SHEET NO.



BERMELLO AJAMIL & PARTNERS • INC

Architecture • Engineering • Planning
Interior Design • Landscape Architecture
2601 South Bayshore Drive
Suite 1000
Miami, Florida 33133
(305) 859-2050
Fax (305) 860-3700

PREPARED FOR/OWNER:
CITY OF KEY WEST, FL
P. O. BOX 1409
3140 FLAGLER AVENUE
KEY WEST, FL 33041



PROJECT NAME:

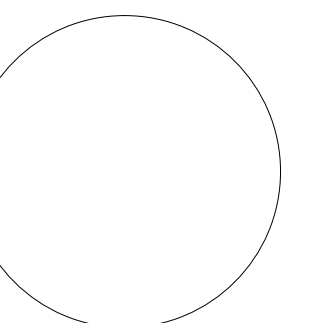
TRUMAN WATERFRONT PARK

PROJECT LOCATION/ADDRESS:

TRUMAN WATERFRONT PARK
WEST OF FORT STREET AND THE
TRUMAN ANNEX DEVELOPMENT,
NORTH OF KEY WEST NAVAL BASE

SUB-CONSULTANT INFORMATION:

PROFESSIONAL SEAL:



KIRK J. OLNEY
FLORIDA REGISTERED LANDSCAPE
LA0001705

SUBMITTAL DESCRIPTION / MILESTONE:

**DEVELOPMENT APPLICATION
March 3, 2014**

REVISIONS:

DRAWING SHEET INFORMATION

BA PROJECT NO.: 12010
SCALE: 1" = 20'-0"
DATE: February 12, 2014
DRAWN BY: KJO
CHECKED BY: RPH
CADD FILE: X:\Truman Waterfront Base.dwg

DRAWING TITLE:

TREE DISPOSITION PLAN

SHEET NO.

LT-03

MATCHLINE - SHEET 01
MATCHLINE - SHEET 03

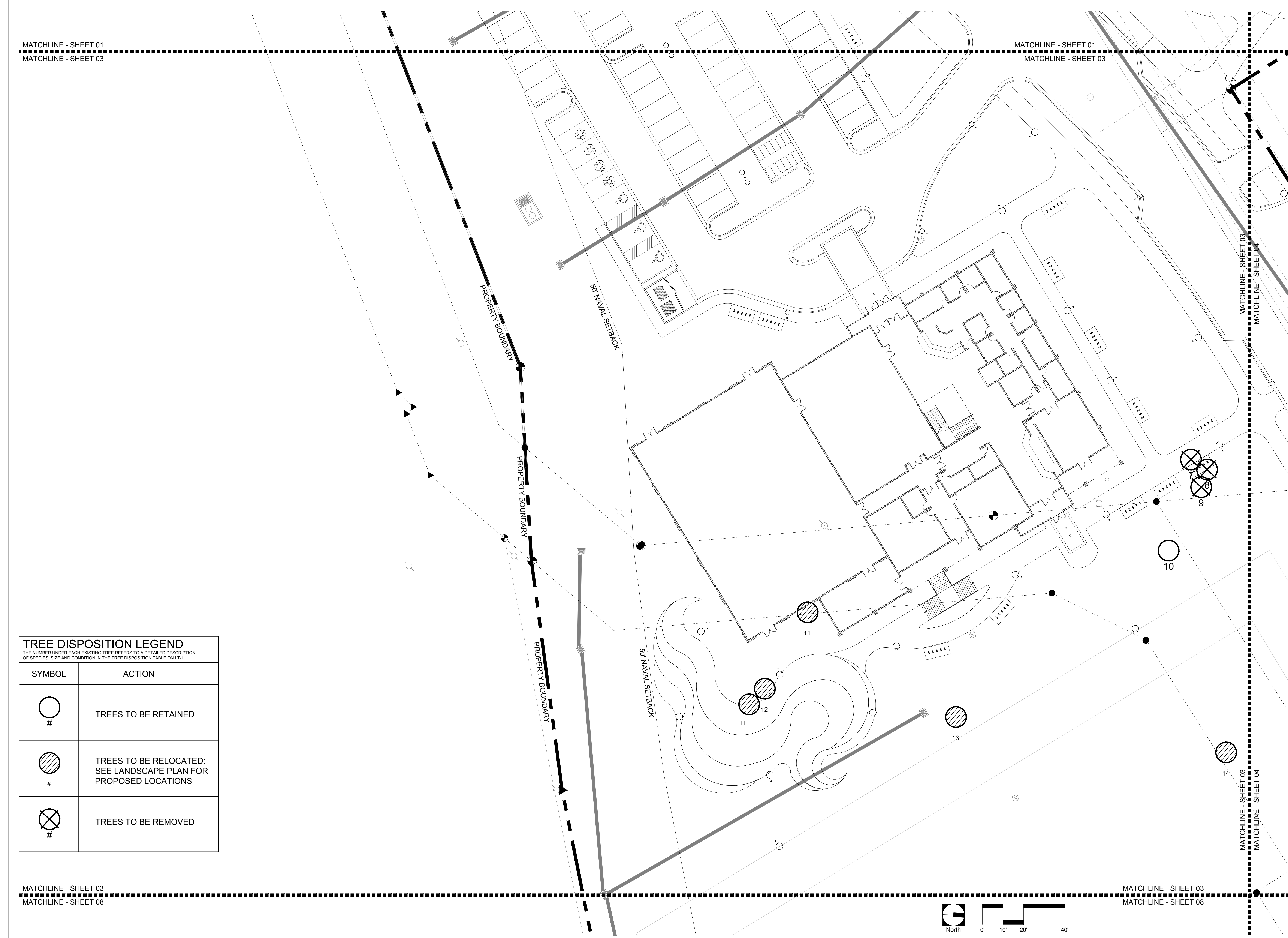
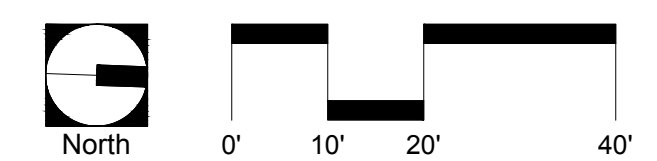
MATCHLINE - SHEET 01
MATCHLINE - SHEET 03

MATCHLINE - SHEET 03
MATCHLINE - SHEET 04

MATCHLINE - SHEET 03
MATCHLINE - SHEET 08

MATCHLINE - SHEET 03
MATCHLINE - SHEET 08

TREE DISPOSITION LEGEND	
THE NUMBER UNDER EACH EXISTING TREE REFERS TO A DETAILED DESCRIPTION OF SPECIES, SIZE AND CONDITION IN THE TREE DISPOSITION TABLE ON LT-11	
SYMBOL	ACTION
	TREES TO BE RETAINED
	TREES TO BE RELOCATED: SEE LANDSCAPE PLAN FOR PROPOSED LOCATIONS
	TREES TO BE REMOVED





**BERMELLO AJAMIL
& PARTNERS • INC**

Architecture • Engineering • Planning
Interior Design • Landscape Architecture
2601 South Bayshore Drive
Suite 1000
Miami, Florida 33133
(305) 859-2050
Fax (305) 860-3700

PREPARED FOR/OWNER:
CITY OF KEY WEST, FL
P. O. BOX 1409
3140 FLAGLER AVENUE
KEY WEST, FL 33041

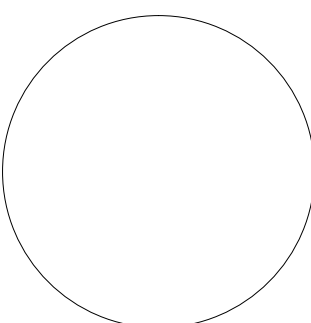


PROJECT NAME:
**TRUMAN
WATERFRONT
PARK**

PROJECT LOCATION/ADDRESS:
**TRUMAN WATERFRONT PARK
WEST OF FORT STREET AND THE
TRUMAN ANNEX DEVELOPMENT,
NORTH OF KEY WEST NAVAL BASE**

SUB-CONSULTANT INFORMATION:

PROFESSIONAL SEAL:



KIRK J. OLNEY
FLORIDA REGISTERED LANDSCAPE
LA0001705

SUBMITTAL DESCRIPTION / MILESTONE:

**DEVELOPMENT
APPLICATION
March 3, 2014**

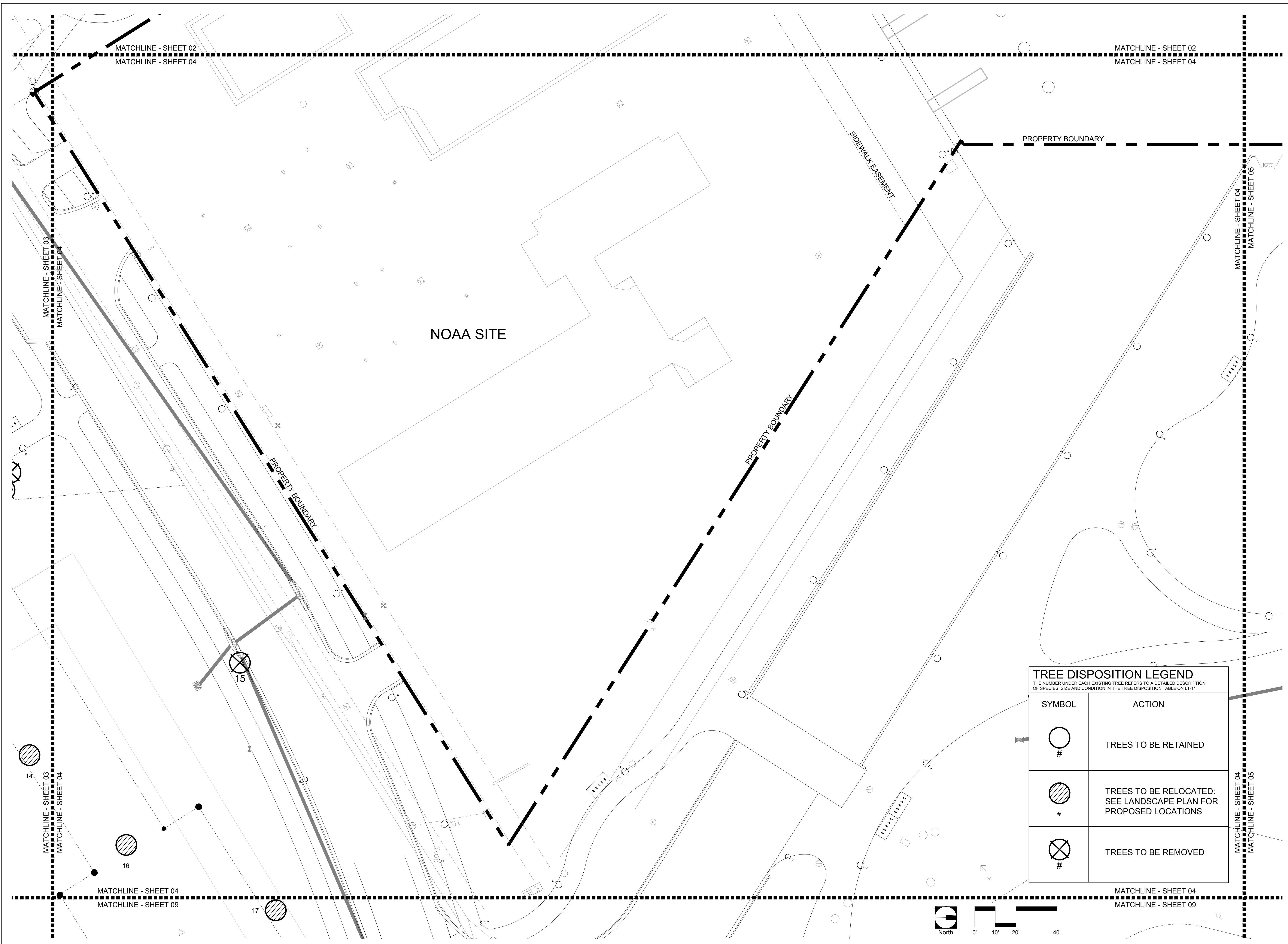
REVISIONS:

DRAWING SHEET INFORMATION

BA PROJECT NO.: 12010
SCALE: 1" = 20'-0"
DATE: February 12, 2014
DRAWN BY: KJO
CHECKED BY: RPH
CADD FILE: X:\Truman Waterfront Base.dwg

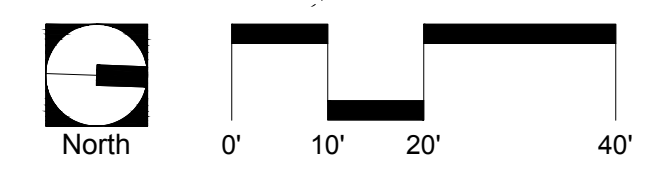
DRAWING TITLE:
**TREE
DISPOSITION
PLAN**
SHEET NO.

LT-04



TREE DISPOSITION LEGEND
THE NUMBER UNDER EACH EXISTING TREE REFERS TO A DETAILED DESCRIPTION OF SPECIES, SIZE AND CONDITION IN THE TREE DISPOSITION TABLE ON LT-11

SYMBOL	ACTION
	TREES TO BE RETAINED
	TREES TO BE RELOCATED: SEE LANDSCAPE PLAN FOR PROPOSED LOCATIONS
	TREES TO BE REMOVED





BERMELLO AJAMIL & PARTNERS • INC

Architecture • Engineering • Planning
Interior Design • Landscape Architecture
2601 South Bayshore Drive
Suite 1000
Miami, Florida 33133
(305) 859-2050
Fax (305) 860-3700

PREPARED FOR/OWNER:
CITY OF KEY WEST, FL
P. O. BOX 1409
3140 FLAGLER AVENUE
KEY WEST, FL 33041

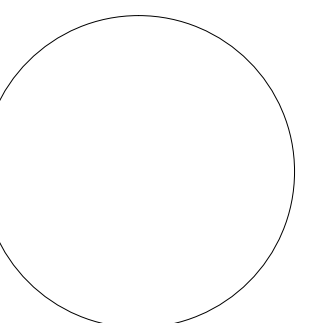


PROJECT NAME:
TRUMAN WATERFRONT PARK

PROJECT LOCATION/ADDRESS:
TRUMAN WATERFRONT PARK
WEST OF FORT STREET AND THE
TRUMAN ANNEX DEVELOPMENT,
NORTH OF KEY WEST NAVAL BASE

SUB-CONSULTANT INFORMATION:

PROFESSIONAL SEAL:



KIRK J. OLNEY
FLORIDA REGISTERED LANDSCAPE
LA0001705

SUBMITTAL DESCRIPTION / MILESTONE:

DEVELOPMENT APPLICATION
March 3, 2014

REVISIONS:

DRAWING SHEET INFORMATION

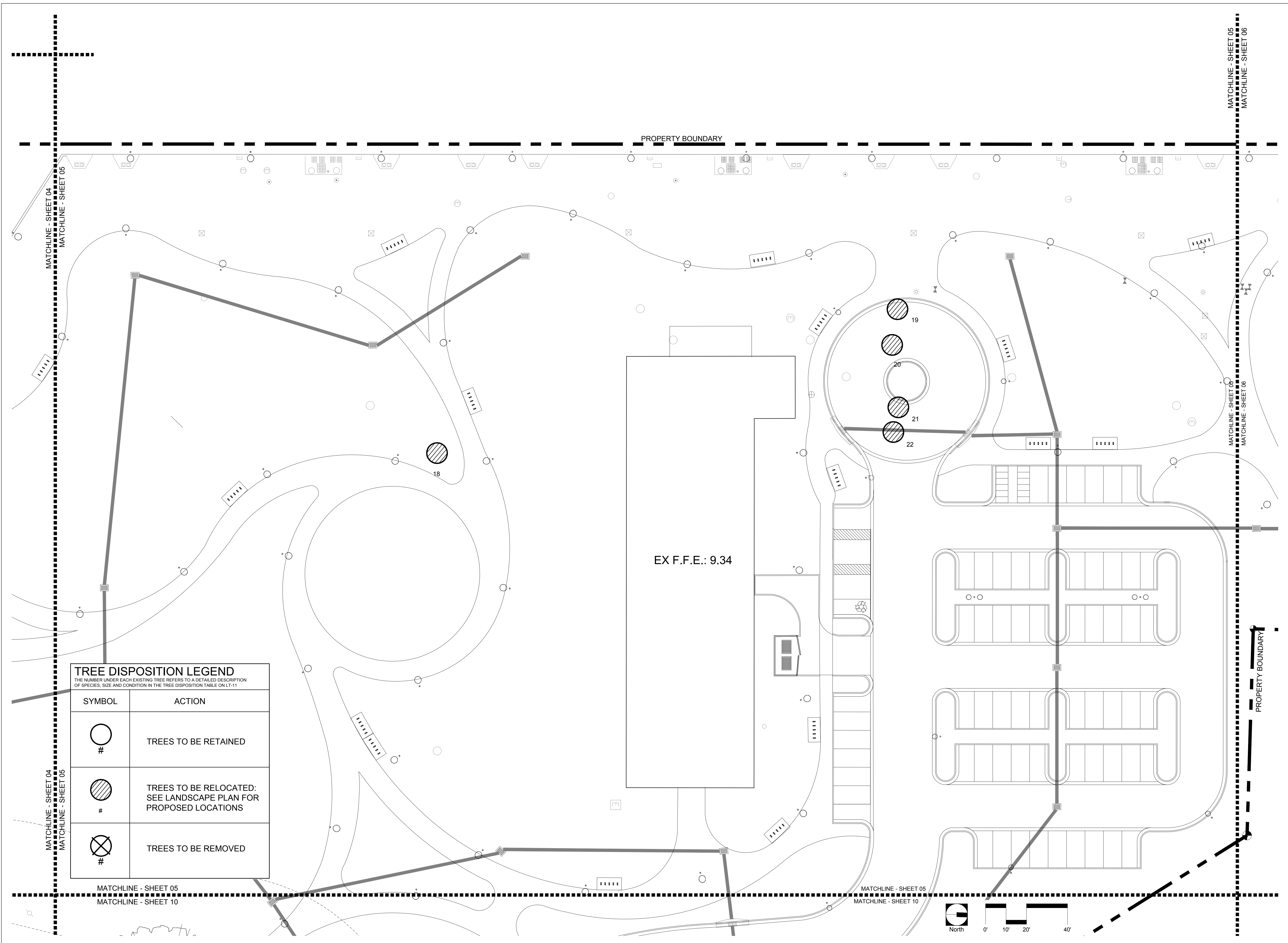
BA PROJECT NO.: 12010
SCALE: 1" = 20'-0"
DATE: February 12, 2014
DRAWN BY: KJO
CHECKED BY: RPH
CADD FILE: X:\Truman Waterfront Base.dwg

DRAWING TITLE:

TREE DISPOSITION PLAN

SHEET NO.

LT-05



TREE DISPOSITION LEGEND
THE NUMBER UNDER EACH EXISTING TREE REFERS TO A DETAILED DESCRIPTION OF SPECIES, SIZE AND CONDITION IN THE TREE DISPOSITION TABLE ON LT-11

SYMBOL	ACTION
○ #	TREES TO BE RETAINED
◐ #	TREES TO BE RELOCATED: SEE LANDSCAPE PLAN FOR PROPOSED LOCATIONS
⊗ #	TREES TO BE REMOVED

MATCHLINE - SHEET 05
MATCHLINE - SHEET 10

MATCHLINE - SHEET 05
MATCHLINE - SHEET 10



**BERMELLO AJAMIL
& PARTNERS • INC**

Architecture • Engineering • Planning
Interior Design • Landscape Architecture
2601 South Bayshore Drive
Suite 1000
Miami, Florida 33133
(305) 859-2050
Fax (305) 860-3700

PREPARED FOR/OWNER:
**CITY OF KEY WEST, FL
P. O. BOX 1409
3140 FLAGLER AVENUE
KEY WEST, FL 33041**



PROJECT NAME:

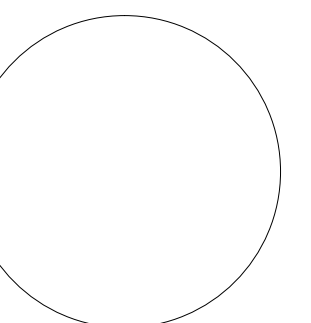
**TRUMAN
WATERFRONT
PARK**

PROJECT LOCATION/ADDRESS:

**TRUMAN WATERFRONT PARK
WEST OF FORT STREET AND THE
TRUMAN ANNEX DEVELOPMENT,
NORTH OF KEY WEST NAVAL BASE**

SUB-CONSULTANT INFORMATION:

PROFESSIONAL SEAL:



**KIRK J. OLNEY
FLORIDA REGISTERED LANDSCAPE
LA0001705**

SUBMITTAL DESCRIPTION / MILESTONE:

**DEVELOPMENT
APPLICATION
March 3, 2014**

REVISIONS:

DRAWING SHEET INFORMATION

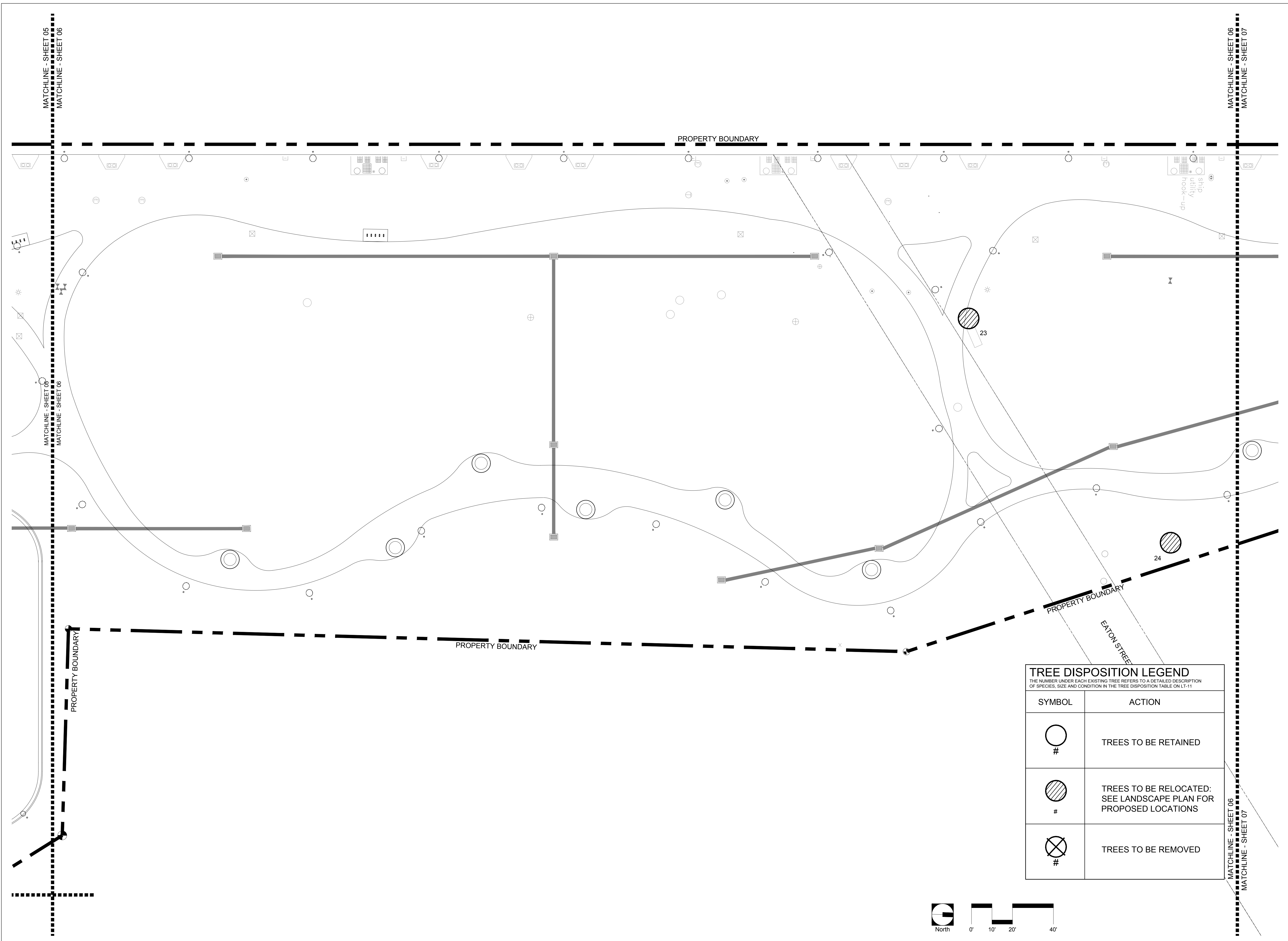
BA PROJECT NO.: 12010
SCALE: 1" = 20'-0"
DATE: February 12, 2014
DRAWN BY: KJO
CHECKED BY: RPH
CADD FILE: X:\Truman Waterfront Base.dwg

DRAWING TITLE:

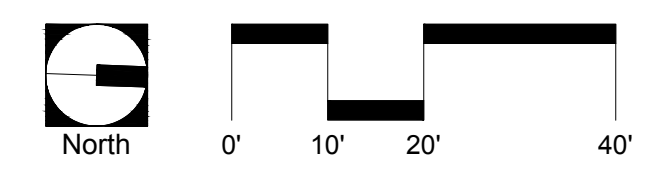
**TREE
DISPOSITION
PLAN**

SHEET NO.

LT-06



TREE DISPOSITION LEGEND	
THE NUMBER UNDER EACH EXISTING TREE REFERS TO A DETAILED DESCRIPTION OF SPECIES, SIZE AND CONDITION IN THE TREE DISPOSITION TABLE ON LT-11	
SYMBOL	ACTION
○ #	TREES TO BE RETAINED
⊘ #	TREES TO BE RELOCATED: SEE LANDSCAPE PLAN FOR PROPOSED LOCATIONS
⊗ #	TREES TO BE REMOVED





BERMELLO AJAMIL
& PARTNERS • INC

Architecture • Engineering • Planning
Interior Design • Landscape Architecture
2601 South Bayshore Drive
Suite 1000
Miami, Florida 33133
(305) 859-2050
Fax (305) 860-3700

PREPARED FOR/OWNER:
CITY OF KEY WEST, FL
P. O. BOX 1409
3140 FLAGLER AVENUE
KEY WEST, FL 33041



PROJECT NAME:

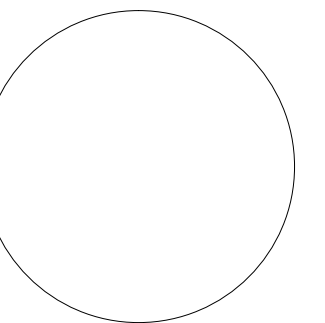
**TRUMAN
WATERFRONT
PARK**

PROJECT LOCATION/ADDRESS:

TRUMAN WATERFRONT PARK
WEST OF FORT STREET AND THE
TRUMAN ANNEX DEVELOPMENT,
NORTH OF KEY WEST NAVAL BASE

SUB-CONSULTANT INFORMATION:

PROFESSIONAL SEAL:



KIRK J. OLNEY
FLORIDA REGISTERED LANDSCAPE
LA0001705

SUBMITTAL DESCRIPTION / MILESTONE:

**DEVELOPMENT
APPLICATION
March 3, 2014**

REVISIONS:

DRAWING SHEET INFORMATION

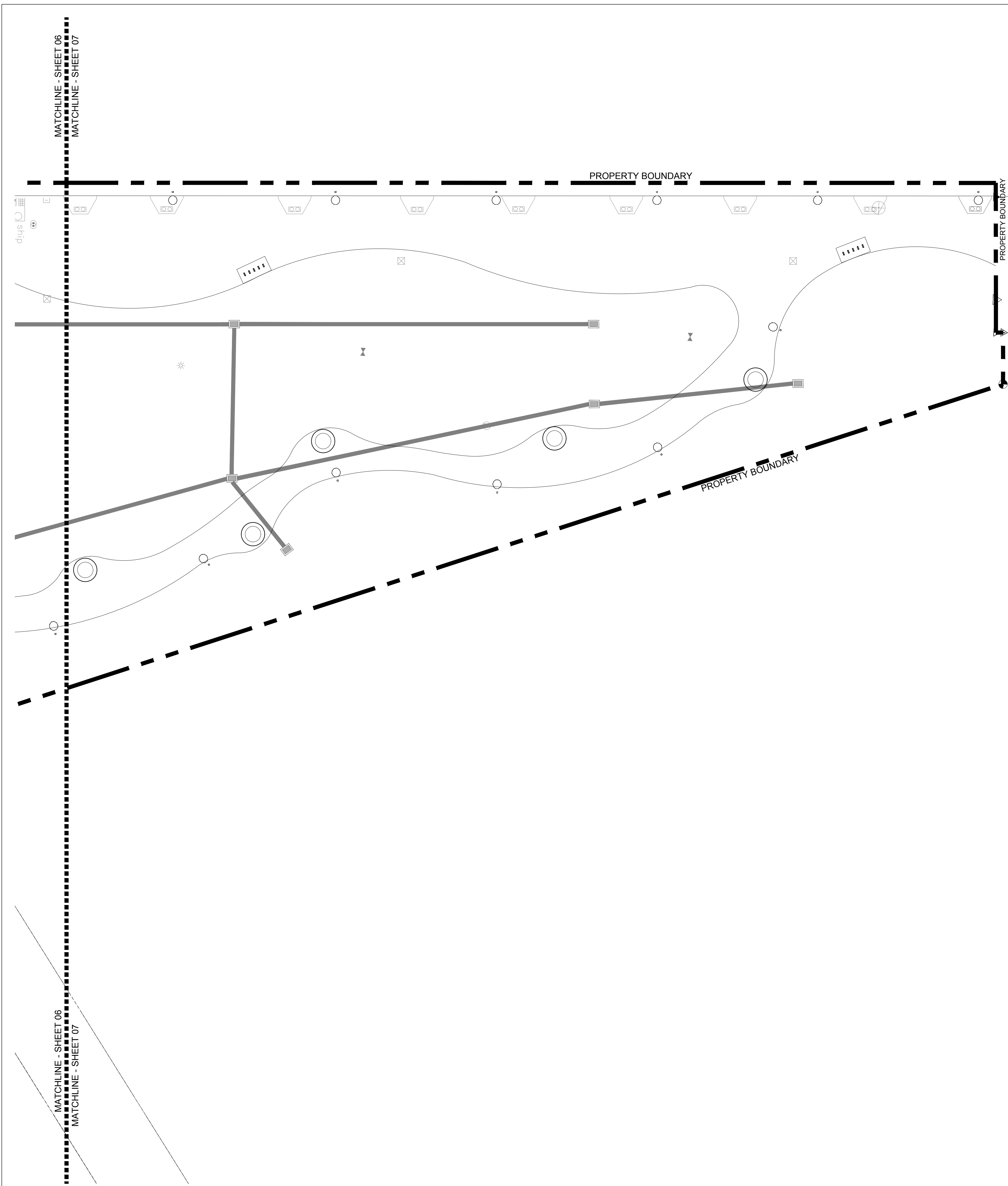
BA PROJECT NO.: 12010
SCALE: 1" = 20'-0"
DATE: February 12, 2014
DRAWN BY: KJO
CHECKED BY: RPH
CADD FILE: X:\Truman Waterfront Base.dwg

DRAWING TITLE:

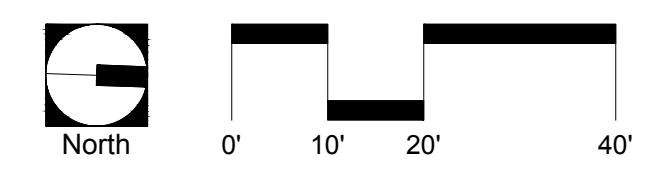
**TREE
DISPOSITION
PLAN**

SHEET NO.

LT-07



TREE DISPOSITION LEGEND	
THE NUMBER UNDER EACH EXISTING TREE REFERS TO A DETAILED DESCRIPTION OF SPECIES, SIZE AND CONDITION IN THE TREE DISPOSITION TABLE ON LT-11	
SYMBOL	ACTION
	TREES TO BE RETAINED
	TREES TO BE RELOCATED: SEE LANDSCAPE PLAN FOR PROPOSED LOCATIONS
	TREES TO BE REMOVED



MATCHLINE - SHEET 03
MATCHLINE - SHEET 08

MATCHLINE - SHEET 03
MATCHLINE - SHEET 08



**BERMELLO AJAMIL
& PARTNERS • INC**

Architecture • Engineering • Planning
Interior Design • Landscape Architecture
2601 South Bayshore Drive
Suite 1000
Miami, Florida 33133
(305) 859-2050
Fax (305) 860-3700

PREPARED FOR/OWNER:
CITY OF KEY WEST, FL
P. O. BOX 1409
3140 FLAGLER AVENUE
KEY WEST, FL 33041



PROJECT NAME:

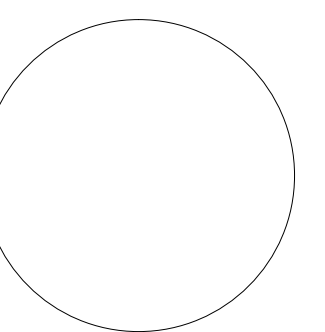
**TRUMAN
WATERFRONT
PARK**

PROJECT LOCATION/ADDRESS:

TRUMAN WATERFRONT PARK
WEST OF FORT STREET AND THE
TRUMAN ANNEX DEVELOPMENT,
NORTH OF KEY WEST NAVAL BASE

SUB-CONSULTANT INFORMATION:

PROFESSIONAL SEAL:



KIRK J. OLNEY
FLORIDA REGISTERED LANDSCAPE
LA0001705

SUBMITTAL DESCRIPTION / MILESTONE:

**DEVELOPMENT
APPLICATION
March 3, 2014**

REVISIONS:

DRAWING SHEET INFORMATION

BA PROJECT NO.: 12010
SCALE: 1" = 20'-0"
DATE: February 12, 2014
DRAWN BY: KJO
CHECKED BY: RPH
CADD FILE: X:\Truman Waterfront Base.dwg

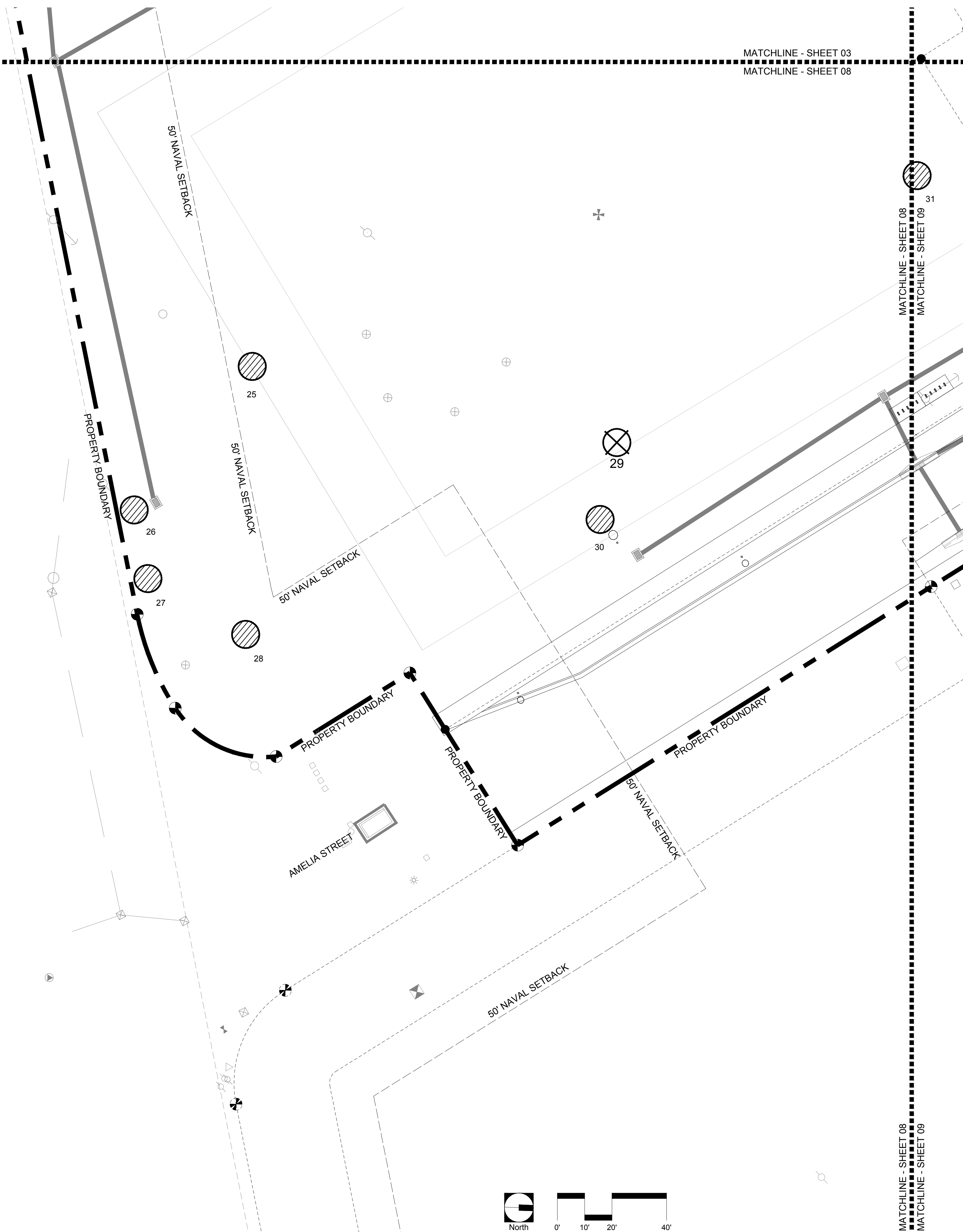
DRAWING TITLE:

**TREE
DISPOSITION
PLAN**

SHEET NO.

LT-08

TREE DISPOSITION LEGEND	
THE NUMBER UNDER EACH EXISTING TREE REFERS TO A DETAILED DESCRIPTION OF SPECIES, SIZE AND CONDITION IN THE TREE DISPOSITION TABLE ON LT-11	
SYMBOL	ACTION
○ #	TREES TO BE RETAINED
⊗ #	TREES TO BE RELOCATED: SEE LANDSCAPE PLAN FOR PROPOSED LOCATIONS
⊗ #	TREES TO BE REMOVED



MATCHLINE - SHEET 08
MATCHLINE - SHEET 09

MATCHLINE - SHEET 08
MATCHLINE - SHEET 09



BERMELLO AJAMIL & PARTNERS • INC

Architecture • Engineering • Planning
Interior Design • Landscape Architecture
2601 South Bayshore Drive
Suite 1000
Miami, Florida 33133
(305) 859-2050
Fax (305) 860-3700

PREPARED FOR/OWNER:
CITY OF KEY WEST, FL
P. O. BOX 1409
3140 FLAGLER AVENUE
KEY WEST, FL 33041

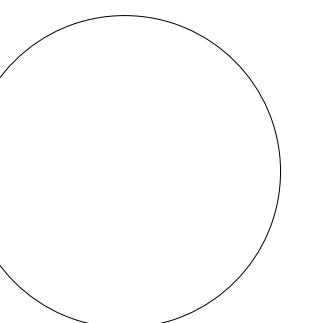


PROJECT NAME:
TRUMAN WATERFRONT PARK

PROJECT LOCATION/ADDRESS:
TRUMAN WATERFRONT PARK
WEST OF FORT STREET AND THE
TRUMAN ANNEX DEVELOPMENT,
NORTH OF KEY WEST NAVAL BASE

SUB-CONSULTANT INFORMATION:

PROFESSIONAL SEAL:



KIRK J. OLNEY
FLORIDA REGISTERED LANDSCAPE
LA0001705

SUBMITTAL DESCRIPTION / MILESTONE:

DEVELOPMENT APPLICATION
March 3, 2014

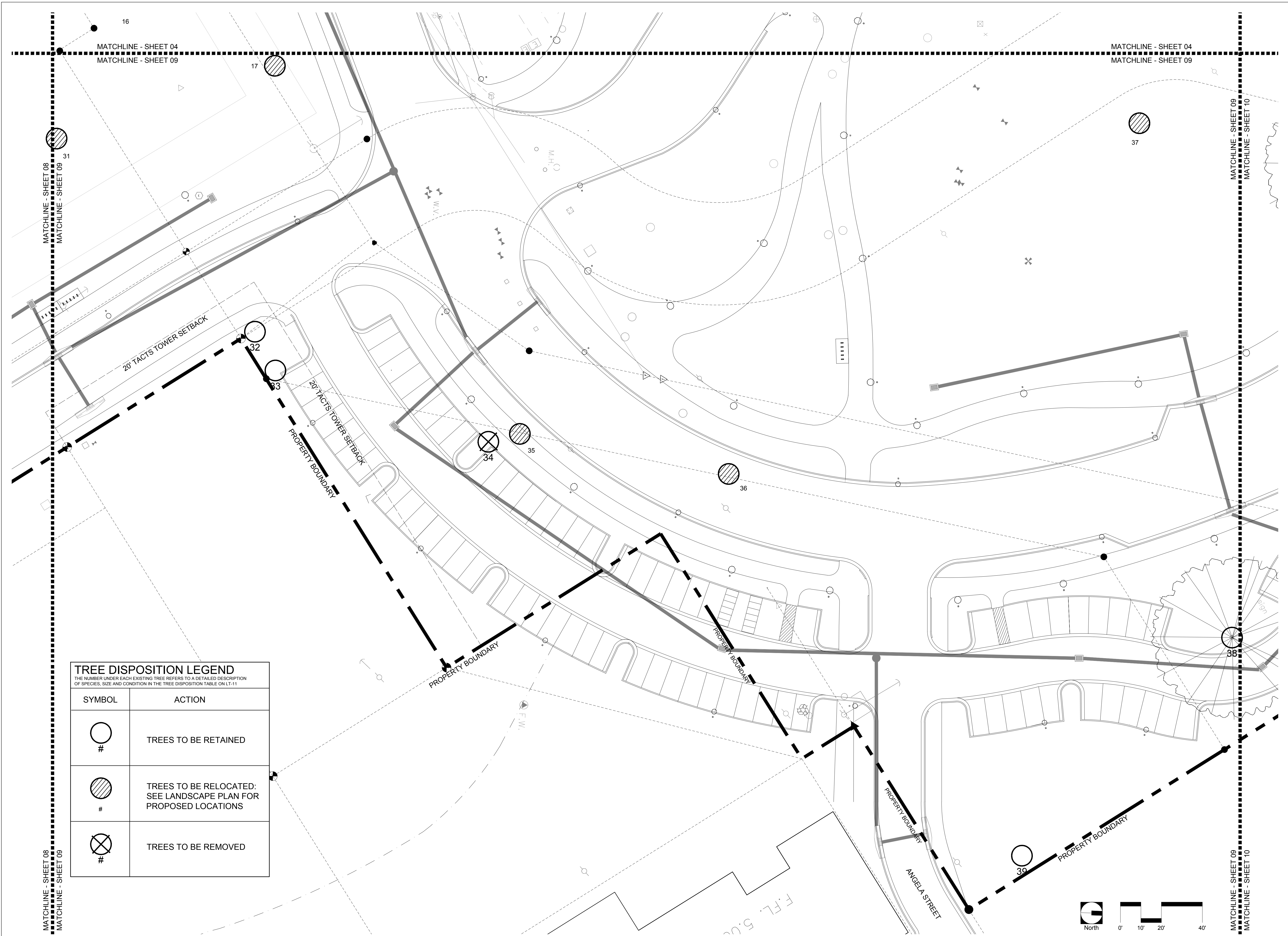
REVISIONS:

DRAWING SHEET INFORMATION

BA PROJECT NO.: 12010
SCALE: 1" = 20'-0"
DATE: February 12, 2014
DRAWN BY: KJO
CHECKED BY: RPH
CADD FILE: X:\Truman Waterfront Base.dwg

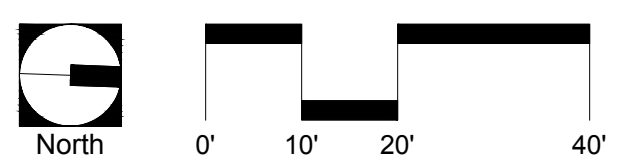
DRAWING TITLE:
TREE DISPOSITION PLAN
SHEET NO.

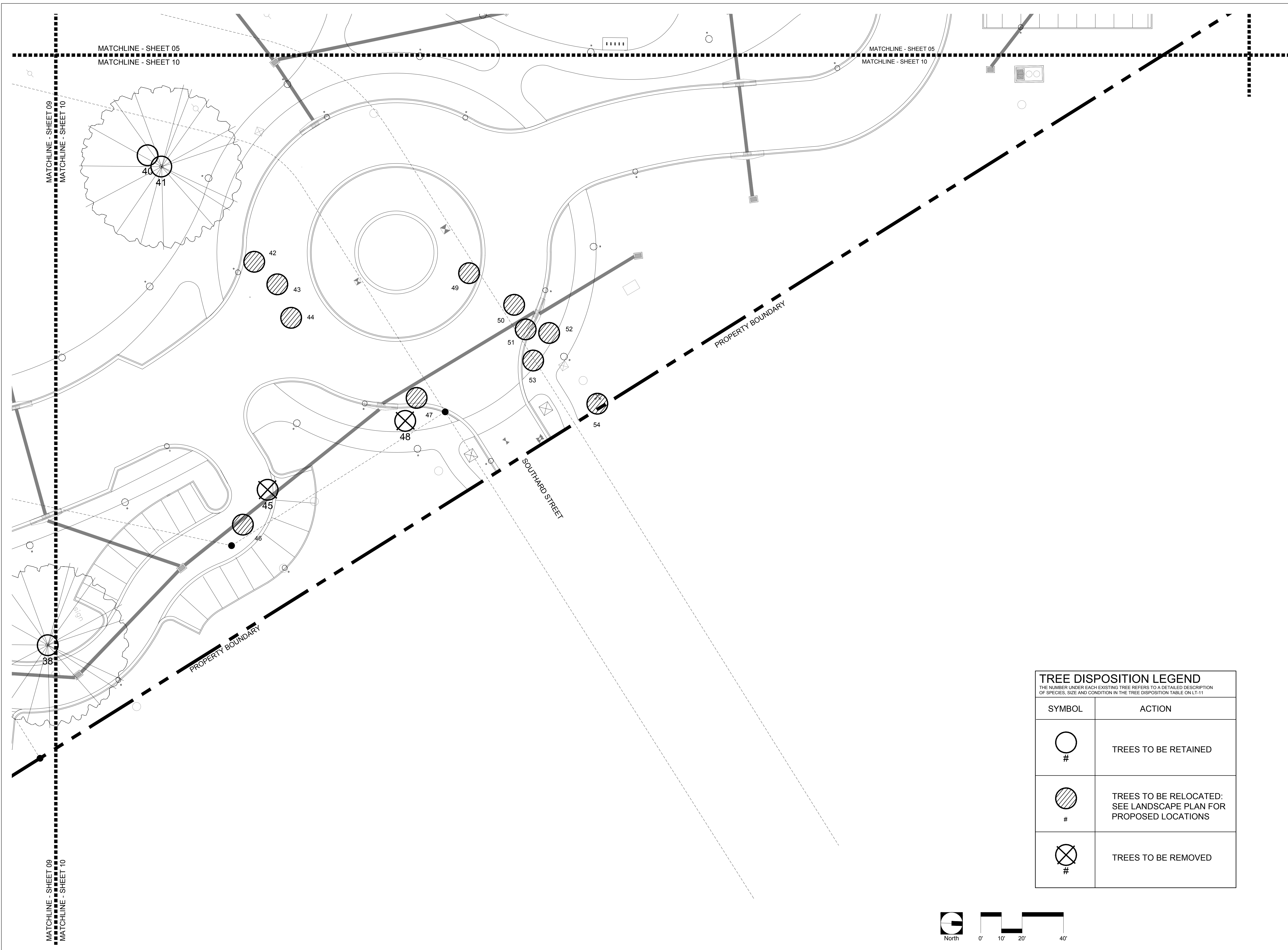
LT-09



TREE DISPOSITION LEGEND
THE NUMBER UNDER EACH EXISTING TREE REFERS TO A DETAILED DESCRIPTION OF SPECIES, SIZE AND CONDITION IN THE TREE DISPOSITION TABLE ON LT-11

SYMBOL	ACTION
○ #	TREES TO BE RETAINED
◌ #	TREES TO BE RELOCATED: SEE LANDSCAPE PLAN FOR PROPOSED LOCATIONS
⊗ #	TREES TO BE REMOVED





PREPARED FOR/OWNER:
 CITY OF KEY WEST, FL
 P. O. BOX 1409
 3140 FLAGLER AVENUE
 KEY WEST, FL 33041

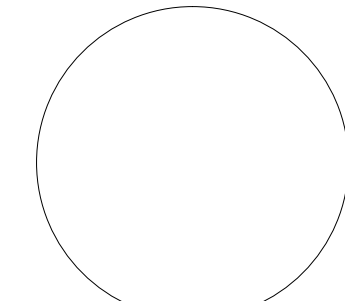


PROJECT NAME:
TRUMAN WATERFRONT PARK

PROJECT LOCATION/ADDRESS:
 TRUMAN WATERFRONT PARK
 WEST OF FORT STREET AND THE
 TRUMAN ANNEX DEVELOPMENT,
 NORTH OF KEY WEST NAVAL BASE

SUB-CONSULTANT INFORMATION:

PROFESSIONAL SEAL:



KIRK J. OLNEY
 FLORIDA REGISTERED LANDSCAPE
 LA0001705

SUBMITTAL DESCRIPTION / MILESTONE:

DEVELOPMENT APPLICATION
 March 3, 2014

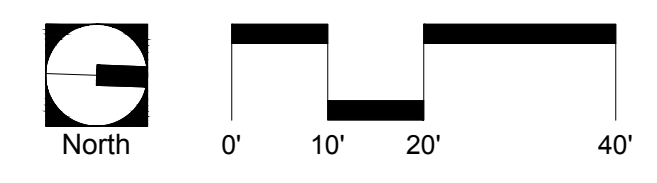
REVISIONS:

DRAWING SHEET INFORMATION

BA PROJECT NO.: 12010
 SCALE: AS NOTED
 DATE: February 12, 2014
 DRAWN BY: KJO
 CHECKED BY: RPH
 CADD FILE: X:\Truman Waterfront Base.dwg

DRAWING TITLE:
TREE DISPOSITION PLAN
 SHEET NO.

TREE DISPOSITION LEGEND	
THE NUMBER UNDER EACH EXISTING TREE REFERS TO A DETAILED DESCRIPTION OF SPECIES, SIZE AND CONDITION IN THE TREE DISPOSITION TABLE ON LT-11	
SYMBOL	ACTION
#	TREES TO BE RETAINED
#	TREES TO BE RELOCATED: SEE LANDSCAPE PLAN FOR PROPOSED LOCATIONS
#	TREES TO BE REMOVED



0	BOTANICAL NAME	COMMON NAME	SIZE	CONDITION	Disposition
1	<i>Cocos nucifera</i>	COCONUT PALM	15' OVERALL HEIGHT	GOOD	RELOCATE
2	<i>Cocos nucifera</i>	COCONUT PALM	15' OVERALL HEIGHT	GOOD	RELOCATE
3	<i>Cocos nucifera</i>	COCONUT PALM	15' OVERALL HEIGHT	GOOD	RELOCATE
4	<i>Bursera simaruba</i>	GUMBO LIMBO	15' x 15'; 10" CAL	GOOD	RELOCATE
5	<i>Bursera simaruba</i>	GUMBO LIMBO	15' x 12'; 8" CAL	GOOD	RELOCATE
6	<i>Hyophorbe lagenicaulis</i>	BOTTLE PALM	5' OVERALL HEIGHT	GOOD	RELOCATE
7	<i>Phoenix reclinata</i>	DATE PALM		INVASIVE SPECIES	REMOVE
8	<i>Casuarina spp.</i>	AUSTRALIAN PINE	10' Cluster	INVASIVE SPECIES	REMOVE
9	<i>Phoenix reclinata</i>	DATE PALM		INVASIVE SPECIES	REMOVE
10	<i>Swietenia mahagoni</i>	MAHOGANY	30' x 30'; 30" CAL	GOOD	PRESERVE
11	<i>Swietenia mahagoni</i>	MAHOGANY	20' x 20'; 18" CAL	GOOD	RELOCATE
12	<i>Cocos nucifera</i>	COCONUT PALM	24' OVERALL HEIGHT	GOOD	RELOCATE
13	<i>Cocos nucifera</i>	COCONUT PALM	20' OVERALL HEIGHT	GOOD	RELOCATE
14	<i>Swietenia mahagoni</i>	MAHOGANY	30' x 30'; 24" CAL	GOOD	RELOCATE
15	<i>Ficus nidia</i>	LAUREL FICUS	20' x 30'; 20" CAL	INVASIVE SPECIES	REMOVE
16	<i>Sabal palmetto</i>	CABBAGE PALM	25' OVERALL HEIGHT	GOOD	RELOCATE
17	<i>Cocos nucifera</i>	COCONUT PALM	20' OVERALL HEIGHT	GOOD	RELOCATE
18	<i>Cocos nucifera</i>	COCONUT PALM	12' OVERALL HEIGHT	GOOD	RELOCATE
19	<i>Cocos nucifera</i>	COCONUT PALM	10' OVERALL HEIGHT	GOOD	RELOCATE
20	<i>Cocos nucifera</i>	COCONUT PALM	10' OVERALL HEIGHT	GOOD	RELOCATE
21	<i>Cocos nucifera</i>	COCONUT PALM	10' OVERALL HEIGHT	GOOD	RELOCATE
22	<i>Cocos nucifera</i>	COCONUT PALM	10' OVERALL HEIGHT	GOOD	RELOCATE
23	<i>Washingtonia robusta</i>	WASHINGTON PALM	24' OVERALL HEIGHT	GOOD	RELOCATE
24	<i>Washingtonia robusta</i>	WASHINGTON PALM	24' OVERALL HEIGHT	GOOD	RELOCATE
25	<i>Swietenia mahagoni</i>	MAHOGANY	20' x 20'; 12" CAL	GOOD	RELOCATE
26	<i>Cocos nucifera</i>	COCONUT PALM	15' OVERALL HEIGHT	GOOD	RELOCATE
27	<i>Cocos nucifera</i>	COCONUT PALM	20' OVERALL HEIGHT	GOOD	RELOCATE
28	<i>Cocos nucifera</i>	COCONUT PALM	20' OVERALL HEIGHT	GOOD	RELOCATE
29	<i>Casuarina spp.</i>	AUSTRALIAN PINE	40' x 40'; 24" CAL	INVASIVE SPECIES	REMOVE
30	<i>Cocos nucifera</i>	COCONUT PALM	25' OVERALL HEIGHT	GOOD	RELOCATE
31	<i>unknown</i>		12" CAL		REMOVE
32	<i>Coccoloba uvifera</i>	SEAGRAPE	20' x 20'; 36" CLUMP	GOOD	PRESERVE
33	<i>Bursera simaruba</i>	GUMBO LIMBO	15' x 15'; 12" CAL	GOOD	PRESERVE
34	<i>Bursera simaruba</i>	GUMBO LIMBO	20' x 10'; 10" CAL	POOR	REMOVE
35	<i>Bursera simaruba</i>	GUMBO LIMBO	25' x 15'; 16" CAL	GOOD	RELOCATE
36	<i>Bursera simaruba</i>	GUMBO LIMBO	20' x 20'; 18" CAL	GOOD	RELOCATE
37	<i>Cocos nucifera</i>	COCONUT PALM	20' OVERALL HEIGHT	GOOD	RELOCATE
38	<i>Coccoloba uvifera</i>	SEAGRAPE	25' x 35'; 36" CLUMP	GOOD	PRESERVE
39	<i>Bursera simaruba</i>	GUMBO LIMBO	30' x 30'; 24" CAL	GOOD	PRESERVE
40	<i>Phoenix dactylifera 'medjool'</i>	MEDJOOOL DATE PALM	40' x 40'; 15" CLUMP	GOOD	PRESERVE
41	<i>Ficus nidia</i>	LAUREL FICUS		GOOD	PRESERVE
42	<i>Bursera simaruba</i>	GUMBO LIMBO	20' x 15'; 18" CAL	GOOD	RELOCATE
43	<i>Bursera simaruba</i>	GUMBO LIMBO	15' x 15'; 12" CAL	GOOD	RELOCATE
44	<i>Bursera simaruba</i>	GUMBO LIMBO	15' x 15'; 16" CAL	GOOD	RELOCATE
45	<i>Bucida buceras</i>	BLACK OLIVE	15' x 15'; 8" CAL	POOR	REMOVE
46	<i>Bursera simaruba</i>	GUMBO LIMBO	18' x 18'; 14" CAL	GOOD	RELOCATE
47	<i>Washingtonia robusta</i>	WASHINGTON PALM	30' OVERALL HEIGHT	GOOD	RELOCATE
48	<i>Ficus nidia</i>	LAUREL FICUS	15' x 15'; 18" CLUMP	INVASIVE SPECIES	REMOVE
49	<i>Cocos nucifera</i>	COCONUT PALM	35' OVERALL HEIGHT	GOOD	RELOCATE
50	<i>Washingtonia robusta</i>	WASHINGTON PALM	25' OVERALL HEIGHT	GOOD	RELOCATE
51	<i>Washingtonia robusta</i>	WASHINGTON PALM	25' OVERALL HEIGHT	GOOD	RELOCATE
52	<i>Washingtonia robusta</i>	WASHINGTON PALM	25' OVERALL HEIGHT	GOOD	RELOCATE
53	<i>Bursera simaruba</i>	GUMBO LIMBO	20' x 20'; DBL 12" CAL	GOOD	RELOCATE
54	<i>Washingtonia robusta</i>	WASHINGTON PALM	25' OVERALL HEIGHT	GOOD	RELOCATE



BERMELLO AJAMIL
& PARTNERS • INC

Architecture • Engineering • Planning
Interior Design • Landscape Architecture
2601 South Bayshore Drive
Suite 1000
Miami, Florida 33133
(305) 859-2050
Fax (305) 860-3700

PREPARED FOR/OWNER:
CITY OF KEY WEST, FL
P. O. BOX 1409
3140 FLAGLER AVENUE
KEY WEST, FL 33041



PROJECT NAME:

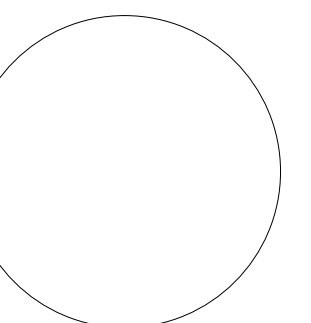
**TRUMAN
WATERFRONT
PARK**

PROJECT LOCATION/ADDRESS:

TRUMAN WATERFRONT PARK
WEST OF FORT STREET AND THE
TRUMAN ANNEX DEVELOPMENT,
NORTH OF KEY WEST NAVAL BASE

SUB-CONSULTANT INFORMATION:

PROFESSIONAL SEAL:



KIRK J. OLNEY
FLORIDA REGISTERED LANDSCAPE
LA0001705

SUBMITTAL DESCRIPTION / MILESTONE:

**DEVELOPMENT
APPLICATION
March 3, 2014**

REVISIONS:

DRAWING SHEET INFORMATION

BA PROJECT NO.: 12010
SCALE: AS NOTED
DATE: February 12, 2014
DRAWN BY: KJO
CHECKED BY: RPH
CADD FILE: X:\Truman Waterfront Base.dwg

DRAWING TITLE:

**TREE
DISPOSITION
TABLE**

SHEET NO.