

Seal:

ELIZABETH NEWLAND  
Registered Landscape Architect  
# LA0001288  
State of Florida

Consultants:

Revisions:

**Dockmaster Building**  
GARRISON BIGHT  
KEY WEST, FLORIDA

Drawing Size: 24x36 Project #:

Drawn By: EN Checked By: EN

Title:  
EXISTING TREE & PALM DISPOSITION PLAN

Sheet Number:

L-1.0

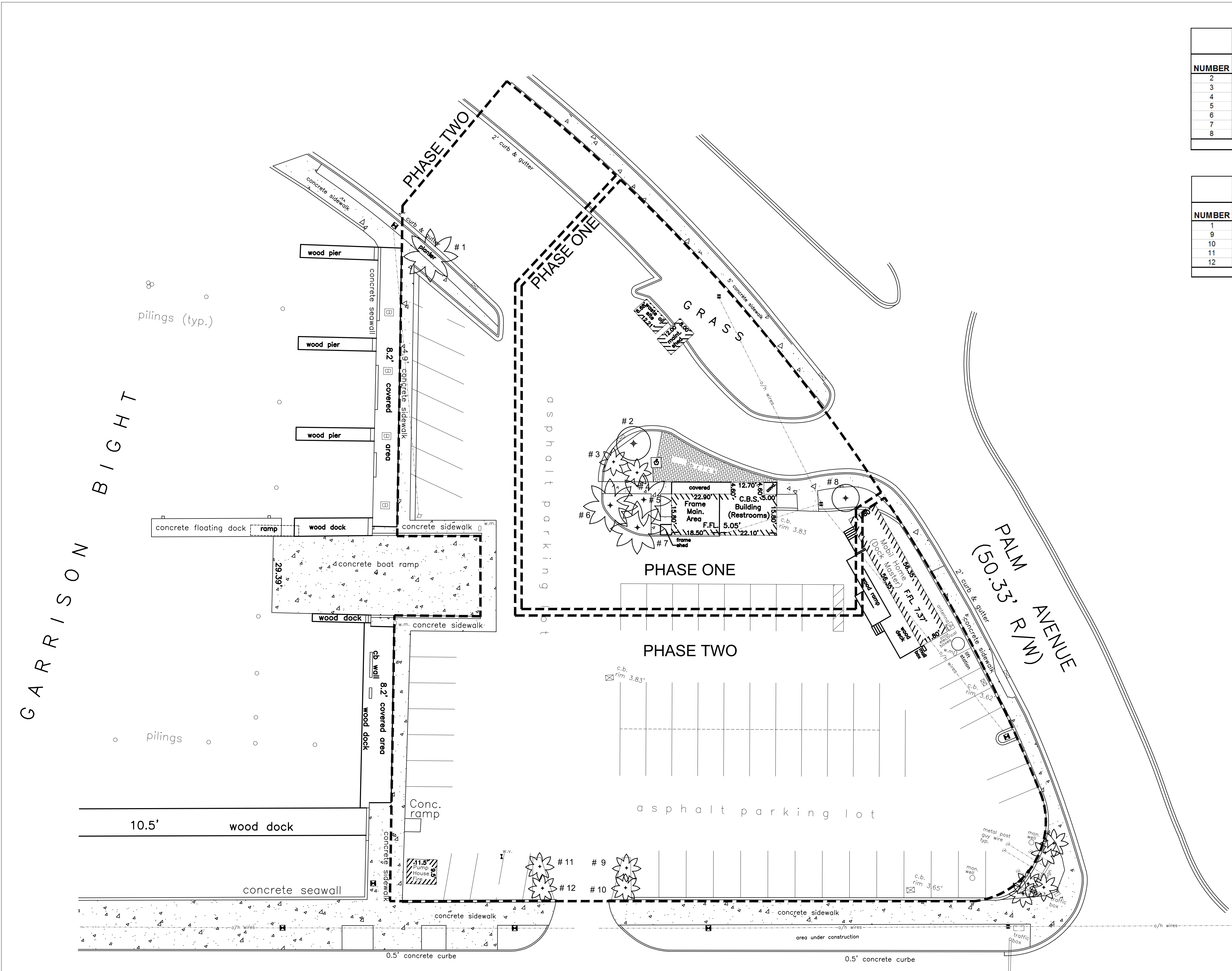
Date: - APRIL 30, 2013

City of Key West Dockmaster Building							Existing	
Tree Disposition Schedule Phase One								
NUMBER	BOTANICAL NAME	COMMON NAME	HEIGHT	SPREAD	CALIPER	CONDITION	STATUS	
2	Cordia sebestena	Geiger Tree	15'-20'	10'-15'	4"-6"	Poor/V Crotch	Remove	
3	Thrinax morrisii	Key Thatch Palm	8'-10'	4'-6"	4"-6"	Fair	Transplant	
4	Thrinax morrisii	Key Thatch Palm	8'-10'	4'-6"	4"-6"	Fair	Transplant	
5	Cocos nucifera	Coconut	20'-25'	15'-20'	8"-10"	Fair	Transplant	
6	Cocos nucifera	Coconut	25'-30'	15'-20'	8"-10"	Poor	Remove	
7	Cocos nucifera	Coconut	20'-25'	15'-20'	8"-10"	Fair	Transplant	
8	Plumeria rubra	Frangipani	10'-12'	10'-12'	4"-6"	Poor	Remove	

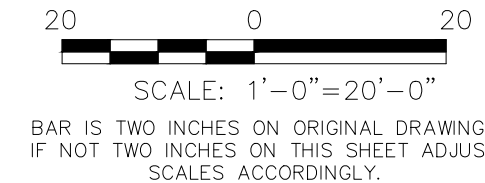
All Shrubs/Vegetation/Stumps Not Shown On This Schedule Within the Project Limits Are To Be Removed

City of Key West Dockmaster Building							Existing	
Tree Disposition Schedule Phase Two								
NUMBER	BOTANICAL NAME	COMMON NAME	HEIGHT	SPREAD	CALIPER	CONDITION	STATUS	
1	Cocos nucifera	Coconut	20'-25'	15'-20'	8"-10"	Poor/Double	Remove	
9	Thrinax radiata	Thatch Palm	10'-12'	8'-10"	4"-6"	Good	Transplant	
10	Thrinax radiata	Thatch Palm	10'-12'	8'-10"	4"-6"	Good	Transplant	
11	Thrinax radiata	Thatch Palm	10'-12'	8'-10"	4"-6"	Good	Transplant	
12	Thrinax radiata	Thatch Palm	10'-12'	8'-10"	4"-6"	Good	Transplant	

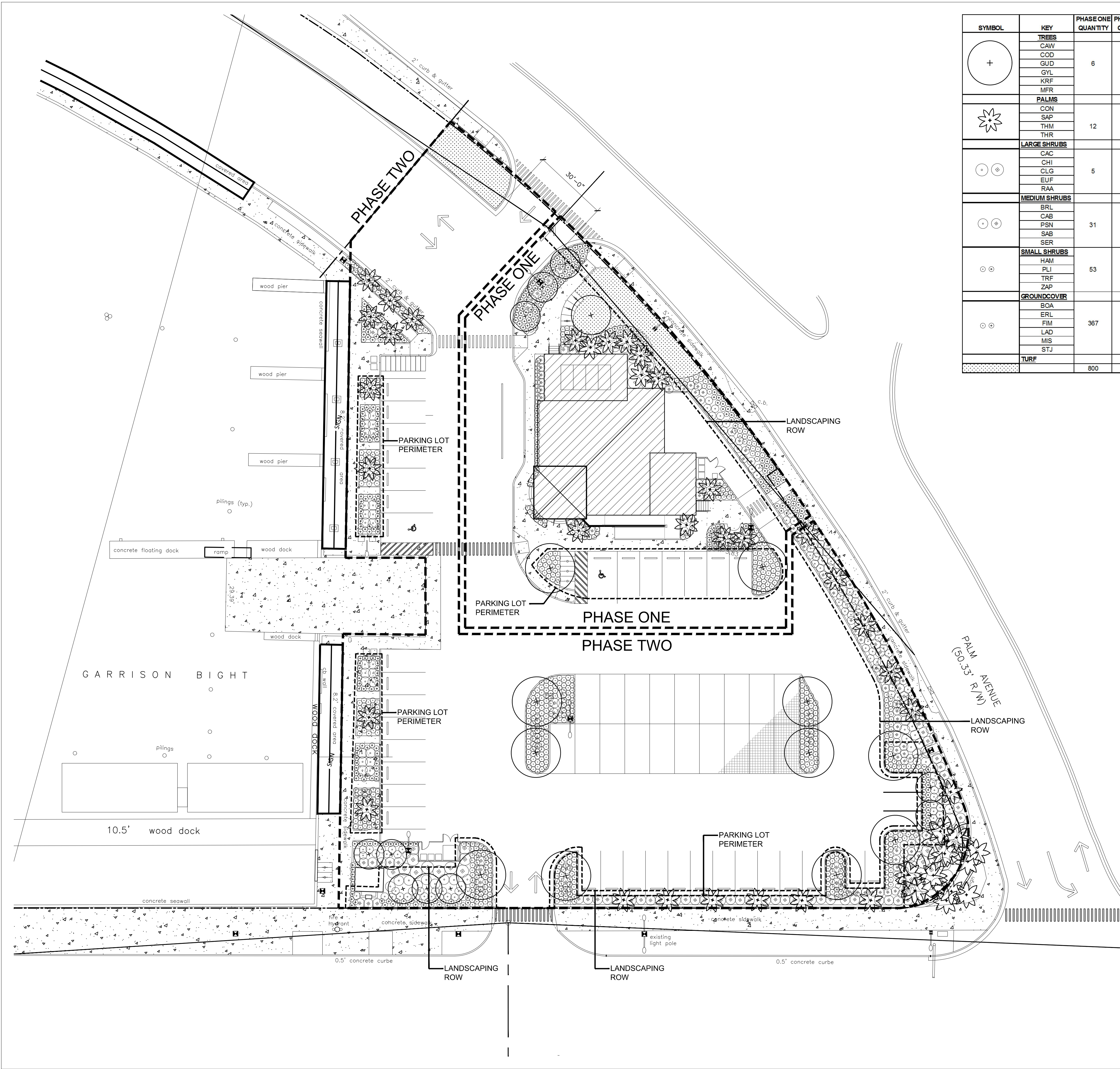
All Shrubs/Vegetation/Stumps Not Shown On This Schedule Within the Project Limits Are To Be Removed



NOTE: LOCATION OF EXISTING TREES AND PALMS ARE APPROXIMATE ONLY







SYMBOL	KEY	PHASE ONE QUANTITY	PHASE TWO QUANTITY	SCIENTIFIC NAME	COMMON NAME	NATIVE	CALIPER	HEIGHT	CANOPY	CONTAINER	SPACING	CONDITION	
+	<b>TREES</b>												
	CAW	6	16	Canella winterana	Wild Cinnamon	Yes	3'-4"	12'-14'	8'-10'	50 Gal	As Shown	5' CT	
	COD			Coccoloba diversifolia	Pigeon Plum	Yes	3'-4"	12'-14'	8'-10'	50 Gal	As Shown	5' CT	
	GUD			Guapira discolor	Blolly	Yes	3'-4"	12'-14'	8'-10'	50 Gal	As Shown	5' CT	
	GYL			Gymnanthes lucida	Crabwood	Yes	3'-4"	12'-14'	8'-10'	50 Gal	As Shown	5' CT	
	KRF			Krugiodendron ferreum	Ironwood	Yes	3'-4"	12'-14'	8'-10'	50 Gal	As Shown	5' CT	
MFR	Myrcianthes fragrans			Simpson Stopper	Yes	NA	12'-14'	8'-10'	50 Gal	As Shown	5' CT		
*	<b>PALMS</b>												
	CON	12	29	Cocos nucifera	Cocnut Palm	No	12"-16"	20'-25' OA	15'-20'	8&B	As Shown	Transplant on Site	
	SAP			Sabal palmetto	Sabal Palm	Yes	12"	10'-12' OA	8'-10'	8&B	As Shown	Stick with Boots on Top	
	THM			Thrinax morrisii	Key Thatch Palm	Yes	6"	8'-10'	4'-8'	8&B	As Shown	Transplant on Site	
	THR			Thrinax radiata	Thatch Palm	Yes	6"	10'-12'	4'-6'	8&B	As Shown	Transplant on Site	
*o	<b>LARGE SHRUBS</b>												
	CAC	5	31	Capparis cynophallophora	Jamaican Caper	Yes	NA	6'-8'	3'-4'	30 Gal	As Shown	Shrub Type	
	CHI			Chrysobalanus icaco	Cocoplum	Yes	NA	24'-36"	24'-36"	30 Gal	As Shown	Shrub Type	
	CLG			Clusia guttifera	Small Leaf Clusia	Yes	NA	6'-8'	3'-4'	30 Gal	As Shown	Shrub Type	
	EUF			Eugenia foetida	Spanish Stopper	Yes	NA	6'-8'	3'-4'	30 Gal	As Shown	Shrub Type	
	RAA			Randia aculeata	Indigo Berry	Yes	NA	6'-8'	3'-4'	30 Gal	As Shown	Shrub Type	
*o	<b>MEDIUM SHRUBS</b>												
	BRL	31	151	Bysonima lucida	Locust Berry	Yes	NA	24'-36"	24'-36"	7 Gal	As Shown		
	CAB			Cassia bahamensis	Bahama Cassia	Yes	NA	24'-36"	24'-36"	7 Gal	As Shown		
	PSN			Psychotria nervosa	Wild Coffee	Yes	NA	24'-36"	24'-36"	7 Gal	As Shown		
	SAB			Sava bahamensis	Maiden Bush	Yes	NA	24'-36"	24'-36"	7 Gal	As Shown		
	SER			Serenoa repens	Saw Palmetto	Yes	NA	24'-36"	24'-36"	15 Gal	As Shown		
*o	<b>SMALL SHRUBS</b>												
	HAM	53	116	Hamelia patens 'compacta'	Dwarf Firebush	Yes	NA	18"-24"	18"-24"	3 Gal	As Shown		
	PLI			Psychotria ligustrifolia	Dwf. Wild Coffee	Yes	NA	18"-24"	18"-24"	3 Gal	As Shown		
	TRF			Tripsacum floridanum	Dwarf Fakahatchee	Yes	NA	18"-24"	18"-24"	3 Gal	As Shown		
	ZAP			Zamia pumila	Coontie	Yes	NA	18"-24"	18"-24"	3 Gal	As Shown		
*o	<b>GROUNDCOVER</b>												
	BOA	367	766	Borrchia arborescens	Sea Ox-Eye Daisy	Yes	NA	12"-18"	12"-18"	1 Gal	As Shown		
	ERL			Ermodia littoralis	Golden Creeper	Yes	NA	12"-18"	12"-18"	1 Gal	As Shown		
	FIM			Ficus microcarpa 'Green Island'	Ficus 'Green Island'	No	NA	18"-24"	18"-24"	3 Gal	As Shown		
	LAD			Lantana depressa	Pineland Lantana	Yes	NA	12"-18"	12"-18"	1 Gal	As Shown		
	MIS			Microsorium scolopendrium	Wart Fern	No	NA	12"-18"	12"-18"	1 Gal	As Shown		
STJ	Stachytarpheta jamaicensis			Portenweed	Yes	NA	18"-24"	18"-24"	1 Gal	As Shown			
*o	<b>TURF</b>												
		800	675	Arachis glabrata	Perennial Peanut	No	NA			SF			

LANDSCAPE REQUIREMENTS PHASE ONE		
<b>Minimum Landscape Areas</b>	Required	Provided
Site Area 16,826 SF x 20% Minimum Area of Building Site	3365 SF/20%	3677 SF
<b>Minimum Native Plant Requirement 70%</b>	<b>Total Plants Provided</b>	<b>Percent Provided</b>
Native Plants	331	70%
Exotic Plants	143	30%
<b>Total Native &amp; Exotic Plants</b>	<b>474</b>	

Minimum Standards Landscaping Along Right-of-Way			
148 LF Property Line Abutting Street Frontage/100 LF = 1.48			
40 Plant Units x 1.48 = 60 Plant Units Required			
	<b>Total Plants Provided</b>	<b>x Plant Units</b>	<b>Plant Units Provided</b>
Canopy Trees	0	10	0
Ornamental Trees	0	3	0
Shrubs	97	1	97
<b>Total Plant Units Provided</b>	<b>97</b>		<b>97</b>
<b>Minimum Parking Lot Perimeter Landscaping</b>			
10' Perimeter Landscape Width Buffer			
70 LF Parking Lot Buffer/35 LF = 2.00			
	<b>Total Plants Required</b>	<b>Total Plants Provided</b>	
1 Canopy Tree x 2.00	2 Canopy Trees	2 Canopy Trees	
10 Shrubs x 2.00	20 Shrubs	97 Shrubs	

LANDSCAPE REQUIREMENTS PHASE TWO			
<b>Minimum Landscape Areas</b>	Required	Provided	
Site Area 38,763 SF x 20% Minimum Area of Building Site	7752 SF/20%	7986 SF	
<b>Minimum Native Plant Requirement 70%</b>	<b>Total Plants Provided</b>	<b>Percent Provided</b>	
Native Plants	776	70%	
Exotic Plants	333	30%	
<b>Total Native &amp; Exotic Plants</b>	<b>1109</b>		
<b>Minimum Standards Landscaping Along Right-of-Way</b>			
380 LF Property Line Abutting Street Frontage/100 LF = 3.8			
40 Plant Units x 1.48 = 60 Plant Units Required			
	<b>Total Plants Provided</b>	<b>x Plant Units</b>	<b>Plant Units Provided</b>
Canopy Trees	5	10	50
Ornamental Trees	5	3	15
Shrubs	460	1	460
<b>Total Plant Units Provided</b>	<b>470</b>		<b>525</b>
<b>Minimum Parking Lot Perimeter Landscaping</b>			
10' Perimeter Landscape Width Buffer			
215 LF Parking Lot Buffer/35 LF = 6.00			
	<b>Total Plants Required</b>	<b>Total Plants Provided</b>	
1 Canopy Tree x 6.00	6 Canopy Trees	8 Canopy Trees/10 Palms	
10 Shrubs x 6.00	60 Shrubs	409 Shrubs	
<b>Nonvehicular Open Space (NOS) Landscaping Requirements</b>			
20% or 7752 SF of Site Nonvehicular Open Space			
Requires 4 Trees/2000 SF of NOS			
	<b>Total Trees Required</b>	<b>Total Trees Provided</b>	
7752 SF/2000=3.87 SF x 4 Trees	15.48	16 Trees	

**ELIZABETH NEWLAND**  
LANDSCAPE ARCHITECTURE, LLC

2525 Ponce de Leon Blvd., Suite 300  
Coral Gables, Florida 33134  
305.481.6301  
liznewland@bellsouth.net

Seal:

ELIZABETH NEWLAND  
Registered Landscape Architect  
# LA0001288  
State of Florida

Consultants:

Revisions:

**Dockmaster Building**  
GARRISON BIGHT  
KEY WEST, FLORIDA

Drawing Size: 24x36 Project #:   
Drawn By: EN Checked By: EN

Title: **LANDSCAPE PLANTING PLAN**

Sheet Number:

**L-2.0**

Date: APRIL 30, 2013

