

638 United Street

Mary Ann Matter



07.17.2018

United Street elevation



United Street Residences, Key West







TOW-AWAY
ZONE

US Dept of State Geographer

© 2018 Google
© 2018 Google

Google Earth

24°32'56.83" N 81°47'38.51" W elev 44 ft eye alt 1

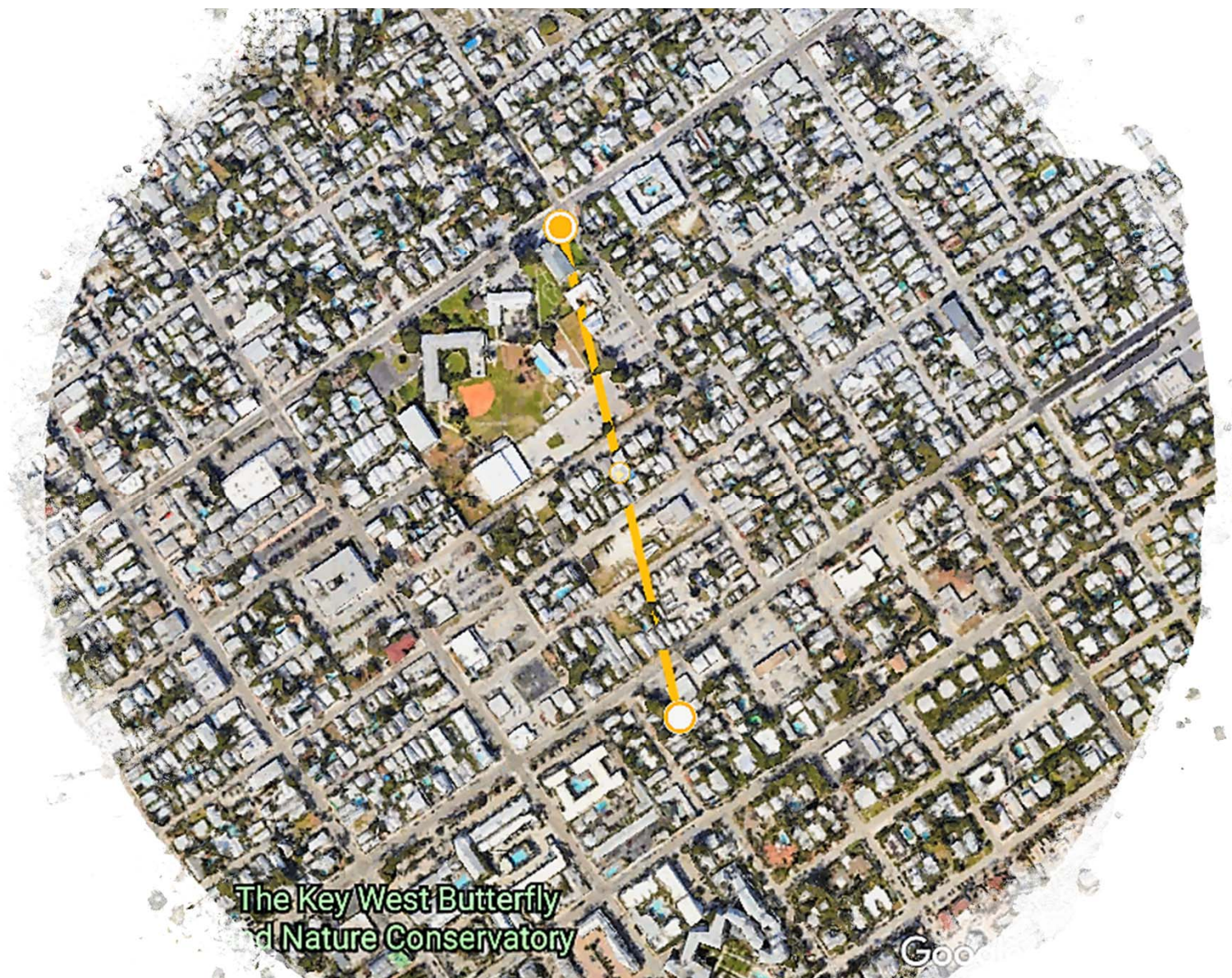
[Report a problem](#)











The Key West Butterfly
and Nature Conservatory

Google

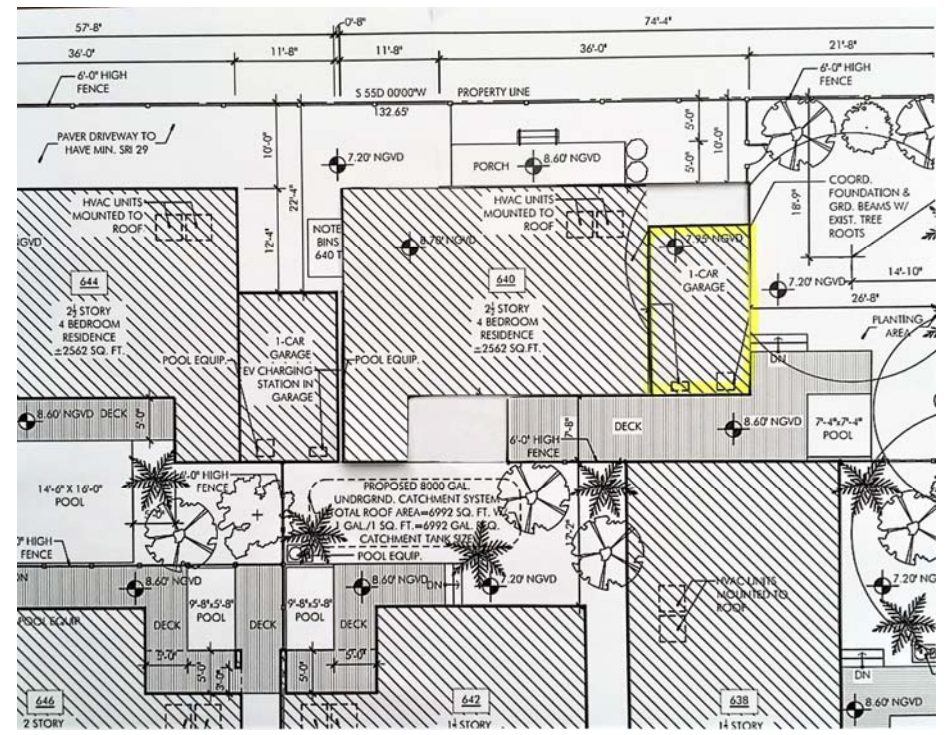
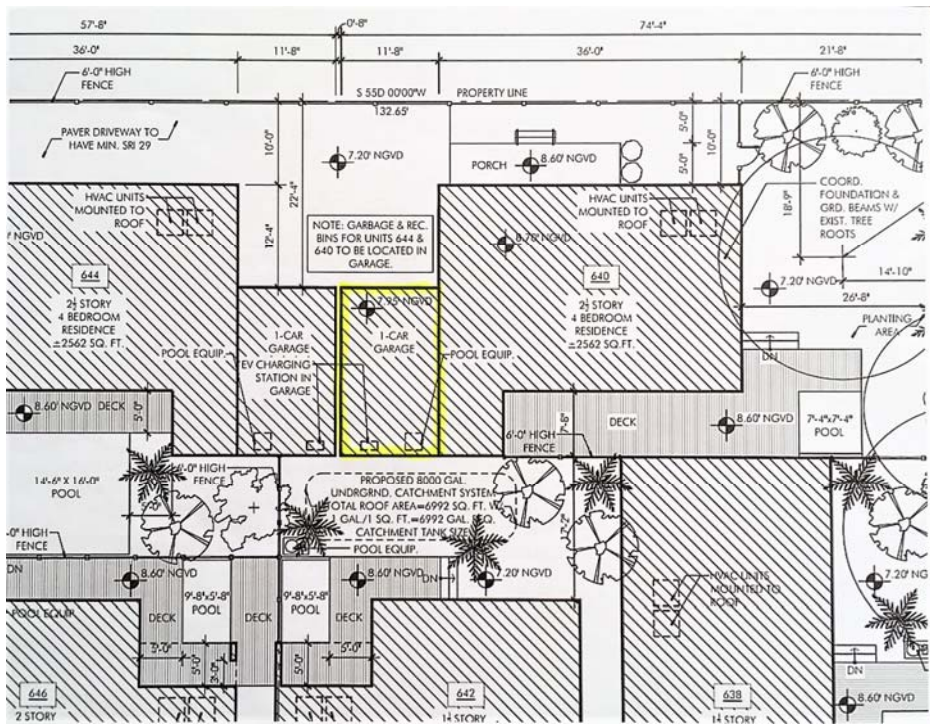
Option #1

Rearrange the plan putting the two tallest structures on the far East end, closest to Villa Mil



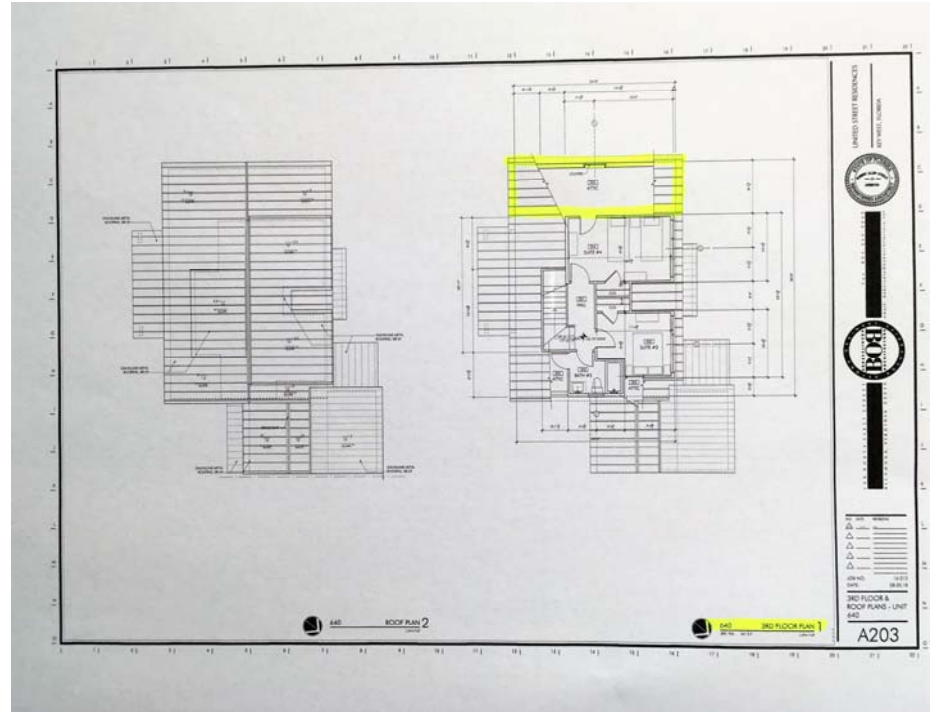
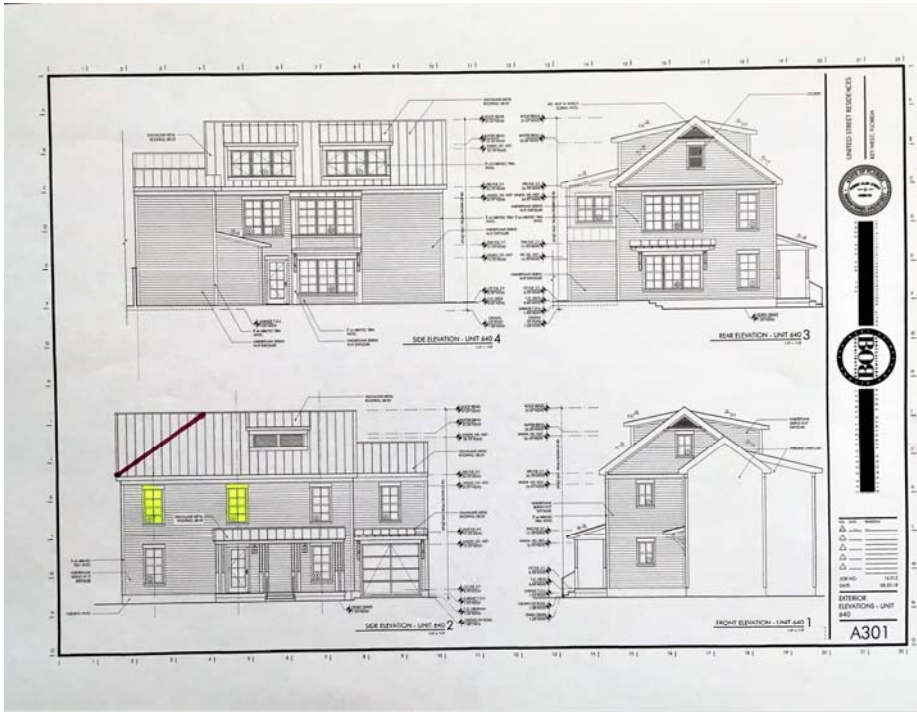
Option #2

Relocate the garage on building #640 allowing for a reduced elevation on the West end



Option #3

Alter the attic space roofline and eliminate south facing windows



Option #4

Do nothing, continue to use as a vehicle/boat storage lot



Thank You