

NOTES:

1. FACILITY LOCATION:
141 HIGHWAY US-1,
ROCKLAND KEY, FLORIDA 33040
2. OWNER:
CITY OF KEY WEST
627 PALM AVENUE
KEY WEST, FLORIDA 33040
3. CONTACT PERSON:
GARY BOWMAN
PUBLIC WORKS DIRECTOR
PHONE: (305) 296-3901
EMAIL: gbowman@keywestcity.com
4. PROPERTY INFORMATION:
TOTAL ACREAGE: 4.0 ACRES
BASE FLOOD ELEVATION = 10.0 FT NGVD
FEMA MAP #: 12087C1733 H
FLOOD ZONED: AE
ZONING: INDUSTRIAL
5. RETAINING WALLS MAY BE REPLACED WITH
COMPACTED EARTHEN SLOPES NO STEEPER
THAN 3H:1V.
6. ALL SIDE SLOPES SHALL BE NOT STEEPER THAN
3H:1V.
7. THE SPOT ELEVATIONS ARE PRELIMINARY.
CONTRACTOR IS RESPONSIBLE FOR FINAL
GRADING.
8. ACCESSIBLE PARKING LOT SIGNS AND SPACES
SHALL BE PLACED ACCORDING TO THE FLORIDA
ACCESSABILITY CODE AND ZONING REQUIREMENTS.
9. SURVEY DATA BASED ON A SURVEY PROVIDED BY:
AVIROM & ASSOCIATES, INC.
SURVEYING AND MAPPING
50 S.W. 2ND AVENUE, SUITE 102
BOCA RATON, FLORIDA 33432
TEL: (561) 392-2594
DATED: 08/08/05

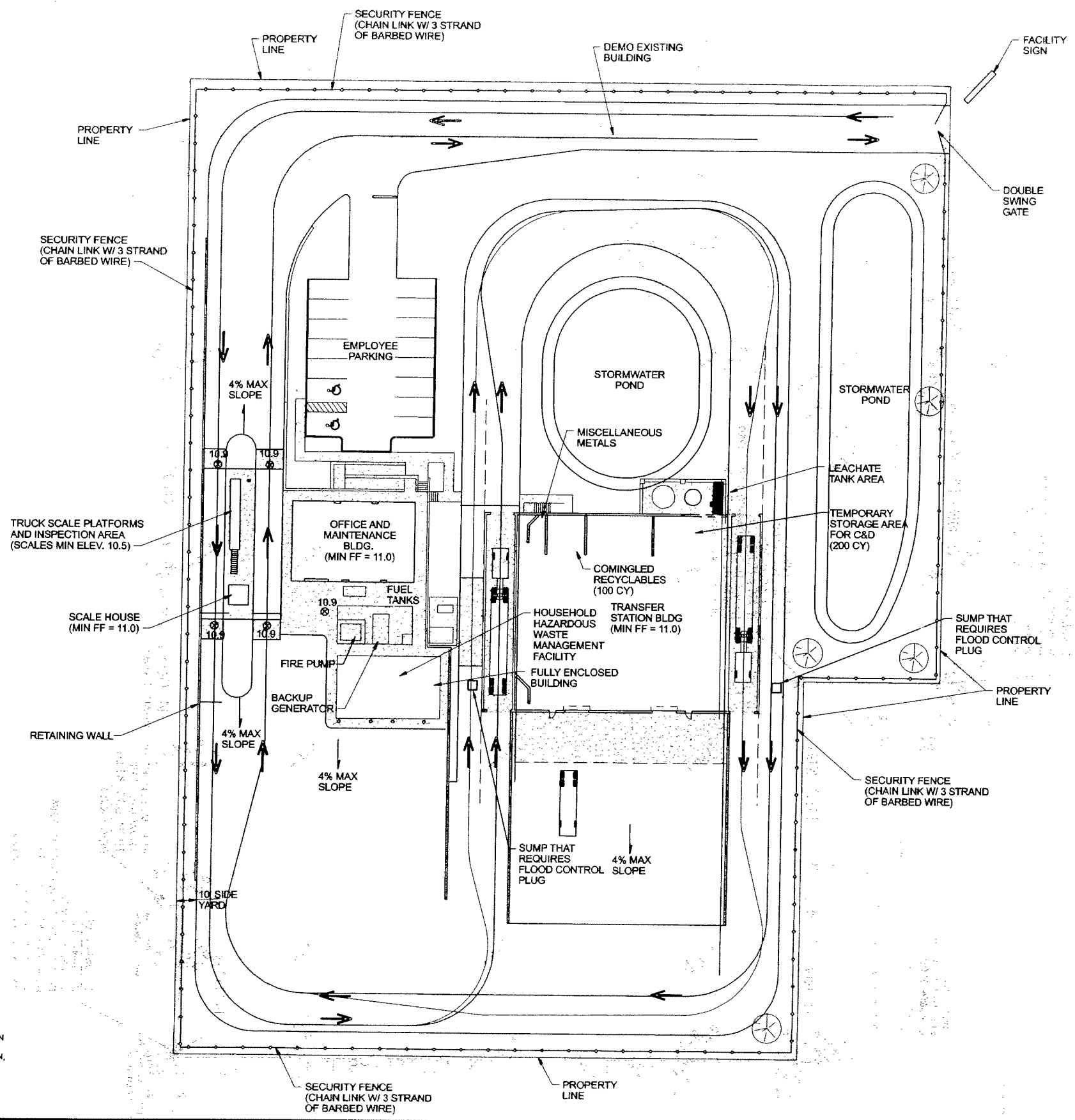
LEGEND:

- RETAINING WALL
- ASPHALT PAVEMENT
- CONCRETE PAVEMENT/
SIDEWALK
- TRAFFIC DIRECTION
- TREE

RECORD DRAWINGS

THESE RECORD DRAWINGS HAVE BEEN PREPARED, IN PART, ON THE BASIS OF INFORMATION COMPILED BY OTHERS. THEY ARE NOT INTENDED TO REPRESENT IN DETAIL THE EXACT LOCATION, TYPE OF COMPONENT NOR MANNER OF CONSTRUCTION. THE ENGINEER WILL NOT BE RESPONSIBLE FOR ANY ERRORS OR OMISSIONS WHICH HAVE BEEN INCORPORATED INTO THE RECORD DRAWINGS.

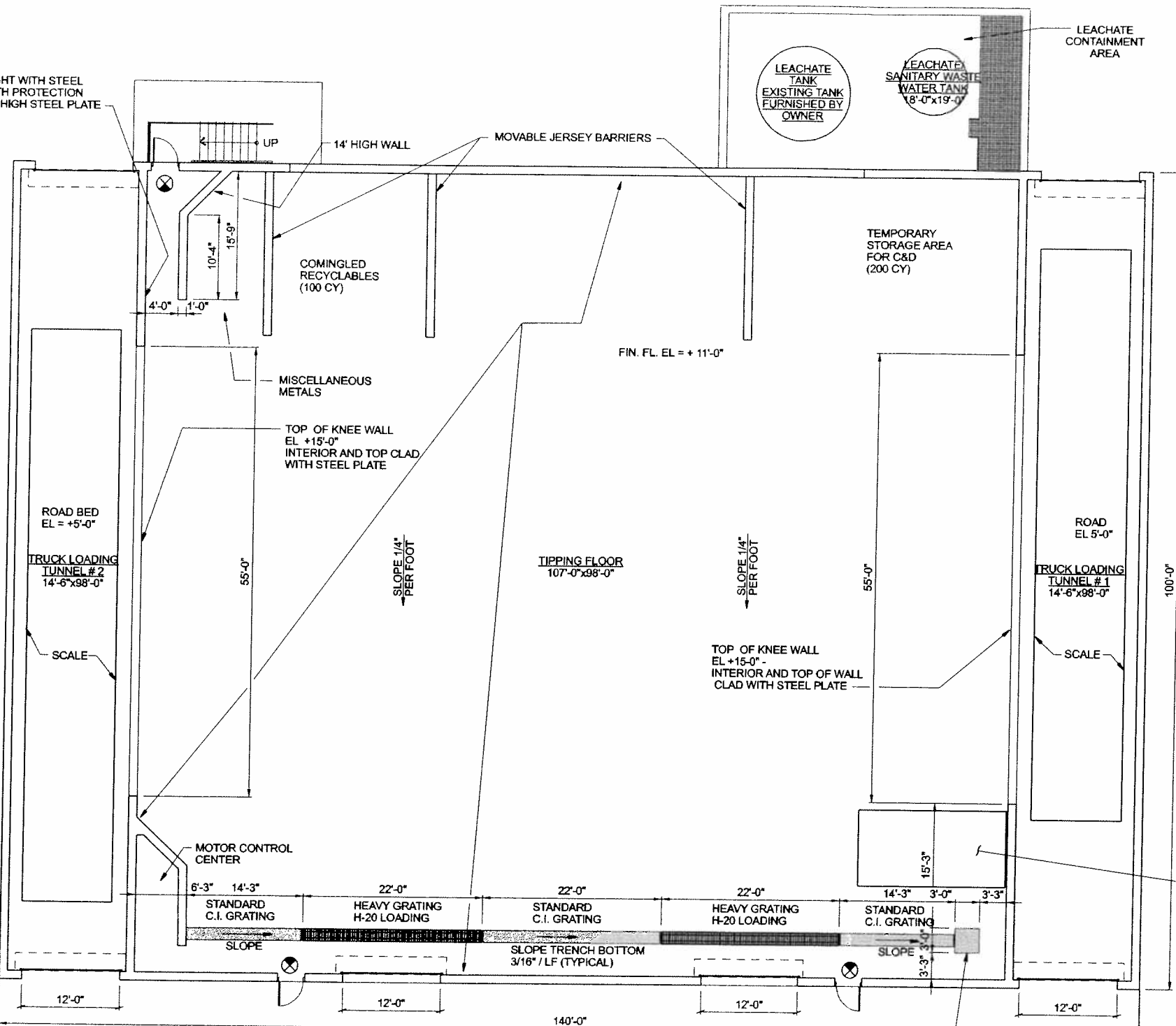
DSGN				APPROVALS:		VERIFY SCALE			DWG
DR						BAR IS ONE INCH ON ORIGINAL DRAWING.			FIG. G-1
CHK						0" = 1"			DATE
APVD						IF NOT ONE INCH ON THIS SHEET, ADJUST SCALES ACCORDINGLY.			SEPTEMBER 2005
	NO.	DATE	REVISION	BY	APVD		CITY OF KEY WEST SOLID WASTE TRANSFER STATION ROCKLAND KEY, FLORIDA	PROJ	322025.4A



RECEIVED
JAN 22 2010
D.E.P. South District

OVERALL SITE PLAN

FULL HEIGHT WITH STEEL PLATE WITH PROTECTION WITH 4'-0" HIGH STEEL PLATE (TYPICAL)

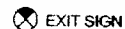


NOTE:

1. TRUCK LOADING TUNNEL SCALES SHALL BE INSTALLED AT ROAD GRADE ELEVATION. THE SPACE ALONG EACH SIDE OF THE SCALES SHALL BE COVERED WITH DIAMOND PLATE AT SCALE LEVEL. THE DIAMOND PLATE SHALL BE READILY REMOVABLE FOR CLEANING BENEATH THE SCALES. ACCESS PANELS SHALL BE INCLUDED IN THE SCALE PLATFORMS TO PROVIDE ACCESS FOR CLEANING BENEATH THE SCALES.

TRANSFER BUILDING FLOOR PLAN

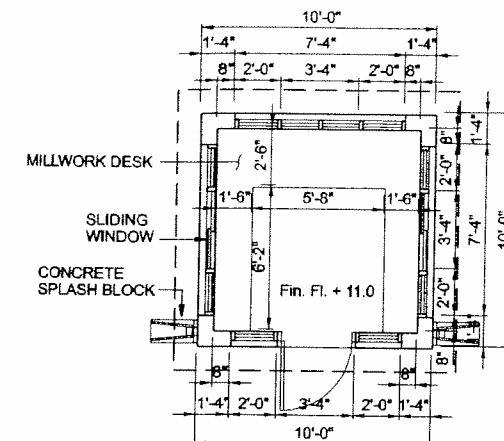
1/8"=1'-0"



COLLECTION BOX WITH 6" OUTLET, TO PREVENT FLOATING AND HEAVIER THAN WATER MATERIAL FROM ENTERING THE DISCHARGE DRAIN, (TYP OF 2)

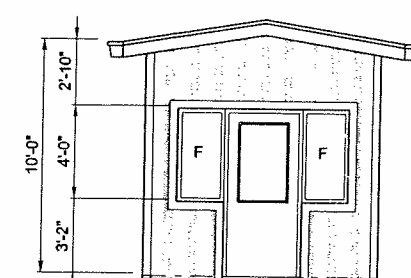
RECORD DRAWINGS

THESE RECORD DRAWINGS HAVE BEEN PREPARED, IN PART, ON THE BASIS OF INFORMATION COMPILED BY OTHERS. THEY ARE NOT INTENDED TO REPRESENT IN DETAIL THE EXACT LOCATION, TYPE OF COMPONENT NOR MANNER OF CONSTRUCTION. THE ENGINEER WILL NOT BE RESPONSIBLE FOR ANY ERRORS OR OMISSIONS WHICH HAVE BEEN INCORPORATED INTO THE RECORD DRAWINGS.



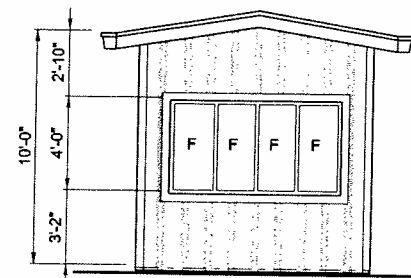
SCALEHOUSE FLOOR PLAN

1/4"=1'-0"



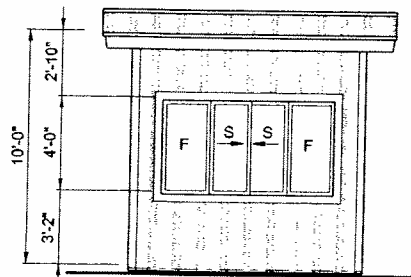
SOUTH ELEVATION

1/4"=1'-0"



NORTH ELEVATION

1/4"=1'-0"



EAST / WEST ELEVATION

1/4"=1'-0"

DSGN	Engineer
DR	Drawn By
CHK	10na141d_322025.dgn
APVD	Approved By

NO.	DATE	REVISION
1	01/10	OPERATIONS & MAINTENANCE MANUAL UPDATE

RS	RB
BY	APVD

APPROVALS:

CH2MHILL
3011 SW WILLISTON ROAD
GAINESVILLE, FLORIDA 32608
EB0000672 AAC001992
CDD_SentNo

VERIFY SCALE
BAR IS ONE INCH ON ORIGINAL DRAWING.
0" 1"
IF NOT ONE INCH ON THIS SHEET, ADJUST SCALES ACCORDINGLY.

CITY OF KEY WEST
SOLID WASTE TRANSFER STATION
ROCKLAND KEY, FLORIDA

ARCHITECTURAL
TRANSFER STATION & SCALEHOUSE
FLOOR PLAN

DWG	FIG. G-2
DATE	SEPTEMBER 2005
PROJ	322025.4A