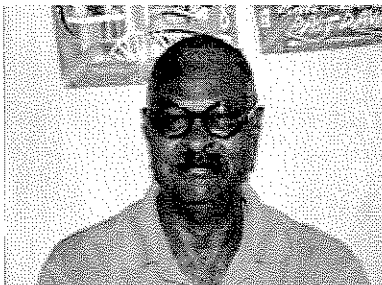


## **Who We Are**

In addition to thanking you for your support, we thought we would give you more insight into who we are, what we do, and how you can help. We realize there is little known about APSMC, even though we have been serving Monroe County's highest risk kids and their families since 1999. Our first contract with the Department of Juvenile Justice was Conditional Release. APSMC developed the first Conditional Release Program operated in Monroe County. Conditional Release or Aftercare is to juveniles what parole is to adults. If youth are unable to have a positive response to community interventions, Residential Commitment is the only alternative. APSMC maintains contact with the youth and their families while he/she is in commitment and assists in helping the youth's re-entry back into the community for the first six months after release.

APSMC receives funding through the Department of Juvenile Justice (DJJ) and is licensed by the Department of Children and Family Services (DCF). DJJ controls the new Redirection services program and funnels the funds through Evidence Based Associates (EBA). EBA provides both technical and service support to APSMC and with the additional funding provided through EBA from the Redirection Program APSMC will be able to help 72 youths and families this year and as many as 20 conditional release youths. Additionally, the University of Miami also provides training in BSFT and support to APSMC to help make this all possible.

## **Staff**



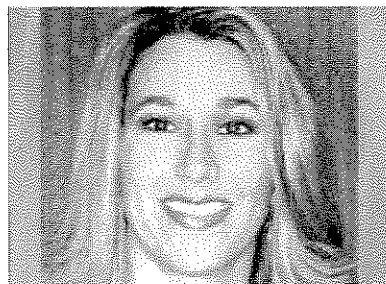
Billy Davis, MS  
*Executive Director / Founder*



Michelle Norwood, BA  
*Program Administrator*



Kathleen Bautz, MA  
*Redirection Program*  
*Brief Strategic Family Therapist*



Elizabeth Guinea, MA, RMHCI  
*Redirection Program*  
*Brief Strategic Family Therapist*



Alissa Mitchell, BA  
*Case Manager*

---

[Home](#) • [Who We Are](#) • [Services](#) • [Mentoring](#) • [Events](#) • [Contact Us](#)

© 2009 A Positive Step of Monroe County, Inc.

## BAHAMA VILLAGE MENTORING PROGRAM

A Positive Step of Monroe County (APS) has been established for 12 years and has played a vital role in the direct provision of day treatment and conditional release services while also supporting local in school and community based mentoring programs. APS of Monroe County covers the entire county and offers only evidenced based services.

The Bahama Village Mentoring Program would provide additional case management and mentor recruitment to create an opportunity for the matching of mentors with youth who are residents of the Bahama Village community, or youth from the Bahama Village community who are reentering the community from other programs. This Program will also involve the close coordination of services through the South Florida Workforce Development Board, which provides career coaching, assistance in completing high school or attaining a GED, job skills training, and connects youth to jobs.

We would estimate that at least 50 youth could benefit from these services during a calendar year. Additionally, as the services are community based, location for services would include, but not be limited to, schools, churches and social service agencies. The Circuit's existing collaborations and structure will greatly contribute to the effective communication between partners and the assurance of a high quality of service delivery.

This Project would be designed to serve youth living in Bahama Village who are currently underserved by mentoring programs and are from the highest crime area in Key West. It is anticipated that our proposed mentoring program will be successful in reducing the numbers of youth committed to residential programs, however, when necessary will also provide for a more effective process for transitioning youth home from residential programs. Referrals to the program will first be DJJ referred youth, ages 12 up to age 19; secondly, siblings and other youth identified as "high risk" by the staff at the Frederick Douglas Gym. Youth participation shall be voluntary and referrals will be made directly by the Department.

APSMC is seeking mentors and volunteers to help us implement and execute this Program. We will provide screening, testing and training for all those individuals who are interested in participating as mentors. Other volunteer positions are currently available to other individuals who wish to assist in the Program.

For more information,  
please contact Billy Davis at (305) 304-1969.

## Services

Family Therapy - APSMC provides in-home family therapy to the youth and their families through the use of the Brief Strategic Family Therapy (BSFT) Evidence Based Curricula. The University of Miami provides all BSFT training and supervision. APSMC is currently serving 24 youths and their families in Monroe County.

Case Management Services - Juveniles are assigned a Case Manager as soon as they are admitted to APSMC. The youth Case Manager ratio is 10:1. APSMC is now servicing 10 youths on Conditional Release with case management. Each Case Manager is the point of contact for all stakeholders, including the Juvenile Probation Officer (JPO) involved in the youth's acclimation into mainstream society and helps to coordinate the following:

- School
- Mental Health
- Urine Screens
- Jobs
- Restitution
- Community Services
- Gender Specific

Re-entry into the Monroe County School System - APSMC works closely with the liaison for the Monroe County School District. The liaison starts to monitor the youngster's academics from the time of their first court appearance until they are released from the juvenile commitment program. The benefit of having a school liaison is to guarantee the youth remains in school and/or attends academic classes while in a commitment program and returns to school after release. APSMC is in monthly contact with the youth and their families while the youth is in commitment. Once the youth is released, APSMC coordinates re-entry into the Monroe County school system within 24 hours of their return home (excluding weekends and holidays).

Mental health and substance abuse counseling services for the youth and their families - APSMC is not a mental health program. However, during the intake if mental health services are indicated or during the monthly contacts with the youth's commitment program mental health follow-up is recommended, we refer to one of the mental health clinics in the county. Additionally, APSMC has sought out private providers and arranged a sliding scale fee that APSMC pays if the wait is long at one of the local clinics.

APSMC only provides substance abuse education and relapse prevention; we now

refer serious cases to the local mental health clinics. Support is offered through APSMC and the 12-Step community.

Tutorial services for clients in need of additional academic assistance - APSMC provides academic assistance through the Monroe County School District or through volunteers. We also assist the youth with learning materials.