



THE CITY OF KEY WEST
Tree Commission
Post Office Box 1409 Key West, FL 33041-1409
Telephone: 305-809-3764

October 11, 2017

725 Duval Street LLC
45 NW 21st Street
Miami FL 33127

To Whom It May Concern:

The City of Key West Tree Commission recently considered your permit application, T17-8622 for Final Landscape Plan Approval with Tree Removal for property located at 725 Duval Street at their regularly scheduled meeting on October 10, 2017.

The Tree Commission **Approved** the **Final Landscape Plan with Tree Removal** for the above-mentioned property. The approval includes the removal of (7) Christmas Palm Trees and (1) Sabal Palm Tree to be replaced with (8) native palms, minimum 4ft tall, to be planted on-site.

The permit to actually remove the trees will not be issued until demolition and/or building permits have been issued for the project.

If you have any questions please call the office at (305) 809-3768.

Sincerely,

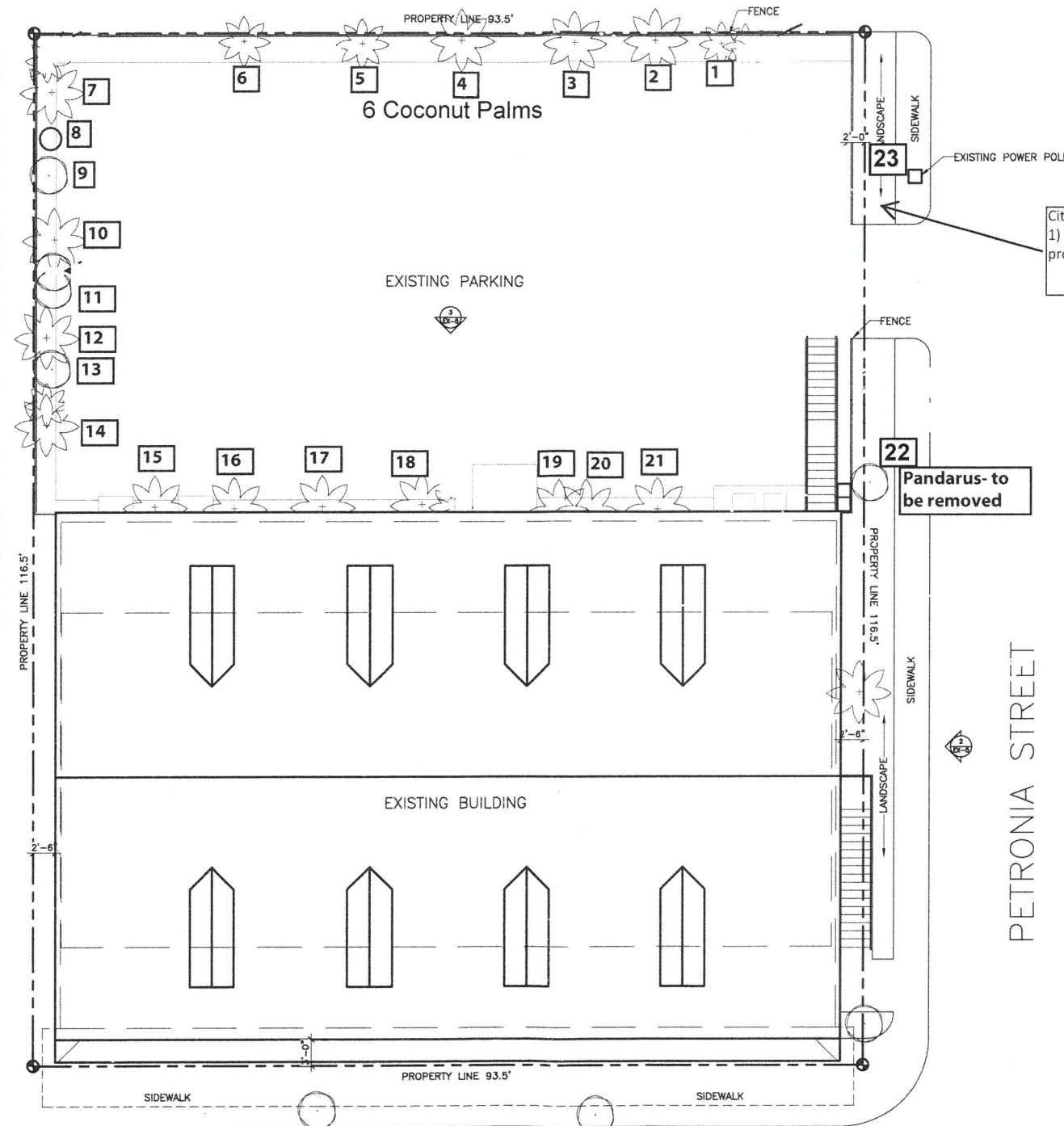
Robin Robinson
Vice-Chair

Karen DeMaria
Urban Forestry Program Manager
City of Key West
1300 White Street
Key West, FL 33040
Office: 305/809-3768
Fax: 305/809-3978
kdemaria@cityofkeywest-fl.gov

cc: Owen Trepanier

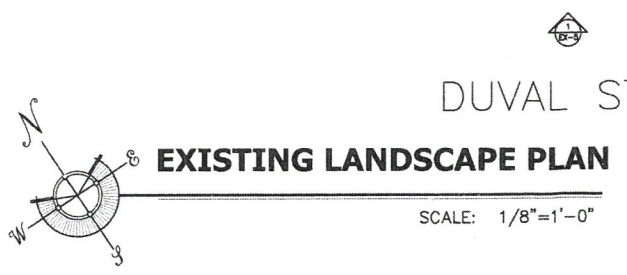
DUPONT LANE

#	Botanical Name	Common Name	DBH	Ht	Spread	Action
1	<i>Cocos nucifera</i>	Coconut Palm	10"	20'	6-8'	Preserve
2	<i>Cocos nucifera</i>	Coconut Palm	10"	20'	6-8'	Preserve
3	<i>Cocos nucifera</i>	Coconut Palm	10"	20'	6-8'	Preserve
4	<i>Cocos nucifera</i>	Coconut Palm	10"	20'	6-8'	Preserve
5	<i>Cocos nucifera</i>	Coconut Palm	10"	20'	6-8'	Preserve
6	<i>Cocos nucifera</i>	Coconut Palm	10"	20'	6-8'	Preserve
7	<i>Sabal palmetto</i>	Sabal Palm	10"	20'	7'	Preserve
8	<i>Sabal palmetto</i>	Sabal Palm	14"	10'	7'	Preserve
9	Unknown	Unknown	multi-trunk	12'	12'	Preserve
10	<i>Veitchia Merrilli</i>	Christmas Palm	10"	25'	7'	Preserve
11	Unknown	Unknown	multi-trunk	11'	6'	Preserve
12	<i>Veitchia Merrilli</i>	Christmas Palm	10"	25'	7'	Preserve
13	Unknown	Unknown	multi-trunk	10'	6'	Preserve
14	<i>Veitchia Merrilli</i>	Christmas Palm	10"	25'	7'	Preserve
15	<i>Veitchia Merrilli</i>	Christmas Palm	x3	20'	9'	Remove
16	<i>Veitchia Merrilli</i>	Christmas Palm	x2	20'	10'	Remove
17	<i>Veitchia Merrilli</i>	Christmas Palm	x2	20'	9'	Remove
18	<i>Veitchia Merrilli</i>	Christmas Palm	x2	20'	9'	Remove
19	<i>Sabal palmetto</i>	Sabal Palm	10"	10'	5'	Remove
20	<i>Veitchia Merrilli</i>	Christmas Palm	x2	20'	9'	Remove
21	<i>Veitchia Merrilli</i>	Christmas Palm	x3	20'	11'	Remove
22	<i>Pandanus</i>	Pandanus palm	--	9"	15'	Remove
23	<i>Zamia</i>	Coontie Shrub	--	--	--	Remove



City Right-of-Way Notes
 1) Remove existing Coontie located on City property.

Pandanus- to be removed



DUVAL STREET

PETRONIA STREET

725 Duval Street



Handwritten signature

#	Botanical Name	Common Name	Specifications
20	<i>Psychotria nervosa</i>	Wild Coffee	7 GAL. 3'x3' minimum
8	<i>Sabal palmetto</i>	Sabal Palm	25 GAL. 6-8" OA
75	<i>Ernodea litteralis</i>	Golden Creeper	1 GAL. 12" OC

DUPONT LANE

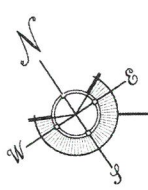
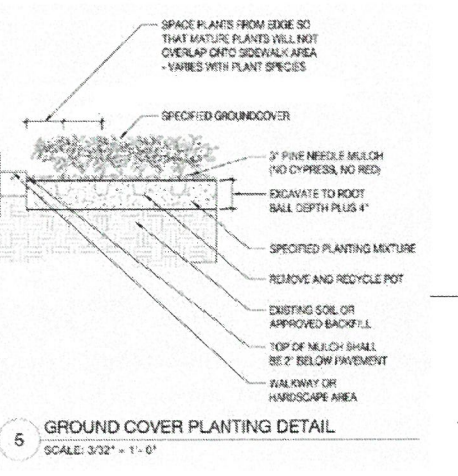
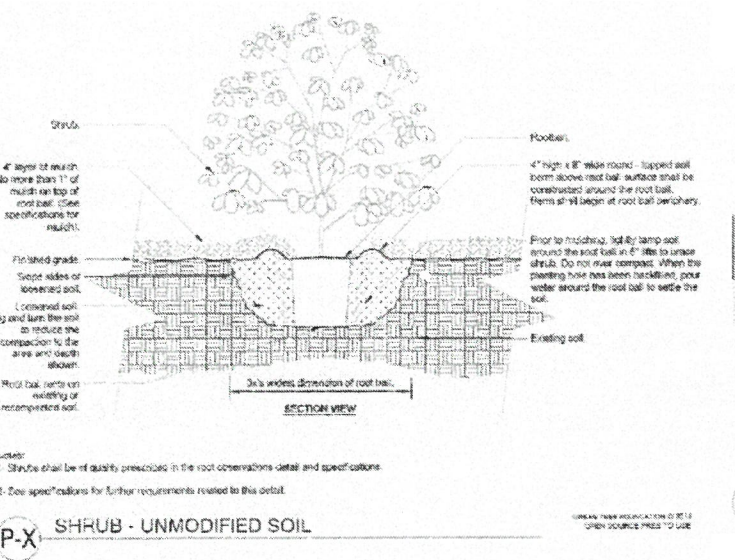
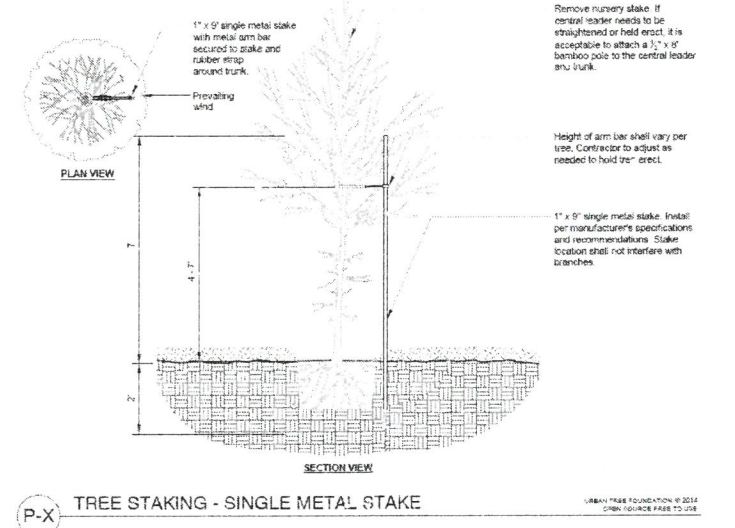
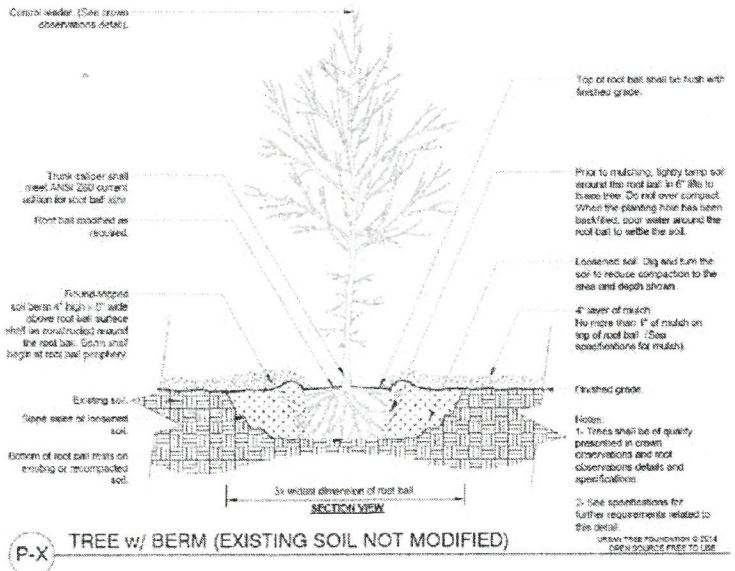
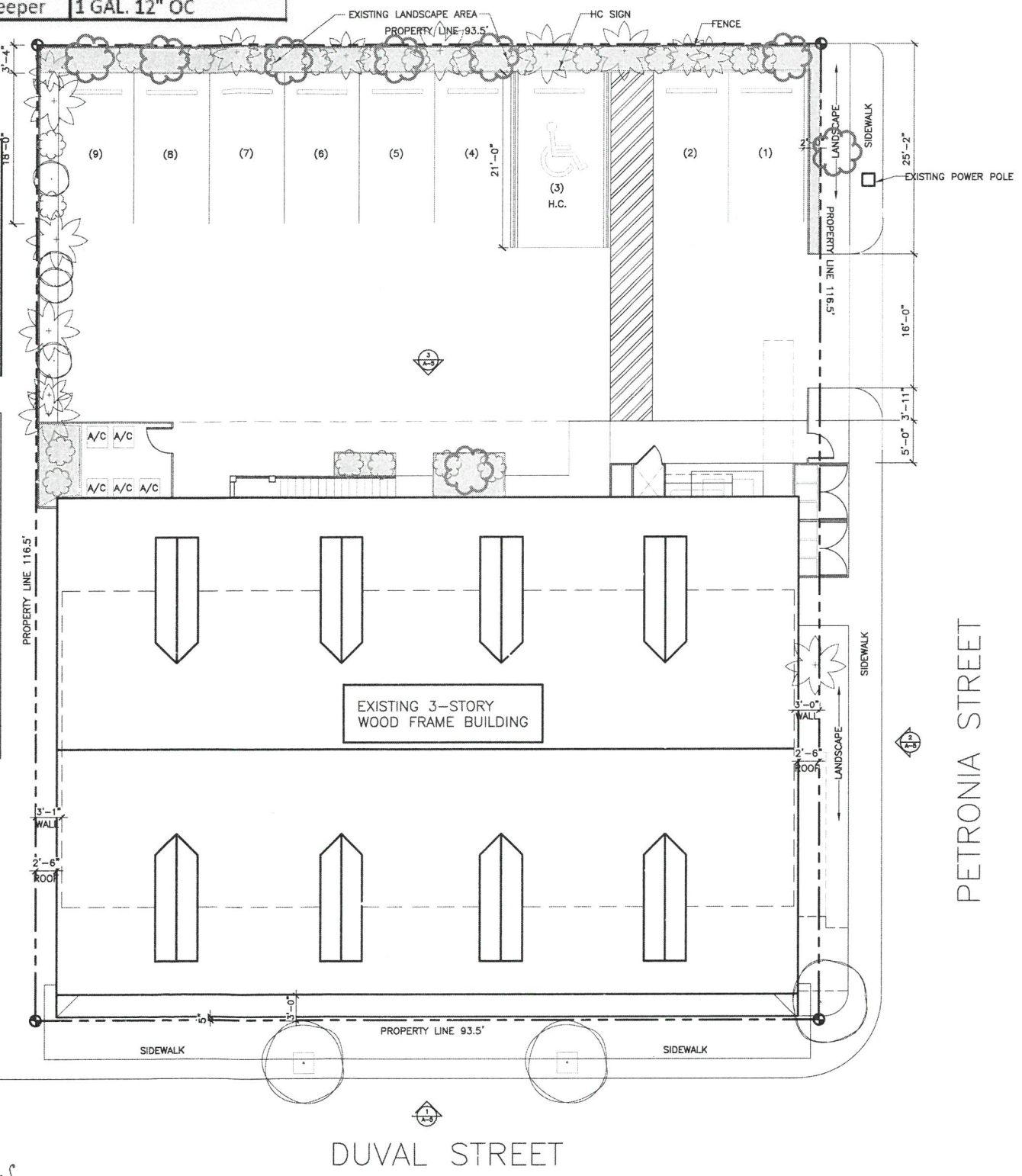
Section 108-518

- Wild coffee (*Psychotria nervosa*)
- Sabal Palms (*Sabal palmetto*)
- Golden creeper (*Ernodea litteralis*)

Existing, preserved trees to remain

LANDSCAPE NOTES

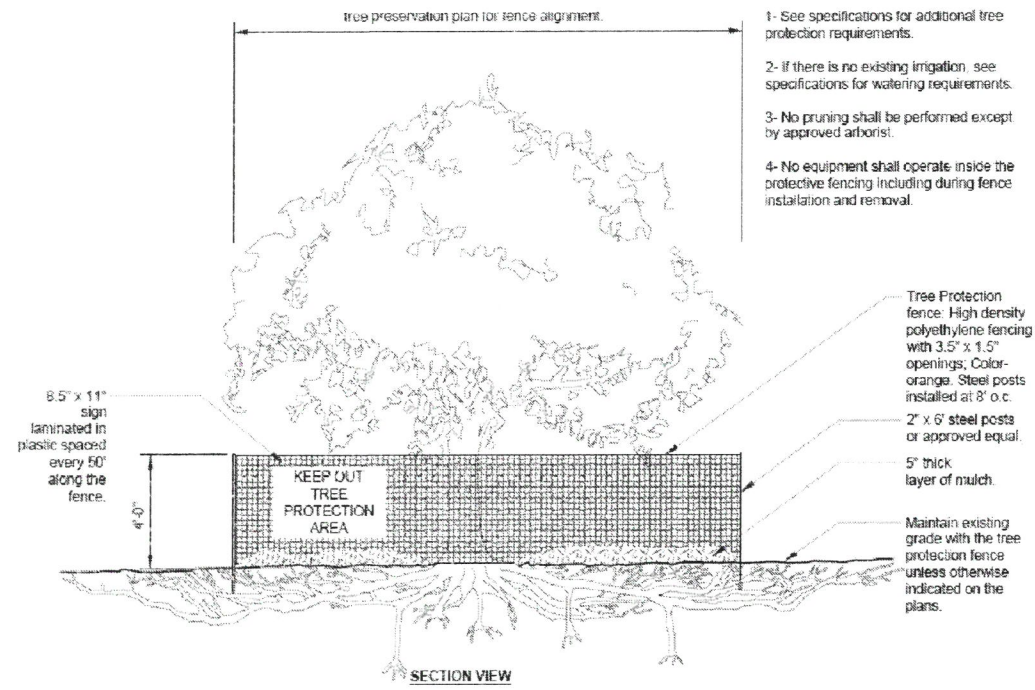
- Tree planting shall comply with details herein and the International Society of Arboriculture (ISA) standards.
- The owner shall be responsible for the establishment, maintenance, and vigor of plant material in accordance with the design intent and as appropriate for the season of the year.
- Tree maintenance shall be in accordance with the American National Standards for Tree Care Operations, ANSI A300 and the standards of the International Society of Arboriculture (ISA).
- Tree staking materials, if used, shall be removed after (1) growing season and not more than (1) year after installation.
- No equipment shall be cleaned, or harmful liquids deposited within the limits of the root zone of trees which remain on site.
- No signs, wires, or other attachments shall be attached to any tree to remain on site.
- Vehicle and construction equipment shall not park or drive within the limits of the drip line.
- No trenching shall be allowed within the drip-line of a tree, unless approved by the City.
- The developer is responsible for all actions of his contractors and subcontractors until the improvements are accepted by the City.
- Landscape irrigation shall be provided by hose end yard sprinklers, handheld hose or watering can to all new plantings at the following rate: Daily for 1 month, every other day for 3 months, then weekly until established.



PROPOSED LANDSCAPE PLAN

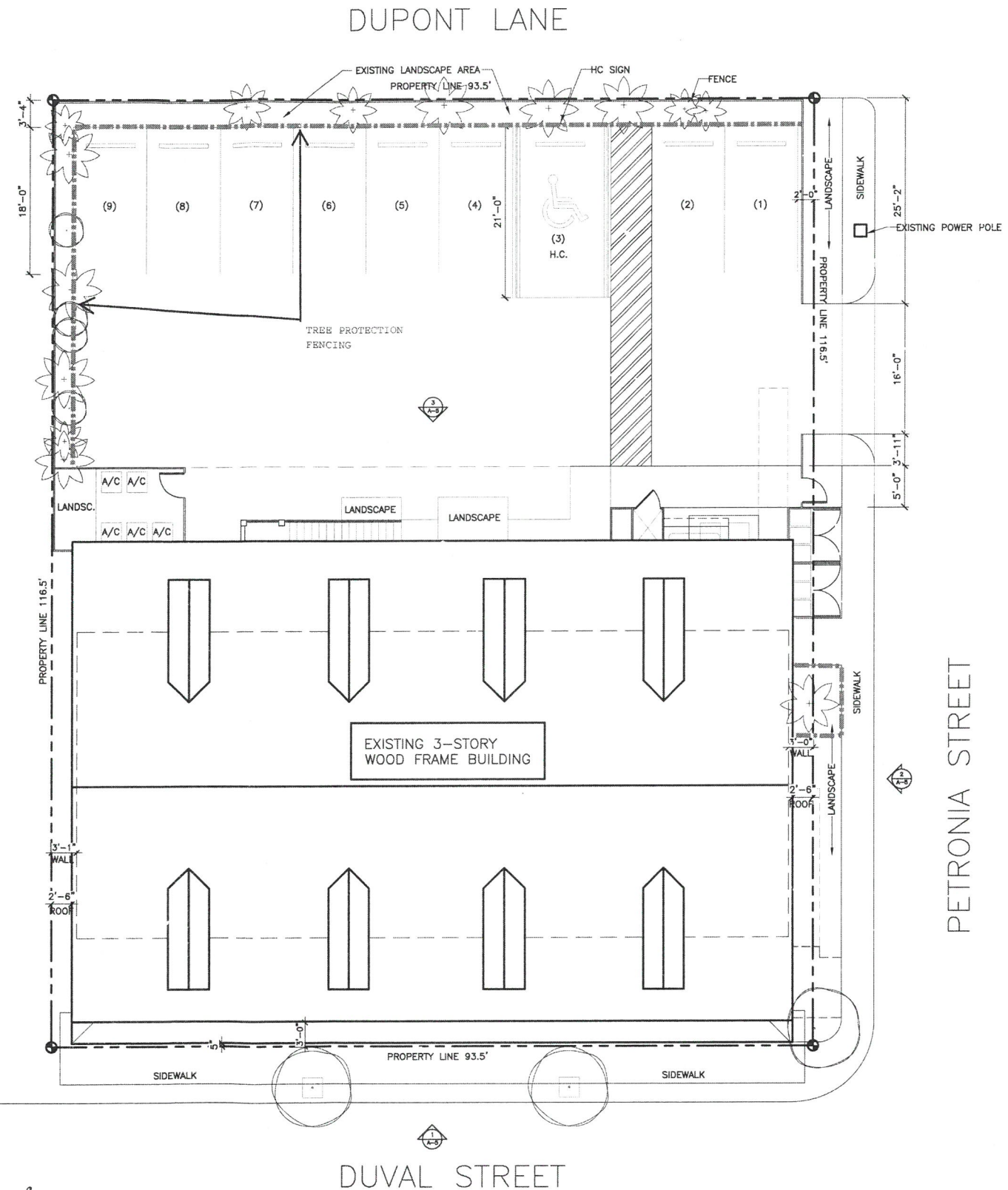
SCALE: 1/8"=1'-0"

725 Duval Street



S-X TREE PROTECTION

URBAN TREE FOUNDATION © 2014
OPEN SOURCE FREE TO USE



SCALE: 1/8"=1'-0"

725 Duval Street

