

## **Compositing Shed KW Mounted Patrol**

### **Project Package**

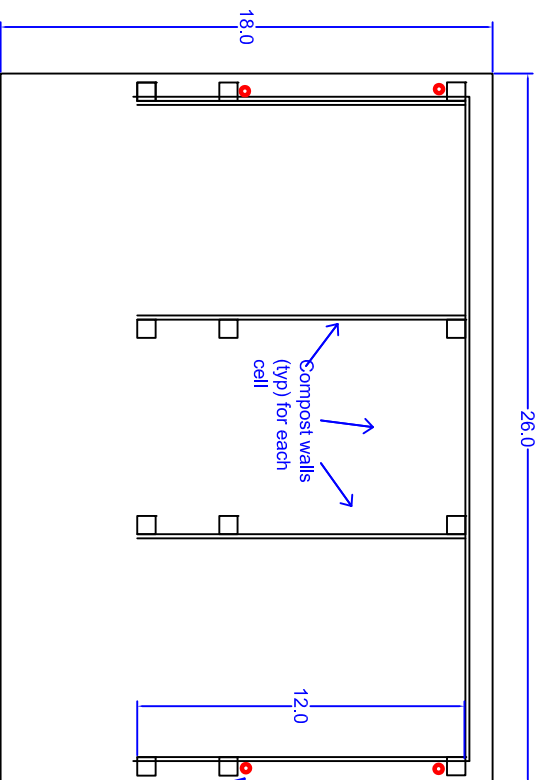


Project Description/ Summary: The Key West Police Department maintains 4 horses as a part of their mounted patrol program. These horses are stabled at the Old Navy Mess Hall on the Truman Waterfront property. Each horse generates 50 lbs of manure each day and each week 4 cyds of manure is deposited in a dumpster and transported to the Central Landfill in Pompano Beach. This project intends to construct a facility to compost this material and make available free to the citizens of Monroe County.



Site 1 Option  
(preferred)

Proposed Site



26.0

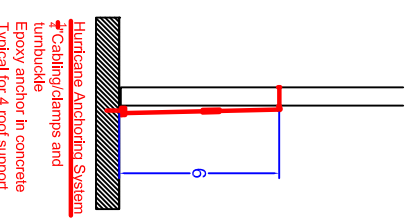
18.0

Compost walls  
(typ) for each  
cell

12.0

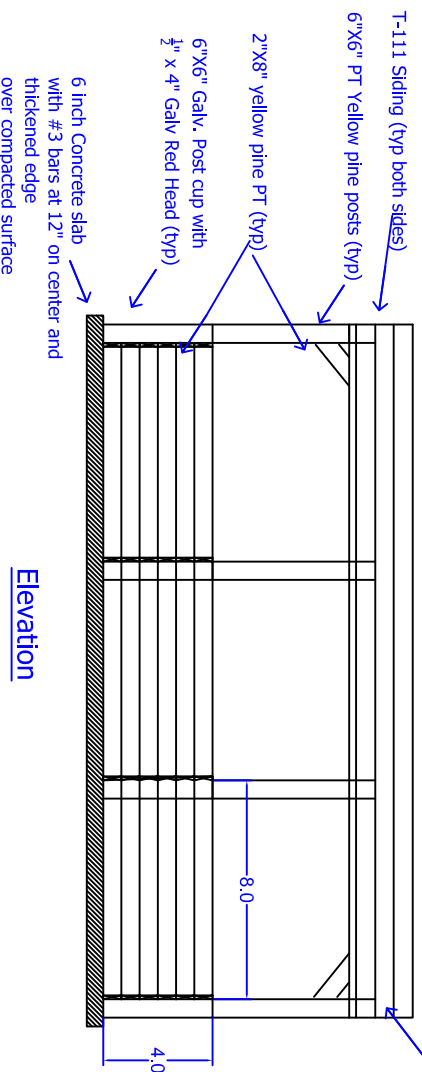
Hurricane  
Anchor System  
see detail

- Notes:
1. All wood framing members (ridge beam, rafters and posts) shall have hurricane straps
  2. All wood shall be Pressure treated (PT) except wood walls directly in contact with compost
  3. All dimensions are in feet



**Hurricane Anchoring System**  
 Cable/clamps and turnbuckle  
 Epoxy anchor in concrete  
 Typical for 4' roof support columns

Plan



Roof:  $\frac{5}{8}$ " Exterior plywood  
 Peel and Stick Ice and water shield  
 Roll Shingle with glue edges and nailed with  $\frac{3}{4}$ " roofing nails

Ridge Beam: 3 ea: 2"x8" PT Yellow pine

T-111 Siding (typ both sides)

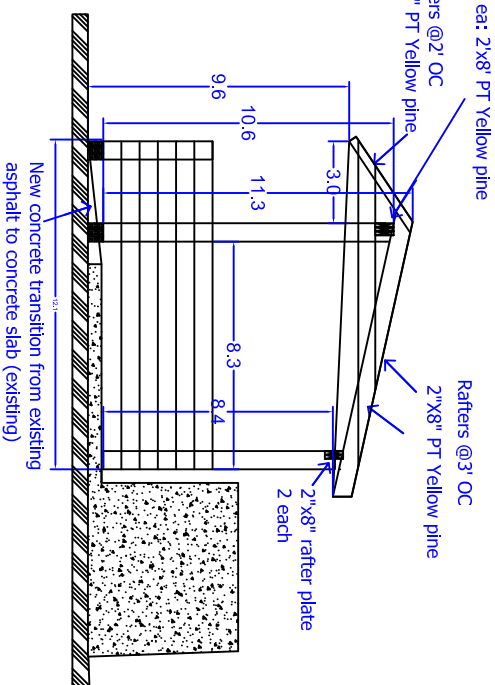
6"x6" PT Yellow pine posts (typ)

2"x8" yellow pine PT (typ)

6"x6" Galv. Post cup with  
 $\frac{1}{2}$ " x 4" Galv Red Head (typ)

6 inch Concrete slab  
with #3 bars at 12" on center and  
thickened edge  
over compacted surface

Elevation



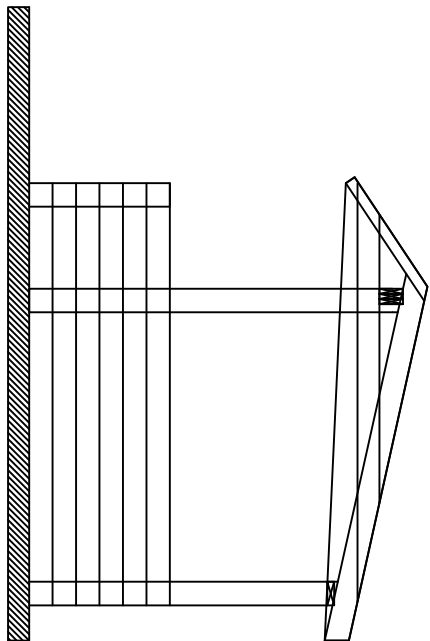
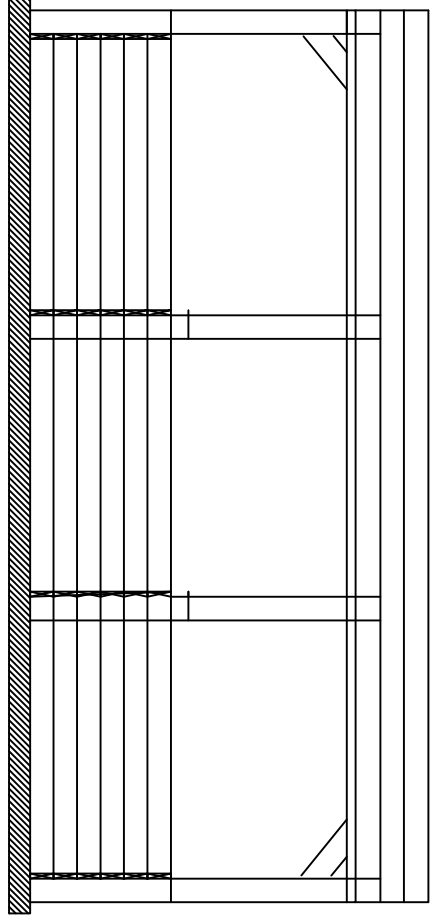
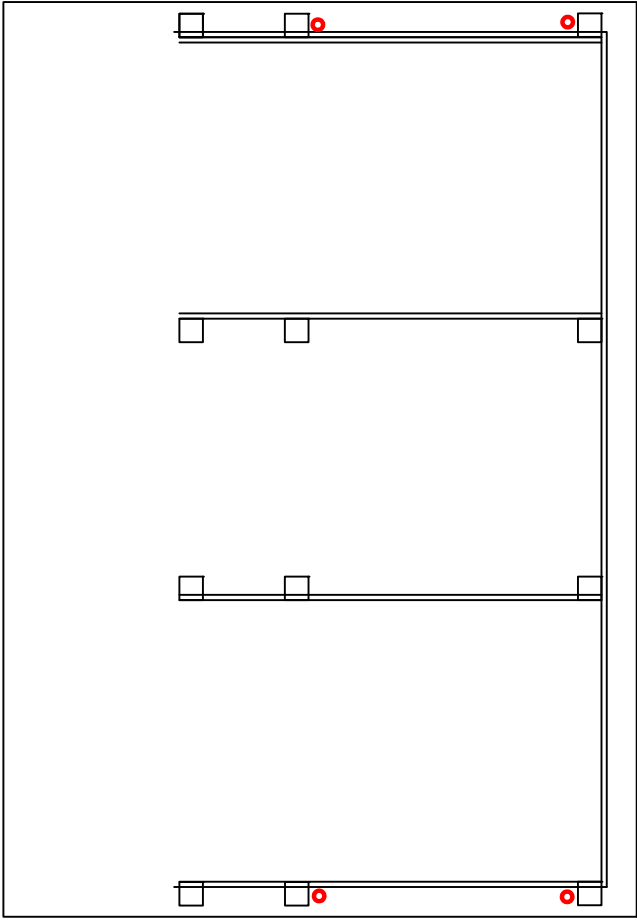
Rafters @2' OC  
2"x4" PT Yellow pine

Rafters @3' OC  
2"x8" PT Yellow pine

2"x8" rafter plate  
2 each

New concrete transition from existing  
asphalt to concrete slab (existing)

# KW MP Composting shed



Material Take-off and estimate for KW Mounted Police Compost Sheds

DESC	MEAS	QUAN	UNIT\$	EXT\$
5/8" CDX PT 4X8 PLY	EA	12	31	\$372.00
6X6 PT POST 12'	EA	12	32	\$384.00
2x8x12' PT	EA	40	12	\$480.00
2x8x16' PT	EA	8	15	\$120.00
2x6x12' PT	EA	21	15	\$315.00
5V-Crimp Galvalume	SF	336	0.9	\$302.40
2" x 2" Galvalume Drip Edge	LF	90	0.3	\$27.00
6" x 6" Galvalume Ridge Cap	LF	28	0.75	\$21.00
Grace Ice & Water Shield (225sf roll)	EA	2	150	\$300.00
1/2" x 10" HDG Hex Bolt + Nut + 2 Washers	EA	16	6	\$96.00
1/2" x 7" HDG Hex Bolt + Nut +2 Washers	EA	16	5	\$80.00
1/2" x 4" HDG Hex Bolt + Nut +2 Washers	EA	26	4	\$104.00
Red Head Anchors 1/2" x 4 in	EA	12	2	\$24.00
6"X6' POST CUP	EA	12	2	\$24.00
1/2" Concrete Drill bits	EA	2	8	\$16.00
Concrete for taper ramp (.5 cuft sacks)	EA	9	5	\$45.00
1 Sheet T1011 PT siding	EA	1	30	\$30.00
Nails/Screws				\$200.00
Hurrigan anchor system	EA	4	50	\$200.00
			Total	\$3,140.40