

100' 0 100'  
 SCALE 1"=100'  
 BAR IS TWO INCHES ON ORIGINAL DRAWINGS IF  
 NOT TWO INCHES ON THIS SHEET ADJUST  
 SCALES ACCORDINGLY



**BERMELLO AJAMIL  
 & PARTNERS • INC**

Architecture • Engineering • Planning  
 Interior Design • Landscape Architecture  
 2601 South Bayshore Drive  
 Suite 1000  
 Miami, Florida 33133  
 (305) 859-2050  
 Fax (305) 860-3700

PREPARED FOR/OWNER:  
**CITY OF KEY WEST, FL**  
 P. O. BOX 1409  
 3140 FLAGLER AVENUE  
 KEY WEST, FL 33041



PROJECT NAME:

**TRUMAN  
 WATERFRONT  
 PARK**

PROJECT LOCATION/ADDRESS:

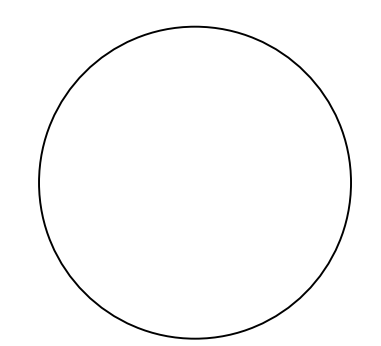
**TRUMAN WATERFRONT PARK  
 WEST OF FORT STREET AND THE  
 TRUMAN ANNEX DEVELOPMENT,  
 NORTH OF KEY WEST NAVAL BASE**

SUB-CONSULTANT INFORMATION:

**PEREZ ENGINEERING &  
 DEVELOPMENT, INC.**  
 Certificate of Authorization No. 8579

1010 Kennedy Drive  
 Suite 201  
 Key West, Florida 33040  
 (305) 293-9440  
 Fax (305) 296-0243

PROFESSIONAL SEAL:



**ALLEN E. PEREZ, P.E.**  
 FLORIDA REGISTERED ENGINEER  
 51468

SUBMITTAL DESCRIPTION / MILESTONE:

**DEVELOPMENT  
 APPLICATION  
 March 3, 2013**

REVISIONS:

- 1 02/22/2013
- 2 02/25/2014

DRAWING SHEET INFORMATION

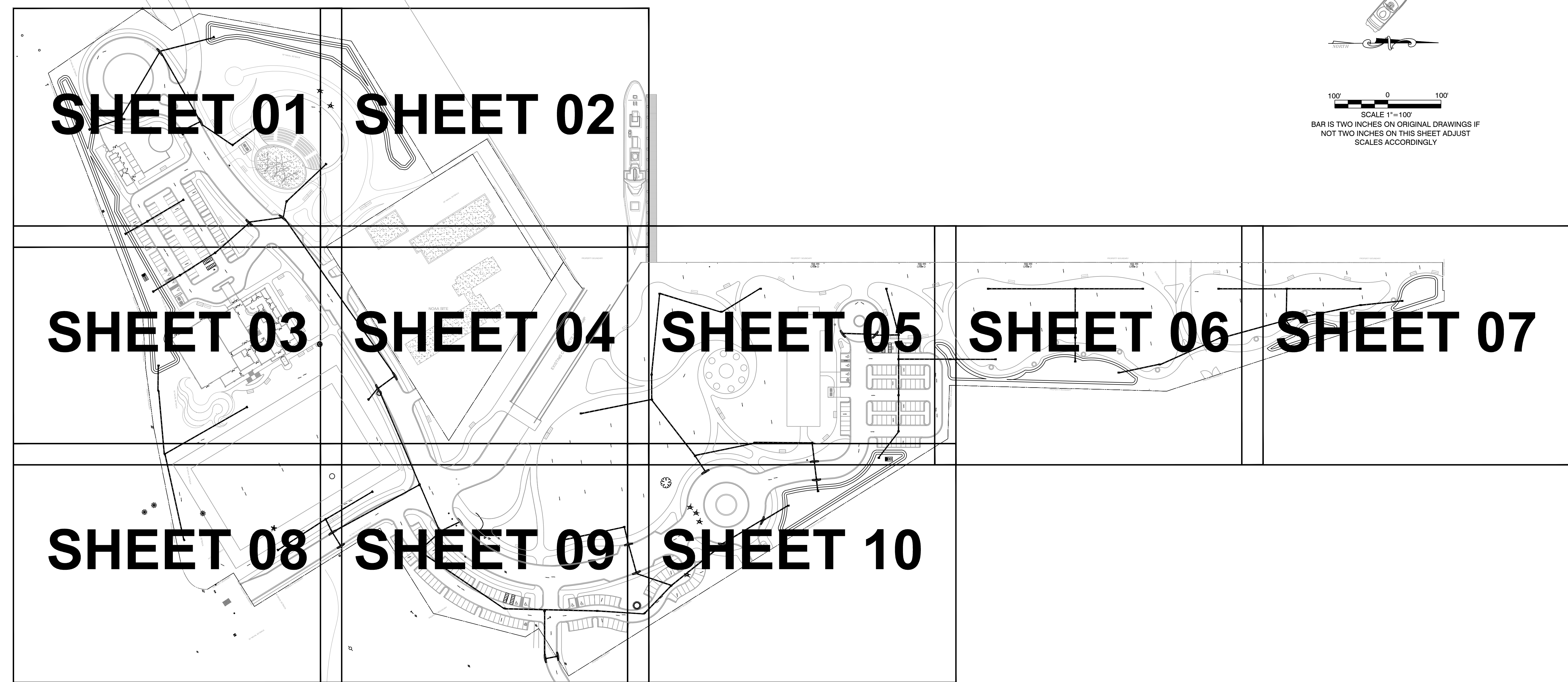
BA PROJECT NO.: 12010  
 SCALE: 1" = 100'  
 DATE: January 14, 2013  
 DRAWN BY: RTM  
 CHECKED BY: AEP  
 CADD FILE: X Truman Waterfront Base.dwg

DRAWING TITLE:

**CONCEPTUAL  
 DRAINAGE  
 PLAN**

SHEET NO.

**CC-00**



Drainage Calculations			
<i>Water Quantity - Predevelopment</i>			
Total Project Area	28.21	ac	1,228,828
Upland Project Area	28.21	ac	1,228,828
PerVIOUS Area	17.04	ac	742,262
Impervious Area	11.69	ac	509,216
% Impervious	0.41		
Rainfall for 25yr/24hr event (P)	9.00	in	
Rainfall for 25yr/3day event (P)	12.23	in	
Depth to Water Table	4.00	ft	
Predeveloped Available Storage	8.18	in	
Soil Storage (S)	4.79	in	
Qpre = (P - 0.2S) <sup>2</sup> (P + 0.8S)	7.91	in	
<i>Water Quantity - Postdevelopment</i>			
Project Area	28.21	ac	1,228,828
PerVIOUS Area	18.30	ac	797,148
Impervious Area	9.91	ac	431,680
% Impervious	35.13%		
Rainfall for 25yr/24hr event (P)	9	in	
Rainfall for 25yr/3day event (P)	12.23	in	
Depth to Water Table	4.00	ft	
Developed Available Storage	8.18	in	
Soil Storage (S)	5.31	in	
Qpost = (P - 0.2S) <sup>2</sup> (P + 0.8S)	7.57	in	
Runoff Volume from 25 year/ 3 day storm	213.62	ac-in	
<i>Postdevelopment - Predevelopment</i>			
Qpost - Qpre	-0.34	in	
Volume = QA	-9.56	ac-in	

Water Quality			
Project Area	28.21	ac	1,228,828
Surface Water	0.00	ac	0
Roof Area	0.94	ac	40,946
Pavement/Walkways	9.48	ac	412,949
PerVIOUS area	18.30	ac	797,148
Site area for Water Quality (Total area - (water surface + roof area))	27.27	ac	1,187,881
Impervious area for water Quality (Site area for Water Quality - PerVIOUS area)	8.97	ac	390,733
% Impervious	33%		
A) One and a half inches of runoff from project area	42.32	ac-in	
B) 3.75 inches times percent impervious (3.75 x percent impervious x (site area - surface water))	34.80	ac-in	
<i>Comparison of Water Quality Methods</i>			
	42.32	>	34.80
50 % reduction due to retention	21.16	ac-in	78,802
Pond A			29,137
Pond B			20,522
Pond C			10,317
Pond D			2,206
Pond E			3,107
Pond F			
<b>Total Volume Provided</b>			<b>81,964</b>



BERMELLO AJAMIL & PARTNERS • INC

Architecture • Engineering • Planning  
Interior Design • Landscape Architecture  
2601 South Bayshore Drive  
Suite 1000  
Miami, Florida 33133  
(305) 859-2050  
Fax (305) 860-3700

PREPARED FOR/OWNER:  
CITY OF KEY WEST, FL  
P. O. BOX 1409  
3140 FLAGLER AVENUE  
KEY WEST, FL 33041



PROJECT NAME:

**TRUMAN  
WATERFRONT  
PARK**

PROJECT LOCATION/ADDRESS:

TRUMAN WATERFRONT PARK  
WEST OF FORT STREET AND THE  
TRUMAN ANNEX DEVELOPMENT,  
NORTH OF KEY WEST NAVAL BASE

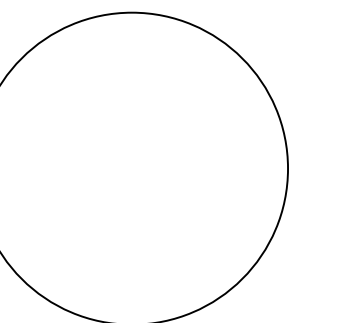
SUB-CONSULTANT INFORMATION:

**PEREZ ENGINEERING &  
DEVELOPMENT, INC.**

Certificate of Authorization No. 8579

1010 Kennedy Drive  
Suite 201  
Key West, Florida 33040  
(305) 293-9440  
Fax (305) 296-0243

PROFESSIONAL SEAL:



ALLEN E. PEREZ, P.E.  
FLORIDA REGISTERED ENGINEER  
51468

SUBMITTAL DESCRIPTION / MILESTONE:

**DEVELOPMENT  
APPLICATION  
March 3, 2013**

REVISIONS:

- 1 02/22/2013
- 2 02/25/2014

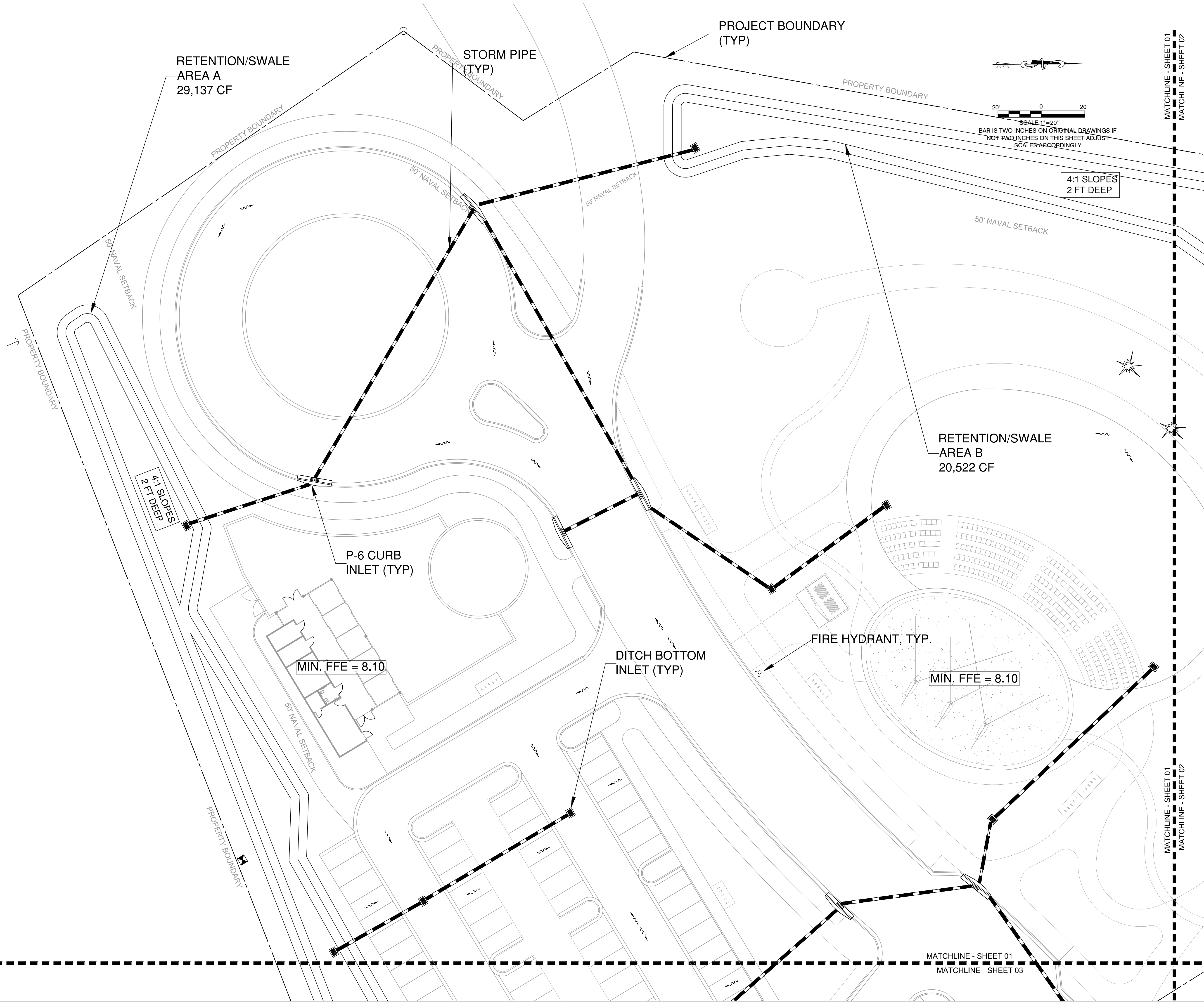
DRAWING SHEET INFORMATION

BA PROJECT NO.: 12010  
SCALE: 1" = 20'  
DATE: January 14, 2013  
DRAWN BY: RTM  
CHECKED BY: AEP  
CADD FILE: X Truman Waterfront Base.dwg

DRAWING TITLE:  
**CONCEPTUAL  
DRAINAGE  
PLAN**

SHEET NO.

**CC-01**

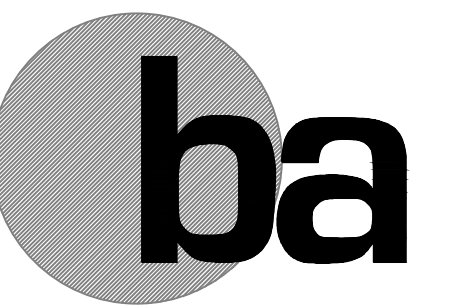


MATCHLINE - SHEET 01  
MATCHLINE - SHEET 03

MATCHLINE - SHEET 01  
MATCHLINE - SHEET 03

MATCHLINE - SHEET 01  
MATCHLINE - SHEET 02

MATCHLINE - SHEET 01  
MATCHLINE - SHEET 02



BERMELLO AJAMIL & PARTNERS • INC

Architecture • Engineering • Planning  
Interior Design • Landscape Architecture  
2601 South Bayshore Drive  
Suite 1000  
Miami, Florida 33133  
(305) 859-2050  
Fax (305) 860-3700

PREPARED FOR/OWNER:  
CITY OF KEY WEST, FL  
P. O. BOX 1409  
3140 FLAGLER AVENUE  
KEY WEST, FL 33041



PROJECT NAME:

**TRUMAN  
WATERFRONT  
PARK**

PROJECT LOCATION/ADDRESS:

TRUMAN WATERFRONT PARK  
WEST OF FORT STREET AND THE  
TRUMAN ANNEX DEVELOPMENT,  
NORTH OF KEY WEST NAVAL BASE

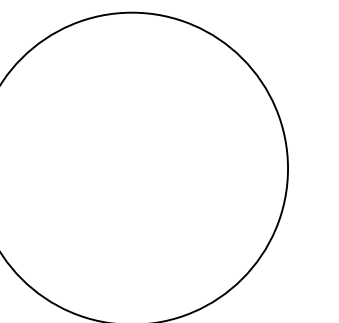
SUB-CONSULTANT INFORMATION:

**PEREZ ENGINEERING &  
DEVELOPMENT, INC.**

Certificate of Authorization No. 8579

1010 Kennedy Drive  
Suite 201  
Key West, Florida 33040  
(305) 293-9440  
Fax (305) 296-0243

PROFESSIONAL SEAL:



ALLEN E. PEREZ, P.E.  
FLORIDA REGISTERED ENGINEER  
51468

SUBMITTAL DESCRIPTION / MILESTONE:

**DEVELOPMENT  
APPLICATION  
March 3, 2013**

REVISIONS:

- |   |            |
|---|------------|
| 1 | 02/22/2013 |
| 2 | 02/25/2014 |
|   |            |
|   |            |
|   |            |
|   |            |
|   |            |
|   |            |
|   |            |
|   |            |

DRAWING SHEET INFORMATION

BA PROJECT NO.: 12010  
SCALE: 1" = 20'  
DATE: January 14, 2013  
DRAWN BY: RTM  
CHECKED BY: AEP  
CADD FILE: X Truman Waterfront Base.dwg

DRAWING TITLE:

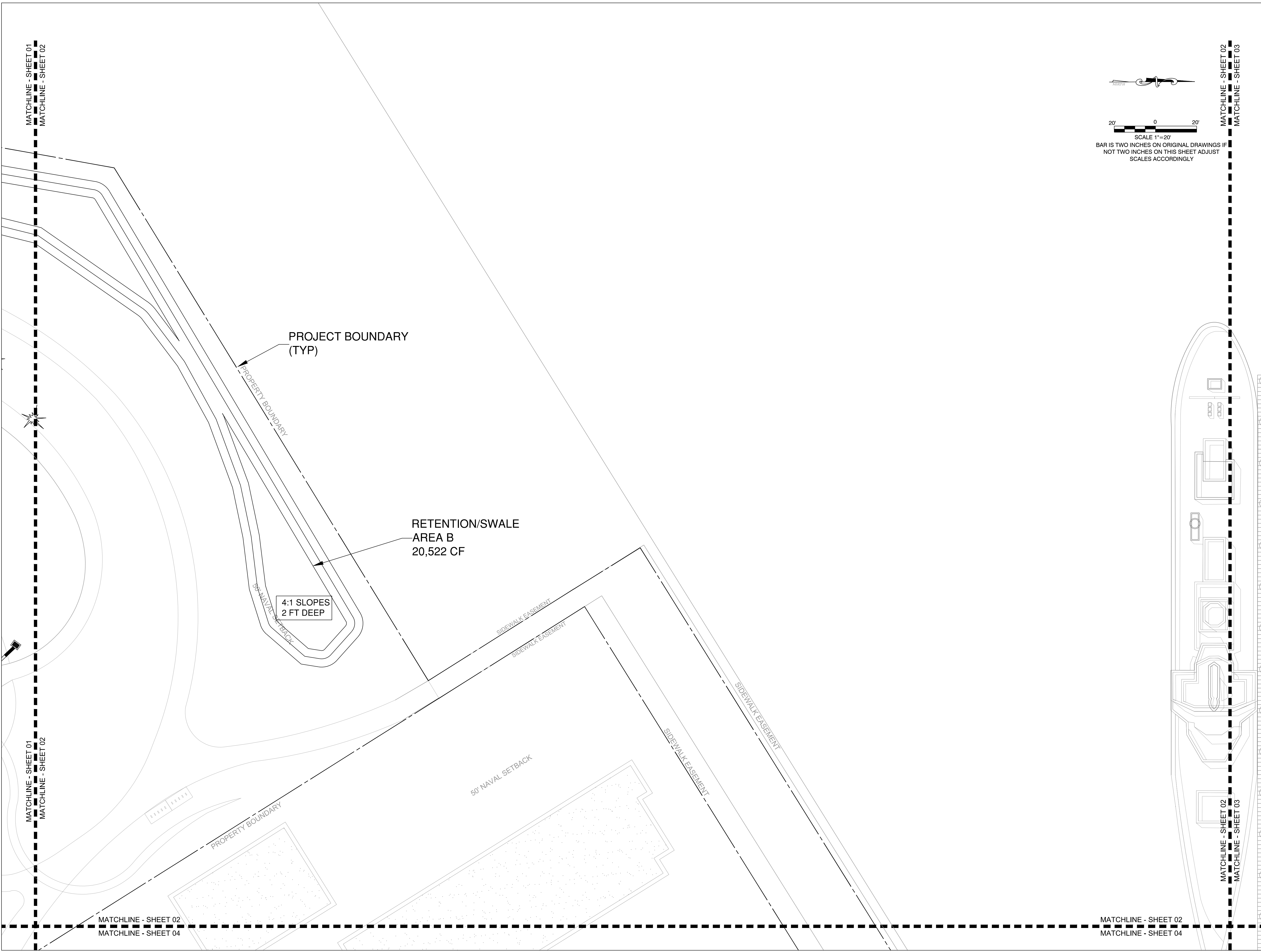
**CONCEPTUAL  
DRAINAGE  
PLAN**

SHEET NO.

**CC-02**



SCALE 1" = 20'  
BAR IS TWO INCHES ON ORIGINAL DRAWINGS IF  
NOT TWO INCHES ON THIS SHEET ADJUST  
SCALES ACCORDINGLY





BERMELLO AJAMIL & PARTNERS • INC

Architecture • Engineering • Planning  
Interior Design • Landscape Architecture  
2601 South Bayshore Drive  
Suite 1000  
Miami, Florida 33133  
(305) 859-2050  
Fax (305) 860-3700

PREPARED FOR/OWNER:  
CITY OF KEY WEST, FL  
P. O. BOX 1409  
3140 FLAGLER AVENUE  
KEY WEST, FL 33041



PROJECT NAME:

**TRUMAN WATERFRONT PARK**

PROJECT LOCATION/ADDRESS:

TRUMAN WATERFRONT PARK  
WEST OF FORT STREET AND THE  
TRUMAN ANNEX DEVELOPMENT,  
NORTH OF KEY WEST NAVAL BASE

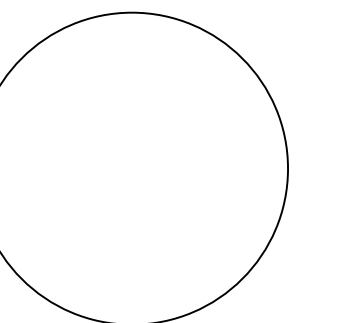
SUB-CONSULTANT INFORMATION:

**PEREZ ENGINEERING & DEVELOPMENT, INC.**

Certificate of Authorization No. 8579

1010 Kennedy Drive  
Suite 201  
Key West, Florida 33040  
(305) 293-9440  
Fax (305) 296-0243

PROFESSIONAL SEAL:



ALLEN E. PEREZ, P.E.  
FLORIDA REGISTERED ENGINEER  
51468

SUBMITTAL DESCRIPTION / MILESTONE:

**DEVELOPMENT APPLICATION**  
March 3, 2013

REVISIONS:

1 02/22/2013  
2 02/25/2014

DRAWING SHEET INFORMATION

BA PROJECT NO.: 12010  
SCALE: 1" = 20'  
DATE: January 14, 2013  
DRAWN BY: RTM  
CHECKED BY: AEP  
CADD FILE: X Truman Waterfront Base.dwg

DRAWING TITLE:

**CONCEPTUAL DRAINAGE PLAN**

SHEET NO.

**CC-03**

MATCHLINE - SHEET 01  
MATCHLINE - SHEET 03

MATCHLINE - SHEET 01  
MATCHLINE - SHEET 03

MATCHLINE - SHEET 03  
MATCHLINE - SHEET 04

MATCHLINE - SHEET 03  
MATCHLINE - SHEET 04

MATCHLINE - SHEET 03  
MATCHLINE - SHEET 08

MATCHLINE - SHEET 03  
MATCHLINE - SHEET 08



SCALE 1"=20'  
BAR IS TWO INCHES ON ORIGINAL DRAWINGS IF  
NOT TWO INCHES ON THIS SHEET ADJUST  
SCALES ACCORDINGLY

PROJECT BOUNDARY  
(TYP)

TRIPLE CHAMBER  
BAFFLE BOX  
WITH WELL

RETENTION/SWALE  
AREA A  
29,137 CF

FIRE HYDRANT, TYP.

STORM PIPE  
(TYP)

MIN. FFE = 7.10

4:1 SLOPES  
2 FT DEEP

DITCH BOTTOM  
INLET (TYP)

PROPERTY BOUNDARY

PROPERTY BOUNDARY

PROPERTY BOUNDARY

50' NAVAL SETBACK

50' NAVAL SETBACK



BERMELLO AJAMIL & PARTNERS • INC

Architecture • Engineering • Planning  
Interior Design • Landscape Architecture  
2601 South Bayshore Drive  
Suite 1000  
Miami, Florida 33133  
(305) 859-2050  
Fax (305) 860-3700

PREPARED FOR/OWNER:  
CITY OF KEY WEST, FL  
P. O. BOX 1409  
3140 FLAGLER AVENUE  
KEY WEST, FL 33041



PROJECT NAME:

**TRUMAN WATERFRONT PARK**

PROJECT LOCATION/ADDRESS:  
TRUMAN WATERFRONT PARK  
WEST OF FORT STREET AND THE  
TRUMAN ANNEX DEVELOPMENT,  
NORTH OF KEY WEST NAVAL BASE

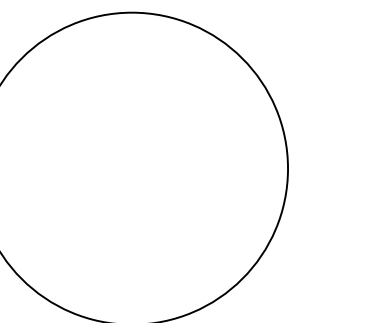
SUB-CONSULTANT INFORMATION:

**PEREZ ENGINEERING & DEVELOPMENT, INC.**

Certificate of Authorization No. 8579

1010 Kennedy Drive  
Suite 201  
Key West, Florida 33040  
(305) 293-9440  
Fax (305) 296-0243

PROFESSIONAL SEAL:



ALLEN E. PEREZ, P.E.  
FLORIDA REGISTERED ENGINEER  
51468

SUBMITTAL DESCRIPTION / MILESTONE:

**DEVELOPMENT APPLICATION**  
March 3, 2013

REVISIONS:

- 1 02/22/2013
- 2 02/25/2014

DRAWING SHEET INFORMATION

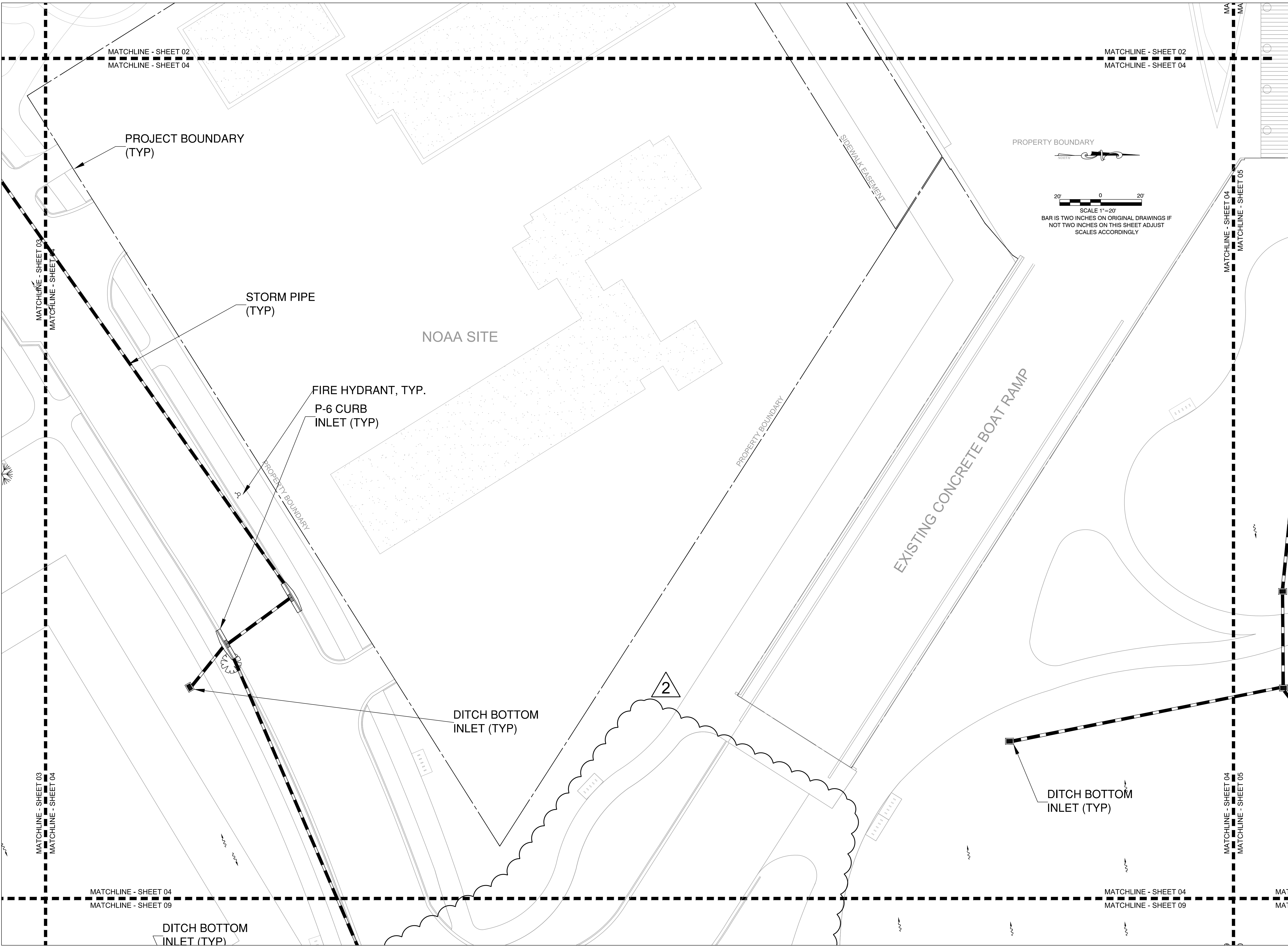
BA PROJECT NO.: 12010  
SCALE: 1" = 20'  
DATE: January 14, 2013  
DRAWN BY: RTM  
CHECKED BY: AEP  
CADD FILE: X Truman Waterfront Base.dwg

DRAWING TITLE:

**CONCEPTUAL DRAINAGE PLAN**

SHEET NO.

**CC-04**





BERMELLO AJAMIL & PARTNERS • INC

Architecture • Engineering • Planning  
Interior Design • Landscape Architecture  
2601 South Bayshore Drive  
Suite 1000  
Miami, Florida 33133  
(305) 859-2050  
Fax (305) 860-3700

PREPARED FOR/OWNER:  
CITY OF KEY WEST, FL  
P. O. BOX 1409  
3140 FLAGLER AVENUE  
KEY WEST, FL 33041



PROJECT NAME:

**TRUMAN WATERFRONT PARK**

PROJECT LOCATION/ADDRESS:

TRUMAN WATERFRONT PARK  
WEST OF FORT STREET AND THE  
TRUMAN ANNEX DEVELOPMENT,  
NORTH OF KEY WEST NAVAL BASE

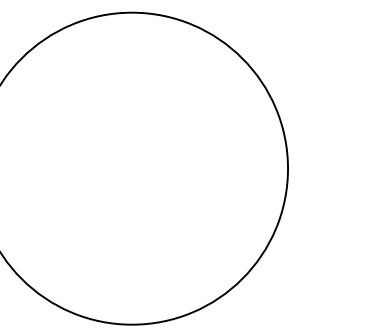
SUB-CONSULTANT INFORMATION:

**PEREZ ENGINEERING & DEVELOPMENT, INC.**

Certificate of Authorization No. 8579

1010 Kennedy Drive  
Suite 201  
Key West, Florida 33040  
(305) 293-9440  
Fax (305) 296-0243

PROFESSIONAL SEAL:



ALLEN E. PEREZ, P.E.  
FLORIDA REGISTERED ENGINEER  
51468

SUBMITTAL DESCRIPTION / MILESTONE:

**DEVELOPMENT APPLICATION**  
March 3, 2013

REVISIONS:

1 02/22/2013  
2 02/25/2014

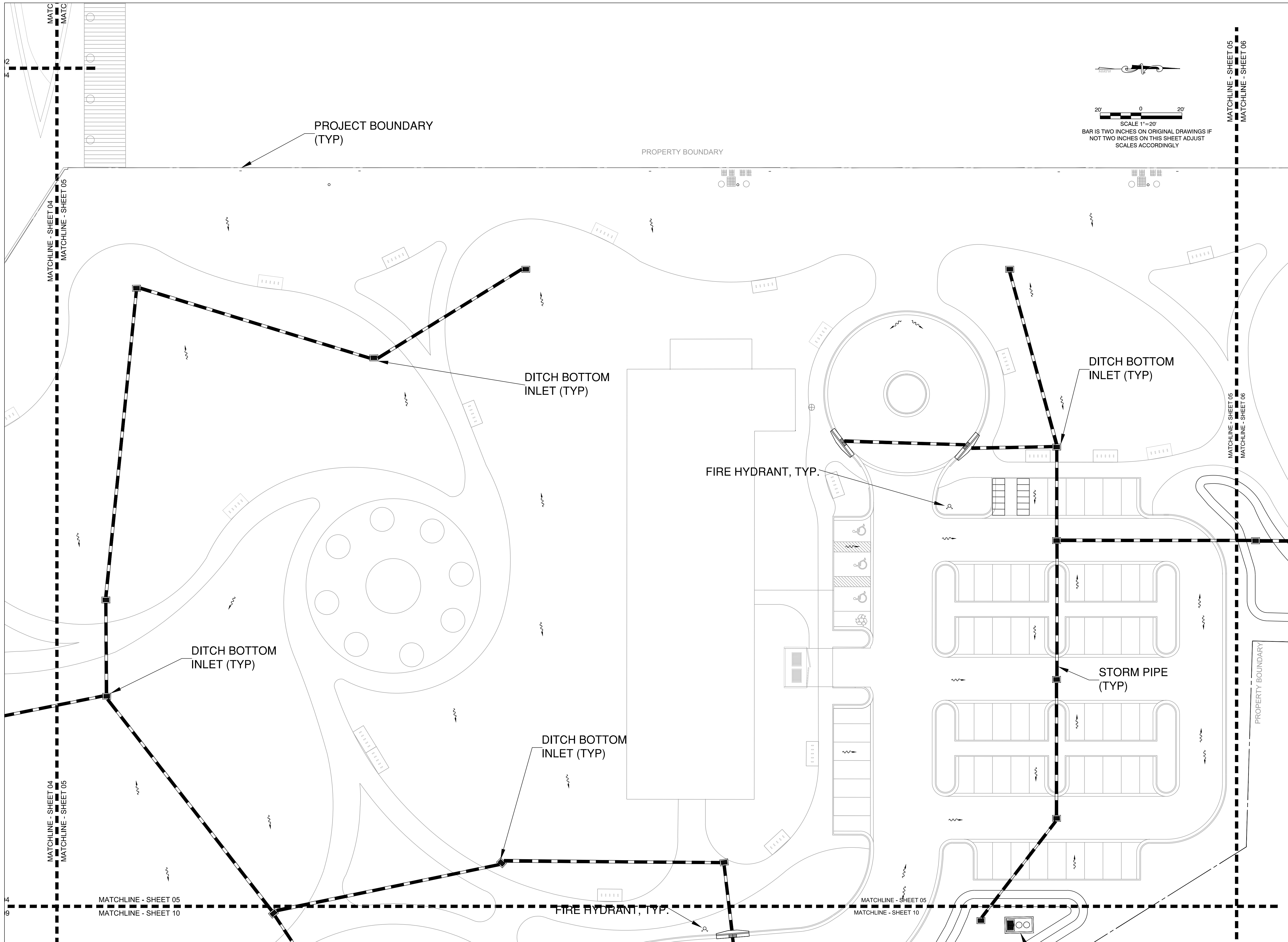
DRAWING SHEET INFORMATION

BA PROJECT NO.: 12010  
SCALE: 1" = 20'  
DATE: January 14, 2013  
DRAWN BY: RTM  
CHECKED BY: AEP  
CADD FILE: X Truman Waterfront Base.dwg

DRAWING TITLE:  
**CONCEPTUAL DRAINAGE PLAN**

SHEET NO.

**CC-05**





BERMELLO AJAMIL & PARTNERS • INC

Architecture • Engineering • Planning  
Interior Design • Landscape Architecture  
2601 South Bayshore Drive  
Suite 1000  
Miami, Florida 33133  
(305) 859-2050  
Fax (305) 860-3700

PREPARED FOR/OWNER:  
CITY OF KEY WEST, FL  
P. O. BOX 1409  
3140 FLAGLER AVENUE  
KEY WEST, FL 33041



PROJECT NAME:

**TRUMAN WATERFRONT PARK**

PROJECT LOCATION/ADDRESS:

TRUMAN WATERFRONT PARK  
WEST OF FORT STREET AND THE  
TRUMAN ANNEX DEVELOPMENT,  
NORTH OF KEY WEST NAVAL BASE

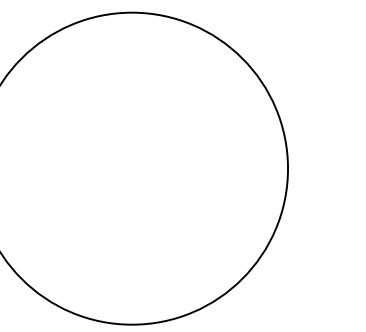
SUB-CONSULTANT INFORMATION:

**PEREZ ENGINEERING & DEVELOPMENT, INC.**

Certificate of Authorization No. 8579

1010 Kennedy Drive  
Suite 201  
Key West, Florida 33040  
(305) 293-9440  
Fax (305) 296-0243

PROFESSIONAL SEAL:



ALLEN E. PEREZ, P.E.  
FLORIDA REGISTERED ENGINEER  
51468

SUBMITTAL DESCRIPTION / MILESTONE:

**DEVELOPMENT APPLICATION**  
March 3, 2013

REVISIONS:

- 1 02/22/2013
- 2 02/25/2014

DRAWING SHEET INFORMATION

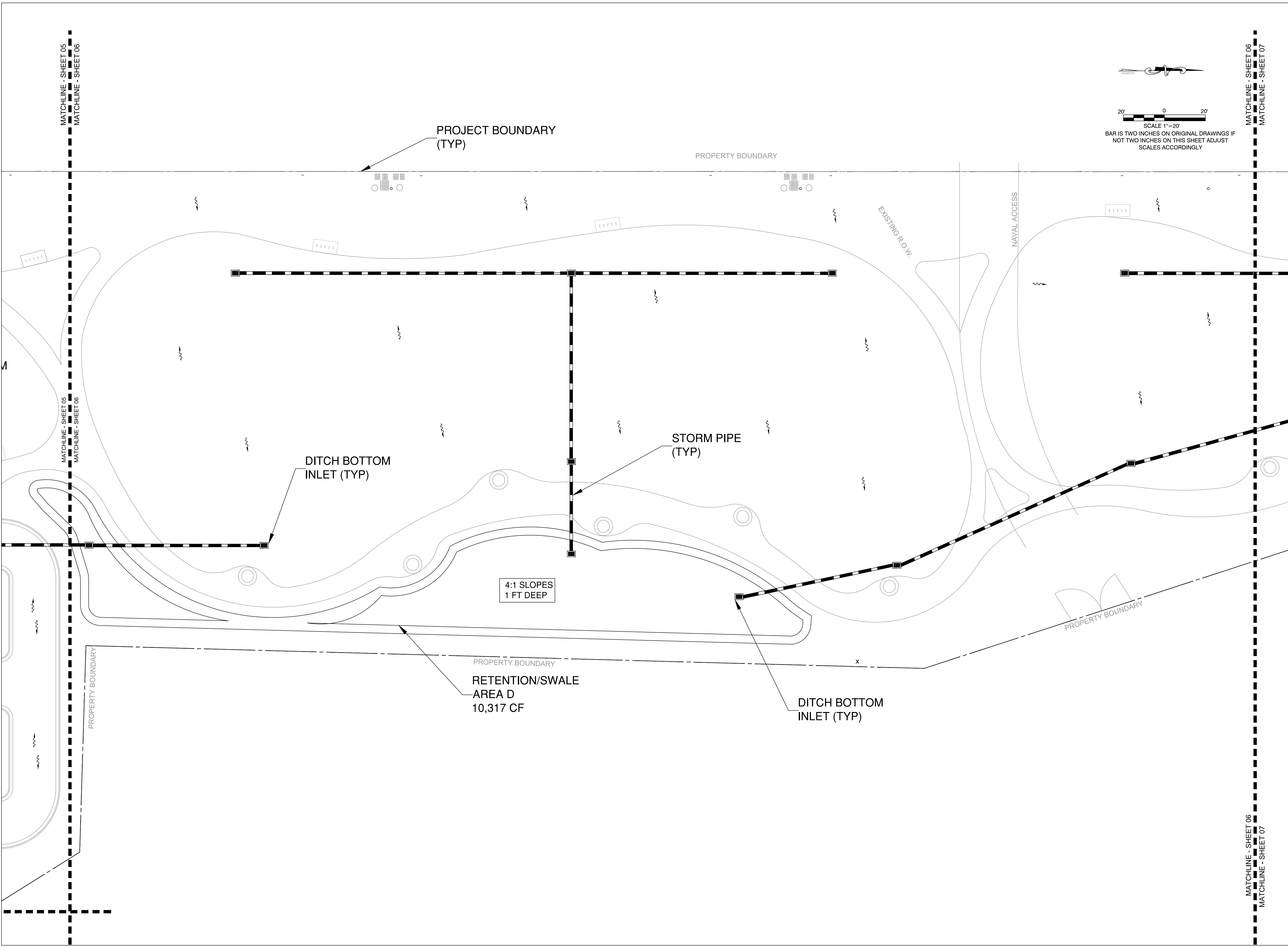
BA PROJECT NO.: 12010  
SCALE: 1" = 20'  
DATE: January 14, 2013  
DRAWN BY: RTM  
CHECKED BY: AEP  
CADD FILE: X Truman Waterfront Base.dwg

DRAWING TITLE:

**CONCEPTUAL DRAINAGE PLAN**

SHEET NO.

**CC-06**



MATCHLINE - SHEET 05  
MATCHLINE - SHEET 06

MATCHLINE - SHEET 06  
MATCHLINE - SHEET 07

MATCHLINE - SHEET 05  
MATCHLINE - SHEET 06

MATCHLINE - SHEET 06  
MATCHLINE - SHEET 07

MATCHLINE - SHEET 06  
MATCHLINE - SHEET 07

MATCHLINE - SHEET 06  
MATCHLINE - SHEET 07

PROJECT BOUNDARY  
(TYP)

PROPERTY BOUNDARY

PROPERTY BOUNDARY

PROPERTY BOUNDARY

STORM PIPE  
(TYP)

DITCH BOTTOM  
INLET (TYP)

4:1 SLOPES  
1 FT DEEP

4:1 SLOPES  
1 FT DEEP

RETENTION/SWALE  
AREA F  
3,107 CF

RETENTION/SWALE  
AREA E  
2,206 CF



20' 0 20'  
SCALE 1" = 20'

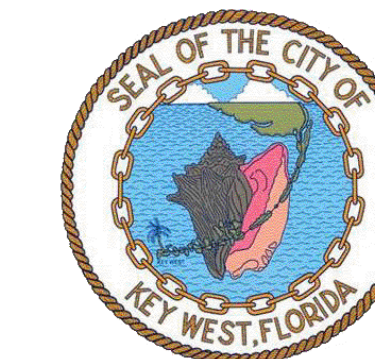
BAR IS TWO INCHES ON ORIGINAL DRAWINGS IF  
NOT TWO INCHES ON THIS SHEET ADJUST  
SCALES ACCORDINGLY



BERMELLO AJAMIL  
& PARTNERS • INC

Architecture • Engineering • Planning  
Interior Design • Landscape Architecture  
2601 South Bayshore Drive  
Suite 1000  
Miami, Florida 33133  
(305) 859-2050  
Fax (305) 860-3700

PREPARED FOR/OWNER:  
CITY OF KEY WEST, FL  
P. O. BOX 1409  
3140 FLAGLER AVENUE  
KEY WEST, FL 33041



PROJECT NAME:

**TRUMAN  
WATERFRONT  
PARK**

PROJECT LOCATION/ADDRESS:

TRUMAN WATERFRONT PARK  
WEST OF FORT STREET AND THE  
TRUMAN ANNEX DEVELOPMENT,  
NORTH OF KEY WEST NAVAL BASE

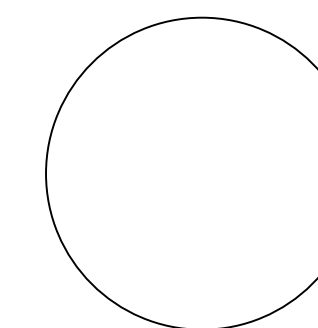
SUB-CONSULTANT INFORMATION:

**PEREZ ENGINEERING &  
DEVELOPMENT, INC.**

Certificate of Authorization No. 8579

1010 Kennedy Drive  
Suite 201  
Key West, Florida 33040  
(305) 293-9440  
Fax (305) 296-0243

PROFESSIONAL SEAL:



ALLEN E. PEREZ, P.E.  
FLORIDA REGISTERED ENGINEER  
51468

SUBMITTAL DESCRIPTION / MILESTONE:

**DEVELOPMENT  
APPLICATION  
March 3, 2013**

REVISIONS:

1 02/22/2013  
2 02/25/2014

DRAWING SHEET INFORMATION

BA PROJECT NO.: 12010  
SCALE: 1" = 20'  
DATE: January 14, 2013  
DRAWN BY: RTM  
CHECKED BY: AEP  
CADD FILE: X Truman Waterfront Base.dwg

DRAWING TITLE:

**CONCEPTUAL  
DRAINAGE  
PLAN**

SHEET NO.

**CC-07**



MATCHLINE - SHEET 03  
MATCHLINE - SHEET 08

MATCHLINE - SHEET 03  
MATCHLINE - SHEET 08



**BERMELLO AJAMIL  
& PARTNERS • INC**

Architecture • Engineering • Planning  
Interior Design • Landscape Architecture  
2601 South Bayshore Drive  
Suite 1000  
Miami, Florida 33133  
(305) 859-2050  
Fax (305) 860-3700

PREPARED FOR/OWNER:  
CITY OF KEY WEST, FL  
P. O. BOX 1409  
3140 FLAGLER AVENUE  
KEY WEST, FL 33041



PROJECT NAME:

**TRUMAN  
WATERFRONT  
PARK**

PROJECT LOCATION/ADDRESS:

TRUMAN WATERFRONT PARK  
WEST OF FORT STREET AND THE  
TRUMAN ANNEX DEVELOPMENT,  
NORTH OF KEY WEST NAVAL BASE

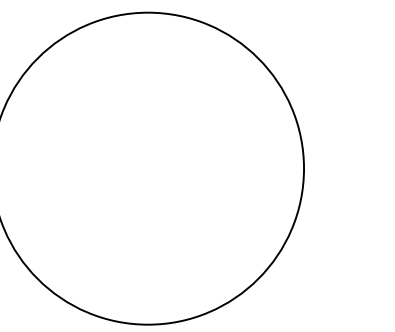
SUB-CONSULTANT INFORMATION:

**PEREZ ENGINEERING &  
DEVELOPMENT, INC.**

Certificate of Authorization No. 8579

1010 Kennedy Drive  
Suite 201  
Key West, Florida 33040  
(305) 293-9440  
Fax (305) 296-0243

PROFESSIONAL SEAL:



ALLEN E. PEREZ, P.E.  
FLORIDA REGISTERED ENGINEER  
51468

SUBMITTAL DESCRIPTION / MILESTONE:

**DEVELOPMENT  
APPLICATION  
March 3, 2013**

REVISIONS:

1 02/22/2013  
2 02/25/2014

DRAWING SHEET INFORMATION

BA PROJECT NO.: 12010  
SCALE: 1" = 20'  
DATE: January 14, 2013  
DRAWN BY: RTM  
CHECKED BY: AEP  
CADD FILE: X Truman Waterfront Base.dwg

DRAWING TITLE:  
**CONCEPTUAL  
DRAINAGE  
PLAN**

SHEET NO.

**CC-08**

STORM PIPE  
(TYP)

DITCH BOTTOM  
INLET (TYP)

DITCH BOTTOM  
INLET (TYP)

PROJECT BOUNDARY  
(TYP)

PROPERTY BOUNDARY

50' NAVAL SETBACK

50' NAVAL SETBACK

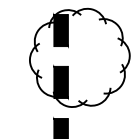
PROPERTY BOUNDARY

PROPERTY BOUNDARY

PROPERTY BOUNDARY

50' NAVAL SETBACK

50' NAVAL SETBACK



SCALE 1"=20'

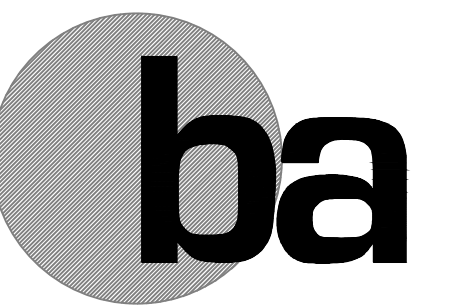
BAR IS TWO INCHES ON ORIGINAL DRAWINGS IF  
NOT TWO INCHES ON THIS SHEET ADJUST  
SCALES ACCORDINGLY

MATCHLINE - SHEET 08

MATCHLINE - SHEET 10

MATCHLINE - SHEET 09

MATCHLINE - SHEET 08



**BERMELLO AJAMIL  
& PARTNERS • INC**

Architecture • Engineering • Planning  
Interior Design • Landscape Architecture  
2601 South Bayshore Drive  
Suite 1000  
Miami, Florida 33133  
(305) 859-2050  
Fax (305) 860-3700

PREPARED FOR/OWNER:  
CITY OF KEY WEST, FL  
P. O. BOX 1409  
3140 FLAGLER AVENUE  
KEY WEST, FL 33041



PROJECT NAME:

**TRUMAN  
WATERFRONT  
PARK**

PROJECT LOCATION/ADDRESS:  
TRUMAN WATERFRONT PARK  
WEST OF FORT STREET AND THE  
TRUMAN ANNEX DEVELOPMENT,  
NORTH OF KEY WEST NAVAL BASE

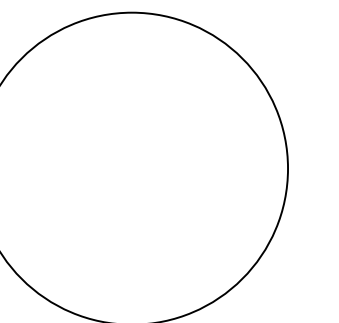
SUB-CONSULTANT INFORMATION:

**PEREZ ENGINEERING &  
DEVELOPMENT, INC.**

Certificate of Authorization No. 8579

1010 Kennedy Drive  
Suite 201  
Key West, Florida 33040  
(305) 293-9440  
Fax (305) 296-0243

PROFESSIONAL SEAL:



ALLEN E. PEREZ, P.E.  
FLORIDA REGISTERED ENGINEER  
51468

SUBMITTAL DESCRIPTION / MILESTONE:

**DEVELOPMENT  
APPLICATION  
March 3, 2013**

REVISIONS:

- 1 02/22/2013
- 2 02/25/2014

DRAWING SHEET INFORMATION

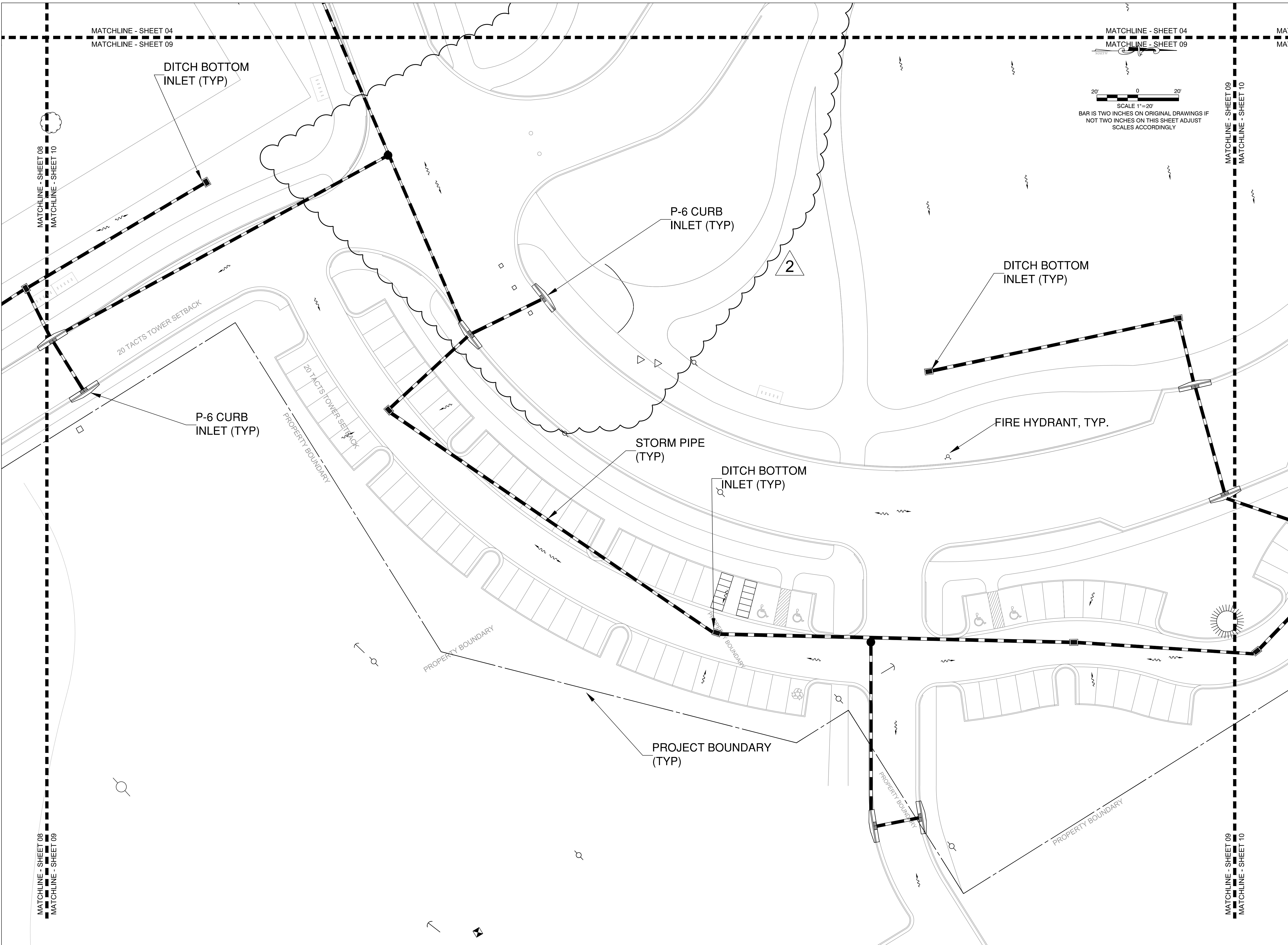
BA PROJECT NO.: 12010  
SCALE: 1" = 20'  
DATE: January 14, 2013  
DRAWN BY: RTM  
CHECKED BY: AEP  
CADD FILE: X Truman Waterfront Base.dwg

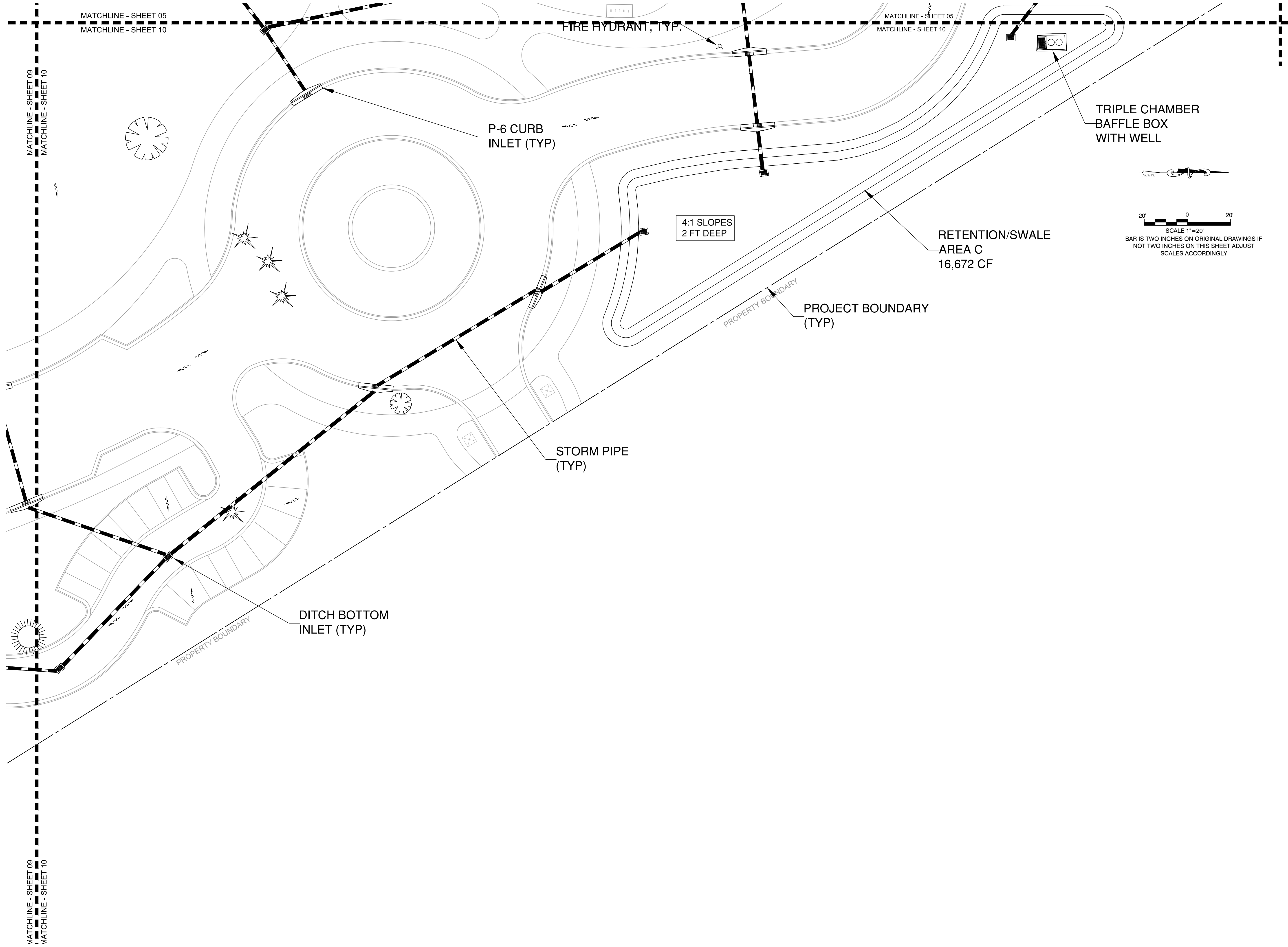
DRAWING TITLE:

**CONCEPTUAL  
DRAINAGE  
PLAN**

SHEET NO.

**CC-09**





**BERMELLO AJAMIL & PARTNERS • INC**

Architecture • Engineering • Planning  
Interior Design • Landscape Architecture  
2601 South Bayshore Drive  
Suite 1000  
Miami, Florida 33133  
(305) 859-2050  
Fax (305) 860-3700

PREPARED FOR/OWNER:  
CITY OF KEY WEST, FL  
P. O. BOX 1409  
3140 FLAGLER AVENUE  
KEY WEST, FL 33041



PROJECT NAME:

**TRUMAN WATERFRONT PARK**

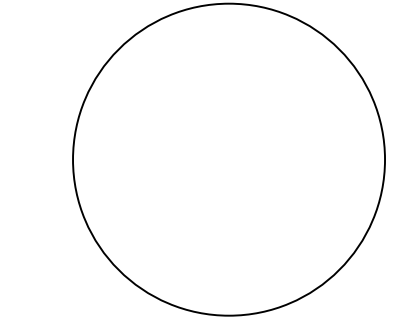
PROJECT LOCATION/ADDRESS:  
TRUMAN WATERFRONT PARK  
WEST OF FORT STREET AND THE  
TRUMAN ANNEX DEVELOPMENT,  
NORTH OF KEY WEST NAVAL BASE

SUB-CONSULTANT INFORMATION:

**PEREZ ENGINEERING & DEVELOPMENT, INC.**  
Certificate of Authorization No. 8579

1010 Kennedy Drive  
Suite 201  
Key West, Florida 33040  
(305) 293-9440  
Fax (305) 296-0243

PROFESSIONAL SEAL:



ALLEN E. PEREZ, P.E.  
FLORIDA REGISTERED ENGINEER  
51468

SUBMITTAL DESCRIPTION / MILESTONE:

**DEVELOPMENT APPLICATION**  
March 3, 2013

REVISIONS:

1	02/22/2013	
2	02/25/2014	

DRAWING SHEET INFORMATION

BA PROJECT NO.: 12010  
SCALE: 1" = 20'  
DATE: January 14, 2013  
DRAWN BY: RTM  
CHECKED BY: AEP  
CADD FILE: X Truman Waterfront Base.dwg

DRAWING TITLE:  
**CONCEPTUAL DRAINAGE PLAN**  
SHEET NO.

**CC-10**