



---



# CLINTON PARK SQUARE



---



CITY OF KEY WEST

Historic gathering park area  
for its residents, established  
1866 from the Navy.



— — — — —  
Clinton Square Park  
— — — — —

The First Custom House  
The moment at Clinton Square  
Park taken circa 1880



---

# The Geiger House

---

Clinton Square

The Geiger House with large cupola is on the left and Clinton Square with the monument in the center C 1870.



March 1899

# Clinton Square Park



The monument was erected in 1866 from the Navy for the fallen soldiers and it served as a gathering area for the years to come.



Erected 1866  
By the Navy Club of  
Key West.  
To the Memory of  
the Officers,  
Sailors, & Soldiers  
of the Army, Navy &  
Marine Corps  
Of the  
United States,  
Who lost their lives  
in their  
Country's service  
upon this station  
From 1861. to 1865





Clinton Square, February 2020



Clinton Square, February 2020



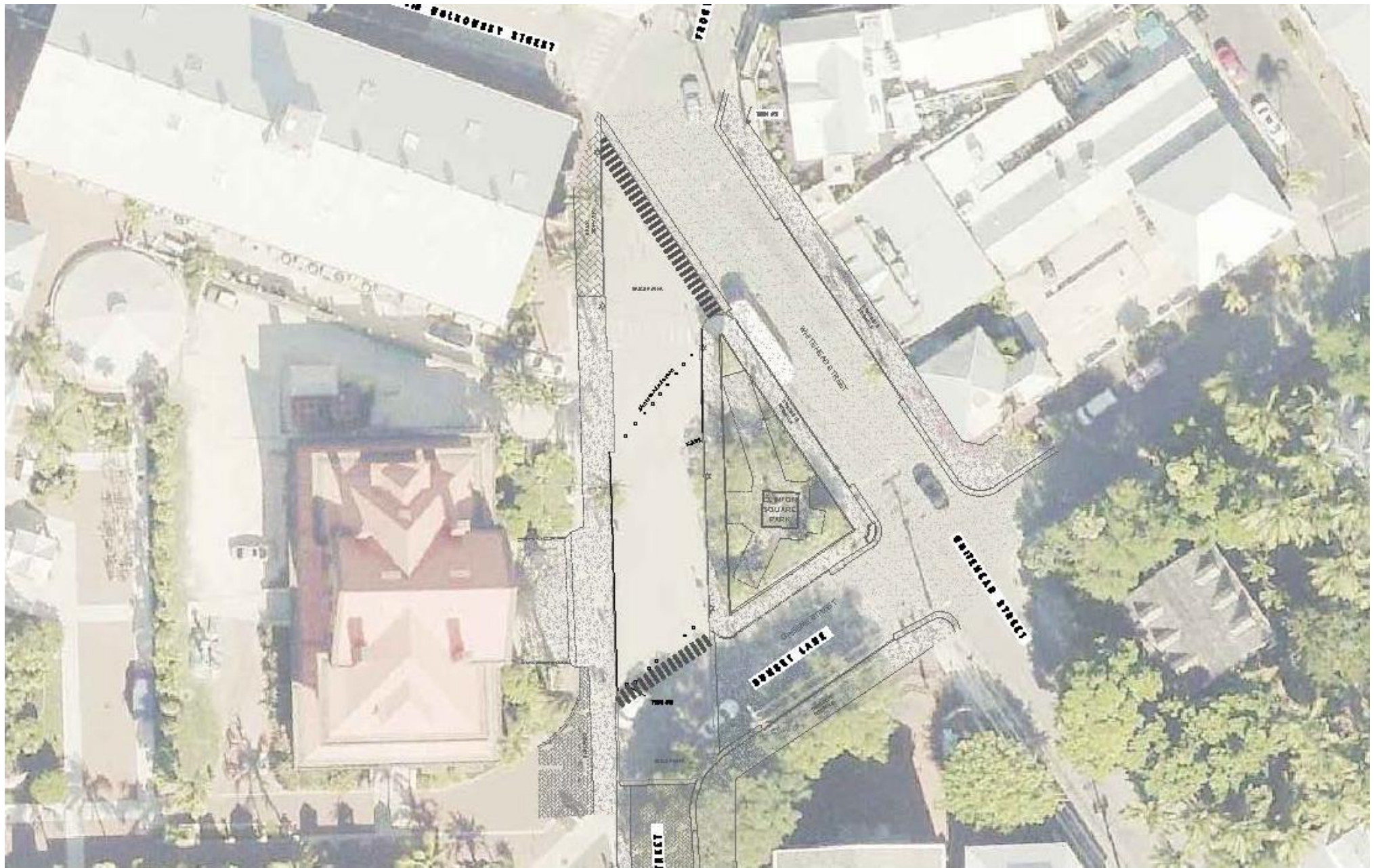
---

# Design Concerns

---

- Neglected Monument and Park Area
  - Illegal parking (uber/ lyft cars)
- Blocking entrance to Custom House and driveway
- Lack of clear pathways, entrance, exits in the park
- Visibility of the monument, park and through to the surroundings museums and stores
  - No seating area
  - More lighting





Existing Floor Plan



# 1.

## VISIBILITY

The visitors clearly be able to see the monument. See beyond the monument to all the historic surrounding buildings



# 2.

## PATHWAYS / WALKTHROUGHS

Create clear visible pathways in the square for people to travel through the square.

3.



### Seating / Gathering Area

Create seating area with the curves for people to seat, read, meet and rest.

4.

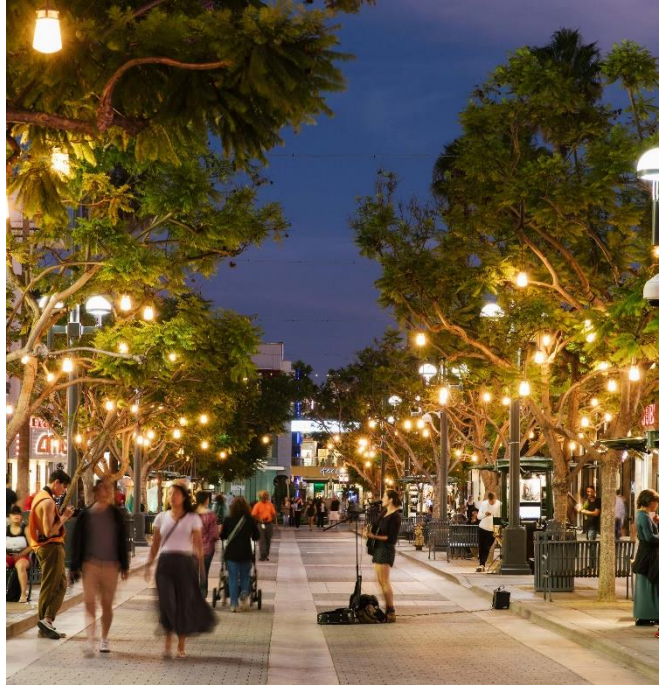


### Shade

Provide an alcove for seating with shade and protection from the sun.



# PROMENADE





# CLINTON PARK SQUARE

## LANDSCAPE & MATERIALS

Pedestrian friendly pathways, Wood bench seating area, lighting, poinciana trees for shade, grass in the landscape areas.





Historic Photo of Whitehead Street



Aerial of Whitehead Street Taken from the top of the lighthouse.

Poinciana Trees planted on both sides of the sidewalk.



Whitehead Street, C 1940S



309 Whitehead Street, C 1965



WHITEHEAD STREET

SUNSET LANE

CONCRETE SIDEWALK

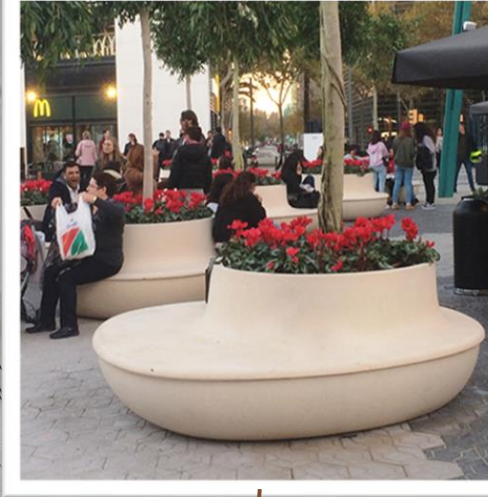
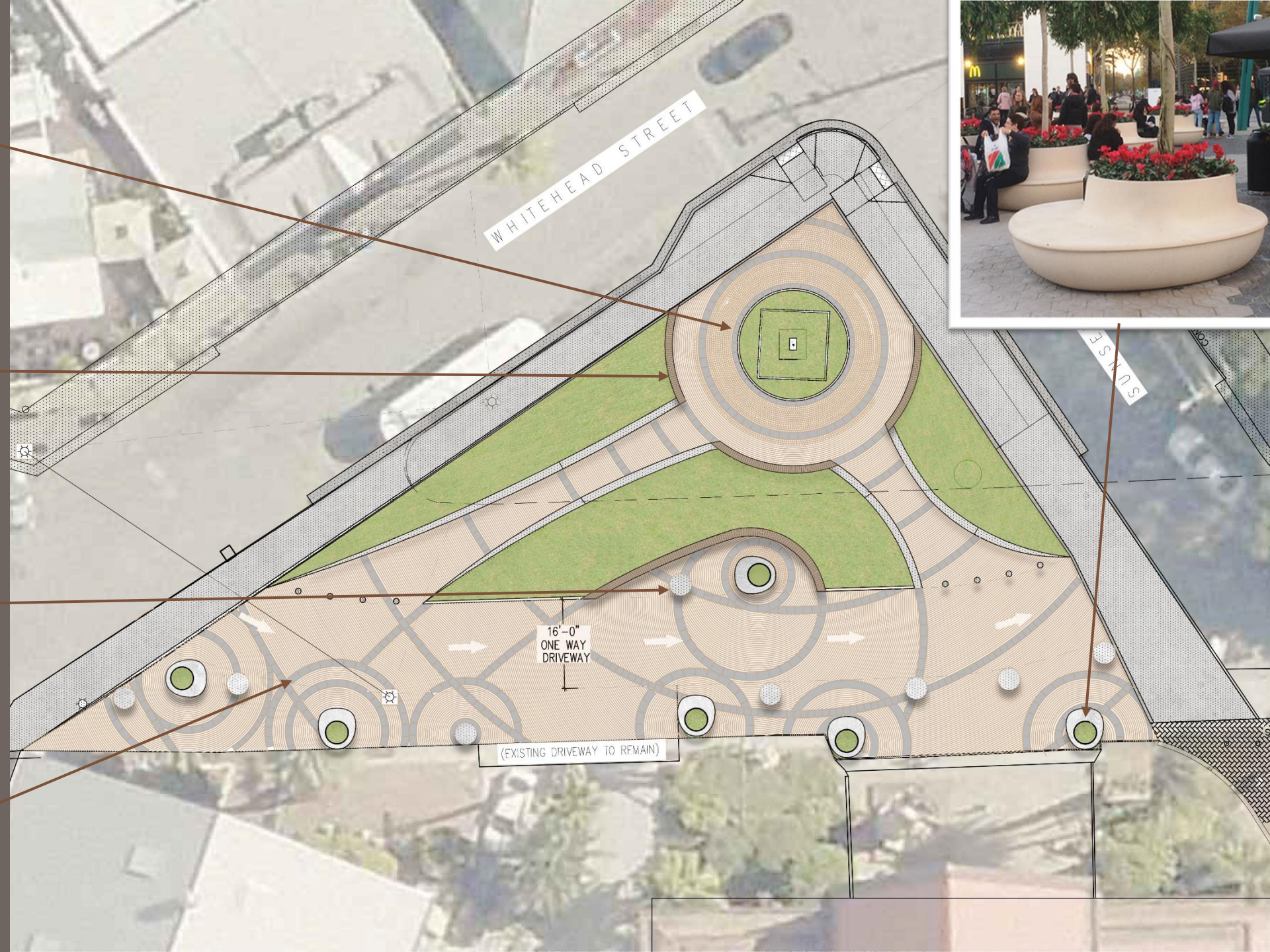
16'-0"  
ONE WAY  
DRIVEWAY

(EXISTING DRIVEWAY TO REMAIN)

BOLLARDS







WHITEHEAD STREET

SUNSET LANE

CONCRETE SIDEWALK

16'-0"  
ONE WAY  
DRIVEWAY

(EXISTING DRIVEWAY TO REMAIN)

SCHULTZ

















Thank you



## CLINTON PARK SQUARE

Create an historic park area for sitting, walking, alcove gathering, resting, meeting, relaxing shaded for the city and its residents.