

Seal:

ELIZABETH NEWLAND
Registered Landscape Architect
LA0001288
State of Florida

Consultants:

Revisions:

KEY WEST SEAPORT HOTEL
KEY WEST, FLORIDA

Drawing Size: 24x36 Project #:

Drawn By: EN Checked By: EN

Title:
LANDSCAPE
PLAN

Sheet Number:

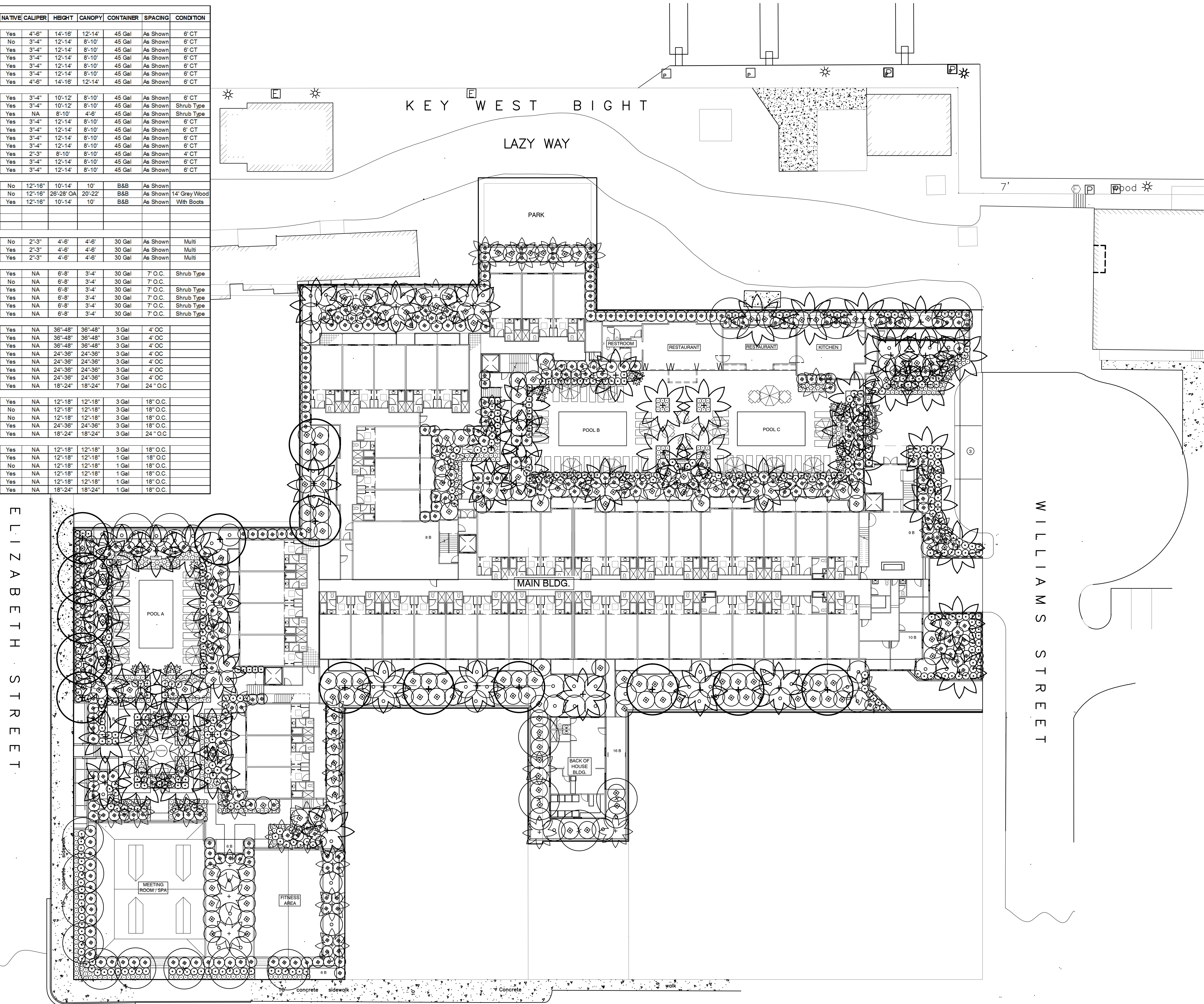
L-1.0

Date: April 18, 2012

SYMBOL	QUANTITY	SCIENTIFIC NAME	COMMON NAME	NATIVE	CALIPER	HEIGHT	CANOPY	CONTAINER	SPACING	CONDITION	
LARGE TREES											
X	BUS	Bursera simaruba	Gumbo Limbo	Yes	4'-6"	14'-16"	12'-14'	45 Gal	As Shown	6' CT	
	CAO	Cananga odorata	Ylang Ylang	No	3'-4"	12'-14'	8'-10'	45 Gal	As Shown	6' CT	
	COU	Coccoloba uvifera	Sea Grape	Yes	3'-4"	12'-14'	8'-10'	45 Gal	As Shown	6' CT	
	CON	Conocarpus erectus	Buttonwood	Yes	3'-4"	12'-14'	8'-10'	45 Gal	As Shown	6' CT	
	PIP	Piscidia piscipula	Jamaican Dogwood	Yes	3'-4"	12'-14'	8'-10'	45 Gal	As Shown	6' CT	
	SIG	Simarouba glauca	Paradise Tree	Yes	3'-4"	12'-14'	8'-10'	45 Gal	As Shown	6' CT	
	SWM	Swietenia mahagoni	Mahogany	Yes	4'-6"	14'-16"	12'-14'	45 Gal	As Shown	6' CT	
	MEDIUM TREES										
x	BOS	Bourreria succulenta	Strongbark	Yes	3'-4"	10'-12'	8'-10'	45 Gal	As Shown	6' CT	
	CAP	Calyptranthes pallens	Spicewood	Yes	3'-4"	10'-12'	8'-10'	45 Gal	As Shown	Shrub Type	
	CES	Conocarpus erectus 'sericeus'	Silver Buttonwood	Yes	NA	8'-10'	4'-6'	45 Gal	As Shown	Shrub Type	
	CLR	Clusia rosea	Pitch Apple	Yes	3'-4"	12'-14'	8'-10'	45 Gal	As Shown	6' CT	
	COD	Coccoloba diversifolia	Pigeon Plum	Yes	3'-4"	12'-14'	8'-10'	45 Gal	As Shown	6' CT	
	COS	Cordia sebestena	Orange Geiger	Yes	3'-4"	12'-14'	8'-10'	45 Gal	As Shown	6' CT	
	GUD	Guajira discolor	Blolly	Yes	3'-4"	12'-14'	8'-10'	45 Gal	As Shown	6' CT	
	GUS	Guaiacum sanctum	Lignum vitae	Yes	2'-3"	8'-10'	8'-10'	45 Gal	As Shown	4' CT	
	GYL	Gymnanthes lucida	Crabwood	Yes	3'-4"	12'-14'	8'-10'	45 Gal	As Shown	6' CT	
	KRF	Krugiodendron ferreum	Ironwood	Yes	3'-4"	12'-14'	8'-10'	45 Gal	As Shown	6' CT	
	LARGE PALMS										
	x	BIN	Bismarkia nobilis	Bismark Palm	No	12'-16"	10'-14'	10'	B&B	As Shown	
CON		Cocos nucifera	Coconut Palm	No	12'-16"	26'-28" OA	20'-22"	B&B	As Shown	14' Grey Wood	
SAP		Sabal palmetto	Palmetto	Yes	12'-16"	10'-14'	10'	B&B	As Shown	With Boots	
MEDIUM PALMS											
x	PTE	Psychosperma elegans	Alexander Palm	No	2'-3"	4'-6"	4'-6"	30 Gal	As Shown	Multi	
	THM	Thrinax morrisii	Key Thatch Palm	Yes	2'-3"	4'-6"	4'-6"	30 Gal	As Shown	Multi	
	THR	Thrinax radiata	Thatch Palm	Yes	2'-3"	4'-6"	4'-6"	30 Gal	As Shown	Multi	
LARGE SHRUBS											
o	CAC	Capparis cynophallophora	Jamaican Caper	Yes	NA	6'-8"	3'-4"	30 Gal	7" O.C.	Shrub Type	
	CLG	Clusia guttifera	Small Leaf Clusia	No	NA	6'-8"	3'-4"	30 Gal	7" O.C.	Shrub Type	
	EUF	Eugenia foetida	Spanish Stopper	Yes	NA	6'-8"	3'-4"	30 Gal	7" O.C.	Shrub Type	
	MFR	Myrcianthes fragrans	Simpson Stopper	Yes	NA	6'-8"	3'-4"	30 Gal	7" O.C.	Shrub Type	
	RAP	Rapanea punctata	Myrsine	Yes	NA	6'-8"	3'-4"	30 Gal	7" O.C.	Shrub Type	
RAA	Randia aculeata	Indigo Berry	Yes	NA	6'-8"	3'-4"	30 Gal	7" O.C.	Shrub Type		
MEDIUM SHRUBS											
o	BRL	Brysonima lucida	Locust Berry	Yes	NA	36"-48"	36"-48"	3 Gal	4" OC		
	ERF	Erihthalia fultcosa	Black Torch	Yes	NA	36"-48"	36"-48"	3 Gal	4" OC		
	CAA	Calliandra americana	Beauty Bush	Yes	NA	36"-48"	36"-48"	3 Gal	4" OC		
	CHI	Chrysobalanus icaco	Cocoplum	Yes	NA	24"-36"	24"-36"	3 Gal	4" OC		
	HAM	Hamelia patens	Firebush	Yes	NA	24"-36"	24"-36"	3 Gal	4" OC		
	PSN	Psychotria nervosa	Wild Coffee	Yes	NA	24"-36"	24"-36"	3 Gal	4" OC		
	SAB	Savia bahamensis	Maiden Bush	Yes	NA	24"-36"	24"-36"	3 Gal	4" OC		
	SER	Serenca repens	Saw Palmetto	Yes	NA	18"-24"	18"-24"	7 Gal	24" O.C.		
SMALL SHRUBS											
o	BOA	Borrchia arborescens	Sea Ox-Eye Daisy	Yes	NA	12"-18"	12"-18"	3 Gal	18" O.C.		
	NEB	Neprolepis biserrata	Macho Fern	No	NA	12"-18"	12"-18"	3 Gal	18" O.C.		
	PHB	Philodendron 'Burle Marx'	Burle Marx Philodendron	No	NA	12"-18"	12"-18"	3 Gal	18" O.C.		
	PLI	Psychotria ligustrifolia	Dwarf Wild Coffee	Yes	NA	24"-36"	24"-36"	3 Gal	18" O.C.		
	TRF	Tripsacum foridanum	Dwarf Fakahatchee	Yes	NA	18"-24"	18"-24"	3 Gal	24" O.C.		
GROUND COVER											
o	ERL	Eriodictyon littoralis	Golden Creeper	Yes	NA	12"-18"	12"-18"	3 Gal	18" O.C.		
	LAD	Lantana depressa	Pineland Lantana	Yes	NA	12"-18"	12"-18"	1 Gal	18" O.C.		
	MIS	Microsorium scolopendrium	Wart Fern	No	NA	12"-18"	12"-18"	1 Gal	18" O.C.		
	NEE	Neprolepis exaltata	Boston Fern	Yes	NA	12"-18"	12"-18"	1 Gal	18" O.C.		
	RUE	Ruellia brittonia	Ruellia	Yes	NA	12"-18"	12"-18"	1 Gal	18" O.C.		
STJ	Stachytarpheta jamaicensis	Porterweed	Yes	NA	18"-24"	18"-24"	1 Gal	18" O.C.			

1 PLANT LIST
SCALE: N.T.S.

2 LANDSCAPE PLAN
SCALE: 1" = 20'-0"

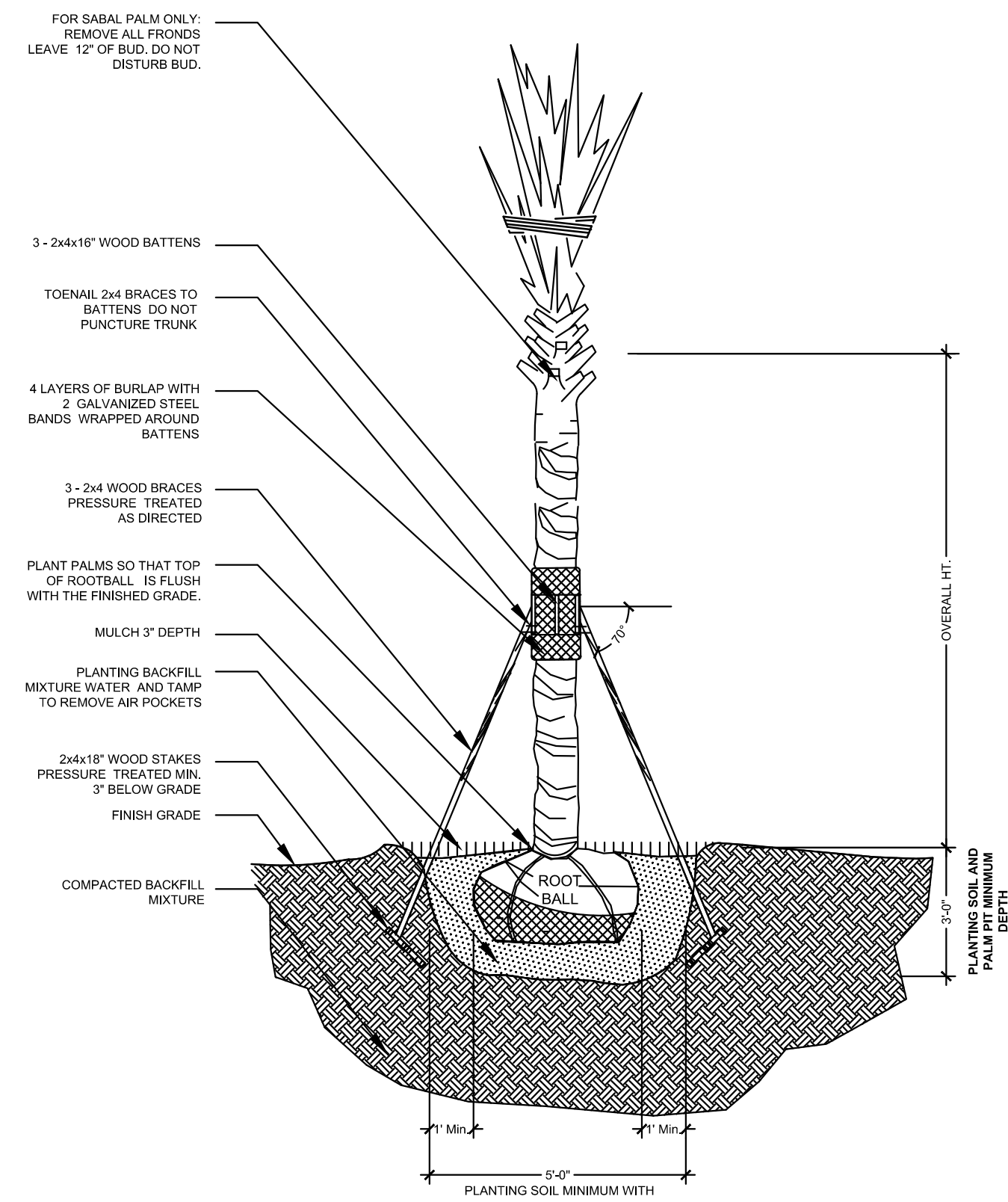


GENERAL NOTES

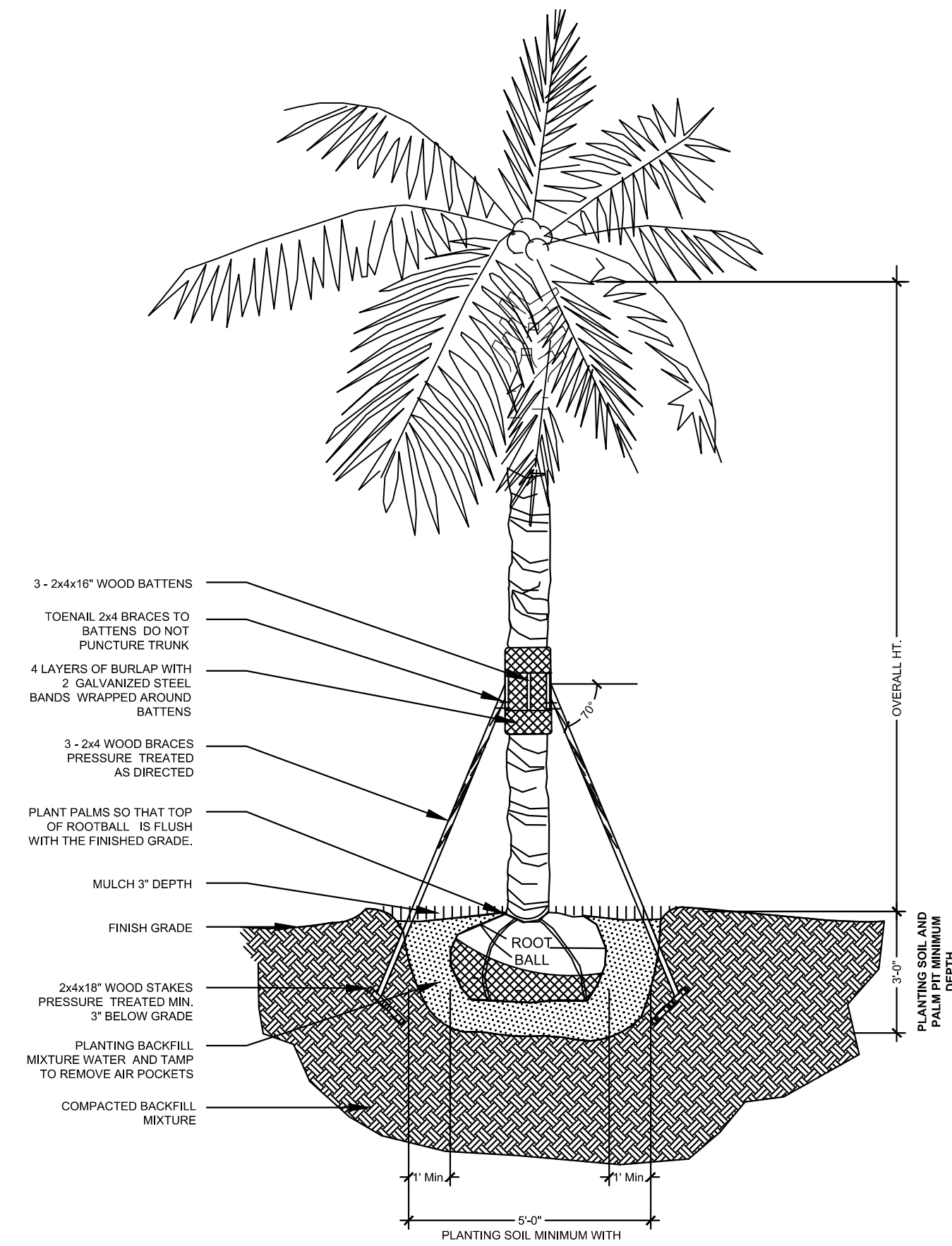
- Landscape Contractor is responsible for verifying locations of all underground and overhead utilities and easements prior to commencing work. All Utility companies and/or the General Contractor and Irrigation Contractor shall be notified to verify existing and proposed utility locations prior to Landscape Contractor digging. The Owner or Landscape Architect shall not be responsible for damage to utility or irrigation lines.
- Landscape Contractor shall examine the site and become familiar with conditions affecting the installation prior to submitting bids. Failure to do so shall not be considered cause for future extras or complaints.
- Landscape Contractor is responsible for verifying all plant quantities prior to bidding and within (7) seven calendar days of receipt of these plans shall notify the Landscape Architect in writing of any and all discrepancies. In case of discrepancies planting plan quantities shall take precedence over plant list quantities. No substitutions are to be made without prior consent of the Landscape Architect. Alternate plant material shall meet same specifications as original selection. Plant material supply is the responsibility of the Landscape Contractor, and he/she shall take steps to insure availability at time of planting.
- All plant material shall meet or exceed the size on the plant list. In all cases meeting the height and the spread specifications shall take precedence over container size.
- The Landscape Contractor is to remove and discard from site existing unwanted trees, palms, shrubs, groundcovers, sod and weeds within landscape areas.
- Landscape Contractor to provide finish grade in plant beds and planters 3" lower than finish elevation of hardscape elements to accommodate 3" layer of mulch. Hardscape elements include roads, driveways, curbs, sidewalks and planters.

PLANTING NOTES

- Landscape Contractor shall furnish and install all trees, palms, shrubs, groundcover, sod, planting soil, fertilizer, herbicide, pre-emergence herbicide, gravel, and mulch.
- Landscape Contractor shall guarantee all plant material for a period of one year from the day of final acceptance by the Landscape Architect and Owner.
- All plant material shall be Florida #1 or better, as defined in the Grades and Standards for Nursery Plants, Part I and II by the State of Florida Department of Agriculture.
- Landscape Contractor is responsible for scheduling a nursery visit for Landscape Architect to approve all trees, palms and shrubs prior to delivery to the project site.
- Landscape Contractor is responsible for scheduling a site stake out approval by Landscape Architect to approve the stake out of all trees and palms prior to installation.
- Landscape Contractor is responsible for scheduling a site stake out approval by Landscape Architect to approve stake out of all shrubs prior to installation.
- Landscape Contractor shall coordinate work with that of the Irrigation Contractor.
- The Landscape Contractor shall treat new plant areas with preemergence herbicide after weeds and grass have been removed. Landscape Contractor shall wait (7) seven days after preemergence treatment prior to planting.
- The Landscape Contractor shall maintain all finish grades for existing berms and swales established by General Contractor. Any impacts to elevations of berms or swales as a result of plant material installation shall be repaired to correct finish grade prior to installing mulch, sod or gravel.
- Planting soil shall be a mix of 50% inland muck and 50% freshwater sand. Planting soil mix/backfill shall be clean and free of construction debris, weeds, rock and noxious pests and disease.
- All soil mix in plant beds for groundcovers, shrubs, palms and trees shall be as per details.
- All planting areas and planting pits shall be tested for sufficient percolation prior to final planting and irrigation installation to ensure proper drainage. Plant beds in parking lots and in areas compacted by heavy equipment shall be de-compacted so that drainage is not impeded.
- All synthetic burlap, string, cords or wire baskets shall be removed before trees are planted. All synthetic tape shall be removed from branches and trunks prior to final acceptance. The top 1/3 of the burlap shall be removed or tucked into the plant pit before the trees are backfilled.
- Landscape Contractor is responsible for mulching all plant beds with a minimum 3" layer of natural color Eucalyptus or Enviromulch immediately after planting. In no case shall Cypress mulch or red color mulch be used.
- Landscape Contractor shall guy and stake all trees and palms as per specifications and details. No paint shall be applied to any surface of trees or palms. No nails, screws or wiring shall penetrate the outer surface of trees and palms. All guying and staking shall be removed twelve months after planting.
- All palm and tree guy wires and bracing are to be flagged for visibility for their duration. All unattended and unplanted tree pits shall be properly barricaded and flagged during construction.
- All broken branches and clear trunk branches are to be pruned according to ANSI A-300 Guidelines for Tree Pruning to min. 6'-0" height clearance to the base of canopy if specified as clear trunk specimen in plant list.
- Landscape Contractor to provide all plants with watering as indicated below or until such time that a permanent irrigation system has been installed that provides 100% coverage of landscape:
 First Month-Daily Watering, Second Month-3 Times Per Week, Third and Fourth Month-2 Times Per Week, Last Eight Months-1 Time Per Week. At each watering procedure apply to the top of the root ball 2-3 gallons of water per inch of trunk caliper. At each watering procedure apply 1/2" -3/4" evenly over sod.
- Landscape Contractor to provide all plants with fertilizer 30 days after installation. Fertilizer shall comply with state fertilizer laws. It shall have a chemical designation as indicated for each type of plant:
 Palms: 12-4-12 N-P-K, Slow Release Palm Special with micronutrients.
 Shrubs, Groundcover and Trees: 6-6-6 N-P-K, with micronutrients.
 Sod: 10-10-10 N-P-K, Slow Release.

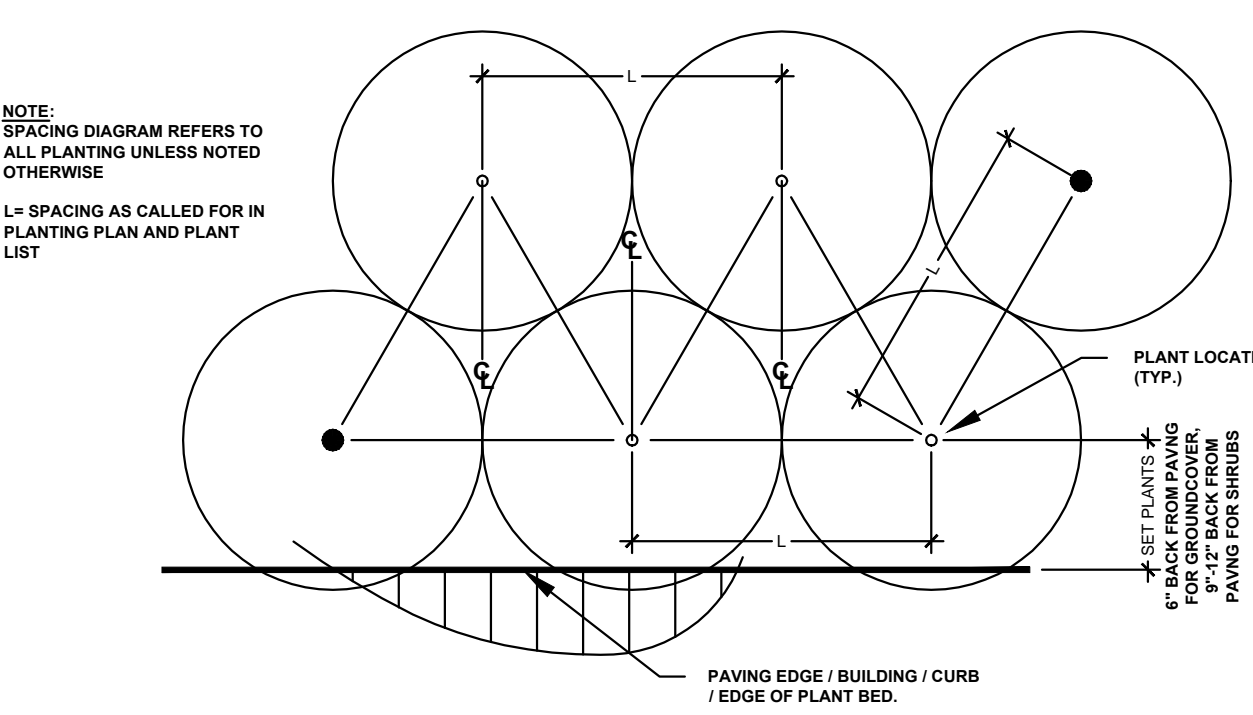


02 **SABAL PALM PLANTING DETAIL**
 L-3.0 SCALE: N.T.S.

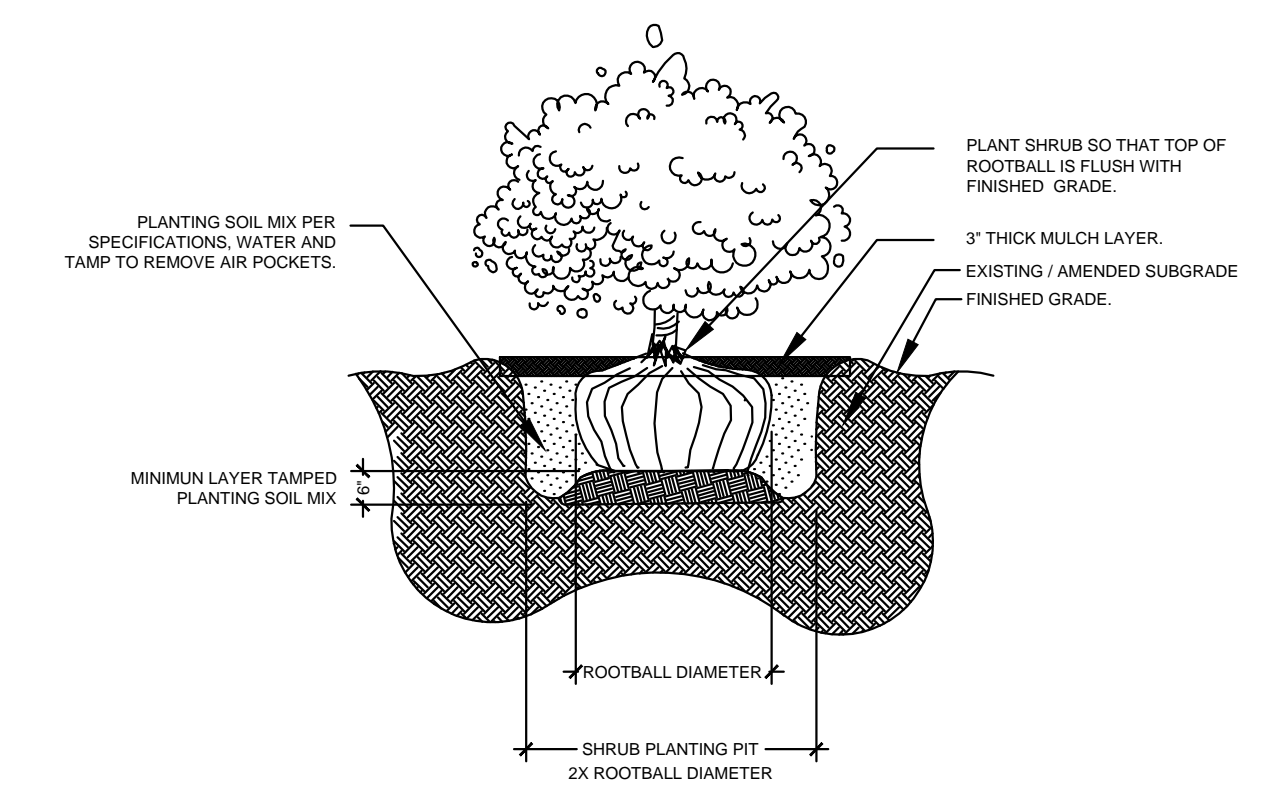


03 **PALM PLANTING DETAIL**
 L-3.0 SCALE: N.T.S.

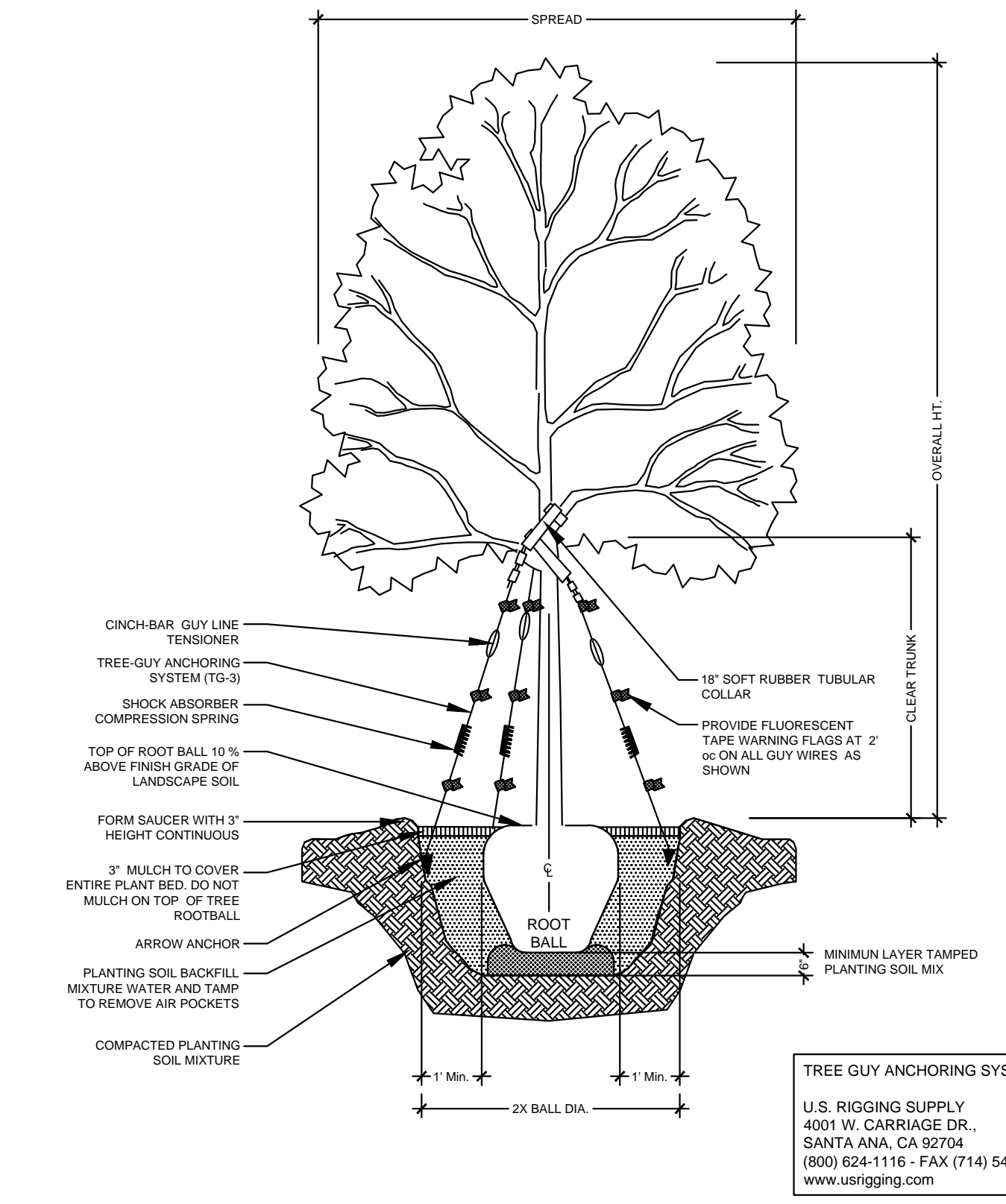
01 **PLANTING NOTES**
 L-3.0 SCALE: N.T.S.



04 **SHRUB PLANTING DETAIL**
 L-3.0 SCALE: N.T.S.



05 **SHRUB PLANTING DETAIL**
 L-3.0 SCALE: N.T.S.



06 **TREE PLANTING DETAIL**
 L-3.0 SCALE: N.T.S.

ELIZABETH NEWLAND
 LANDSCAPE ARCHITECTURE, LLC

2525 Ponce de Leon Blvd., Suite 300
 Coral Gables, Florida 33134
 305.481.6301
 liznewland@bellsouth.net

Seal:

ELIZABETH NEWLAND
 Registered Landscape Architect
 # LA0001288
 State of Florida

Consultants:

Revisions:

KEY WEST SEAPORT HOTEL
 KEY WEST, FLORIDA

Drawing Size: 24x36 | Project #:
 Drawn By: EN | Checked By: EN
 Title: **PLANTING NOTES & DETAILS**
 Sheet Number: **L-2.0**
 Date: April 18, 2012