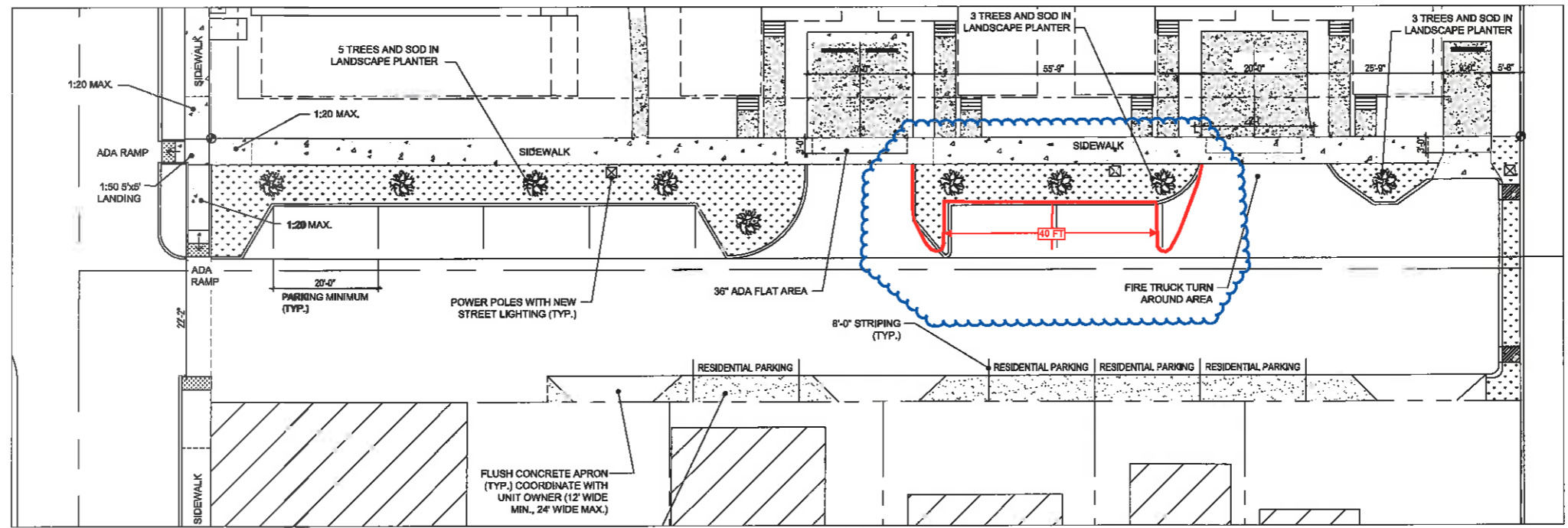


2 SIMONTON AND VIRGINIA TYPICAL STREET CORNER
SCALE: 1/4" = 1'-0"

- GENERAL NOTES**
1. CONCRETE SIDEWALKS SHALL HAVE A RUNNING SLOPE OF NO MORE THAN 1:20 AND A CROSS SLOPE OF NO MORE THAN 1:48.
 2. DETECTABLE WARNINGS WILL BE IN ACCORDANCE WITH FDOT INDEX 304.
 3. CURBS SHALL BE PER DETAILS ON DRAWING A4.1.1.
 4. NORTH AND SOUTH SIDES OF VIRGINIA STREET AND SIMONTON STREET INTERSECTION ARE TYPICAL.
 5. DO NOT SCALE OFF THIS DRAWING.



1 VIRGINIA STREET SIDEWALK AND CURBING PLAN
SCALE: 3/32" = 1'-0"

**ANNALISE MANNIX, P.E.,
M.S., M. ASCE**

**ANNALISE MANNIX
ENGINEERING
AND CONSULTING, LLC**
3739 Paula Avenue
Key West, Florida 33040

Tel: 305-797-0463
Email: amannix@aol.com
FLORIDA REG. P.E. #57533
CA #27779

Submissions:
ORIG PLANNING REVIEW:
10 APR 2013
HARC REVIEW:
30 APR 2013
POST DRC PLANNING REVIEW:
1 MAY 2013
CONSTRUCTION DOCUMENTS:
22 SEPTEMBER 2014

Revisions:
REV - 02 AUGUST 2015

**SOUTHERNMOST CABANA RESORT
SOUTHERNMOST CABANA RESORT L.L.C.
1015 - 1027 Simonton Street
Key West 33040**

Title:
**SIDEWALK
AND CURBING
PLAN**

Sheet Number:
A1.1.3
Date: 22 SEPTEMBER 2014

Handwritten signature and date: 9/17/15