



COOPER CARRY

Site B

3850 N. Roosevelt Boulevard
Key West, FL 33040

Key West Hotel Collection

TREES & PALMS TO BE REMOVED

Type	Size	Quantity	Size	Quantity
Palm	8'	3	18'	5
	10'	11	20'	4
	12'	2	22'	1
	13'	1	23'	2
	14'	2	24'	1
	16'	3	26'	1
	17'	3		
Coconut Palm	14'	2	22'	3
	16'	3	24'	1
	18'	7	26'	1
	20'	2		
Rubber Tree	18'	1	20'	1
Gumbo Limbo	12'	1	18'	1
	14'	1	20'	2
	16'	2	22'	1
	17'	1	23'	1
Ficus	14'	1		
Unknown	12'	2	24'	1
	20'	1		

TREES & PALMS TO REMAIN IN PLACE

Type	Size	Quantity	Size	Quantity
Palm	8'	1	18'	1
	10'	1	19'	2
	13'	1	20'	1
	16'	2	24'	1
	17'	2	26'	1
Coconut Palm	16'	1	20'	1
	18'	6		
Hong Kong Tulip	32'	1		
Ficus	18'	1		

PROPOSED LANDSCAPE TREE/PALM CALCULATIONS

149 Trees New	128 Trees on Key West Plant List	
110 Palms New	78 Palms on Key West Plant List	
259 New Trees & Palms	206 Trees & Palms on Key West Plant List	79%

Site B

3850 N. Roosevelt Boulevard
Key West, FL 33040

Key West Hotel Collection

PROPOSED PLANT LIST REVISIONS

Sea Grape (*Cocoloba uvifera*) replaced with Wax Myrtle (*Myrica cerifera*)

Weeping Fig (*Ficus benjamina*) removed

Loblolly Bay (*Gordonia lasianthis*) replaced with Dahoon Holly (*Ilex cassine dahoon*)

Live Oak (*Quercus virginiana*) replaced with Buttonwood (*Conocarpus erectus*)



COOPERCARRY

ATLANTA WASHINGTON NEW YORK NEWPORT BEACH

© Copyright Cooper Carry 2013

SCOPE DOCUMENTS

The Construction Documents have not been completed therefore this drawing may be incomplete or not coordinated. The documents issued indicate the general scope of the Project. The Contractor is responsible for complete and coordinated pricing and Work, and shall include all items necessary for the proper execution and completion of the Project, whether indicated or not. All components of the Project shall comply with any and all requirements of national, state, and local codes. The Contractor shall inform the Owner and Architect of any omissions, inconsistencies or errors in the information provided. If no notice is given and any omissions, inconsistencies or errors are discovered, the Architect's decisions on items of Work included in the scope shall be binding on the Contractor, when consistent with the general scope and quality of the Project.

ISSUANCES

No.	Drawing Issue Description	Date
	DEVELOPMENT PLAN	02/01/2013
	TREE PERMIT APPLICATION	02/20/2013

KEY WEST HOTEL COLLECTION
HILTON GARDEN INN (SITE B)

3850 North Roosevelt Boulevard
Key West, Florida 33040

J.L. Woode Ltd.

EXISTING
SITE PLAN

BOB NEAL	20120295
Principal-in-Charge	Project No.
MANNY DOMINGUEZ	02/01/2013
Design Director	Date
ANDRES RUBIO	
Project Manager	
T.JACK BAGBY	
Project Architect	

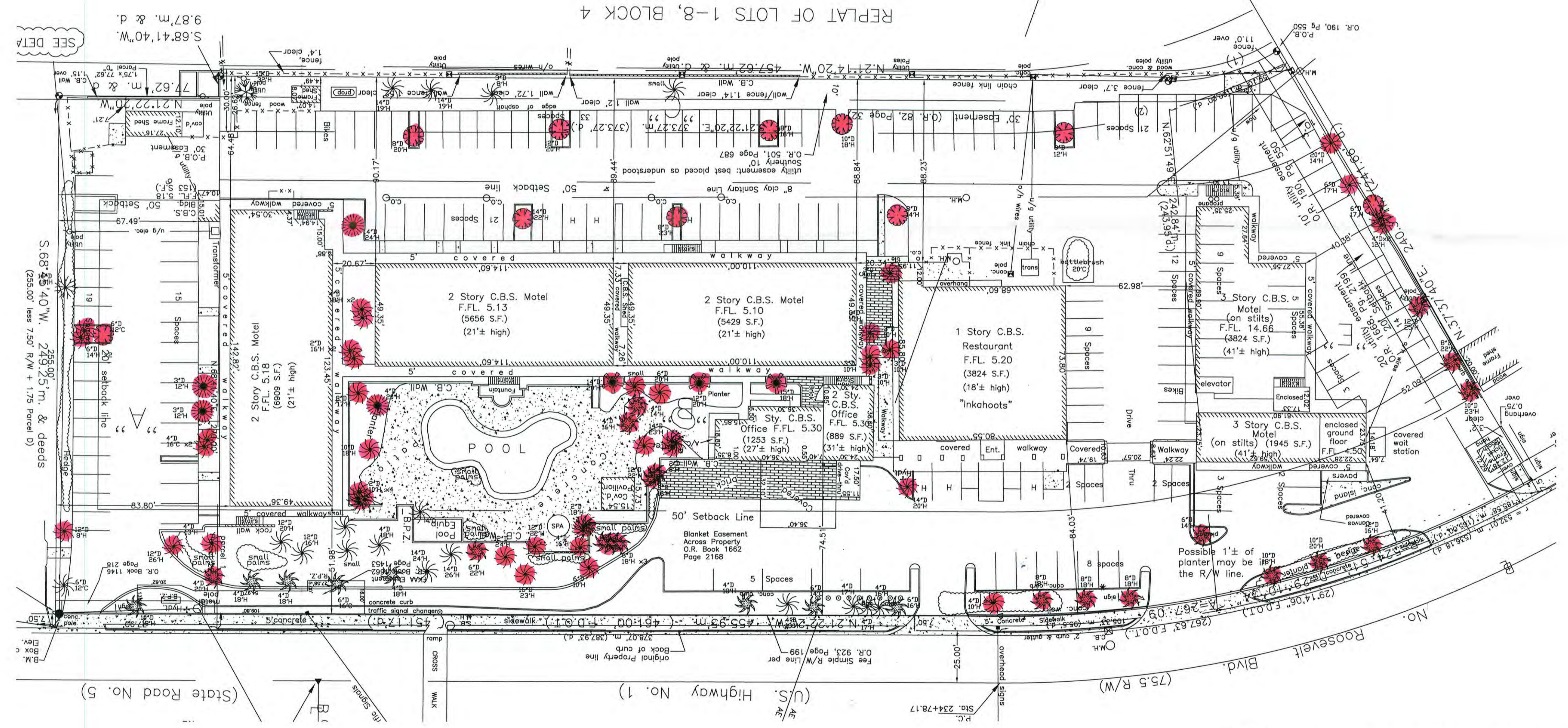
L2.00

ISSUED FOR TREE PERMIT APPLICATION ONLY

EXISTING TREE LEGEND

- 6" D = Diameter of tree.
- 12" C = Canopy diameter of tree.
- = Palm
- = Almond
- = Buttonwood
- = Tree, Unknown
- = Coconut
- = Pine
- = Gumbo Limbo
- = Umbrella
- = Ficus
- = Papaya
- = Rubber
- = Hong Kong Tulip
- = Seagrape

EXISTING TREE TO BE REMOVED



NOTE: SURVEY DONE BY OTHERS.
ALL INVASIVE EXOTIC PLANTS TO BE REMOVED.

1 EXISTING SITE PLAN
SCALE: 1" = 30'-0"



COOPERCARRY

ATLANTA WASHINGTON NEW YORK NEWPORT BEACH

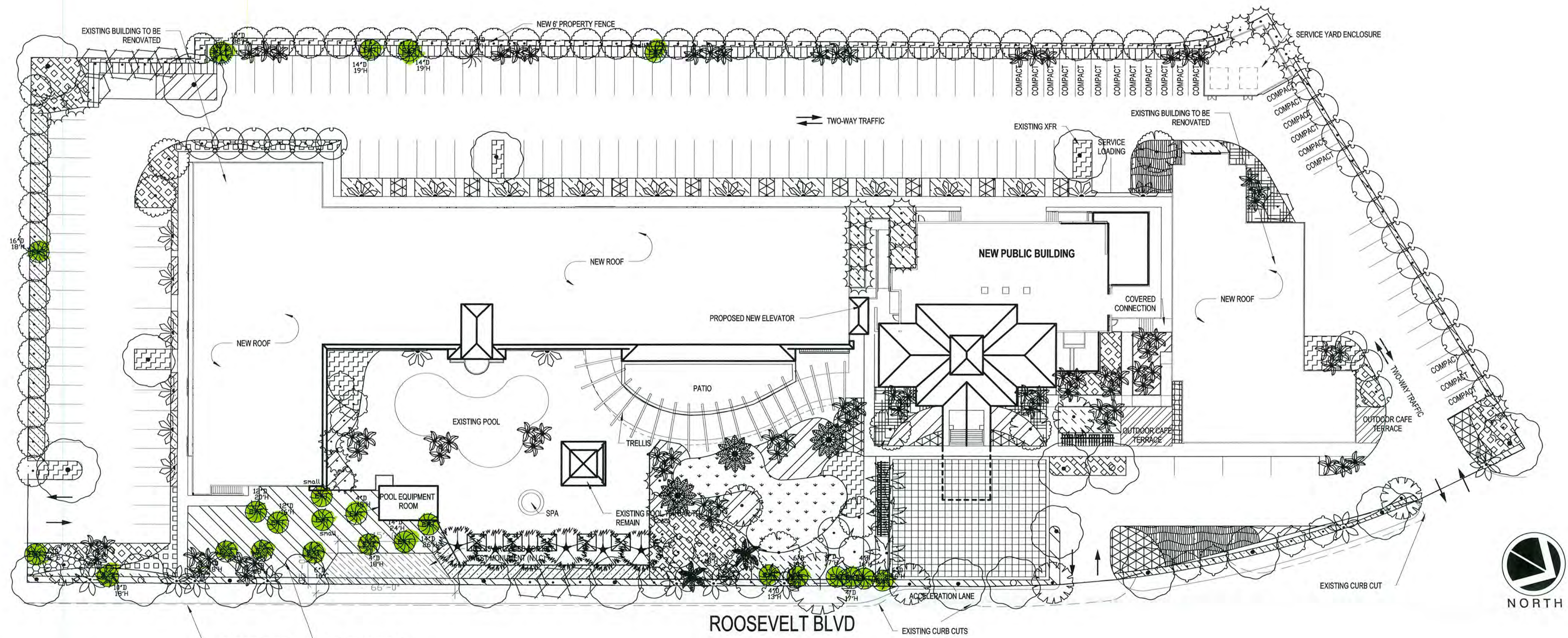
© Copyright Cooper Carry 2013

SCOPE DOCUMENTS

The Construction Documents have not been completed therefore this drawing may be incomplete or not coordinated. The documents issued indicate the general scope of the Project. The Contractor is responsible for complete and coordinated pricing and Work, and shall include all items necessary for the proper execution and completion of the Project, whether indicated or not. All components of the Project shall comply with any and all requirements of national, state, and local codes. The Contractor shall inform the Owner and Architect of any omissions, inconsistencies or errors in the information provided. If no notice is given and any omissions, inconsistencies or errors are discovered, the Architect's decisions on items of Work included in the scope shall be binding on the Contractor, when consistent with the general scope and quality of the Project.

ISSUANCES

No.	Drawing Issue Description	Date
	DEVELOPMENT PLAN	02/01/2013
	TREE PERMIT APPLICATION	02/20/2013



1 LANDSCAPE PLAN
L1.00 SCALE: 1" = 30'-0"

TREE PERMIT APPLICATION NOTES
 PALMS TO BE REPLACED: 62
 NATIVE PALMS PLANTED: 31
 NON NATIVE PALMS TO BE PLANTED: 38
 CANOPY TREES TO BE REPLACED: 18
 NATIVE CANOPY TREES TO BE PLANTED: 149
 NON NATIVE CANOPY TREES TO BE PLANTED: 21
 EXISTING TREES TO REMAIN ON SITE: 23

NOTE:
ALL TREES AND PALMS TO BE FLORIDA GRADE #1

EXISTING TREE LEGEND
6"D = Diameter of tree.
12"C = Canopy diameter of tree.

- = Palm
- = Almond
- = Buttonwood
- = Tree, Unknown
- = Coconut
- = Pine
- = Gumbo Limbo
- = Umbrella
- = Ficus
- = Papaya
- = Rubber
- = Hong Kong Tulip
- = Seagrape

EXISTING TREE TO REMAIN

SYMBOL	QTY	BOTANICAL NAME	COMMON NAME	SIZE	SPEC.
	4	BURETTIA SPANISH	COCONUT PALM	8-10 FT	70AL
	47	ANACARDIUM OCCIDENTALE	WALNUT	12 FT	10-02 HT
	2	CONOCARPUS ERECTUS	BUTTERWOOD	8-10 FT	6-16 HT, MAINTENANCE
	7	CORONIA SPINOSA	ORANGE GINGER TREE	8-10 FT	6-16 HT
	24	EXISTING TREES TO REMAIN			
	1	PROSTREA MANGROVIA	PROSTREA MANGROVIA	8-10 FT	10-02 HT
	1	COCCOON PALM	COCCOON PALM	8-10 FT	6-16 HT
	31	ALYX CASSING	ALYX CASSING	8-10 FT	6-16 HT
	1	YUKON WILLY	YUKON WILLY	6-12 FT	
	9	COCCOON PALM	COCCOON PALM	8-10 FT	10-12 HT
	17	COCCOON PALM	COCCOON PALM	8-10 FT	70AL
	8	PARASOL TREE	PARASOL TREE	8-10 FT	6-16 HT
	4	WEST BROW PALM	WEST BROW PALM	8-10 FT	14-18 HT
	9	COCCOON PALM	COCCOON PALM	EXISTING	12 FT
	6	CAROLINA DATE PALM	CAROLINA DATE PALM	70	12 FT
	2	DATE PALM	DATE PALM	70	12 FT
	3	BENIGAL DATE PALM	BENIGAL DATE PALM	70	MULTIFRUIT 12-14 HT
	18	TRAVELER'S TREE	TRAVELER'S TREE	70	10-12 HT
	3	FLORIDA ROYAL PALM	FLORIDA ROYAL PALM	70	14 FT
	28	CABBAGE PALMETTO	CABBAGE PALMETTO	70	12 FT
	28	CABBAGE PALMETTO	CABBAGE PALMETTO	70	12 FT
	28	CABBAGE PALMETTO	CABBAGE PALMETTO	70	14 FT
	32	CABBAGE PALMETTO	CABBAGE PALMETTO	70	14 FT
	800	SWAMP FERN	SWAMP FERN	3-6" @ 30" OC	
	400	COCCOON PALM	COCCOON PALM	3-6" @ 30" OC	
	400	COCCOON PALM	COCCOON PALM	3-6" @ 30" OC	
	140	RED BURN	RED BURN	3-6" @ 30" OC	
	318	GRANT BURN	GRANT BURN	3-6" @ 30" OC	
	60	YUKON WILLY	YUKON WILLY	6-12 FT	
	14	WALNUT	WALNUT	3-6" @ 30" OC	
	1,000	FLORIDA ROYAL PALM	FLORIDA ROYAL PALM	1-6" @ 12" OC	
	200	SWAMP FERN	SWAMP FERN	3-6" @ 48" OC	
	1,200	SEA GRASS	SEA GRASS	3-6" @ 12" OC	
	100	CABBAGE PALM	CABBAGE PALM	3-6" @ 48" OC	
	140	COCCOON	COCCOON	3-6" @ 30" OC	
	2,400	SWAMP FERN	SWAMP FERN	1-6" @ 12" OC	
	600	SEVEN SISTERS	SEVEN SISTERS	1-6" @ 12" OC	
	2,000	ST. AUGUSTINE GRASS	ST. AUGUSTINE GRASS	300	
	400	SPRINGBRIGHT	SPRINGBRIGHT	1-6" @ 12" OC	

KEY WEST HOTEL COLLECTION
HILTON GARDEN INN (SITE B)

3850 North Roosevelt Boulevard
Key West, Florida 33040

J.L. Woode Ltd.

CONCEPTUAL LANDSCAPE PLAN

BOB NEAL	20120295
Principal-in-Charge	Project No.
MANNY DOMINGUEZ	02/01/2013
Design Director	Date
ANDRES RUBIO	
Project Manager	
T.JACK BAGBY	
Project Architect	

L1.00