



BERMELLO AJAMIL & PARTNERS • INC

Architecture • Engineering • Planning
Interior Design • Landscape Architecture
2601 South Bayshore Drive
Suite 1000
Miami, Florida 33133
(305) 859-2050
Fax (305) 860-3700

PREPARED FOR/OWNER:
CITY OF KEY WEST, FL
P. O. BOX 1409
3140 FLAGLER AVENUE
KEY WEST, FL 33041

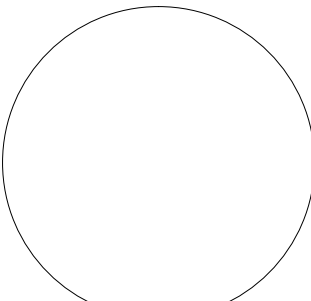


PROJECT NAME:
**TRUMAN
WATERFRONT
PARK**

PROJECT LOCATION/ADDRESS:
TRUMAN WATERFRONT PARK
WEST OF FORT STREET AND THE
TRUMAN ANNEX DEVELOPMENT,
NORTH OF KEY WEST NAVAL BASE

SUB-CONSULTANT INFORMATION:

PROFESSIONAL SEAL:



KIRK J. OLNEY
FLORIDA REGISTERED LANDSCAPE
LA0001705

SUBMITTAL DESCRIPTION / MILESTONE:

**DEVELOPMENT
APPLICATION
March 3, 2014**

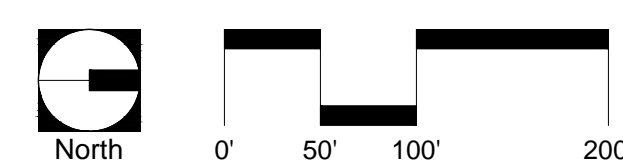
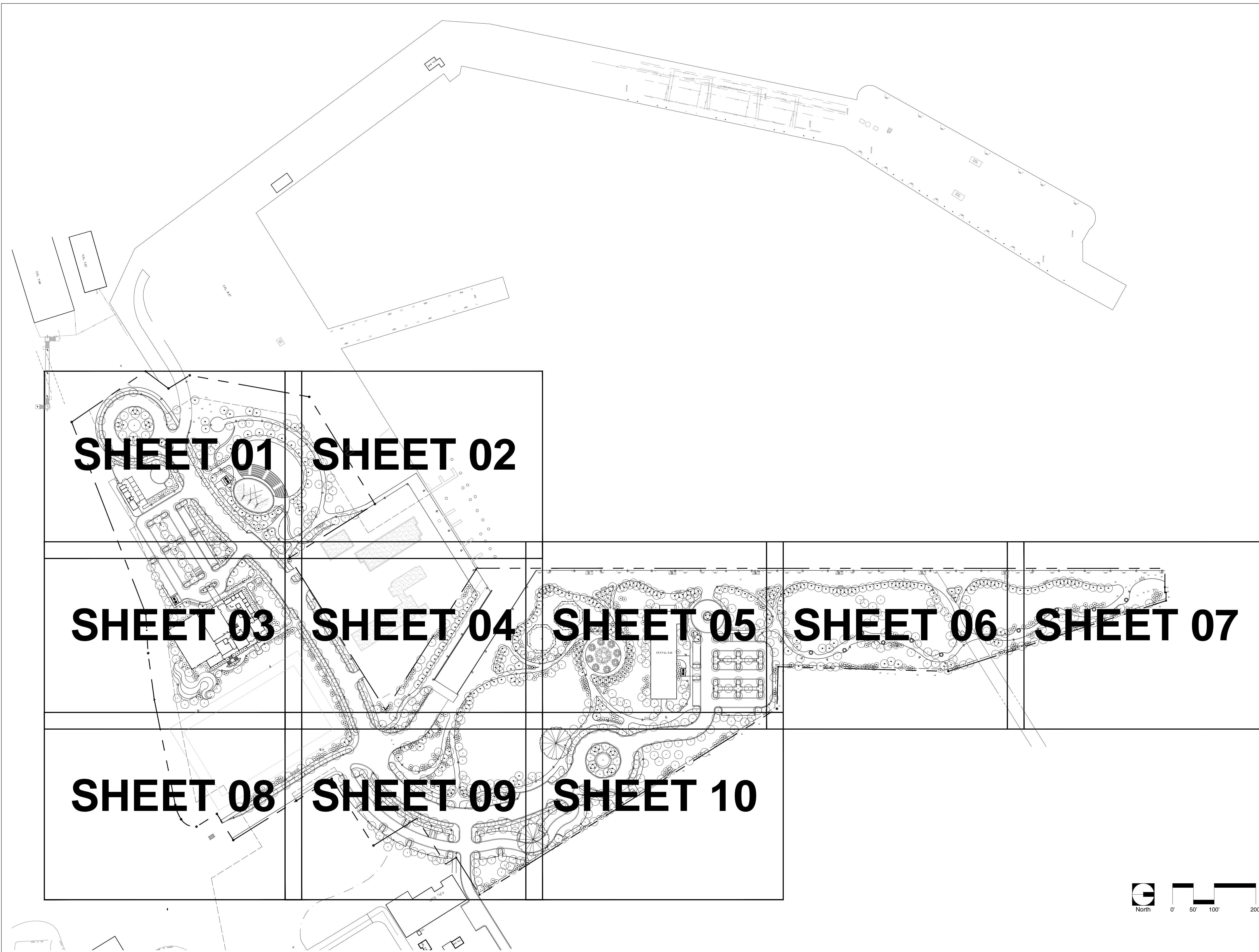
REVISIONS:

DRAWING SHEET INFORMATION

BA PROJECT NO.: 12010
SCALE: 1" = 100'-0"
DATE: February 12, 2014
DRAWN BY: KJO
CHECKED BY: RPH
CADD FILE: X:\Truman Waterfront Base.dwg

DRAWING TITLE:
**LANDSCAPE
PLAN
KEY SHEET**
SHEET NO.

LL-00



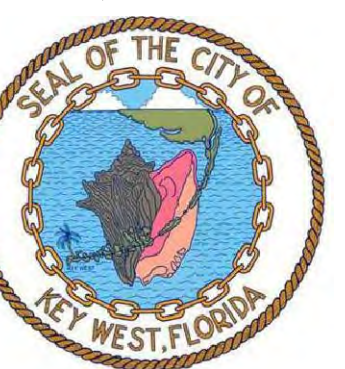
NOTE:
FOR TREE SYMBOL
LEGEND SEE LL-11



**BERMELLO AJAMIL
& PARTNERS • INC**

Architecture • Engineering • Planning
Interior Design • Landscape Architecture
2601 South Bayside Drive
Suite 1000
Miami, Florida 33133
(305) 859-2050
Fax (305) 860-3700

PREPARED FOR/OWNER:
CITY OF KEY WEST, FL
P. O. BOX 1409
3140 FLAGLER AVENUE
KEY WEST, FL 33041

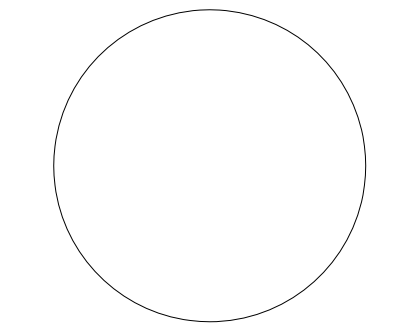


PROJECT NAME:
**TRUMAN
WATERFRONT
PARK**

PROJECT LOCATION/ADDRESS:
**TRUMAN WATERFRONT PARK
WEST OF FORT STREET AND THE
TRUMAN ANNEX DEVELOPMENT,
NORTH OF KEY WEST NAVAL BASE**

SUB-CONSULTANT INFORMATION:

PROFESSIONAL SEAL:



KIRK J. OLNEY
FLORIDA REGISTERED LANDSCAPE
LA0001705

SUBMITTAL DESCRIPTION / MILESTONE:

**DEVELOPMENT
APPLICATION
March 3, 2014**

REVISIONS:

NO.	DESCRIPTION

DRAWING SHEET INFORMATION

BA PROJECT NO.: 12010
SCALE: 1" = 20'-0"
DATE: February 12, 2014
DRAWN BY: KJO
CHECKED BY: RPH
CADD FILE: X:\Truman Waterfront Base.dwg

DRAWING TITLE:
**LANDSCAPE
PLAN**

SHEET NO.

LL-01



**BERMELLO AJAMIL
& PARTNERS • INC**

Architecture • Engineering • Planning
Interior Design • Landscape Architecture
2601 South Bayshore Drive
Suite 1000
Miami, Florida 33133
(305) 859-2050
Fax (305) 860-3700

PREPARED FOR/OWNER:
CITY OF KEY WEST, FL
P. O. BOX 1409
3140 FLAGLER AVENUE
KEY WEST, FL 33041



PROJECT NAME:

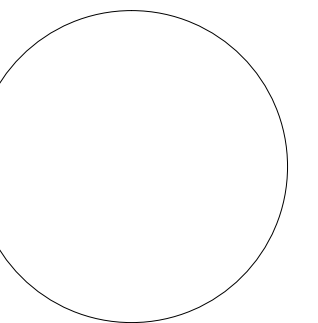
**TRUMAN
WATERFRONT
PARK**

PROJECT LOCATION/ADDRESS:

TRUMAN WATERFRONT PARK
WEST OF FORT STREET AND THE
TRUMAN ANNEX DEVELOPMENT,
NORTH OF KEY WEST NAVAL BASE

SUB-CONSULTANT INFORMATION:

PROFESSIONAL SEAL:



KIRK J. OLNEY
FLORIDA REGISTERED LANDSCAPE
LA0001705

SUBMITTAL DESCRIPTION / MILESTONE:

**DEVELOPMENT
APPLICATION
March 3, 2014**

REVISIONS:

DRAWING SHEET INFORMATION

BA PROJECT NO.: 12010
SCALE: 1" = 20'-0"
DATE: February 12, 2014
DRAWN BY: KJO
CHECKED BY: RPH
CADD FILE: X:\Truman Waterfront Base.dwg

DRAWING TITLE:

**LANDSCAPE
PLAN**

SHEET NO.

LL-02



MATCHLINE - SHEET 01
MATCHLINE - SHEET 03

MATCHLINE - SHEET 01
MATCHLINE - SHEET 03

NOTE:
FOR TREE SYMBOL
LEGEND SEE LL-11

PROPERTY BOUNDARY

50' NAVAL SETBACK

PROPERTY BOUNDARY

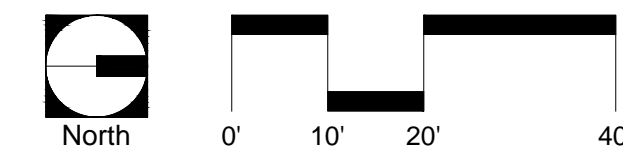
PROPERTY BOUNDARY

50' NAVAL SETBACK

MATCHLINE - SHEET 03
MATCHLINE - SHEET 04

MATCHLINE - SHEET 03
MATCHLINE - SHEET 08

MATCHLINE - SHEET 03
MATCHLINE - SHEET 08



**BERMELLO AJAMIL
& PARTNERS • INC**

Architecture • Engineering • Planning
Interior Design • Landscape Architecture
2601 South Bayshore Drive
Suite 1000
Miami, Florida 33133
(305) 859-2050
Fax (305) 860-3700

PREPARED FOR/OWNER:
CITY OF KEY WEST, FL
P. O. BOX 1409
3140 FLAGLER AVENUE
KEY WEST, FL 33041



PROJECT NAME:

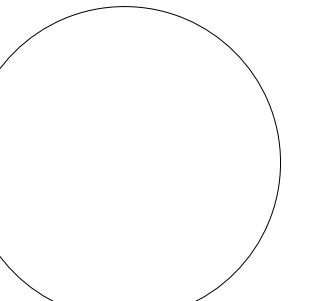
**TRUMAN
WATERFRONT
PARK**

PROJECT LOCATION/ADDRESS:

TRUMAN WATERFRONT PARK
WEST OF FORT STREET AND THE
TRUMAN ANNEX DEVELOPMENT,
NORTH OF KEY WEST NAVAL BASE

SUB-CONSULTANT INFORMATION:

PROFESSIONAL SEAL:



KIRK J. OLNEY
FLORIDA REGISTERED LANDSCAPE
LA0001705

SUBMITTAL DESCRIPTION / MILESTONE:

**DEVELOPMENT
APPLICATION
March 3, 2014**

REVISIONS:

DRAWING SHEET INFORMATION

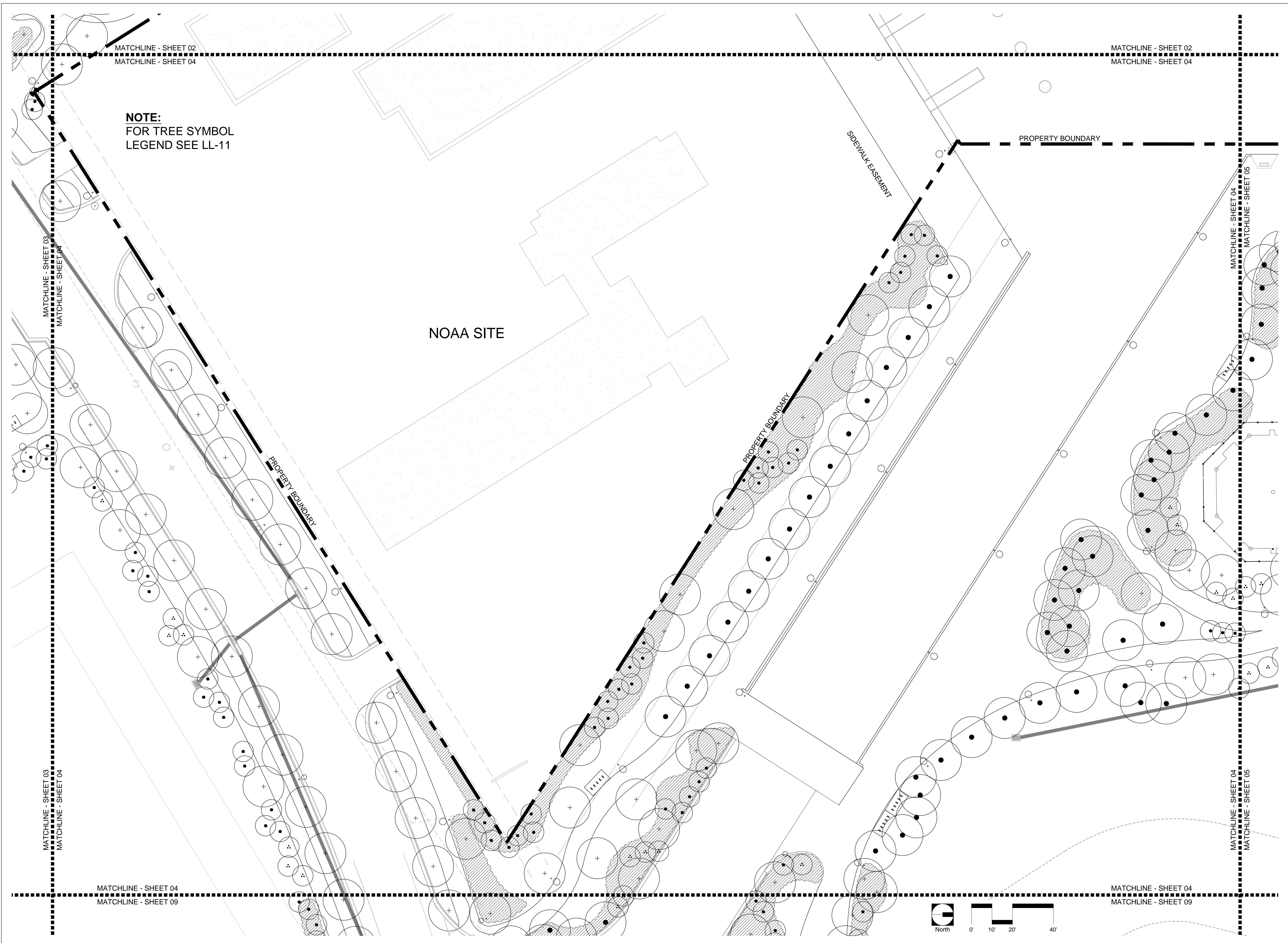
BA PROJECT NO.: 12010
SCALE: 1" = 20'-0"
DATE: February 12, 2014
DRAWN BY: KJO
CHECKED BY: RPH
CADD FILE: X:Truman Waterfront Base.dwg

DRAWING TITLE:

**LANDSCAPE
PLAN**

SHEET NO.

LL-03



NOTE:
FOR TREE SYMBOL
LEGEND SEE LL-11

NOAA SITE

SIDEWALK EASEMENT

PROPERTY BOUNDARY

PROPERTY BOUNDARY

MATCHLINE - SHEET 02
MATCHLINE - SHEET 04

MATCHLINE - SHEET 02
MATCHLINE - SHEET 04

MATCHLINE - SHEET 03
MATCHLINE - SHEET 04

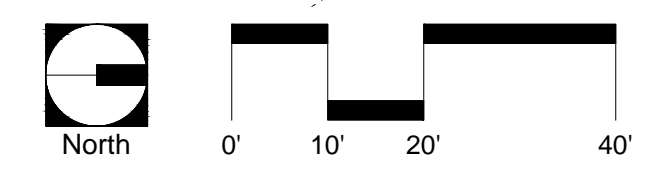
MATCHLINE - SHEET 04
MATCHLINE - SHEET 05

MATCHLINE - SHEET 03
MATCHLINE - SHEET 04

MATCHLINE - SHEET 04
MATCHLINE - SHEET 05

MATCHLINE - SHEET 04
MATCHLINE - SHEET 09

MATCHLINE - SHEET 04
MATCHLINE - SHEET 09



**BERMELLO AJAMIL
& PARTNERS • INC**

Architecture • Engineering • Planning
Interior Design • Landscape Architecture
2601 South Bayshore Drive
Suite 1000
Miami, Florida 33133
(305) 859-2050
Fax (305) 860-3700

PREPARED FOR/OWNER:
CITY OF KEY WEST, FL
P. O. BOX 1409
3140 FLAGLER AVENUE
KEY WEST, FL 33041

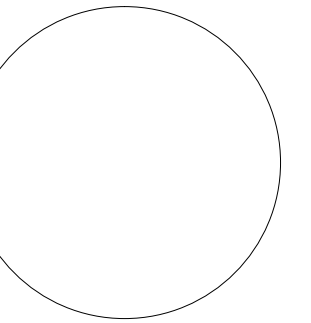


PROJECT NAME:
**TRUMAN
WATERFRONT
PARK**

PROJECT LOCATION/ADDRESS:
TRUMAN WATERFRONT PARK
WEST OF FORT STREET AND THE
TRUMAN ANNEX DEVELOPMENT,
NORTH OF KEY WEST NAVAL BASE

SUB-CONSULTANT INFORMATION:

PROFESSIONAL SEAL:



KIRK J. OLNEY
FLORIDA REGISTERED LANDSCAPE
LA0001705

SUBMITTAL DESCRIPTION / MILESTONE:

**DEVELOPMENT
APPLICATION
March 3, 2014**

REVISIONS:

DRAWING SHEET INFORMATION

BA PROJECT NO.: 12010
SCALE: 1" = 20'-0"
DATE: February 12, 2014
DRAWN BY: KJO
CHECKED BY: RPH
CADD FILE: X:\Truman Waterfront Base.dwg

DRAWING TITLE:
**LANDSCAPE
PLAN**

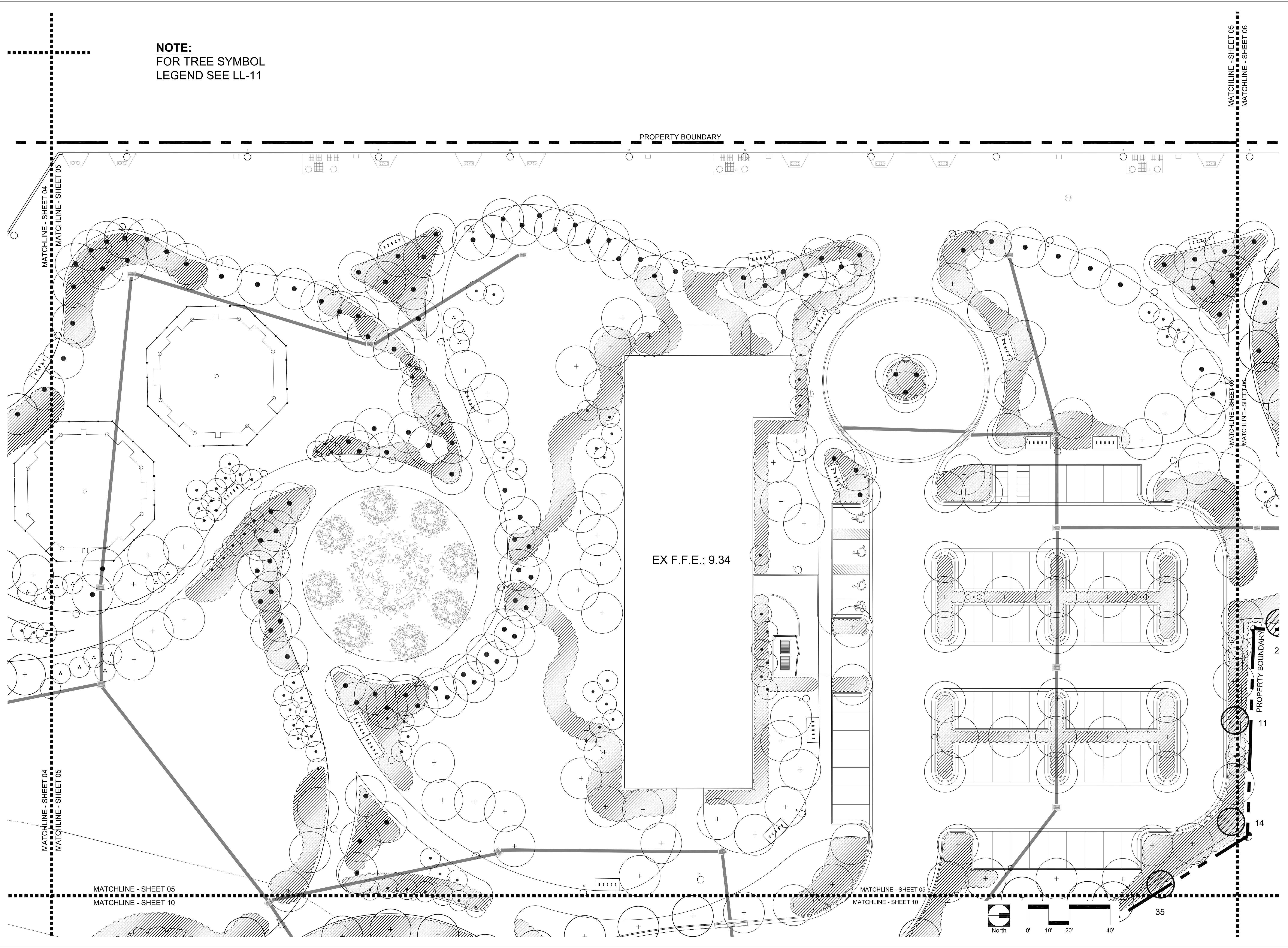
SHEET NO.

LL-04

NOTE:
FOR TREE SYMBOL
LEGEND SEE LL-11

PROPERTY BOUNDARY

EX F.F.E.: 9.34



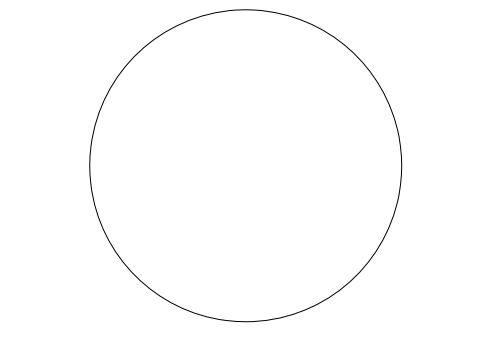
PREPARED FOR/OWNER:
CITY OF KEY WEST, FL
P. O. BOX 1409
3140 FLAGLER AVENUE
KEY WEST, FL 33041



PROJECT NAME:
TRUMAN WATERFRONT PARK
PROJECT LOCATION/ADDRESS:
**TRUMAN WATERFRONT PARK
WEST OF FORT STREET AND THE
TRUMAN ANNEX DEVELOPMENT,
NORTH OF KEY WEST NAVAL BASE**

SUB-CONSULTANT INFORMATION:

PROFESSIONAL SEAL:



KIRK J. OLNEY
FLORIDA REGISTERED LANDSCAPE
LA0001705
SUBMITTAL DESCRIPTION / MILESTONE:

**DEVELOPMENT
APPLICATION
March 3, 2014**

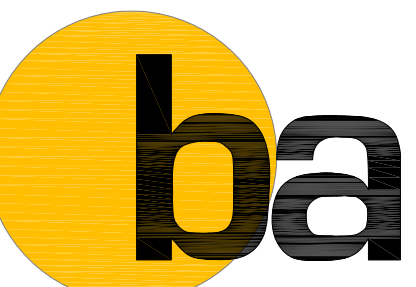
REVISIONS:

DRAWING SHEET INFORMATION
BA PROJECT NO.: 12010
SCALE: 1" = 20'-0"
DATE: February 12, 2014
DRAWN BY: KJO
CHECKED BY: RPH
CADD FILE: X:\Truman Waterfront Base.dwg

DRAWING TITLE:
**LANDSCAPE
PLAN**

SHEET NO.

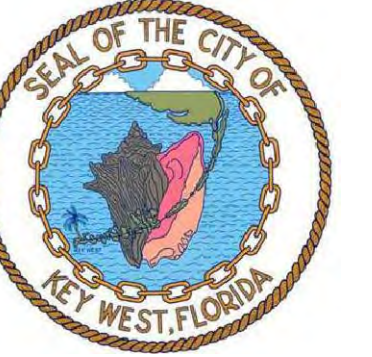
LL-05



**BERMELLO AJAMIL
& PARTNERS INC**

Architecture • Engineering • Planning
Interior Design • Landscape Architecture
2601 South Bayshore Drive
Suite 1000
Miami, Florida 33133
(305) 859-2050
Fax (305) 860-3700

PREPARED FOR OWNER:
CITY OF KEY WEST, FL
P. O. BOX 1409
3140 FLAGLER AVENUE
KEY WEST, FL 33041



PROJECT NAME:

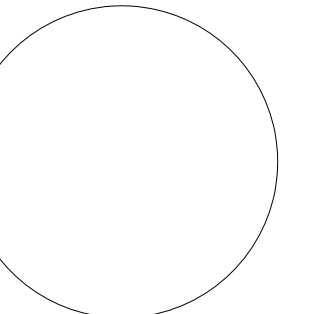
**TRUMAN
WATERFRONT
PARK**

PROJECT LOCATION/ADDRESS:

**TRUMAN WATERFRONT PARK
WEST OF FORT STREET AND THE
TRUMAN ANNEX DEVELOPMENT,
NORTH OF KEY WEST NAVAL BASE**

SUB-CONSULTANT INFORMATION:

PROFESSIONAL SEAL:



KIRK J. OLNEY
FLORIDA REGISTERED LANDSCAPE
LA0001705

SUBMITTAL DESCRIPTION / MILESTONE:

**DEVELOPMENT
APPLICATION
March 3, 2014**

REVISIONS:

DRAWING SHEET INFORMATION

BA PROJECT NO.: 12010
SCALE: 1" = 20'-0"
DATE: February 12, 2014
DRAWN BY: KJO
CHECKED BY: RPH
CADD FILE: X:\Truman Waterfront Base.dwg

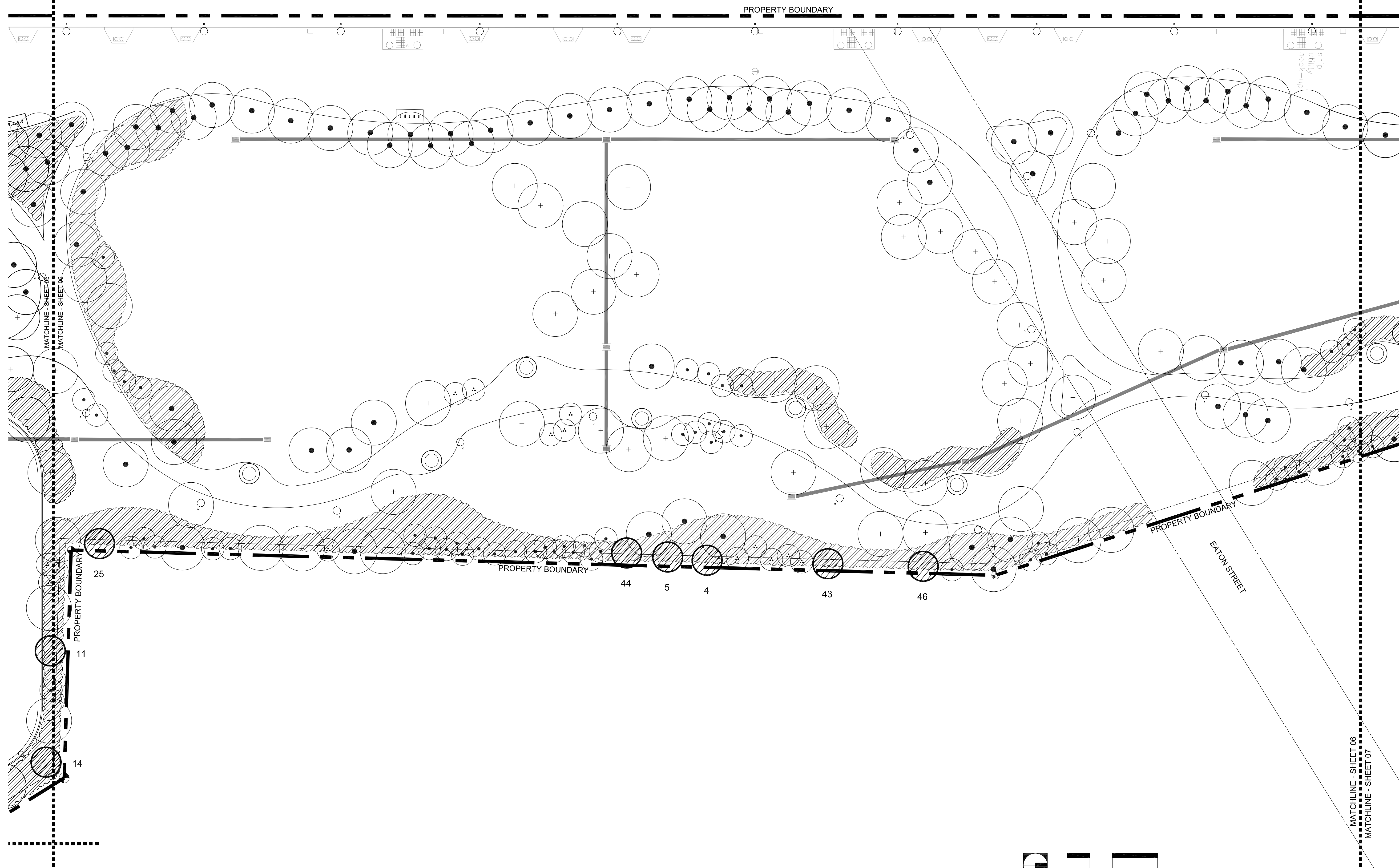
DRAWING TITLE:

**LANDSCAPE
PLAN**

SHEET NO.

LL-06

NOTE:
FOR TREE SYMBOL
LEGEND SEE LL-11





**BERMELLO AJAMIL
& PARTNERS INC.**

Architecture • Engineering • Planning
Interior Design • Landscape Architecture
2601 South Bayshore Drive
Suite 1000
Miami, Florida 33133
(305) 859-2050
Fax (305) 860-3700

PREPARED FOR/OWNER:
**CITY OF KEY WEST, FL
P. O. BOX 1409
3140 FLAGLER AVENUE
KEY WEST, FL 33041**



PROJECT NAME:

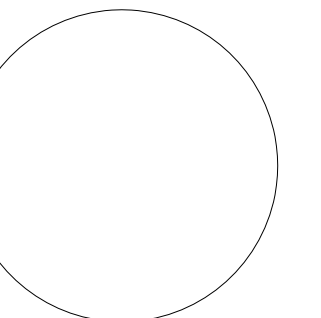
**TRUMAN
WATERFRONT
PARK**

PROJECT LOCATION/ADDRESS:

**TRUMAN WATERFRONT PARK
WEST OF FORT STREET AND THE
TRUMAN ANNEX DEVELOPMENT,
NORTH OF KEY WEST NAVAL BASE**

SUB-CONSULTANT INFORMATION:

PROFESSIONAL SEAL:



**KIRK J. OLNEY
FLORIDA REGISTERED LANDSCAPE
LA0001705**

SUBMITTAL DESCRIPTION / MILESTONE:

**DEVELOPMENT
APPLICATION
March 3, 2014**

REVISIONS:

DRAWING SHEET INFORMATION

BA PROJECT NO.: 12010
SCALE: 1" = 20'-0"
DATE: February 12, 2014
DRAWN BY: KJO
CHECKED BY: RPH
CADD FILE: X:\Truman Waterfront Base.dwg

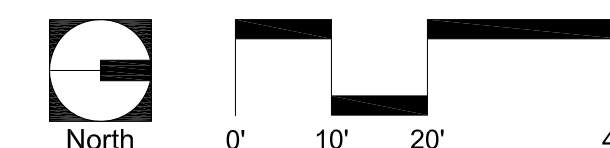
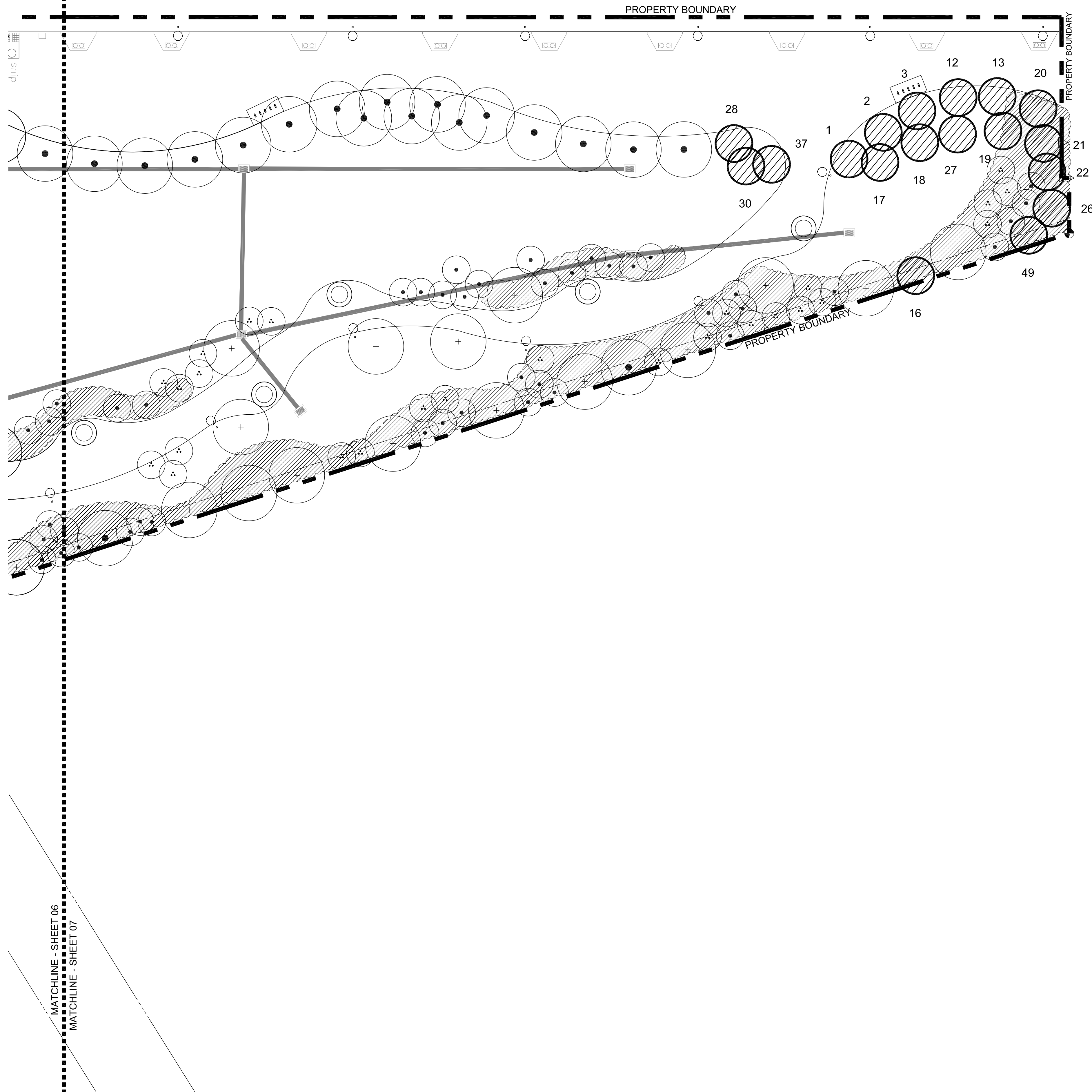
DRAWING TITLE:

**LANDSCAPE
PLAN**

SHEET NO.

LL-07

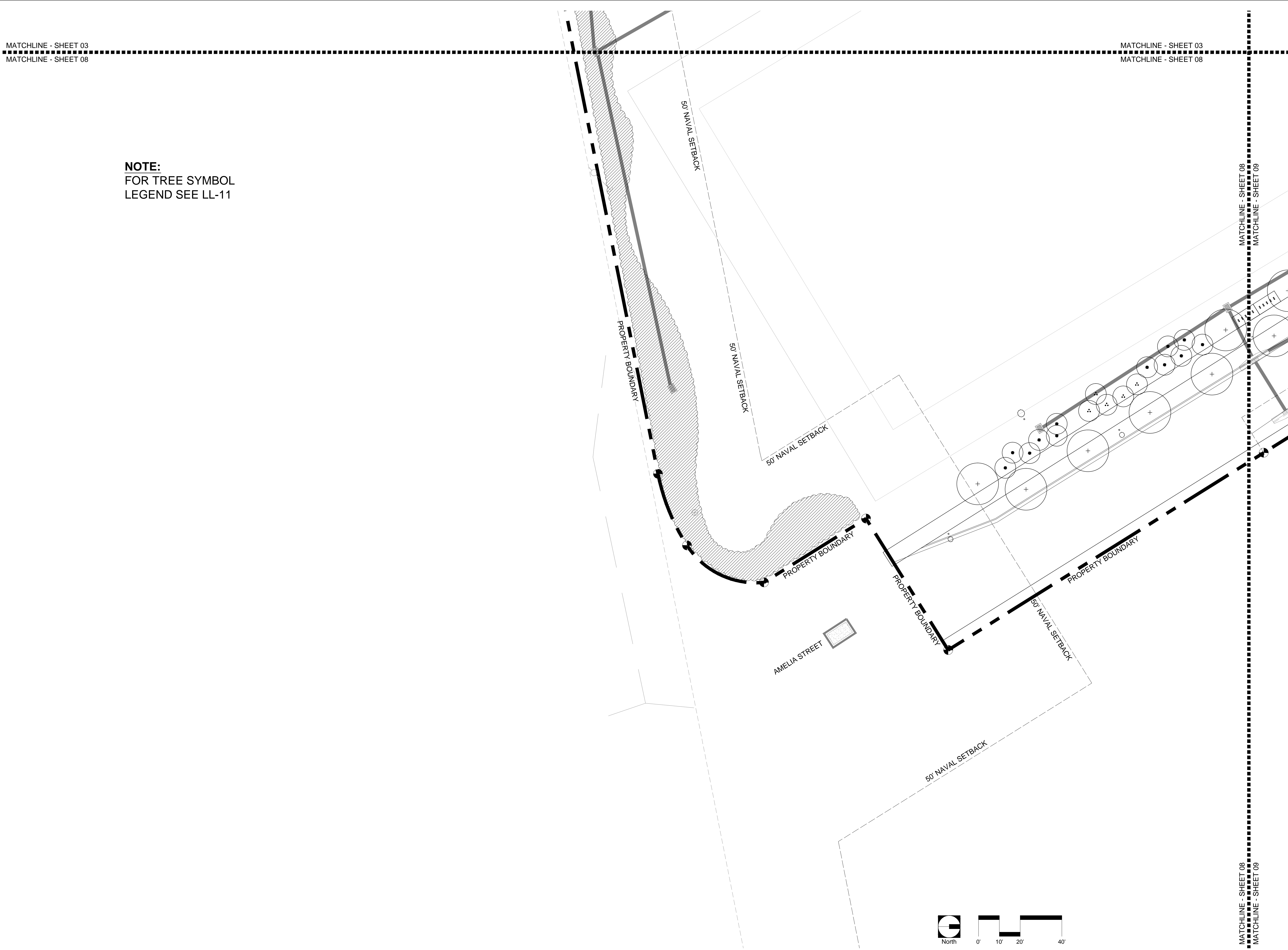
**NOTE:
FOR TREE SYMBOL
LEGEND SEE LL-11**



MATCHLINE - SHEET 03
MATCHLINE - SHEET 08

MATCHLINE - SHEET 03
MATCHLINE - SHEET 08

NOTE:
FOR TREE SYMBOL
LEGEND SEE LL-11



**BERMELLO AJAMIL
& PARTNERS • INC**

Architecture • Engineering • Planning
Interior Design • Landscape Architecture
2601 South Bayshore Drive
Suite 1000
Miami, Florida 33133
(305) 859-2050
Fax (305) 860-3700

PREPARED FOR/OWNER:
CITY OF KEY WEST, FL
P. O. BOX 1409
3140 FLAGLER AVENUE
KEY WEST, FL 33041

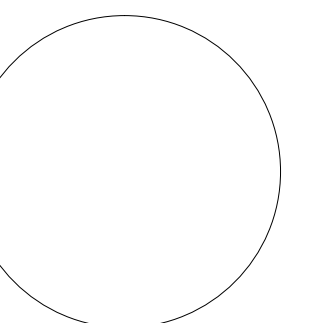


PROJECT NAME:
**TRUMAN
WATERFRONT
PARK**

PROJECT LOCATION/ADDRESS:
TRUMAN WATERFRONT PARK
WEST OF FORT STREET AND THE
TRUMAN ANNEX DEVELOPMENT,
NORTH OF KEY WEST NAVAL BASE

SUB-CONSULTANT INFORMATION:

PROFESSIONAL SEAL:



KIRK J. OLNEY
FLORIDA REGISTERED LANDSCAPE
LA0001705

SUBMITTAL DESCRIPTION / MILESTONE:

**DEVELOPMENT
APPLICATION
March 3, 2014**

REVISIONS:

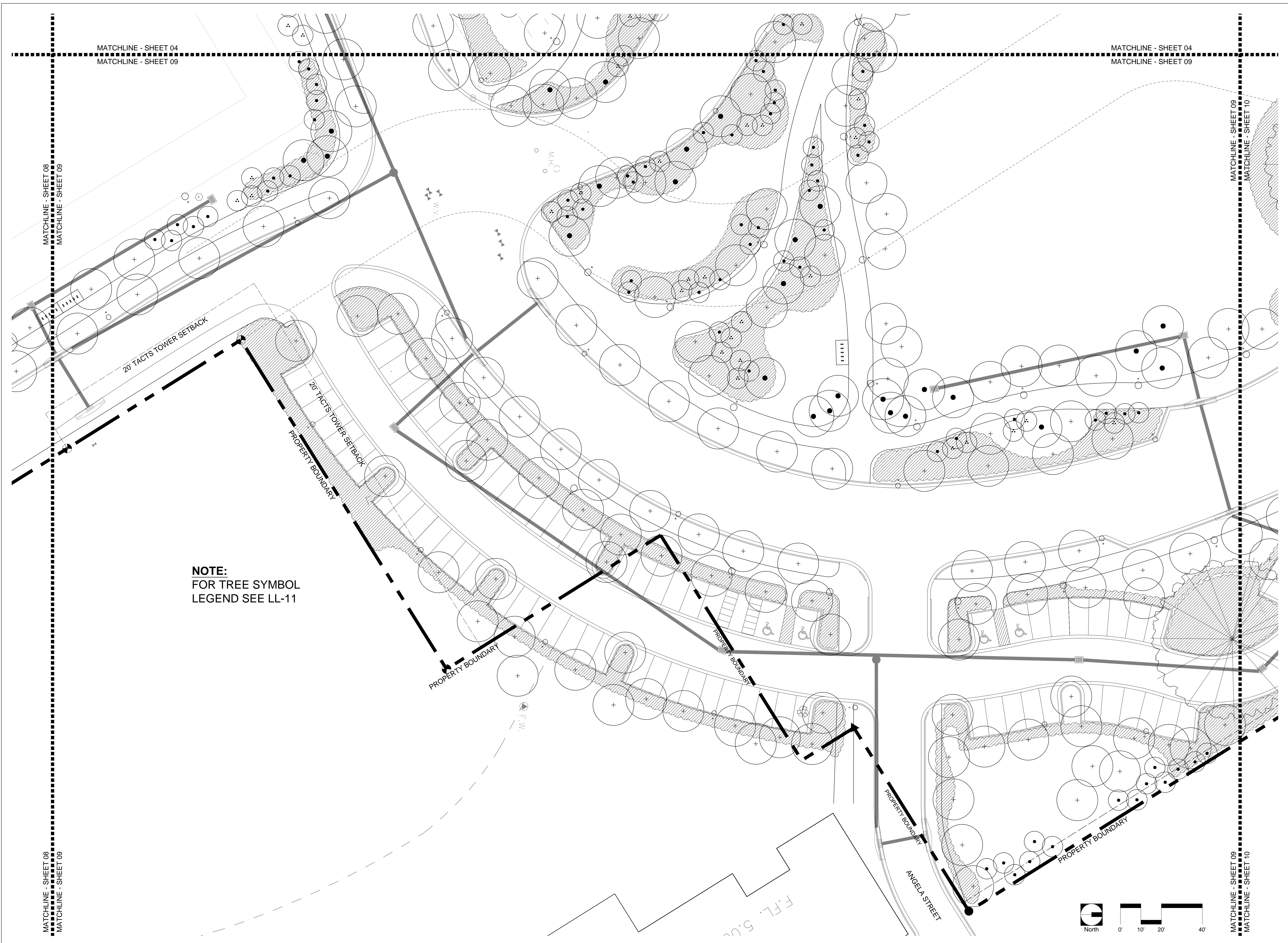
DRAWING SHEET INFORMATION

BA PROJECT NO.: 12010
SCALE: 1" = 20'-0"
DATE: February 12, 2014
DRAWN BY: KJO
CHECKED BY: RPH
CADD FILE: X:\Truman Waterfront Base.dwg

DRAWING TITLE:
**LANDSCAPE
PLAN**

SHEET NO.

LL-08



NOTE:
FOR TREE SYMBOL
LEGEND SEE LL-11



**BERMELLO AJAMIL
& PARTNERS • INC**
Architecture • Engineering • Planning
Interior Design • Landscape Architecture
2601 South Bayshore Drive
Suite 1000
Miami, Florida 33133
(305) 859-2050
Fax (305) 860-3700

PREPARED FOR/OWNER:
CITY OF KEY WEST, FL
P. O. BOX 1409
3140 FLAGLER AVENUE
KEY WEST, FL 33041

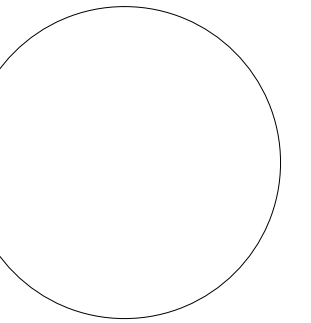


PROJECT NAME:
**TRUMAN
WATERFRONT
PARK**

PROJECT LOCATION/ADDRESS:
**TRUMAN WATERFRONT PARK
WEST OF FORT STREET AND THE
TRUMAN ANNEX DEVELOPMENT,
NORTH OF KEY WEST NAVAL BASE**

SUB-CONSULTANT INFORMATION:

PROFESSIONAL SEAL:



KIRK J. OLNEY
FLORIDA REGISTERED LANDSCAPE
LA0001705

SUBMITTAL DESCRIPTION / MILESTONE:

**DEVELOPMENT
APPLICATION
March 3, 2014**

REVISIONS:

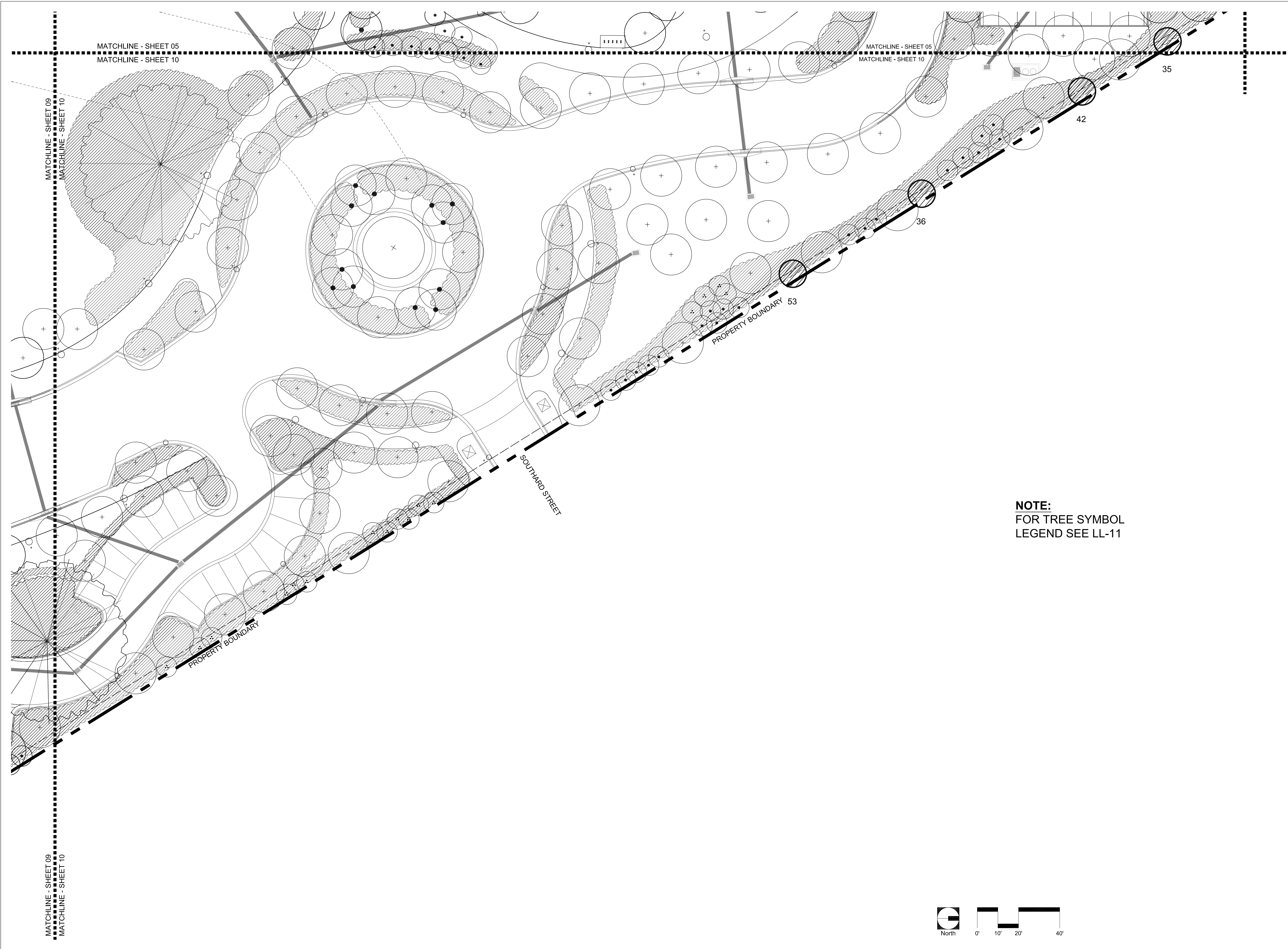
DRAWING SHEET INFORMATION

BA PROJECT NO.: 12010
SCALE: 1" = 20'-0"
DATE: February 12, 2014
DRAWN BY: KJO
CHECKED BY: RPH
CADD FILE: X:\Truman Waterfront Base.dwg

DRAWING TITLE:
**LANDSCAPE
PLAN**

SHEET NO.

LL-09



BERMELLO AJAMIL & PARTNERS, INC.

Architecture • Engineering • Planning
Interior Design • Landscape Architecture
2601 South Bayshore Drive
Suite 1000
Miami, Florida 33133
(305) 859-2050
Fax (305) 860-3700

PREPARED FOR/OWNER:
CITY OF KEY WEST, FL
P. O. BOX 1409
3140 FLAGLER AVENUE
KEY WEST, FL 33041

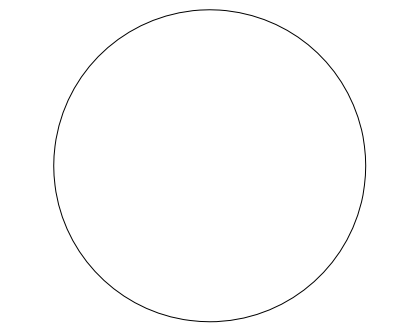


PROJECT NAME:
TRUMAN WATERFRONT PARK

PROJECT LOCATION/ADDRESS:
**TRUMAN WATERFRONT PARK
WEST OF FORT STREET AND THE
TRUMAN ANNEX DEVELOPMENT,
NORTH OF KEY WEST NAVAL BASE**

SUB-CONSULTANT INFORMATION:

PROFESSIONAL SEAL:



KIRK J. OLNEY
FLORIDA REGISTERED LANDSCAPE
LA0001705

SUBMITTAL DESCRIPTION / MILESTONE:

DEVELOPMENT APPLICATION
March 3, 2014

REVISIONS:

DRAWING SHEET INFORMATION

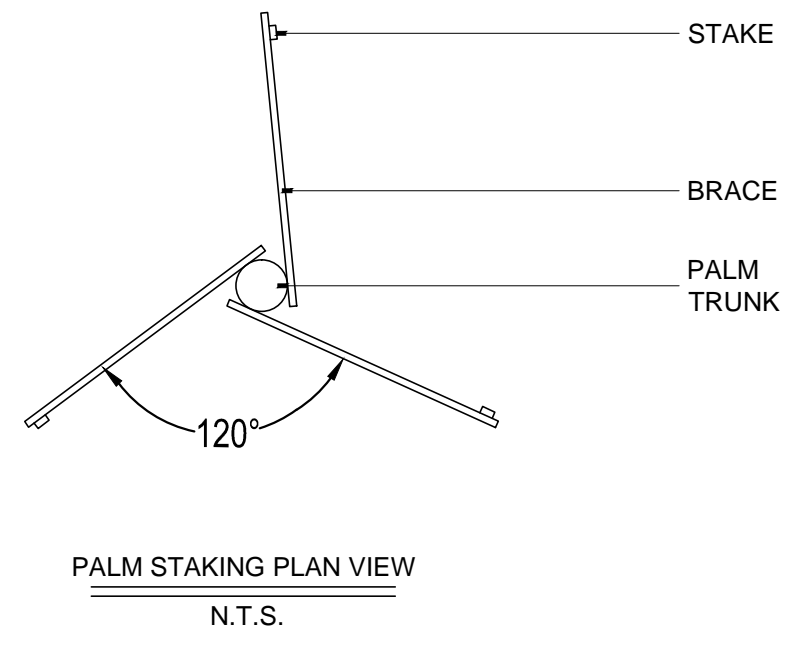
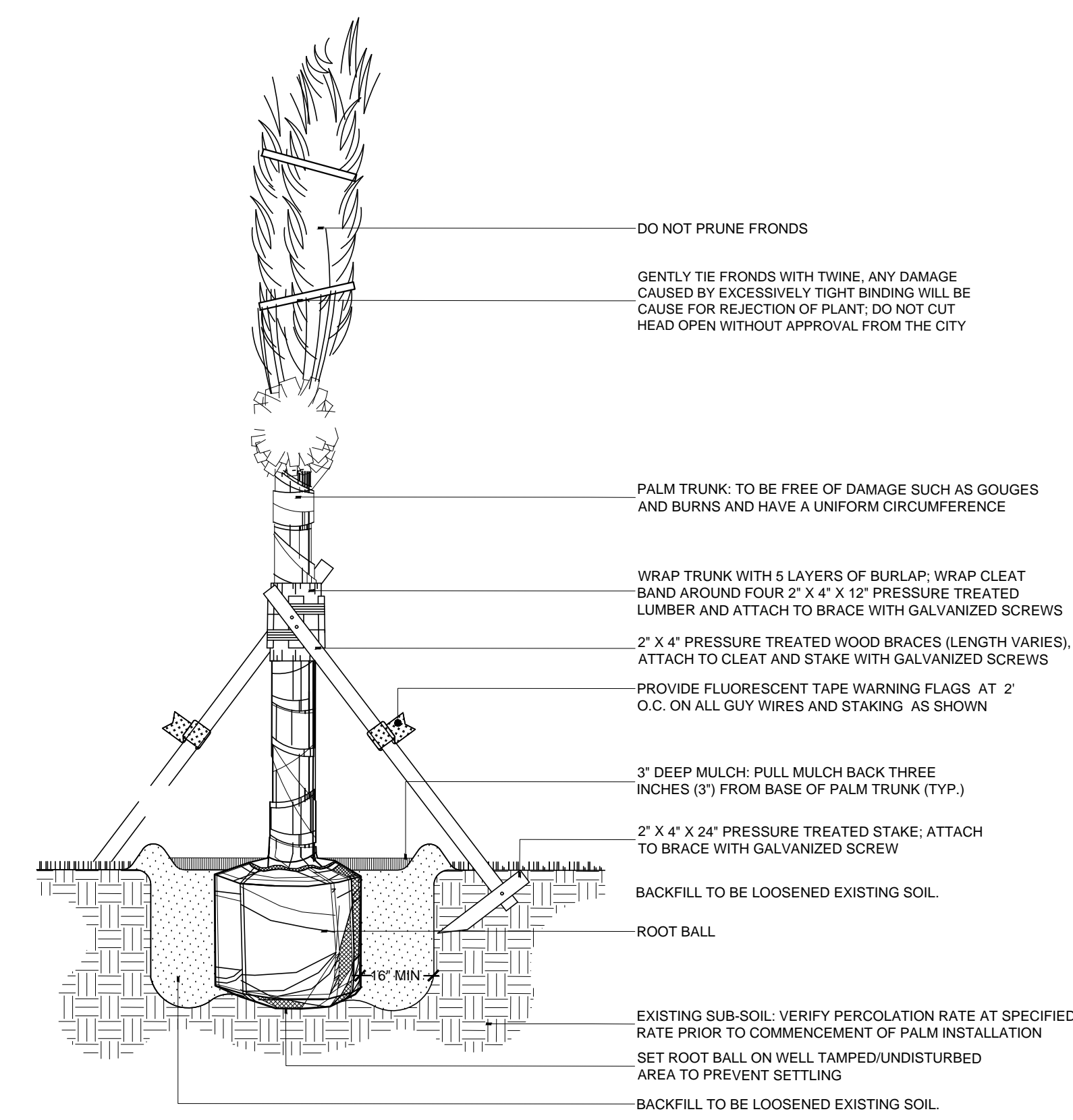
BA PROJECT NO.: 12010
SCALE: AS NOTED
DATE: February 12, 2014
DRAWN BY: KJO
CHECKED BY: RPH
CADD FILE: X:\Truman Waterfront Base.dwg

DRAWING TITLE:
LANDSCAPE PLAN

SHEET NO.

LL-10

Tree Symbols										
Canopy Trees										
BOTANICAL NAME	COMMON NAME	NATIVE	PLANT INSTALLATION SPECIFICATION	SPACING	AERIAL TOLERANCE	SOIL SALT TOLERANCE	DROUGHT TOLERANCE	WIND TOLERANCE	MATURE SIZE	
	Bursera simaruba	Gumbo Limbo	12' X 5'; 3" cal. 6' clear trunk	As Shown	High	Moderate	High	High	40' tall X 40' wide	
	Cordia alliodora	Rich Apple	12' X 5'; 3" cal. 6' clear trunk	As Shown	High	High	High	High	30' tall X 25' wide	
	Coccoloba uvifera	Sea Grape	12' X 5'; 3" cal. 6' clear trunk	As Shown	High	Moderate	High	Moderate	30' tall X 30' wide	
	Conocarpus erectus	Green Buttonwood	12' X 5'; 3" cal. 6' clear trunk	As Shown	High	High	High	Moderate	40' tall X 30' wide	
	Simarouba glauca	Paradise Tree	12' X 5'; 3" cal. 6' clear trunk	As Shown	High	Moderate	Moderate	Moderate	50' tall X 30' wide	
	Sweetenia mahogany	Mahogany Tree	12' X 5'; 3" cal. 6' clear trunk	As Shown	High	Moderate	High	Moderate	50' tall X 50' wide	
Ornamental Trees										
BOTANICAL NAME	COMMON NAME	NATIVE	PLANT INSTALLATION SPECIFICATION	SPACING	AERIAL TOLERANCE	SOIL SALT TOLERANCE	DROUGHT TOLERANCE	WIND TOLERANCE	MATURE SIZE	
	Cordia sebestena	Orange Geiger	12' X 4'; 2 1/2" cal. 5' Clear Trunk	As Shown	High	High	High	Moderate	30' tall X 25' wide	
	Plumeria obtusa	White Plumeria	7'-8' X 4'-5'; 2 1/2" cal	As Shown	High	Moderate	Moderate	Moderate	30' tall X 30' wide	
	Krugiodendron ferreum	Black Ironwood	12' X 5'; 3" cal. 5' clear trunk	As Shown	High	Unknown	High	High	30' tall X 30' wide	
Large Palms										
BOTANICAL NAME	COMMON NAME	NATIVE	PLANT INSTALLATION SPECIFICATION	SPACING	AERIAL TOLERANCE	SOIL SALT TOLERANCE	DROUGHT TOLERANCE	WIND TOLERANCE	MATURE SIZE	
	Bismarckia nobilis 'Silver'	Silver Bismarck Palm	35' overall height; full head	As Shown	Moderate	Moderate	High	Moderate	60' tall X 25' wide	
	Cocos nucifera 'Mayport'	Mayport Coconut	15' overall height; full head	As Shown	High	High	High	High	50' tall X 25' wide	
	Cocos nucifera 'Mayport'	Mayport Coconut	22' overall height; curved trunk; full head	As Shown	High	High	High	High	60' tall X 25' wide	
	Phoenix dactylofera 'Medjool'	Medjool Date	30' overall height; full head	As Shown	High	Moderately High	High	Moderate	70' tall X 30' wide	
Small Palms										
BOTANICAL NAME	COMMON NAME	NATIVE	PLANT INSTALLATION SPECIFICATION	SPACING	AERIAL TOLERANCE	SOIL SALT TOLERANCE	DROUGHT TOLERANCE	WIND TOLERANCE	MATURE SIZE	
	Coccothrinax alta	Silver Palm	4' overall height; full head	As Shown	High	High	High	Moderate	25' tall X 8' wide	
	Dichosperma album	Hurricane Palm	14' overall height; full head	As Shown	High	High	High	High	30' tall X 20' wide	
	Litsea latifolia	Silver Latan Palm	9' overall height; full head	As Shown	Moderate	Unknown	High	Moderate	30' tall X 20' wide	
	Pritchardia pacifica	Fig Fan Palm	16' overall height; full head	As Shown	High	High	Moderate	Moderate	25' tall X 20' wide	
	Pritchardia thurstonii	Thurston Palm	10' overall height; full head	As Shown	High	High	Moderate	Moderate	25' tall X 20' wide	
	Sabal palmetto	Cabbage Palm	12' overall height; no boots	As Shown	High	High	High	High	50' tall X 10' wide	
	Thrinax radata	Florida Thatch Palm	9' overall height; full head	As Shown	High	High	High	High	30' tall X 9' wide	
Shrubs and Groundcover										
BOTANICAL NAME	COMMON NAME	NATIVE	PLANT INSTALLATION SPECIFICATION	SPACING	AERIAL TOLERANCE	SOIL SALT TOLERANCE	DROUGHT TOLERANCE	WIND TOLERANCE	MATURE SIZE	
	Acalypha wilkesiana	Copperleaf	7 gal.; 36" X 36"; full to ground	36" on center triangular spacing	Moderate	Moderate	Moderate	Moderate	20' tall X 20' wide	
	Brunfelsia pauciflora	Yesterday-Today-Tomorrow	9 gal.; 30" X 24"; full to ground	30" on center triangular spacing	Moderate	Moderate	Moderate	Moderate	20' tall X 20' wide	
	Carissa macrocarpa	Dwarf Natal Plum	1 gal.; 12" X 12"; full to ground	18" on center triangular spacing	High	High	Moderate	Moderate	2' tall X 8' wide	
	Chrysothamnus scarco	Green Cocoplum	3 gal.; 24" X 18"; full to ground	24" on center triangular spacing	High	High	High	High	20' tall X 20' wide	
	Codiaeum variegatum	Croton	3 gal.; 24" X 18"; full to ground	24" on center triangular spacing	Unknown	Unknown	High	Moderate	8' tall X 8' wide	
	Erythrina herbacea	Coral Bean	3 gal.; 24" X 18"; full to ground	24" on center triangular spacing	Moderate	Moderate	High	High	10' tall X 12' wide	
	Forsythia segregata	Florida Privet	3 gal.; 24" X 18"; full to ground	24" on center triangular spacing	Moderate	Moderate	High	High	15' tall X 10' wide	
	Leucophyllum frutescens	Texas sage	7 gal.; 36" X 36"; full to ground	36" on center triangular spacing	Moderate	Moderate	High	Moderate	15' tall X 15' wide	
	Licania michauxii	Gopher Apple	1 gal.; 12" X 12"; full to ground	18" on center triangular spacing	High	High	High	High	2' tall X 6' wide	
	Randia aculeata	Wild Indigo Berry	5 gal.; 30" X 24"; full to ground	30" on center triangular spacing	Moderate	Moderate	High	High	10' tall X 8' wide	
	Scaevola plumieri	Inkberry	5 gal.; 30" X 24"; full to ground	30" on center triangular spacing	High	High	High	Moderate	5' tall X 10' wide	
	Chrysothamnus scarco	Red Tip Cocoplum	3 gal.; 24" X 18"; full to ground	24" on center triangular spacing	High	High	High	Moderate	20' tall X 20' wide	
	Tripsacum dactyloides	Fakahatchee Grass	1 gal.; 12" X 12"; full to ground	18" on center triangular spacing	High	High	High	High	2' tall X 6' wide	
	Sophora tomentosa	Necklace Pod	7 gal.; 36" X 36"; full to ground	36" on center triangular spacing	High	High	High	Moderate	20' tall X 20' wide	
Turf Grass										
BOTANICAL NAME	COMMON NAME	NATIVE	PLANT INSTALLATION SPECIFICATION	SPACING	AERIAL TOLERANCE	SOIL SALT TOLERANCE	DROUGHT TOLERANCE	WIND TOLERANCE	MATURE SIZE	
	Paspalum 'Aloha Seashore'	Aloha Seashore Bahia Grass	No	solid sod	High	High	High	High	8" to 12" tall	
Trees to be Relocated Onsite										
QUANTITY	BOTANICAL NAME	COMMON NAME	COMMENTS							
17	Cocos nucifera	Coconut Palm	See Tree Disposition Table for Relocated Tree or Palm Specifications.							
9	Bursera simaruba	Gumbo Limbo								
1	Hyophorbe lagenicarpa	Bottle Palm								
3	Sweetenia mahogany	Mahogany Tree								
2	Ficus indica	Laurel Ficus								
1	Sabal palmetto	Cabbage Palm								
7	Washingtonia robusta	Washington Palm								
1	Unknown	Unknown								



- PALM INSTALLATION NOTES:**
- ALL PLANTING AREAS AND PLANTING PITS SHALL BE TESTED FOR SUFFICIENT PERCOLATION (AT A RATE OF 1" OF STANDING WATER IN 10 MINUTES) PRIOR TO INSTALLATION OF PLANT MATERIAL TO ENSURE SUFFICIENT DRAINAGE.
 - PLANT BEDS IN PARKING LOTS AND IN AREAS COMPACTED BY EQUIPMENT AND MACHINERY SHALL BE LOOSENEED SO THAT THE SPECIFIED DRAINAGE/PERCOLATION RATE IS ACHIEVED.
 - ALL SYNTHETIC BURLAP, STRING, CORDS OR WIRE BASKETS SHALL BE REMOVED BEFORE TREES ARE PLANTED, WITHOUT BREAKING THE SOIL BALL. ALL SYNTHETIC TAPE SHALL BE REMOVED FROM BRANCHES AND TRUNKS PRIOR TO FINAL ACCEPTANCE. THE TOP 1/3 OF NATURAL BURLAP SHALL BE REMOVED, AFTER THE TREE IS SET IN THE PLANTING HOLE AND BEFORE THE TREES ARE BACKFILLED.
 - TOP OF TREE ROOTBALL SHALL BE 2" ABOVE FINISHED GRADE.

1 PLANT MATERIAL LIST
SCALE: N/A

- CONTRACTOR SHALL GUARANTEE THAT ALL PLANT MATERIAL WILL SURVIVE FOR A PERIOD OF ONE YEAR FROM THE DATE OF FINAL ACCEPTANCE.
- CONTRACTOR IS RESPONSIBLE FOR THE MAINTENANCE AND WATERING OF PLANT MATERIAL UNTIL FINAL ACCEPTANCE.
- IF NECESSARY FOR PLANT VIGOR, THE CONTRACTOR SHALL PROVIDE TEMPORARY IRRIGATION.
- LOCATION OF ALL UTILITIES AND BASE INFORMATION IS APPROXIMATE. CONTRACTOR SHALL VERIFY ALL UNDERGROUND UTILITIES AND OBSTRUCTIONS AND COORDINATE WITH THE CITY PRIOR TO INITIATING INSTALLATION WORK. CONTRACTOR SHALL BE SOLELY RESPONSIBLE TO REPAIR OR REPLACE ANY DAMAGE COMMITTED TO EXISTING ELEMENTS ABOVE OR BELOW GROUND TO ITS ORIGINAL CONDITION AND TO THE SATISFACTION OF THE CITY.
- CONTRACTOR SHALL FIELD ADJUST LOCATION OF PLANT MATERIAL AS NECESSARY TO AVOID DAMAGE TO EXISTING UNDERGROUND UTILITIES AND/OR EXISTING ABOVE GROUND ELEMENTS. ALL CHANGES REQUIRED SHALL BE COORDINATED WITH THE CITY.
- CONTRACTOR SHALL FIELD STAKE THE LOCATION OF ALL PLANT MATERIAL PRIOR TO INITIATING INSTALLATION FOR THE REVIEW AND APPROVAL OF THE CITY.
- CONTRACTOR SHALL SOLELY CLEAN THE WORK AREAS AT THE END OF EACH WORKING DAY. RUBBISH AND DEBRIS SHALL BE COLLECTED AND DISPOSED OF, AS DIRECTED, DAILY. ALL MATERIALS, PRODUCTS, AND EQUIPMENT SHALL BE STORED IN AN ORGANIZED FASHION AS DIRECTED BY THE CITY.
- ALL PLANT MATERIAL SHALL BE IN FULL AND STRICT ACCORDANCE WITH FLORIDA NO. 1 GRADE, ACCORDING TO THE "GRADES AND STANDARDS FOR NURSERY PLANTS" PUBLISHED BY THE FLORIDA DEPARTMENT OF AGRICULTURE AND CONSUMER SERVICES.
- CONTRACTOR AND EMPLOYEE VEHICLE PARKING SHALL BE COORDINATED WITH THE CITY. SHUTTLING OF EMPLOYEES TO THE PROJECT AREA(S) SHALL BE THE RESPONSIBILITY OF THE CONTRACTOR. CONTRACTOR SHALL NOT DISRUPT OR CONFLICT IN ANY WAY WITH RESIDENCE AND/OR TRAFFIC.
- CONSTRUCTION ACCESS SHALL BE INDICATED BY THE CITY. COORDINATION OF HEAVY EQUIPMENT AND MATERIALS SHALL BE THE CONTRACTOR'S RESPONSIBILITY. THE CONTRACTOR SHALL BE RESPONSIBLE FOR SCHEDULING AND COORDINATION OF WORK WITH OTHER TRADES.
- THE CONTRACTOR SHALL TAKE WHATEVER MEANS THAT MAY BE NECESSARY TO FULLY UNDERSTAND ALL THE ACCESS ROUTES, CONSTRUCTION SCHEDULES, AND SECURITY CLEARANCES IN ORDER TO PROVIDE A COMPLETE AND FINISHED PROJECT ON SCHEDULE.
- CONTRACTOR MUST APPROVE ALL FINE GRADED AREAS PRIOR TO THE COMMENCEMENT OF PLANTING. ONCE PLANT MATERIAL IS INSTALLED, IF DRAINAGE PROBLEMS EXIST IT IS THE CONTRACTOR'S RESPONSIBILITY TO REMOVE ALL PLANTS, IF NEEDED, REGRADE AREA AND REPLANT AT NO EXTRA COST TO THE CITY.
- ALL CONTAINER SIZES NOTED ARE MINIMUM. INCREASE SIZE IF NECESSARY TO PROVIDE PLANT HEIGHT AND WIDTH SIZE AND SPECIFICATIONS. ALL HEIGHT AND SPREAD SPECIFICATIONS ARE MINIMUM.
- SHRUB AND GROUND COVER SPACING IS INDICATED ON THE PLANT PALETTE, UNDER 'SPACING', FOR ALL PLANTS AND SHALL APPLY FOR ALL "MASS PLANTINGS." TREES "AS SHOWN" ON LANDSCAPE PLANTING PLANS WHEN INDIVIDUAL PLANTS ARE DELINEATED.
- PALM HEIGHTS AS INDICATED ON THE PLANS REFER TO "CLEAR TRUNK" HEIGHTS, UNLESS OTHERWISE NOTED AS "OA" (OVERALL HEIGHT), OR "GW" (GRAY WOOD). (DATE PALM CLEAR TRUNK SIZE DOES NOT INCLUDE THE NUT.)
- CONTRACTOR SHALL MULCH ALL NEW PLANT MATERIAL THROUGHOUT AND COMPLETELY TO DEPTH SPECIFIED.
- ANY SUBSTITUTIONS IN SIZE AND/OR PLANT MATERIAL MUST BE APPROVED BY THE CITY. ALL PLANTS WILL BE SUBJECT TO APPROVAL BY CITY BEFORE PLANTING CAN BEGIN.
- CONTRACTOR SHALL COORDINATE ALL PLANTING WORK WITH IRRIGATION WORK. CONTRACTOR SHALL BE RESPONSIBLE FOR ALL HAND WATERING TO SUPPLEMENT IRRIGATION WATERING AND RAINFALL. CONTRACTOR SHALL BE RESPONSIBLE FOR HAND WATERING IN ALL PLANTING AREAS, REGARDLESS OF THE STATUS OF EXISTING OR PROPOSED IRRIGATION.
- CONTRACTOR SHALL REPLACE (BY EQUAL SIZE AND QUALITY) ANY AND ALL EXISTING PLANT MATERIAL DISTURBED OR DAMAGED BY PLANT REMOVAL, RELOCATION, AND/OR INSTALLATION WORK.

3 LANDSCAPE NOTES
SCALE: N.T.S.

2 LARGE PALM INSTALLATION DETAIL
SCALE: 3/8" = 1'-0"

PREPARED FOR OWNER:
CITY OF KEY WEST, FL
P. O. BOX 1409
3140 FLAGLER AVENUE
KEY WEST, FL 33041

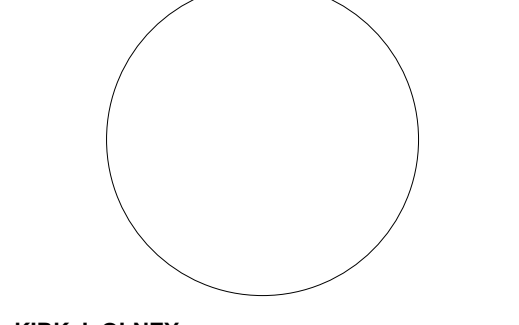


PROJECT NAME:
TRUMAN WATERFRONT PARK

PROJECT LOCATION/ADDRESS:
TRUMAN WATERFRONT PARK
WEST OF FORT STREET AND THE
TRUMAN ANNEX DEVELOPMENT,
NORTH OF KEY WEST NAVAL BASE

SUB-CONSULTANT INFORMATION:

PROFESSIONAL SEAL:



KIRK J. OLNEY
FLORIDA REGISTERED LANDSCAPE
ARCHITECT
LA0001705

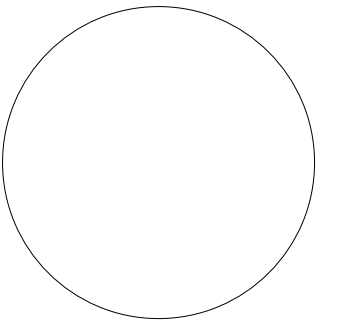
SUBMITTAL DESCRIPTION / MILESTONE:

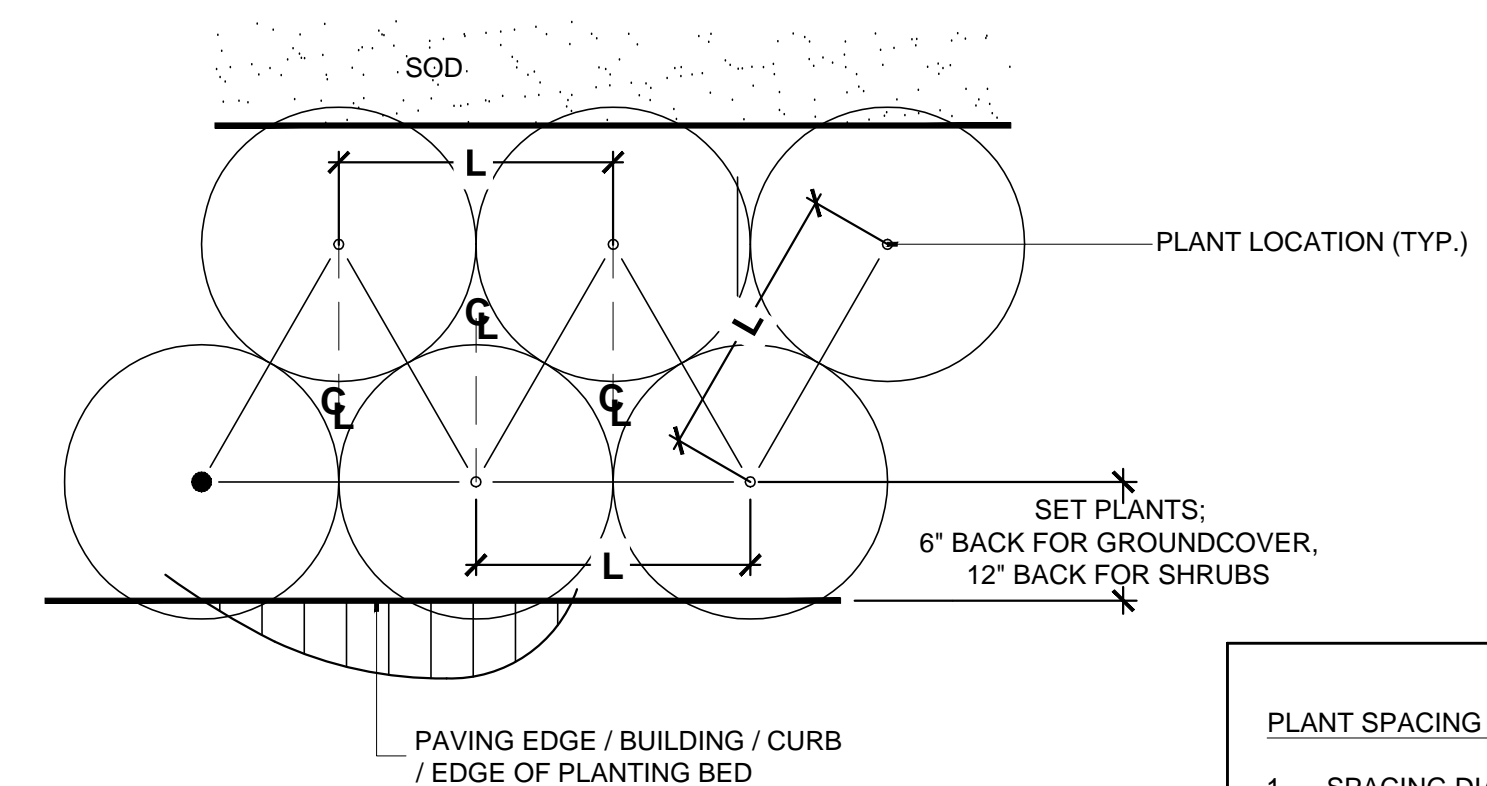
DEVELOPMENT APPLICATION
March 3, 2014

REVISIONS:

DRAWING SHEET INFORMATION
BA PROJECT NO.: 12010
SCALE: AS NOTED
DATE: February 12, 2014
DRAWN BY: KJO
CHECKED BY: RPH
CADD FILE: X:\Truman Waterfront Base.dwg

DRAWING TITLE:
LANDSCAPE NOTES & PLANT MATERIAL LIST
SHEET NO.

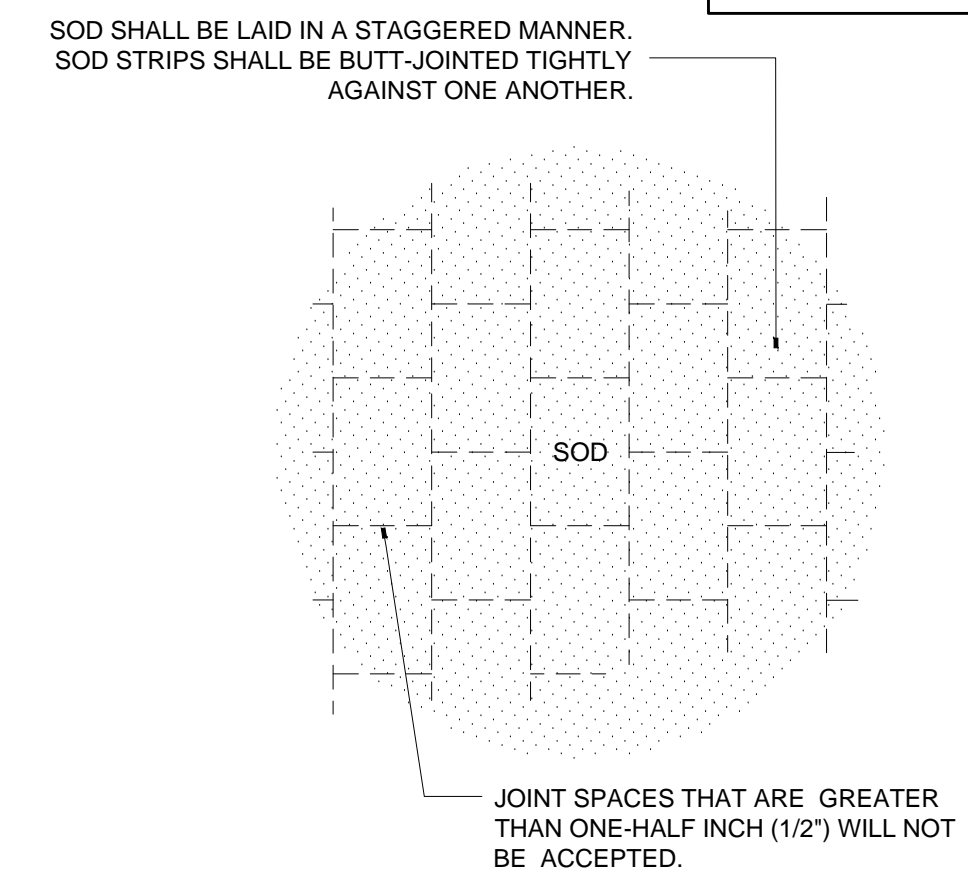




5 SHRUB AND GROUND COVER LAYOUT DETAIL
SCALE: N.T.S

SOD LAYOUT AND INSTALLATION NOTES:

- WHERE SOD IS PROPOSED ADJACENT TO CURB, SIDEWALKS, FURNITURE PADS OR PAVEMENT, FINISH GRADE SHALL BE 3" LOWER PRIOR TO INSTALLATION OF SAID SOD.

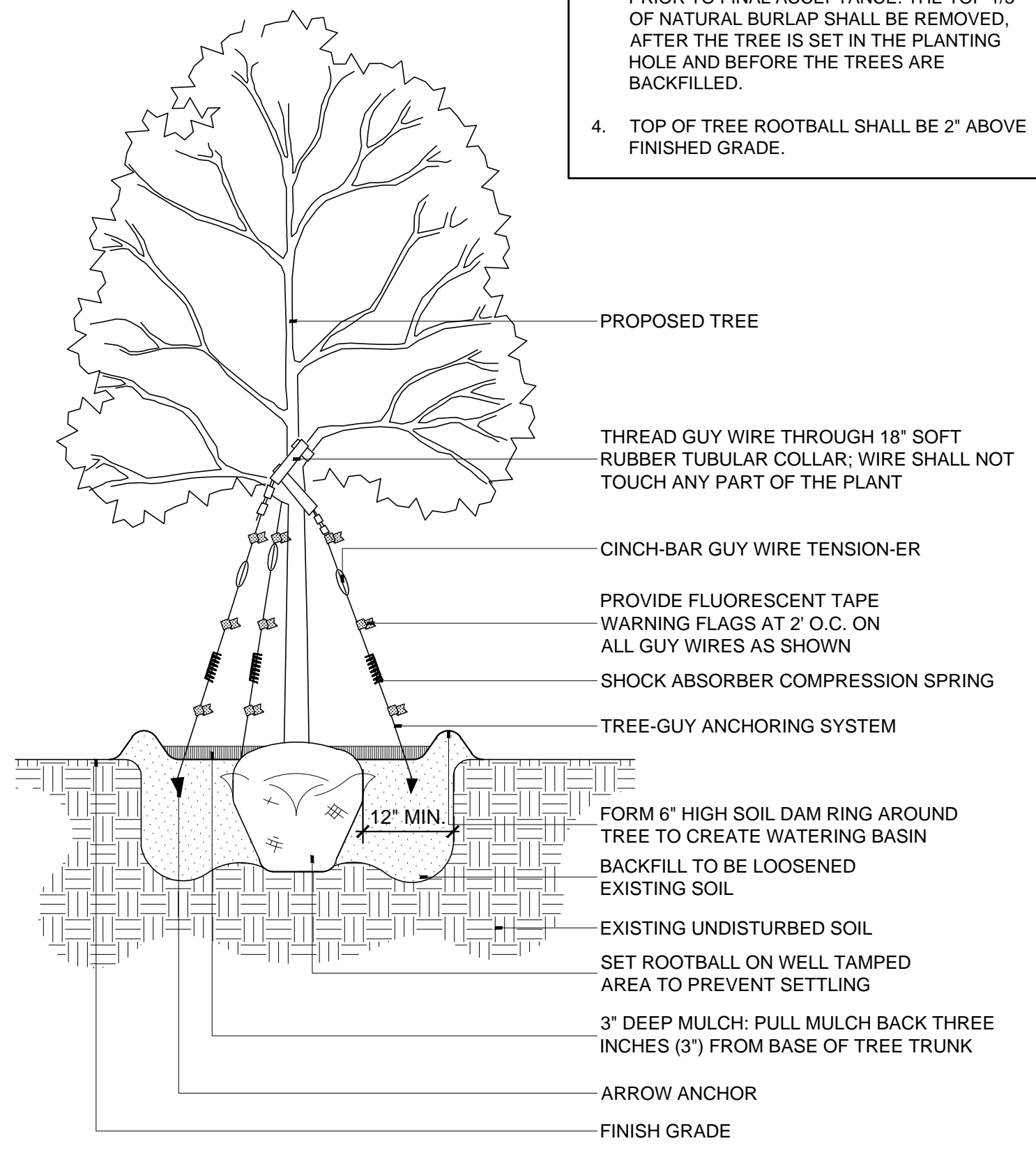


6 SOD LAYOUT AND INSTALLATION DETAIL
SCALE: N.T.S

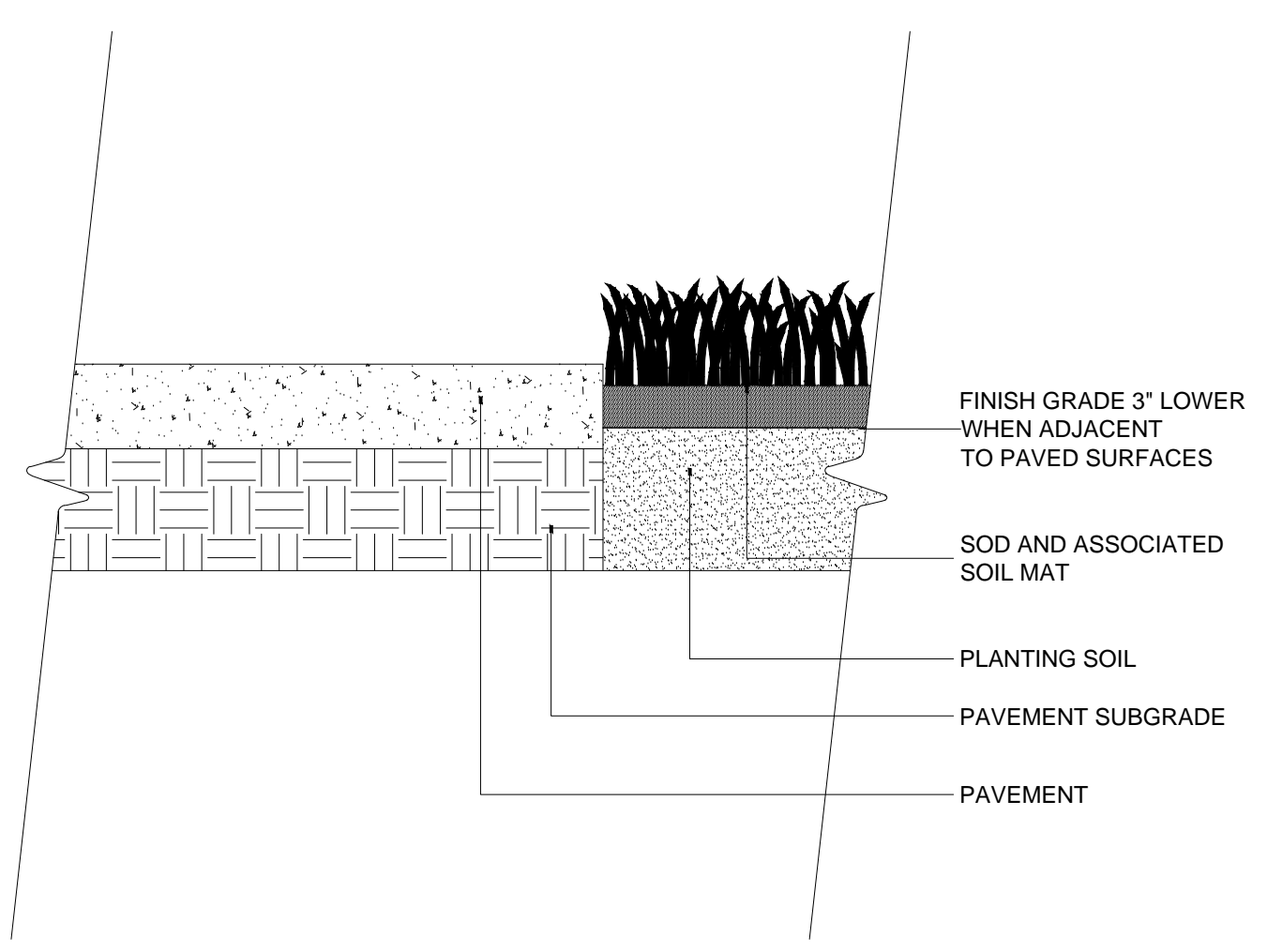
- A 100% FULL COVERAGE SYSTEM SHALL BE PROVIDED FOR ALL PROPOSED LANDSCAPE.
- IRRIGATION SYSTEM SHALL BE DESIGNED TO MAXIMIZE WATER CONSERVATION AND SHALL CONFORM TO CHAPTER 74, ARTICLE 3, SUBDIVISION 2, SECTION 74-295 THROUGH SECTION 74-300 AND CHAPTER 108, ARTICLE VI, DIVISION 4, SECTION 108-515 OF THE CITY OF KEY WEST, FLORIDA CODE OF ORDINANCES.

7 IRRIGATION NOTES
SCALE: N/A

- TREE INSTALLATION NOTES:**
- ALL PLANTING AREAS AND PLANTING PITS SHALL BE TESTED FOR SUFFICIENT PERCOLATION (AT A RATE OF 1" OF STANDING WATER IN 10 MINUTES) PRIOR TO INSTALLATION OF PLANT MATERIAL TO ENSURE SUFFICIENT DRAINAGE.
 - PLANT BEDS IN PARKING LOTS AND IN AREAS COMPACTED BY EQUIPMENT AND MACHINERY SHALL BE LOOSENEED SO THAT THE SPECIFIED DRAINAGE/PERCOLATION RATE IS ACHIEVED.
 - ALL SYNTHETIC BURLAP, STRING, CORDS OR WIRE BASKETS SHALL BE REMOVED BEFORE TREES ARE PLANTED, WITHOUT BREAKING THE SOIL BALL. ALL SYNTHETIC TAPE SHALL BE REMOVED FROM BRANCHES AND TRUNKS PRIOR TO FINAL ACCEPTANCE. THE TOP 1/3 OF NATURAL BURLAP SHALL BE REMOVED, AFTER THE TREE IS SET IN THE PLANTING HOLE AND BEFORE THE TREES ARE BACKFILLED.
 - TOP OF TREE ROOTBALL SHALL BE 2" ABOVE FINISHED GRADE.

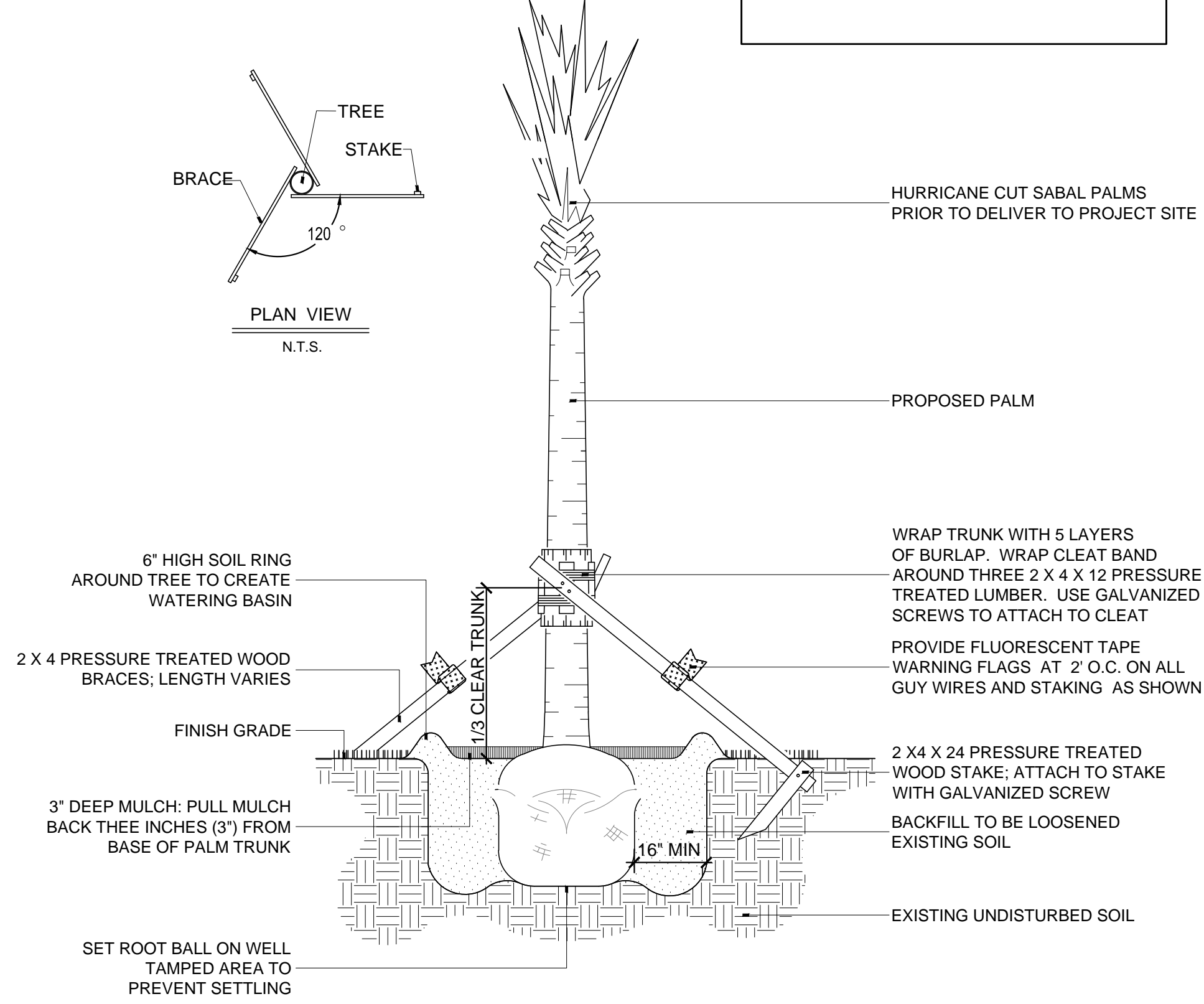


3 TREE PLANTING DETAIL
SCALE: N.T.S



4 SOD INSTALLATION DETAIL
SCALE: N.T.S

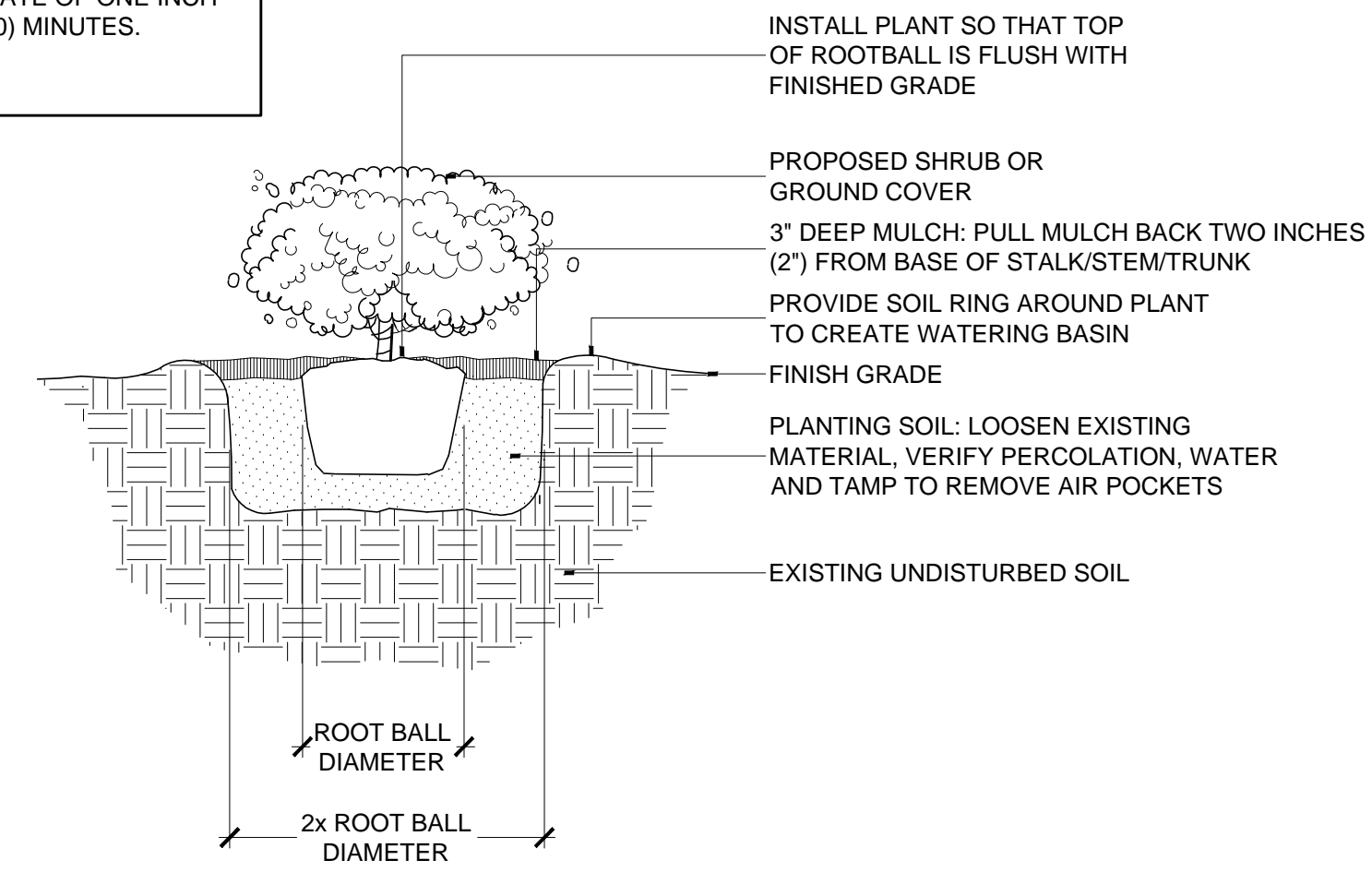
- PALM INSTALLATION NOTES:**
- CABBAGE PALMS TO HAVE HURRICANE CUT.
 - ALL PALMS ARE TO BE PLANTED WITH THE ROOT-BALL 1'-2" ABOVE FINISHED GRADE.
 - ALL PLANTING AREAS AND PLANTING PITS SHALL BE TESTED FOR SUFFICIENT PERCOLATION (AT A RATE OF 1" OF STANDING WATER IN 10 MINUTES) PRIOR TO INSTALLATION OF PLANT MATERIAL TO ENSURE SUFFICIENT DRAINAGE.
 - PLANT BEDS COMPACTED BY EQUIPMENT AND MACHINERY SHALL BE LOOSENEED SO THAT THE SPECIFIED DRAINAGE/PERCOLATION RATE IS ACHIEVED.
 - TOP OF ROOTBALL SHALL BE 2" ABOVE FINISH GRADE.



1 SABAL PALM PLANTING DETAIL
SCALE: N.T.S

DRAINAGE NOTE:

- PRIOR TO INSTALLATION OF PLANTS, CONTRACTOR TO VERIFY PLANTING PITS HAVE A PERCOLATION RATE OF ONE INCH (1") OF WATER IN TEN (10) MINUTES.



2 SHRUB AND GROUND COVER PLANTING DETAIL
SCALE: N.T.S