

# MICROWAVE WATER LEVEL INSTALLATION

8724580 KEY WEST STATION, KEY WEST, FLORIDA

## DRAWING INDEX

SHEET	DWG NO	TITLE
01	CS-01	COVER SHEET
02	G-01	PROJECT LOCATION
03	G-02	GENERAL ARRANGEMENT - 3D
04	G-03	GENERAL ARRANGEMENT - PLAN
05	G-04	GENERAL ARRANGEMENT - ELEVATION



National Ocean Service  
Center for Operational  
Oceanographic  
Products and Services

DESIGN BY	LG	05/10/15
DRAWN BY	LG	05/10/15
APPROVED BY	FERS	XX/XX/15
REVISION		

REVISION  
A

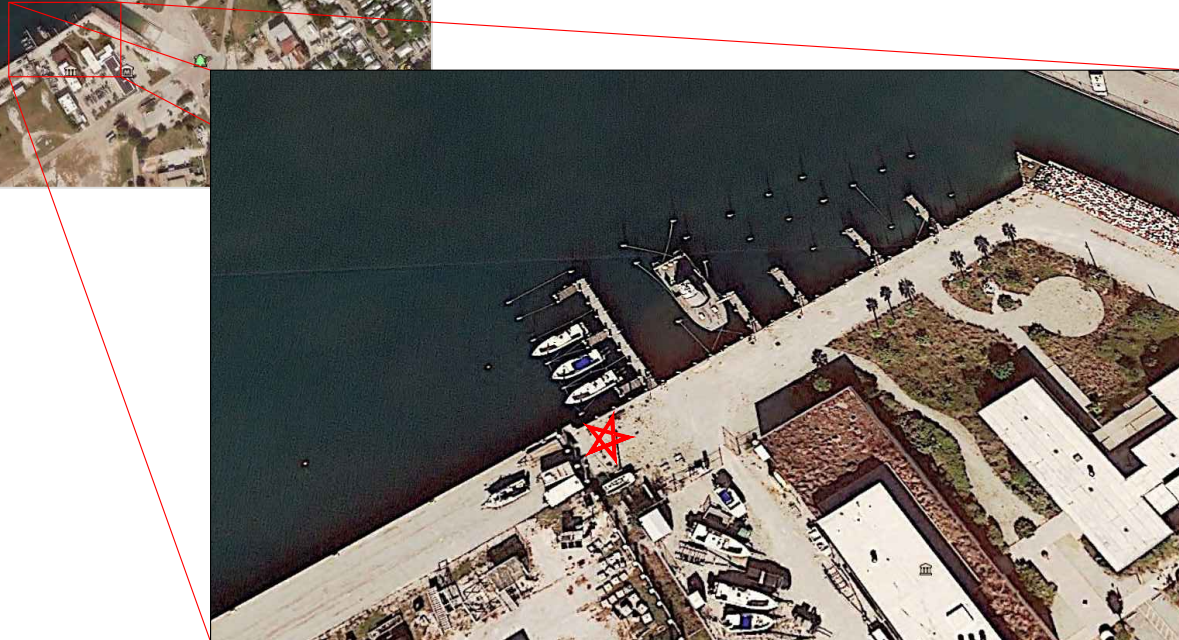
PERCENT COMPLETE  
100%

MICROWAVE WATER LEVEL INSTALLATION -  
87245580 KEY WEST STATION, KEY WEST, FLORIDA

COVER SHEET

**CS-01**

SHEET 01 OF 5



GENERAL NOTES:

1. STAR INDICATES PROPOSED LOCATION
2. NEW LOCATION IS 530 METERS FROM EXISTING STATION



National Ocean Service  
Center for Operational  
Oceanographic  
Products and Services

DESIGN BY	LG	05/10/15
DRAWN BY	LG	05/10/15
APPROVED BY	FERS	XX00015
REVISION		

REVISION
A

PERCENT COMPLETE
100%

MICROWAVE WATER LEVEL INSTALLATION -  
87245580 KEY WEST STATION, KEY WEST, FLORIDA

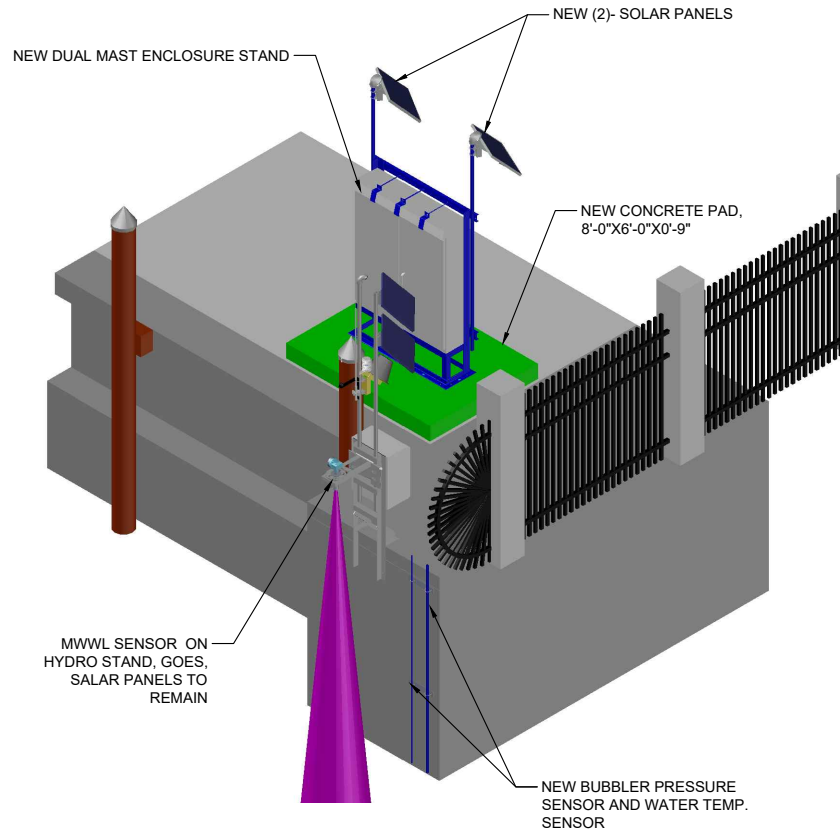
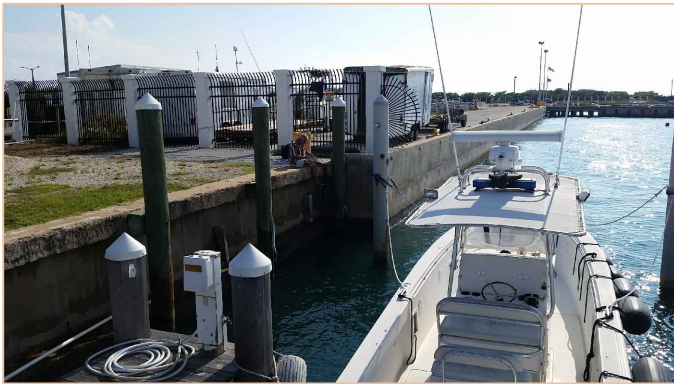
PROJECT LOCATION

G-01

SHEET 02 OF 5

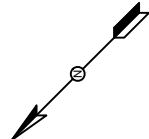
GENERAL NOTES:

1. THE PROJECT INCLUDES:
  - 1.a. INSTALLATION OF A BUBBLER PRESSURE SENSOR.
  - 1.b. INSTALLATION OF DUAL MAST ENCLOSURE STAND AND SUPPORTING CONCRETE PAD.
2. ALL DESIGN LOADS ARE IN ACCORDANCE WITH ASCE 7 WIND LOADS.
3. DUAL MAST ENCLOSURE, REFER TO FERS APPROVED COMPONENTS - DMES\_60X60X15.DWG, FRAME BASE - MOUNTING HOLE PATTERN 2.



MWWL SENSOR ON HYDRO STAND, GOES, SALAR PANELS TO REMAIN

NEW BUBBLER PRESSURE SENSOR AND WATER TEMP. SENSOR



DESIGN BY	LG	05/10/15
DRAWN BY	LG	05/10/15
APPROVED BY	FERS	XX00015
REVISION		

REVISION  
A

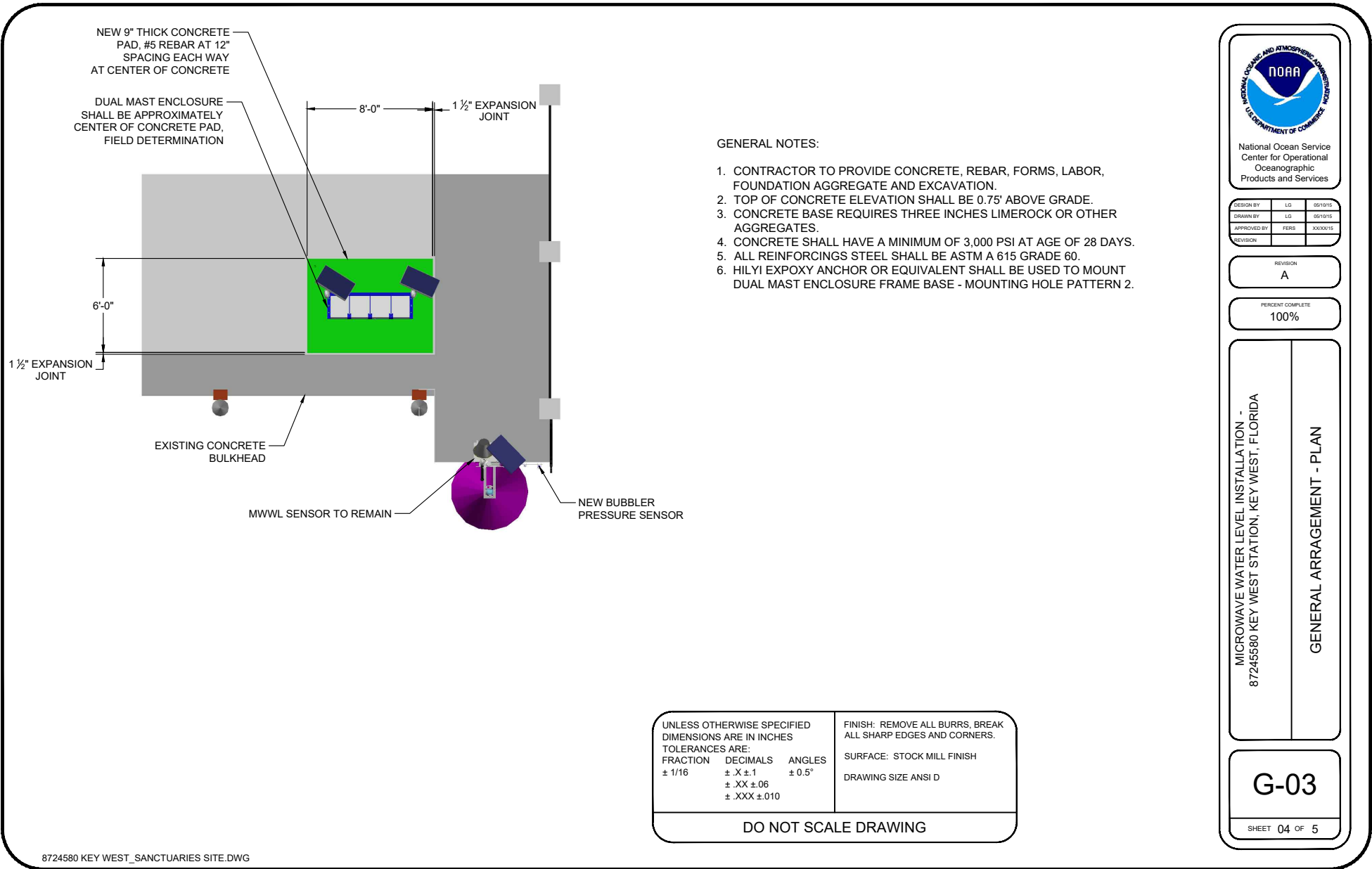
PERCENT COMPLETE  
100%

MICROWAVE WATER LEVEL INSTALLATION -  
87245580 KEY WEST STATION, KEY WEST, FLORIDA

GENERAL ARRANGEMENT -3D

G-02

SHEET 03 OF 5



NEW 9" THICK CONCRETE PAD, #5 REBAR AT 12" SPACING EACH WAY AT CENTER OF CONCRETE

DUAL MAST ENCLOSURE SHALL BE APPROXIMATELY CENTER OF CONCRETE PAD, FIELD DETERMINATION

8'-0" 1 1/2" EXPANSION JOINT

6'-0"

1 1/2" EXPANSION JOINT

EXISTING CONCRETE BULKHEAD

MWWL SENSOR TO REMAIN

NEW BUBBLER PRESSURE SENSOR

GENERAL NOTES:

1. CONTRACTOR TO PROVIDE CONCRETE, REBAR, FORMS, LABOR, FOUNDATION AGGREGATE AND EXCAVATION.
2. TOP OF CONCRETE ELEVATION SHALL BE 0.75' ABOVE GRADE.
3. CONCRETE BASE REQUIRES THREE INCHES LIMEROCK OR OTHER AGGREGATES.
4. CONCRETE SHALL HAVE A MINIMUM OF 3,000 PSI AT AGE OF 28 DAYS.
5. ALL REINFORCINGS STEEL SHALL BE ASTM A 615 GRADE 60.
6. HILYI EXPOXY ANCHOR OR EQUIVALENT SHALL BE USED TO MOUNT DUAL MAST ENCLOSURE FRAME BASE - MOUNTING HOLE PATTERN 2.



National Ocean Service  
Center for Operational  
Oceanographic  
Products and Services

DESIGN BY	LG	05/10/15
DRAWN BY	LG	05/10/15
APPROVED BY	FERB	XX/00/15
REVISION		

REVISION  
A

PERCENT COMPLETE  
100%

MICROWAVE WATER LEVEL INSTALLATION -  
87245580 KEY WEST STATION, KEY WEST, FLORIDA

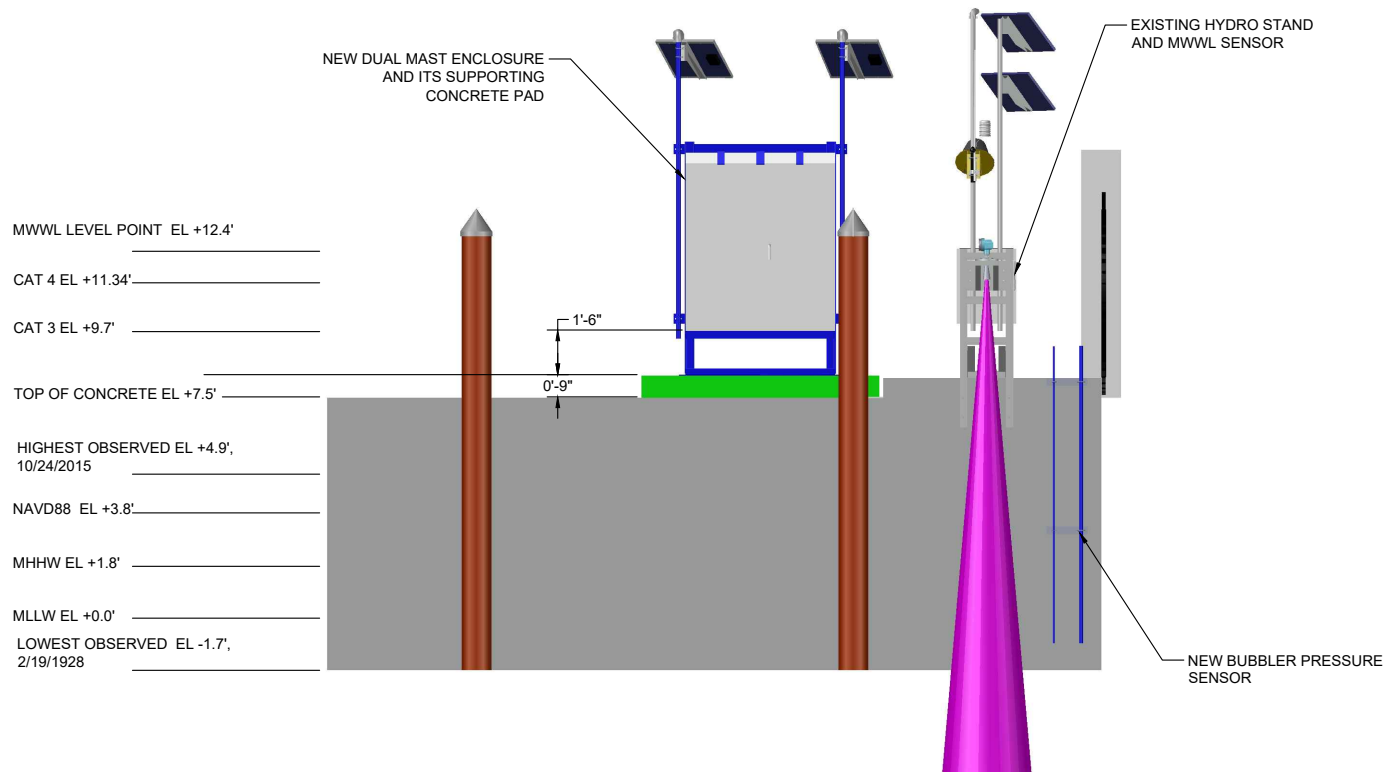
GENERAL ARRANGEMENT - PLAN

G-03

SHEET 04 OF 5

UNLESS OTHERWISE SPECIFIED DIMENSIONS ARE IN INCHES			FINISH: REMOVE ALL BURRS, BREAK ALL SHARP EDGES AND CORNERS.
TOLERANCES ARE:			SURFACE: STOCK MILL FINISH
FRACTION	DECIMALS	ANGLES	DRAWING SIZE ANSI D
± 1/16	± .X ± .1	± 0.5°	
	± .XX ± .06		
	± .XXX ± .010		

DO NOT SCALE DRAWING



National Ocean Service  
Center for Operational  
Oceanographic  
Products and Services

DESIGN BY	LG	05/10/15
DRAWN BY	LG	05/10/15
APPROVED BY	FERS	XX00015
REVISION		

REVISION  
A

PERCENT COMPLETE  
100%

MICROWAVE WATER LEVEL INSTALLATION -  
87245580 KEY WEST STATION, KEY WEST, FLORIDA

GENERAL ARRANGEMENT - ELEVATION

G-04

SHEET 05 OF 5