

**ADDITIONAL  
INFORMATION**











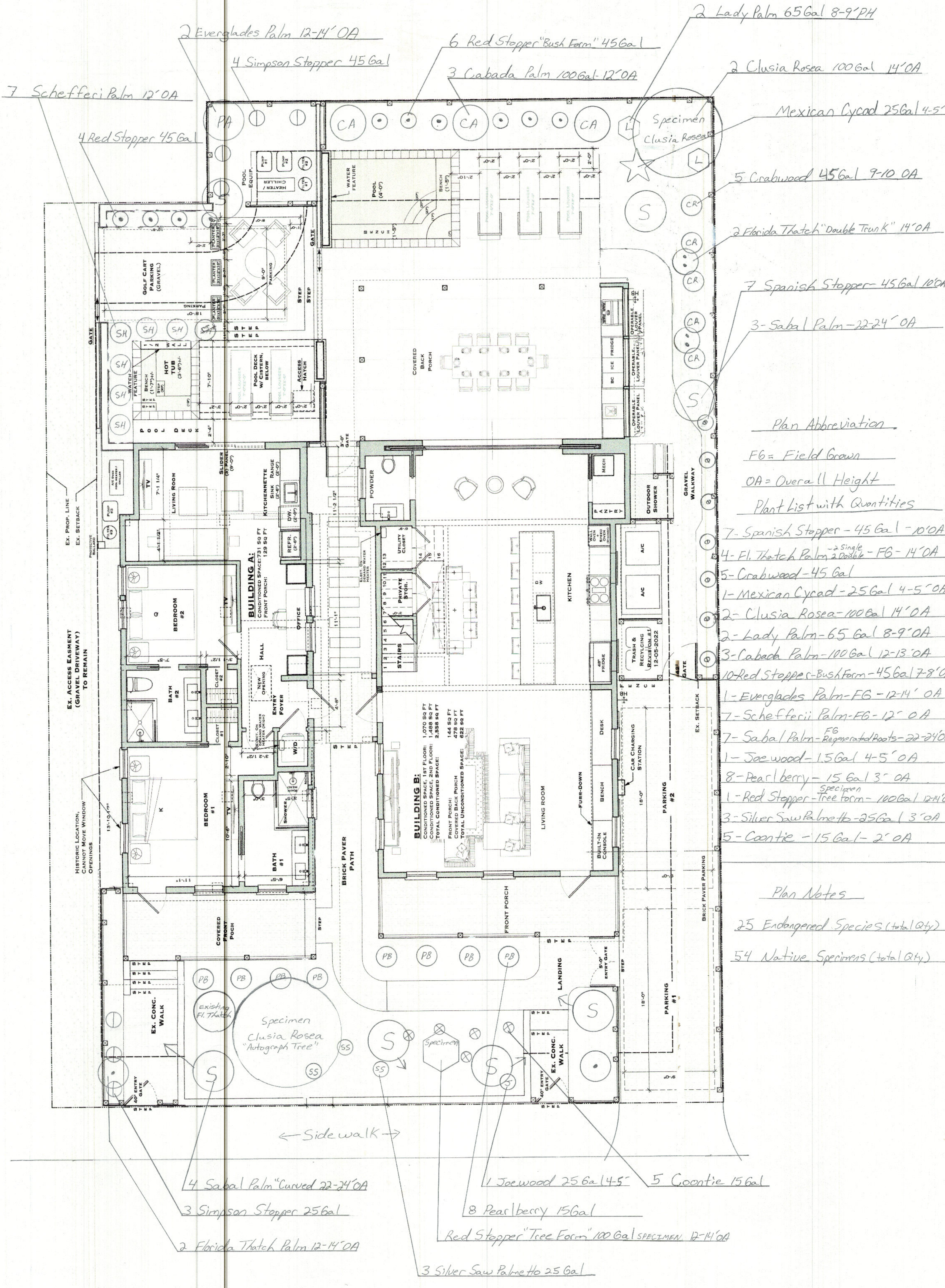








317 Whitehead St.



- Plan Abbreviation
- FG = Field Grown
  - OA = Overall Height
- Plant List with Quantities
- 7 - Spanish Stopper - 45 Gal - 10' OA
  - 4 - Fl. Thatch Palm - 2 Double - FG - 14' OA
  - 5 - Crabwood - 45 Gal
  - 1 - Mexican Cycad - 25 Gal 4-5' OA
  - 2 - Clusia Rosea - 100 Gal 14' OA
  - 2 - Lady Palm - 65 Gal 8-9' OA
  - 3 - Cabada Palm - 100 Gal 12-13' OA
  - 10 - Red Stopper - Bush Form - 45 Gal 7-8' OA
  - 1 - Everglades Palm - FG - 12-14' OA
  - 7 - Schefferi Palm - FG - 12' OA
  - 7 - Sabal Palm - Regenerated Roots - 22-24' OA
  - 1 - Joe Wood - 15 Gal 4-5' OA
  - 8 - Pearlberry - 15 Gal 3' OA
  - 1 - Red Stopper - Tree Form - 100 Gal 12-14' OA
  - 3 - Silver Saw Palmetto - 25 Gal 3' OA
  - 5 - Coontie - 15 Gal - 2' OA

Plan Notes

- 25 Endangered Species (total Qty)
- 54 Native Specimens (total Qty)

- 4 Sabal Palm "Curved 22-24' OA
- 3 Simpson Stopper 25 Gal
- 2 Florida Thatch Palm 12-14' OA
- 1 Joe Wood 25 Gal 4-5'
- 8 Pearlberry 15 Gal
- Red Stopper "Tree Form" 100 Gal SPECIMEN 12-14' OA
- 3 Silver Saw Palmetto 25 Gal
- 5 Coontie 15 Gal